

District I  
1625 N. French Dr., Hobbs, NM 88240  
Phone: (575) 393-6161 Fax: (575) 393-0720  
District II  
811 S. First St., Artesia, NM 88210  
Phone: (575) 748-1283 Fax: (575) 748-9720  
District III  
1000 Rio Brazos Road, Aztec, NM 87410  
Phone: (505) 334-6178 Fax: (505) 334-6170  
District IV  
1220 S. St. Francis Dr., Santa Fe, NM 87505  
Phone: (505) 476-3460 Fax: (505) 476-3462

State of New Mexico  
Energy, Minerals & Natural Resources Department  
OIL CONSERVATION DIVISION  
1220 South St. Francis Dr.  
Santa Fe, NM 87505

Form C-102

Revised August 1, 2011

Submit one copy to appropriate  
District Office

JUL 5 2016

☐ AMENDED REPORT

WELL LOCATION AND ACREAGE DEDICATION PLAT

<sup>1</sup> API Number 30-025 49347	<sup>2</sup> Pool Code 27220	<sup>3</sup> Pool Name Gem; Bone Spring
<sup>4</sup> Property Code 316227	<sup>5</sup> Property Name RUSTY ANCHOR 7 FEDERAL COM	<sup>6</sup> Well Number 3H
<sup>7</sup> OGRID No. 160825	<sup>8</sup> Operator Name B.C. OPERATING, INC.	<sup>9</sup> Elevation 3528

<sup>10</sup> Surface Location

UL or lot no.	Section	Township	Range	Lot Idn	Feet from the	North/South line	Feet from the	East/West line	County
B	18	T20S	R33E		534'	NORTH	2437'	EAST	LEA

<sup>11</sup> Bottom Hole Location If Different From Surface

UL or lot no.	Section	Township	Range	Lot Idn	Feet from the	North/South line	Feet from the	East/West line	County
2	6	T20S	R33E		240'	NORTH	2260'	EAST	LEA

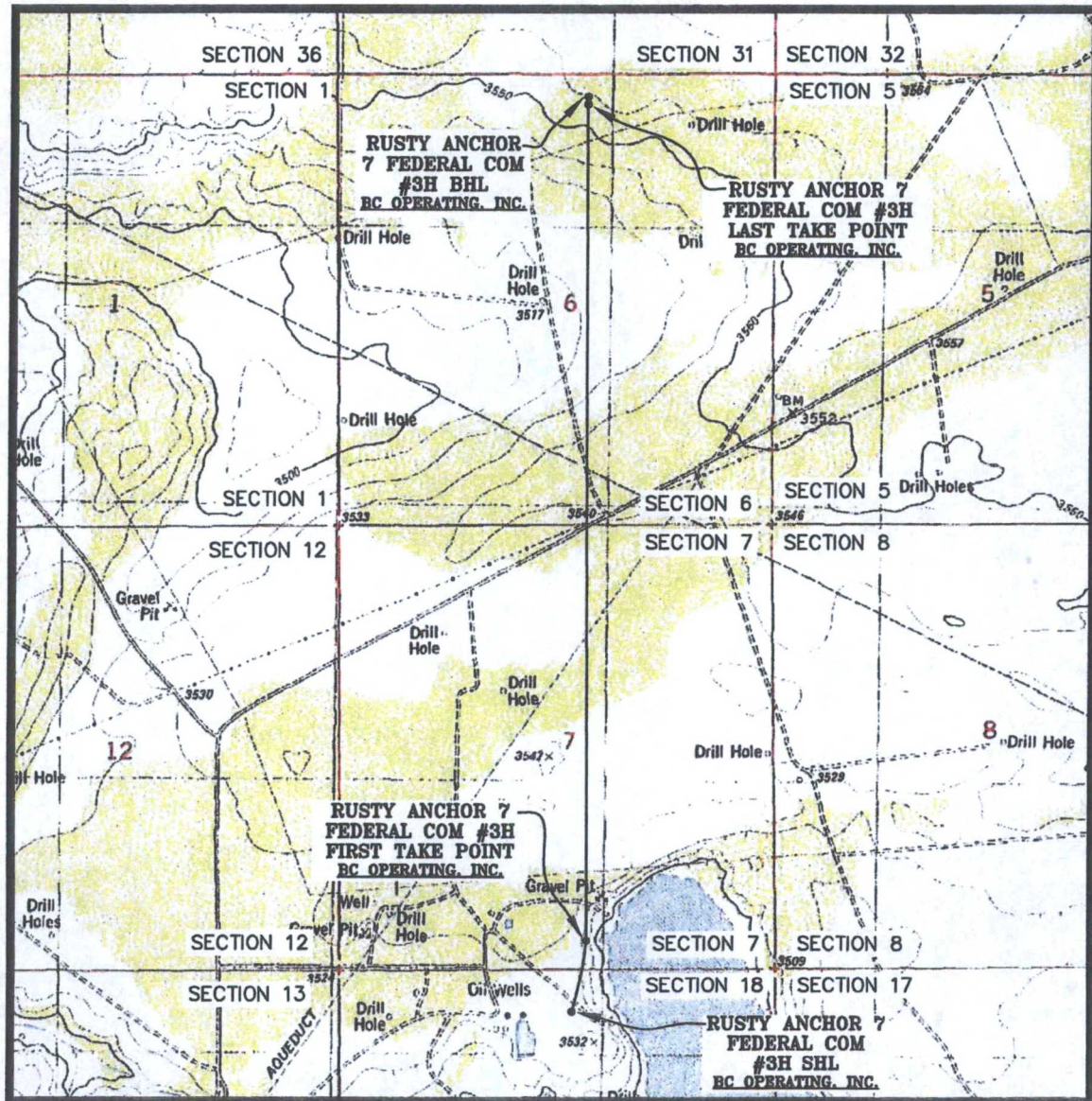
<sup>12</sup> Dedicated Acres 320.62	<sup>13</sup> Joint or Infill	<sup>14</sup> Consolidation Code	<sup>15</sup> Order No.
---	-------------------------------	----------------------------------	-------------------------

No allowable will be assigned to this completion until all interests have been consolidated or a non-standard unit has been approved by the division.

<p><sup>16</sup> SECTION 36</p> <p>SECTION 1</p> <p>BOTTOM HOLE LOCATION 240' FNL 2260' FEL NAD 83, SPCS NM EAST X: 735961.30' / Y: 585802.85' LAT: 32.60883335N / LON: 103.70128365W NAD 27, SPCS NM EAST X: 694781.16' / Y: 585740.23' LAT: 32.60871158N / LON: 103.70078718W</p> <p>LAST TAKE POINT 330' FNL 2280' FEL NAD 83, SPCS NM EAST X: 735961.80' / Y: 575712.85' LAT: 32.60858598N / LON: 103.70128442W NAD 27, SPCS NM EAST X: 694781.46' / Y: 585850.23' LAT: 32.60846421N / LON: 103.70078796W</p> <p>SECTION 12</p> <p>FIRST TAKE POINT 330' FSL 2280' FEL NAD 83, SPCS NM EAST X: 735994.44' / Y: 575792.91' LAT: 32.58131971N / LON: 103.70136921W NAD 27, SPCS NM EAST X: 694614.02' / Y: 575730.56' LAT: 32.58119781N / LON: 103.70087379W</p> <p>SURFACE HOLE LOCATION 534' FNL 2437' FEL NAD 83, SPCS NM EAST X: 735823.12' / Y: 574929.04' LAT: 32.57894809N / LON: 103.70194201W NAD 27, SPCS NM EAST X: 694542.88' / Y: 574888.71' LAT: 32.57882619N / LON: 103.70144686W</p>	<p>SECTION 31</p> <p>SECTION 6</p> <p>LAST TAKE POINT</p> <p>SECTION 7</p> <p>FIRST TAKE POINT</p> <p>SECTION 18</p>	<p>SECTION 32</p> <p>SECTION 5</p> <p>SECTION 8</p> <p>SECTION 17</p>	<p><sup>17</sup> OPERATOR CERTIFICATION</p> <p>I hereby certify that the information contained herein is true and complete to the best of my knowledge and belief, and that this organization either owns a working interest or unleased mineral interest in the land including the proposed bottom hole location or has a right to drill this well at this location pursuant to a contract with an owner of such a mineral or working interest, or to a voluntary pooling agreement or a compulsory pooling order heretofore entered by the division.</p> <p><u>Pam Stevens</u> 08/15/15 Signature Date</p> <p>Pam Stevens Printed Name</p> <p>pstevens@bcoperating.com E-mail Address</p> <p><sup>18</sup> SURVEYOR CERTIFICATION</p> <p>I hereby certify that the well location shown on this plat was plotted from field notes of actual surveys made by me or under my supervision, and that the same is true and correct to the best of my belief.</p> <p>AUGUST 05, 2015 Date of Survey</p> <p><u>Lloyd P. Short</u> Signature and Seal of Professional Surveyor</p> <p>21653 Certificate Number</p> <p>LLOYD P. SHORT NEW MEXICO 21653 PROFESSIONAL SURVEYOR</p>
--	--	---	--



# LOCATION VERIFICATION MAP



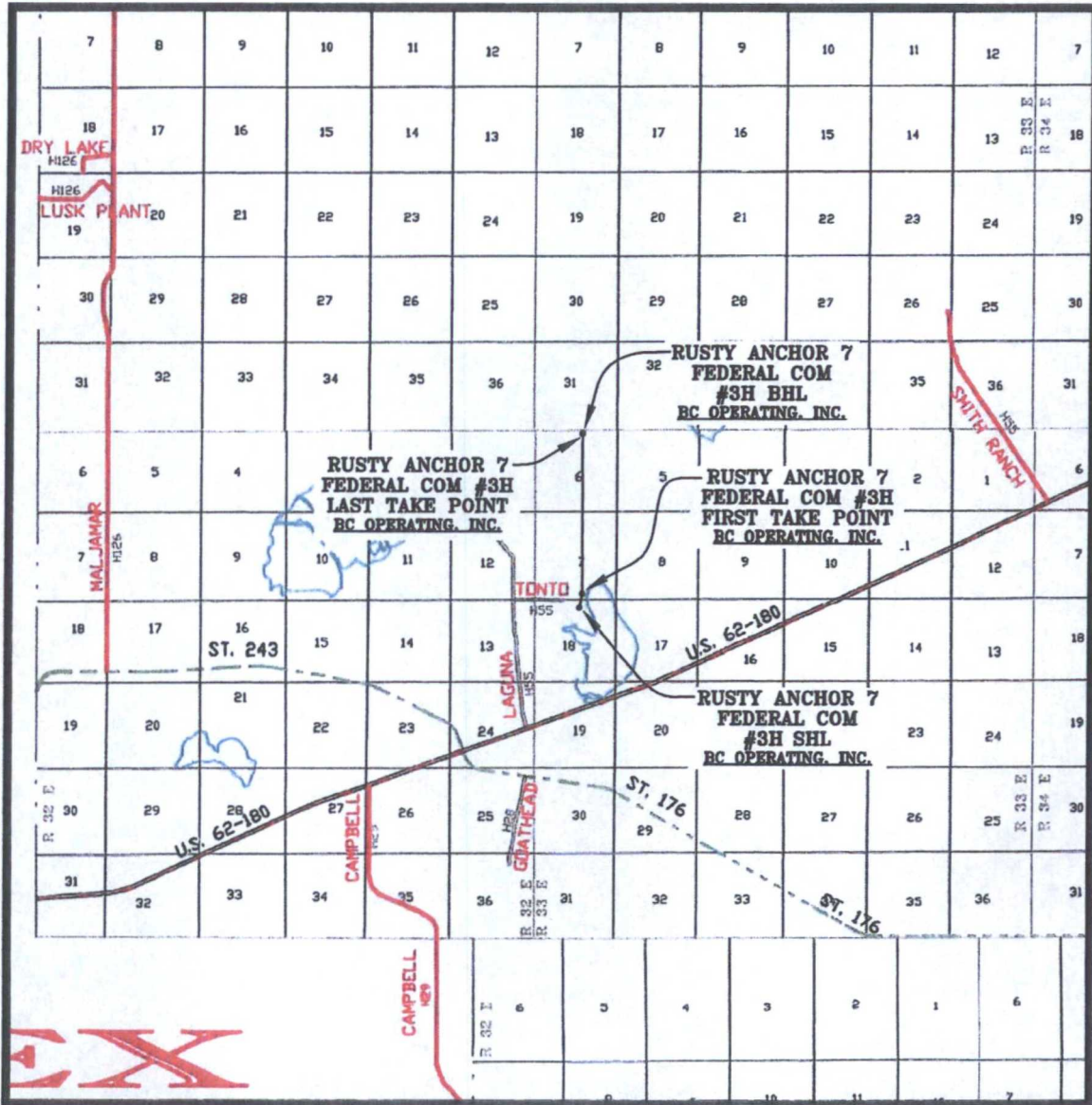
SEC. 18 TWP. 20-S RGE. 33-E  
 SURVEY: N.M.P.M.  
 COUNTY: LEA  
 DESCRIPTION: 534' FNL & 2437' FEL  
 ELEVATION: 3528'  
 OPERATOR: B.C. OPERATING, INC.  
 LEASE: RUSTY ANCHOR  
 U.S.G.S. TOPOGRAPHIC MAP: LAGUNA GATUNA, N.M.

SCALE: 1" = 2000'  
 CONTOUR INTERVAL = 10'

PREPARED BY:  
 R-SQUARED GLOBAL, LLC  
 1309 LOUISVILLE AVENUE, MONROE, LA 71201  
 318-323-6900 OFFICE  
 JOB No. R3408



## VICINITY MAP



SEC. 18 TWP. 20-S RGE. 33-E  
SURVEY: N.M.P.M.  
COUNTY: LEA  
DESCRIPTION: 534' FNL & 2437' FEL  
ELEVATION: 3528'  
OPERATOR: B.C. OPERATING, INC.  
LEASE: RUSTY ANCHOR  
U.S.G.S. TOPOGRAPHIC MAP: LAGUNA GATUNA, N.M.

SCALE: 1" = 2 MILES

PREPARED BY:  
R-SQUARED GLOBAL, LLC  
1309 LOUISVILLE AVENUE, MONROE, LA 71201  
318-323-8900 OFFICE  
JOB No. R3406

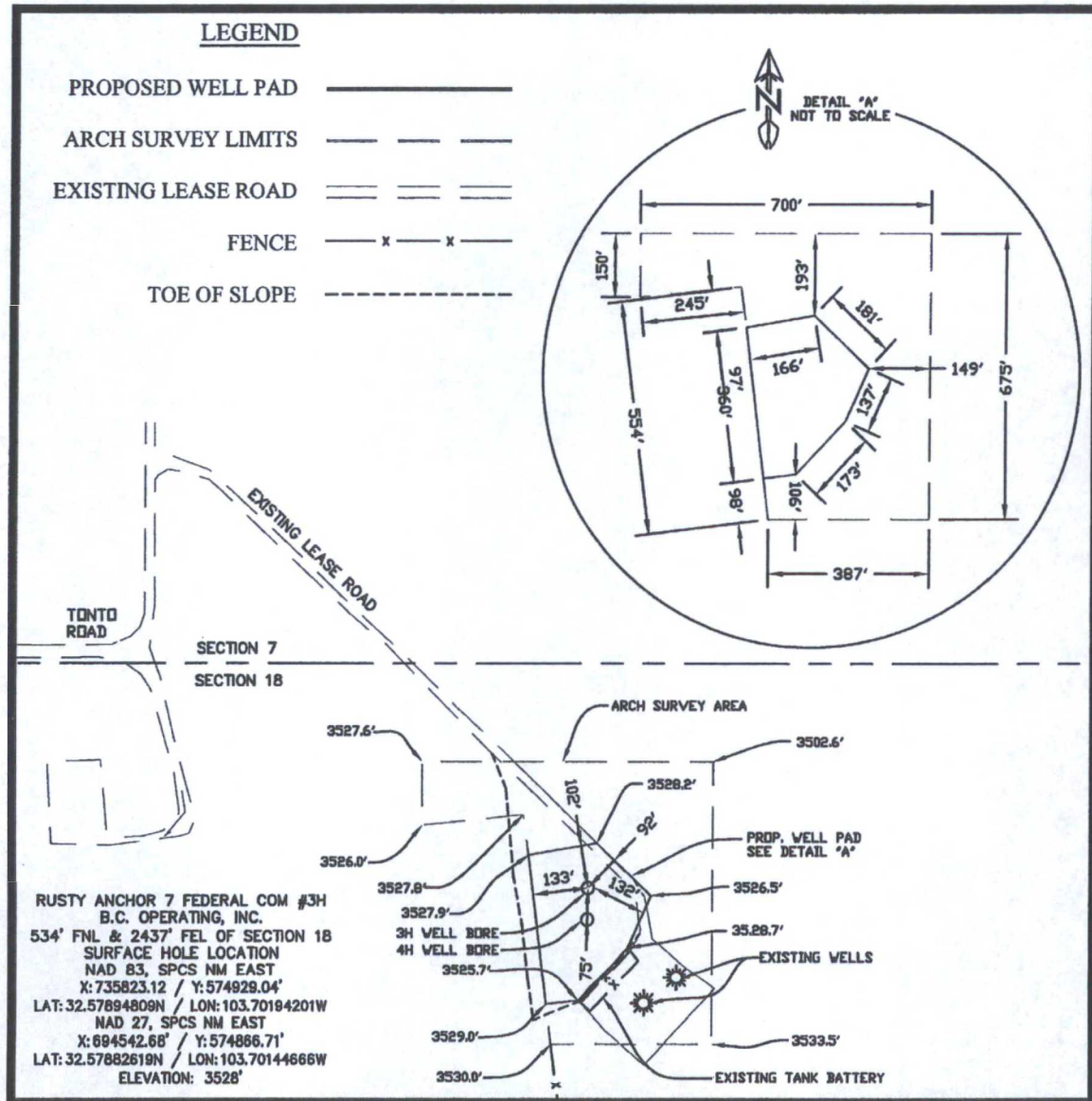
# WELL PAD TOPO

SEC. 18 TWP. 20-S RGE. 33-E

SURVEY: N.M.P.M.

COUNTY: LEA

U.S.G.S. TOPOGRAPHIC MAP: LAGUNA GATUNA, N.M.



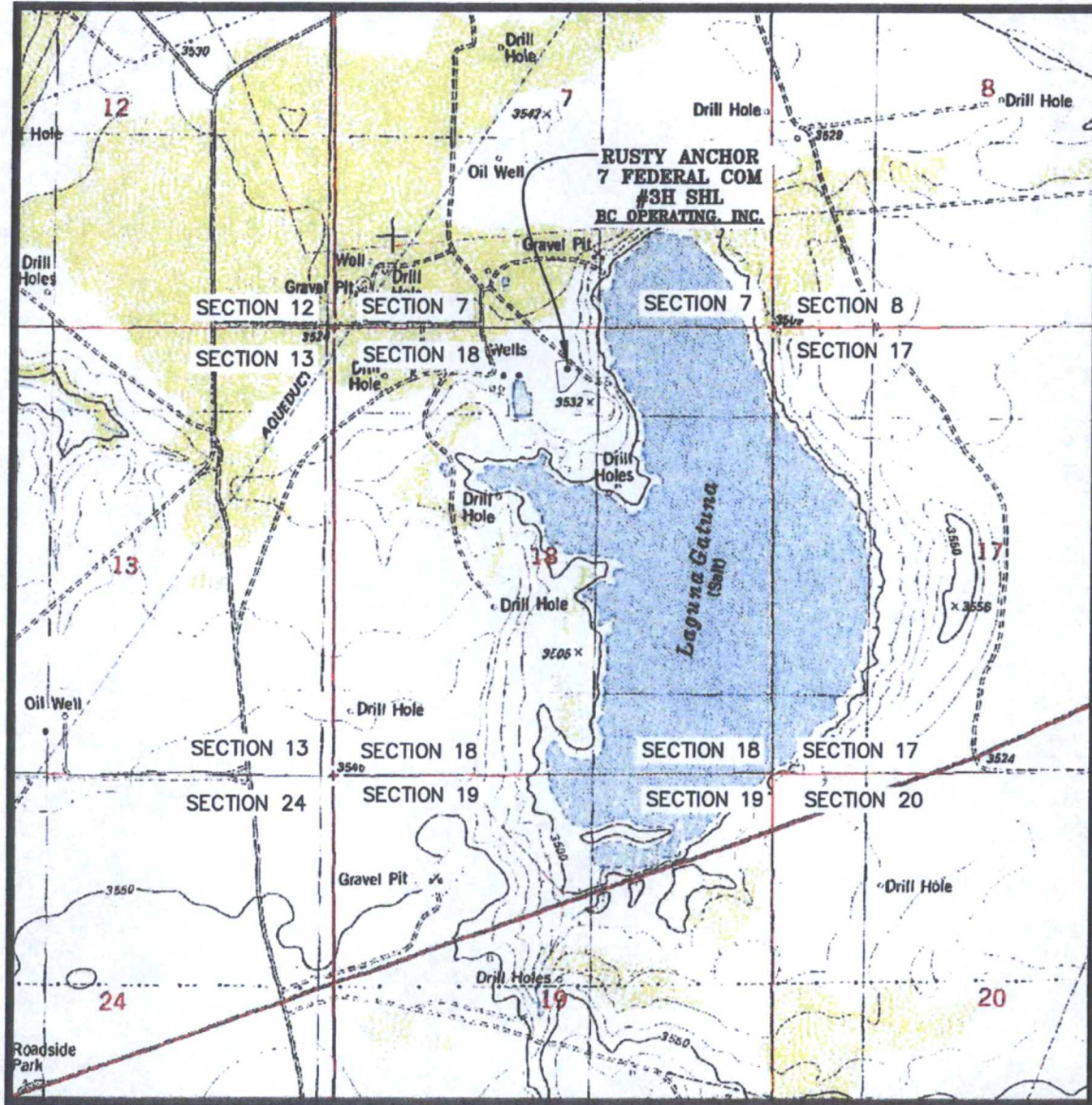
200' 0' 200' 400'

SCALE: 1" = 400'

PREPARED BY:  
R-SQUARED GLOBAL, LLC  
1309 LOUISVILLE AVENUE, MONROE, LA 71201  
318-323-6900 OFFICE  
JOB No. R3408



# WELL PAD LOCATION VERIFICATION MAP



SEC. 18 TWP. 20-S RGE. 33-E

SURVEY: N.M.P.M.

COUNTY: LEA

DESCRIPTION: 534' FNL & 2437' FEL

ELEVATION: 3528'

OPERATOR: B.C. OPERATING, INC.

LEASE: RUSTY ANCHOR

U.S.G.S. TOPOGRAPHIC MAP: LAGUNA GATUNA, N.M.

SCALE: 1" = 2000'  
CONTOUR INTERVAL = 5'

PREPARED BY:  
R-SQUARED GLOBAL, LLC  
1309 LOUISVILLE AVENUE, MONROE, LA 71201  
318-323-6900 OFFICE  
JOB No. R3408

# EXISTING ACCESS ROAD VICINITY MAP

RUSTY ANCHOR 7 FEDERAL COM #3H

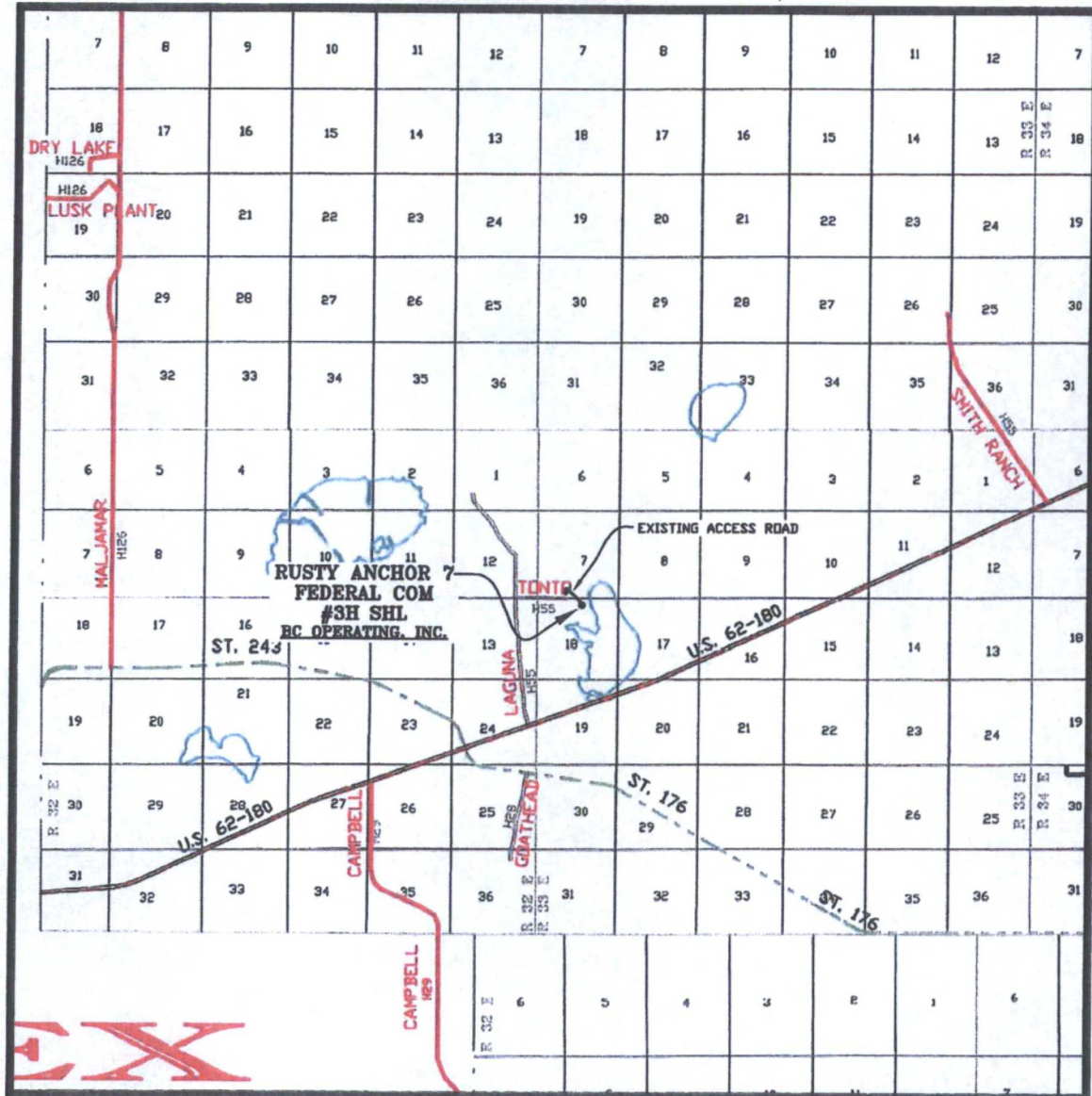
534' FNL & 2437' FEL

SEC. 18 TWP. 20-S RGE. 33-E

SURVEY: N.M.P.M.

COUNTY: LEA

U.S.G.S. TOPOGRAPHIC MAP: LAGUNA GATUNA, N.M.



SCALE: 1" = 2 MILES

PREPARED BY:  
R-SQUARED GLOBAL, LLC  
1309 LOUISVILLE AVENUE, MONROE, LA 71201  
318-323-6900 OFFICE  
JOB No. R3408



# MINERAL MAP

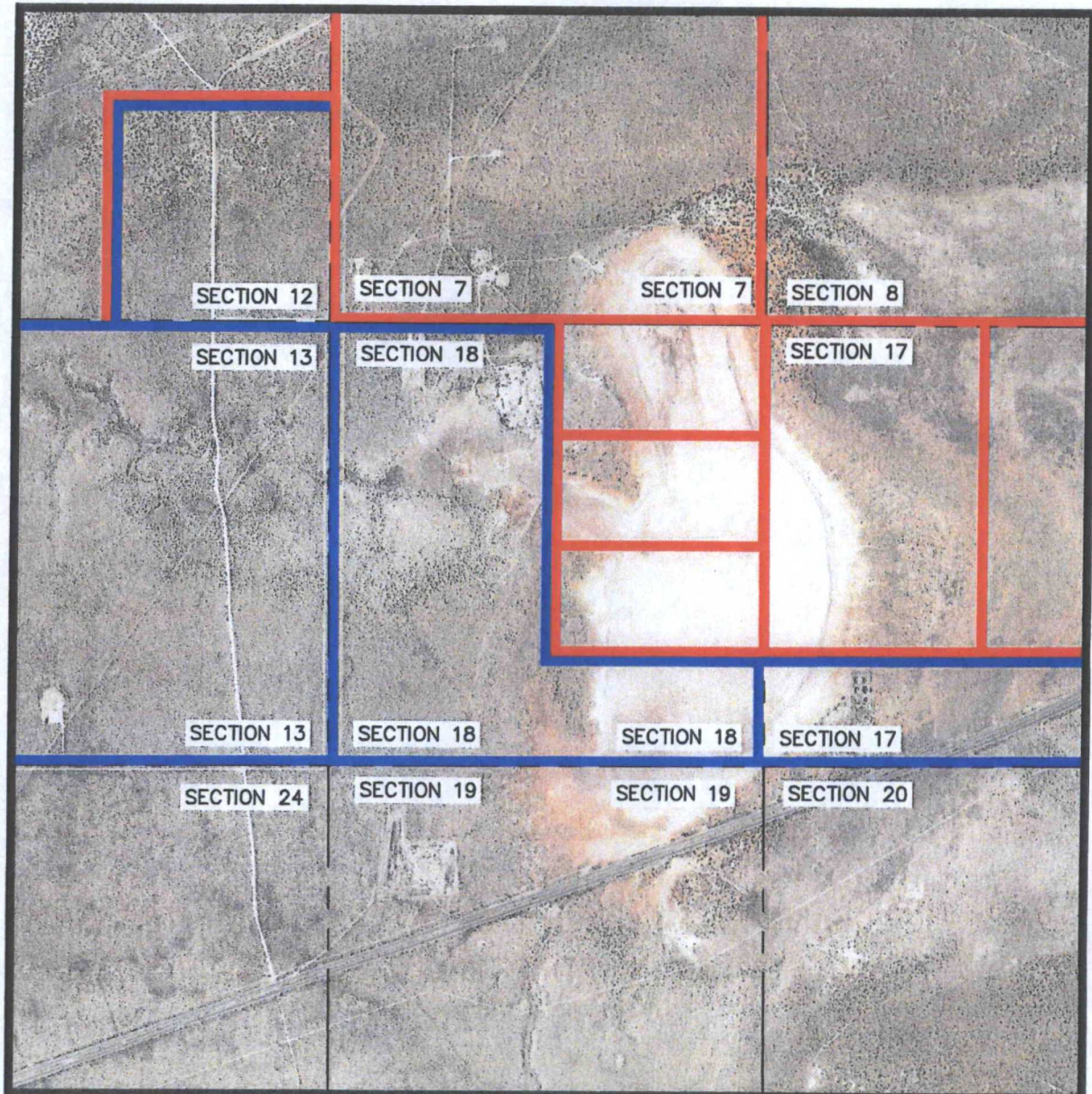
RUSTY ANCHOR 7 FEDERAL COM

SEC. 18 TWP. 20-S RGE. 33-E

SURVEY: N.M.P.M.

COUNTY: LEA

U.S.G.S. TOPOGRAPHIC MAP: LAGUNA GATUNA, N.M.



## LEGEND

SCALE: 1" = 1000'

STATE MINERALS



FEDERAL COM MINERAL



PREPARED BY:  
R-SQUARED GLOBAL, LLC  
1309 LOUISVILLE AVENUE, MONROE, LA 71201  
318-323-8900 OFFICE  
JOB No. R3406