

District I
1625 N. French Dr., Hobbs, NM 88240
Phone: (575) 393-6161 Fax: (575) 393-0720
District II
811 S. First St., Artesia, NM 88210
Phone: (575) 748-1283 Fax: (575) 748-9720
District III
1000 Rio Brazos Road, Aztec, NM 87410
Phone: (505) 334-6178 Fax: (505) 334-6170
District IV
1220 S. St. Francis Dr., Santa Fe, NM 87505
Phone: (505) 476-3460 Fax: (505) 476-3462

State of New Mexico
Energy, Minerals & Natural Resources Department
OIL CONSERVATION DIVISION
1220 South St. Francis Dr.
Santa Fe, NM 87505

Form C-102
Revised August 1, 2011
Submit one copy to appropriate
District Office

☐ AMENDED REPORT

WELL LOCATION AND ACREAGE DEDICATION PLAT

¹ API Number 30-025-43355		² Pool Code 27220		³ Pool Name GEM BONE SPRING	
⁴ Property Code 316492		⁵ Property Name TONTTO 31 B2B0 FEDERAL			
⁷ OGRID NO. 14744		⁸ Operator Name MEWBOURNE OIL COMPANY			
				⁶ Well Number 1H	
				⁹ Elevation 3579'	
¹⁰ Surface Location					
UL or lot no. B	Section 31	Township 19S	Range 33E	Lot Idn 185	Feet from the NORTH
					Feet From the 1910
					East/West line EAST
					County LEA
¹¹ Bottom Hole Location If Different From Surface					
UL or lot no. O	Section 31	Township 19S	Range 33E	Lot Idn 330	Feet from the SOUTH
					Feet from the 1980
					East/West line EAST
					County LEA
¹² Dedicated Acres 160		¹³ Joint or Infill		¹⁴ Consolidation Code	
				¹⁵ Order No.	

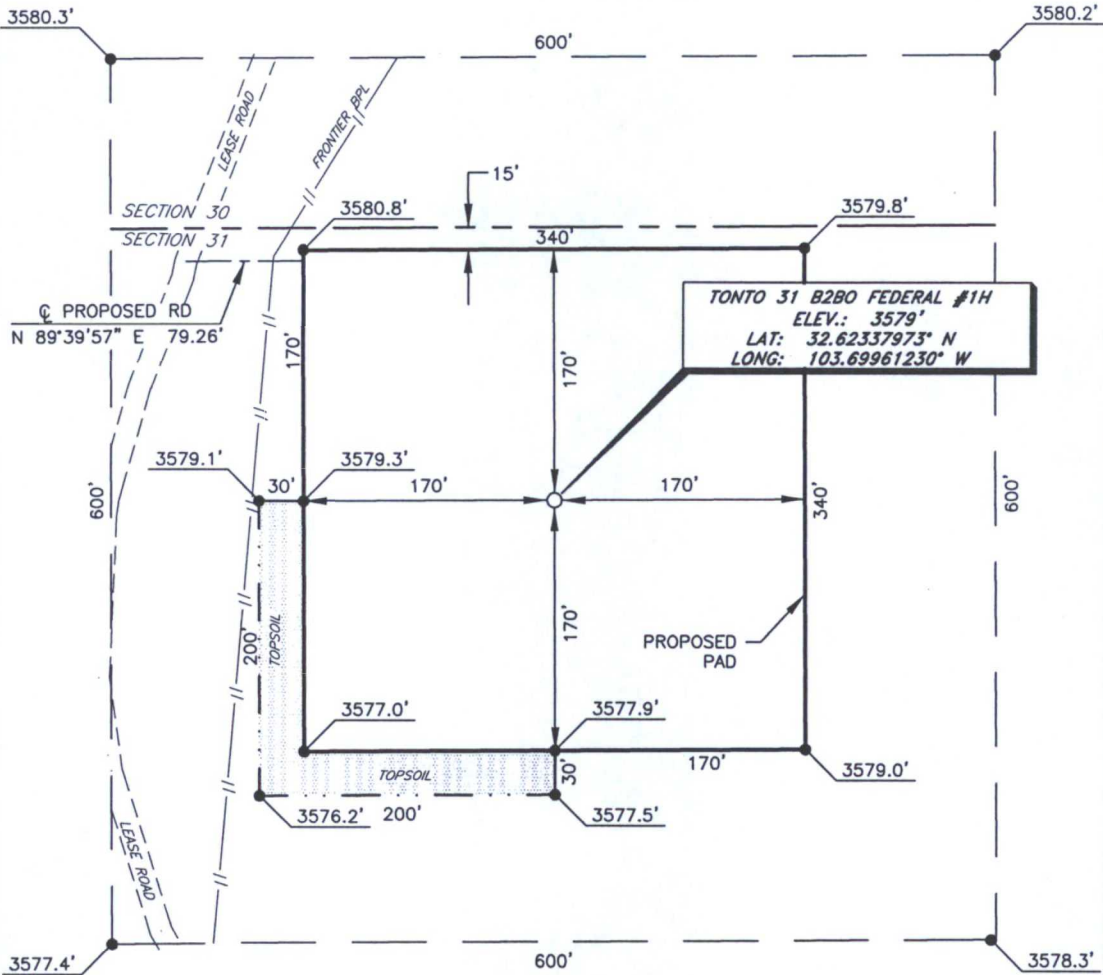
No allowable will be assigned to this completion until all interest have been consolidated or a non-standard unit has been approved by the division.

¹⁶ GEODETIC DATA NAD 27 GRID - NM EAST Lot 1 SURFACE LOCATION N 591078.7 - E 695111.1 LAT: 32.62337973° N LONG: 103.69961230° W BOTTOM HOLE N 586312.0 - E 695067.0 CORNER DATA Lot 2 NAD 27 GRID - NM EAST A: FOUND BRASS CAP "1943" N 585962.9 - E 691752.2 B: FOUND BRASS CAP "1912" N 588604.7 - E 691734.0 C: FOUND BRASS CAP "1912" N 591242.6 - E 691720.7 D: FOUND BRASS CAP "1912" N 591259.3 - E 694377.5 Lot 3 E: FOUND BRASS CAP "1912" N 591275.0 - E 697019.7 F: CALCULATED CORNER N 585992.5 - E 697048.8 G: FOUND BRASS CAP "1912" N 585978.5 - E 694402.3 Lot 4				¹⁷ OPERATOR CERTIFICATION I hereby certify that the information contained herein is true and complete to the best of my knowledge and belief, and that this organization either owns a working interest or unleased mineral interest in the land including the proposed bottom hole location or has a right to drill this well at this location pursuant to a contract with an owner of such a mineral or working interest, or to a voluntary pooling agreement or a compulsory pooling order heretofore entered by the division. Signature: <u>BRADLEY BISHOP</u> Date: <u>2-5-15</u> Printed Name: <u>BRADLEY BISHOP</u> E-mail Address: _____	
		¹⁸ SURVEYOR CERTIFICATION I hereby certify that the well location shown on this plat was plotted from field notes of actual surveys made by me or under my supervision, and that the same is true and correct to the best of my belief. Date of Survey: <u>11-11-14</u> Signature and Seal of Professional Surveyor: <u>ROBERT M. HOWETT</u> Certificate Number: <u>19680</u>			

RRC - Firm No.: TX 10193838 NM 4655451 - Job No.: LS140471

EXHIBIT "3"

MEWBOURNE OIL COMPANY
 TONTO 31 B2B0 FEDERAL #1H
 (185' FNL & 1910' FEL)
 SECTION 31, T19S, R33E
 N. M. P. M., LEA CO., NEW MEXICO



DIRECTIONS TO LOCATION

From the intersection of CR-126A (Maljamar) and CR-126 (Dry Lake);
 Go East on lease road approx. 5.0 miles to a lease road on right;
 Turn right and go South turning Southeast approx. 2.1 miles to a "T";
 Turn right and go Southwest approx. 0.9 miles to a "Y";
 Take left fork and go South approx. 0.1 miles to proposed road on left;
 Turn left and go East approx. 250 feet to location on the right.

SCALE: 1" = 100'
 50 100

BEARINGS ARE
 NAD 27 GRID - NM EAST
 DISTANCES ARE
 GROUND.

Firm No.: TX 10193838 NM 4655451

Copyright 2014 - All Rights Reserved

NO.	REVISION	DATE
JOB NO.:	LS140471	
DWG. NO.:	140471PAD	

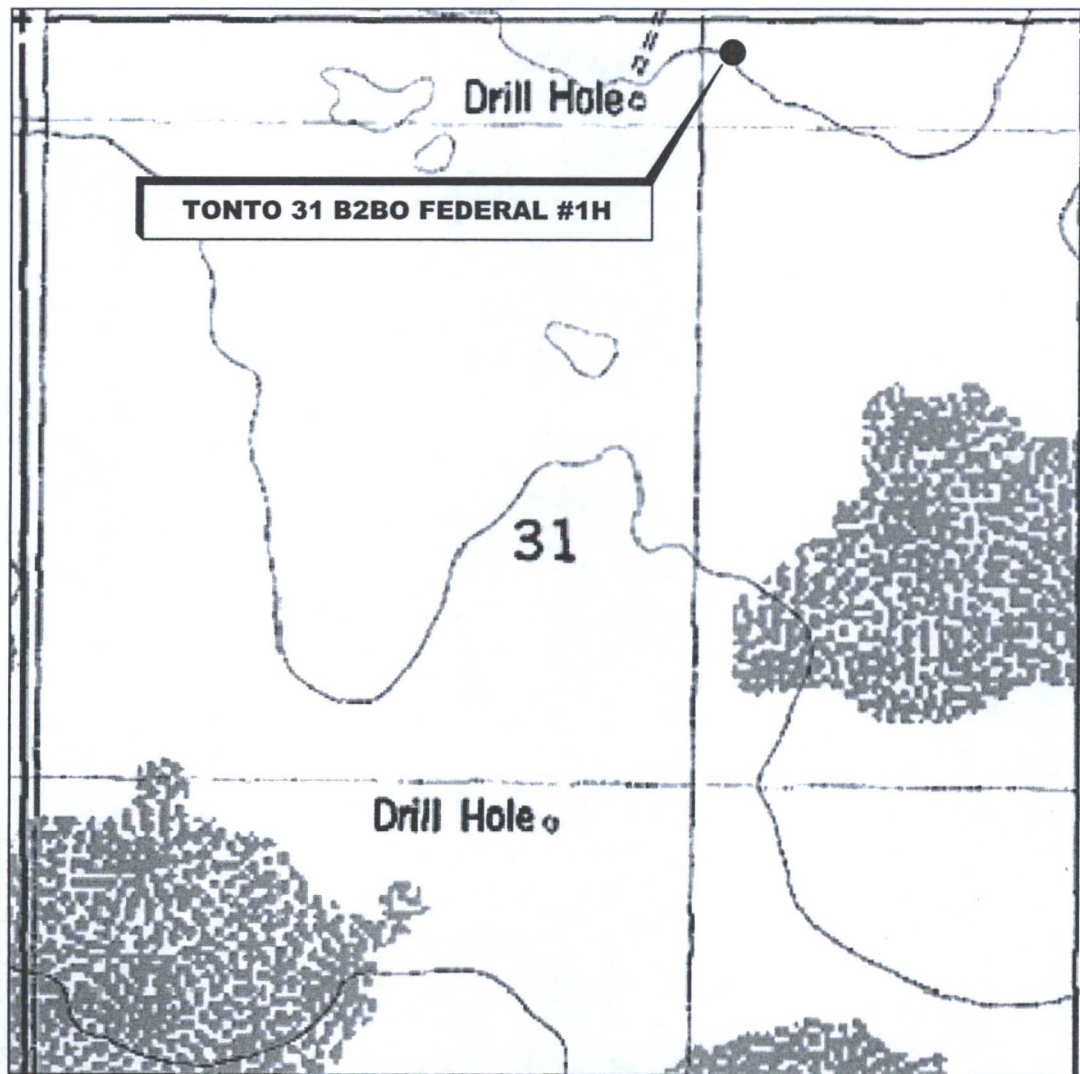
RRC

308 W. BROADWAY ST., HOBBS, NM 88240 (575) 964-8200

SCALE: 1" = 100'
DATE: 11-11-14
SURVEYED BY: BK/KR
DRAWN BY: JC
APPROVED BY: RMH
SHEET : 1 OF 1

EXHIBIT "3A"

LOCATION VERIFICATION MAP



*SECTION 31, TWP. 19 SOUTH, RGE. 33 EAST,
N. M. P. M., LEA COUNTY, NEW MEXICO*

OPERATOR: Mewbourne Oil Company
LEASE: Tonto 31 B2BO Federal
WELL NO.: 1H
ELEVATION: 3579'

LOCATION: 185' FNL & 1910' FEL
CONTOUR INTERVAL: 10'
USGS TOPO. SOURCE MAP:
Laguna Gatuna, NM (1984)

Firm No.: TX 10193838 NM 4655451

Copyright 2014 - All Rights Reserved

NO.	REVISION	DATE
JOB NO.:	LS140471	
DWG. NO.:	140471LVM	

RRC

308 W. BROADWAY ST., HOBBS, NM 88240 (575) 964-8200

SCALE: N.T.S.
DATE: 11-11-14
SURVEYED BY: BK/KR
DRAWN BY: JC
APPROVED BY: RMH
SHEET : 1 OF 1

VICINITY MAP

NOT TO SCALE



*SECTION 31, TWP. 19 SOUTH, RGE. 33 EAST,
N. M. P. M., LEA COUNTY, NEW MEXICO*

OPERATOR: Mewbourne Oil Company
 LEASE: Tonto 31 B2BO Federal
 WELL NO.: 1H

LOCATION: 185' FNL & 1910' FEL
 ELEVATION: 3579'

Firm No.: TX 10193838 NM 4655451

Copyright 2014 - All Rights Reserved

NO.	REVISION	DATE
JOB NO.: LS140471		
DWG. NO.: 140471VM		

RRC

308 W. BROADWAY ST., HOBBS, NM 88240 (575) 964-8200

SCALE: N.T.S.
DATE: 11-11-14
SURVEYED BY: BK/KR
DRAWN BY: JC
APPROVED BY: RMH
SHEET : 1 OF 1

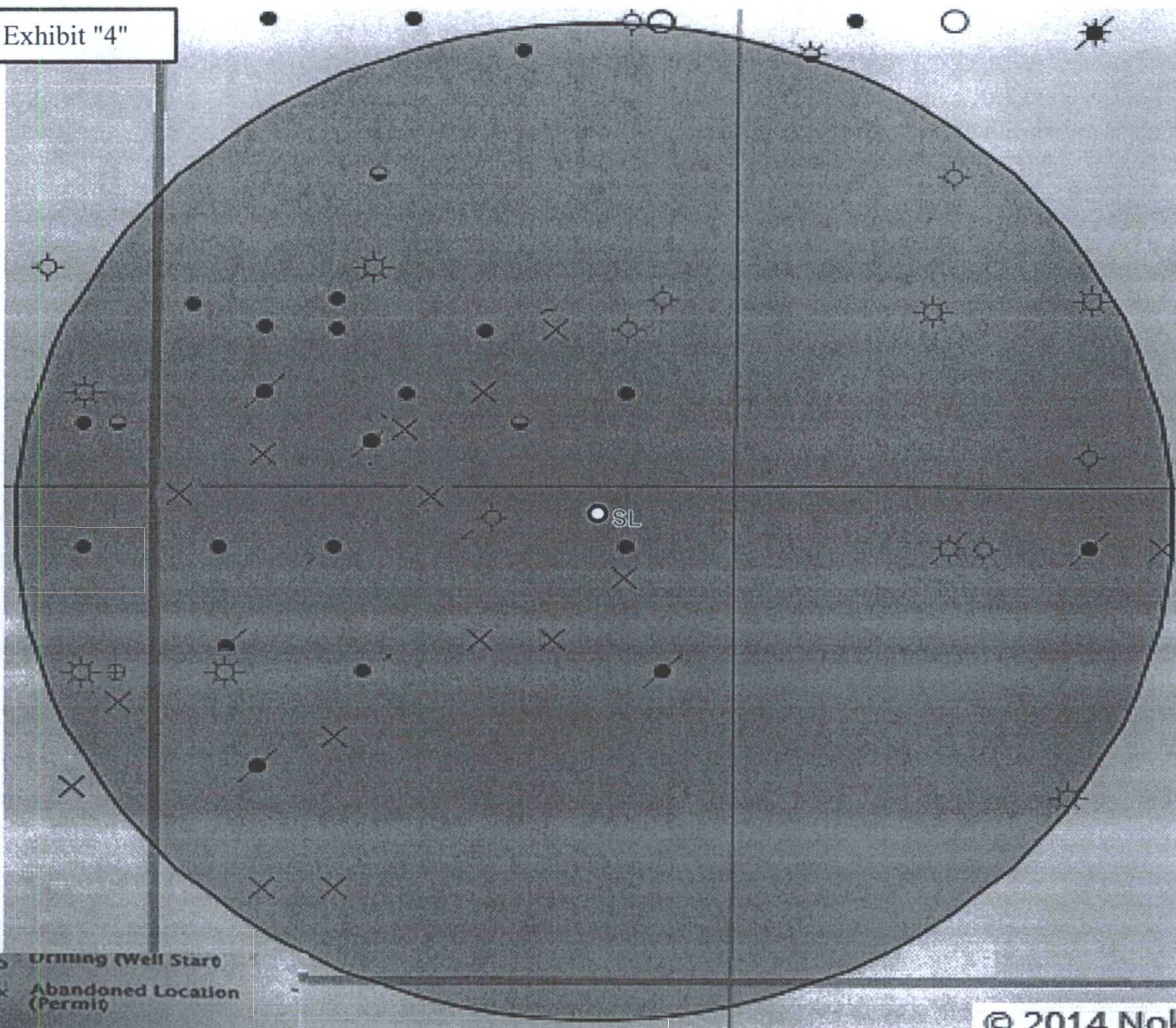
Exhibit D: Access Road

NM T19S R32E

Ocelot 34 #1H

Tonto 31 B2BO  Tonto 31 B2AP Fed

Exhibit "4"

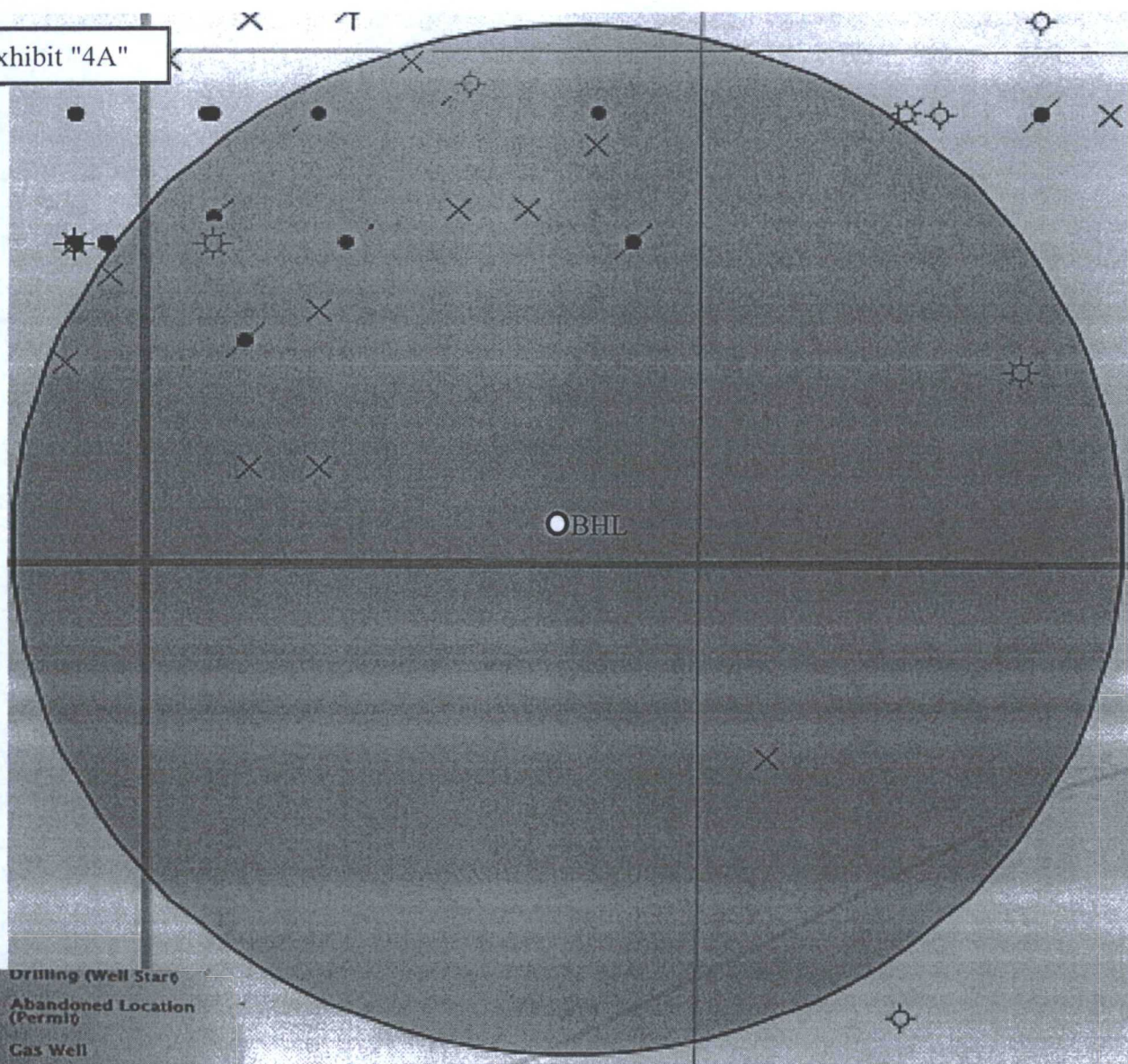


© 2014 Noh

- Drilling (Well Start)
- × Abandoned Location (Permit)
- ☆ Gas Well
- Oil Well
- ✱ Oil and Gas Well
- Other (Observation, etc)
- ◇ Injection Well
- ◇ Suspended
- ✱ Plugged Gas Well
- ✱ Plugged Oil Well
- ✱ Plugged Oil and Gas
- ◇ Dry Hole (No Shows)
- ☆ Dry Hole w/Gas Show
- ◇ Dry Hole w/Oil Show
- ☆ Dry Hole w/Oil and Gas Show

Surface Location
Tonto 31 B2BO Fed #1H
Sec 31 T19S R33E

Exhibit "4A"



- Drilling (Well Start)
- x Abandoned Location (Permit)
- ☆ Gas Well
- Oil Well
- ★ Oil and Gas Well
- Other (Observation, etc)
- ◇ Injection Well
- ◇ Suspended
- ✱ Plugged Gas Well
- ✱ Plugged Oil Well
- ✱ Plugged Oil and Gas
- ◇ Dry Hole (No Shows)
- ☆ Dry Hole w/Gas Show
- ◇ Dry Hole w/Oil Show
- ✱ Dry Hole w/Oil and Gas Show

Bottom Hole Location
Tonto 31 B2BO Fed #1H
Sec 31 T19S R33E