

District I
1625 N. French Dr., Hobbs, NM 88240
Phone: (575) 393-6161 Fax: (575) 393-0720
District II
811 S. First St., Artesia, NM 88210
Phone: (575) 748-1283 Fax: (575) 748-9720
District III
1000 Rio Brazos Road, Aztec, NM 87410
Phone: (505) 334-6178 Fax: (505) 334-6170
District IV
1220 S. St. Francis Dr., Santa Fe, NM 87505
Phone: (505) 476-3460 Fax: (505) 476-3462

State of New Mexico
Energy, Minerals & Natural Resources Department
OIL CONSERVATION DIVISION
1220 South St. Francis Dr.
Santa Fe, NM 87505

HOBBS OCD

JUL 06 2016

RECEIVED

Form C-102
Revised August 1, 2011
Submit one copy to appropriate
District Office

☐ AMENDED REPORT

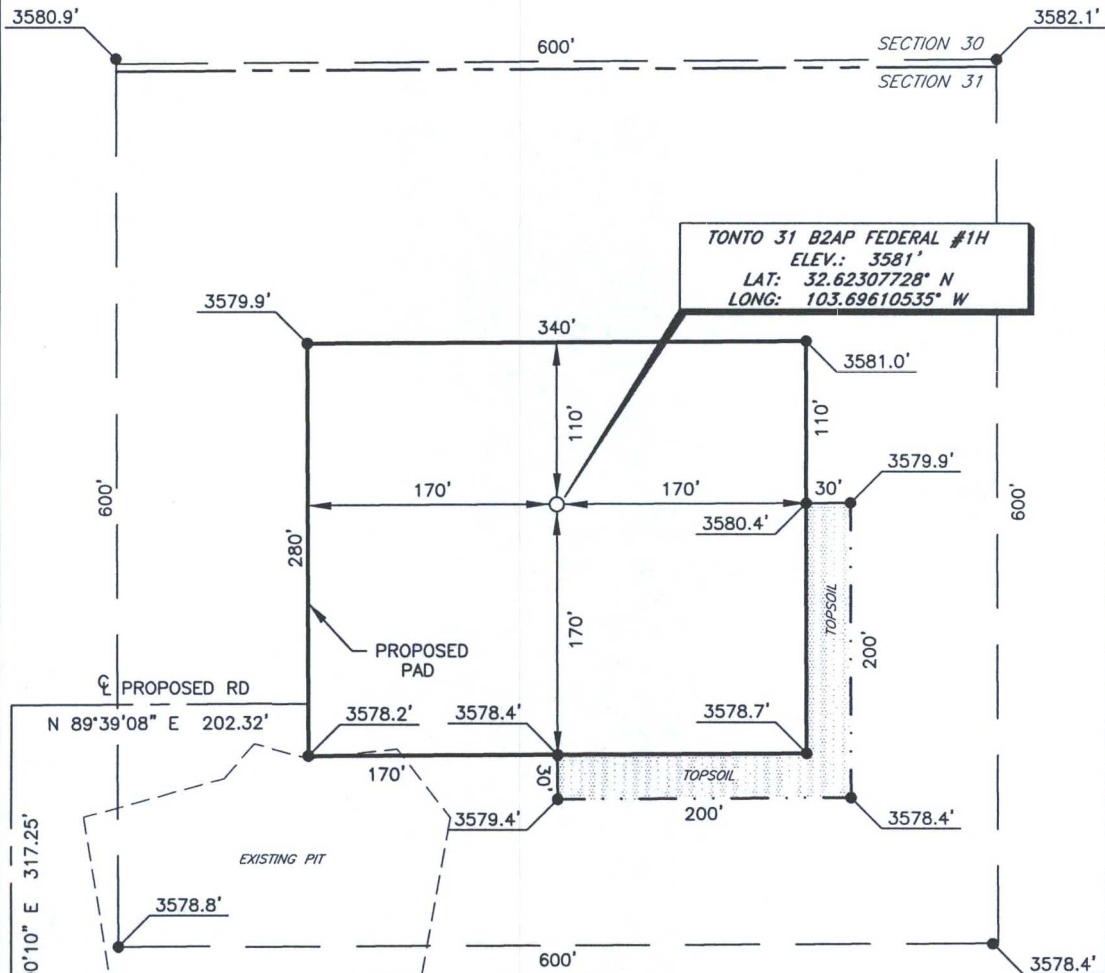
WELL LOCATION AND ACREAGE DEDICATION PLAT

1 API Number 30-025-43957		2 Pool Code 27220		3 Pool Name GEM BONE SPRING		K2			
4 Property Code 716491		5 Property Name TONTO 31 B2AP FEDERAL				6 Well Number 1H			
7 GRID NO. 14744		8 Operator Name MEWBOURNE OIL COMPANY				9 Elevation 3581'			
10 Surface Location									
UL or lot no. A	Section 31	Township 19S	Range 33E	Lot Idn	Feet from the 295	North/South line NORTH	Feet From the 830	East/West line EAST	County LEA
11 Bottom Hole Location If Different From Surface									
UL or lot no. P	Section 31	Township 19S	Range 33E	Lot Idn	Feet from the 330	North/South line SOUTH	Feet from the 660	East/West line EAST	County LEA
12 Dedicated Acres 160		13 Joint or Infill		14 Consolidation Code		15 Order No.			

No allowable will be assigned to this completion until all interest have been consolidated or a non-standard unit has been approved by the division.

<p>16</p> <p>N 89°38'28" E 2657.39'</p> <p>GEODETIC DATA NAD 27 GRID - NM EAST</p> <p>Lot 1</p> <p>SURFACE LOCATION</p> <p>N 590975.1 - E 696191.5</p> <p>LAT: 32.62307728° N LONG: 103.69610535° W</p> <p>BOTTOM HOLE</p> <p>N 586319.0 - E 696387.1</p> <p>CORNER DATA NAD 27 GRID - NM EAST</p> <p>Lot 2</p> <p>A: FOUND BRASS CAP "1943" N 585962.9 - E 691752.2</p> <p>B: FOUND BRASS CAP "1912" N 588604.7 - E 691734.0</p> <p>C: FOUND BRASS CAP "1912" N 591242.6 - E 691720.7</p> <p>D: FOUND BRASS CAP "1912" N 591259.3 - E 694377.5</p> <p>Lot 3</p> <p>E: FOUND BRASS CAP "1912" N 591275.0 - E 697019.7</p> <p>F: CALCULATED CORNER N 585992.5 - E 697048.8</p> <p>G: FOUND BRASS CAP "1912" N 585978.5 - E 694402.3</p> <p>Lot 4</p> <p>S 89°39'47" W 2650.69'</p>		<p>17 OPERATOR CERTIFICATION</p> <p>I hereby certify that the information contained herein is true and complete to the best of my knowledge and belief, and that this organization either owns a working interest or unleased mineral interest in the land including the proposed bottom hole location or has a right to drill this well at this location pursuant to a contract with an owner of such a mineral or working interest, or to a voluntary pooling agreement or a compulsory pooling order heretofore entered by the division.</p> <p>BRADLEY BISHOP 2-5-15 Signature Date Printed Name</p> <p>E-mail Address</p>		<p>18 SURVEYOR CERTIFICATION</p> <p>I hereby certify that the well location shown on this plat was plotted from field notes of actual surveys made by me or under my supervision, and that the same is true and correct to the best of my belief.</p> <p>11-11-14 Date of Survey</p> <p>Signature and Seal of Professional Surveyor</p> <p>19680 Certificate Number</p>	
---	--	---	--	---	--


MEWBOURNE OIL COMPANY
TONTON 31 B2AP FEDERAL #1H
(295' FNL & 830' FEL)
SECTION 31, T19S, R33E
N. M. P. M., LEA CO., NEW MEXICO



DIRECTIONS TO LOCATION

*From the intersection of CR-126A (Maljamar) and CR-126 (Dry Lake);
Go East on lease road approx. 5.0 miles to a lease road on right;
Turn right and go South turning Southeast approx. 2.1 miles to a "T";
Turn right and go Southwest approx. 0.9 miles to a "Y";
Take left fork and go South turning Southeast approx. 0.3 miles to to a "T";
Turn left and go East approx. 800 feet to proposed road.
Turn left following proposed and go North approx. 315 feet;
Turn right and go East approx. 372 feet to location on the left.*


SCALE: 1" = 100'



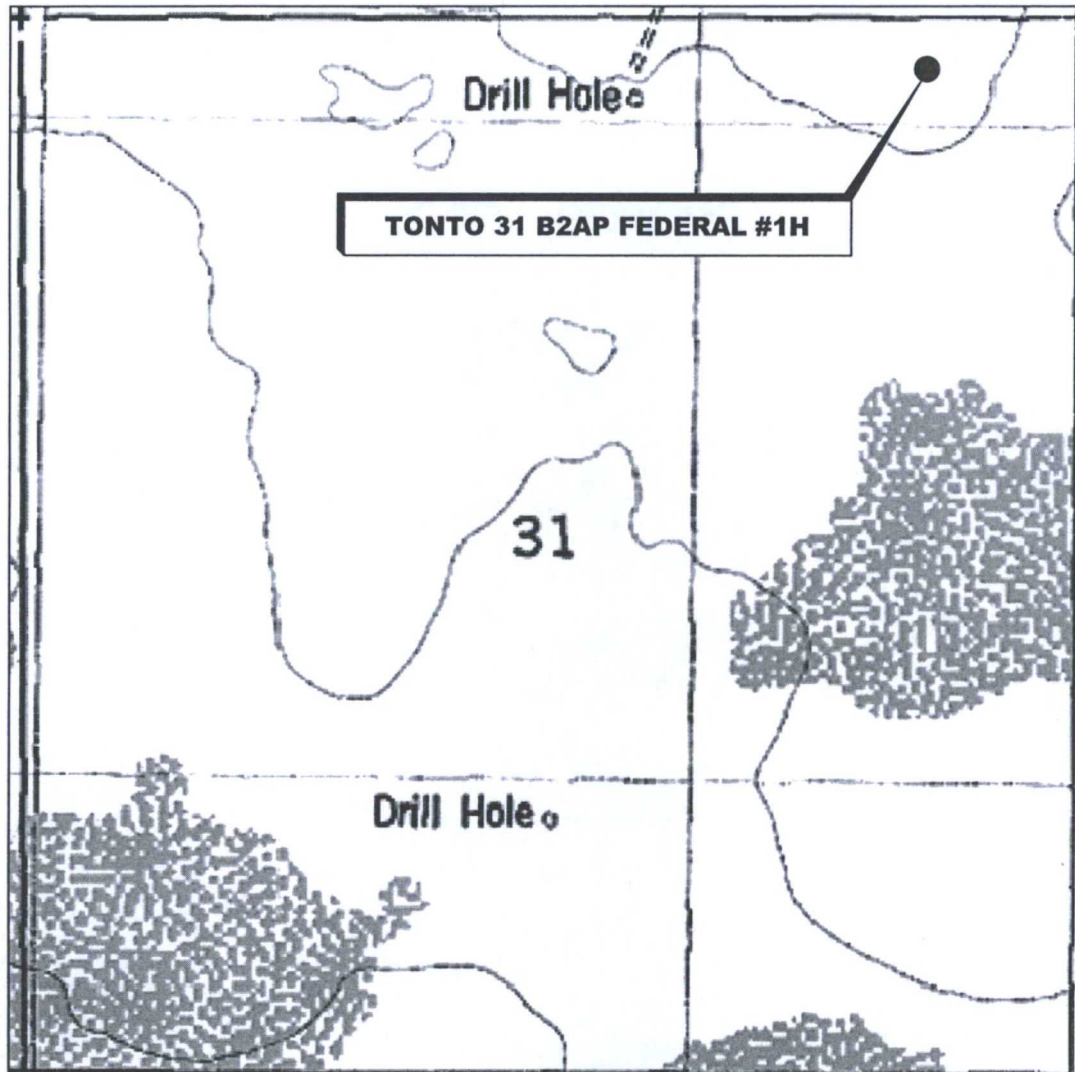
BEARINGS ARE
NAD 27 GRID - NM EAST
DISTANCES ARE
GROUND.

Firm No.: TX 10193838 NM 4655451

Copyright 2014 – All Rights Reserved

				SCALE: 1" = 100'
				DATE: 11-11-14
				SURVEYED BY: BK/KR
NO.	REVISION	DATE		DRAWN BY: JC
JOB NO.: LS140472				APPROVED BY: RMH
DWG. NO.: 140472PAD			308 W. BROADWAY ST., HOBBS, NM 88240 (575) 964-8200	SHEET : 1 OF 1

LOCATION VERIFICATION MAP



*SECTION 31, TWP. 19 SOUTH, RGE. 33 EAST,
N. M. P. M., LEA COUNTY, NEW MEXICO*

OPERATOR: Mewbourne Oil Company
 LEASE: Tonto 31 B2AP Federal
 WELL NO.: 1H
 ELEVATION: 3581'

LOCATION: 295' FNL & 830' FEL
 CONTOUR INTERVAL: 10'
 USGS TOPO. SOURCE MAP:
Laguna Gatuna, NM (1984)

Firm No.: TX 10193838 NM 4655451

Copyright 2014 - All Rights Reserved

NO.	REVISION	DATE
JOB NO.:	LS140472	
DWG. NO.:	140472LVM	

RRC

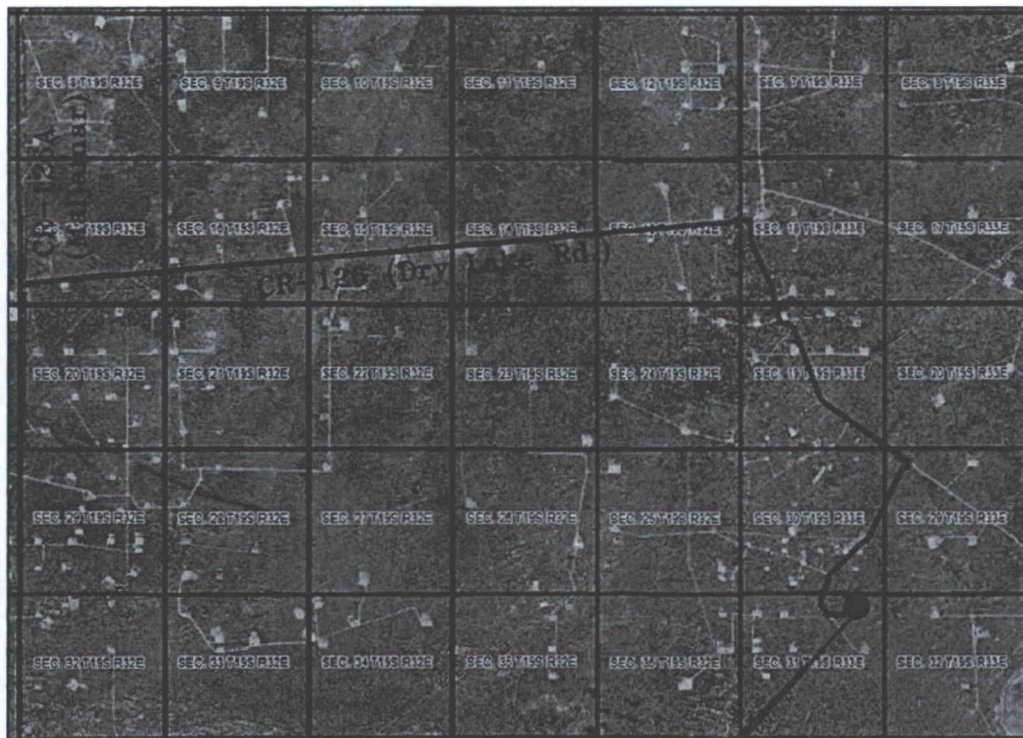
308 W. BROADWAY ST., HOBBS, NM 88240 (575) 964-8200

SCALE: N.T.S.
DATE: 11-101-14
SURVEYED BY: BK/KR
DRAWN BY: JC
APPROVED BY: RMH
SHEET : 1 OF 1

EXHIBIT "3B"

VICINITY MAP

NOT TO SCALE



TONTO 31 B2AP FEDERAL #1H

*SECTION 31, TWP. 19 SOUTH, RGE. 33 EAST,
N. M. P. M., LEA COUNTY, NEW MEXICO*

OPERATOR: Mewbourne Oil Company
LEASE: Tonto 31 B2AP Federal
WELL NO.: 1H

LOCATION: 295' FNL & 830' FEL
ELEVATION: 3581'

Firm No.: TX 10193838 NM 4655451

Copyright 2014 - All Rights Reserved

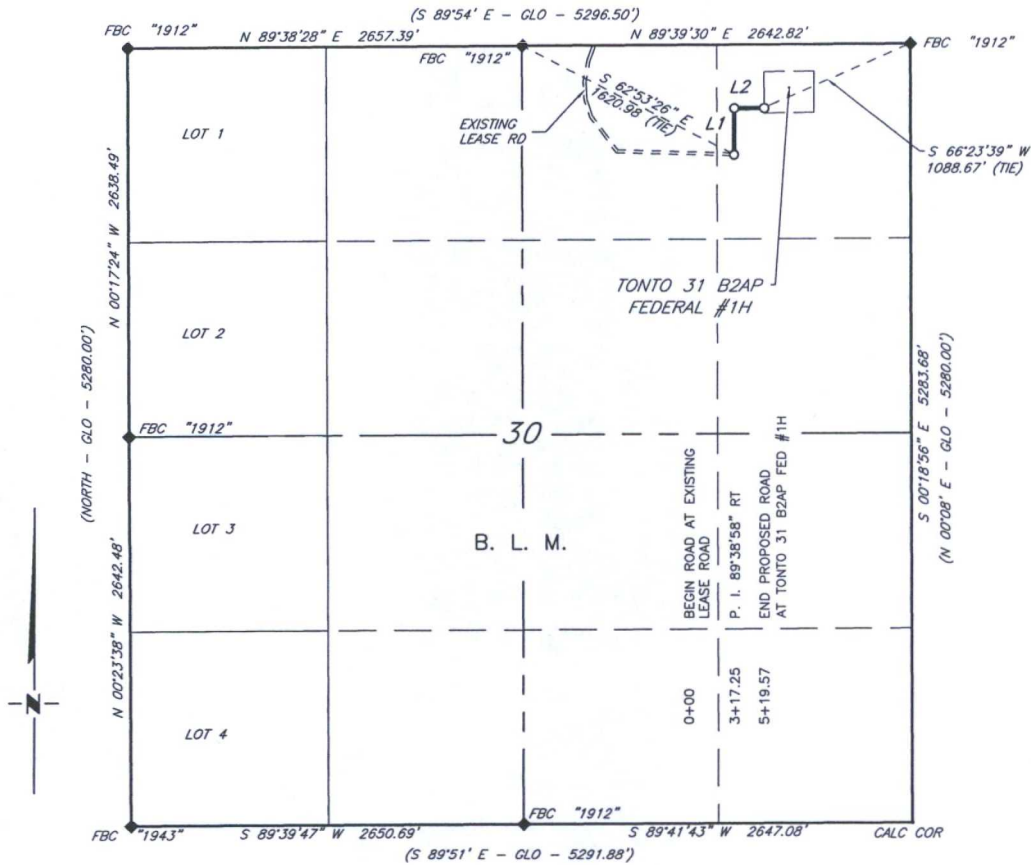
NO.	REVISION	DATE
JOB NO.: LS140472		
DWG. NO.: 140472VM		

RRC

308 W. BROADWAY ST., HOBBS, NM 88240 (575) 964-8200

SCALE: N.T.S.
DATE: 11-10-14
SURVEYED BY: BK/KR
DRAWN BY: JC
APPROVED BY: RMH
SHEET : 1 OF 1

MEWBOURNE OIL COMPANY
PROPOSED ROAD EASEMENT FOR THE
TONTON 31 B2AP FED #1H
SECTION 31, T19S, R33E
N. M. P. M., LEA CO., NEW MEXICO



DESCRIPTION

A strip of land 30 feet wide, being 519.57 feet or 31.489 rods in length lying in Section 31, Township 19 South, Range 33 East, N. M. P. M., Lea County, New Mexico, being 15 feet left and 15 feet right of the following described survey of a centerline across Section 31;

BEGINNING at Engr. Sta. 0+00, a point which bears S 67°53'26" E, 1620.91 feet from a brass cap, stamped "1912", found for the North quarter corner of Section 31;

Thence N 00°00'10" E, 317.25 feet to Engr. Sta. 3+17.25, a P. I. of 89°38'58" right;

Thence N 89°39'08" E, 202.32 feet to Engr. Sta. 5+19.57, the End of Survey, a point which bears S 66°23'39" W, 1088.67 feet from a brass cap, stamped "1912", found for the Northeast corner of Section 31.

Said strip of land contains 0.358 acres, more or less, and is allocated by forties as follows:

SCALE: 1" = 1000'
0 500 1000
NE 1/4 NE 1/4 0.358 Ac.

BEARINGS ARE GRID NAD 27
NM EAST
DISTANCES ARE HORIZ. GROUND.

LEGEND
() RECORD DATA - GLO
◆ FOUND MONUMENT AS NOTED
— PROPOSED ROAD

I, R. M. Howett, a N. M. Professional Surveyor, hereby certify that I prepared this plat from an actual survey made on the ground under my direct supervision, said survey and plat meet the Min. Stds. for Land Surveying in the State of N. M. and are true and correct to the best of my knowledge and belief.

Robert M. Howett
Robert M. Howett NM PS 19680



Firm No.: TX 10193838 NM 4655451

Copyright 2014 - All Rights Reserved

NO.	REVISION	DATE
JOB NO.:	LS140472	
DWG. NO.:	140472_RD	

RRC

308 W. BROADWAY ST., HOBBS, NM 88240 (575) 964-8200

SCALE: 1" = 1000'
DATE: 11-11-2014
SURVEYED BY: BK/KR
DRAWN BY: LNY
APPROVED BY: RMH
SHEET : 1 OF 1

MEWBOURNE OIL COMPANY
PROPOSED ROAD EASEMENT FROM THE
EXISTING LEASE ROAD TO THE TONTO
31 B2AP FED #1H
SECTION 31, T19S, R33E
N. M. P. M., LEA CO., NEW MEXICO

DESCRIPTION

A strip of land 30 feet wide, being 519.57 feet or 31.489 rods in length lying in Section 31, Township 19 South, Range 33 East, N. M. P. M., Lea County, New Mexico, being 15 feet left and 15 feet right of the following described survey of a centerline across State of New Mexico Land;

BEGINNING at Engr. Sta. 0+00, a point which bears S 67°53'26" E, 1620.91 feet from a brass cap, stamped "1912", found for the North quarter corner of Section 31;

Thence N 00°00'10" E, 317.25 feet to Engr. Sta. 3+17.25, a P. I. of 89°38'58" right;

Thence N 89°39'08" E, 202.32 feet to Engr. Sta. 5+19.57, a to End of Survey, a point which bears S 66°23'39" W, 1088.67 feet from a brass cap, stamped "1912", found for the Northeast corner of Section 31.

Said strip of land contains 0.358 acres, more or less, and is allocated by forties as follows:

NE 1/4 NE 1/4

0.358 Ac.

SCALE: 1" = 1000'
0 500 1000

BEARINGS ARE GRID NAD 83
NM EAST
DISTANCES ARE HORIZ. GROUND.

LEGEND

() RECORD DATA - GLO

- ◆ FOUND MONUMENT AS NOTED
- PROPOSED ROAD
- OVERHEAD UTILITIES
- EXISTING BPL

LINE TABLE		
LINE	BEARING	LENGTH
L1	N 00°00'10" E	317.25'
L2	N 89°39'08" E	202.32'

I, R. M. Howett, a N. M. Professional Surveyor, hereby certify that I prepared this plat from an actual survey made on the ground under my direct supervision, said survey and plat meet the Min. Stds. for Land Surveying in the State of N. M. and are true and correct to the best of my knowledge and belief.

Robert M. Howett
Robert M. Howett NM PS 19680



Firm No.: TX 10193838 NM 4655451

Copyright 2014 - All Rights Reserved

NO.	REVISION	DATE
JOB NO.: LS140472		
DWG. NO.: 140472_RD2		

RRC

308 W. BROADWAY ST., HOBBS, NM 88240 (575) 964-8200

SCALE: 1" = 1000'
DATE: 9-4-2014
SURVEYED BY: IE/GB
DRAWN BY: LNY
APPROVED BY: RMH
SHEET : 2 OF 2

Exhibit D: Access Road

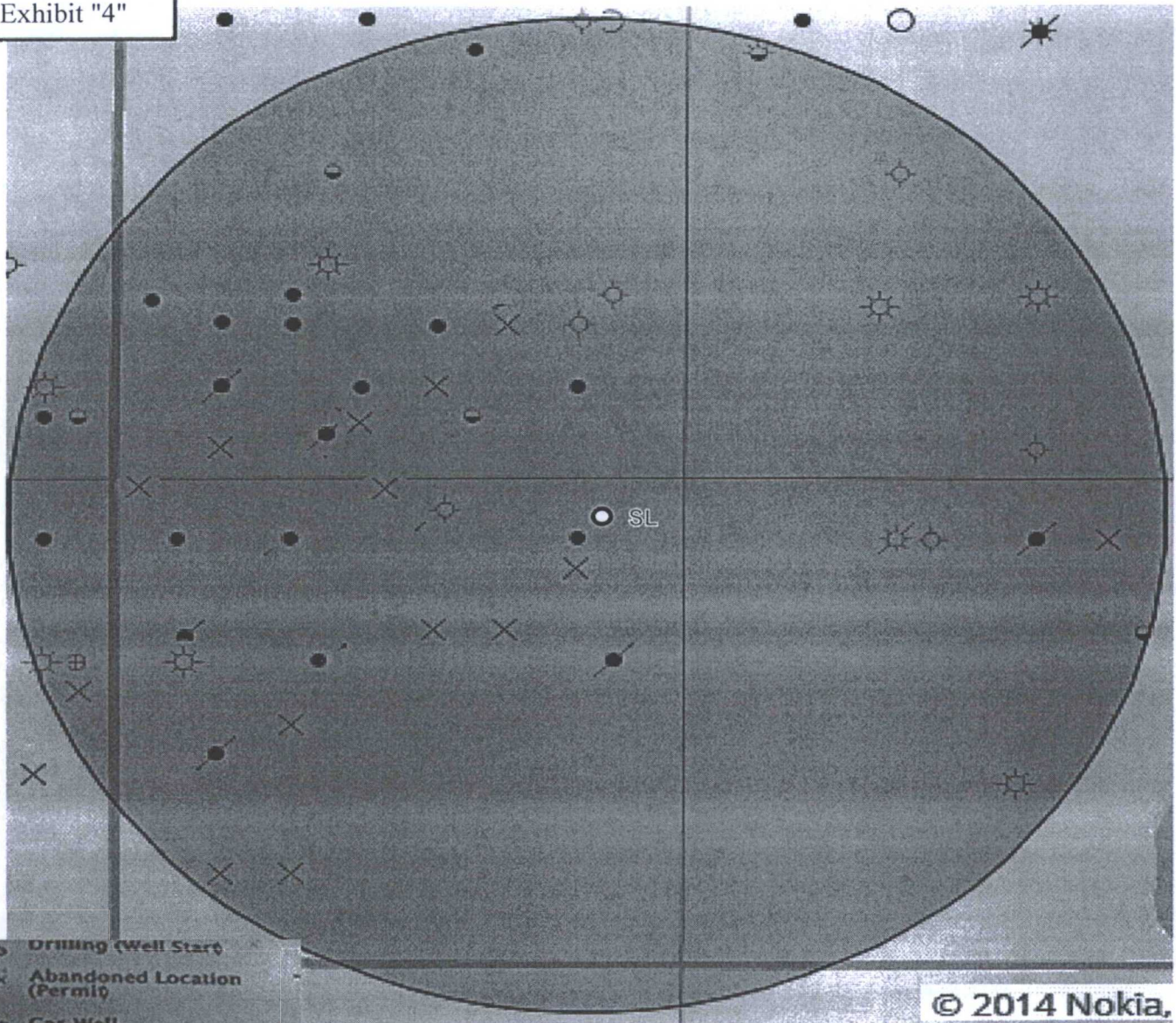
NM T19S R32E

Ocelot 34 #1H

Tonto 31 B2BO  Tonto 31 B2AP Fed

Google Earth
Earth Point

Exhibit "4"

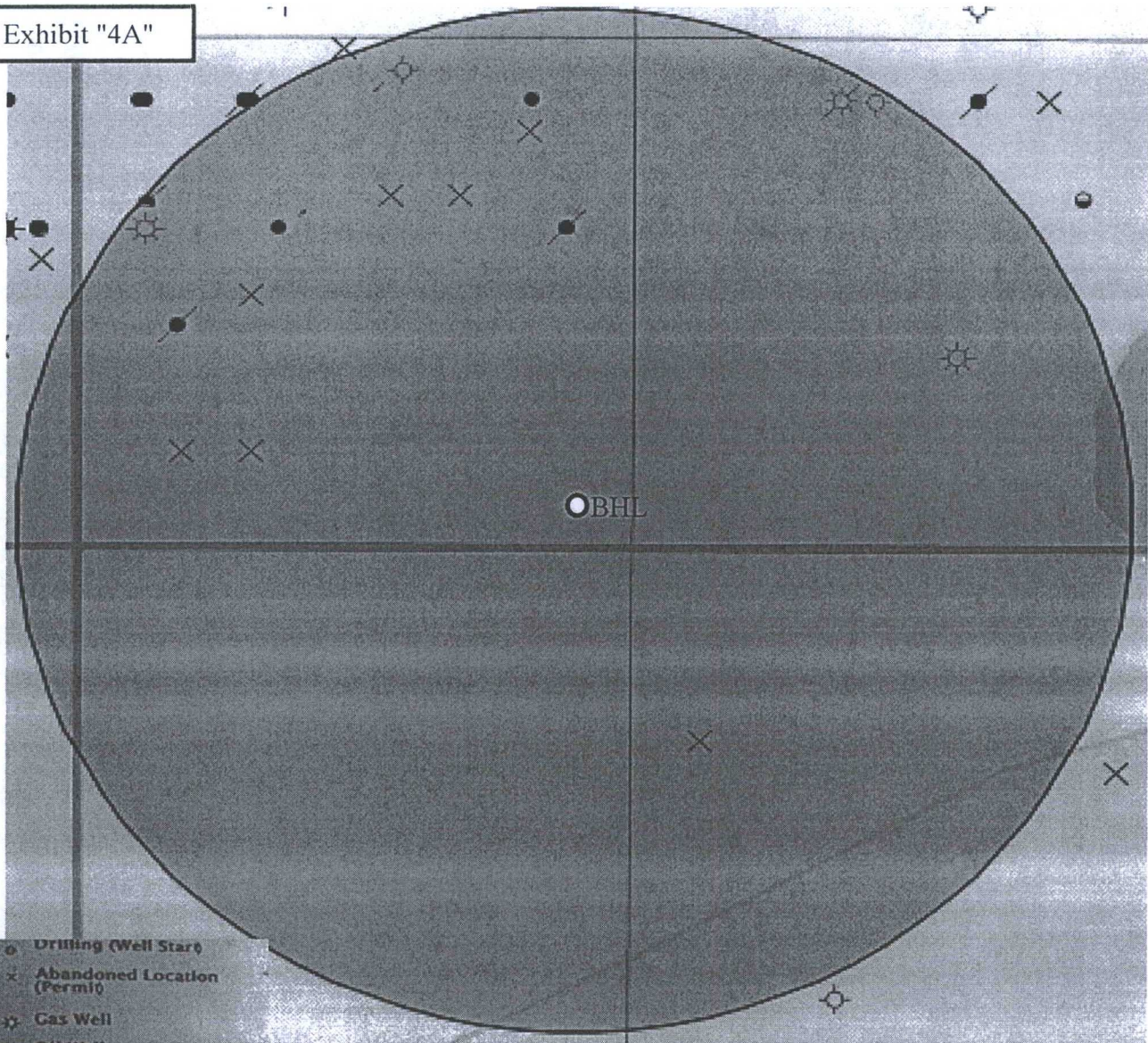


© 2014 Nokia.

- Drilling (Well Start)
- × Abandoned Location (Permit)
- ✱ Gas Well
- Oil Well
- ✱ Oil and Gas Well
- Other (Observation, etc)
- ✱ Injection Well
- ◇ Suspended
- ✱ Plugged Gas Well
- ✱ Plugged Oil Well
- ✱ Plugged Oil and Gas
- ◇ Dry Hole (No Shows)
- ✱ Dry Hole w/Gas Show
- ◇ Dry Hole w/Oil Show
- ✱ Dry Hole w/Oil and Gas Show

Surface Location
Tonto 31 B2AP Fed #1H
Sec 31 T19S R33E

Exhibit "4A"



- Drilling (Well Start)
- × Abandoned Location (Permit)
- ☆ Gas Well
- Oil Well
- ✱ Oil and Gas Well
- Other (Observation, etc)
- ✱ Injection Well
- Suspended
- ✱ Plugged Gas Well
- ✱ Plugged Oil Well
- ✱ Plugged Oil and Gas
- Dry Hole (No Shows)
- ✱ Dry Hole w/Gas Show
- ✱ Dry Hole w/Oil Show
- ✱ Dry Hole w/Oil and Gas Show

Bottom Hole Location
Tonto 31 B2AP Federal #1H
Sec 31 T19S R33E