

JUL 19 2016

District I  
1625 N. French Dr., Hobbs, NM 88240  
Phone: (575) 393-6161 Fax: (575) 393-0720  
District II  
811 S. First St., Artesia, NM 88210  
Phone: (575) 748-1283 Fax: (575) 748-9720  
District III  
1000 Rio Brazos Road, Aztec, NM 87410  
Phone: (505) 334-6178 Fax: (505) 334-6170  
District IV  
1220 S. St. Francis Dr., Santa Fe, NM 87505  
Phone: (505) 476-3460 Fax: (505) 476-3462

State of New Mexico  
Energy, Minerals & Natural Resources Department  
OIL CONSERVATION DIVISION  
1220 South St. Francis Dr.  
Santa Fe, NM 87505

RECEIVED

Form C-102

Revised August 1, 2011

Submit one copy to appropriate  
District Office

☐ AMENDED REPORT

## WELL LOCATION AND ACREAGE DEDICATION PLAT

<sup>1</sup> API Number <b>30-025-43362</b>	<sup>2</sup> Pool Code <b>97838</b>	<sup>3</sup> Pool Name <b>JENNINGS UPPER Bone Spring Shale</b>
<sup>4</sup> Property Code <b>316515</b>	<sup>5</sup> Property Name <b>JENNINGS 34 A2MD FED COM</b>	
<sup>7</sup> OGRID NO. <b>14744</b>	<sup>8</sup> Operator Name <b>MEWBOURNE OIL COMPANY</b>	<sup>6</sup> Well Number <b>1H</b>
		<sup>9</sup> Elevation <b>3317'</b>

<sup>10</sup> Surface Location

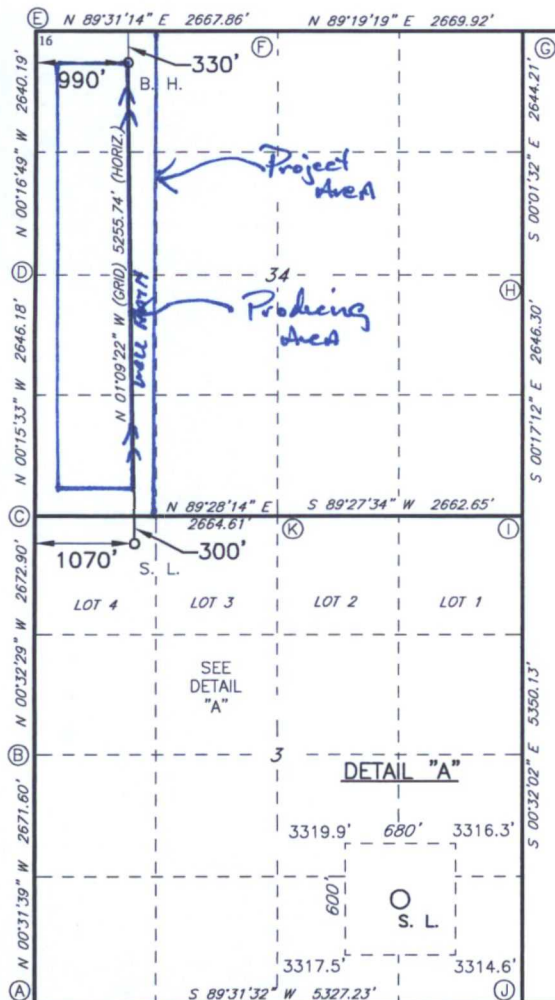
UL or lot no.	Section	Township	Range	Lot Idn	Feet from the	North/South line	Feet From the	East/West line	County
<b>AD</b>	<b>3</b>	<b>26S</b>	<b>32E</b>		<b>300</b>	<b>NORTH</b>	<b>1070</b>	<b>WEST</b>	<b>LEA</b>

<sup>11</sup> Bottom Hole Location If Different From Surface

UL or lot no.	Section	Township	Range	Lot Idn	Feet from the	North/South line	Feet from the	East/West line	County
<b>D</b>	<b>34</b>	<b>25S</b>	<b>32E</b>		<b>330</b>	<b>NORTH</b>	<b>990</b>	<b>WEST</b>	<b>LEA</b>

<sup>12</sup> Dedicated Acres <b>160</b>	<sup>13</sup> Joint or Infill	<sup>14</sup> Consolidation Code	<sup>15</sup> Order No.
---	-------------------------------	----------------------------------	-------------------------

No allowable will be assigned to this completion until all interest have been consolidated or a non-standard unit has been approved by the division.



**GEODETIC DATA**  
NAD 27 GRID - NM EAST

**SURFACE LOCATION**  
N 392999.9 - E 706211.6  
LAT: 32.07872317° N  
LONG: 103.66756037° W

**BOTTOM HOLE**  
N 398253.5 - E 706105.6

**CORNER DATA**  
NAD 27 GRID - NM EAST

A: FOUND BRASS CAP "1939"  
N 387946.7 - E 705188.9

B: FOUND BRASS CAP "1939"  
N 390617.7 - E 705164.3

C: FOUND BRASS CAP "1916"  
N 393289.9 - E 705139.1

D: FOUND BRASS CAP "1939"  
N 395935.6 - E 705127.1

E: CALCULATED CORNER  
N 398575.2 - E 705114.2

F: FOUND BRASS CAP "1939"  
N 398597.5 - E 707781.4

G: FOUND BRASS CAP "1939"  
N 398629.1 - E 710450.6

H: FOUND BRASS CAP "1939"  
N 395985.4 - E 710451.8

I: FOUND BRASS CAP "1916"  
N 393339.7 - E 710465.0

J: FOUND BRASS CAP "1939"  
N 387990.8 - E 710514.9

K: FOUND BRASS CAP "1916"  
N 393314.5 - E 707803.0

<sup>17</sup> OPERATOR CERTIFICATION

I hereby certify that the information contained herein is true and complete to the best of my knowledge and belief, and that this organization either owns a working interest or unleased mineral interest in the land including the proposed bottom hole location or has a right to drill this well at this location pursuant to a contract with an owner of such a mineral or working interest, or to a voluntary pooling agreement or a compulsory pooling order heretofore entered by the division.

Signature: **B. Bishop** Date: **9-29-15**  
Printed Name: **BRADLEY BISHOP**

E-mail Address

<sup>18</sup> SURVEYOR CERTIFICATION

I hereby certify that the well location shown on this plat was plotted from field notes of actual surveys made by me or under my supervision, and that the same is true and correct to the best of my belief.

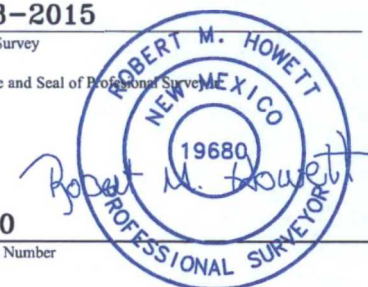
**9-3-2015**

Date of Survey

Signature and Seal of Professional Surveyor

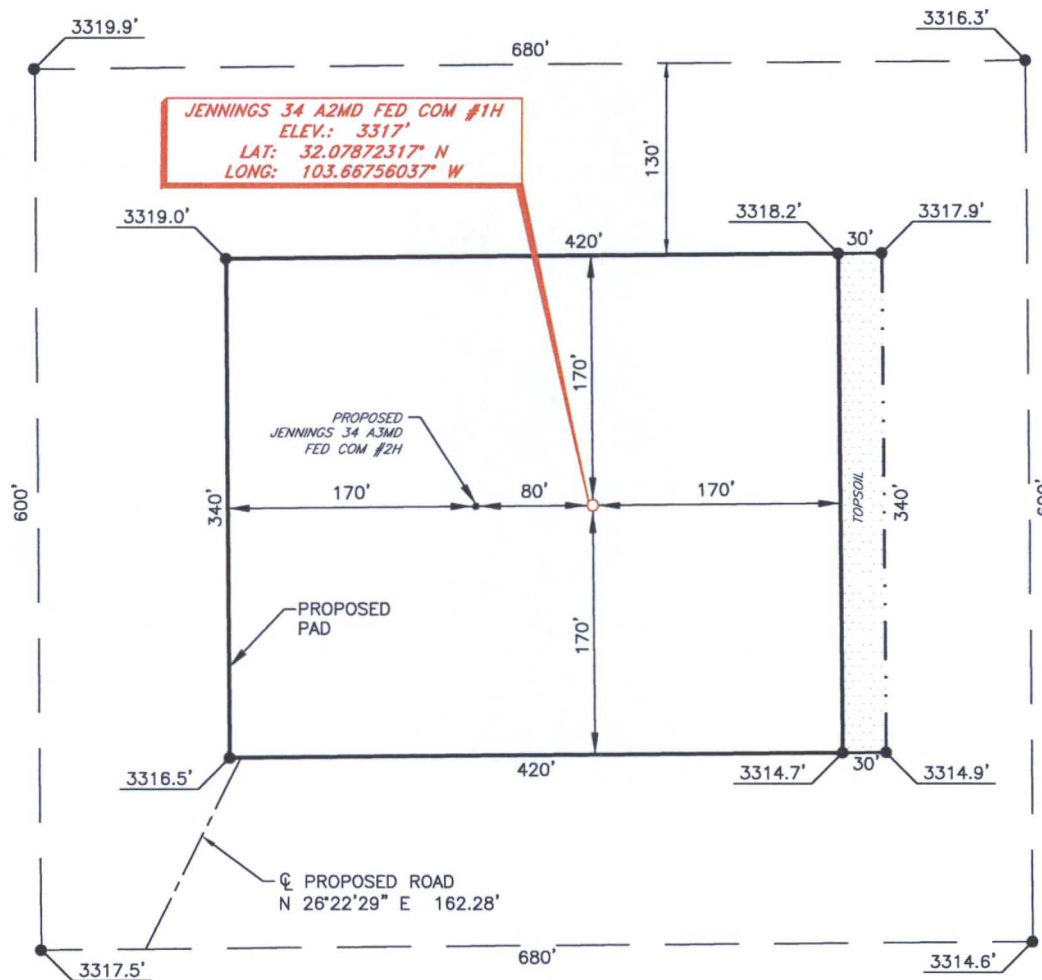
**19680**

Certificate Number



3

MEWBOURNE OIL COMPANY  
 JENNINGS 34 A2MD FED COM #1H  
 (300' FNL & 1070' FWL)  
 SECTION 3, T26S, R32E  
 N. M. P. M., LEA COUNTY, NEW MEXICO



DIRECTIONS TO LOCATION

From the intersection of CR-1 (Orla Hwy.) and Pipeline Rd.  
 Go North on CR-1 approx. 0.9 miles to a lease road on the right;  
 Turn right and go East approx. 0.1 miles to the Southeast corner of existing pad;  
 Turn left and go North approx. 204 feet to a proposed road on the Northeast corner of existing pad;  
 Go Northeast on proposed road approx. 334 feet to location on the right.

SCALE: 1" = 100'  
 0 50 100

BEARINGS ARE  
 NAD 27 GRID - NM EAST  
 DISTANCES ARE GROUND

Firm No.: TX 10193838 NM 4655451

Copyright 2014 - All Rights Reserved

NO.	REVISION	DATE
JOB NO.:	LS1508446	
DWG. NO.:	1508446PAD	

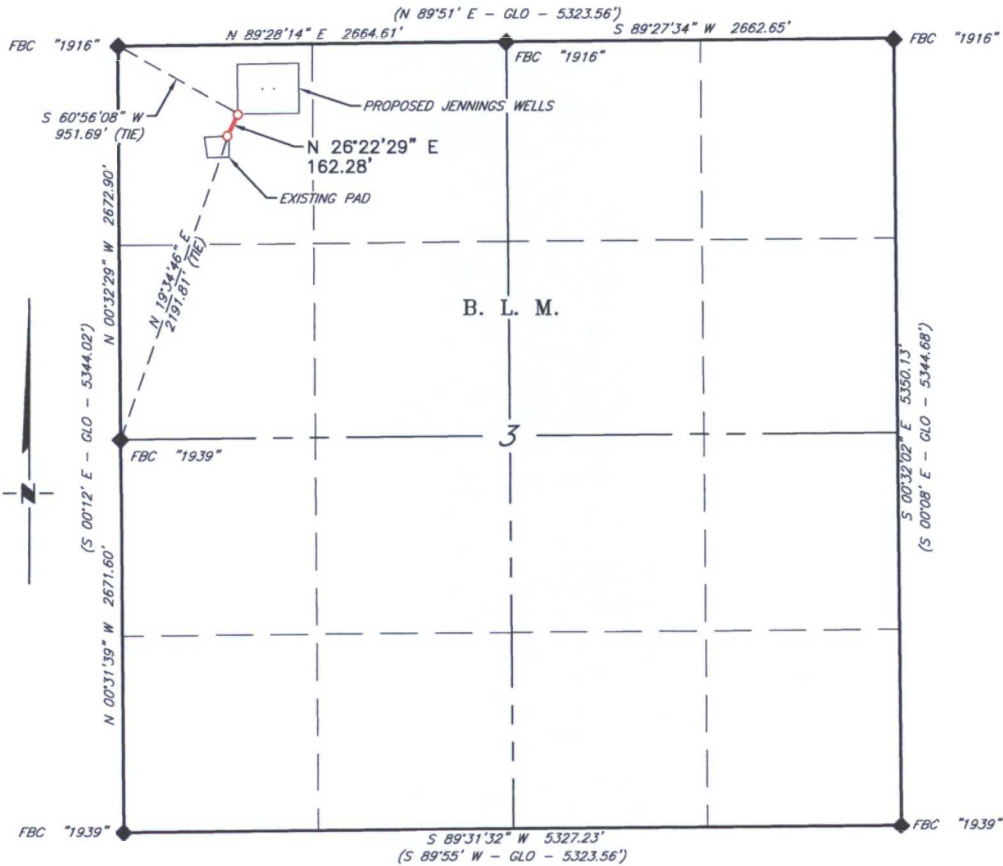
**RRC**

308 W. BROADWAY ST., HOBBS, NM 88240 (575) 964-8200

SCALE: 1" = 100'
DATE: 9-3-2015
SURVEYED BY: ML/CE
DRAWN BY: LPS
APPROVED BY: RMH
SHEET : 1 OF 1



**MEWBOURNE OIL COMPANY  
PROPOSED ACCESS ROAD FOR THE  
JENNINGS 34 A3MD FED COM #2H  
SECTION 3, T26S, R32E,  
N. M. P. M., LEA CO., NEW MEXICO**



**DESCRIPTION**

A strip of land 30 feet wide, being 162.28 feet or 9.835 rods in length lying in Section 3, Township 26 South, Range 32 East, N. M. P. M., Lea County, New Mexico, being 15 feet left and 15 feet right of the following described survey of a centerline across B. L. M. land;

BEGINNING at Engr. Sta. 0+00, a point in the Northwest quarter of Section 3, which bears N 19°34'46" E, 2,191.81 feet from a brass cap, stamped "1939" found for the West quarter corner of Section 3;

Thence N 26°22'29" E, 162.28 feet to Engr. Sta. 1+62.28, the End of Survey, a point which bears S 60°56'08" E, 951.69 feet from a brass cap, stamped "1916" found for the Northwest corner of Section 3.

Said strip of land contains 0.112 acres, more or less, and is allocated by forties as follows:

NW 1/4 NW 1/4      9.835 Rods      0.112 Acres

SCALE: 1" = 1000'  
0      500'      1000'

BEARINGS ARE GRID NAD 27  
NM EAST  
DISTANCES ARE HORIZ. GROUND.

**LEGEND**

- ( ) RECORD DATA - GLO
- ◆ FOUND MONUMENT AS NOTED
- PROPOSED ACCESS ROAD

I, R. M. Howett, a N. M. Professional Surveyor, hereby certify that I prepared this plat from an actual survey made on the ground under my direct supervision, said survey and plat meet the Min. Stds. for Land Surveying in the State of N. M. and are true and correct to the best of my knowledge and belief.

*Robert M. Howett*  
Robert M. Howett      NM PS 19680



Firm No.: TX 10193838 NM 4655451

Copyright 2014 - All Rights Reserved

NO.	REVISION	DATE
JOB NO.:	LS1508447	
DWG. NO.:	1508447RD	

**RRC**

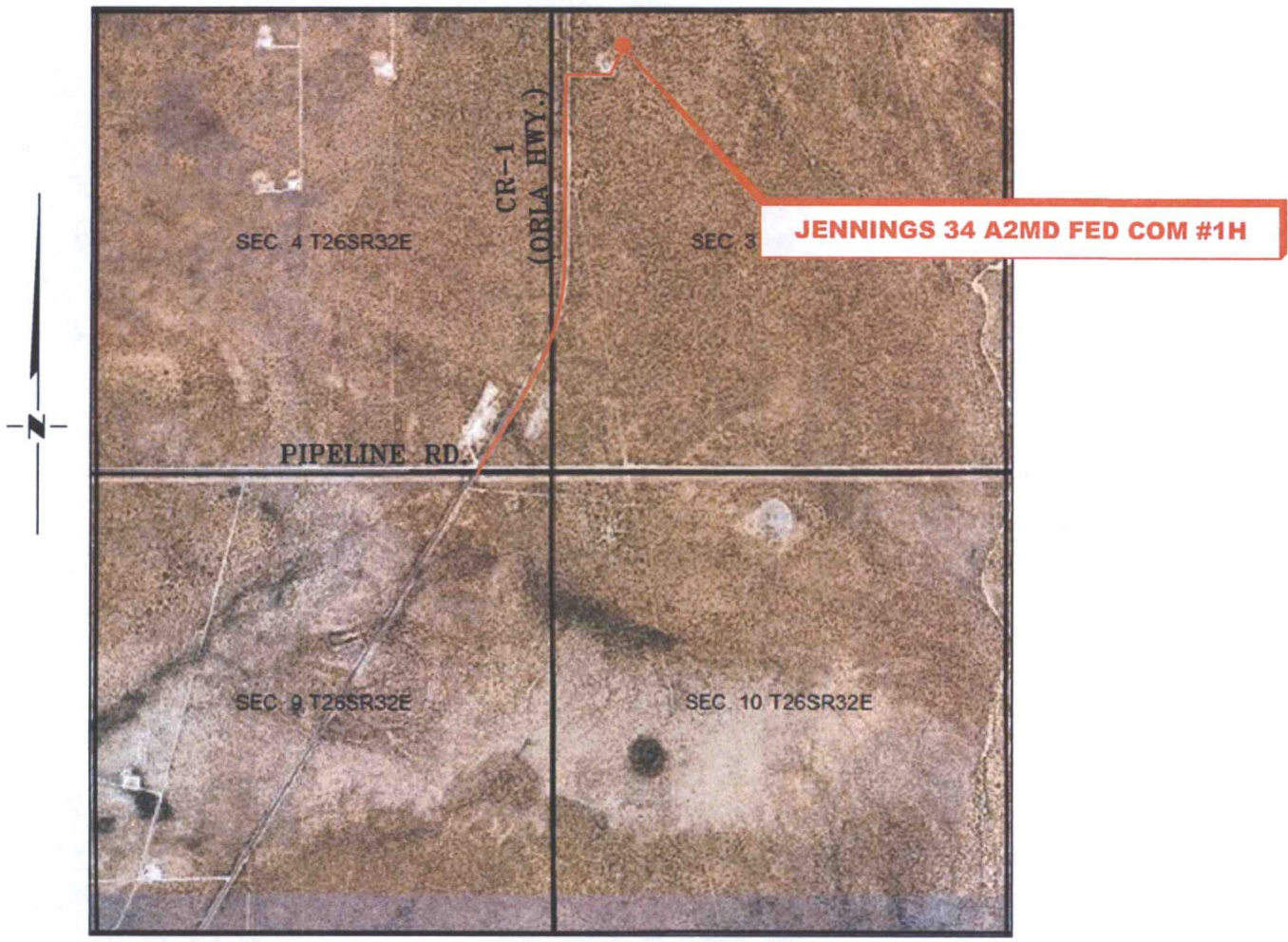
308 W. BROADWAY ST., HOBBS, NM 88240 (575) 964-8200

SCALE: 1" = 1000'
DATE: 9-3-2015
SURVEYED BY: ML/CE
DRAWN BY: LPS
APPROVED BY: RMH
SHEET : 1 OF 1

36

# VICINITY MAP

NOT TO SCALE



*SECTION 3, TWP. 26 SOUTH, RGE. 32 EAST,  
N. M. P. M., LEA CO., NEW MEXICO*

OPERATOR: Mewbourne Oil Company  
 LEASE: Jennings 34 A2MD Fed Com  
 WELL NO.: 1H

LOCATION: 300' FNL & 1070' FWL  
 ELEVATION: 3317'

Firm No.: TX 10193838 NM 4655451

Copyright 2014 - All Rights Reserved

NO.	REVISION	DATE
JOB NO.: LS1508446		
DWG. NO.: 1508446VM		

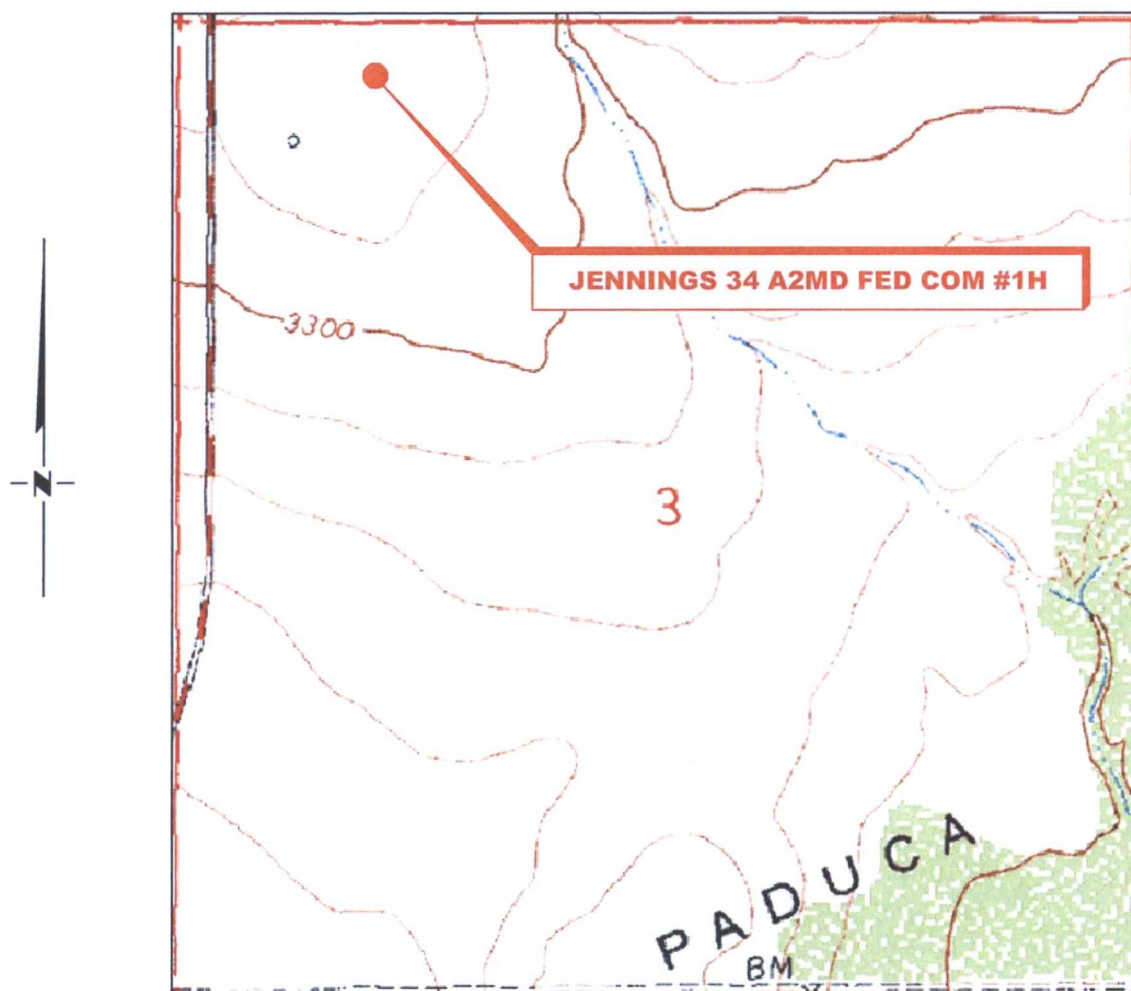


308 W. BROADWAY ST., HOBBS, NM 88240 (575) 964-8200

SCALE: NTS
DATE: 9-3-2015
SURVEYED BY: ML/CE
DRAWN BY: LPS
APPROVED BY: RMH
SHEET : 1 OF 1



# LOCATION VERIFICATION MAP



*SECTION 3, TWP. 26 SOUTH, RGE. 32 EAST,  
N. M. P. M., LEA CO., NEW MEXICO*

OPERATOR: Mewbourne Oil Company  
LEASE: Jennings 34 A2MD Fed Com  
WELL NO.: 1H  
ELEVATION: 3317'

LOCATION: 300' FNL & 1070' FWL  
CONTOUR INTERVAL: 10'  
USGS TOPO. SOURCE MAP:  
Paduca Breaks West, NM (1973)

Firm No.: TX 10193838 NM 4655451

Copyright 2015 - All Rights Reserved

NO.	REVISION	DATE
JOB NO.:	LS1508446	
DWG. NO.:	1508446LVM	

## RRC

308 W. BROADWAY ST., HOBBS, NM 88240 (575) 964-8200

SCALE: 1000'
DATE: 9-3-2015
SURVEYED BY: ML/CE
DRAWN BY: LPS
APPROVED BY: RMH
SHEET : 1 OF 1

Exhibit "4" - SL - Jennings 34 A2MD Fed Com #1H

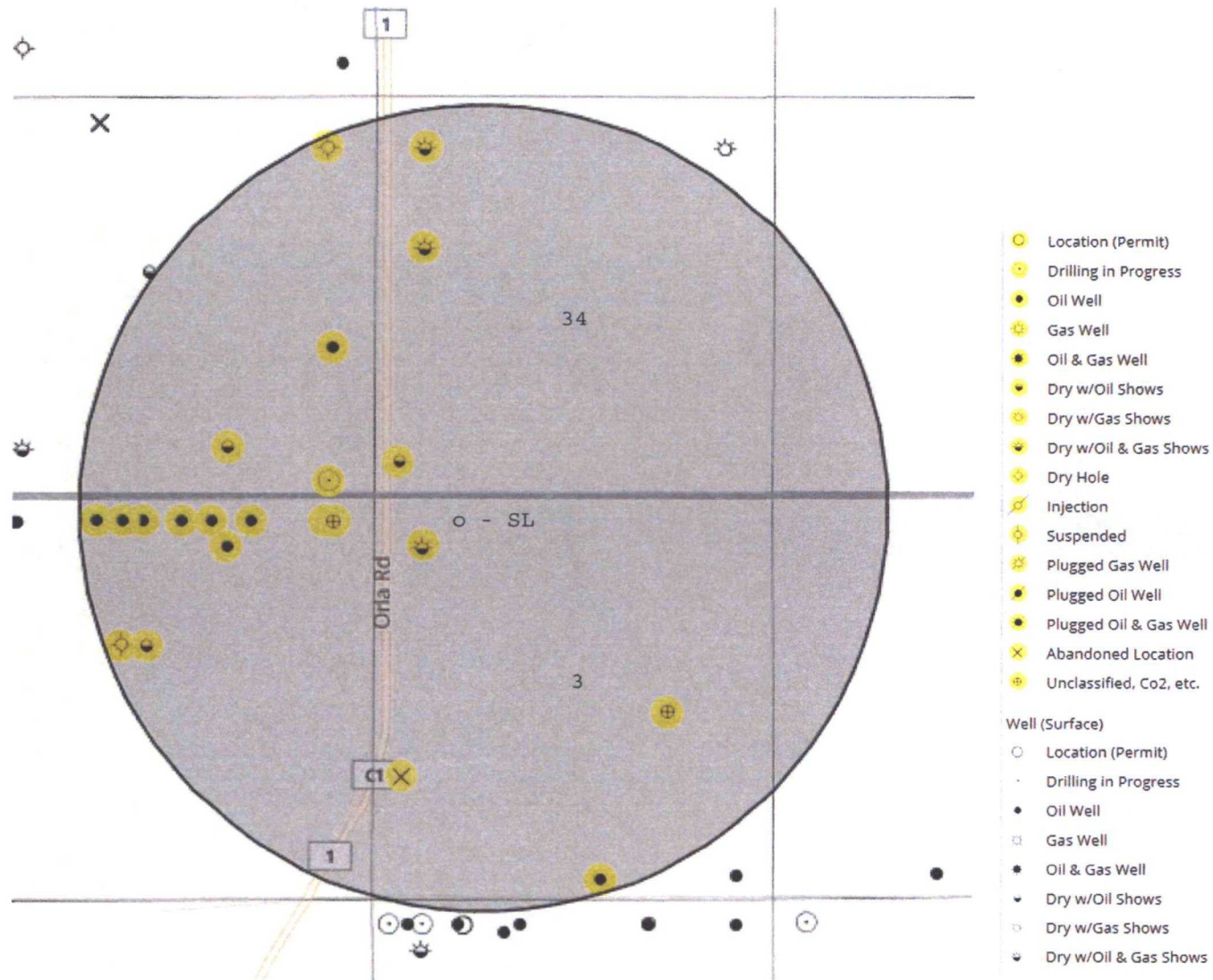


Exhibit "4A" - BHL - Jennings 34 A2MD Fed Com #1H

