

JUL 19 2016

District I  
1625 N. French Dr., Hobbs, NM 88240  
Phone: (575) 393-6161 Fax: (575) 393-0720  
District II  
811 S. First St., Artesia, NM 88210  
Phone: (575) 748-1283 Fax: (575) 748-9720  
District III  
1000 Rio Brazos Road, Aztec, NM 87410  
Phone: (505) 334-6178 Fax: (505) 334-6170  
District IV  
1220 S. St. Francis Dr., Santa Fe, NM 87505  
Phone: (505) 476-3460 Fax: (505) 476-3462

State of New Mexico  
Energy, Minerals & Natural Resources Department  
OIL CONSERVATION DIVISION  
1220 South St. Francis Dr.  
Santa Fe, NM 87505

Form C-102  
Revised August 1, 2011  
Submit one copy to appropriate  
District Office

☐ AMENDED REPORT

## WELL LOCATION AND ACREAGE DEDICATION PLAT

30-025- <sup>1</sup> API Number <b>43364</b>	<sup>2</sup> Pool Code <b>98065</b>	<sup>3</sup> Name <b>WC-025 G-08 5263205N; UPR WC</b>
<sup>4</sup> Property Code <b>713578</b>	<sup>5</sup> Property Name <b>WAR HAMMER 25 FEDERAL COM W2</b>	<sup>6</sup> Well Number <b>14H</b>
<b>217817</b>	<sup>8</sup> Operator Name <b>ConocoPhillips Company</b>	<sup>9</sup> Elevation <b>3135'</b>

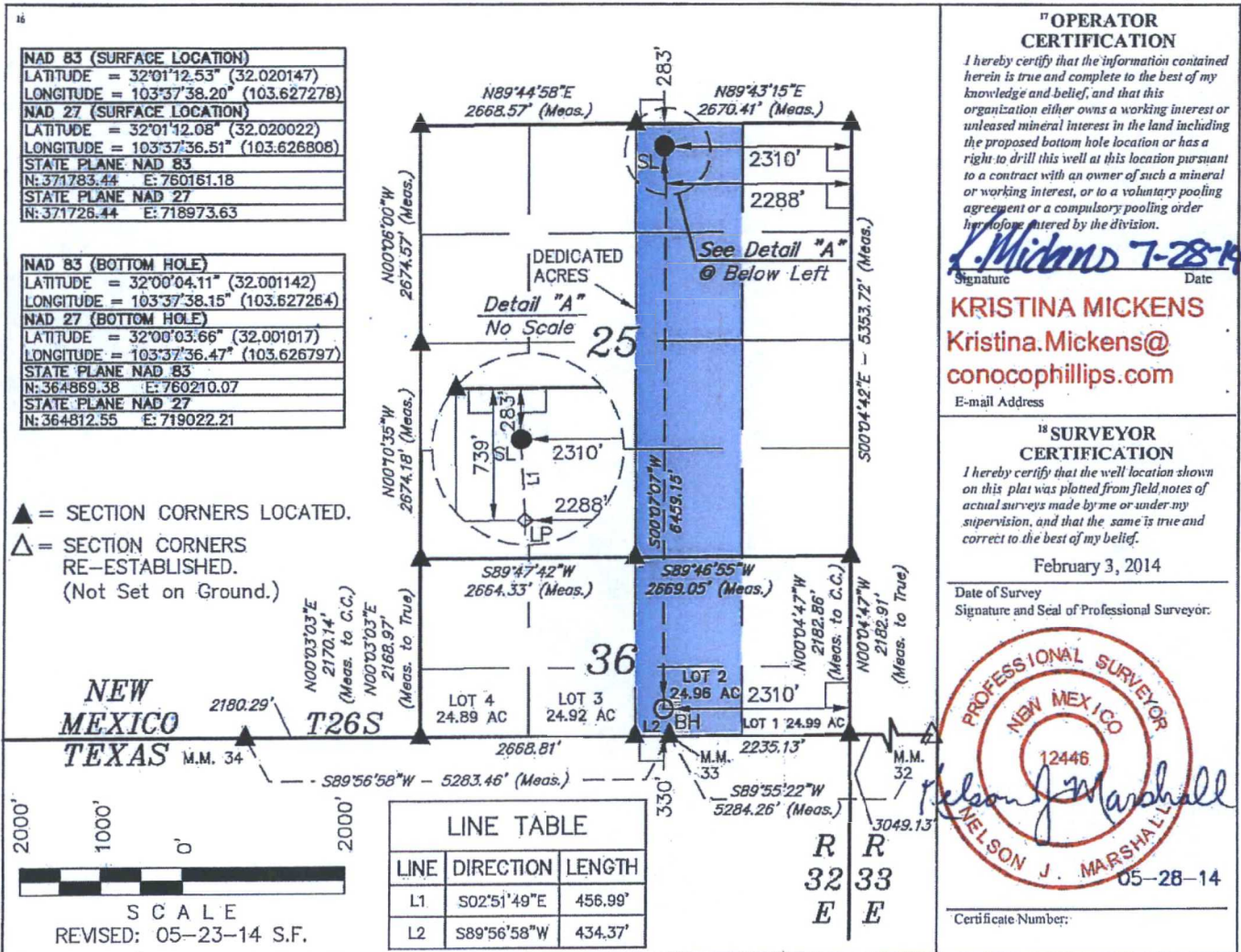
## " Surface Location

UL or lot no.	Section	Township	Range	Lot Idn	Feet from the	North/South line	Feet from the	East/West line	County
B	25	26 S	32 E		283	NORTH	2310	EAST	LEA

## " Bottom Hole Location If Different From Surface

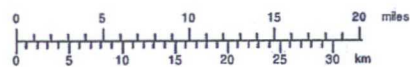
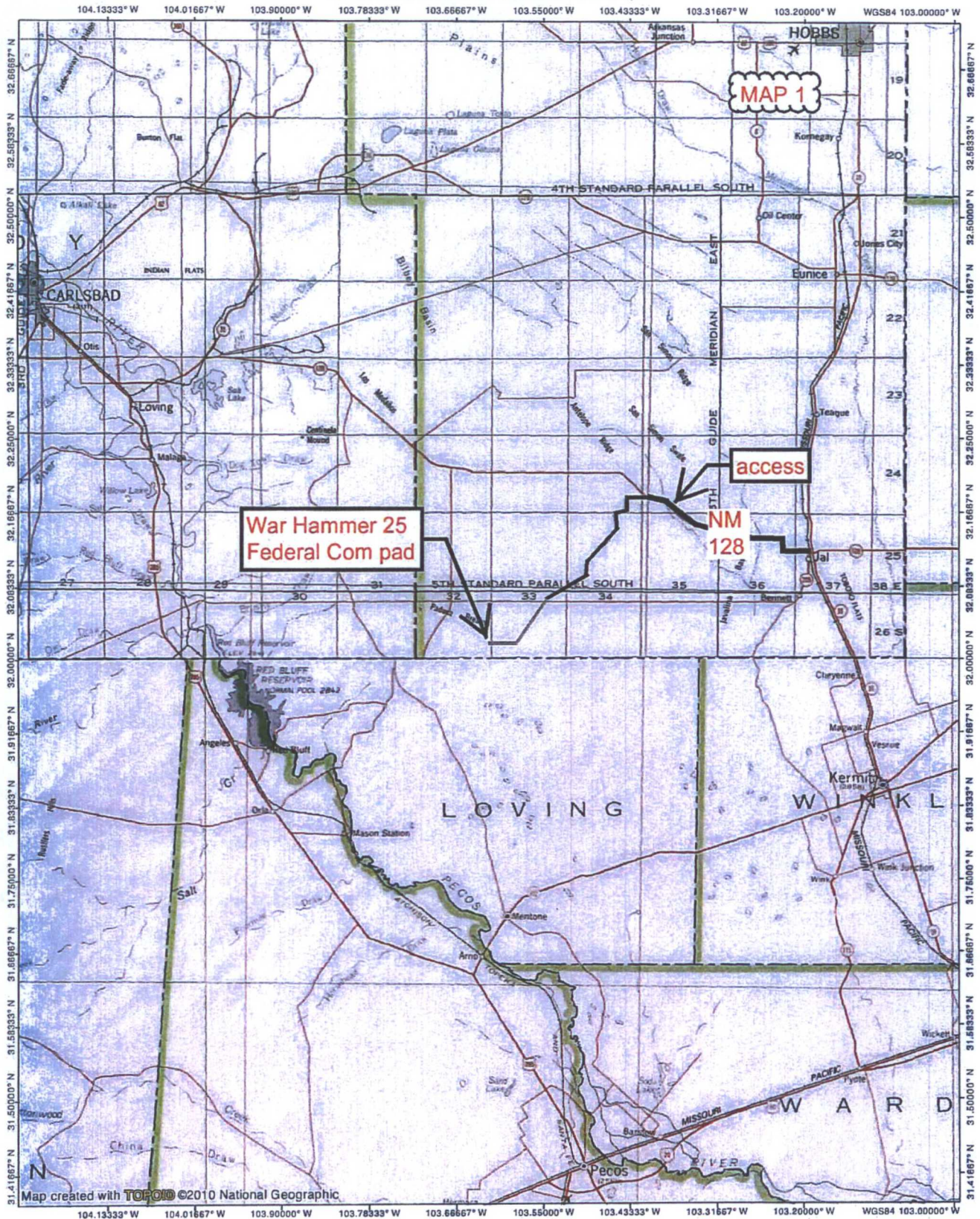
UL or lot no.	Section	Township	Range	Lot Idn	Feet from the	North/South line	Feet from the	East/West line	County
2	36	26 S	32 E		330	SOUTH	2310	EAST	LEA
<sup>12</sup> Dedicated Acres 224.96	<sup>13</sup> Joint or Infill	<sup>14</sup> Consolidation Code <b>C</b>	<sup>15</sup> Order No.						

No allowable will be assigned to this completion until all interests have been consolidated or a non-standard unit has been approved by the division.

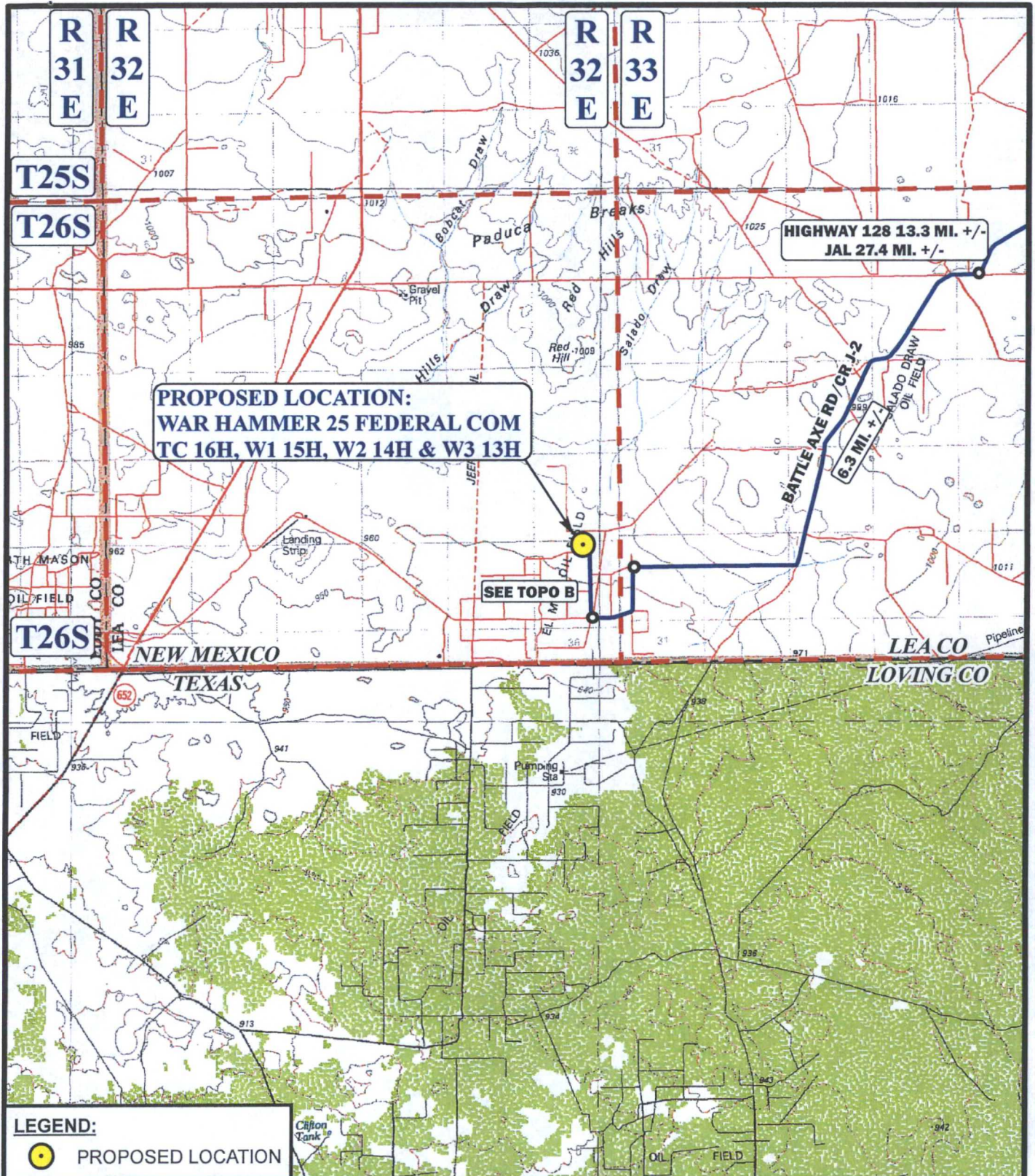





TOPO! map printed on 06/29/14 from "Untitled.tpo"









SCALE: 1:100,000		REVISION: 00-00-00	
DRAWN BY: L.S.			
DATE DRAWN: 01-08-14			





**ConocoPhillips Company**

**WAR HAMMER 25 FEDERAL COM**  
**TC 16H, W1 15H, W2 14H & W3 13H**  
**SECTION 25, T26S, R32E, N.M.P.M.**  
**NW 1/4 NE 1/4**

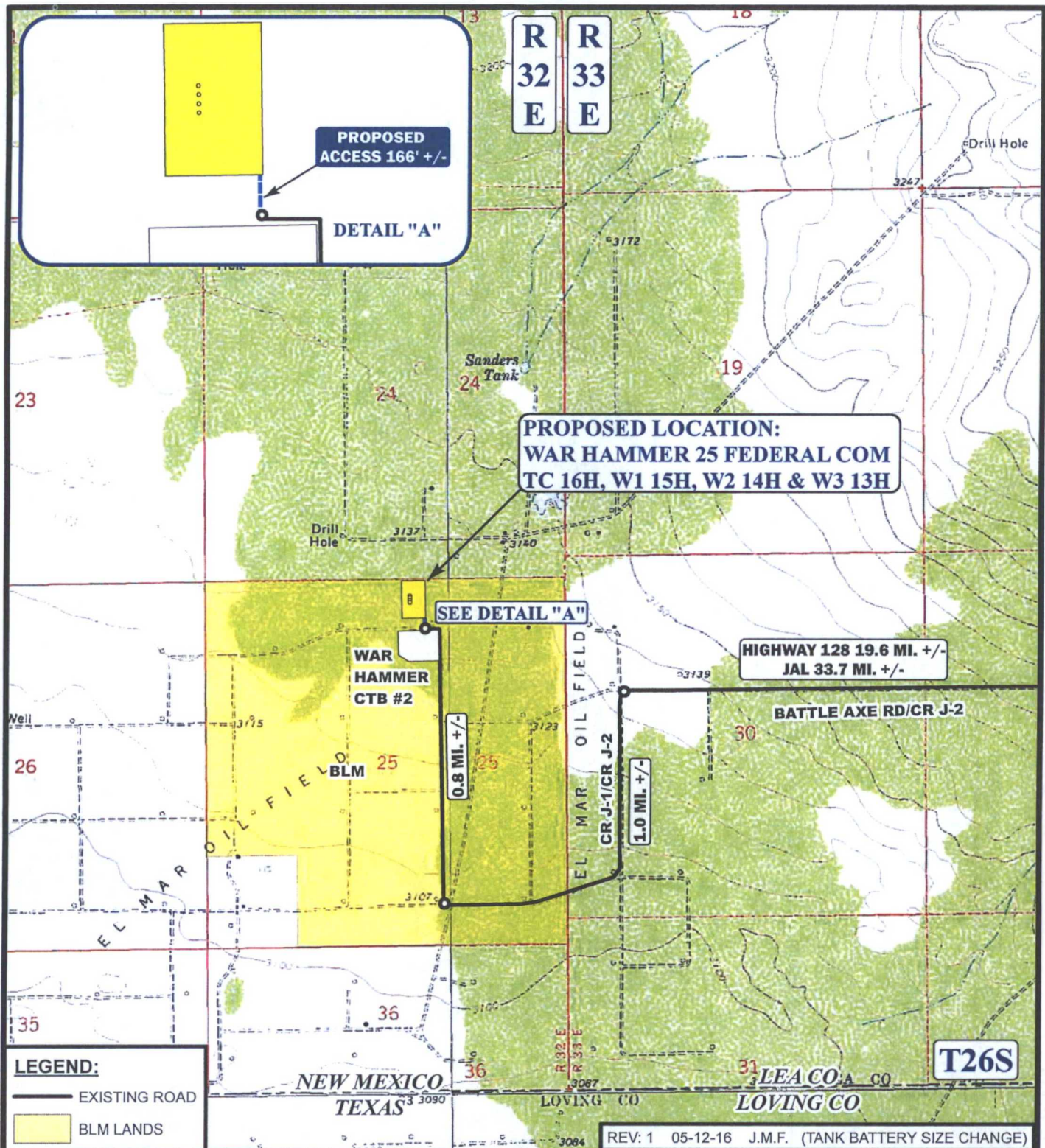


Corporate Office \* 85 South 200 East  
 Vernal, UT 84078 \* (435) 789-1017

**ACCESS ROAD MAP**

**TOPO A**





\*PARCEL DATA SHOWN HAS BEEN OBTAINED FROM VARIOUS SOURCES AND SHOULD BE USED FOR MAPPING, GRAPHIC AND PLANNING PURPOSES ONLY. NO WARRANTY IS MADE BY UTAH ENGINEERING & LAND SURVEYING (UELS) FOR ACCURACY OF THE PARCEL DATA.

SCALE: 1" = 2000'  
DRAWN BY: L.S.  
DATE DRAWN: 01-08-14



ConocoPhillips

ConocoPhillips Company

WAR HAMMER 25 FEDERAL COM  
TC 16H, W1 15H, W2 14H & W3 13H  
NW 1/4 NE 1/4, SECTION 25, T26S, R32E, N.M.P.M.  
LEA COUNTY, NEW MEXICO

**ACCESS ROAD MAP**

TOPO B



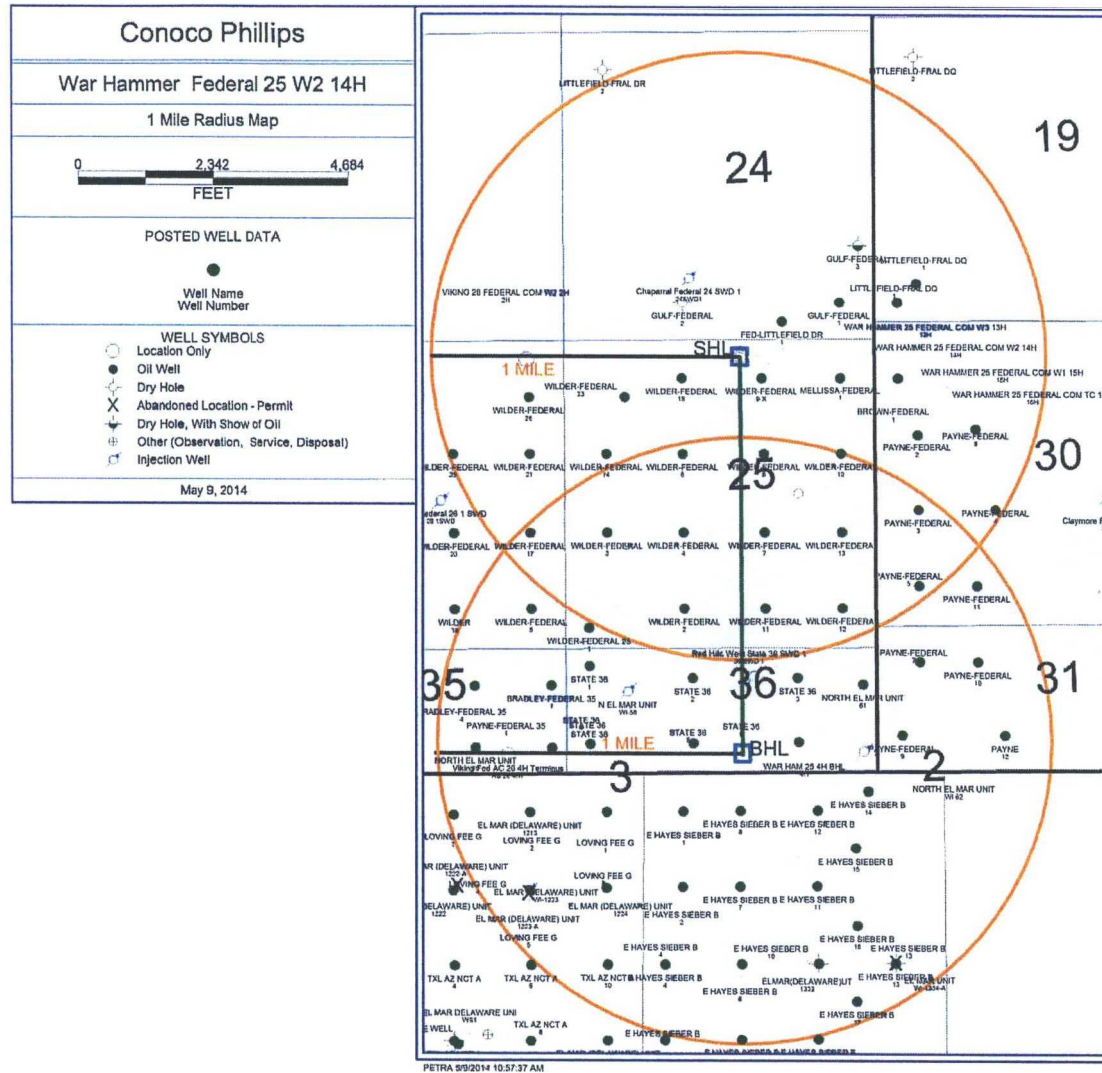
Corporate Office \* 85 South 200 East  
Vernal, UT 84078 \* (435) 789-1017



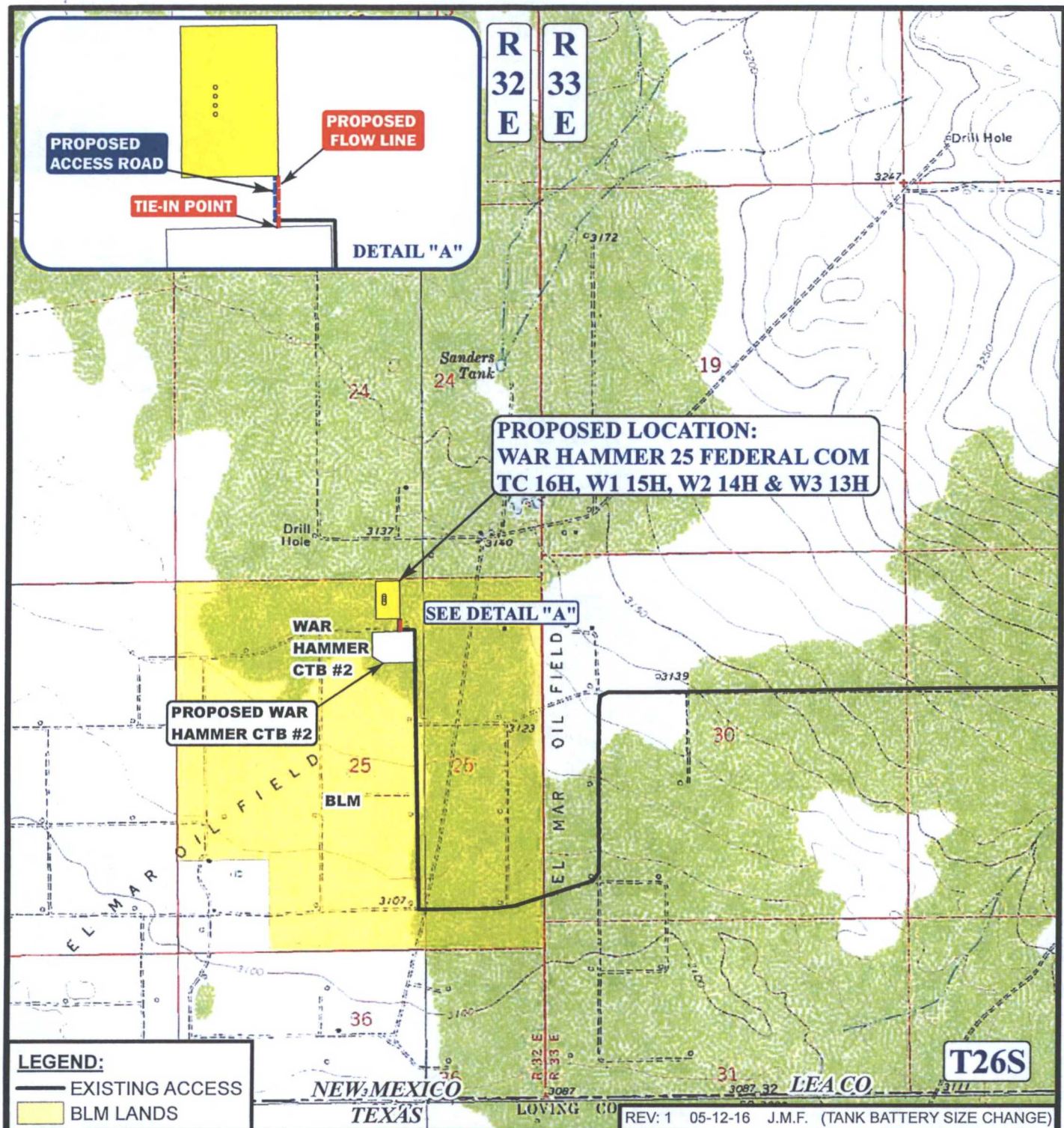




# MAP 5







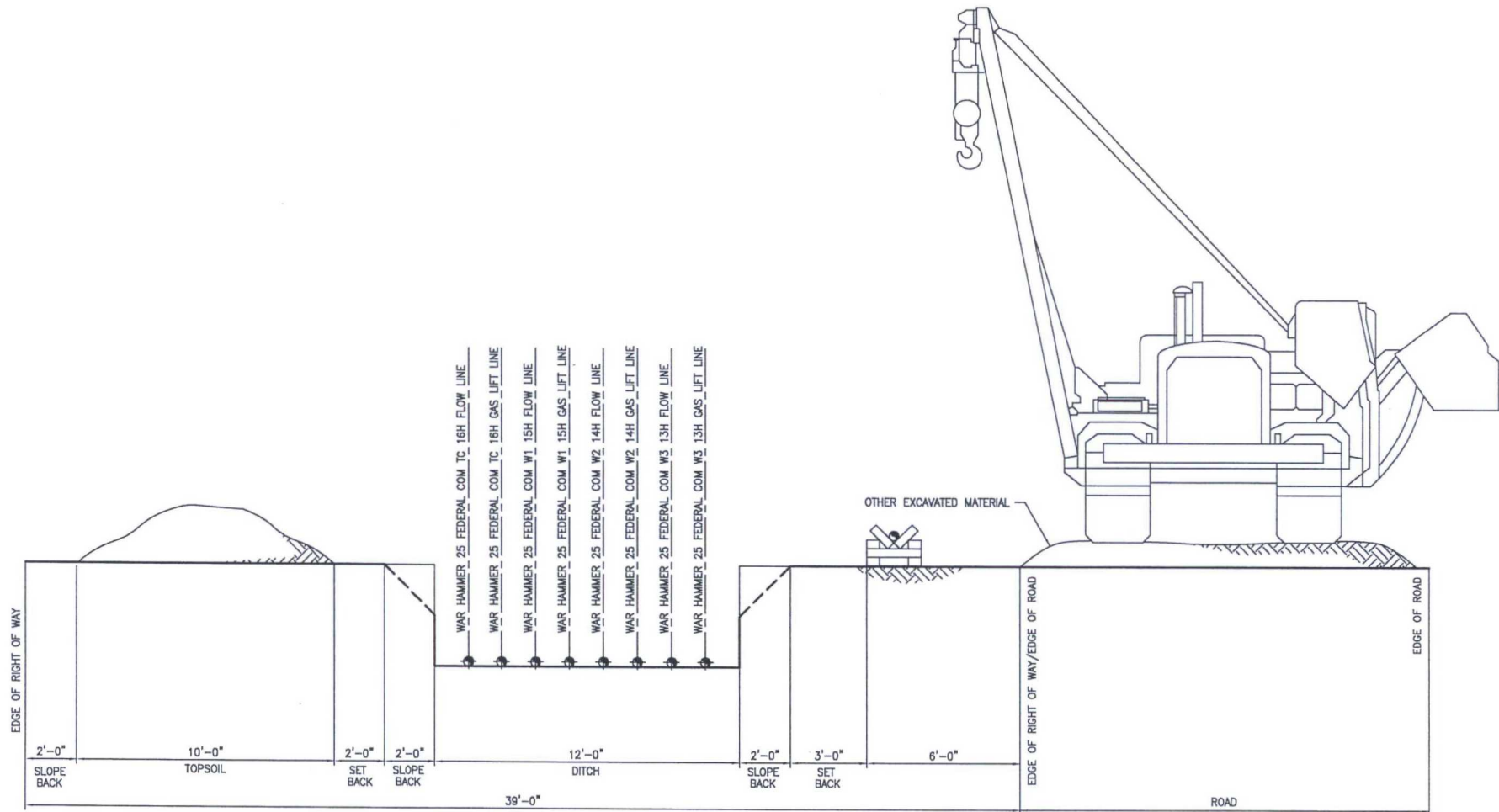






# FLOW LINE RIGHT OF WAY

WAR HAMMER 25 FEDERAL COM W3 13H, WAR HAMMER 25 FEDERAL COM W2 14H, WAR HAMMER 25 FEDERAL COM W1 15H, WAR HAMMER 25 FEDERAL COM TC 16H

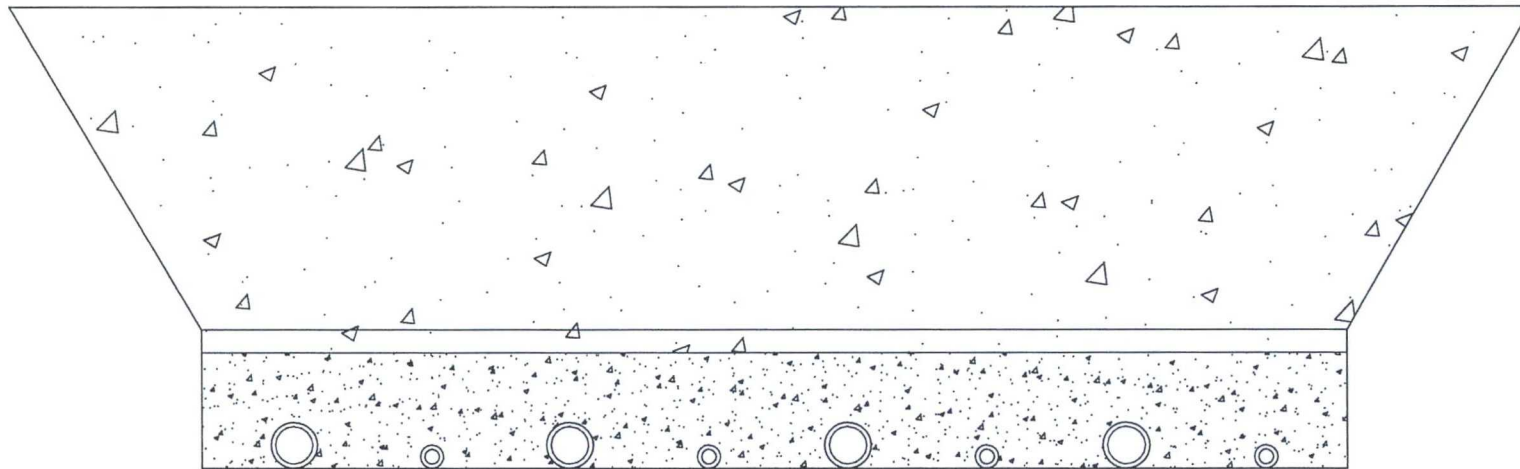


REFERENCE DWG NO:												DRAWN: TTM				DESIGN: RAR				<div>ConocoPhillips</div> <div>Mid Continent Business Unit</div>				PRMU FLOW LINE R-O-W WAR HAMMER 25 FEDERAL COM W3 13H, W2 14H, W1 15H, TC 16H															
												CHECKED: RAR				APPROVAL:												CC NO:											
A 05/13/14				ISSUE FOR APPROVAL								TTM RAR				SCALE: NA				DATE: 05/13/14				CADD FILENAME:				JOB NO: -		SUB JOB NO: -		DRAWING NO: WAR HAMMER COM W3 13H_W2 14H_W1 15H_TC 16H				SHEET: 1 OF 1		REV: A	
REV DATE				REVISION								BY CHK APP APP																											



## **BACKFILL AROUND PIPE**

**WAR HAMMER 25 FEDERAL COM W3 13H, WAR HAMMER 25 FEDERAL COM  
W2 14H, WAR HAMMER 25 FEDERAL COM W1 15H, WAR HAMMER 25  
FEDERAL COM TC 16H**



BACKFILL DIRT TO BE AS FREE OF ROCKS AND LARGE PARTICLES AS POSSIBLE

FLOW LINE WILL BE 4" COATED STEEL PIPE w/ AN OPERATING PRESSURE UP TO 1480# PSI.

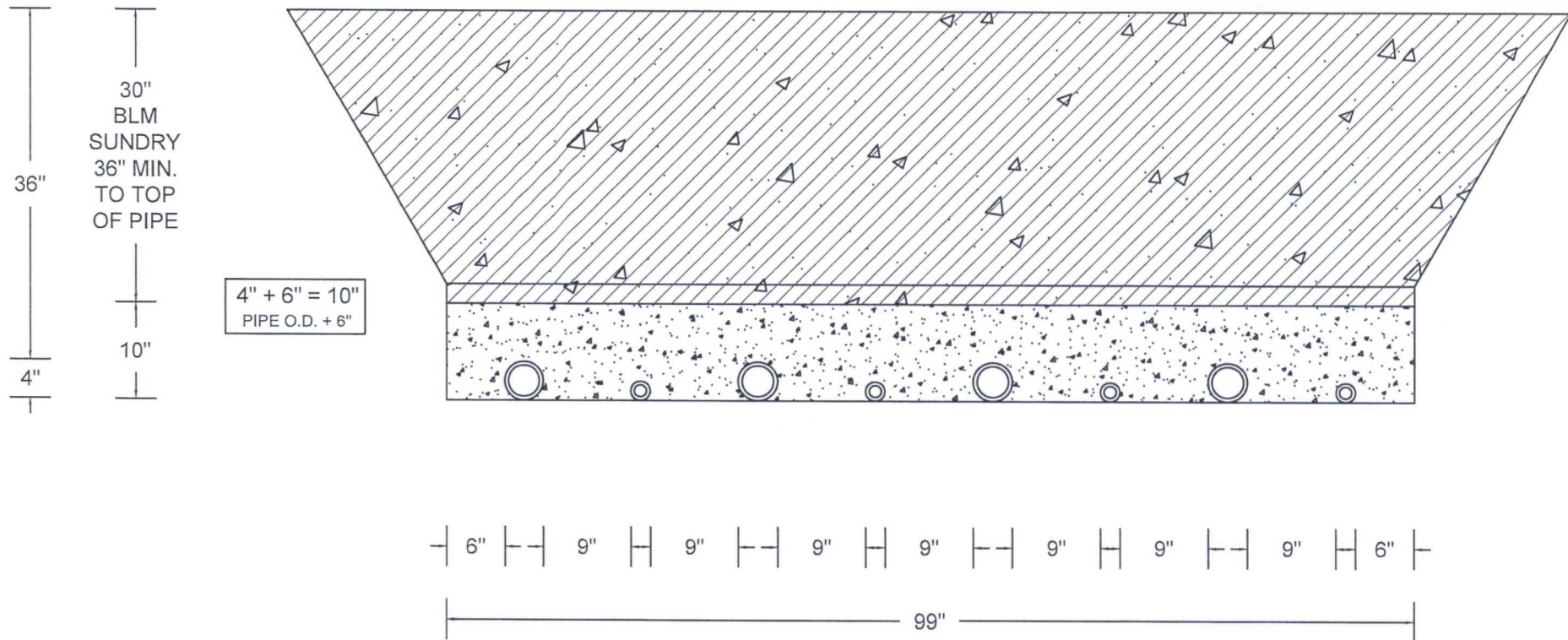
GAS SUPPLY LINE WILL BE 2" STEEL PIPE w/ AN OPERATING PRESSURE UP TO 1100# PSI.

SOFT FILL DIRT OR SAND WITH NO ROCKS OR SOLID PARTICLES GREATER THAN 1" IN CIRCUMFERENCE



# BACKFILL AROUND PIPE

WAR HAMMER 25 FEDERAL COM W3 13H, WAR HAMMER 25 FEDERAL COM W2 14H, WAR HAMMER 25 FEDERAL COM W1 15H, WAR HAMMER 25 FEDERAL COM TC 16H



ALTERNATING 4" PIPE (FLOW LINE) +  
2" PIPE (GAS LIFT)

6" CLEARANCE AT BOTH ENDS

9" CLEARANCE BETWEEN EACH PIPE















MAP 10

War Hammer 25 Federal Com  
TC 12H, W1 11H, W2 10H, & W3 9H

Central Tank  
Battery 2

587.44' proposed road  
590.57' proposed power line  
595.08' proposed pipelines

proposed  
power line  
1,106.67'

32.02088, -103.62556 32.02088, -103.62445

32.01939, -103.62445  
32.01919, -103.62445

32.01904, -103.62444  
32.01895, -103.62452

32.01886, -103.62742

32.01886, -103.62595

32.01763, -103.62594

32.01566, -103.62598

32.01521, -103.62546 32.0152, -103.62546  
32.01522, -103.62573

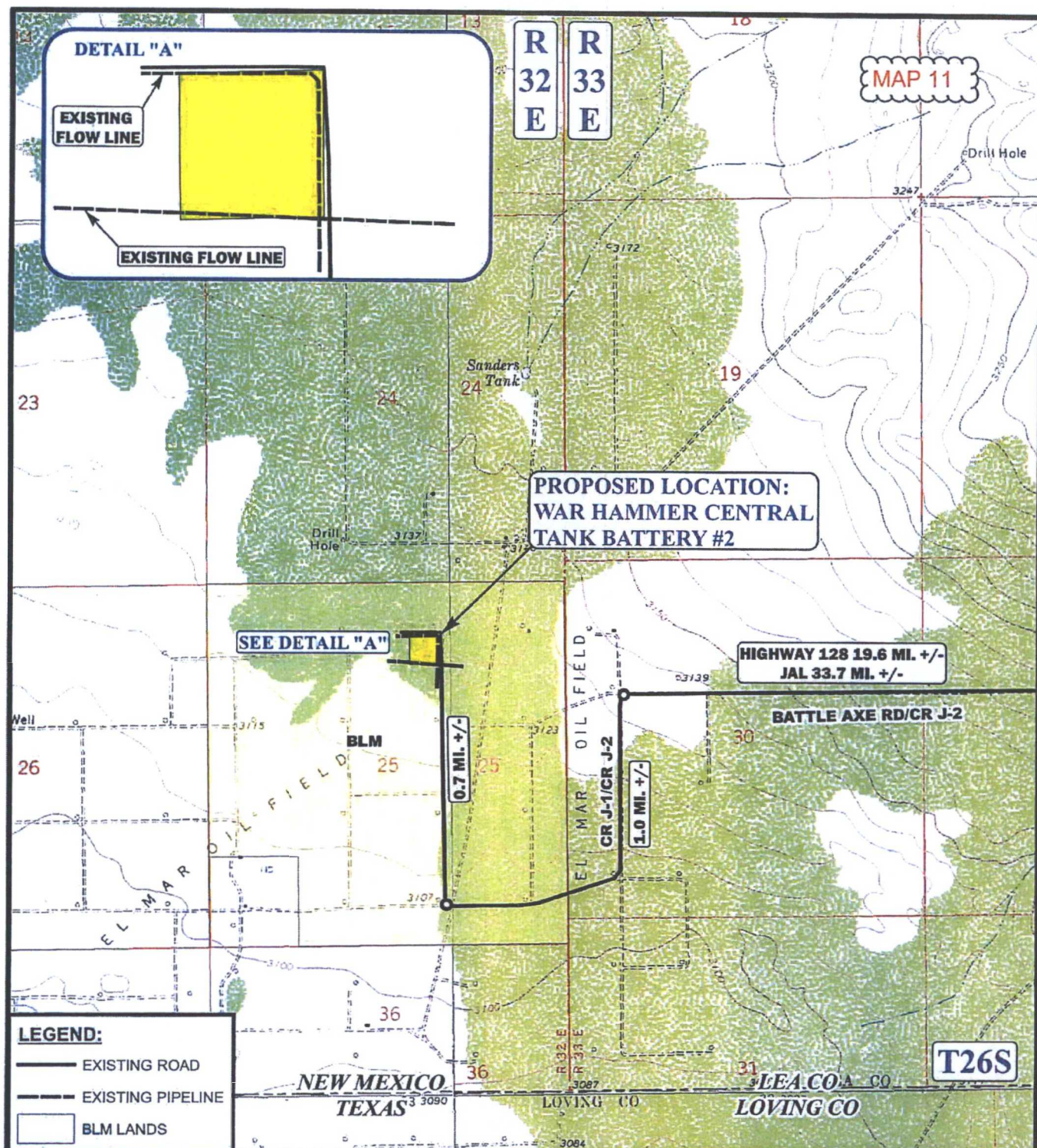
Survey

692 ft

Google earth

Imagery Date: 4/7/2013 lat 32.018041° lon -103.625605° elev 3136 ft eye alt 6118 ft





\*PARCEL DATA SHOWN HAS BEEN OBTAINED FROM VARIOUS SOURCES AND SHOULD BE USED FOR MAPPING, GRAPHIC AND PLANNING PURPOSES ONLY. NO WARRANTY IS MADE BY UINTAH ENGINEERING & LAND SURVEYING (UELS) FOR ACCURACY OF THE PARCEL DATA.

SCALE: 1" = 2000'

REVISION: 00-00-00

DRAWN BY: L.S.

DATE DRAWN: 02-24-14



Corporate Office \* 85 South 200 East  
Vernal, UT 84078 \* (435) 789-1017



ConocoPhillips

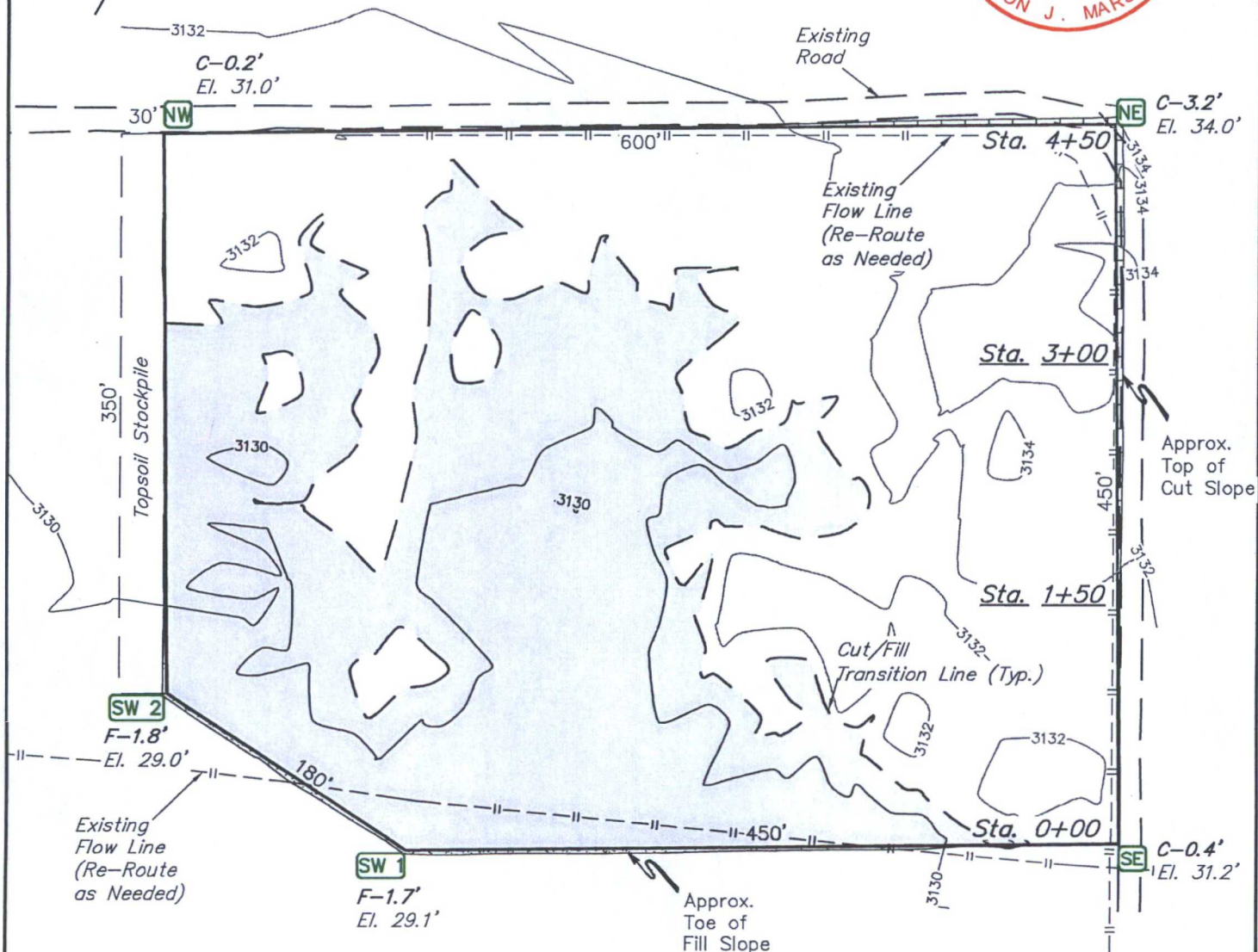
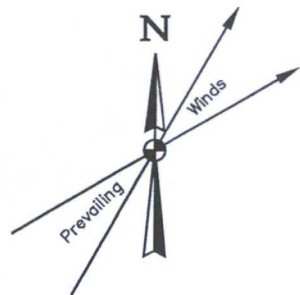
ConocoPhillips Company

WAR HAMMER CENTRAL TANK BATTERY #2  
SECTION 25, T26S, R32E, N.M.P.M.  
NW 1/4 NE 1/4

ACCESS ROAD MAP

TOPO B





FINISHED GRADE ELEVATION = 3130.8'

**NOTES:**

- Contours shown at 2' intervals.
- Underground utilities shown on this sheet are for visualization purposes only, actual locations to be determined prior to construction.

**ConocoPhillips Company**

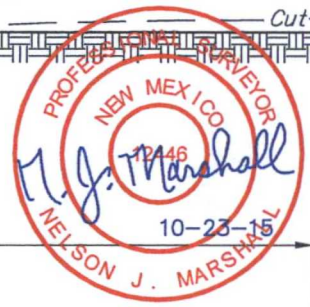
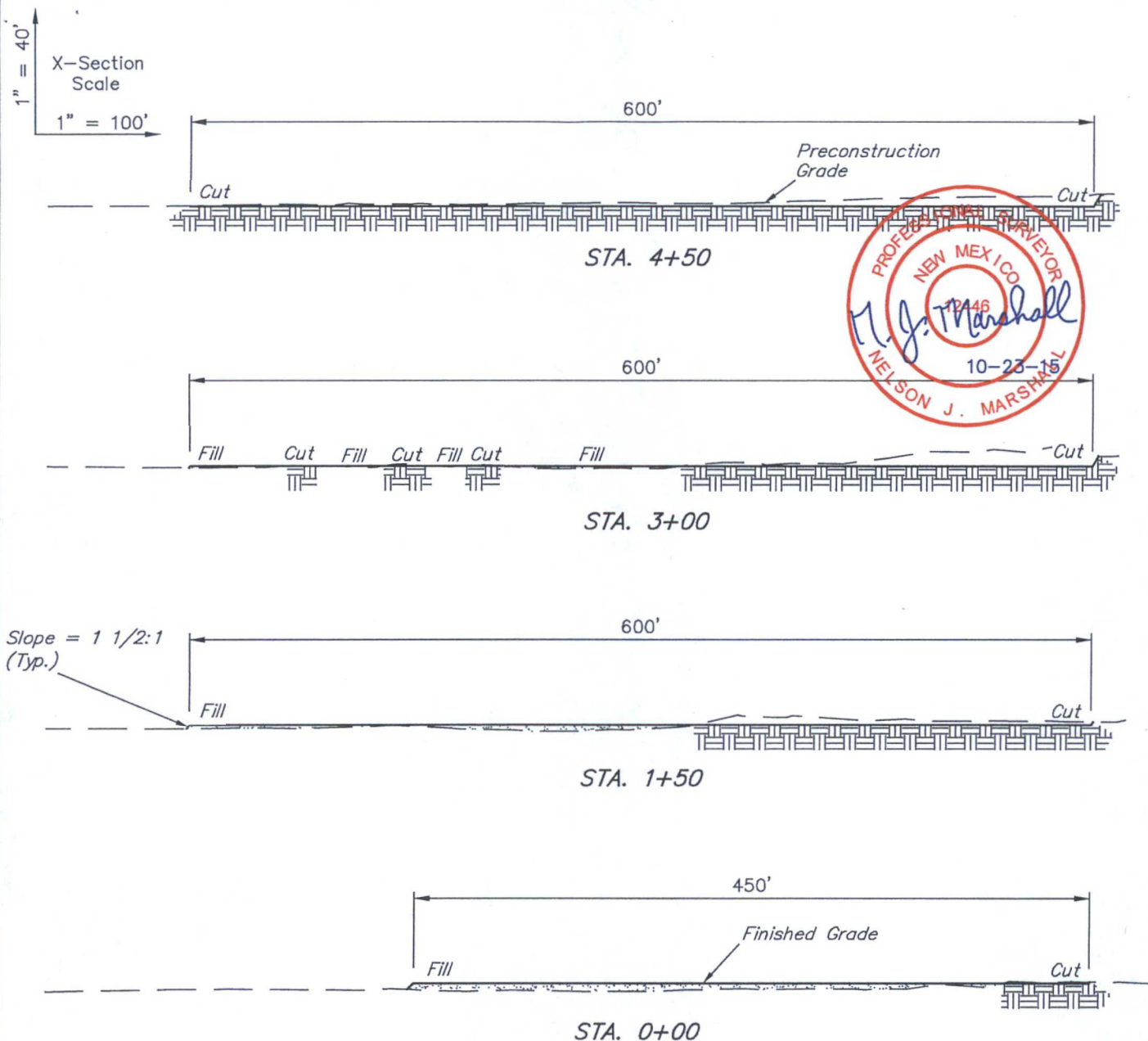
**WAR HAMMER CENTRAL TANK BATTERY #2  
NW 1/4 NE 1/4, SECTION 25, T26S, R32E, N.M.P.M.  
LEA COUNTY, NEW MEXICO**



**UELS, LLC**  
Corporate Office \* 85 South 200 East  
Vernal, UT 84078 \* (435) 789-1017

DRAWN BY: C.A.G.	DATE DRAWN: 02-20-14
SCALE: 1" = 100'	REVISED: 10-16-15 C.D.
<b>LOCATION LAYOUT</b>	
<b>FIGURE #1</b>	





APPROXIMATE EARTHWORK QUANTITIES	
(3") TOPSOIL STRIPPING	2,470 Cu. Yds.
REMAINING LOCATION	5,420 Cu. Yds.
<b>TOTAL CUT</b>	<b>7,890 Cu. Yds.</b>
<b>FILL</b>	<b>5,420 Cu. Yds.</b>
EXCESS MATERIAL	2,470 Cu. Yds.
TOPSOIL	2,470 Cu. Yds.
<b>EXCESS UNBALANCE</b> (After Interim Rehabilitation)	<b>0 Cu. Yds.</b>

APPROXIMATE SURFACE DISTURBANCE AREAS		
	DISTANCE	ACRES
WELL SITE DISTURBANCE	NA	±6.343
30' WIDE PIPELINE R-O-W DISTURBANCE	±1118.27'	±0.770
30' WIDE POWER LINE R-O-W DISTURBANCE	±1106.67'	±0.762
<b>TOTAL SURFACE USE AREA</b>		<b>±7.875</b>

#### NOTES:

- Fill quantity includes 5% for compaction.

#### ConocoPhillips Company

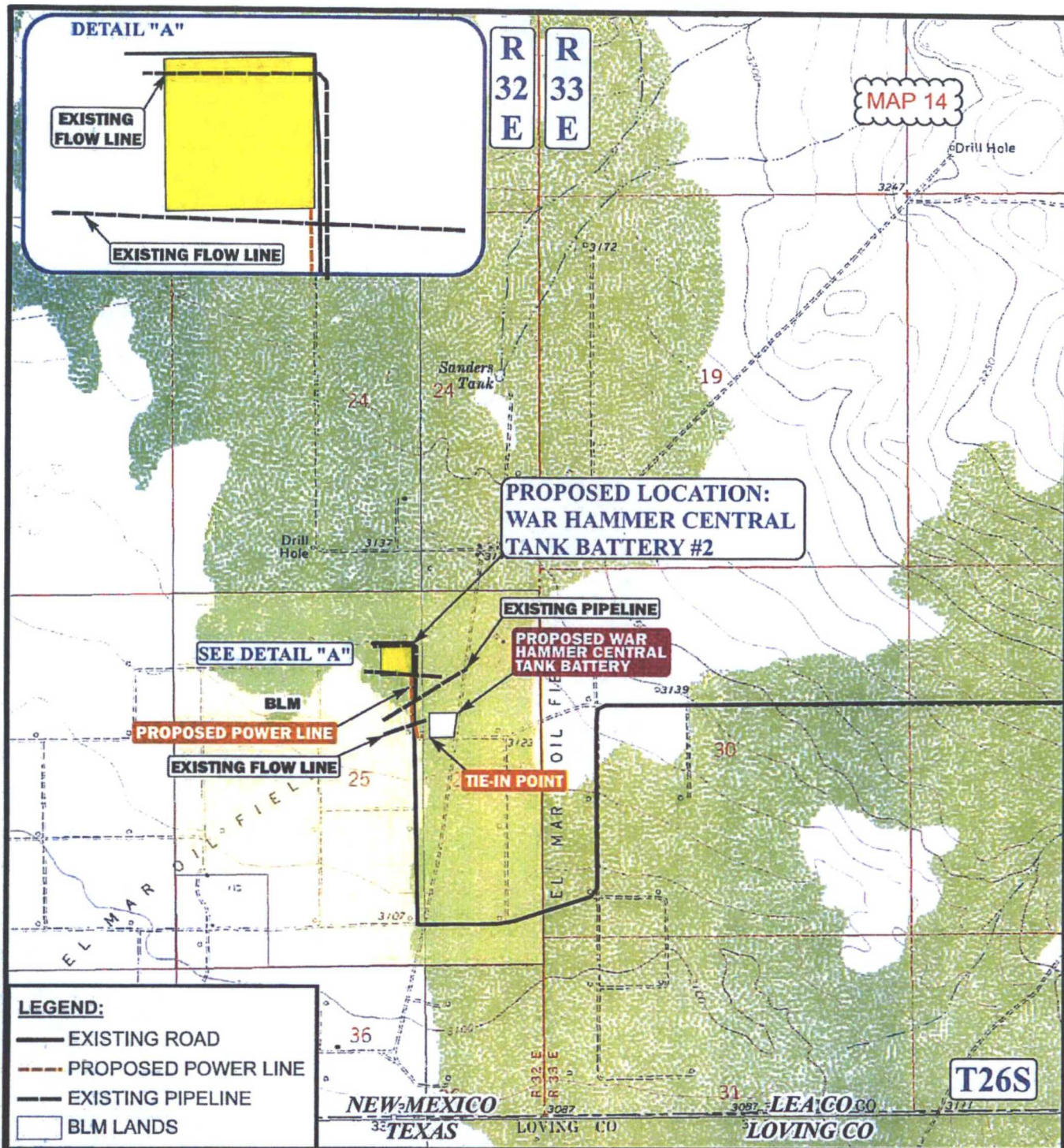
WAR HAMMER CENTRAL TANK BATTERY #2  
NW 1/4 NE 1/4, SECTION 25, T26S, R32E, N.M.P.M.  
LEA COUNTY, NEW MEXICO



UELS, LLC  
Corporate Office \* 85 South 200 East  
Vernal, UT 84078 \* (435) 789-1017

DRAWN BY: C.A.G.	DATE DRAWN: 02-20-14
SCALE: AS SHOWN	REVISED: 10-16-15 C.D.
<b>TYPICAL CROSS SECTIONS</b>	<b>FIGURE #2</b>





**APPROXIMATE TOTAL POWER LINE DISTANCE = 1,107' +/-**

\*PARCEL DATA SHOWN HAS BEEN OBTAINED FROM VARIOUS SOURCES AND SHOULD BE USED FOR MAPPING, GRAPHIC AND PLANNING PURPOSES ONLY. NO WARRANTY IS MADE BY UINTAH ENGINEERING & LAND SURVEYING (UELS) FOR ACCURACY OF THE PARCEL DATA.

SCALE: 1" = 2000'

DRAWN BY: L.S.

DATE DRAWN: 02-24-14

REVISED: 00-00-00



ConocoPhillips

**ConocoPhillips Company**

WAR HAMMER CENTRAL TANK BATTERY #2  
SECTION 25, T26S, R32E, N.M.P.M.  
NW 1/4 NE 1/4

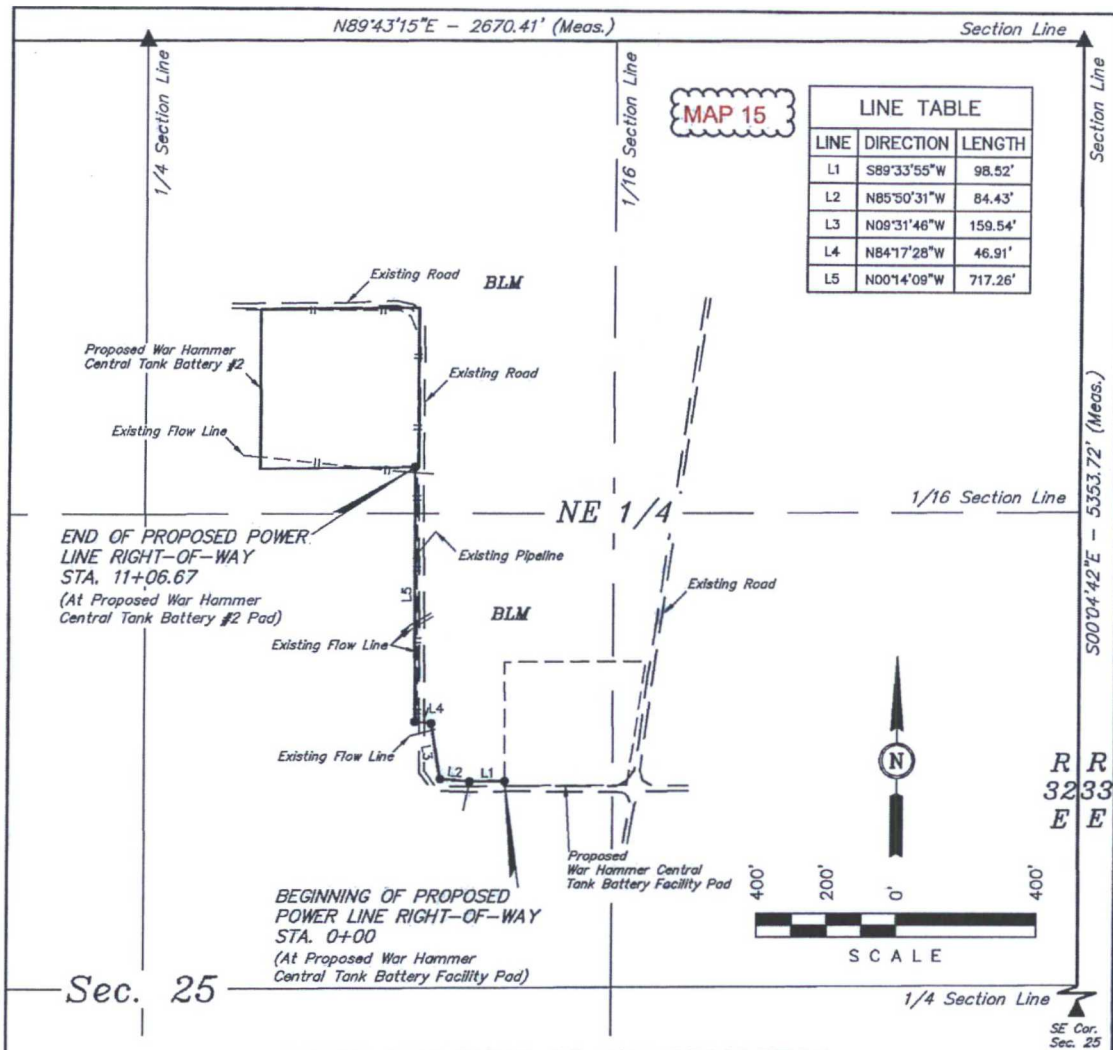
**POWER LINE MAP**

TOPO E



Corporate Office \* 85 South 200 East  
Vernal, UT 84078 \* (435) 789-1017





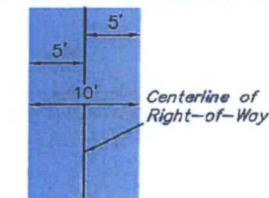
### POWER LINE RIGHT-OF-WAY DESCRIPTION

A 10' WIDE RIGHT-OF-WAY 5' ON EACH SIDE OF THE FOLLOWING DESCRIBED CENTERLINE.

BEGINNING AT A POINT IN THE SW 1/4 NE 1/4 OF SECTION 25, T26S, R32E, N.M.P.M., WHICH BEARS S26°16'00"E 2325.98' FROM THE NORTH 1/4 CORNER OF SAID SECTION 25, THENCE S89°33'55"W 98.52'; THENCE N85°50'31"W 84.43'; THENCE N09°31'46"W 159.54'; THENCE N84°17'28"W 46.91'; THENCE N00°14'09"W 717.26' TO A POINT IN THE NW 1/4 NE 1/4 OF SAID SECTION 25, WHICH BEARS S32°40'53"E 1427.10' FROM THE NORTH 1/4 CORNER OF SAID SECTION 25. THE SIDE LINES OF SAID DESCRIBED RIGHT-OF-WAY BEING SHORTENED OR ELONGATED TO MEET THE GRANTOR'S PROPERTY LINES. BASIS OF BEARINGS IS A G.P.S. OBSERVATION. CONTAINS 0.254 ACRES MORE OR LESS.

BEGINNING OF POWER LINE STA. 0+00 BEARS S26°16'00"E 2325.98' FROM THE NORTH 1/4 CORNER OF SECTION 25, T26S, R32E, N.M.P.M.

END OF POWER LINE STA. 11+06.67 BEARS S32°40'53"E 1427.10' FROM THE NORTH 1/4 CORNER OF SECTION 25, T26S, R32E, N.M.P.M.



TYPICAL RIGHT-OF-WAY DETAIL  
No Scale

#### RIGHT-OF-WAY LENGTHS

DESCRIPTION	FEET	ACRES	RODS
BLM NE 1/4	1106.67	0.254	67.07

▲ = SECTION CORNERS LOCATED.

#### CERTIFICATE OF PROFESSIONAL SURVEY

THIS IS TO CERTIFY THAT THE ABOVE WAS PREPARED FROM FIELD NOTES OF ACTUAL SURVEY MADE BY ME OR UNDER MY SUPERVISION AND THAT THE SAME ARE TRUE AND CORRECT TO THE BEST OF MY KNOWLEDGE AND BELIEF.

*Robert J. Marshall*  
REGISTERED LAND SURVEYOR  
REGISTRATION NO. 12446  
STATE OF NEW MEXICO

03-04-14

#### NOTES:

ConocoPhillips

ConocoPhillips Company

WAR HAMMER CENTRAL TANK BATTERY #2  
SECTION 25, T26S, R32E, N.M.P.M.  
NW 1/4 NE 1/4

DRAWN BY: C.A.G.

SCALE: 1" = 400'

DATE: 02-20-14

REVISED:

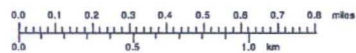
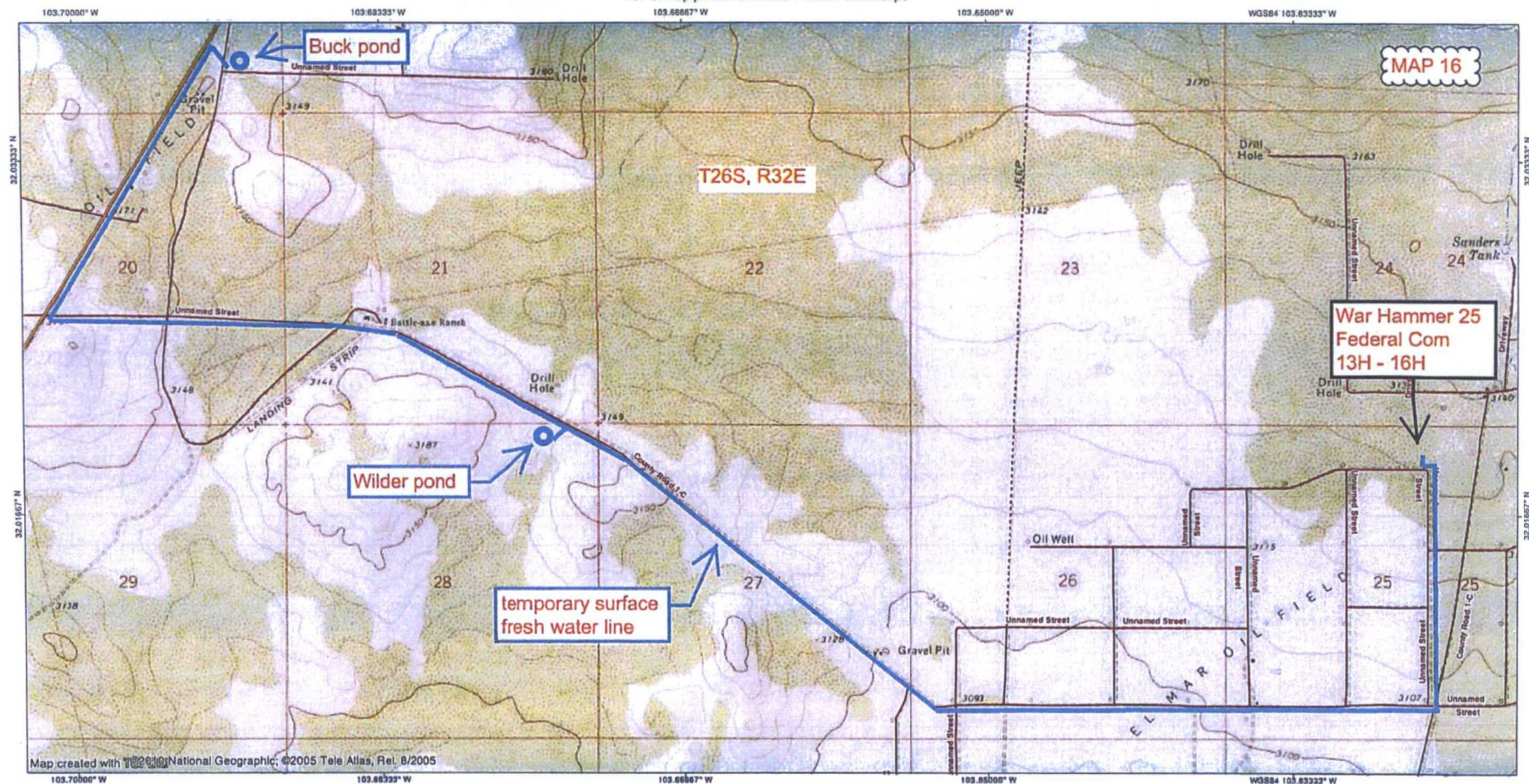


Corporate Office \* 85 South 200 East  
Vernal, UT 84078 \* (435) 789-1017

POWER LINE R-O-W



TOPOI map printed on 06/30/14 from "Untitled.tpo"

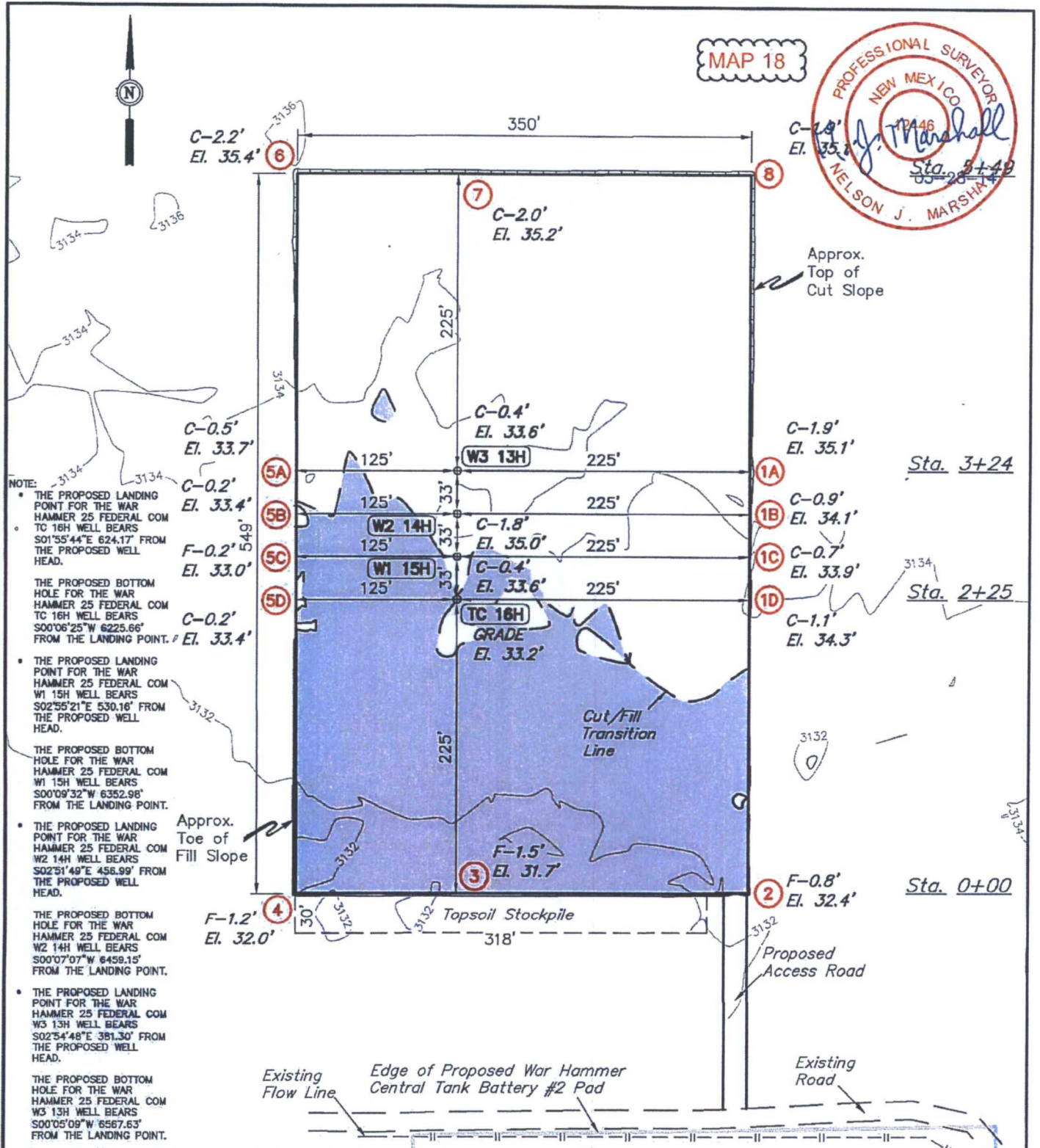


TN MN  
7.5°  
06/30/14









ELEV. UNGRADED GROUND AT TC 16H LOC. STAKE = 3133.2' FINISHED GRADE ELEV. AT TC 16H LOC. STAKE = 3133.2'

**NOTES:**

- Flare pit is to be located a min. of 100' from the well head.
- Underground utilities shown on this sheet are for visualization purposes only, actual locations to be determined prior to construction.

ConocoPhillips

**ConocoPhillips Company**

WAR HAMMER 25 FEDERAL COM  
TC 16H, W1 15H, W2 14H & W3 13H  
SECTION 25, T26S, R32E, N.M.P.M.  
NW 1/4 NE 1/4

DRAWN BY: C.A.G.

SCALE: 1" = 100'

DATE: 02-16-14

REVISED: 05-23-14 S.F.

**LOCATION LAYOUT**

**FIGURE #1**

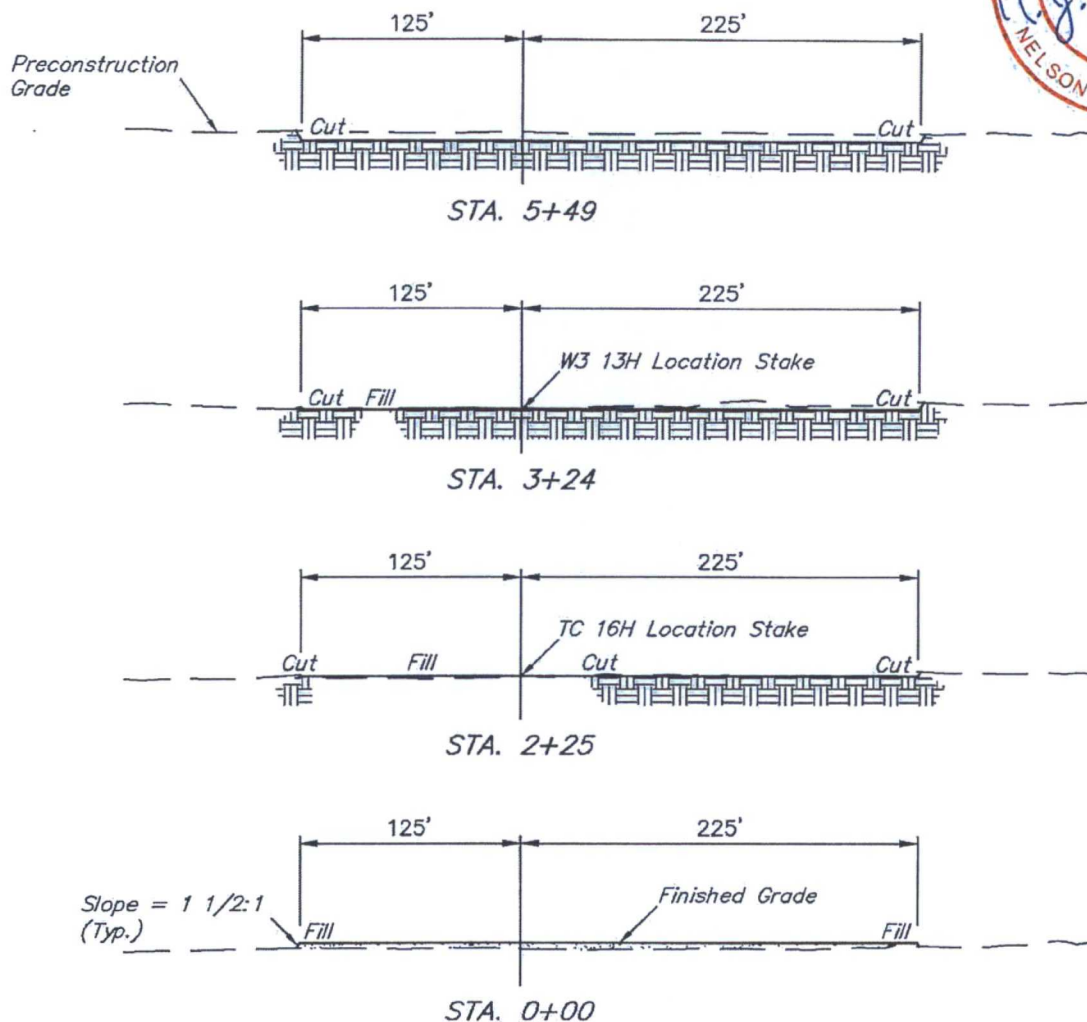


Corporate Office \* 85 South 200 East  
Vernal, UT 84078 \* (435) 789-1017



1" = 40'  
X-Section  
Scale  
1" = 100'

MAP 19



APPROXIMATE EARTHWORK QUANTITIES		APPROXIMATE SURFACE DISTURBANCE AREAS		
(3") TOPSOIL STRIPPING	1,810 Cu. Yds.		DISTANCE	ACRES
REMAINING LOCATION	3,490 Cu. Yds.	WELL SITE DISTURBANCE	NA	±4.486
<b>TOTAL CUT</b>	<b>5,300 Cu. Yds.</b>	ACCESS ROAD DISTURBANCE	±166.02'	±0.076
<b>FILL</b>	<b>3,490 Cu. Yds.</b>	FLOW LINE DISTURBANCE	±182.18'	±0.042
EXCESS MATERIAL	1,810 Cu. Yds.	POWER LINE DISTURBANCE	±182.54'	±0.042
TOPSOIL	1,810 Cu. Yds.	<b>TOTAL DISTURBANCE</b>	<b>±530.74'</b>	<b>±4.646</b>
<b>EXCESS UNBALANCE</b> (After Interim Rehabilitation)	<b>0 Cu. Yds.</b>			

**NOTES:**

- Fill quantity includes 5% for compaction.
- Topsoil should not be stripped below finished grade on substructure area.

ConocoPhillips

**ConocoPhillips Company**

WAR HAMMER 25 FEDERAL COM  
TC 16H, W1 15H, W2 14H & W3 13H  
SECTION 25, T26S, R32E, N.M.P.M.  
NW 1/4 NE 1/4

DRAWN BY: C.A.G.

SCALE: AS SHOWN

DATE: 02-16-14

REVISED:



Corporate Office \* 85 South 200 East  
Vernal, UT 84078 \* (435) 789-1017

**TYPICAL CROSS SECTIONS**

**FIGURE #2**





MAP 20



- W3 13H
- W2 14H
- W1 15H
- TC 16H

Topsoil Stockpile

700' X 600'  
Archaeological Survey  
Boundary

Proposed  
Access Road

Existing  
Flow Line

Edge of Proposed War Hammer  
Central Tank Battery #2 Pad

Existing  
Road

NOTES:

ConocoPhillips

ConocoPhillips Company

WAR HAMMER 25 FEDERAL COM  
TC 16H, W1 15H, W2 14H & W3 13H  
SECTION 25, T26S, R32E, N.M.P.M.  
NW 1/4 NE 1/4



Corporate Office \* 85 South 200 East  
Vernal, UT 84078 \* (435) 789-1017

DRAWN BY: C.A.G.

SCALE: 1" = 100'

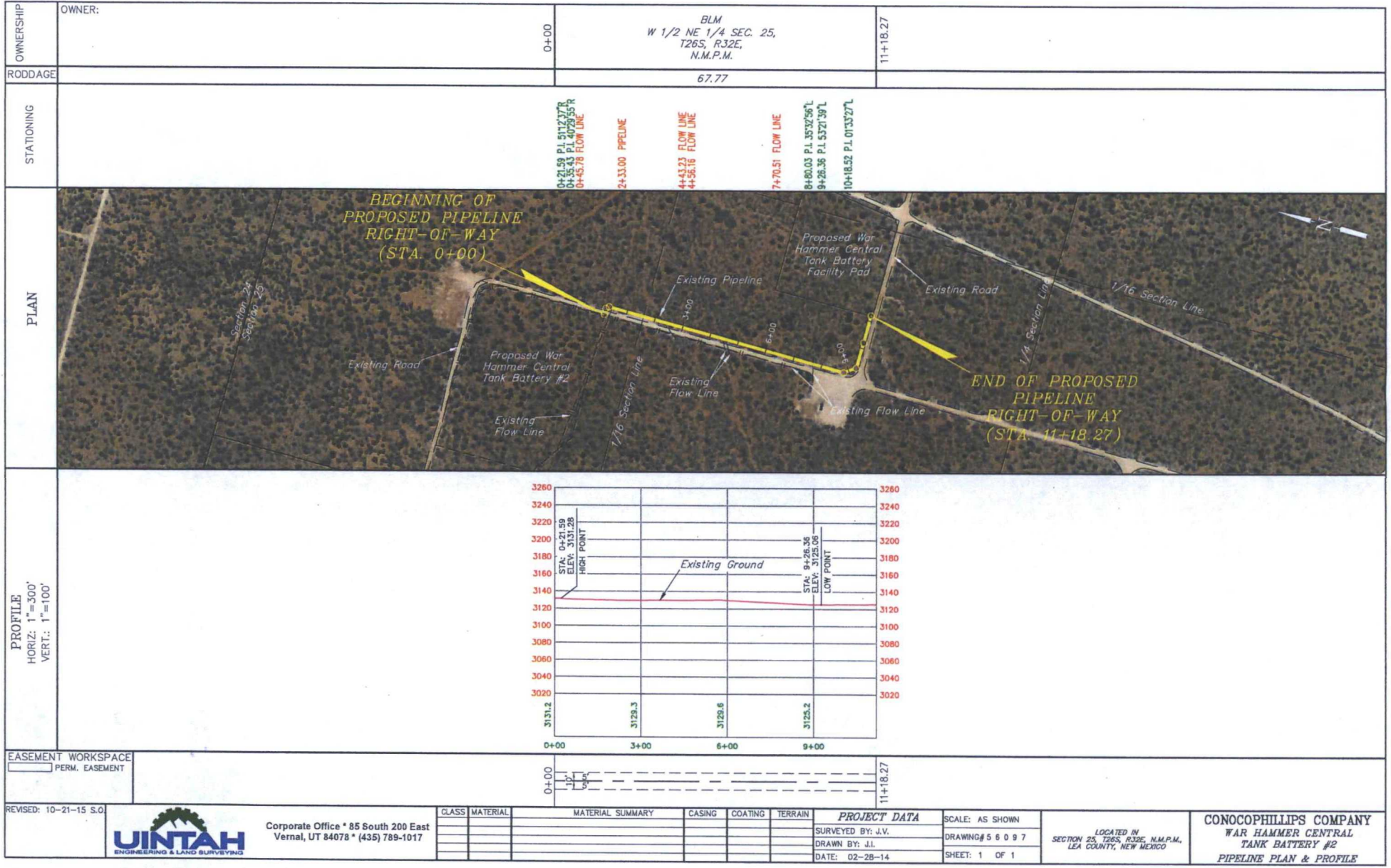
DATE: 02-16-14

REVISED:

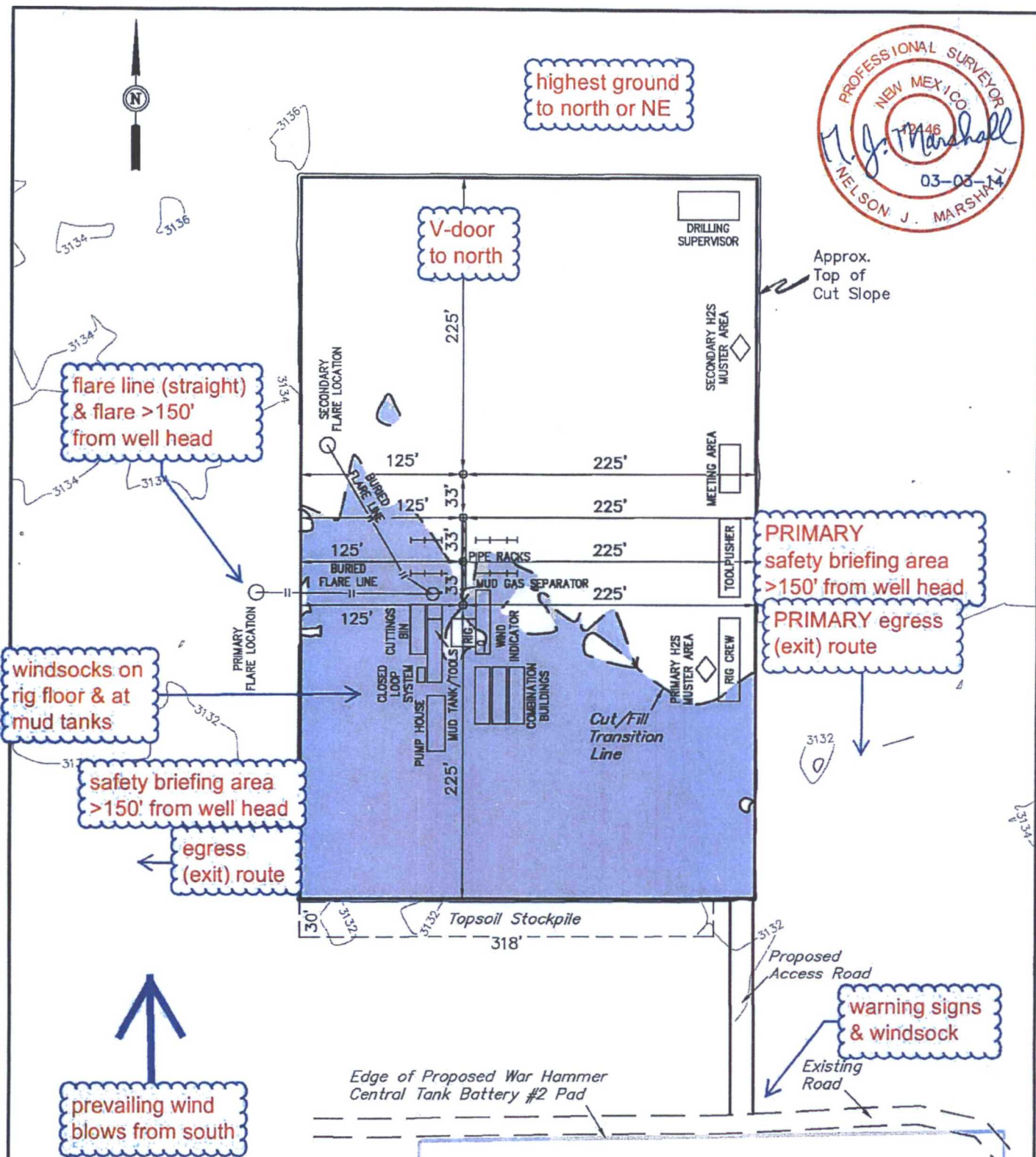
ARCHAEOLOGICAL SURVEY  
BOUNDARY

FIGURE #5









#### NOTES:

- Flare pit is to be located a min. of 160' from the well head.

ConocoPhillips

**ConocoPhillips Company**

WAR HAMMER 25 FEDERAL COM  
TC 16H, W1 15H, W2 14H & W3 13H  
SECTION 25, T26S, R32E, N.M.P.M.  
NW 1/4 NE 1/4

DRAWN BY: C.A.G.

SCALE: 1" = 100'

DATE: 02-16-14

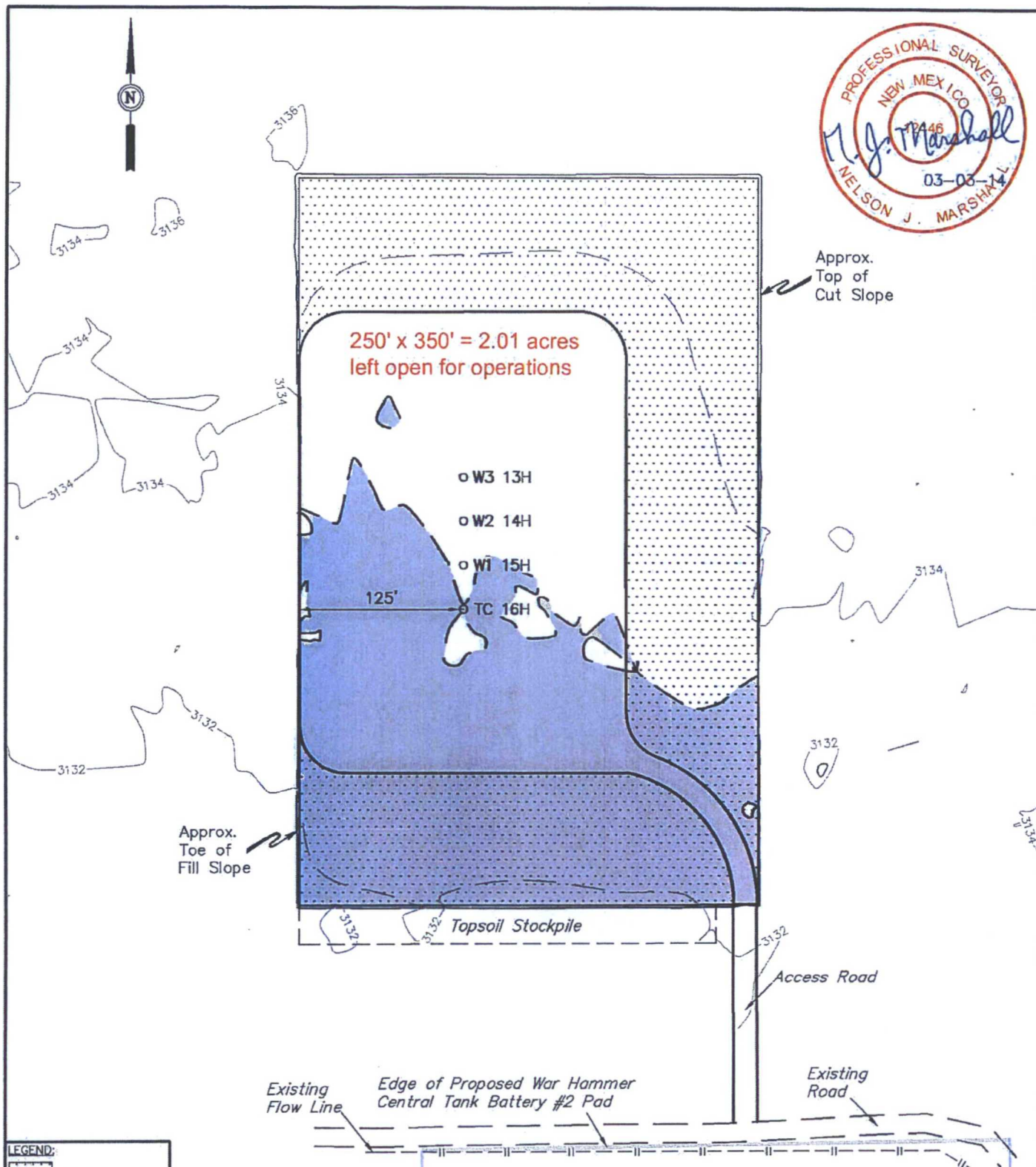
REVISED:

**HYDROGEN SULFIDE DIAGRAM**



Corporate Office \* 85 South 200 East  
Vernal, UT 84078 \* (435) 789-1017





**LEGEND:**  
 Reclaimed Area

**NOTES:**

ConocoPhillips

**ConocoPhillips Company**

WAR HAMMER 25 FEDERAL COM  
TC 16H, W1 15H, W2 14H & W3 13H  
SECTION 25, T26S, R32E, N.M.P.M.  
NW 1/4 NE 1/4

DRAWN BY: C.A.G.

SCALE: 1" = 100'

DATE: 02-16-14

REVISED:



Corporate Office \* 85 South 200 East  
Vernal, UT 84078 \* (435) 789-1017

**RECLAMATION DIAGRAM**

**FIGURE #4**