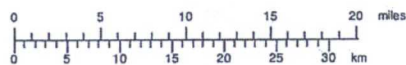
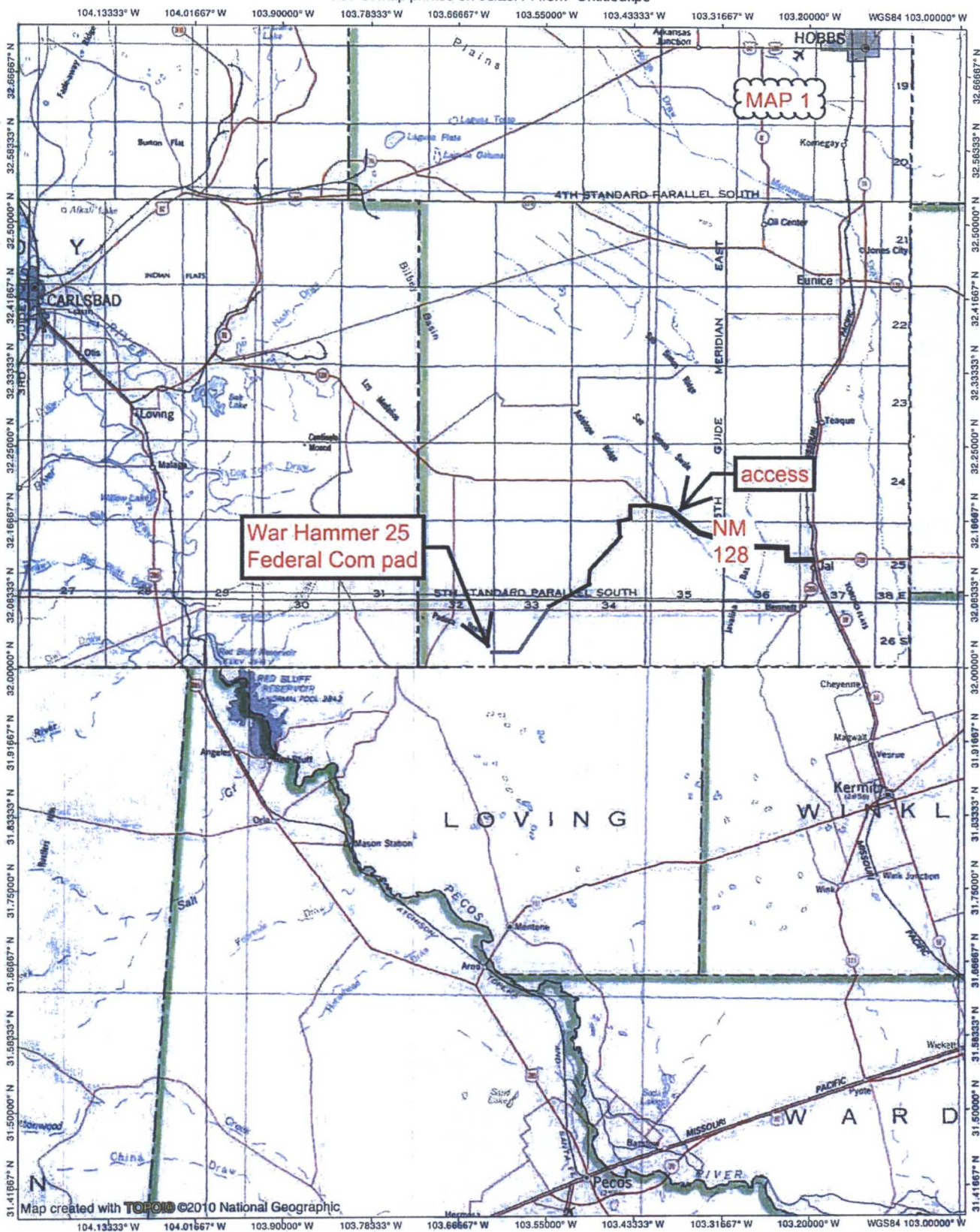
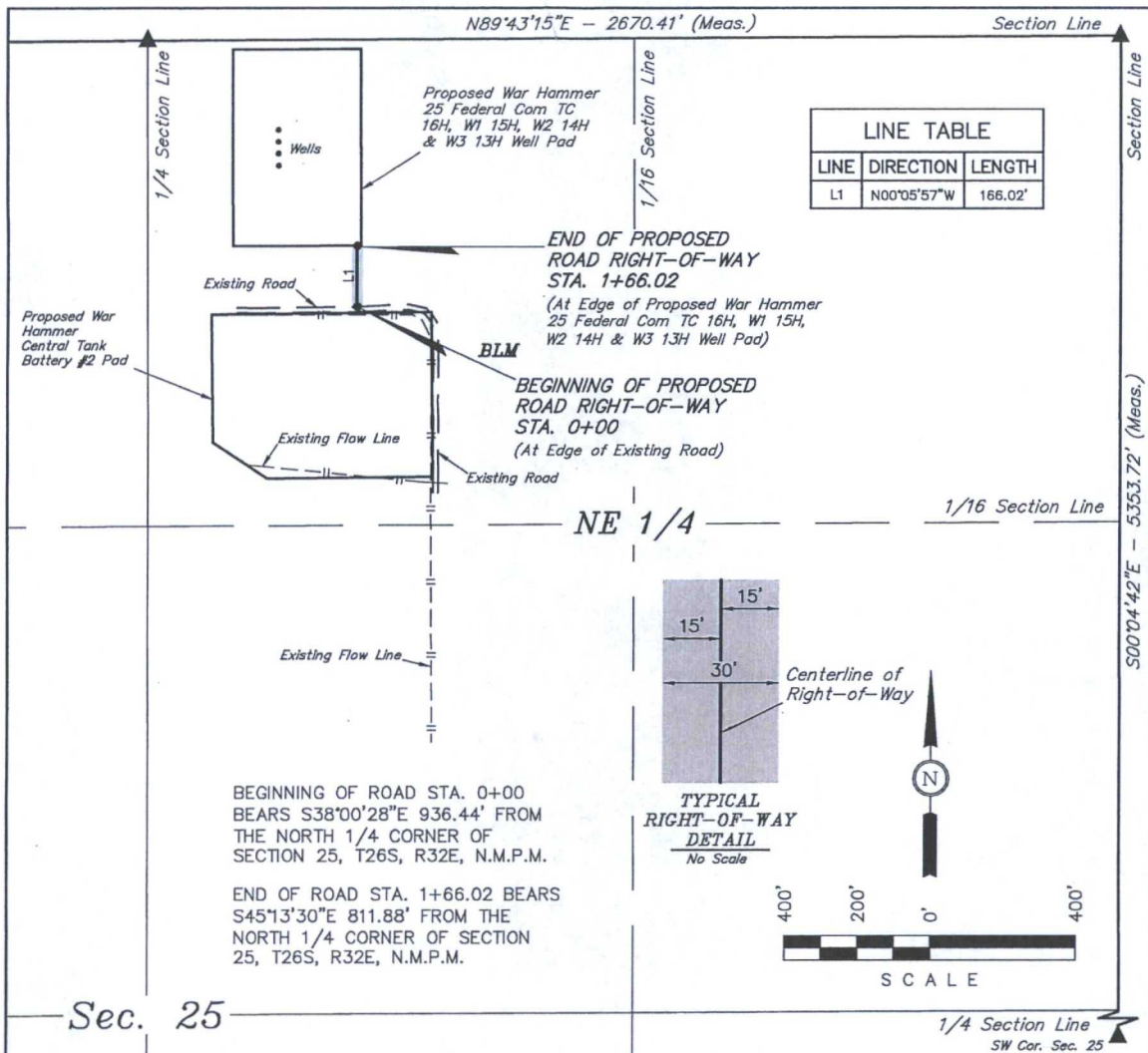


Certificate Number:

TOPO! map printed on 06/29/14 from "Untitled.tpo"



TN + MN
7°
06/29/14



ROAD RIGHT-OF-WAY DESCRIPTION

A 30' WIDE RIGHT-OF-WAY 15' ON EACH SIDE OF THE FOLLOWING DESCRIBED CENTERLINE.

BEGINNING AT A POINT IN THE NW 1/4 NE 1/4 OF SECTION 25, T26S, R32E, N.M.P.M., WHICH BEARS S38°00'28"E 936.44' FROM THE NORTH 1/4 CORNER OF SAID SECTION 25, THENCE N00°05'57"W 166.02' TO A POINT IN THE NW 1/4 NE 1/4 OF SAID SECTION 25, WHICH BEARS S45°13'30"E 811.88' FROM THE NORTH 1/4 CORNER OF SAID SECTION 25. THE SIDE LINES OF SAID DESCRIBED RIGHT-OF-WAY BEING SHORTENED OR ELONGATED TO MEET THE GRANTOR'S PROPERTY LINES. BASIS OF BEARINGS IS A G.P.S. OBSERVATION. CONTAINS 0.114 ACRES MORE OR LESS.

RIGHT-OF-WAY LENGTHS			
DESCRIPTION	FEET	ACRES	RODS
TOTAL	166.02	0.114	10.06

▲ = SECTION CORNERS LOCATED.

NOTES:

- The maximum grade of existing ground for the proposed access road is ± 0.5%.

CERTIFICATE
THIS IS TO CERTIFY THAT THE ABOVE PLAT WAS PREPARED FROM FIELD NOTES OF ACTUAL SURVEYS MADE BY ME OR UNDER MY SUPERVISION AND THAT THE SAME ARE TRUE AND CORRECT TO THE BEST OF MY KNOWLEDGE AND BELIEF.

Nelson J. Marshall
REGISTERED LAND SURVEYOR
REGISTRATION NO. 12446
STATE OF NEW MEXICO 05-16-16

REV: 3 05-11-16 C.D. (TANK BATTERY SIZE CHANGE)



Corporate Office * 85 South 200 East
Vernal, UT 84078 * (435) 789-1017

ConocoPhillips

ConocoPhillips Company

WAR HAMMER 25 FEDERAL COM
TC 16H, W1 15H, W2 14H & W3 13H
SECTION 25, T26S, R32E, N.M.P.M.
NW 1/4 NE 1/4

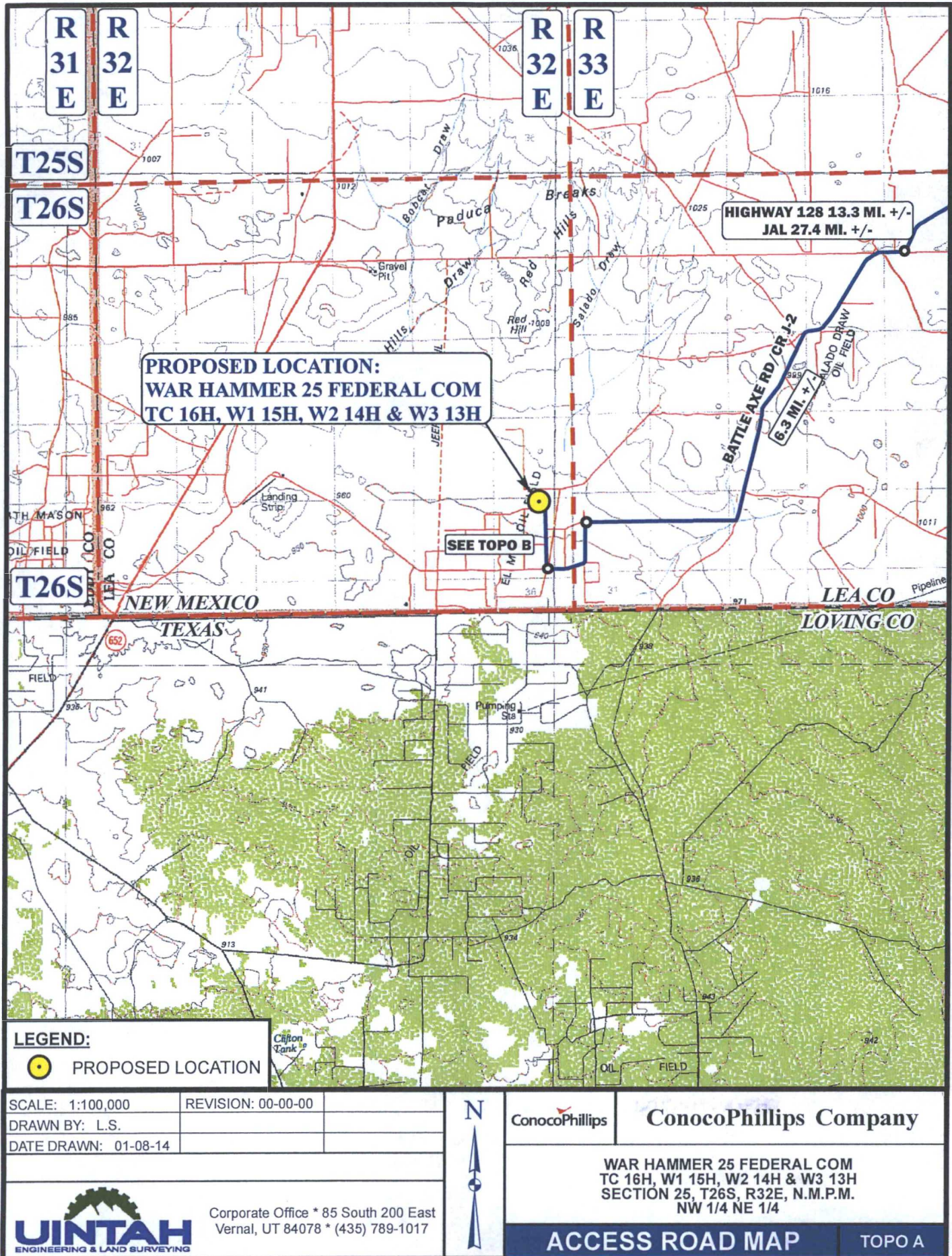
DRAWN BY: S.F.

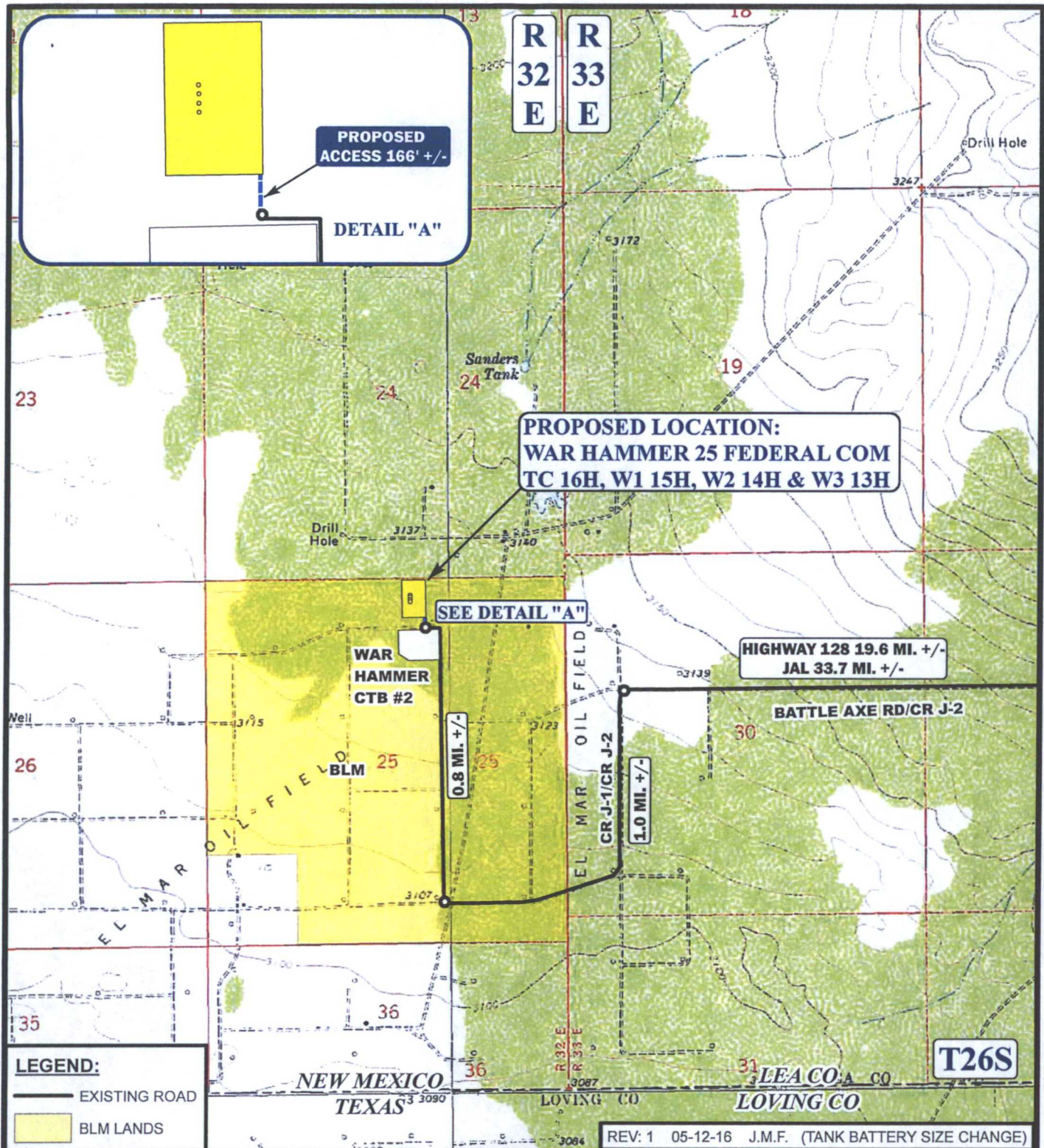
SCALE: 1" = 400'

DATE: 02-24-14

ACCESS ROAD R-O-W

FIGURE #6





*PARCEL DATA SHOWN HAS BEEN OBTAINED FROM VARIOUS SOURCES AND SHOULD BE USED FOR MAPPING, GRAPHIC AND PLANNING PURPOSES ONLY. NO WARRANTY IS MADE BY UINTAH ENGINEERING & LAND SURVEYING (UELS) FOR ACCURACY OF THE PARCEL DATA.

SCALE: 1" = 2000'

DRAWN BY: L.S.

DATE DRAWN: 01-08-14



Corporate Office * 85 South 200 East
Vernal, UT 84078 * (435) 789-1017



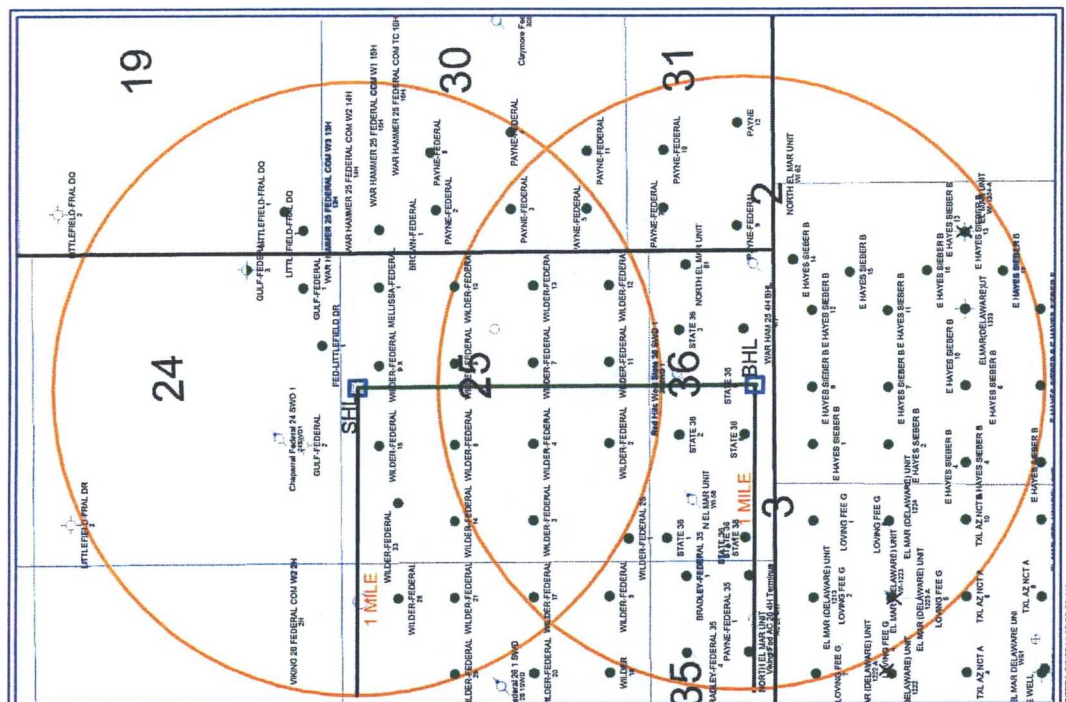
ConocoPhillips

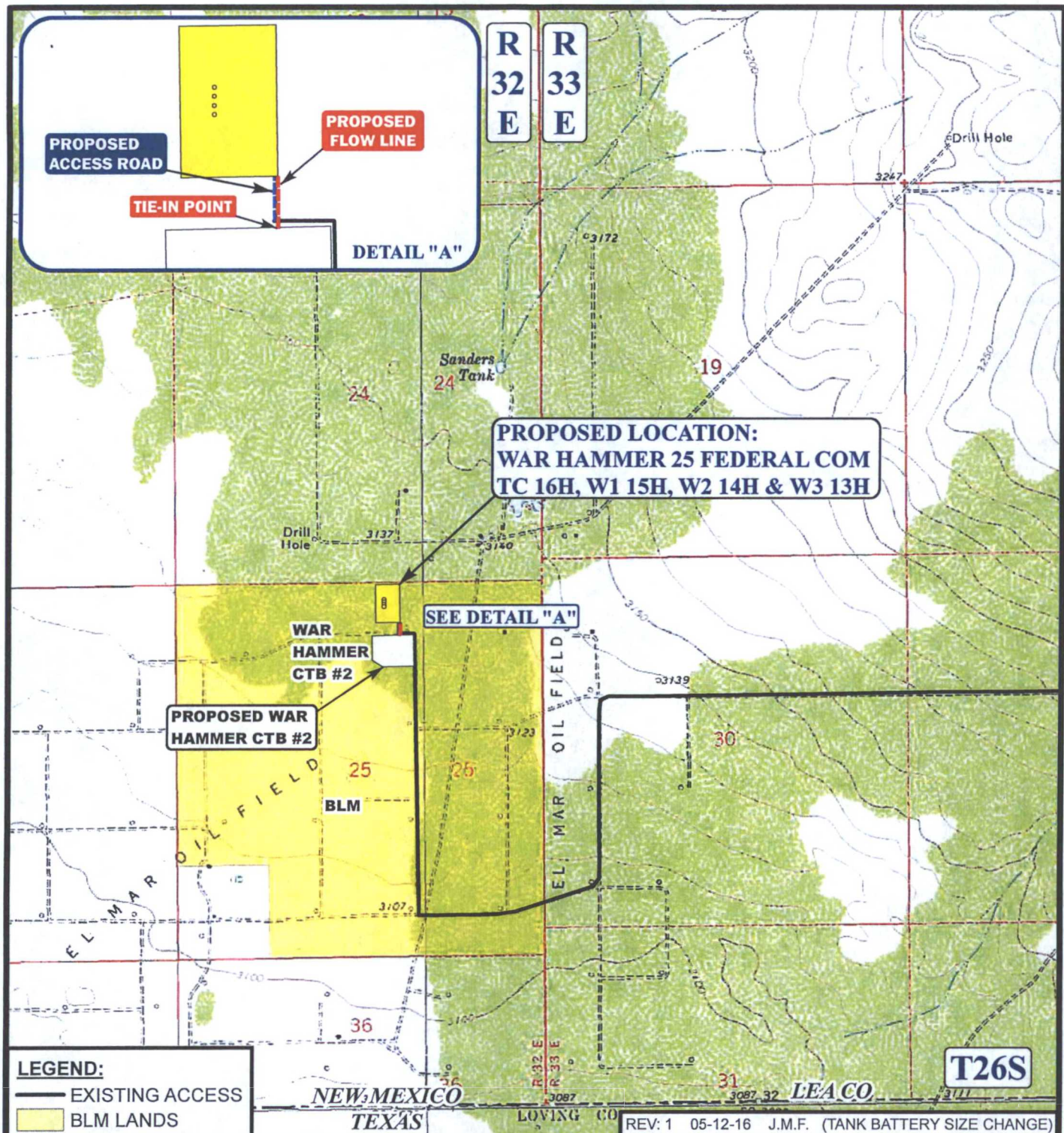
ConocoPhillips Company

WAR HAMMER 25 FEDERAL COM
TC 16H, W1 15H, W2 14H & W3 13H
NW 1/4 NE 1/4, SECTION 25, T26S, R32E, N.M.P.M.
LEA COUNTY, NEW MEXICO

ACCESS ROAD MAP

TOPO B





APPROXIMATE TOTAL FLOW LINE DISTANCE = 183' +/-

*PARCEL DATA SHOWN HAS BEEN OBTAINED FROM VARIOUS SOURCES AND SHOULD BE USED FOR MAPPING, GRAPHIC AND PLANNING PURPOSES ONLY. NO WARRANTY IS MADE BY UINTAH ENGINEERING & LAND SURVEYING (UELS) FOR ACCURACY OF THE PARCEL DATA.

SCALE: 1" = 2000'

DRAWN BY: L.S.

DATE DRAWN: 01-08-14



ConocoPhillips

ConocoPhillips Company

**WAR HAMMER 25 FEDERAL COM
TC 16H, W1 15H, W2 14H & W3 13H
NW 1/4 NE 1/4, SECTION 25, T26S, R32E, N.M.P.M.
LEA COUNTY, NEW MEXICO**

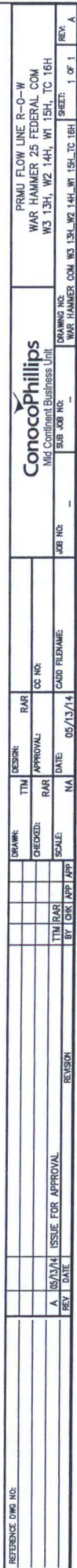
FLOW LINE MAP

TOPO D



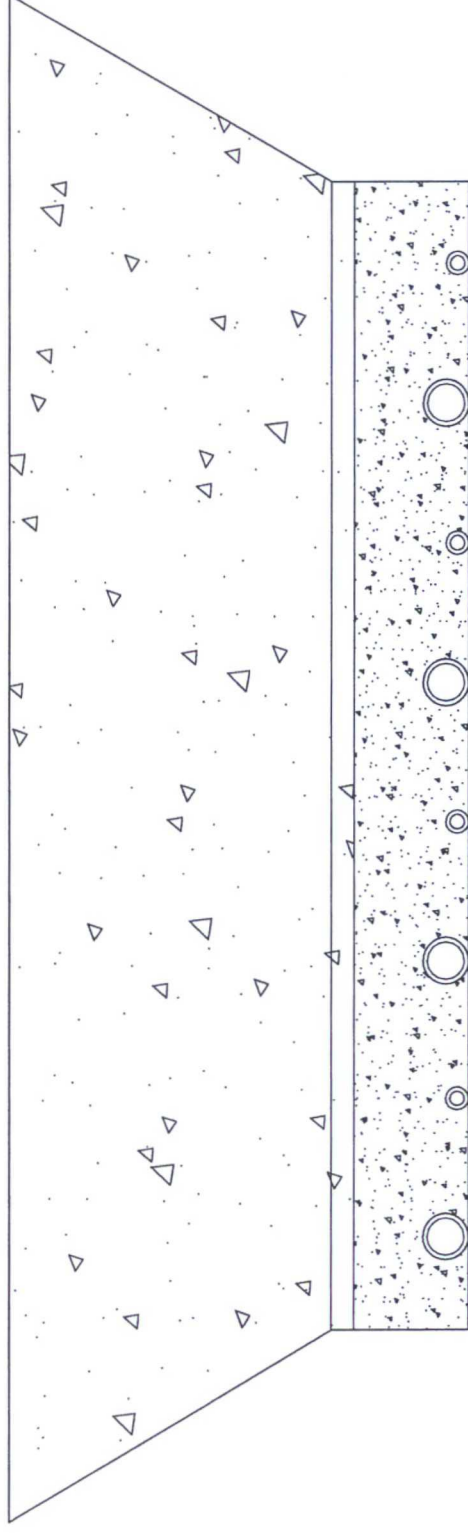
Corporate Office * 85 South 200 East
Vernal, UT 84078 * (435) 789-1017

	WAR	HAMMER	COM	W3	13H,	WAR	HAMMER	COM	W2	14H,	WAR	HAMMER	COM	W1	15H,	WAR	HAMMER	COM	TC	16H
FEDERAL	25	FEDERAL	COM	W3	13H,	WAR	HAMMER	COM	W2	14H,	WAR	HAMMER	COM	W1	15H,	WAR	HAMMER	COM	TC	16H



BACKFILL AROUND PIPE

WAR HAMMER 25 FEDERAL COM W3 13H, WAR HAMMER 25 FEDERAL COM
W2 14H, WAR HAMMER 25 FEDERAL COM W1 15H, WAR HAMMER 25
FEDERAL COM TC 16H



BACKFILL DIRT TO BE AS FREE OF ROCKS AND LARGE PARTICLES AS POSSIBLE

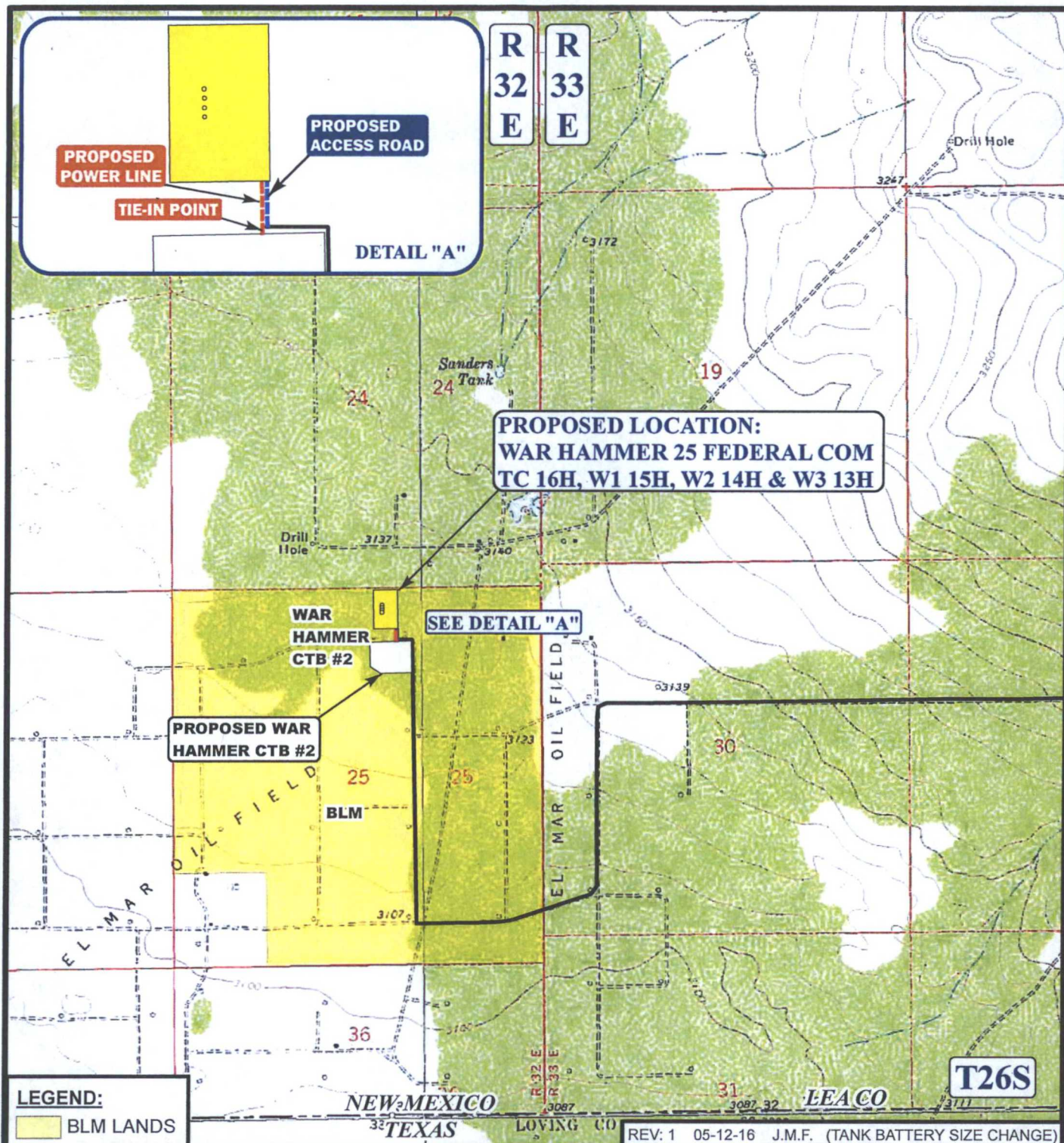
FLOW LINE WILL BE 4" COATED STEEL PIPE w/ AN OPERATING PRESSURE UP TO 1480# PSI.

GAS SUPPLY LINE WILL BE 2" STEEL PIPE w/ AN OPERATING PRESSURE UP TO 1100# PSI.

SOFT FILL DIRT OR SAND WITH NO ROCKS OR SOLID PARTICLES GREATER THAN 1" IN CIRCUMFERENCE

WAR HAMMER 25 FEDERAL COM W3 13H, WAR HAMMER 25 FEDERAL COM
W2 14H, WAR HAMMER 25 FEDERAL COM W1 15H, WAR HAMMER 25
FEDERAL COM TC 16H





APPROXIMATE TOTAL POWER LINE DISTANCE = 183' +/-

*PARCEL DATA SHOWN HAS BEEN OBTAINED FROM VARIOUS SOURCES AND SHOULD BE USED FOR MAPPING, GRAPHIC AND PLANNING PURPOSES ONLY. NO WARRANTY IS MADE BY UINTAH ENGINEERING & LAND SURVEYING (UELS) FOR ACCURACY OF THE PARCEL DATA.

SCALE: 1" = 2000'

DRAWN BY: L.S.

DATE DRAWN: 01-08-14



ConocoPhillips

ConocoPhillips Company

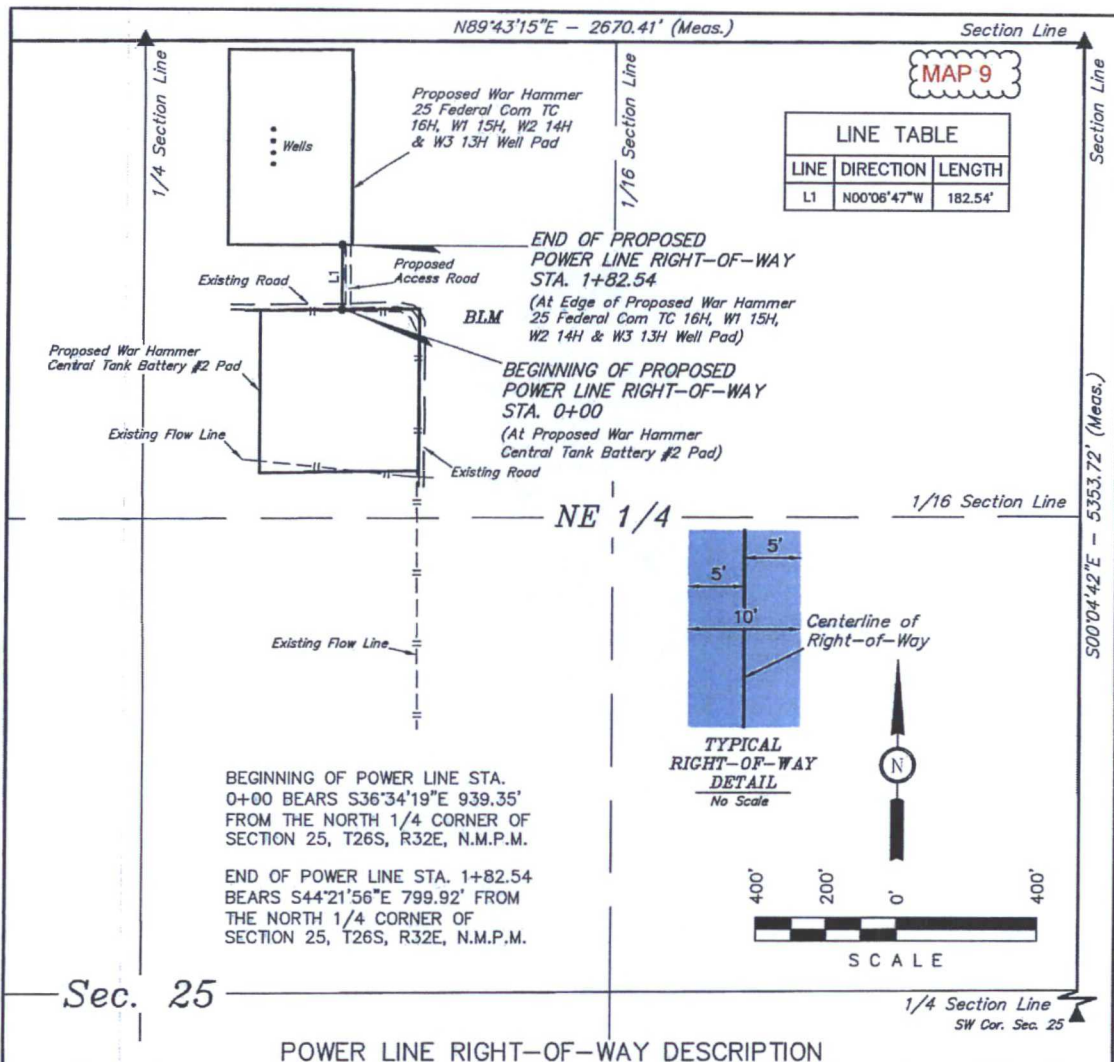
WAR HAMMER 25 FEDERAL COM
TC 16H, W1 15H, W2 14H & W3 13H
NW 1/4 NE 1/4, SECTION 25, T26S, R32E, N.M.P.M.
LEA COUNTY, NEW MEXICO

POWER LINE MAP

TOPO E



Corporate Office * 85 South 200 East
Vernal, UT 84078 * (435) 789-1017



RIGHT-OF-WAY LENGTHS

DESCRIPTION	FEET	ACRES	RODS
TOTAL	182.54	0.042	11.06

▲ = SECTION CORNERS LOCATED.

THIS IS TO CERTIFY THAT THE ABOVE PLAT WAS PREPARED FROM FIELD NOTES OF ACTUAL SURVEYS MADE BY ME OR UNDER MY SUPERVISION AND THAT THE SAME ARE TRUE AND CORRECT TO THE BEST OF MY KNOWLEDGE AND BELIEF.

CERTIFICATE OF PROFESSIONAL SURVEY

REGISTERED LAND SURVEYOR
REGISTRATION NO. 12446
STATE OF NEW MEXICO

03-03-14

NOTES:

ConocoPhillips

ConocoPhillips Company

WAR HAMMER 25 FEDERAL COM
TC 16H, W1 15H, W2 14H & W3 13H
SECTION 25, T26S, R32E, N.M.P.M.
NW 1/4 NE 1/4

DRAWN BY: S.F.

SCALE: 1" = 400'

DATE: 02-24-14

REVISED:

POWER LINE R-O-W

FIGURE #8



Corporate Office * 85 South 200 East
Vernal, UT 84078 * (435) 789-1017

MAP 10

War Hammer 25 Federal Com
W3 13H, W2 14H, W1 15H, TC 16H

166.02' proposed road
182.18' proposed pipelines
182.54' proposed power line

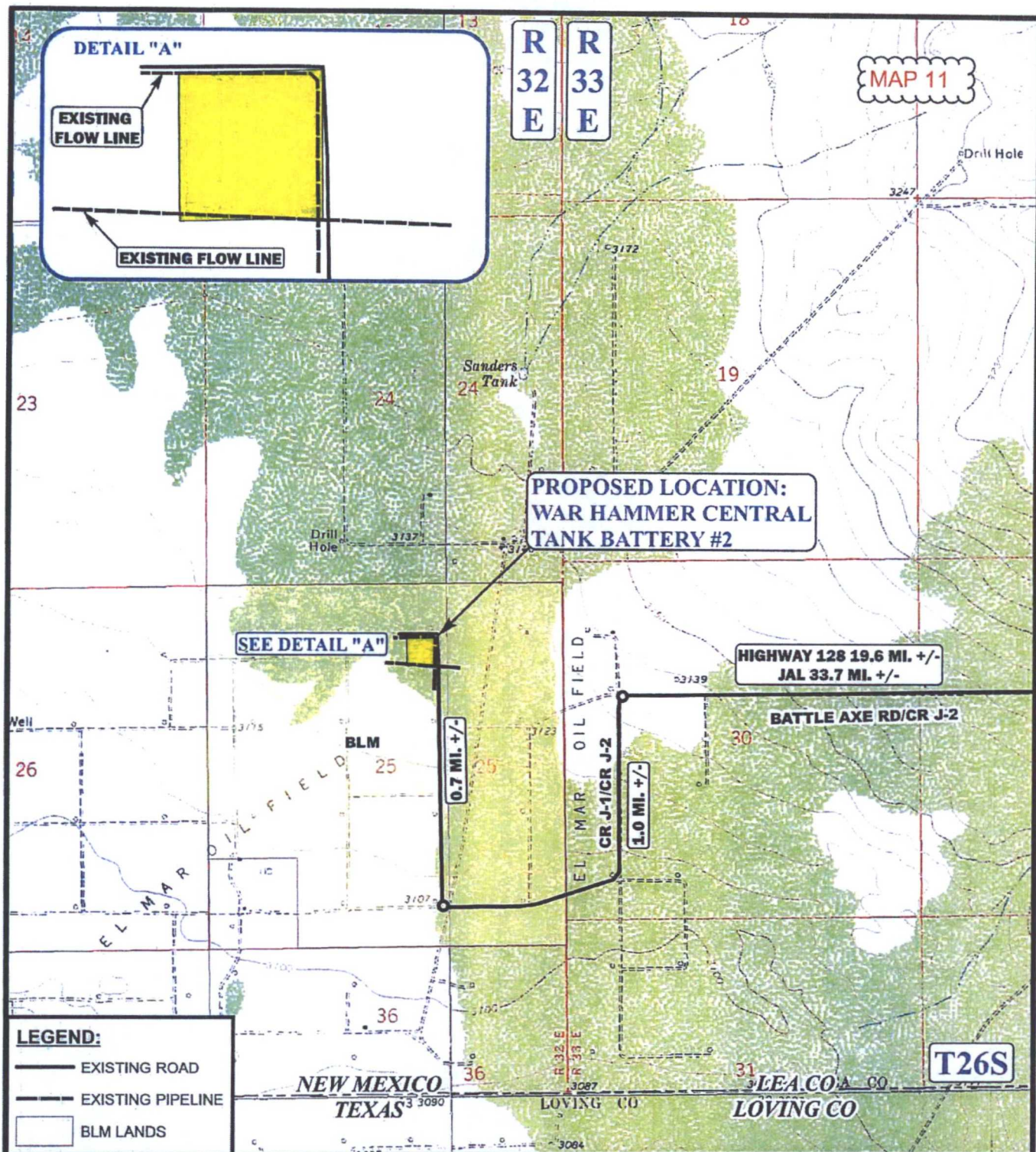
Central Tank
Battery 2

proposed
power line
1,106.67'

Google earth

Imagery Date: 4/7/2013 Lat: 32.017835° lon: -103.626147° elev: 3135 ft eye alt: 6450 ft

Survey



*PARCEL DATA SHOWN HAS BEEN OBTAINED FROM VARIOUS SOURCES AND SHOULD BE USED FOR MAPPING, GRAPHIC AND PLANNING PURPOSES ONLY. NO WARRANTY IS MADE BY UINTAH ENGINEERING & LAND SURVEYING (UELS) FOR ACCURACY OF THE PARCEL DATA.

SCALE: 1" = 2000' REVISION: 00-00-00

DRAWN BY: L.S.

DATE DRAWN: 02-24-14



ConocoPhillips

ConocoPhillips Company

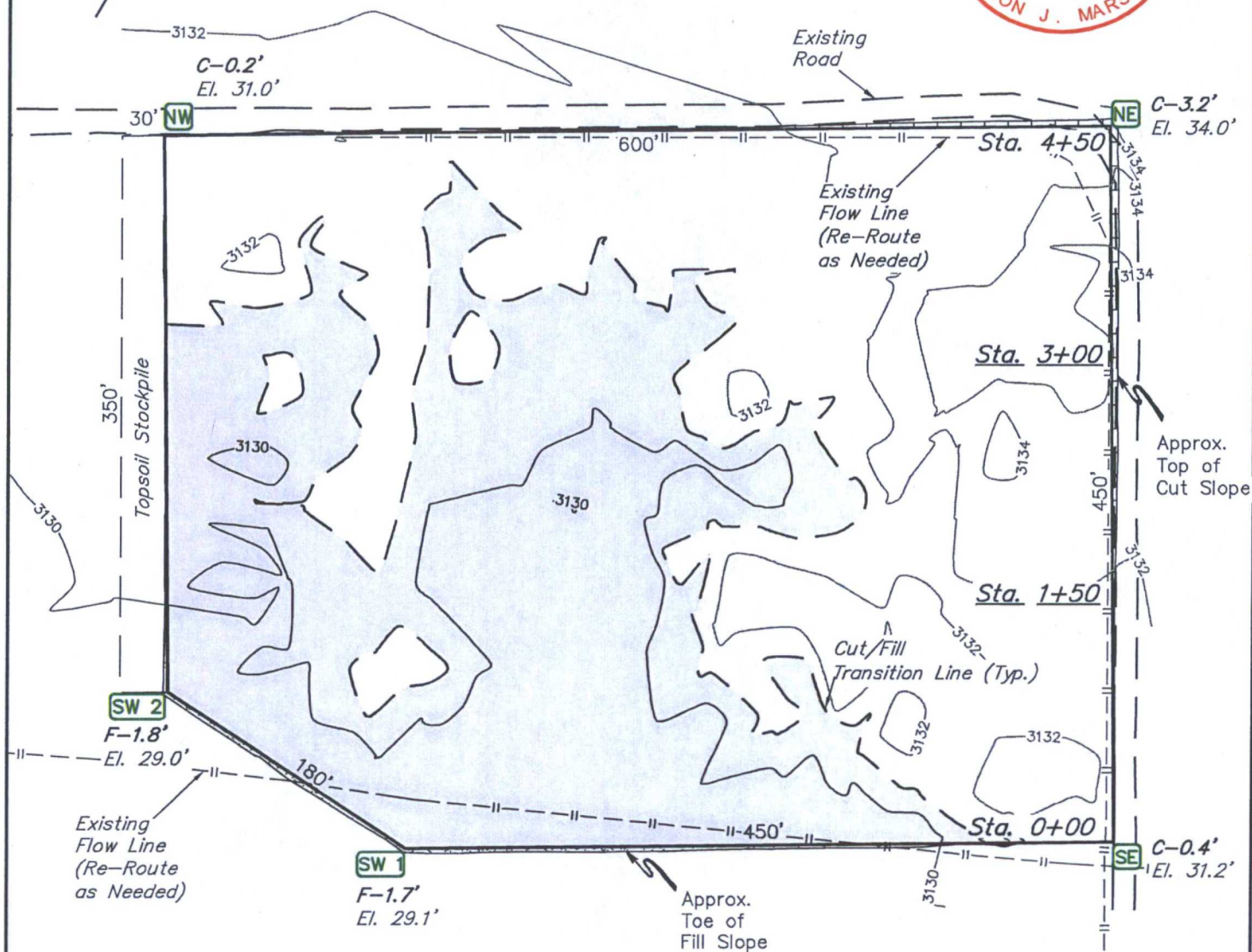
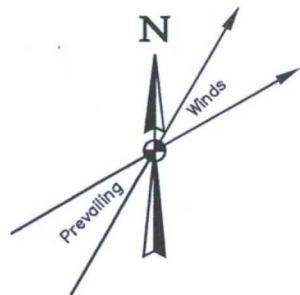
WAR HAMMER CENTRAL TANK BATTERY #2
SECTION 25, T26S, R32E, N.M.P.M.
NW 1/4 NE 1/4

ACCESS ROAD MAP

TOPO B



Corporate Office * 85 South 200 East
Vernal, UT 84078 * (435) 789-1017



FINISHED GRADE ELEVATION = 3130.8'

NOTES:

- Contours shown at 2' intervals.
- Underground utilities shown on this sheet are for visualization purposes only, actual locations to be determined prior to construction.

ConocoPhillips Company

**WAR HAMMER CENTRAL TANK BATTERY #2
NW 1/4 NE 1/4, SECTION 25, T26S, R32E, N.M.P.M.
LEA COUNTY, NEW MEXICO**

DRAWN BY: C.A.G.

DATE DRAWN: 02-20-14

SCALE: 1" = 100'

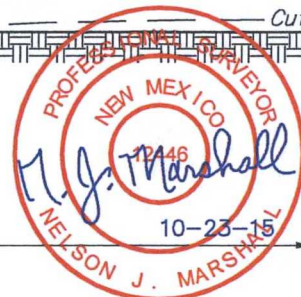
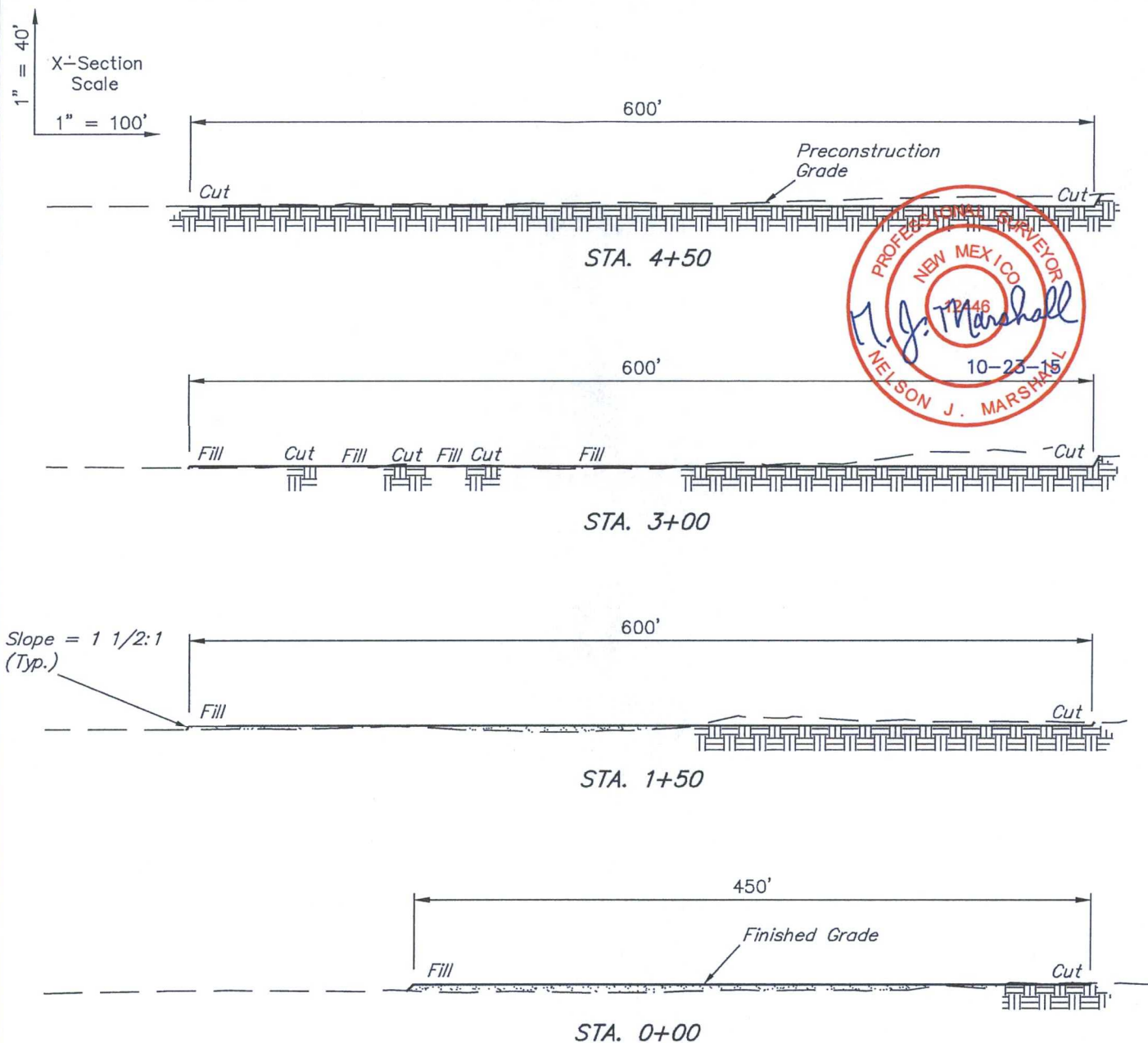
REVISED: 10-16-15 C.D.

LOCATION LAYOUT

FIGURE #1



UELS, LLC
Corporate Office * 85 South 200 East
Vernal, UT 84078 * (435) 789-1017



APPROXIMATE EARTHWORK QUANTITIES	
(3") TOPSOIL STRIPPING	2,470 Cu. Yds.
REMAINING LOCATION	5,420 Cu. Yds.
TOTAL CUT	7,890 Cu. Yds.
FILL	5,420 Cu. Yds.
EXCESS MATERIAL	2,470 Cu. Yds.
TOPSOIL	2,470 Cu. Yds.
EXCESS UNBALANCE (After Interim Rehabilitation)	0 Cu. Yds.

APPROXIMATE SURFACE DISTURBANCE AREAS		
	DISTANCE	ACRES
WELL SITE DISTURBANCE	NA	±6.343
30' WIDE PIPELINE R-O-W DISTURBANCE	±1118.27'	±0.770
30' WIDE POWER LINE R-O-W DISTURBANCE	±1106.67'	±0.762
TOTAL SURFACE USE AREA		±7.875

NOTES:

- Fill quantity includes 5% for compaction.

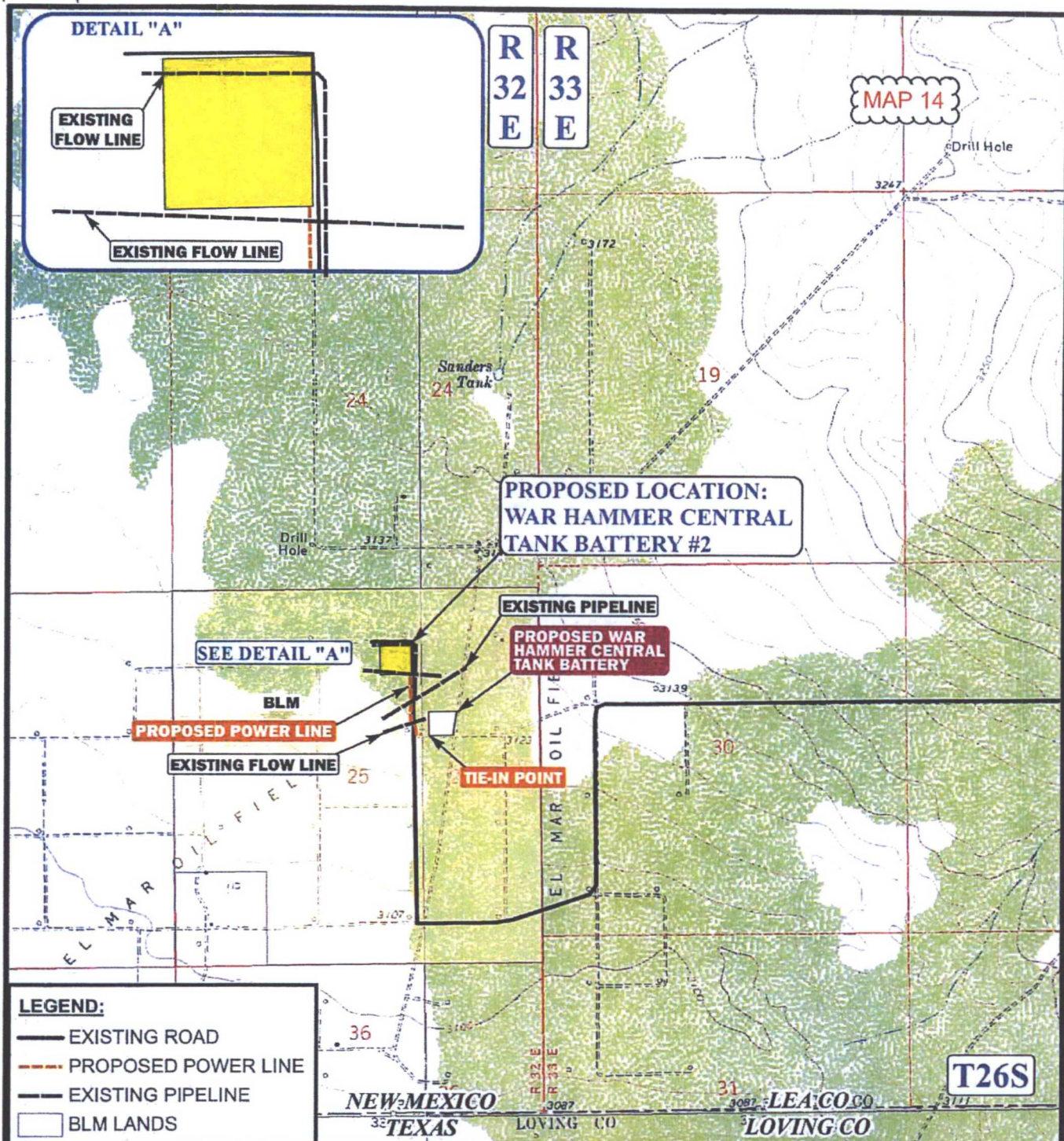
ConocoPhillips Company

WAR HAMMER CENTRAL TANK BATTERY #2
NW 1/4 NE 1/4, SECTION 25, T26S, R32E, N.M.P.M.
LEA COUNTY, NEW MEXICO

DRAWN BY: C.A.G.	DATE DRAWN: 02-20-14
SCALE: AS SHOWN	REVISED: 10-16-15 C.D.
TYPICAL CROSS SECTIONS	FIGURE #2



UELS, LLC
 Corporate Office * 85 South 200 East
 Vernal, UT 84078 * (435) 789-1017



APPROXIMATE TOTAL POWER LINE DISTANCE = 1,107' +/-

*PARCEL DATA SHOWN HAS BEEN OBTAINED FROM VARIOUS SOURCES AND SHOULD BE USED FOR MAPPING, GRAPHIC AND PLANNING PURPOSES ONLY. NO WARRANTY IS MADE BY UINAH ENGINEERING & LAND SURVEYING (UELS) FOR ACCURACY OF THE PARCEL DATA.

SCALE: 1" = 2000'

REVISED: 00-00-00

DRAWN BY: L.S.

DATE DRAWN: 02-24-14

N

ConocoPhillips

ConocoPhillips Company

WAR HAMMER CENTRAL TANK BATTERY #2
SECTION 25, T26S, R32E, N.M.P.M.
NW 1/4 NE 1/4



Corporate Office * 85 South 200 East
 Vernal, UT 84078 * (435) 789-1017

POWER LINE MAP

TOPO E

MAP 16

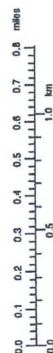
War Hammer 25
Federal Com
13H - 16H

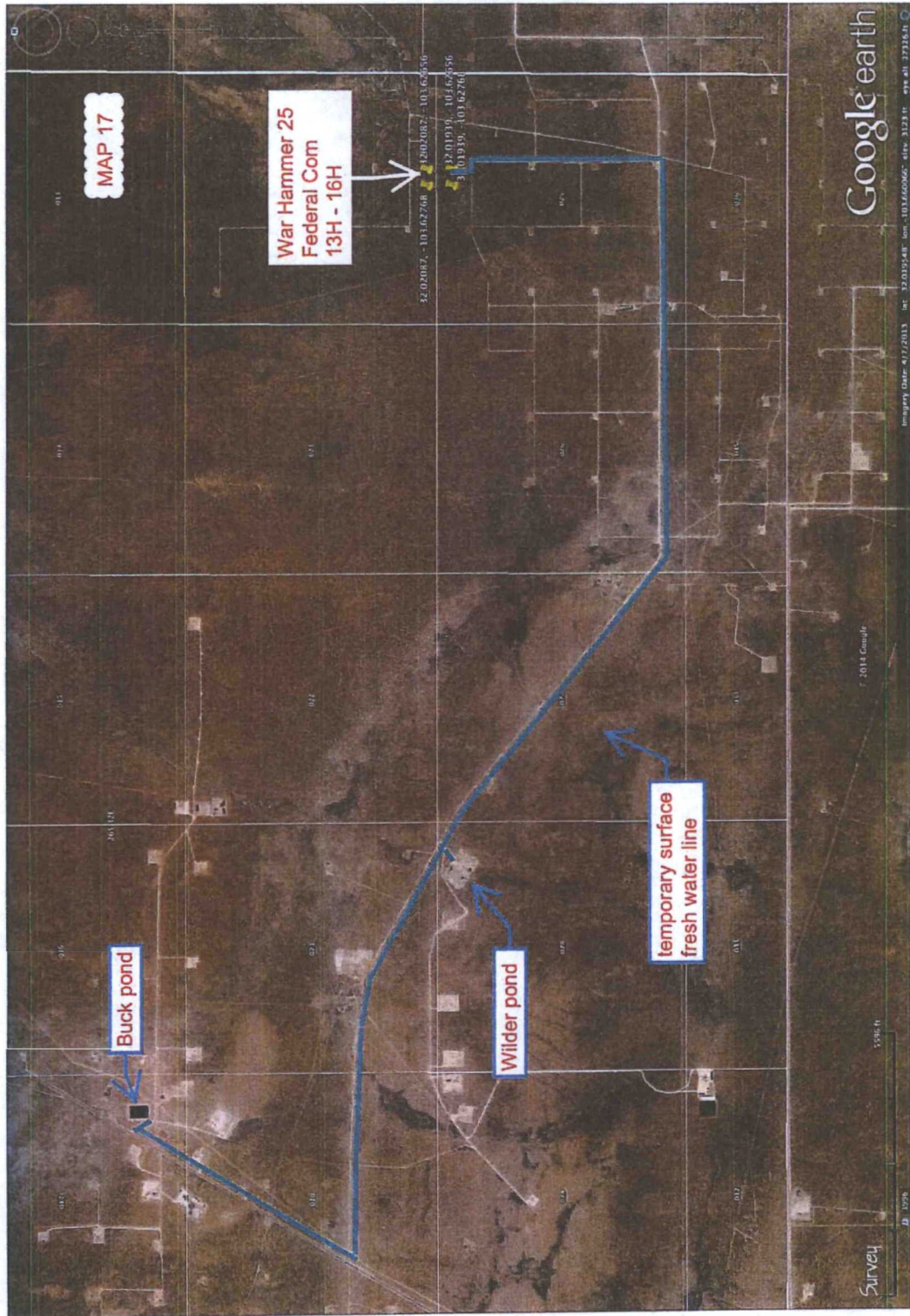
T26S, R32E

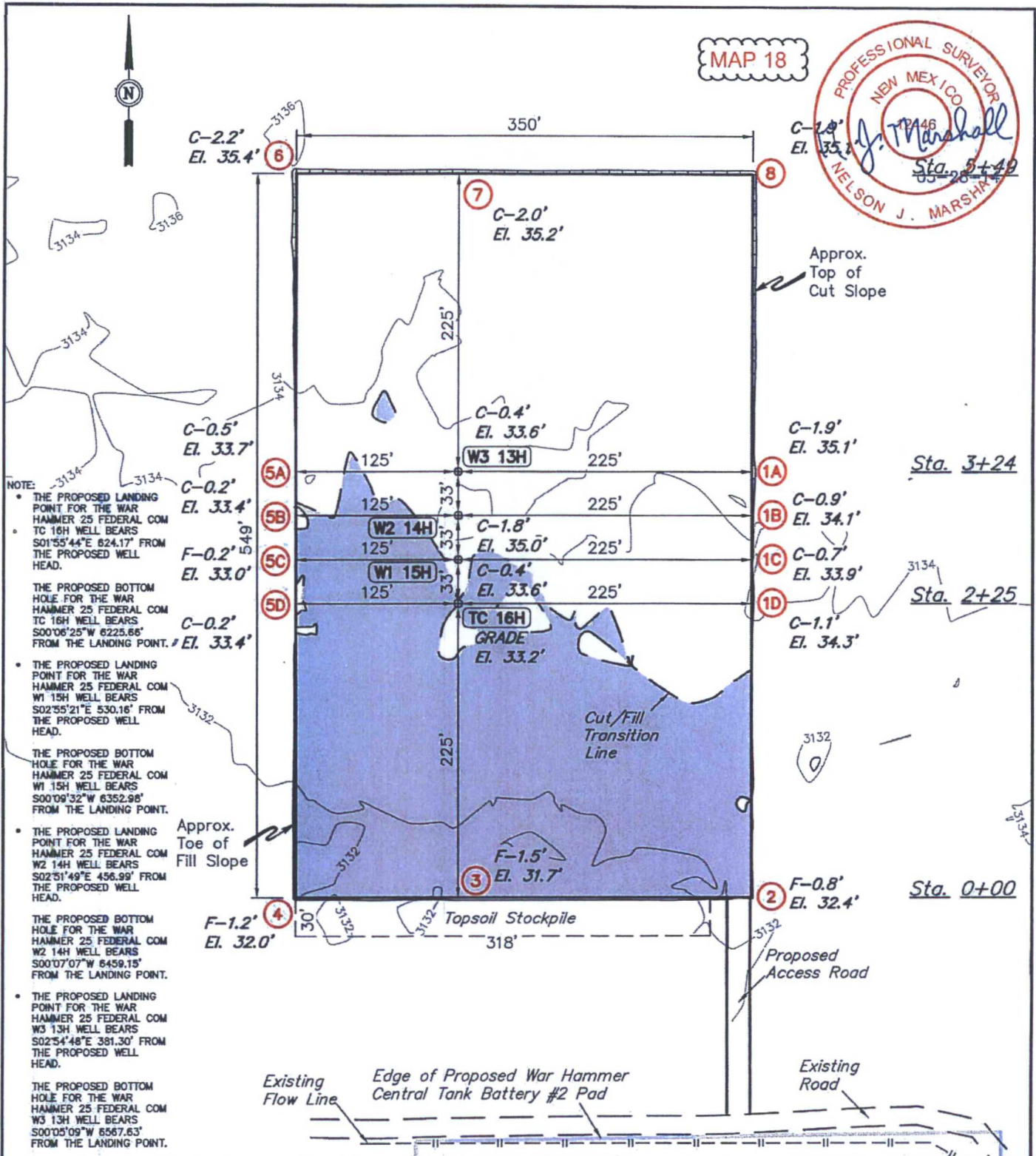
Buck pond

Wilder pond

temporary surface
fresh water line







ELEV. UNGRADED GROUND AT TC 16H LOC. STAKE = 3133.2' FINISHED GRADE ELEV. AT TC 16H LOC. STAKE = 3133.2'

NOTES:

- Flare pit is to be located a min. of 100' from the well head.
- Underground utilities shown on this sheet are for visualization purposes only, actual locations to be determined prior to construction.

ConocoPhillips

ConocoPhillips Company

**WAR HAMMER 25 FEDERAL COM
TC 16H, W1 15H, W2 14H & W3 13H
SECTION 25, T26S, R32E, N.M.P.M.
NW 1/4 NE 1/4**

DRAWN BY: C.A.G.

SCALE: 1" = 100'

DATE: 02-16-14

REVISED: 05-23-14 S.F.

LOCATION LAYOUT

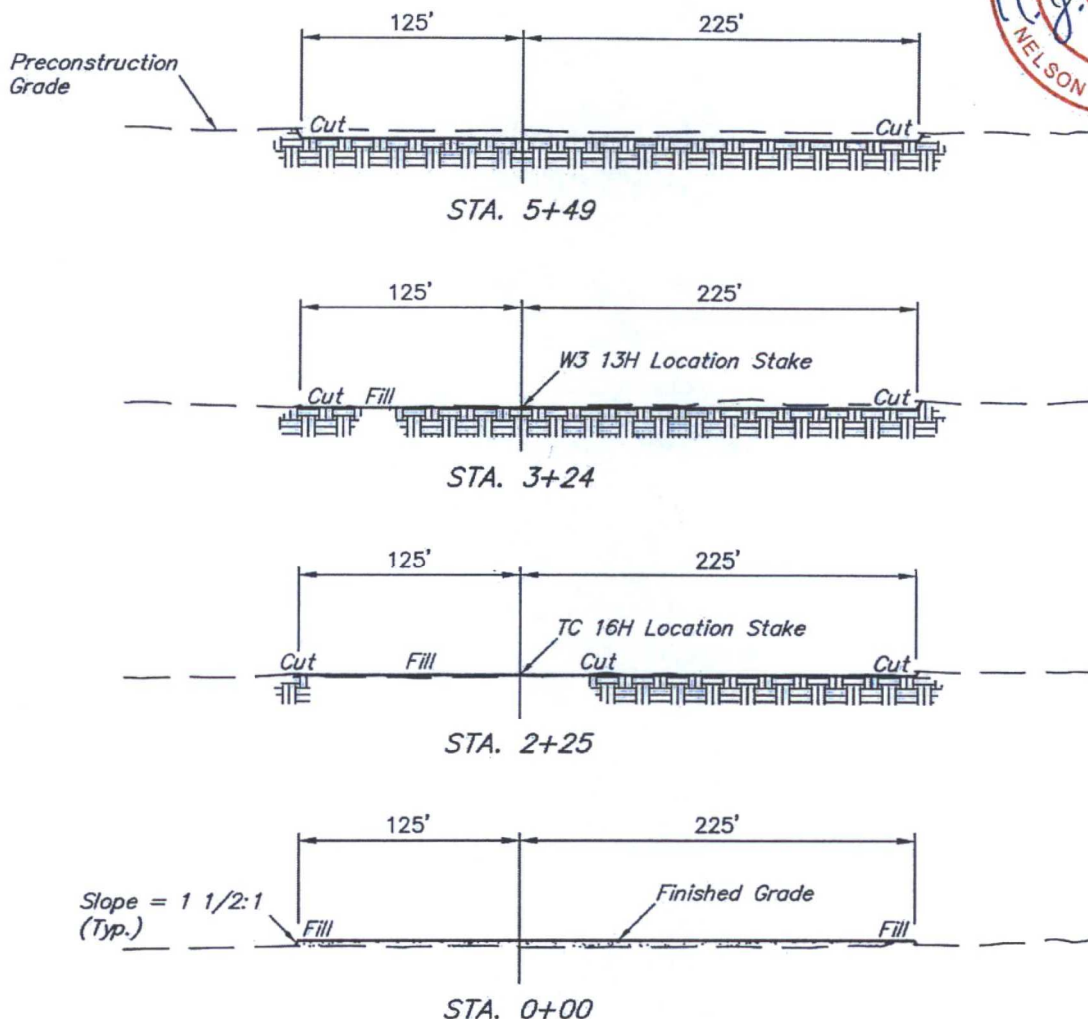
FIGURE #1



Corporate Office * 85 South 200 East
Vernal, UT 84078 * (435) 789-1017

1" = 40'
X-Section
Scale
1" = 100'

MAP 19



APPROXIMATE EARTHWORK QUANTITIES		APPROXIMATE SURFACE DISTURBANCE AREAS		
(3") TOPSOIL STRIPPING	1,810 Cu. Yds.		DISTANCE	ACRES
REMAINING LOCATION	3,490 Cu. Yds.	WELL SITE DISTURBANCE	NA	±4.486
TOTAL CUT	5,300 Cu. Yds.	ACCESS ROAD DISTURBANCE	±166.02'	±0.076
FILL	3,490 Cu. Yds.	FLOW LINE DISTURBANCE	±182.18'	±0.042
EXCESS MATERIAL	1,810 Cu. Yds.	POWER LINE DISTURBANCE	±182.54'	±0.042
TOPSOIL	1,810 Cu. Yds.	TOTAL DISTURBANCE	±530.74'	±4.646
EXCESS UNBALANCE (After Interim Rehabilitation)	0 Cu. Yds.			

NOTES:

- Fill quantity includes 5% for compaction.
- Topsoil should not be stripped below finished grade on substructure area.

ConocoPhillips

ConocoPhillips Company

WAR HAMMER 25 FEDERAL COM
TC 16H, W1 15H, W2 14H & W3 13H
SECTION 25, T26S, R32E, N.M.P.M.
NW 1/4 NE 1/4

DRAWN BY: C.A.G.

SCALE: AS SHOWN

DATE: 02-16-14

REVISED:



Corporate Office * 85 South 200 East
Vernal, UT 84078 * (435) 789-1017

TYPICAL CROSS SECTIONS

FIGURE #2



MAP 20



- W3 13H
- W2 14H
- W1 15H
- TC 16H

Topsoil Stockpile

700' X 600'
Archaeological Survey
Boundary

Proposed
Access Road

Existing
Road

Existing
Flow Line

Edge of Proposed War Hammer
Central Tank Battery #2 Pad

NOTES:

ConocoPhillips

ConocoPhillips Company

WAR HAMMER 25 FEDERAL COM
TC 16H, W1 15H, W2 14H & W3 13H
SECTION 25, T26S, R32E, N.M.P.M.
NW 1/4 NE 1/4



Corporate Office * 85 South 200 East
Vernal, UT 84078 * (435) 789-1017

DRAWN BY: C.A.G.

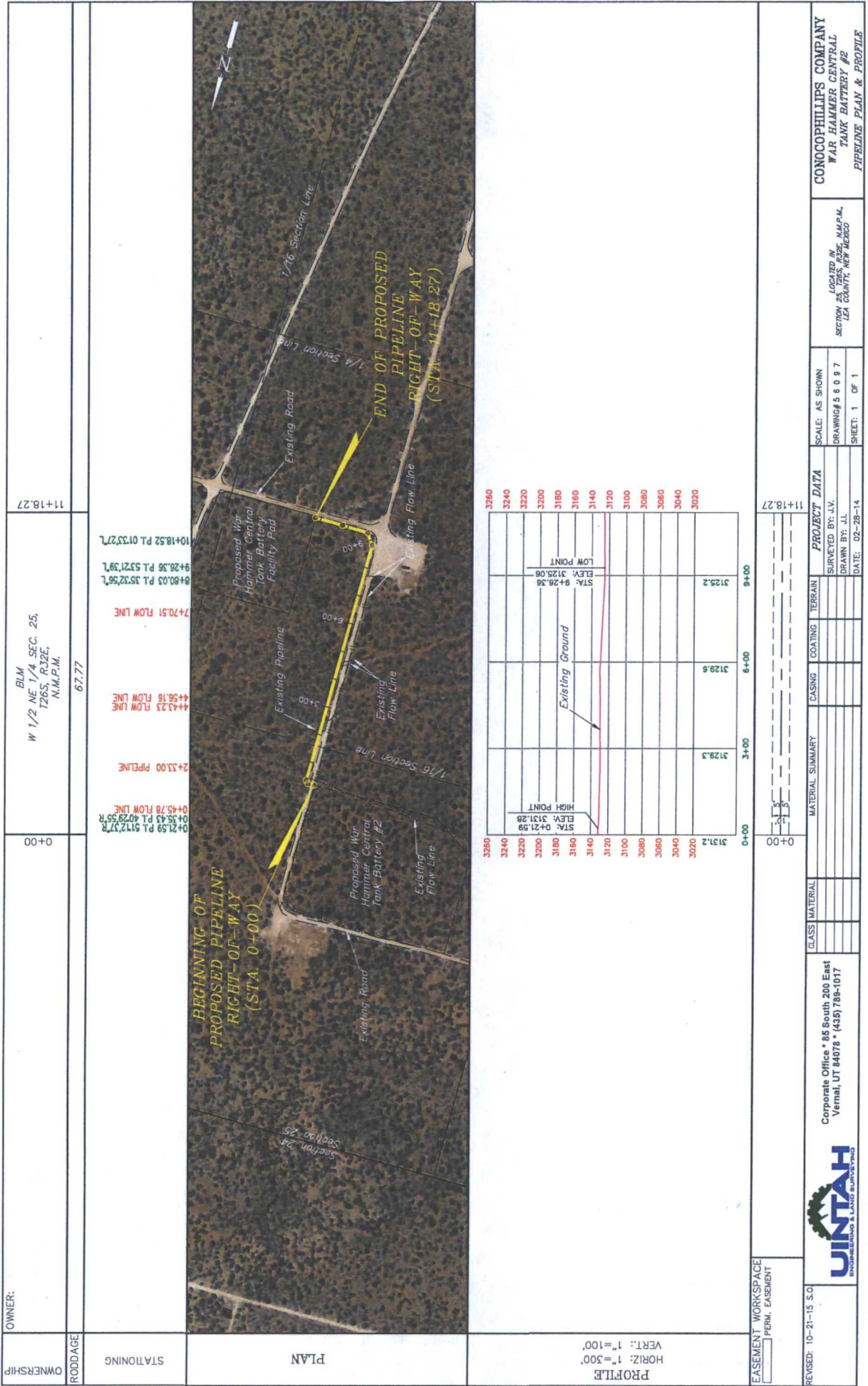
SCALE: 1" = 100'

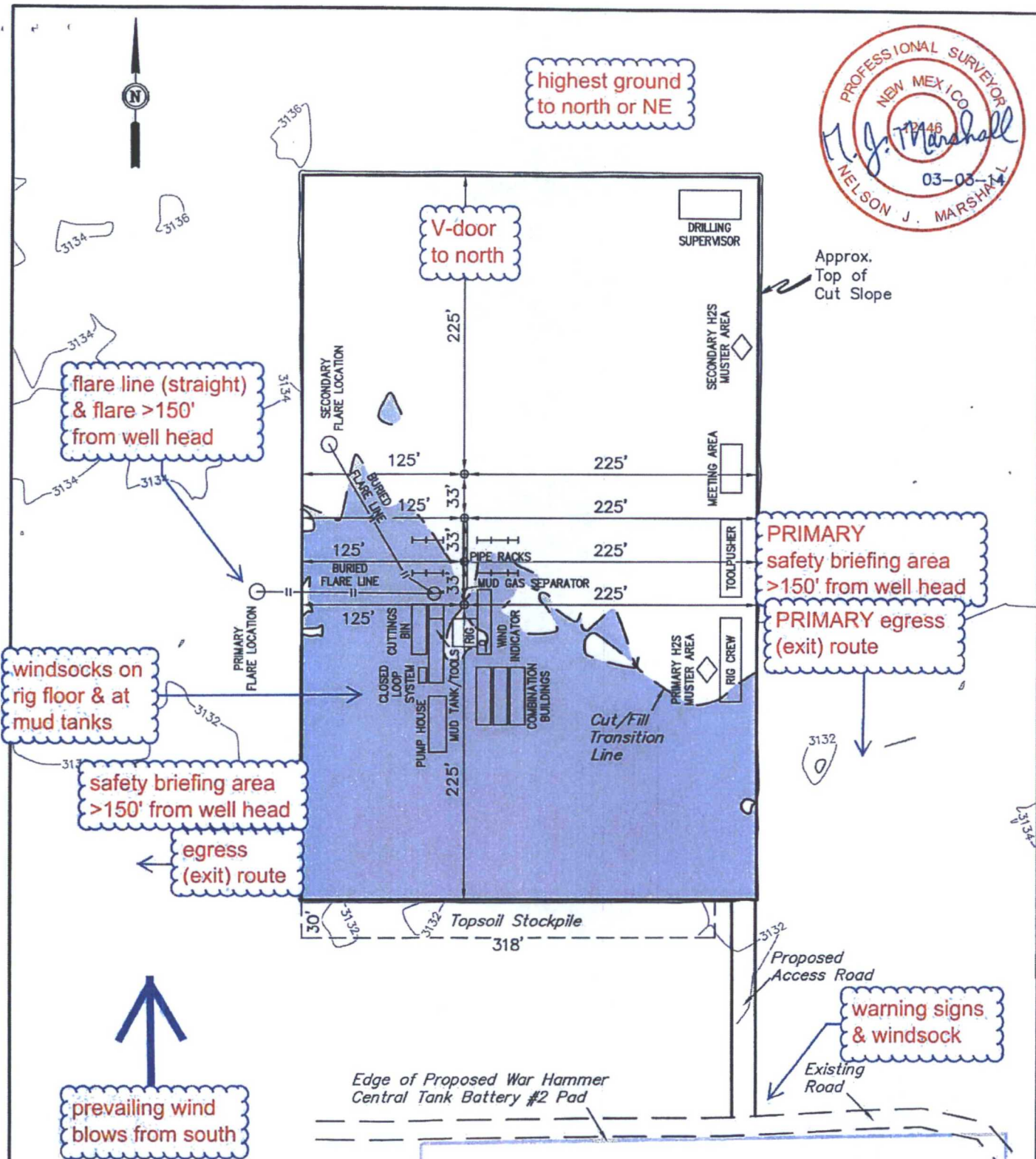
DATE: 02-16-14

REVISED:

ARCHAEOLOGICAL SURVEY
BOUNDARY

FIGURE #5





NOTES:

- Flare pit is to be located a min. of 160' from the well head.

ConocoPhillips

ConocoPhillips Company

WAR HAMMER 25 FEDERAL COM
TC 16H, W1 15H, W2 14H & W3 13H
SECTION 25, T26S, R32E, N.M.P.M.
NW 1/4 NE 1/4

DRAWN BY: C.A.G.

SCALE: 1" = 100'

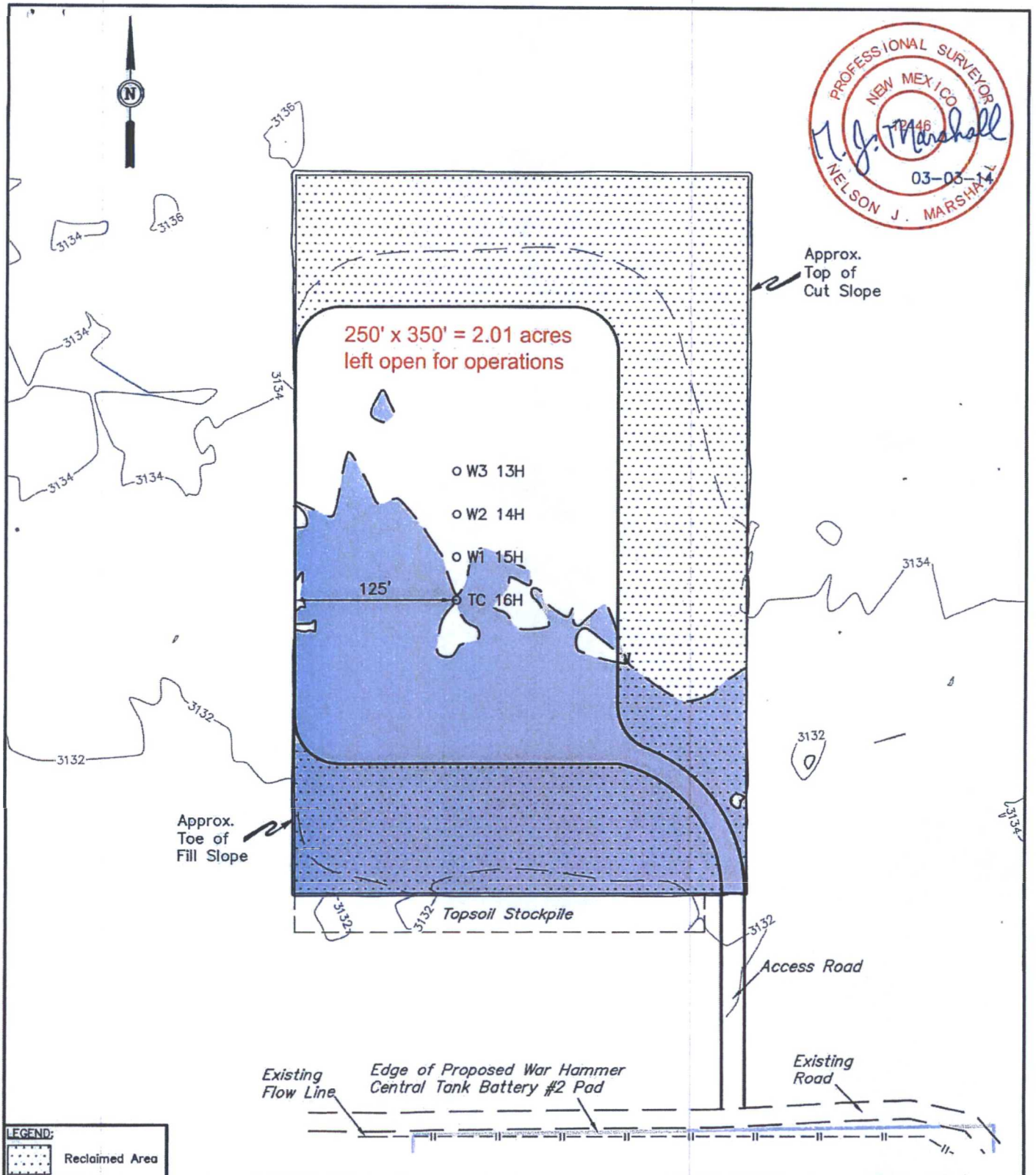
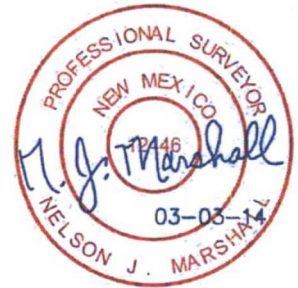
DATE: 02-16-14

REVISED:

HYDROGEN SULFIDE DIAGRAM



Corporate Office * 85 South 200 East
Vernal, UT 84078 * (435) 789-1017



LEGEND:

Reclaimed Area

NOTES:

ConocoPhillips

ConocoPhillips Company

**WAR HAMMER 25 FEDERAL COM
TC 16H, W1 15H, W2 14H & W3 13H
SECTION 25, T26S, R32E, N.M.P.M.
NW 1/4 NE 1/4**

DRAWN BY: C.A.G.

SCALE: 1" = 100'

DATE: 02-16-14

REVISED:

Corporate Office * 85 South 200 East
Vernal, UT 84078 * (435) 789-1017



RECLAMATION DIAGRAM

FIGURE #4