

District I
1625 N. French Dr., Hobbs, NM 88240
Phone: (575) 393-6161 Fax: (575) 393-0720
District II
811 S. First St., Artesia, NM 88210
Phone: (575) 748-1283 Fax: (575) 748-9720
District III
1000 Rio Brazos Road, Aztec, NM 87410
Phone: (505) 334-6178 Fax: (505) 334-6170
District IV
1220 S. St. Francis Dr., Santa Fe, NM 87505
Phone: (505) 476-3460 Fax: (505) 476-3462

State of New Mexico
Energy, Minerals & Natural Resources Department
OIL CONSERVATION DIVISION
1220 South St. Francis Dr.
Santa Fe, NM 87505

Form C-102
Revised August 1, 2011
Submit one copy to appropriate
District Office

☐ AMENDED REPORT

HOBBS CO
JUL 20 2016
RECEIVED

WELL LOCATION AND ACREAGE DEDICATION PLAT

¹ API Number 30-025- 43367	² Pool Code 43329	³ Pool Name Maljamar, Grayburg, San Andres
⁴ Property Code 31422	⁵ Property Name MCA UNIT	⁶ Well Number 556
⁷ OGRID No. 217817	⁸ Operator Name ConocoPhillips Company	⁹ Elevation 3934.1'

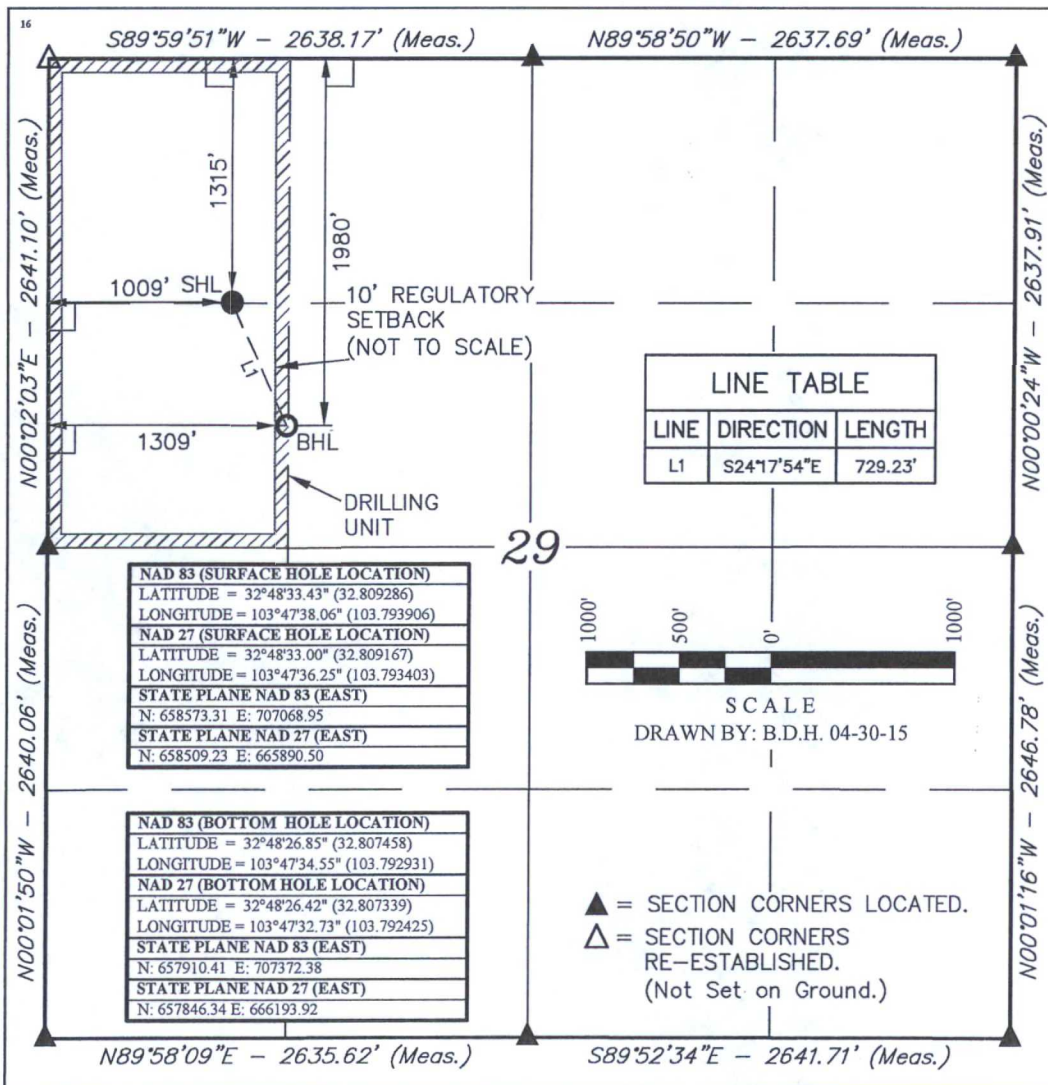
¹⁰ Surface Location

UL or lot no.	Section	Township	Range	Lot Idn	Feet from the	North/South line	Feet from the	East/West line	County
D	29	17 S	32 E		1315	NORTH	1009	WEST	LEA

¹¹ Bottom Hole Location If Different From Surface

UL or lot no.	Section	Township	Range	Lot Idn	Feet from the	North/South line	Feet from the	East/West line	County
E	29	17 S	32 E		1980	NORTH	1309	WEST	LEA
¹² Dedicated Acres 40	¹³ Joint or Infill	¹⁴ Consolidation Code	¹⁵ Order No.						

No allowable will be assigned to this completion until all interests have been consolidated or a non-standard unit has been approved by the division.



¹⁷ OPERATOR CERTIFICATION

I hereby certify that the information contained herein is true and complete to the best of my knowledge and belief, and that this organization either owns a working interest or unleased mineral interest in the land including the proposed bottom hole location or has a right to drill this well at this location pursuant to a contract with an owner of such a mineral or working interest, or to a voluntary pooling agreement or a compulsory pooling order heretofore entered by the division.

Susan B. Maunder 6/26/15
Signature Date

Susan B. Maunder
Printed Name

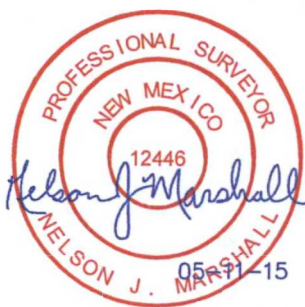
Susan.B.Maunder@cop.com
E-mail Address

¹⁸ SURVEYOR CERTIFICATION

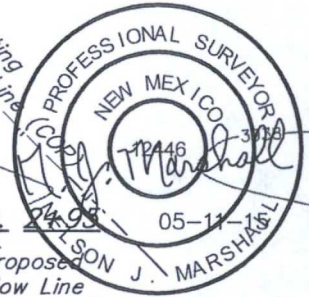
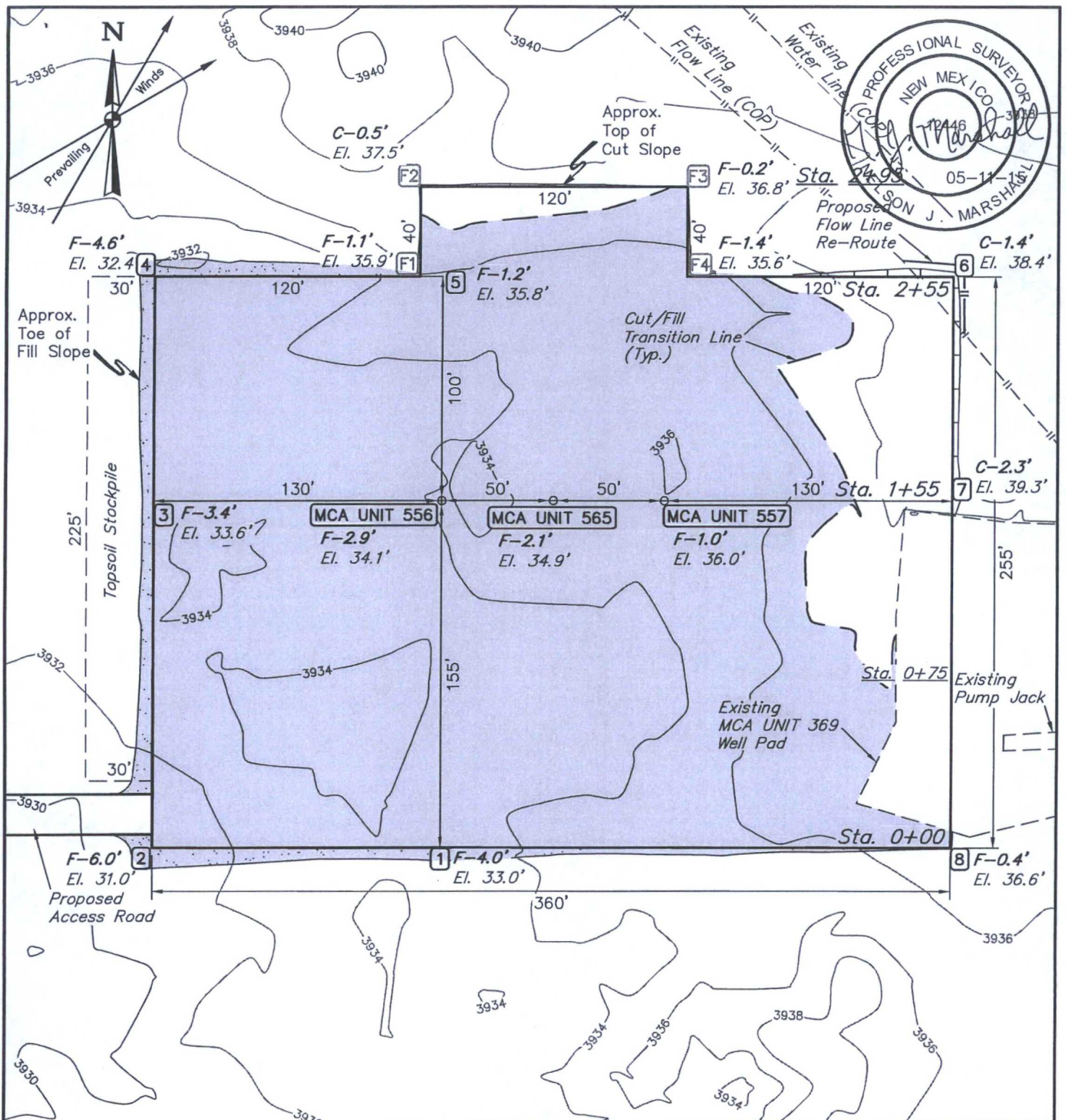
I hereby certify that the well location shown on this plat was plotted from field notes of actual surveys made by me or under my supervision, and that the same is true and correct to the best of my belief.

April 17, 2015

Date of Survey
Signature and Seal of Professional Surveyor:



Certificate Number:



NOTE: Earthwork Calculations Require Fill @ the Location Stakes For Balance. All Fill is to be Compacted to a Minimum of 95% of the Maximum Dry Density Obtained by AASHTO Method t-99.

FINISHED GRADE ELEVATION = 3937.0'

NOTES:

- Contours shown at 2' intervals.
- Underground utilities shown on this sheet are for visualization purposes only, actual locations to be determined prior to construction.

ConocoPhillips Company

MCA UNIT 556, 565 & 557
SECTION 29, T17S, R32E, N.M.P.M.
NW 1/4 NW 1/4
LEA COUNTY, NEW MEXICO



UELS, LLC
Corporate Office * 85 South 200 East
Vernal, UT 84078 * (435) 789-1017

DRAWN BY: B.D.H.

DATE DRAWN: 04-30-15

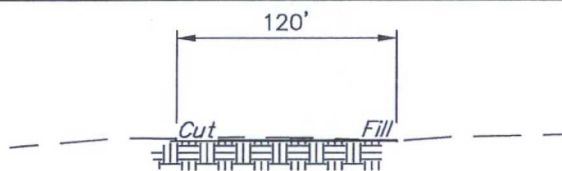
SCALE: 1" = 60'

REVISED: 00-00-00

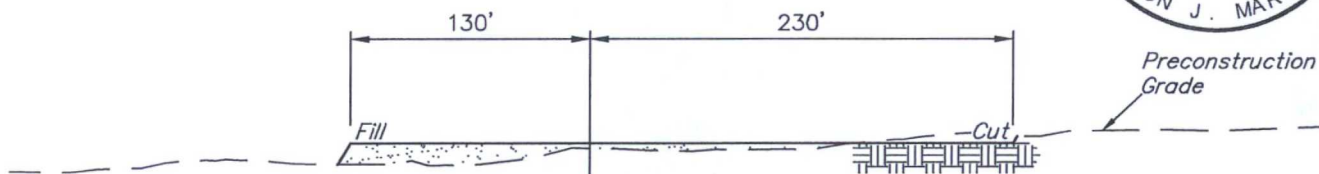
LOCATION LAYOUT

FIGURE #1

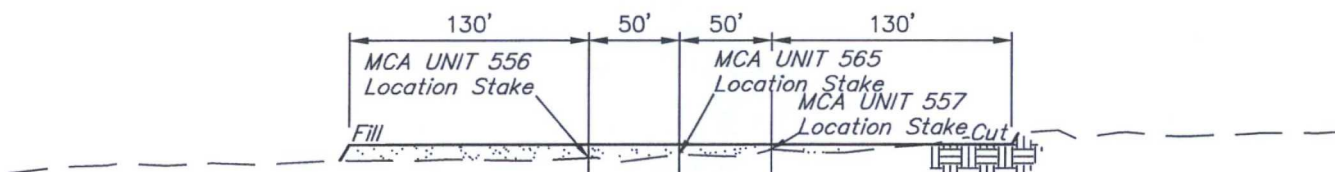
1" = 40'
X-Section
Scale
1" = 100'



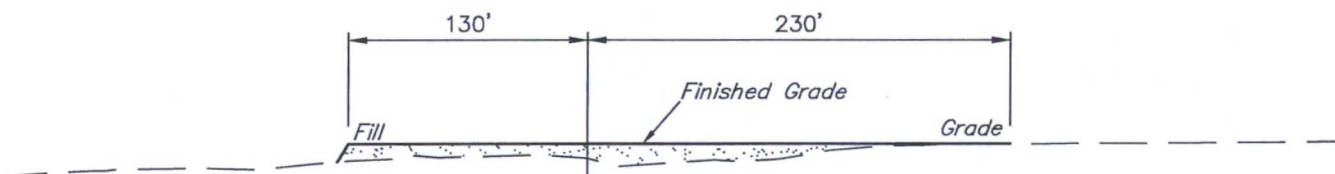
STA. 2+95



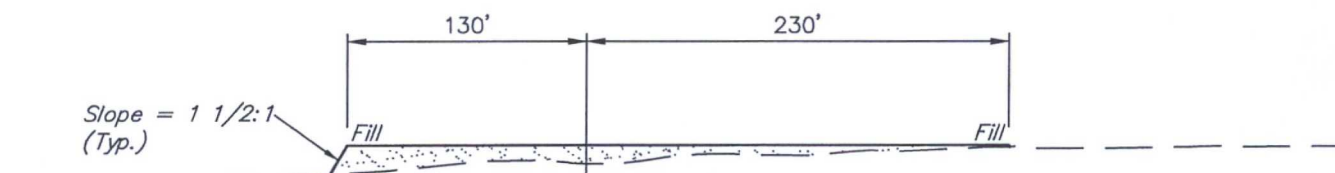
STA. 2+55



STA. 1+55



STA. 0+75



STA. 0+00

APPROXIMATE EARTHWORK QUANTITIES	
(3") TOPSOIL STRIPPING	940 Cu. Yds.
REMAINING LOCATION	240 Cu. Yds.
TOTAL CUT	1180 Cu. Yds.
FILL	9520 Cu. Yds.
DEFICIT MATERIAL	<8340 Cu. Yds.>
TOPSOIL	940 Cu. Yds.
DEFICIT UNBALANCE (After Interim Rehabilitation)	<9280 Cu. Yds.>

APPROXIMATE SURFACE DISTURBANCE AREAS		
	DISTANCE	ACRES
WELL SITE DISTURBANCE	NA	±2.452
30' WIDE ACCESS ROAD R-O-W DISTURBANCE	±265.76'	±0.183
10' WIDE FLOW LINE R-O-W DISTURBANCE	±3775.84'	±0.866
10' WIDE POWER LINE R-O-W DISTURBANCE	±597.66'	±0.137
10' WIDE FLOW LINE RE-ROUTE R-O-W DISTURBANCE	±58.43'	±0.013
TOTAL SURFACE USE AREA		±3.651

NOTES:

- Fill quantity includes 5% for compaction.
- Deficit Material to be obtained from an approved borrow area.

ConocoPhillips Company

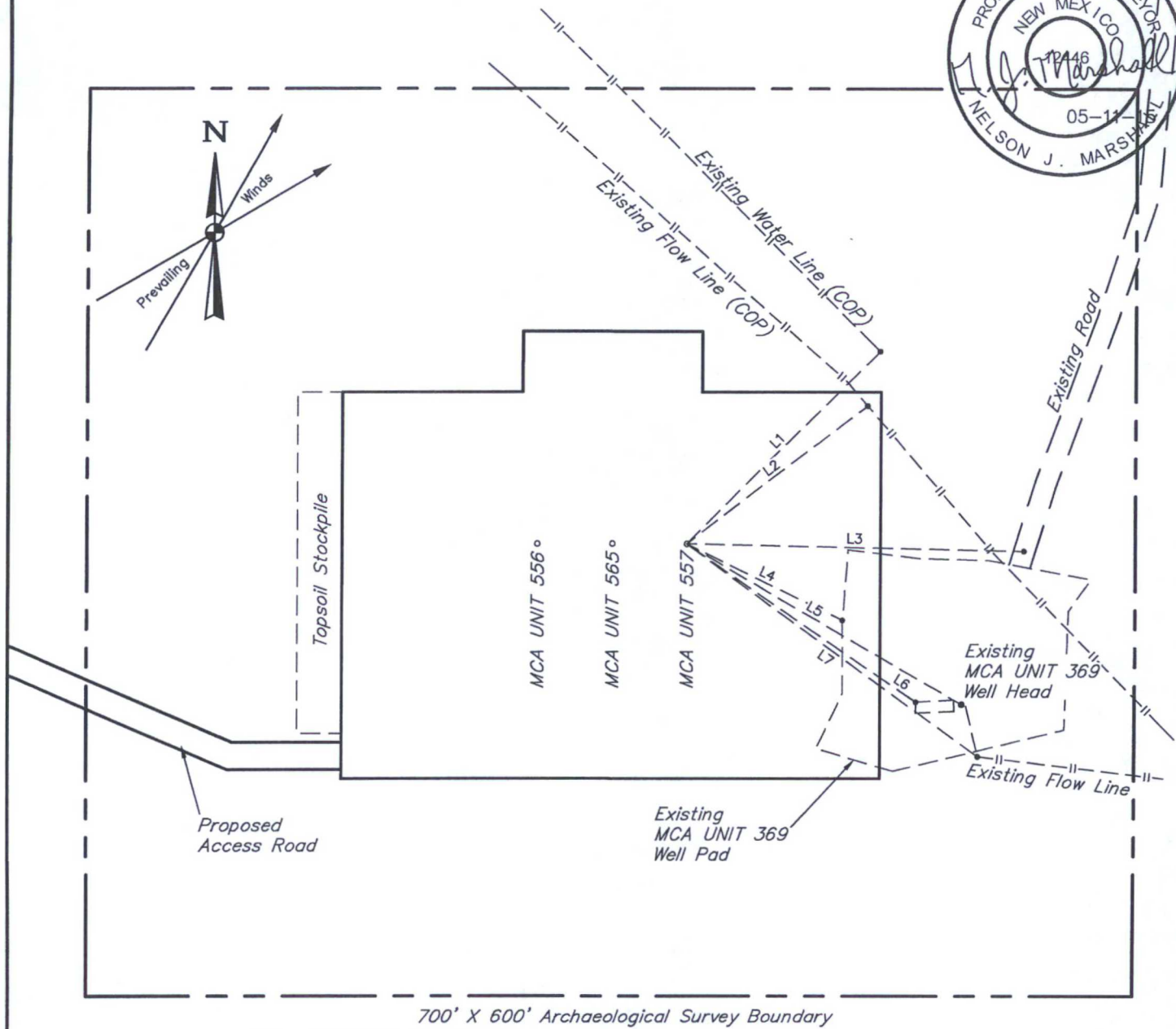
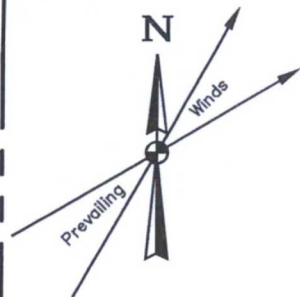
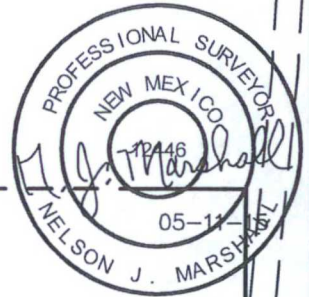
MCA UNIT 556, 565 & 557
SECTION 29, T17S, R32E, N.M.P.M.
NW 1/4 NW 1/4
LEA COUNTY, NEW MEXICO

DRAWN BY: B.D.H.	DATE DRAWN: 04-30-15
SCALE: AS SHOWN	REVISED: 00-00-00

TYPICAL CROSS SECTIONS FIGURE #2



UELS, LLC
Corporate Office * 85 South 200 East
Vernal, UT 84078 * (435) 789-1017



LINE TABLE			LINE TABLE		
LINE	DIRECTION	LENGTH	LINE	DIRECTION	LENGTH
L1	N46°E	181'	L5	S60°E	212'
L2	N53°E	151'	L6	S56°E	186'
L3	S89°E	226'	L7	S54°E	240'
L4	S64°E	116'			

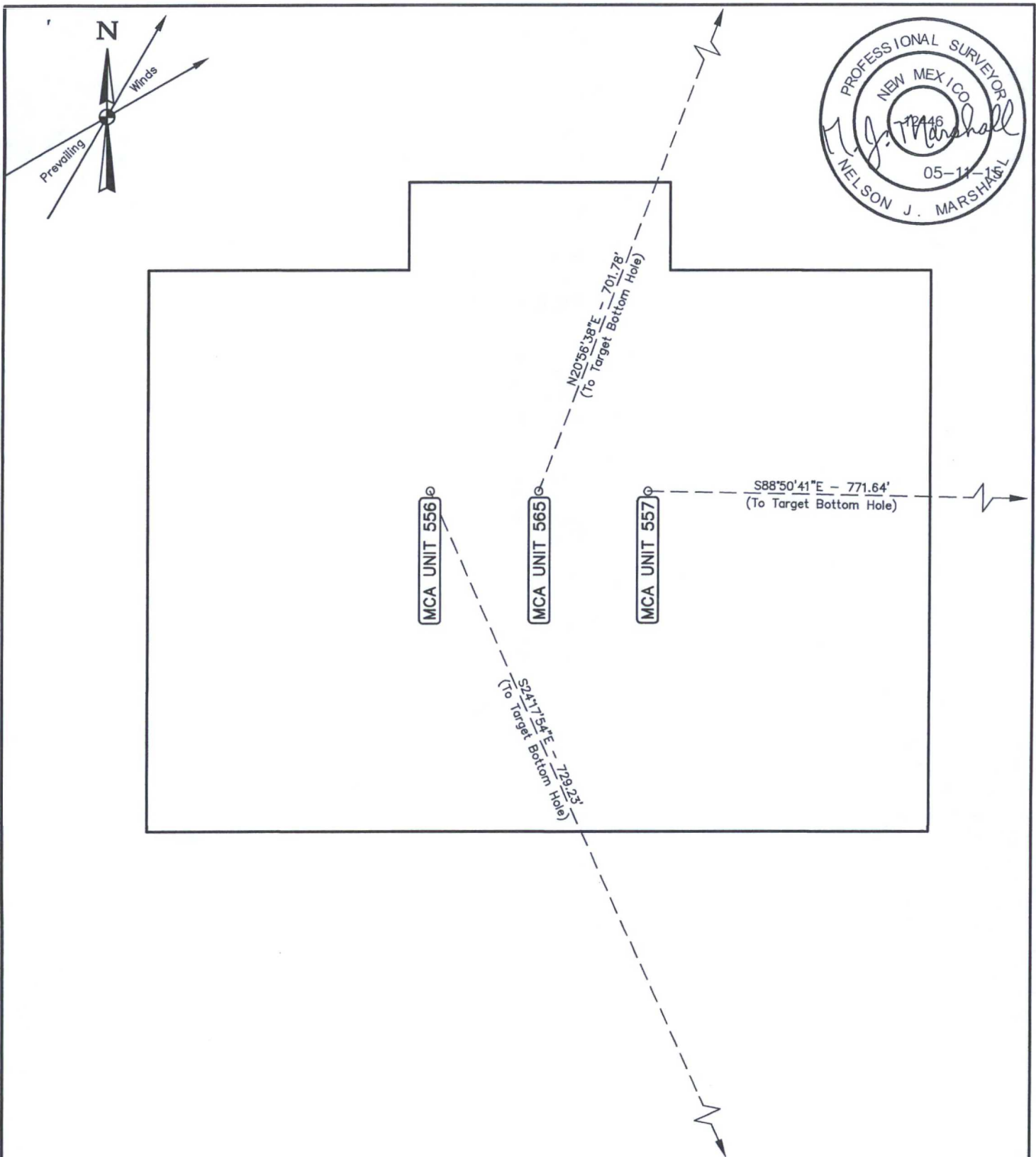
NOTES:

ConocoPhillips Company
MCA UNIT 556, 565 & 557
SECTION 29, T17S, R32E, N.M.P.M.
NW 1/4 NW 1/4
LEA COUNTY, NEW MEXICO



UELS, LLC
 Corporate Office * 85 South 200 East
 Vernal, UT 84078 * (435) 789-1017

DRAWN BY: B.D.H.	DATE DRAWN: 04-30-15
SCALE: 1" = 100'	REVISED: 00-00-00
ARCHAEOLOGICAL SURVEY BOUNDARY	
FIGURE #5	



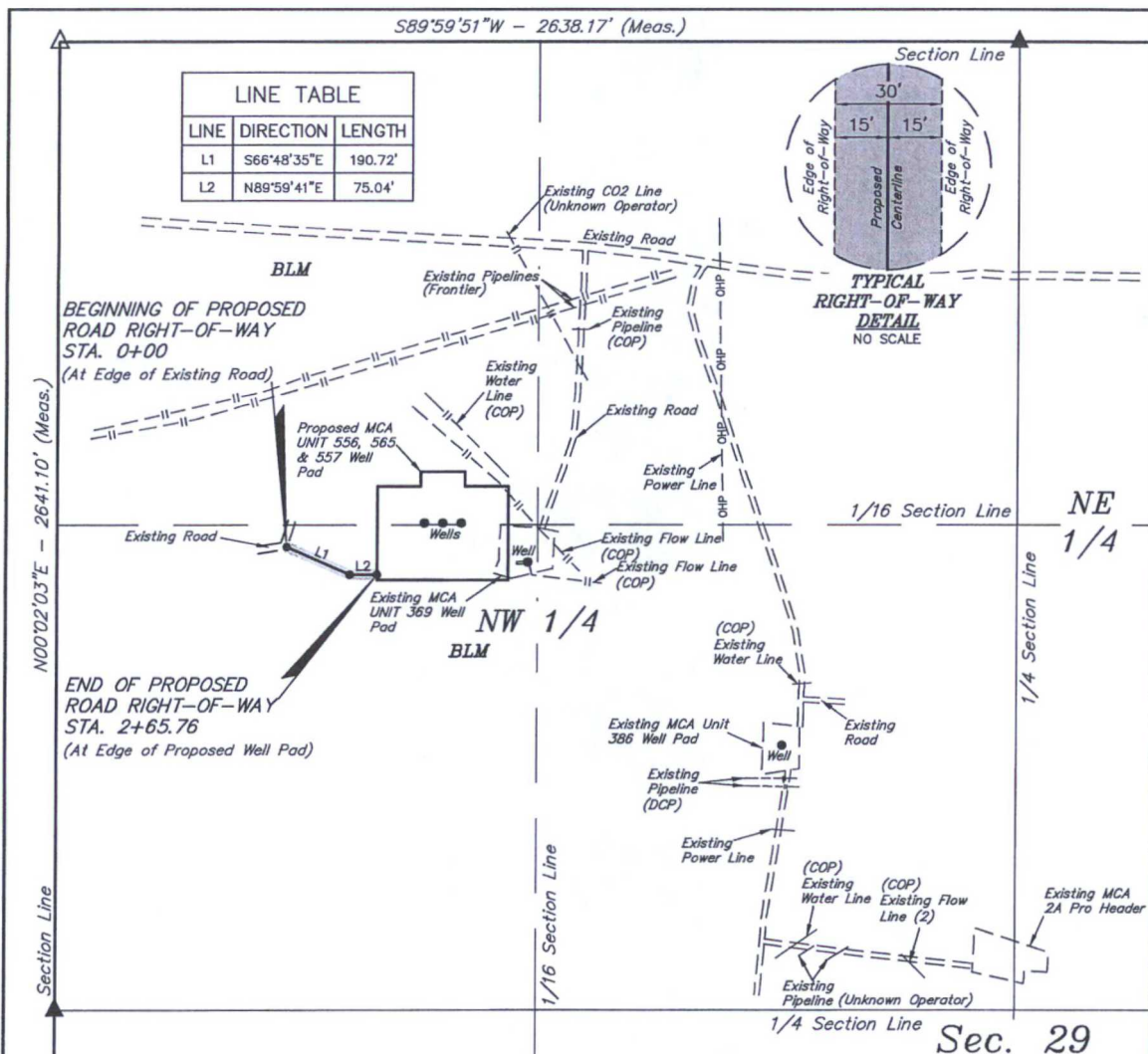
ConocoPhillips Company

**MCA UNIT 556, 565 & 557
SECTION 29, T17S, R32E, N.M.P.M.
NW 1/4 NW 1/4
LEA COUNTY, NEW MEXICO**



UELS, LLC
Corporate Office * 85 South 200 East
Vernal, UT 84078 * (435) 789-1017

DRAWN BY: B.D.H.	DATE DRAWN: 04-30-15
SCALE: 1" = 60'	REVISED: 00-00-00
MULTI-WELL PLAN	
FIGURE #6	



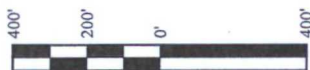
ROAD RIGHT-OF-WAY DESCRIPTION

A 30' WIDE RIGHT-OF-WAY 15' ON EACH SIDE OF THE FOLLOWING DESCRIBED CENTERLINE.

BEGINNING AT A POINT IN THE SW 1/4 NW 1/4 OF SECTION 29, T17S, R32E, N.M.P.M., WHICH BEARS N26°30'28"E 1409.07' FROM THE WEST 1/4 CORNER OF SAID SECTION 29, THENCE S66°48'35"E 190.72'; THENCE N89°59'41"E 75.04' TO A POINT IN THE SW 1/4 NW 1/4 OF SAID SECTION 29, WHICH BEARS N36°33'18"E 1476.24' FROM THE WEST 1/4 CORNER OF SAID SECTION 29. THE SIDE LINES OF SAID DESCRIBED RIGHT-OF-WAY BEING SHORTENED OR ELONGATED TO MEET THE GRANTOR'S PROPERTY LINES. BASIS OF BEARINGS IS A G.P.S. OBSERVATION. CONTAINS 0.183 ACRES MORE OR LESS.

BEGINNING OF ROAD STA. 0+00 BEARS
N26°30'28"E 1409.07' FROM THE WEST 1/4
CORNER OF SECTION 29, T17S, R32E,
N.M.P.M.

END OF ROAD STA. 2+65.76 BEARS
N36°33'18"E 1476.24' FROM THE WEST 1/4
CORNER OF SECTION 29, T17S, R32E,
N.M.P.M.



ACREAGE / LENGTH TABLE

	OWNERSHIP	FEET	RODS	ACRES
(SEC. 29 NW 1/4)	BLM	265.76	16.11	0.183

▲ = SECTION CORNERS LOCATED.

△ = SECTION CORNERS RE-ESTABLISHED.
(Not Set on Ground.)

NOTES:

- The maximum grade of existing ground for the proposed access road is ±1.4%.

CERTIFICATE OF PROFESSIONAL SURVEY

THIS IS TO CERTIFY THAT THE ABOVE PLAT WAS PREPARED FROM FIELD NOTES OF ACTUAL SURVEYS MADE BY ME OR UNDER MY SUPERVISION AND THAT THE SAME ARE TRUE AND CORRECT TO THE BEST OF MY KNOWLEDGE AND BELIEF.

12446
Nelson Marshall
REGISTERED LAND SURVEYOR
REGISTRATION NO. 12446
STATE OF NEW MEXICO MARSHALL
05-11-15

ConocoPhillips Company

MCA UNIT 556, 565 & 557
SECTION 29, T17S, R32E, N.M.P.M.
LEA COUNTY, NEW MEXICO

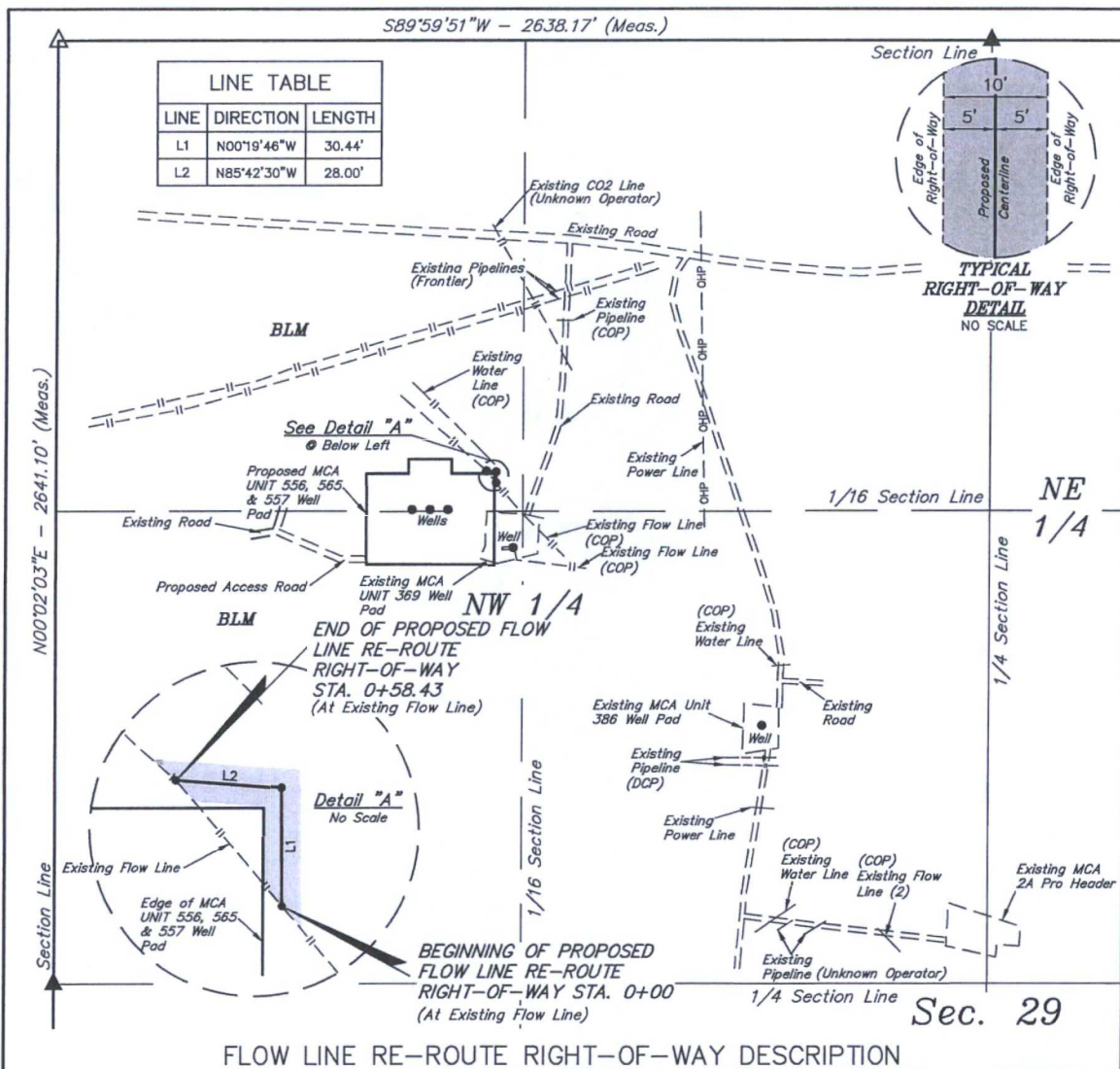
DRAWN BY: B.D.H.	DATE DRAWN: 04-30-15
SCALE: 1" = 400'	REVISED: 00-00-00

ACCESS ROAD R-O-W



UELS, LLC
Corporate Office * 85 South 200 East
Vernal, UT 84078 * (435) 789-1017



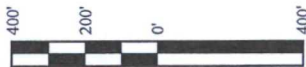


A 10' WIDE RIGHT-OF-WAY 5' ON EACH SIDE OF THE FOLLOWING DESCRIBED CENTERLINE.

BEGINNING AT A POINT IN THE NW 1/4 NW 1/4 OF SECTION 29, T17S, R32E, N.M.P.M., WHICH BEARS N41°37'45"E 1873.36' FROM THE WEST 1/4 CORNER OF SAID SECTION 29, THENCE N00°19'46"W 30.44'; THENCE N85°42'30"W 28.00' TO A POINT IN THE NW 1/4 NW 1/4 OF SAID SECTION 29, WHICH BEARS N40°19'48"E 1879.50' FROM THE WEST 1/4 CORNER OF SAID SECTION 29. THE SIDE LINES OF SAID DESCRIBED RIGHT-OF-WAY BEING SHORTENED OR ELONGATED TO MEET THE GRANTOR'S PROPERTY LINES. BASIS OF BEARINGS IS A G.P.S. OBSERVATION. CONTAINS 0.013 ACRES MORE OR LESS.

BEGINNING OF FLOW LINE RE-ROUTE STA. 0+00 BEARS N41°37'45"E 1873.36' FROM THE WEST 1/4 CORNER OF SECTION 29, T17S, R32E, N.M.P.M.

END OF FLOW LINE RE-ROUTE STA. 0+58.43 BEARS N40°19'48"E 1879.50' FROM THE WEST 1/4 CORNER OF SECTION 29, T17S, R32E, N.M.P.M.



ACREAGE / LENGTH TABLE

	OWNERSHIP	FEET	RODS	ACRES
(SEC. 29 NW 1/4)	BLM	58.43	3.54	0.013

▲ = SECTION CORNERS LOCATED.

△ = SECTION CORNERS RE-ESTABLISHED.
(Not Set on Ground.)

NOTES:

CERTIFICATE OF PROFESSIONAL SURVEY

THIS IS TO CERTIFY THAT THE ABOVE PLAT WAS PREPARED FROM FIELD NOTES OF ACTUAL SURVEYS MADE BY ME OR UNDER MY SUPERVISION AND THAT THE SAME ARE TRUE AND CORRECT TO THE BEST OF MY KNOWLEDGE AND BELIEF.

12446

Robert J. Marshall

REGISTERED LAND SURVEYOR
REGISTRATION NO. 12446
STATE OF NEW MEXICO MARSHALL
05-11-15

ConocoPhillips Company

MCA UNIT 556, 565 & 557
SECTION 29, T17S, R32E, N.M.P.M.
LEA COUNTY, NEW MEXICO

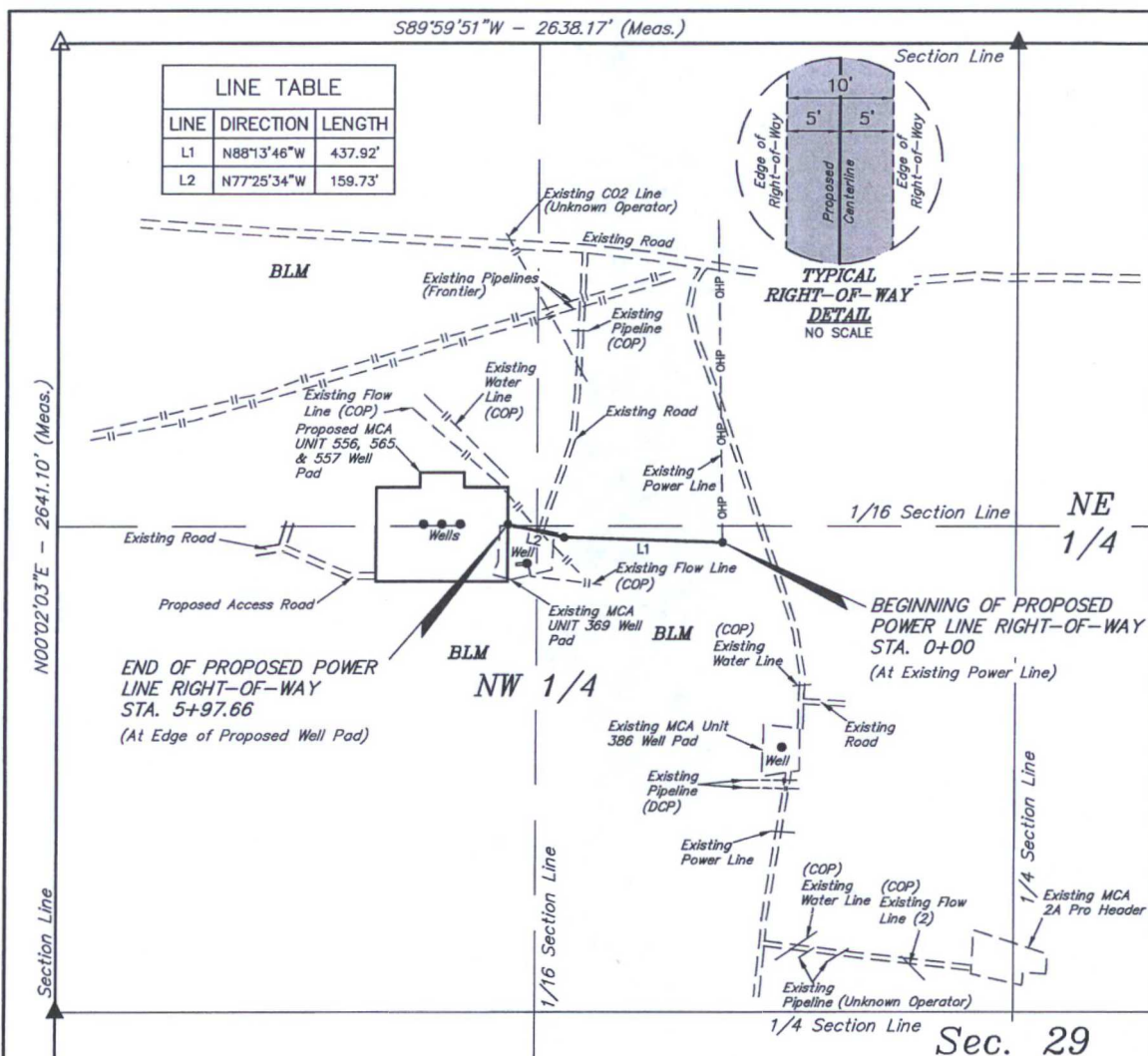
DRAWN BY: B.D.H.	DATE DRAWN: 04-30-15
SCALE: 1" = 400'	REVISED: 00-00-00

FLOW LINE RE-ROUTE R-O-W



UELS, LLC
Corporate Office * 85 South 200 East
Vernal, UT 84078 * (435) 789-1017





POWER LINE RIGHT-OF-WAY DESCRIPTION

A 10' WIDE RIGHT-OF-WAY 5' ON EACH SIDE OF THE FOLLOWING DESCRIBED CENTERLINE.

BEGINNING AT A POINT IN THE SE 1/4 NW 1/4 OF SECTION 29, T17S, R32E, N.M.P.M., WHICH BEARS S30°36'34"W 1584.61' FROM THE NORTH 1/4 CORNER OF SAID SECTION 29, THENCE N88°13'46"W 437.92'; THENCE N77°25'34"W 159.73' TO A POINT IN THE NW 1/4 NW 1/4 OF SAID SECTION 29, WHICH BEARS S43°15'26"E 1806.14" FROM THE NORTHWEST CORNER OF SAID SECTION 29. THE SIDE LINES OF SAID DESCRIBED RIGHT-OF-WAY BEING SHORTENED OR ELONGATED TO MEET THE GRANTOR'S PROPERTY LINES. BASIS OF BEARINGS IS A G.P.S. OBSERVATION. CONTAINS 0.137 ACRES MORE OR LESS.

BEGINNING OF POWER LINE STA. 0+00 BEARS
S30°36'34"W 1584.61' FROM THE NORTH 1/4
CORNER OF SECTION 29, T17S, R32E,
N.M.P.M.

END OF POWER LINE STA. 5+97.66 BEARS
S43°15'26"E 1806.14' FROM THE NORTHWEST
CORNER OF SECTION 29, T17S, R32E,
N.M.P.M.



ACREAGE / LENGTH TABLE

	OWNERSHIP	FEET	RODS	ACRES
(SEC. 29 NW 1/4)	BLM	597.66	36.22	0.137

▲ = SECTION CORNERS LOCATED.

△ = SECTION CORNERS RE-ESTABLISHED.
(Not Set on Ground.)

NOTES:

CERTIFICATE OF PROFESSIONAL SURVEY

THIS IS TO CERTIFY THAT THE ABOVE PLAT WAS PREPARED FROM FIELD NOTES OF ACTUAL SURVEYS MADE BY ME OR UNDER MY SUPERVISION AND THAT THE SAME ARE TRUE AND CORRECT TO THE BEST OF MY KNOWLEDGE AND BELIEF.

REGISTERED LAND SURVEYOR
 REGISTRATION NO. 12446
 STATE OF NEW MEXICO
 05-11-15

ConocoPhillips Company

MCA UNIT 556, 565 & 557
SECTION 29, T17S, R32E, N.M.P.M.
LEA COUNTY, NEW MEXICO

DRAWN BY: B.D.H.	DATE DRAWN: 04-30-15
SCALE: 1" = 400'	REVISED: 00-00-00

POWER LINE R-O-W



UELS, LLC
Corporate Office * 85 South 200 East
Vernal, UT 84078 * (435) 789-1017



BEGINNING AT THE INTERSECTION OF U.S. HIGHWAY 82 AND MALJAMAR ROAD/COUNTY ROAD 126, PROCEED IN A SOUTHERLY DIRECTION FROM MALJAMAR, NEW MEXICO ALONG MALJAMAR ROAD/COUNTY ROAD 126 APPROXIMATELY 3.3 MILES TO THE JUNCTION OF THIS ROAD AND AN EXISTING ROAD TO THE WEST; TURN RIGHT AND PROCEED IN A WESTERLY, THEN NORTHERLY, THEN WESTERLY DIRECTION APPROXIMATELY 2.0 MILES TO THE JUNCTION OF THIS ROAD AND AN EXISTING ROAD TO THE SOUTH; TURN LEFT AND PROCEED IN A SOUTHERLY DIRECTION APPROXIMATELY 0.2 MILES TO THE BEGINNING OF THE PROPOSED ACCESS ROAD TO THE SOUTHEAST; FOLLOW ROAD FLAGS IN A SOUTHEASTERLY, THEN EASTERLY DIRECTION APPROXIMATELY 266' TO THE PROPOSED LOCATION.

TOTAL DISTANCE FROM MALJAMAR, NEW MEXICO TO THE PROPOSED LOCATION IS APPROXIMATELY 5.5 MILES.

ConocoPhillips Company

MCA UNIT 556, 565 & 557
SECTION 29, T17S, R32E, N.M.P.M.
NW 1/4 NW 1/4
LEA COUNTY, NEW MEXICO

DRAWN BY: B.D.

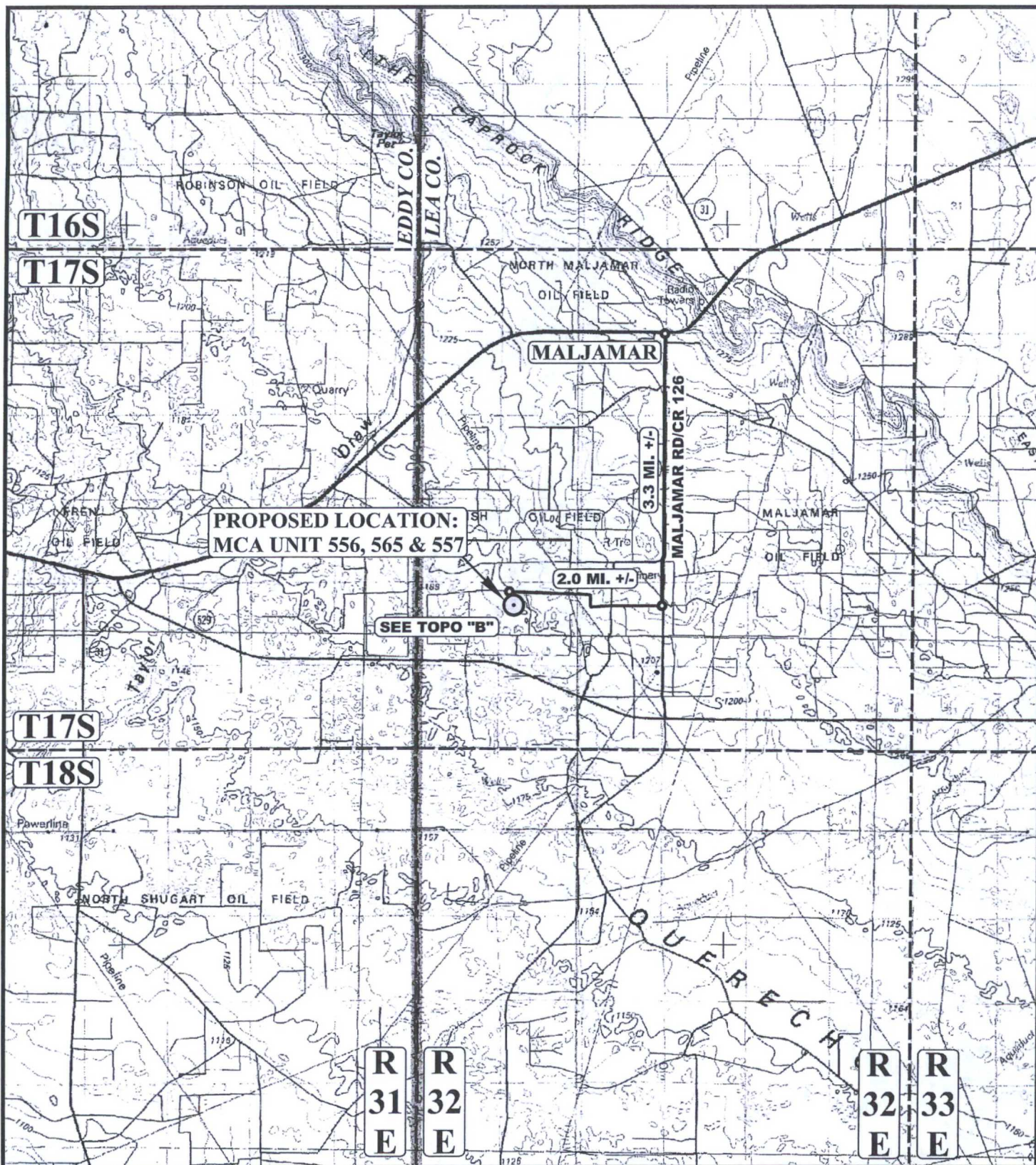
DATE DRAWN: 04-22-15

REVISED: 00-00-00



UELS, LLC
Corporate Office * 85 South 200 East
Vernal, UT 84078 * (435) 789-1017

ROAD DESCRIPTION



LEGEND:

○ PROPOSED LOCATION

ConocoPhillips Company

MCA UNIT 556, 565 & 557
SECTION 29, T17S, R32E, N.M.P.M.
NW 1/4 NW 1/4
LEA COUNTY, NEW MEXICO



UELS, LLC
Corporate Office * 85 South 200 East
Vernal, UT 84078 * (435) 789-1017

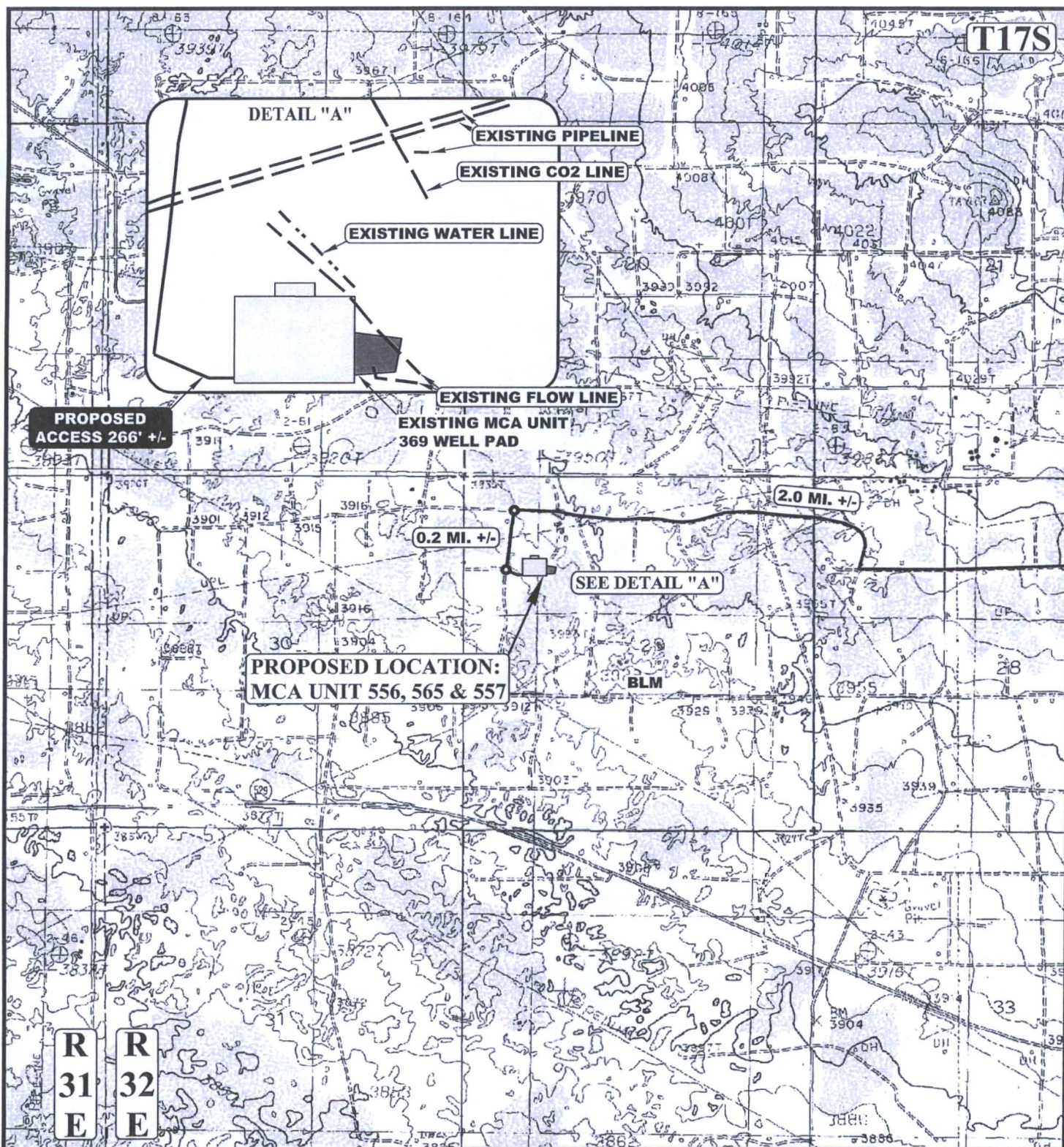


DRAWN BY: B.D.
SCALE: 1:100,000

DATE DRAWN: 04-22-15
REVISED: 00-00-00

ACCESS ROAD MAP

TOPO A



NOTE: PARCEL DATA SHOWN HAS BEEN OBTAINED FROM VARIOUS SOURCES AND SHOULD BE USED FOR MAPPING, GRAPHIC AND PLANNING PURPOSES ONLY. NO WARRANTY IS MADE BY UINAH ENGINEERING AND LAND SURVEYING (UELS) FOR ACCURACY OF THE PARCEL DATA.

LEGEND:

---	EXISTING ROAD
---	PROPOSED ROAD
---	EXISTING POWER LINE
---	EXISTING WATER LINE
---	EXISTING PIPELINE
---	EXISTING FLOW LINE



UELS, LLC
Corporate Office * 85 South 200 East
Vernal, UT 84078 * (435) 789-1017



ConocoPhillips Company

MCA UNIT 556, 565 & 557
SECTION 29, T17S, R32E, N.M.P.M.
NW 1/4 NW 1/4
LEA COUNTY, NEW MEXICO

DRAWN BY: B.D.

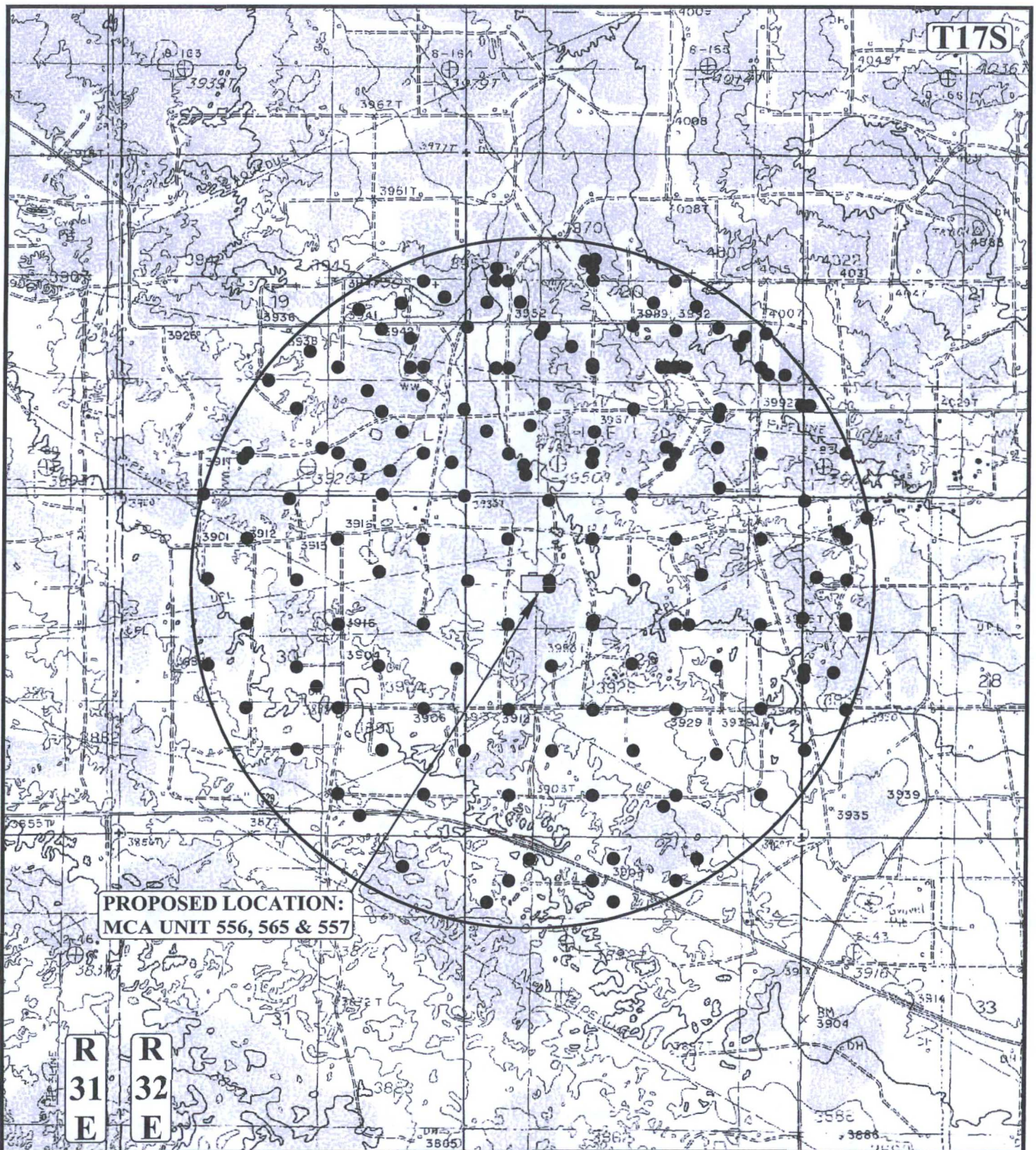
DATE DRAWN: 04-22-15

SCALE: 1" = 2000'

REVISED: 00-00-00

ACCESS ROAD MAP

TOPO B



PROPOSED LOCATION:
MCA UNIT 556, 565 & 557

R
31
E

R
32
E

LEGEND:

- PRODUCING WELLS



UELS, LLC
Corporate Office * 85 South 200 East
Vernal, UT 84078 * (435) 789-1017



ConocoPhillips Company

MCA UNIT 556, 565 & 557
SECTION 29, T17S, R32E, N.M.P.M.
NW 1/4 NW 1/4
LEA COUNTY, NEW MEXICO

DRAWN BY: B.D.

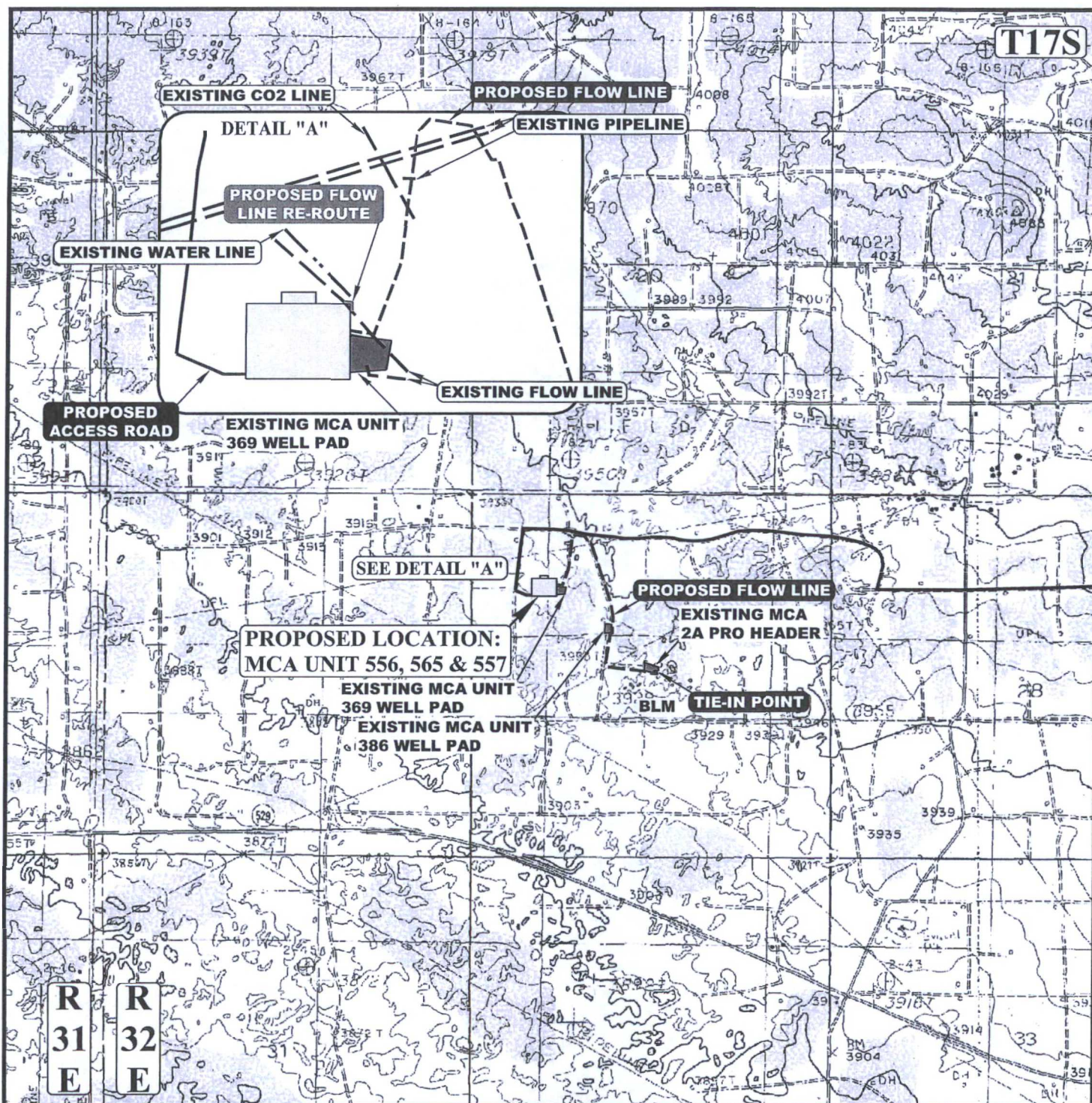
DATE DRAWN: 04-22-15

SCALE: 1" = 2000'

REVISED: 00-00-00

WELL PROXIMITY MAP

TOPO C



APPROXIMATE TOTAL FLOW LINE RE-ROUTE DISTANCE = 58' +/-

APPROXIMATE TOTAL FLOW LINE DISTANCE = 3776' +/-

NOTE: PARCEL DATA SHOWN HAS BEEN OBTAINED FROM VARIOUS SOURCES AND SHOULD BE USED FOR MAPPING, GRAPHIC AND PLANNING PURPOSES ONLY. NO WARRANTY IS MADE BY UINTEH ENGINEERING AND LAND SURVEYING (UELS) FOR ACCURACY OF THE PARCEL DATA.

LEGEND:

---	EXISTING ROAD
---	PROPOSED FLOW LINE
---	PROPOSED FLOW LINE RE-ROUTE
---	PROPOSED ROAD
---	EXISTING POWER LINE
---	EXISTING FLOW LINE
---	EXISTING WATER LINE

ConocoPhillips Company

MCA UNIT 556 & 557
SECTION 29, T17S, R32E, N.M.P.M.
NW 1/4 NW 1/4
LEA COUNTY, NEW MEXICO



DRAWN BY: B.D.

DATE DRAWN: 04-22-15

SCALE: 1" = 2000'

REVISED: 00-00-00

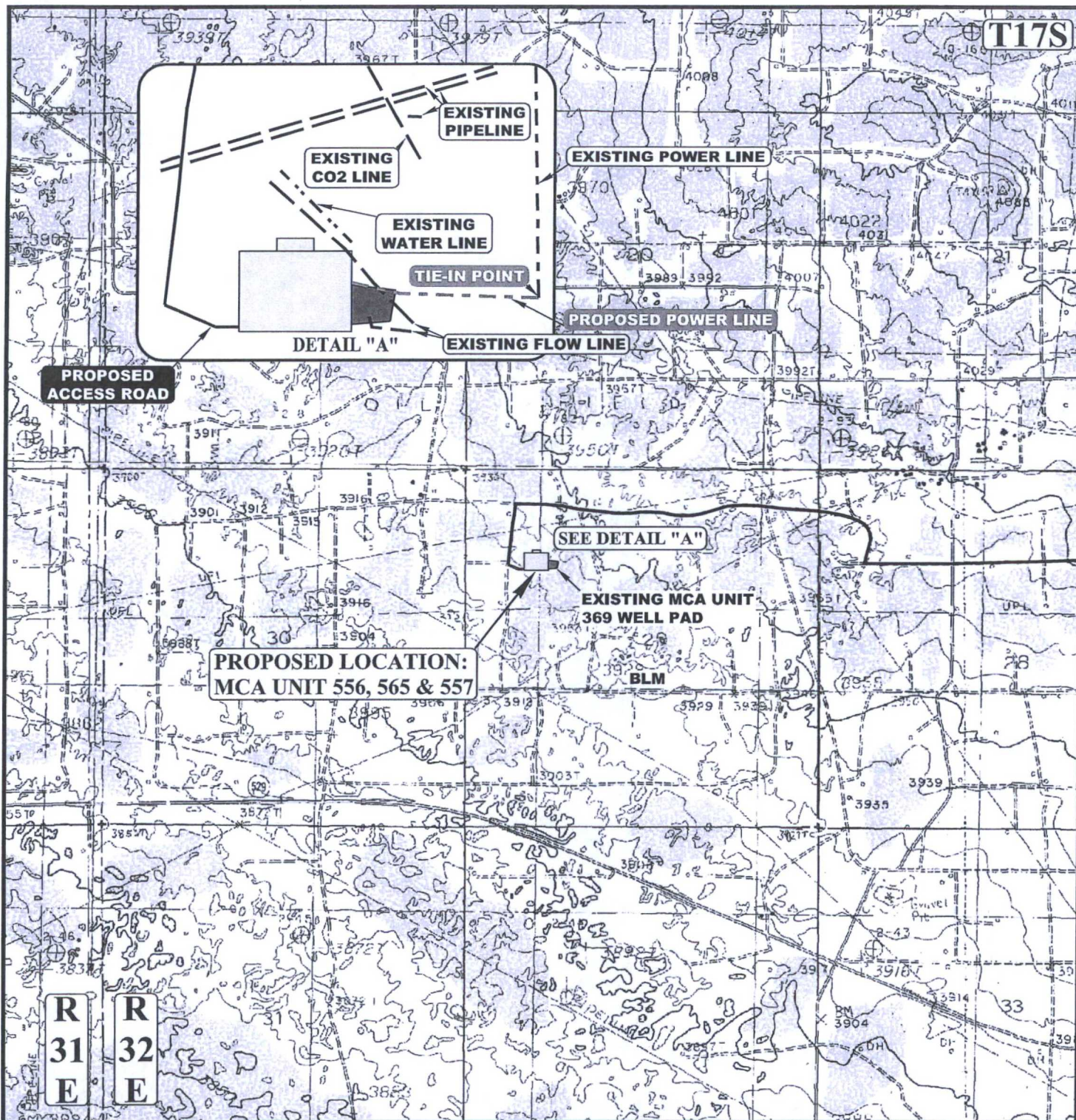
FLOW LINE MAP

TOPO D



UELS, LLC

Corporate Office * 85 South 200 East
Vernal, UT 84078 * (435) 789-1017



APPROXIMATE TOTAL POWER LINE DISTANCE = 598' +/-

NOTE: PARCEL DATA SHOWN HAS BEEN OBTAINED FROM VARIOUS SOURCES AND SHOULD BE USED FOR MAPPING, GRAPHIC AND PLANNING PURPOSES ONLY. NO WARRANTY IS MADE BY UTAH ENGINEERING AND LAND SURVEYING (UELS) FOR ACCURACY OF THE PARCEL DATA.

LEGEND:

- EXISTING ROAD
- PROPOSED ROAD
- PROPOSED POWER LINE
- EXISTING POWER LINE
- EXISTING PIPELINE

ConocoPhillips Company

MCA UNIT 556, 565 & 557
SECTION 29, T17S, R32E, N.M.P.M.
NW 1/4 NW 1/4
LEA COUNTY, NEW MEXICO

DRAWN BY: B.D.

DATE DRAWN: 04-22-15

SCALE: 1" = 2000'

REVISED: 00-00-00

POWER LINE MAP

TOPO E



UELS, LLC
Corporate Office * 85 South 200 East
Vernal, UT 84078 * (435) 789-1017



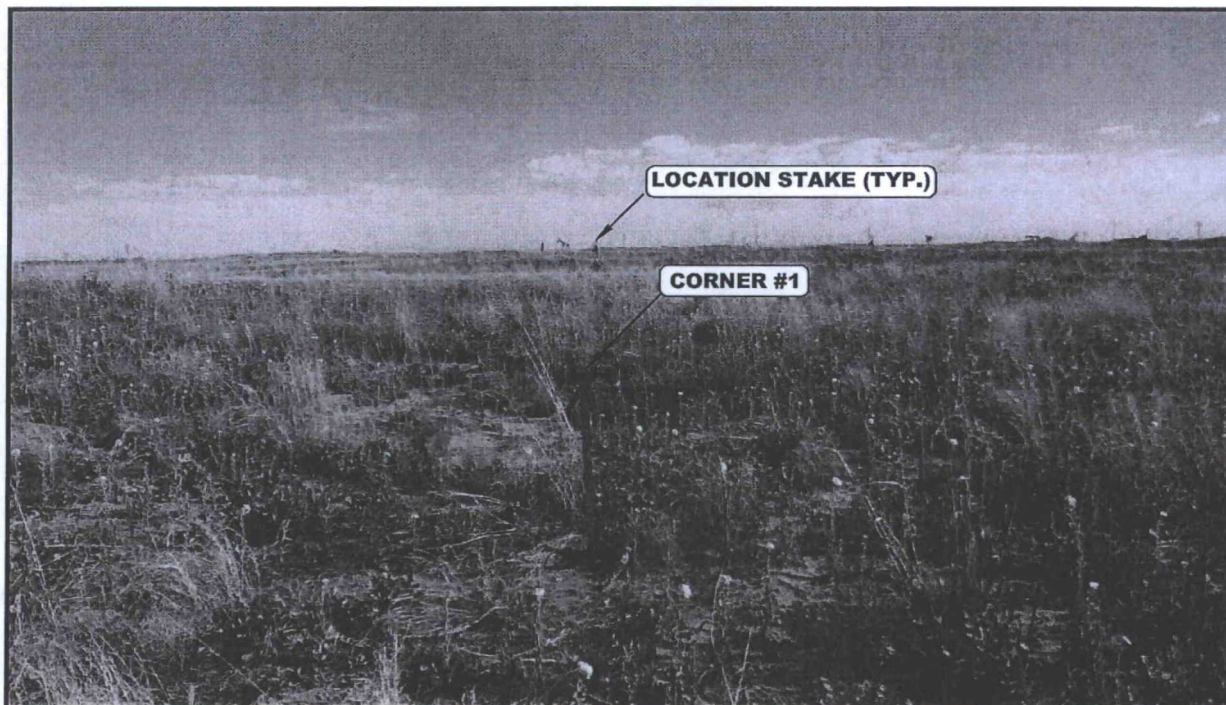


PHOTO: VIEW FROM CORNER #1 TO LOCATION STAKE

CAMERA ANGLE: NORTHERLY

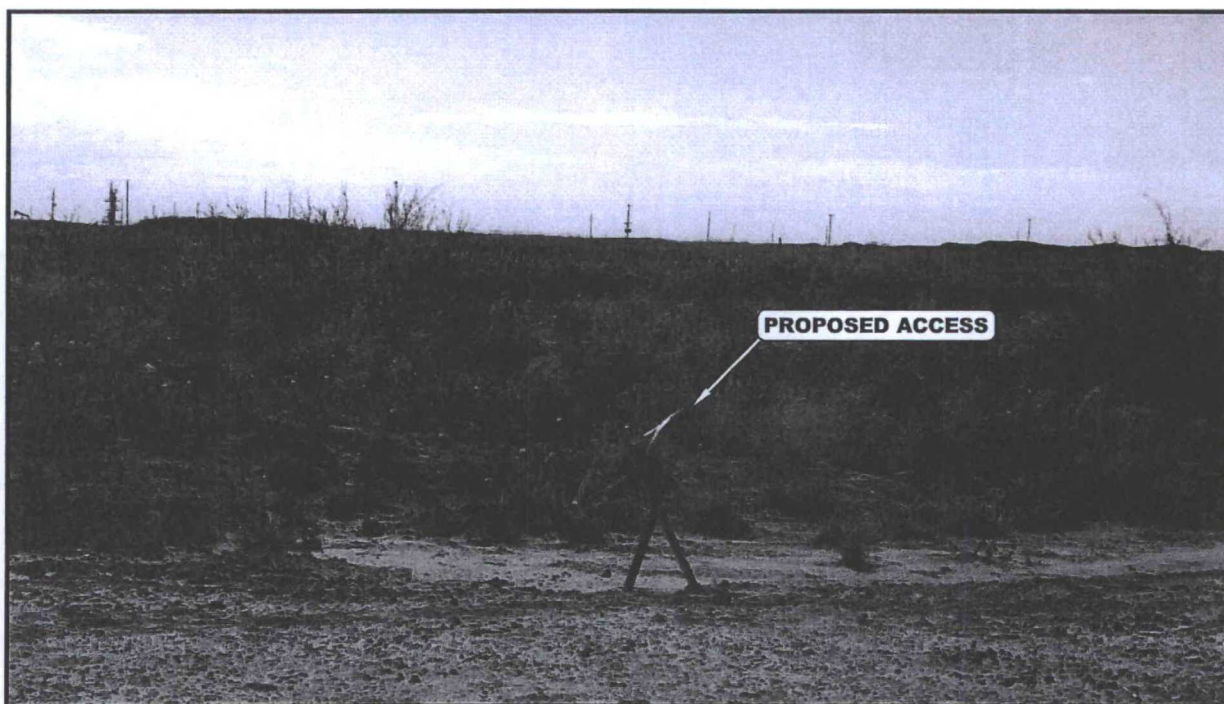


PHOTO: VIEW FROM BEGINNING OF PROPOSED ACCESS

CAMERA ANGLE: SOUTHEASTERLY

ConocoPhillips Company

MCA UNIT 556, 565 & 557
SECTION 29, T17S, R32E, N.M.P.M.
NW 1/4 NW 1/4
LEA COUNTY, NEW MEXICO

DRAWN BY: B.D.

DATE DRAWN: 04-22-15

TAKEN BY: J.V.

REVISED: 00-00-00

LOCATION PHOTOS

PHOTO



UELS, LLC

Corporate Office * 85 South 200 East
Vernal, UT 84078 * (435) 789-1017