

District I  
1625 N. French Dr., Hobbs, NM 88240  
Phone: (575) 393-6161 Fax: (575) 393-0720  
District II  
811 S. First St., Artesia, NM 88210  
Phone: (575) 748-1283 Fax: (575) 748-9720  
District III  
1000 Rio Brazos Road, Aztec, NM 87410  
Phone: (505) 334-6178 Fax: (505) 334-6170  
District IV  
1220 S. St. Francis Dr., Santa Fe, NM 87505  
Phone: (505) 476-3460 Fax: (505) 476-3462

State of New Mexico  
Energy, Minerals & Natural Resources Department  
OIL CONSERVATION DIVISION  
1220 South St. Francis Dr.  
Santa Fe, NM 87505

Form C-102  
Revised August 1, 2011  
Submit one copy to appropriate  
District Office

☐ AMENDED REPORT

JUL 20 2016

RECEIVED

WELL LOCATION AND ACREAGE DEDICATION PLAT

|   |  |   |
|---|--|---|
| <sup>1</sup> API Number<br>30-025- <b>43370</b> | <sup>2</sup> Pool Code<br>44500                      | <sup>3</sup> Pool Name<br>Maljamar, Yeso West |
| <sup>4</sup> Property Code<br>38653             | <sup>5</sup> Property Name<br>RUBY FEDERAL           | <sup>6</sup> Well Number<br>100H              |
| <sup>7</sup> OGRID No.<br>217817                | <sup>8</sup> Operator Name<br>ConocoPhillips Company | <sup>9</sup> Elevation<br>3979.4'             |

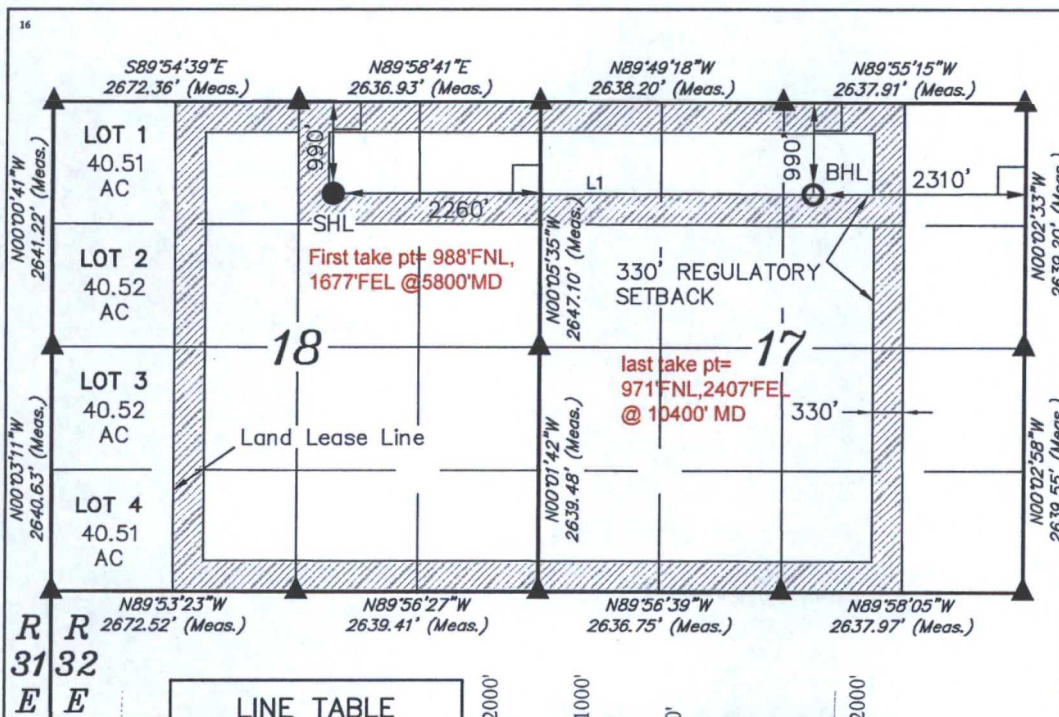
<sup>10</sup> Surface Location

| UL or lot no. | Section | Township | Range | Lot Idn | Feet from the | North/South line | Feet from the | East/West line | County |
|---------------|---------|----------|-------|---------|---------------|------------------|---------------|----------------|--------|
| B             | 18      | 17S      | 32E   |         | 990           | NORTH            | 2260          | EAST           | LEA    |

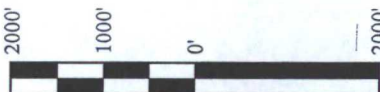
<sup>11</sup> Bottom Hole Location If Different From Surface

| UL or lot no.                        | Section                       | Township                         | Range                   | Lot Idn | Feet from the | North/South line | Feet from the | East/West line | County |
|--------------------------------------|-------------------------------|----------------------------------|-------------------------|---------|---------------|------------------|---------------|----------------|--------|
| B                                    | 17                            | 17S                              | 32E                     |         | 990           | NORTH            | 2310          | EAST           | LEA    |
| <sup>12</sup> Dedicated Acres<br>200 | <sup>13</sup> Joint or Infill | <sup>14</sup> Consolidation Code | <sup>15</sup> Order No. |         |               |                  |               |                |        |

No allowable will be assigned to this completion until all interests have been consolidated or a non-standard unit has been approved by the division.



| LINE TABLE |             |          |
|------------|-------------|----------|
| LINE       | DIRECTION   | LENGTH   |
| L1         | S89°54'57"E | 5225.22' |



SCALE  
DRAWN BY: T.E. 04-16-15

|  |  |
|--|--|
| <b>NAD 83 (SURFACE LOCATION)</b>       | <b>NAD 83 (BOTTOM HOLE)</b>            |
| LATITUDE = 32°50'21.18" (32.839217)    | LATITUDE = 32°50'21.11" (32.839197)    |
| LONGITUDE = 103°48'16.46" (103.804572) | LONGITUDE = 103°47'15.24" (103.787567) |
| <b>NAD 27 (SURFACE LOCATION)</b>       | <b>NAD 27 (BOTTOM HOLE)</b>            |
| LATITUDE = 32°50'20.75" (32.839097)    | LATITUDE = 32°50'20.68" (32.839078)    |
| LONGITUDE = 103°48'14.64" (103.804067) | LONGITUDE = 103°47'13.42" (103.787061) |
| <b>STATE PLANE NAD 83 (N.M. EAST)</b>  | <b>STATE PLANE NAD 83 (N.M. EAST)</b>  |
| N: 669446.63 E: 703737.18              | N: 669466.00 E: 708961.08              |
| <b>STATE PLANE NAD 27 (N.M. EAST)</b>  | <b>STATE PLANE NAD 27 (N.M. EAST)</b>  |
| N: 669382.38 E: 662558.79              | N: 669401.70 E: 667782.75              |

▲ = SECTION CORNERS LOCATED.

<sup>17</sup> OPERATOR  
CERTIFICATION

I hereby certify that the information contained herein is true and complete to the best of my knowledge and belief, and that this organization either owns a working interest or unleased mineral interest in the land including the proposed bottom hole location or has a right to drill this well at this location pursuant to a contract with an owner of such a mineral or working interest, or to a voluntary pooling agreement or a compulsory pooling order heretofore entered by the division.

*Susan B. Maunder* 9/20/15  
Signature Date

Susan B. Maunder  
Printed Name

Susan.B.Maunder@cop.com  
E-mail Address

<sup>18</sup> SURVEYOR  
CERTIFICATION

I hereby certify that the well location shown on this plat was plotted from field notes of actual surveys made by me or under my supervision, and that the same is true and correct to the best of my belief.

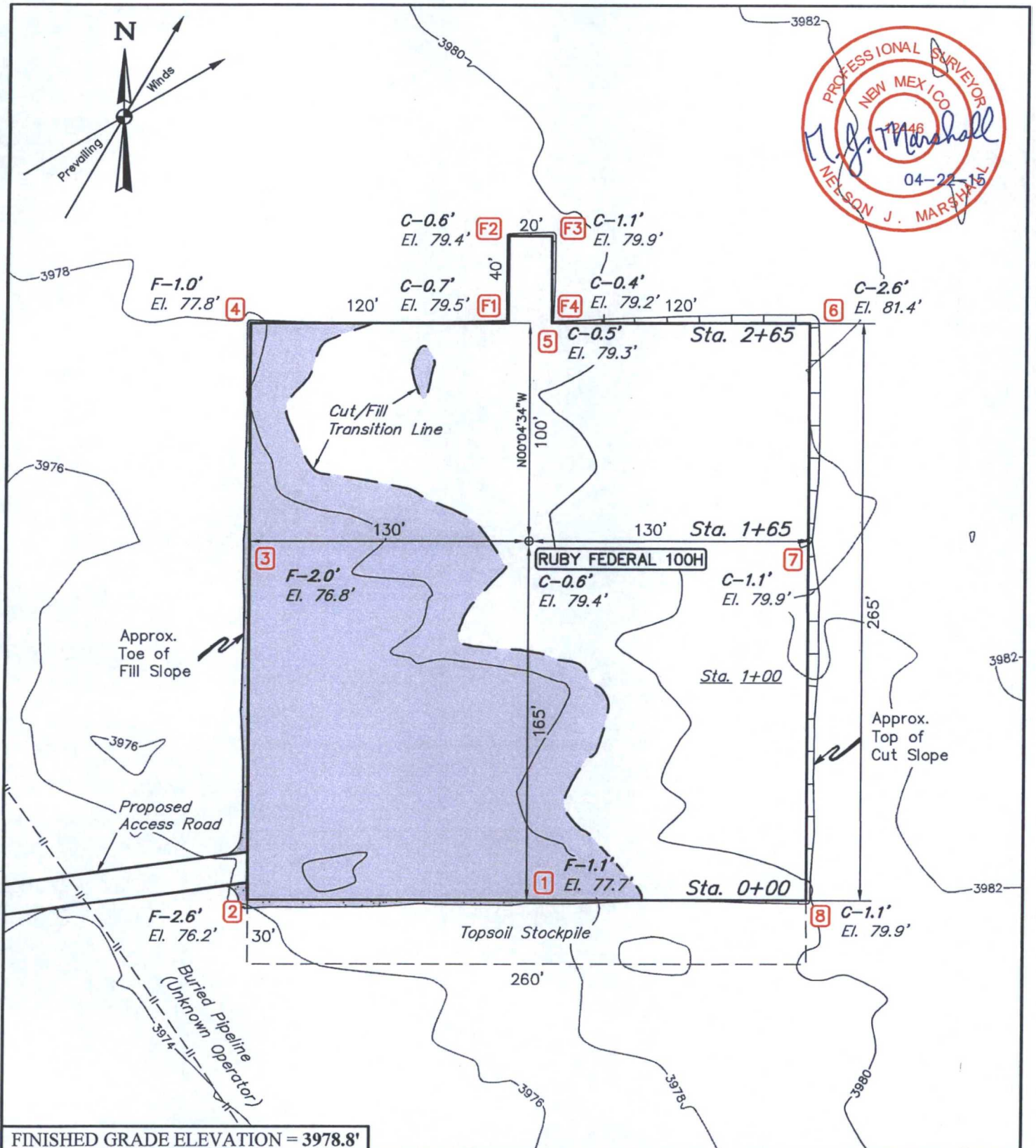
April 06, 2015

Date of Survey  
Signature and Seal of Professional Surveyor:



Certificate Number:





#### NOTES:

- Flare pit is to be located a min. of 100' from the wellhead.
- Contours shown at 2' intervals.

**ConocoPhillips Company**

**RUBY FEDERAL 100H**  
**SECTION 18, T17S, R32E, N.M.P.M.**  
**990' FNL 2260' FEL**  
**LEA COUNTY, NEW MEXICO**

DRAWN BY: T.E.

DATE DRAWN: 04-17-15

SCALE: 1" = 60'

REVISED: 00-00-00

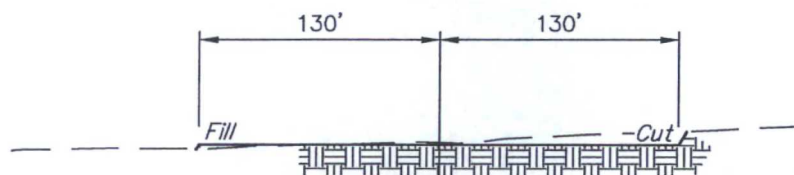
**LOCATION LAYOUT**

**FIGURE #1**

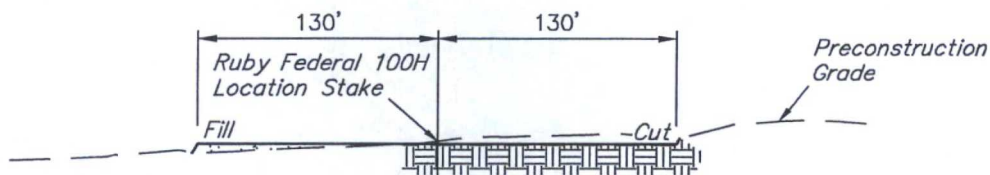


**UELS, LLC**  
 Corporate Office \* 85 South 200 East  
 Vernal, UT 84078 \* (435) 789-1017

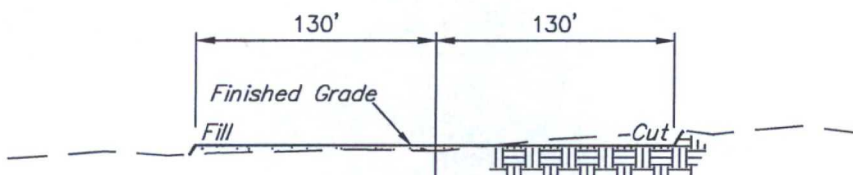
1" = 40'  
X-Section  
Scale  
1" = 100'



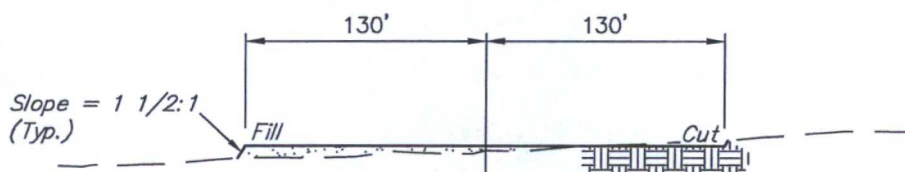
STA. 2+65



STA. 1+65



STA. 1+00



STA. 0+00

#### APPROXIMATE EARTHWORK QUANTITIES

|   |                       |
|---|-----------------------|
| (3") TOPSOIL STRIPPING                                    | 670 Cu. Yds.          |
| REMAINING LOCATION  | 1,640 Cu. Yds.        |
| <b>TOTAL CUT</b>  | <b>2,310 Cu. Yds.</b> |
| <b>FILL</b>   | <b>1,640 Cu. Yds.</b> |
| EXCESS MATERIAL   | 670 Cu. Yds.          |
| TOPSOIL   | 670 Cu. Yds.          |
| <b>EXCESS UNBALANCE</b><br>(After Interim Rehabilitation) | <b>0 Cu. Yds.</b>     |

#### APPROXIMATE SURFACE DISTURBANCE AREAS

|  | DISTANCE   | ACRES         |
|--|------------|---------------|
| WELL SITE DISTURBANCE                  | NA         | ±1.831        |
| 30' WIDE ACCESS ROAD R-O-W DISTURBANCE | ±639.93'   | ±0.440        |
| 10' WIDE FLOW LINE R-O-W DISTURBANCE   | ±10923.43' | ±2.507        |
| 10' WIDE POWER LINE R-O-W DISTURBANCE  | ±772.96'   | ±0.178        |
| <b>TOTAL SURFACE USE AREA</b>          |            | <b>±4.956</b> |

#### NOTES:

- Fill quantity includes 5% for compaction.
- Calculations based on 3" of topsoil stripping.
- Topsoil should not be stripped below finished grade on substructure area.

#### ConocoPhillips Company

**RUBY FEDERAL 100H**  
**SECTION 18, T17S, R32E, N.M.P.M.**  
**990' FNL 2260' FEL**  
**LEA COUNTY, NEW MEXICO**

DRAWN BY: T.E.

DATE DRAWN: 04-17-15

SCALE: AS SHOWN

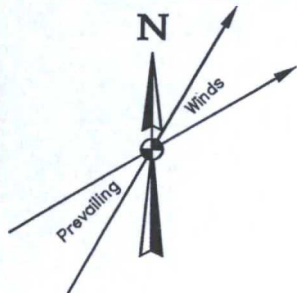
REVISED: 00-00-00

**TYPICAL CROSS SECTIONS** **FIGURE #2**



**UELS, LLC**  
Corporate Office \* 85 South 200 East  
Vernal, UT 84078 \* (435) 789-1017





600' X 600' Archaeological Survey Boundary

| LINE TABLE |             |         |
|------------|-------------|---------|
| LINE       | DIRECTION   | LENGTH  |
| L1         | N00°19'20"E | 285.04' |
| L2         | N00°59'46"E | 278.64' |
| L3         | S54°56'54"W | 263.38' |

Surface Flow Line  
(ConocoPhillips Company)

L1  
L2

Well Head

Buried Pipeline  
(Unknown Operator)

Proposed  
Access Road

Topsoil Stockpile

**NOTES:**

**ConocoPhillips Company**

**RUBY FEDERAL 100H  
SECTION 18, T17S, R32E, N.M.P.M.  
990' FNL 2260' FEL  
LEA COUNTY, NEW MEXICO**

DRAWN BY: T.E.

DATE DRAWN: 04-17-15

SCALE: 1" = 100'

REVISED: 00-00-00

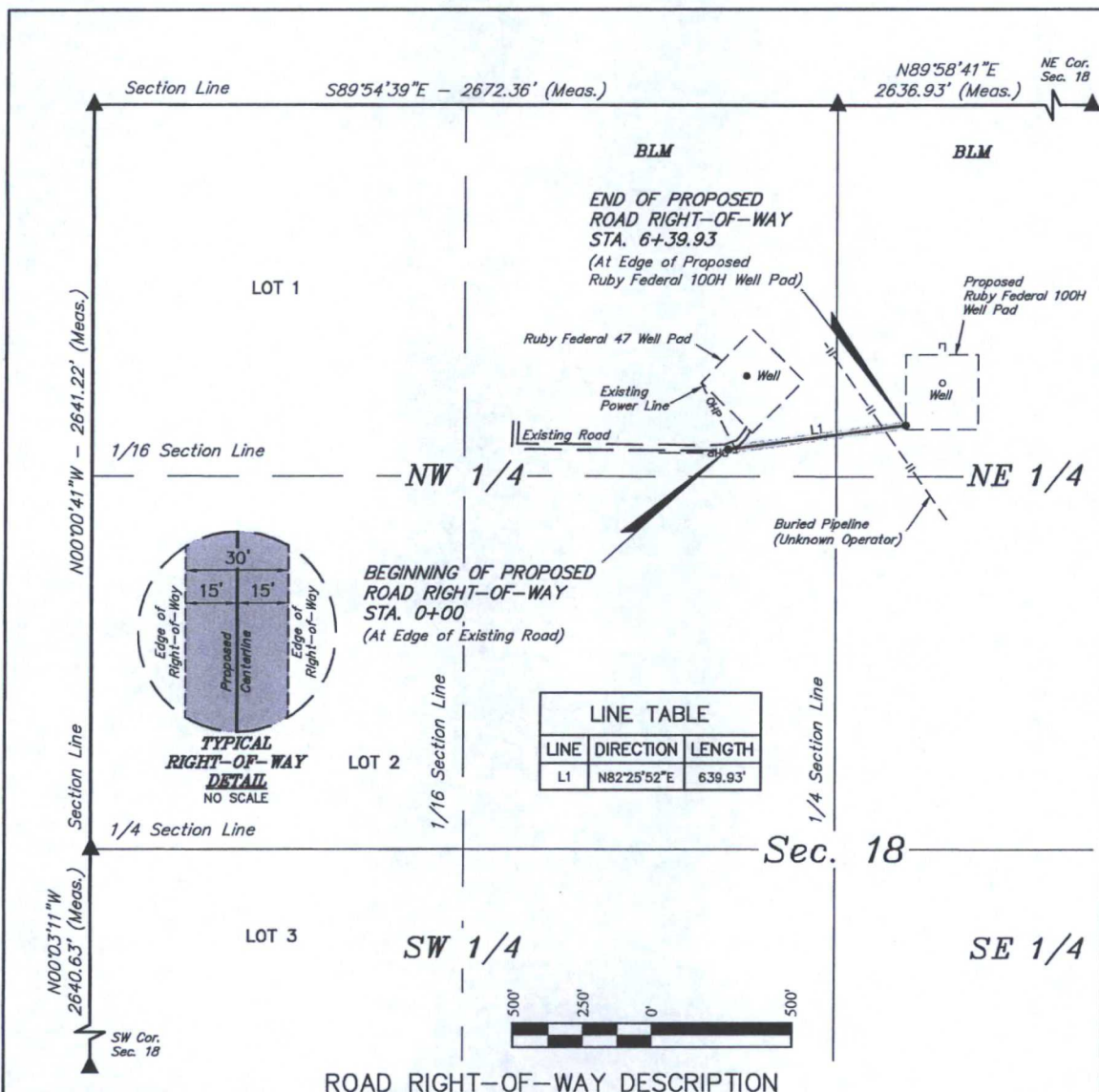
ARCHAEOLOGICAL SURVEY BOUNDARY

**FIGURE #5**



**UELS, LLC**  
Corporate Office \* 85 South 200 East  
Vernal, UT 84078 \* (435) 789-1017





### ROAD RIGHT-OF-WAY DESCRIPTION

A 30' WIDE RIGHT-OF-WAY 15' ON EACH SIDE OF THE FOLLOWING DESCRIBED CENTERLINE.

BEGINNING AT A POINT IN THE NE 1/4 NW 1/4 OF SECTION 18, T17S, R32E, N.M.P.M., WHICH BEARS S17°28'50\"W 1283.77' FROM THE NORTH 1/4 CORNER OF SAID SECTION 18, THENCE N82°25'52\"E 639.93' TO A POINT IN THE NW 1/4 NE 1/4 OF SAID SECTION 18, WHICH BEARS S12°18'23\"E 1167.01' FROM THE NORTH 1/4 CORNER OF SAID SECTION 18. THE SIDE LINES OF SAID DESCRIBED RIGHT-OF-WAY BEING SHORTENED OR ELONGATED TO MEET THE GRANTOR'S PROPERTY LINES. BASIS OF BEARINGS IS A G.P.S. OBSERVATION. CONTAINS 0.440 ACRES MORE OR LESS.

BEGINNING OF ROAD STA. 0+00 BEARS S17°28'50\"W 1283.77' FROM THE NORTH 1/4 CORNER OF SECTION 18, T17S, R32E, N.M.P.M.

END OF ROAD STA. 6+39.93 BEARS S12°18'23\"E 1167.01' FROM THE NORTH 1/4 CORNER OF SECTION 18, T17S, R32E, N.M.P.M.

| RIGHT-OF-WAY LENGTHS |        |       |       |
|----------------------|--------|-------|-------|
| PROPERTY OWNER       | FEET   | RODS  | ACRES |
| NE 1/4 SEC 18 BLM    | 250.22 | 15.16 | 0.172 |
| NW 1/4 SEC 18 BLM    | 389.71 | 23.62 | 0.268 |
| TOTAL ON BLM         | 639.93 | 38.78 | 0.440 |

▲ = SECTION CORNERS LOCATED.

#### NOTES:

- The maximum grade of existing ground for the proposed access road is  $\pm 1\%$ .

CERTIFICATE OF PROFESSIONAL SURVEY  
THIS IS TO CERTIFY THAT THE ABOVE PLAT WAS PREPARED FROM FIELD NOTES OF ACTUAL SURVEYS MADE BY ME OR UNDER MY SUPERVISION AND THAT THE SAME ARE TRUE AND CORRECT TO THE BEST OF MY KNOWLEDGE AND BELIEF.  
*Robert J. Marshall*  
REGISTERED LAND SURVEYOR  
REGISTRATION NO. 12446  
STATE OF NEW MEXICO  
04-22-15

### ConocoPhillips Company

RUBY FEDERAL 100H  
SECTION 18, T17S, R32E, N.M.P.M.  
LEA COUNTY, NEW MEXICO

|                  |                      |
|------------------|----------------------|
| DRAWN BY: T.E.   | DATE DRAWN: 04-17-15 |
| SCALE: 1" = 500' | REVISED: 00-00-00    |

### ACCESS ROAD R-O-W



UELS, LLC  
Corporate Office \* 85 South 200 East  
Vernal, UT 84078 \* (435) 789-1017









BEGINNING AT THE INTERSECTION OF U.S. HIGHWAY 82 AND MALJAMAR ROAD/COUNTY ROAD 126, PROCEED IN A WESTERLY, THEN SOUTHWESTERLY DIRECTION FROM MALJAMAR, NEW MEXICO ALONG U.S. HIGHWAY 82 APPROXIMATELY 3.3 MILES TO THE JUNCTION OF THIS ROAD AND AN EXISTING ROAD TO THE SOUTH; TURN LEFT AND PROCEED IN A SOUTHERLY, THEN EASTERLY, THEN SOUTHERLY, THEN EASTERLY DIRECTION APPROXIMATELY 0.7 MILES TO THE BEGINNING OF THE PROPOSED ACCESS ROAD TO THE EAST; FOLLOW ROAD FLAGS IN AN EASTERLY DIRECTION APPROXIMATELY 640' TO THE PROPOSED LOCATION.

TOTAL DISTANCE FROM MALJAMAR, NEW MEXICO TO THE PROPOSED LOCATION IS APPROXIMATELY 4.1 MILES.

**ConocoPhillips Company**

RUBY FEDERAL 100H  
SECTION 18, T17S, R32E, N.M.P.M.  
990' FNL 2600' FEL  
LEA COUNTY, NEW MEXICO

DRAWN BY: B.D.

DATE DRAWN: 04-15-15

REVISED: 00-00-00

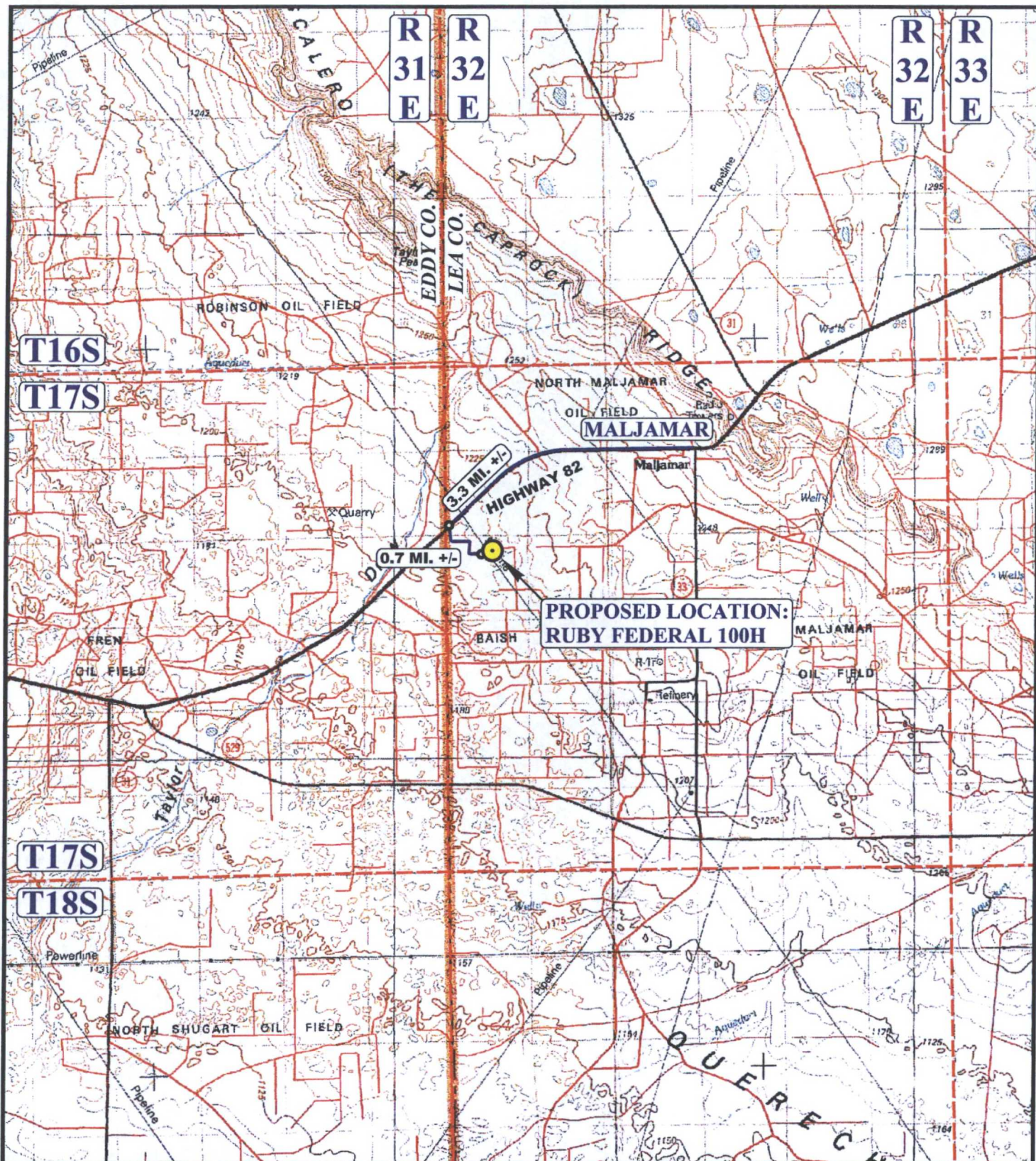
**ROAD DESCRIPTION**



**UELS, LLC**

Corporate Office \* 85 South 200 East  
Vernal, UT 84078 \* (435) 789-1017





# **LEGEND:**

 **PROPOSED LOCATION**

**ConocoPhillips Company**

**RUBY FEDERAL 100H**  
**SECTION 18, T17S, R32E, N.M.P.M.**  
**990' FNL 2600' FEL**  
**LEA COUNTY, NEW MEXICO**



**DRAWN BY: B.D.**  
**SCALE: 1:100,000**

**DATE DRAWN: 04-15-15**  
**REVISED: 00-00-00**

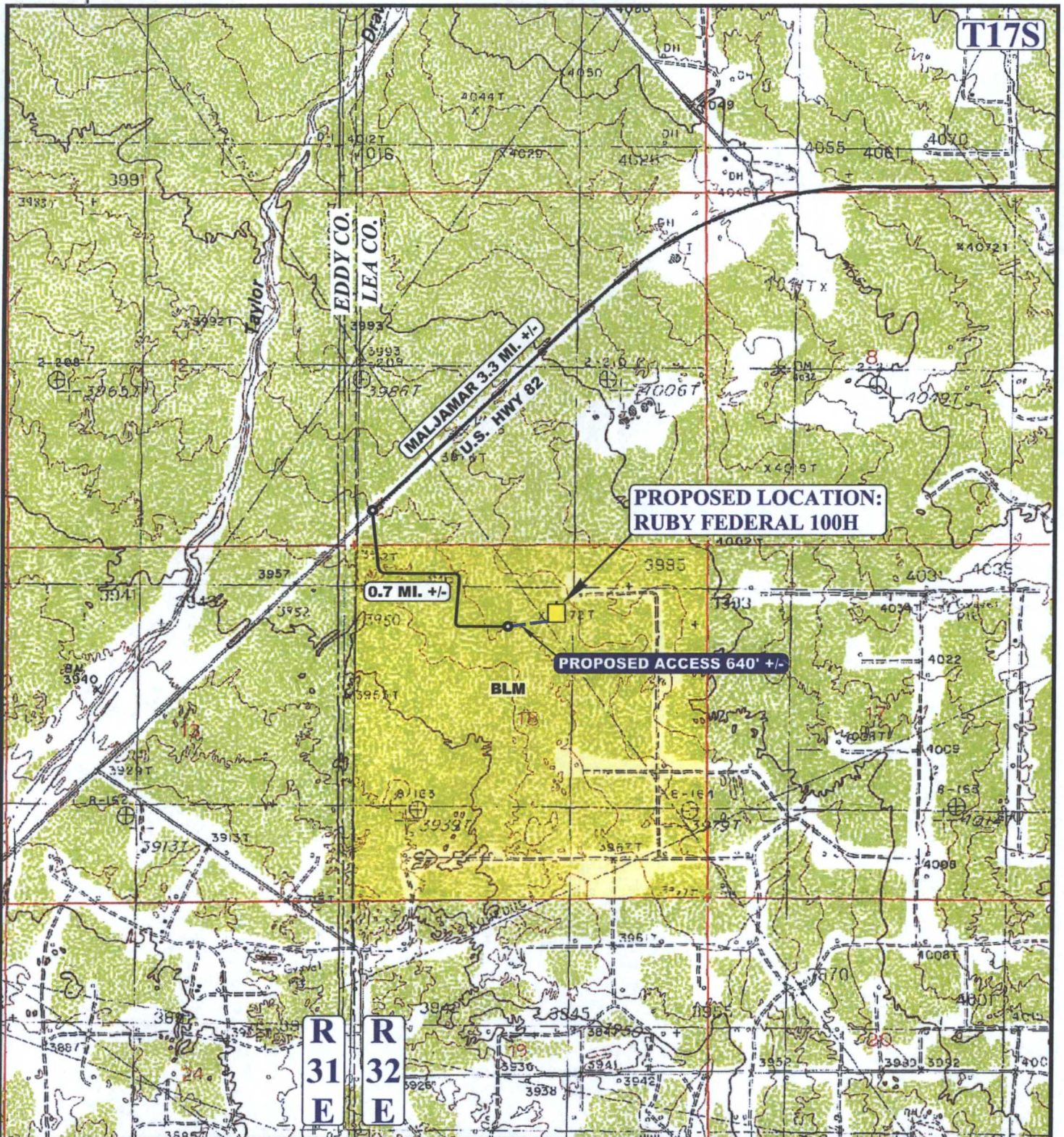
**ACCESS ROAD MAP**

**TOPO A**



**UELS, LLC**  
 Corporate Office \* 85 South 200 East  
 Vernal, UT 84078 \* (435) 789-1017





NOTE: PARCEL DATA SHOWN HAS BEEN OBTAINED FROM VARIOUS SOURCES AND SHOULD BE USED FOR MAPPING, GRAPHIC AND PLANNING PURPOSES ONLY. NO WARRANTY IS MADE BY UINTAH ENGINEERING AND LAND SURVEYING (UELS) FOR ACCURACY OF THE PARCEL DATA.

#### LEGEND:

- EXISTING ROAD
- - - PROPOSED ROAD



**UELS, LLC**  
Corporate Office \* 85 South 200 East  
Vernal, UT 84078 \* (435) 789-1017



#### ConocoPhillips Company

**RUBY FEDERAL 100H**  
SECTION 18, T17S, R32E, N.M.P.M.  
990' FNL 2600' FEL  
LEA COUNTY, NEW MEXICO

DRAWN BY: B.D.

DATE DRAWN: 04-15-15

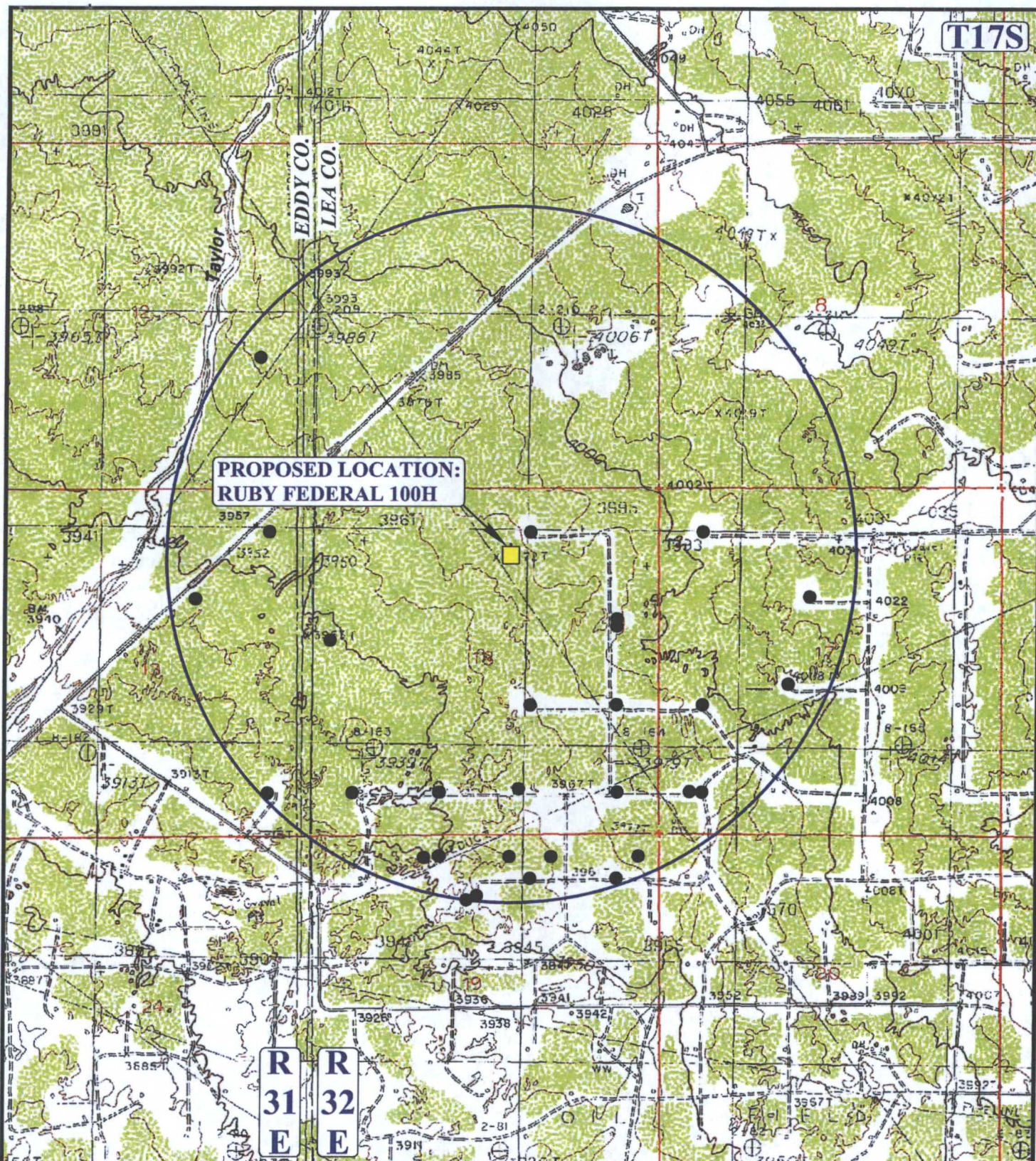
SCALE: 1" = 2000'

REVISED: 00-00-00

**ACCESS ROAD MAP**

**TOPO B**





# **LEGEND:**

- DISPOSAL WELLS
- PRODUCING WELLS
- SHUT IN WELLS
- ABANDONED WELLS
- TEMPORARILY ABANDONED



**UELS, LLC**  
Corporate Office \* 85 South 200 East  
Vernal, UT 84078 \* (435) 789-1017



**ConocoPhillips Company**

**RUBY FEDERAL 100H**  
SECTION 18, T17S, R32E, N.M.P.M.  
990' ENL 2600' FEL  
LEA COUNTY, NEW MEXICO

DRAWN BY: B.D.

DATE DRAWN: 04-15-15

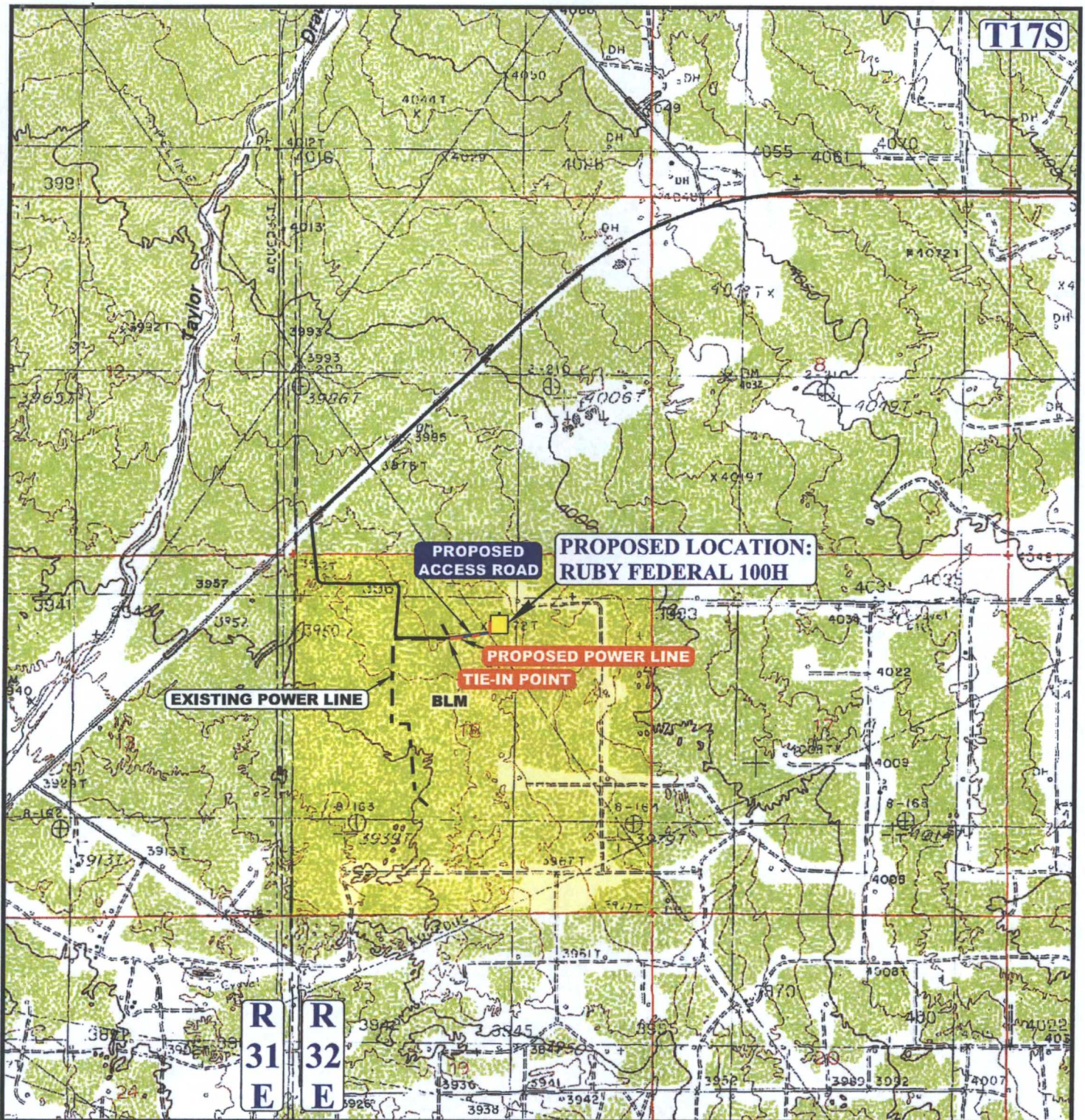
SCALE: 1" = 2000'

REVISED: 00-00-00

**WELL PROXIMITY MAP**

**TOPO C**





**APPROXIMATE TOTAL POWER LINE DISTANCE = 773' +/-**

NOTE: PARCEL DATA SHOWN HAS BEEN OBTAINED FROM VARIOUS SOURCES AND SHOULD BE USED FOR MAPPING, GRAPHIC AND PLANNING PURPOSES ONLY. NO WARRANTY IS MADE BY UINAH ENGINEERING AND LAND SURVEYING (UELS) FOR ACCURACY OF THE PARCEL DATA.

**LEGEND:**

- EXISTING ROAD
- PROPOSED ROAD
- - - PROPOSED POWER LINE
- - - EXISTING POWER LINE



**UELS, LLC**  
Corporate Office \* 85 South 200 East  
Vernal, UT 84078 \* (435) 789-1017



**ConocoPhillips Company**

**RUBY FEDERAL 100H**  
SECTION 18, T17S, R32E, N.M.P.M.  
990' FNL 2600' FEL  
LEA COUNTY, NEW MEXICO

DRAWN BY: B.D.

DATE DRAWN: 04-15-15

SCALE: 1" = 2000'

REVISED: 00-00-00

**POWER LINE MAP**

**TOPO E**



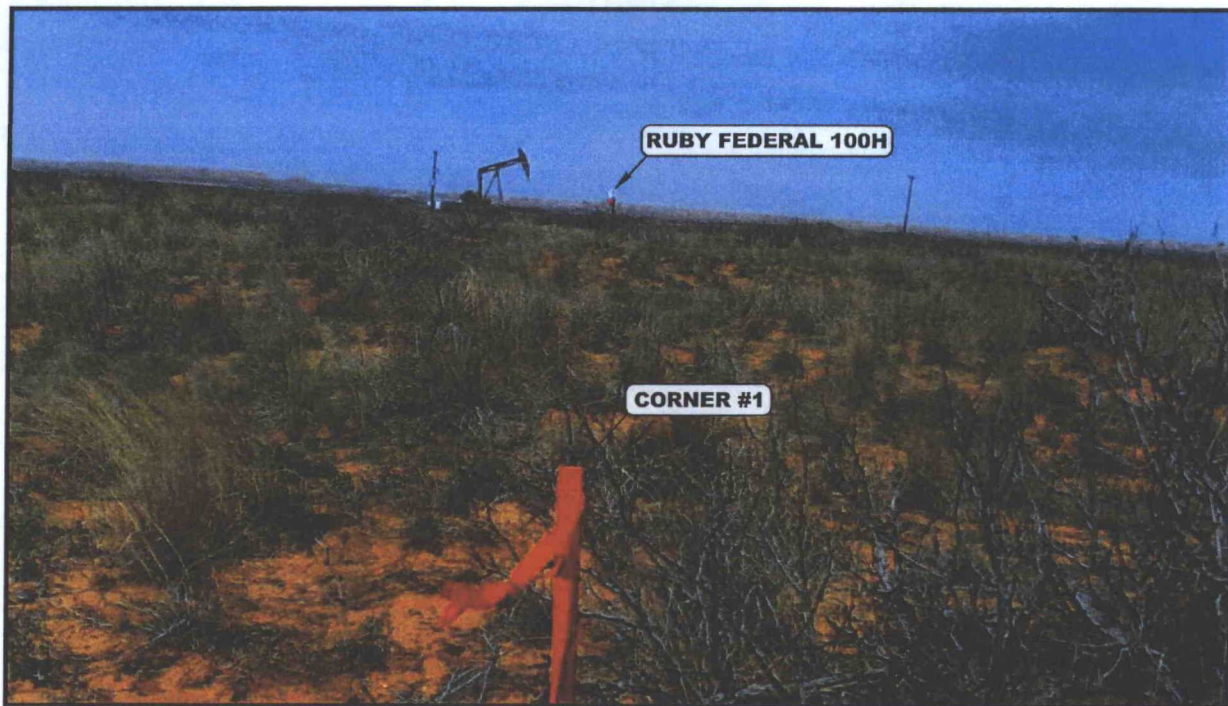


PHOTO: VIEW FROM CORNER #1 TO LOCATION STAKE

CAMERA ANGLE: NORTHERLY



PHOTO: VIEW FROM BEGINNING OF PROPOSED ACCESS

CAMERA ANGLE: NORTHEASTERLY

### ConocoPhillips Company

RUBY FEDERAL 100H  
SECTION 18, T17S, R32E, N.M.P.M.  
990' FNL 2600' FEL  
LEA COUNTY, NEW MEXICO

DRAWN BY: B.D.

DATE DRAWN: 04-15-15

TAKEN BY: J.V.

REVISED: 00-00-00

LOCATION PHOTOS

PHOTO



UELS, LLC

Corporate Office \* 85 South 200 East  
Vernal, UT 84078 \* (435) 789-1017