

District I
1625 N. French Dr., Hobbs, NM 88240
Phone: (575) 393-6161 Fax: (575) 393-0720
District II
811 S. First St., Artesia, NM 88210
Phone: (575) 748-1283 Fax: (575) 748-9720
District III
1000 Rio Brazos Road, Aztec, NM 87410
Phone: (505) 334-6178 Fax: (505) 334-6170
District IV
1220 S. St. Francis Dr., Santa Fe, NM 87505
Phone: (505) 476-3460 Fax: (505) 476-3462

State of New Mexico
Energy, Minerals & Natural Resources Department
OIL CONSERVATION DIVISION
1220 South St. Francis Dr.
Santa Fe, NM 87505

Form C-102
Revised August 1, 2011
Submit one copy to appropriate
District Office

JUL 19 2016

☐ AMENDED REPORT

RECEIVED

WELL LOCATION AND ACREAGE DEDICATION PLAT

¹ API Number 30-025- 43972	² Pool Code 57190; 63780, 47090, 57000	³ Pool Name Skaggs, Glorieta; Weir, Blinberry, Monument, Tubbs, Skaggs, Drinkard
⁴ Property Code 31365	⁵ Property Name BRITT B	⁶ Well Number 52
⁷ OGRID No. 217817	⁸ Operator Name ConocoPhillips Company	⁹ Elevation 3591.7'

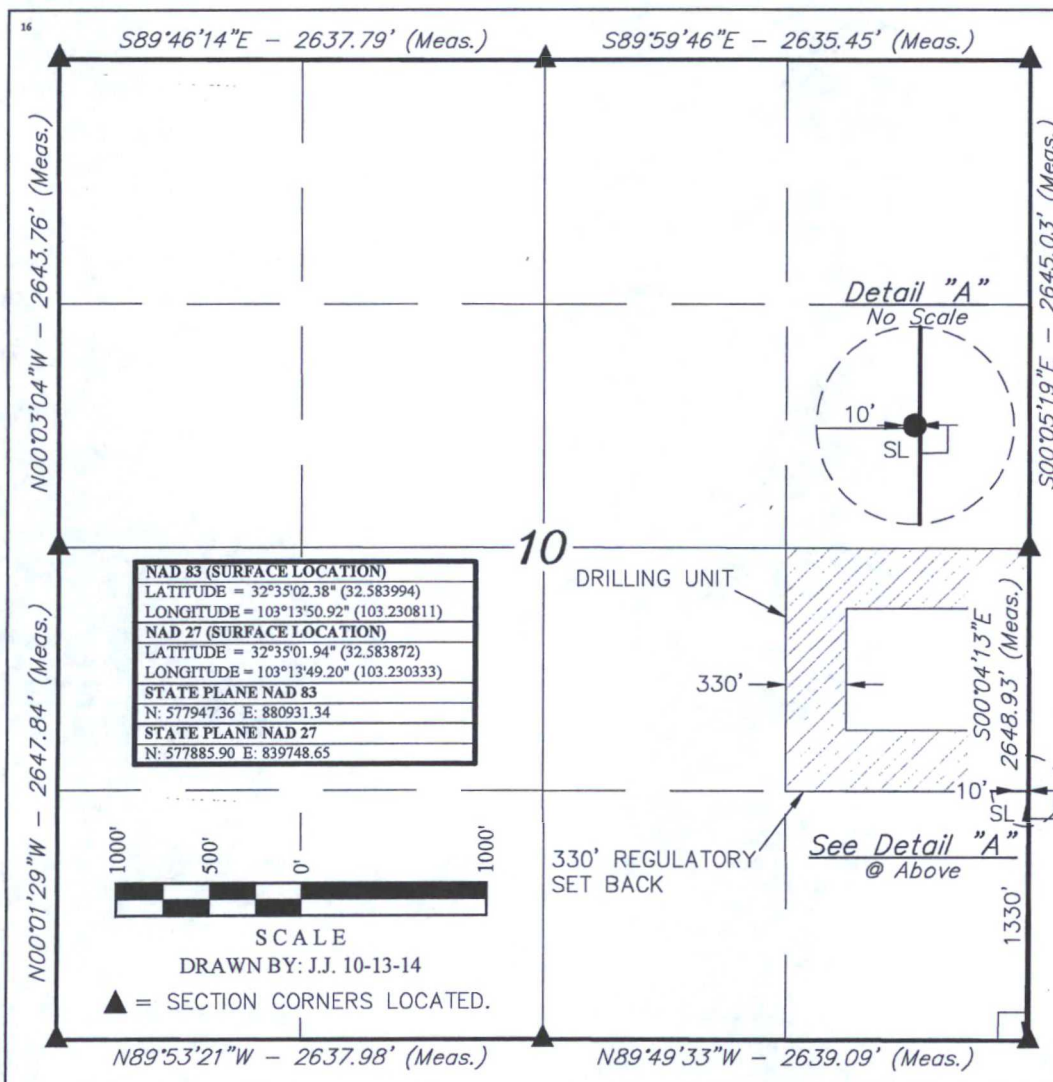
¹⁰ Surface Location

UL or lot no.	Section	Township	Range	Lot Idn	Feet from the	North/South line	Feet from the	East/West line	County
I	10	20S	37E		1330	SOUTH	10	EAST	LEA

¹¹ Bottom Hole Location If Different From Surface

UL or lot no.	Section	Township	Range	Lot Idn	Feet from the	North/South line	Feet from the	East/West line	County
¹² Dedicated Acres 40	¹³ Joint or Infill	¹⁴ Consolidation Code	¹⁵ Order No.	DHC-4775; NSL-Pending					

No allowable will be assigned to this completion until all interests have been consolidated or a non-standard unit has been approved by the division.



¹⁷ OPERATOR
CERTIFICATION

I hereby certify that the information contained herein is true and complete to the best of my knowledge and belief, and that this organization either owns a working interest or unleased mineral interest in the land including the proposed bottom hole location or has a right to drill this well at this location pursuant to a contract with an owner of such a mineral or working interest, or to a voluntary pooling agreement or a compulsory pooling order heretofore entered by the division.

Susan B. Maunder 9/9/15
Signature Date

Susan B. Maunder
Printed Name

Susan.B.Maunder@cop.com
E-mail Address

¹⁸ SURVEYOR
CERTIFICATION

I hereby certify that the well location shown on this plat was plotted from field notes of actual surveys made by me or under my supervision, and that the same is true and correct to the best of my belief.

October 01, 2014

Date of Survey
Signature and Seal of Professional Surveyor:

Nelson J. Marshall
PROFESSIONAL SURVEYOR
NEW MEXICO
12446
NELSON J. MARSHALL
10-13-14

Certificate Number:

District I
1625 N. French Dr., Hobbs, NM 88240
Phone: (575) 393-6161 Fax: (575) 393-0720
District II
811 S. First St., Artesia, NM 88210
Phone: (575) 748-1283 Fax: (575) 748-9720
District III
1000 Rio Brazos Road, Aztec, NM 87410
Phone: (505) 334-6178 Fax: (505) 334-6170
District IV
1220 S. St. Francis Dr., Santa Fe, NM 87505
Phone: (505) 476-3460 Fax: (505) 476-3462

State of New Mexico
Energy, Minerals & Natural Resources Department
OIL CONSERVATION DIVISION
1220 South St. Francis Dr.
Santa Fe, NM 87505

HOBBS OCD

JUL 19 2016

Form C-102
Revised August 1, 2011
Submit one copy to appropriate
District Office

☐ AMENDED REPORT

RECEIVED

WELL LOCATION AND ACREAGE DEDICATION PLAT

¹ API Number 30-025- 43372	² Pool Code 57190 ; 63780; 47090 ; 57000	³ Pool Name Skaggs, Gloria; Weir, Blinebry; Monument, Tubb; Skaggs, Drinkard
⁴ Property Code 31365	⁵ Property Name BRITT B	⁶ Well Number 52
⁷ OGRID No. 217817	⁸ Operator Name ConocoPhillips Company	⁹ Elevation 3591.7'

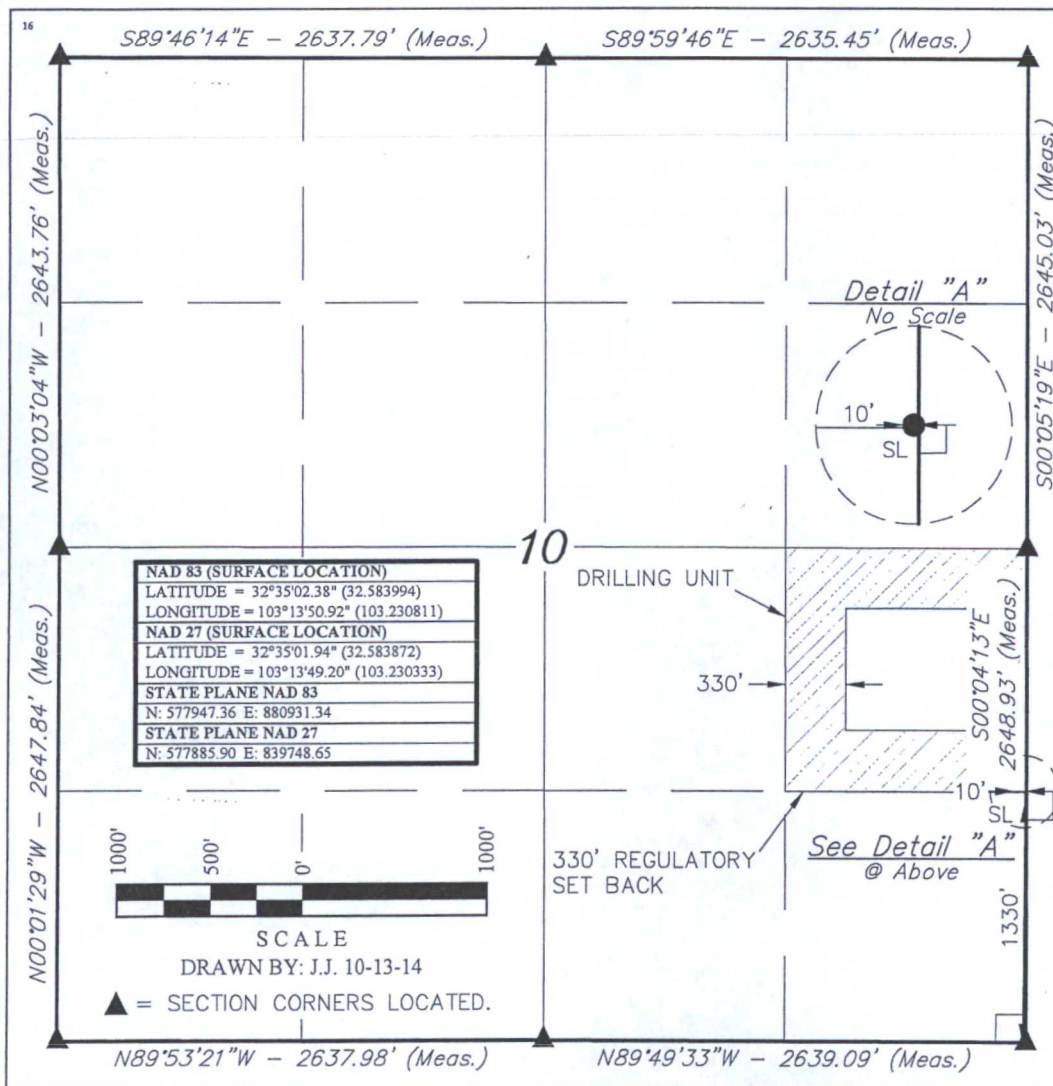
¹⁰ Surface Location

UL or lot no.	Section	Township	Range	Lot Idn	Feet from the	North/South line	Feet from the	East/West line	County
I	10	20S	37E		1330	SOUTH	10	EAST	LEA

¹¹ Bottom Hole Location If Different From Surface

UL or lot no.	Section	Township	Range	Lot Idn	Feet from the	North/South line	Feet from the	East/West line	County
¹² Dedicated Acres 40	¹³ Joint or Infill	¹⁴ Consolidation Code	¹⁵ Order No.	DHC-4775; NSL-Pending					

No allowable will be assigned to this completion until all interests have been consolidated or a non-standard unit has been approved by the division.



¹⁷ OPERATOR CERTIFICATION

I hereby certify that the information contained herein is true and complete to the best of my knowledge and belief, and that this organization either owns a working interest or unleased mineral interest in the land including the proposed bottom hole location or has a right to drill this well at this location pursuant to a contract with an owner of such a mineral or working interest, or to a voluntary pooling agreement or a compulsory pooling order heretofore entered by the division.

Susan B. Maunder 9/9/15
Signature Date

Susan B. Maunder
Printed Name

Susan.B.Maunder@cop.com
E-mail Address

¹⁸ SURVEYOR CERTIFICATION

I hereby certify that the well location shown on this plat was plotted from field notes of actual surveys made by me or under my supervision, and that the same is true and correct to the best of my belief.

October 01, 2014

Date of Survey
Signature and Seal of Professional Surveyor:



Certificate Number:

District I
1625 N. French Dr., Hobbs, NM 88240
Phone: (575) 393-6161 Fax: (575) 393-0720
District II
811 S. First St., Artesia, NM 88210
Phone: (575) 748-1283 Fax: (575) 748-9720
District III
1000 Rio Brazos Road, Aztec, NM 87410
Phone: (505) 334-6178 Fax: (505) 334-6170
District IV
1220 S. St. Francis Dr., Santa Fe, NM 87505
Phone: (505) 476-3460 Fax: (505) 476-3462

State of New Mexico
Energy, Minerals & Natural Resources Department
OIL CONSERVATION DIVISION
1220 South St. Francis Dr.
Santa Fe, NM 87505

HOBBS OCD

JUL 19 2016

Form C-102
Revised August 1, 2011
Submit one copy to appropriate
District Office

☐ AMENDED REPORT

RECEIVED

WELL LOCATION AND ACREAGE DEDICATION PLAT

¹ API Number 30-025- 43372	² Pool Code 57190; 63780; 47090; 57000	³ Pool Name Skaggs, Glorieta, Weir, Blinberry; Monument, Tubb; Skaggs, Drinkard
⁴ Property Code 31365	⁵ Property Name BRITT B	⁶ Well Number 52
⁷ OGRID No. 217817	⁸ Operator Name ConocoPhillips Company	⁹ Elevation 3591.7'

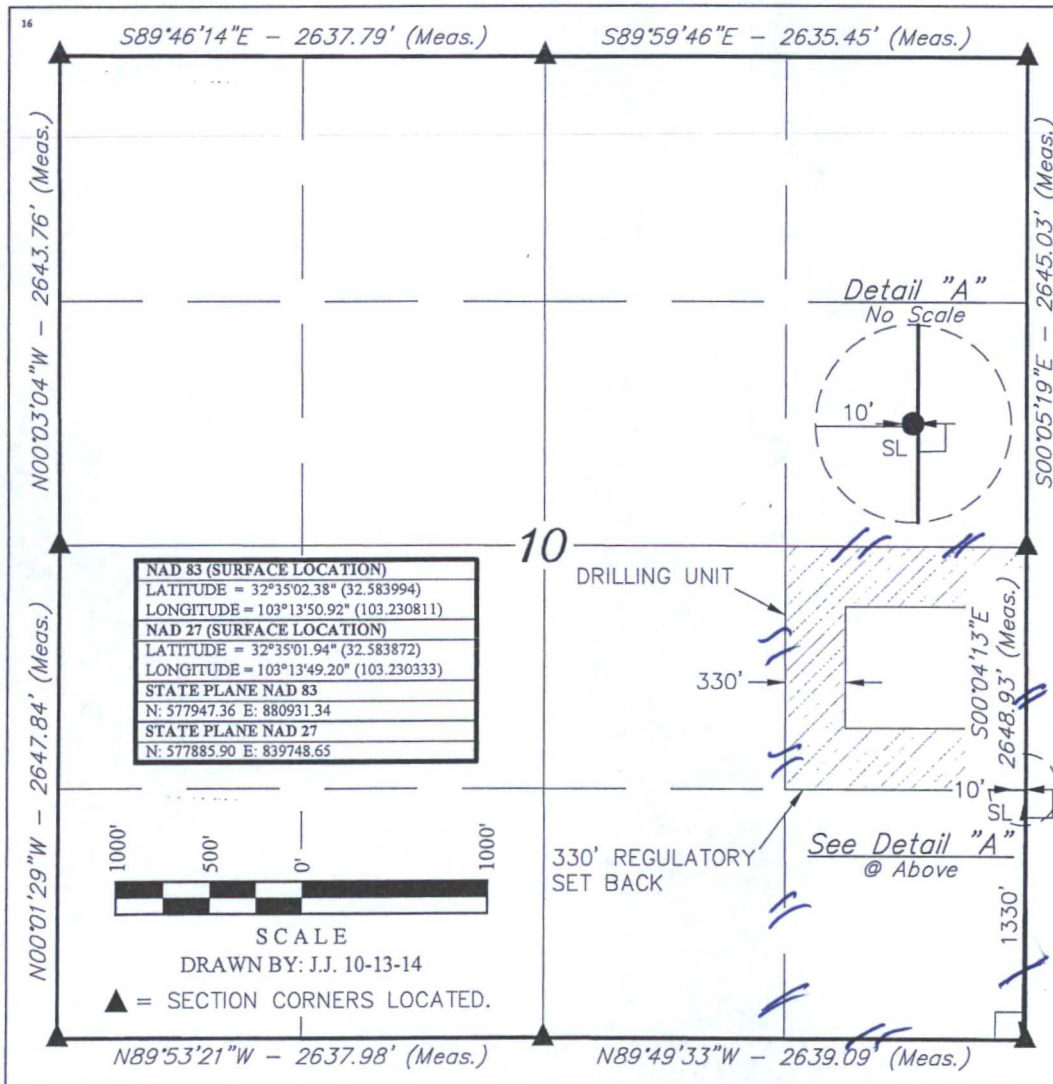
¹⁰ Surface Location

UL or lot no.	Section	Township	Range	Lot Idn	Feet from the	North/South line	Feet from the	East/West line	County
I	10	20S	37E		1330	SOUTH	10	EAST	LEA

¹¹ Bottom Hole Location If Different From Surface

UL or lot no.	Section	Township	Range	Lot Idn	Feet from the	North/South line	Feet from the	East/West line	County
¹² Dedicated Acres 80	¹³ Joint or Infill	¹⁴ Consolidation Code	¹⁵ Order No.	DHC-4775; NSL-Pending					

No allowable will be assigned to this completion until all interests have been consolidated or a non-standard unit has been approved by the division.



¹⁷ OPERATOR CERTIFICATION

I hereby certify that the information contained herein is true and complete to the best of my knowledge and belief, and that this organization either owns a working interest or unleased mineral interest in the land including the proposed bottom hole location or has a right to drill this well at this location pursuant to a contract with an owner of such a mineral or working interest, or to a voluntary pooling agreement or a compulsory pooling order heretofore entered by the division.

Susan B. Maunder 9/9/15
Signature Date

Susan B. Maunder
Printed Name

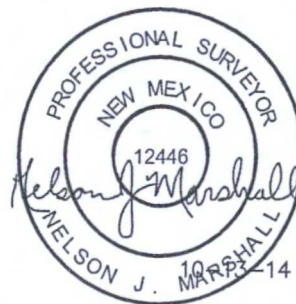
Susan.B.Maunder@cop.com
E-mail Address

¹⁸ SURVEYOR CERTIFICATION

I hereby certify that the well location shown on this plat was plotted from field notes of actual surveys made by me or under my supervision, and that the same is true and correct to the best of my belief.

October 01, 2014

Date of Survey
Signature and Seal of Professional Surveyor:



Certificate Number:

District I
1625 N. French Dr., Hobbs, NM 88240
Phone: (575) 393-6161 Fax: (575) 393-0720
District II
811 S. First St., Artesia, NM 88210
Phone: (575) 748-1283 Fax: (575) 748-9720
District III
1000 Rio Brazos Road, Aztec, NM 87410
Phone: (505) 334-6178 Fax: (505) 334-6170
District IV
1220 S. St. Francis Dr., Santa Fe, NM 87505
Phone: (505) 476-3460 Fax: (505) 476-3462

State of New Mexico
Energy, Minerals & Natural Resources Department
OIL CONSERVATION DIVISION
1220 South St. Francis Dr.
Santa Fe, NM 87505

HOBBS OCD

JUL 19 2016

Form C-102
Revised August 1, 2011
Submit one copy to appropriate
District Office

☐ AMENDED REPORT

RECEIVED

WELL LOCATION AND ACREAGE DEDICATION PLAT

¹ API Number 30-025- 43372	² Pool Code 57190, 62780, 47090 ; 57000	³ Pool Name Skaggs, Glorieta, Weir, Blimbry, Monument, Tubbs ; Skaggs, Drinkard
⁴ Property Code 31365	⁵ Property Name BRITT B	⁶ Well Number 52
⁷ OGRID No. 217817	⁸ Operator Name ConocoPhillips Company	⁹ Elevation 3591.7'

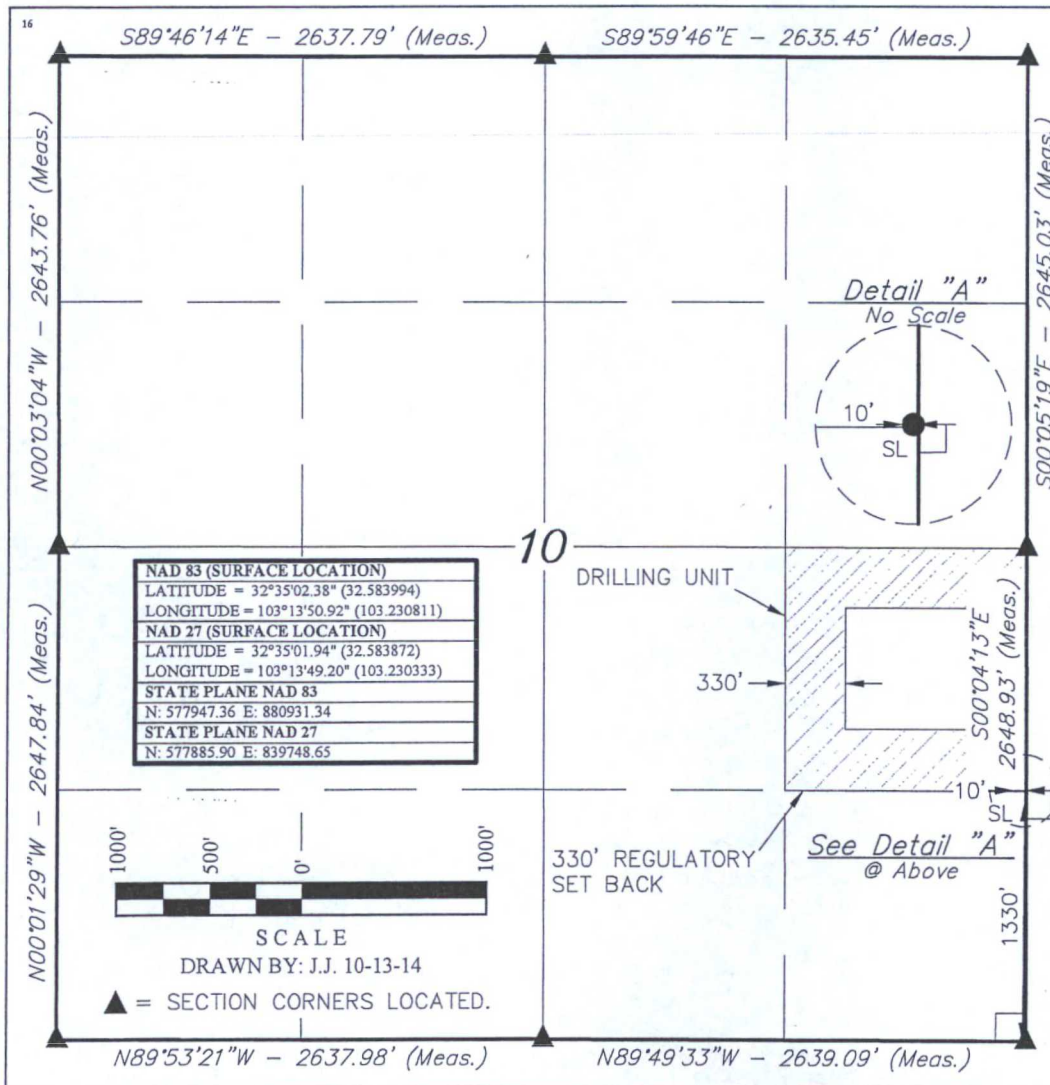
¹⁰ Surface Location

UL or lot no.	Section	Township	Range	Lot Idn	Feet from the	North/South line	Feet from the	East/West line	County
I	10	20S	37E		1330	SOUTH	10	EAST	LEA

¹¹ Bottom Hole Location If Different From Surface

UL or lot no.	Section	Township	Range	Lot Idn	Feet from the	North/South line	Feet from the	East/West line	County
¹² Dedicated Acres 40		¹³ Joint or Infill		¹⁴ Consolidation Code		¹⁵ Order No. DHC-4775; NSL-Pending			

No allowable will be assigned to this completion until all interests have been consolidated or a non-standard unit has been approved by the division.



¹⁷ OPERATOR CERTIFICATION

I hereby certify that the information contained herein is true and complete to the best of my knowledge and belief, and that this organization either owns a working interest or unleased mineral interest in the land including the proposed bottom hole location or has a right to drill this well at this location pursuant to a contract with an owner of such a mineral or working interest, or to a voluntary pooling agreement or a compulsory pooling order heretofore entered by the division.

Susan B. Maunder 9/9/15
Signature Date

Susan B. Maunder
Printed Name

Susan.B.Maunder@cop.com
E-mail Address

¹⁸ SURVEYOR CERTIFICATION

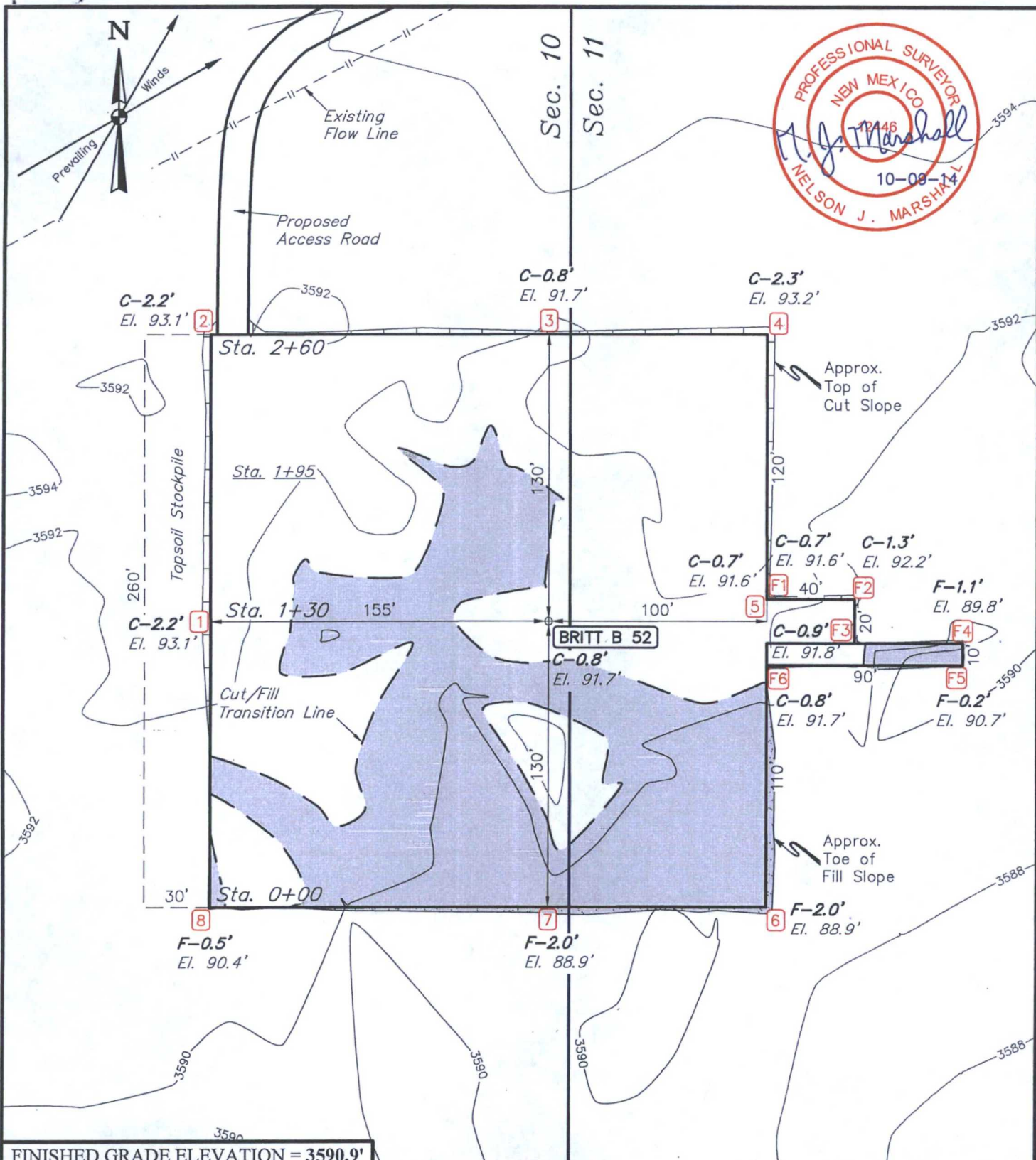
I hereby certify that the well location shown on this plat was plotted from field notes of actual surveys made by me or under my supervision, and that the same is true and correct to the best of my belief.

October 01, 2014

Date of Survey
Signature and Seal of Professional Surveyor:



Certificate Number:



NOTES:

- Flare pit is to be located a min. of 100' from the wellhead.
- Contours shown at 2' intervals.

ConocoPhillips Company

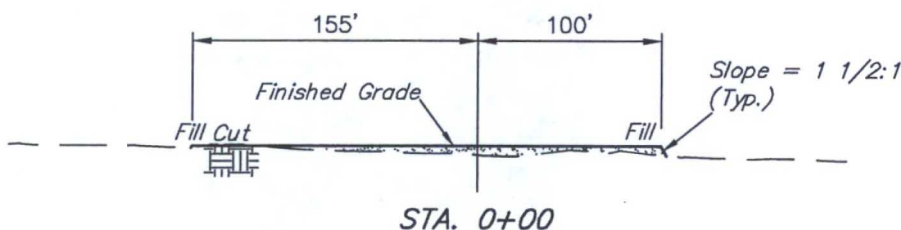
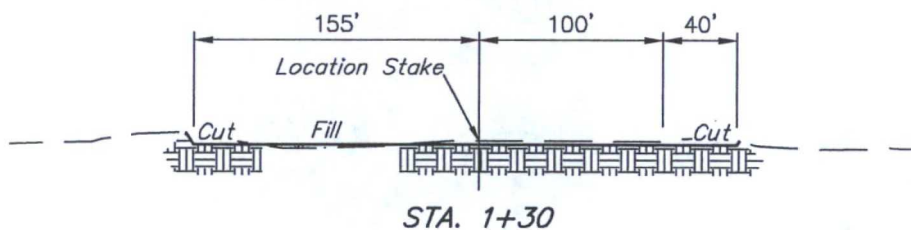
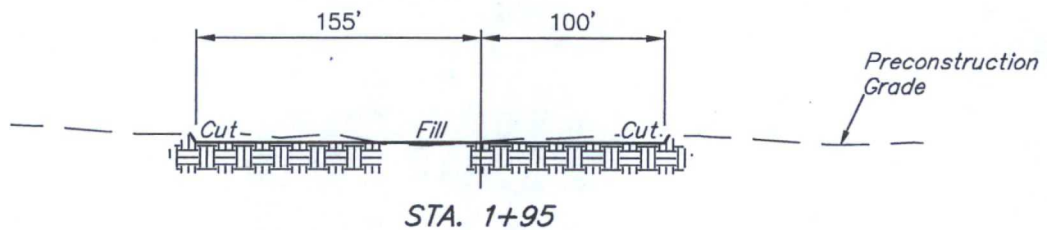
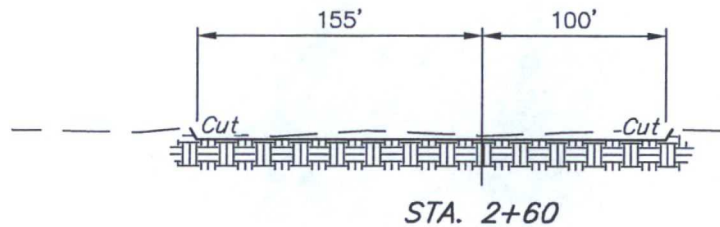
**BRITT B 52
SECTION 10, T20S, R37E, N.M.P.M.
1330' FSL 10' FEL**



UELS, LLC
Corporate Office * 85 South 200 East
Vernal, UT 84078 * (435) 789-1017

DRAWN BY: J.J.	DATE DRAWN: 10-02-14
SCALE: 1" = 60'	REVISED: 00-00-00
LOCATION LAYOUT	FIGURE #1

1" = 40'
X-Section
Scale
1" = 100'



APPROXIMATE EARTHWORK QUANTITIES

(3") TOPSOIL STRIPPING	650 Cu. Yds.
REMAINING LOCATION	1,240 Cu. Yds.
TOTAL CUT	1,890 Cu. Yds.
FILL	1,240 Cu. Yds.
EXCESS MATERIAL	650 Cu. Yds.
TOPSOIL	650 Cu. Yds.
EXCESS UNBALANCE (After Interim Rehabilitation)	0 Cu. Yds.

APPROXIMATE SURFACE DISTURBANCE AREAS

	DISTANCE	ACRES
WELL SITE DISTURBANCE	NA	±1.786
20' WIDE ACCESS ROAD R-O-W DISTURBANCE	±916.96'	±0.421
6' WIDE FLOW LINE R-O-W DISTURBANCE	±7462.27'	±1.027
TOTAL SURFACE USE AREA		±3.234

NOTES:

- Fill quantity includes 5% for compaction.
- Calculations based on 3" of topsoil stripping.
- Topsoil should not be stripped below finished grade on substructure area.

ConocoPhillips Company

BRITT B 52
SECTION 10, T20S, R37E, N.M.P.M.
1330' FSL 10' FEL



UELS, LLC
Corporate Office * 85 South 200 East
Vernal, UT 84078 * (435) 789-1017

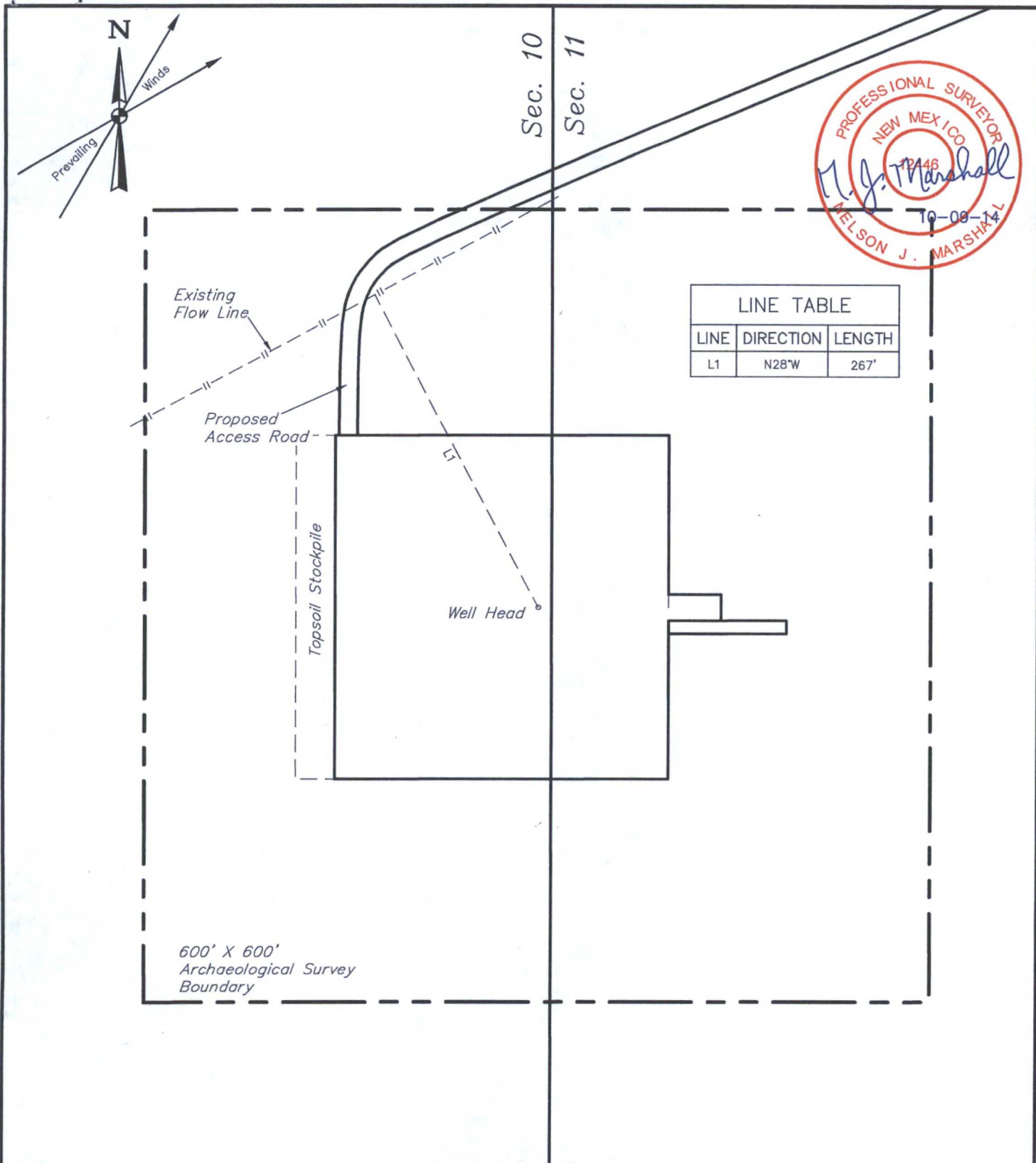
DRAWN BY: J.J.

DATE DRAWN: 10-02-14

SCALE: AS SHOWN

REVISED: 12-31-14 C.D.

TYPICAL CROSS SECTIONS **FIGURE #2**



NOTES:

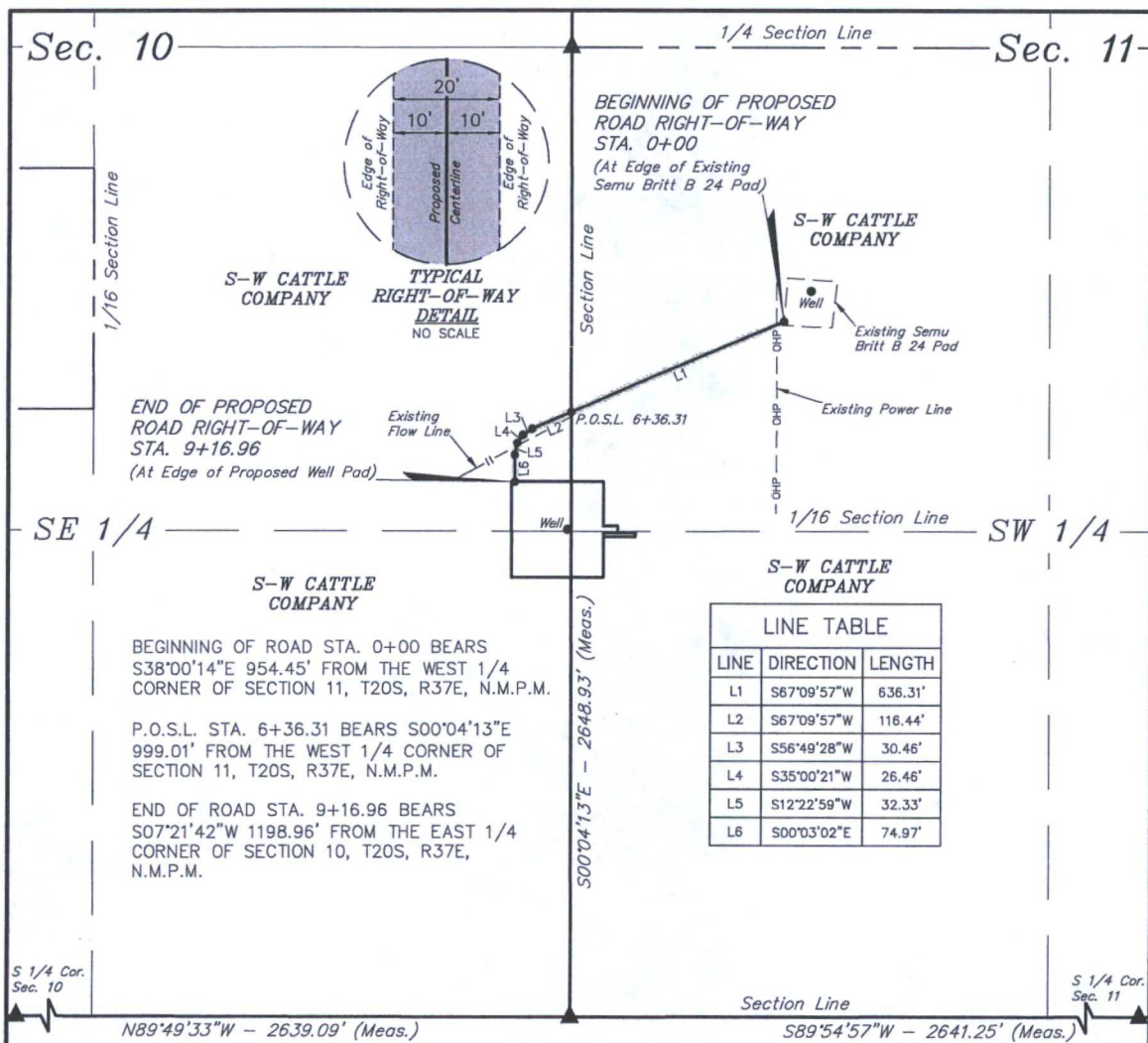
ConocoPhillips Company

**BRITT B 52
SECTION 10, T20S, R37E, N.M.P.M.
1330' FSL 10' FEL**



UELS, LLC
Corporate Office * 85 South 200 East
Vernal, UT 84078 * (435) 789-1017

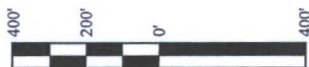
DRAWN BY: JJ.	DATE DRAWN: 10-02-14
SCALE: 1" = 100'	REVISED: 00-00-00
ARCHAEOLOGICAL SURVEY BOUNDARY	FIGURE #5



ROAD RIGHT-OF-WAY DESCRIPTION

A 20' WIDE RIGHT-OF-WAY 10' ON EACH SIDE OF THE FOLLOWING DESCRIBED CENTERLINE.

BEGINNING AT A POINT IN THE NW 1/4 SW 1/4 OF SECTION 11, T20S, R37E, N.M.P.M., WHICH BEARS S38°00'14\"E 954.45' FROM THE WEST 1/4 CORNER OF SAID SECTION 11, THENCE S67°09'57\"W 636.31' TO A POINT ON THE WEST LINE OF THE NW 1/4 SW 1/4 OF SAID SECTION 11, WHICH BEARS S00°04'13\"E 999.01' FROM THE WEST 1/4 CORNER OF SAID SECTION 11, THENCE S67°09'57\"W 116.44'; THENCE S56°49'28\"W 30.46'; THENCE S35°00'21\"W 26.46'; THENCE S12°22'59\"W 32.33'; THENCE S00°03'02\"E 74.97' TO A POINT IN THE NE 1/4 SE 1/4 OF SECTION 10, T20S, R37E, N.M.P.M., WHICH BEARS S07°21'42\"W 1198.96' FROM THE EAST 1/4 CORNER OF SAID SECTION 10. THE SIDE LINES OF SAID DESCRIBED RIGHT-OF-WAY BEING SHORTENED OR ELONGATED TO MEET THE GRANTOR'S PROPERTY LINES. BASIS OF BEARINGS IS A G.P.S. OBSERVATION. CONTAINS 0.421 ACRES MORE OR LESS.



RIGHT-OF-WAY LENGTHS

PROPERTY OWNER	FEET	ACRES	RODS
S-W CATTLE COMPANY	916.96	0.421	55.57

▲ = SECTION CORNERS LOCATED.

NOTES:

- The maximum grade of existing ground for the proposed access road is ±3%.

CERTIFICATE OF PROFESSIONAL SURVEY
THIS IS TO CERTIFY THAT THE ABOVE PLAT WAS PREPARED FROM FIELD NOTES OF ACTUAL SURVEYS MADE BY ME OR UNDER MY SUPERVISION AND THAT THE SAME ARE TRUE AND CORRECT TO THE BEST OF MY KNOWLEDGE AND BELIEF.

REGISTERED LAND SURVEYOR
REGISTRATION NO. 12446
STATE OF NEW MEXICO

10-09-14

ConocoPhillips Company

BRITT B 52
SECTIONS 10 & 11, T20S, R37E, N.M.P.M.
LEA COUNTY, NEW MEXICO

DRAWN BY: J.J. DATE DRAWN: 10-02-14
SCALE: 1\" = 400' REVISED: 00-00-00

ACCESS ROAD R-O-W



UELS, LLC
Corporate Office * 85 South 200 East
Vernal, UT 84078 * (435) 789-1017

RIGHT-OF-WAY LENGTHS			
PROPERTY OWNER	FEET	ACRES	RODS
BLM NW 1/4 SECTION 14	661.67	0.091	40.10
BLM NE 1/4 SECTION 15	226.94	0.031	13.75
TOTAL	888.61	0.122	53.85

N 1/4 Cor.
Sec. 15

N89°49'33"W - 2639.09' (Meas.)

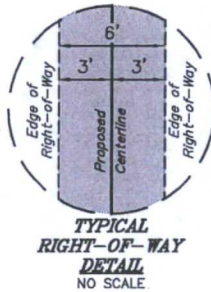
BEGINNING OF PROPOSED
FLOW LINE RIGHT-OF-WAY
ON BLM LANDS
STA. 29+34.12
(At Section Line)

W 1/4 Cor.
Sec. 11

S00°04'13"E
2648.93' (Meas.)

Sec. 11
SW 1/4

S 1/4 Cor.
Sec. 11



NE 1/4

END OF PROPOSED FLOW
LINE RIGHT-OF-WAY
STA. 74+62.27
(At Existing Britt B Battery)

Existing Britt
B Battery

BLM

BEGINNING OF PROPOSED
FLOW LINE RIGHT-OF-WAY
ON BLM LANDS
STA. 72+35.33
(At Property Line)

END OF PROPOSED FLOW
LINE RIGHT-OF-WAY ON
BLM LANDS
STA. 35+95.79
(At Property Line)

LINE TABLE		
LINE	DIRECTION	LENGTH
L12	S00°05'50"W	661.67'
L26	S39°56'01"W	120.05'
L27	S67°40'04"W	106.89'

Sec. 15

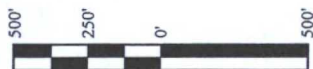
FLOW LINE RIGHT-OF-WAY
DESCRIPTION ON BLM LANDS

Section Line

Sec. 14

A 6' WIDE RIGHT-OF-WAY 3' ON EACH SIDE OF THE FOLLOWING
DESCRIBED CENTERLINE.

BEGINNING AT A POINT ON THE NORTH LINE OF THE NW 1/4 NW 1/4 OF SECTION 14, T20S, R37E, N.M.P.M., WHICH BEARS N89°54'57"E 766.78' FROM THE NORTHWEST CORNER OF SAID SECTION 14, THENCE S00°05'50"W 661.67' TO A POINT ON THE SOUTH LINE OF THE NE 1/4 NW 1/4 NW 1/4 OF SAID SECTION 14, WHICH BEARS S49°12'55"E 1011.21' FROM THE NORTHWEST CORNER OF SAID SECTION 14. ALSO BEGINNING AT A POINT ON THE NORTH LINE OF THE SE 1/4 SW 1/4 NE 1/4 OF SECTION 15, T20S, R37E, N.M.P.M., WHICH BEARS N69°13'43"W 1881.71' FROM THE EAST 1/4 CORNER OF SAID SECTION 15, THENCE S39°56'01"W 120.05'; THENCE S67°40'04"W 106.89' TO A POINT IN THE SW 1/4 NE 1/4 OF SAID SECTION 15, WHICH BEARS N74°33'23"W 2007.83' FROM THE EAST 1/4 CORNER OF SAID SECTION 15. THE SIDE LINES OF SAID DESCRIBED RIGHT-OF-WAY BEING SHORTENED OR ELONGATED TO MEET THE GRANTOR'S PROPERTY LINES. BASIS OF BEARINGS IS A G.P.S. OBSERVATION. CONTAINS 0.122 ACRES MORE OR LESS.



▲ = SECTION CORNERS LOCATED.

BEGINNING OF FLOW LINE ON BLM LANDS STA. 29+34.12 BEARS N89°54'57"E 766.78' FROM THE NORTHWEST CORNER OF SECTION 14, T20S, R37E, N.M.P.M.

P.O.P.L. OF FLOW LINE ON BLM LANDS STA. 35+95.79 BEARS S49°12'55"E 1011.21' FROM THE NORTHWEST CORNER OF SECTION 14, T20S, R37E, N.M.P.M.

P.O.P.L. OF FLOW LINE ON BLM LANDS STA. 72+35.33 BEARS N69°13'43"W 1881.71' FROM THE EAST 1/4 CORNER OF SECTION 15, T20S, R37E, N.M.P.M.

END OF FLOW LINE STA. 74+62.27 BEARS N74°33'23"W 2007.83' FROM THE EAST 1/4 CORNER OF SECTION 15, T20S, R37E, N.M.P.M.

CERTIFICATE OF PROFESSIONAL SURVEY

THIS IS TO CERTIFY THAT THE ABOVE PLAN WAS PREPARED FROM FIELD NOTES OF ACTUAL SURVEYS MADE BY ME OR UNDER MY SUPERVISION AND THAT THE SAME ARE TRUE AND CORRECT TO THE BEST OF MY KNOWLEDGE AND BELIEF.

Robert J. Marshall
REGISTERED LAND SURVEYOR
REGISTRATION NO. 12446
STATE OF NEW MEXICO

12-31-14

NOTES:

ConocoPhillips Company

BRITT B 52
SECTIONS 14 & 15, T20S, R37E, N.M.P.M.
LEA COUNTY, NEW MEXICO

DRAWN BY: J.J.	DATE DRAWN: 10-02-14
SCALE: 1" = 500'	REVISED: 12-31-14 C.D.

FLOW LINE R-O-W



UELS, LLC
Corporate Office * 85 South 200 East
Vernal, UT 84078 * (435) 789-1017

FLOW LINE RIGHT-OF-WAY DESCRIPTION ON S-W CATTLE COMPANY LANDS

A 6' WIDE RIGHT-OF-WAY 3' ON EACH SIDE OF THE FOLLOWING DESCRIBED CENTERLINE.

BEGINNING AT A POINT IN THE NE 1/4 SE 1/4 OF SECTION 10, T20S, R37E, N.M.P.M., WHICH BEARS S06°53'10"W 1197.70' FROM THE EAST 1/4 CORNER OF SAID SECTION 10, THENCE N00°04'07"W 75.06'; THENCE N12°33'33"E 28.68'; THENCE N35°59'55"E 23.31'; THENCE N57°30'48"E 25.48'; THENCE N67°21'43"E 112.14' TO A POINT ON THE EAST LINE OF THE NE 1/4 SE 1/4 OF SAID SECTION 10, WHICH BEARS S00°04'13"E 1010.31' FROM THE EAST 1/4 CORNER OF SAID SECTION 10, THENCE N67°21'43"E 634.99'; THENCE S86°04'07"E 132.64'; THENCE S21°56'42"E 63.14'; THENCE S88°02'19"E 25.30'; THENCE S00°05'37"E 1377.57'; THENCE S00°05'50"W 435.82' TO A POINT ON THE SOUTH LINE OF THE SW 1/4 SW 1/4 OF SECTION 11, T20S, R37E, N.M.P.M., WHICH BEARS N89°54'57"E 766.78' FROM THE SOUTHWEST CORNER OF SAID SECTION 11. ALSO BEGINNING AT A POINT ON THE SOUTH LINE OF THE NE 1/4 NW 1/4 NW 1/4 OF SECTION 14, T20S, R37E, N.M.P.M., WHICH BEARS S49°12'55"E 1011.21' FROM THE NORTHWEST CORNER OF SAID SECTION 14, THENCE S00°05'50"W 100.83'; THENCE S88°09'50"W 200.39'; THENCE S89°45'33"W 564.81' TO A POINT ON THE WEST LINE OF THE NW 1/4 NW 1/4 OF SAID SECTION 14, WHICH BEARS S00°01'47"E 770.17' FROM THE NORTHWEST CORNER OF SAID SECTION 14, THENCE S89°45'33"W 448.62'; THENCE S66°24'40"W 80.69'; THENCE S19°03'55"W 67.72'; THENCE S02°12'51"W 740.01'; THENCE S09°05'57"E 176.72'; THENCE N86°49'58"W 30.84'; THENCE N42°57'55"W 43.86'; THENCE S86°33'39"W 96.39'; THENCE S79°17'57"W 1048.94'; THENCE S39°56'01"W 39.75' TO A POINT ON THE SOUTH LINE OF THE NE 1/4 SW 1/4 NE 1/4 OF SECTION 15, T20S, R37E, N.M.P.M., WHICH BEARS N69°13'43"W 1881.71' FROM THE EAST 1/4 CORNER OF SAID SECTION 15. THE SIDE LINES OF SAID DESCRIBED RIGHT-OF-WAY BEING SHORTENED OR ELONGATED TO MEET THE GRANTOR'S PROPERTY LINES. BASIS OF BEARINGS IS A G.P.S. OBSERVATION. CONTAINS 0.905 ACRES MORE OR LESS.

LINE TABLE		
LINE	DIRECTION	LENGTH
L1	N00°04'07"W	75.06'
L2	N12°33'33"E	28.68'
L3	N35°59'55"E	23.31'
L4	N57°30'48"E	25.48'
L5	N67°21'43"E	112.14'
L6	N67°21'43"E	634.99'
L7	S86°04'07"E	132.64'
L8	S21°56'42"E	63.14'
L9	S88°02'19"E	25.30'
L10	S00°05'37"E	1377.57'
L11	S00°05'50"W	435.82'
L12	S00°05'50"W	661.67'
L13	S00°05'50"W	100.83'
L14	S88°09'50"W	200.39'
L15	S89°45'33"W	564.81'
L16	S89°45'33"W	448.62'
L17	S66°24'40"W	80.69'
L18	S19°03'55"W	67.72'
L19	S02°12'51"W	740.01'
L20	S09°05'57"E	176.72'
L21	N86°49'58"W	30.84'
L22	N42°57'55"W	43.86'
L23	S86°33'39"W	96.39'
L24	S79°17'57"W	1048.94'
L25	S39°56'01"W	39.75'
L26	S39°56'01"W	120.05'
L27	S67°40'04"W	106.89'

BEGINNING OF FLOW LINE STA. 0+00 BEARS S06°53'10"W 1197.70' FROM THE EAST 1/4 CORNER OF SECTION 10, T20S, R37E, N.M.P.M.

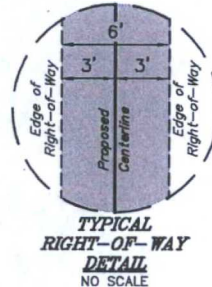
P.O.S.L. STA. 2+64.67 BEARS S00°04'13"E 1010.31' FROM THE EAST 1/4 CORNER OF SECTION 10, T20S, R37E, N.M.P.M.

P.O.S.L. STA. 29+34.12 BEARS N89°54'57"E 766.78' FROM THE SOUTHWEST CORNER OF SECTION 11, T20S, R37E, N.M.P.M.

P.O.P.L. STA. 35+95.74 BEARS S49°12'55"E 1011.21' FROM THE NORTHWEST CORNER OF SECTION 14, T20S, R37E, N.M.P.M.

P.O.S.L. STA. 44+61.82 BEARS S00°01'47"E 770.17' FROM THE NORTHWEST CORNER OF SECTION 14, T20S, R37E, N.M.P.M.

END OF FLOW LINE ON FEE LANDS STA. 72+35.33 BEARS N69°13'43"W 1881.71' FROM THE EAST 1/4 CORNER OF SECTION 15, T20S, R37E, N.M.P.M.



RIGHT-OF-WAY LENGTHS			
PROPERTY OWNER	FEET	ACRES	RODS
S-W CATTLE COMPANY	6573.66	0.905	398.40



▲ = SECTION CORNERS LOCATED.

Sheet 1 of 3

CERTIFICATE OF PROFESSIONAL SURVEY

THIS IS TO CERTIFY THAT THE ABOVE PLAT WAS PREPARED FROM FIELD NOTES OF ACTUAL SURVEYS MADE BY ME OR UNDER MY SUPERVISION AND THAT THE SAME ARE TRUE AND CORRECT TO THE BEST OF MY KNOWLEDGE AND BELIEF.

REGISTERED LAND SURVEYOR
REGISTRATION NO. 12446
STATE OF NEW MEXICO

12-31-14

NOTES:



UELS, LLC
Corporate Office * 85 South 200 East
Vernal, UT 84078 * (435) 789-1017

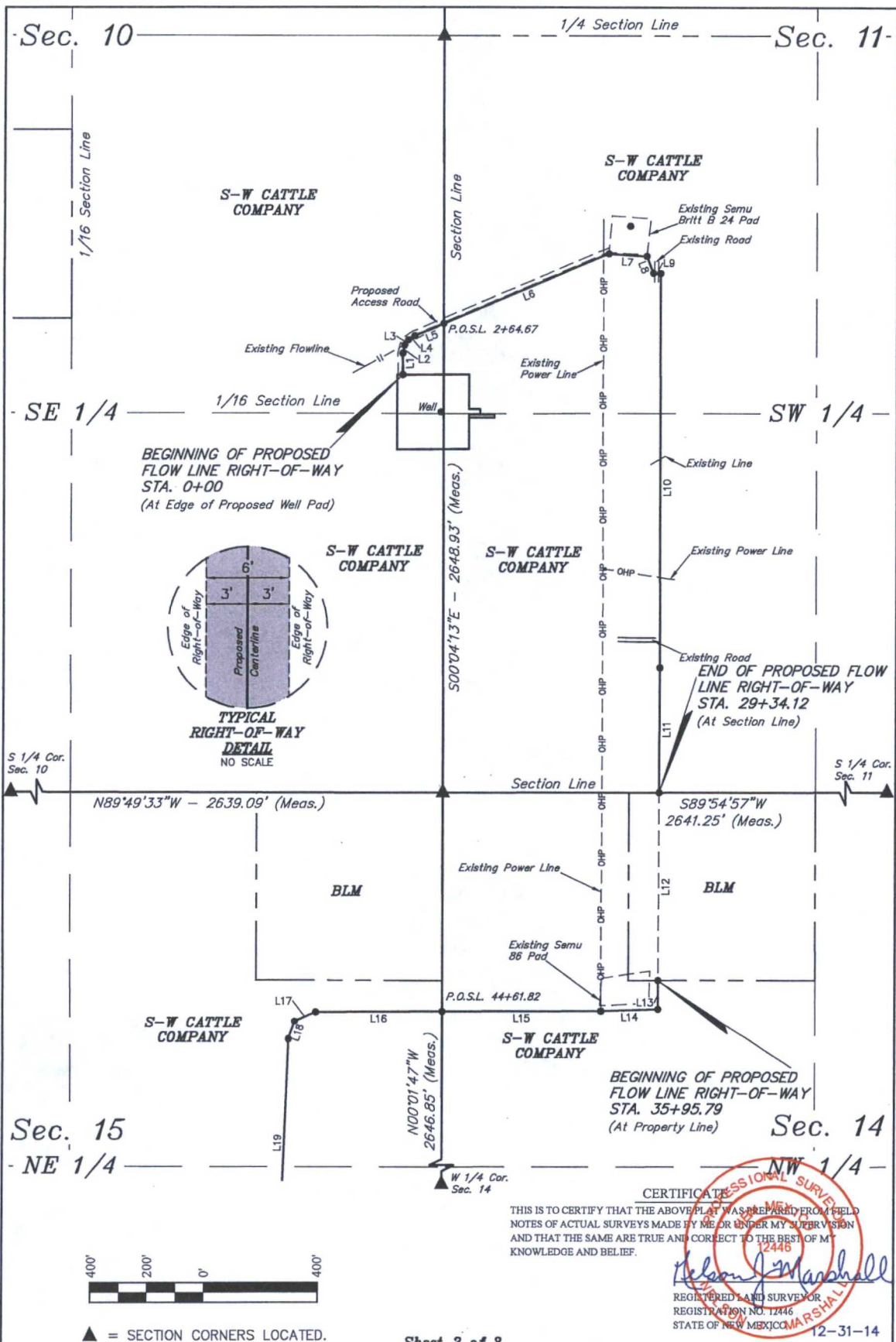


ConocoPhillips Company

BRITT B 52
SECTIONS 10, 11, 14 & 15, T20S, R37E, N.M.P.M.
LEA COUNTY, NEW MEXICO

DRAWN BY: J.J.	DATE DRAWN: 10-02-14
SCALE: NONE	REVISED: 12-31-14 C.D.

FLOW LINE R-O-W



NOTES:

▲ = SECTION CORNERS LOCATED.

UINTEAH
ENGINEERING & LAND SURVEYING

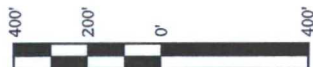
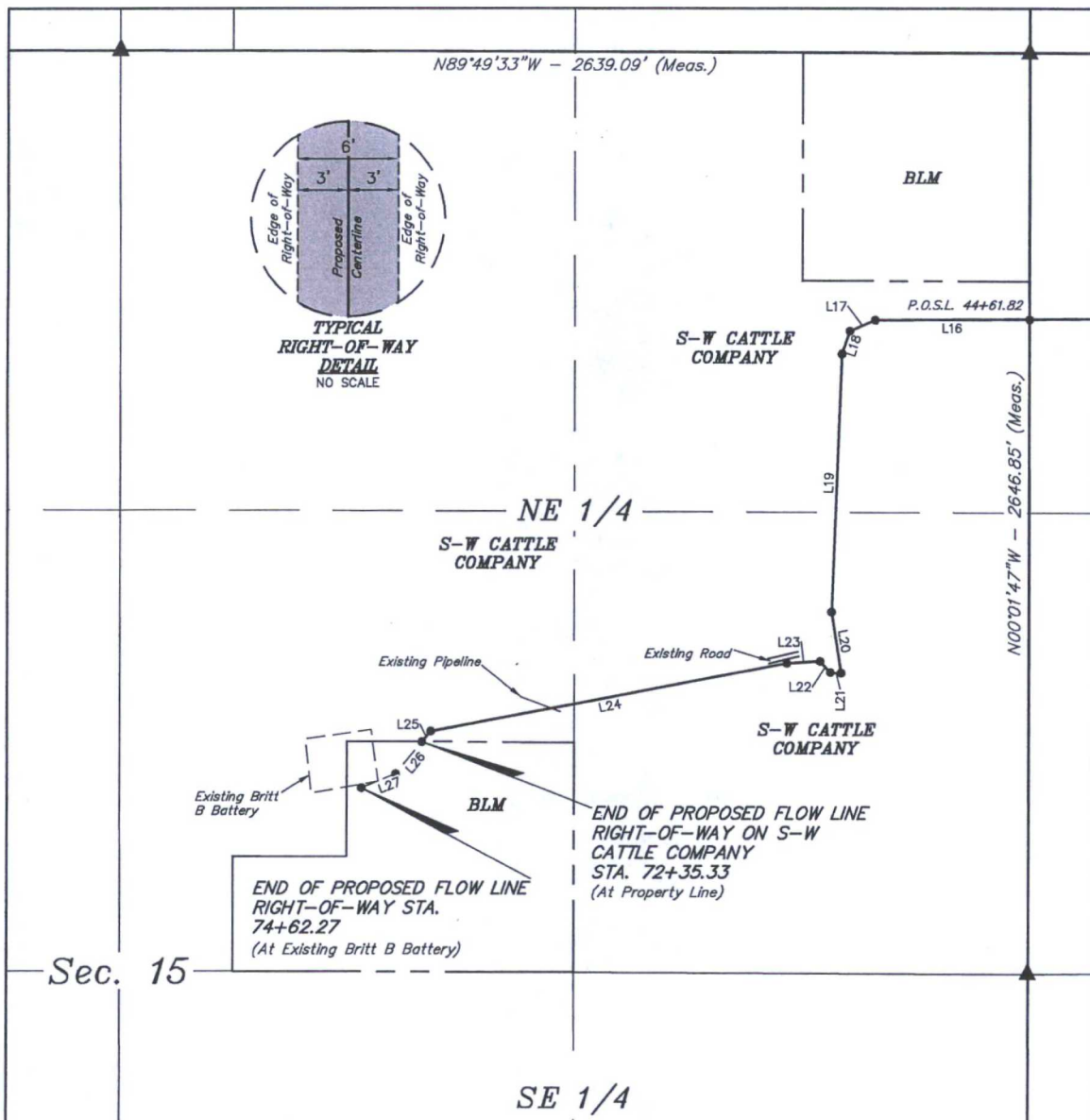
UELS, LLC
Corporate Office * 85 South 200 East
Vernal, UT 84078 * (435) 789-1017

CERTIFICATE OF SURVEY

THIS IS TO CERTIFY THAT THE ABOVE PLAT WAS PREPARED FROM FIELD NOTES OF ACTUAL SURVEYS MADE BY ME OR UNDER MY SUPERVISION AND THAT THE SAME ARE TRUE AND CORRECT TO THE BEST OF MY KNOWLEDGE AND BELIEF.

REGISTERED LAND SURVEYOR
REGISTRATION NO. 12446
STATE OF NEW MEXICO

12-31-14



▲ = SECTION CORNERS LOCATED.

Sheet 3 of 3

CERTIFICATE OF PROFESSIONAL SURVEY
THIS IS TO CERTIFY THAT THE ABOVE PLAT WAS PREPARED FROM FIELD NOTES OF ACTUAL SURVEYS MADE BY ME OR UNDER MY SUPERVISION AND THAT THE SAME ARE TRUE AND CORRECT TO THE BEST OF MY KNOWLEDGE AND BELIEF.

12446
Nelson J. Marshall
REGISTERED LAND SURVEYOR
REGISTRATION NO. 12446
STATE OF NEW MEXICO
12-31-14

NOTES:

ConocoPhillips Company

BRITT B 52
SECTIONS 10, 11, 14 & 15, T20S, R37E, N.M.P.M.
LEA COUNTY, NEW MEXICO

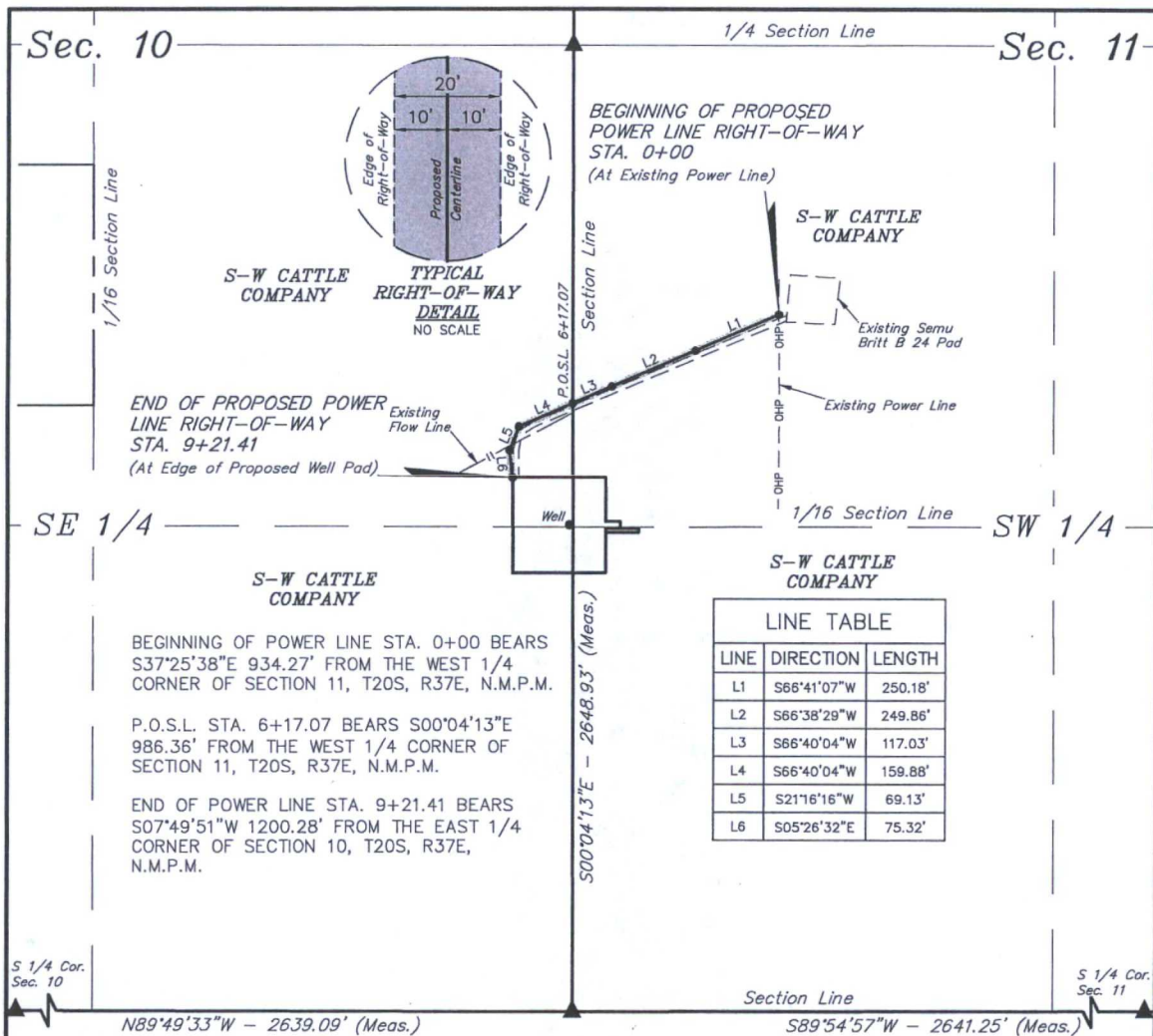
DRAWN BY: J.J.	DATE DRAWN: 10-02-14
SCALE: 1" = 400'	REVISED: 12-31-14 C.D.

FLOW LINE R-O-W



UELS, LLC
Corporate Office * 85 South 200 East
Vernal, UT 84078 * (435) 789-1017

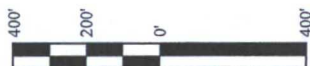




POWER LINE RIGHT-OF-WAY DESCRIPTION

A 20' WIDE RIGHT-OF-WAY 10' ON EACH SIDE OF THE FOLLOWING DESCRIBED CENTERLINE.

BEGINNING AT A POINT IN THE NW 1/4 SW 1/4 OF SECTION 11, T20S, R37E, N.M.P.M., WHICH BEARS S37°25'38"E 934.27' FROM THE WEST 1/4 CORNER OF SAID SECTION 11, THENCE S66°41'07"W 250.18'; THENCE S66°38'29"W 249.86'; THENCE S66°40'04"W 117.03' TO A POINT ON THE WEST LINE OF THE NW 1/4 SW 1/4 OF SAID SECTION 11, WHICH BEARS S00°04'13"E 986.36' FROM THE WEST 1/4 CORNER OF SAID SECTION 11, THENCE S66°40'04"W 159.88'; THENCE S21°16'16"W 69.13'; THENCE S05°26'32"E 75.32' TO A POINT IN THE NE 1/4 SE 1/4 OF SECTION 10, T20S, R37E, N.M.P.M., WHICH BEARS S07°49'51"W 1200.28' FROM THE EAST 1/4 CORNER OF SAID SECTION 10. THE SIDE LINES OF SAID DESCRIBED RIGHT-OF-WAY BEING SHORTENED OR ELONGATED TO MEET THE GRANTOR'S PROPERTY LINES. BASIS OF BEARINGS IS A G.P.S. OBSERVATION. CONTAINS 0.423 ACRES MORE OR LESS.



CERTIFICATE

THIS IS TO CERTIFY THAT THE ABOVE PLAT WAS PREPARED FROM A FIELD NOTES OF ACTUAL SURVEYS MADE BY ME OR UNDER MY SUPERVISION AND THAT THE SAME ARE TRUE AND CORRECT TO THE BEST OF MY KNOWLEDGE AND BELIEF.

Nelson J. Marshall
REGISTERED LAND SURVEYOR
REGISTRATION NO. 12446
STATE OF NEW MEXICO

NOTES:

ConocoPhillips Company

BRITT B 52
SECTIONS 10 & 11, T20S, R37E, N.M.P.M.
LEA COUNTY, NEW MEXICO

DRAWN BY: J.J. DATE DRAWN: 10-02-14
SCALE: 1" = 400' REVISED: 00-00-00

POWER LINE R-O-W



UELS, LLC
Corporate Office * 85 South 200 East
Vernal, UT 84078 * (435) 789-1017

BEGINNING AT THE INTERSECTION OF U.S. HIGHWAY 62/U.S. HIGHWAY 180 AND HIGHWAY 18, PROCEED IN A SOUTHERLY DIRECTION FROM HOBBS, NEW MEXICO ALONG HIGHWAY 18 APPROXIMATELY 7.3 MILES TO THE JUNCTION OF THIS ROAD AND BILLY WALKER ROAD TO THE WEST; TURN RIGHT AND PROCEED IN A WESTERLY, THEN NORTHWESTERLY DIRECTION APPROXIMATELY 5.7 MILES TO THE JUNCTION OF THIS ROAD AND AN EXISTING ROAD TO THE SOUTHWEST; TURN LEFT AND PROCEED IN A SOUTHWESTERLY, THEN WESTERLY, THEN SOUTHERLY DIRECTION APPROXIMATELY 1.0 MILES TO THE BEGINNING OF THE PROPOSED ACCESS ROAD TO THE SOUTHWEST; FOLLOW ROAD FLAGS IN A SOUTHWESTERLY, THEN SOUTHERLY DIRECTION APPROXIMATELY 917' TO THE PROPOSED LOCATION.

TOTAL DISTANCE FROM HOBBS, NEW MEXICO TO THE PROPOSED WELL LOCATION IS APPROXIMATELY 14.2 MILES.

ConocoPhillips Company

**BRITT B 52
SECTION 10, T20S, R37E, N.M.P.M.
1330' FSL 10' FEL**

DRAWN BY: N.W.

DATE DRAWN: 10-07-14

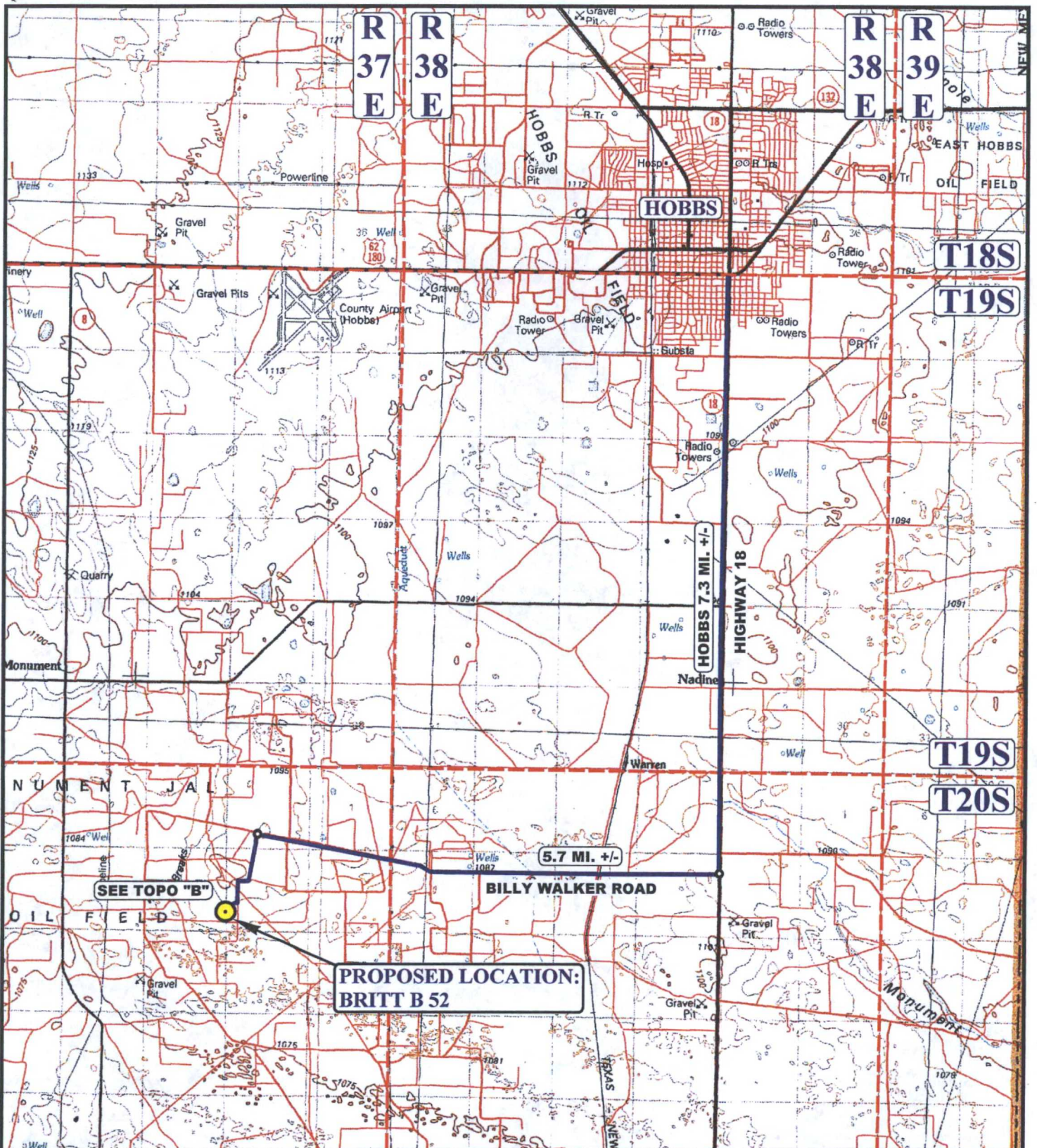
REVISED: 00-00-00

ROAD DESCRIPTION



UELS, LLC

Corporate Office * 85 South 200 East
Vernal, UT 84078 * (435) 789-1017



LEGEND:

- PROPOSED LOCATION
- ACCESS ROAD



UELS, LLC
Corporate Office * 85 South 200 East
Vernal, UT 84078 * (435) 789-1017



ConocoPhillips Company

BRITT B 52
SECTION 10, T20S, R37E, N.M.P.M.
1330' FSL 10' FEL

DRAWN BY: N.W.

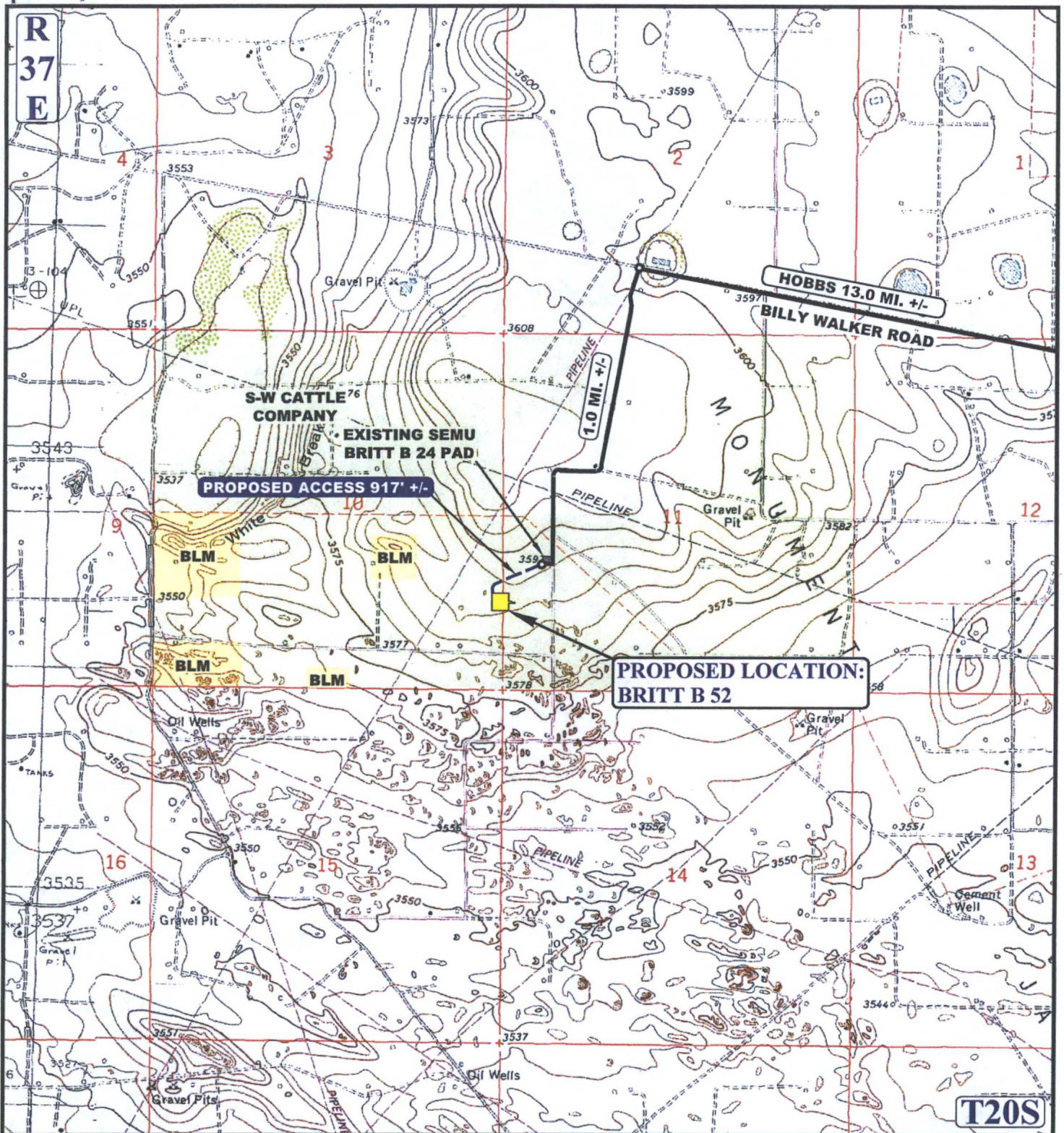
SCALE: 1:100,000

DATE DRAWN: 10-07-14

REVISED: 00-00-00

ACCESS ROAD MAP

TOPO A



NOTE: PARCEL DATA SHOWN HAS BEEN OBTAINED FROM VARIOUS SOURCES AND SHOULD BE USED FOR MAPPING, GRAPHIC AND PLANNING PURPOSES ONLY. NO WARRANTY IS MADE BY UINAH ENGINEERING AND LAND SURVEYING (UELS) FOR ACCURACY OF THE PARCEL DATA.

LEGEND:

— EXISTING ROAD
 - - - PROPOSED ROAD

ConocoPhillips Company

BRITT B 52
 SECTION 10, T20S, R37E, N.M.P.M.
 1330' FSL 10' FEL

DRAWN BY: N.W.

DATE DRAWN: 10-07-14

SCALE: 1" = 2000'

REVISED: 00-00-00

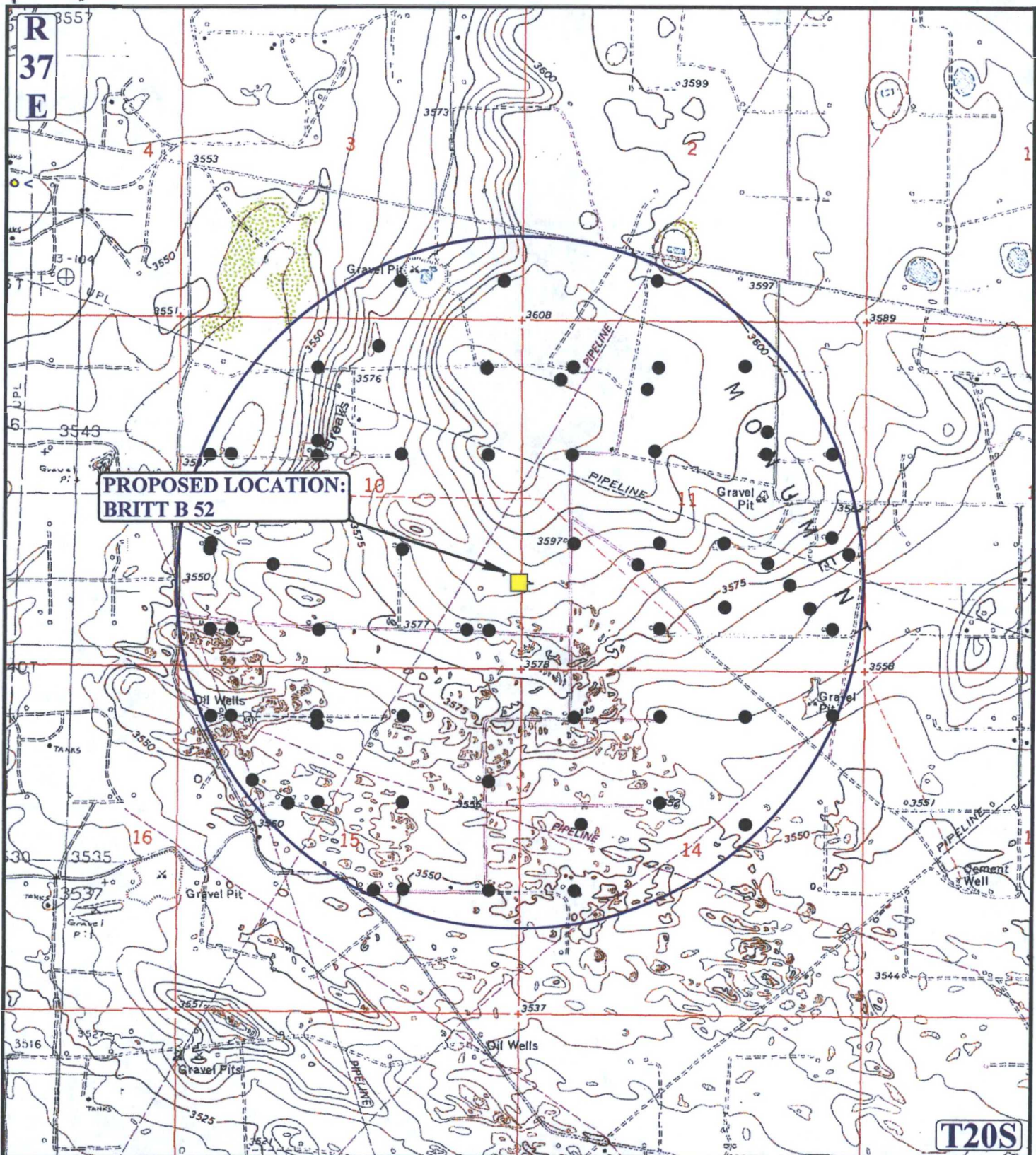
ACCESS ROAD MAP

TOPO B



UELS, LLC
 Corporate Office * 85 South 200 East
 Vernal, UT 84078 * (435) 789-1017





LEGEND:

- PRODUCING WELLS



ConocoPhillips Company

BRITT B 52
SECTION 10, T20S, R37E, N.M.P.M.
1330' FSL 10' FEL

DRAWN BY: N.W.

DATE DRAWN: 10-07-14

SCALE: 1" = 2000'

REVISED: 00-00-00

WELL PROXIMITY MAP

TOPO C



UELS, LLC
 Corporate Office * 85 South 200 East
 Vernal, UT 84078 * (435) 789-1017



APPROXIMATE TOTAL FLOW LINE DISTANCE = 7462' +/-

NOTE: PARCEL DATA SHOWN HAS BEEN OBTAINED FROM VARIOUS SOURCES AND SHOULD BE USED FOR MAPPING, GRAPHIC AND PLANNING PURPOSES ONLY. NO WARRANTY IS MADE BY UINTEH ENGINEERING AND LAND SURVEYING (UELS) FOR ACCURACY OF THE PARCEL DATA.

LEGEND:

- PROPOSED ROAD
- - - EXISTING LINE (PIPELINE/FLOW LINE)
- - - PROPOSED FLOW LINE
- - - EXISTING POWER LINE

ConocoPhillips Company

BRITT B 52
SECTION 10, T20S, R37E, N.M.P.M.
1330' FSL 10' FEL

DRAWN BY: N.W.

DATE DRAWN: 10-07-14

SCALE: 1" = 2000'

REVISED: 12-24-14 C.B.

FLOW LINE MAP

TOPO D



UELS, LLC
 Corporate Office * 85 South 200 East
 Vernal, UT 84078 * (435) 789-1017





APPROXIMATE TOTAL POWER LINE DISTANCE = 921' +/-

NOTE: PARCEL DATA SHOWN HAS BEEN OBTAINED FROM VARIOUS SOURCES AND SHOULD BE USED FOR MAPPING, GRAPHIC AND PLANNING PURPOSES ONLY. NO WARRANTY IS MADE BY UINTAH ENGINEERING AND LAND SURVEYING (UELS) FOR ACCURACY OF THE PARCEL DATA.

LEGEND:

- PROPOSED ROAD
- - - - - PROPOSED POWER LINE
- - - - - EXISTING POWER LINE

ConocoPhillips Company

BRITT B 52
SECTION 10, T20S, R37E, N.M.P.M.
1330' FSL 10' FEL



DRAWN BY: N.W.

DATE DRAWN: 10-07-14

SCALE: 1" = 2000'

REVISED: 00-00-00

POWER LINE MAP

TOPO E



UELS, LLC
 Corporate Office * 85 South 200 East
 Vernal, UT 84078 * (435) 789-1017

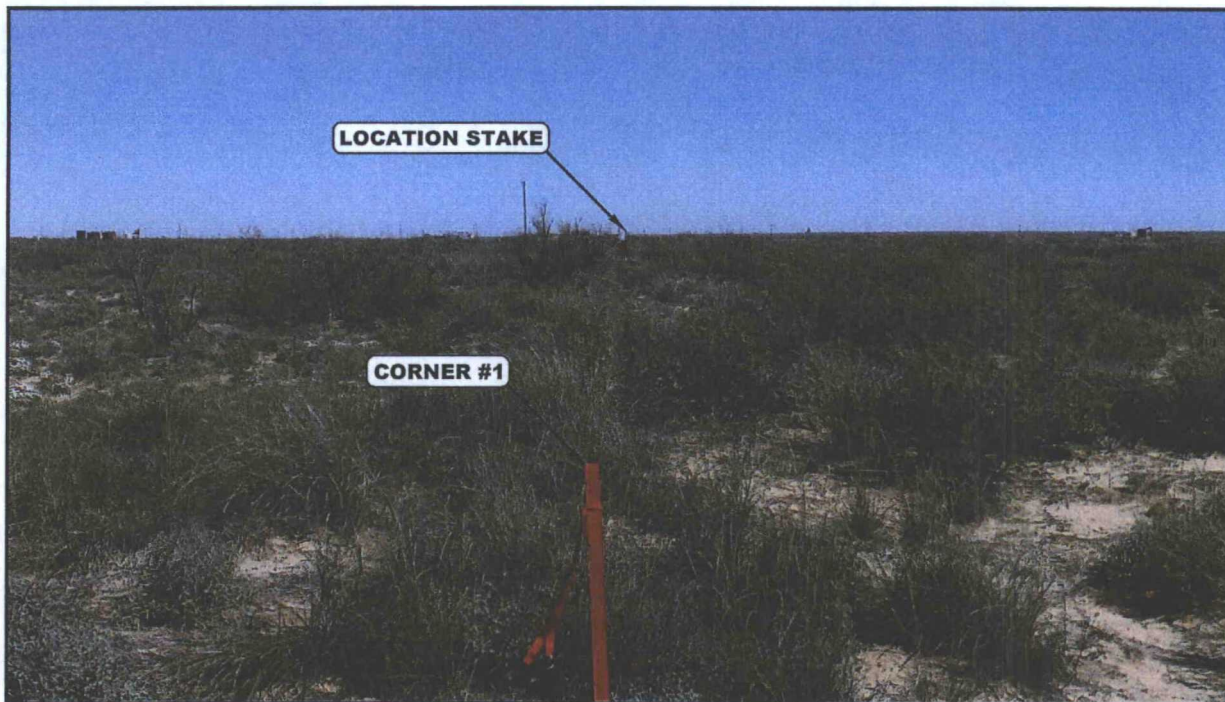


PHOTO: VIEW FROM CORNER #1 TO LOCATION STAKE

CAMERA ANGLE: EASTERLY



PHOTO: VIEW FROM BEGINNING OF PROPOSED ACCESS

CAMERA ANGLE: SOUTHEASTERLY

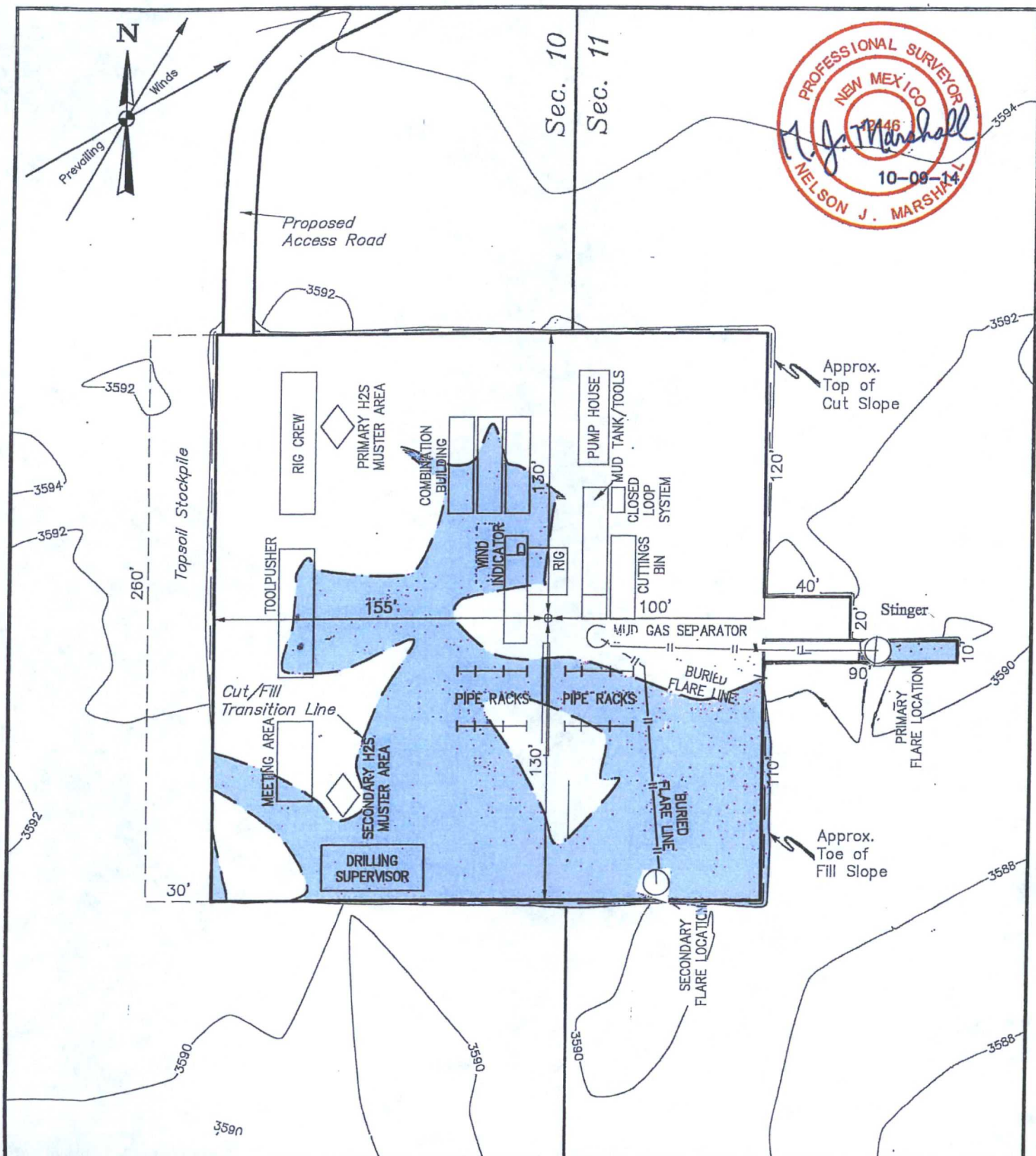
ConocoPhillips Company

BRITT B 52
SECTION 10, T20S, R37E, N.M.P.M.
1330' FSL 10' FEL



UELS, LLC
 Corporate Office * 85 South 200 East
 Vernal, UT 84078 * (435) 789-1017

DRAWN BY: N.W.	DATE DRAWN: 10-07-14
TAKEN BY: J.A.V.	REVISED: 00-00-00
LOCATION PHOTOS	PHOTO



NOTES:

- Flare pit is to be located a min. of 160' from the wellhead.
 - Contours shown at 2' intervals.
- Location may have different number of pump houses and combination buildings depending on rig used. Stinger may also not be needed.

ConocoPhillips Company

BRITT B 52
SECTION 10, T20S, R37E, N.M.P.M.
1330' FSL 10' FEL

DRAWN BY: J.J.

DATE DRAWN: 10-02-14

SCALE: 1" = 60'

REVISED: 00-00-00

TYPICAL RIG LAYOUT

FIGURE #3



UELS, LLC
 Corporate Office * 85 South 200 East
 Vernal, UT 84078 * (435) 789-1017