

District I
1625 N. French Dr., Hobbs, NM 88240
Phone: (575) 393-6161 Fax: (575) 393-0720
District II
811 S. First St., Artesia, NM 88210
Phone: (575) 748-1283 Fax: (575) 748-9720
District III
1000 Rio Brazos Road, Aztec, NM 87410
Phone: (505) 334-6178 Fax: (505) 334-6170
District IV
1220 S. St. Francis Dr., Santa Fe, NM 87505
Phone: (505) 476-3460 Fax: (505) 476-3462

State of New Mexico
Energy, Minerals & Natural Resources Department
OIL CONSERVATION DIVISION
1220 South St. Francis Dr.
Santa Fe, NM 87505

Form C-102
Revised August 1, 2011
Submit one copy to appropriate
District Office

JUL 20 2016

☐ AMENDED REPORT

RECEIVED

WELL LOCATION AND ACREAGE DEDICATION PLAT

¹ API Number 30-025-43371	² Pool Code 44500	³ Pool Name Maljamar, Yeso West
⁴ Property Code 38653	⁵ Property Name RUBY FEDERAL	⁶ Well Number 101H
⁷ OGRID No. 217817	⁸ Operator Name ConocoPhillips Company	⁹ Elevation 3987.2'

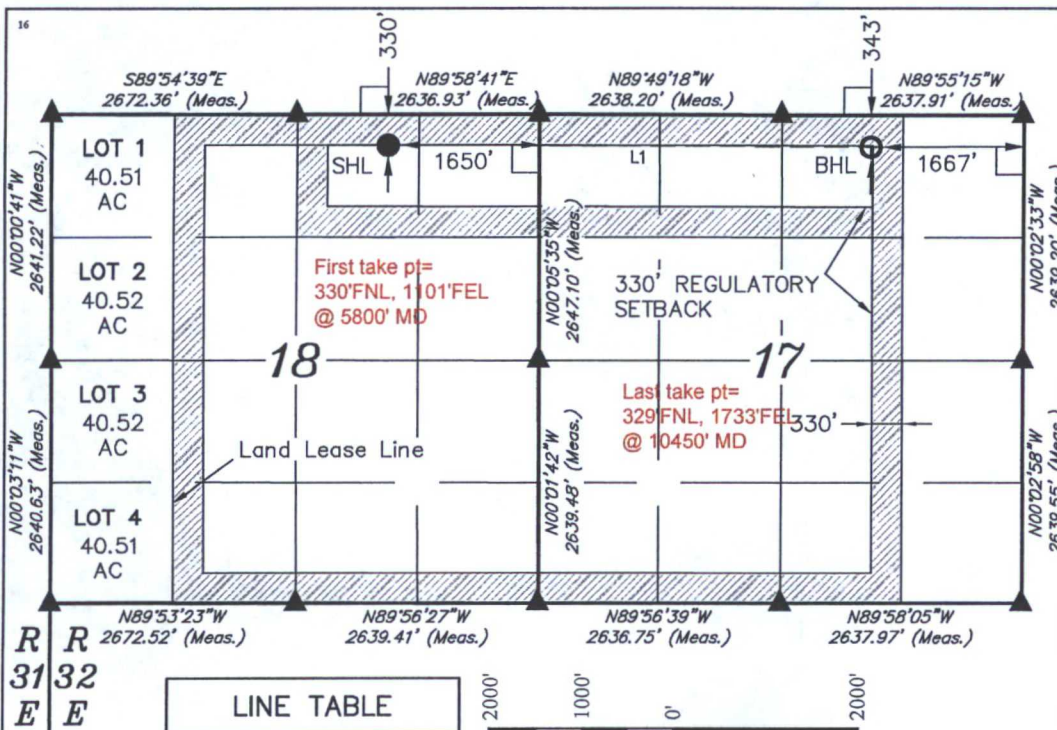
¹⁰ Surface Location

UL or lot no.	Section	Township	Range	Lot Idn	Feet from the	North/South line	Feet from the	East/West line	County
B	18	17S	32E		330	NORTH	1650	EAST	LEA

¹¹ Bottom Hole Location If Different From Surface

UL or lot no.	Section	Township	Range	Lot Idn	Feet from the	North/South line	Feet from the	East/West line	County
B	17	17S	32E		343	NORTH	1667	EAST	LEA
¹² Dedicated Acres 200	¹³ Joint or Infill	¹⁴ Consolidation Code	¹⁵ Order No.						

No allowable will be assigned to this completion until all interests have been consolidated or a non-standard unit has been approved by the division.



LINE TABLE		
LINE	DIRECTION	LENGTH
L1	S89°45'26"E	5258.66'



DRAWN BY: T.E. 04-16-15

NAD 83 (SURFACE LOCATION)	NAD 83 (BOTTOM HOLE)
LATITUDE = 32°50'27.72" (32.841033)	LATITUDE = 32°50'27.50" (32.840972)
LONGITUDE = 103°48'09.33" (103.802592)	LONGITUDE = 103°47'07.71" (103.785475)
NAD 27 (SURFACE LOCATION)	NAD 27 (BOTTOM HOLE)
LATITUDE = 32°50'27.29" (32.840914)	LATITUDE = 32°50'27.07" (32.840853)
LONGITUDE = 103°48'07.51" (103.802086)	LONGITUDE = 103°47'05.89" (103.784969)
STATE PLANE NAD 83 (N.M. EAST)	STATE PLANE NAD 83 (N.M. EAST)
N: 670109.97 E: 704342.54	N: 670114.92 E: 709599.90
STATE PLANE NAD 27 (N.M. EAST)	STATE PLANE NAD 27 (N.M. EAST)
N: 670045.70 E: 663164.16	N: 670050.60 E: 668421.58

¹⁷ OPERATOR CERTIFICATION

I hereby certify that the information contained herein is true and complete to the best of my knowledge and belief, and that this organization either owns a working interest or unleased mineral interest in the land including the proposed bottom hole location or has a right to drill this well at this location pursuant to a contract with an owner of such a mineral or working interest, or to a voluntary pooling agreement or a compulsory pooling order heretofore entered by the division.

Susan B. Maunder 9/20/15
Signature Date

Susan B. Maunder
Printed Name

Susan.B.Maunder@cop.com
E-mail Address

¹⁸ SURVEYOR CERTIFICATION

I hereby certify that the well location shown on this plat was plotted from field notes of actual surveys made by me or under my supervision, and that the same is true and correct to the best of my belief.

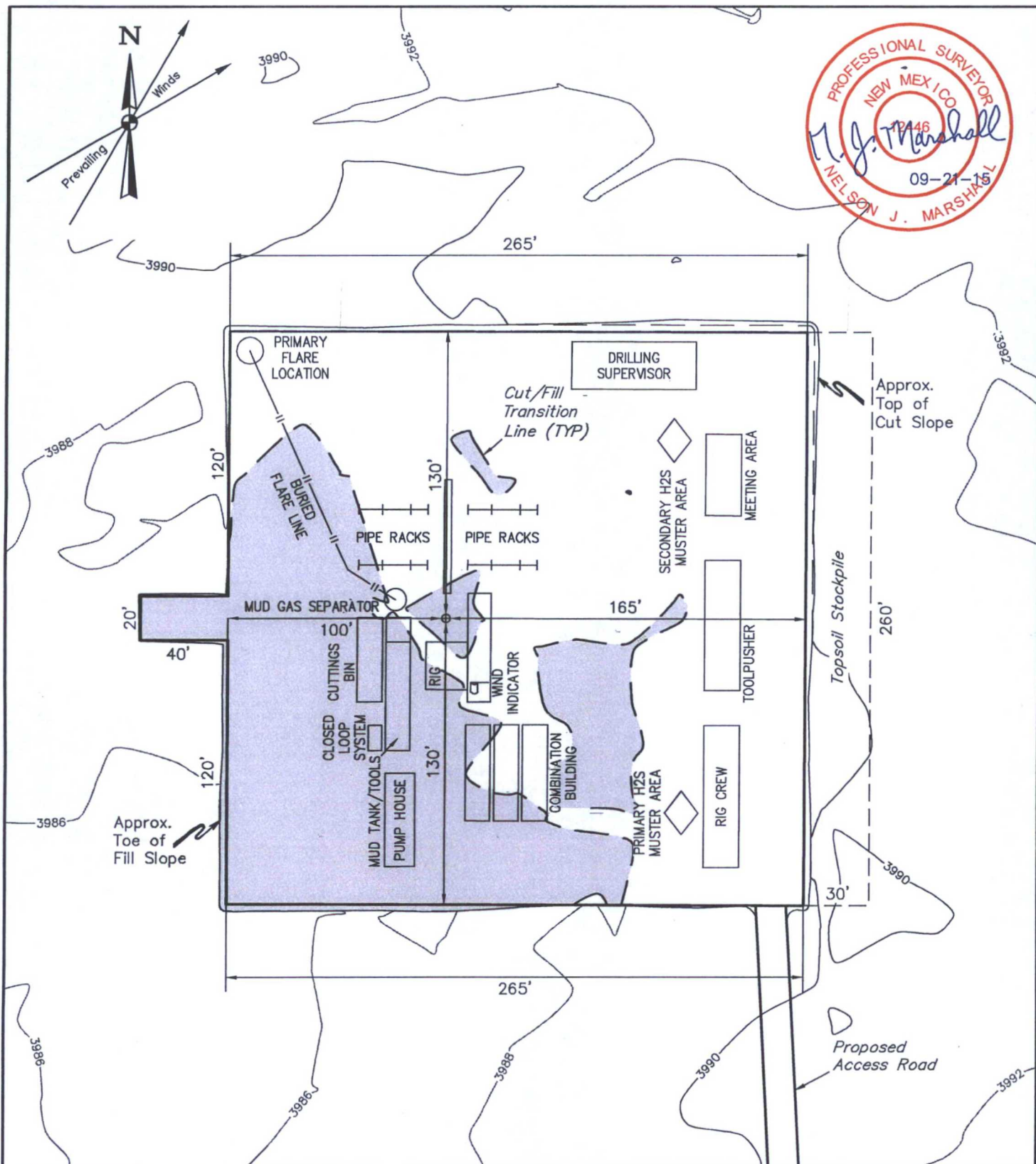
April 02, 2015

Date of Survey
Signature and Seal of Professional Surveyor:



Certificate Number:

▲ = SECTION CORNERS LOCATED.



NOTES:

- Flare pit is to be located a min. of 160' from the wellhead.
- Contours shown at 2' intervals.

ConocoPhillips Company

**RUBY FEDERAL 101H
SECTION 18, T17S, R32E, N.M.P.M.
330' FNL 1650' FEL
LEA COUNTY, NEW MEXICO**

DRAWN BY: T.E.

DATE DRAWN: 04-15-15

SCALE: 1" = 60'

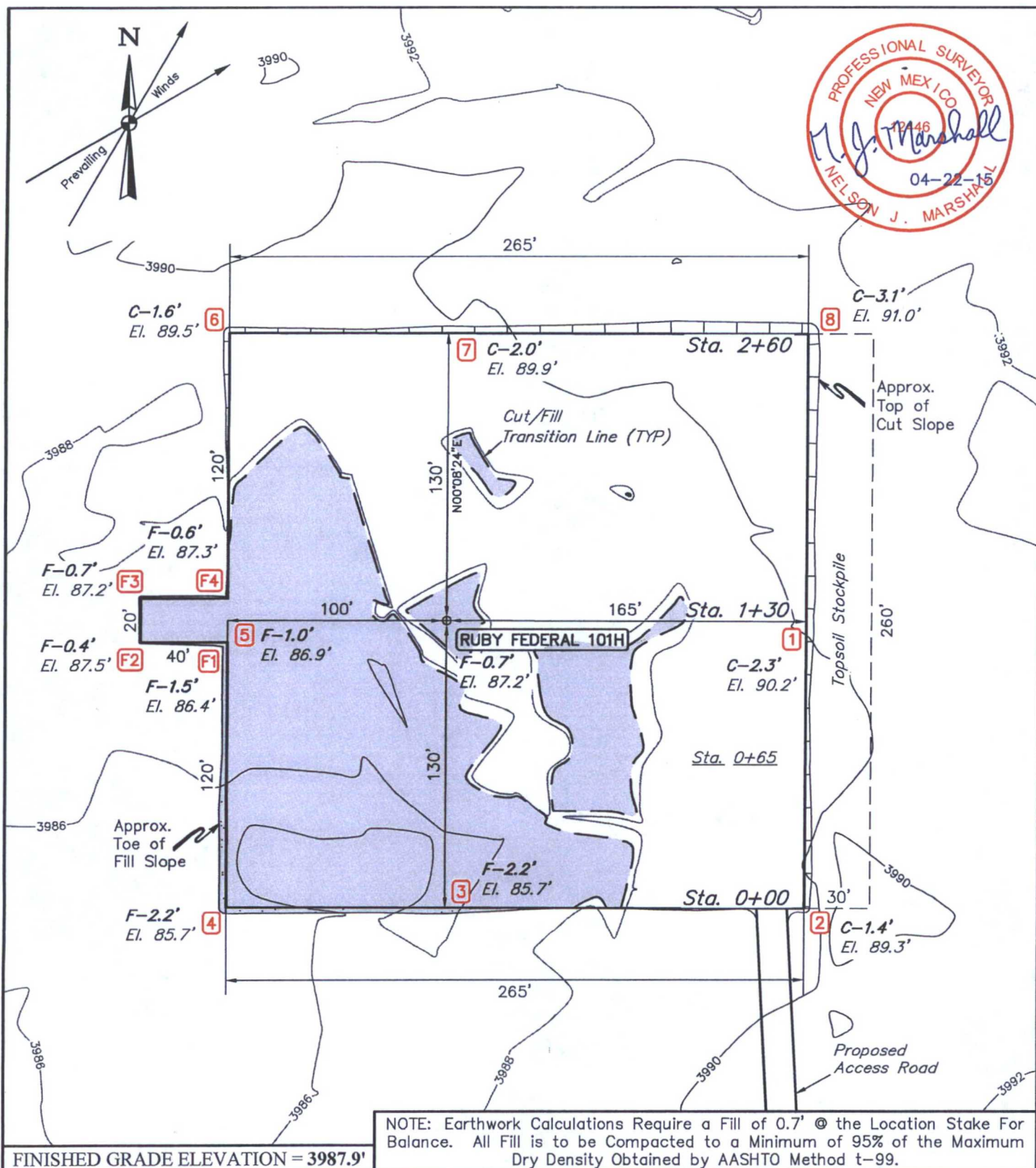
REVISED: 09-21-15

TYPICAL RIG LAYOUT

FIGURE #3



UELS, LLC
Corporate Office * 85 South 200 East
Vernal, UT 84078 * (435) 789-1017



NOTES:

- Flare pit is to be located a min. of 100' from the wellhead.
- Contours shown at 2' intervals.

ConocoPhillips Company

RUBY FEDERAL 101H
SECTION 18, T17S, R32E, N.M.P.M.
330' FNL 1650' FEL
LEA COUNTY, NEW MEXICO

DRAWN BY: T.E.

DATE DRAWN: 04-15-15

SCALE: 1" = 60'

REVISED: 00-00-00

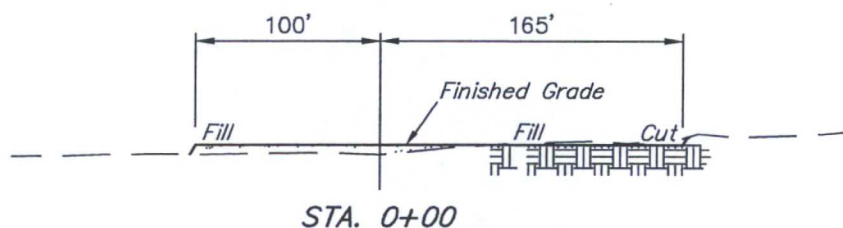
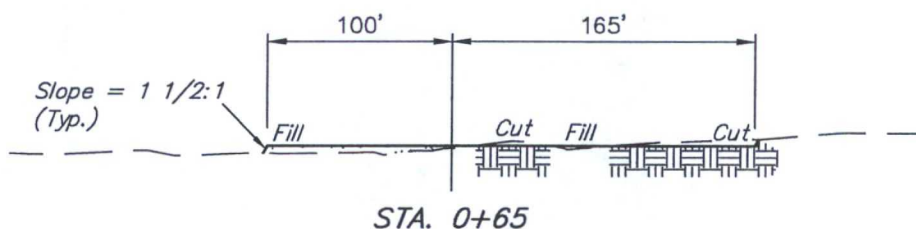
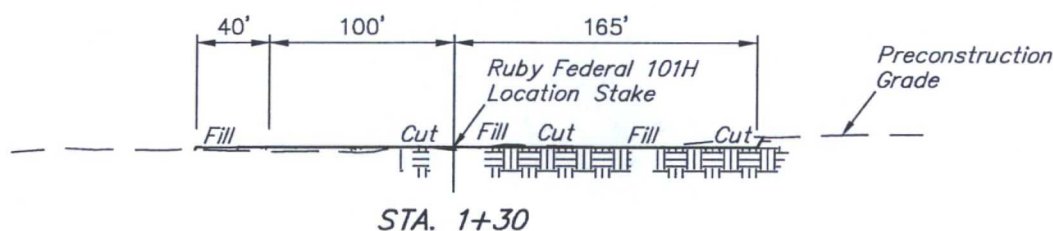
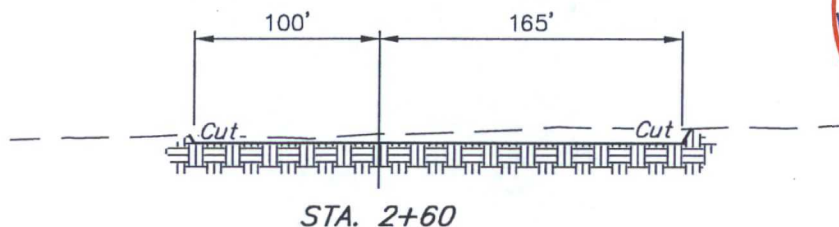
LOCATION LAYOUT

FIGURE #1



UELS, LLC
 Corporate Office * 85 South 200 East
 Vernal, UT 84078 * (435) 789-1017

X-Section
Scale
1" = 40'
1" = 100'



APPROXIMATE EARTHWORK QUANTITIES	
(6") TOPSOIL STRIPPING	670 Cu. Yds.
REMAINING LOCATION	1,400 Cu. Yds.
TOTAL CUT	2,070 Cu. Yds.
FILL	1,400 Cu. Yds.
EXCESS MATERIAL	670 Cu. Yds.
TOPSOIL	670 Cu. Yds.
EXCESS UNBALANCE (After Interim Rehabilitation)	0 Cu. Yds.

APPROXIMATE SURFACE DISTURBANCE AREAS		
	DISTANCE	ACRES
WELL SITE DISTURBANCE	NA	±1.825
30' WIDE ACCESS ROAD R-O-W DISTURBANCE	±274.95'	±0.189
10' WIDE FLOW LINE R-O-W DISTURBANCE	±4535.24'	±1.041
10' WIDE POWER LINE R-O-W DISTURBANCE	±278.39'	±0.064
TOTAL SURFACE USE AREA		±3.119

NOTES:

- Fill quantity includes 5% for compaction.
- Calculations based on 3" of topsoil stripping.
- Topsoil should not be stripped below finished grade on substructure area.

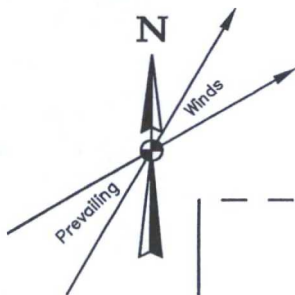
ConocoPhillips Company

RUBY FEDERAL 101H
SECTION 18, T17S, R32E, N.M.P.M.
330' FNL 1650' FEL
LEA COUNTY, NEW MEXICO

DRAWN BY: T.E.	DATE DRAWN: 04-15-15
SCALE: AS SHOWN	REVISED: 00-00-00
TYPICAL CROSS SECTIONS	FIGURE #2

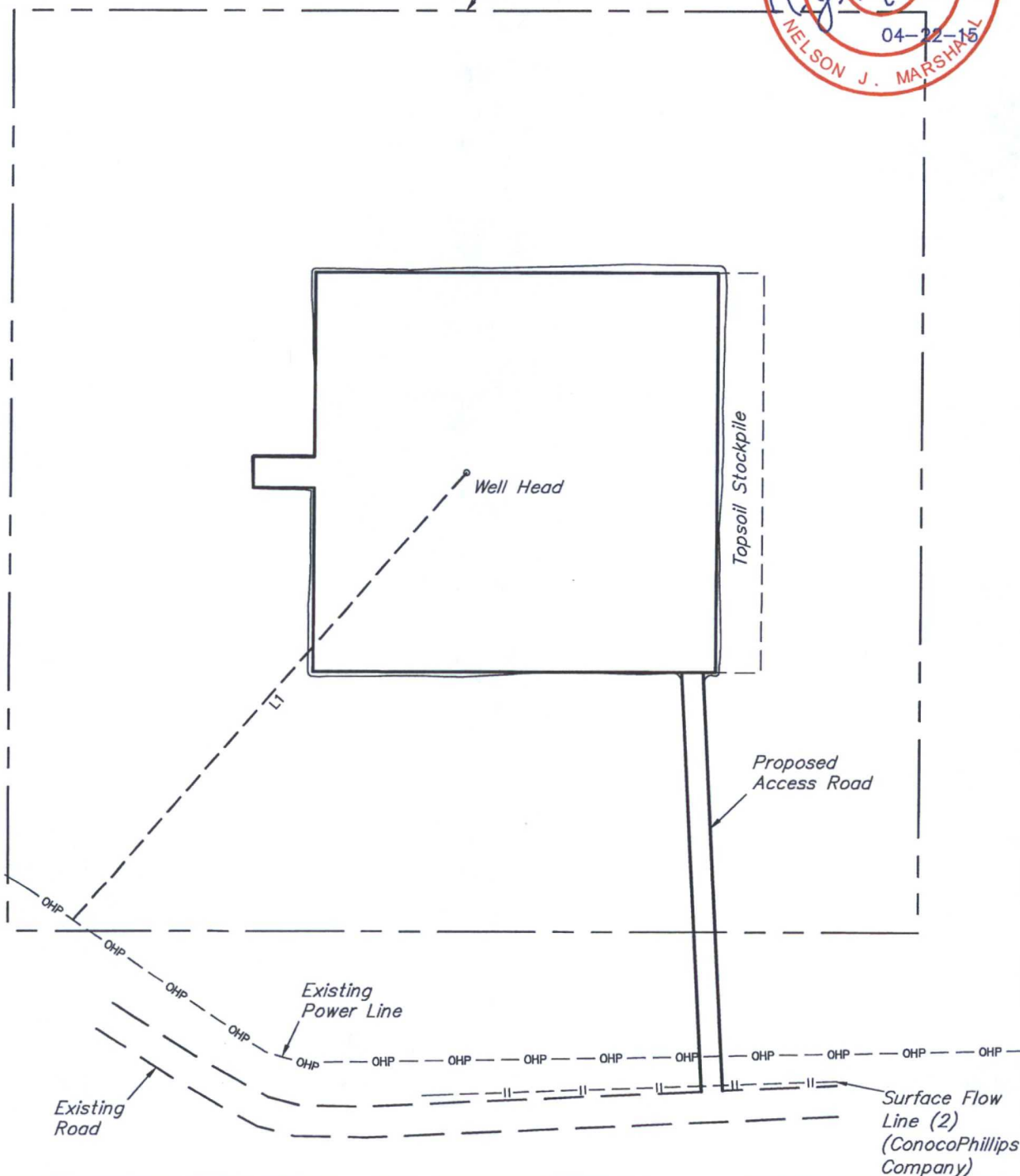


UELS, LLC
Corporate Office * 85 South 200 East
Vernal, UT 84078 * (435) 789-1017



LINE TABLE		
LINE	DIRECTION	LENGTH
L1	S41°25'32"W	389.59'

600' X 600'
Archaeological Survey
Boundary



NOTES:

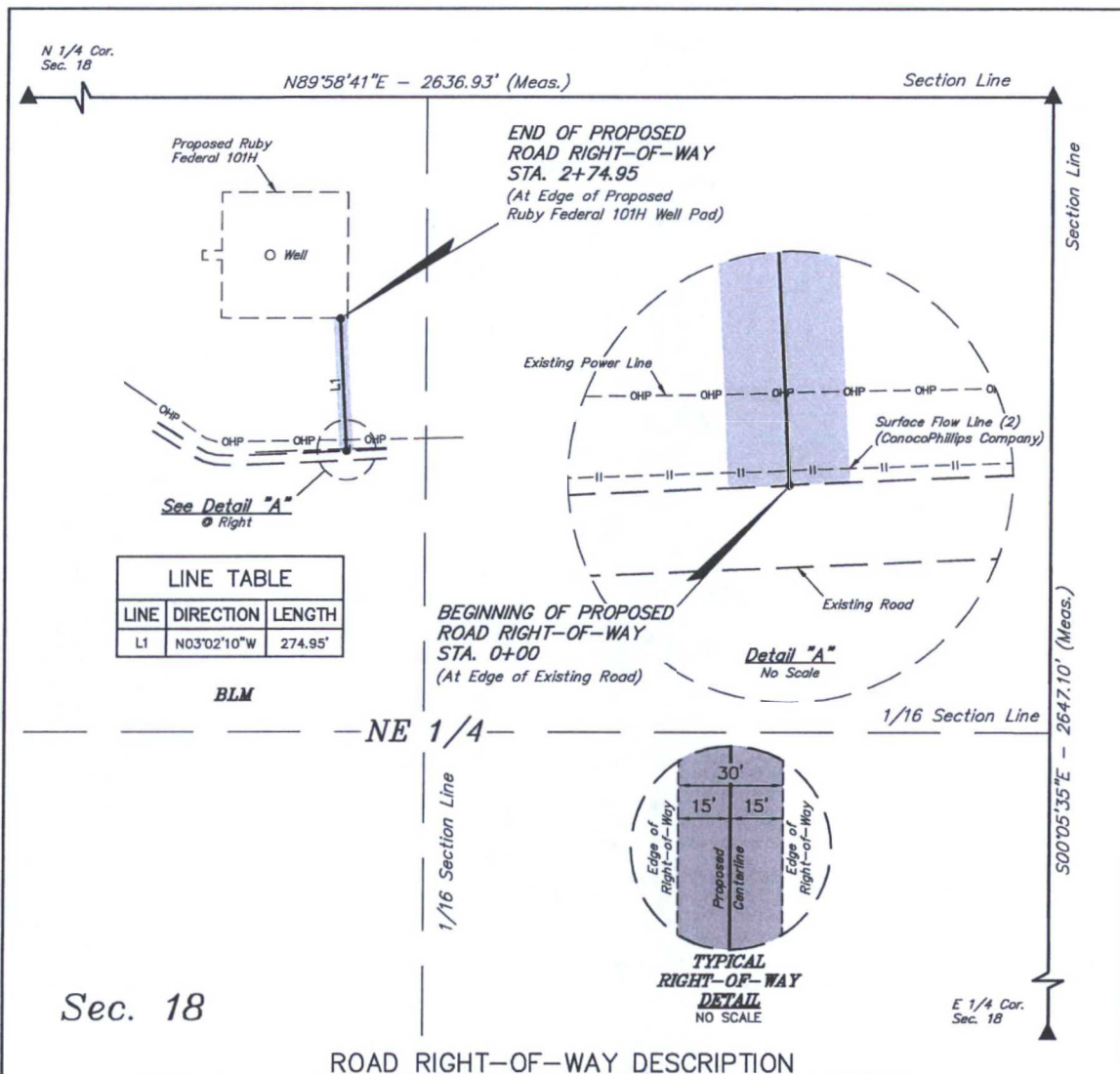
ConocoPhillips Company

**RUBY FEDERAL 101H
SECTION 18, T17S, R32E, N.M.P.M.
330' FNL 1650' FEL
LEA COUNTY, NEW MEXICO**



UELS, LLC
Corporate Office * 85 South 200 East
Vernal, UT 84078 * (435) 789-1017

DRAWN BY: T.E.	DATE DRAWN: 04-15-15
SCALE: 1" = 100'	REVISED: 00-00-00
ARCHAEOLOGICAL SURVEY BOUNDARY	
FIGURE #5	



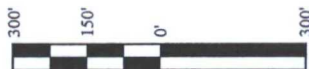
ROAD RIGHT-OF-WAY DESCRIPTION

A 30' WIDE RIGHT-OF-WAY 15' ON EACH SIDE OF THE FOLLOWING DESCRIBED CENTERLINE.

BEGINNING AT A POINT IN THE NW 1/4 NE 1/4 OF SECTION 18, T17S, R32E, N.M.P.M., WHICH BEARS S57°28'17"E 1366.06' FROM THE NORTH 1/4 CORNER OF SAID SECTION 17, THENCE N03°02'10"W 274.95' TO A POINT IN THE NW 1/4 NE 1/4 OF SAID SECTION 18, WHICH BEARS S67°58'36"E 1226.70' FROM THE NORTH 1/4 CORNER OF SAID SECTION 18. THE SIDE LINES OF SAID DESCRIBED RIGHT-OF-WAY BEING SHORTENED OR ELONGATED TO MEET THE GRANTOR'S PROPERTY LINES. BASIS OF BEARINGS IS A G.P.S. OBSERVATION. CONTAINS 0.189 ACRES MORE OR LESS.

BEGINNING OF ROAD STA. 0+00 BEARS S57°28'17"E 1366.06' FROM THE NORTH 1/4 CORNER OF SECTION 18, T17S, R32E, N.M.P.M.

END OF ROAD STA. 2+74.95 BEARS S67°58'36"E 1226.70' FROM THE NORTH 1/4 CORNER OF SECTION 18, T17S, R32E, N.M.P.M.



RIGHT-OF-WAY LENGTHS

PROPERTY OWNER	FEET	RODS	ACRES
NE 1/4 SEC 18 BLM	274.95	16.66	0.189

▲ = SECTION CORNERS LOCATED.

NOTES:

- The maximum grade of existing ground for the proposed access road is ±1%.

CERTIFICATE
THIS IS TO CERTIFY THAT THE ABOVE PLAT WAS PREPARED FROM FIELD NOTES OF ACTUAL SURVEYS MADE BY ME OR UNDER MY SUPERVISION AND THAT THE SAME ARE TRUE AND CORRECT TO THE BEST OF MY KNOWLEDGE AND BELIEF.

12446
Nelson J. Marshall
REGISTERED LAND SURVEYOR
REGISTRATION NO. 12446
STATE OF NEW MEXICO
04-22-15

ConocoPhillips Company

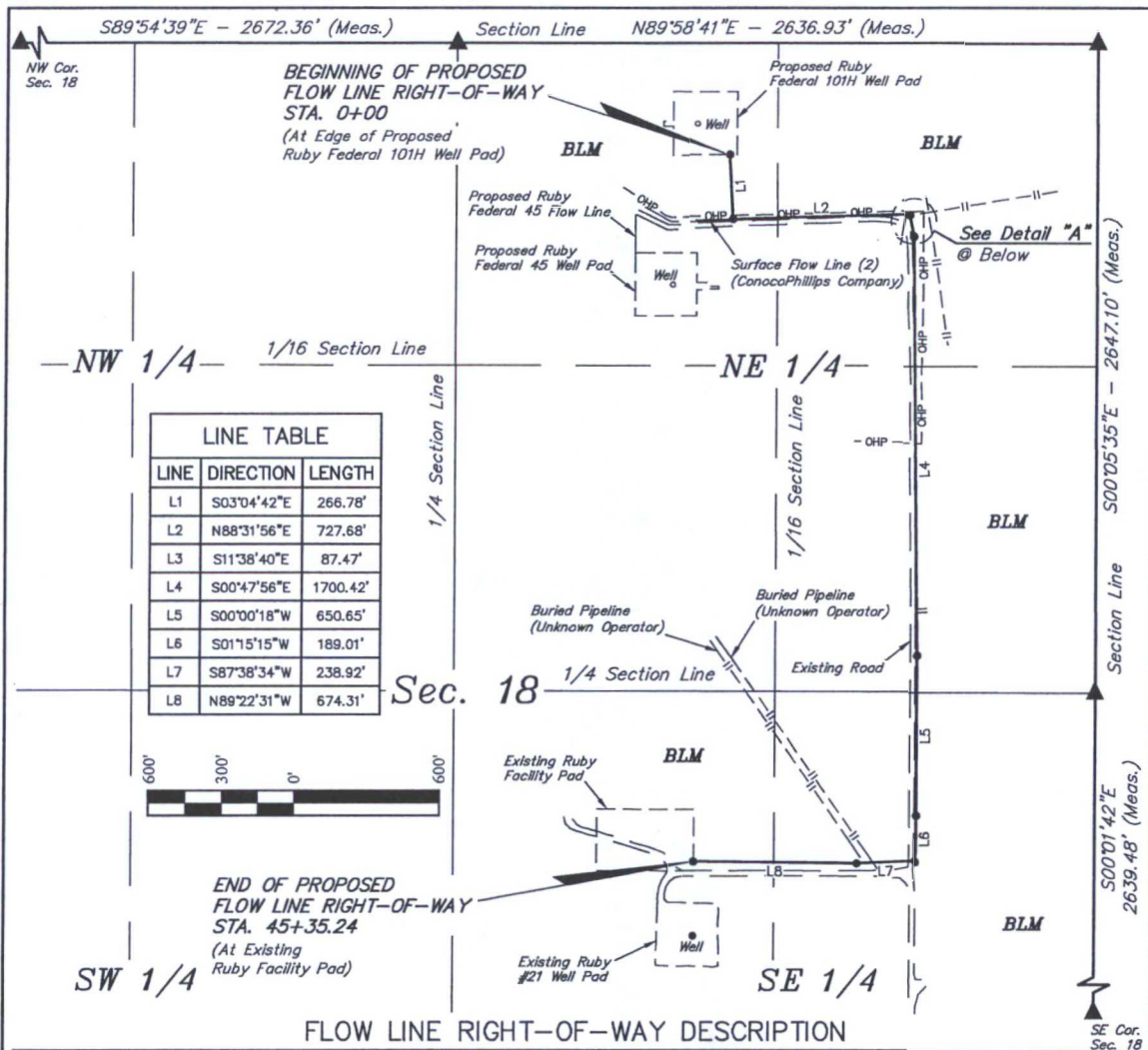
RUBY FEDERAL 101H
SECTION 18, T17S, R32E, N.M.P.M.
LEA COUNTY, NEW MEXICO

DRAWN BY: T.E. DATE DRAWN: 04-15-15
SCALE: 1" = 300' REVISED: 00-00-00

ACCESS ROAD R-O-W



UELS, LLC
Corporate Office * 85 South 200 East
Vernal, UT 84078 * (435) 789-1017



Flow line right-of-way description.

A 10' WIDE RIGHT-OF-WAY 5' ON EACH SIDE OF THE FOLLOWING DESCRIBED CENTERLINE.

BEGINNING AT A POINT IN THE NW 1/4 NE 1/4 OF SECTION 18, T17S, R32E, N.M.P.M., WHICH BEARS S67°42'45"E 1212.79' FROM THE NORTH 1/4 CORNER OF SAID SECTION 18, THENCE S03°04'42"E 266.78'; THENCE N88°31'56"E 727.68'; THENCE S11°38'40"E 87.47'; THENCE S00°47'56"E 1700.42'; THENCE S00°00'18"W 650.65'; THENCE S01°15'15"W 189.01'; THENCE S87°38'34"W 238.92'; THENCE N89°22'31"W 674.31' TO A POINT IN THE NW 1/4 SE 1/4 OF SAID SECTION 18, WHICH BEARS S67°21'18"W 1791.18' FROM THE EAST 1/4 CORNER OF SAID SECTION 18. THE SIDE LINES OF SAID DESCRIBED RIGHT-OF-WAY BEING SHORTENED OR ELONGATED TO MEET THE GRANTOR'S PROPERTY LINES. BASIS OF BEARINGS IS A G.P.S. OBSERVATION. CONTAINS 1.041 ACRES MORE OR LESS.

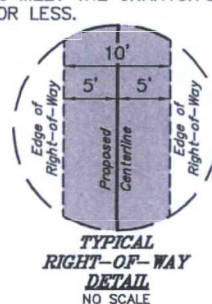
BEGINNING OF PIPELINE STA. 0+00 BEARS S67°42'45"E 1212.79' FROM THE NORTH 1/4 CORNER OF SECTION 18, T17S, R32E, N.M.P.M.

END OF PIPELINE STA. 45+35.24 BEARS S67°21'18"W 1791.18' FROM THE EAST 1/4 CORNER OF SECTION 18, T17S, R32E, N.M.P.M.

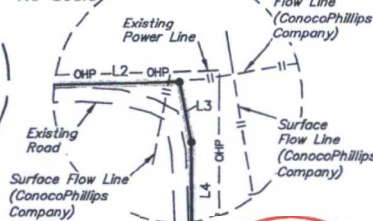
RIGHT-OF-WAY LENGTHS			
PROPERTY OWNER	FEET	RODS	ACRES
NE 1/4 SEC 18 BLM	2933.55	177.79	0.673
SE 1/4 SEC 18 BLM	1601.69	97.07	0.368
TOTAL ON BLM	4535.24	274.86	1.041

▲ = SECTION CORNERS LOCATED.

NOTES:



Detail "A"
No Scale



THIS IS TO CERTIFY THAT THE ABOVE PLAT WAS PREPARED FROM A FIELD NOTES OF ACTUAL SURVEYS MADE BY ME OR UNDER MY SUPERVISION AND THAT THE SAME ARE TRUE AND CORRECT TO THE BEST OF MY KNOWLEDGE AND BELIEF.

CERTIFICATE

REGISTERED LAND SURVEYOR
REGISTRATION NO. 12446
STATE OF NEW MEXICO

04-22-15

ConocoPhillips Company

RUBY FEDERAL 101H
SECTION 18, T17S, R32E, N.M.P.M.
LEA COUNTY, NEW MEXICO

DRAWN BY: T.E.

DATE DRAWN: 04-15-15

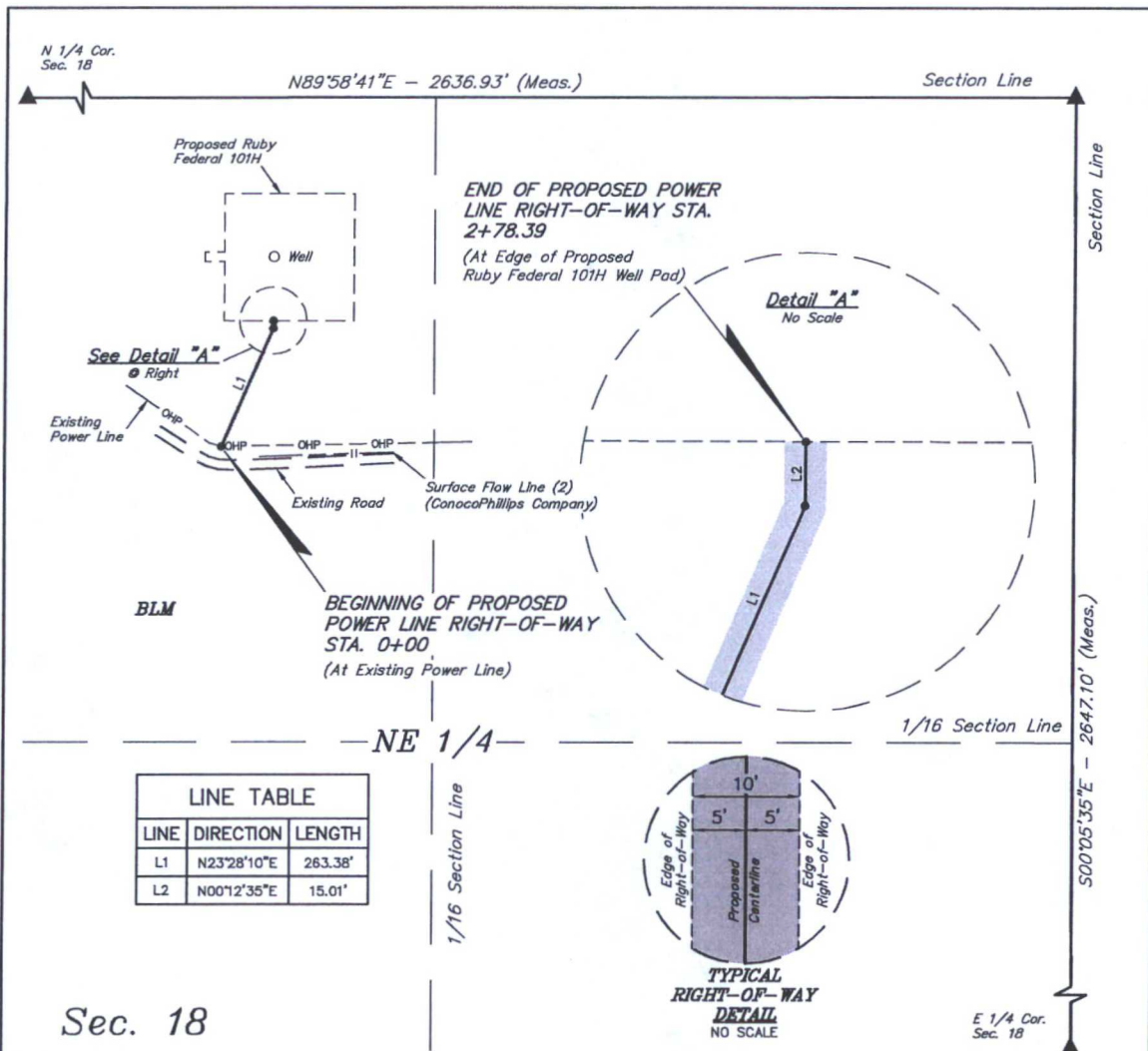
SCALE: 1" = 600'

REVISED: 00-00-00

FLOW LINE R-O-W



UELS, LLC
Corporate Office * 85 South 200 East
Vernal, UT 84078 * (435) 789-1017



Sec. 18

POWER LINE RIGHT-OF-WAY DESCRIPTION

A 10' WIDE RIGHT-OF-WAY 5' ON EACH SIDE OF THE FOLLOWING DESCRIBED CENTERLINE.

BEGINNING AT A POINT IN THE NW 1/4 NE 1/4 OF SECTION 18, T17S, R32E, N.M.P.M., WHICH BEARS S50°55'47"E 1136.37' FROM THE NORTH 1/4 CORNER OF SAID SECTION 18, THENCE N23°28'10"E 263.38'; THENCE N00°12'35"E 15.01' TO A POINT IN THE NW 1/4 NE 1/4 OF SAID SECTION 18, WHICH BEARS S65°02'04"E 1088.94' FROM THE NORTH 1/4 CORNER OF SAID SECTION 18. THE SIDE LINES OF SAID DESCRIBED RIGHT-OF-WAY BEING SHORTENED OR ELONGATED TO MEET THE GRANTOR'S PROPERTY LINES. BASIS OF BEARINGS IS A G.P.S. OBSERVATION. CONTAINS 0.064 ACRES MORE OR LESS.

BEGINNING OF POWER LINE STA. 0+00 BEARS S50°55'47"E 1136.37' FROM THE NORTH 1/4 CORNER OF SECTION 18, T17S, R32E, N.M.P.M.

END OF POWER LINE STA. 2+78.39 BEARS S65°02'04"E 1088.94' FROM THE NORTH 1/4 CORNER OF SECTION 18, T17S, R32E, N.M.P.M.



RIGHT-OF-WAY LENGTHS

PROPERTY OWNER	FEET	RODS	ACRES
NE 1/4 SEC 18 BLM	278.39	16.87	0.064

▲ = SECTION CORNERS LOCATED.

NOTES:

CERTIFICATE OF PROFESSIONAL SURVEYOR
THIS IS TO CERTIFY THAT THE ABOVE PLAT WAS PREPARED FROM A FIELD NOTES OF ACTUAL SURVEYS MADE BY ME OR UNDER MY SUPERVISION AND THAT THE SAME ARE TRUE AND CORRECT TO THE BEST OF MY KNOWLEDGE AND BELIEF.

12446
Nelson J. Marshall
REGISTERED LAND SURVEYOR
REGISTRATION NO. 12446
STATE OF NEW MEXICO

04-22-15

ConocoPhillips Company

RUBY FEDERAL 101H
SECTION 18, T17S, R32E, N.M.P.M.
LEA COUNTY, NEW MEXICO

DRAWN BY: T.E. DATE DRAWN: 04-15-15
SCALE: 1" = 300' REVISED: 00-00-00

POWER LINE R-O-W



UELS, LLC
Corporate Office * 85 South 200 East
Vernal, UT 84078 * (435) 789-1017

BEGINNING AT THE INTERSECTION OF U.S. HIGHWAY 82 AND MALJAMAR ROAD/COUNTY ROAD 126, PROCEED IN A WESTERLY, THEN SOUTHWESTERLY DIRECTION FROM MALLJAMAR, NEW MEXICO ALONG U.S. HIGHWAY 82 APPROXIMATELY 4.3 MILES TO THE JUNCTION OF THIS ROAD AND COUNTY ROAD 224/ RIPPLE ROAD TO THE SOUTHEAST; TURN LEFT AND PROCEED IN A SOUTHEASTERLY DIRECTION APPROXIMATELY 0.9 MILES TO THE JUNCTION OF THIS ROAD AND AN EXISTING ROAD TO THE EAST; TURN LEFT AND PROCEED IN AN EASTERLY, THEN NORTHERLY, THEN EASTERLY DIRECTION APPROXIMATELY 1.1 MILES TO THE JUNCTION OF THIS ROAD AND AN EXISTING ROAD TO THE NORTH; TURN LEFT AND PROCEED IN A NORTHERLY, THEN WESTERLY DIRECTION APPROXIMATELY 0.9 MILES TO THE BEGINNING OF THE PROPOSED ACCESS ROAD TO THE NORTH; FOLLOW ROAD FLAGS IN A NORTHERLY DIRECTION APPROXIMATELY 275' TO THE PROPOSED LOCATION.

TOTAL DISTANCE FROM MALJAMAR, NEW MEXICO TO THE PROPOSED WELL LOCATION IS APPROXIMATELY 7.2 MILES.

ConocoPhillips Company

RUBY FEDERAL 101H
SECTION 18, T17S, R32E, N.M.P.M.
330' FNL 1650' FEL
LEA COUNTY, NEW MEXICO

DRAWN BY: B.D.

DATE DRAWN: 04-14-15

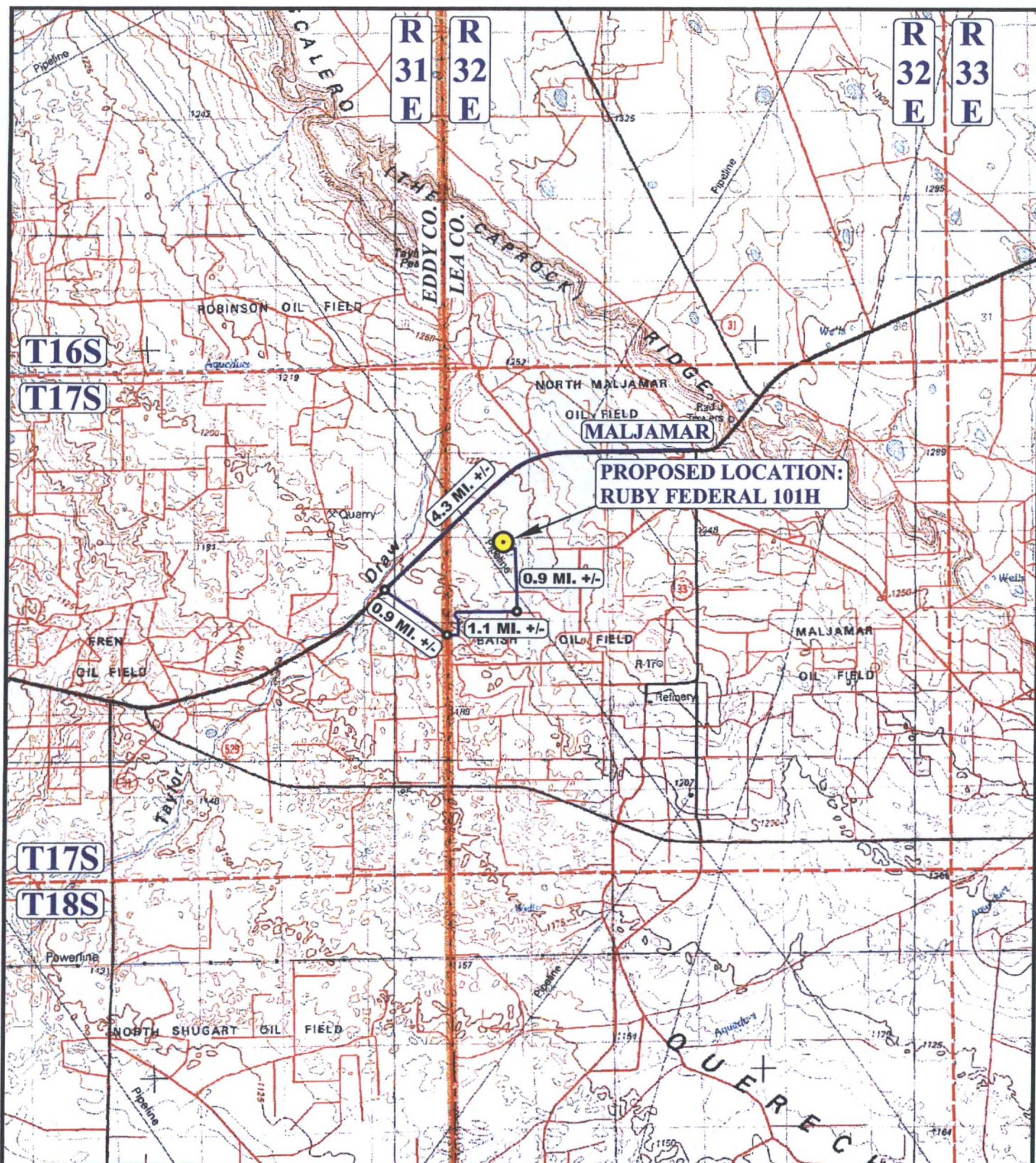
REVISED: 00-00-00

ROAD DESCRIPTION



UELS, LLC

Corporate Office * 85 South 200 East
Vernal, UT 84078 * (435) 789-1017



LEGEND:

 PROPOSED LOCATION

ConocoPhillips Company

RUBY FEDERAL 101H
SECTION 18, T17S, R32E, N.M.P.M.
330' FNL 1650' FEL
LEA COUNTY, NEW MEXICO



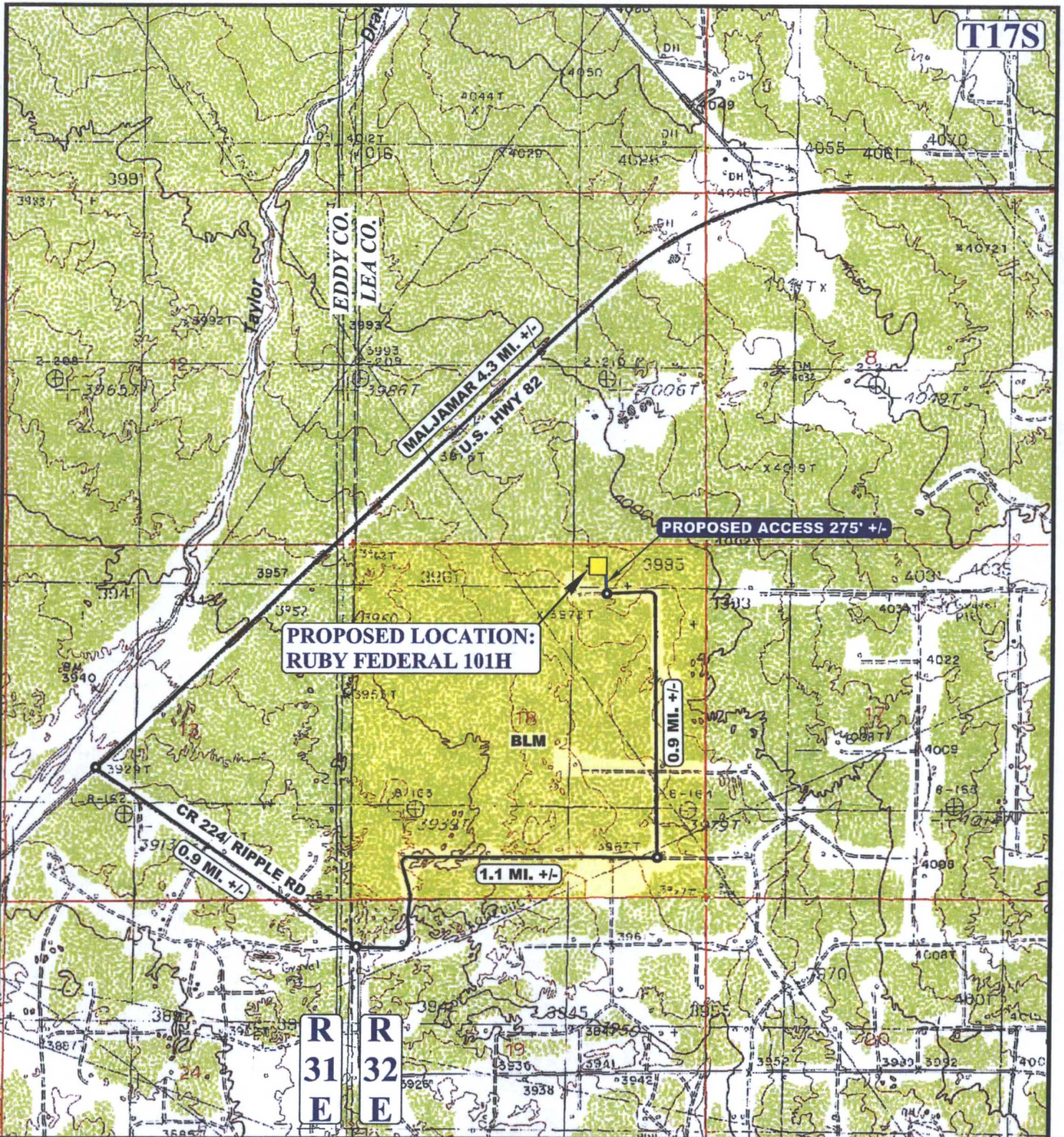
UELS, LLC
Corporate Office * 85 South 200 East
Vernal, UT 84078 * (435) 789-1017

DRAWN BY: B.D.
SCALE: 1:100,000

DATE DRAWN: 04-14-15
REVISED: 00-00-00

ACCESS ROAD MAP

TOPO A



NOTE: PARCEL DATA SHOWN HAS BEEN OBTAINED FROM VARIOUS SOURCES AND SHOULD BE USED FOR MAPPING, GRAPHIC AND PLANNING PURPOSES ONLY. NO WARRANTY IS MADE BY UINTAH ENGINEERING AND LAND SURVEYING (UELS) FOR ACCURACY OF THE PARCEL DATA.

LEGEND:

— EXISTING ROAD
 - - - PROPOSED ROAD

ConocoPhillips Company

RUBY FEDERAL 101H
 SECTION 18, T17S, R32E, N.M.P.M.
 330' FNL 1650' FEL
 LEA COUNTY, NEW MEXICO

DRAWN BY: B.D.

DATE DRAWN: 04-14-15

SCALE: 1" = 2000'

REVISED: 00-00-00

ACCESS ROAD MAP

TOPO B



UELS, LLC
 Corporate Office * 85 South 200 East
 Vernal, UT 84078 * (435) 789-1017





LEGEND:

- DISPOSAL WELLS
- PRODUCING WELLS
- SHUT IN WELLS
- ABANDONED WELLS
- TEMPORARILY ABANDONED



UELS, LLC
Corporate Office * 85 South 200 East
Vernal, UT 84078 * (435) 789-1017



ConocoPhillips Company

RUBY FEDERAL 101H
SECTION 18, T17S, R32E, N.M.P.M.
330' FNL 1650' FEL
LEA COUNTY, NEW MEXICO

DRAWN BY: B.D.

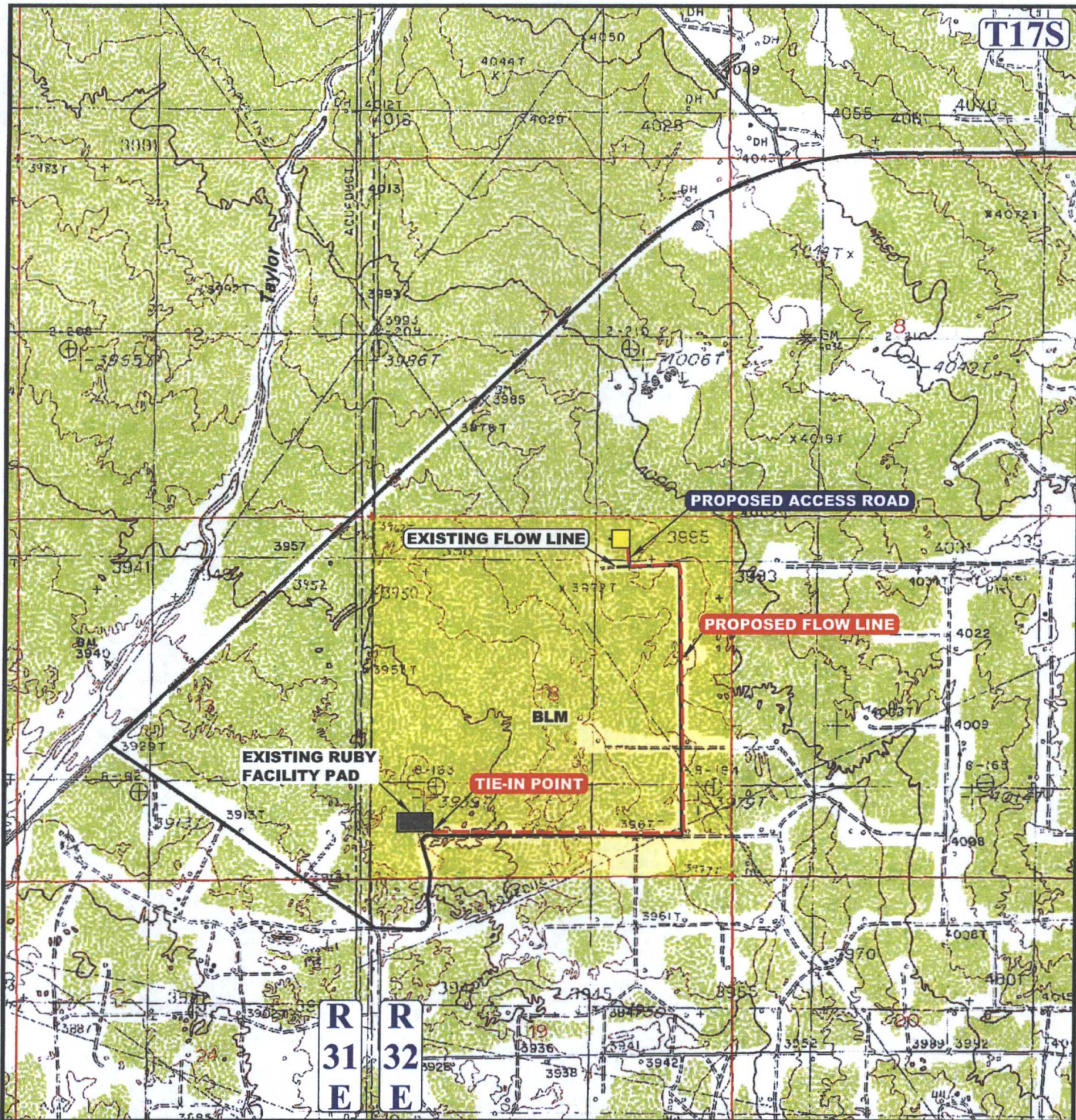
DATE DRAWN: 04-14-15

SCALE: 1" = 2000'

REVISED: 00-00-00

WELL PROXIMITY MAP

TOPO C



APPROXIMATE TOTAL FLOW LINE DISTANCE = 4,535' +/-

NOTE: PARCEL DATA SHOWN HAS BEEN OBTAINED FROM VARIOUS SOURCES AND SHOULD BE USED FOR MAPPING, GRAPHIC AND PLANNING PURPOSES ONLY. NO WARRANTY IS MADE BY UINTAH ENGINEERING AND LAND SURVEYING (UELS) FOR ACCURACY OF THE PARCEL DATA.

LEGEND:

- EXISTING ROAD
- PROPOSED ROAD
- - - PROPOSED FLOW LINE
- - - EXISTING FLOW LINE

ConocoPhillips Company

RUBY FEDERAL 101H
SECTION 18, T17S, R32E, N.M.P.M.
330' ENL 1650' FEL
LEA COUNTY, NEW MEXICO



DRAWN BY: B.D.

DATE DRAWN: 04-14-15

SCALE: 1" = 2000'

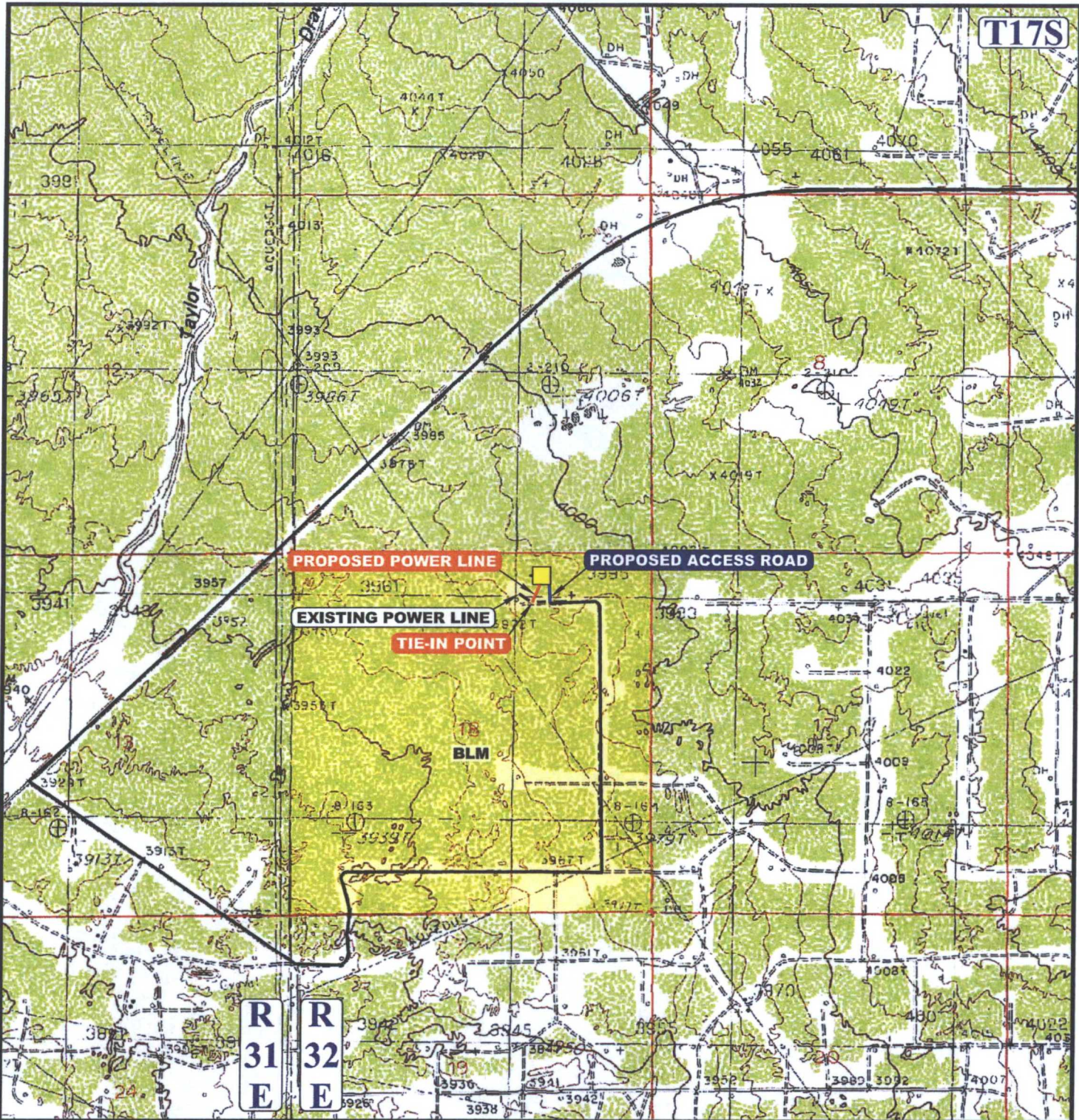
REVISED: 00-00-00

PIPELINE MAP

TOPO D



UELS, LLC
Corporate Office * 85 South 200 East
Vernal, UT 84078 * (435) 789-1017



APPROXIMATE TOTAL POWER LINE DISTANCE = 278' +/-

NOTE: PARCEL DATA SHOWN HAS BEEN OBTAINED FROM VARIOUS SOURCES AND SHOULD BE USED FOR MAPPING, GRAPHIC AND PLANNING PURPOSES ONLY. NO WARRANTY IS MADE BY UINTAH ENGINEERING AND LAND SURVEYING (UELS) FOR ACCURACY OF THE PARCEL DATA.

LEGEND:

- EXISTING ROAD
- PROPOSED ROAD
- PROPOSED POWER LINE
- EXISTING POWER LINE

ConocoPhillips Company

RUBY FEDERAL 101H
SECTION 18, T17S, R32E, N.M.P.M.
330' FNL 1650' FEL
LEA COUNTY, NEW MEXICO



DRAWN BY: B.D.

DATE DRAWN: 04-14-15

SCALE: 1" = 2000'

REVISED: 00-00-00

POWER LINE MAP

TOPO E



UELS, LLC
Corporate Office * 85 South 200 East
Vernal, UT 84078 * (435) 789-1017

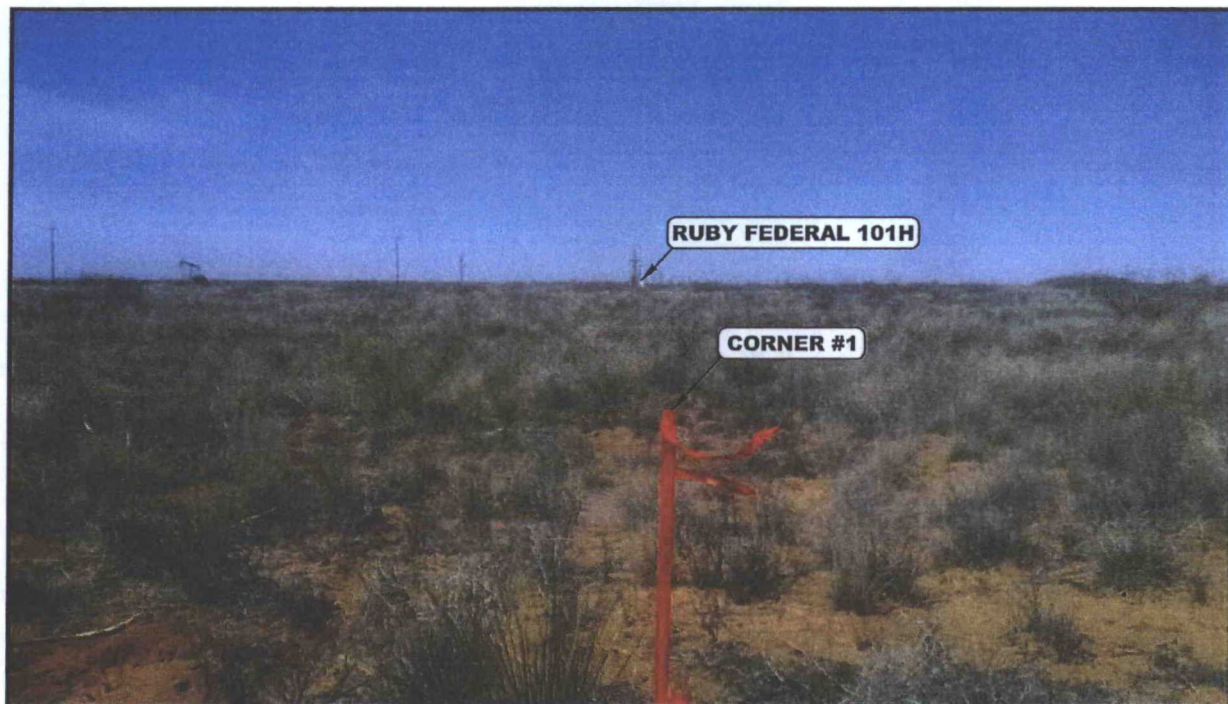


PHOTO: VIEW FROM CORNER #1 TO LOCATION STAKE

CAMERA ANGLE: WESTERLY



PHOTO: VIEW FROM BEGINNING OF PROPOSED ACCESS

CAMERA ANGLE: NORTHERLY

ConocoPhillips Company

RUBY FEDERAL 101H
SECTION 18, T17S, R32E, N.M.P.M.
330' FNL 1650' FEL
LEA COUNTY, NEW MEXICO



UELS, LLC
Corporate Office * 85 South 200 East
Vernal, UT 84078 * (435) 789-1017

DRAWN BY: B.D.

DATE DRAWN: 04-14-15

TAKEN BY: J.V.

REVISED: 00-00-00

LOCATION PHOTOS

PHOTO