

District I - (575) 393-6161

1625 N. French Dr., Hobbs, NM 88240

District II - (575) 748-1283

811 S. First St., Artesia, NM 88210

District III - (505) 334-6178

1000 Rio Brazos Rd., Aztec, NM 87410

District IV - (505) 476-3460

1220 S. St. Francis Dr., Santa Fe, NM

87505

HOBBS OCD

JUL 21 2016

RECEIVED

## OIL CONSERVATION DIVISION

1220 South St. Francis Dr.

Santa Fe, NM 87505

WELL API NO.

30-025-24331

5. Indicate Type of Lease

STATE ☒ FEE ☐

6. State Oil &amp; Gas Lease No.

7. Lease Name or Unit Agreement Name

VACUUM GRAYBURG SA ant ✓

8. Well Number #19

9. OGRID Number

4323

10. Pool name or Wildcat

VACUUM; GRAYBURG SA

## SUNDRY NOTICES AND REPORTS ON WELLS

(DO NOT USE THIS FORM FOR PROPOSALS TO DRILL OR TO DEEPEN OR PLUG BACK TO A DIFFERENT RESERVOIR. USE "APPLICATION FOR PERMIT" (FORM C-101) FOR SUCH PROPOSALS.)

1. Type of Well: Oil Well ☐ Gas Well ☐ Other INJECTION

2. Name of Operator

CHEVRON USA INC

3. Address of Operator

1616 W. BENDER BLVD HOBBS, NM 88240

4. Well Location

Unit Letter N : 1310 feet from the SOUTH line and 2540 feet from the WEST lineSection 01 Township 18S Range 34E NMPM County LEA

11. Elevation (Show whether DR, RKB, RT, GR, etc.)

3990' GL

## 12. Check Appropriate Box to Indicate Nature of Notice, Report or Other Data

## NOTICE OF INTENTION TO:

PERFORM REMEDIAL WORK ☐ PLUG AND ABANDON ☐TEMPORARILY ABANDON ☐ CHANGE PLANS ☐PULL OR ALTER CASING ☐ MULTIPLE COMPL ☐DOWNHOLE COMMINGLE ☐CLOSED-LOOP SYSTEM ☐OTHER: INTENT TO REPAIR WELL ☒

## SUBSEQUENT REPORT OF:

REMEDIAL WORK ☐ ALTERING CASING ☐COMMENCE DRILLING OPNS. ☐ P AND A ☐CASING/CEMENT JOB ☐OTHER: ☐

13. Describe proposed or completed operations. (Clearly state all pertinent details, and give pertinent dates, including estimated date of starting any proposed work). SEE RULE 19.15.7.14 NMAC. For Multiple Completions: Attach wellbore diagram of proposed completion or recompletion.

CHEVRON USA INC RESPECTFULLY REQUESTS TO REPAIR THE ABOVE WELL AFTER THE WORKOVER WE ATTEMPTED TO SQUEEZE THE CASING LEAK AND PLAN TO REPAIR WELL INSTEAD OF PLUGGING WELL PLEASE FIND ATTACHED A PROCEDURE AND A WELLBORE DIAGRAM

Condition of Approval: notify

OCD Hobbs office 24 hours

prior of running MIT Test &amp; Chart

Spud Date:

Rig Release Date:

I hereby certify that the information above is true and complete to the best of my knowledge and belief.

SIGNATURE Cindy Herrera Murillo TITLE PERMITTING SPECIALIST DATE 07/20/2016Type or print name CINDY HERRERA-MURILLO E-mail address: Cherreramurillo@chevron.com PHONE: 575-263-0431

For State Use Only

APPROVED BY: Mary G Brown TITLE Dist Supervisor DATE 7/27/2016

Conditions of Approval (if any):

**Procedure for VGSAU #19**

**30-025-24331**

MIRU workover rig and equipment

Uncover casing valves. Check pressure on all casing strings (including bradenhead).

N/D tree. N/U new casing spool for 3-1/2" liner. New spool will need to be suitable for CO2 injection.

N/U BOP. Test BOP to 250 psi low/500 psi high.

R/U rig floor and tubing handling equipment. Caliper elevators and document in WellView.

P/U 2-3/8" 4.7 #/ft. L-80 8-rd EUE workstring with RBP retrieval tool. RIH and retrieve RBP at 530'. TOOH L/D RBP

P/U 3-7/8" bit with watermelon mill and TIH to tight spot at 3,130'.

Attempt to dress tight spot with mill assembly.

Continue TIH to CIBP with cement at +/- 4,020'

Drill up cement on top of the CIBP

Circulate hole with 14.5 PPG kill fluid. TOOH with bit and mill.

P/U Wash shoe and pipe with wires. TIH and wash over CIBP and attempt to grab with wires in wash shoe. Consult with workover engineer is unfamiliar process.

TOOH L/D CIBP.

TIH with wash shoe and enough wash pipe to swallow the +/- 43' of tubing attached to the ELDER perm packer.

Burn over ELDER perm packer at 4,109'. Once packer is free TOOH.

P/U and TIH with 3-3/4" overshot with full opening top sub, mill control, packoff, and basket grapple on 2-3/8" workstring. (Have various basket grapple sizes on location due to unknown size of fish top).

Engage and latch fish top at +/- 4,066'. TOOH with fish.

P/U and TIH with 4-1/2" CBP to 4,350' and set. Spot 10' of sand on top of CBP. Test CBP to 500 psi. TOOH laying down for liner running operations.

Shut-in blind rams and change out 2-3/8" pipe rams to 3-1/2" pipe rams



R/U 3-1/2" ULTRA FJ liner running equipment. Caliper elevators and document in WellView.

P/U and RIH with 3-1/2" 9.2 #/ft. L-80 ULTRA FJ liner to +/- 4,330'. Land liner within 25' of CBP at 4,350'.

MIRU cement vendors. Pressure test lines

Cement liner per liner cementing guidelines in the workover standard guideline procedure.

RDMO with cement vendors

Shut-in blind rams and change out 3-1/2" pipe rams to 2-1/16" pipe rams

P/U 2-3/4" bit on 2-1/16" workstring and TIH to TOC. Drill out cement and float equipment. Continue cleaning out to CBP at 4,350'.

Drill up CBP and continue cleaning out to PBTD at 4,658'. Circulate well clean. TOOH

L/D workstring. P/U 3-1/2" nickel coated AS-1X injection packer with on-off, 1.25" type F profile nipple, and pump out plug on 2-1/16" 3.25#/ft. L-80 TSHP TK-99 production tubing and RIH to +/- 4,320' and set.

Unlatch from on-off and circulate packer fluid.

Conduct pre-MIT on 2-1/16" x 3-1/2" annular space to 500 psi. If MIT fails consult with workover engineer. If MIT passes continue on with procedure

Engage on-off tool

Land tubing in wellhead hanger.

Conduct regulatory witnessed MIT.

N/D BOP. N/U Tree and test void to 500 psi.

RDMO workover rig and equipment

# VGSAU #19W Wellbore Diagram

Created:	01/05/06	By:	C. A. Irie
Updated:	07/24/08	By:	JSS
Lease:	Vacuum Grayburg San Andres Unit		
Field:	same		
Surf. Loc.:	210' FSL & 1,420' FWL		
Bot. Loc.:			
County:	Lea	St.:	NM
Status:	Active Injection Well		

Well #:	19W	St. Lse:	B-1306-1
API	30-025-24331		
Unit Ltr.:	N	Section:	1
TSHP/Rng:	S-18 E-34		
Unit Ltr.:			
TSHP/Rng:			
Directions:	Buckeye, NM		
Chevno:	FH0783		

## Surface Casing

Size:	8 5/8"
Wt., Grd.:	20#
Depth:	354'
Sxs Cmt:	300
Circulate:	Yes
TOC:	Surface
Hole Size:	12 1/4"

## Production Casing

Size:	4 1/2"
Wt., Grd.:	9.5#, J-55
Depth:	4700'
Sxs Cmt:	650
Circulate:	No
TOC:	3520' Est.
Hole Size:	7 7/8"

## Tieback Liner

Size:	3 1/2"
Wt., Grd.:	9.2#, L-80
Depth:	4350'
Sxs Cmt:	
Circulate:	
TOC:	
Hole Size:	

## Perforations:

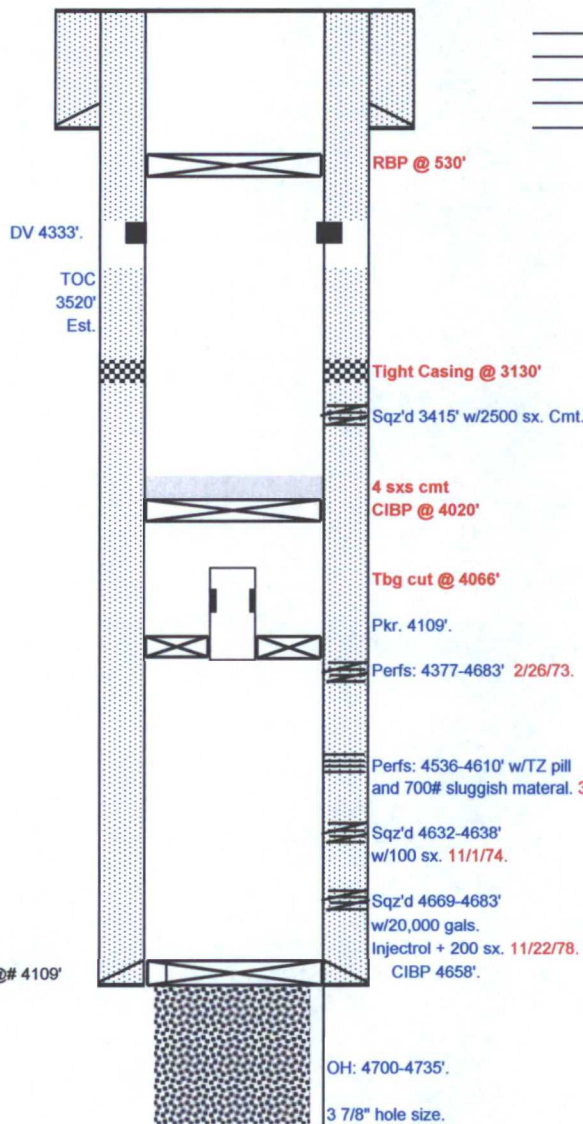
Perfs: 4536-4610' w/TZ pill and 700# sluggish material. 3/30/76.  
 Sqz'd 4377-4683' 2/26/73.  
 Sqz'd 4632-4638' w/100 sx. 11/1/74.  
 Sqz'd 4669-4683' w/20,000 gals  
 Injectrol + 200 sx. 11/22/78.

## Tubing and Packer Detail:

126 jts. 2 3/8" IPC-new Injection tbg @ # 4109'  
 1-4 1/2" ELDER inj pkr. @ 4109'.

## Original OH:

4700-4735'.



KB:	4000'
DF:	3999'
GL:	3988'
Ini. Spud:	02/06/73
Ini. Comp.:	02/21/73

## Perf. and Stimulation History: VGSAU #19W

2/21/73 Initial completion: OH 4700-4735' and Perfs. From 4377, 91, 96, 4405, 16, 31, 37, 69, 76, 85, 4501, 07, 37, 49, 53, 86, 90, 4601, 10, 32, 38, 69, 83'. Acidize perfs. 4377-4683' and OH 4700-4735' w/6000 gals 20% NEA IN 3-2000 gal stages w/total of 225# RS & 100# benzoic acid flakes between stages. flush each stage w/1000 gals treated water. Max.=2700#, Min.=1700#, Air= 8.2 bpm, ISIP=Vac. Convert to injector: injecting 500 BWPD on Vac.  
 11/1/74 Sqz'd perfs. 4632-4638' w/100 sx. cmt. Max.press.=400, Min. press.=100, Air=2 bpm. Injecting 1225 BWPD @ 800#. San Andres perfs. 4377-4610'.  
 3/30/76 Treat perfs 4536-4610' w/TZ pill and 700# sluggish material.  
 11/22/78 Sqz'd 6996-4683' w/20,000 gals injectrol + 200 sx. cmt.  
 5/19/83 Acidize well w/250 gals 15% FE acid, 1000 gals xylene, 2000 gals 6% KCl water, 200 bbls K-trol-4 & 50 bbls K-trol-5.  
 9/12/90 Tbg. failure. Ran ELDER Permanent pkr and set @ 4109'. Ran 126 jts. new IPC 2 3/8" RAM-112.

PBTD: 4658'  
 TD: 4735'