

DISTRICT I
1625 N. French Dr., Hobbs, NM 88240
Phone: (575) 393-6161 Fax: (575) 393-0720

DISTRICT II
811 S. First St., Artesia, NM 88210
Phone: (575) 748-1283 Fax: (575) 748-9720

DISTRICT III
1600 Rio Brazos Road, Aztec, NM 87410
Phone: (505) 334-6178 Fax: (505) 334-6170

DISTRICT IV
1220 S. St. Francis Dr., Santa Fe, NM 87505
Phone: (505) 476-3460 Fax: (505) 476-3462

State of New Mexico
Energy, Minerals & Natural Resources Department
OIL CONSERVATION DIVISION
1220 South St. Francis Dr.
Santa Fe, New Mexico 87505

HOBBS OCD
AUG 03 2016
RECEIVED

Form C-102
Revised August 1, 2011
Submit one copy to appropriate
District Office

AMENDED REPORT

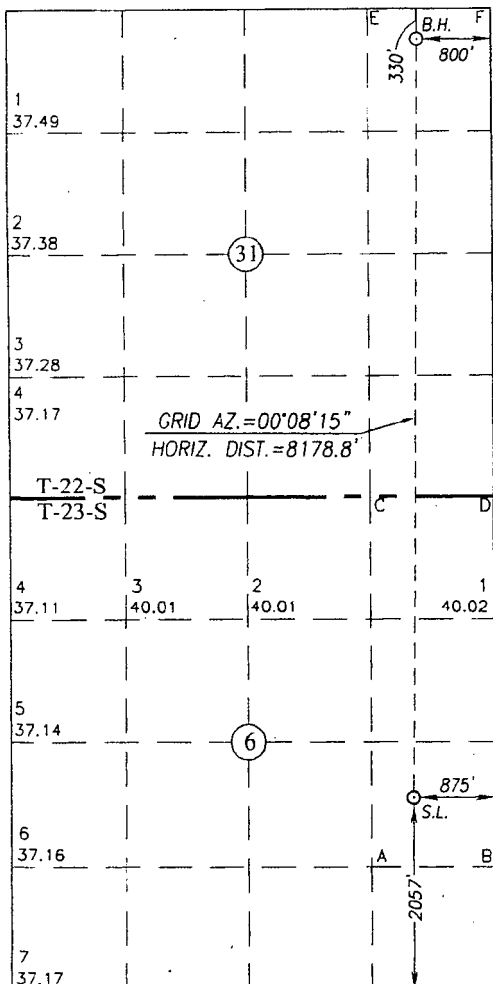
WELL LOCATION AND ACREAGE DEDICATION PLAT

API Number 30-024-43033	Pool Code 5150	Pool Name BELL LAKE; BS, NORTH
Property Code 316707	Property Name BELL LAKE UNIT NORTH	Well Number 262H
OGRID No. 12361	Operator Name KAISER-FRANCIS OIL COMPANY	Elevation 3458'

Surface Location									
UL or lot No.	Section	Township	Range	Lot Idn	Feet from the	North/South line	Feet from the	East/West line	County
I	6	23-S	34-E		2057	SOUTH	875	EAST	LEA

Bottom Hole Location If Different From Surface									
UL or lot No.	Section	Township	Range	Lot Idn	Feet from the	North/South line	Feet from the	East/West line	County
A	31	22-S	34-E		330	NORTH	800	EAST	LEA
Dedicated Acres		Joint or Infill	Consolidation Code	Order No.					

NO ALLOWABLE WILL BE ASSIGNED TO THIS COMPLETION UNTIL ALL INTERESTS HAVE BEEN CONSOLIDATED OR A NON-STANDARD UNIT HAS BEEN APPROVED BY THE DIVISION



SCALE: 1"=2000'

BOTTOM HOLE LOCATION
NAD 83 NME
Y= 493697.1 N
X= 797654.5 E
LAT.=32.354512° N
LONG.=103.503275° W

BOTTOM HOLE LOCATION
NAD 27 NME
Y= 493637.0 N
X= 756471.5 E
LAT.=32.354389° N
LONG.=103.502794° W

CORNER COORDINATES TABLE
NAD 27 NME

A - Y= 484719.1 N, X= 756012.2 E
B - Y= 484728.3 N, X= 757332.2 E
C - Y= 488681.9 N, X= 755982.3 E
D - Y= 488692.5 N, X= 757302.5 E
E - Y= 493962.7 N, X= 755950.1 E
F - Y= 493973.3 N, X= 757269.2 E

CORNER COORDINATES TABLE
NAD 83 NME

A - Y= 484779.0 N, X= 797195.4 E
B - Y= 484788.2 N, X= 798515.4 E
C - Y= 488741.9 N, X= 797165.5 E
D - Y= 488752.5 N, X= 798485.7 E
E - Y= 494022.9 N, X= 797133.1 E
F - Y= 494033.4 N, X= 798452.2 E

GEODETIC COORDINATES
SURFACE LOCATION
NAD 83 NME
Y= 485519.8 N
X= 797634.9 E
LAT.=32.332037° N
LONG.=103.503544° W

GEODETIC COORDINATES
SURFACE LOCATION
NAD 27 NME
Y= 485459.9 N
X= 756451.7 E
LAT.=32.331913° N
LONG.=103.503063° W

OPERATOR CERTIFICATION

I hereby certify that the information herein is true and complete to the best of my knowledge and belief, and that this organization either owns a working interest or unleased mineral interest in the land including the proposed bottom hole location or has a right to drill this well at this location pursuant to a contract with an owner of such mineral or working interest, or to a voluntary pooling agreement or a compulsory pooling order heretofore entered by the division.

Signature
STEVEN A. DOWDY
Date
5/30/16

Printed Name
STEVEN A. DOWDY

E-mail Address
TRIMMIRESTOSBC GLOBAL .NET

SURVEYOR CERTIFICATION

I hereby certify that the well location shown on this plat was plotted from field notes of actual surveys made by me or under my supervision, and that the same is true and correct to the best of my belief.

MARCH 11, 2016

Date of Survey
Signature & Seal of Professional Surveyor

Signature
Ronald J. Eidson
Date
4/28/2016

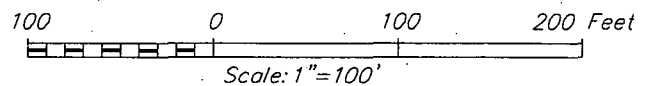
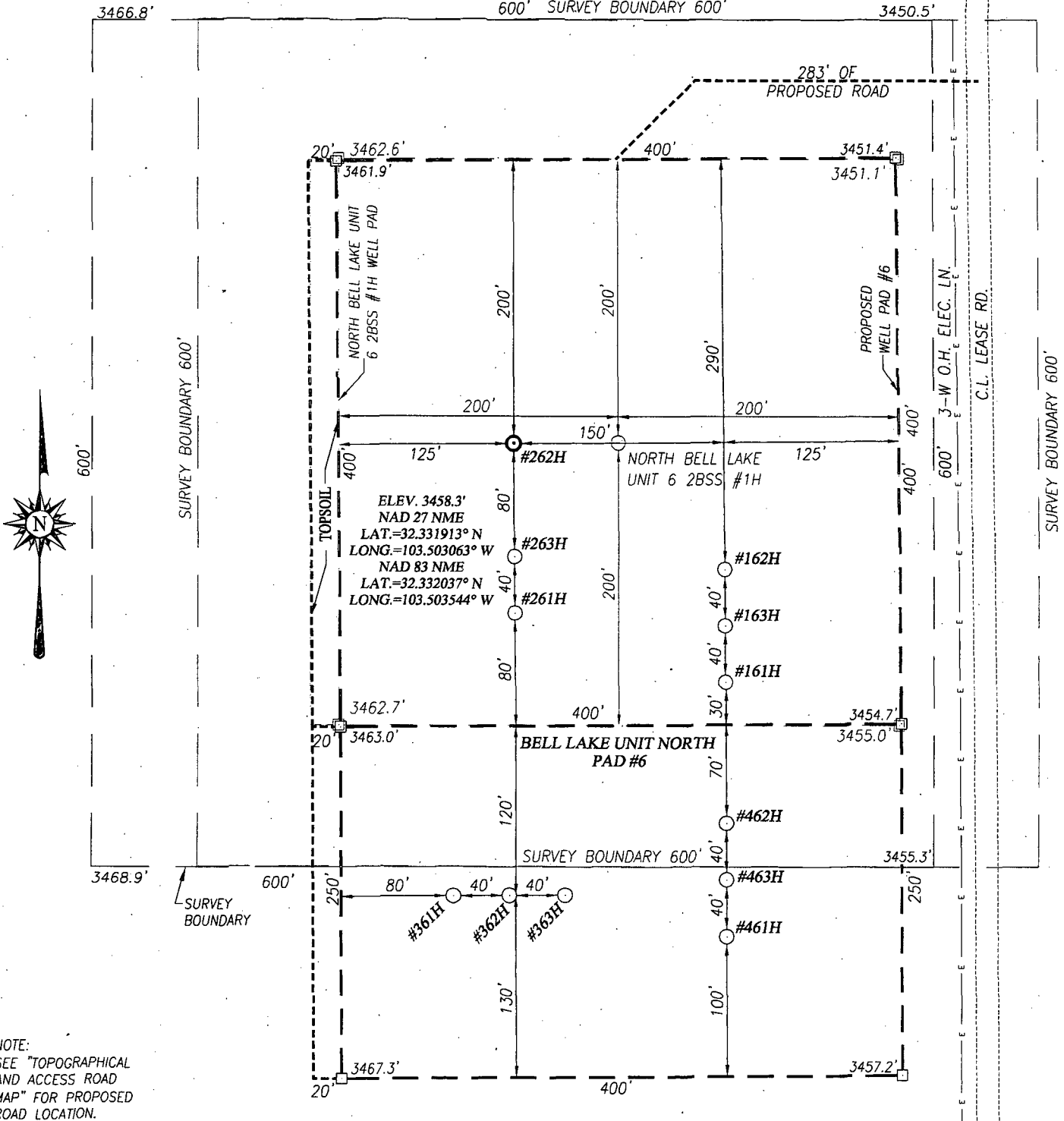
Certificate Number
12641
Surveyor Name
Ronald J. Eidson
Surveyor Number
3239

ACK
JWSC W.O.: 16.11.0153

AMENDED

WELL SITE PLAN

600' SURVEY BOUNDARY 600'



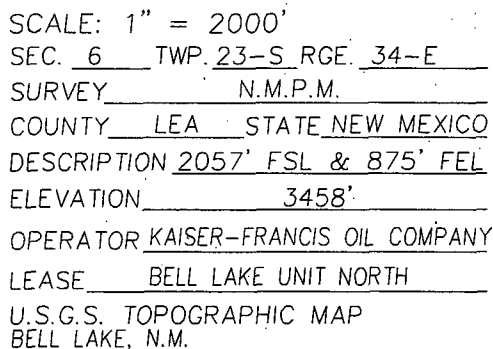
KAISER-FRANCIS OIL COMPANY

**BELL LAKE UNIT NORTH #262H WELL LOCATED
2057 FEET FROM THE SOUTH LINE AND 875 FEET FROM THE
EAST LINE OF SECTION 6, TOWNSHIP 23 SOUTH,
RANGE 34 EAST, N.M.P.M., LEA COUNTY, NEW MEXICO**

Survey Date: 3/11/16	CAD Date: 4/15/16	Drawn By: ACK
W.O. No.: 16110153	Rev:	Rel. W.O.:
		Sheet 1 of 1



PROVIDING SURVEYING SERVICES
SINCE 1946
JOHN WEST SURVEYING COMPANY
412 N. DAL PASO HOBBS, N.M. 88240
(575) 393-3117 www.jwsc.biz
TBPLS# 10021000

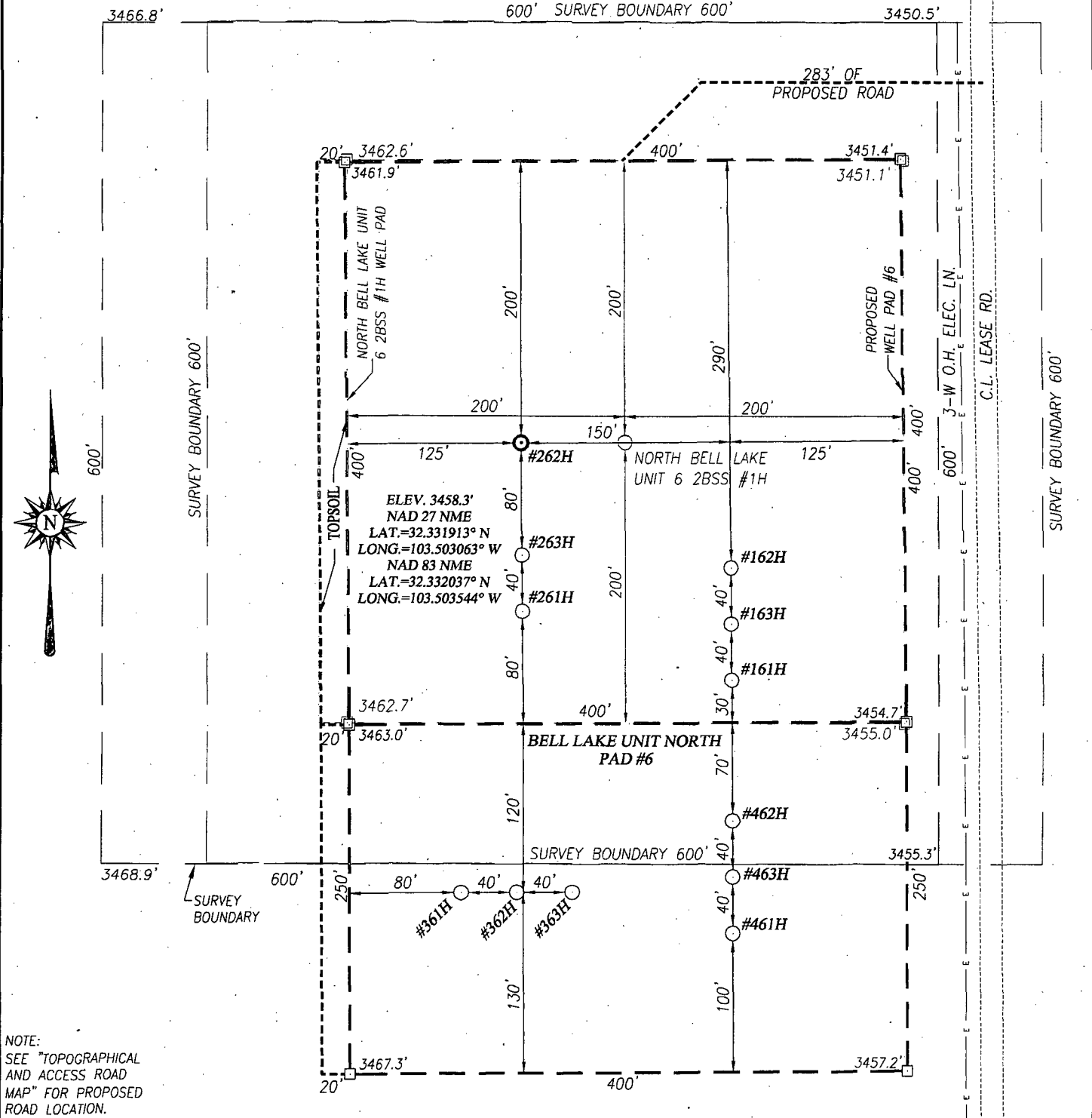


CONTOUR INTERVAL:
BELL LAKE, N.M. - 10'
WOODLEY FLAT, N.M. - 10'



PROVIDING SURVEYING SERVICES
SINCE 1946
JOHN WEST SURVEYING COMPANY
412 N. DAL PASO HOBBS, N.M. 88240
(575) 393-3117 www.jwsc.biz
TBPLS# 10021000

WELL SITE PLAN



NOTE:
SEE "TOPOGRAPHICAL
AND ACCESS ROAD
MAP" FOR PROPOSED
ROAD LOCATION.

DIRECTIONS TO BELL LAKE UNIT NORTH #262H:

FROM THE INTERSECTION OF ST. HWY. 128 AND CO. RD. E21 (DELAWARE BASIN RD.), GO NORTH ON CO. RD. E21 APPROX. 8 MILES, FOLLOW CURVED ROAD RIGHT THEN GO EAST APPROX. 0.4 MILES TO LEASE ROAD. TURN LEFT AND GO NORTH ON LEASE ROAD FOR APPROX. 0.4 MILES TO PROPOSED ACCESS ROAD. FOLLOW ACCESS ROAD LEFT AND GO WEST APPROX. 202 FEET; THEN TURN LEFT AND GO SOUTHWEST APPROX. 80 FEET TO EDGE OF PAD. THIS WELL IS SOUTH-SOUTHWEST APPROX. 213 FEET.



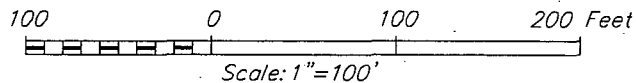
**PROVIDING SURVEYING SERVICES
SINCE 1946**

JOHN WEST SURVEYING COMPANY

412 N. DAL PASO HOBBS, N.M. 88240

(575) 393-3117 www.jwsc.biz

TBPLS# 10021000



KAISER-FRANCIS OIL COMPANY

**BELL LAKE UNIT NORTH #262H WELL LOCATED
2057 FEET FROM THE SOUTH LINE AND 875 FEET FROM THE
EAST LINE OF SECTION 6, TOWNSHIP 23 SOUTH,
RANGE 34 EAST, N.M.P.M., LEA COUNTY, NEW MEXICO**

Survey Date: 3/11/16

CAD Date: 4/15/16

Drawn By: ACK

W.O. No.: 16110153

Rev:

Rel. W.O.:

Sheet 1 of 1