

DISTRICT I
1625 N. French Dr., Hobbs, NM 88240
Phone: (505) 393-6161 Fax: (505) 393-0720

DISTRICT II
811 S. First St., Artesia, NM 88210
Phone: (505) 748-1283 Fax: (505) 748-9720

DISTRICT III
1000 Rio Brazos Road, Aztec, NM 87410
Phone: (505) 334-6178 Fax: (505) 334-6170

DISTRICT IV
1220 S. St. Francis Dr., Santa Fe, NM 87505
Phone: (505) 476-3460 Fax: (505) 476-3462

State of New Mexico
Energy, Minerals & Natural Resources Department
OIL CONSERVATION DIVISION
1220 South St. Francis Dr.
Santa Fe, New Mexico 87505

Revised August 1, 2011

Submit one copy to appropriate District Office

RECEIVED

AMENDED REPORT

WELL LOCATION AND ACREAGE DEDICATION PLAT

API Number 30-025-43034	Pool Code 2209	Pool Name ANTELOPE, BS, WEST
Property Code	Property Name BELL LAKE UNIT SOUTH	Well Number 263H
OGRID No. 12361	Operator Name KAISER-FRANCIS OIL COMPANY	Elevation 3602'

Surface Location

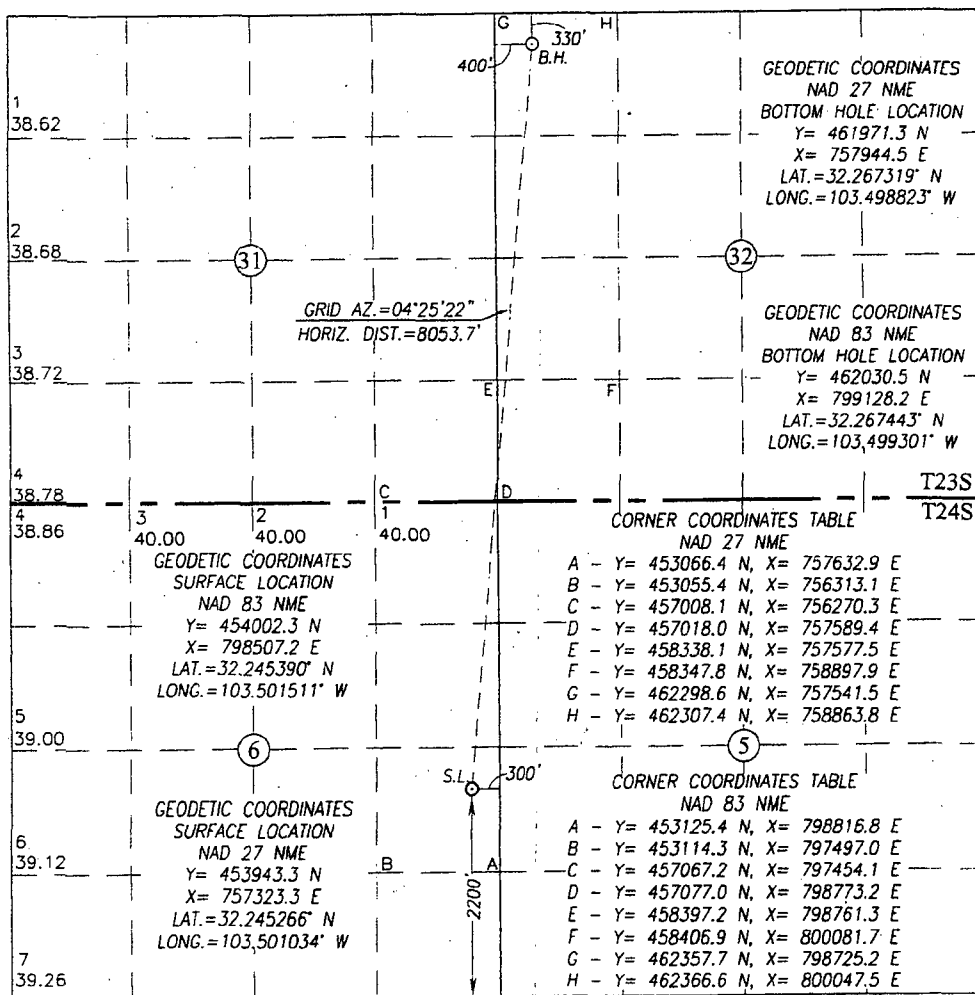
UL or lot No.	Section	Township	Range	Lot Idn	Feet from the	North/South line	Feet from the	East/West line	County
I	6	24-S	34-E		2200	SOUTH	300	EAST	LEA

Bottom Hole Location If Different From Surface

UL or lot No.	Section	Township	Range	Lot Idn	Feet from the	North/South line	Feet from the	East/West line	County
D	32	23-S	34-E		330	NORTH	400	WEST	LEA

Dedicated Acres	Joint or Infill	Consolidation Code	Order No.

NO ALLOWABLE WILL BE ASSIGNED TO THIS COMPLETION UNTIL ALL INTERESTS HAVE BEEN CONSOLIDATED OR A NON-STANDARD UNIT HAS BEEN APPROVED BY THE DIVISION



SCALE: 1"=2000'

OPERATOR CERTIFICATION

I hereby certify that the information herein is true and complete to the best of my knowledge and belief, and that this organization either owns a working interest or unleased mineral interest in the land including the proposed bottom hole location or has a right to drill this well at this location pursuant to a contract with an owner of such mineral or working interest, or to a voluntary pooling agreement or a compulsory pooling order heretofore entered by the division.

[Signature] 5/30/16
Signature Date

STEVEN A. BOWDR
Printed Name

TRIMANRES@BCGLOBAL.NET
E-mail Address

SURVEYOR CERTIFICATION

I hereby certify that the well location shown on this plat was plotted from field notes of actual surveys made by me or under my supervision, and that the same is true

FEBRUARY 29, 2016

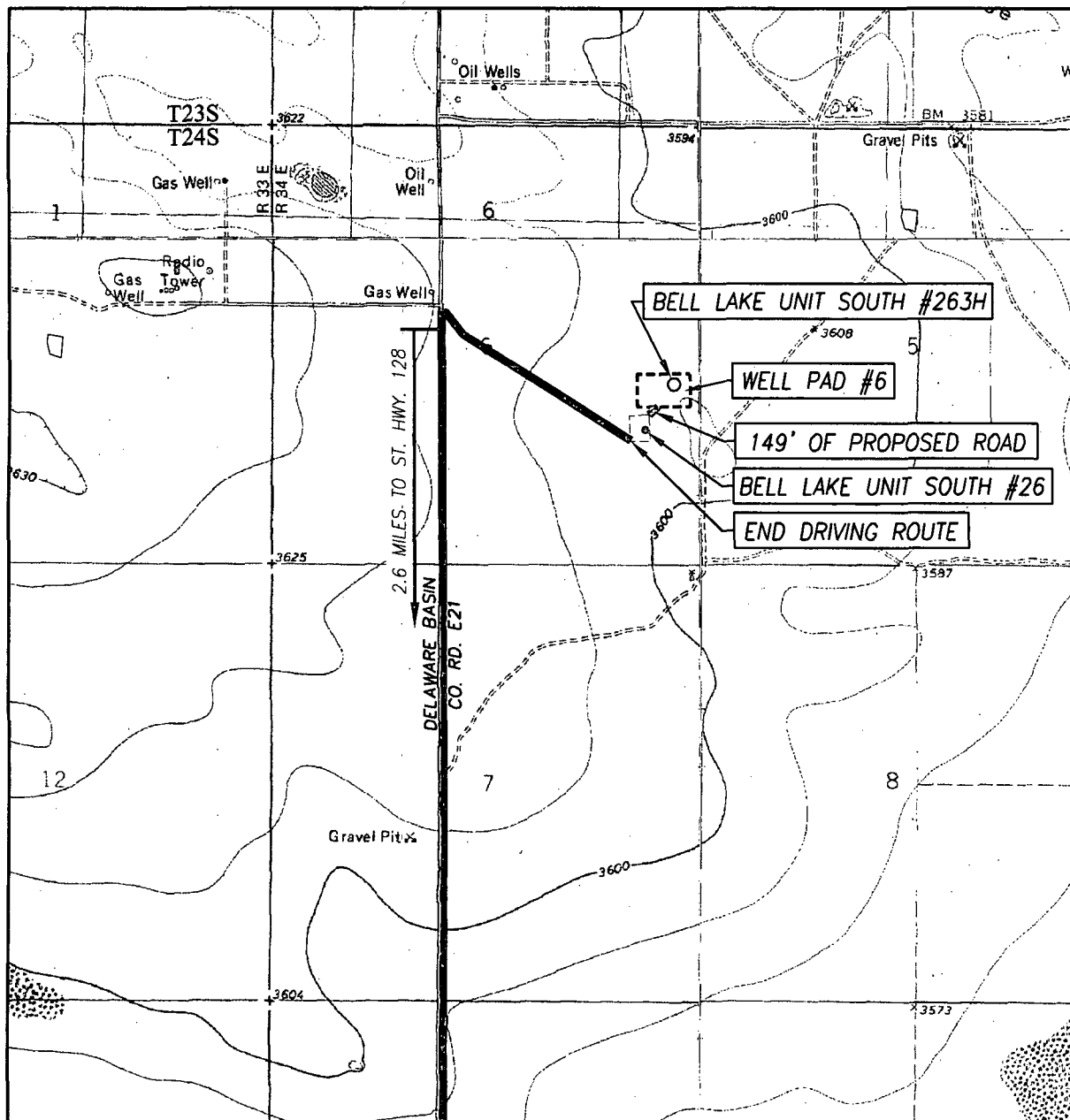
Date of Survey
Signature & Seal of Professional Surveyor:

[Signature]
REGISTERED SURVEYOR
NEW MEXICO
3239
Certificate Number
Gary G. Eidson 12641
Ronald J. Eidson 3239

ACK REV: 4/21/16 JWSC W.O.: 16.11.0165

AMENDED

TOPOGRAPHIC AND ACCESS ROAD MAP



SCALE: 1" = 2000'

CONTOUR INTERVAL:
 BELL LAKE, N.M. - 10'
 WOODLEY FLAT, N.M. - 10'

SEC. 6 TWP. 24-S RGE. 34-E

SURVEY _____ N.M.P.M.

COUNTY LEA STATE NEW MEXICO

DESCRIPTION 2200' FSL & 300' FEL

ELEVATION 3602'

OPERATOR KAISER-FRANCIS OIL COMPANY

LEASE BELL LAKE UNIT SOUTH

U.S.G.S. TOPOGRAPHIC MAP

BELL LAKE, N.M.

DIRECTIONS TO BELL LAKE UNIT SOUTH #263H:

FROM THE INTERSECTION OF ST. HWY. 128 AND CO. RD. E21 (DELAWARE BASIN RD.), GO NORTH ON CO. RD. E21 APPROX. 2.6 MILES TO CO. RD. J1 (BELL LAKE RD.). TURN RIGHT ON LEASE ROAD AND GO EAST-SOUTHEAST APPROX. 0.55 MILES TO THE KAISER-FRANCIS BELL LAKE UNIT SOUTH #26 WELL PAD. FOLLOW PROPOSED ACCESS ROAD NORTHEAST FROM THE NORTHEAST CORNER OF THIS EXISTING WELL APPROX. 149 FEET TO THE SOUTH SIDE OF THIS LOCATION. THIS WELL IS NORTHEAST APPROX. 340 FEET.



PROVIDING SURVEYING SERVICES
 SINCE 1946

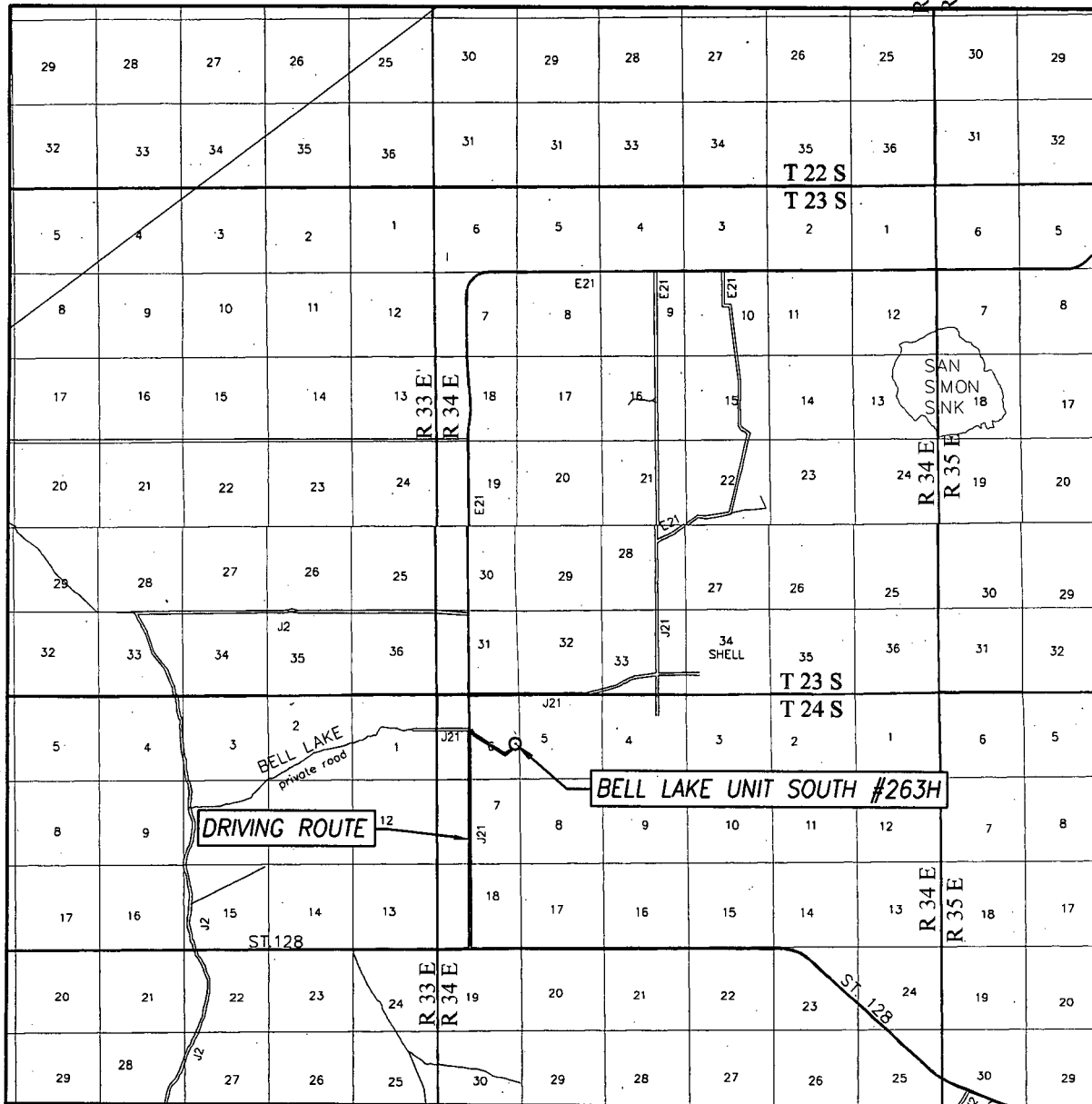
JOHN WEST SURVEYING COMPANY

412 N. DAL PASO HOBBS, N.M. 88240

(575) 393-3117 www.jwsc.biz

TBPLS# 10021000

VICINITY MAP



SCALE: 1" = 2 MILES

DRIVING ROUTE: SEE TOPOGRAPHICAL AND ACCESS ROAD MAP

SEC. 6 TWP. 24-S RGE. 34-E

SURVEY N.M.P.M.

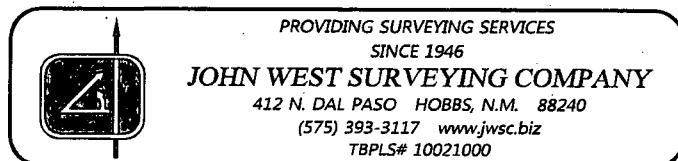
COUNTY LEA STATE NEW MEXICO

DESCRIPTION 2200' FSL & 300' FEL

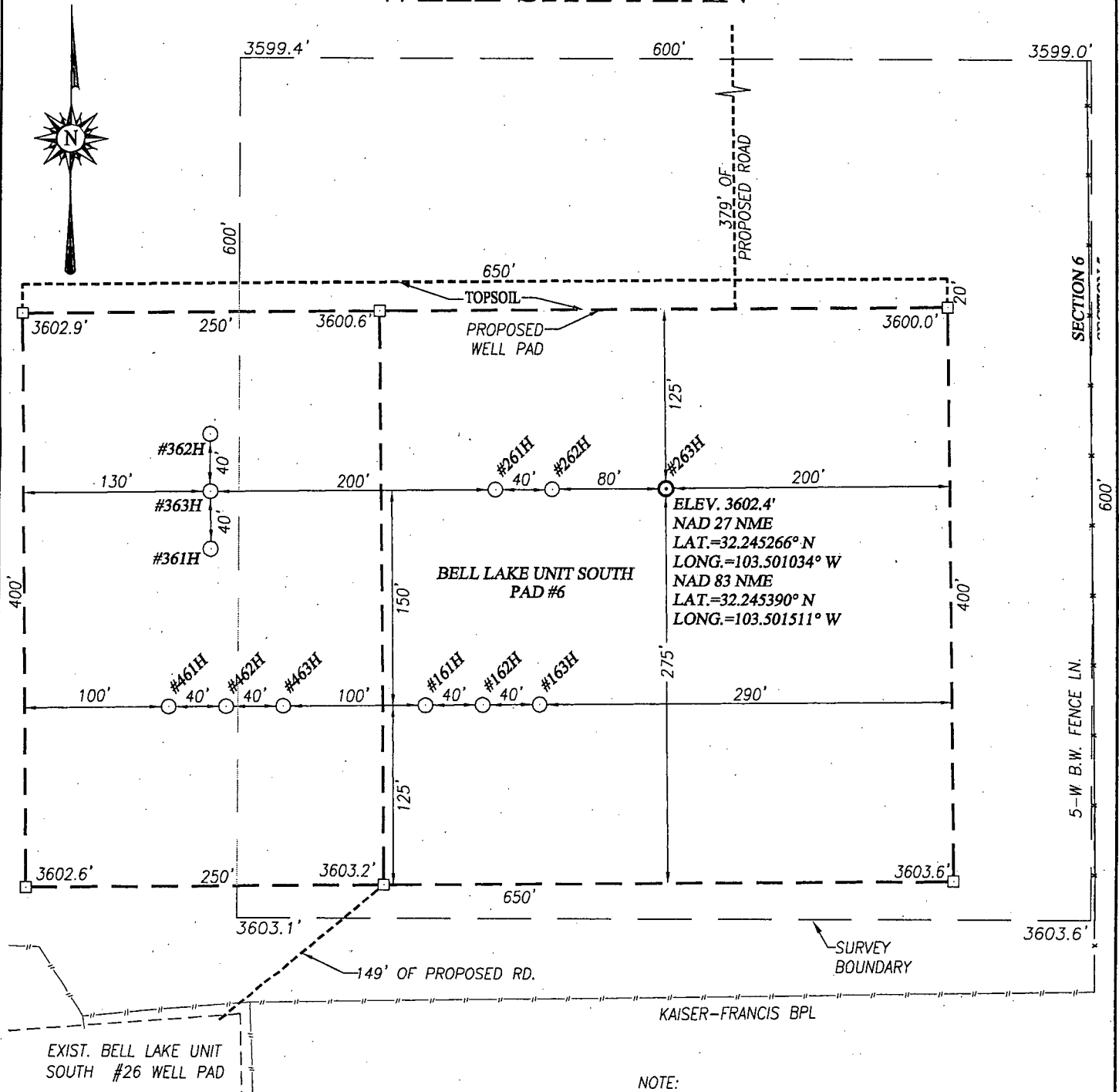
ELEVATION 3602'

OPERATOR KAISER-FRANCIS OIL COMPANY

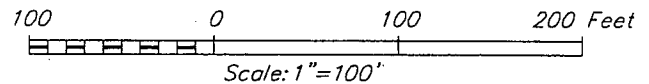
LEASE BELL LAKE UNIT SOUTH



WELL SITE PLAN



NOTE:
SEE "TOPOGRAPHICAL AND ACCESS ROAD MAP"
FOR PROPOSED ROAD LOCATION.



DIRECTIONS TO BELL LAKE UNIT SOUTH #263H:

FROM THE INTERSECTION OF ST. HWY. 128 AND CO. RD. E21 (DELAWARE BASIN RD.), GO NORTH ON CO. RD. E21 APPROX. 2.6 MILES TO CO. RD. J1 (BELL LAKE RD.). TURN RIGHT ON LEASE ROAD AND GO EAST-SOUTHEAST APPROX. 0.55 MILES TO THE KAISER-FRANCIS BELL LAKE UNIT SOUTH #26 WELL PAD. FOLLOW PROPOSED ACCESS ROAD NORTHEAST FROM THE NORTHEAST CORNER OF THIS EXISTING WELL APPROX. 149 FEET TO THE SOUTH SIDE OF THIS LOCATION. THIS WELL IS NORTHEAST APPROX. 340 FEET.



PROVIDING SURVEYING SERVICES
SINCE 1946
JOHN WEST SURVEYING COMPANY
412 N. DAL PASO HOBBS, N.M. 88240
(575) 393-3117 www.jwsc.biz
TBPLS# 10021000

KAISER-FRANCIS OIL COMPANY

**BELL LAKE UNIT SOUTH #263H WELL LOCATED
2200 FEET FROM THE SOUTH LINE AND 300 FEET FROM THE
EAST LINE OF SECTION 6, TOWNSHIP 24 SOUTH,
RANGE 34 EAST, N.M.P.M., LEA COUNTY, NEW MEXICO**

Survey Date: 2/29/16	CAD Date: 3/25/16	Drawn By: ACK
W.O. No.: 16110165	Rev: 4/21/16	Rel. W.O.:
		Sheet 1 of 1