

District I
1625 N. French Dr., Hobbs, NM 88240
Phone: (575) 393-6161 Fax: (575) 393-0720
District II
811 S. First St., Artesia, NM 88210
Phone: (575) 748-1283 Fax: (575) 748-9720
District III
1000 Rio Brazos Road, Aztec, NM 87410
Phone: (505) 334-6178 Fax: (505) 334-6170
District IV
1220 S. St. Francis Dr., Santa Fe, NM 87505
Phone: (505) 476-3460 Fax: (505) 476-3462

State of New Mexico
Energy, Minerals & Natural Resources Department
OIL CONSERVATION DIVISION
1220 South St. Francis Dr.
Santa Fe, NM 87505

Form C-102
Revised August 1, 2011
Submit one copy to appropriate
District Office

☐ AMENDED REPORT

WELL LOCATION AND ACREAGE DEDICATION PLAT

30-025- ¹ API Number 43391	² Pool Code 98081	³ Pool Name Wolfcamp WC-025 G-09 5263225A; WOLF CAMP
⁴ Property Code 315128	⁵ Property Name WAR HAMMER 25 FEDERAL COM	⁶ Well Number 5H
⁷ SECID No. 217817	⁸ Operator Name ConocoPhillips Company	⁹ Elevation 3133'

¹⁰ Surface Location

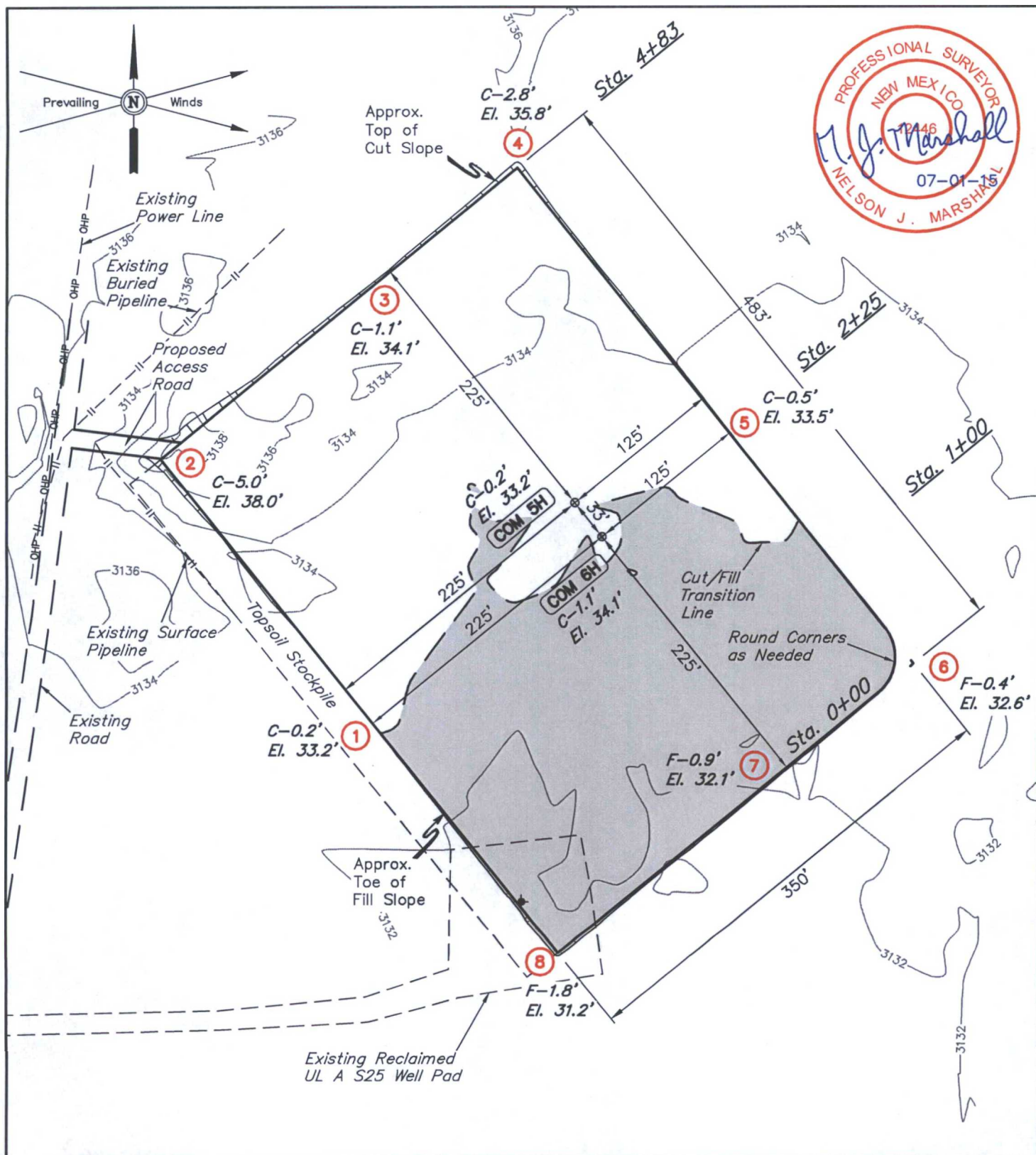
UL or lot no.	Section	Township	Range	Lot Idn	Feet from the	North/South line	Feet from the	East/West line	County
A	25	26 S	32 E		370	NORTH	624	EAST	LEA

¹¹ Bottom Hole Location If Different From Surface

UL or lot no.	Section	Township	Range	Lot Idn	Feet from the	North/South line	Feet from the	East/West line	County
1	36	26 S	32 E		50	SOUTH	710	EAST	LEA
¹² Dedicated Acres 224.99	¹³ Joint or Infill	¹⁴ Consolidation Code	¹⁵ Order No.						

No allowable will be assigned to this completion until all interests have been consolidated or a non-standard unit has been approved by the division.

<p>¹⁶ NAD 83 (SURFACE HOLE LOCATION) LATITUDE = 32°01'11.73" (32.019925) LONGITUDE = 103°37'18.61" (103.621836) NAD 27 (SURFACE HOLE LOCATION) LATITUDE = 32°01'11.28" (32.019800) LONGITUDE = 103°37'16.93" (103.621369) STATE PLANE NAD 83 (N.M. EAST) N: 371713.84 E: 761847.68 STATE PLANE NAD 27 (N.M. EAST) N: 371656.86 E: 720660.10 NAD 83 (FIRST TAKE POINT) LATITUDE = 32°01'12.13" (32.020036) LONGITUDE = 103°37'19.62" (103.622117) NAD 27 (FIRST TAKE POINT) LATITUDE = 32°01'11.68" (32.019911) LONGITUDE = 103°37'17.93" (103.621647) STATE PLANE NAD 83 (N.M. EAST) N: 371753.25 E: 761761.08 STATE PLANE NAD 27 (N.M. EAST) N: 371696.27 E: 720573.51 NAD 83 (LAST TAKE POINT) LATITUDE = 32°00'04.12" (32.0001144) LONGITUDE = 103°37'19.58" (103.622106) NAD 27 (LAST TAKE POINT) LATITUDE = 32°00'03.66" (32.0001017) LONGITUDE = 103°37'17.90" (103.621639) STATE PLANE NAD 83 (N.M. EAST) N: 364880.62 E: 761809.72 STATE PLANE NAD 27 (N.M. EAST) N: 364823.81 E: 720621.84 NAD 83 (BOTTOM HOLE LOCATION) LATITUDE = 32°00'01.35" (32.000375) LONGITUDE = 103°37'19.57" (103.622103) NAD 27 (BOTTOM HOLE LOCATION) LATITUDE = 32°00'00.89" (32.000247) LONGITUDE = 103°37'17.90" (103.621639) STATE PLANE NAD 83 (N.M. EAST) N: 364600.68 E: 761811.71 STATE PLANE NAD 27 (N.M. EAST) N: 364543.87 E: 720623.81</p>	<p>▲ = SECTION CORNERS LOCATED. △ = SECTION CORNERS RE-ESTABLISHED. (Not Set on Ground.)</p> <p>Note: Distances referenced on plat to section lines and lease lines are perpendicular.</p> <p>Detail "A" No Scale FTP SHL See Detail "A" @ Below Left</p> <p>Detail "B" No Scale LTP BHL Section Line See Detail "B" @ Above Left</p> <p>DEDICATED ACRES</p> <p>LOT 1 24.99 AC LOT 2 24.96 AC LOT 3 24.92 AC LOT 4 24.89 AC</p> <p>LINE TABLE</p> <table><thead><tr><th>LINE</th><th>DIRECTION</th><th>LENGTH</th></tr></thead><tbody><tr><td>L1</td><td>N65°12'17"W</td><td>95.16'</td></tr><tr><td>L2</td><td>S00°04'47"E</td><td>280.00'</td></tr></tbody></table>	LINE	DIRECTION	LENGTH	L1	N65°12'17"W	95.16'	L2	S00°04'47"E	280.00'	<p>¹⁷ OPERATOR CERTIFICATION</p> <p>I hereby certify that the information contained herein is true and complete to the best of my knowledge and belief, and that this organization either owns a working interest or unleased mineral interest in the land including the proposed bottom hole location or has a right to drill this well at this location pursuant to a contract with an owner of such a mineral or working interest, or to a voluntary pooling agreement or a compulsory pooling order heretofore entered by the division.</p> <p>AWB 7/24/15 Signature Date</p> <p>Ashley Bergen Printed Name ashley.bergen@cop.com E-mail Address</p> <p>¹⁸ SURVEYOR CERTIFICATION</p> <p>I hereby certify that the well location shown on this plat was plotted from field notes of actual surveys made by me or under my supervision, and that the same is true and correct to the best of my belief.</p> <p>December 19, 2013 Date of Survey Signature and Seal of Professional Surveyor:</p> <p>PROFESSIONAL SURVEYOR NEW MEXICO 12446 Nelson J. Marshall NELSON J. MARSHALL 07-01-15</p> <p>Certificate Number:</p>
LINE	DIRECTION	LENGTH									
L1	N65°12'17"W	95.16'									
L2	S00°04'47"E	280.00'									



ELEV. UNGRADED GROUND AT W2 6H LOC. STAKE = 3134.1' FINISHED GRADE ELEV. AT W2 6H LOC. STAKE = 3133.0'

NOTES:

- Flare pit is to be located a min. of 100' from the well head.
- Underground utilities shown on this sheet are for visualization purposes only, actual locations to be determined prior to construction.

ConocoPhillips

ConocoPhillips Company

WAR HAMMER 25 FEDERAL COM 6H & COM 5H
SECTION 25, T26S, R32E, N.M.P.M.
NE 1/4 NE 1/4

DRAWN BY: S.F.

SCALE: 1" = 100'

REVISED: 06-16-14

DATE: 01-27-14

REVISED: 05-23-14

REVISED: 06-25-15 T.E.

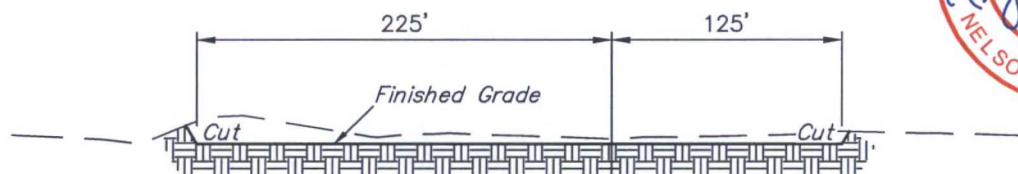
LOCATION LAYOUT

FIGURE #1

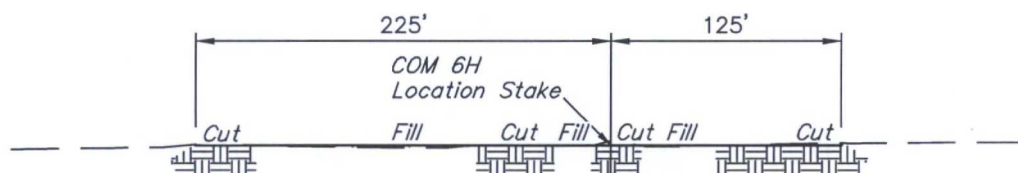


Corporate Office * 85 South 200 East
Vernal, UT 84078 * (435) 789-1017

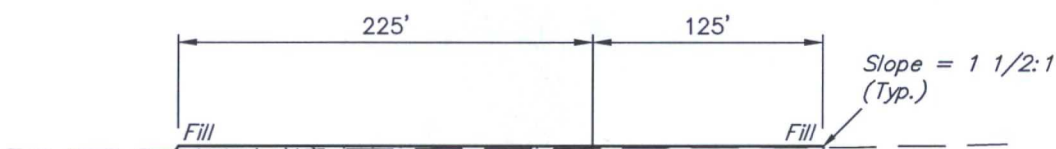
1" = 40'
X-Section
Scale
1" = 100'



STA. 4+83



STA. 2+25



STA. 1+00



STA. 0+00

APPROXIMATE EARTHWORK QUANTITIES		APPROXIMATE SURFACE DISTURBANCE AREAS		
(3") TOPSOIL STRIPPING	1,590 Cu. Yds.		DISTANCE	ACRES
REMAINING LOCATION	2,730 Cu. Yds.	WELL SITE DISTURBANCE	NA	±4.264
TOTAL CUT	4,320 Cu. Yds.	ACCESS ROAD DISTURBANCE	±75.26'	±0.052
FILL	2,730 Cu. Yds.	FLOW LINE DISTURBANCE	±1849.38'	±1.274
EXCESS MATERIAL	1,590 Cu. Yds.	POWER LINE DISTURBANCE	±507.34'	±0.349
TOPSOIL	1,590 Cu. Yds.	TOTAL DISTURBANCE		±5.939
EXCESS UNBALANCE (After Interim Rehabilitation)	0 Cu. Yds.			

NOTES:

- Fill quantity includes 5% for compaction.

ConocoPhillips

ConocoPhillips Company

**WAR HAMMER 25 FEDERAL COM 6H & COM 5H
SECTION 25, T26S, R32E, N.M.P.M.
NE 1/4 NE 1/4**

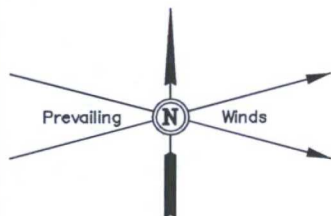


Corporate Office * 85 South 200 East
Vernal, UT 84078 * (435) 789-1017

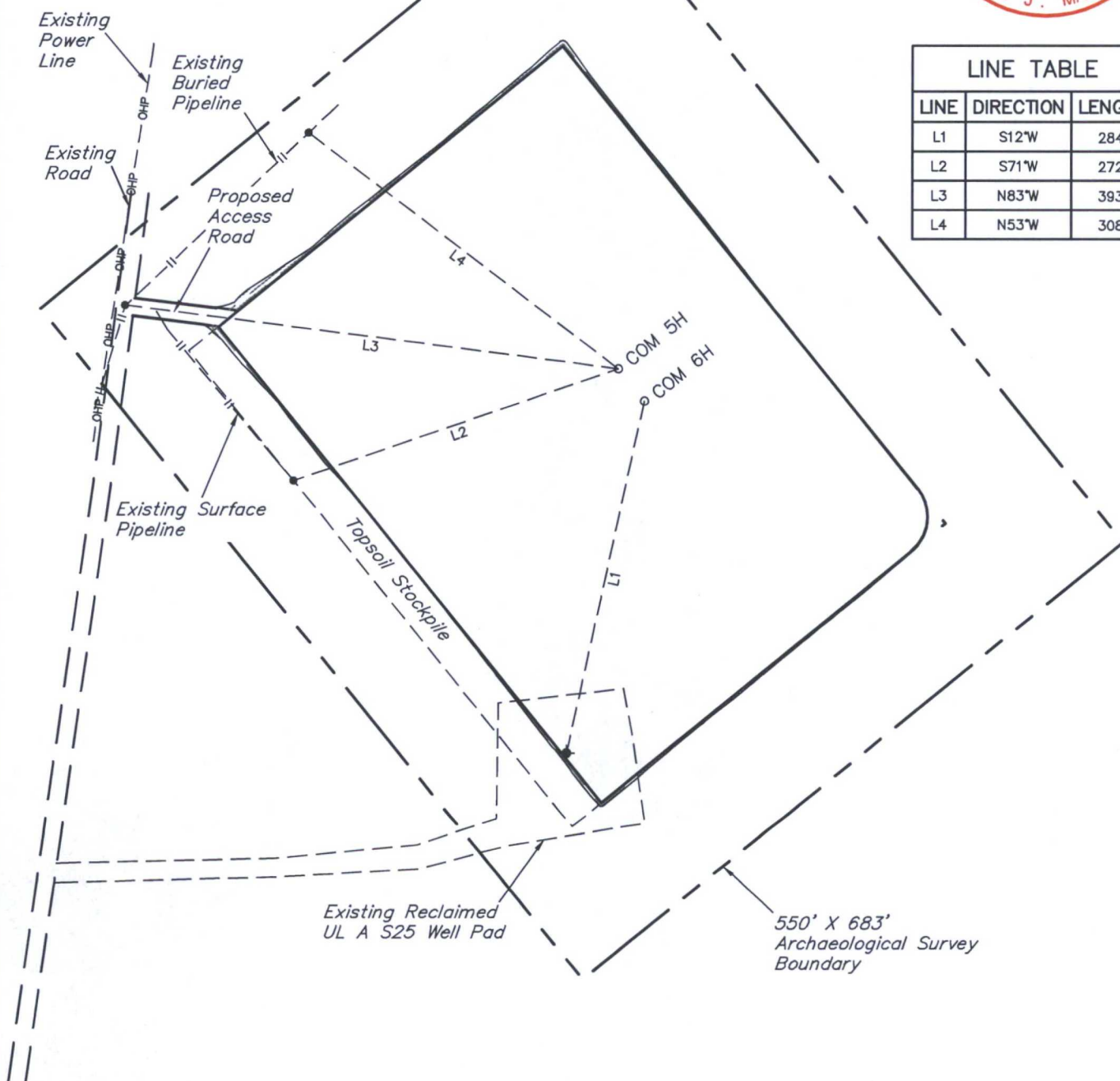
DRAWN BY: S.F. SCALE: AS SHOWN REVISED: 04-20-15 B.A.
DATE: 01-27-14 REVISED: 03-13-15 H.W. REVISED: 06-25-15 T.E.

TYPICAL CROSS SECTIONS

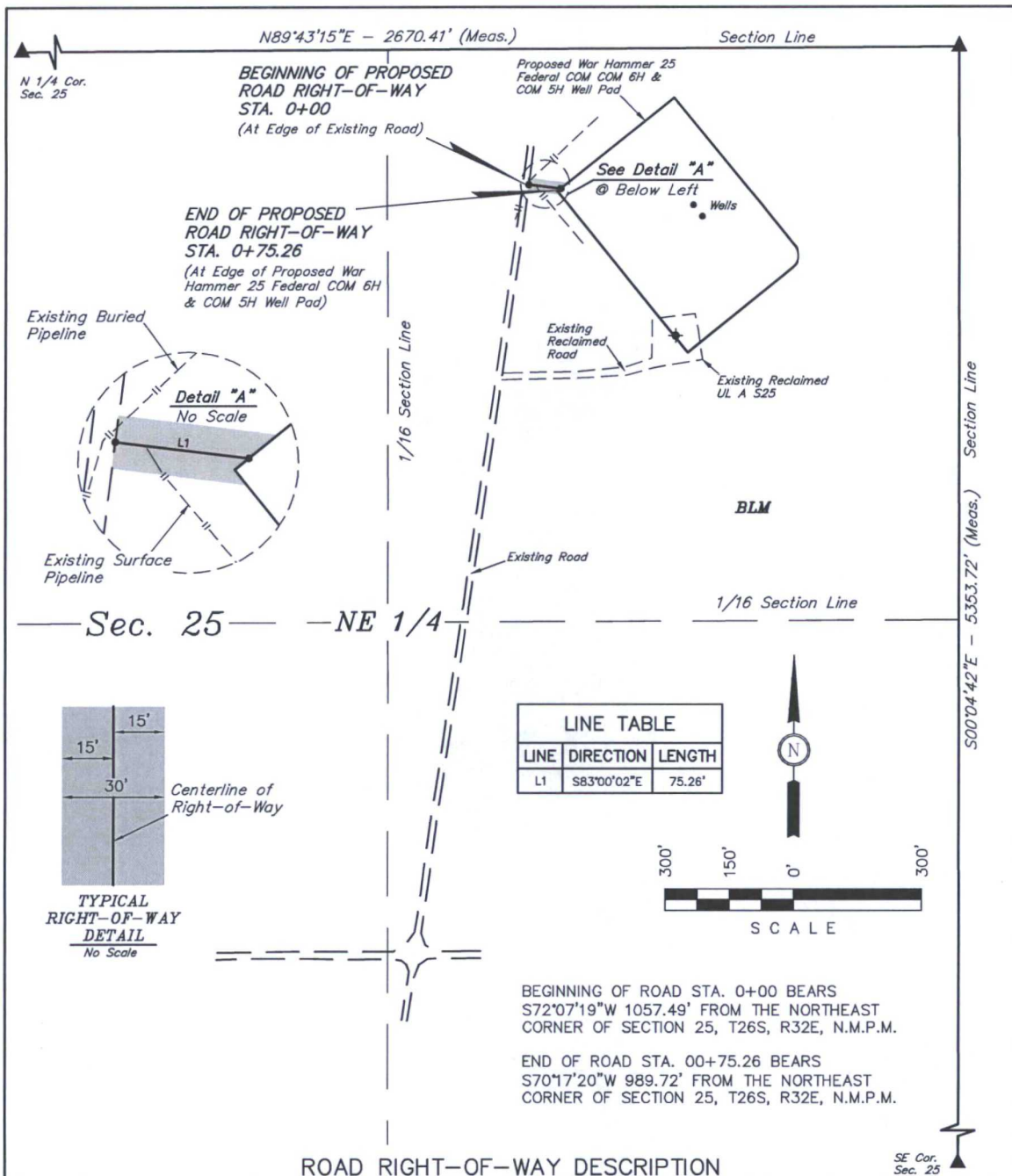
FIGURE #2



LINE TABLE		
LINE	DIRECTION	LENGTH
L1	S12°W	284'
L2	S71°W	272'
L3	N83°W	393'
L4	N53°W	308'



NOTES:		ConocoPhillips	ConocoPhillips Company	
		WAR HAMMER 25 FEDERAL COM 6H & COM 5H SECTION 25, T26S, R32E, N.M.P.M. NE 1/4 NE 1/4		
 Corporate Office * 85 South 200 East Vernal, UT 84078 * (435) 789-1017	DRAWN BY: S.F.	SCALE: 1" = 120'	REVISED: 06-25-15 T.E.	
	DATE: 01-27-14	REVISED: 05-23-14		
	ARCHAEOLOGICAL SURVEY BOUNDARY			FIGURE #5



A 30' WIDE RIGHT-OF-WAY 15' ON EACH SIDE OF THE FOLLOWING DESCRIBED CENTERLINE.

BEGINNING AT A POINT IN THE NE 1/4 NE 1/4 OF SECTION 25, T26S, R32E, N.M.P.M., WHICH BEARS S72°07'19\"W 1057.49' FROM THE NORTHEAST CORNER OF SAID SECTION 25, THENCE S83°00'02\"E 75.26' TO A POINT IN THE NE 1/4 NE 1/4 OF SAID SECTION 25, WHICH BEARS S70°17'20\"W 989.72' FROM THE NORTHEAST CORNER OF SAID SECTION 25. THE SIDE LINES OF SAID DESCRIBED RIGHT-OF-WAY BEING SHORTENED OR ELONGATED TO MEET THE GRANTOR'S PROPERTY LINES. BASIS OF BEARINGS IS A G.P.S. OBSERVATION. CONTAINS 0.052 ACRES MORE OR LESS.

RIGHT-OF-WAY LENGTHS			
DESCRIPTION	FEET	ACRES	RODS
TOTAL	75.26	0.052	4.56

▲ = SECTION CORNERS LOCATED.

NOTES:

- The maximum grade of existing ground for the proposed access road is \pm 4%.

THIS IS TO CERTIFY THAT THE ABOVE PLAT WAS PREPARED FROM FIELD NOTES OF ACTUAL SURVEYS MADE BY ME OR UNDER MY SUPERVISION AND THAT THE SAME ARE TRUE AND CORRECT TO THE BEST OF MY KNOWLEDGE AND BELIEF.

CERTIFICATE OF PROFESSIONAL SURVEY

REGISTERED LAND SURVEYOR
REGISTRATION NO. 12446
STATE OF NEW MEXICO

07-01-15



Corporate Office * 85 South 200 East
Vernal, UT 84078 * (435) 789-1017

ConocoPhillips

ConocoPhillips Company

WAR HAMMER 25 FEDERAL COM 6H & COM 5H
SECTION 25, T26S, R32E, N.M.P.M.
NE 1/4 NE 1/4

DRAWN BY: S.F.

SCALE: 1" = 300'

REVISED: 04-20-15 B.A.

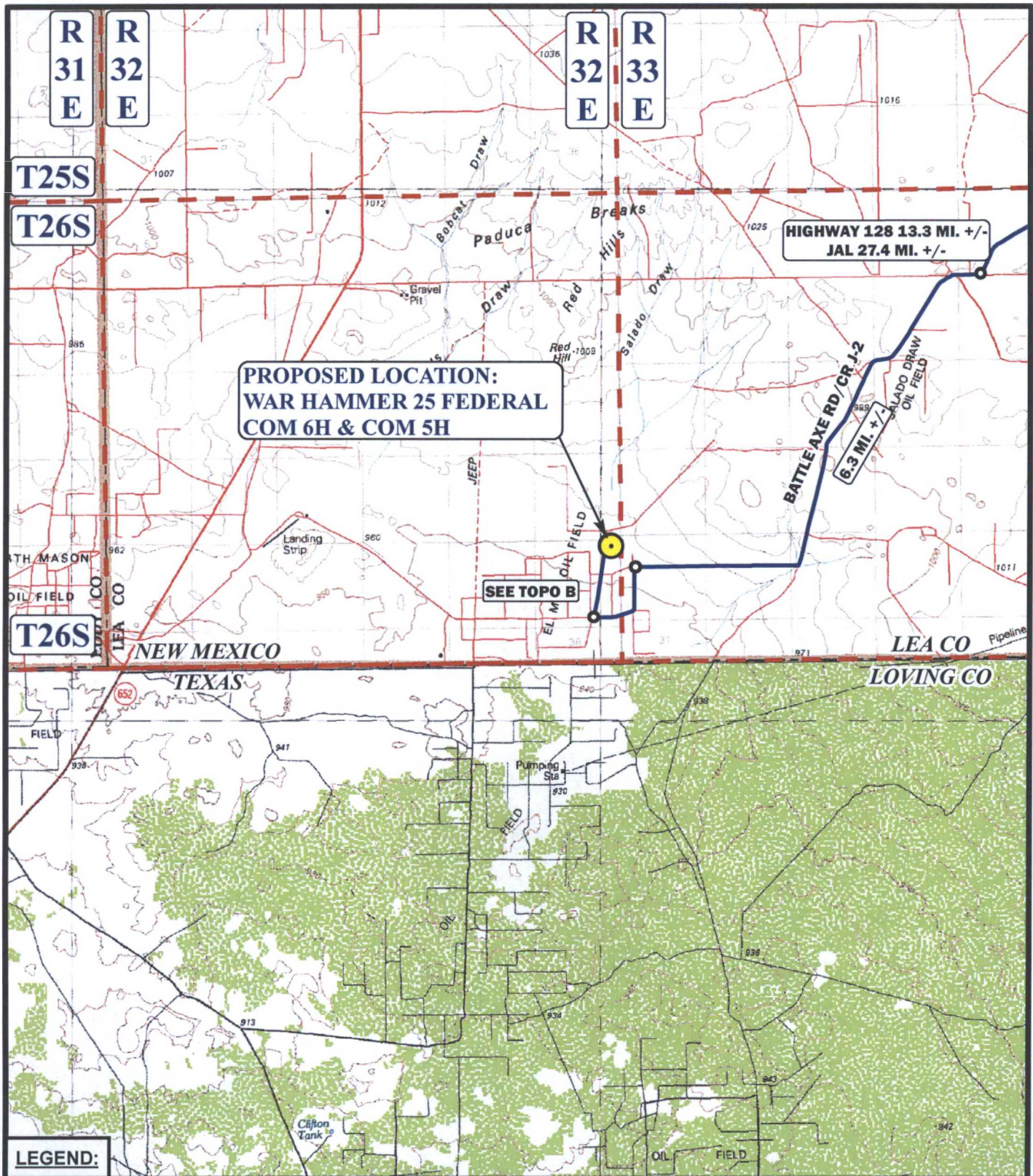
DATE: 01-27-14

REVISED: 03-13-15 H.W.

REVISED: 06-29-15 T.E.

ACCESS ROAD R-O-W

FIGURE #6



SCALE: 1:100,000

DRAWN BY: L.S.

DATE DRAWN: 01-06-14

REV: 05-23-14 M.M.

REV: 06-30-15 T.I.



ConocoPhillips

ConocoPhillips Company

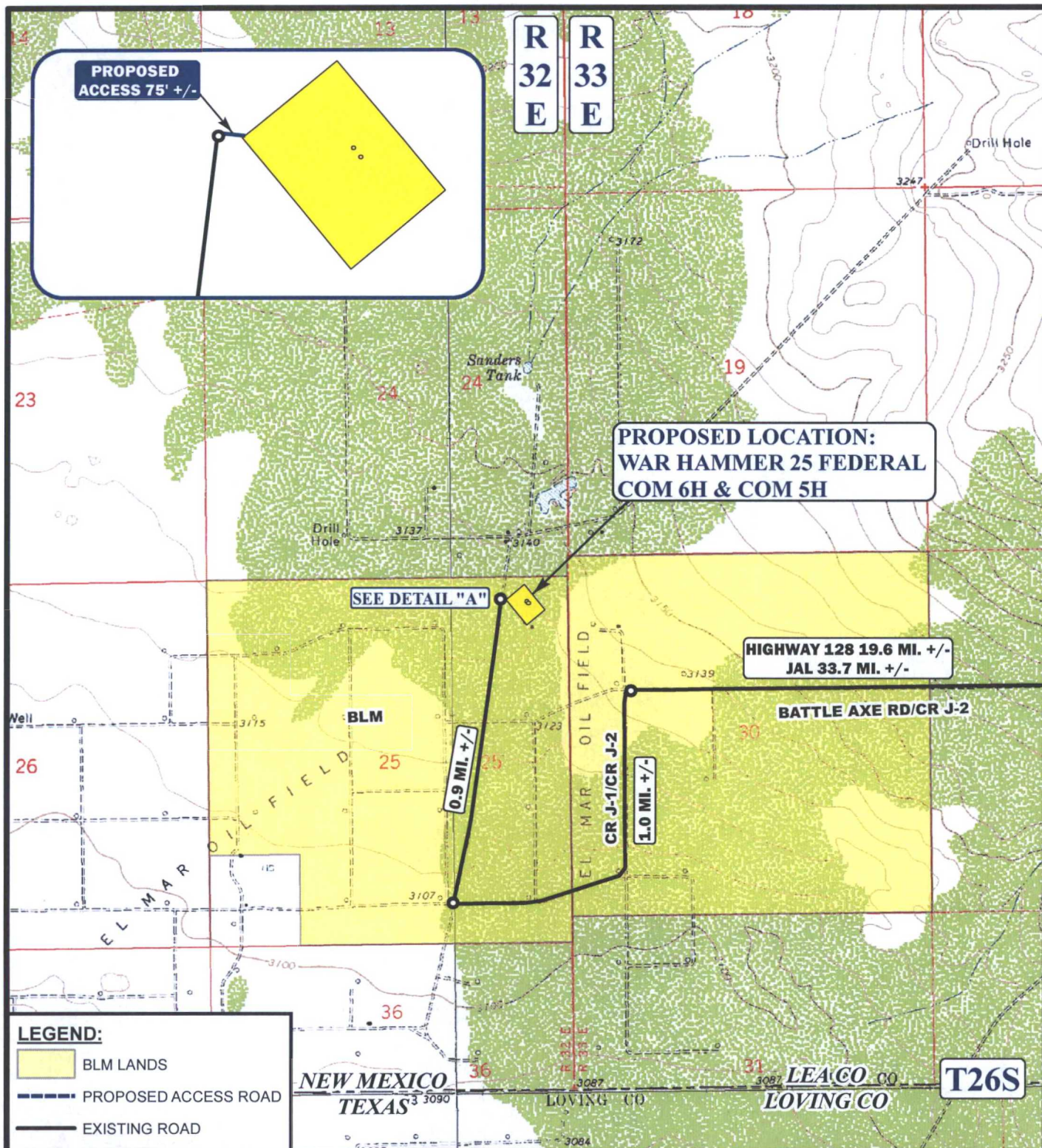
WAR HAMMER 25 FEDERAL COM 6H & COM 5H
SECTION 25, T26S, R32E, N.M.P.M.
NE 1/4 NE 1/4

ACCESS ROAD MAP

TOPO A



Corporate Office * 85 South 200 East
Vernal, UT 84078 * (435) 789-1017



*PARCEL DATA SHOWN HAS BEEN OBTAINED FROM VARIOUS SOURCES AND SHOULD BE USED FOR MAPPING, GRAPHIC AND PLANNING PURPOSES ONLY. NO WARRANTY IS MADE BY UINTAH ENGINEERING & LAND SURVEYING (UELS) FOR ACCURACY OF THE PARCEL DATA.

SCALE: 1" = 2000' REV: 05-23-14 M.M.
 DRAWN BY: L.S. REV: 06-30-15 T.I.
 DATE DRAWN: 01-06-14



ConocoPhillips

ConocoPhillips Company

WAR HAMMER 25 FEDERAL COM 6H & COM 5H
 SECTION 25, T26S, R32E, N.M.P.M.
 NE 1/4 NE 1/4

ACCESS ROAD MAP

TOPO B

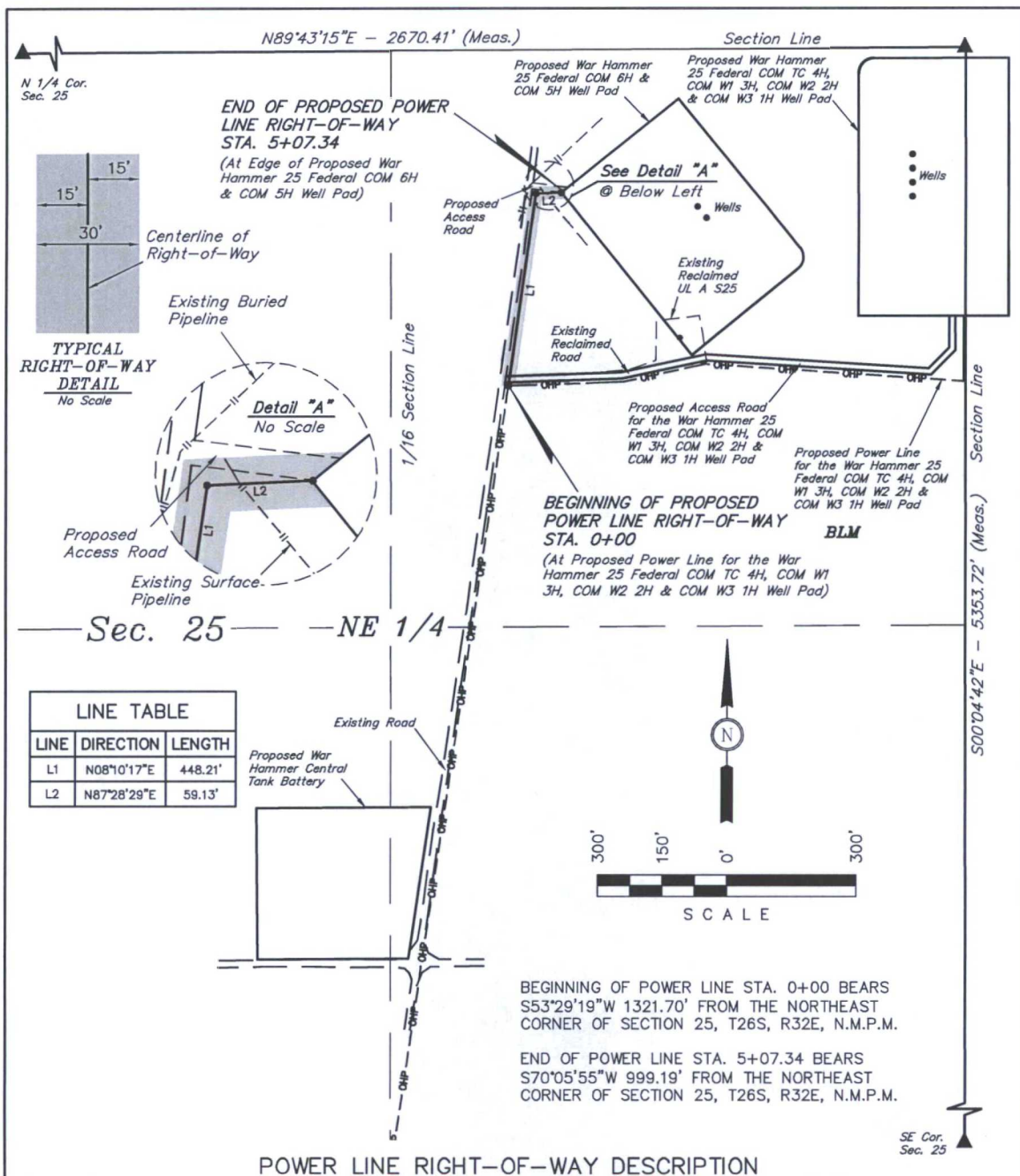


Corporate Office * 85 South 200 East
 Vernal, UT 84078 * (435) 789-1017

ConocoPhillips Company
WAR HAMMER 25 FEDERAL COM 6H & COM 5H
SECTION 25, T26S, R32E, N.M.P.M.

BEGINNING AT THE INTERSECTION OF HIGHWAY 18 AND HIGHWAY 128 PROCEED IN A WESTERLY, THEN NORTHWESTERLY DIRECTION FROM JAL, NEW MEXICO ALONG HIGHWAY 128 APPROXIMATELY 14.1 MILES TO THE JUNCTION OF THIS ROAD AND BATTLE AXE ROAD TO THE SOUTHWEST; TURN LEFT AND PROCEED IN A SOUTHWESTERLY, THEN WESTERLY, THEN SOUTHERLY, THE SOUTHWESTERLY DIRECTION APPROXIMATELY 13.3 MILES TO THE JUNCTION OF THIS ROAD AND BATTLE AXE ROAD/CR J-2 TO THE WEST; TURN RIGHT AND PROCEED IN A WESTERLY, THEN SOUTHWESTERLY, THEN WESTERLY DIRECTION APPROXIMATELY 6.3 MILES TO THE JUNCTION OF THIS ROAD AND CR J-1/CR J-2 TO THE SOUTH; TURN LEFT AND PROCEED IN A SOUTHERLY, THEN WESTERLY DIRECTION APPROXIMATELY 1.0 MILES TO THE JUNCTION OF THIS ROAD AND AN EXISTING ROAD TO THE NORTHEAST; TURN RIGHT AND PROCEED IN A NORTHEASTERLY DIRECTION APPROXIMATELY 0.9 MILES TO THE BEGINNING OF THE PROPOSED ACCESS TO THE EAST; FOLLOW ROAD FLAGS IN AN EASTERLY DIRECTION APPROXIMATELY 75' TO THE PROPOSED LOCATION.

TOTAL DISTANCE FROM JAL, NEW MEXICO TO THE PROPOSED LOCATION IS APPROXIMATELY 35.6 MILES.



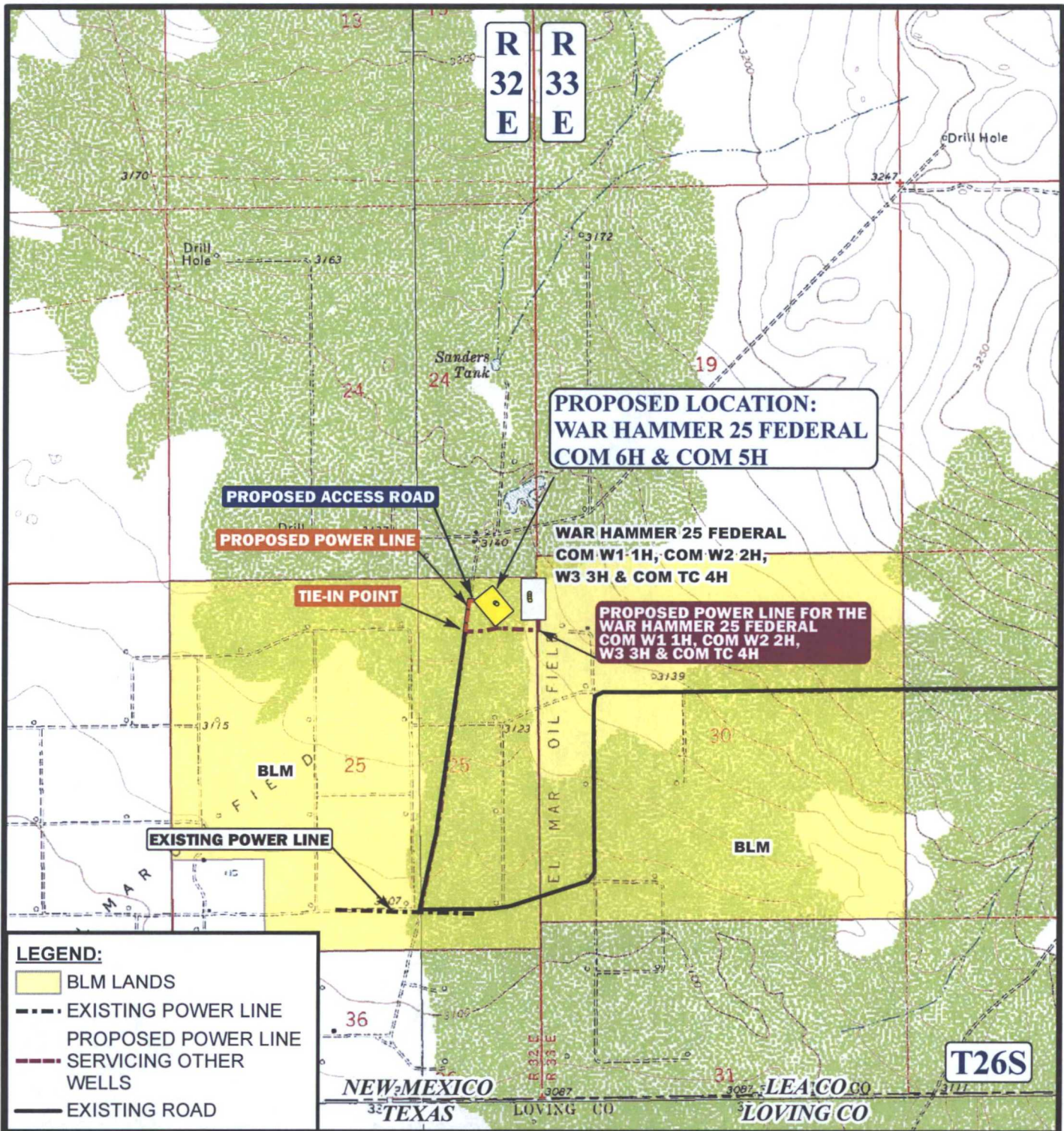
THIS IS TO CERTIFY THAT THE ABOVE PLAT WAS PREPARED FROM FIELD NOTES OF ACTUAL SURVEYS MADE BY ME OR UNDER MY SUPERVISION AND THAT THE SAME ARE TRUE AND CORRECT TO THE BEST OF MY KNOWLEDGE AND BELIEF.

CERTIFICATE OF PROFESSIONAL SURVEY

REGISTERED LAND SURVEYOR
REGISTRATION NO. 12446
STATE OF NEW MEXICO

07-01-15

NOTES: 	ConocoPhillips	ConocoPhillips Company	
	WAR HAMMER 25 FEDERAL COM 6H & COM 5H SECTION 25, T26S, R32E, N.M.P.M. NE 1/4 NE 1/4		
Corporate Office * 85 South 200 East Vernal, UT 84078 * (435) 789-1017	DRAWN BY: S.F. DATE: 01-27-14	SCALE: 1" = 300' REVISED: 05-23-14	REVISED: 04-20-15 B.A. REVISED: 06-29-15 T.E.
POWER LINE R-O-W		FIGURE #8	



APPROXIMATE TOTAL POWER LINE DISTANCE = 507' +/-

*PARCEL DATA SHOWN HAS BEEN OBTAINED FROM VARIOUS SOURCES AND SHOULD BE USED FOR MAPPING, GRAPHIC AND PLANNING PURPOSES ONLY. NO WARRANTY IS MADE BY UINTAH ENGINEERING & LAND SURVEYING (UELS) FOR ACCURACY OF THE PARCEL DATA.

SCALE: 1" = 2000'

REV: 05-23-14 M.M.

DRAWN BY: L.S.

REV: 06-30-15 T.I.

DATE DRAWN: 01-06-14



ConocoPhillips

ConocoPhillips Company

WAR HAMMER 25 FEDERAL COM 6H & COM 5H
SECTION 25, T26S, R32E, N.M.P.M.
NE 1/4 NE 1/4

POWER LINE MAP

TOPO E



Corporate Office * 85 South 200 East
Vernal, UT 84078 * (435) 789-1017

MAP 5



MAP 17

Road Bore West Battle Axe - 2 Tinorns

FP Wilder

WAR HAMMER 25 FEDERAL COM 5H

WAR HAMMER 25 FEDERAL COM 6H

PROPOSED Road Bore East Battle Axe

FP Outlaw

FP Lindsay Culvert Lindsay Road - 2 x 24" Tinorns

Google earth

© 2015 Google

N

2 mi