

# HOBBS OCD

District I  
1625 N. French Dr., Hobbs, NM 88240  
Phone: (575) 393-6161 Fax: (575) 393-0720  
District II  
811 S. First St., Artesia, NM 88210  
Phone: (575) 748-1283 Fax: (575) 748-9720  
District III  
1000 Rio Brazos Road, Aztec, NM 87410  
Phone: (505) 334-6178 Fax: (505) 334-6170  
District IV  
1220 S. St. Francis Dr., Santa Fe, NM 87505  
Phone: (505) 476-3460 Fax: (505) 476-3462

AUG 22 2011

RECEIVED

State of New Mexico  
Energy, Minerals & Natural Resources Department  
OIL CONSERVATION DIVISION  
1220 South St. Francis Dr.  
Santa Fe, NM 87505

Form C-102  
Revised August 1, 2011  
Submit one copy to appropriate  
District Office

☐ AMENDED REPORT

## WELL LOCATION AND ACREAGE DEDICATION PLAT

30-025 <sup>1</sup> API Number <b>43392</b>	<sup>2</sup> Pool Code <b>98081</b>	<sup>3</sup> Pool Name <b>Wolfcamp WC-025 G-09 5263225A, WC</b>
<sup>4</sup> Property Code <b>315128</b>	<sup>5</sup> Property Name <b>WAR HAMMER 25 FEDERAL COM</b>	
<sup>7</sup> OGRID No. <b>217817</b>	<sup>8</sup> Operator Name <b>ConocoPhillips Company</b>	<sup>6</sup> Well Number <b>6H</b>
		<sup>9</sup> Elevation <b>3134'</b>

### <sup>10</sup> Surface Location

UL or lot no.	Section	Township	Range	Lot Idn	Feet from the	North/South line	Feet from the	East/West line	County
A	25	26 S	32 E		396	NORTH	603	EAST	LEA

### <sup>11</sup> Bottom Hole Location If Different From Surface

UL or lot no.	Section	Township	Range	Lot Idn	Feet from the	North/South line	Feet from the	East/West line	County
1	36	26 S	32 E		50	SOUTH	1040	EAST	LEA
<sup>12</sup> Dedicated Acres 224.99	<sup>13</sup> Joint or Infill	<sup>14</sup> Consolidation Code		<sup>15</sup> Order No.					

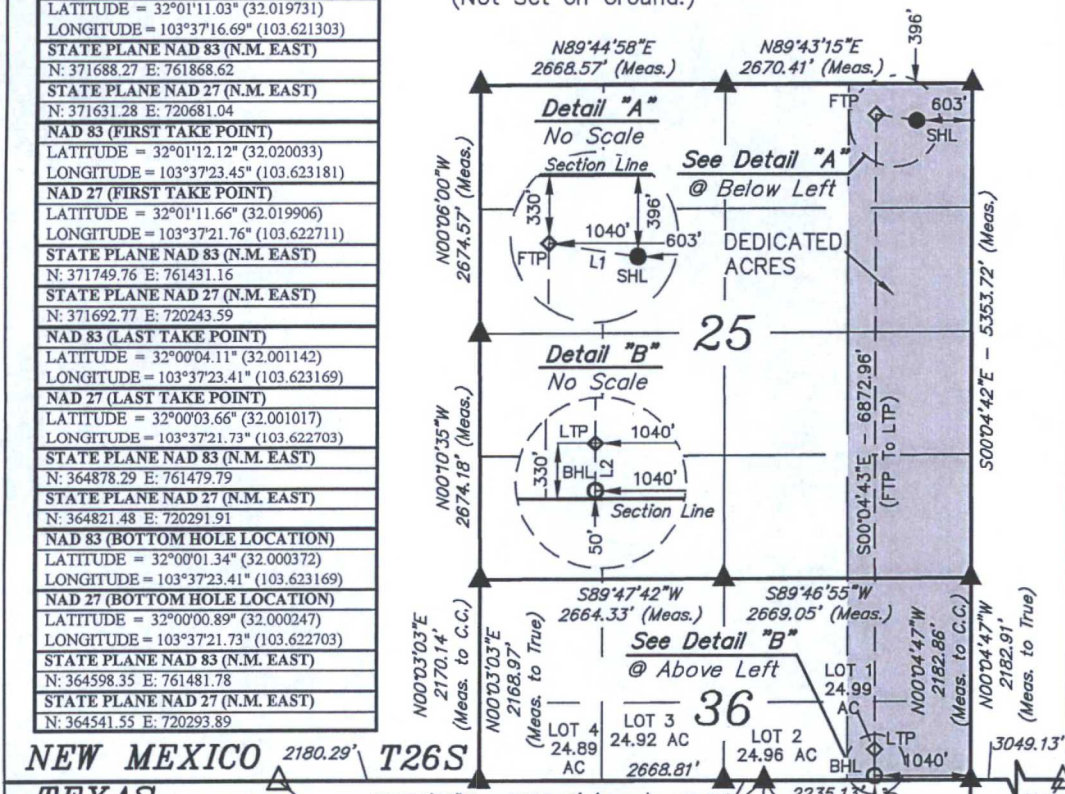
No allowable will be assigned to this completion until all interests have been consolidated or a non-standard unit has been approved by the division.

<b>NAD 83 (SURFACE HOLE LOCATION)</b> LATITUDE = 32°01'11.48" (32.019856) LONGITUDE = 103°37'18.37" (103.621769)
<b>NAD 27 (SURFACE HOLE LOCATION)</b> LATITUDE = 32°01'11.03" (32.019731) LONGITUDE = 103°37'16.69" (103.621303)
<b>STATE PLANE NAD 83 (N.M. EAST)</b> N: 371688.27 E: 761868.62
<b>STATE PLANE NAD 27 (N.M. EAST)</b> N: 371631.28 E: 720681.04
<b>NAD 83 (FIRST TAKE POINT)</b> LATITUDE = 32°01'12.12" (32.020033) LONGITUDE = 103°37'23.45" (103.623181)
<b>NAD 27 (FIRST TAKE POINT)</b> LATITUDE = 32°01'11.66" (32.019906) LONGITUDE = 103°37'21.76" (103.622711)
<b>STATE PLANE NAD 83 (N.M. EAST)</b> N: 371749.76 E: 761431.16
<b>STATE PLANE NAD 27 (N.M. EAST)</b> N: 371692.77 E: 720243.59
<b>NAD 83 (LAST TAKE POINT)</b> LATITUDE = 32°00'04.11" (32.001142) LONGITUDE = 103°37'23.41" (103.623169)
<b>NAD 27 (LAST TAKE POINT)</b> LATITUDE = 32°00'03.66" (32.001017) LONGITUDE = 103°37'21.73" (103.622703)
<b>STATE PLANE NAD 83 (N.M. EAST)</b> N: 364878.29 E: 761479.79
<b>STATE PLANE NAD 27 (N.M. EAST)</b> N: 364821.48 E: 720291.91
<b>NAD 83 (BOTTOM HOLE LOCATION)</b> LATITUDE = 32°00'01.34" (32.000372) LONGITUDE = 103°37'23.41" (103.623169)
<b>NAD 27 (BOTTOM HOLE LOCATION)</b> LATITUDE = 32°00'00.89" (32.000247) LONGITUDE = 103°37'21.73" (103.622703)
<b>STATE PLANE NAD 83 (N.M. EAST)</b> N: 364598.35 E: 761481.78
<b>STATE PLANE NAD 27 (N.M. EAST)</b> N: 364541.55 E: 720293.89

▲ = SECTION CORNERS LOCATED.

△ = SECTION CORNERS RE-ESTABLISHED.  
(Not Set on Ground.)

Note:  
Distances referenced on plat  
to section lines and lease  
lines are perpendicular.



### <sup>17</sup> OPERATOR CERTIFICATION

I hereby certify that the information contained herein is true and complete to the best of my knowledge and belief, and that this organization either owns a working interest or unleased mineral interest in the land including the proposed bottom hole location or has a right to drill this well at this location pursuant to a contract with an owner of such a mineral or working interest, or to a voluntary pooling agreement or a compulsory pooling order heretofore entered by the division.

**Signature** **Date**  
**7/24/15**

**Ashley Bergen**

Printed Name

**ashley.bergen@cop.com**

E-mail Address

### <sup>18</sup> SURVEYOR CERTIFICATION

I hereby certify that the well location shown on this plat was plotted from field notes of actual surveys made by me or under my supervision, and that the same is true and correct to the best of my belief.

December 19, 2013

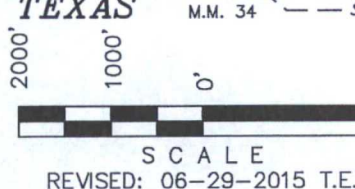
Date of Survey

Signature and Seal of Professional Surveyor:



Certificate Number:

NEW MEXICO  
TEXAS

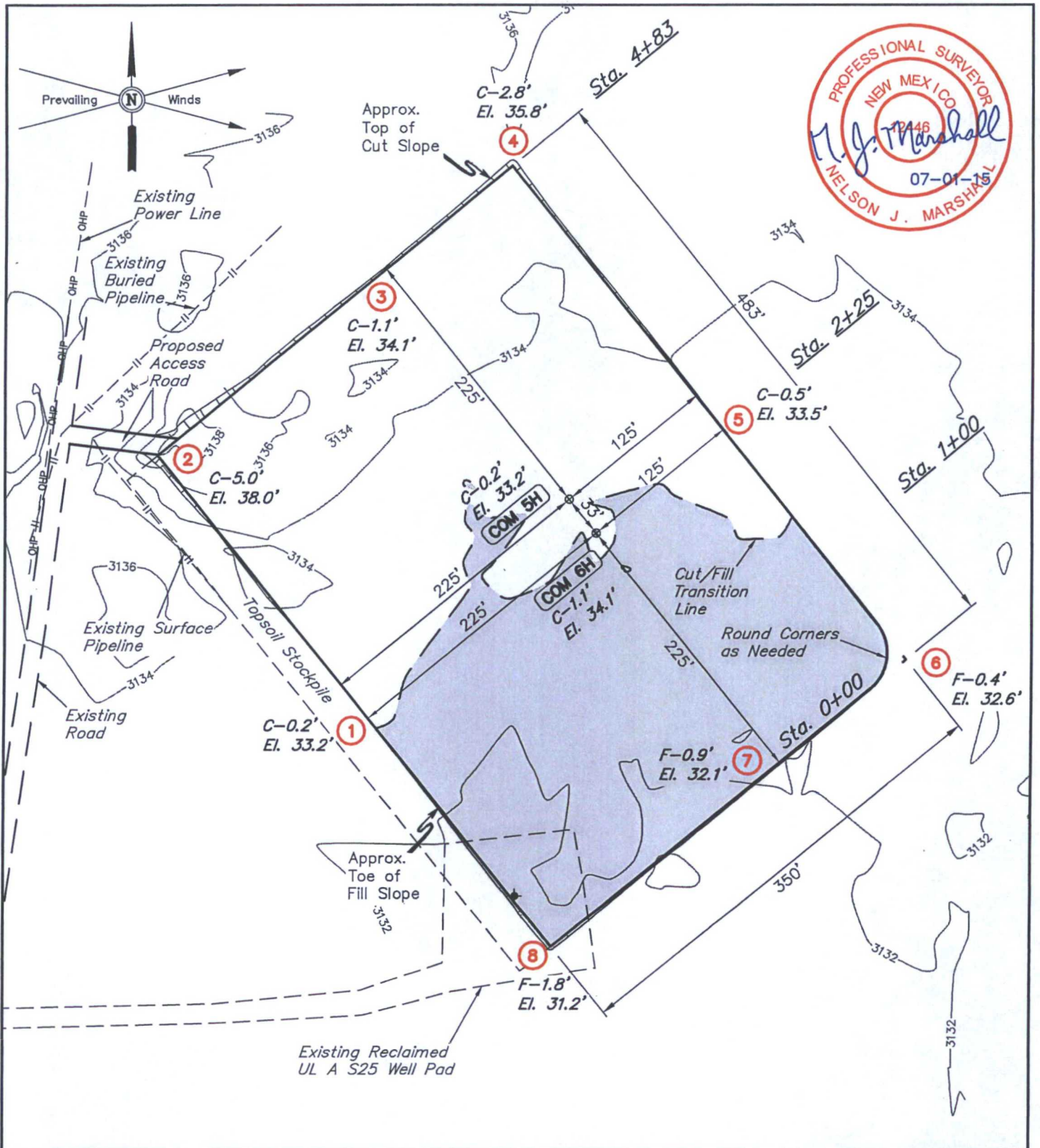


### LINE TABLE

LINE	DIRECTION	LENGTH
L1	N81°40'17"W	441.85'
L2	S00°04'47"E	280.00'

R  
32  
E  
R  
33  
E





ELEV. UNGRADED GROUND AT W2 6H LOC. STAKE = 3134.1' FINISHED GRADE ELEV. AT W2 6H LOC. STAKE = 3133.0'

**NOTES:**

- Flare pit is to be located a min. of 100' from the well head.
- Underground utilities shown on this sheet are for visualization purposes only, actual locations to be determined prior to construction.

ConocoPhillips

**ConocoPhillips Company**

WAR HAMMER 25 FEDERAL COM 6H & COM 5H  
SECTION 25, T26S, R32E, N.M.P.M.  
NE 1/4 NE 1/4

DRAWN BY: S.F.

SCALE: 1" = 100'

REVISED: 06-16-14

DATE: 01-27-14

REVISED: 05-23-14

REVISED: 06-25-15 T.E.

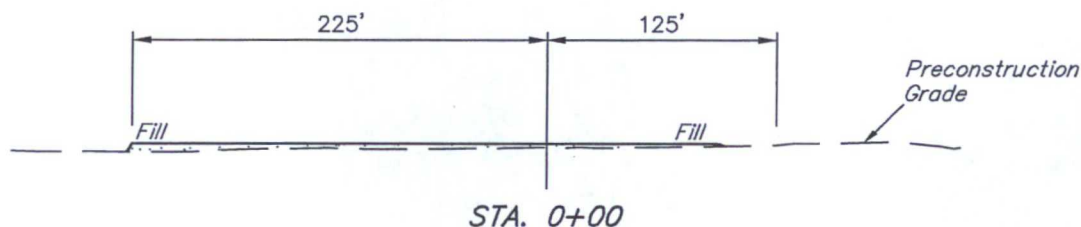
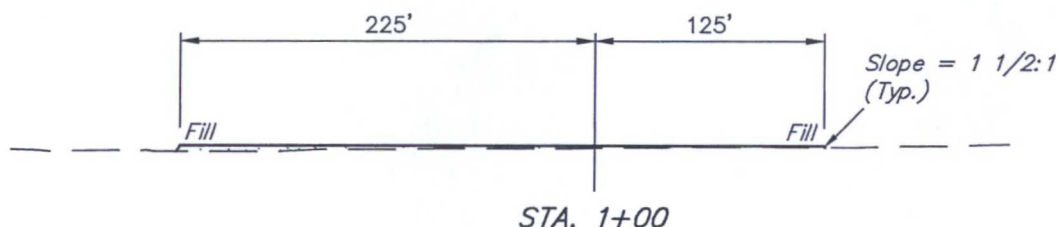
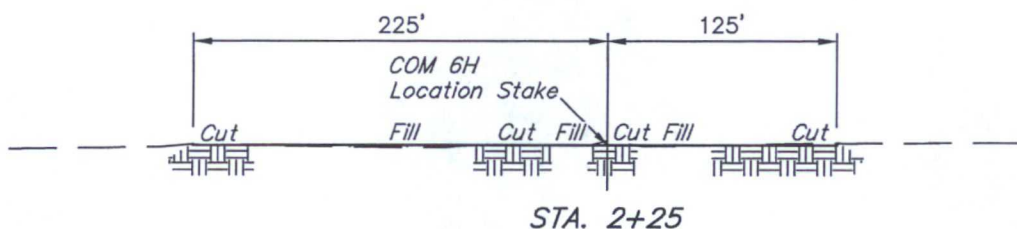
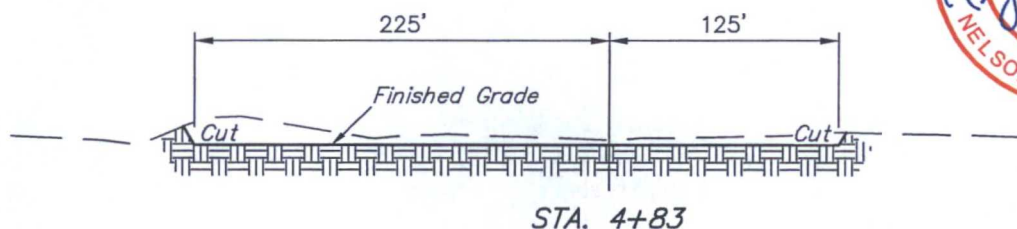
**LOCATION LAYOUT**

**FIGURE #1**



Corporate Office \* 85 South 200 East  
Vernal, UT 84078 \* (435) 789-1017

1" = 40'  
X-Section  
Scale  
1" = 100'



APPROXIMATE EARTHWORK QUANTITIES		APPROXIMATE SURFACE DISTURBANCE AREAS		
(3") TOPSOIL STRIPPING	1,590 Cu. Yds.		DISTANCE	ACRES
REMAINING LOCATION	2,730 Cu. Yds.	WELL SITE DISTURBANCE	NA	±4.264
<b>TOTAL CUT</b>	<b>4,320 Cu. Yds.</b>	ACCESS ROAD DISTURBANCE	±75.26'	±0.052
<b>FILL</b>	<b>2,730 Cu. Yds.</b>	FLOW LINE DISTURBANCE	±1849.38'	±1.274
EXCESS MATERIAL	1,590 Cu. Yds.	POWER LINE DISTURBANCE	±507.34'	±0.349
TOPSOIL	1,590 Cu. Yds.	<b>TOTAL DISTURBANCE</b>		<b>±5.939</b>
<b>EXCESS UNBALANCE</b> (After Interim Rehabilitation)	<b>0 Cu. Yds.</b>			

**NOTES:**

- Fill quantity includes 5% for compaction.

ConocoPhillips

**ConocoPhillips Company**

WAR HAMMER 25 FEDERAL COM 6H & COM 5H  
SECTION 25, T26S, R32E, N.M.P.M.  
NE 1/4 NE 1/4

DRAWN BY: S.F. SCALE: AS SHOWN REVISED: 04-20-15 B.A.  
DATE: 01-27-14 REVISED: 03-13-15 H.W. REVISED: 06-25-15 T.E.

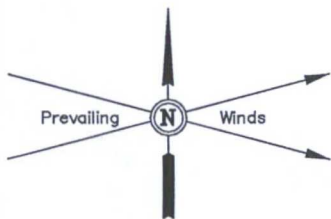


Corporate Office \* 85 South 200 East  
Vernal, UT 84078 \* (435) 789-1017

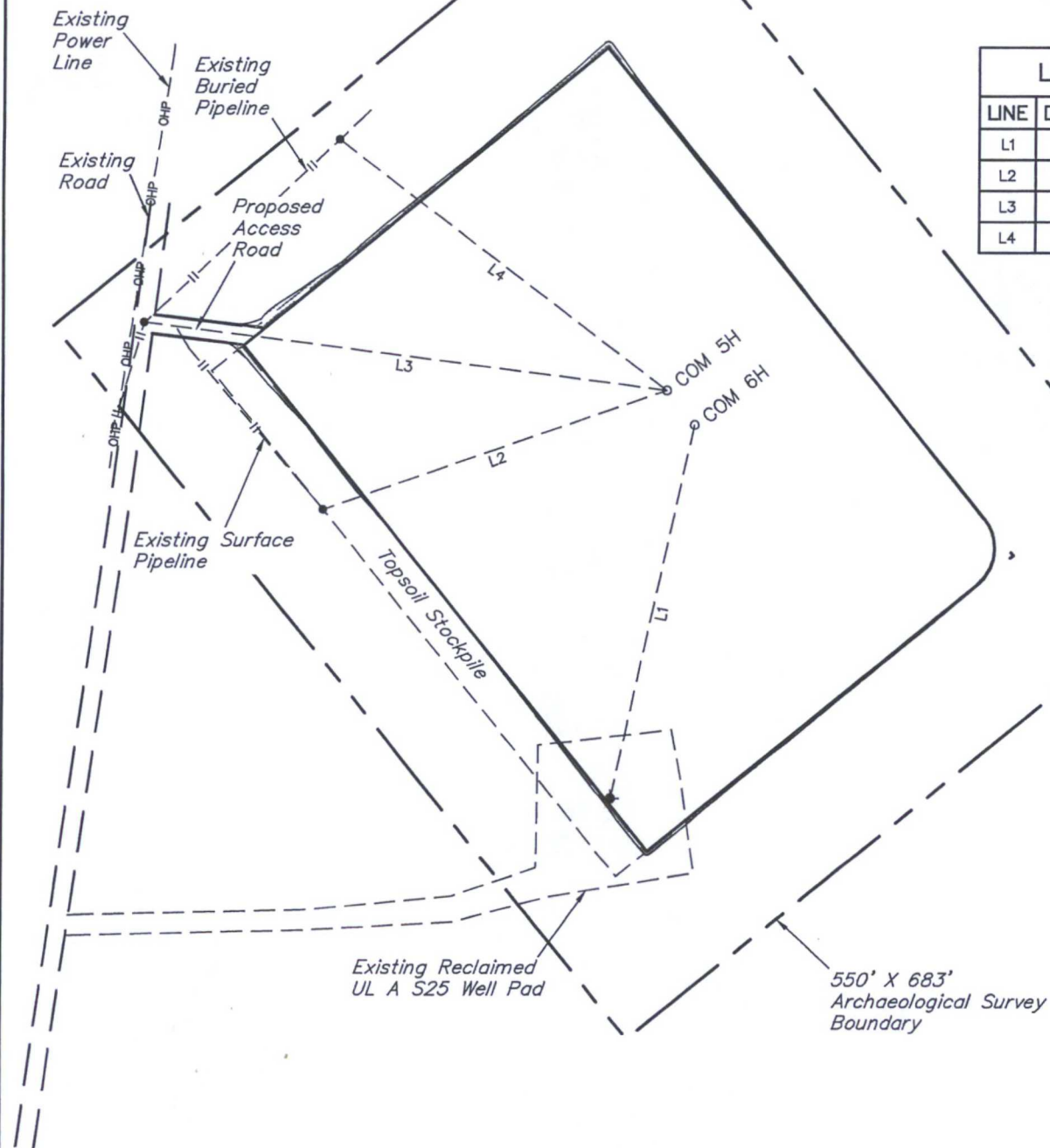
**TYPICAL CROSS SECTIONS**

**FIGURE #2**





LINE TABLE		
LINE	DIRECTION	LENGTH
L1	S12°W	284'
L2	S71°W	272'
L3	N83°W	393'
L4	N53°W	308'



**NOTES:**

ConocoPhillips

**ConocoPhillips Company**

**WAR HAMMER 25 FEDERAL COM 6H & COM 5H  
SECTION 25, T26S, R32E, N.M.P.M.  
NE 1/4 NE 1/4**

DRAWN BY: S.F.

SCALE: 1" = 120'

REVISED: 06-25-15 T.E.

DATE: 01-27-14

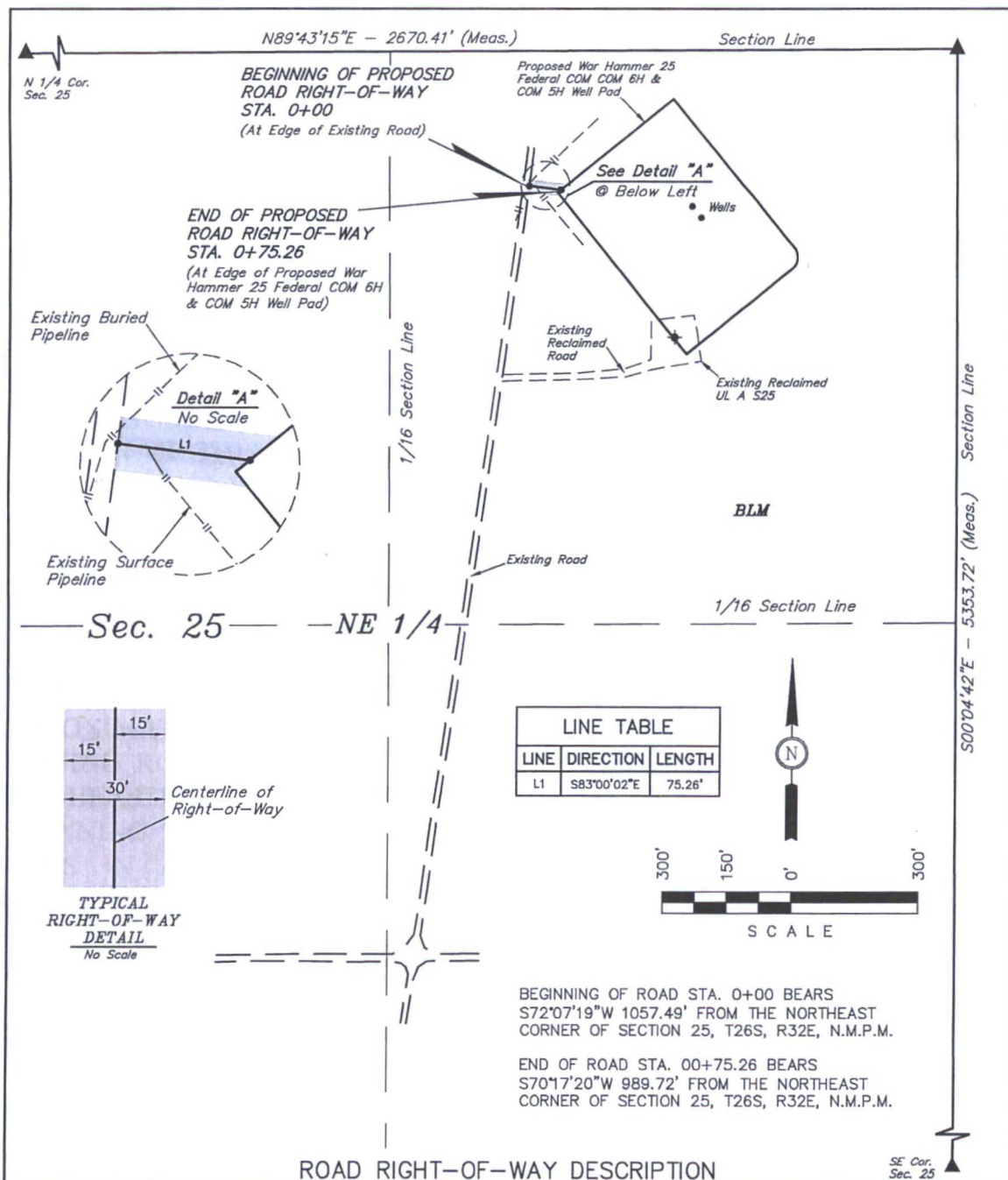
REVISED: 05-23-14

**ARCHAEOLOGICAL SURVEY  
BOUNDARY**

**FIGURE #5**



Corporate Office \* 85 South 200 East  
Vernal, UT 84078 \* (435) 789-1017



A 30' WIDE RIGHT-OF-WAY 15' ON EACH SIDE OF THE FOLLOWING DESCRIBED CENTERLINE.

BEGINNING AT A POINT IN THE NE 1/4 NE 1/4 OF SECTION 25, T26S, R32E, N.M.P.M., WHICH BEARS S72°07'19"W 1057.49' FROM THE NORTHEAST CORNER OF SAID SECTION 25, THENCE S83°00'02"E 75.26' TO A POINT IN THE NE 1/4 NE 1/4 OF SAID SECTION 25, WHICH BEARS S70°17'20"W 989.72' FROM THE NORTHEAST CORNER OF SAID SECTION 25. THE SIDE LINES OF SAID DESCRIBED RIGHT-OF-WAY BEING SHORTENED OR ELONGATED TO MEET THE GRANTOR'S PROPERTY LINES. BASIS OF BEARINGS IS A G.P.S. OBSERVATION. CONTAINS 0.052 ACRES MORE OR LESS.

RIGHT-OF-WAY LENGTHS			
DESCRIPTION	FEET	ACRES	RODS
TOTAL	75.26	0.052	4.56

▲ = SECTION CORNERS LOCATED.

NOTES:

- \* The maximum grade of existing ground for the proposed access road is  $\pm 4\%$ .

CERTIFICATE

THIS IS TO CERTIFY THAT THE ABOVE PLAT WAS PREPARED FROM FIELD NOTES OF ACTUAL SURVEYS MADE BY ME OR UNDER MY SUPERVISION AND THAT THE SAME ARE TRUE AND CORRECT TO THE BEST OF MY KNOWLEDGE AND BELIEF.

REGISTERED LAND SURVEYOR  
REGISTRATION NO. 12446  
STATE OF NEW MEXICO

07-01-15

ConocoPhillips

ConocoPhillips Company

WAR HAMMER 25 FEDERAL COM 6H & COM 5H  
SECTION 25, T26S, R32E, N.M.P.M.  
NE 1/4 NE 1/4

DRAWN BY: S.F.

SCALE: 1" = 300'

REVISED: 04-20-15 B.A.

DATE: 01-27-14

REVISED: 03-13-15 H.W.

REVISED: 06-29-15 T.E.

ACCESS ROAD R-O-W

FIGURE #6



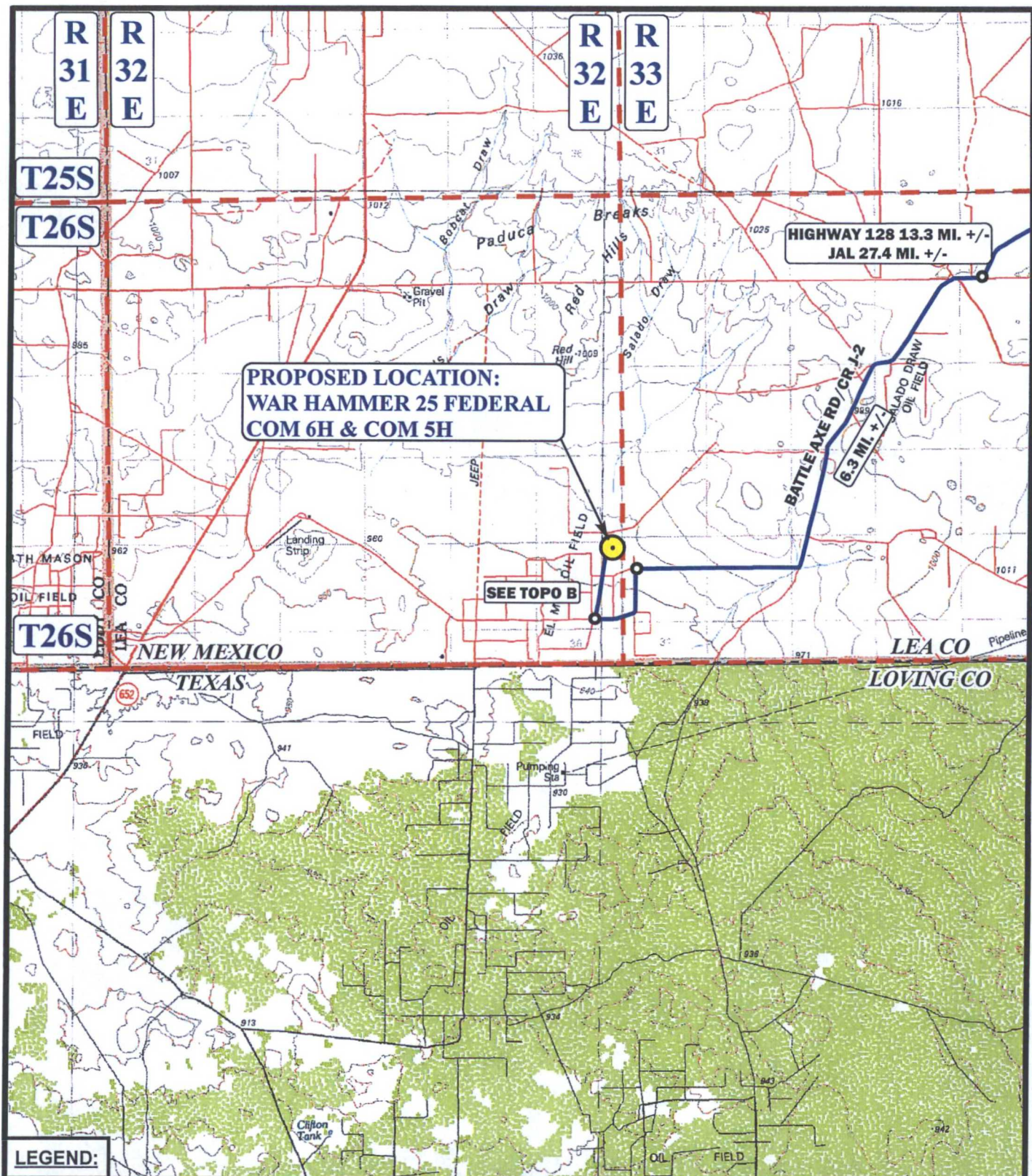
Corporate Office \* 85 South 200 East  
Vernal, UT 84078 \* (435) 789-1017

**ConocoPhillips Company**  
**WAR HAMMER 25 FEDERAL COM 6H & COM 5H**  
**SECTION 25, T26S, R32E, N.M.P.M.**

BEGINNING AT THE INTERSECTION OF HIGHWAY 18 AND HIGHWAY 128 PROCEED IN A WESTERLY, THEN NORTHWESTERLY DIRECTION FROM JAL, NEW MEXICO ALONG HIGHWAY 128 APPROXIMATELY 14.1 MILES TO THE JUNCTION OF THIS ROAD AND BATTLE AXE ROAD TO THE SOUTHWEST; TURN LEFT AND PROCEED IN A SOUTHWESTERLY, THEN WESTERLY, THEN SOUTHERLY, THE SOUTHWESTERLY DIRECTION APPROXIMATELY 13.3 MILES TO THE JUNCTION OF THIS ROAD AND BATTLE AXE ROAD/CR J-2 TO THE WEST; TURN RIGHT AND PROCEED IN A WESTERLY, THEN SOUTHWESTERLY, THEN WESTERLY DIRECTION APPROXIMATELY 6.3 MILES TO THE JUNCTION OF THIS ROAD AND CR J-1/CR J-2 TO THE SOUTH; TURN LEFT AND PROCEED IN A SOUTHERLY, THEN WESTERLY DIRECTION APPROXIMATELY 1.0 MILES TO THE JUNCTION OF THIS ROAD AND AN EXISTING ROAD TO THE NORTHEAST; TURN RIGHT AND PROCEED IN A NORTHEASTERLY DIRECTION APPROXIMATELY 0.9 MILES TO THE BEGINNING OF THE PROPOSED ACCESS TO THE EAST; FOLLOW ROAD FLAGS IN AN EASTERLY DIRECTION APPROXIMATELY 75' TO THE PROPOSED LOCATION.

TOTAL DISTANCE FROM JAL, NEW MEXICO TO THE PROPOSED LOCATION IS APPROXIMATELY 35.6 MILES.





SCALE: 1:100,000	REV: 05-23-14 M.M.
DRAWN BY: L.S.	REV: 06-30-15 T.I.
DATE DRAWN: 01-06-14	



Corporate Office \* 85 South 200 East  
Vernal, UT 84078 \* (435) 789-1017



ConocoPhillips

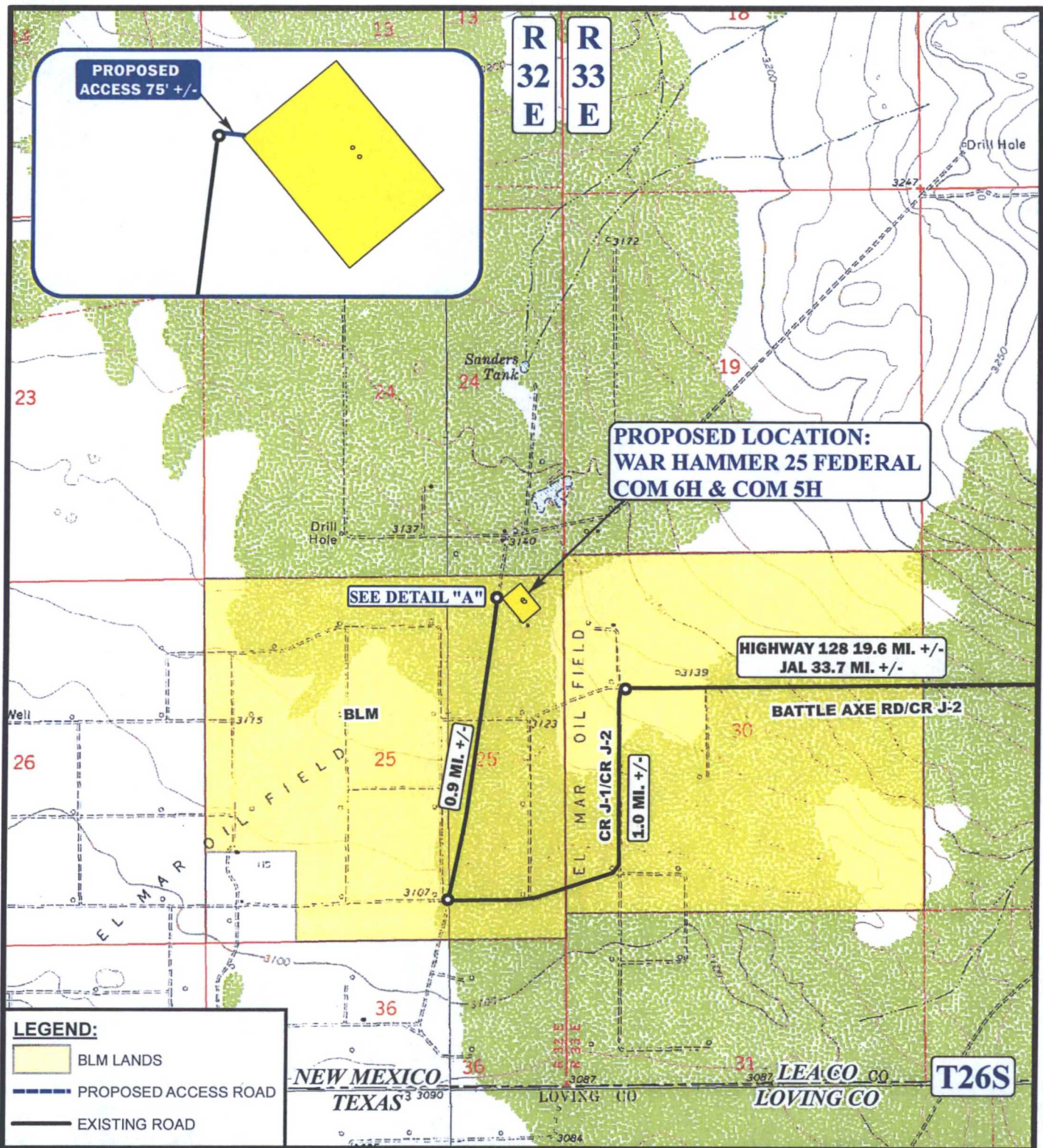
ConocoPhillips Company

**WAR HAMMER 25 FEDERAL COM 6H & COM 5H**  
**SECTION 25, T26S, R32E, N.M.P.M.**  
**NE 1/4 NE 1/4**

**ACCESS ROAD MAP**

**TOPO A**





\*PARCEL DATA SHOWN HAS BEEN OBTAINED FROM VARIOUS SOURCES AND SHOULD BE USED FOR MAPPING, GRAPHIC AND PLANNING PURPOSES ONLY. NO WARRANTY IS MADE BY UINTAH ENGINEERING & LAND SURVEYING (UELS) FOR ACCURACY OF THE PARCEL DATA.

SCALE: 1" = 2000' REV: 05-23-14 M.M.  
DRAWN BY: L.S. REV: 06-30-15 T.I.  
DATE DRAWN: 01-06-14



ConocoPhillips

ConocoPhillips Company

WAR HAMMER 25 FEDERAL COM 6H & COM 5H  
SECTION 25, T26S, R32E, N.M.P.M.  
NE 1/4 NE 1/4

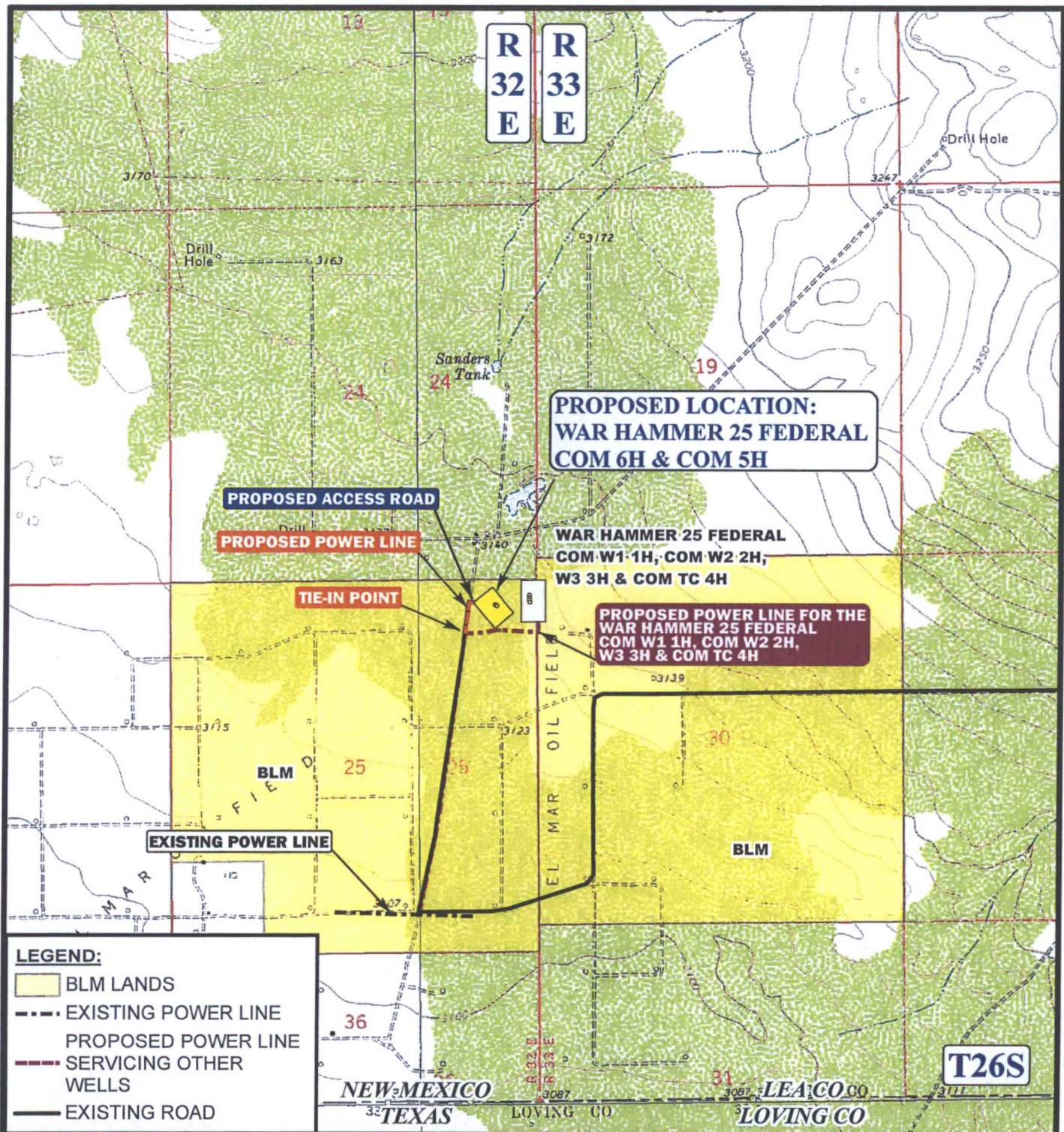
ACCESS ROAD MAP

TOPO B



Corporate Office \* 85 South 200 East  
Vernal, UT 84078 \* (435) 789-1017





**APPROXIMATE TOTAL POWER LINE DISTANCE = 507' +/-**

\*PARCEL DATA SHOWN HAS BEEN OBTAINED FROM VARIOUS SOURCES AND SHOULD BE USED FOR MAPPING, GRAPHIC AND PLANNING PURPOSES ONLY. NO WARRANTY IS MADE BY UINTAH ENGINEERING & LAND SURVEYING (UELS) FOR ACCURACY OF THE PARCEL DATA.

SCALE: 1" = 2000'	REV: 05-23-14 M.M.
DRAWN BY: L.S.	REV: 06-30-15 T.I.
DATE DRAWN: 01-06-14	



ConocoPhillips

ConocoPhillips Company

WAR HAMMER 25 FEDERAL COM 6H & COM 5H  
SECTION 25, T26S, R32E, N.M.P.M.  
NE 1/4 NE 1/4

POWER LINE MAP

TOPO E



Corporate Office \* 85 South 200 East  
Vernal, UT 84078 \* (435) 789-1017



MAP 17

Road Bore West Battle Axe - 2 Tin horns

FP Wilder

WAR HAMMER 25 FEDERAL COM 5H

WAR HAMMER 25 FEDERAL COM 6H

PROPOSED Road Bore East Battle Axe

FP Outlaw

FP Lindsay Culvert Lindsay Road - 2 x 24" Tin horns

Google earth

© 2015 Google

N

2 mi



# MAP 5

