

District I  
1625 N. French Dr., Hobbs, NM 88240  
Phone: (575) 393-6161 Fax: (575) 393-0720  
District II  
811 S. First St., Artesia, NM 88210  
Phone: (575) 748-1283 Fax: (575) 748-9720  
District III  
1000 Rio Brazos Road, Aztec, NM 87410  
Phone: (505) 334-6178 Fax: (505) 334-6170  
District IV  
1220 S. St. Francis Dr., Santa Fe, NM 87505  
Phone: (505) 476-3460 Fax: (505) 476-3462

State of New Mexico  
Energy, Minerals & Natural Resources Department  
OIL CONSERVATION DIVISION  
1220 South St. Francis Dr.  
Santa Fe, NM 87505

HOBBS OCD  
AUG 22 2016  
RECEIVED

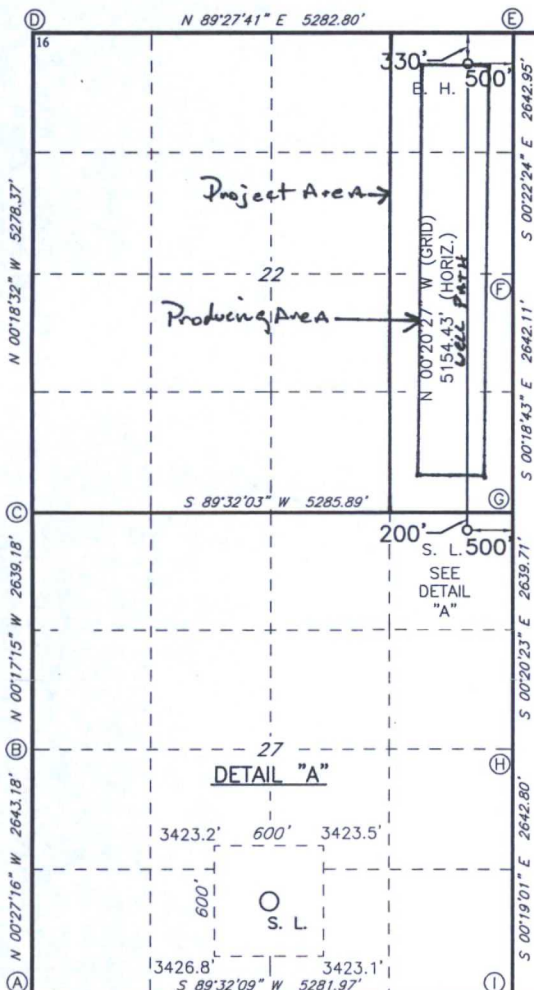
Form C-102  
Revised August 1, 2011  
Submit one copy to appropriate  
District Office

☐ AMENDED REPORT

WELL LOCATION AND ACREAGE DEDICATION PLAT

<sup>1</sup> API Number <b>30-025-43393</b>		<sup>2</sup> Pool Code <b>96553</b>		<sup>3</sup> Pool Name <b>OJO CHISO BONE SPRING</b>					
<sup>4</sup> Property Code <b>316750</b>		<sup>5</sup> Property Name <b>PERRO LOCO 22 B3PA FED</b>							
<sup>7</sup> OGRID NO. <b>14744</b>		<sup>8</sup> Operator Name <b>MEWBOURNE OIL COMPANY</b>							
<sup>9</sup> Well Number <b>1H</b>									
<sup>9</sup> Elevation <b>3424'</b>									
<sup>10</sup> Surface Location									
UL or lot no. <b>A</b>	Section <b>27</b>	Township <b>22S</b>	Range <b>34E</b>	Lot Idn <b>200</b>	Feet from the <b>200</b>	North/South line <b>NORTH</b>	Feet From the <b>500</b>	East/West line <b>EAST</b>	County <b>LEA</b>
<sup>11</sup> Bottom Hole Location If Different From Surface									
UL or lot no. <b>A</b>	Section <b>22</b>	Township <b>22S</b>	Range <b>34E</b>	Lot Idn <b>330</b>	Feet from the <b>330</b>	North/South line <b>NORTH</b>	Feet from the <b>500</b>	East/West line <b>EAST</b>	County <b>LEA</b>
<sup>12</sup> Dedicated Acres <b>160</b>		<sup>13</sup> Joint or Infill		<sup>14</sup> Consolidation Code		<sup>15</sup> Order No.			

No allowable will be assigned to this completion until all interest have been consolidated or a non-standard unit has been approved by the division.



**GEODETIC DATA**  
NAD 27 GRID - NM EAST  
**SURFACE LOCATION**  
N: 499177.6 - E: 772581.9  
LAT: 32.36926342° N  
LONG: 103.45048023° W  
**BOTTOM HOLE**  
N: 504331.1 - E: 772551.3  
**CORNER DATA**  
NAD 27 GRID - NM EAST  
A: FOUND BRASS CAP "1918"  
N: 494057.3 - E: 767830.0  
B: FOUND BRASS CAP "1918"  
N: 496700.0 - E: 767809.0  
C: CALCULATED CORNER  
N: 499338.7 - E: 767795.8  
D: FOUND BRASS CAP "1918"  
N: 504616.1 - E: 767767.3  
E: FOUND BRASS CAP "1918"  
N: 504665.8 - E: 773049.0  
F: FOUND BRASS CAP "1918"  
N: 502023.3 - E: 773066.2  
G: FOUND BRASS CAP "1918"  
N: 499381.7 - E: 773080.6  
H: FOUND BRASS CAP "1918"  
N: 496742.4 - E: 773096.3  
I: FOUND BRASS CAP "1918"  
N: 494100.1 E: 773110.9

**17 OPERATOR CERTIFICATION**

I hereby certify that the information contained herein is true and complete to the best of my knowledge and belief, and that this organization either owns a working interest or unleased mineral interest in the land including the proposed bottom hole location or has a right to drill this well at this location pursuant to a contract with an owner of such a mineral or working interest, or to a voluntary pooling agreement or a compulsory pooling order heretofore entered by the division.

Signature: **Bradley Bishop** Date: **2-19-15**  
Printed Name: **BRADLEY BISHOP**

E-mail Address

**18 SURVEYOR CERTIFICATION**

I hereby certify that the well location shown on this plat was plotted from field notes of actual surveys made by me or under my supervision, and that the same is true and correct to the best of my belief.

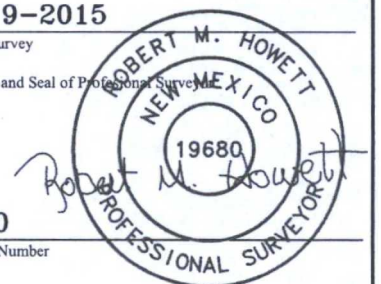
**1-19-2015**

Date of Survey

Signature and Seal of Professional Surveyor

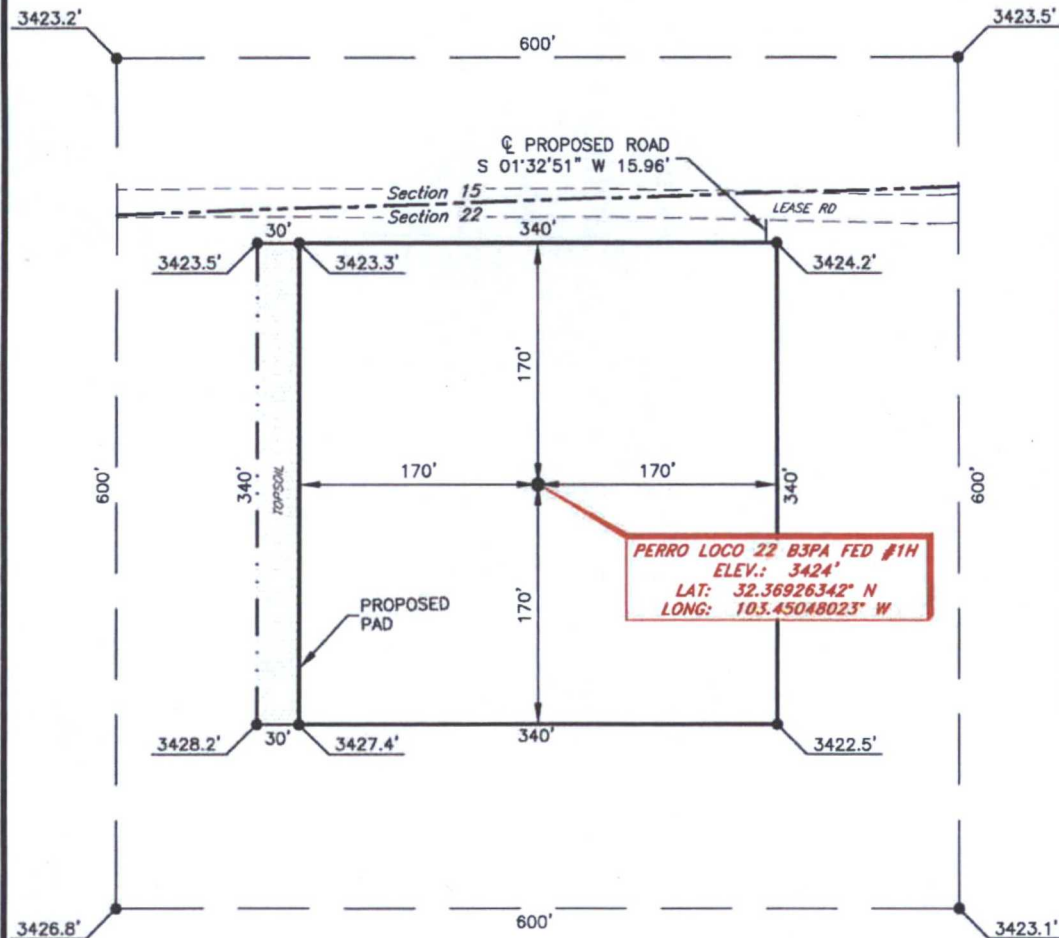
**19680**

Certificate Number



## MEWBOURNE OIL COMPANY

PERRO LOCO 22 B3PA FED #1H  
 (200' FNL & 500' FEL)  
 SECTION 27, T22S, R34E  
 N. M. P. M., LEA COUNTY, NEW MEXICO

DIRECTIONS TO LOCATION

From the intersection of Adobe Road (CR-E21) and Delaware Basin Road (CR-21)  
 Go East on CR-21 for approx. 1.3 miles to CR-32;

Turn left and go approx. 3.2 miles to a lease road on the left;

Turn left on lease road and go Northwest approx. 0.7 miles;

Location is approx. 170 feet South side lease road.

SCALE: 1" = 100'  
 0 50 100  
 BEARINGS ARE  
 NAD 27 GRID - NM EAST  
 DISTANCES ARE GROUND

Firm No.: TX 10193838 NM 4655451

Copyright 2014 - All Rights Reserved

NO.	REVISION	DATE
JOB NO.:	LS140582	
DWG. NO.:	140582PAD	

**RRC**

308 W. BROADWAY ST., HOBBS, NM 88240 (575) 964-8200

SCALE: 1" = 100'
DATE: 1-19-2015
SURVEYED BY: ML/SM
DRAWN BY: CMJ
APPROVED BY: RMH
SHEET : 1 OF 1



## VICINITY MAP

NOT TO SCALE



*SECTION 27, TWP. 22 SOUTH, RGE. 34 EAST,  
N. M. P. M., LEA CO., NEW MEXICO*

OPERATOR: Mewbourne Oil CompanyLOCATION: 200' FNL & 500' FELLEASE: Perro Loco 22 B3PA FedELEVATION: 3424'WELL NO.: 1H

Firm No.: TX 10193838 NM 4655451

Copyright 2014 - All Rights Reserved

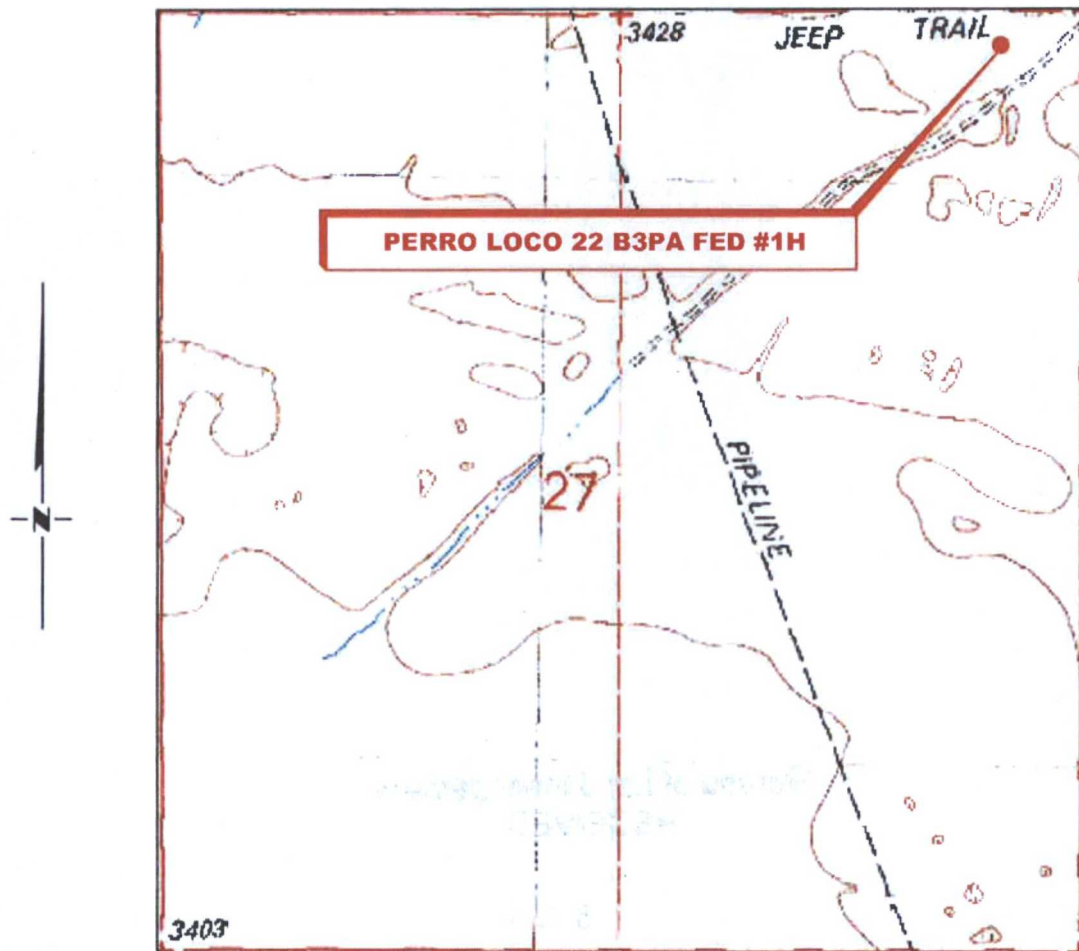
NO.	REVISION	DATE
JOB NO.:	LS140582	
DWG. NO.:	140582VM	

# RRC

308 W. BROADWAY ST., HOBBS, NM 88240 (575) 964-8200

SCALE: NTS
DATE: 1-19-2015
SURVEYED BY: ML/SM
DRAWN BY: CMJ
APPROVED BY: RMH
SHEET : 1 OF 1

# LOCATION VERIFICATION MAP



**SECTION 27, TWP. 22 SOUTH, RGE. 34 EAST,  
N. M. P. M., LEA CO., NEW MEXICO**

OPERATOR: Mewbourne Oil Company  
LEASE: Perro Loco 22 B3PA Fed  
WELL NO.: 1H  
ELEVATION: 3424'

LOCATION: 200' FNL & 500' FEL  
CONTOUR INTERVAL:  
USGS TOPO. SOURCE MAP:  
San Simon Sink, NM (1984)

Firm No.: TX 10193838 NM 4655451

Copyright 2014 - All Rights Reserved

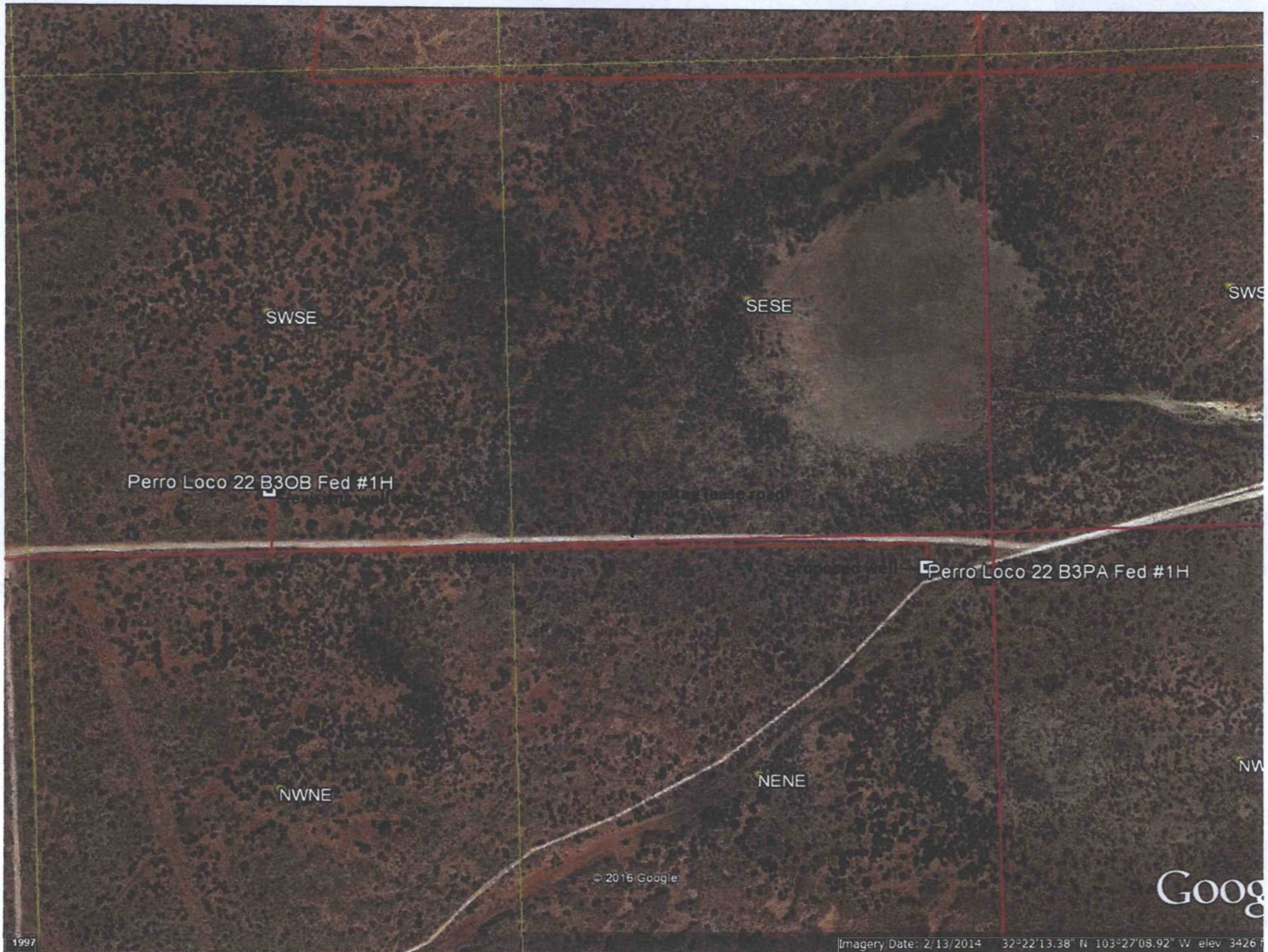
NO.	REVISION	DATE
JOB NO.:	LS140582	
DWG. NO.:	140582VM	

# RRC

308 W. BROADWAY ST., HOBBS, NM 88240 (575) 964-8200

SCALE: 1"=1000'
DATE: 1-19-2015
SURVEYED BY: ML/SM
DRAWN BY: CMJ
APPROVED BY: RMH
SHEET : 1 OF 1





SWSE

SESE

SWS

Perro Loco 22 B3OB Fed #1H

Exposed wall

Exposed wall

Perro Loco 22 B3PA Fed #1H

NWNE

NENE

NW

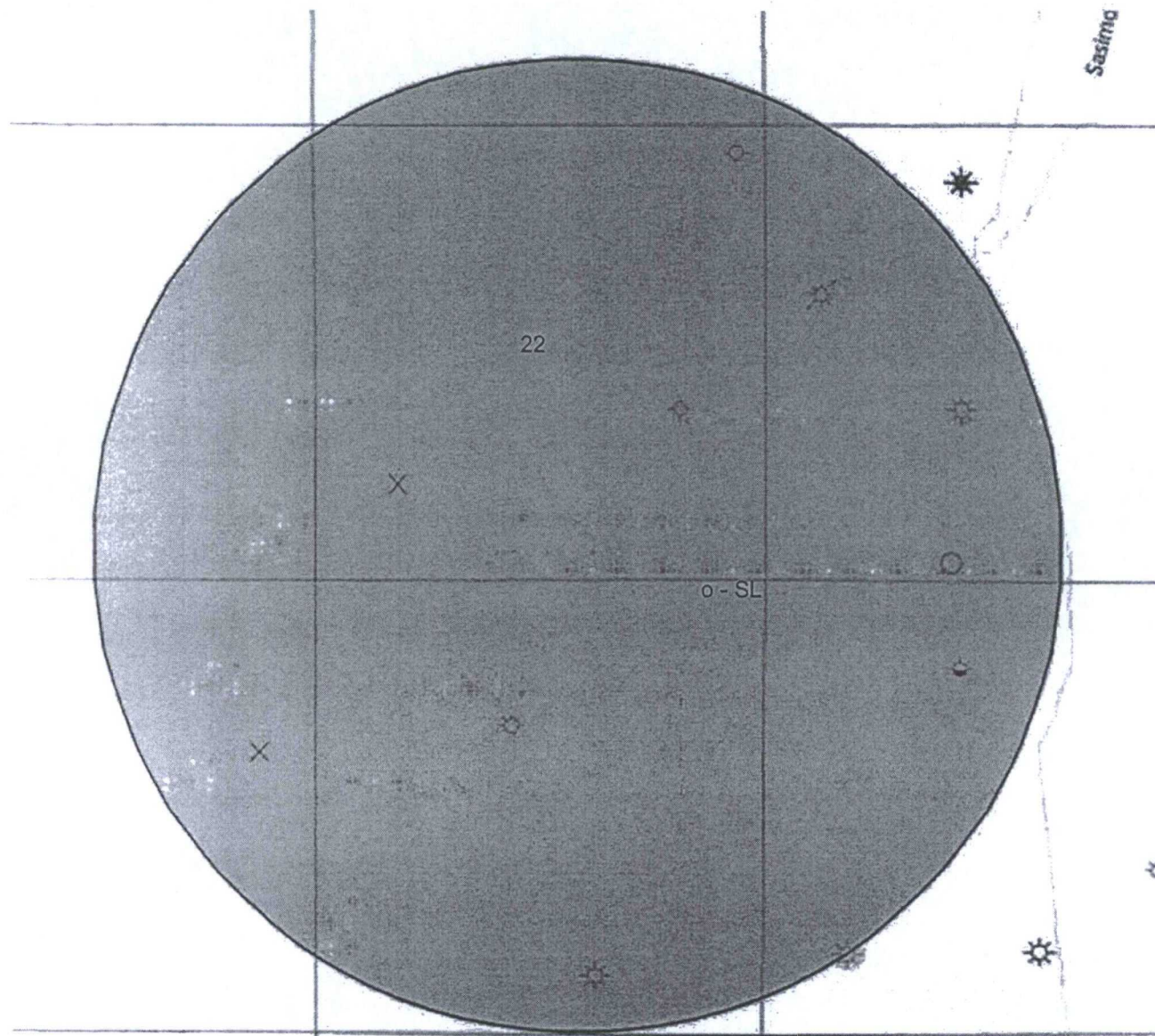
© 2016 Google

Goog

1997

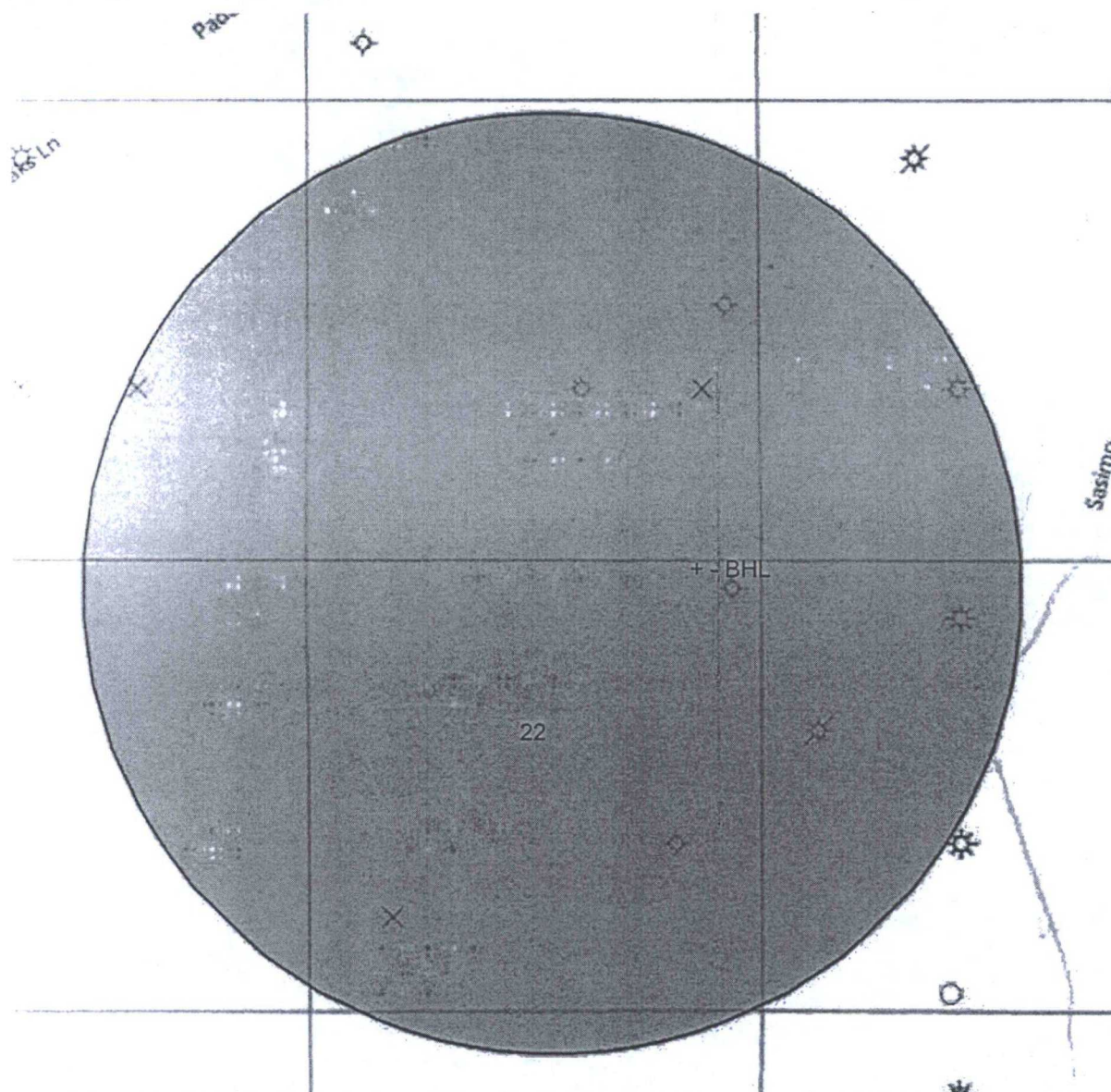
Imagery Date: 2/13/2014 32°22'13.38" N 103°27'08.92" W elev 3426 f





- Drilling (Well Start)
- x Abandoned Location (Permit)
- ✱ Gas Well
- Oil Well
- ✱ Oil and Gas Well
- Other (Observation, etc)
- ✱ Injection Well
- Suspended
- ✱ Plugged Gas Well
- ✱ Plugged Oil Well
- ✱ Plugged Oil and Gas
- ◇ Dry Hole (No Show)
- ◇ Dry Hole w/Gas Show
- ◇ Dry Hole w/Oil Show
- ◇ Dry Hole w/Oil and Gas Show

Perro Loco 22 B3PA Federal #1H - SL - 200' FNL & 500' FEL, Sec. 27 T22S R34E, Lea Co. NM



- Drilling (Well Start)
- × Abandoned Location (Permit)
- ★ Gas Well
- Oil Well
- ★ Oil and Gas Well
- Other (Observation, etc)
- Injection Well
- Suspended
- × Plugged Gas Well
- × Plugged Oil Well
- × Plugged Oil and Gas
- ◇ Dry Hole (No Shows)
- ◇ Dry Hole w/Gas Show
- ◇ Dry Hole w/Oil Show
- ◇ Dry Hole w/Oil and Gas Show

Perro Loco 22 B3PA Federal #1H - BHL - 330' FNL & 500' FEL, Sec. 22 T22S R34E, Lea Co. NM