

District I
1625 N. French Dr., Hobbs, NM 88240
Phone: (575) 393-6161 Fax: (575) 393-2070
District II
811 S. First St., Artesia, NM 88210
Phone: (575) 748-1283 Fax: (575) 748-9720
District III
1000 Rio Brazos Road, Aztec, NM 87410
Phone: (505) 334-6178 Fax: (505) 334-6170
District IV
1220 S. St. Francis Dr., Santa Fe, NM 87505
Phone: (505) 476-3460 Fax: (505) 476-3462

HOBBS OCD
SEP 01 2016
RECEIVED

State of New Mexico
Energy, Minerals & Natural Resources Department
OIL CONSERVATION DIVISION
1220 South St. Francis Dr.
Santa Fe, NM 87505

Form C-102
Revised August 1, 2011
Submit one copy to appropriate
District Office

☐ AMENDED REPORT

WELL LOCATION AND ACREAGE DEDICATION PLAT

¹ API Number 30-025-42313	² Pool Code 19190	³ Pool Name Drinkard
⁴ Property Code 39742	⁵ Property Name NORWAY STATE	⁶ Well Number 2
⁷ OGRID No. 13837	⁸ Operator Name MACK ENERGY CORPORATION	⁹ Elevation 3501.3

¹⁰ Surface Location

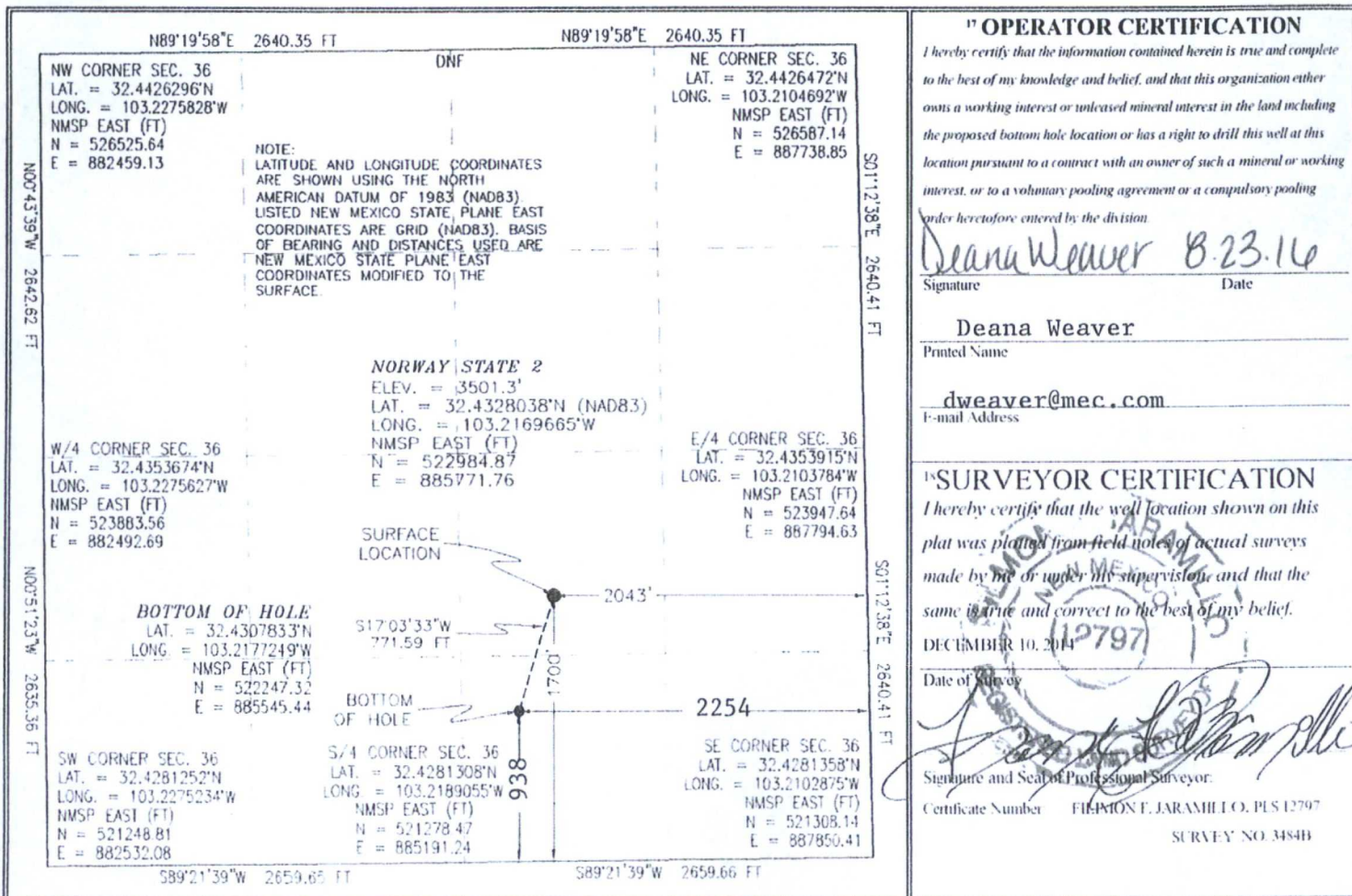
U/L or lot no.	Section	Township	Range	Lot Idn	Feet from the	North/South line	Feet from the	East/West line	County
J	36	21 S	36 E		1700	SOUTH	2043	EAST	LEA

¹¹ Bottom Hole Location If Different From Surface

U/L or lot no.	Section	Township	Range	Lot Idn	Feet from the	North/South line	Feet from the	East/West line	County
O	36	21 S	36 E		938	SOUTH	2254	EAST	LEA

¹² Dedicated Acres	¹³ Joint or Infill	¹⁴ Consolidation Code	¹⁵ Order No.
-------------------------------	-------------------------------	----------------------------------	-------------------------

No allowable will be assigned to this completion until all interests have been consolidated or a non-standard unit has been approved by the division.



MEMO

DATE: August 22, 2016
TO: NMOCD
FROM: STACI SANDERS
MACK ENERGY CORPORATION
RE: DOWNHOLE COMMINGLE
NORWAY STATE #2 WELL
STATE OF NM LEASE B-1167-70
1,700' FSL & 2,043' FEL
NW/4 SE/4 SECTION 36, T21S, R36E
LEA COUNTY, NEW MEXICO

HOTEL OCD

SEP 01 2016

RECEIVED

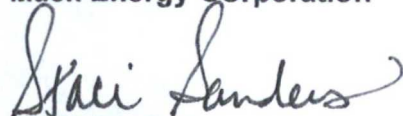
Mack Energy Corporation respectfully requests approval to downhole commingle production from the Blinebry and the Drinkard/Abo formations in our Norway State #2 Well.

All formations have identical working and net revenue interests (see attached list).

Please do not hesitate to contact me should you require any further information.

Sincerely,

Mack Energy Corporation



Staci Sanders
Land Manager

Norway State Lease
ST of NM Lease B-1167-70
All depths below 4,000'

Interest Owners:

Commissioner of Public Lands P.O. Box 1148 Santa Fe, NM 87504-1148	RI
McBride Oil and Gas Corporation P.O. Box 1515 Roswell, NM 88202	OR
Breckenridge Partnership P.O. Box 1973 Roswell, NM 88202-1973	OR
David Petroleum Corporation 116 W. First Street Roswell, NM 88203	OR
The Lucinda Loveless Rev. Trust P.O. Box 8 Hondo, NM 88336	OR
Berrendo Assets, LLC P.O. Box 12454 Dallas, TX 75225	OR
Babe Development, LLC P.O. Box 758 Roswell, NM 88202-0758	OR
Joyco Investments, LLC P.O. Box 2104 Roswell, NM 88202-2104	OR
Sue Hanson McBride P.O. Box 3480 Roswell, NM 88202-3480	OR
Julie Scott McBride P.O. Box 3767 Roswell, NM 88202-3767	OR

Douglas L. McBride
P.O. Box 1515
Roswell, NM 88202-1515

OR

Chase Oil Corporation
P.O. Box 1767
Artesia, NM 88211

WI

Robert C. Chase
P.O. Box 297
Artesia, NM 88211

WI

Ventana Minerals LLC
P.O. Box 359
Artesia, NM 88211

WI

DiaKan Minerals LLC
P.O. Box 693
Artesia, NM 88211

WI



P.O. Box 960
Artesia, NM 88211-0960
Office (575) 748-1288
Fax (575) 746-9539

August 23, 2016

Commissioner of Public Lands
P.O. Box 1148
Santa Fe, NM 87504-1148

VIA CERTIFIED MAIL 7015 0640 0006 7031 3892
CERTIFIED RETURN RECEIPT MAIL

Dear Sir:

This letter will serve as a notice that Mack Energy Corporation has requested administrative approval from the NMOCD to Down Hole Commingle production from the Blinbry and Drinkard on the Norway State #2 located in Sec. 36 T21S R36E, 1700 FSL & 2043 FEL, Lea County, New Mexico.

Should you have any objection, it must be filed in writing within twenty (20) days from the date of this notice. The Division Director may approve the DHC application if no objection has been made within the 20 days after the application has been received.

Sincerely,

Deana Weaver
Production Clerk
dweaver@mec.com

DW/

Enclosures



P.O. Box 960
Artesia, NM 88211-0960
Office (575) 748-1288
Fax (575) 746-9539

August 23, 2016

McBride Oil and Gas Corporation
P.O. Box 1515
Roswell, NM 88202

VIA CERTIFIED MAIL 7015 0640 0006 7031 3908
CERTIFIED RETURN RECEIPT MAIL

Dear Sir:

This letter will serve as a notice that Mack Energy Corporation has requested administrative approval from the NMOCD to Down Hole Commingle production from the Blinebry and Drinkard on the Norway State #2 located in Sec. 36 T21S R36E, 1700 FSL & 2043 FEL, Lea County, New Mexico.

Should you have any objection, it must be filed in writing within twenty (20) days from the date of this notice. The Division Director may approve the DHC application if no objection has been made within the 20 days after the application has been received.

Sincerely,

A handwritten signature in blue ink that reads "Deana Weaver".

Deana Weaver
Production Clerk
dweaver@mec.com

DW/

Enclosures



P.O. Box 960
Artesia, NM 88211-0960
Office (575) 748-1288
Fax (575) 746-9539

August 23, 2016

Breckenridge Partnership
P.O. Box 1973
Roswell, NM 88202-1973

VIA CERTIFIED MAIL 7015 0640 0006 7031 3915
CERTIFIED RETURN RECEIPT MAIL

Dear Sir:

This letter will serve as a notice that Mack Energy Corporation has requested administrative approval from the NMOCD to Down Hole Commingle production from the Blinebry and Drinkard on the Norway State #2 located in Sec. 36 T21S R36E, 1700 FSL & 2043 FEL, Lea County, New Mexico.

Should you have any objection, it must be filed in writing within twenty (20) days from the date of this notice. The Division Director may approve the DHC application if no objection has been made within the 20 days after the application has been received.

Sincerely,

A handwritten signature in cursive script that reads "Deana Weaver".

Deana Weaver
Production Clerk
dweaver@mec.com

DW/

Enclosures



P.O. Box 960
Artesia, NM 88211-0960
Office (575) 748-1288
Fax (575) 746-9539

August 23, 2016

David Petroleum Corporation
116 W. First Street
Roswell, NM 88203

VIA CERTIFIED MAIL 7015 0640 0006 7031 3922
CERTIFIED RETURN RECEIPT MAIL

Dear Sir:

This letter will serve as a notice that Mack Energy Corporation has requested administrative approval from the NMOCD to Down Hole Commingle production from the Blinebry and Drinkard on the Norway State #2 located in Sec. 36 T21S R36E, 1700 FSL & 2043 FEL, Lea County, New Mexico.

Should you have any objection, it must be filed in writing within twenty (20) days from the date of this notice. The Division Director may approve the DHC application if no objection has been made within the 20 days after the application has been received.

Sincerely,

A handwritten signature in blue ink that reads "Deana Weaver".

Deana Weaver
Production Clerk
dweaver@mec.com

DW/

Enclosures



P.O. Box 960
Artesia, NM 88211-0960
Office (575) 748-1288
Fax (575) 746-9539

August 23, 2016

The Lucinda Loveless Rev. Trust
P.O. Box 8
Hondo, NM 88336

VIA CERTIFIED MAIL 7015 0640 0006 7031 3939
CERTIFIED RETURN RECEIPT MAIL

Dear Sir:

This letter will serve as a notice that Mack Energy Corporation has requested administrative approval from the NMOCD to Down Hole Commingle production from the Blinbry and Drinkard on the Norway State #2 located in Sec. 36 T21S R36E, 1700 FSL & 2043 FEL, Lea County, New Mexico.

Should you have any objection, it must be filed in writing within twenty (20) days from the date of this notice. The Division Director may approve the DHC application if no objection has been made within the 20 days after the application has been received.

Sincerely,

Deana Weaver
Production Clerk
dweaver@mec.com

DW/

Enclosures



P.O. Box 960
Artesia, NM 88211-0960
Office (575) 748-1288
Fax (575) 746-9539

August 23, 2016

Berrendo Assets, LLC
P.O. Box 12454
Dallas, TX 75225

VIA CERTIFIED MAIL 7015 0640 0006 7031 3946
CERTIFIED RETURN RECEIPT MAIL

Dear Sir:

This letter will serve as a notice that Mack Energy Corporation has requested administrative approval from the NMOCD to Down Hole Commingle production from the Blinbry and Drinkard on the Norway State #2 located in Sec. 36 T21S R36E, 1700 FSL & 2043 FEL, Lea County, New Mexico.

Should you have any objection, it must be filed in writing within twenty (20) days from the date of this notice. The Division Director may approve the DHC application if no objection has been made within the 20 days after the application has been received.

Sincerely,

A handwritten signature in blue ink that reads "Deana Weaver".

Deana Weaver
Production Clerk
dweaver@mec.com

DW/

Enclosures



P.O. Box 960
Artesia, NM 88211-0960
Office (575) 748-1288
Fax (575) 746-9539

August 23, 2016

Babe Development, LLC
P.O. Box 758
Roswell, NM 88202-0758

VIA CERTIFIED MAIL 7015 0640 0006 7031 3953
CERTIFIED RETURN RECEIPT MAIL

Dear Sir:

This letter will serve as a notice that Mack Energy Corporation has requested administrative approval from the NMOCD to Down Hole Commingle production from the Blinebry and Drinkard on the Norway State #2 located in Sec. 36 T21S R36E, 1700 FSL & 2043 FEL, Lea County, New Mexico.

Should you have any objection, it must be filed in writing within twenty (20) days from the date of this notice. The Division Director may approve the DHC application if no objection has been made within the 20 days after the application has been received.

Sincerely,

Deana Weaver
Production Clerk
dweaver@mec.com

DW/

Enclosures



P.O. Box 960
Artesia, NM 88211-0960
Office (575) 748-1288
Fax (575) 746-9539

August 23, 2016

Joyco Investments, LLC
P.O. Box 2104
Roswell, NM 88202-3480

VIA CERTIFIED MAIL 7015 0640 0006 7031 3960
CERTIFIED RETURN RECEIPT MAIL

Dear Sir:

This letter will serve as a notice that Mack Energy Corporation has requested administrative approval from the NMOCD to Down Hole Commingle production from the Blinebry and Drinkard on the Norway State #2 located in Sec. 36 T21S R36E, 1700 FSL & 2043 FEL, Lea County, New Mexico.

Should you have any objection, it must be filed in writing within twenty (20) days from the date of this notice. The Division Director may approve the DHC application if no objection has been made within the 20 days after the application has been received.

Sincerely,

A handwritten signature in blue ink that reads "Deana Weaver".

Deana Weaver
Production Clerk
dweaver@mec.com

DW/

Enclosures



P.O. Box 960
Artesia, NM 88211-0960
Office (575) 748-1288
Fax (575) 746-9539

August 23, 2016

Sue Hanson McBride
P.O. Box 3480
Roswell, NM 88202-3480

VIA CERTIFIED MAIL 7015 0640 0006 7031 3977
CERTIFIED RETURN RECEIPT MAIL

Dear Sir:

This letter will serve as a notice that Mack Energy Corporation has requested administrative approval from the NMOCD to Down Hole Commingle production from the Blinebry and Drinkard on the Norway State #2 located in Sec. 36 T21S R36E, 1700 FSL & 2043 FEL, Lea County, New Mexico.

Should you have any objection, it must be filed in writing within twenty (20) days from the date of this notice. The Division Director may approve the DHC application if no objection has been made within the 20 days after the application has been received.

Sincerely,

Deana Weaver
Production Clerk
dweaver@mec.com

DW/

Enclosures



P.O. Box 960
Artesia, NM 88211-0960
Office (575) 748-1288
Fax (575) 746-9539

August 23, 2016

Julie Scott McBride
P.O. Box 3767
Roswell, NM 88202-3767

VIA CERTIFIED MAIL 7015 0640 0006 7031 3984
CERTIFIED RETURN RECEIPT MAIL

Dear Sir:

This letter will serve as a notice that Mack Energy Corporation has requested administrative approval from the NMOCD to Down Hole Commingle production from the Blinebry and Drinkard on the Norway State #2 located in Sec. 36 T21S R36E, 1700 FSL & 2043 FEL, Lea County, New Mexico.

Should you have any objection, it must be filed in writing within twenty (20) days from the date of this notice. The Division Director may approve the DHC application if no objection has been made within the 20 days after the application has been received.

Sincerely,

Deana Weaver
Production Clerk
dweaver@mec.com

DW/

Enclosures



P.O. Box 960
Artesia, NM 88211-0960
Office (575) 748-1288
Fax (575) 746-9539

August 23, 2016

Douglas L. McBride
P.O. Box 1515
Roswell, NM 88202-1515

VIA CERTIFIED MAIL 7015 0640 0006 7031 3991
CERTIFIED RETURN RECEIPT MAIL

Dear Sir:

This letter will serve as a notice that Mack Energy Corporation has requested administrative approval from the NMOCD to Down Hole Commingle production from the Blinebry and Drinkard on the Norway State #2 located in Sec. 36 T21S R36E, 1700 FSL & 2043 FEL, Lea County, New Mexico.

Should you have any objection, it must be filed in writing within twenty (20) days from the date of this notice. The Division Director may approve the DHC application if no objection has been made within the 20 days after the application has been received.

Sincerely,

Deana Weaver
Production Clerk
dweaver@mec.com

DW/

Enclosures