

District I  
1625 N. French Dr., Hobbs, NM 88240  
Phone: (575) 393-6161 Fax: (575) 393-0720  
District II  
811 S. First St., Artesia, NM 88210  
Phone: (575) 748-1283 Fax: (575) 748-9720  
District III  
1000 Rio Brazos Road, Aztec, NM 87410  
Phone: (505) 334-6178 Fax: (505) 334-6170  
District IV  
1220 S. St. Francis Dr., Santa Fe, NM 87505  
Phone: (505) 476-3460 Fax: (505) 476-3462

State of New Mexico  
Energy, Minerals & Natural Resources Department  
**OIL CONSERVATION DIVISION**  
1220 South St. Francis Dr.  
Santa Fe, NM 87505

Form C-102  
Revised August 1, 2011  
Submit one copy to appropriate  
District Office

☐ AMENDED REPORT

**WELL LOCATION AND ACREAGE DEDICATION PLAT**

<sup>1</sup> API Number 30-025 - <b>43407</b>		<sup>2</sup> Pool Code 43329	<sup>3</sup> Pool Name Maljamar; Grayburg, San Andres
<sup>4</sup> Property Code <b>31422</b>	<sup>5</sup> Property Name MCA UNIT		<sup>6</sup> Well Number 534
<sup>7</sup> OGRID No. 217817	<sup>8</sup> Operator Name ConocoPhillips Company		<sup>9</sup> Elevation 3971.7'

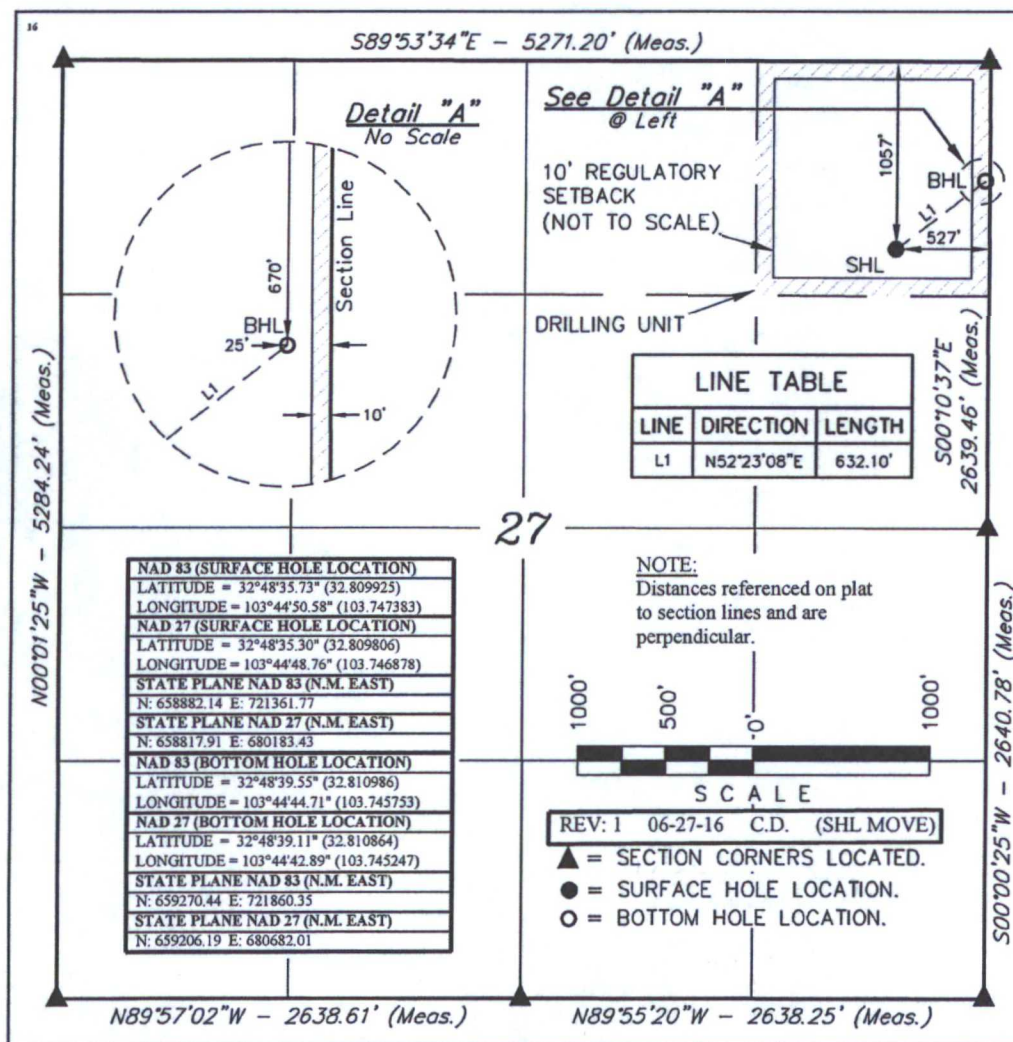
**"Surface Location**

UL or lot no.	Section	Township	Range	Lot Idn	Feet from the	North/South line	Feet from the	East/West line	County
A	27	17 S	32 E		1057	NORTH	527	EAST	LEA

**"Bottom Hole Location If Different From Surface**

UL or lot no.	Section	Township	Range	Lot Idn	Feet from the	North/South line	Feet from the	East/West line	County
A	27	17 S	32 E		670	NORTH	25	EAST	LEA
<sup>12</sup> Dedicated Acres 40	<sup>13</sup> Joint or Infill	<sup>14</sup> Consolidation Code	<sup>15</sup> Order No.						

No allowable will be assigned to this completion until all interests have been consolidated or a non-standard unit has been approved by the division.



**"OPERATOR CERTIFICATION**

I hereby certify that the information contained herein is true and complete to the best of my knowledge and belief, and that this organization either owns a working interest or unleased mineral interest in the land including the proposed bottom hole location or has a right to drill this well at this location pursuant to a contract with an owner of such a mineral or working interest, or to a voluntary pooling agreement or a compulsory pooling order heretofore entered by the division.

*Susan B. Maunder* 8/2/16  
Signature Date

Susan B. Maunder

Printed Name

Susan.B.Maunder@cop.com

E-mail Address

**"SURVEYOR CERTIFICATION**

I hereby certify that the well location shown on this plat was plotted from field notes of actual surveys made by me or under my supervision, and that the same is true and correct to the best of my belief.

June 23, 2016

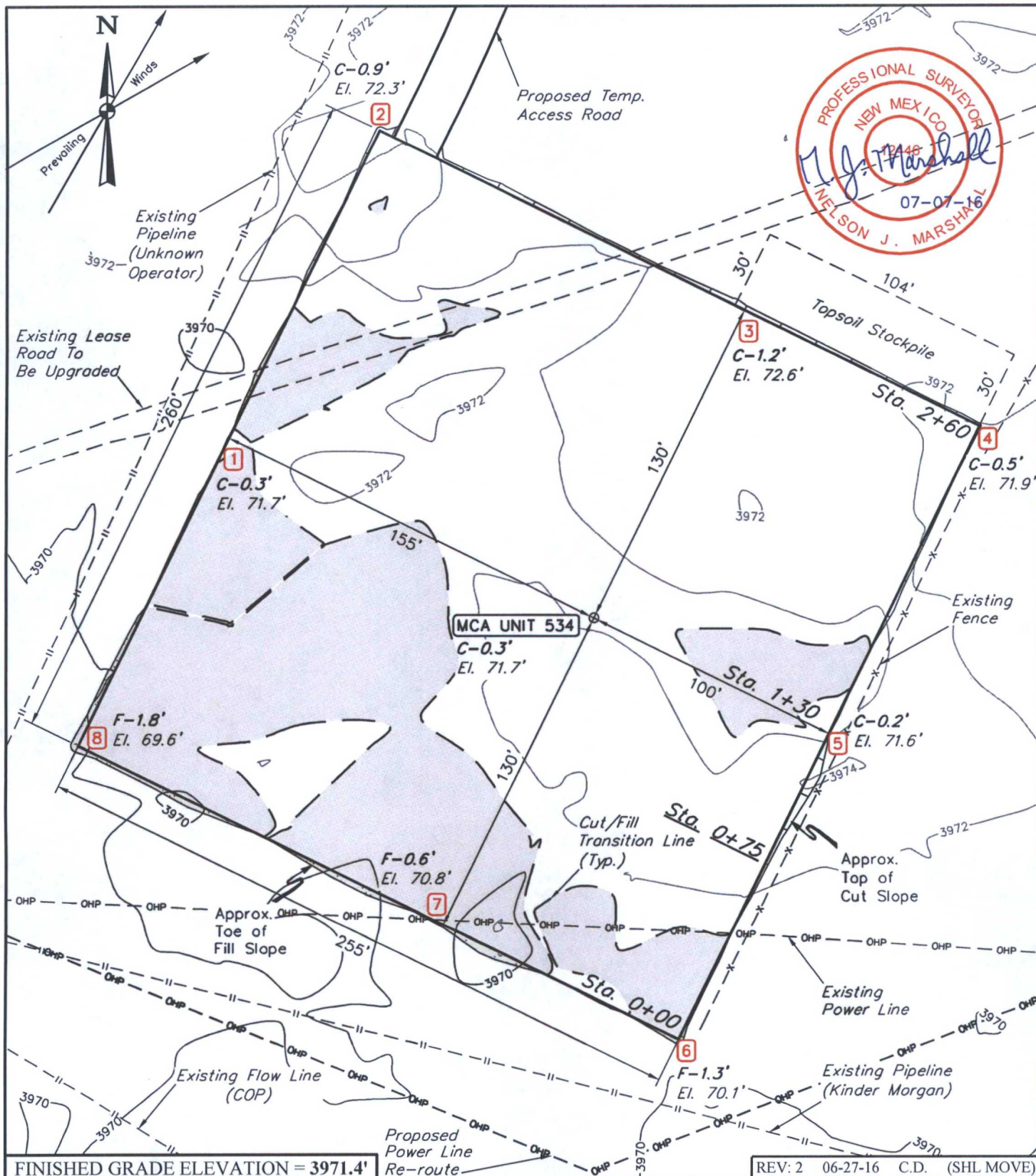
Date of Survey

Signature and Seal of Professional Surveyor:



Certificate Number:





FINISHED GRADE ELEVATION = 3971.4'

REV: 2 06-27-16 C.D. (SHL MOVE)

**NOTES:**

- Contours shown at 2' intervals.
- Underground utilities shown on this sheet are for visualization purposes only, actual locations to be determined prior to construction.

**ConocoPhillips Company**

**MCA UNIT 534**  
**1057' FNL 527' FEL**  
**NE 1/4 NE 1/4, SECTION 27, T17S, R32E, N.M.P.M.**  
**LEA COUNTY, NEW MEXICO**

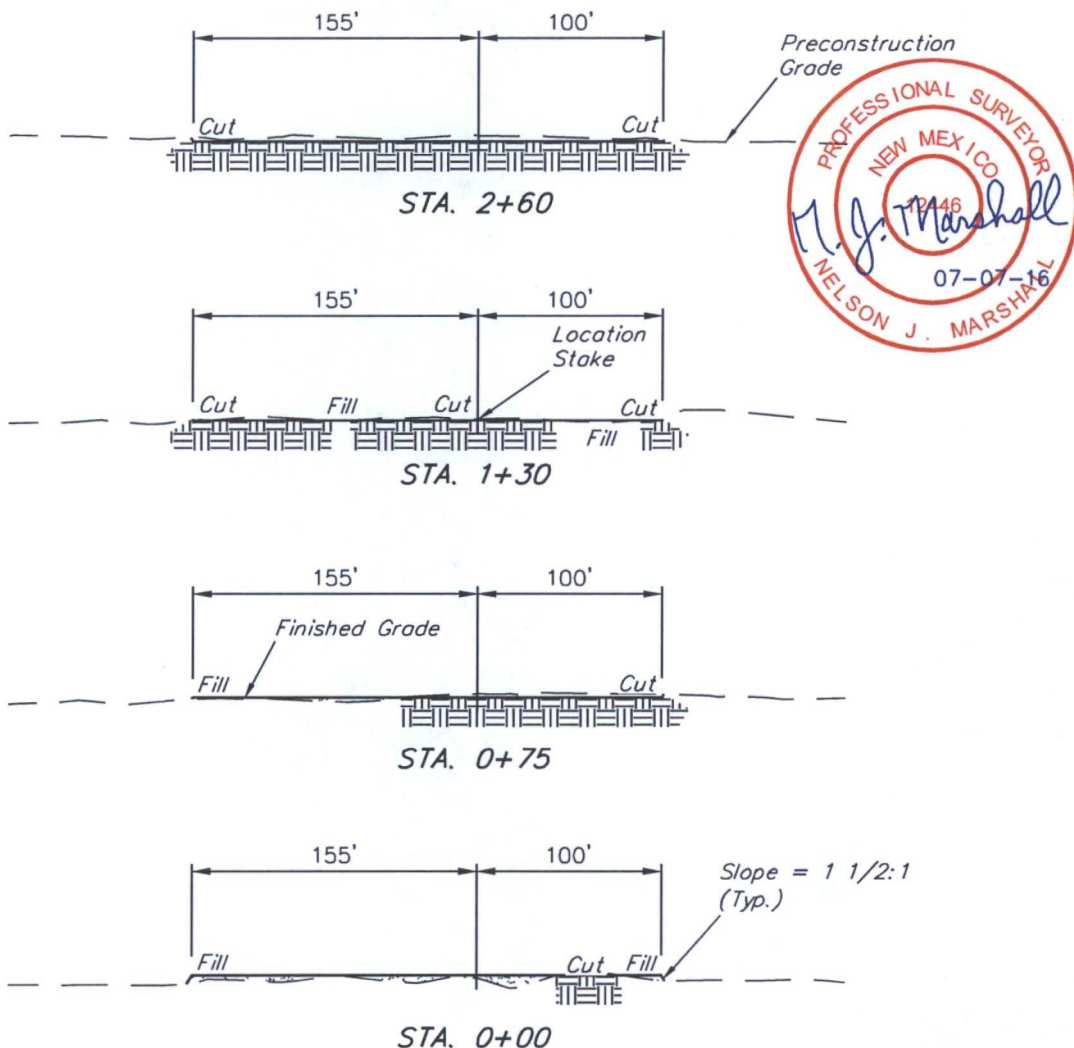
SURVEYED BY	J.A.V., A.H.	06-23-16	SCALE
DRAWN BY	A.D.	08-29-13	1" = 50'
LOCATION LAYOUT		FIGURE #1	



**UELS, LLC**  
 Corporate Office \* 85 South 200 East  
 Vernal, UT 84078 \* (435) 789-1017



1" = 40'  
X-Section  
Scale  
1" = 100'



APPROXIMATE EARTHWORK QUANTITIES		APPROXIMATE SURFACE DISTURBANCE AREAS		
(3") TOPSOIL STRIPPING	630 Cu. Yds.		DISTANCE	ACRES
REMAINING LOCATION	705 Cu. Yds.	WELL SITE DISTURBANCE	NA	±1.619
<b>TOTAL CUT</b>	<b>1,335 Cu. Yds.</b>	30' WIDE ACCESS ROAD R-O-W DISTURBANCE	±204.34'	±0.141
<b>FILL</b>	<b>705 Cu. Yds.</b>	10' WIDE FLOW LINE R-O-W DISTURBANCE	±110.02'	±0.025
EXCESS MATERIAL	630 Cu. Yds.	10' WIDE POWER LINE RE-ROUTE R-O-W DISTURBANCE	±507.58'	±0.117
TOPSOIL	630 Cu. Yds.	10' WIDE POWER LINE R-O-W DISTURBANCE	±5164.54'	±1.186
<b>EXCESS UNBALANCE</b> (After Interim Rehabilitation)	<b>0 Cu. Yds.</b>	<b>TOTAL SURFACE USE AREA</b>		<b>±3.088</b>

REV: 2 06-27-16 C.D. (SHL MOVE)

**NOTES:**

- Fill quantity includes 5% for compaction.

**ConocoPhillips Company**

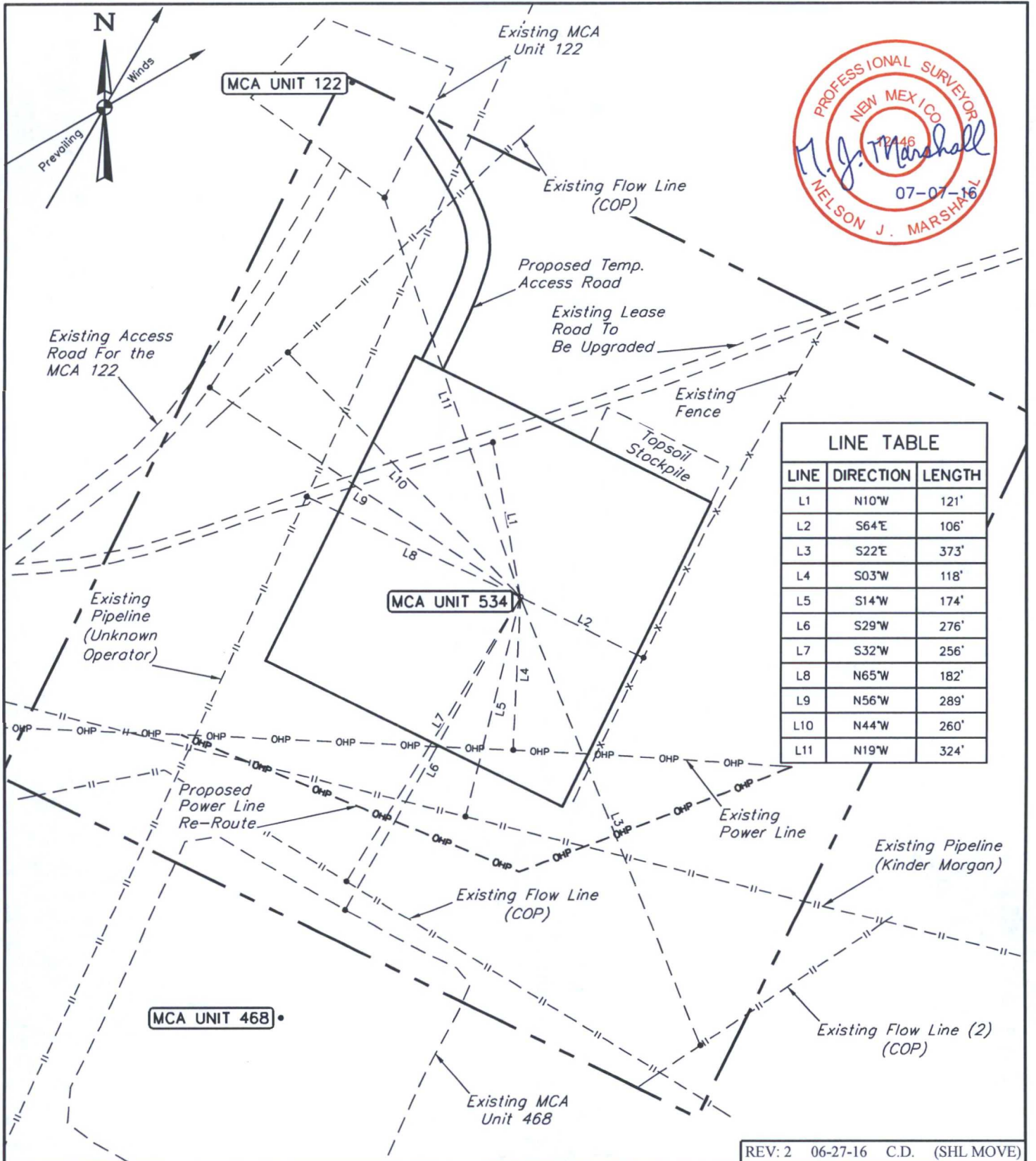
MCA UNIT 534  
1057' FNL 527' FEL  
NE 1/4 NE 1/4, SECTION 27, T17S, R32E, N.M.P.M.  
LEA COUNTY, NEW MEXICO



UELS, LLC  
Corporate Office \* 85 South 200 East  
Vernal, UT 84078 \* (435) 789-1017

SURVEYED BY	J.A.V., A.H.	06-23-16	SCALE
DRAWN BY	A.D.	08-29-13	AS SHOWN
TYPICAL CROSS SECTIONS		FIGURE #2	





REV: 2 06-27-16 C.D. (SHL MOVE)

### ConocoPhillips Company

**MCA UNIT 534**  
 1057' FNL 527' FEL  
 NE 1/4 NE 1/4, SECTION 27, T17S, R32E, N.M.P.M.  
 LEA COUNTY, NEW MEXICO

SURVEYED BY	J.A.V., A.H.	06-23-16	SCALE
DRAWN BY	A.D.	08-29-13	1" = 50'
ARCHAEOLOGICAL SURVEY BOUNDARY			FIGURE #5



**UELS, LLC**  
 Corporate Office \* 85 South 200 East  
 Vernal, UT 84078 \* (435) 789-1017



PROCEED IN A SOUTHERLY DIRECTION FROM MALJAMAR, NEW MEXICO ALONG MALJAMAR ROAD APPROXIMATELY 3.0 MILES TO THE JUNCTION OF THIS ROAD AND AN EXISTING ROAD TO THE EAST; TURN LEFT AND PROCEED IN A EASTERLY DIRECTION APPROXIMATELY 0.7 MILES TO THE JUNCTION OF THIS ROAD AND THE EXISTING ROAD TO THE SOUTH; TURN RIGHT AND PROCEED IN A SOUTHWESTERLY DIRECTION APPROXIMATELY 0.1 MILES TO THE JUNCTION OF THIS ROAD AND AN EXISTING ROAD TO THE EAST; TURN LEFT AND PROCEED IN A EASTERLY, THEN NORTHEASTERLY DIRECTION APPROXIMATELY 0.1 MILES TO TO THE PROPOSED LOCATION.

TOTAL DISTANCE FROM MALJAMAR, NEW MEXICO TO THE PROPOSED WELL LOCATION IS APPROXIMATELY 3.9 MILES.

REV: 1 06-27-16 C.D. (SHL MOVE)

**ConocoPhillips Company**

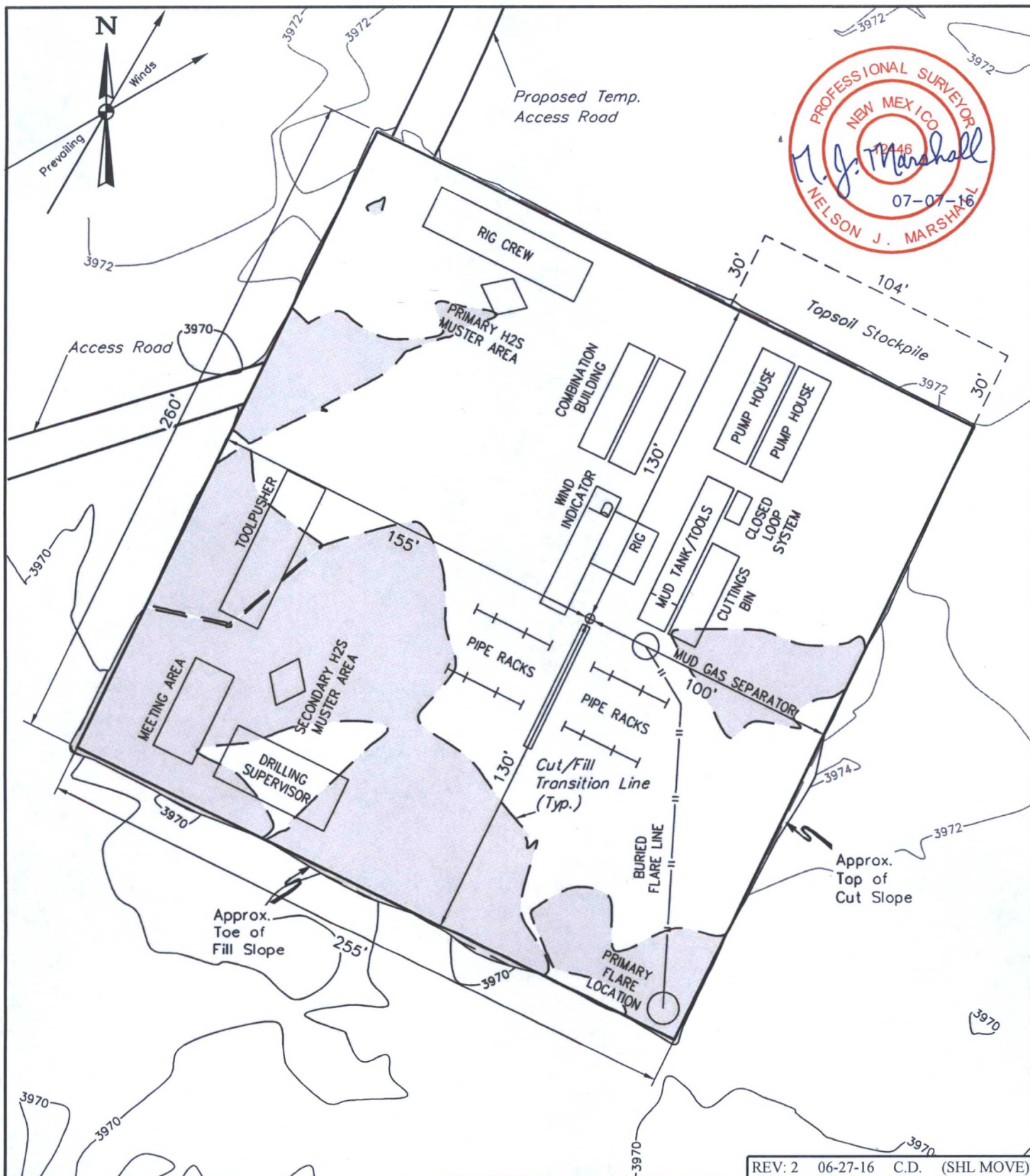
MCA UNIT 534  
1057' FNL 527' FEL  
NE 1/4 NE 1/4, SECTION 27, T17S, R32E, N.M.P.M.  
LEA COUNTY, NEW MEXICO

SURVEYED BY	J.A.V., A.H.	06-23-16	
DRAWN BY	A.D.	08-29-13	
ROAD DESCRIPTION			



UELS, LLC  
Corporate Office \* 85 South 200 East  
Vernal, UT 84078 \* (435) 789-1017





REV: 2 06-27-16 C.D. (SHL MOVE)

#### NOTES:

- Contours shown at 2' intervals.
- May have different number of Pump Houses and Combination Buildings.

#### ConocoPhillips Company

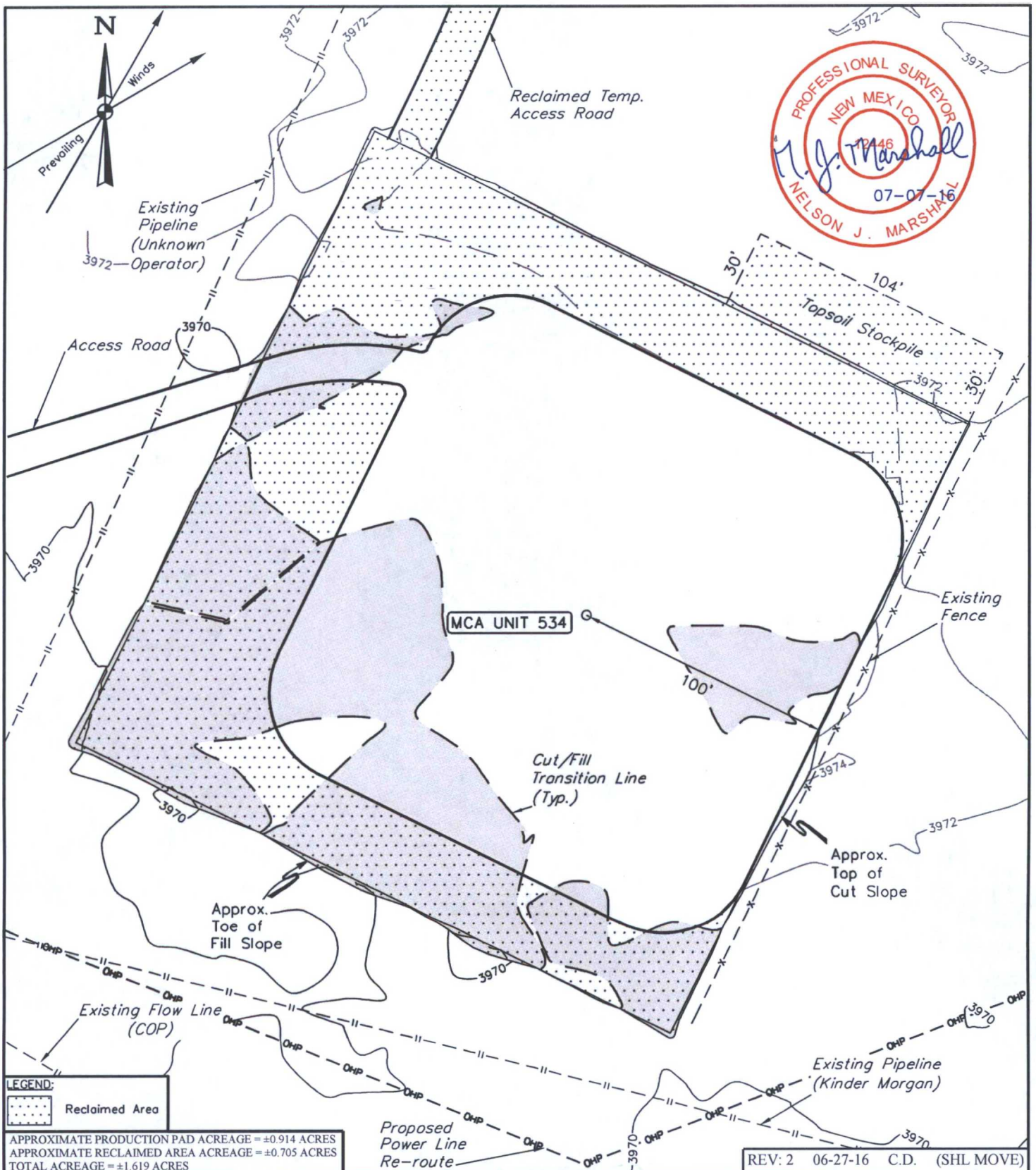
**MCA UNIT 534**  
**1057' FNL 527' FEL**  
**NE 1/4 NE 1/4, SECTION 27, T17S, R32E, N.M.P.M.**  
**LEA COUNTY, NEW MEXICO**

SURVEYED BY	J.A.V., A.H.	06-23-16	SCALE
DRAWN BY	A.D.	08-29-13	1" = 50'
TYPICAL RIG LAYOUT		FIGURE #3	



**UELS, LLC**  
 Corporate Office \* 85 South 200 East  
 Vernal, UT 84078 \* (435) 789-1017





**UELS, LLC**  
Corporate Office \* 85 South 200 East  
Vernal, UT 84078 \* (435) 789-1017

**ConocoPhillips Company**

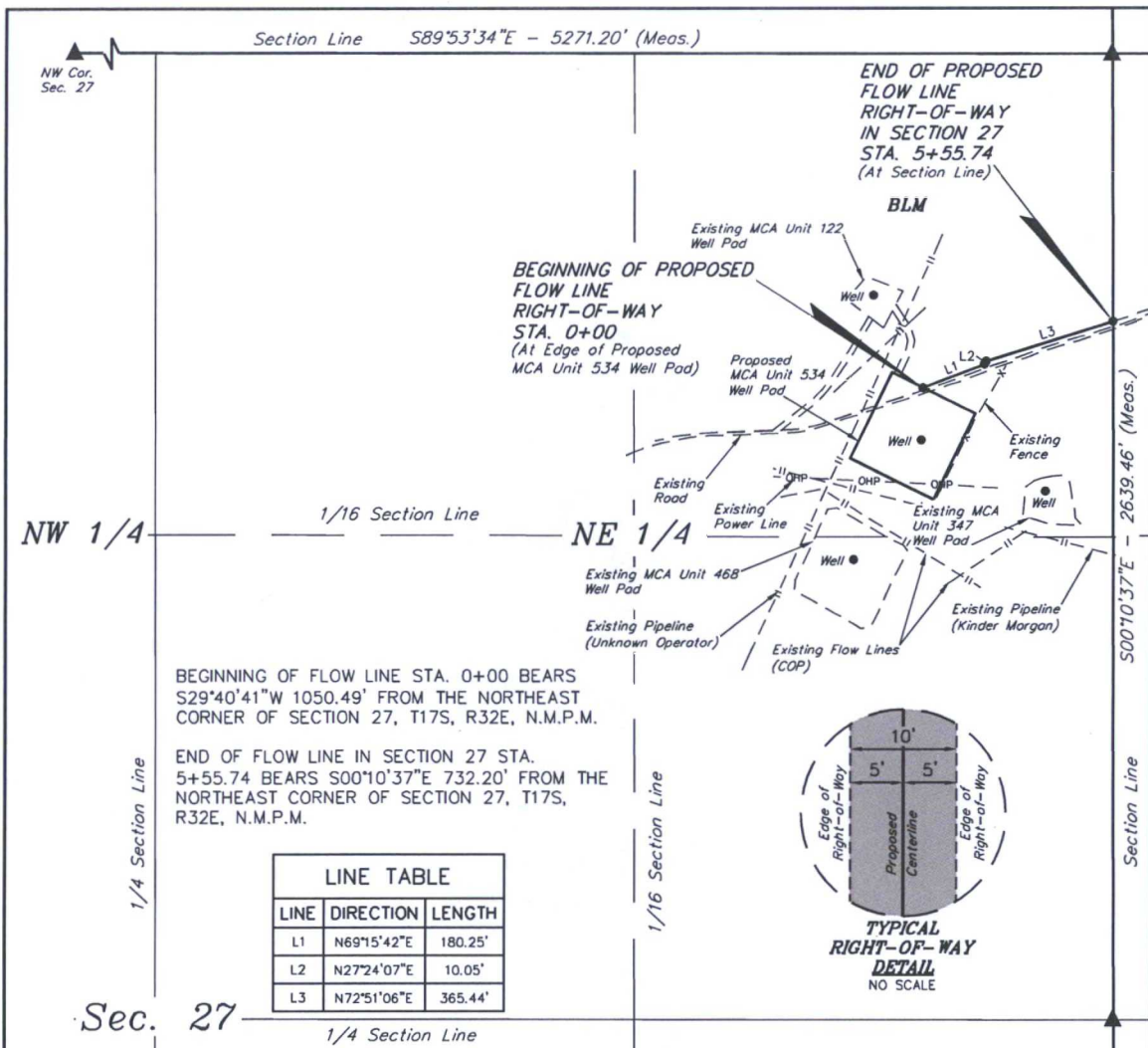
**MCA UNIT 534**  
**1057' FNL 527' FEL**  
**NE 1/4 NE 1/4, SECTION 27, T17S, R32E, N.M.P.M.**  
**LEA COUNTY, NEW MEXICO**

SURVEYED BY	J.A.V., A.H.	06-23-16	SCALE
DRAWN BY	A.D.	08-29-13	1" = 50'
RECLAMATION DIAGRAM		FIGURE #4	









### FLOW LINE RIGHT-OF-WAY DESCRIPTION IN SECTION 27

A 10' WIDE RIGHT-OF-WAY 5' ON EACH SIDE OF THE FOLLOWING DESCRIBED CENTERLINE.

BEGINNING AT A POINT IN THE NE 1/4 NE 1/4 OF SECTION 27, T17S, R32E, N.M.P.M., WHICH BEARS S29°40'41"W 1050.49' FROM THE NORTHEAST CORNER OF SAID SECTION 27, THENCE N69°15'42"E 180.25'; THENCE N27°24'07"E 10.05'; THENCE N72°51'06"E 365.44' TO A POINT ON THE EAST LINE OF THE NE 1/4 NE 1/4 OF SAID SECTION 27, WHICH BEARS S00°10'37"E 732.20' FROM THE NORTHEAST CORNER OF SAID SECTION 27. THE SIDE LINES OF SAID DESCRIBED RIGHT-OF-WAY BEING SHORTENED OR ELONGATED TO MEET THE GRANTOR'S PROPERTY LINES. BASIS OF BEARINGS IS A G.P.S. OBSERVATION. CONTAINS 0.128 ACRES MORE OR LESS.



#### ACREAGE / LENGTH TABLE

	OWNERSHIP	FEET	RODS	ACRES
SEC. 27 NE 1/4	BLM	555.74	33.68	0.128

▲ = SECTION CORNERS LOCATED.

NOTES:  
• Basis of bearing is a G.P.S. observation (Vertical Control Datum: NAVD88)

CERTIFICATE  
THIS IS TO CERTIFY THAT THE ABOVE PLAT WAS PREPARED FROM FIELD NOTES OF ACTUAL SURVEYS MADE BY ME OR UNDER MY SUPERVISION AND THAT THE SAME ARE TRUE AND CORRECT TO THE BEST OF MY KNOWLEDGE AND BELIEF.

REGISTERED LAND SURVEYOR  
REGISTRATION NO. 12446  
STATE OF NEW MEXICO  
07-07-16

REV: 2 06-27-16 C.D. (FLOW LINE RE-ROUTE)

ConocoPhillips Company

MCA UNIT 534  
SECTION 27, T17S, R32E, N.M.P.M.  
LEA COUNTY, NEW MEXICO

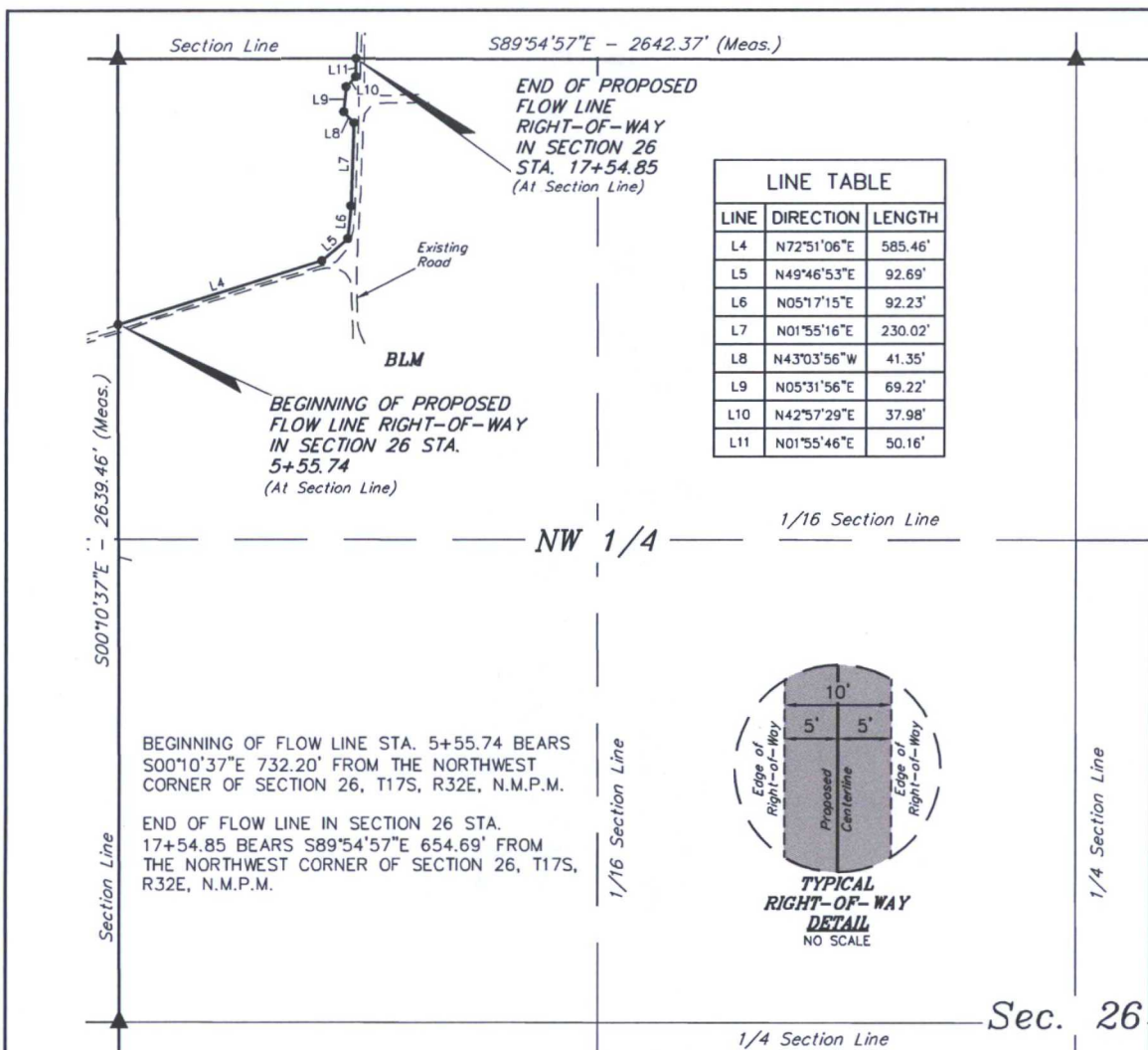
SURVEYED BY	J.A.V., A.H.	06-23-16	SCALE
DRAWN BY	A.D.	08-29-16	1" = 400'

FLOW LINE R-O-W



UELS, LLC  
Corporate Office \* 85 South 200 East  
Vernal, UT 84078 \* (435) 789-1017





### FLOW LINE RIGHT-OF-WAY DESCRIPTION IN SECTION 26

A 10' WIDE RIGHT-OF-WAY 5' ON EACH SIDE OF THE FOLLOWING DESCRIBED CENTERLINE.

BEGINNING AT A POINT ON THE WEST LINE OF THE NW 1/4 NW 1/4 OF SECTION 26, T17S, R32E, N.M.P.M., WHICH BEARS S00°10'37"E 732.20' FROM THE NORTHWEST CORNER OF SAID SECTION 26, THENCE N72°51'06"E 585.46'; THENCE N49°46'53"E 92.69'; THENCE N05°17'15"E 92.23'; THENCE N01°55'16"E 230.02'; THENCE N43°03'56"W 41.35'; THENCE N05°31'56"E 69.22'; THENCE N42°57'29"E 37.98'; THENCE N01°55'46"E 50.16' TO A POINT ON THE NORTH LINE OF THE NW 1/4 NW 1/4 OF SAID SECTION 26, WHICH BEARS S89°54'57"E 654.69' FROM THE NORTHWEST CORNER OF SAID SECTION 26. THE SIDE LINES OF SAID DESCRIBED RIGHT-OF-WAY BEING SHORTENED OR ELONGATED TO MEET THE GRANTOR'S PROPERTY LINES. BASIS OF BEARINGS IS A G.P.S. OBSERVATION. CONTAINS 0.275 ACRES MORE OR LESS.



#### ACREAGE / LENGTH TABLE

	OWNERSHIP	FEET	RODS	ACRES
SEC. 26 NW 1/4	BLM	1199.11	72.67	0.275

▲ = SECTION CORNERS LOCATED.

#### NOTES:

- Basis of bearing is a G.P.S. observation (Vertical Control Datum: NAVD88)

CERTIFICATE OF PROFESSIONAL SURVEYOR  
THIS IS TO CERTIFY THAT THE ABOVE PLAT WAS PREPARED FROM FIELD NOTES OF ACTUAL SURVEYS MADE BY ME OR UNDER MY SUPERVISION AND THAT THE SAME ARE TRUE AND CORRECT TO THE BEST OF MY KNOWLEDGE AND BELIEF.

REGISTERED LAND SURVEYOR  
REGISTRATION NO. 12446  
STATE OF NEW MEXICO  
07-07-16

REV: 2 06-27-16 C.D. (FLOW LINE RE-ROUTE)

ConocoPhillips Company

MCA UNIT 534  
SECTION 26, T17S, R32E, N.M.P.M.  
LEA COUNTY, NEW MEXICO

SURVEYED BY	J.A.V., A.H.	06-23-16	SCALE
DRAWN BY	A.D.	08-29-16	1" = 400'

FLOW LINE R-O-W



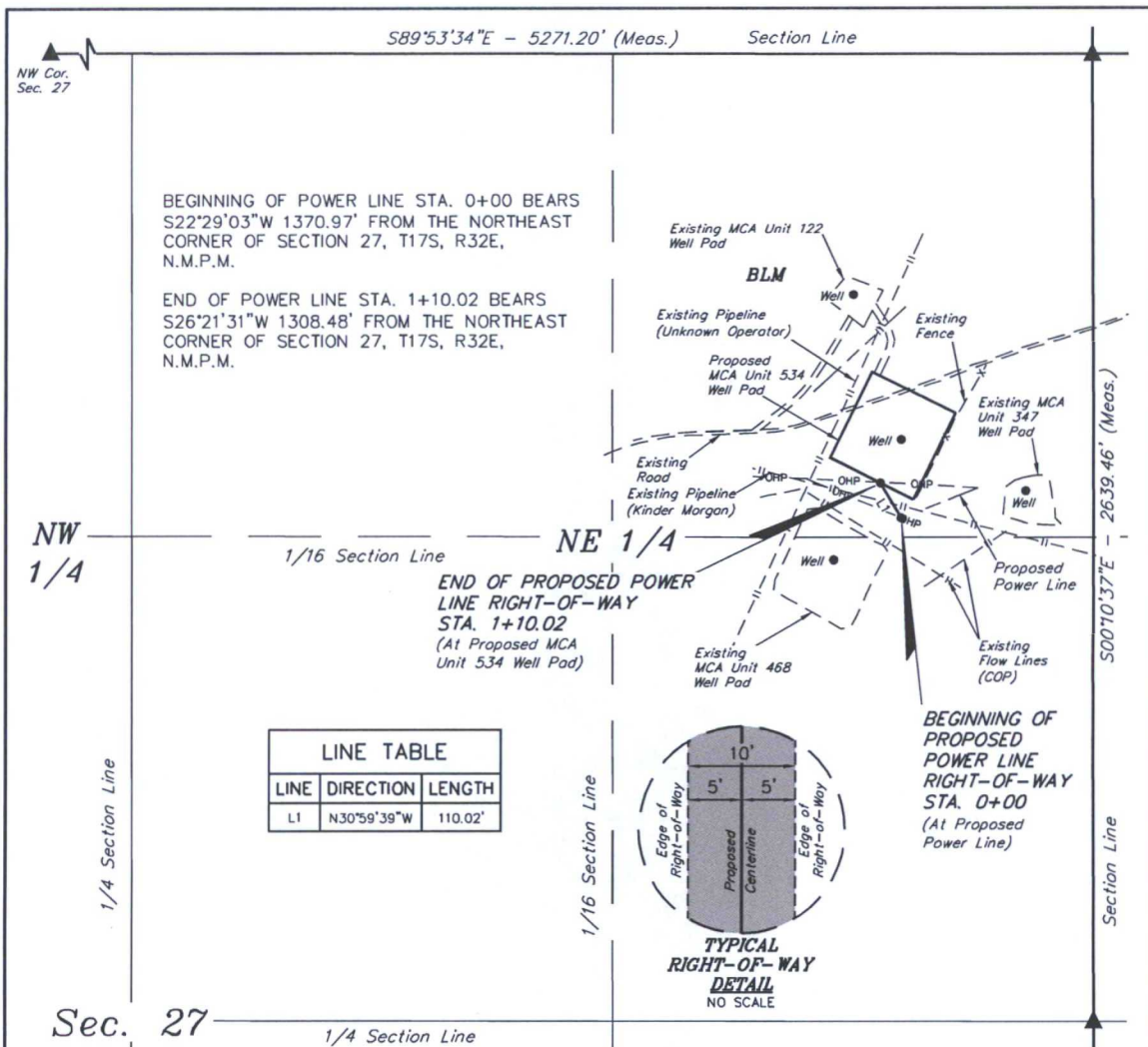
UELS, LLC  
Corporate Office \* 85 South 200 East  
Vernal, UT 84078 \* (435) 789-1017











### POWER LINE RIGHT-OF-WAY DESCRIPTION

A 10' WIDE RIGHT-OF-WAY 5' ON EACH SIDE OF THE FOLLOWING DESCRIBED CENTERLINE.

BEGINNING AT A POINT IN THE NE 1/4 NE 1/4 OF SECTION 27, T17S, R32E, N.M.P.M., WHICH BEARS S22°29'03"W 1370.97' FROM THE NORTHEAST CORNER OF SAID SECTION 27, THENCE N30°59'39"W 110.02' TO A POINT IN THE NE 1/4 NE 1/4 OF SAID SECTION 27, WHICH BEARS S26°21'31"W 1308.48' FROM THE NORTHEAST CORNER OF SAID SECTION 27. THE SIDE LINES OF SAID DESCRIBED RIGHT-OF-WAY BEING SHORTENED OR ELONGATED TO MEET THE GRANTOR'S PROPERTY LINES. BASIS OF BEARINGS IS A G.P.S. OBSERVATION. CONTAINS 0.025 ACRES MORE OR LESS.



#### ACREAGE / LENGTH TABLE

	OWNERSHIP	FEET	RODS	ACRES
SEC. 27 NE 1/4	BLM	110.02	6.67	0.025

▲ = SECTION CORNERS LOCATED.

#### NOTES:

- Basis of bearing is a G.P.S. observation (Vertical Control Datum: NAVD88)



UELS, LLC  
Corporate Office \* 85 South 200 East  
Vernal, UT 84078 \* (435) 789-1017



#### ConocoPhillips Company

MCA UNIT 534  
SECTION 27, T17S, R32E, N.M.P.M.  
LEA COUNTY, NEW MEXICO

SURVEYED BY	J.A.V., A.H.	06-23-16	SCALE
DRAWN BY	C.D.	06-27-16	1" = 400'

POWER LINE R-O-W

#### CERTIFICATE

THIS IS TO CERTIFY THAT THE ABOVE PLAT WAS PREPARED FROM FIELD NOTES OF ACTUAL SURVEYS MADE BY ME OR UNDER MY SUPERVISION AND THAT THE SAME ARE TRUE AND CORRECT TO THE BEST OF MY KNOWLEDGE AND BELIEF.

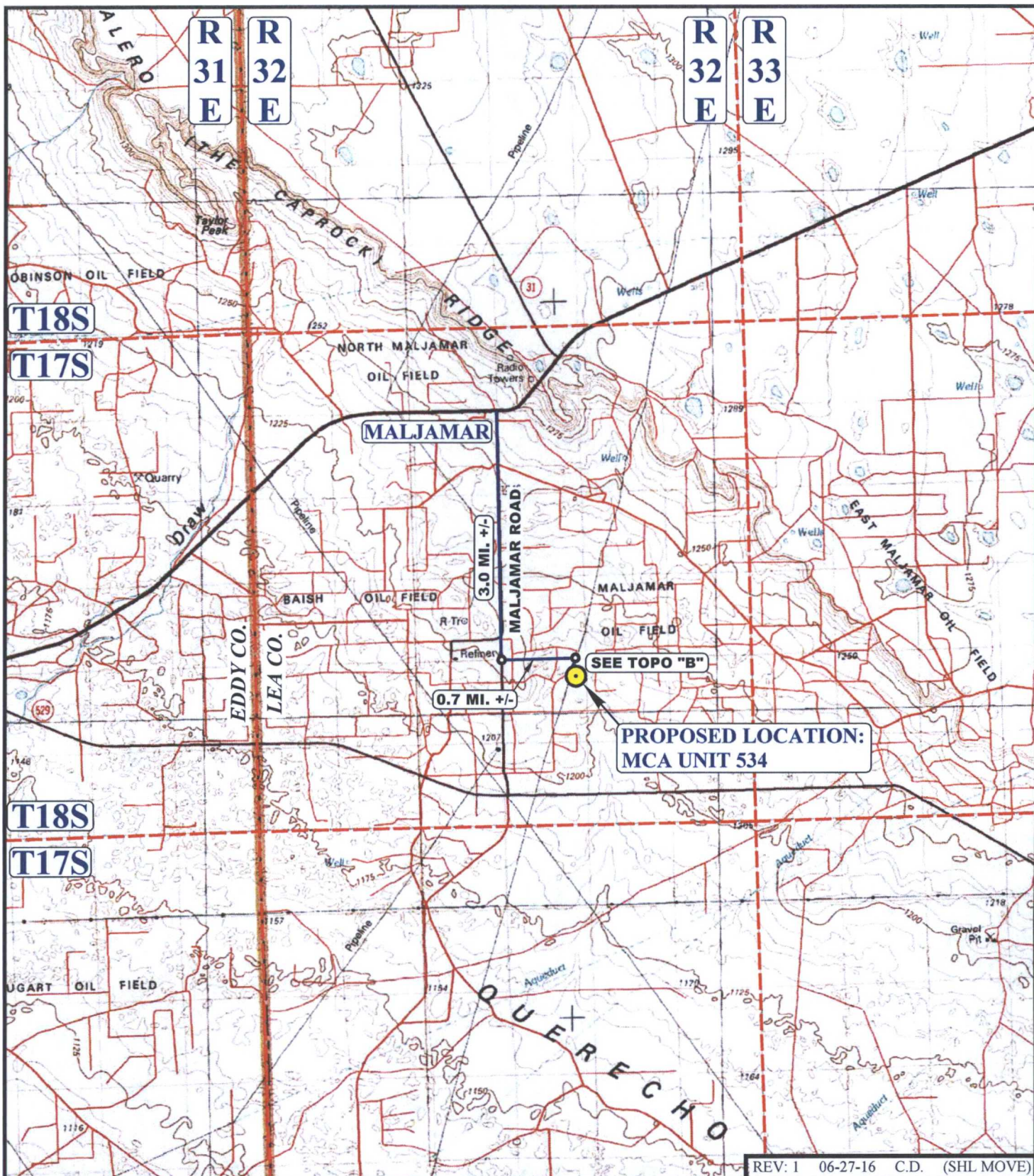
REGISTERED LAND SURVEYOR  
REGISTRATION NO. 12446  
STATE OF NEW MEXICO

07-07-16









REV: 1 06-27-16 C.D. (SHL MOVE)

**LEGEND:**

● PROPOSED LOCATION



**UELS, LLC**  
Corporate Office \* 85 South 200 East  
Vernal, UT 84078 \* (435) 789-1017

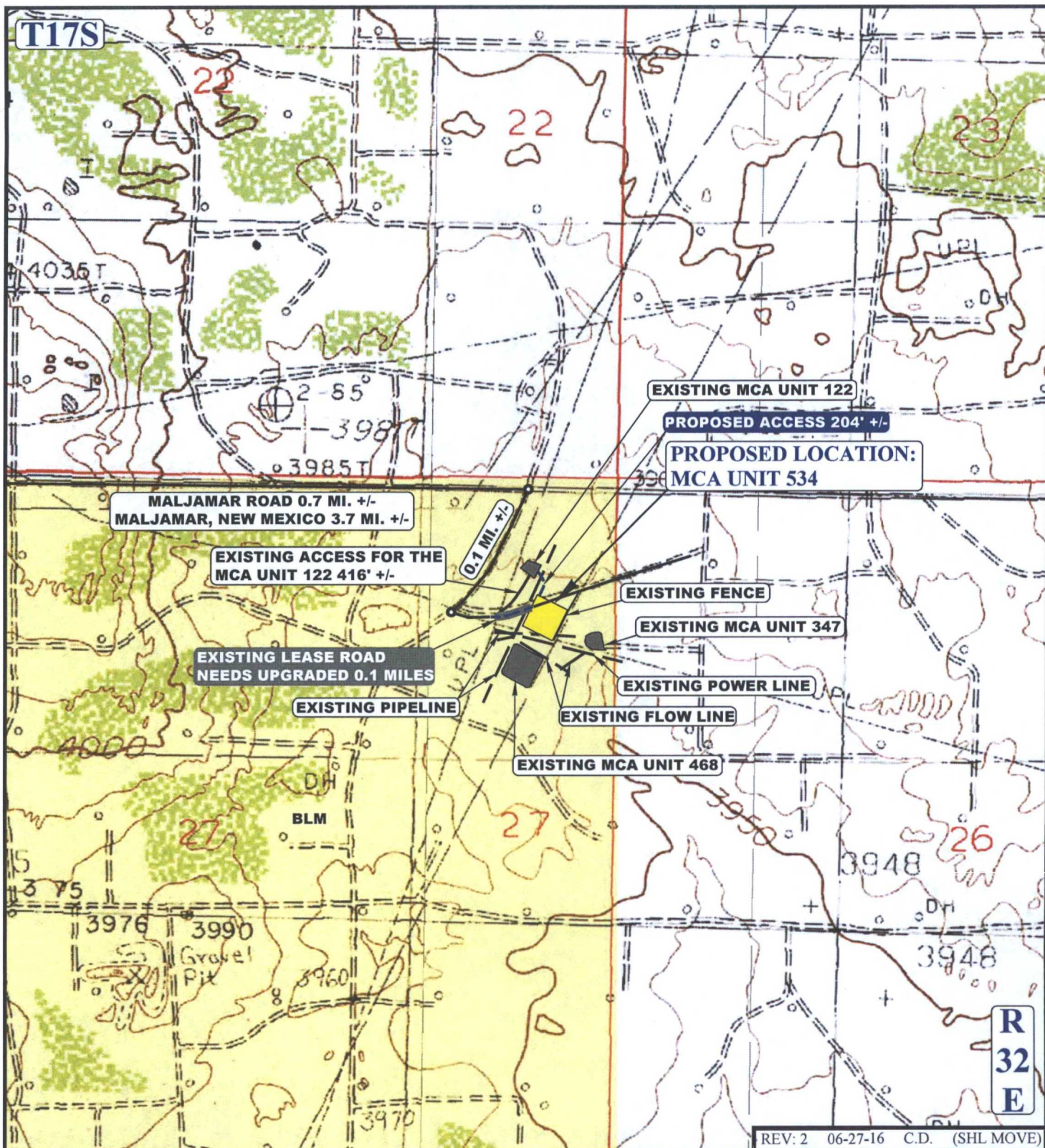


**ConocoPhillips Company**

**MCA UNIT 534**  
**1057' FNL 527' FEL**  
**NE 1/4 NE 1/4, SECTION 27, T17S, R32E, N.M.P.M.**  
**LEA COUNTY, NEW MEXICO**

SURVEYED BY	J.A.V., A.H.	06-23-16	SCALE
DRAWN BY	A.D.	08-29-13	1 : 100,000
ACCESS ROAD MAP			TOPO A





#### LEGEND:

	EXISTING ROAD
	PROPOSED ROAD
	EXISTING PIPELINE/FLOW LINE
	EXISTING FENCE
	EXISTING POWER LINE
	UPGRADED LEASE ROAD



**UELS, LLC**  
Corporate Office \* 85 South 200 East  
Vernal, UT 84078 \* (435) 789-1017

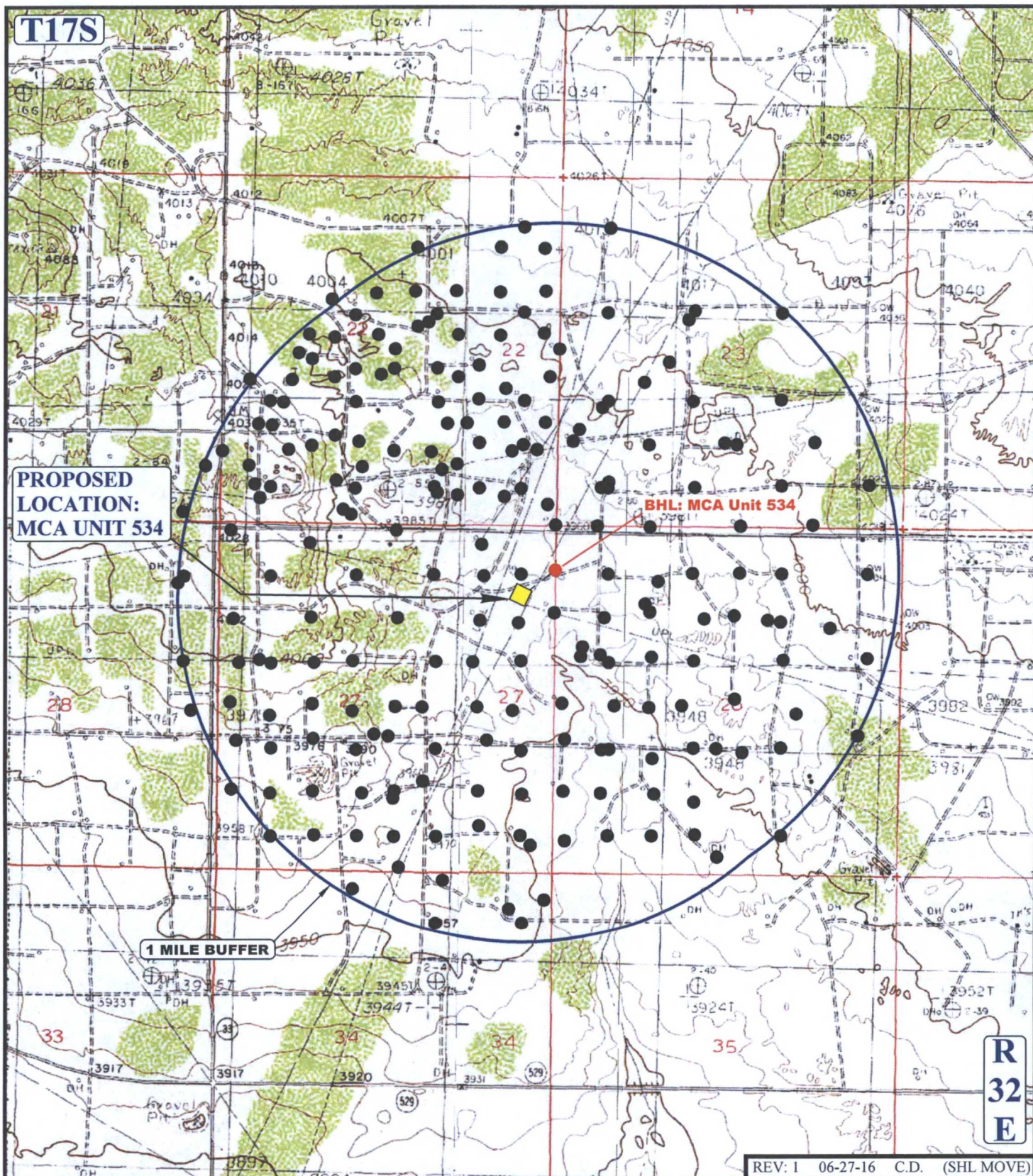


#### ConocoPhillips Company

**MCA UNIT 534**  
**1057' FNL 527' FEL**  
**NE 1/4 NE 1/4, SECTION 27, T17S, R32E, N.M.P.M.**  
**LEA COUNTY, NEW MEXICO**

SURVEYED BY	J.A.V., A.H.	06-23-16	SCALE
DRAWN BY	A.D.	08-29-13	1: 12,000
ACCESS ROAD MAP			TOPO B





# **LEGEND:**

- PRODUCING WELLS



**UELS, LLC**  
Corporate Office \* 85 South 200 East  
Vernal, UT 84078 \* (435) 789-1017

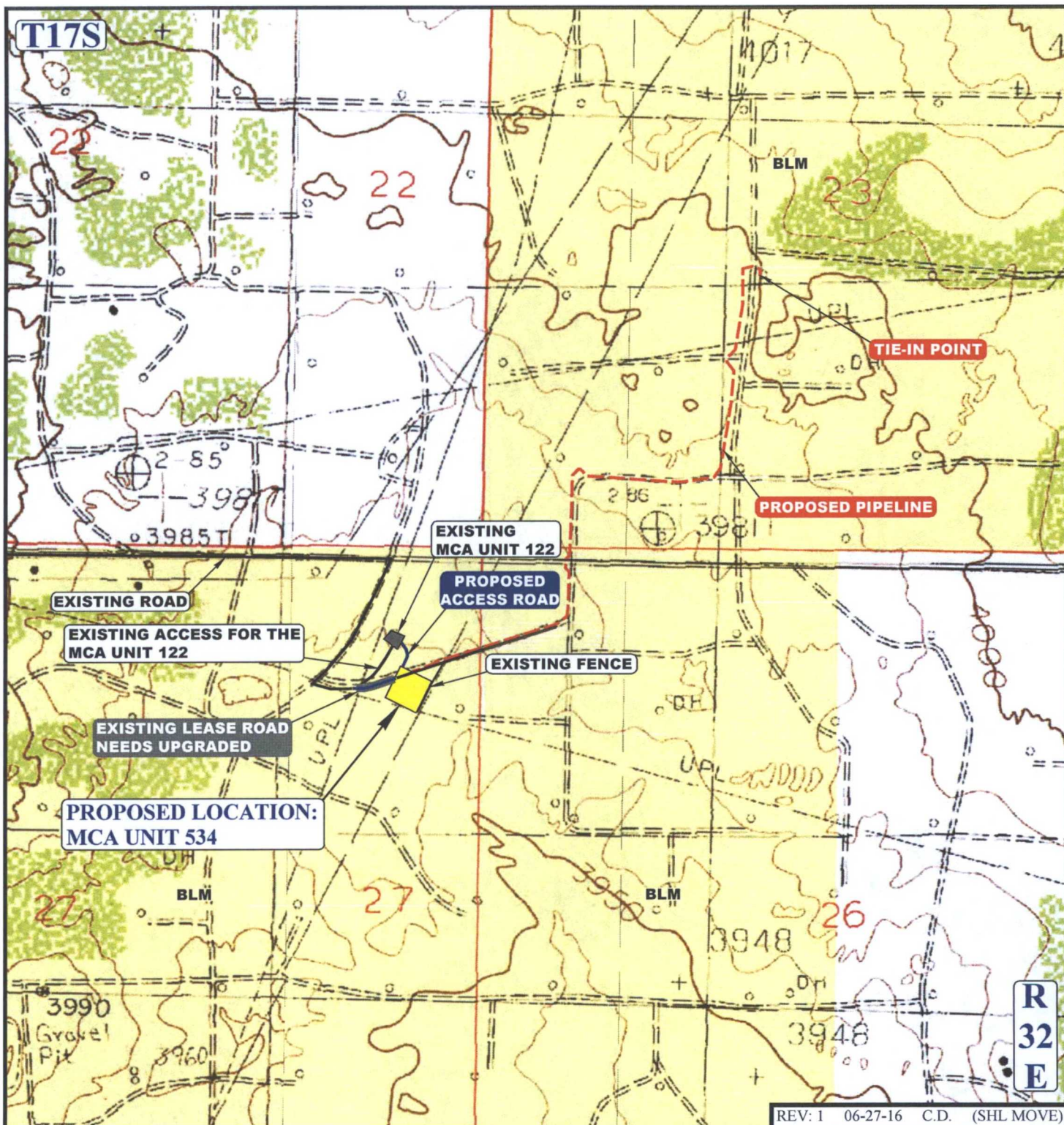


**ConocoPhillips Company**

**MCA UNIT 534**  
**1057' FNL 527' FEL**  
**NE 1/4 NE 1/4, SECTION 27, T17S, R32E, N.M.P.M.**  
**LEA COUNTY, NEW MEXICO**

SURVEYED BY	J.A.V., A.H.	06-23-16	SCALE
DRAWN BY	A.D.	08-29-13	1: 24,000
WELL PROXIMITY MAP			TOPO C





REV: 1 06-27-16 C.D. (SHL MOVE)

**APPROXIMATE TOTAL FLOW LINE DISTANCE = 5165' +/-**

NOTE: PARCEL DATA SHOWN HAS BEEN OBTAINED FROM VARIOUS SOURCES AND SHOULD BE USED FOR MAPPING, GRAPHIC AND PLANNING PURPOSES ONLY. NO WARRANTY IS MADE BY UINTEH ENGINEERING AND LAND SURVEYING (UELS) FOR ACCURACY OF THE PARCEL DATA.

**LEGEND:**

	EXISTING ROAD
	PROPOSED ROAD
	PROPOSED FLOW LINE
	EXISTING PIPELINE/FLOW LINE
	EXISTING FENCE
	EXISTING POWER LINE
	UPGRADED LEASE ROAD



**UELS, LLC**  
Corporate Office \* 85 South 200 East  
Vernal, UT 84078 \* (435) 789-1017

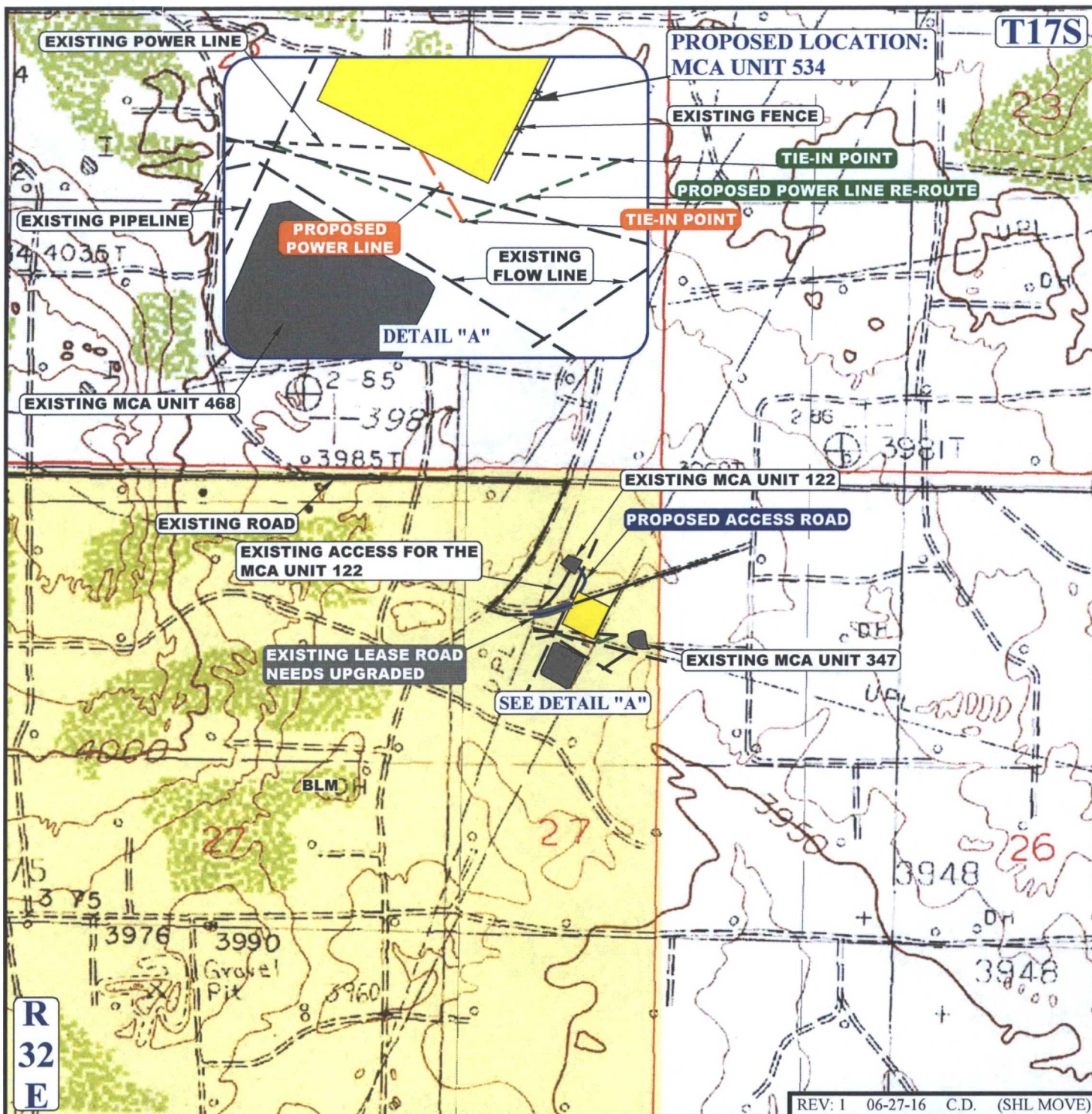


**ConocoPhillips Company**

**MCA UNIT 534**  
**1057' FNL 527' FEL**  
**NE 1/4 NE 1/4, SECTION 27, T17S, R32E, N.M.P.M.**  
**LEA COUNTY, NEW MEXICO**

SURVEYED BY	J.A.V., A.H.	06-23-16	SCALE
DRAWN BY	A.D.	08-29-13	1 : 24,000
FLOW LINE MAP			TOPO D





**APPROXIMATE TOTAL POWER LINE RE-ROUTE DISTANCE = 508' +/-**

**APPROXIMATE TOTAL POWER LINE DISTANCE = 110' +/-**

NOTE: PARCEL DATA SHOWN HAS BEEN OBTAINED FROM VARIOUS SOURCES AND SHOULD BE USED FOR MAPPING, GRAPHIC AND PLANNING PURPOSES ONLY. NO WARRANTY IS MADE BY UINTEH ENGINEERING AND LAND SURVEYING (UELS) FOR ACCURACY OF THE PARCEL DATA.

**LEGEND:**

- EXISTING ROAD
- PROPOSED ROAD
- PROPOSED POWER LINE
- PROPOSED POWER LINE RE-ROUTE
- EXISTING PIPELINE/FLOW LINE
- EXISTING FENCE
- EXISTING POWER LINE
- UPGRADED LEASE ROAD



**UELS, LLC**  
Corporate Office \* 85 South 200 East  
Vernal, UT 84078 \* (435) 789-1017



**ConocoPhillips Company**

**MCA UNIT 534**  
**1057' FNL 527' FEL**  
**NE 1/4 NE 1/4, SECTION 27, T17S, R32E, N.M.P.M.**  
**LEA COUNTY, NEW MEXICO**

SURVEYED BY	J.A.V., A.H.	06-23-16	SCALE
DRAWN BY	A.D.	08-29-13	1: 12,000
POWER LINE MAP			TOPO E



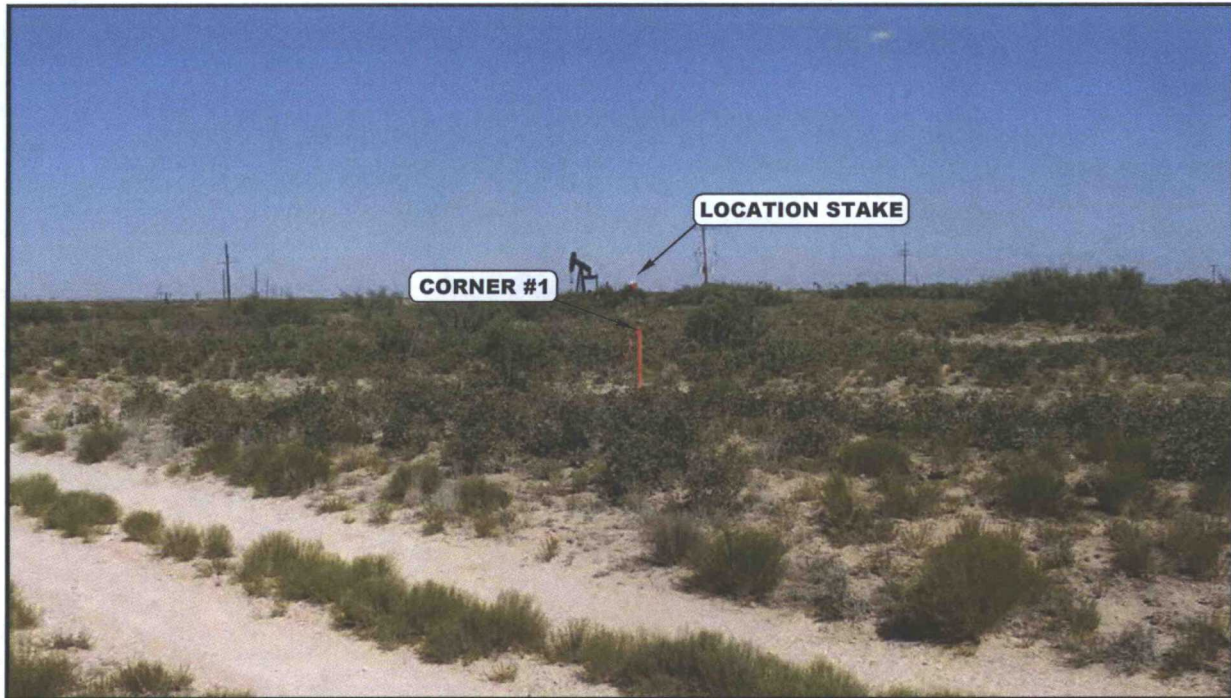


PHOTO: VIEW FROM CORNER #1 TO LOCATION STAKE

CAMERA ANGLE: SOUTHEASTERLY

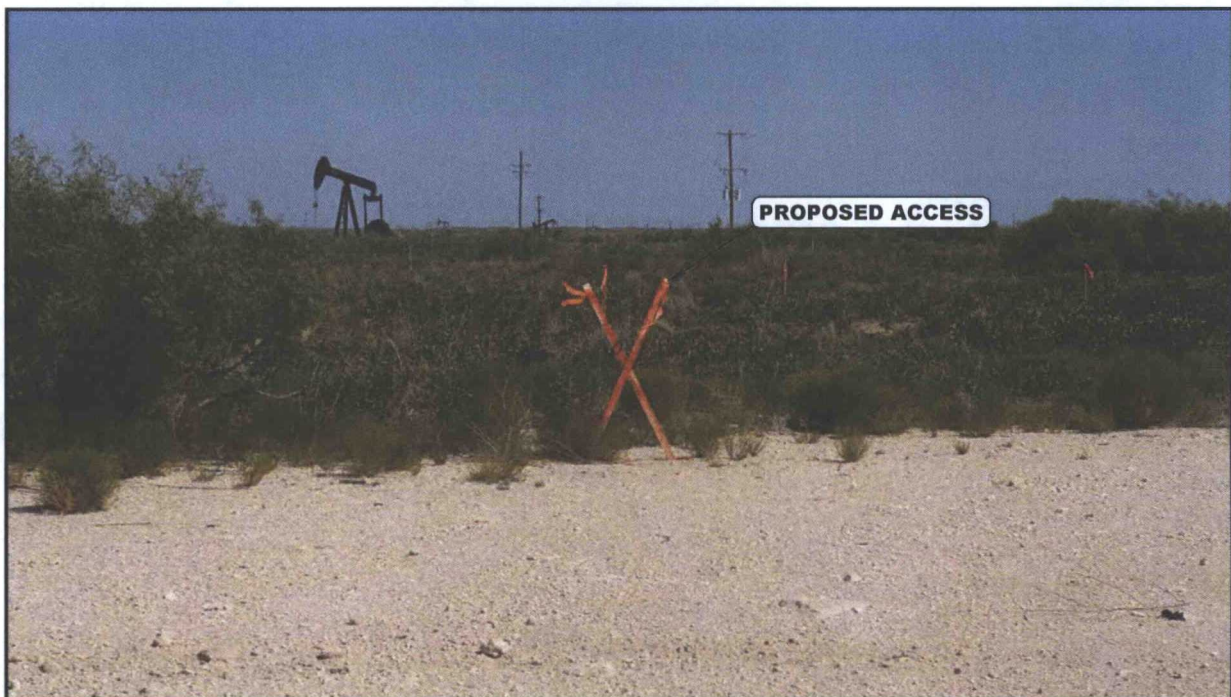


PHOTO: VIEW FROM BEGINNING OF PROPOSED ACCESS

CAMERA ANGLE: EASTERLY

REV: 1 06-27-16 C.D. (SHL MOVE)

### ConocoPhillips Company

MCA UNIT 534  
1057' FNL 527' FEL  
NE 1/4 NE 1/4, SECTION 27, T17S, R32E, N.M.P.M.  
LEA COUNTY, NEW MEXICO

TAKEN BY	J.A.V., A.H.	06-23-16	
DRAWN BY	A.D.	08-29-13	
LOCATION PHOTOS			PHOTO



UELS, LLC  
Corporate Office \* 85 South 200 East  
Vernal, UT 84078 \* (435) 789-1017



