



HOBBS OCD

HYDROGEN SULFIDE (H₂S) CONTINGENCY PLAN SEP 07 2016

RECEIVED

Assumed 100 ppm ROE = 3000'

100 ppm H₂S concentration shall trigger activation of this plan.

Emergency Procedures

In the event of a release of gas containing H₂S, the first responder(s) must

- Isolate the area and prevent entry by other persons into the 100 ppm ROE.
- Evacuate any public places encompassed by the 100 ppm ROE.
- Be equipped with H₂S monitors and air packs in order to control the release.
- Use the "buddy system" to ensure no injuries occur during the response
- Take precautions to avoid personal injury during this operation.
- Contact operator and/or local officials to aid in operation. See list of phone numbers attached.
- Have received training in the
 - o Detection of H₂S, and
 - o Measures for protection against the gas,
 - o Equipment used for protection and emergency response.

Ignition of Gas source

Should control of the well be considered lost and ignition considered, take care to protect against exposure to Sulfur Dioxide (SO₂). Intentional ignition must be coordinated with the NMOCD and local officials. Additionally the NM State Police may become involved. NM State Police shall be the Incident Command on scene of any major release. Take care to protect downwind whenever this is an ignition of the gas.

Characteristics of H₂S and SO₂

Common Name	Chemical Formula	Specific Gravity	Threshold Limit	Hazardous Limit	Lethal Concentration
Hydrogen Sulfide	H₂S	1.189 Air = 1	10 ppm	100 ppm/hr	600 ppm
Sulfur Dioxide	SO₂	2.21 Air = 1	2 ppm	N/A	1000 ppm

Contacting Authorities

XTO Energy Inc's personnel must liaison with local and state agencies to ensure a proper response to a major release. Additionally, the OCD must be notified of the release as soon as possible but no later than 4 hours. Agencies will ask for information such as type and volume of release, wind direction, location of release, etc. Be prepared with all information available including directions to site. The following call list of essential and potential responders has been prepared for use during a release. (Operator Name)'s response must be in coordination with the State of New Mexico's "Hazardous Materials Emergency Response Plan" (HMER).

EUNICE OFFICE – EDDY & LEA COUNTIES

EMSU @ Oil Center, NM, 8/10ths mile west of Hwy 8 on Hwy 175
Eunice, NM

575-394-2089

XTO ENERGY INC PERSONNEL:

Weston Turner, Drilling Engineer	817-201-6812
Bob Chance, Drilling Superintendent	432-296-3926
Jeff Raines, Construction Foreman	432-557-3159
Dudley McMinn, EH & S Manager	432-557-7976
Rick Wilson, Production Foreman	575-441-1147

SHERIFF DEPARTMENTS:

Eddy County	575-887-7551
Lea County	575-396-3611

NEW MEXICO STATE POLICE:

575-392-5588

FIRE DEPARTMENTS:

	911
Carlsbad	575-885-2111
Eunice	575-394-2111
Hobbs	575-397-9308
Jal	575-395-2221
Lovington	575-396-2359

HOSPITALS:

	911
Carlsbad Medical Emergency	575-885-2111
Eunice Medical Emergency	575-394-2112
Hobbs Medical Emergency	575-397-9308
Jal Medical Emergency	575-395-2221
Lovington Medical Emergency	575-396-2359

AGENT NOTIFICATIONS:

Bureau of Land Management	575-393-3612
New Mexico Oil Conservation Division	575-393-6161
Mosaic Potash - Carlsbad	575-887-2871

CONTRACTORS:

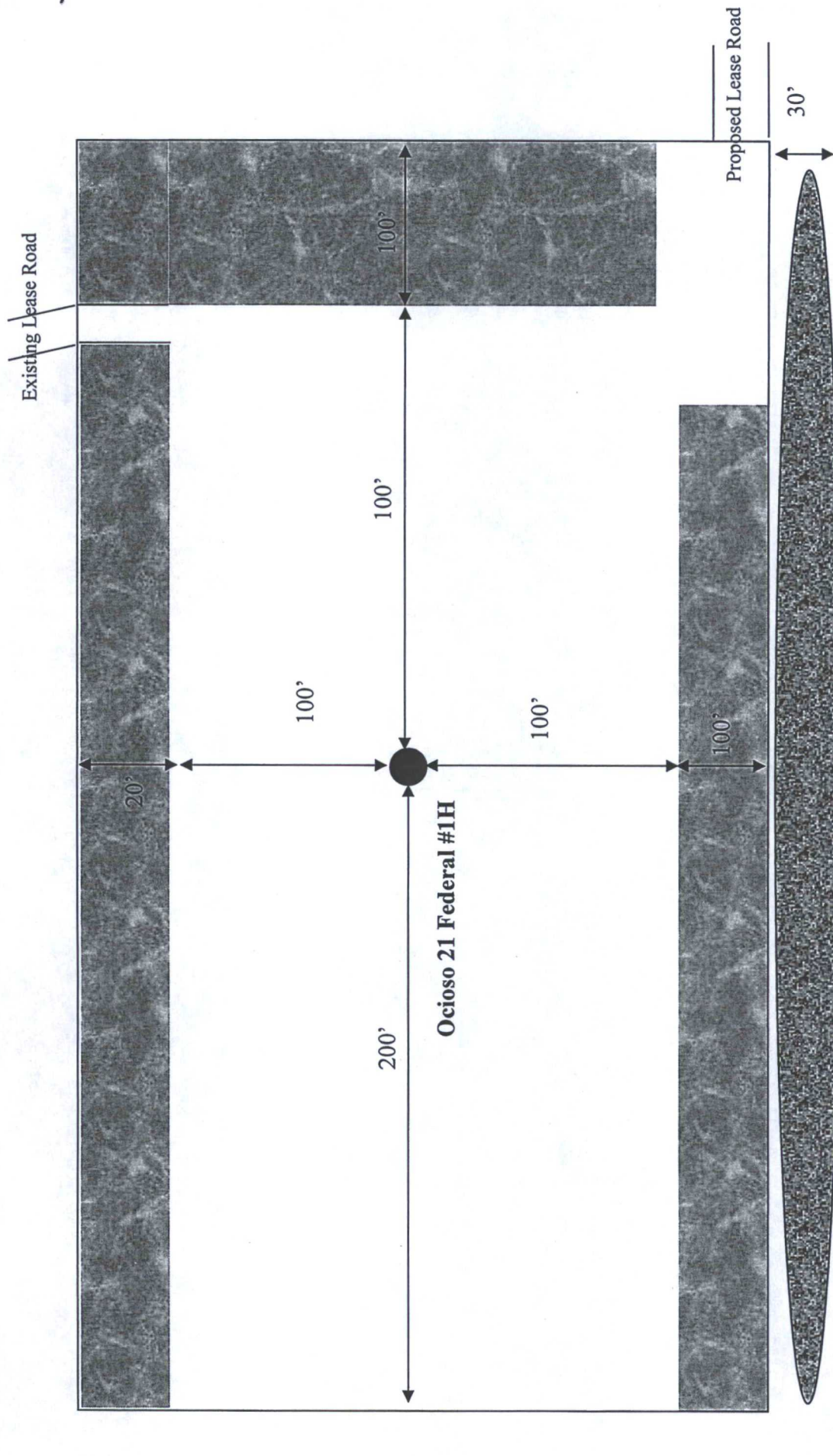
ABC Rental – Light Towers	575-394-3155
Bulldog Services – Trucking/Forklift	575-391-8543
Champion – Chemical	575-393-7726
Indian Fire & Safety	575-393-3093
Key – Dirt Contractor	575-393-3180
Key Tools – Light Towers	575-393-2415
Sweatt – Dirt Contractor	575-397-4541
RWI – Contract Gang	575-393-5305

EXHIBIT D

Interim Reclamation Diagram

Ocioso 21 Federal Com #1H

V-Door East



LEGEND

- | | | | |
|---|---------------------|---|--------------|
|  | Wellbore |  | Ditch & Berm |
|  | Interim Reclamation |  | Topsoil |