

DISTRICT I  
1625 N. French Dr., Hobbs, NM 88240  
Phone: (575) 393-6161 Fax: (575) 393-0720

DISTRICT II  
811 S. First St., Artesia, NM 88210  
Phone: (575) 748-1283 Fax: (575) 748-9720

DISTRICT III  
1000 Rio Brazos Road, Aztec, NM 87410  
Phone: (505) 334-6178 Fax: (505) 334-6170

DISTRICT IV  
1220 S. St. Francis Dr., Santa Fe, NM 87505  
Phone: (505) 476-3460 Fax: (505) 476-3462

State of New Mexico  
Energy, Minerals & Natural Resources Department  
OIL CONSERVATION DIVISION  
1220 South St. Francis Dr.  
Santa Fe, New Mexico 87505

Form C-102  
Revised August 1, 2011  
Submit one copy to appropriate  
District Office

AMENDED REPORT

WELL LOCATION AND ACREAGE DEDICATION PLAT

API Number <b>70-025-43415</b>	Pool Code <b>97895</b>	Pool Name <b>WC-025 G-08 52133040 Bone Spring</b>
Property Code <b>316800</b>	Property Name <b>SEVERUS 31 FEDERAL COM</b>	Well Number <b>1H</b>
OGRID No. <b>005380</b>	Operator Name <b>XTO ENERGY</b>	Elevation <b>3700'</b>

Surface Location

UL or lot No.	Section	Township	Range	Lot Idn	Feet from the	North/South line	Feet from the	East/West line	County
O	30	20-S	34-E		130	SOUTH	2175	EAST	LEA

Bottom Hole Location If Different From Surface

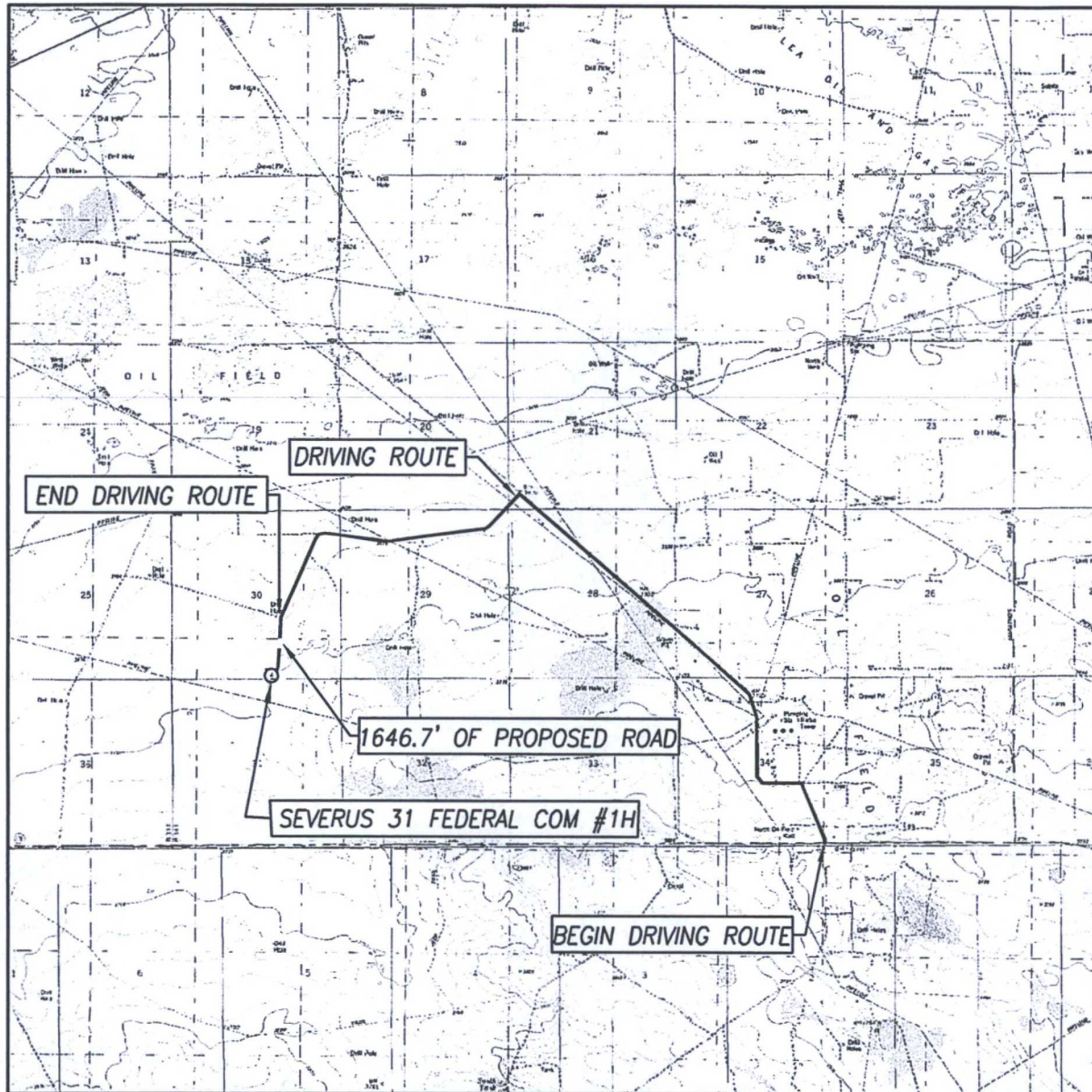
UL or lot No.	Section	Township	Range	Lot Idn	Feet from the	North/South line	Feet from the	East/West line	County
P	31	20-S	34-E		200	SOUTH	400	EAST	LEA
Dedicated Acres <b>160</b>	Joint or Infill	Consolidation Code	Order No.						

NO ALLOWABLE WILL BE ASSIGNED TO THIS COMPLETION UNTIL ALL INTERESTS HAVE BEEN CONSOLIDATED OR A NON-STANDARD UNIT HAS BEEN APPROVED BY THE DIVISION

<p><b>CORNER COORDINATES TABLE</b> NAD 27 NME</p> <p>A - Y= 561080.6 N, X= 726265.6 E B - Y= 561093.4 N, X= 727585.8 E C - Y= 559774.3 N, X= 727596.2 E D - Y= 558468.3 N, X= 728926.2 E E - Y= 554479.4 N, X= 727632.5 E F - Y= 554487.7 N, X= 728955.8 E</p> <p>40.12 40.14 40.16 40.14 40.10 40.06 40.02</p> <p>SEC. 30 SEC. 31</p> <p>GRID AZ.=110°39'48" HORIZ. DIST.=1270.2'</p> <p>S.L. 1ST TP 2175' 330' 990'</p> <p>GRID AZ.=172°31'09" HORIZ. DIST.=4804.5'</p> <p>416' 400' 330' 200'</p> <p>B.H.</p>	<p><b>CORNER COORDINATES TABLE</b> NAD 83 NME</p> <p>A - Y= 561142.7 N, X= 767446.8 E B - Y= 561155.5 N, X= 768767.0 E C - Y= 559836.4 N, X= 768777.4 E D - Y= 558530.4 N, X= 770107.5 E E - Y= 554541.3 N, X= 768813.8 E F - Y= 554549.6 N, X= 770137.2 E</p> <p><b>GEODETIC COORDINATES</b> NAD 83 NME SURFACE LOCATION Y= 559957.9 N X= 767922.1 E LAT.=32.537233° N LONG.=103.598076° W</p> <p>1st TP NAD 83 NME Y= 559509.7 N X= 769110.4 E LAT.=32.535978° N LONG.=103.594231° W</p> <p>2nd TP NAD 83 NME Y= 554876.9 N X= 769718.7 E LAT.=32.523233° N LONG.=103.592361° W</p> <p><b>BOTTOM HOLE LOCATION</b> NAD 83 NME Y= 554747.1 N X= 769735.8 E LAT.=32.522876° N LONG.=103.592309° W</p> <p><b>GEODETIC COORDINATES</b> NAD 27 NME SURFACE LOCATION Y= 559895.8 N X= 726740.9 E LAT.=32.537110° N LONG.=103.597586° W</p> <p>1st TP NAD 27 NME Y= 559447.7 N X= 727929.2 E LAT.=32.535855° N LONG.=103.593741° W</p> <p>2nd TP NAD 27 NME Y= 554815.0 N X= 728537.4 E LAT.=32.523110° N LONG.=103.591872° W</p> <p><b>BOTTOM HOLE LOCATION</b> NAD 27 NME Y= 554685.1 N X= 728554.4 E LAT.=32.522753° N LONG.=103.591819° W</p>	<p><b>OPERATOR CERTIFICATION</b> I hereby certify that the information herein is true and complete to the best of my knowledge and belief, and that this organization either owns a working interest or unleased mineral interest in the land including the proposed bottom hole location or has a right to drill this well at this location pursuant to a contract with an owner of such mineral or working interest, or to a voluntary pooling agreement or a compulsory pooling order heretofore entered by the division.</p> <p><i>Stephanie Rabadue</i> Signature Date <i>Stephanie Rabadue</i> Printed Name <i>Stephanie - rabadue@xtoenergy.com</i> E-mail Address</p> <p><b>SURVEYOR CERTIFICATION</b> I hereby certify that the well location shown on this plat was plotted from field notes of actual surveys made by me or under my supervision, and that the same is true and correct to the best of my belief.</p> <p>DECEMBER 17, 2014 Date of Survey Signature of Professional Surveyor: <i>Ronald J. Eidson</i> NEW MEXICO REGISTERED SURVEYOR 3239 Certificate Number Gary G. Eidson 12641 Ronald J. Eidson 3239 LSL REV 2-9-15 JWSC W.O.: 14.11.1336</p>
----------------------------------------------------------------------------------------------------------------------------------------------------------------------------------------------------------------------------------------------------------------------------------------------------------------------------------------------------------------------------------------------------------------------------------------------------------------------------------------------------------------------------------------------------------------------------------------------------------	----------------------------------------------------------------------------------------------------------------------------------------------------------------------------------------------------------------------------------------------------------------------------------------------------------------------------------------------------------------------------------------------------------------------------------------------------------------------------------------------------------------------------------------------------------------------------------------------------------------------------------------------------------------------------------------------------------------------------------------------------------------------------------------------------------------------------------------------------------------------------------------------------------------------------------------------------------------------------------------------------------------------------------------------------------------------------------------------------------------------------------------------------------------------------------------------------------------------------------------------------------------------------------------------------------------------------------------------	-------------------------------------------------------------------------------------------------------------------------------------------------------------------------------------------------------------------------------------------------------------------------------------------------------------------------------------------------------------------------------------------------------------------------------------------------------------------------------------------------------------------------------------------------------------------------------------------------------------------------------------------------------------------------------------------------------------------------------------------------------------------------------------------------------------------------------------------------------------------------------------------------------------------------------------------------------------------------------------------------------------------------------------------------------------------------------------------------------------------------------------------------------------------------------------------------------------------------------------------------



# LOCATION VERIFICATION MAP



SCALE: 1" = 5280'

CONTOUR INTERVAL;  
LEA, N.M. - 10'

SEC. 30 TWP. 20-S RGE. 34-E

SURVEY N.M.P.M.

COUNTY LEA STATE NEW MEXICO

DESCRIPTION 130' FSL & 2175' FEL

ELEVATION 3700'

OPERATOR XTO ENERGY

LEASE SEVERUS 31 FEDERAL COM

U.S.G.S. TOPOGRAPHIC MAP  
LEA, N.M.

DIRECTIONS TO SEVERUS 31 FEDERAL COM #1H:

FROM THE MILE MARKER 11 GO EAST ON ST. 176 APPROX. 0.4 MILES TO SKEEN ROAD. TURN LEFT AND GO NORTHWEST APPROX. 3.0 MILES, TURN LEFT AND GO SOUTHWEST APPROX. 0.3 MILES, THEN ROAD BENDS RIGHT AND GO WEST APPROX. 1.2 MILES TO THE Y GO LEFT AND GO SOUTHWEST APPROX. 0.6 MILES TO THE PROPOSED ROAD. FOLLOW PROPOSED ROAD STAKES SOUTH 1646.7' TO THIS LOCATION.



PROVIDING SURVEYING SERVICES  
SINCE 1946

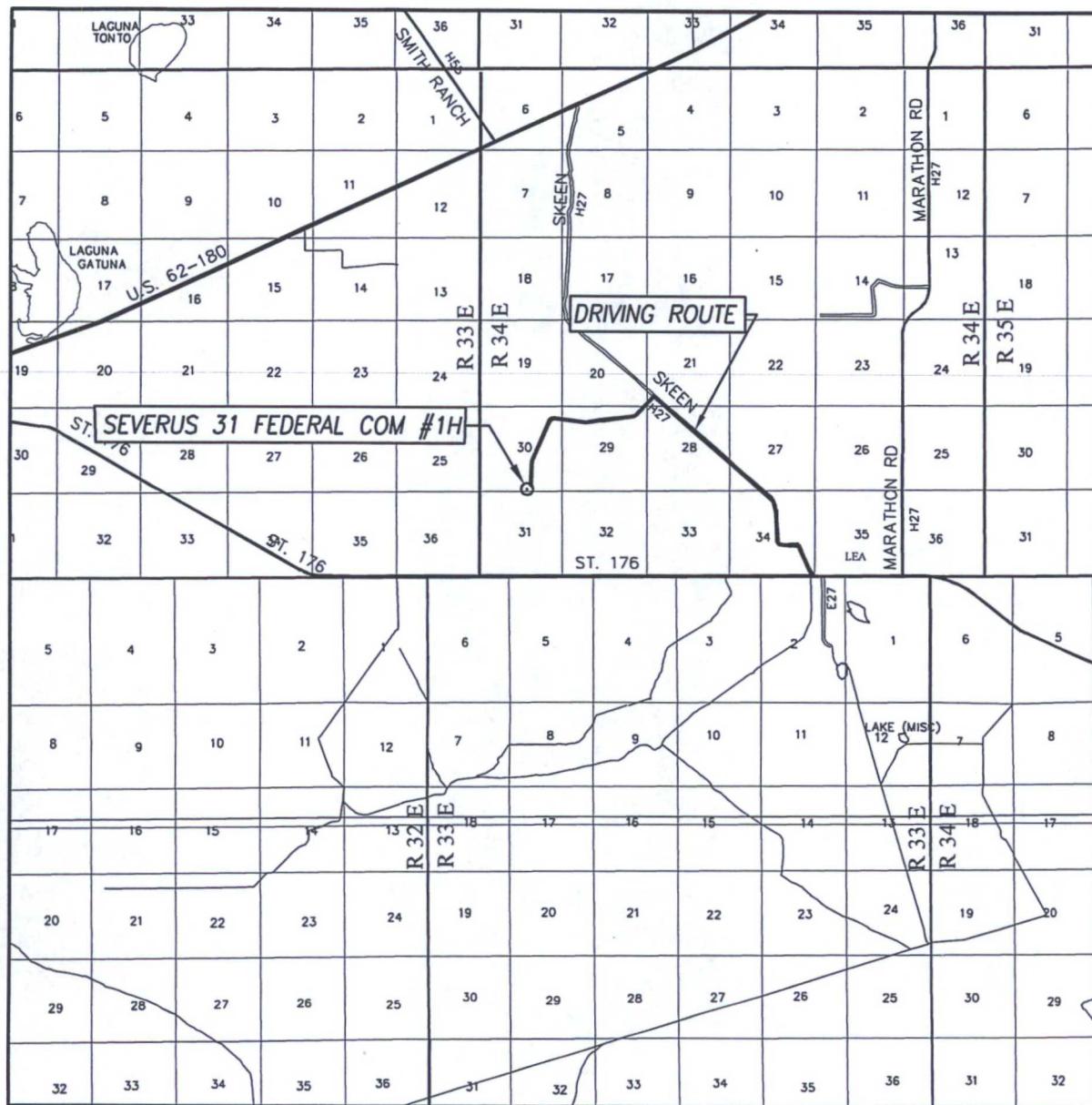
**JOHN WEST SURVEYING COMPANY**

412 N. DAL PASO HOBBS, N.M. 88240

(575) 393-3117 [www.jwsc.biz](http://www.jwsc.biz)

TBPLS# 10021000

# VICINITY MAP



SCALE: 1" = 2 MILES

DRIVING ROUTE: SEE LOCATION VERIFICATION MAP

SEC. 30 TWP. 20-S RGE. 34-E

SURVEY N.M.P.M.

COUNTY LEA STATE NEW MEXICO

DESCRIPTION 130' FSL & 2175' FEL

ELEVATION 3700'

OPERATOR XTO ENERGY

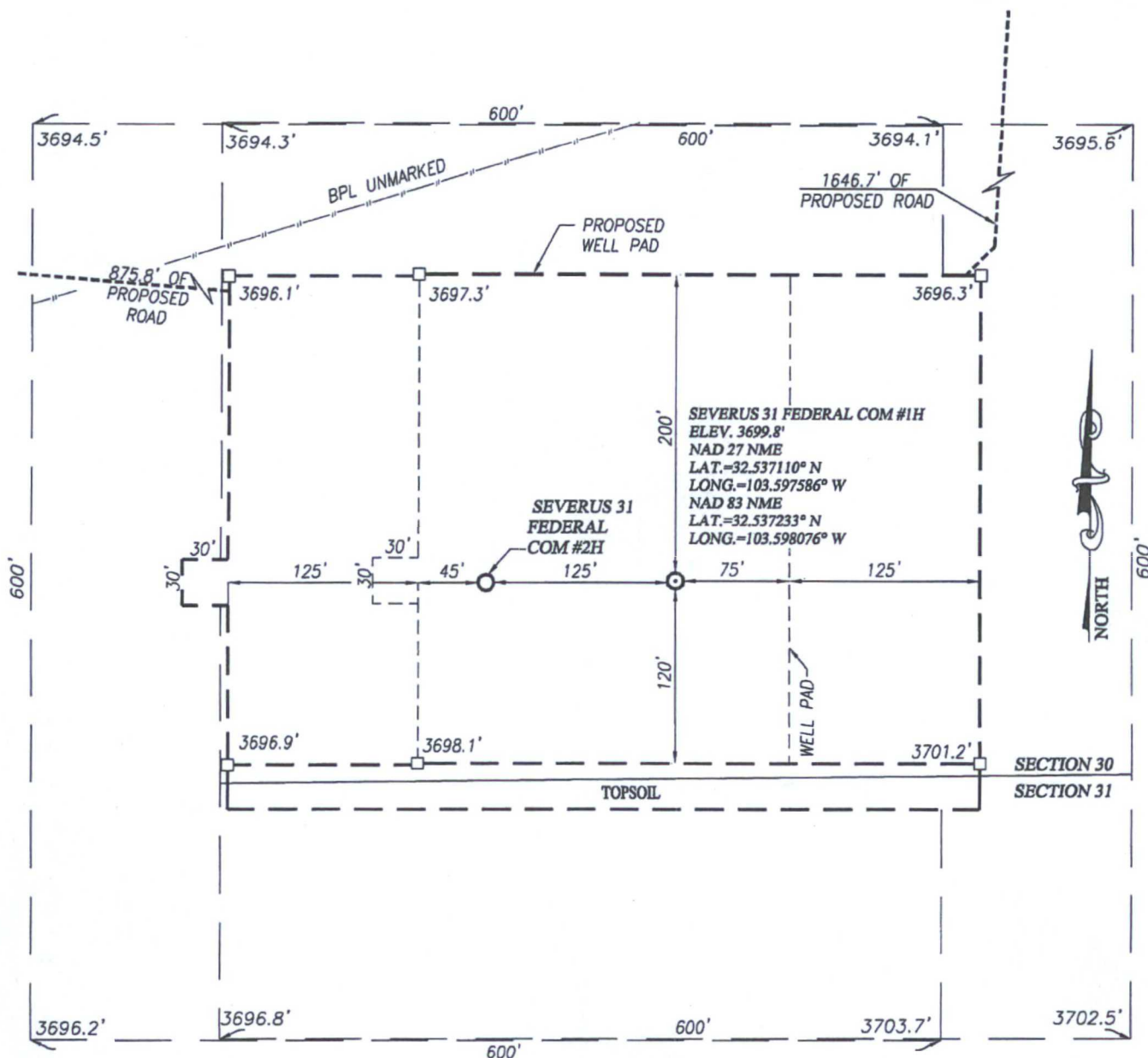
LEASE SEVERUS 31 FEDERAL COM

PROVIDING SURVEYING SERVICES  
SINCE 1946

**JOHN WEST SURVEYING COMPANY**

412 N. DAL PASO HOBBS, N.M. 88240  
(575) 393-3117 [www.jwsc.biz](http://www.jwsc.biz)  
TBPLS# 10021000

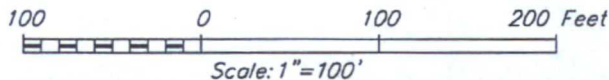




NOTE:  
1) SEE "LOCATION VERIFICATION MAP"  
FOR PROPOSED ROAD LOCATION.

#### DIRECTIONS TO SEVERUS 31 FEDERAL COM #1H:

FROM THE MILE MARKER 11 GO EAST ON ST. 176 APPROX. 0.4 MILES TO SKEEN ROAD. TURN LEFT AND GO NORTHWEST APPROX. 3.0 MILES, TURN LEFT AND GO SOUTHWEST APPROX. 0.3 MILES, THEN ROAD BENDS RIGHT AND GO WEST APPROX. 1.2 MILES TO THE Y GO LEFT AND GO SOUTHWEST APPROX. 0.6 MILES TO THE PROPOSED ROAD. FOLLOW PROPOSED ROAD STAKES SOUTH 1646.7' TO THIS LOCATION.



## XTO ENERGY

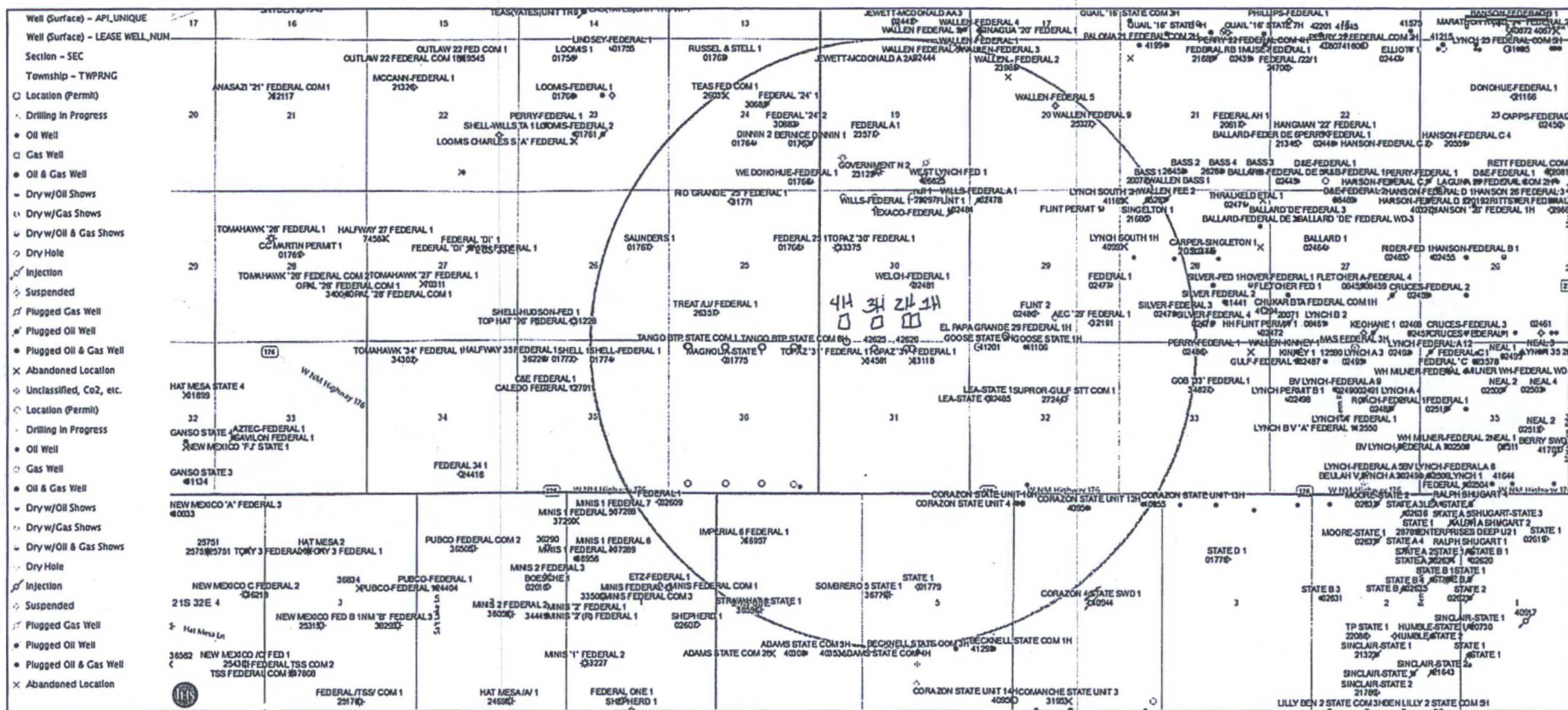
**SEVERUS 31 FEDERAL COM #1H WELL**  
LOCATED 130 FEET FROM THE SOUTH LINE  
AND 2175 FEET FROM THE EAST LINE OF SECTION 30,  
TOWNSHIP 20 SOUTH, RANGE 34 EAST, N.M.P.M.,  
LEA COUNTY, NEW MEXICO



PROVIDING SURVEYING SERVICES  
SINCE 1946  
**JOHN WEST SURVEYING COMPANY**  
412 N. DAL PASO HOBBS, N.M. 88240  
(575) 393-3117 www.jwsc.biz  
TBPLS# 10021000

Survey Date: 12/17/14	CAD Date: 2/1/16	Drawn By: ACK
W.O. No.: 16130084	Rev.:	Rel. W.O.: 14111336
		Sheet 1 of 1

# Severus Federal Lease



1-mile radius map



January 8, 2016

Stephanie Rabadue  
XTO Energy Inc.  
500 W. Illinois St., Ste. 100  
Midland, TX 79701  
432-620-6714  
stephanie\_rabadue@xtoenergy.com

Bureau of Land Management  
620 E. Greene  
Carlsbad, NM 88220  
575-887-6544

Dear Sirs:

XTO Energy Inc. does not anticipate encountering H<sub>2</sub>S while drilling the Severus 31 Federal Com #1H located in Section 30, T20S, R34E, in Lea County, New Mexico. As a precaution, I have attached an H<sub>2</sub>S contingency plan. If you need anything further, please contact me at the telephone number or email listed above.

Thank you,

A handwritten signature in cursive script that reads 'Stephanie Rabadue'.

Stephanie Rabadue  
Regulatory Analyst