



HYDROGEN SULFIDE (H₂S) CONTINGENCY PLAN

Assumed 100 ppm ROE = 3000'

100 ppm H₂S concentration shall trigger activation of this plan.

Emergency Procedures

In the event of a release of gas containing H₂S, the first responder(s) must

- Isolate the area and prevent entry by other persons into the 100 ppm ROE.
- Evacuate any public places encompassed by the 100 ppm ROE.
- Be equipped with H₂S monitors and air packs in order to control the release.
- Use the "buddy system" to ensure no injuries occur during the response
- Take precautions to avoid personal injury during this operation.
- Contact operator and/or local officials to aid in operation. See list of phone numbers attached.
- Have received training in the
 - o Detection of H₂S, and
 - o Measures for protection against the gas,
 - o Equipment used for protection and emergency response.

Ignition of Gas source

Should control of the well be considered lost and ignition considered, take care to protect against exposure to Sulfur Dioxide (SO₂). Intentional ignition must be coordinated with the NMOCD and local officials. Additionally the NM State Police may become involved. NM State Police shall be the Incident Command on scene of any major release. Take care to protect downwind whenever this is an ignition of the gas.

Characteristics of H₂S and SO₂

Common Name	Chemical Formula	Specific Gravity	Threshold Limit	Hazardous Limit	Lethal Concentration
Hydrogen Sulfide	H ₂ S	1.189 Air = 1	10 ppm	100 ppm/hr	600 ppm
Sulfur Dioxide	SO ₂	2.21 Air = 1	2 ppm	N/A	1000 ppm

Contacting Authorities

XTO Energy Inc's personnel must liaison with local and state agencies to ensure a proper response to a major release. Additionally, the OCD must be notified of the release as soon as possible but no later than 4 hours. Agencies will ask for information such as type and volume of release, wind direction, location of release, etc. Be prepared with all information available including directions to site. The following call list of essential and potential responders has been prepared for use during a release. (Operator Name)'s response must be in coordination with the State of New Mexico's "Hazardous Materials Emergency Response Plan" (HMER).

EUNICE OFFICE – EDDY & LEA COUNTIES

EMSU @ Oil Center, NM, 8/10ths mile west of Hwy 8 on Hwy 175
Eunice, NM

575-394-2089

XTO ENERGY INC PERSONNEL:

Milton Turman, Sr. Drilling Superintendent	432-556-7403
Bob Chance, Drilling Superintendent	432-296-3926
Jeff Raines, Construction Foreman	432-557-3159
Dudley McMinn, EH & S Manager	432-557-7976
Rick Wilson, Production Foreman	575-441-1147

SHERIFF DEPARTMENTS:

Eddy County	575-887-7551
Lea County	575-396-3611

NEW MEXICO STATE POLICE:

575-392-5588

FIRE DEPARTMENTS:

	911
Carlsbad	575-885-2111
Eunice	575-394-2111
Hobbs	575-397-9308
Jal	575-395-2221
Lovington	575-396-2359

HOSPITALS:

	911
Carlsbad Medical Emergency	575-885-2111
Eunice Medical Emergency	575-394-2112
Hobbs Medical Emergency	575-397-9308
Jal Medical Emergency	575-395-2221
Lovington Medical Emergency	575-396-2359

AGENT NOTIFICATIONS:

Bureau of Land Management	575-393-3612
New Mexico Oil Conservation Division	575-393-6161
Mosaic Potash - Carlsbad	575-887-2871

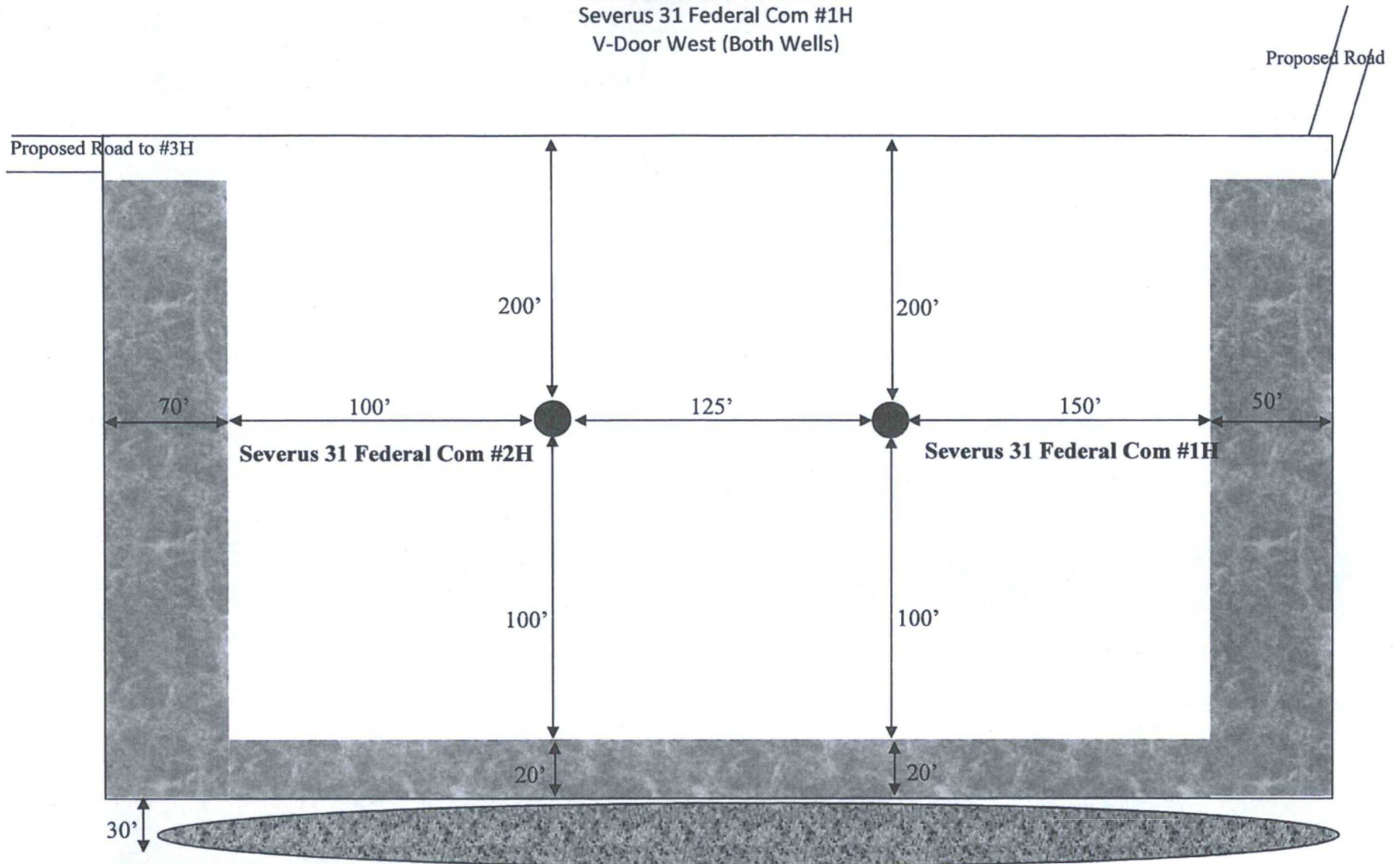
CONTRACTORS:

ABC Rental – Light Towers	575-394-3155
Bulldog Services – Trucking/Forklift	575-391-8543
Champion – Chemical	575-393-7726
Indian Fire & Safety	575-393-3093
Key – Dirt Contractor	575-393-3180
Key Tools – Light Towers	575-393-2415
Sweatt – Dirt Contractor	575-397-4541
RWI – Contract Gang	575-393-5305

Interim Reclamation Diagram

Severus 31 Federal Com #1H

V-Door West (Both Wells)

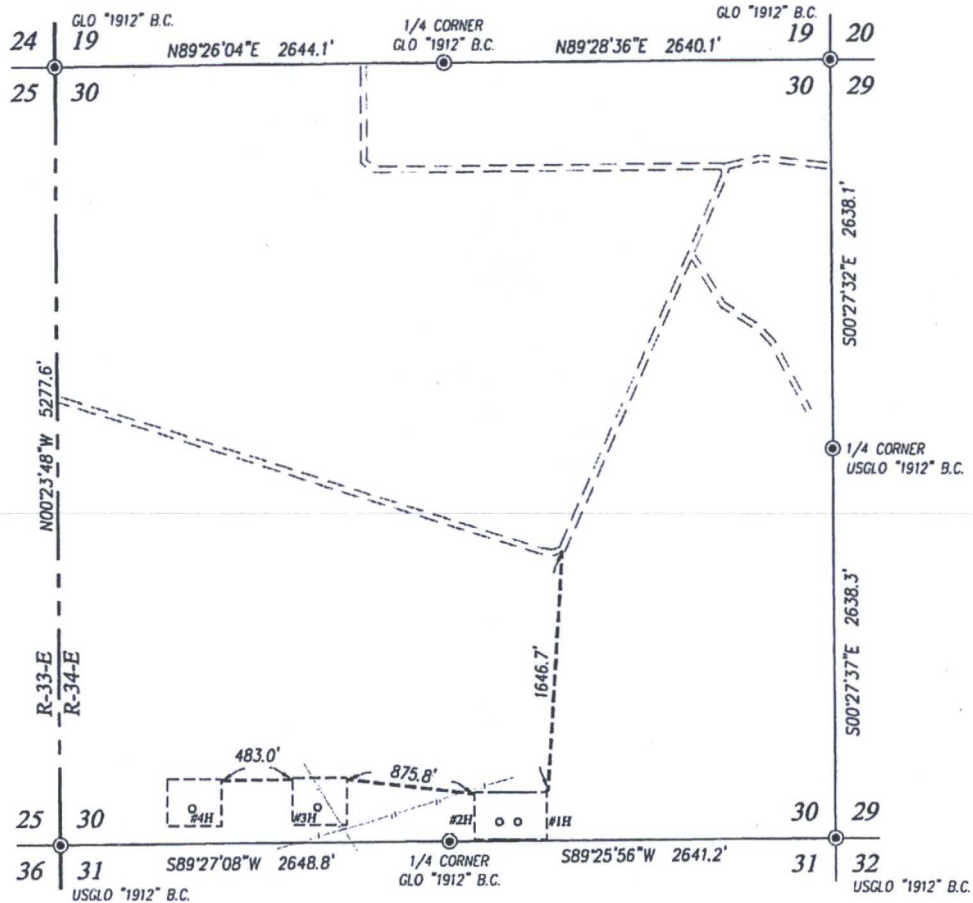


LEGEND

-  Wellbore
-  Interim Reclamation

-  Ditch & Berm
-  Topsoil

Trishia Bad Bear previously cleared this drill island with BC Operating and gave XTO Energy, Inc. verbal permission to stake the wells so long as they fell on the approved drilling island.



LEGEND:

- ⊙ DENOTES FOUND CORNER AS NOTED
- DENOTES PROPOSED WELL
- — — — — DENOTES ELECTRIC LINE
- — — — — DENOTES PIPELINE
- == == == == == DENOTES EXISTING ROAD
- PROPOSED ROAD

NOTE

BEARINGS SHOWN HEREON ARE MERCATOR GRID AND CONFORM TO THE NEW MEXICO COORDINATE SYSTEM "NEW MEXICO EAST ZONE" NORTH AMERICAN DATUM 1983. DISTANCES ARE SURFACE VALUES.

I, RONALD J. EIDSON, NEW MEXICO PROFESSIONAL SURVEYOR No. 3239, DO HEREBY CERTIFY THAT THIS SURVEY, PLAN AND THE ACTUAL SURVEY ON THE GROUND UPON WHICH IT IS BASED, WERE PERFORMED BY ME OR UNDER MY DIRECT SUPERVISION, THAT I AM RESPONSIBLE FOR THIS SURVEY; THAT THIS SURVEY MEETS THE MINIMUM STANDARDS FOR SURVEYING IN NEW MEXICO; AND THAT IT IS TRUE AND CORRECT TO THE BEST OF MY KNOWLEDGE AND BELIEF.

RONALD J. EIDSON

DATE: 02/04/2015

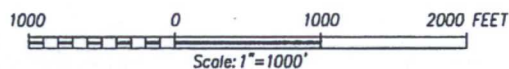


PROVIDING SURVEYING SERVICES
SINCE 1946
JOHN WEST SURVEYING COMPANY
412 N. DAL PASO HOBBS, N.M. 88240
(575) 393-3117 www.jwsc.biz
TBPLS# 10021000

© DRAFTING

LEGEND

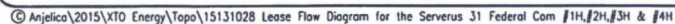
- ⊙ DENOTES FOUND CORNER AS NOTED

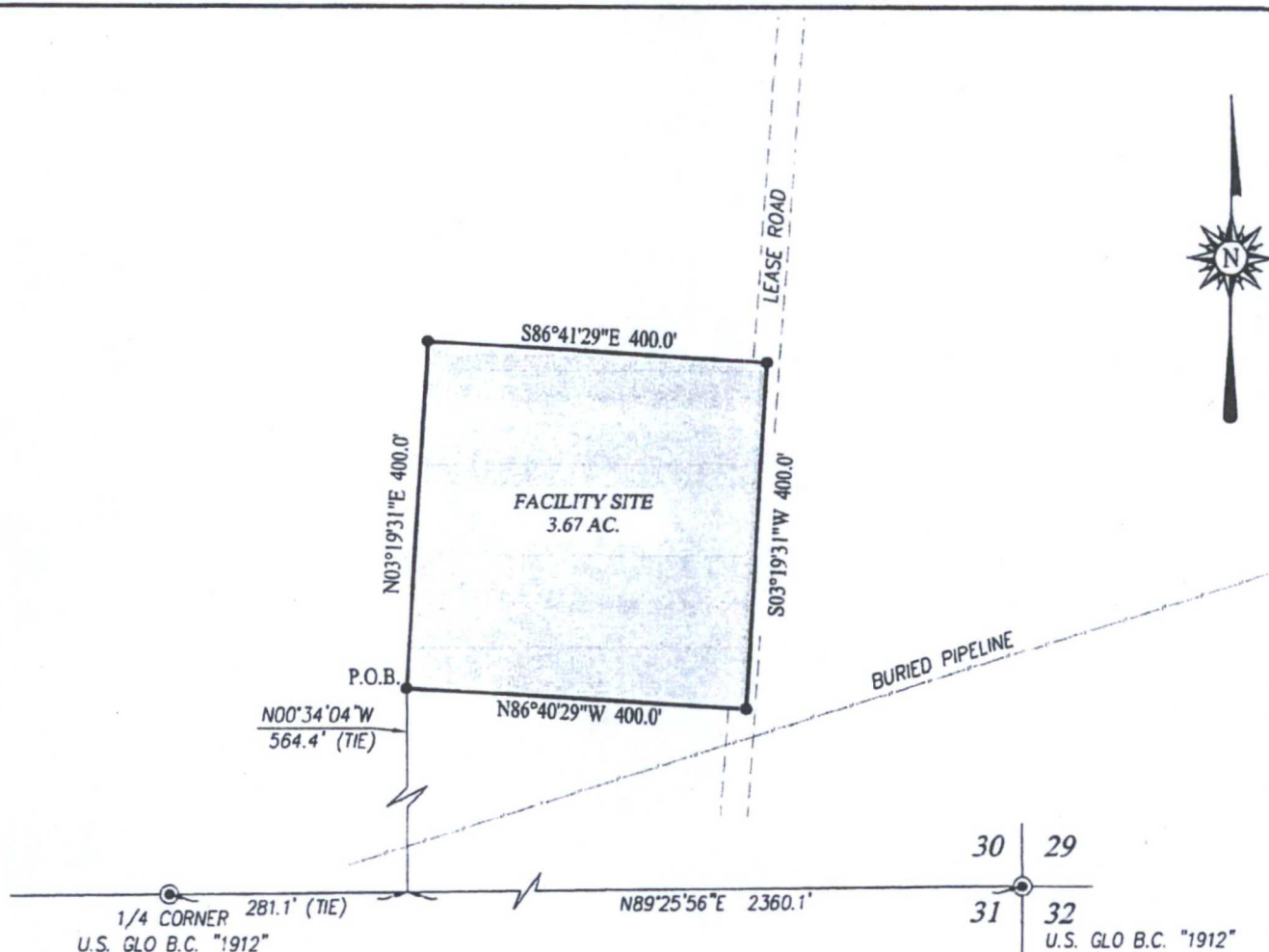


XTO ENERGY

LEASE FLOW MAP FOR
THE SEVERUS 31 FEDERAL COM LEASE
LOCATED IN SECTIONS 30,
TOWNSHIP 20 SOUTH, RANGE 34 EAST, N.M.P.M.
LEA COUNTY, NEW MEXICO

Survey Date: 12/17/14	CAD Date: 1/30/15	Drawn By: LSL
W.O. No.: 15130133	Rev. .	Rel. W.O.:
		Sheet 1 of 1





LEGEND

- ⊙ DENOTES FOUND CORNER AS NOTED
- DENOTES TRACT CORNER

NOTE

BEARINGS SHOWN HEREON ARE MERCATOR GRID AND CONFORM TO THE NEW MEXICO COORDINATE SYSTEM "NEW MEXICO EAST ZONE" NORTH AMERICAN DATUM 1983. DISTANCES ARE SURFACE VALUES.

I, RONALD J. EIDSON, NEW MEXICO PROFESSIONAL SURVEYOR No. 3239, DO HEREBY CERTIFY THAT THIS SURVEY PLAT AND THE ACTUAL SURVEY ON THE GROUND UPON WHICH IT IS BASED WERE PERFORMED BY ME OR UNDER MY DIRECT SUPERVISION; THAT I AM RESPONSIBLE FOR THIS SURVEY; THAT THIS SURVEY MEETS THE MINIMUM STANDARDS FOR SURVEYING IN NEW MEXICO; AND THAT IT IS TRUE AND CORRECT TO THE BEST OF MY KNOWLEDGE AND BELIEF.

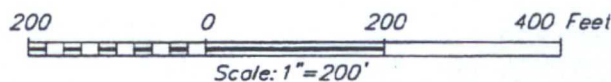
RONALD J. EIDSON *Ronald J. Eidson*

DATE: 07/30/2015

DESCRIPTION:

A TRACT SITUATED IN THE SOUTHEAST QUARTER OF SECTION 31, TOWNSHIP 20 SOUTH, RANGE 34 EAST, N.M.P.M., LEA COUNTY, NEW MEXICO AND BEING MORE PARTICULARLY DESCRIBED AS FOLLOWS:

BEGINNING AT THE SOUTHWEST CORNER, WHICH LIES N89°25'56"E 281.1 FEET AND N00°34'04"W 564.4 FEET FROM THE SOUTH 1/4 CORNER; THEN N03°19'31"E 400.0 FEET; THEN S89°41'29"E 400.0 FEET; THEN S03°19'31"W 400.0 FEET; THEN N89°40'29"W 400.0 FEET TO THE POINT OF BEGINNING AND CONTAINING 3.67 ACRES MORE OR LESS.

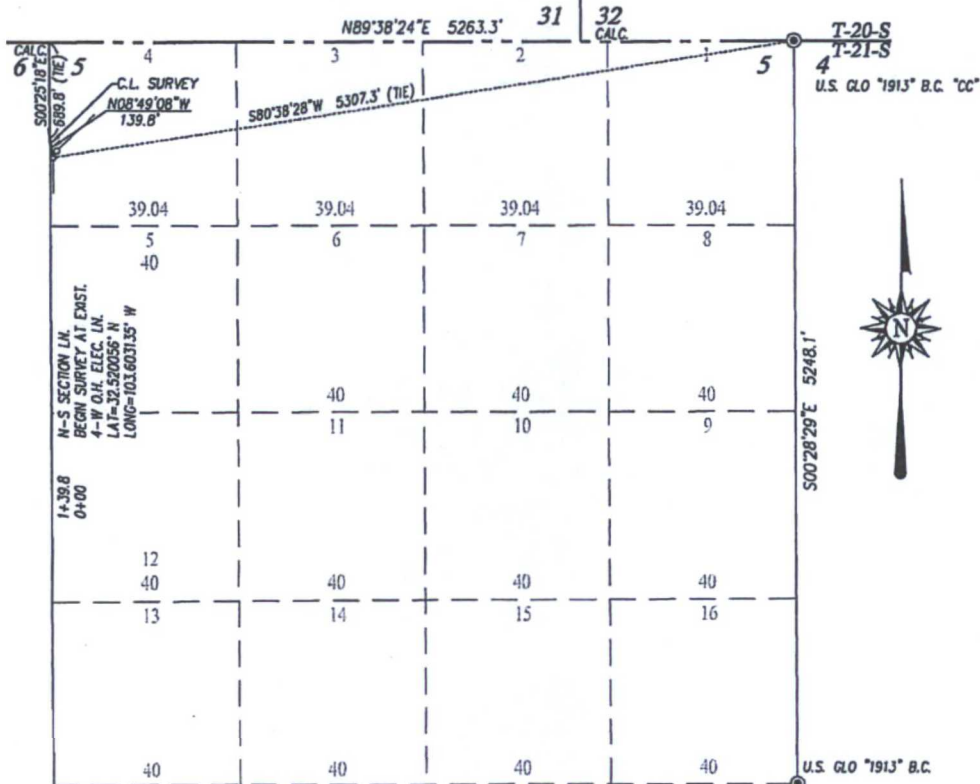


XTO ENERGY

SURVEY FOR A FACILITY SITE FOR THE SEVERUS FEDERAL LEASE SITUATED IN THE SE/4 OF SECTION 31, TOWNSHIP 20 SOUTH, RANGE 34 EAST, N.M.P.M. LEA COUNTY, NEW MEXICO

Survey Date: 7/14/15	CAD Date: 7/29/15	Drawn By: ACK
W.O. No.: 15110714	Rev.:	Rel. W.O.:

Sheet 1 of 1



DESCRIPTION

A STRIP OF LAND 30.0 FEET WIDE CROSSING STATE OF NEW MEXICO LAND IN SECTION 5, TOWNSHIP 21 SOUTH, RANGE 33 EAST, N.M.P.M., LEA COUNTY, NEW MEXICO, AND BEING 15.0 FEET LEFT AND 15.0 FEET RIGHT OF THE FOLLOWING DESCRIBED CENTERLINE SURVEY:

BEGINNING AT A POINT IN LOT 4 OF SAID SECTION 5, WHICH LIES S80°38'28\"W 5307.3 FEET FROM THE NORTHEAST CORNER OF SAID SECTION; THEN N08°49'08\"W 139.8 FEET TO A POINT ON THE WEST LINE OF SAID SECTION, WHICH LIES S00°25'18\"E 689.8 FEET FROM THE NORTHWEST CORNER.

SAID STRIP OF LAND BEING 139.8 FEET OR 8.47 RODS IN LENGTH, CONTAINING 0.096 ACRES MORE OR LESS AND BEING ALLOCATED BY FORTIES AS FOLLOWS:

LOT 4 8.47 RODS OR 0.096 ACRES

6
CALC.

5

STATE

5

4

7

8

8

9
U.S. GLO "1913" B.C.

NOTE

1) BEARINGS SHOWN HEREON ARE MERCATOR GRID AND CONFORM TO THE NEW MEXICO COORDINATE SYSTEM "NEW MEXICO EAST ZONE" NORTH AMERICAN DATUM 1983. DISTANCES ARE SURFACE VALUES.

2) LATITUDE AND LONGITUDE VALUES SHOWN HEREON ARE RELATIVE TO THE NORTH AMERICAN DATUM 1983 (NAD83).

I, RONALD J. EIDSON, NEW MEXICO PROFESSIONAL SURVEYOR No. 3239, DO HEREBY CERTIFY THAT THIS SURVEY PLAN AND THE ACTUAL SURVEY ON THE GROUND UPON WHICH IT IS BASED WERE PERFORMED BY ME OR UNDER MY DIRECT SUPERVISION AND I AM RESPONSIBLE FOR THIS SURVEY; THAT THIS SURVEY MEETS THE MINIMUM STANDARDS FOR SURVEYING IN NEW MEXICO; AND THAT IT IS TRUE AND CORRECT TO THE BEST OF MY KNOWLEDGE AND BELIEF.

RONALD J. EIDSON

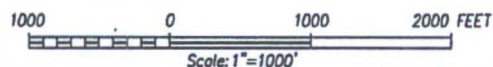
DATE: 3/14/2016



PROVIDING SURVEYING SERVICES
SINCE 1946
JOHN WEST SURVEYING COMPANY
412 N. DAL PASO HOBBS, N.M. 88240
(575) 393-3117 www.jwsc.biz
TBPLS# 10021000

LEGEND

⊙ DENOTES FOUND CORNER AS NOTED



XTO ENERGY

SURVEY FOR AN ELECTRIC LINE TO THE
SEVERUS 31 FEDERAL #1H & #2H AND FACILITY
SITE CROSSING SECTION 5,
TOWNSHIP 21 SOUTH, RANGE 33 EAST, N.M.P.M.
LEA COUNTY, NEW MEXICO

Survey Date: 2/17/16

CAD Date: 3/14/16

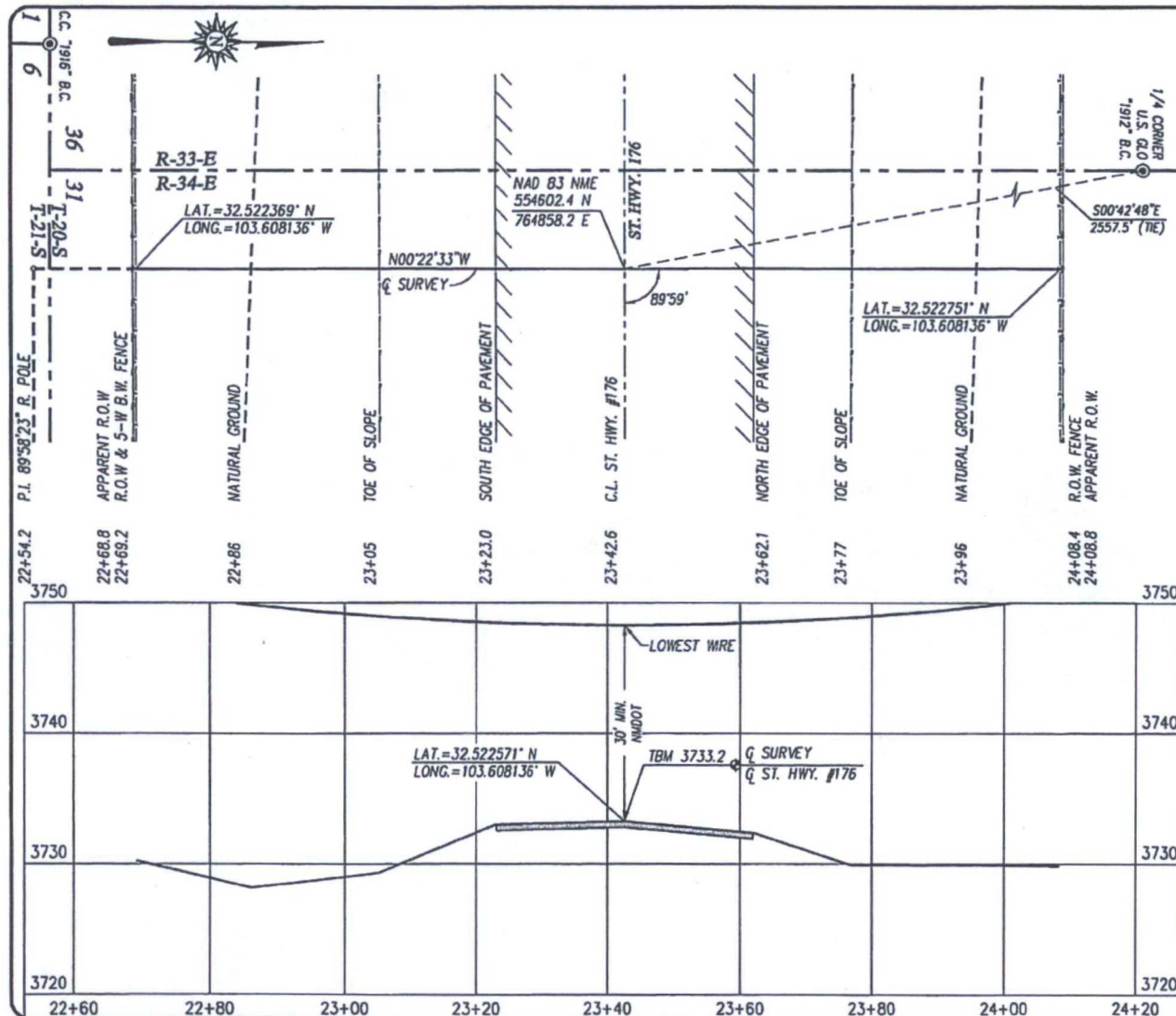
Drawn By: ACK

W.O. No.: 16110133

Rev. :

Rel. W.O.:

Sheet 1 of 1



HWY. PROJECT NO. _____
 DISTRICT UTILITY PERMIT NUMBER: _____
 DATE OF COMPLETION OF SURVEY: 2/20/16
 EQUIPMENT: TRIMBLE 5700 RTK GPS
 REFERENCE MARKS: JWSC OPUS PT.
"FISKE"
 GROUND TO GRID COMBINED SCALE FACTOR: 0.9997864472

NOTE:
 BEARINGS AND COORDINATE VALUES SHOWN HEREON ARE MERCATOR GRID
 AND CONFORM TO THE NEW MEXICO COORDINATE SYSTEM "NEW MEXICO
 EAST ZONE", NORTH AMERICAN DATUM OF 1983. DISTANCES ARE SURFACE
 VALUES. ELEVATIONS ARE RELATIVE TO THE NORTH AMERICAN VERTICAL
 DATUM 1988 (GEOID 2003).



I, RONALD J. EIDSON, NEW MEXICO PROFESSIONAL SURVEYOR No. 3239,
 DO HEREBY CERTIFY THAT THIS SURVEY PLAT AND THE ACTUAL SURVEY ON
 THE GROUND UPON WHICH IT IS BASED WERE PERFORMED BY ME OR UNDER MY
 DIRECT SUPERVISION; THAT I AM RESPONSIBLE FOR THIS SURVEY; THAT THIS
 SURVEY MEETS THE MINIMUM STANDARDS FOR SURVEYING IN NEW MEXICO; AND
 THAT IT IS TRUE AND CORRECT TO THE BEST OF MY KNOWLEDGE AND BELIEF.

RONALD J. EIDSON Ronald J. Eidson
 DATE: 3/14/2016

XTO ENERGY

AN ELECTRIC LINE CROSSING OVER
 ST. HWY. #176 IN SECTION 6, TOWNSHIP 21 SOUTH,
 RANGE 33 EAST & SECTION 31, TOWNSHIP 20 SOUTH,
 RANGE 34 EAST, N.M.P.M., LEA COUNTY, NEW MEXICO

PROVIDING SURVEYING SERVICES
 SINCE 1946
JOHN WEST SURVEYING COMPANY
 412 N. DAL PASO HOBBS, N.M. 88240
 (575) 393-3117 www.jwsc.biz
 TBPLS# 10021000

SCALE
 HORZ.: 1"=20'
 VERT.: 1"=10'
 Drawn By: ACK
 Date: 2/17/16
 W.O. No.: 16110133