

DISTRICT I
1625 N. French Dr., Hobbs, NM 88240
Phone (575) 393-6161 Fax: (575) 393-0720

DISTRICT II
811 S. First St., Artesia, NM 88210
Phone (575) 748-1283 Fax: (575) 748-0720

DISTRICT III
1000 Rio Brazos Rd., Aztec, NM 87410
Phone (505) 334-6178 Fax: (505) 334-6170

DISTRICT IV
1220 S. St. Francis Dr., Santa Fe, NM 87505
Phone (505) 476-3460 Fax: (505) 476-3462

State of New Mexico
Energy, Minerals and Natural Resources Department

Form C-102
Revised August 4, 2011

Submit one copy to appropriate
District Office

OIL CONSERVATION DIVISION
1220 South St. Francis Dr.
Santa Fe, New Mexico 87505

☐ AMENDED REPORT

WELL LOCATION AND ACREAGE DEDICATION PLAT

| | | |
|-----------------------------------|---|---|
| API Number 30-025-47420 | Pool Code 96994 | Pool Name PITCHFOAK RANCH; WOLF CAMP, SOUTH |
| Property Code 316806 | Property Name OCOTILLO SUNRISE "15" | Well Number 2H |
| OGRID No. 371502 | Operator Name SANTO OPERATING, LLC | Elevation 3343' |

Surface Location

| UL or lot No. | Section | Township | Range | Lot Idn | Feet from the | SOUTH/South line | Feet from the | East/West line | County |
|---------------|---------|----------|-------|---------|---------------|------------------|---------------|----------------|--------|
| P | 15 | 25 S | 34 E | | 330 | SOUTH | 1316 | EAST | LEA |

Bottom Hole Location If Different From Surface

| UL or lot No. | Section | Township | Range | Lot Idn | Feet from the | SOUTH/South line | Feet from the | East/West line | County |
|-----------------|---------|-----------------|--------------------|---------|---------------|------------------|---------------|----------------|--------|
| A | 15 | 25 S | 34 E | | 225 | NORTH | 1316 | EAST | LEA |
| Dedicated Acres | | Joint or Infill | Consolidation Code | | Order No. | | | | |

NO ALLOWABLE WILL BE ASSIGNED TO THIS COMPLETION UNTIL ALL INTERESTS HAVE BEEN CONSOLIDATED
OR A NON-STANDARD UNIT HAS BEEN APPROVED BY THE DIVISION

| | | | | | |
|--|--|--|--|--|--|
| <p>N.: 414941.2 E.: 809698.6 (NAD83)</p> | | <p>PROPOSED BOTTOM HOLE LOCATION Lat - N 32°08'13.74" Long - W 103°27'12.79" NMSPCE- N 414743.1 E 813657.3 (NAD-83)</p> | | <p>N.: 414977.5 E.: 814970.6</p> | |
| <p>N.: 412300.4 E.: 809715.9 (NAD83)</p> | | <p>LOWER MOST PERFORATION Lat - N 32°08'12.70" Long - W 103°27'12.82" NMSPCE- N 414637.8 E 813655.1 (NAD-83)</p> | | | |
| <p>N.: 409662.1 E.: 809732.3 (NAD83)</p> | | <p>UPPER MOST PERFORATION Lat - N 32°07'27.73" Long - W 103°27'12.79" NMSPCE- N 410093.5 E 813694.9 (NAD-83)</p> | | | |
| <p>N.: 409662.1 E.: 809732.3 (NAD83)</p> | | <p>SURFACE LOCATION Lat - N 32°07'26.99" Long - W 103°27'12.79" NMSPCE- N 410018.5 E 813695.7 (NAD-83)</p> | | <p>N.: 409696.5 E.: 815014.2 (NAD83)</p> | |

OPERATOR CERTIFICATION

I hereby certify that the information contained herein is true and complete to the best of my knowledge and belief, and that this organization either owns a working interest or unleased mineral interest in the land including the proposed bottom hole location or has a right to drill this well at this location pursuant to a contract with an owner of such a mineral or working interest, or to a voluntary pooling agreement or a compulsory pooling order heretofore entered by the division.

Signature _____ Date _____

Printed Name _____

Email Address _____

SURVEYOR CERTIFICATION

I hereby certify that the well location shown on this plat was plotted from field notes of actual surveys made by me or under my supervision, and that the same is true and correct to the best of my belief.

DATE SURVEYED: **AUGUST 17, 2017**

Date Surveyed _____

Signature & Seal of Professional Surveyor **7977**

Certified Professional Land Surveyor **7977**

SCALE: 1" = 2000'

WO Num.: 32412

SECTION 15, TOWNSHIP 25 SOUTH, RANGE 34 EAST. N.M.P.M.,
LEA COUNTY, NEW MEXICO.



Battle Axe Road
5.6 miles to Hwy 128

Lease Road

SANTO OPERATING, LLC
OCOTILLO SUNRISE "15" #2H
ELEV. - 3436'

Lat - N 32°07'26.99"
Long - W 103°27'12.79"
NMSPCE- N 410018.5
E 813695.7
(NAD-83)

○
WELL BORE

28' 4610' 560'
Proposed Lease Road

JAL, NM IS ±15 MILES TO THE EAST OF LOCATION.

200 0 200 400 FEET



SCALE: 1" = 200'

Directions to Location:

FROM THE JUNCTION OF STATE HWY 128 AND
BATTLE AXE ROAD, GO SOUTHWESTERLY ON BATTLE
AXE ROAD FOR 5.6 MILES TO LEASE ROAD; THENCE
SOUTHEAST ON LEASE ROAD FOR 1.5 MILES TO
PROPOSED LEASE ROAD.



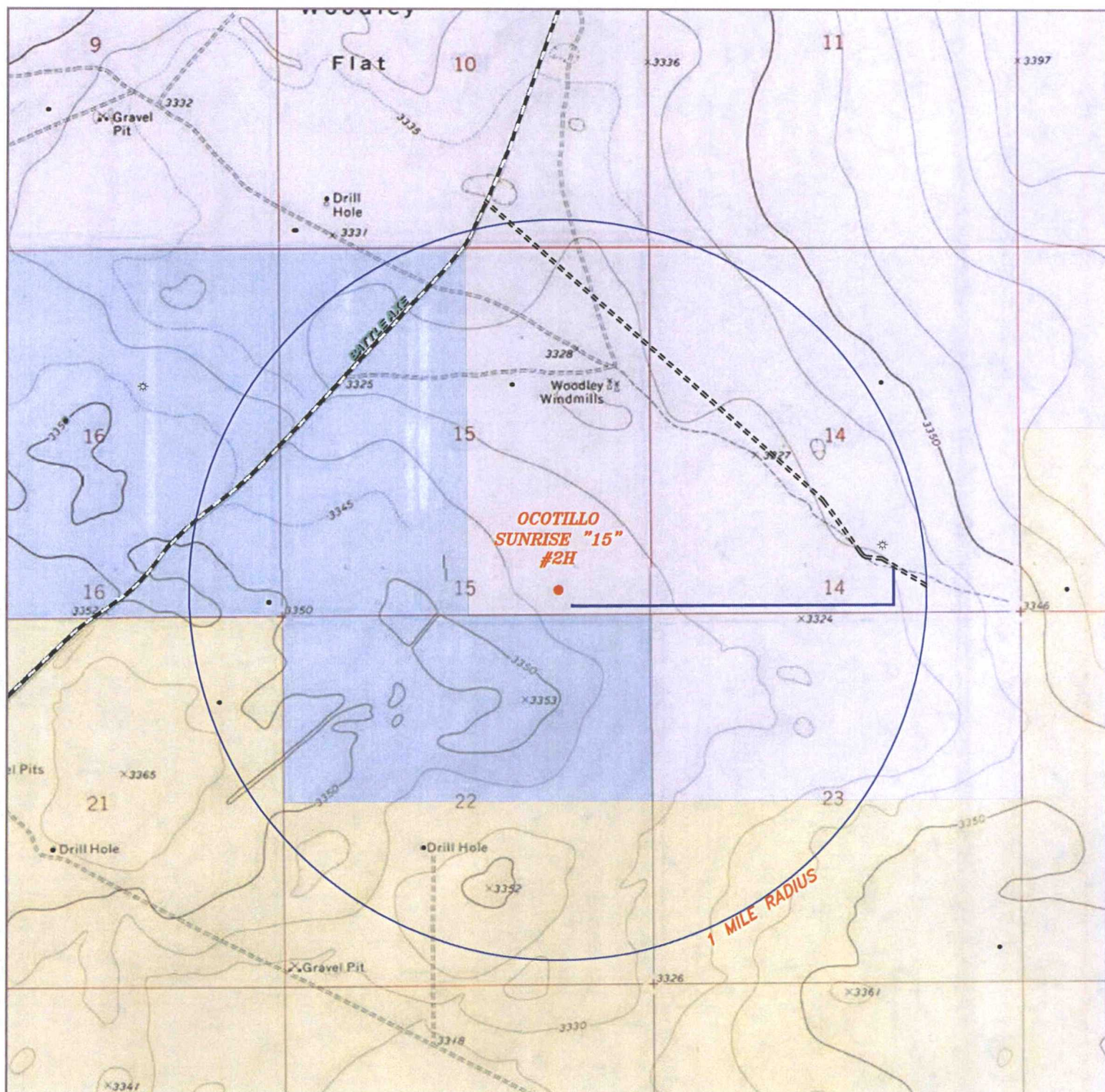
P.O. Box 1786 (575) 393-7316 - Office
1120 N. West County Rd. (575) 392-2206 - Fax
Hobbs, New Mexico 88241 basinsurveys.com

SANTO OPERATING, LLC

REF: OCOTILLO SUNRISE "15" #2H / WELL PAD TOPO

THE OCOTILLO SUNRISE "15" #2H LOCATED 330' FROM
THE SOUTH LINE AND 1316' FROM THE EAST LINE OF
SECTION 15, TOWNSHIP 25 SOUTH, RANGE 34 EAST.

N.M.P.M., LEA COUNTY, NEW MEXICO.



OCOTILLO SUNRISE "15" #2H

Located 330' FSL and 1316' FEL
 Section 15, Township 25 South, Range 34 East,
 N.M.P.M., Lea County, New Mexico.

basin
surveys
 focused on excellence
 in the oilfield

P.O. Box 1786
 1120 N. West County Rd.
 Hobbs, New Mexico 88241
 (575) 393-7316 - Office
 (575) 392-2206 - Fax
 basinsurveys.com

0' 1000' 2000' 3000' 150'0"
 SCALE: 1" = 2000'

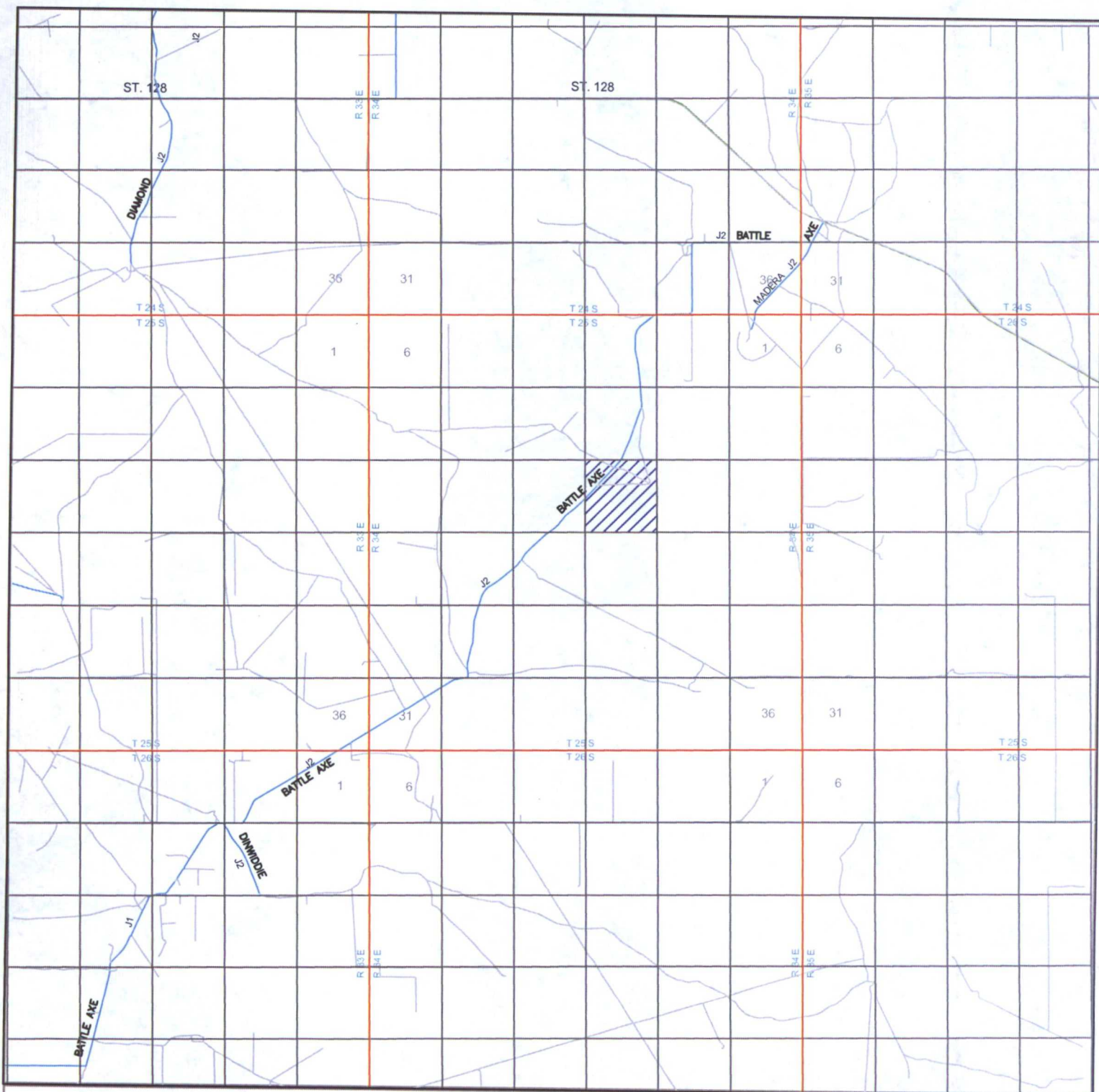
W.O. Number: KJG 32412

Survey Date: 08-17-2016

YELLOW TINT - USA LAND
 BLUE TINT - STATE LAND
 NATURAL COLOR - FEE LAND



SANTO



OCOTILLO SUNRISE "15" #2H

Located 330' FSL and 1316' FEL
 Section 15, Township 25 South, Range 34 East,
 N.M.P.M., Lea County, New Mexico.

basin
surveys

focused on excellence
 in the oilfield

P.O. Box 1786
 1120 N. West County Rd.
 Hobbs, New Mexico 88241
 (575) 393-7316 - Office
 (575) 392-2206 - Fax
 basin-surveys.com

0 1 MI 2 MI 3 MI 4 MI
 SCALE: 1" = 2 MILES

W.O. Number: KJG 32412

Survey Date: 08-17-2016

YELLOW TINT - USA LAND
 BLUE TINT - STATE LAND
 NATURAL COLOR - FEE LAND



SANTO



OCOTILLO SUNRISE "15" #2H

Located 330' FSL and 1316' FEL
Section 15, Township 25 South, Range 34 East,
N.M.P.M., Lea County, New Mexico.

basin
surveys
focused on excellence
in the oilfield

P.O. Box 1786
1120 N. West County Rd.
Hobbs, New Mexico 88241
(575) 393-7316 - Office
(575) 392-2206 - Fax
basinsurveys.com

0' 1000' 2000' 3000' 1500'
SCALE: 1" = 2000'

W.O. Number: KJG 32412

Survey Date: 08-17-2016

YELLOW TINT - USA LAND
BLUE TINT - STATE LAND
NATURAL COLOR - FEE LAND



SANTO