

**DISTRICT IV**  
1220 S. ST. FRANCIS DR., SANTA FE, NM 87505  
Phone: (505) 476-3460 Fax: (505) 476-3462

170  
**RECEIVED**

1220 SOUTH ST. FRANCIS DR.  
Santa Fe, New Mexico 87505

Submit one copy to appropriate  
District Office

☐ AMENDED REPORT

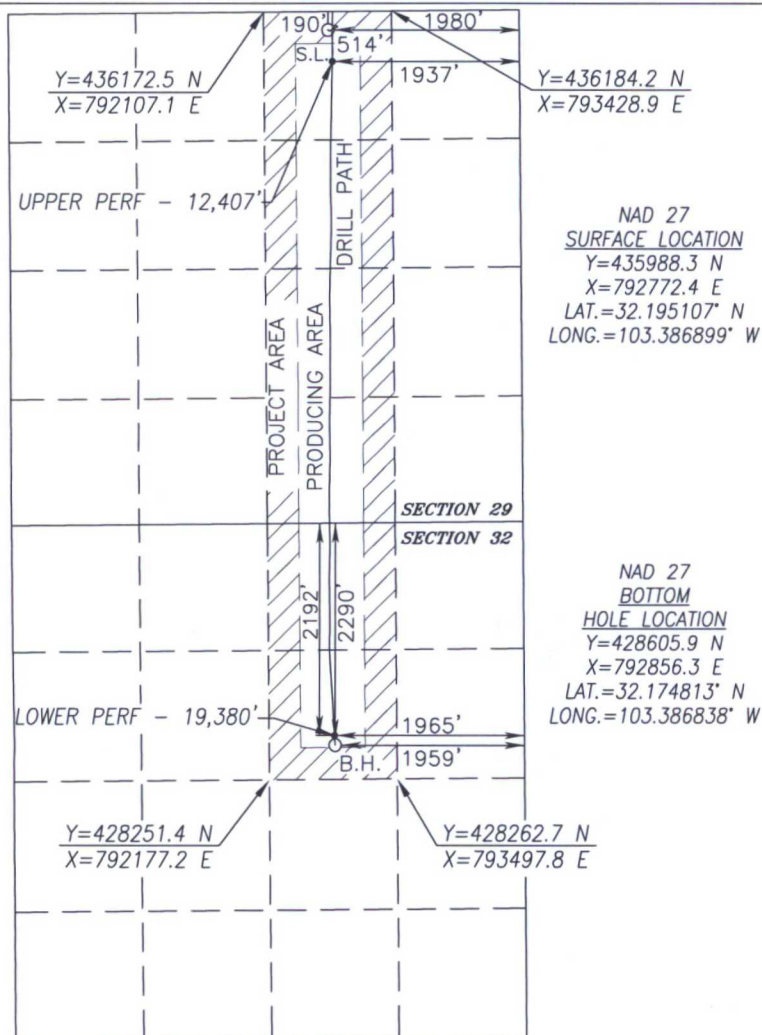
|                            |  |                    |   |
|----------------------------|--|--------------------|---|
| API Number<br>30-025-42783 |  | Pool Code<br>98098 | Pool Name<br>WC-025 G-09 S243532M; Wolfbone |
| Property Code<br>315251    | Property Name<br>VIKING HELMET STATE COM |                    | Well Number<br>2H                           |
| OGRID No.<br>229137        | Operator Name<br>COG OPERATING, LLC      |                    | Elevation<br>3320.4'                        |

| UL or lot No. | Section | Township | Range | Lot Idn | Feet from the | North/South line | Feet from the | East/West line | County |
|---------------|---------|----------|-------|---------|---------------|------------------|---------------|----------------|--------|
| B             | 29      | 24-S     | 35-E  |         | 190           | NORTH            | 1980          | EAST           | LEA    |


| UL or lot No. | Section | Township | Range | Lot Idn | Feet from the | North/South line | Feet from the | East/West line | County |
|---------------|---------|----------|-------|---------|---------------|------------------|---------------|----------------|--------|
| G             | 32      | 24-S     | 35-E  |         | 2290          | NORTH            | 1959          | EAST           | LEA    |

|                 |                 |                    |           |
|-----------------|-----------------|--------------------|-----------|
| Dedicated Acres | Joint or Infill | Consolidation Code | Order No. |
| 240             |                 |                    |           |

**BOREPATH SHOWN  
HEREON IS BASED ON  
DIRECTIONAL SURVEY  
REPORT PROVIDED BY COG  
OPERATING, LLC FOR THE  
VIKING HELMET STATE  
COM #2H SUPPLIED TO  
HARCROW SURVEYING, LLC  
ON JULY 14, 2016.**



*I hereby certify that the information herein is true and complete to the best of my knowledge and belief, and that this organization either owns a working interest or unleased mineral interest in the land including the proposed bottom hole location or has a right to drill this well at this location pursuant to a contract with an owner of such mineral or working interest, or to a voluntary pooling agreement or a compulsory pooling order heretofore entered by the division.*

 8/16/16  
Signature Date

Stormi Davis

---

Printed Name

sdavis@concho.com

---

E-mail Address

I hereby certify that the well location shown on this plat was plotted from field notes of actual surveys made by me or under my supervision, and that the same is true and correct to the best of my belief.

JUNE 19, 2015/JAN. 3, 2016  
Date of Survey/Date of Geographic Survey

Signature &amp; Seal of Professional Surveyor



Certificate No. CHAD HARCROW 17777  
W.O. #16-574 DRAWN BY: CF