

DISTRICT I  
1625 N. French Dr., Hobbs, NM 88240  
Phone (505) 393-8181 Fax: (505) 393-0720  
DISTRICT II  
811 S. First St., Artesia, NM 88210  
Phone (505) 748-1283 Fax: (505) 748-9720  
DISTRICT III  
1000 Rio Brazos Rd., Aztec, NM 87410  
Phone (505) 334-6178 Fax: (505) 334-6170  
DISTRICT IV  
1220 S. St. Francis Dr., Santa Fe, NM 87505  
Phone (505) 476-3460 Fax: (505) 476-3462

State of New Mexico  
Energy, Minerals and Natural Resources Department

Form C-102  
Revised August 12, 2011

Submit one copy to appropriate  
District Office

OIL CONSERVATION DIVISION  
1220 South St. Francis Dr.  
Santa Fe, New Mexico 87505

WELL LOCATION AND ACREAGE DEDICATION PLAT

☐ AMENDED REPORT

API Number <b>30-025-43436</b>	Pool Code <b>2205</b>	Pool Name <b>ANTELOPE RIDGE; Bone Spring, NORTH</b>
Property Code <b>316241</b>	Property Name <b>VERMINATOR BWV STATE COM</b>	Well Number <b>1H</b>
OGRID No. <b>025575</b>	Operator Name <b>YATES PETROLEUM CORPORATION</b>	Elevation <b>3341'</b>

Surface Location

UL or lot No.	Section	Township	Range	Lot Idn	Feet from the	SOUTH/South line	Feet from the	East/West line	County
N	7	23 S	35 E		75	SOUTH	1980	WEST	LEA

Bottom Hole Location If Different From Surface

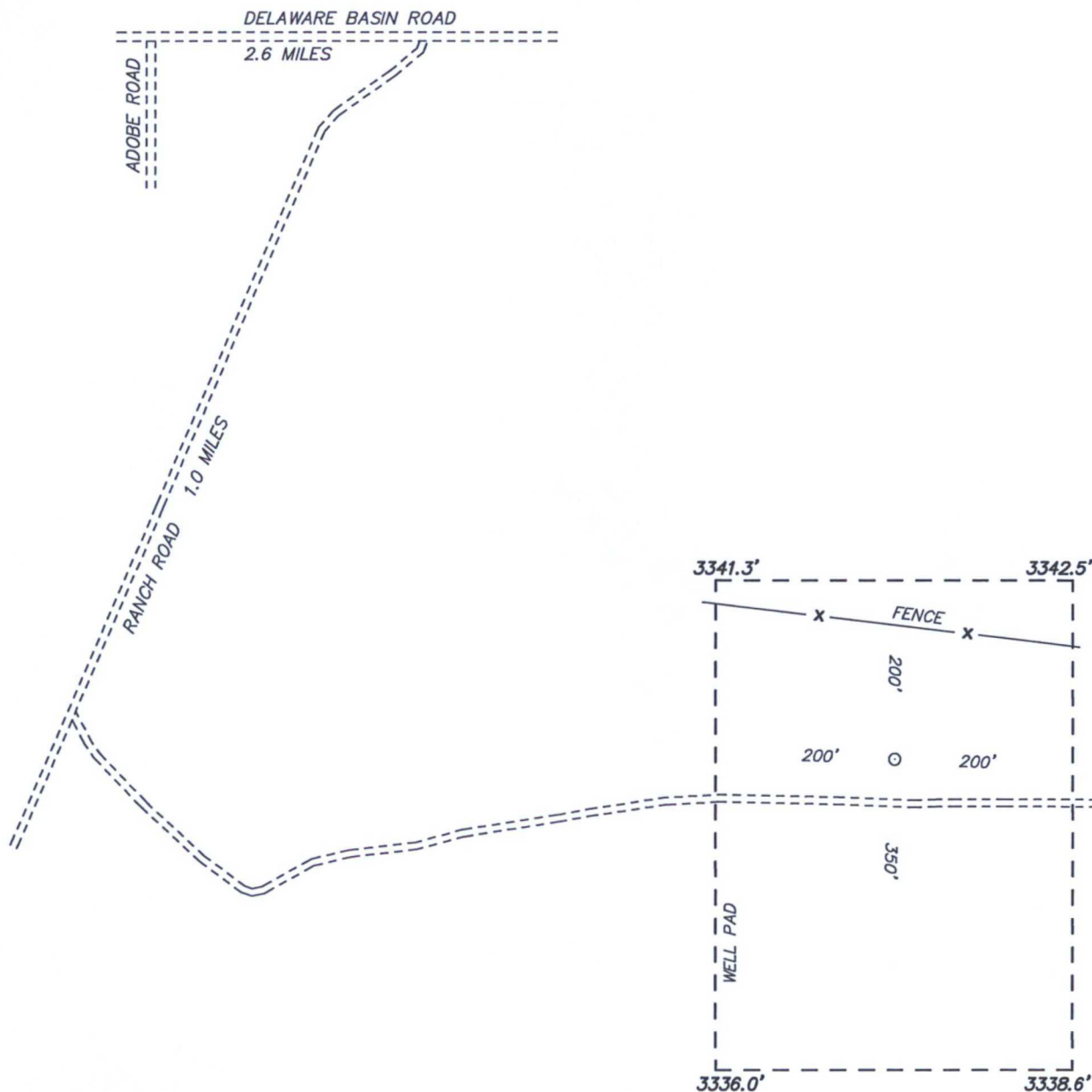
UL or lot No.	Section	Township	Range	Lot Idn	Feet from the	SOUTH/South line	Feet from the	East/West line	County
K	6	23 S	35 E		2310	SOUTH	1980	WEST	LEA

Dedicated Acres	Joint or Infill	Consolidation Code	Order No.
240			

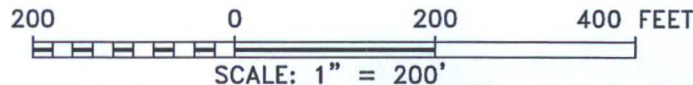
NO ALLOWABLE WILL BE ASSIGNED TO THIS COMPLETION UNTIL ALL INTERESTS HAVE BEEN CONSOLIDATED  
OR A NON-STANDARD UNIT HAS BEEN APPROVED BY THE DIVISION

<p>N: 488969.9 E: 824889.6 (NAD83)</p> <p>N: 486344.0 E: 826217.3 (NAD83)</p> <p>N: 486329.8 E: 824912.5 (NAD83)</p> <p>N: 483701.4 E: 826239.8 (NAD83)</p> <p>N: 483713.7 E: 827559.7 (NAD83)</p> <p>N: 483738.3 E: 830199.6 (NAD83)</p> <p>N: 481046.5 E: 824958.9 (NAD83)</p> <p>N: 478403.8 E: 824982.6 (NAD83)</p>	<p>PROPOSED BOTTOM HOLE LOCATION Lat - N 32°19'57.88" Long - W 103°24'31.69" NMSPCE- N 486017.2 E 826896.2 (NAD-83)</p> <p>Producing Zone: →</p> <p>Designated Area: →</p> <p>SURFACE LOCATION Lat - N 32°18'43.51" Long - W 103°24'31.69" NMSPCE- N 478500.9 E 826961.6 (NAD-83)</p> <p>Penetration Point: 561' FSL &amp; 1980' FWL</p>	<p>N: 489023.7 E: 830154.6 (NAD83)</p> <p>N: 486355.5 E: 827537.2 (NAD83)</p> <p>N: 483713.7 E: 827559.7 (NAD83)</p>	<p>OPERATOR CERTIFICATION</p> <p>I hereby certify that the information contained herein is true and complete to the best of my knowledge and belief, and that this organization either owns a working interest or unLEASEd mineral interest in the land including the proposed bottom hole location or has a right to drill this well at this location pursuant to a contract with an owner of such a mineral or working interest, or to a voluntary pooling agreement or a compulsory pooling order heretofore entered by the division.</p> <p><u>Travis Hahn</u> 1/5/16 Signature Date</p> <p>Travis Hahn Printed Name</p> <p>thahn@yatespetroleum.com Email Address</p> <p>SURVEYOR CERTIFICATION</p> <p>I hereby certify that the well location shown on this plat was plotted from field notes of actual surveys made by me or under my supervision, and that the same is true and correct to the best of my belief.</p> <p>DECEMBER 2015 Date Surveyed</p> <p>Signature &amp; Seal of Professional Surveyor 7977</p> <p>Certificate No. 7977 GARY L. JONES BASIC SURVEYOR</p> <p>0' 500' 1000' 1500' 2000' SCALE: 1" = 2000' WO Num.: 32065</p>
---	--	--	---

SECTION 7, TOWNSHIP 23 SOUTH, RANGE 35 EAST. N.M.P.M.,  
LEA COUNTY, NEW MEXICO.



EUNICE, NM IS  $\pm 17$  MILES TO THE NORTHEAST OF LOCATION.



YATES PETROLEUM CORPORATION  
VERMINATOR BWV STATE #1H  
ELEV. - 3341'  
Lat - N 32°18'43.51"  
Long - W 103°24'31.69"  
NMSPCE- N 478500.9  
E 826961.6  
(NAD-83)

basin  
surveys

focused on excellence  
in the oilfield

P.O. Box 1786  
1120 N. West County Rd.  
Hobbs, New Mexico 88241

(575) 393-7316 - Office  
(575) 392-2206 - Fax  
basinsurveys.com



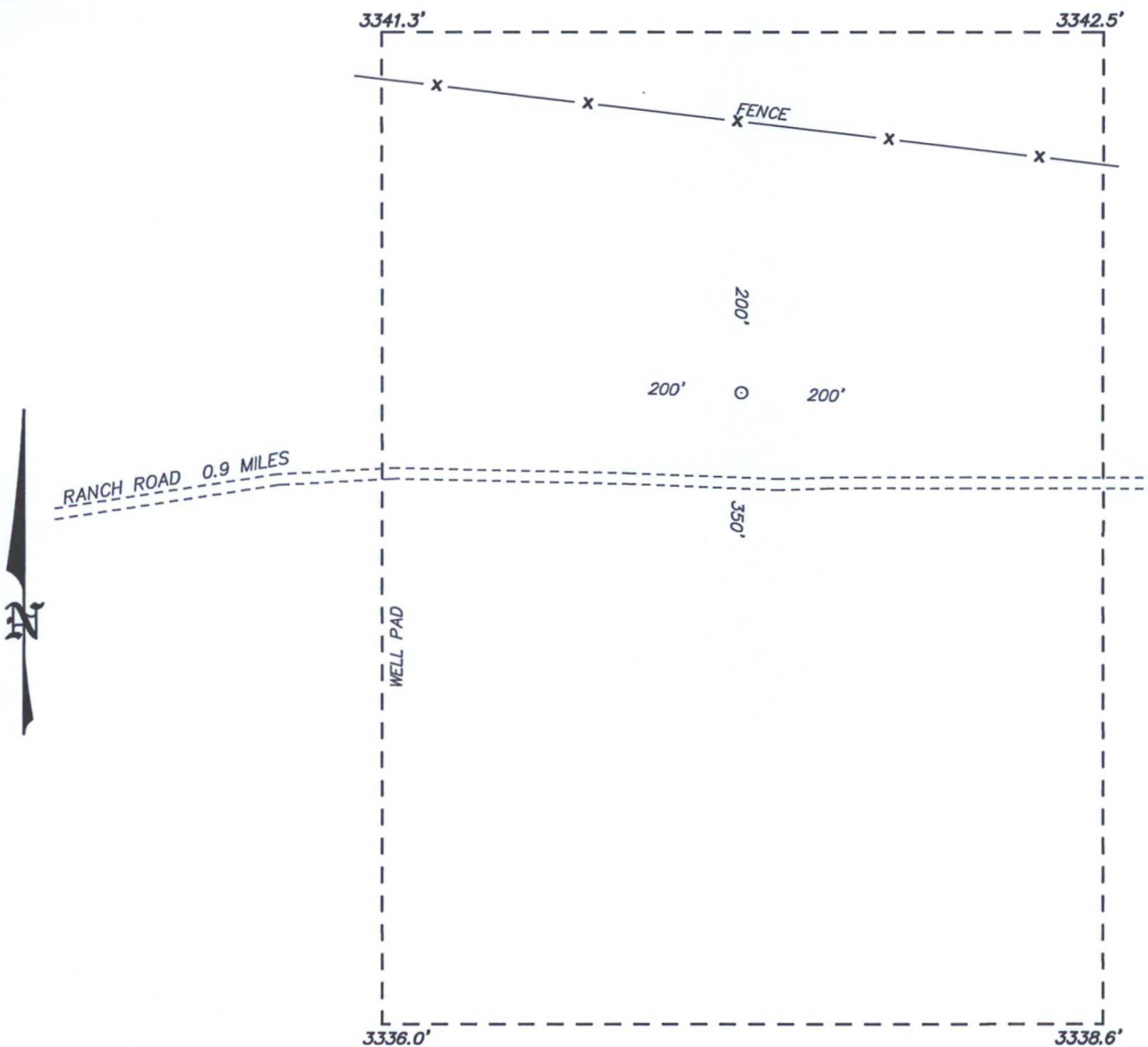
REF: VERMINATOR BWV STATE COM 1H/ WELL PAD TOPO

THE VERMINATOR BWV STATE COM 1H LOCATED 75' FROM  
THE SOUTH LINE AND 1980' FROM THE WEST LINE OF  
SECTION 7, TOWNSHIP 23 SOUTH, RANGE 35 EAST.

N.M.P.M., LEA COUNTY, NEW MEXICO.



SECTION 7, TOWNSHIP 23 SOUTH, RANGE 35 EAST. N.M.P.M.,  
LEA COUNTY, NEW MEXICO.



100 0 100 200 FEET

SCALE: 1" = 150'



**YATES** PETROLEUM CORPORATION

REF: VERMINATOR BWV STATE COM 1H/ WELL PAD TOPO

THE VERMINATOR BWV STATE COM 1H LOCATED 75' FROM  
THE SOUTH LINE AND 1980' FROM THE WEST LINE OF  
SECTION 7, TOWNSHIP 23 SOUTH, RANGE 35 EAST.  
N.M.P.M., LEA COUNTY, NEW MEXICO.

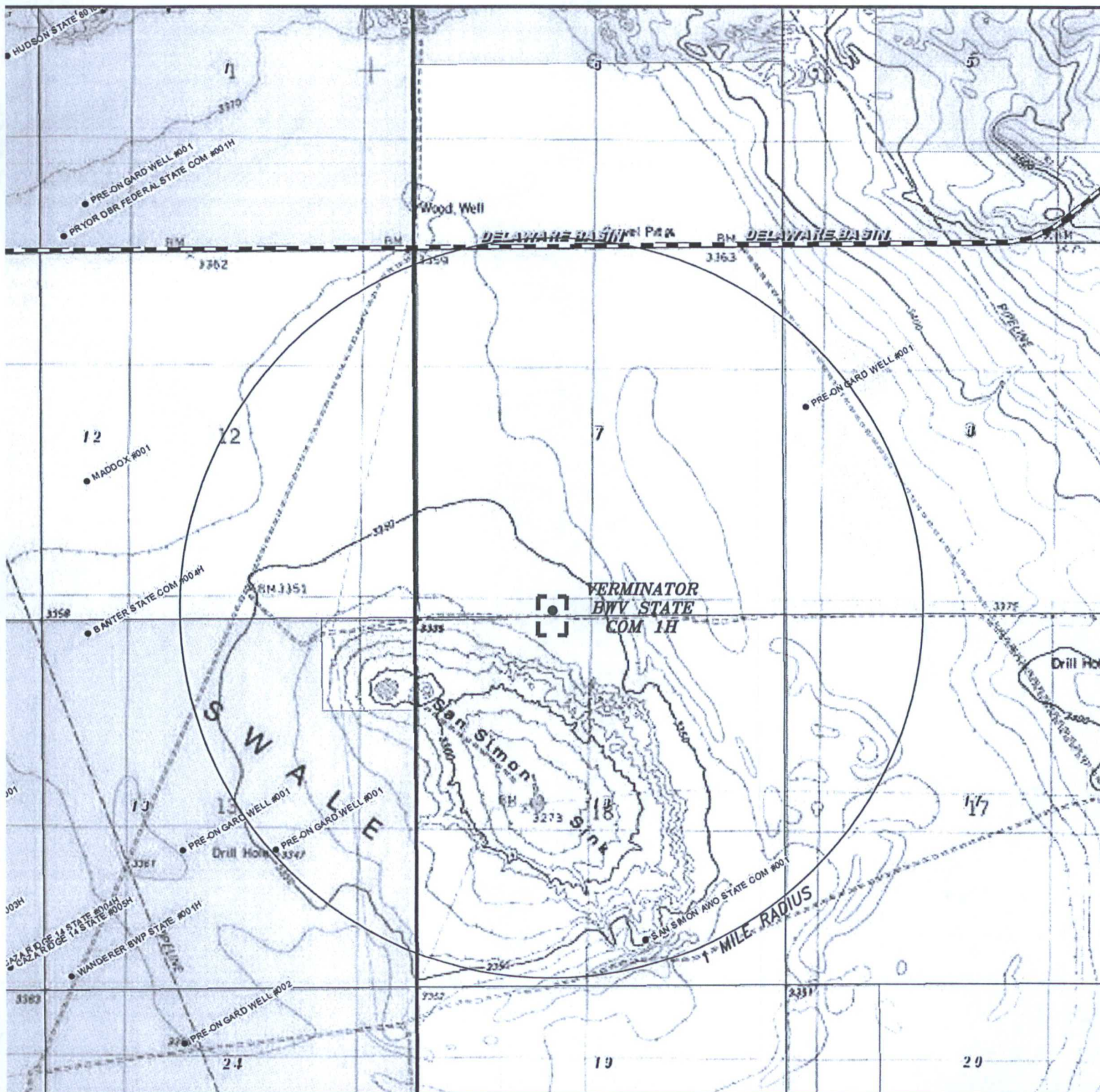
**basin**  
**surveys**

focused on excellence  
in the oilfield

P.O. Box 1786  
1120 N. West County Rd.  
Hobbs, New Mexico 88241

(575) 393-7316 - Office  
(575) 392-2206 - Fax  
basinsurveys.com

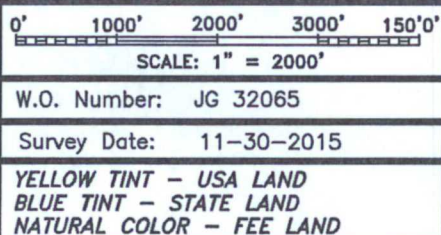
W.O. Number: 32065 | Drawn By: J GOAD | Date: 12-3-2015 | Survey Date: 11-30-2015 | Sheet 1 of 1 Sheets



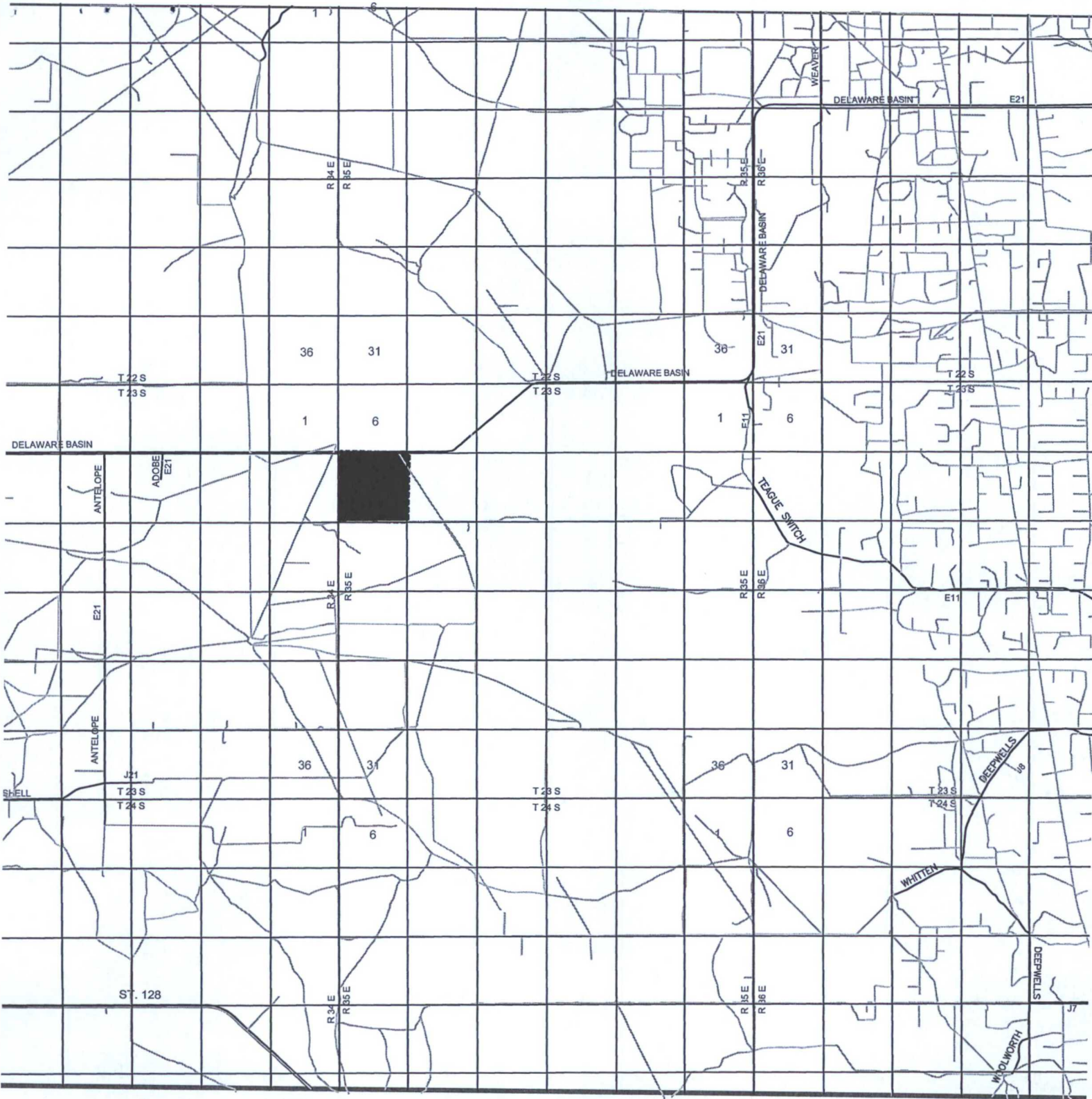
VERMINATOR BWV STATE COM 1H  
 Located 75' FSL and 1980' FWL  
 Section 7 Township 23 South, Range 35 East,  
 N.M.P.M., Lea County, New Mexico.



P.O. Box 1786  
 1120 N. West County Rd.  
 Hobbs, New Mexico 88241  
 (575) 393-7316 - Office  
 (575) 392-2206 - Fax  
 basinsurveys.com







VERMINATOR BWV STATE COM 1H  
 Located 75' FSL and 1980' FWL  
 Section 7 Township 23 South, Range 35 East,  
 N.M.P.M., Lea County, New Mexico.

**basin**  
**surveys**  
 focused on excellence  
 in the oilfield

P.O. Box 1786  
 1120 N. West County Rd.  
 Hobbs, New Mexico 88241  
 (575) 393-7316 - Office  
 (575) 392-2206 - Fax  
 basinsurveys.com

0 1 MI 2 MI 3 MI 4 MI

SCALE: 1" = 2 MILES

W.O. Number: JG 32065

Survey Date: 11-30-2015

YELLOW TINT - USA LAND  
 BLUE TINT - STATE LAND  
 NATURAL COLOR - FEE LAND









