

District I
1625 N. French Dr., Hobbs, NM 88240
Phone: (575) 393-6161 Fax: (575) 393-0720
District II
811 S. First St., Artesia, NM 88210
Phone: (575) 748-1283 Fax: (575) 748-9720
District III
1000 Rio Brazos Road, Aztec, NM 87410
Phone: (505) 334-6178 Fax: (505) 334-6170
District IV
1220 S. St. Francis Dr., Santa Fe, NM 87505
Phone: (505) 476-3460 Fax: (505) 476-3462

State of New Mexico
Energy, Minerals & Natural Resources Department
OIL CONSERVATION DIVISION
1220 South St. Francis Dr.
Santa Fe, NM 87505

Form C-102
Revised August 1, 2011
Submit one copy to appropriate
District Office

☐ AMENDED REPORT

WELL LOCATION AND ACREAGE DEDICATION PLAT

¹ API Number 30-025-43438	² Pool Code 14805	³ Pool Name Cruz, Bone Spring
⁴ Property Code 4047	⁵ Property Name JAGUAR 18 STATE	
⁷ OGRID No. 270329	⁸ Operator Name ENDURANCE RESOURCES, LLC	⁶ Well Number 4H
		⁹ Elevation 3713.1

¹⁰ Surface Location

UL or lot no.	Section	Township	Range	Lot Idn	Feet from the	North/South line	Feet from the	East/West line	County
A	18	23 S	33 E		330	NORTH	660	EAST	LEA

¹¹ Bottom Hole Location If Different From Surface

UL or lot no.	Section	Township	Range	Lot Idn	Feet from the	North/South line	Feet from the	East/West line	County
P	18	23 S	33 E		330	SOUTH	660	EAST	LEA

¹² Dedicated Acres 160	¹³ Joint or Infill	¹⁴ Consolidation Code	¹⁵ Order No.
--------------------------------------	-------------------------------	----------------------------------	-------------------------

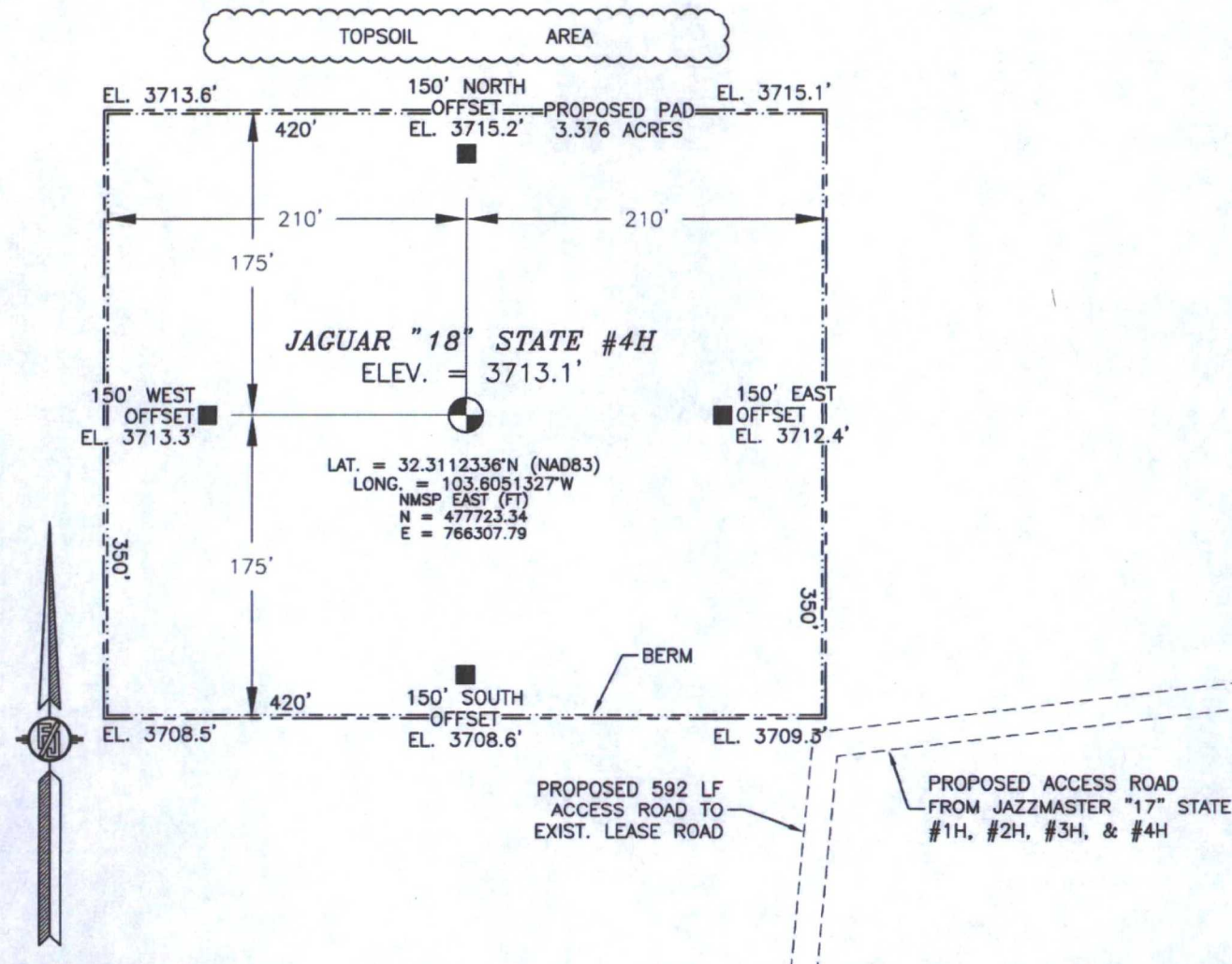
No allowable will be assigned to this completion until all interests have been consolidated or a non-standard unit has been approved by the division.

<p>N89°45'26"E 2603.80 FT</p> <p>NW CORNER SEC. 18 LAT. = 32.3121717°N LONG. = 103.6198502°W NMSP EAST (FT) N = 478034.05 E = 761758.59</p> <p>LOT 1</p> <p>LOT 2</p> <p>W Q CORNER SEC. 18 LAT. = 32.3049270°N LONG. = 103.6198485°W NMSP EAST (FT) N = 475398.44 E = 761776.64</p> <p>LOT 3</p> <p>NOTE: LATITUDE AND LONGITUDE COORDINATES ARE SHOWN USING THE NORTH AMERICAN DATUM OF 1983 (NAD83). LISTED NEW MEXICO STATE PLANE EAST COORDINATES ARE GRID (NAD83). BASIS OF BEARING AND DISTANCES USED ARE NEW MEXICO STATE PLANE EAST COORDINATES MODIFIED TO THE SURFACE.</p> <p>LOT 4</p> <p>SW CORNER SEC. 18 LAT. = 32.2976573°N LONG. = 103.6198477°W NMSP EAST (FT) N = 472753.76 E = 761794.48</p> <p>S Q CORNER SEC. 18 LAT. = 32.2976485°N LONG. = 103.6115248°W NMSP EAST (FT) N = 472767.77 E = 764366.22</p> <p>S89°41'16"W 2572.31 FT</p>		<p>N89°45'26"E 2603.80 FT</p> <p>NE CORNER SEC. 18 LAT. = 32.3121359°N LONG. = 103.6029979°W NMSP EAST (FT) N = 478056.11 E = 766965.07</p> <p>SURFACE LOCATION</p> <p>JAGUAR "18" STATE #4H ELEV. = 3713.1' LAT. = 32.3112336°N (NAD83) LONG. = 103.6051327°W NMSP EAST (FT) N = 477723.34 E = 766307.79</p> <p>BOTTOM OF HOLE LAT. = 32.2985551°N LONG. = 103.6051232°W NMSP EAST (FT) N = 473110.94 E = 766342.04</p> <p>BOTTOM OF HOLE</p> <p>SE CORNER SEC. 18 LAT. = 32.2976371°N LONG. = 103.6029777°W NMSP EAST (FT) N = 472781.48 E = 767007.27</p> <p>S89°42'09"W 2641.63 FT</p>	<p>¹⁷ OPERATOR CERTIFICATION</p> <p>I hereby certify that the information contained herein is true and complete to the best of my knowledge and belief, and that this organization either owns a working interest or unleased mineral interest in the land including the proposed bottom hole location or has a right to drill this well at this location pursuant to a contract with an owner of such a mineral or working interest, or to a voluntary pooling agreement or a compulsory pooling order heretofore entered by the division.</p> <p><i>Tinlee Tilton</i> 9/27/2016 Signature Date</p> <p>TINLEE TILTON Printed Name</p> <p>tinlee@endurance E-mail Address</p> <p>resourcesllc.com</p> <p>¹⁸ SURVEYOR CERTIFICATION</p> <p>I hereby certify that the well location shown on this plat was plotted from field notes of actual surveys made by me or under my supervision, and that the same is true and correct to the best of my belief.</p> <p>JULY 16, 2013 Date of Survey</p> <p><i>Frank Jaramillo</i> Signature and Seal of Professional Surveyor</p> <p>Certificate Number: 12797 FELIX MONT. JARAMILLO, PLS 12797 SURVEY NO. 2090</p>
---	--	--	---

SECTION 18, TOWNSHIP 23 SOUTH, RANGE 33 EAST, N.M.P.M.
LEA COUNTY, STATE OF NEW MEXICO
SITE MAP

NOTE: LATITUDE AND LONGITUDE COORDINATES ARE SHOWN USING THE NORTH AMERICAN DATUM OF 1983 (NAD83). LISTED NEW MEXICO STATE PLANE EAST COORDINATES ARE GRID (NAD83). BASIS OF BEARING AND DISTANCES USED ARE NEW MEXICO STATE PLANE EAST COORDINATES MODIFIED TO THE SURFACE

SEC. 7
SEC. 18



010 50 100 200
SCALE 1" = 100'

DIRECTIONS TO LOCATION

FROM THE INTERSECTION OF STATE HIGHWAY 128 AND DELAWARE BASIN ROAD GO NORTH ON DELAWARE BASIN ROAD APPROX. 6.0 MILE TO A LEASE ROAD ON LEFT (WEST) TURN WEST AT LEASE ROAD, GO APPROX. 5.35 MILES TO A LEASE ROAD ON RIGHT (NORTH) TURN NORTH GO APPROX. 0.86 MILES TO LOCATION.

PROPOSED 592 LF
ACCESS ROAD TO
EXIST. LEASE ROAD

PROPOSED ACCESS ROAD
FROM JAZZMASTER "17" STATE
#1H, #2H, #3H, & #4H

ENDURANCE RESOURCES, LLC
JAGUAR "18" STATE #4H
LOCATED 330 FT. FROM THE NORTH LINE
AND 660 FT. FROM THE EAST LINE OF
SECTION 18, TOWNSHIP 23 SOUTH,
RANGE 33 EAST, N.M.P.M.
LEA COUNTY, STATE OF NEW MEXICO

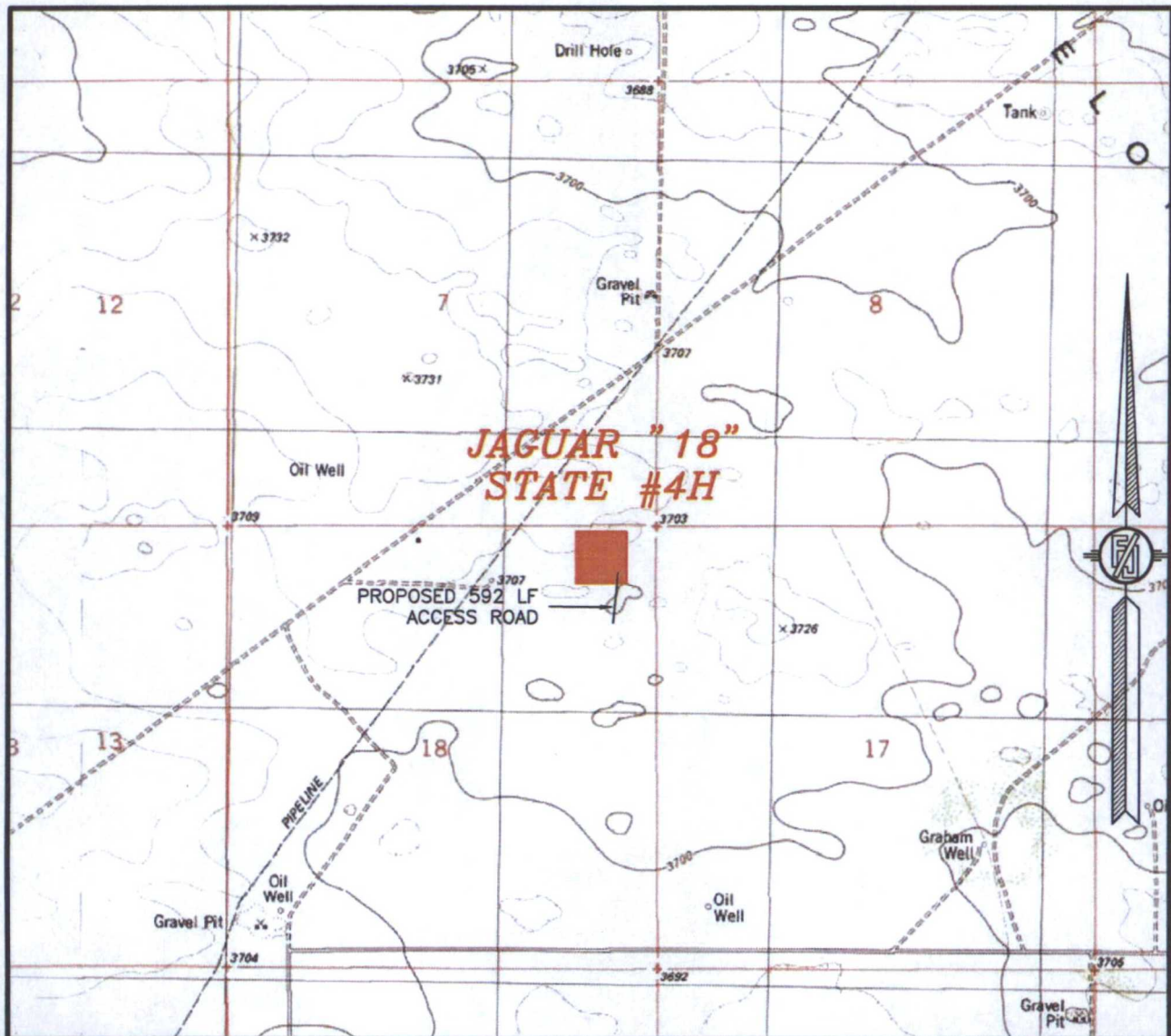
JULY 16, 2013

SURVEY NO. 2090

MADRON SURVEYING, INC. 301 SOUTH CANAL (575) 234-3341

CARLSBAD, NEW MEXICO

SECTION 18, TOWNSHIP 23 SOUTH, RANGE 33 EAST, N.M.P.M.
LEA COUNTY, STATE OF NEW MEXICO
LOCATION VERIFICATION MAP



USGS QUAD MAP:
TIP TOP WELLS

NOT TO SCALE

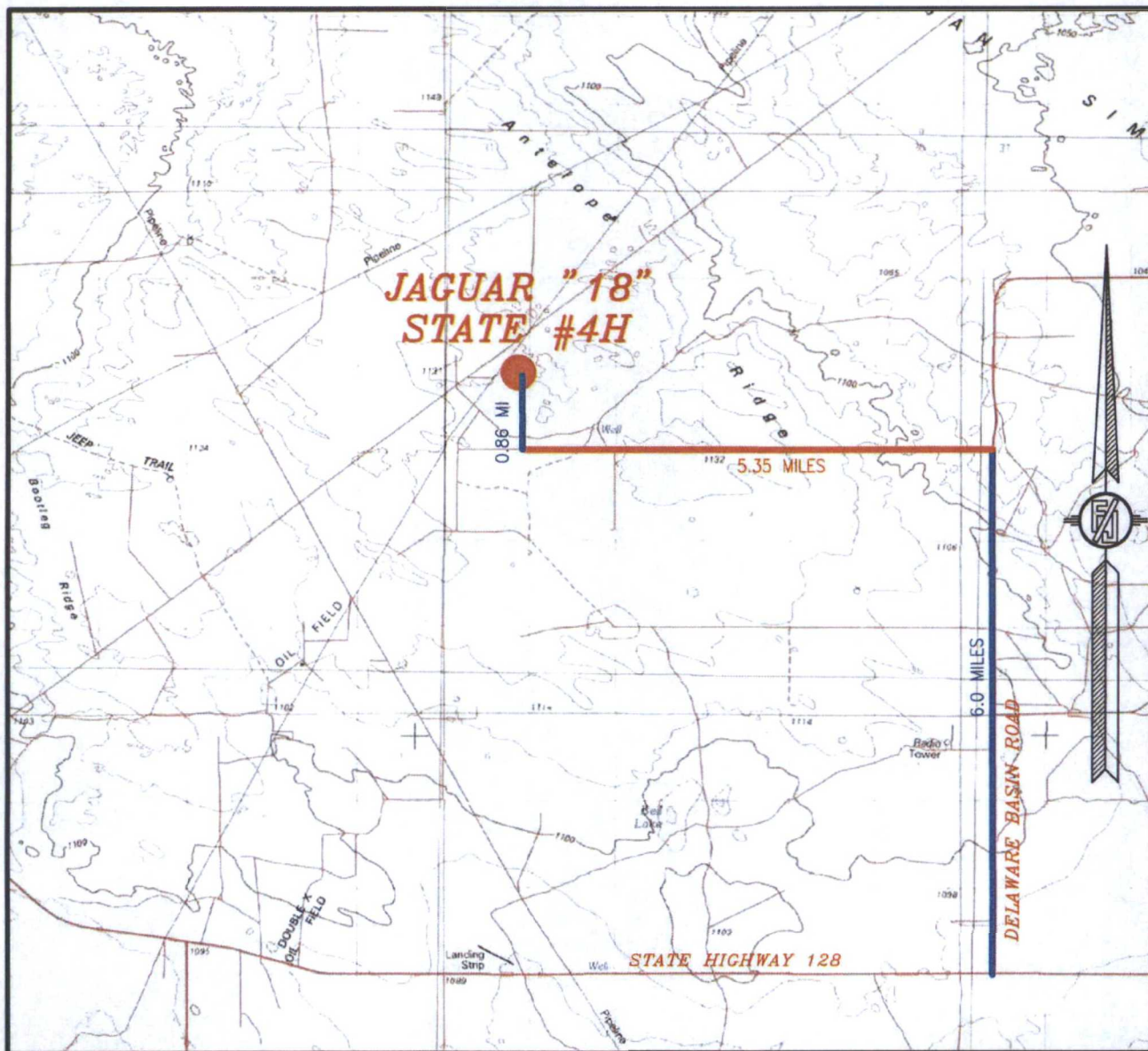
ENDURANCE RESOURCES, LLC
JAGUAR "18" STATE #4H
LOCATED 330 FT. FROM THE NORTH LINE
AND 660 FT. FROM THE EAST LINE OF
SECTION 18, TOWNSHIP 23 SOUTH,
RANGE 33 EAST, N.M.P.M.
LEA COUNTY, STATE OF NEW MEXICO

JULY 16, 2013

SURVEY NO. 2090

MADRON SURVEYING, INC. 301 SOUTH CANAL CARLSBAD, NEW MEXICO
(575) 234-3341

SECTION 18, TOWNSHIP 23 SOUTH, RANGE 33 EAST, N.M.P.M.
LEA COUNTY, STATE OF NEW MEXICO
VICINITY MAP



NOT TO SCALE

ENDURANCE RESOURCES, LLC
JAGUAR "18" STATE #4H
LOCATED 330 FT. FROM THE NORTH LINE
AND 660 FT. FROM THE EAST LINE OF
SECTION 18, TOWNSHIP 23 SOUTH,
RANGE 33 EAST, N.M.P.M.
LEA COUNTY, STATE OF NEW MEXICO

JULY 16, 2013

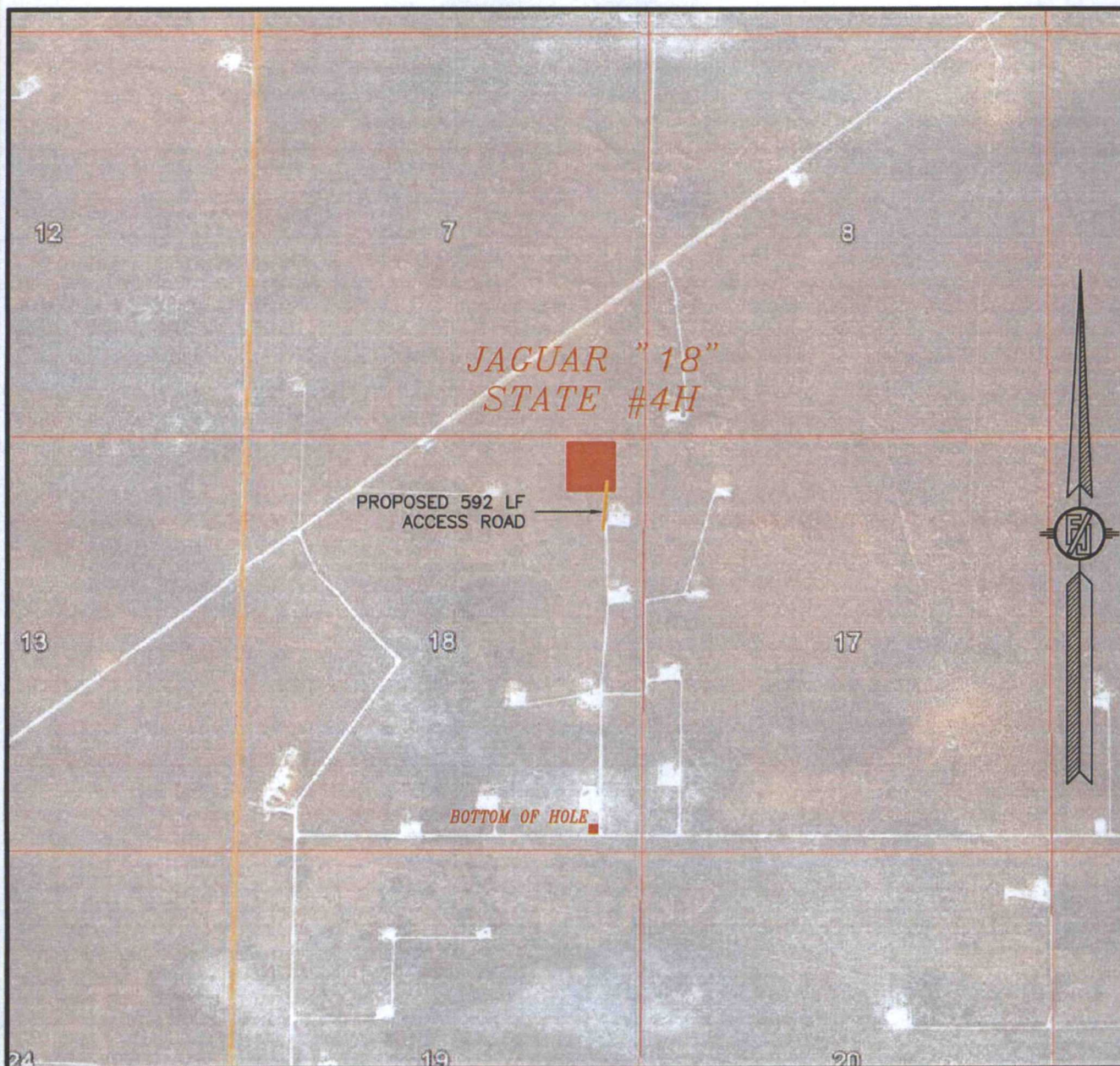
DIRECTIONS TO LOCATION

FROM THE INTERSECTION OF STATE HIGHWAY 128 AND DELAWARE BASIN ROAD GO NORTH ON DELAWARE BASIN ROAD APPROX. 6.0 MILE TO A LEASE ROAD ON LEFT (WEST) TURN WEST AT LEASE ROAD, GO APPROX. 5.35 MILES TO A LEASE ROAD ON RIGHT (NORTH) TURN NORTH GO APPROX. 0.86 MILES TO LOCATION.

MADRON SURVEYING, INC. 301 SOUTH CANAL (575) 234-3341

SURVEY NO. 2090
CARLSBAD, NEW MEXICO

SECTION 18, TOWNSHIP 23 SOUTH, RANGE 33 EAST, N.M.P.M.
LEA COUNTY, STATE OF NEW MEXICO
AERIAL PHOTO



NOT TO SCALE
AERIAL PHOTO:
GOOGLE EARTH
MARCH 2012

ENDURANCE RESOURCES, LLC
JAGUAR "18" STATE #4H
LOCATED 330 FT. FROM THE NORTH LINE
AND 660 FT. FROM THE EAST LINE OF
SECTION 18, TOWNSHIP 23 SOUTH,
RANGE 33 EAST, N.M.P.M.
LEA COUNTY, STATE OF NEW MEXICO

JULY 16, 2013

SURVEY NO. 2090

MADRON SURVEYING, INC. 301 SOUTH CANAL (575) 234-3341 CARLSBAD, NEW MEXICO