

District I  
1625 N. French Dr., Hobbs, NM 88240  
Phone: (575) 393-6161 Fax: (575) 393-0720  
District II  
811 S. First St., Artesia, NM 88210  
Phone: (575) 748-1283 Fax: (575) 748-9720  
District III  
1000 Rio Brazos Road, Aztec, NM 87410  
Phone: (505) 334-6178 Fax: (505) 334-6170  
District IV  
1220 S. St. Francis Dr., Santa Fe, NM 87505  
Phone: (505) 476-3460 Fax: (505) 476-3460

**HOBBS OGD**  
**OCT 03 2016**  
**RECEIVED**

State of New Mexico  
Energy, Minerals & Natural Resources Department  
OIL CONSERVATION DIVISION  
1220 South St. Francis Dr.  
Santa Fe, NM 87505

Form C-102  
Revised August 1, 2011  
Submit one copy to appropriate  
District Office  
☐ AMENDED REPORT

WELL LOCATION AND ACREAGE DEDICATION PLAT

<sup>1</sup> API Number <b>30-025-42681</b>	<sup>2</sup> Pool Code <b>5990</b>	<sup>3</sup> Pool Name <b>Triple X; Bone Spring</b>
<sup>4</sup> Property Code <b>30884</b>	<sup>5</sup> Property Name <b>THISTLE UNIT</b>	<sup>6</sup> Well Number <b>124H</b>
<sup>7</sup> OGRID No. <b>6137</b>	<sup>8</sup> Operator Name <b>DEVON ENERGY PRODUCTION COMPANY, L.P.</b>	<sup>9</sup> Elevation <b>3716.5</b>

<sup>10</sup> Surface Location

UL or lot no. <b>D</b>	Section <b>22</b>	Township <b>23 S</b>	Range <b>33 E</b>	Lot Idn	Feet from the <b>250</b>	North/South line <b>NORTH</b>	Feet from the <b>400</b>	East/West line <b>WEST</b>	County <b>LEA</b>
---------------------------	----------------------	-------------------------	----------------------	---------	-----------------------------	----------------------------------	-----------------------------	-------------------------------	----------------------

<sup>11</sup> Bottom Hole Location If Different From Surface

UL or lot no. <b>E</b>	Section <b>27</b>	Township <b>23 S</b>	Range <b>33 E</b>	Lot Idn	Feet from the <b>2610</b>	North/South line <b>NORTH</b>	Feet from the <b>404</b>	East/West line <b>WEST</b>	County <b>LEA</b>
---------------------------	----------------------	-------------------------	----------------------	---------	------------------------------	----------------------------------	-----------------------------	-------------------------------	----------------------

<sup>12</sup> Dedicated Acres <b>240</b>	<sup>13</sup> Joint or Infill	<sup>14</sup> Consolidation Code	<sup>15</sup> Order No.
---	-------------------------------	----------------------------------	-------------------------

No allowable will be assigned to this completion until all interests have been consolidated or a non-standard unit has been approved by the division.

<p><b>NOTE:</b> LATITUDE AND LONGITUDE COORDINATES ARE SHOWN USING THE NORTH AMERICAN DATUM OF 1983 (NAD83). LISTED NEW MEXICO STATE PLANE EAST COORDINATES ARE OLD (LONG). BASES OF BEARING AND DISTANCES USED ARE NEW MEXICO STATE PLANE EAST COORDINATES, NAD83, TO THE SURFACE.</p> <p><b>TRISTLE UNIT 124H</b> ELEV. = 3716.5' LAT. = 32.2967870°N (NAD83) LONG. = 103.5674549°W NWSP EAST (FT) N = 472848.78 E = 777982.70</p> <p><b>BOTTOM OF HOLE</b> LAT. = 32.2758316°N LONG. = 103.5675221°W NWSP EAST (FT) N = 464924.91 E = 777988.56</p> <p><b>W Q CORNER SEC. 27</b> LAT. = 32.2844402°N LONG. = 103.5687493°W NWSP EAST (FT) N = 462234.08 E = 777459.34</p> <p><b>SE CORNER SEC. 27</b> LAT. = 32.2684152°N LONG. = 103.5516675°W NWSP EAST (FT) N = 462262.37 E = 782939.28</p>	<p><b><sup>17</sup> OPERATOR CERTIFICATION</b></p> <p>I hereby certify that the information contained herein is true and complete to the best of my knowledge and belief, and that this organization either owns a working interest or unleased mineral interest in the land including the proposed bottom hole location or has a right to drill this well at this location pursuant to a contract with an owner of such a mineral or working interest, or to a voluntary pooling agreement or a compulsory pooling order heretofore entered by the division.</p> <p><i>Rebecca Deal</i> 9/28/2016 Signature Date</p> <p><b>Rebecca Deal, Regulatory Analyst</b> Printed Name</p> <p><b>rebecca.deal@dvn.com</b> E-mail Address</p> <p><b><sup>18</sup> SURVEYOR CERTIFICATION</b></p> <p>I hereby certify that the well location shown on this plat was plotted from field notes of actual surveys made by me or under my supervision, and that the same is true and correct to the best of my belief.</p> <p><i>Mon F. Jaramillo</i> Date of Survey 12797</p> <p><i>Mon F. Jaramillo</i> Signature and Seal of Professional Surveyor</p> <p>Certificate Number: <b>FILMON F. JARAMILLO, PLS 12797</b> SURVEY NO. 3806A</p>
---	--

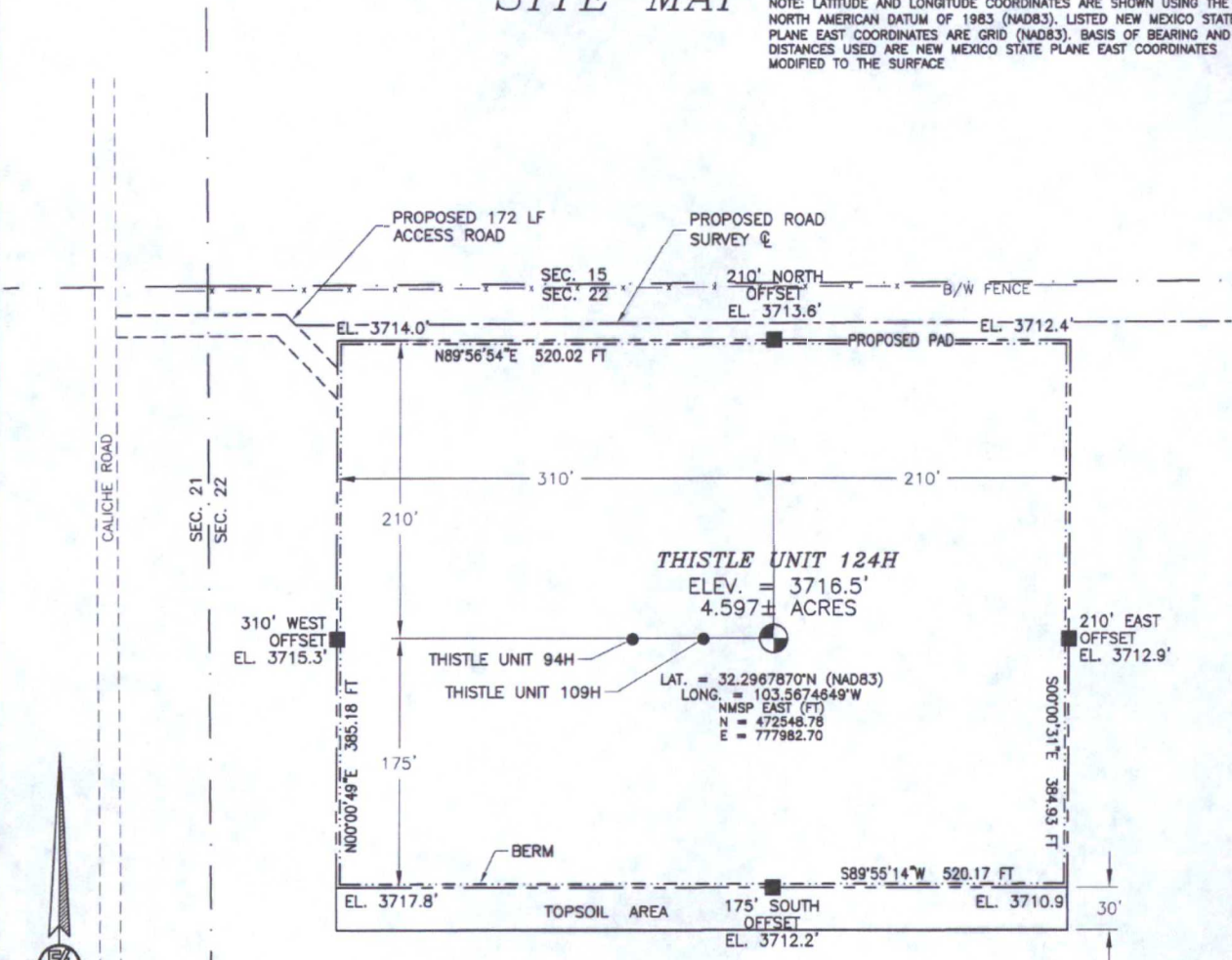
PP: 715 FNL & 435 FWL, Sec. 22-23S-33E

Project Area: XXXXXXXXXX  
Producing Area: XXXXXXXXXX

SECTION 22, TOWNSHIP 23 SOUTH, RANGE 33 EAST, N.M.P.M.  
LEA COUNTY, STATE OF NEW MEXICO

SITE MAP

NOTE: LATITUDE AND LONGITUDE COORDINATES ARE SHOWN USING THE NORTH AMERICAN DATUM OF 1983 (NAD83). LISTED NEW MEXICO STATE PLANE EAST COORDINATES ARE GRID (NAD83). BASIS OF BEARING AND DISTANCES USED ARE NEW MEXICO STATE PLANE EAST COORDINATES MODIFIED TO THE SURFACE



0 12 60 120 240

SCALE 1" = 120'

DIRECTIONS TO LOCATION

FROM STATE HIGHWAY 128 AND CR 21 (DELAWARE BASIN) GO NORTH ON CR 21 3.95 MILES, TURN LEFT ON PAVED ROAD (XL ROAD) AND GO WEST 3.4 MILES, TURN RIGHT ON CALICHE ROAD AND GO NORTH 0.9 MILE, BEND LEFT AND NORTHWEST 0.15 MILE, BEND RIGHT AND GO NORTHEAST 0.1 MILE, BEND LEFT GO NORTH 0.95 MILE ON RIGHT SIDE BEGIN PROPOSED ROAD, FOLLOW EAST 172' TO NORTHWEST PAD CORNER.

DEVON ENERGY PRODUCTION COMPANY, L.P.

THISTLE UNIT 124H

LOCATED 250 FT. FROM THE NORTH LINE  
AND 400 FT. FROM THE WEST LINE OF  
SECTION 22, TOWNSHIP 23 SOUTH,  
RANGE 33 EAST, N.M.P.M.

LEA COUNTY, STATE OF NEW MEXICO

MAY 27, 2015

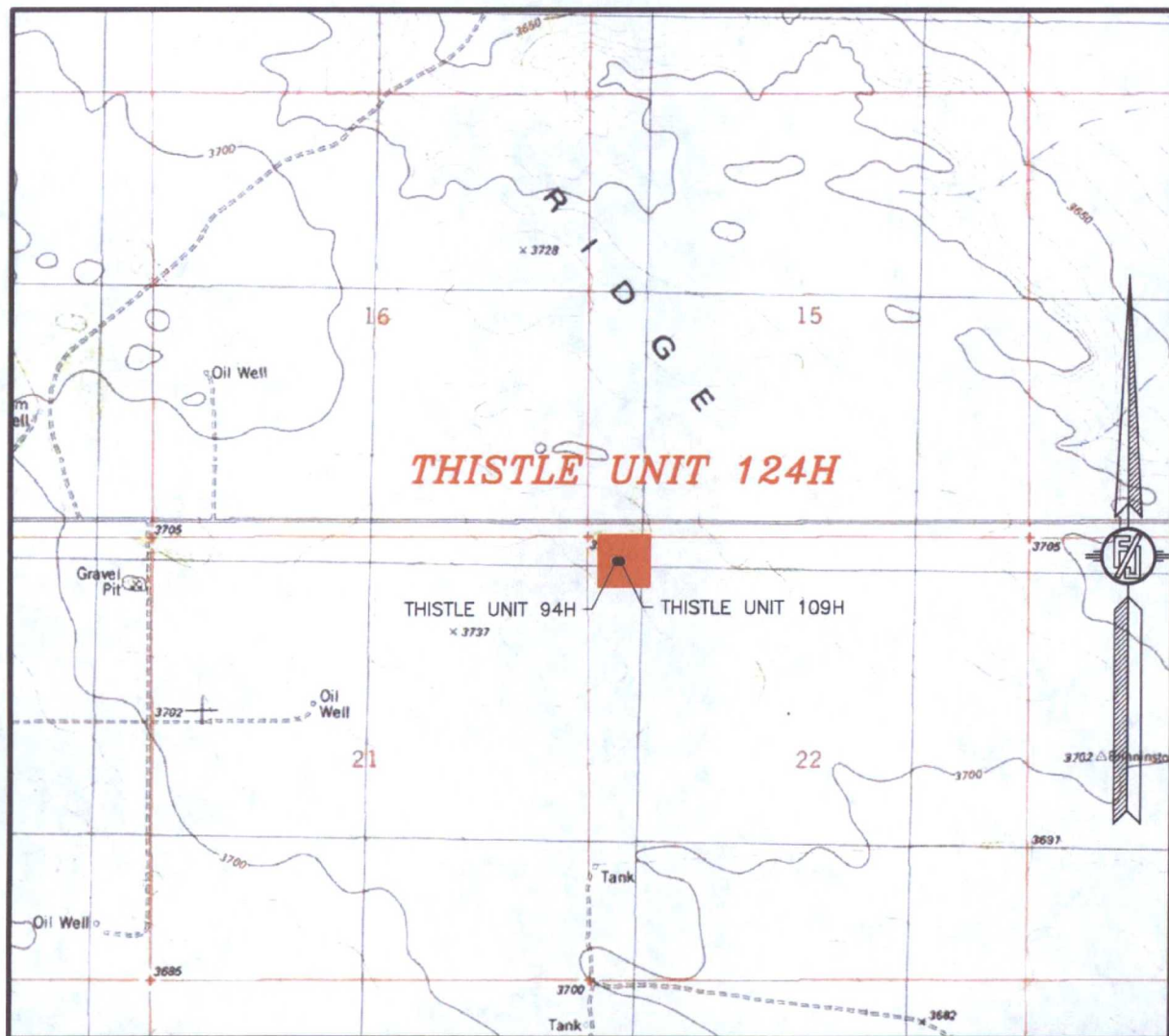
SURVEY NO. 3806A

MADRON SURVEYING, INC. 301 SOUTH CANAL (575) 234-3341

CARLSBAD, NEW MEXICO



SECTION 22, TOWNSHIP 23 SOUTH, RANGE 33 EAST, N.M.P.M.  
LEA COUNTY, STATE OF NEW MEXICO  
LOCATION VERIFICATION MAP



USGS QUAD MAP:  
TIP TOP WELLS

NOT TO SCALE

DEVON ENERGY PRODUCTION COMPANY, L.P.  
**THISTLE UNIT 124H**

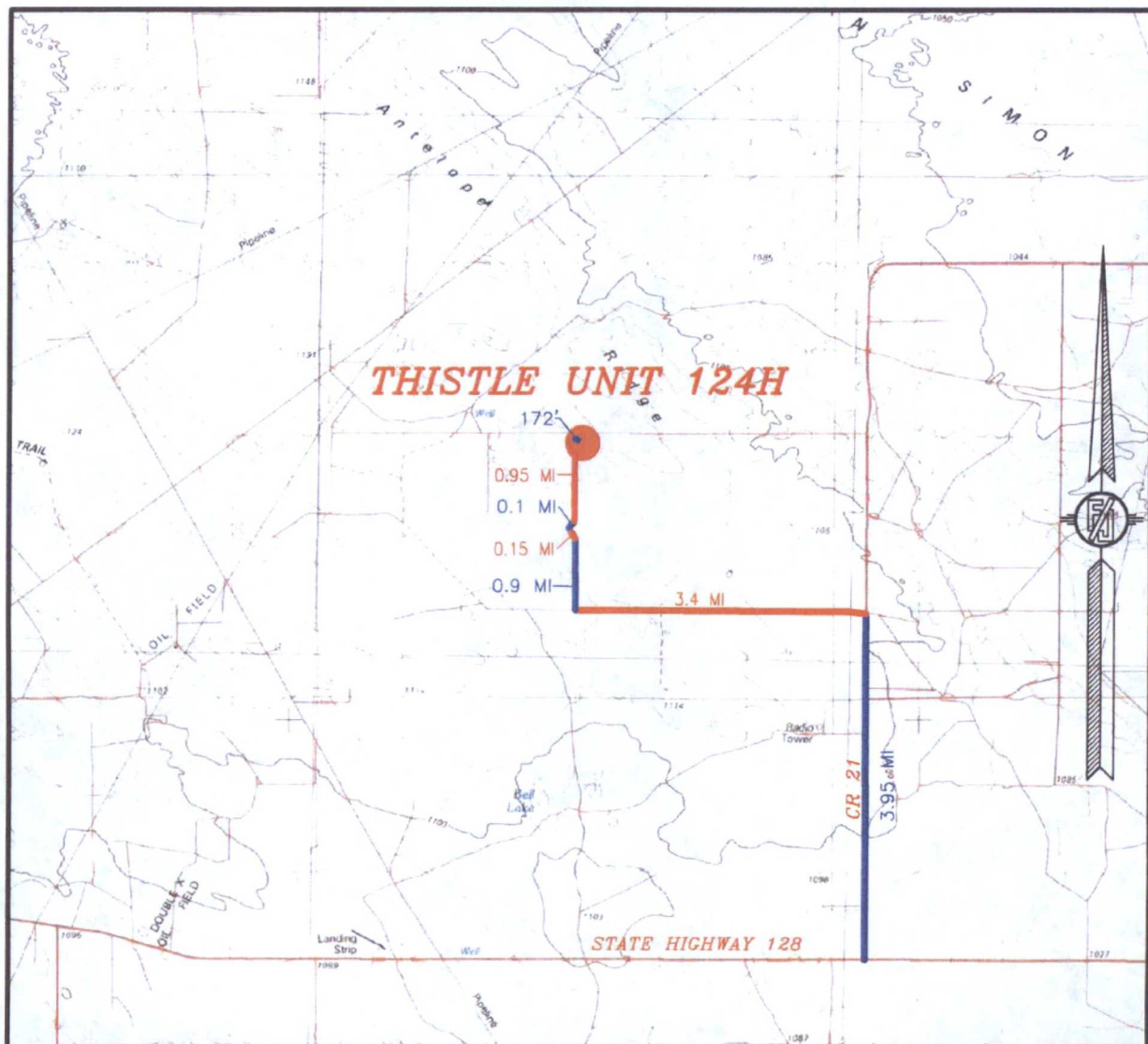
LOCATED 250 FT. FROM THE NORTH LINE  
AND 400 FT. FROM THE WEST LINE OF  
SECTION 22, TOWNSHIP 23 SOUTH,  
RANGE 33 EAST, N.M.P.M.  
LEA COUNTY, STATE OF NEW MEXICO

MAY 27, 2015

SURVEY NO. 3806A

MADRON SURVEYING, INC. 301 SOUTH CANAL (575) 234-3341 CARLSBAD, NEW MEXICO

SECTION 22, TOWNSHIP 23 SOUTH, RANGE 33 EAST, N.M.P.M.  
LEA COUNTY, STATE OF NEW MEXICO  
VICINITY MAP



DISTANCES IN MILES

NOT TO SCALE

DEVON ENERGY PRODUCTION COMPANY, L.P.

**THISTLE UNIT 124H**

LOCATED 250 FT. FROM THE NORTH LINE  
AND 400 FT. FROM THE WEST LINE OF  
SECTION 22, TOWNSHIP 23 SOUTH,  
RANGE 33 EAST, N.M.P.M.  
LEA COUNTY, STATE OF NEW MEXICO

**DIRECTIONS TO LOCATION**

FROM STATE HIGHWAY 128 AND CR 21 (DELAWARE BASIN) GO NORTH ON CR 21 3.95 MILES, TURN LEFT ON PAVED ROAD (XL ROAD) AND GO WEST 3.4 MILES, TURN RIGHT ON CALICHE ROAD AND GO NORTH 0.9 MILE, BEND LEFT AND NORTHWEST 0.15 MILE, BEND RIGHT AND GO NORTHEAST 0.1 MILE, BEND LEFT GO NORTH 0.95 MILE ON RIGHT SIDE BEGIN PROPOSED ROAD, FOLLOW EAST 172' TO NORTHWEST PAD CORNER.

MAY 27, 2015

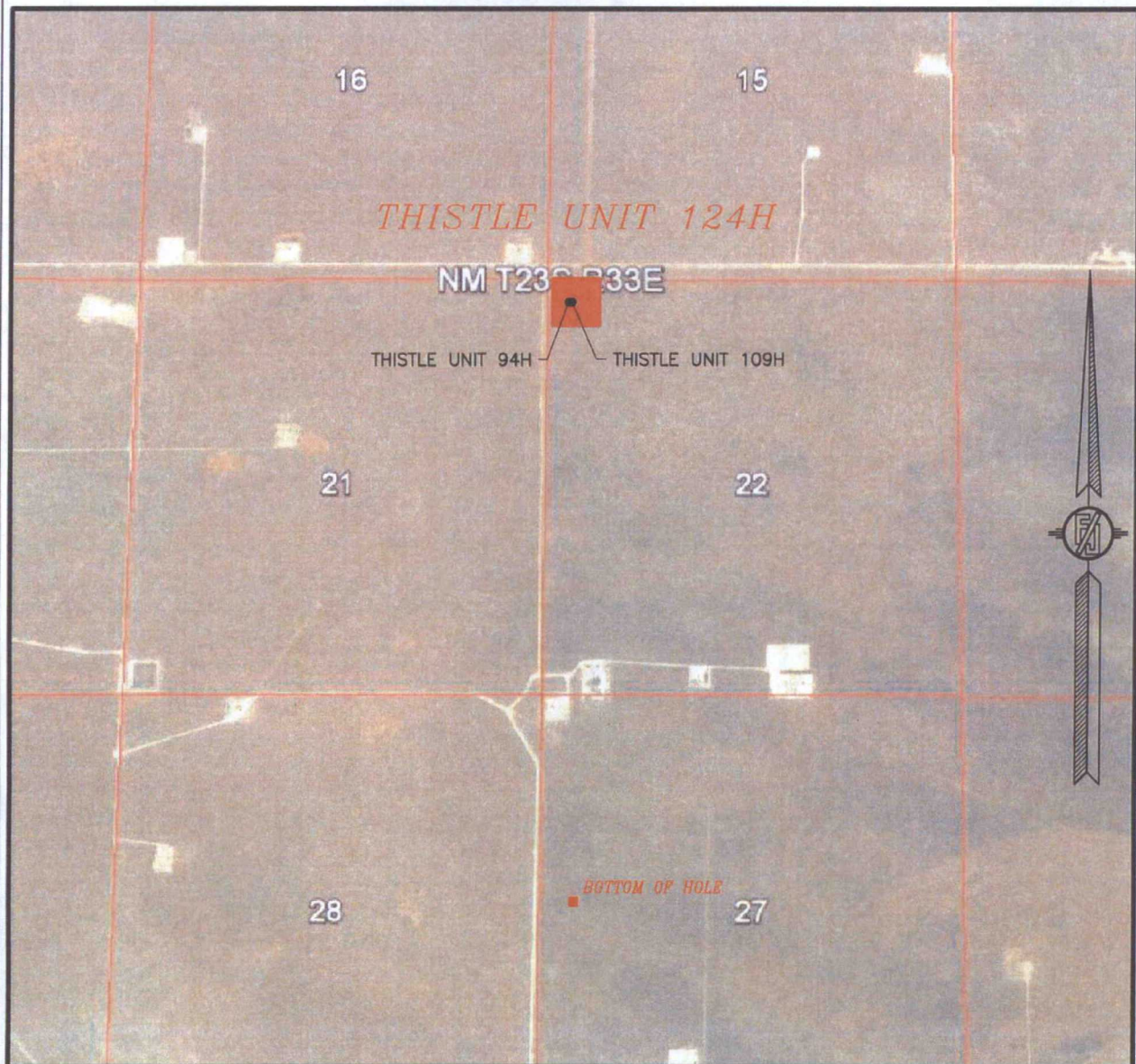
SURVEY NO. 3806A

MADRON SURVEYING, INC. 301 SOUTH CANAL  
(575) 234-3341

CARLSBAD, NEW MEXICO



SECTION 22, TOWNSHIP 23 SOUTH, RANGE 33 EAST, N.M.P.M.  
LEA COUNTY, STATE OF NEW MEXICO  
**AERIAL PHOTO**



NOT TO SCALE  
AERIAL PHOTO:  
GOOGLE EARTH  
FEBRUARY 2014

DEVON ENERGY PRODUCTION COMPANY, L.P.

**THISTLE UNIT 124H**

LOCATED 250 FT. FROM THE NORTH LINE  
AND 400 FT. FROM THE WEST LINE OF  
SECTION 22, TOWNSHIP 23 SOUTH,  
RANGE 33 EAST, N.M.P.M.  
LEA COUNTY, STATE OF NEW MEXICO

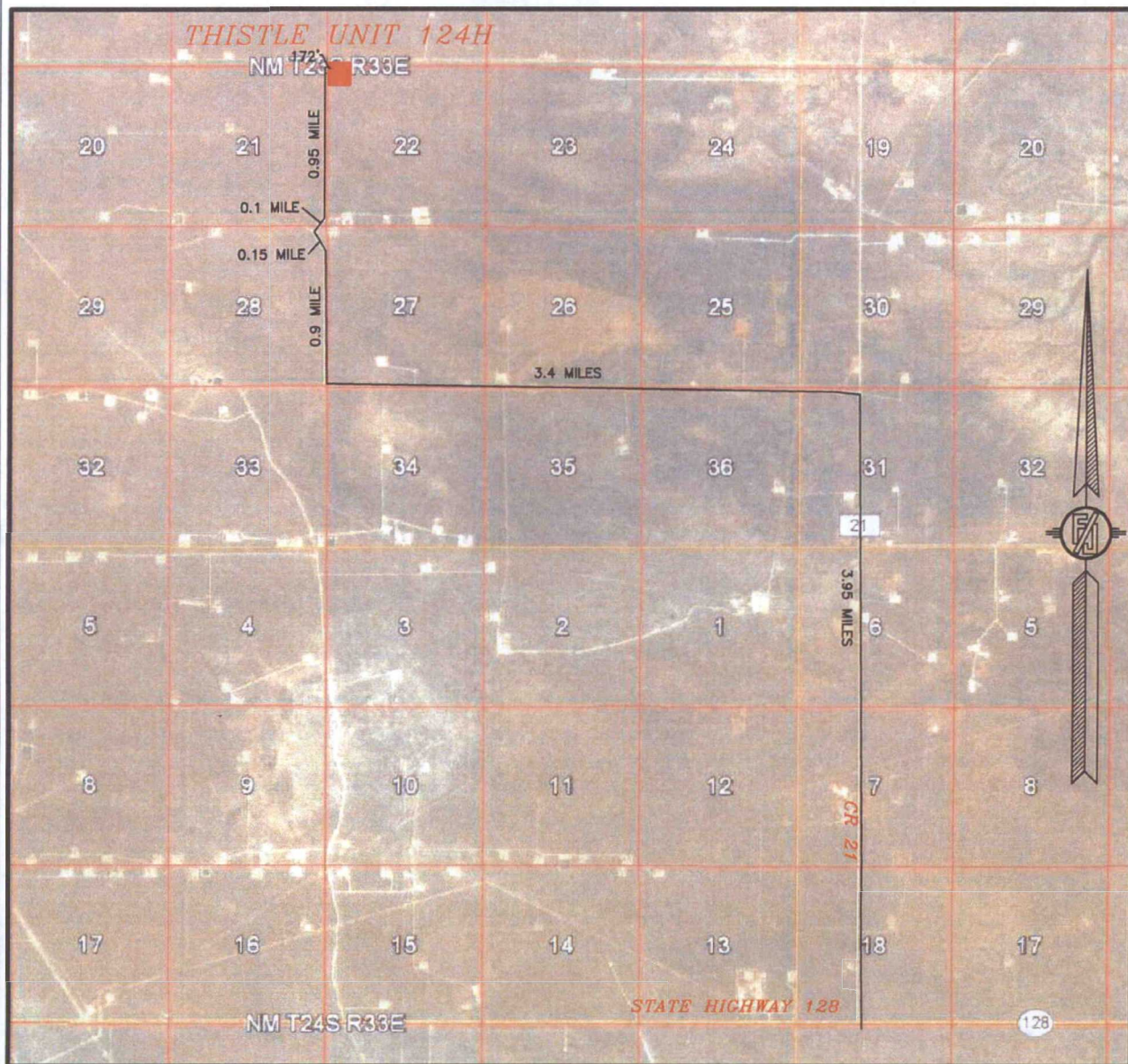
MAY 27, 2015

SURVEY NO. 3806A

MADRON SURVEYING, INC. 301 SOUTH CANAL (575) 234-3341 CARLSBAD, NEW MEXICO



SECTION 22, TOWNSHIP 23 SOUTH, RANGE 33 EAST, N.M.P.M.  
LEA COUNTY, STATE OF NEW MEXICO  
**ACCESS AERIAL ROUTE MAP**



NOT TO SCALE  
AERIAL PHOTO:  
GOOGLE EARTH  
FEBRUARY 2014

**DEVON ENERGY PRODUCTION COMPANY, L.P.**  
**THISTLE UNIT 124H**

LOCATED 250 FT. FROM THE NORTH LINE  
AND 400 FT. FROM THE WEST LINE OF  
SECTION 22, TOWNSHIP 23 SOUTH,  
RANGE 33 EAST, N.M.P.M.  
LEA COUNTY, STATE OF NEW MEXICO

MAY 27, 2015

SURVEY NO. 3806A

MADRON SURVEYING, INC. 301 SOUTH CANAL (575) 234-3341 CARLSBAD, NEW MEXICO