

1625 N. French Dr., Hobbs, NM 88240
Phone (575) 393-6161 Fax: (575) 393-0720

DISTRICT II

811 S. First St., Artesia, NM 88210
Phone (575) 746-1283 Fax: (575) 746-8729

DISTRICT III

1000 Rio Brazos Rd., Aztec, NM 87410
Phone (505) 334-6170 Fax (505) 334-6170

DISTRICT IV

1220 S. St. Francis Dr., Santa Fe, NM 87505
Phone (505) 478-3460 Fax: (505) 478-3462

State of New Mexico
Energy, Minerals and Natural Resources Department

Form C-102

Revised August 1, 2011

HOBBS & CO.

HOBBS Submit one copy to appropriate District Office

OIL CONSERVATION DIVISION

1220 South St. Francis Dr.
Santa Fe, New Mexico 87505

JUL 21 2015

WELL LOCATION AND ACREAGE DEDICATION PLAT RECEIVED AMENDED REPORT

API Number 30-025- 42700	Pool Code 21650	Pool Name EK-BONE SPRUNG
Property Code 315045	Property Name EK 29 BS2 FEDERAL COM	Well Number 4H
OGRIID No. 22044	Operator Name McELVAIN ENERGY, INC	Elevation 3904

Surface Location

UL or lot No.	Section	Township	Range	Lot Idn	Feet from the	North/South line	Feet from the	East/West line	County
P	30	18 S.	34 E		175	SOUTH	100	EAST	LEA

Bottom Hole Location If Different From Surface

UL or lot No.	Section	Township	Range	Lot Idn	Feet from the	North/South line	Feet from the	East/West line	County
D	29	18 S	34 E		510	NORTH	660	WEST	LEA

Dedicated Acres	Joint or Infill	Consolidation Code	Order No.
160--			

NO ALLOWABLE WILL BE ASSIGNED TO THIS COMPLETION UNTIL ALL INTERESTS HAVE BEEN CONSOLIDATED
OR A NON-STANDARD UNIT HAS BEEN APPROVED BY THE DIVISION

N: 628621.3
E: 769598.1
(NAD83)

N: 628640.1
E: 769593.2
(NAD83)

N: 628560.4
E: 772232.9
(NAD83)

BOTTOM HOLE LOCATION
Lat - N 32°43'28.46"
Long - W 103°35'20.21"
NMSPCE- N 628135.3
E 770258.1
(NAD-83)

PROJECT AREA

PRODUCING AREA

SURFACE LOCATION
Lat - N 32°42'42.99"
Long - W 103°35'28.94"
NMSPCE- N 623533.9
E 769543.9
(NAD-83)

3903.9' 3911.3'
3895.8' 3902.1'

30 29

175'

100'

N: 623359.8
E: 769845.7
(NAD83)

N: 623378.0
E: 772285.2
(NAD83)

OPERATOR CERTIFICATION
I hereby certify that the information contained herein is true and complete to the best of my knowledge and belief, and that this organization either owns a working interest or undivided mineral interest in the land including the proposed bottom hole location or has a right to drill this well at this location pursuant to a contract with an owner of such a mineral or working interest, or to a voluntary pooling agreement or a compulsory pooling order heretofore entered by the division.

Signature: Joe T. Janica
Date: 03/12/15
Printed Name: Joe T. Janica
Email Address: joejanica@valornet.com

SURVEYOR CERTIFICATION
I hereby certify that the well location shown on this plat was plotted from field notes of actual surveys made by me or under my supervision and that the same is true and correct to the best of my belief.

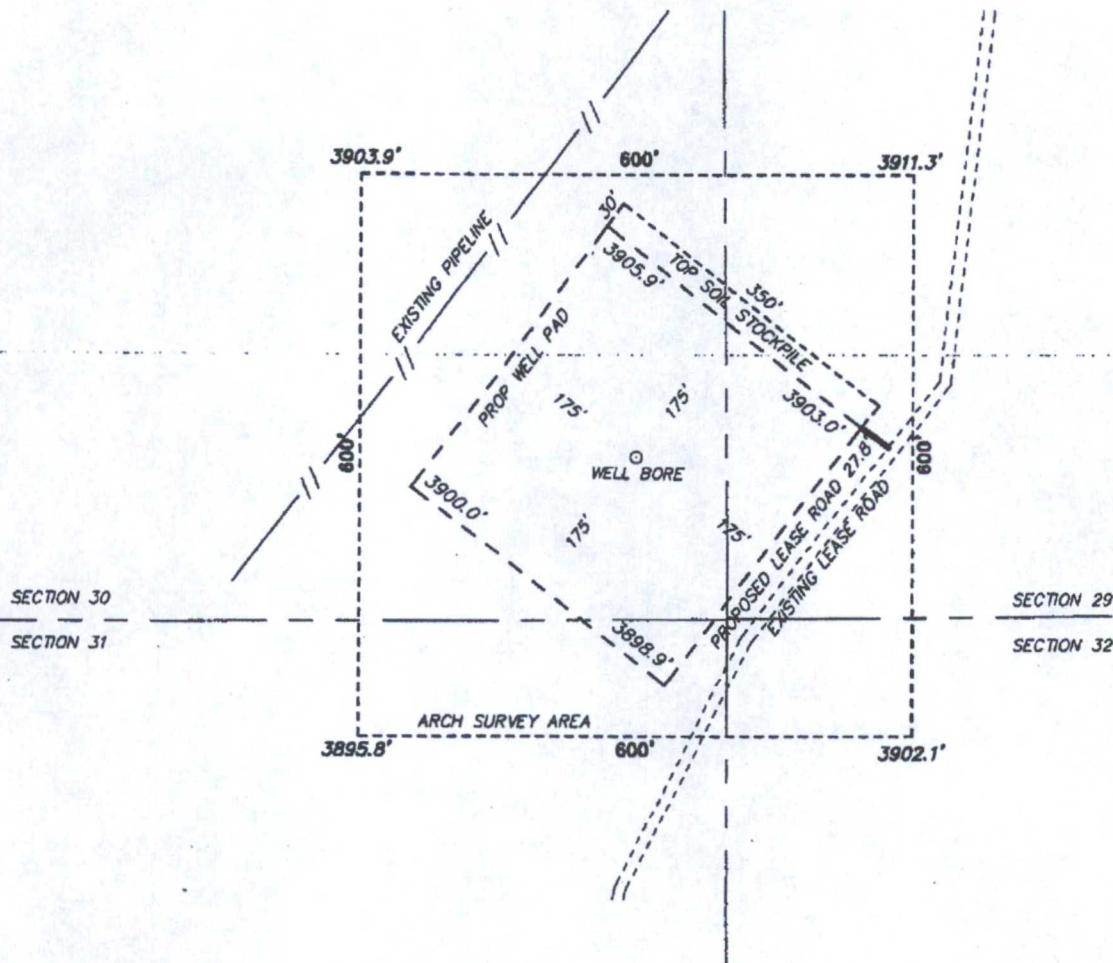
DECEMBER 10, 2014
Date Surveyed
Signature of Professional Surveyor
7977
Certificate Number: 7977
Basic Surveyor

0' 500' 1000' 1500' 2000'
SCALE: 1" = 1000'
WO Num.: 31339

EXHIBIT "A"

JUL 22 2015

SECTION 30, TOWNSHIP 18 SOUTH, RANGE 34 EAST, N.M.P.M.,
LEA COUNTY, NEW MEXICO.

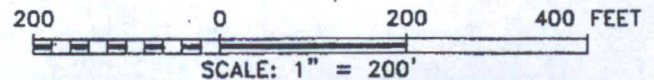


McELVAIN ENERGY, INC
EK 29 BS2 FEDERAL COM 4H
ELEV. - 3904'
 Lat - N 32°42'42.99"
 Long - W 103°35'28.94"
 NMSPCE - N 623533.9
 E 769543.9
 (NAD-83)

Directions to Location:

FROM JUNCTION OF US 529 AND GEMINI ROAD GO
 NORTHWEST ON US 529 1.6 MILES, TURN
 SOUTHWEST ON LEASE ROAD 1.7 MILES, SOUTHEAST
 ON LEASE ROAD 0.7 MILES, LEFT ON LEASE ROAD
 871.2 FEET AND PROPOSED LEASE ROAD WILL BE
 ON LEFT.

HOBBS, NM IS ±26 MILES TO THE EAST OF LOCATION.



McELVAIN ENERGY, INC

REF: EK 29 BS2 FEDERAL COM 4H / WELL PAD TOPO

THE EK 29 BS2 FEDERAL COM 4H LOCATED 175' FROM
 THE SOUTH LINE AND 100' FROM THE EAST LINE OF
 SECTION 30, TOWNSHIP 18 SOUTH, RANGE 34 EAST.

N.M.P.M., LEA COUNTY, NEW MEXICO.

basin
surveys
 focused on excellence
 in the oilfield

P.O. Box 1786 (575) 393-7316 - Office
 1120 N. West County Rd. (575) 392-2206 - Fax
 Hobbs, New Mexico 88241 basin-surveys.com