

District I – (575) 393-6161
1625 N. French Dr., Hobbs, NM 88240
District II – (575) 748-1283
811 S. First St., Artesia, NM 88210
District III – (505) 334-6178
1000 Rio Brazos Rd., Aztec, NM 87410
District IV – (505) 476-3460
1220 S. St. Francis Dr., Santa Fe, NM 87505

OIL CONSERVATION DIVISION
1220 South St. Francis Dr.
Santa Fe, NM 87505

WELL API NO. 30-025-25815
5. Indicate Type of Lease STATE <input checked="" type="checkbox"/> FEE <input type="checkbox"/>
6. State Oil & Gas Lease No. B-1056
7. Lease Name or Unit Agreement Name CENTRAL VACUUM UNIT
8. Well Number 27
9. OGRID Number 4323
10. Pool name or Wildcat VACUUM G/B SAN ANDRES

SUNDRY NOTICES AND REPORTS ON WELLS
(DO NOT USE THIS FORM FOR PROPOSALS TO DRILL OR TO DEEPEN OR PLUG BACK TO A DIFFERENT RESERVOIR. USE "APPLICATION FOR PERMIT" (FORM C-101) FOR SUCH PROPOSALS.)

1. Type of Well: Oil Well ☐ Gas Well ☒ Other INJECTOR

2. Name of Operator
CHEVRON U.S.A INC.

3. Address of Operator
6301 DEAUVILLE BLVD, MIDLAND, TEXAS 79706

4. Well Location

Unit Letter J : 1330 feet from the SOUTH line and 1425 feet from the E line
Section 25 Township 17-S Range 34-E NMPM County LEA

11. Elevation (Show whether DR, RKB, RT, GR, etc.)
3,990' (GL)

12. Check Appropriate Box to Indicate Nature of Notice, Report or Other Data

NOTICE OF INT

PERFORM REMEDIAL WORK ☐
TEMPORARILY ABANDON ☐
PULL OR ALTER CASING ☐
DOWNHOLE COMMINGLE ☐

INT TO PA
P&A NR Pm X
P&A R

SUBSEQUENT REPORT OF:

REMEDIAL WORK ☐ ALTERING CASING ☐
COMMENCE DRILLING OPNS. ☐ P AND A ☒
CASING/CEMENT JOB ☐

OTHER: ☐

OTHER: ☐

13. Describe proposed or completed operations. (Clearly state all pertinent details, and give pertinent dates, including estimated date of starting any proposed work). SEE RULE 19.15.7.14 NMAC. For Multiple Completions: Attach wellbore diagram of proposed completion or recompletion.

CHEVRON USA INC. HAS PLUGGED THE ABOVE SUBJECT WELL AS FOLLOWS:

06/14/2016 MIRU pump truck and vacuum truck. RIH with fishing tool. Latched onto fish and POOH from 1836' to 1253', Fish stuck, Continue fishing OPS in the AM.

06/15/2016 Continue to RIH to 1253'. Latched onto fish and began jarring down, after 30 minutes the fish was not moving and operator had felt the tool had come loose or the pin was sheared. POOH found the 1.5" overshot fishing tool was split and the bait tool was ovaled. We lost two pieces of the fishing grapple approx. 1" X 1". Rig down and move out.

Continued on next page also attached current wellbore diagram.

Approved for Plugging of wellbore only. Liability under bond is retained pending restoration and completion of the C-103, Specific for Subsequent Report of Well Plugging, which may be found on the OCD web page under forms.

Spud Date:

Rig Release Date

I hereby certify that the information above is true and complete to the best of my knowledge and belief.

SIGNATURE Cindy Herrera-Murillo TITLE PERMITTING SPECIALIST DATE 10/13/2016

Type or print name CINDY HERRERA-MURILLO E-mail address: Cherreramurillo@chevron.com PHONE: 575-263-0431

For State Use Only

APPROVED BY: Mark Whitaker TITLE P.E.S. DATE 10/17/2016

Conditions of Approval (if any):

Plugging Procedure:

06/16/2016 Hooked up killine to well and PSI test to 1500#. MIRU acid truck and treater Van. Acidized the well with 500 gallon of green acid @ ½ BPM. RDMO Acid trucks.

06/20/2016 MIRU slickline run kill lines. Pump truck and Vac Truck. Continue fishing OPS. RIH with GS fishing tool. NU slickline BOP and lubricator. Tagged at 1258'. Could not latch onto fish. POOH we could see scratch marks on the inside of the tool. RIH with Magnet, We did not pick up any pieces of metal.

06/21/2016 RIH w/Blind Box and tried freeing up broken grapple pieces. RIH with Magnet, tag @ 1257', Retrieved one piece of the grapple. RIH with Magnet again, we did not retrieve anything. We ran a GS tool with overshot. We couldn't latch onto fish. RIH with Blind Box and hit on fish 62 times. RIH with Magnet. We could not latch over fish. POOH. RDMO slickline and associated equipment.

06/29/2016 MIRU petroplex acid truck and treating van. Performed line test to 2500#. Opened well, tubing PIS @800#. Started on acid and pumped 15 bbls 20% acid flushed with 2 bbls fresh water. RDMO acid truck and van. Well on Vacuum.

06/30/2016 MIRU pump truck. Pump 20 bbls 10# brine down to clear tubing and residual acid at 11 bbls in tubing PSI 0. 20 bbls in, the well was on a ¼ BPM vacuum. RDMO pump truck.

07/18/2016 MIRU Precision PSI Date WL Truck, Pump truck and Vac Truck. RIH w/Blind Box, tag fish @1261'. POOH. RIH with GR adapter w/1.60 overshot. Latched onto Fish, While attempting to pull fish free. We sheared Pin. POOH, RIH w/GS tool. After several attempts jarring w/hydraulic jars, fish came loose. POOH w/Cable head, 2 weight bars spang jars and PLU setting tool. The tubing plus is still in well. Flowed back 5 bbls fluid, then pumped 15 bbls in well #1/2 BPM strands (blockage at bottom master valve.) SL Crew will bring out wire fishing tools. Center spear, Etc to fish out FG strands. We also recovered the piece of grapple that was left in the hole on previous fishing OPS.

07/19/2016 RIH with 2 leg wire fishing tools and magnet to retrieve braided cable. We made 2 trips with 1.5 magnet. We retrieved some braided cable in valves and in well and a handful of cable slivers. Beginning depth was ball of cable. Beginning depth was ball of cable at surface equipment depth is 2049'. Flowing well back to pit.

07/20/2016 Flowed back 40 bbls of water. Oil overnight maintaining 500 # tubing PSI. R/U lubricator, SI PSI 750#. RIH w/Impression block, didn't go past WH. RIH w/2 leg fish, Retrieved ball of wire. RIH w/2 leg fish to 2049'. RIH w/Impression Block. Impression of Cable only. RIH w/Center Spear, Did not recover anything of value, small pieces of cable we did not move obstruction, Perform Injection rate test. RDMO all equipment.

09/01/2016 MIRU coil tubing unit and associated equipment

09/02/2016 RIH with wash nozzle wash to 2057' getting some returns. POOH, PU overshot RIH catch the fishing neck of the running tool. Establish injection rate.

09/06/2016 Pump 59 bbls of Class C cement squeeze to plug well and rig down cement equipment.

09/08/2016. Rig up wireline and run in and tag @ 2073'. Rig down and move off location.

09/09/2016 Rig up Basic and load and test tubing to 2000 psi; 2 -3 times. It held every time.

09/16/2016 RU coil fill well with cement.

Please find attached wellbore diagram.

Wellbore Diagram

CVU 27

Created: 7/3/2008 By: JSS
 Updated: 8/19/2009 By: N Cayce
 Updated: 7/9/2013 By: CHAY
 Lease: Central Vacuum Unit
 Field: Vacuum (Grayburg San Andres)
 Surf. Loc.: 1330' FSL & 1425' FEL
 Bot. Loc.:
 County: Lea St.: NM
 Status: **P&A'd Injector**

Well #: 27 St. Lse: B-1056
 API: 30-025-25815
 Unit Ltr.: J Section: 25
 TSHP/Rng: 17S / 34E
 Unit Ltr.: Section:
 TSHP/Rng:
 CHEVNO: EQ0048
 Directions: Buckeye, NM

Surface Casing

Size:	8-5/8"; K-55
Wt., Grd.:	24#
Depth:	420'
Sxs Cmt:	425
Circulate:	Yes
TOC:	Surface
Hole Size:	12 1/4

Sqz'd csg. leak
428-456'

Tubing plug @ 2,073'

Production Casing

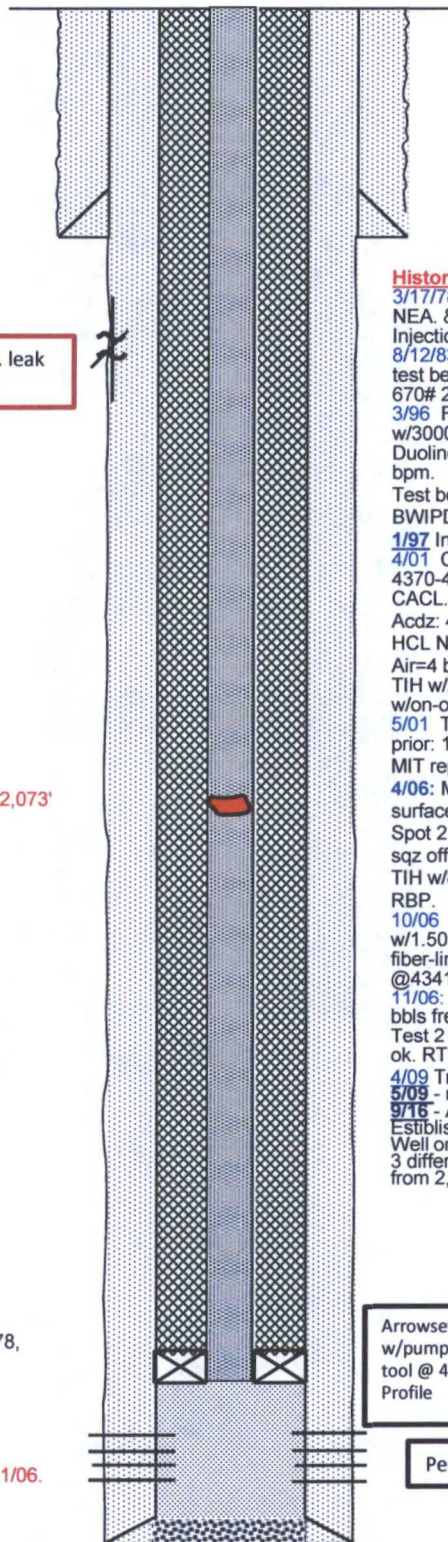
Size:	4-1/2", K55
Wt., Grd.:	10.5#
Depth:	4800'
Sxs Cmt:	2200
Circulate:	Yes
TOC:	Surface
Hole Size:	7 7/8

Perforations:

4386, 92, 98, 4411,
 15, 20, 30, 47, 4588, 4611, 20, 48, 55, 70, 78,
 87, 96, 4705, 4719'

Tubing and Packer Detail:

2 3/8" 139 jts. Fiber-lined tbg. @ 4341' 10/31/06.
 Pkr. 4' 2 3/8" nickel plated sub,
 land @ 4341' cmt. In 4 1/2" csg. 10/31/06.



KB: 4002'

DF: NA

GL: 3990'

Ini. Spud: 2/12/1978

Ini. Comp.: 3/17/1978

History:

3/17/78: Initial comp perfs: 4588-4719'. Acdz w/3900 gals 15% NEA. & perfs: 4386-4447'. Acdz w/2400 gals 15% NEA. Injection test after =172 BWIPD @ Vac. 24 hr. inj.
 8/12/83: Acadz/bleach 4386-4719' w/500/500 gals acid/bleach. test before: 1085 BWIPD @ 830#. test after: 1427 BWIPD @ 670# 24 hr. injection.
 3/96 Fish out inj. pkr. C/O to 4750'. Acadz perfs:4386-4719' w/3000 gals 20% NEFE. TIH w/new AD-1 inj pkr on 2-3/8" Duoline inj. tbg. Set pkr @ 4346'. Max. press.=2250#, Air=4.5 bpm.
 Test before: 778 BWIPD @ 1270# 24 hr. inj. test after: 1479 BWIPD @ 1092# 24 hr. inj.
 1/97 Increase surf. inj. pressure to 1500 psig.
 4/01 Clean out. Tag fish @ 4340'. Tag fill @ 4370'. C/O scale 4370-4580'. Sqz'd csg. leak 428-456' w/400 sx. CL C w/2% CACL.cmt.
 Acadz: 4 1/2" csg. perfs. GBSA 4386-4719' w/10000 gals 15% HCL NEFE & 4000# RS. Max.=2170#, Min.=865#, Avg=1250#, Air=4 bpm, ISIP=1240#, Total load 332 bbls. TIH w/2 3/8" 140 jts. duo-lined injection tbg. @ 4306'. Set pkr. w/on-off tool @ 4324'.
 5/01 Test @ comp: status WIW 1384 BWIPD @ 1447#. Test prior: 1185 BWIPD @ 1446#. MIT repair & C/O.
 4/06: MIT rpr & C/O. Hole in tbg 70 jts out. Test csg 4317-surface. Would not hold. Isolated hole in 4-1/2" csg. f/ 428-458'. Spot 2 sx sand on RBP @ 4317'. Pmp 380 sx CL C neat cmt to sqz off holes. Tag fill @4336'. Wash & ream 4336-4750' PBTD. TIH w/80 jts 2-3/8" tbg. Set RBP @ 4317'. Spot 2 sx sand on RBP.
 10/06 GIH w/5 1/2" arrowset nickel plated pkr w/pmp out plug w/1.50 "F" nipple & on-off tool on 139 jts. Remove RBP. 2 3/8" fiber-lined tbg. set at 4341'. **Tbg cemented in place.** Land @4341'. Cmt. in 4-1/2" csg.
 11/06: Acadz perfs: 4386-4719' w/2000 gals acid, Flush w/16 bbls fresh wtr. well on vac. Test 2 3/8" fiber-lined tbg. in 4 1/2" csg. @ 2500# for 35 minutes ok. RTI
 4/09 Tried to tag. Bad tbg. valve.
 5/09 - replace tbg valve Tag @ 4721'
 9/16 - Attempt to fish plug with WL and CT - unsuccessful. Establish rate past the plug and pump 59 bbls Class C cement. Well on a vacuum, tag at 2,073'. Pressure up tubing to 2,000 psi 3 different times, held each time. RU CT and cement with 6 bbls from 2,067' to surface.

Arrowset nickel-plated pkr
 w/pump-out plug & on/off
 tool @ 4341' 1.50"F
 Profile

Perfs: 4386-4719'

PBTD: 4750'
 TD: 4800'