

Submit 1 Copy To Appropriate District Office  
District I - (575) 393-6161  
1625 N. French Dr., Hobbs, NM 88240  
District II - (575) 748-1283  
811 S. First St., Artesia, NM 88210  
District III - (505) 334-6178  
1000 Rio Brazos Rd., Aztec, NM 87410  
District IV - (505) 476-3460  
1220 S. St. Francis Dr., Santa Fe, NM 87505

State of New Mexico  
Energy, Minerals and Natural Resources

Form C-103  
Revised July 18, 2013

**HOBBS OCD**

OIL CONSERVATION DIVISION

OCT 17 2016

1220 South St. Francis Dr.  
Santa Fe, NM 87505

**RECEIVED**

WELL API NO. 30-025-05298
5. Indicate Type of Lease STATE <input type="checkbox"/> FEE <input checked="" type="checkbox"/>
6. State Oil & Gas Lease No. 18164
7. Lease Name or Unit Agreement Name Denton ✓
8. Well Number 11 ✓
9. OGRID Number 151416 ✓
10. Pool name or Wildcat Denton; Wolfcamp

<b>SUNDRY NOTICES AND REPORTS ON WELLS</b> (DO NOT USE THIS FORM FOR PROPOSALS TO DRILL OR TO DEEPEN OR PLUG BACK TO A DIFFERENT RESERVOIR. USE "APPLICATION FOR PERMIT" (FORM C-101) FOR SUCH PROPOSALS.)	
1. Type of Well: Oil Well <input checked="" type="checkbox"/> Gas Well <input type="checkbox"/> Other <input type="checkbox"/>	
2. Name of Operator Fasken Oil and Ranch, Ltd.	
3. Address of Operator 6101 Holiday Hill Road, Midland TX, 79707	
4. Well Location Unit Letter <u>B</u> : <u>660'</u> feet from the <u>North</u> line and <u>1815'</u> feet from the <u>East</u> line Section <u>11</u> Township <u>15S</u> Range <u>37E</u> NMPM County <u>Lea</u>	
11. Elevation (Show whether DR, RKB, RT, GR, etc.) 3795' GR	

12. Check Appropriate Box to Indicate Nature of Notice, Report or Other Data

<b>NOTICE OF INTENTION TO:</b> PERFORM REMEDIAL WORK <input type="checkbox"/> PLUG AND ABANDON <input checked="" type="checkbox"/> TEMPORARILY ABANDON <input type="checkbox"/> CHANGE PLANS <input type="checkbox"/> PULL OR ALTER CASING <input type="checkbox"/> MULTIPLE COMPL <input type="checkbox"/> DOWNHOLE COMMINGLE <input type="checkbox"/> CLOSED-LOOP SYSTEM <input type="checkbox"/> OTHER: <input type="checkbox"/>	<b>SUBSEQUENT REPORT OF:</b> REMEDIAL WORK COMMENCE DRILLING OPNS. <input type="checkbox"/> CASING/CEMENT JOB <input type="checkbox"/> OTHER: <input type="checkbox"/>
---	--

INT TO PA AMX  
P&A NR \_\_\_\_\_  
P&A R \_\_\_\_\_

13. Describe proposed or completed operations. (Clearly state all pertinent details, and give pertinent dates, including estimated date of starting any proposed work). SEE RULE 19.15.7.14 NMAC. For Multiple Completions: Attach wellbore diagram of proposed completion or recompletion.

Fasken Oil and Ranch, Ltd. Proposes to plug and abandon the Denton No. 11 as proposed on the attached procedure. Also attached is the current and proposed wellbore diagram.

**NOTIFY OCD 24 HOURS PRIOR TO BEGINNING PLUGGING OPERATIONS**

**NOTE CHANGES  
TO ATTACHED PROCEDURE**

Spud Date:  Rig Release Date:

I hereby certify that the information above is true and complete to the best of my knowledge and belief.

SIGNATURE Addison Long TITLE Regulatory Analyst DATE 10-13-16  
Type or print name Addison Long E-mail address: addisonl@forl.com PHONE: 432-687-1777  
**For State Use Only**  
APPROVED BY: Mark Whitaker TITLE Petroleum Engr. Specialist DATE 10/17/2016  
Conditions of Approval (if any):



Denton No. 11  
A.F.E. No. 3419  
Fasken Oil and Ranch, Ltd.  
659' FNL & 1837' FEL  
Sec. 11, T15S, R37E  
Lea County, NM

**OBJECTIVE:**

Plug and Abandon

**WELL DATA:**

13-3/8" 27.3 & 48# Armco Spiral Weld:	Set at 351'. Cmted w/ 350 sx, TOC surface.
8-5/8" 24, 28 & 32# J-55, H-40:	Set at 4649'. Cmted w/ 2450 sx w/ 8% gel + 150 sx neat. TOC surface.
5-1/2" 14, 15.5, & 17# J-55, N-80:	Set at 9552'. Cmted 1 <sup>st</sup> stg w/ 175 sx w/ 8% gel + 100 sx w/ 4% gel, circ 50 sx cmt to surface. 2 <sup>nd</sup> stg w/ 375 sx w/ 8% gel. TOC 4250' per temp survey.
GL:	3794.5'
RKB:	3807.5' (13' above GL)
TD:	9555'
PBTD:	9551' original (shoe), 9162' current (CIBP set 2/22/2012)
Perforations:	Wolfcamp 9478'-9530' (312h), squeezed- Mod K CR at 9468', 75 sx- 30 sx in formation, 9415'-9458' (258h), 9240'-9385' and 9090'-9210' (1590h total). Perfs 9090'-9458' were squeezed 05/1974. Reperforated 9100'-9140', 2 jsp (current perfs)

1. Make sure mast anchors have been tested and tagged within the last 24 months.
2. Notify NMOCD of intent to proceed with plugging job 72 hours prior to starting work. Confirm with Midland office (Addison Long/Jimmy Carlile) that pit permits have been obtained.
3. Set rig mats, 2 sets pipe racks, and catwalk. Set steel pit and lay lines. Be sure to have plenty of sugar on hand to keep cement from setting up in pit.
4. RUPU. POW with rods and pump. LD all rods and send pump in for inspection.
5. NDWH, NU 3k manual BOP, and release TAC. POW with tubing. Tally and stand back in derrick.
6. RUWL. RIW with 4.5" gauge ring and junk basket to 9075'. If obstruction is encountered notify Midland office. POW.
7. RIW with 5-1/2" 10k CIBP and set plug at 9050'. POW and PU dump bailer. Dump 35' cmt on top of CIBP. POW and RDWL.
8. RIW with 2-7/8" perforated sub and 2-7/8" EUE 8rd N-80 tubing from derrick open-ended and tag cement on top of CIBP at +/- 9015'. *Pressure test csg.*
9. Pick up 5' and pump enough mud laden brine with 12.5 lbs gel/bbl to bring top of mud up to 7790' (+/- 29 bbls).
10. POW and LD tubing with EOT at +/-7790'.
11. Pump enough mud laden brine with 12.5 lbs gel/bbl to bring top of mud up to 4730', followed by a 5 bbl fw spacer ahead of cement. Mix and spot 25 sx Class "H" cement (15.6 ppg, 1.18

ft<sup>3</sup>/sx yield) at 7790'. TOC should be +/- 7570'. Stand back 3000' of tubing in derrick and WOC 4 hours.

12. RIW with tubing and tag cement. Notify Midland office and NMOCD of results. If TOC is below 7640', mix and spot additional cement to achieve noted TOC.
13. POW and LD tubing to put EOT at 4730'.
14. Pump enough mud laden brine with 12.5 lbs gel/bbl to bring top of mud up to 2100', followed by a 5 bbl fw spacer ahead of cement. Mix and spot 25 sx Class "C" (14.8 ppg, 1.32 ft<sup>3</sup>/sx yield) with 2% CaCl<sub>2</sub> at 4730'. TOC should be +/- 4510'. Stand back 3000' of tubing in derrick and WOC 4 hours.
15. RIW with tubing and tag cement. Notify Midland office and NMOCD of results. If TOC is below 4599', mix and spot additional cement to achieve noted TOC.
16. POW and LD all but 1600' of tubing. Stand back remainder in derrick. *Base Salt Plug  
Perf @ 3100' 50% w/30sx  
WOC & TAG*
17. RUWL. RIW and perforate 5-1/2" casing at 2120' (4 holes, 1 jspf). POW and confirm shots fired. *T. ANHY*
18. RIW with 5-1/2" tension packer, SN, and tubing. Set packer at 1600'.
19. With 8-5/8" casing valve open to tank, attempt to establish circulation through squeeze perforations out 5-1/2" x 8-5/8" annulus.
20. Mix and spot 30 sx Class "C" with 2% CaCl<sub>2</sub> and displace to put TOC at +/- 1950' (plug should be 100' inside 5-1/2" casing and 100' in 5-1/2" x 8-5/8" annulus).
21. Release packer and POW standing back tubing in derrick. WOC 4 hours.
22. RIW with 2-3/8" perforated sub, 5-1/2" tension packer, SN, and tubing. Tag TOC and notify Midland office and NMOCD of results. If TOC is below 2020', mix and spot additional cement to achieve noted TOC.
23. Pick up 5' and displace well with mud laden brine with 12.5 lbs gel/bbl. POW with tubing and packer.
24. RUWL. RIW and perforate 5-1/2" casing at 450' (4 holes, 1 jspf). POW and confirm shots fired. RDWL.
25. RIW with tension packer and 1 jt tubing. Set packer.
26. Establish circulation out 5-1/2" x 8-5/8" annulus. Mix and pump Class "C" cement until cement is brought to surface out 5-1/2" x 8-5/8" annulus. POW with tubing and packer and back fill 5-1/2" casing with cement if necessary.
27. ND BOP, RDPU and clean location.
28. Empty steel pit, cut off mast anchors, release all rental equipment.
29. Cut off casing 3' below ground level. *VERIFY CMT TO SURFACE ALL STRINGS*
30. Weld cap and dry hole marker on top of 13-3/8" casing stub. Install 1" 2000 psi ball valve on top of dry hole marker plate. Marker plate should contain the following information: Fasken Oil and Ranch, Ltd. Denton No. 11, Section 11, T15S, R37E, 659' FNL & 1837' FEL, Unit B.
31. Clean location and remediate per NMOCD requirements.



**Denton No. 11**  
**Fasken Oil and Ranch, Ltd.**

Location: 659' FNL, 1837' FEL  
Sec 11, T15S, R37E  
Lea County, New Mexico

Compl.: 22-Mar-52  
API #: 30-025-05298  
IP: 400 BOPD + 0 BWPD  
TD: 9555'  
PBD: CIBP @ 9162'

Casing: 13-3/8", 27.3, 48# Armco Spiral Weld @ 351.68'  
Cmt 350 sx  
TOC surf  
8-5/8", 24, 28 & 32# J-55, H-40 @ 4649'  
Cmt 2450 sx 8% gel + 150 sx neat  
TOC surf  
5-1/2" 14, 15.5, 17# J-55, N-80 @ 9,552.31'  
Cmt 1st stg 175sx 8% gel+100sx 4% gel  
Circ 50 sx thru DV  
Cmt 2nd stg w/375 sx 8% gel  
TOC 4250' by temp survey

DV: 7690'

**Initial Completion Well Test**

9478-9530' - A 500 gal. Swb 4 BW, dry  
9415'-9458' - Swb 8BO. A 500gal, Swb 15BO dry. A 1500 gal Swb 65BO  
9090'-9210' - Flw 87BO. A 500gal. Flw 247BO 15hr  
9240'-9385' - A 1000 gal. Flw 87 BO

**Hole Sizes**

17-1/4" 0'-352'  
11" 352'-4650'  
7-7/8" 4650'-9555'

Packer: Baker 415-D @ 9225' (4-16-52)  
Baker 415-D-4 pushed to 9225' (4/29/74)

**Perfs/plugs:**

9100'-9140' reperf (80h 5-3-74)  
9090'-9210' Sqzd 45sx (870h 4-15-52)  
9240'-9385' Sqz 45 sx (720h 4-15-52)  
9415'-9458' sqzd 13 sx (258h 4-6-52)  
Cmt Ret: 9468'  
9478'-9530 sqzd 30sx (312h 3-28-52)

9100'-9140' - 0BOPD + 300BWPD 9-9-75. SI  
Return to prod 03/2012- 5 BOPD + 800 BWPD

**Current**

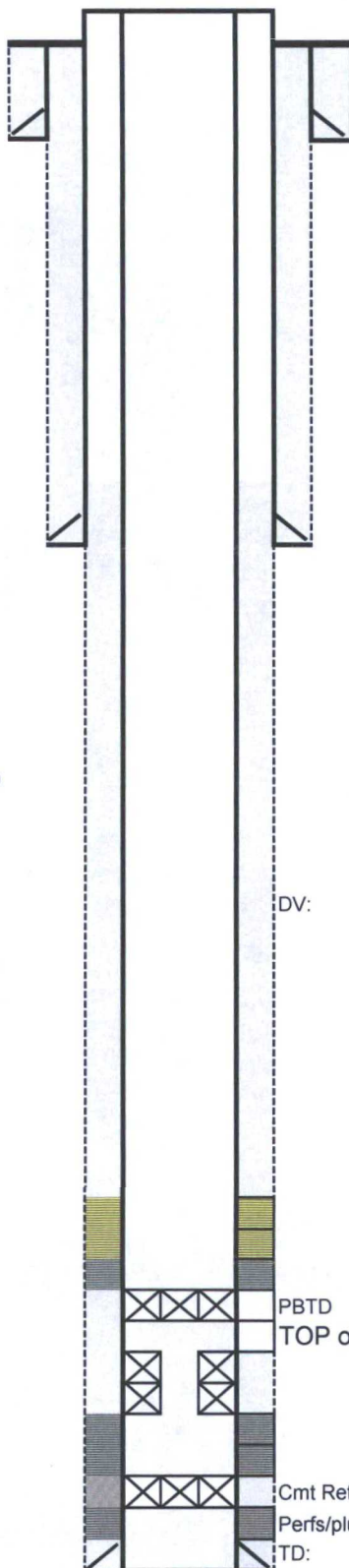
As of: 9/1/16  
DF: 3805'

13-3/8", 27.3, 48# Armco Spiral Weld @ 351.68'  
Cmt 350 sx  
TOC surf

8-5/8", 24, 28 & 32# J-55, H-40 @ 4649'  
Cmt 2450 sx 8% gel + 150 sx neat  
TOC surf

*APPROX. DEPTHS*  
*T. ANHY 2130'*  
*B. SALT 3100'*

DV: 7690'



Prf 9090'-9210' Sqzd 45sx  
Prf 9100'-9140' reperf

PBD CIBP @ 9162'  
TOP of SQZ CMT @ 9170'

Pkr Baker 415-D-4 pushed to 9225' (4/29/74)  
Pkr Baker 415-D @ 9225' (4-16-52)  
Prf 9240'-9385' Sqz 45 sx  
Prf 9415'-9458' sqzd 13 sx

Cmt Ret: 9468'  
Perfs/plugs: 9478'-9530 sqzd 30sx  
TD: 9555'

5-1/2" 14, 15.5, 17# J-55, N-80 @ 9,552.31'  
TOC 4250' by temp survey

**Denton No. 11**  
**Fasken Oil and Ranch, Ltd.**

Location: 659' FNL, 1837' FEL  
 Sec 11, T15S, R37E  
 Lea County, New Mexico

Compl.: 22-Mar-52  
 API #: 30-025-05298  
 IP: 400 BOPD + 0 BWPD  
 TD: 9555'  
 PBTD: CIBP @ 9162'

Casing: 13-3/8", 27.3, 48# Armco Spiral Weld @ 351.68'  
 Cmt 350 sx  
 TOC surf  
 8-5/8", 24, 28 & 32# J-55, H-40 @ 4649'  
 Cmt 2450 sx 8% gel + 150 sx neat  
 TOC surf  
 5-1/2" 14, 15.5, 17# J-55, N-80 @ 9,552.31'  
 Cmt 1st stg 175sx 8% gel+100sx 4% gel  
 Circ 50 sx thru DV  
 Cmt 2nd stg w/375 sx 8% gel  
 TOC 4250' by temp survey

DV: 7690'

**Initial Completion Well Test**

9478-9530' - A 500 gal. Swb 4 BW, dry  
 9415'-9458' - Swb 8BO. A 500gal, Swb 15BO dry. A 1500 gal Swb 65BO  
 9090'-9210' - Flw 87BO. A 500gal. Flw 247BO 15hr  
 9240'-9385' - A 1000 gal. Flw 87 BO

**Hole Sizes**

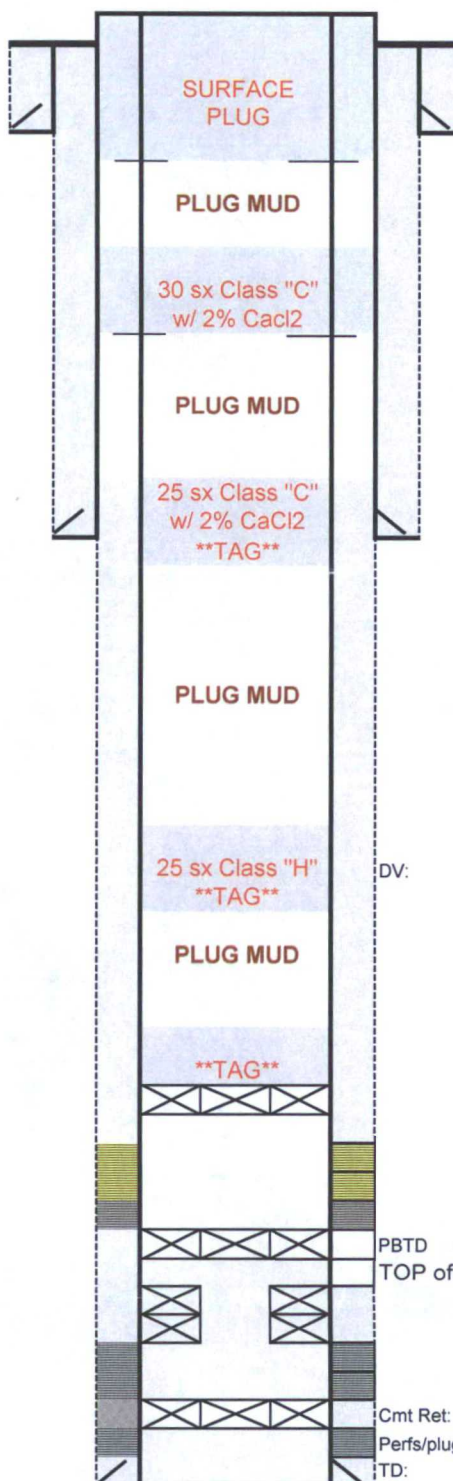
17-1/4" 0'-352'  
 11" 352'-4650'  
 7-7/8" 4650'-9555'

Packer: Baker 415-D @ 9225' (4-16-52)  
 Baker 415-D-4 pushed to 9225' (4/29/74)

**Perfs/plugs:**

9100'-9140' reperf (80h 5-3-74)  
 9090'-9210' Sqzd 45sx (870h 4-15-52)  
 9240'-9385' Sqz 45 sx (720h 4-15-52)  
 9415'-9458' sqzd 13 sx (258h 4-6-52)  
 Cmt Ret: 9468'  
 9478'-9530 sqzd 30sx (312h 3-28-52)

9100'-9140' - 0BOPD + 300BWPD 9-9-75. SI  
 Return to prod 03/2012- 5 BOPD + 800 BWPD



**PROPOSED**

As of: 9/28/16  
 DF: 3805'

13-3/8", 27.3, 48# Armco Spiral Weld @ 351.68'  
 Cmt 350 sx

**TOC surf**

4 squeeze holes 450'

**PLUG MUD FROM 1950'-450'**

30 sx "C" from 1950'-2120'  
 4 squeeze holes 2120'

**PLUG MUD FROM 2120'-4510'**

25 sx "C" from 4510'-4730'

8-5/8", 24, 28 & 32# J-55, H-40 @ 4649'  
 Cmt 2450 sx 8% gel + 150 sx neat  
**TOC surf**

**PLUG MUD FROM 4730'-7570'**

25 sx "H" from 7570'-7790' (+/- 220')

DV: 7690'

**PLUG MUD FROM 7790'-9015'**

35' dump bailed cmt  
 CIBP to be set @ 9050'

Prf 9090'-9210' Sqzd 45sx  
 Prf 9100'-9140' reperf

PBTD CIBP @ 9162'  
 TOP of SQZ CMT @ 9170'

Pkr Baker 415-D-4 pushed to 9225' (4/29/74)  
 Pkr Baker 415-D @ 9225' (4-16-52)  
 Prf 9240'-9385' Sqz 45 sx  
 Prf 9415'-9458' sqzd 13 sx

Cmt Ret: 9468'  
 Perfs/plugs: 9478'-9530 sqzd 30sx  
 TD: 9555'

5-1/2" 14, 15.5, 17# J-55, N-80 @ 9,552.31'  
**TOC 4250' by temp survey**