

Exhibit 1(a)

French Dr., Hobbs, NM 88240
(575) 393-6161 Fax: (575) 393-0720

DISTRICT II
811 S. First St., Artesia, NM 88210
Phone: (575) 748-1283 Fax: (575) 748-9720

DISTRICT III
1000 Rio Brazos Road, Aztec, NM 87410
Phone: (505) 334-6178 Fax: (505) 334-6170

DISTRICT IV
1220 S. St. Francis Dr., Santa Fe, NM 87505
Phone: (505) 476-3460 Fax: (505) 476-3462

State of New Mexico
Energy, Minerals & Natural Resources Department

OIL CONSERVATION DIVISION

1220 South St. Francis Dr.
Santa Fe, New Mexico 87505

HOBBS OCD

OCT 27 2016

RECEIVED

Form C-102

Revised August 1, 2011

Submit one copy to appropriate
District Office

AMENDED REPORT

WELL LOCATION AND ACREAGE DEDICATION PLAT

API Number 30-025-43466	Pool Code 27220	Pool Name Gem; Bone Spring
Property Code 317070	Property Name TONTO FEDERAL COM.	Well Number 2H
OGRID No. 155615	Operator Name NADEL AND GUSSMAN PERMIAN LLC.	Elevation 3567'

Surface Location

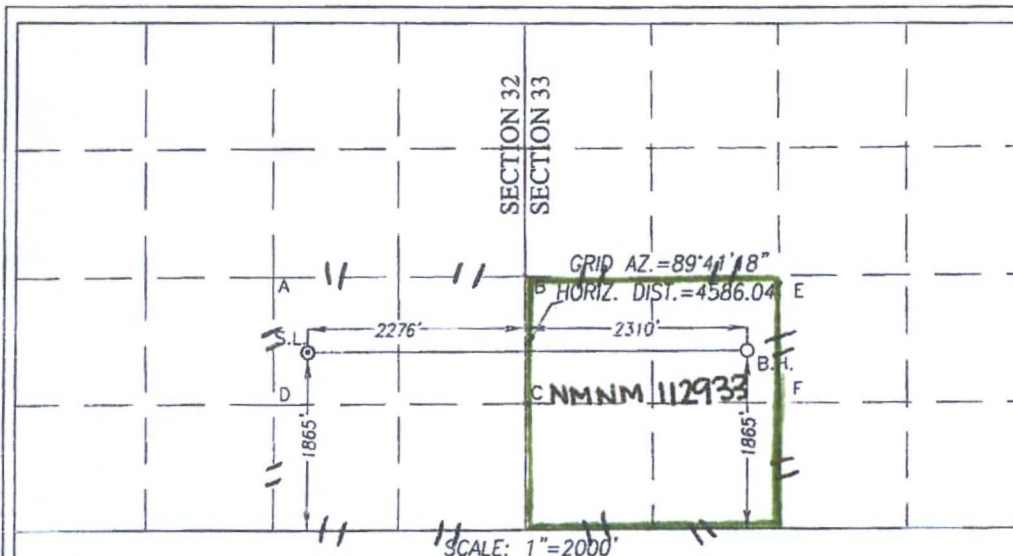
UL or lot No.	Section	Township	Range	Lot Idn	Feet from the	North/South line	Feet from the	East/West line	County
J	32	19-S	33-E		1865	SOUTH	2276	EAST	LEA

Bottom Hole Location If Different From Surface

UL or lot No.	Section	Township	Range	Lot Idn	Feet from the	North/South line	Feet from the	East/West line	County
K	33	19-S	33-E		1865	SOUTH	2310	WEST	LEA

Dedicated Acres	Joint or Infill	Consolidation Code	Order No.
160			

NO ALLOWABLE WILL BE ASSIGNED TO THIS COMPLETION UNTIL ALL INTERESTS HAVE BEEN CONSOLIDATED OR A NON-STANDARD UNIT HAS BEEN APPROVED BY THE DIVISION



GEODETIC COORDINATES
NAD 27 NME

SURFACE LOCATION
Y=587872.4 N
X=700038.6 E

LAT.=32.614485° N
LONG.=103.683672° W

BOTTOM HOLE LOCATION
Y=587897.3 N
X=704623.5 E

CORNER COORDINATES TABLE

A - Y=588647.3 N, X=699670.9 E
B - Y=588661.4 N, X=702311.1 E
C - Y=587340.8 N, X=702316.2 E
D - Y=587326.6 N, X=699676.4 E
E - Y=588673.8 N, X=704955.6 E
F - Y=587353.8 N, X=704963.0 E

OPERATOR CERTIFICATION

I hereby certify that the information herein is true and complete to the best of my knowledge and belief, and that this organization either owns a working interest or unleased mineral interest in the land including the proposed bottom hole location or has a right to drill this well at this location pursuant to a contract with an owner of such mineral or working interest, or to a voluntary pooling agreement or a compulsory pooling order heretofore entered by the division.

Signature _____ Date _____
Jason Goss
Printed Name
jgoss@naguss.com
E-mail Address

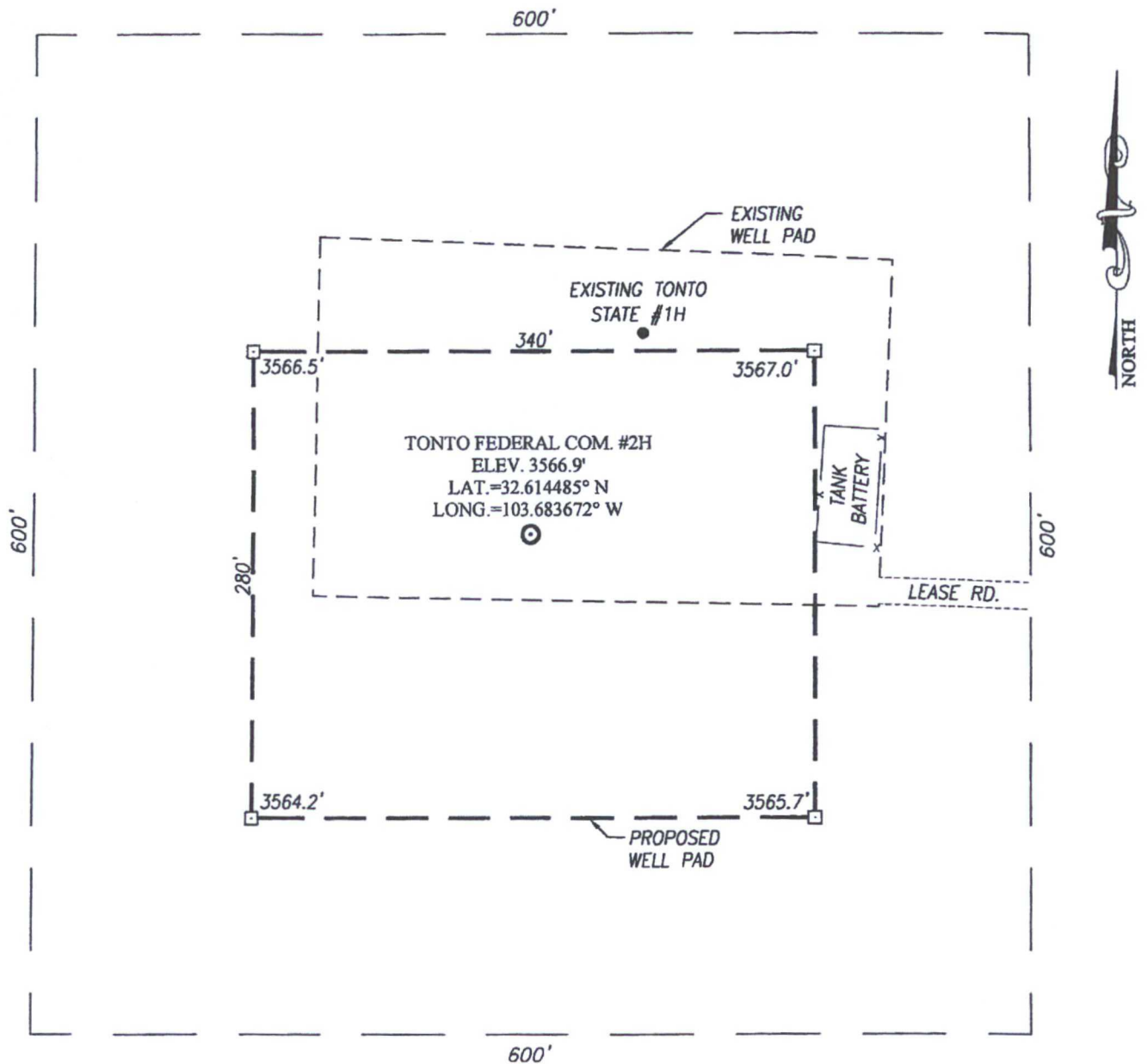
SURVEYOR CERTIFICATION

I hereby certify that the well location shown on this plat was plotted from field notes of actual surveys made by me or under my supervision, and that the same is true and correct to the best of my belief.

AUGUST 12, 2013

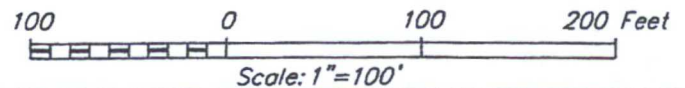
Date of Survey
Signature & Seal of Professional Surveyor

Ronald J. Eidson
NEW MEXICO
3239
Certificate Number 12641
J. G. Eidson
J. G. Eidson 3239
LSL Rel. W.O. 13.11.0913 JWSC W.O. 14.13.0565



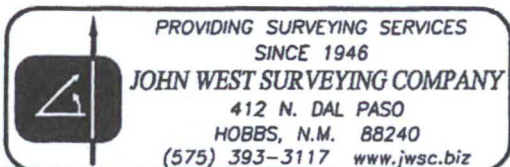
DIRECTIONS TO LOCATION

FROM THE INTERSECTION OF U.S. HIGHWAY 62-180 AND SMITH RANCH ROAD, GO NORTHWEST ON SMITH RANCH ROAD FOR APPROX. 2 MILES. TURN LEFT AND GO WEST ON MAIN LEASE ROAD 3.2 MILES. THEN NORTH APPROX. 0.8 MILES. TURN LEFT AT LEASE ROAD AND GO 0.1 MILE TO THIS LOCATION ON AN EXISTING WELL PAD FOR TONGO STATE #1H.



NADEL AND GUSSMAN PERMIAN LLC.

TONGO FEDERAL COM. #2H WELL
 LOCATED 1865 FEET FROM THE SOUTH LINE
 AND 2276 FEET FROM THE EAST LINE OF SECTION 32,
 TOWNSHIP 19 SOUTH, RANGE 33 EAST, N.M.P.M.,
 LEA COUNTY, NEW MEXICO



Survey Date: 8/12/13

CAD Date: 6/2/14

Drawn By: LSL

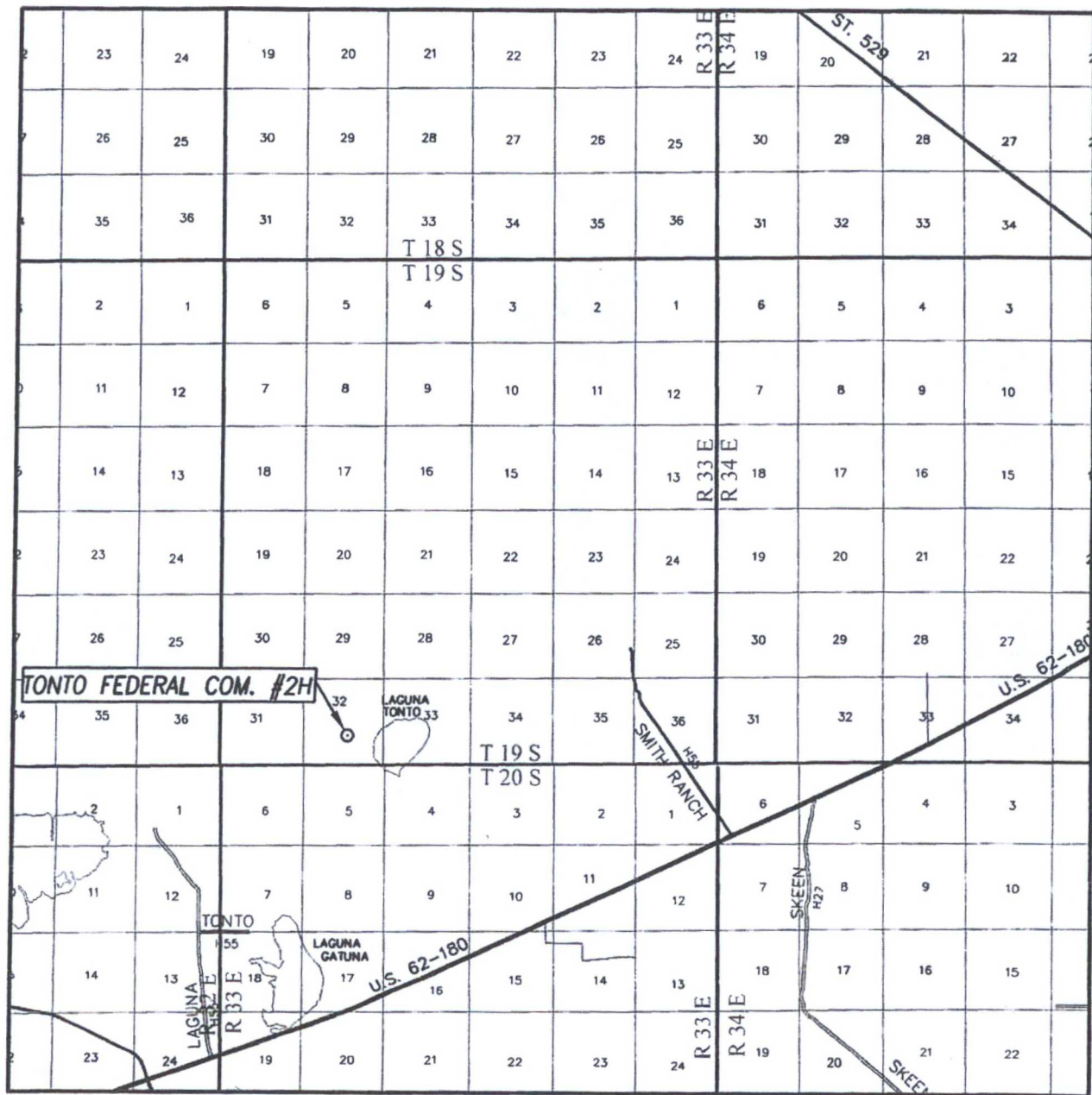
W.O. No.: 14130565

Rev: .

Rel. W.O.: 13110913

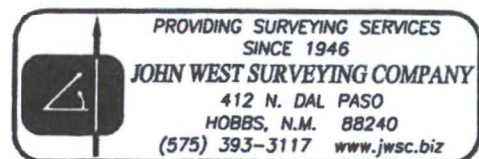
Sheet 1 of 1

VICINITY MAP

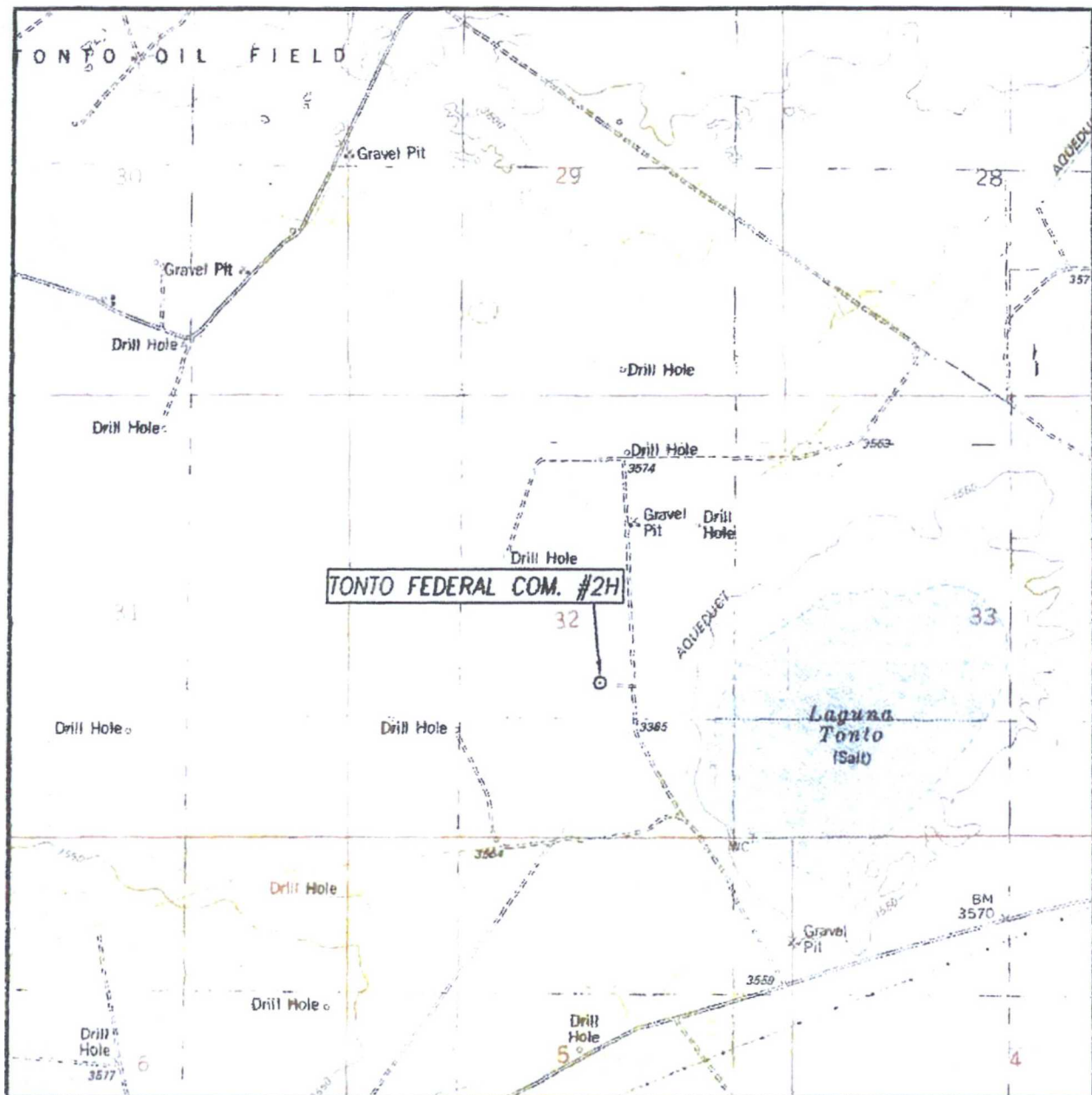


SCALE: 1" = 2 MILES

SEC. 32 TWP. 19-S RGE. 33-E
 SURVEY N.M.P.M.
 COUNTY LEA STATE NEW MEXICO
 DESCRIPTION 1865' FSL & 2276' FEL
 ELEVATION 3567'
 OPERATOR NADEL AND GUSSMAN
PERMIAN LLC.
 LEASE TONTO FEDERAL COM.



LOCATION VERIFICATION MAP



SCALE: 1" = 2000'

CONTOUR INTERVAL:
LAGUNA GATUNA, N.M. - 10'
LAGUNA GATUNA NW, N.M. - 10'

SEC. 32 TWP. 19-S RGE. 33-E

SURVEY N.M.P.M.

COUNTY LEA STATE NEW MEXICO

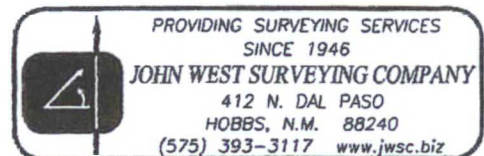
DESCRIPTION 1865' FSL & 2276' FEL

ELEVATION 3567'

OPERATOR NADEL AND GUSSMAN PERMIAN LLC.

LEASE TONGO FEDERAL COM.

U.S.G.S. TOPOGRAPHIC MAP
LAGUNA GATUNA, N.M.



T19.0S-R33.0E

30

29

28

27

31

32

33

34

6

5

4

3

