

NM OIL CONSERVATION

ARTESIA DISTRICT

State of New Mexico

Energy, Minerals and Natural Resources Department

Form C-102

Revised August 1, 2011

DISTRICT I

1625 N. French Dr., Hobbs, NM 88240
Phone (575) 393-6181 Fax: (575) 393-0720

DISTRICT II

811 S. First St., Artesia, NM 88210
Phone (575) 746-1253 Fax: (575) 746-0720

DISTRICT III

1000 Rio Brazos Rd., Aztec, NM 87410
Phone (505) 334-6178 Fax: (505) 334-6170

DISTRICT IV

1220 S. St. Francis Dr., Santa Fe, NM 87505
Phone (505) 476-3480 Fax: (505) 476-3482

OCT 20 2016

RECEIVED

OIL CONSERVATION DIVISION

1220 South St. Francis Dr.
Santa Fe, New Mexico 87505

RECEIVED

Submit one copy to appropriate District Office

WELL LOCATION AND ACREAGE DEDICATION PLAT

☐ AMENDED REPORT

API Number 30-025-42188	Pool Code 9797895	Pool Name WC-025 G-081 Bone Spring
Property Code 40238	Property Name TANGO BTP STATE COM	Well Number 2H
OGRID No. 025575	Operator Name YATES PETROLEUM CORPORATION	Elevation 3679

Surface Location

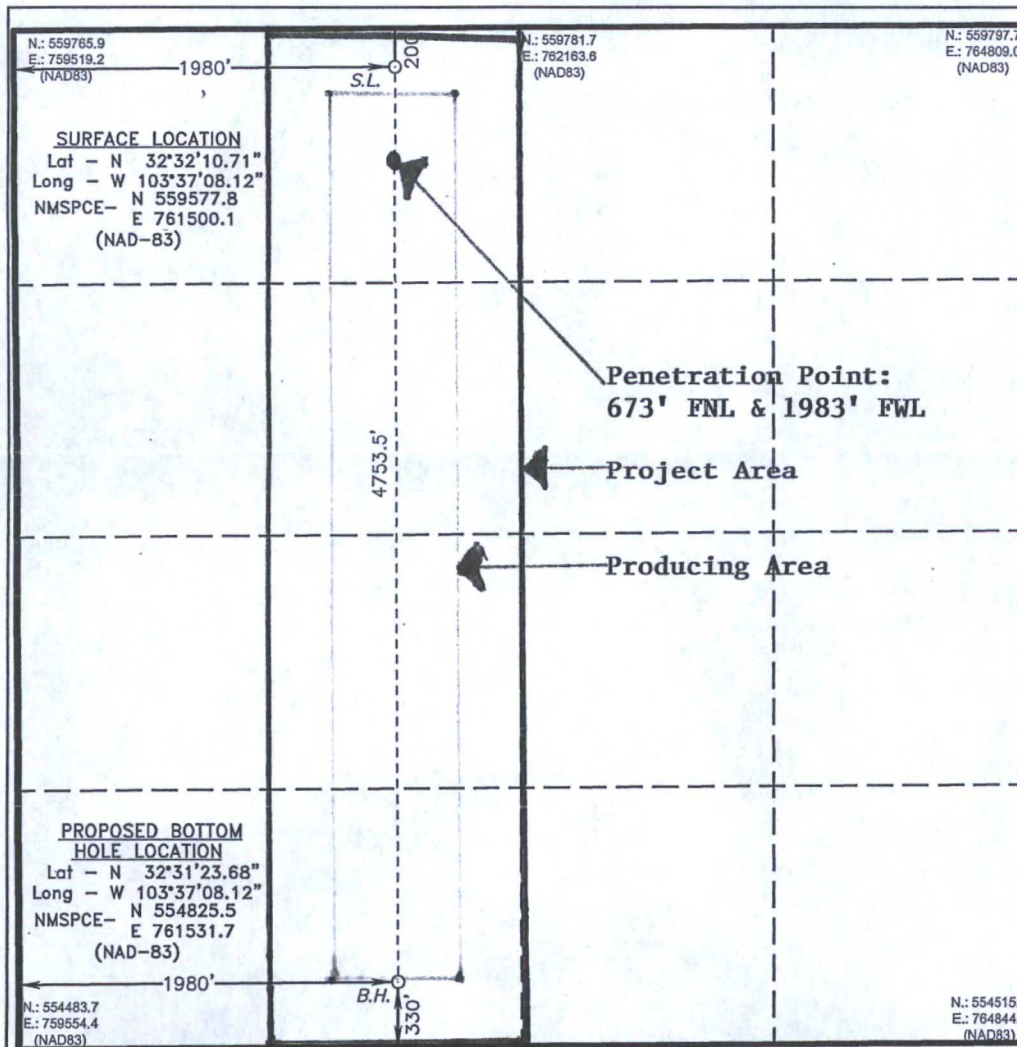
UL or lot No.	Section	Township	Range	Lot Idn	Feet from the	North/South line	Feet from the	East/West line	County
C	36	20 S	33 E		200	NORTH	1980	WEST	LEA

Bottom Hole Location If Different From Surface

UL or lot No.	Section	Township	Range	Lot Idn	Feet from the	North/South line	Feet from the	East/West line	County
N	36	20 S	33 E		330	SOUTH	1980	WEST	LEA

Dedicated Acres	Joint or Infill	Consolidation Code	Order No.
160.00			

NO ALLOWABLE WILL BE ASSIGNED TO THIS COMPLETION UNTIL ALL INTERESTS HAVE BEEN CONSOLIDATED OR A NON-STANDARD UNIT HAS BEEN APPROVED BY THE DIVISION



OPERATOR CERTIFICATION

I hereby certify that the information contained herein is true and complete to the best of my knowledge and belief, and that this organization either owns a working interest or UNLEASed mineral interest in the land including the proposed bottom hole location or has a right to drill this well at this location pursuant to a contract with an owner of such a mineral or working interest, or to a voluntary pooling agreement or a compulsory pooling order heretofore entered by the division.

Signature: Travis Hahn Date: 10/1/14

Printed Name: Travis Hahn
Email Address: thahn@yatespetroleum.com

SURVEYOR CERTIFICATION

I hereby certify that the well location shown on this plat was plotted from field notes of actual surveys made by me or under my supervision, and that the same is true and correct to the best of my belief.

Date Surveyed: OCTOBER 10 2013
Signature of Professional Surveyor: [Signature]
Certificate No.: 7977
Professional Surveyor: GARY L. BONES

Scale: 1" = 1000'
WO Num.: 29573