

DISTRICT I
1625 N French Dr., Hobbs, NM 88240
Phone: (575) 393-6161 Fax: (575) 393-0720

DISTRICT II
811 S. First St., Artesia, NM 88210
Phone: (575) 748-1283 Fax: (575) 748-9720

DISTRICT III
1000 Rio Brazos Road, Aztec, NM 87410
Phone: (505) 334-6178 Fax: (505) 334-6170

DISTRICT IV
1220 S. St. Francis Dr., Santa Fe, NM 87505
Phone: (505) 476-3460 Fax: (505) 476-3462

State of New Mexico
Energy, Minerals & Natural Resources Department
OIL CONSERVATION DIVISION
1220 South St. Francis Dr.
Santa Fe, New Mexico 87505

HOBBS OCD
OCT 27 2016
RECEIVED

Form C-102
Revised August 1, 2011
Submit one copy to appropriate
District Office

DAMENDED REPORT

WELL LOCATION AND ACREAGE DEDICATION PLAT

API Number 30-035-42932	Pool Code 97899	Pool Name WC-035 G-06 52633004; Bone Spring
Property Code 715311	Property Name OUTRIDER FEDERAL	Well Number 6H
OGRID No. 005380	Operator Name XTO ENERGY	Elevation 3587'

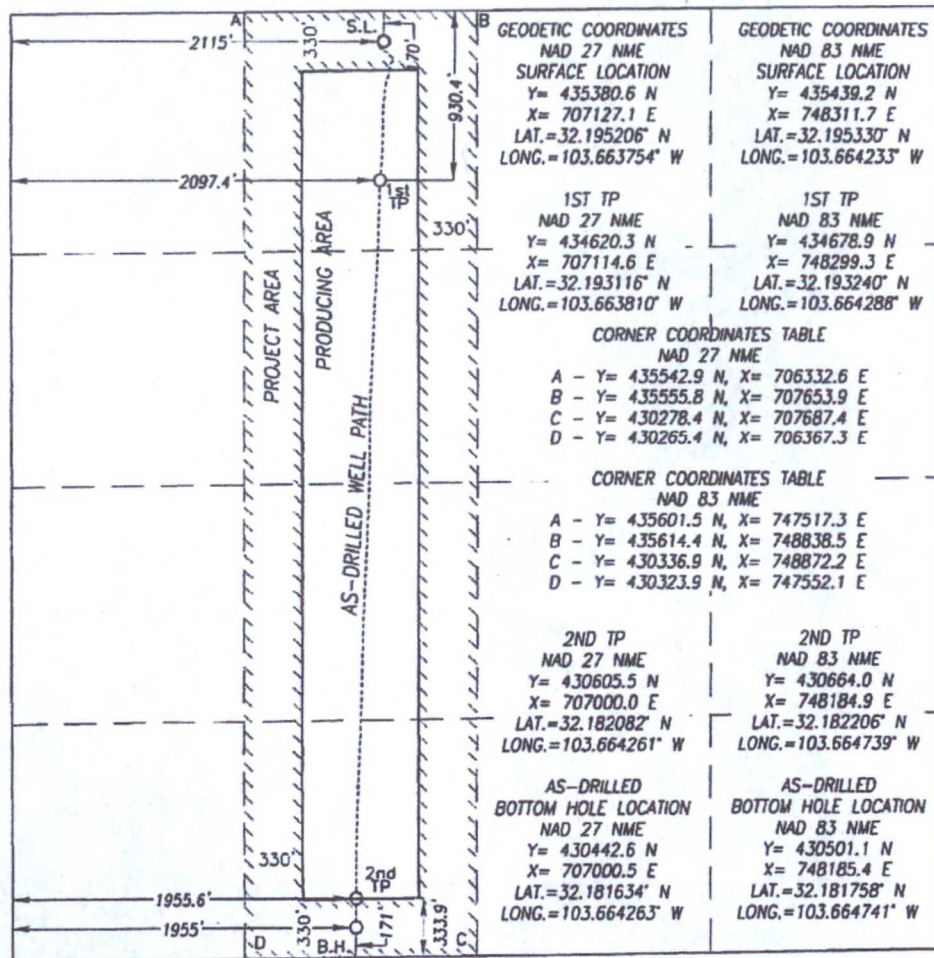
Surface Location

UL or lot No.	Section	Township	Range	Lot Idn	Feet from the	North/South line	Feet from the	East/West line	County
C	27	24-S	32-E		170	NORTH	2115	WEST	LEA

As-Drilled Bottom Hole Location If Different From Surface

UL or lot No.	Section	Township	Range	Lot Idn	Feet from the	North/South line	Feet from the	East/West line	County
N	27	24-S	32-E		171	SOUTH	1955	WEST	LEA
Dedicated Acres 11.60	Joint or Infill	Consolidation Code	Order No.						

NO ALLOWABLE WILL BE ASSIGNED TO THIS COMPLETION UNTIL ALL INTERESTS HAVE BEEN CONSOLIDATED OR A NON-STANDARD UNIT HAS BEEN APPROVED BY THE DIVISION



<p>OPERATOR CERTIFICATION</p> <p>I hereby certify that the information herein is true and complete to the best of my knowledge and belief, and that this organization either owns a working interest or unleased mineral interest in the land including the proposed bottom hole location or has a right to drill this well at this location pursuant to a contract with an owner of such mineral or working interest, or to a voluntary pooling agreement or a compulsory pooling order heretofore entered by the division.</p> <p>Signature: <i>Stephanie Rabadue</i> Date: <i>7-27-16</i></p> <p>Printed Name: <i>Stephanie Rabadue</i></p> <p>E-mail Address: <i>Stephanie.Rabadue@xtoenergy.com</i></p>	
<p>SURVEYOR CERTIFICATION</p> <p>I hereby certify that the well location shown on this plat was plotted from field notes of actual surveys made by me or under my supervision, and that the same is true and correct to the best of my belief.</p> <p>JULY 12, 2016</p> <p>Date of Survey</p> <p>Signature & Seal of Professional Surveyor:</p> <p><i>Ronald J. Eidson</i> 7/12/2016</p> <p>Certificate Number: <i>Gary G. Eidson 12641</i> <i>Ronald J. Eidson 3239</i></p> <p>LSL REL WOH 14.11.0401 JWSC W.O. 1c.13.0333</p>	