

Submit 1 Copy To Appropriate District Office
District I - (575) 393-6161
625 N. French Dr., Hobbs, NM 88240
District II - (575) 748-1283
811 S. First St., Artesia, NM 88210
District III - (505) 334-6178
1000 Rio Brazos Rd., Aztec, NM 87410
District IV - (505) 476-3460
1220 S. St. Francis Dr., Santa Fe, NM 87505

State of New Mexico

Energy, Minerals and Natural Resources

Form C-103
Revised July 18, 2013

HOBBS OGD

NOV 23 2016

RECEIVED

OIL CONSERVATION DIVISION

1220 South St. Francis Dr.
Santa Fe, NM 87505

WELL API NO. 30-025-37898
5. Indicate Type of Lease STATE <input type="checkbox"/> FEE <input checked="" type="checkbox"/>
6. State Oil & Gas Lease No.
7. Lease Name or Unit Agreement Name Bois d Arc
8. Well Number #1
9. OGRID Number 371127
10. Pool name or Wildcat Foster (San Andres)

SUNDRY NOTICES AND REPORTS ON WELLS
(DO NOT USE THIS FORM FOR PROPOSALS TO DRILL OR TO DEEPEN OR PLUG BACK TO A DIFFERENT RESERVOIR. USE "APPLICATION FOR PERMIT" (FORM C-101) FOR SUCH PROPOSALS.)

1. Type of Well: Oil Well ☒ Gas Well ☐ Other

2. Name of Operator
Black Mountain Operating LLC

3. Address of Operator
500 Main Street Suite 500, Fort Worth, TX 76102

4. Well Location

Unit Letter L : 1980 feet from the South line and 660 feet from the West line
Section 31 Township 18S Range 39E NMPM Lea County

11. Elevation (Show whether DR, RKB, RT, GR, etc.)
3600' GR

12. Check Appropriate Box to Indicate Nature of Notice, Report or Other Data

NOTICE OF INTENTION TO:

PERFORM REMEDIAL WORK ☐ PLUG AND ABANDON ☐
TEMPORARILY ABANDON ☐ CHANGE PLANS ☐
PULL OR ALTER CASING ☐ MULTIPLE COMPL ☐
DOWNHOLE COMMINGLE ☐
CLOSED-LOOP SYSTEM ☐
OTHER: ☐

SUBSEQUENT REPORT OF:

REMEDIAL WORK ☐ ALTERING CASING ☐
COMMENCE DRILLING OPNS. ☐ P AND A ☐
CASING/CEMENT JOB ☐
OTHER: ☒

13. Describe proposed or completed operations. (Clearly state all pertinent details, and give pertinent dates, including estimated date of starting any proposed work). SEE RULE 19.15.7.14 NMAC. For Multiple Completions: Attach wellbore diagram of proposed completion or recompletion.

Plug back and test interval from 4,410'-4,440'

- 11/2/16 - MIRU PU. ND WH NU BOP. TOOHD LD pump and rods. POOH 4,491' 2-7/8" tbg standing back.
- 11/3/16 - MIRU WL. NU Lubricator and RIH with dump bailer. Dump 36' cmt plug on CIBP @ 4,596. PBTD now ~4,484'.
- 11/3/16 - POOH LD Bailer. PU 5.5" CIBP. RIH and set CIBP @ 4,455'.
- 11/3/16 - PU 3-1/8" csg guns and perforate 4 spf 90 deg phasing from 4,410-4,440'. POOH LD perf guns. RDMO WL.
- 11/3/16 - RBIH 2-7/8 tbg to 4,410'. Prepare to swab.
- 11/3/2016 - FL @ 250', made 4 runs recovering 35 bbl fluid, left fluid at 1,700' from surface. SDFN
- 11/4/2016 - FL @ 1,700' from surface, made 8 runs recovering 16 bbl fluid, left FL @ 4,440'. No entry after 2 hrs. SDFN.
- 11/7/2016 - FL @ 4,400'. POOH LD swab equip. POOH 136 jts tbg. PU 5-1/2" pkr and RIH. Set pkr @ 4,320'. Test annulus to 500 psi. Pump 5 bbl 2% KCL @ 2bpm. Formation broke at 2,023 psi. Pump 1000 gal 15% NEFE HCl and 200 1.3 ball sealers. Displaced with 25 bbl 2% KCL. Bled pressure. Released pkr and revers out w/10 bl 2% KCL. Reset pkr @ 4,320'. Well on vacuum. SDFN
- 11/8/2016 - Well on vacuum. RU swab and tag FL @ 850'. Made 12 runs recovering 69 bbl. FL @ 3,308'. Made 12 more runs recovering 92 bbl. FL @ 3,300'. SDFN
- 11/9/2016 - Well on vacuum. RU swab. FL @ 3,330'. Made 11 runs recovering 52 bbl. No show of oil or gas.
- 11/9/2016 - POOH swab equipment. Unset pkr and POOH tbg. LD pkr. RBIH tbg to ~4,378'. ND BOP NU WH. SWI & RDMO.
- Due to plug and perf spacing 35' cmt plug will not be spotted on CIBP @ 4,455' until well is ready for P&A.

NEW / pro
PERFS

↑ PBTD 11/3/2016

Spud Date:

Rig Release Date:

I hereby certify that the information above is true and complete to the best of my knowledge and belief.

SIGNATURE

John Wiertowiecki

TITLE

Operations Manager

DATE

11/17/2016

Type or print name

John Wiertowiecki

E-mail address:

john.wiertowiecki@blackmt.com

PHONE:

(817) 529-9489

For State Use Only

APPROVED BY:

Mary Brown

TITLE

Dist Supervisor

DATE

11/23/2016

Conditions of Approval (if any):

Black Mountain Operating

500 Main Street Suite 1200

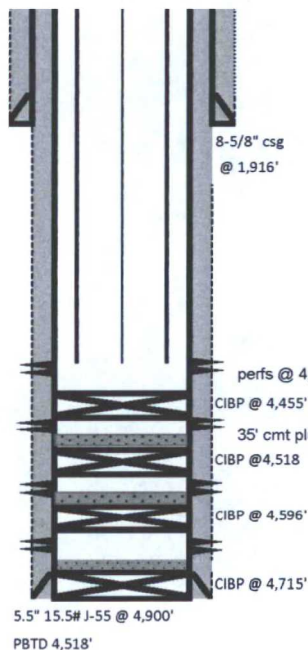
Fort Worth, Texas 76102



Actual Wellbore Schematic

Lease:	Bois d'Arc #1	OH Information					
County/Parish:	Lea	Section	Size	Beg. Depth	End Depth	MW	Comments
State:	NM						
API:	30-025-37898	Surface	12-1/4"	Surface	1,916'		68 sks
State Lease #:		Production	7-7/8"	Surface	4900		650 sks
SHL Legal:	1980' FSL & 660' FWL L-31-18S-39E						
Spud Date:	4/3/2007	Casing Information					
Rig Release:		Size	Weight	Grade	Thread	Depth	ID
Comments:							Drift
GR = 3600'							Collapse
							Burst
							bbl / ft
		8-5/8"	24.00	J-55	8rd STC	1,916	8.097
		5-1/2"	15.50	J-55	8rd	4,900	4.950
		Tubing Information					
		Comments:					

Cement Information		
	8-5/8"	5-1/2"
Spacer		
Volume, bbl		
Density, lb/gal		
Lead Cement 1	68sks	650 sks
Sacks		
Yield, ft ³ /sk		
Volume, ft ³		
Density, lb/gal		
Tail Cement 1		
Sacks		
Yield, ft ³ /sk		
Volume, ft ³		
Density, lb/gal		
Est TOC, ft		
Calc or Actual		
CBL TOC		



Tbg Detail (approximate depths)				
Description	OD	ID	Length	Depth
2-7/8" tbg, SN on bot, No TAC	2.875		4378.0	4378

Rod Parts

Date Off RTP Date Depth Comments

5.5" 15.5# J-55 @ 4,900'
PBD 4,518'

Perforations				
Depth	Length	SPF	# holes	
4,410'	4,440'	30'	4'	120'
4,464'	4,488'	24'		
4,523'	4,584'	61'		
4,604'	4,695'	91'		

Proposed
Current
Abandoned
Abandoned

Last Update: 11/17/2016

Black Mountain Operating

500 Main Street Suite 1200

Fort Worth, Texas 76102



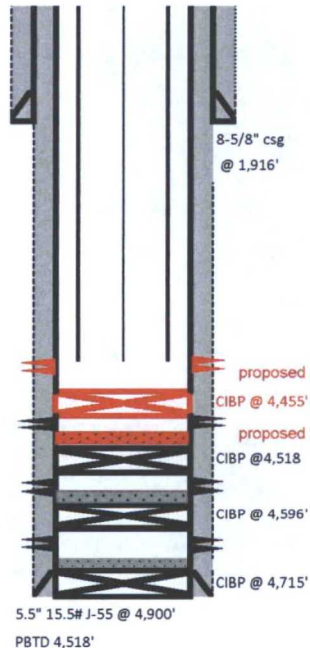
Proposed Wellbore Schematic

Lease:	Bois d'Arc #1	OH Information									
County/Parish:	Lea	Section	Size	Beg. Depth		End Depth	MW	Comments			
State:	NM										
API:	30-025-37898	Surface	12-1/4"	Surface		1,916'		68 sks			
State Lease #:		Production	7-7/8"	Surface		4900		650 sks			
SHL Legal:	1980' FSL & 660' FWL L-31-18S-39E										
Spud Date:	4/3/2007	Casing Information									
Rig Release:		Size	Weight	Grade	Thread	Depth	ID	Drift	Collapse	Burst	bbl / ft
Comments:											
GR = 3600'		8-5/8"	24.00	J-55	8rd STC	1,916	8.097				
		5-1/2"	15.50	J-55	8rd	4,900	4.950				0.0238
		Tubing Information									
		Comments:									

Cement Information			
	8-5/8"	5-1/2"	
Spacer			
Volume, bbl			
Density, lb/gal			
Lead Cement 1	68sks	650 sks	
Sacks			
Yield, ft ³ /sk			
Volume, ft ³			
Density, lb/gal			
Tail Cement 1			
Sacks			
Yield, ft ³ /sk			
Volume, ft ³			
Density, lb/gal			
Est TOC, ft			
Calc or Actual			
CBL TOC			

Rod Parts

Date Off	RTP Date	Depth	Comments



Tbg Detail (approximate depths)				
Description	OD	ID	Length	Depth

Perforations				
Depth	Length	SPF	# holes	
4,410'	4,440'	30'	4'	120'
4,464'	4,488'	24'		
4,523'	4,584'	61'		
4,604'	4,695'	91'		

Proposed
Current
Abandoned
Abandoned

Last Update: 10/18/2016