

District I
1625 N. French Dr., Hobbs, NM 88240
Phone: (575) 393-6161 Fax: (575) 393-0720
District II
811 S. First St., Artesia, NM 88210
Phone: (575) 748-1283 Fax: (575) 748-9720
District III
1000 Rio Brazos Road, Aztec, NM 87410
Phone: (505) 334-6178 Fax: (505) 334-6170
District IV
1220 S. St. Francis Dr., Santa Fe, NM 87505
Phone: (505) 476-3460 Fax: (505) 476-3462

State of New Mexico
Energy, Minerals & Natural Resources
Department
OIL CONSERVATION DIVISION
1220 South St. Francis Dr.
Santa Fe, NM 87505

FORM C-102
Revised August 1, 2011
Submit one copy to appropriate
District Office

☒ AMENDED REPORT

WELL LOCATION AND ACREAGE DEDICATION PLAT

As Drilled

¹ API Number 30-025-40926		² Pool Code 97900	³ Pool Name Red Hills; Upper Bone Spring Shale
⁴ Property Code 39643	⁵ Property Name DRAGON 36 STATE		⁶ Well Number #4H
⁷ OGRID No. 7377	⁸ Operator Name EOG RESOURCES, INC.		⁹ Elevation 3479'

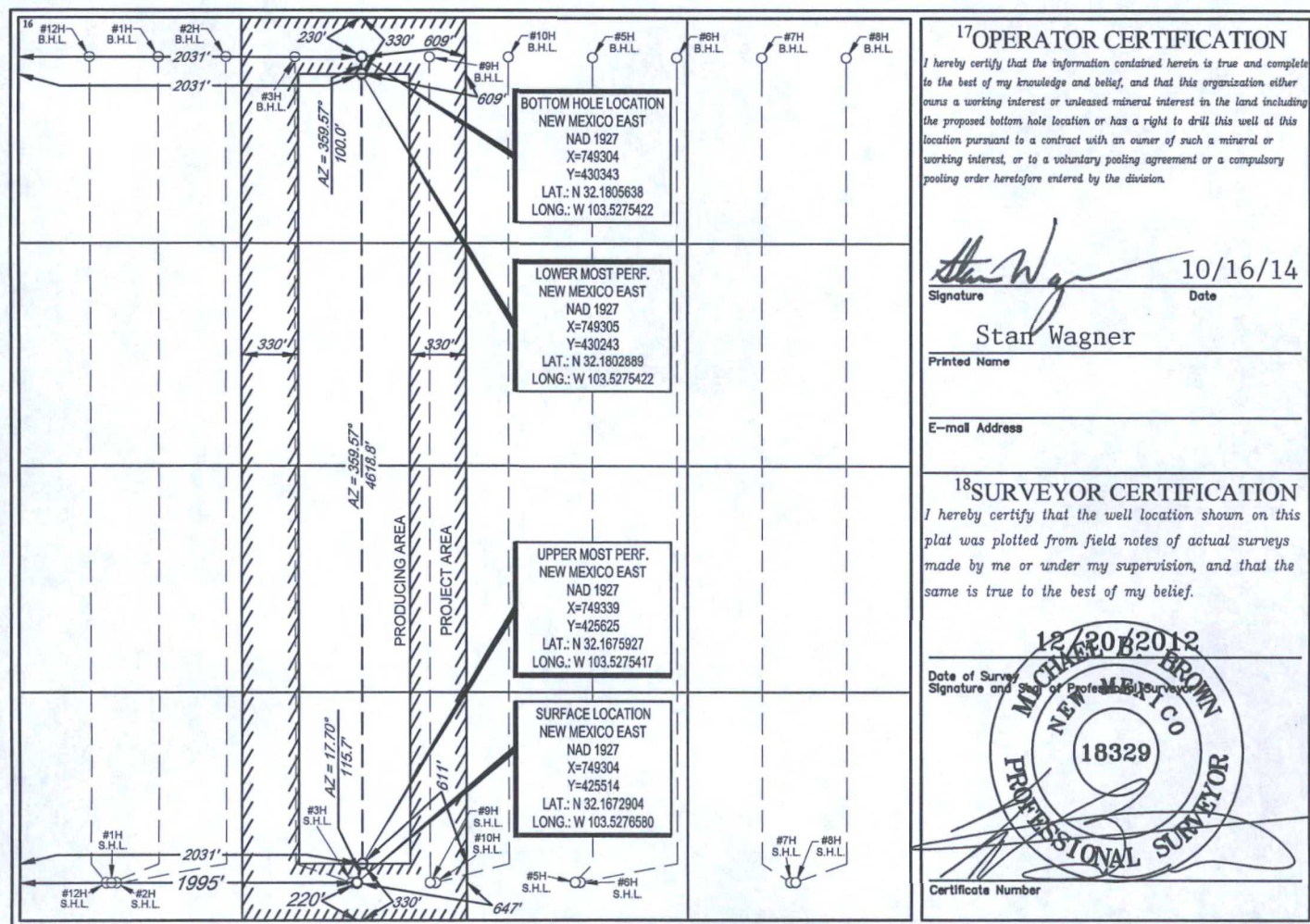
¹⁰Surface Location

UL or lot no.	Section	Township	Range	Lot Idn	Feet from the	North/South line	Feet from the	East/West line	County
N	36	24-S	33-E	-	220'	SOUTH	1995'	WEST	LEA

UL or lot no.	Section	Township	Range	Lot Idn	Feet from the	North/South line	Feet from the	East/West line	County
C	36	24-S	33-E	-	209	NORTH	2033	WEST	LEA

¹² Dedicated Acres 160.00	¹³ Joint or Infill	¹⁴ Consolidation Code	¹⁵ Order No.
---	-------------------------------	----------------------------------	-------------------------

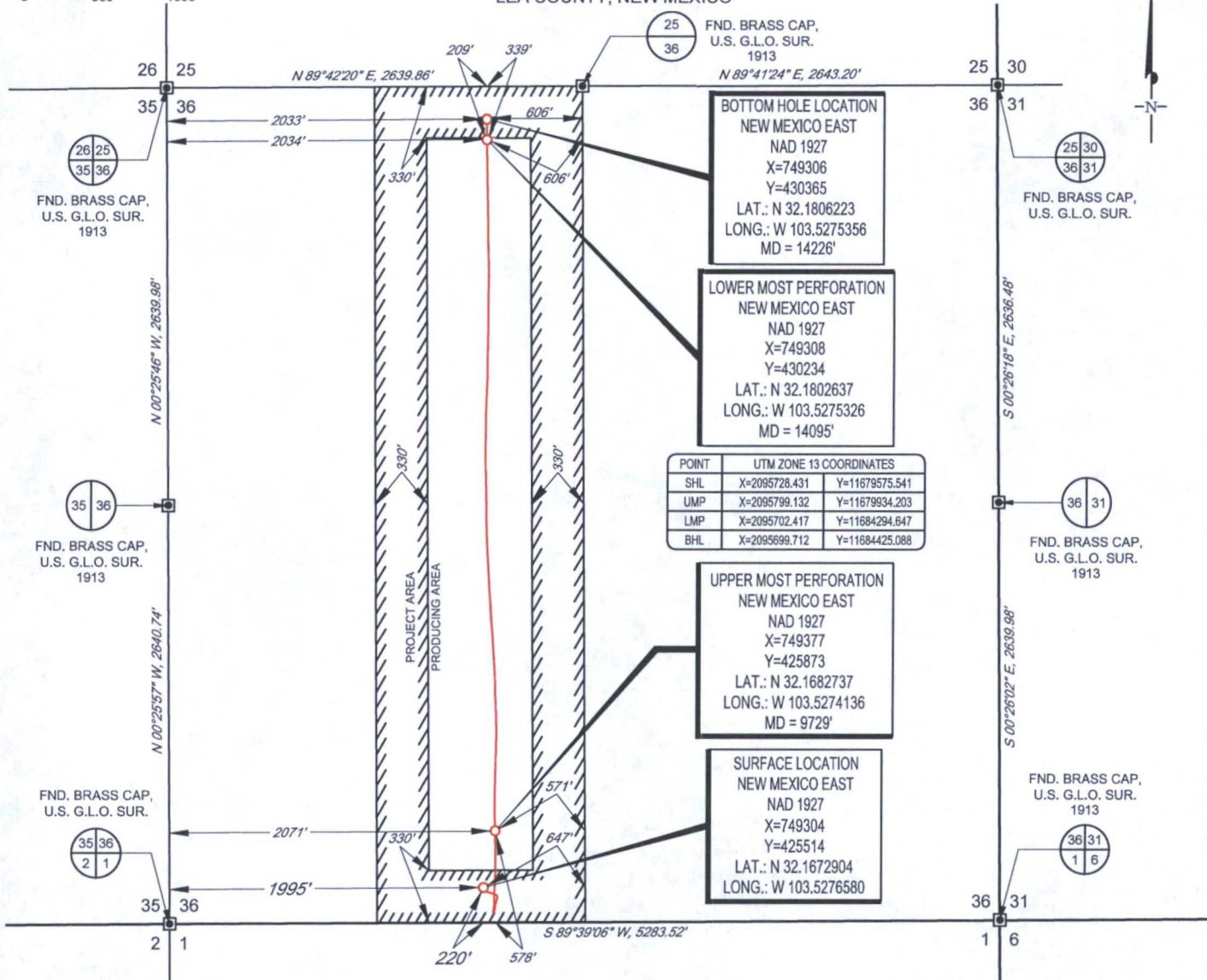
No allowable will be assigned to this completion until all interests have been consolidated or a non-standard unit has been approved by the division.



SCALE: 1" = 1000'

0' 500' 1000'

SECTION 36, TOWNSHIP 24-S, RANGE 33-E, N.M.P.M.
LEA COUNTY, NEW MEXICO

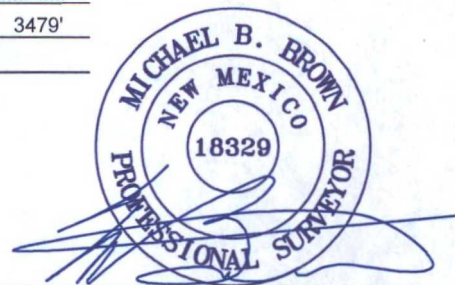


POINT	UTM ZONE 13 COORDINATES	
SHL	X=2095728.431	Y=11679575.541
UMP	X=2095799.132	Y=11679934.203
LMP	X=2095702.417	Y=11684294.647
BHL	X=2095699.712	Y=11684425.088

LEASE NAME & WELL NO.: DRAGON 36 STATE #4H
 SECTION 36 TWP 24-S RGE 33-E SURVEY N.M.P.M.
 COUNTY LEA STATE NM ELEVATION 3479'
 DESCRIPTION 220' FSL & 1995' FWL



1400 EVERMAN PARKWAY, Ste. 197 • FT. WORTH, TEXAS 76140
 TELEPHONE: (817) 744-7512 • FAX (817) 744-7548
 2903 NORTH BIG SPRING • MIDLAND, TEXAS 79705
 TELEPHONE: (432) 682-1653 OR (800) 767-1653 • FAX (432) 682-1743
 WWW.TOPOGRAPHIC.COM



Michael Blake Brown, P.S. No. 18329
 SEPTEMBER 21, 2016



DRAGON 36 STATE #4H
 AS-COMPLETED

DATE: 09/21/16
 FILE: AD_DRAGON36STATE_4H
 DRAWN BY: A.C.C.
 SHEET: 1 OF 1

REVISION:

NOTES:

1. ORIGINAL DOCUMENT SIZE: 8.5" X 11"
2. ALL BEARINGS, DISTANCES, AND COORDINATE VALUES CONTAINED HEREIN ARE GRID BASED UPON THE NEW MEXICO STATE PLANE COORDINATE SYSTEM, EAST ZONE, U.S. SURVEY FEET, NORTH AMERICAN DATUM 19 27.
3. THIS WELL LOCATION SHOWN HEREON HAS BEEN SURVEYED ON THE GROUND UNDER MY SUPERVISION AND PREPARED ACCORDING TO THE EVIDENCE FOUND AT THE TIME OF SURVEY, AND DATA PROVIDED BY EOG RESOURCES, INC. THIS CERTIFICATION IS MADE AND LIMITED TO THOSE PERSONS OR ENTITIES SHOWN ON THE FACE OF THIS PLAT AND IS NON-TRANSFERABLE. THIS SURVEY IS CERTIFIED FOR THIS TRANSACTION ONLY.