

HOBBS OCD

As-Drilled Plat

State of New Mexico

Form C-102

District I
1625 N. French Dr., Hobbs, NM 88240
Phone: (575) 393-6161 Fax: (575) 393-0720
District II
511 S. First St., Artesia, NM 88210
Phone: (575) 748-1283 Fax: (575) 748-9720
District III
1000 Rio Brazos Road, Aztec, NM 87410
Phone: (505) 334-6178 Fax: (505) 334-6170
District IV
1220 S. St. Francis Dr., Santa Fe, NM 87505
Phone: (505) 476-3460 Fax: (505) 476-3462

NOV 22 2016

RECEIVED

Energy, Minerals & Natural Resources Department

OIL CONSERVATION DIVISION

1220 South St. Francis Dr.

Santa Fe, NM 87505

Revised August 1, 2011

Submit one copy to appropriate

District Office

AMENDED REPORT

WELL LOCATION AND ACREAGE DEDICATION PLAT

Table with 3 columns: API Number (30-025-42769), Pool Code (96556), Pool Name (Cotton Draw; Bone Spring, East), Property Code (314752), Property Name (REBEL 20 FED), Well Number (5H), OGRID No. (6137), Operator Name (DEVON ENERGY PRODUCTION COMPANY, L.P.), Elevation (3571.4)

Surface Location

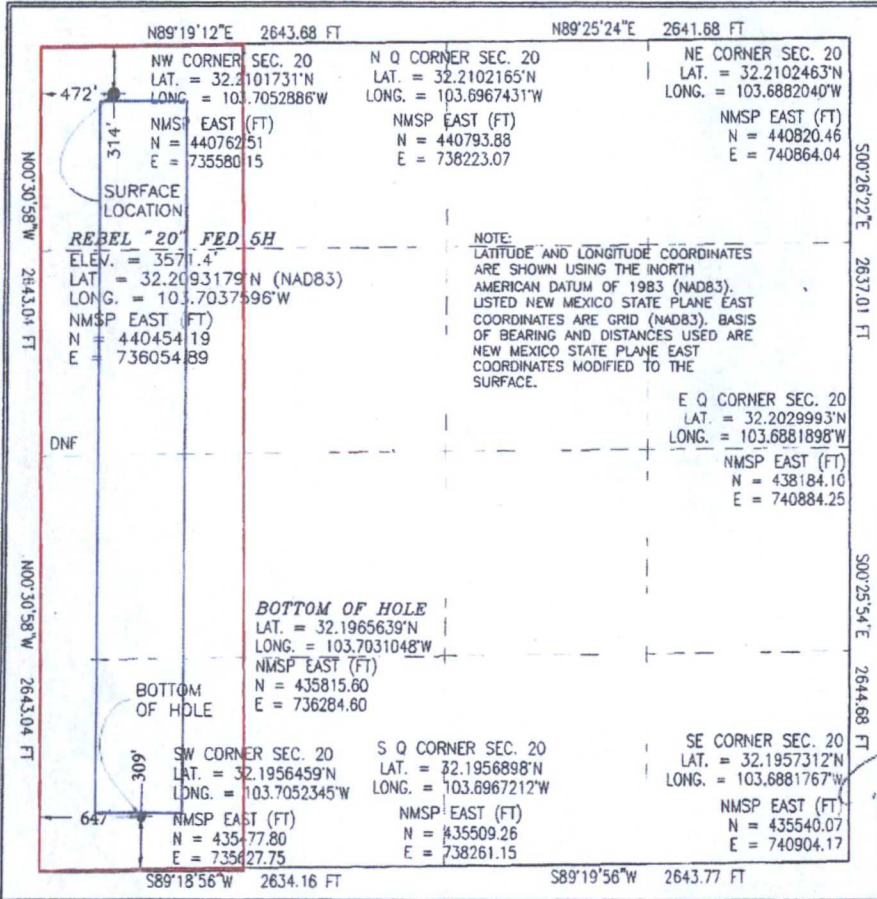
Table with 10 columns: UL or lot no. (D), Section (20), Township (24 S), Range (32 E), Lot Idn, Feet from the (314), North/South line (NORTH), Feet from the (472), East/West line (WEST), County (LEA)

Bottom Hole Location If Different From Surface

Table with 10 columns: UL or lot no. (M), Section (20), Township (24 S), Range (32 E), Lot Idn, Feet from the (309), North/South line (SOUTH), Feet from the (647), East/West line (WEST), County (LEA)

Table with 4 columns: Dedicated Acres (160), Joint or Infill, Consolidation Code, Order No.

No allowable will be assigned to this completion until all interests have been consolidated or a non-standard unit has been approved by the division.



OPERATOR CERTIFICATION form with signature of Linda Good, dated 9/14/2016, and printed name and email address.

SURVEYOR CERTIFICATION form with signature of Filimon F. Jaramillo, dated JANUARY 27, 2015, and certificate number.

PP: 95' FNL & 620' FWL, Sec. 20-T24S-R32E

Project Area: [Red Box]
Producing Area: [Blue Box]