

HOBBS OCD

NOV 29 2016

FIELD LAND APPROVED 10/25/2016

District I
1625 N. French Dr., Hobbs, NM 88240
Phone: (505) 393-6161 Fax: (505) 393-0720

District II
811 S. First St., Artesia, NM 88210
Phone: (505) 748-1283 Fax: (505) 748-9720

District III
1000 Rio Brazos Road, Aztec, NM 87410
Phone: (505) 334-6178 Fax: (505) 334-6170

District IV
1220 S. St. Francis Dr., Santa Fe, NM 87505
Phone: (505) 476-3460 Fax: (505) 476-3462

State of New Mexico
Energy, Minerals & Natural Resources Department
OIL CONSERVATION DIVISION
1220 South St. Francis Dr.
Santa Fe, NM 87505

Form C-102
Revised August 1, 2011
Submit one copy to appropriate
District Office

☐ AMENDED REPORT

WELL LOCATION AND ACREAGE DEDICATION PLAT

¹ API Number		² Pool Code 98210		³ Pool Name Stratigraphic					
⁴ Property Code 30884		⁵ Property Name BIG CAT 16 STATE VDW						⁶ Well Number 1	
⁷ OGRID No. 6137		⁸ Operator Name DEVON ENERGY PRODUCTION COMPANY, L.P.						⁹ Elevation 3683.9	
¹⁰ Surface Location									
UL or lot no. L	Section 16	Township 23 S	Range 32 E	Lot Idn	Feet from the 2110	North/South line SOUTH	Feet from the 200	East/West line WEST	County LEA
¹¹ Bottom Hole Location If Different From Surface									
UL or lot no.	Section	Township	Range	Lot Idn	Feet from the	North/South line	Feet from the	East/West line	County
¹² Dedicated Acres 40									
¹³ Joint or Infill		¹⁴ Consolidation Code			¹⁵ Order No.				

No allowable will be assigned to this completion until all interests have been consolidated or a non-standard unit has been approved by the division.

N89°25'27"E 2643.69 FT N89°25'35"E 2640.19 FT 17 OPERATOR CERTIFICATION

I hereby certify that the information contained herein is true and complete to the best of my knowledge and belief, and that this organization either owns a working interest or unleased mineral interest in the land including the proposed bottom hole location or has a right to drill this well at this location pursuant to a contract with an owner of such a mineral or working interest, or to a voluntary pooling agreement or a compulsory pooling order heretofore entered by the division.

Signature Chance Bland Date 11/07/2016

Chance Bland

Printed Name

chance.bland@dv.com

E-mail Address

18 SURVEYOR CERTIFICATION

I hereby certify that the well location shown on this plat was plotted from field notes of actual surveys made by me or under my supervision, and that the same is true and correct to the best of my belief.

OCTOBER 13, 2016

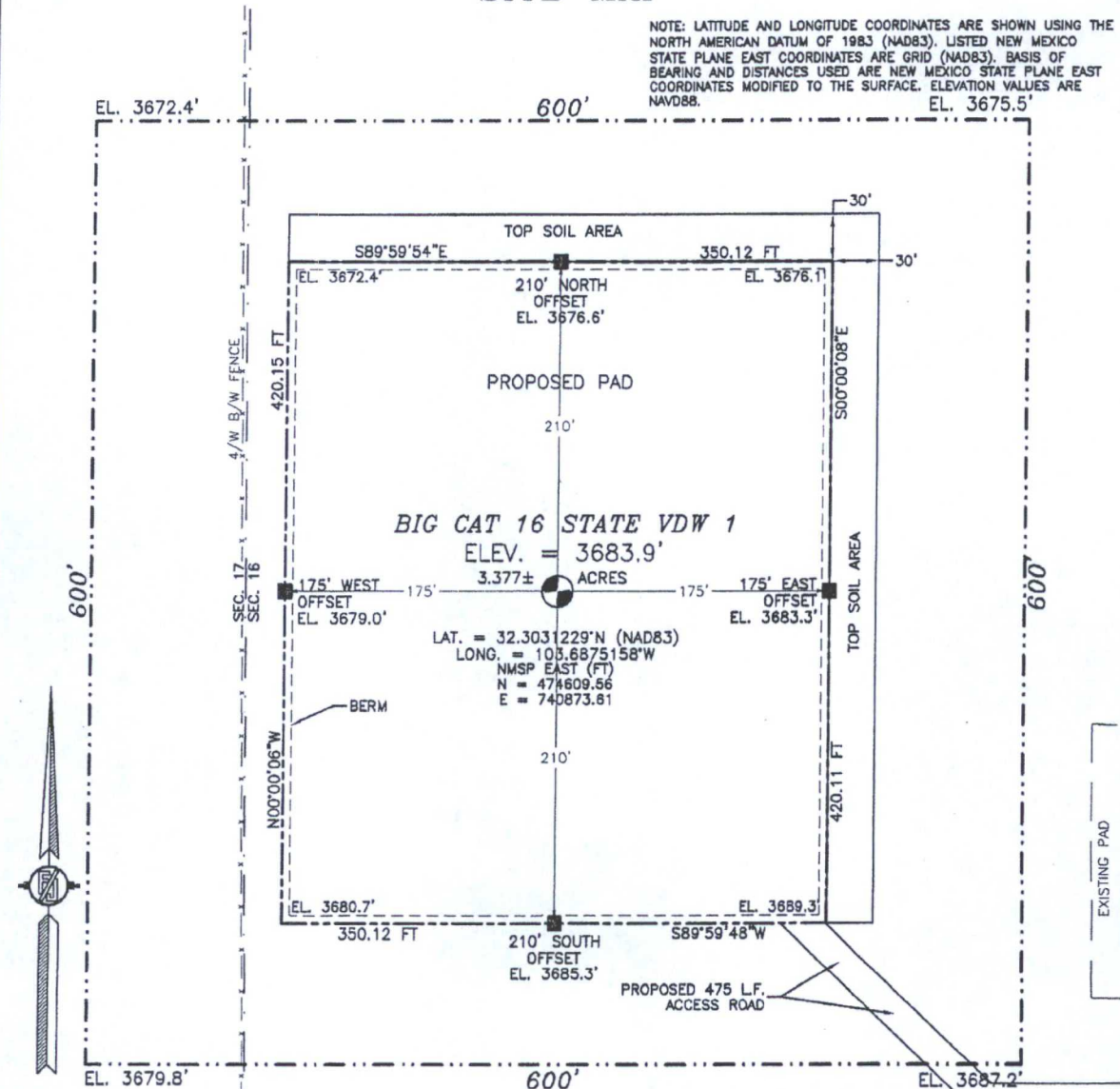
Date of Survey

Signature and Seal of Professional Surveyor
Certificate Number 12797 FIDELITY & BARNETT L.L.C. PLS 12797

SURVEY NO. 4963

SECTION 16, TOWNSHIP 23 SOUTH, RANGE 32 EAST, N.M.P.M.
LEA COUNTY, STATE OF NEW MEXICO
SITE MAP

NOTE: LATITUDE AND LONGITUDE COORDINATES ARE SHOWN USING THE NORTH AMERICAN DATUM OF 1983 (NAD83). LISTED NEW MEXICO STATE PLANE EAST COORDINATES ARE GRID (NAD83). BASIS OF BEARING AND DISTANCES USED ARE NEW MEXICO STATE PLANE EAST COORDINATES MODIFIED TO THE SURFACE. ELEVATION VALUES ARE NAVD88.



010 50 100 200

SCALE 1" = 100'

DIRECTIONS TO LOCATION

FROM THE INTERSECTION OF STATE HWY 128 AND RED ROAD (CO. RD. 798) GO NORTH ON RED ROAD APPROX. 3.5 MILES TO A LEASE ROAD ON RIGHT (EAST), TURN EAST GO APPROX. 2.1 MILES, ROAD TURNS RIGHT (SOUTH) GO SOUTH APPROX. 0.5 MILE, ROAD TURNS LEFT (EAST) GO EAST APPROX. 1.1 MILES TO A LEASE ROAD ON LEFT (NORTH), TURN NORTH GO APPROX. 0.25 MILE TO A PROPOSED ROAD ABOUT 80' SOUTH OF EXISTING PAD, FOLLOW STAKES WEST ABOUT 475' TO THE SOUTHEAST CORNER OF PROPOSED PAD.

DEVON ENERGY PRODUCTION COMPANY, L.P.
BIG CAT 16 STATE VDW 1

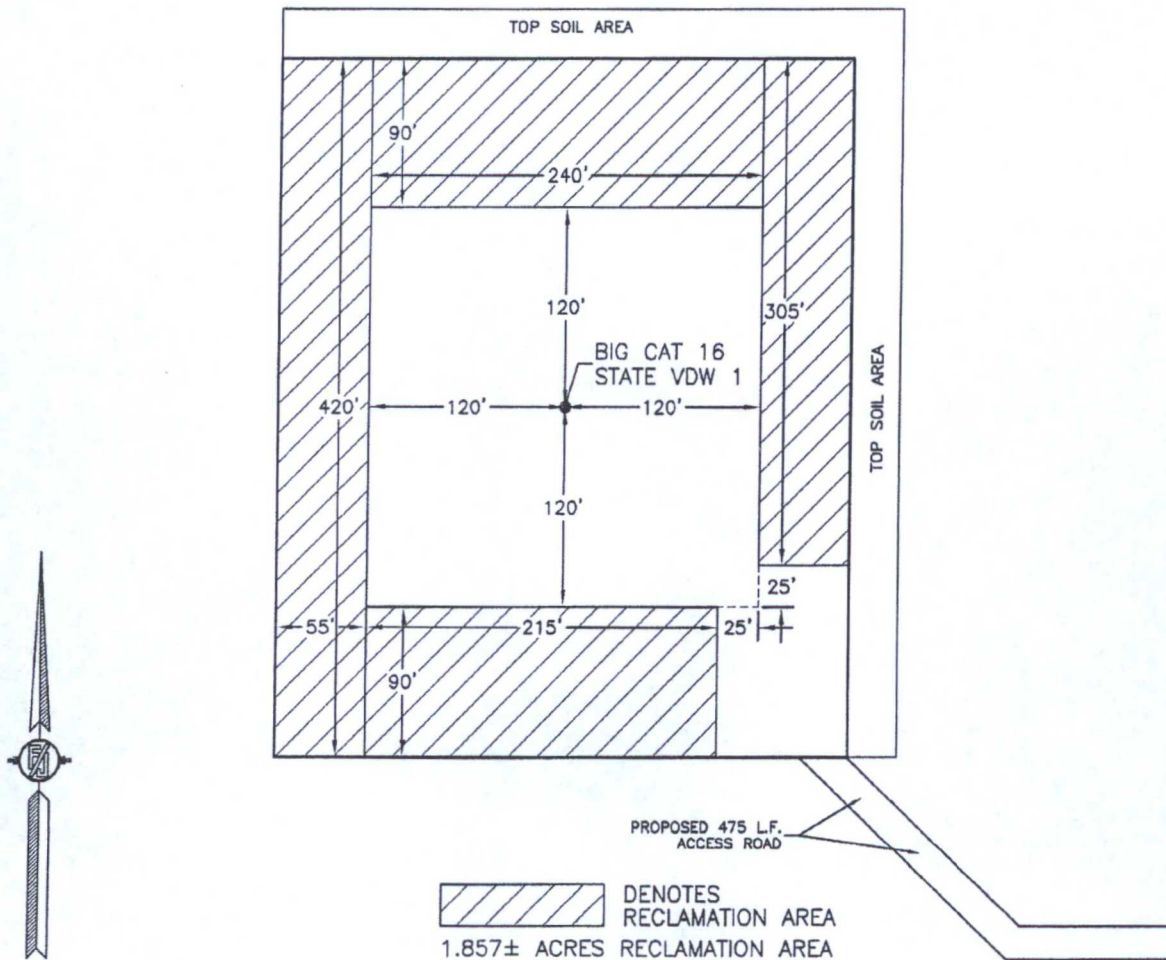
LOCATED 2110 FT. FROM THE SOUTH LINE
AND 200 FT. FROM THE WEST LINE OF
SECTION 16, TOWNSHIP 23 SOUTH,
RANGE 32 EAST, N.M.P.M.
LEA COUNTY, STATE OF NEW MEXICO

OCTOBER 13, 2016

SURVEY NO. 4963

MADRON SURVEYING, INC. 301 SOUTH CANAL (575) 234-3341 CARLSBAD, NEW MEXICO

SECTION 16, TOWNSHIP 23 SOUTH, RANGE 32 EAST, N.M.P.M.
LEA COUNTY, STATE OF NEW MEXICO
INTERIM SITE RECLAMATION



0 10 50 100 200
SCALE 1" = 100'

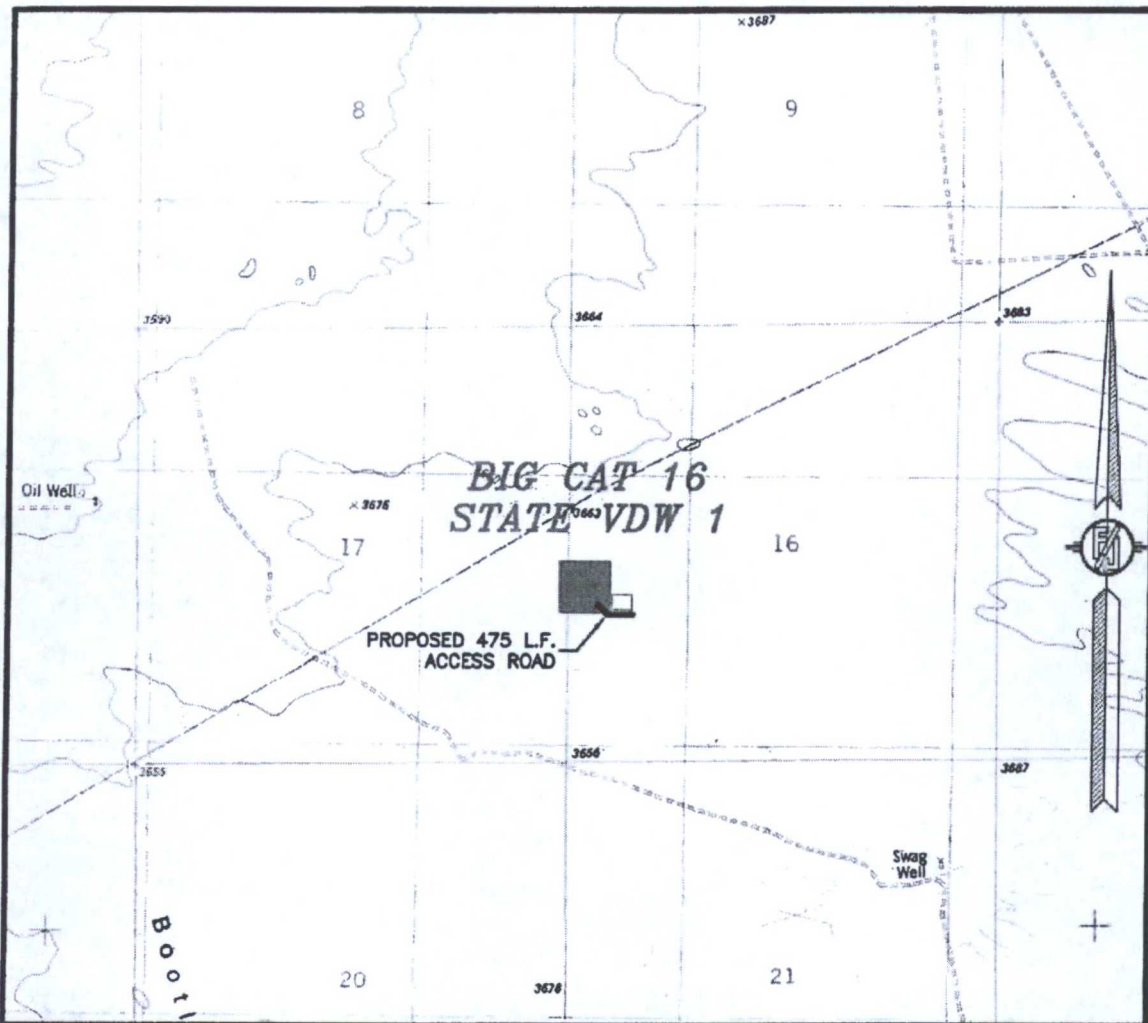
DEVON ENERGY PRODUCTION COMPANY, L.P.
BIG CAT 16 STATE VDW 1
LOCATED 2110 FT. FROM THE SOUTH LINE
AND 200 FT. FROM THE WEST LINE OF
SECTION 16, TOWNSHIP 23 SOUTH,
RANGE 32 EAST, N.M.P.M.
LEA COUNTY, STATE OF NEW MEXICO

OCTOBER 13, 2016

SURVEY NO. 4963

MADRON SURVEYING, INC. 301 SOUTH CANAL (575) 234-3341 CARLSBAD, NEW MEXICO

SECTION 16, TOWNSHIP 23 SOUTH, RANGE 32 EAST, N.M.P.M.
LEA COUNTY, STATE OF NEW MEXICO
LOCATION VERIFICATION MAP



USGS QUAD MAP:
BOOTLEG RIDGE

NOT TO SCALE

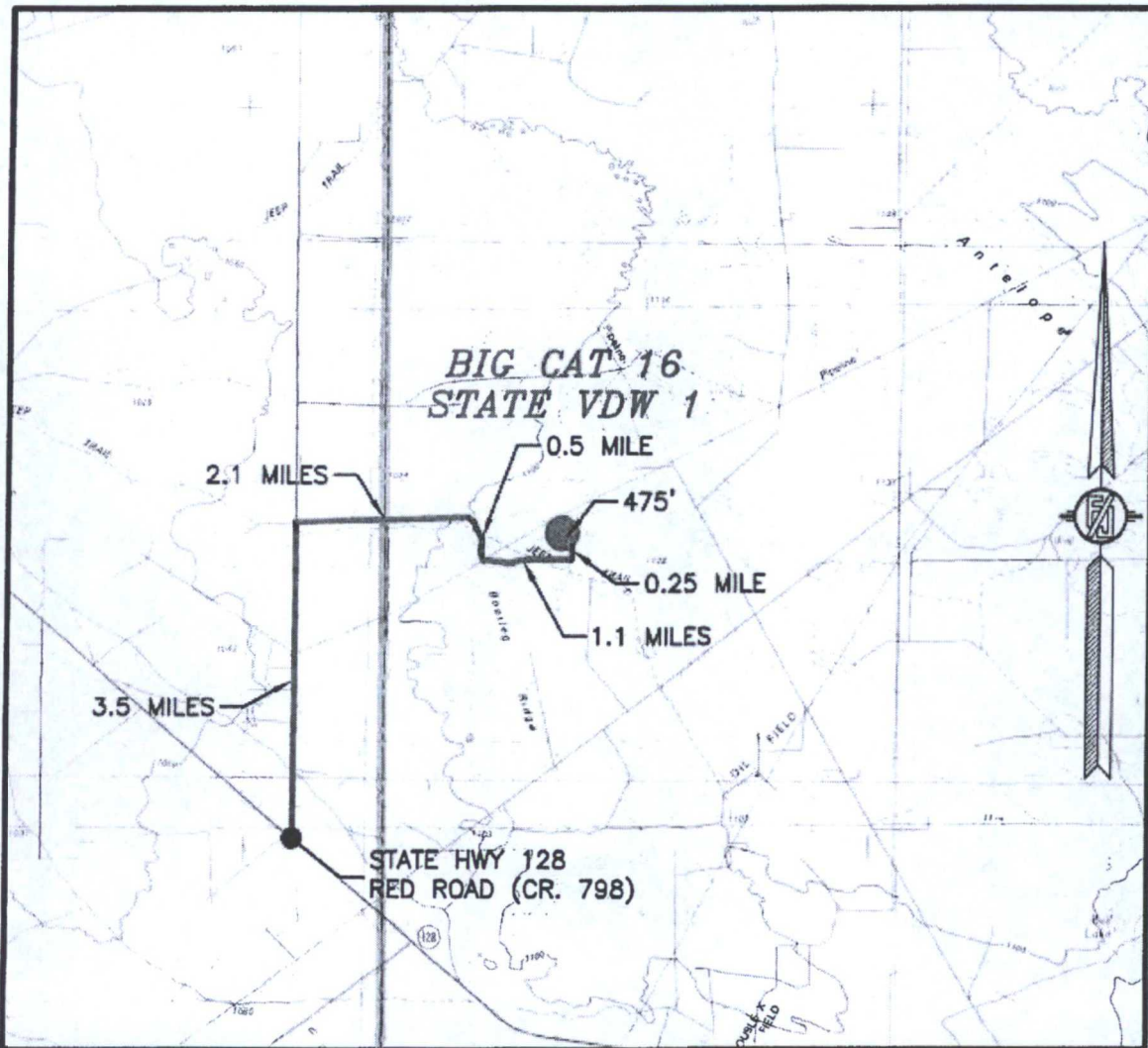
DEVON ENERGY PRODUCTION COMPANY, L.P.
BIG CAT 16 STATE VDW 1
LOCATED 2110 FT. FROM THE SOUTH LINE
AND 200 FT. FROM THE WEST LINE OF
SECTION 16, TOWNSHIP 23 SOUTH,
RANGE 32 EAST, N.M.P.M.
LEA COUNTY, STATE OF NEW MEXICO

OCTOBER 13, 2016

SURVEY NO. 4963

MADRON SURVEYING, INC. 301 SOUTH CANAL (575) 234-3341 CARLSBAD, NEW MEXICO

SECTION 16, TOWNSHIP 23 SOUTH, RANGE 32 EAST, N.M.P.M.
LEA COUNTY, STATE OF NEW MEXICO
VICINITY MAP



DISTANCES IN MILES

NOT TO SCALE

DIRECTIONS TO LOCATION

FROM THE INTERSECTION OF STATE HWY 128 AND RED ROAD (CO. RD. 798) GO NORTH ON RED ROAD APPROX. 3.5 MILES TO A LEASE ROAD ON RIGHT (EAST), TURN EAST GO APPROX. 2.1 MILES, ROAD TURNS RIGHT (SOUTH) GO SOUTH APPROX. 0.5 MILE, ROAD TURNS LEFT (EAST) GO EAST APPROX. 1.1 MILES TO A LEASE ROAD ON LEFT (NORTH), TURN NORTH GO APPROX. 0.25 MILE TO A PROPOSED ROAD ABOUT 60' SOUTH OF EXISTING PAD, FOLLOW STAKES WEST ABOUT 475' TO THE SOUTHEAST CORNER OF PROPOSED PAD.

DEVON ENERGY PRODUCTION COMPANY, L.P.
BIG CAT 16 STATE VDW 1

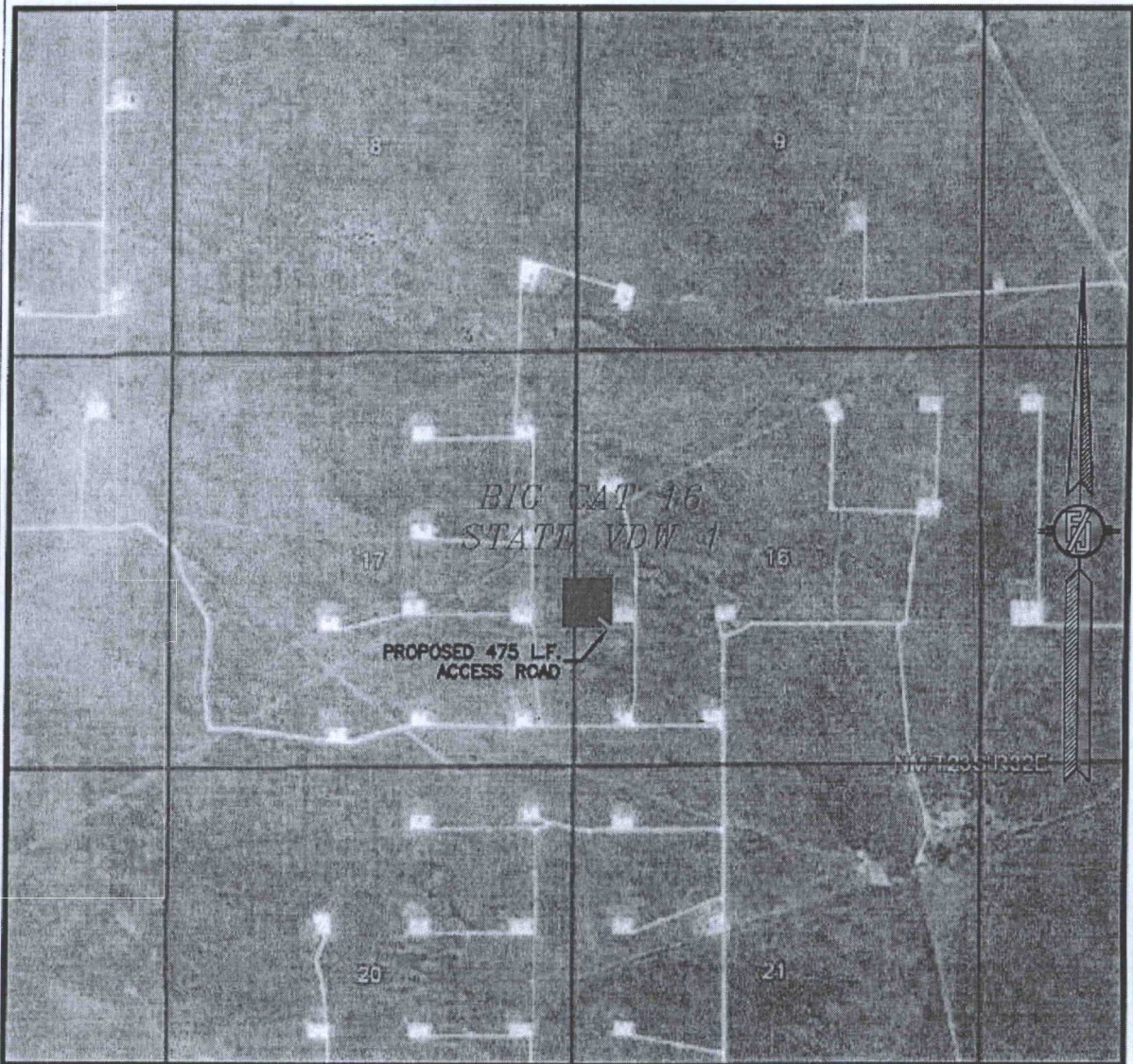
LOCATED 2110 FT. FROM THE SOUTH LINE
AND 200 FT. FROM THE WEST LINE OF
SECTION 16, TOWNSHIP 23 SOUTH,
RANGE 32 EAST, N.M.P.M.
LEA COUNTY, STATE OF NEW MEXICO

OCTOBER 13, 2016

SURVEY NO. 4963

MADRON SURVEYING, INC. 301 SOUTH CAVAL (575) 234-3341 CARLSBAD, NEW MEXICO

SECTION 16, TOWNSHIP 23 SOUTH, RANGE 32 EAST, N.M.P.M.
LEA COUNTY, STATE OF NEW MEXICO
AERIAL PHOTO



NOT TO SCALE
AERIAL PHOTO:
GOOGLE EARTH
FEB. 2014

DEVON ENERGY PRODUCTION COMPANY, L.P.
BIG CAT 16 STATE VDW 1

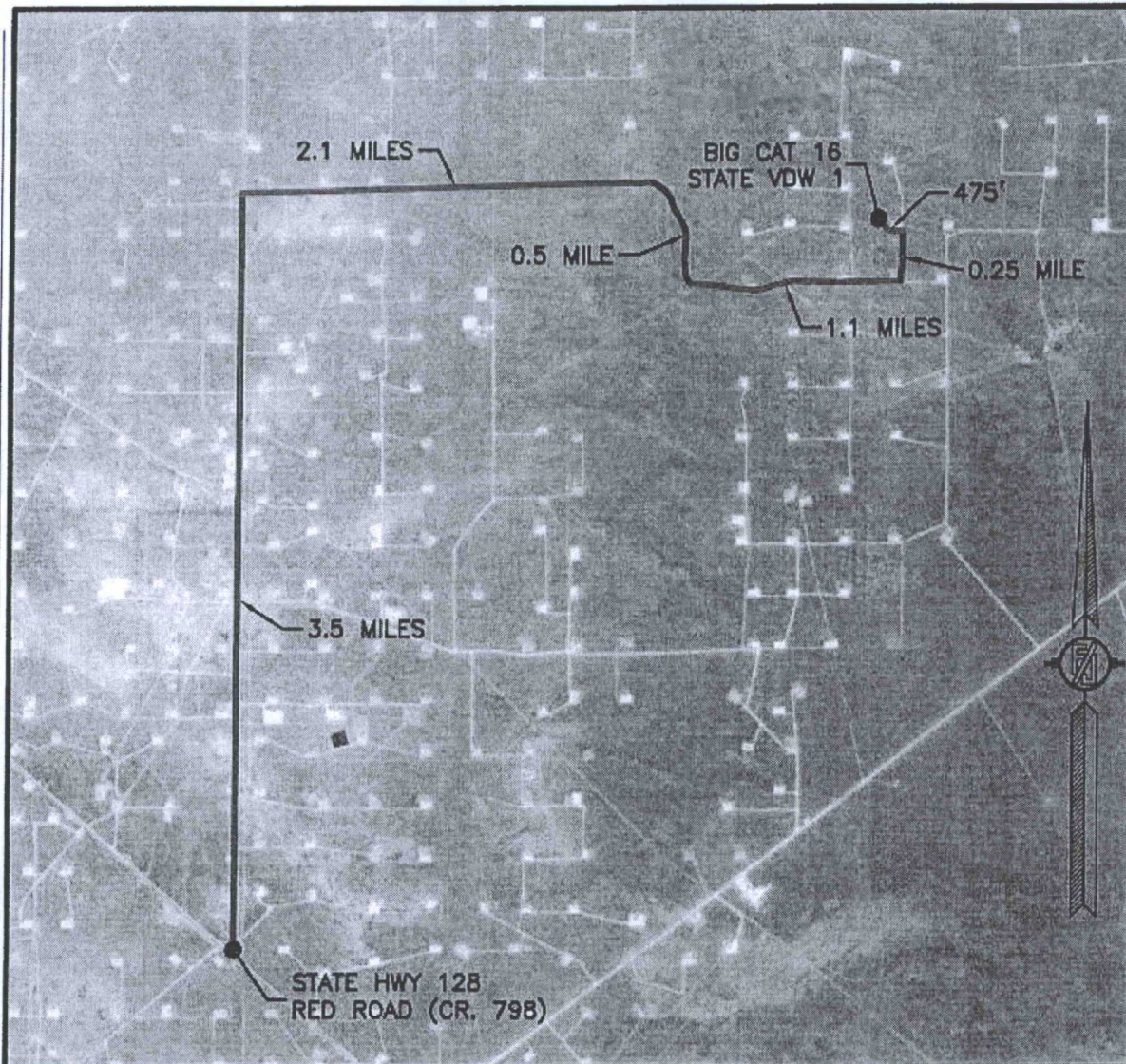
LOCATED 2110 FT. FROM THE SOUTH LINE
AND 200 FT. FROM THE WEST LINE OF
SECTION 16, TOWNSHIP 23 SOUTH,
RANGE 32 EAST, N.M.P.M.
LEA COUNTY, STATE OF NEW MEXICO

OCTOBER 13, 2016

SURVEY NO. 4963

MADRON SURVEYING, INC. 301 SOUTH CANAL (575) 234-3341 CARLSBAD, NEW MEXICO

SECTION 16, TOWNSHIP 23 SOUTH, RANGE 32 EAST, N.M.P.M.
LEA COUNTY, STATE OF NEW MEXICO
AERIAL ACCESS ROUTE MAP



NOT TO SCALE
AERIAL PHOTO:
GOOGLE EARTH
FEB. 2014

DEVON ENERGY PRODUCTION COMPANY, L.P.
BIG CAT 16 STATE VDW 1

LOCATED 2110 FT. FROM THE SOUTH LINE
AND 200 FT. FROM THE WEST LINE OF
SECTION 16, TOWNSHIP 23 SOUTH,
RANGE 32 EAST, N.M.P.M.
LEA COUNTY, STATE OF NEW MEXICO

OCTOBER 13, 2016

SURVEY NO. 4963

MADRON SURVEYING, INC. 301 SOUTH CANAL (575) 234-3341 **CARLSBAD, NEW MEXICO**