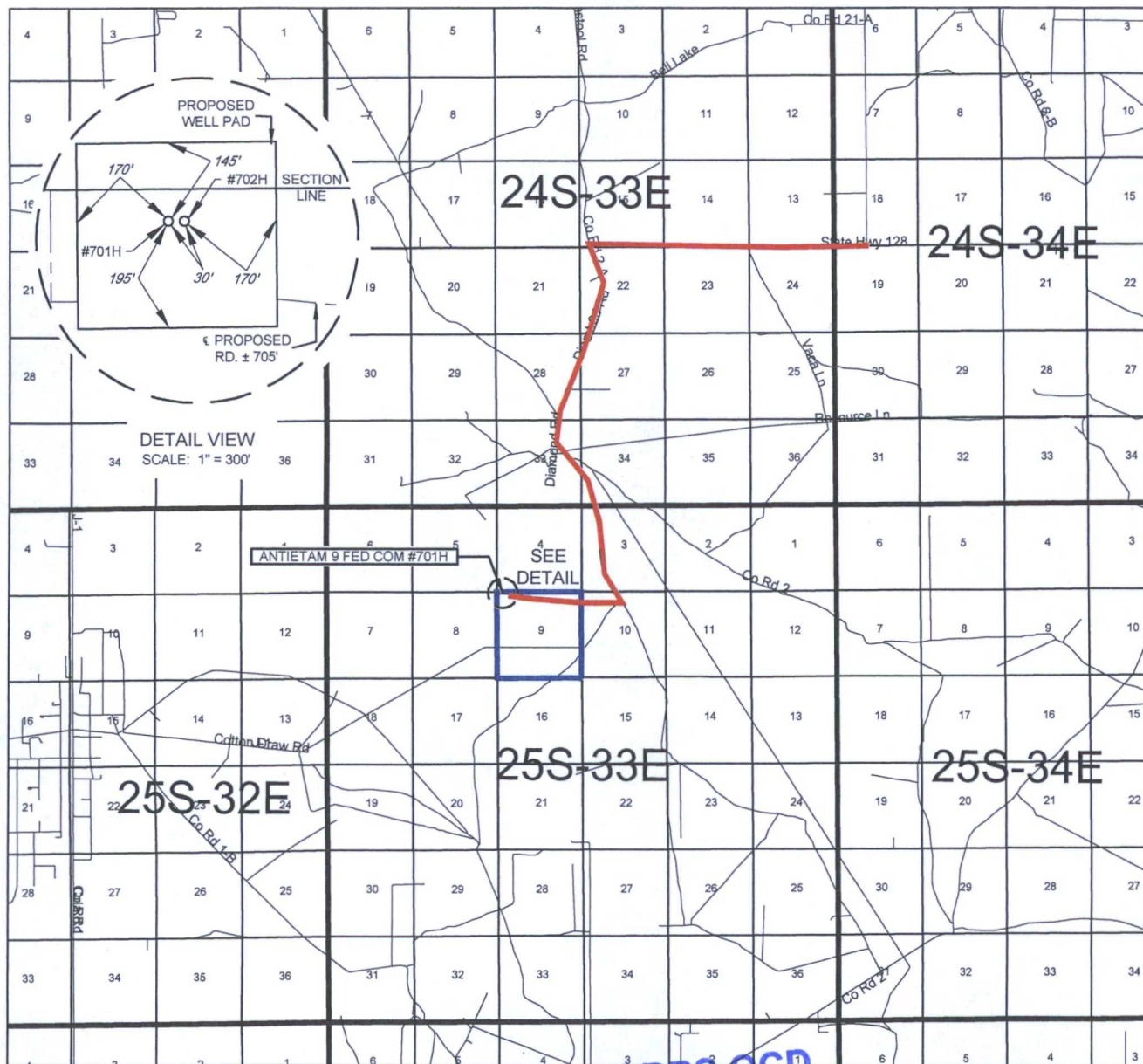


EXHIBIT 2 VICINITY MAP



NOV 28 2016

RECEIVED

LEASE NAME & WELL NO.: ANTIETAM 9 FED COM #701H

SECTION 9 TWP 25-S RGE 33-E SURVEY N.M.P.M.
COUNTY LEA STATE NM
DESCRIPTION 59' FNL & 348' FWL

DISTANCE & DIRECTION

FROM INT. OF NM-128 W & DELAWARE BASIN RD., GO WEST ON NM-128 W
±3.3 MILES, THENCE SOUTH (LEFT) ON DIAMOND RD. ±2.5 MILES, THENCE
SOUTHEAST (LEFT) ON C.R. 2 ±0.2 MILES, THENCE SOUTHEAST (RIGHT) AT
VACA LN. ±1 MILE, THENCE WEST (RIGHT) ON LEASE RD. ±1.2 MILES TO A
POINT 200 FEET SOUTHEAST OF THE LOCATION.

THIS EASEMENT/SERVITUDE LOCATION SHOWN HEREON HAS BEEN SURVEYED ON THE GROUND UNDER MY
SUPERVISION AND PREPARED ACCORDING TO THE EVIDENCE FOUND AT THE TIME OF SURVEY, AND DATA
PROVIDED BY EOG RESOURCES, INC. THIS CERTIFICATION IS MADE AND LIMITED TO THOSE PERSONS OR
ENTITIES SHOWN ON THE FACE OF THIS PLAT AND IS NON-TRANSFERABLE. THIS SURVEY IS CERTIFIED FOR THIS
TRANSACTION ONLY.

ALL BEARINGS, DISTANCES, AND COORDINATE VALUES CONTAINED HEREON ARE GRID BASED UPON THE NEW
MEXICO STATE PLANE COORDINATE SYSTEM, EAST ZONE OF THE NORTH AMERICAN DATUM 1927, U.S. SURVEY
FEET.

SCALE: 1" = 10000'
0' 5000' 10000'



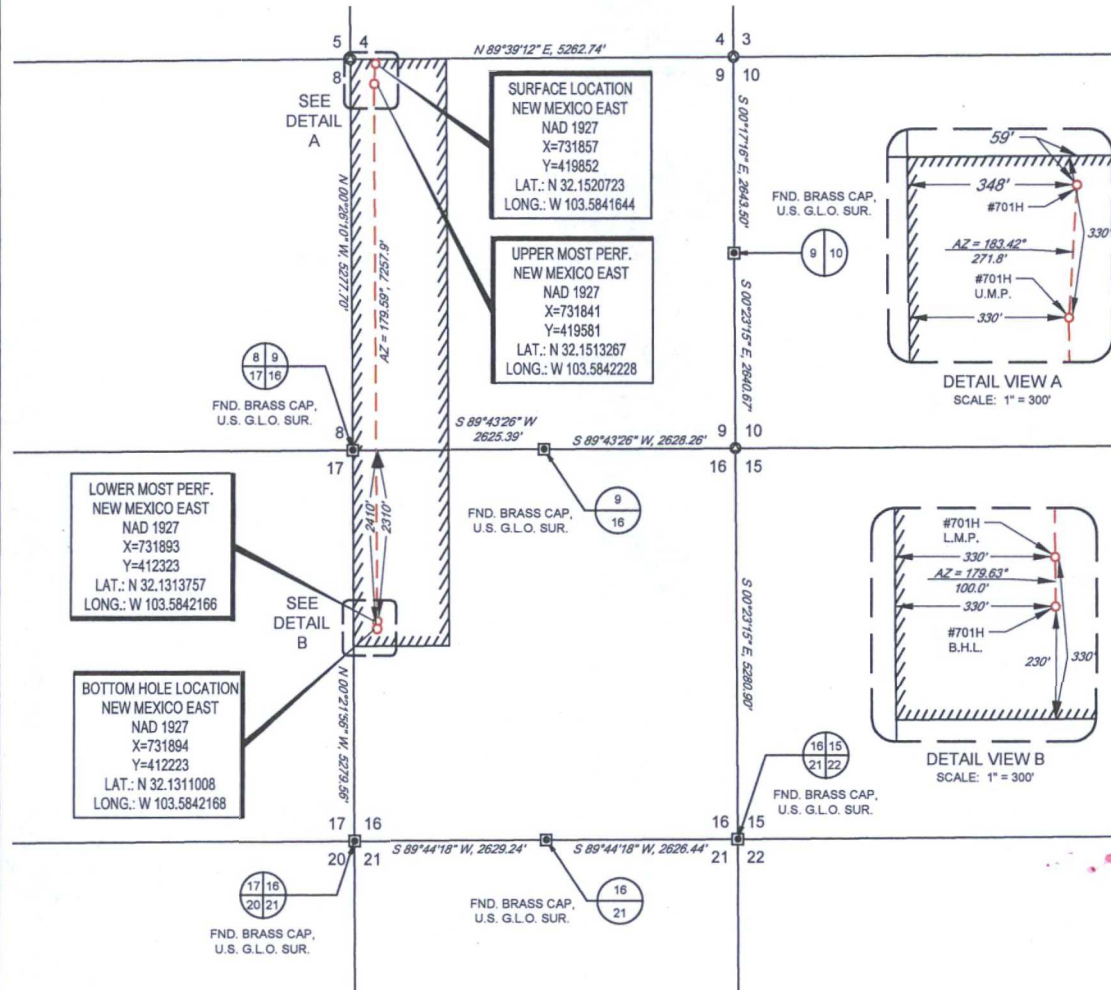
TOPOGRAPHIC
LOYALTY INNOVATION LEGACY

1400 EVERMAN PARKWAY, Ste. 197 • FT. WORTH, TEXAS 76140
TELEPHONE: (817) 744-7512 • FAX (817) 744-7548
2903 NORTH BIG SPRING • MIDLAND, TEXAS 79705
TELEPHONE: (432) 682-1653 OR (800) 767-1653 • FAX (432) 682-1743
WWW.TOPOGRAPHIC.COM



EXHIBIT 2A

SECTION 9, TOWNSHIP 25-S, RANGE 33-E, N.M.P.M.
LEA COUNTY, NEW MEXICO



LEASE NAME & WELL NO.: ANTIETAM 9 FED COM #701H

SECTION 9 TWP 25-S RGE 33-E SURVEY N.M.P.M.
COUNTY LEA STATE NM
DESCRIPTION 59' FNL & 348' FWL

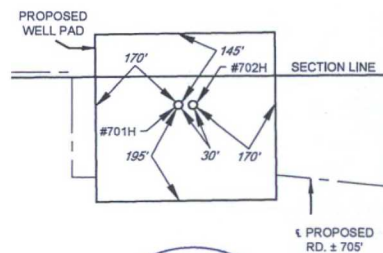
DISTANCE & DIRECTION

FROM INT. OF NM-128 W & DELAWARE BASIN RD. GO WEST ON NM-128 W
±3.3 MILES, THENCE SOUTH (LEFT) ON DIAMOND RD. ±2.5 MILES, THENCE
SOUTHEAST (LEFT) ON C.R. ±0.2 MILES, THENCE SOUTHEAST (RIGHT)
AT VACA LN. ±1 MILE, THENCE WEST (RIGHT) ON LEASE RD. ±1.2 MILES TO
A POINT 200 FEET SOUTHEAST OF THE LOCATION.

ALL BEARINGS, DISTANCES, AND COORDINATE VALUES CONTAINED HEREON ARE GRID
BASED UPON THE NEW MEXICO STATE PLANE COORDINATE SYSTEM, EAST ZONE OF THE
NORTH AMERICAN DATUM 1927, U.S. SURVEY FEET.

THIS EASEMENT/SERVITUDE LOCATION SHOWN HEREON HAS BEEN SURVEYED ON THE GROUND
UNDER MY SUPERVISION AND PREPARED ACCORDING TO THE EVIDENCE FOUND AT THE TIME OF
SURVEY, AND DATA PROVIDED BY EOG RESOURCES, INC. THIS CERTIFICATION IS MADE AND LIMITED
TO THOSE PERSONS OR ENTITIES SHOWN ON THE FACE OF THIS PLAT AND IS NON-TRANSFERABLE.
THIS SURVEY IS CERTIFIED FOR THIS TRANSACTION ONLY.

DETAIL VIEW
SCALE: 1" = 300'



Michael Blake Brown, P.S. No. 18329
JULY 19, 2016

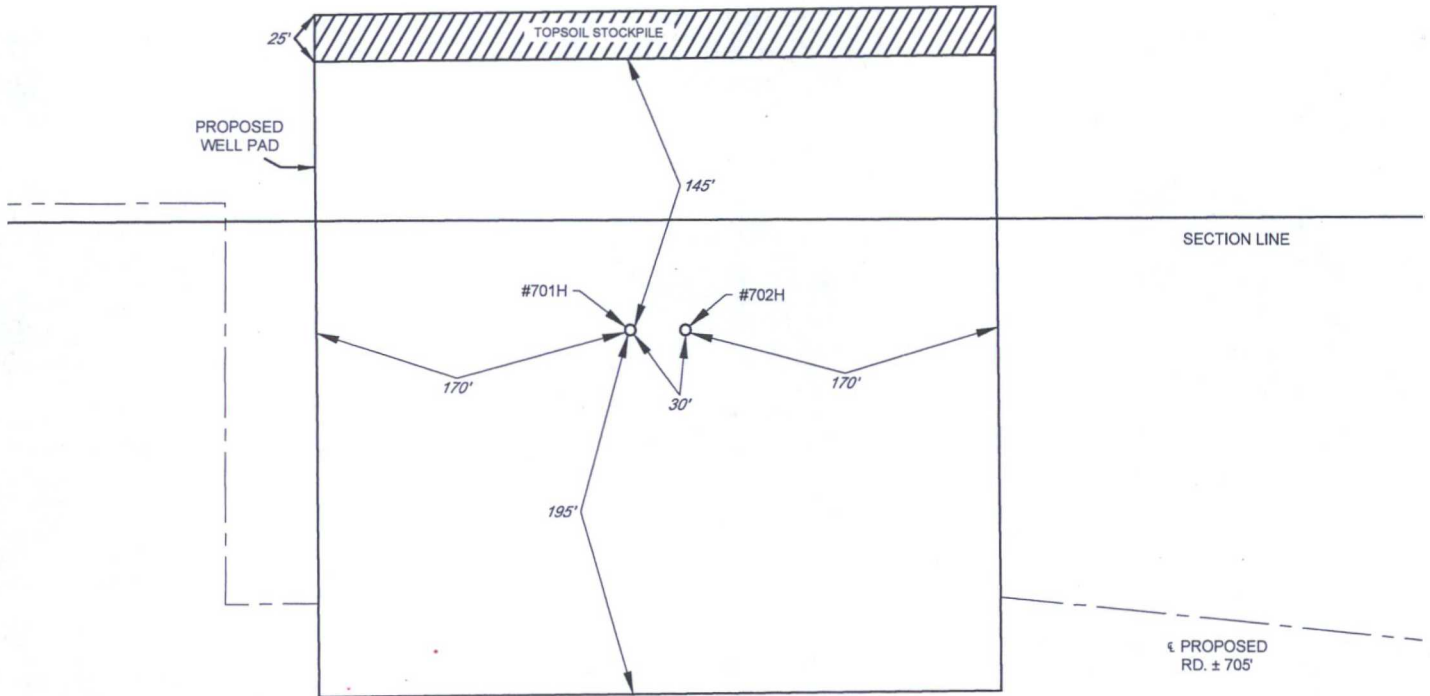
TOPOGRAPHIC
LOYALTY INNOVATION LEGACY
1400 EVERMAN PARKWAY, Ste. 197 • FT. WORTH, TEXAS 76140
TELEPHONE: (817) 744-7512 • FAX: (817) 744-7548
2903 NORTH BIG SPRING • MIDLAND, TEXAS 79705
TELEPHONE: (432) 682-1853 OR (800) 767-1653 • FAX: (432) 682-1743
WWW.TOPOGRAPHIC.COM



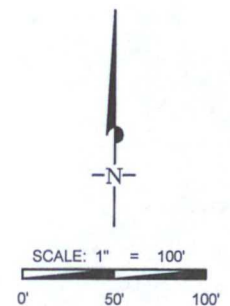
EXHIBIT 2B

SECTION 9, TOWNSHIP 25-S, RANGE 33-E, N.M.P.M.
LEA COUNTY, NEW MEXICO

DETAIL VIEW
SCALE: 1" = 100'



LEASE NAME & WELL NO.: ANTIETAM 9 FED COM #701H
#701H LATITUDE N 32.1520723 #701H LONGITUDE W 103.5841644



ALL BEARINGS, DISTANCES, AND COORDINATE VALUES CONTAINED HEREON ARE GRID
BASED UPON THE NEW MEXICO STATE PLANE COORDINATE SYSTEM, EAST ZONE OF THE
NORTH AMERICAN DATUM 1927, U.S. SURVEY FEET

THIS PROPOSED PAD SITE LOCATION SHOWN HEREON HAS BEEN SURVEYED ON THE GROUND UNDER
MY SUPERVISION AND PREPARED ACCORDING TO THE EVIDENCE FOUND AT THE TIME OF SURVEY,
AND DATA PROVIDED BY EOG RESOURCES, INC. THIS CERTIFICATION IS MADE AND LIMITED TO THOSE
PERSONS OR ENTITIES SHOWN ON THE FACE OF THIS PLAT AND IS NON-TRANSFERABLE. THIS
SURVEY IS CERTIFIED FOR THIS TRANSACTION ONLY.

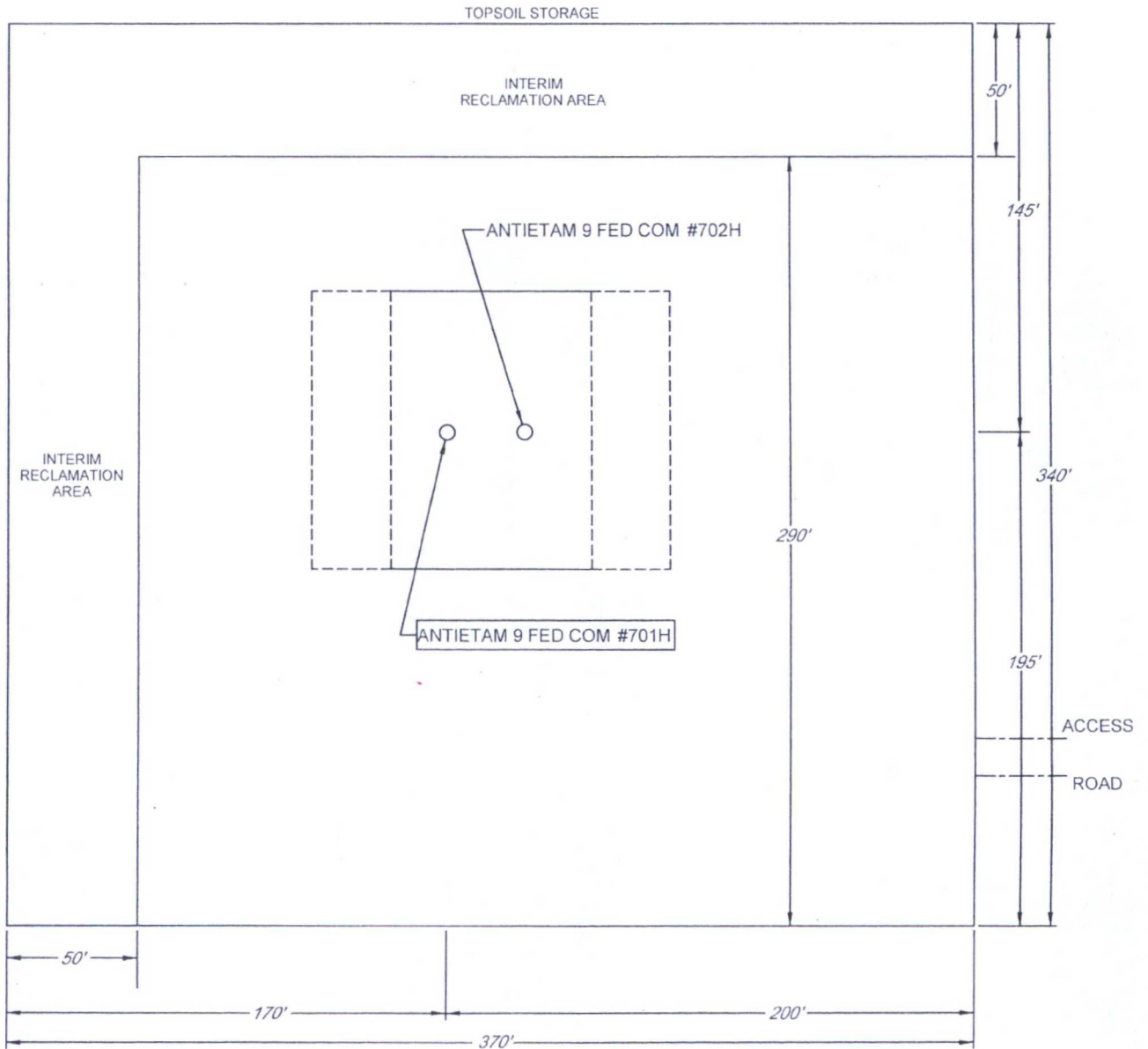


1400 EVERMAN PARKWAY, Ste. 197 • FT. WORTH, TEXAS 76140
TELEPHONE: (817) 744-7512 • FAX (817) 744-7548
2903 NORTH BIG SPRING • MIDLAND, TEXAS 79705
TELEPHONE: (432) 682-1653 OR (800) 767-1653 • FAX (432) 682-1743
WWW.TOPOGRAPHIC.COM

EXHIBIT 2C
RECLAMATION AND FACILITY DIAGRAM - PRODUCTION FACILITIES DIAGRAM

SECTION 9, TOWNSHIP 25-S, RANGE 33-E, N.M.P.M.
LEA COUNTY, NEW MEXICO

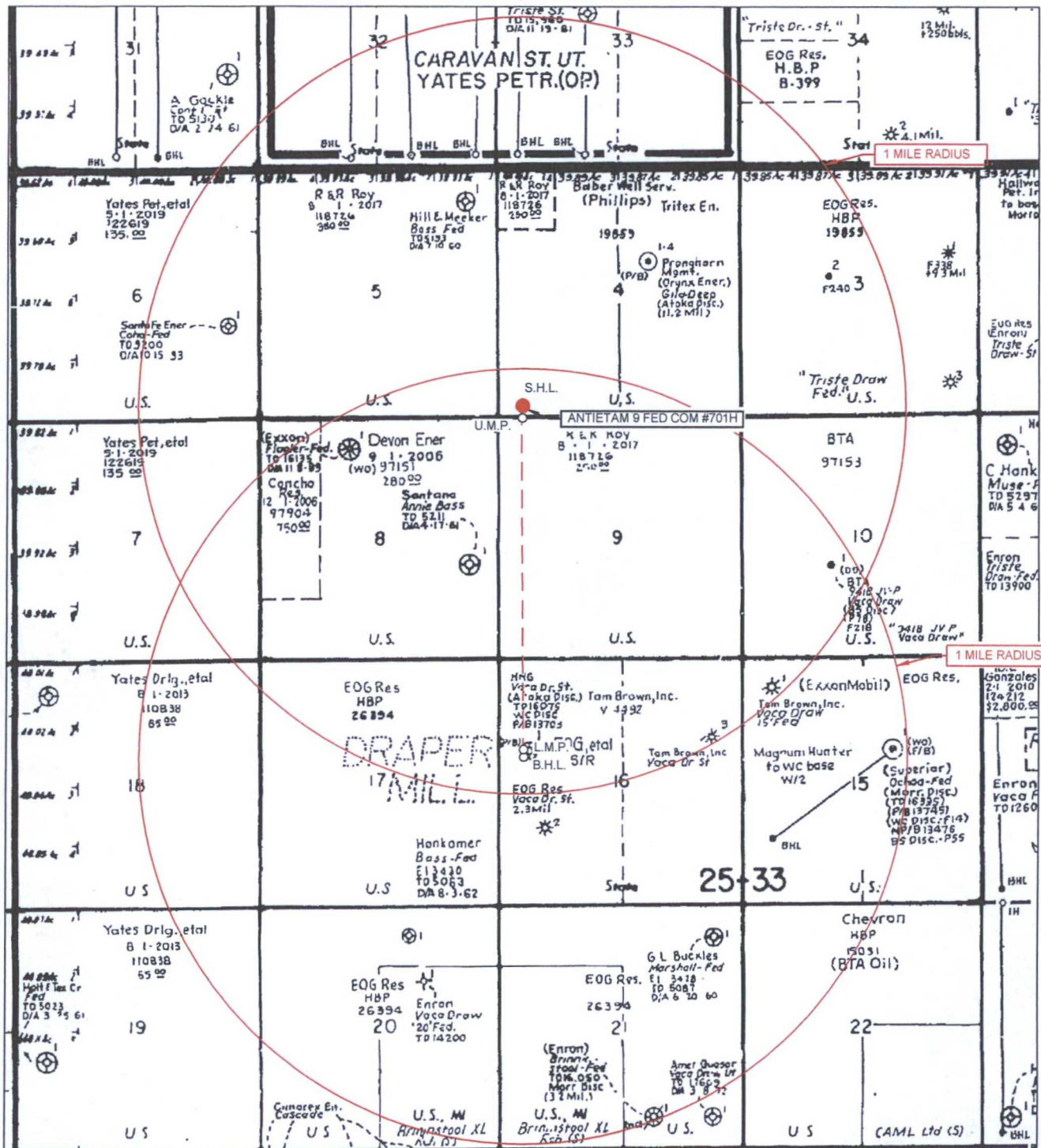
DETAIL VIEW
SCALE 1" = 60'



LEASE NAME & WELL NO.: ANTIETAM 9 FED COM #701H
#701H LATITUDE N 32.1520723 #701H LONGITUDE W 103.5841644

EXHIBIT 3

SECTION 9, TOWNSHIP 25-S, RANGE 33-E, N.M.P.M.
LEA COUNTY, NEW MEXICO



LEASE NAME & WELL NO.: ANTIETAM 9 FED COM #701H

SCALE: NTS

#701H LATITUDE N 32.1520723

#701H LONGITUDE W 103.5841644

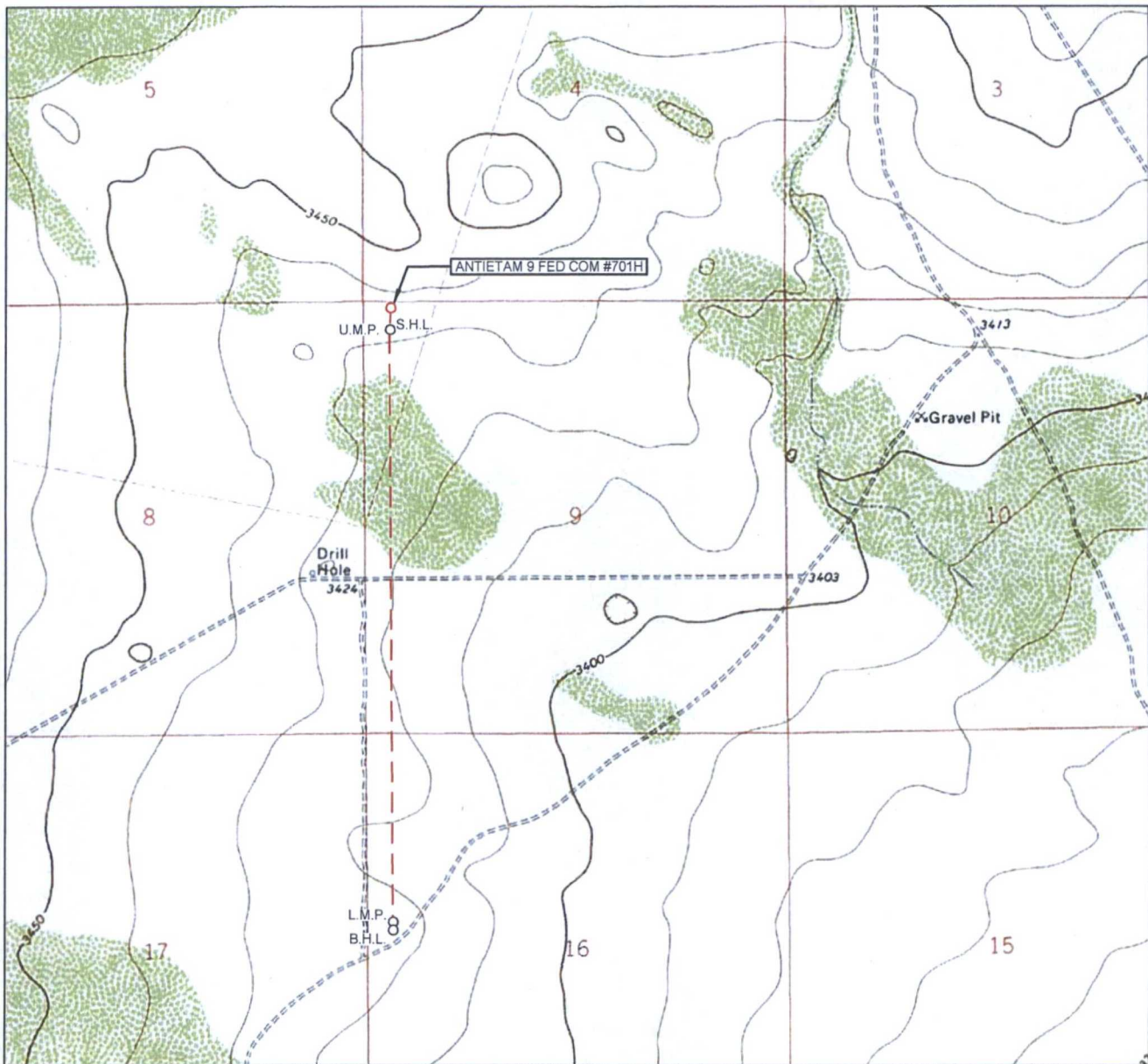
ALL BEARINGS, DISTANCES, AND COORDINATE VALUES CONTAINED HEREON ARE GRID BASED UPON THE NEW MEXICO STATE PLANE COORDINATE SYSTEM, EAST ZONE OF THE NORTH AMERICAN DATUM 1927, U.S. SURVEY FEET

THIS EASEMENT/SERVITUDE LOCATION SHOWN HEREON HAS BEEN SURVEYED ON THE GROUND UNDER MY SUPERVISION AND PREPARED ACCORDING TO THE EVIDENCE FOUND AT THE TIME OF SURVEY, AND DATA PROVIDED BY EOG RESOURCES, INC. THIS CERTIFICATION IS MADE AND LIMITED TO THOSE PERSONS OR ENTITIES SHOWN ON THE FACE OF THIS PLAT AND IS NON-TRANSFERABLE. THIS SURVEY IS CERTIFIED FOR THIS TRANSACTION ONLY.



1400 EVERMAN PARKWAY, Ste. 197 • FT. WORTH, TEXAS 76140
TELEPHONE: (817) 744-7512 • FAX (817) 744-7548
2903 NORTH BIG SPRING • MIDLAND, TEXAS 79705
TELEPHONE: (432) 682-1653 OR (800) 767-1653 • FAX (432) 682-1743
WWW.TOPOGRAPHIC.COM

LOCATION & ELEVATION VERIFICATION MAP



LEASE NAME & WELL NO.: ANTIETAM 9 FED COM #701H

SECTION 9 TWP 25-S RGE 33-E SURVEY N.M.P.M.
 COUNTY LEA STATE NM ELEVATION 3438'
 DESCRIPTION 59' FNL & 348' FWL

LATITUDE N 32.1520723 LONGITUDE W 103.5841644



SCALE: 1" = 2000'
 0' 1000' 2000'

THIS EASEMENT/SERVITUDE LOCATION SHOWN HEREON HAS BEEN SURVEYED ON THE GROUND UNDER MY SUPERVISION AND PREPARED ACCORDING TO THE EVIDENCE FOUND AT THE TIME OF SURVEY, AND DATA PROVIDED BY EOG RESOURCES, INC. THIS CERTIFICATION IS MADE AND LIMITED TO THOSE PERSONS OR ENTITIES SHOWN ON THE FACE OF THIS PLAT AND IS NON-TRANSFERABLE. THIS SURVEY IS CERTIFIED FOR THIS TRANSACTION ONLY.

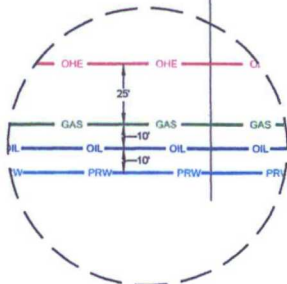
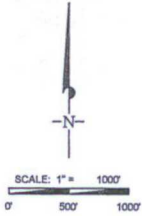
ALL BEARINGS, DISTANCES, AND COORDINATE VALUES CONTAINED HEREON ARE GRID BASED UPON THE NEW MEXICO STATE PLANE COORDINATE SYSTEM, EAST ZONE OF THE NORTH AMERICAN DATUM 1927, U.S. SURVEY FEET.



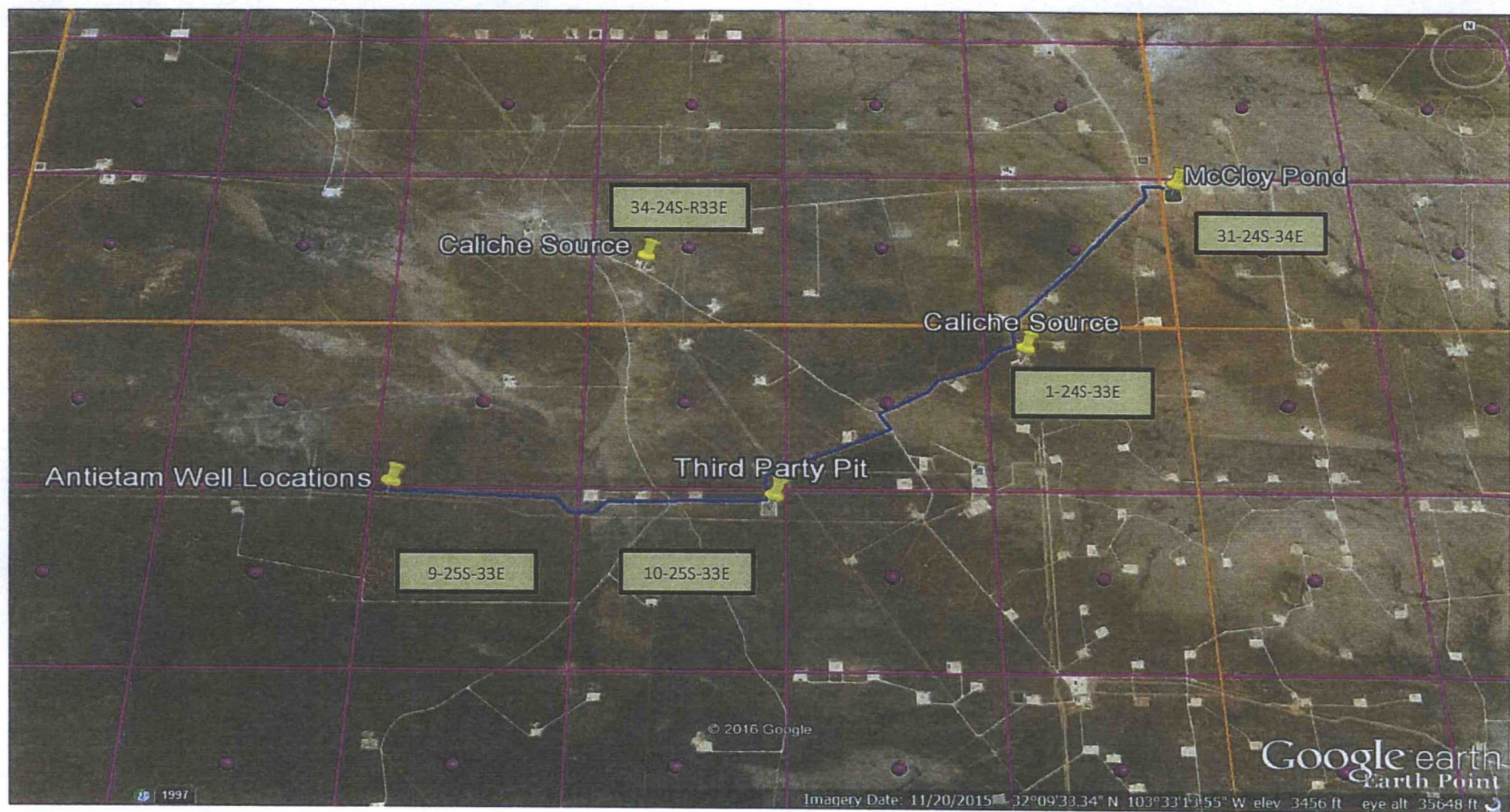
TOPOGRAPHIC
 LOYALTY INNOVATION LEGACY

1400 EVERMAN PARKWAY, Ste. 197 • FT. WORTH, TEXAS 76140
 TELEPHONE: (817) 744-7512 • FAX (817) 744-7548
 2903 NORTH BIG SPRING • MIDLAND, TEXAS 79705
 TELEPHONE: (432) 682-1653 OR (800) 767-1653 • FAX (432) 682-1743
 WWW.TOPOGRAPHIC.COM

ANTIETAM 9 FED COM CTB INFRASTRUCTURE



LINE	DESCRIPTION	LENGTH
1	PRODUCED WATER LINE -TOTAL FOOTAGE: -(WORKING PRESSURE 75-125 PSI)	14,148 FT
2	OIL SALES LINE -TOTAL FOOTAGE: -(WORKING PRESSURE 75-125 PSI)	14,378 FT
3	4" FLEX STEEL FLOWLINE -TOTAL FOOTAGE: #703H & #704H TO ANTETARIUM CTR. #703H & #704H TO #703H & #704H	3,704 FT 2,418 FT 1,290 FT
4	ELECTRIC LINE -TOTAL FOOTAGE:	14,048 FT
5	GAS SALES LINE -TOTAL FOOTAGE: -(WORKING PRESSURE 75-125 PSI)	14,314 FT
6	PROPOSED LEASE RD. -TOTAL FOOTAGE: LEASE RD. TO #703H & #704H #703H & #704H TO #703H & #704H	5,318 FT 3,629 FT 1,290 FT



Antietam Caliche & Water Source Map

Sec 9, T25S, R33E
Lea County, NM