

District I  
1625 N. French Dr., Hobbs, NM 88240  
Phone (575) 393-6161 Fax (575) 393-0726  
District II  
811 S. First St., Artesia, NM 88210  
Phone (575) 748-1283 Fax (575) 748-9720  
District III  
1000 Rio Brazos Road, Aztec, NM 87410  
Phone (505) 334-6178 Fax (505) 334-6170  
District IV  
1220 S. St. Francis Dr., Santa Fe, NM 87505  
Phone (505) 476-3460 Fax (505) 476-4000

State of New Mexico  
Energy, Minerals & Natural Resources  
Department  
OIL CONSERVATION DIVISION  
1220 South St. Francis Dr.  
Santa Fe, NM 87505

FORM C-102

Revised August 1, 2011

Submit one copy to appropriate

District Office

☐ AMENDED REPORT

WELL LOCATION AND ACREAGE DEDICATION PLAT

<sup>1</sup> API Number 30-025- <b>43478</b>	<sup>2</sup> Pool Code 98180	<sup>3</sup> Pool Name WC-025 G-09 S253309A; Upper Wolfcamp
<sup>4</sup> Property Code <b>317131</b>	<sup>5</sup> Property Name ANTIETAM 9 FED COM	<sup>6</sup> Well Number #702H
<sup>7</sup> GRID No. 7377	<sup>8</sup> Operator Name EOG RESOURCES, INC.	<sup>9</sup> Elevation 3438'

<sup>10</sup>Surface Location

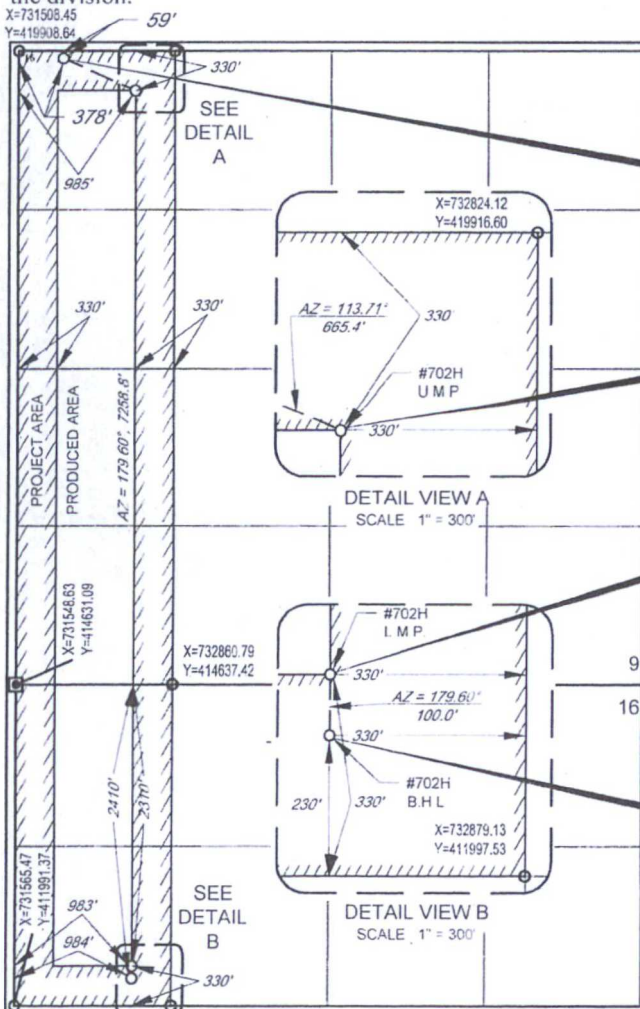
UL or lot no.	Section	Township	Range	Lot Idn	Feet from the	North/South line	Feet from the	East/West line	County
D	9	25-S	33-E	-	59'	NORTH	378'	WEST	LEA

UL or lot no.	Section	Township	Range	Lot Idn	Feet from the	North/South line	Feet from the	East/West line	County
E	16	25-S	33-E	-	2410'	NORTH	984'	WEST	LEA

<sup>12</sup> Dedicated Acres 240.00	<sup>13</sup> Joint or Infill	<sup>14</sup> Consolidation Code	<sup>15</sup> Order No.
---	-------------------------------	----------------------------------	-------------------------

No allowable will be assigned to this completion until all interests have been consolidated or a non-standard unit has been approved by the division.

X=731508.45  
Y=419908.84

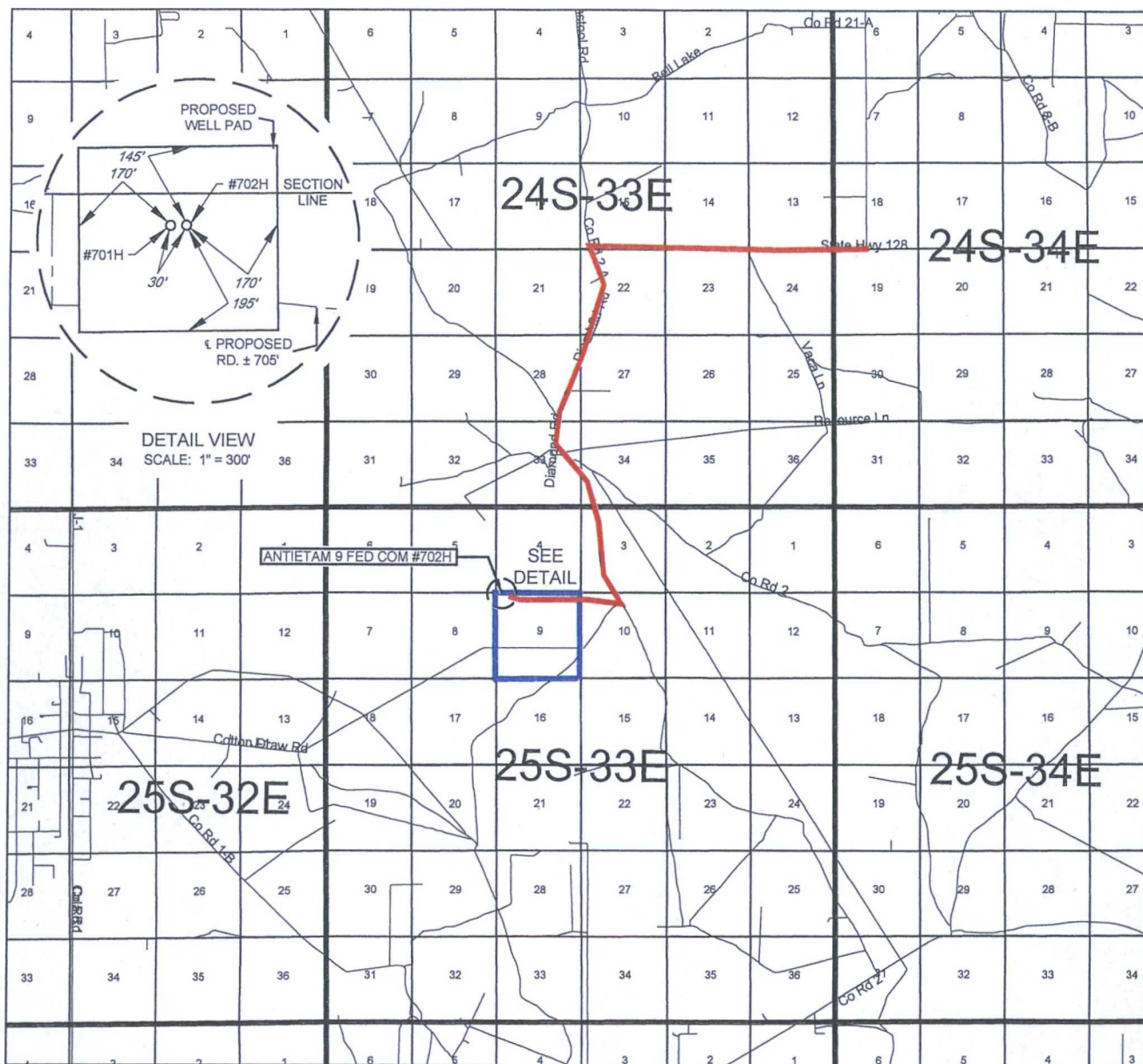


<sup>16</sup> SURFACE LOCATION NEW MEXICO EAST	
NAD 1927 X=731887 Y=419852 LAT. N 32.1520722 LONG. W 103.5840675	NAD 1983 X=773072 Y=419910 LAT. N 32.1521966 LONG. W 103.5845417
<sup>17</sup> UPPER MOST PERF. NEW MEXICO EAST	
NAD 1927 X=732496 Y=419585 LAT. N 32.1513251 LONG. W 103.5821049	NAD 1983 X=773681 Y=419643 LAT. N 32.1514495 LONG. W 103.5825790
<sup>18</sup> LOWER MOST PERF. NEW MEXICO EAST	
NAD 1927 X=732547 Y=412326 LAT. N 32.1313716 LONG. W 103.5821057	NAD 1983 X=773733 Y=412384 LAT. N 32.1314961 LONG. W 103.5825786
<sup>19</sup> BOTTOM HOLE LOCATION NEW MEXICO EAST	
NAD 1927 X=732548 Y=412226 LAT. N 32.1310967 LONG. W 103.5821057	NAD 1983 X=773734 Y=412284 LAT. N 32.1312212 LONG. W 103.5825785

<sup>17</sup> OPERATOR CERTIFICATION	
I hereby certify that the information contained herein is true and complete to the best of my knowledge and belief, and that this organization either owns a working interest or unleased mineral interest in the land including the proposed bottom hole location or has a right to drill this well at this location pursuant to a contract with an owner of such a mineral or working interest, or to a voluntary pooling agreement or a compulsory pooling order heretofore entered by the division.	
Signature <i>Stan Wagner</i>	Date 8/16/16
Printed Name Stan Wagner	
E-mail Address	
<sup>18</sup> SURVEYOR CERTIFICATION	
I hereby certify that the well location shown on this plat was plotted from field notes of actual surveys made by me or under my supervision, and that the same is true to the best of my belief.	
Date of Survey 07/06/2016	
Signature and Seal of Professional Surveyor <i>Michael Brown</i>	
Certificate Number 18329	



# EXHIBIT 2 VICINITY MAP



LEASE NAME & WELL NO.: ANTIETAM 9 FED COM #702H

SECTION 9 TWP 25-S RGE 33-E SURVEY N.M.P.M.

COUNTY LEA STATE NM

DESCRIPTION 59' FNL & 378' FWL

## DISTANCE & DIRECTION

FROM INT. OF NM-128 W & DELAWARE BASIN RD., GO WEST ON NM-128 W ±3.3 MILES, THENCE SOUTH (LEFT) ON DIAMOND RD. ±2.5 MILES, THENCE SOUTHEAST (LEFT) ON C.R. 2 ±0.2 MILES, THENCE SOUTHEAST (RIGHT) AT VACA LN. ±1 MILE, THENCE WEST (RIGHT) ON LEASE RD. ±1.2 MILES TO A POINT 200 FEET SOUTHEAST OF THE LOCATION.

THIS EASEMENT/SERVITUDE LOCATION SHOWN HEREON HAS BEEN SURVEYED ON THE GROUND UNDER MY SUPERVISION AND PREPARED ACCORDING TO THE EVIDENCE FOUND AT THE TIME OF SURVEY, AND DATA PROVIDED BY EOG RESOURCES, INC. THIS CERTIFICATION IS MADE AND LIMITED TO THOSE PERSONS OR ENTITIES SHOWN ON THE FACE OF THIS PLAT AND IS NON-TRANSFERABLE. THIS SURVEY IS CERTIFIED FOR THIS TRANSACTION ONLY.

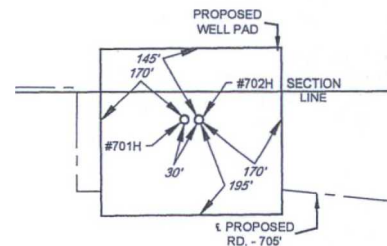
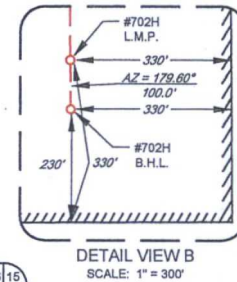
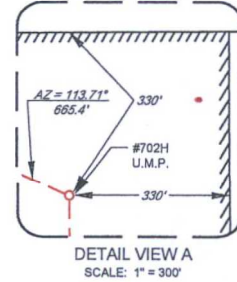
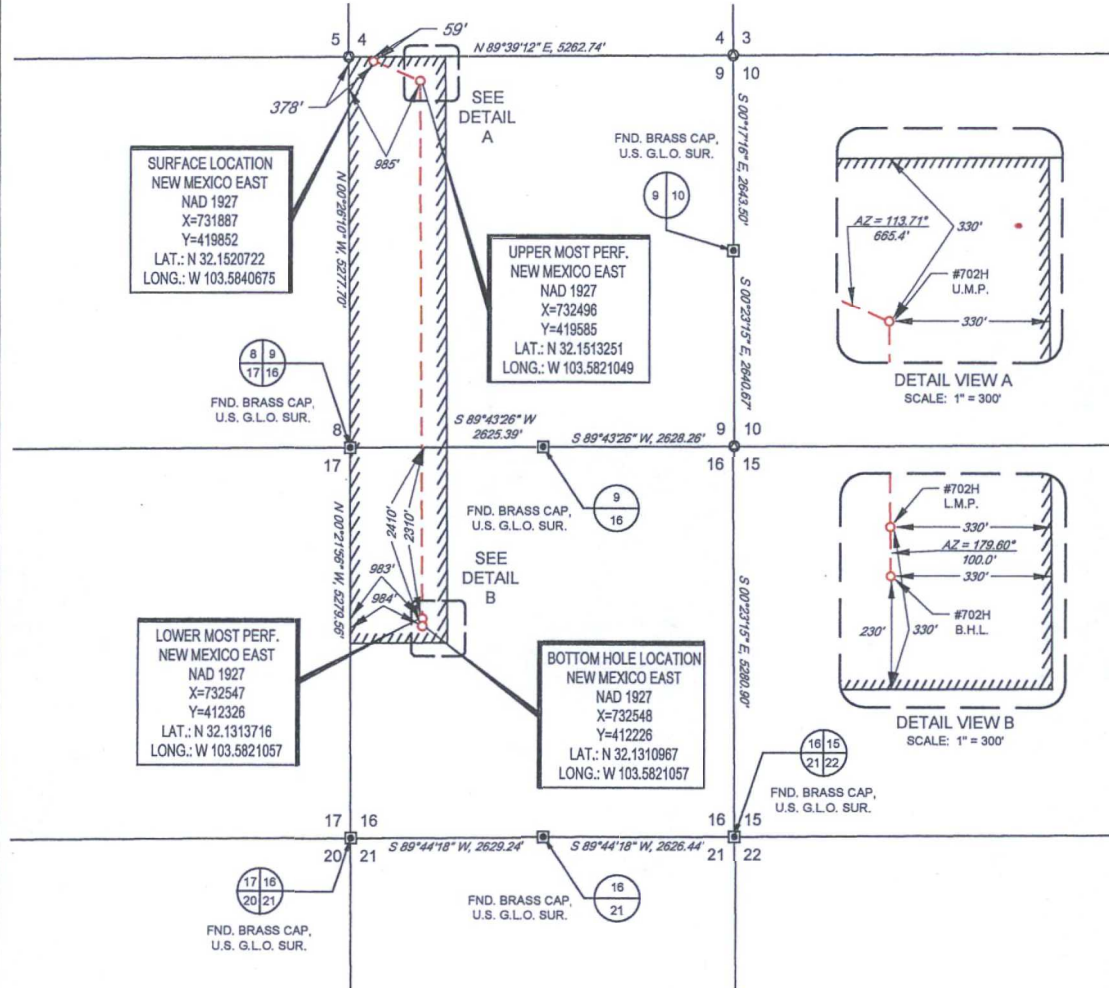
ALL BEARINGS, DISTANCES, AND COORDINATE VALUES CONTAINED HEREON ARE GRID BASED UPON THE NEW MEXICO STATE PLANE COORDINATE SYSTEM, EAST ZONE OF THE NORTH AMERICAN DATUM 1927, U.S. SURVEY FEET.



1400 EVERMAN PARKWAY, Ste. 197 • FT. WORTH, TEXAS 76140  
TELEPHONE: (817) 744-7512 • FAX (817) 744-7548  
2903 NORTH BIG SPRING • MIDLAND, TEXAS 79705  
TELEPHONE: (432) 682-1653 OR (800) 767-1653 • FAX (432) 682-1743  
WWW.TOPOGRAPHIC.COM

**EXHIBIT 2A**

SECTION 9, TOWNSHIP 25-S, RANGE 33-E, N.M.P.M.  
LEA COUNTY, NEW MEXICO



LEASE NAME & WELL NO.: ANTIETAM 9 FED COM #702H

SECTION 9 TWP. 25-S RGE. 33-E SURVEY N.M.P.M.  
COUNTY LEA STATE NM  
DESCRIPTION 59' FNL & 378' FWL

**DISTANCE & DIRECTION**  
FROM INT. OF NM-128 W & DELAWARE BASIN RD. GO WEST ON NM-128 W  
±3.3 MILES. THENCE SOUTH (LEFT) ON DIAMOND RD. ±2.5 MILES. THENCE  
SOUTHEAST (LEFT) ON C.R. 2 ±0.2 MILES. THENCE SOUTHEAST (RIGHT)  
AT VACA LN. ±1 MILE. THENCE WEST (RIGHT) ON LEASE RD. ±1.2 MILES TO  
A POINT 200 FEET SOUTHEAST OF THE LOCATION.

ALL BEARINGS, DISTANCES, AND COORDINATE VALUES CONTAINED HEREON ARE GRID  
BASED UPON THE NEW MEXICO STATE PLANE COORDINATE SYSTEM, EAST ZONE OF THE  
NORTH AMERICAN DATUM 1927, U.S. SURVEY FEET  
THIS EASEMENT/SERVITUDE LOCATION SHOWN HEREON HAS BEEN SURVEYED ON THE GROUND  
UNDER MY SUPERVISION AND PREPARED ACCORDING TO THE EVIDENCE FOUND AT THE TIME OF  
SURVEY, AND DATA PROVIDED BY EOG RESOURCES, INC. THIS CERTIFICATION IS MADE AND LIMITED  
TO THOSE PERSONS OR ENTITIES SHOWN ON THE FACE OF THIS PLAT AND IS NON-TRANSFERABLE.  
THIS SURVEY IS CERTIFIED FOR THIS TRANSACTION ONLY.

DETAIL VIEW  
SCALE: 1" = 300'



Michael Blake Brown, P.S. No. 18329  
JULY 19, 2016

**TOPOGRAPHIC**  
LOYALTY INNOVATION LEGACY  
1400 EVERMAN PARKWAY, Ste. 197 • FT. WORTH, TEXAS 76140  
TELEPHONE: (817) 744-7512 • FAX: (817) 744-7548  
2903 NORTH BIG SPRING • MIDLAND, TEXAS 79705  
TELEPHONE: (432) 682-1653 OR (800) 767-1653 • FAX: (432) 682-1743  
WWW.TOPOGRAPHIC.COM

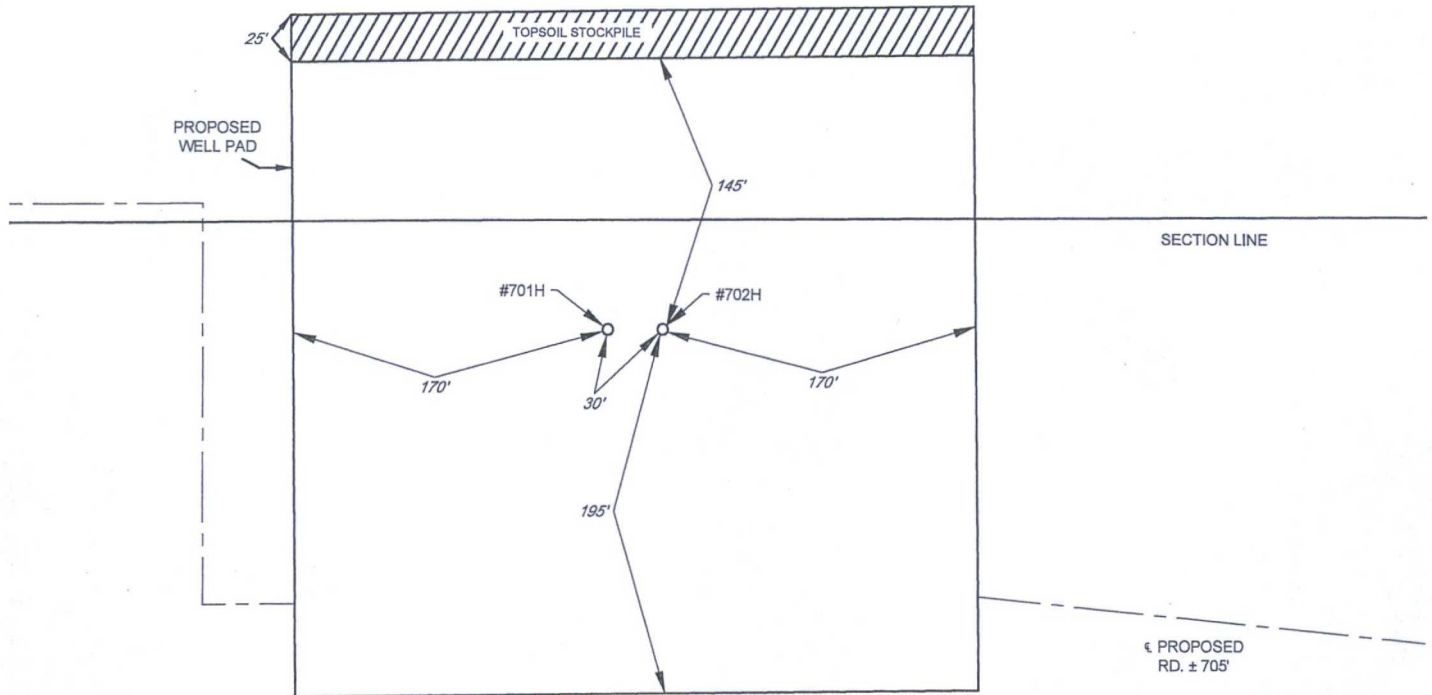




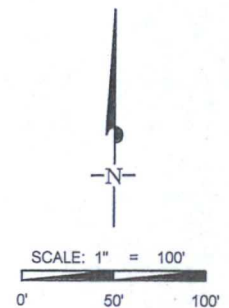
## EXHIBIT 2B

SECTION 9, TOWNSHIP 25-S, RANGE 33-E, N.M.P.M.  
LEA COUNTY, NEW MEXICO

DETAIL VIEW  
SCALE: 1" = 100'



LEASE NAME & WELL NO.: ANTIETAM 9 FED COM #702H  
#702H LATITUDE N 32.1520722 #702H LONGITUDE W 103.5840675



ALL BEARINGS, DISTANCES, AND COORDINATE VALUES CONTAINED HEREON ARE GRID  
BASED UPON THE NEW MEXICO STATE PLANE COORDINATE SYSTEM, EAST ZONE OF THE  
NORTH AMERICAN DATUM 1927, U.S. SURVEY FEET

THIS PROPOSED PAD SITE LOCATION SHOWN HEREON HAS BEEN SURVEYED ON THE GROUND UNDER  
MY SUPERVISION AND PREPARED ACCORDING TO THE EVIDENCE FOUND AT THE TIME OF SURVEY,  
AND DATA PROVIDED BY EOG RESOURCES, INC. THIS CERTIFICATION IS MADE AND LIMITED TO THOSE  
PERSONS OR ENTITIES SHOWN ON THE FACE OF THIS PLAT AND IS NON-TRANSFERABLE. THIS  
SURVEY IS CERTIFIED FOR THIS TRANSACTION ONLY.



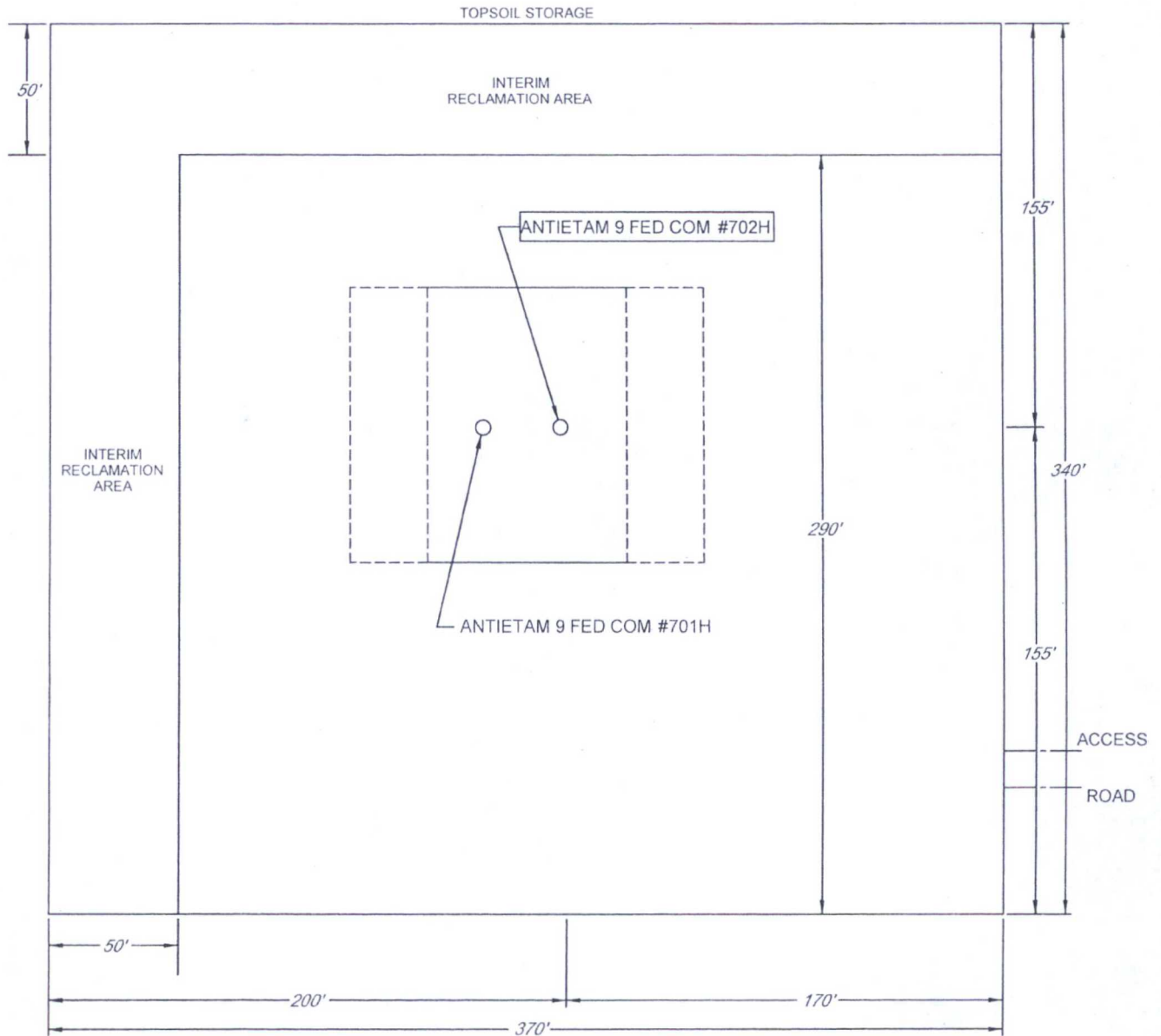
**TOPOGRAPHIC**  
LOYALTY INNOVATION LEGACY

1400 EVERMAN PARKWAY, Ste. 197 • FT. WORTH, TEXAS 76140  
TELEPHONE: (817) 744-7512 • FAX (817) 744-7548  
2903 NORTH BIG SPRING • MIDLAND, TEXAS 79705  
TELEPHONE: (432) 682-1653 OR (800) 767-1653 • FAX (432) 682-1743  
WWW.TOPOGRAPHIC.COM

EXHIBIT 2C  
RECLAMATION AND FACILITY DIAGRAM - PRODUCTION FACILITIES DIAGRAM

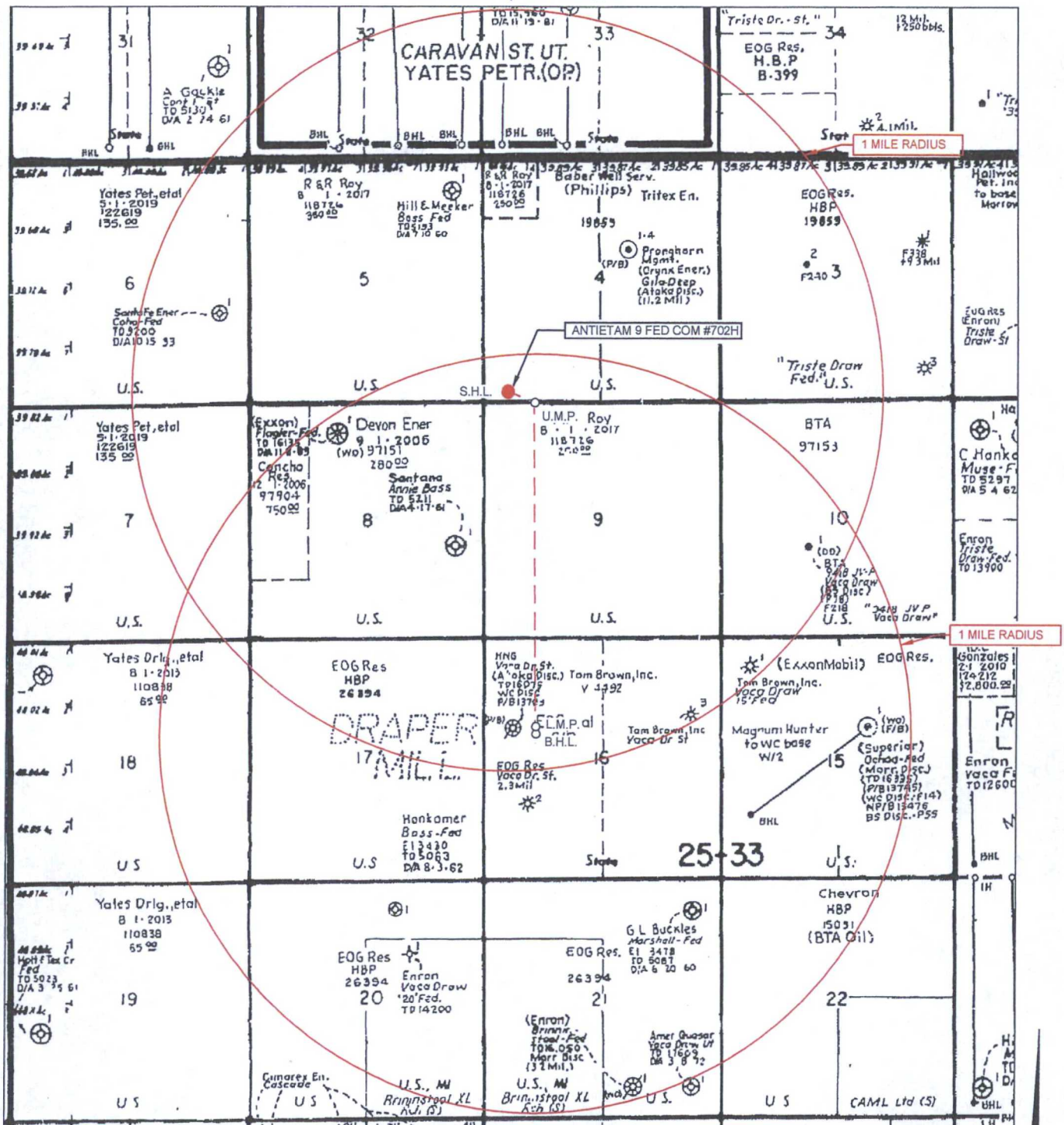
SECTION 9, TOWNSHIP 25-S, RANGE 33-E, N.M.P.M.  
LEA COUNTY, NEW MEXICO

DETAIL VIEW  
SCALE: 1" = 60'



LEASE NAME & WELL NO.: ANTIETAM 9 FED COM #702H  
#702H LATITUDE N 32.1520722 #702H LONGITUDE W 103.5840675

## EXHIBIT 3

SECTION 9, TOWNSHIP 25-S, RANGE 33-E, N.M.P.M.  
LEA COUNTY, NEW MEXICO

LEASE NAME &amp; WELL NO.: ANTIETAM 9 FED COM #702H

SCALE: NTS

#702H LATITUDE N 32.1520722

#702H LONGITUDE W 103.5840675

ALL BEARINGS, DISTANCES, AND COORDINATE VALUES CONTAINED HEREON ARE GRID  
BASED UPON THE NEW MEXICO STATE PLANE COORDINATE SYSTEM, EAST ZONE OF THE  
NORTH AMERICAN DATUM 1927, U.S. SURVEY FEET

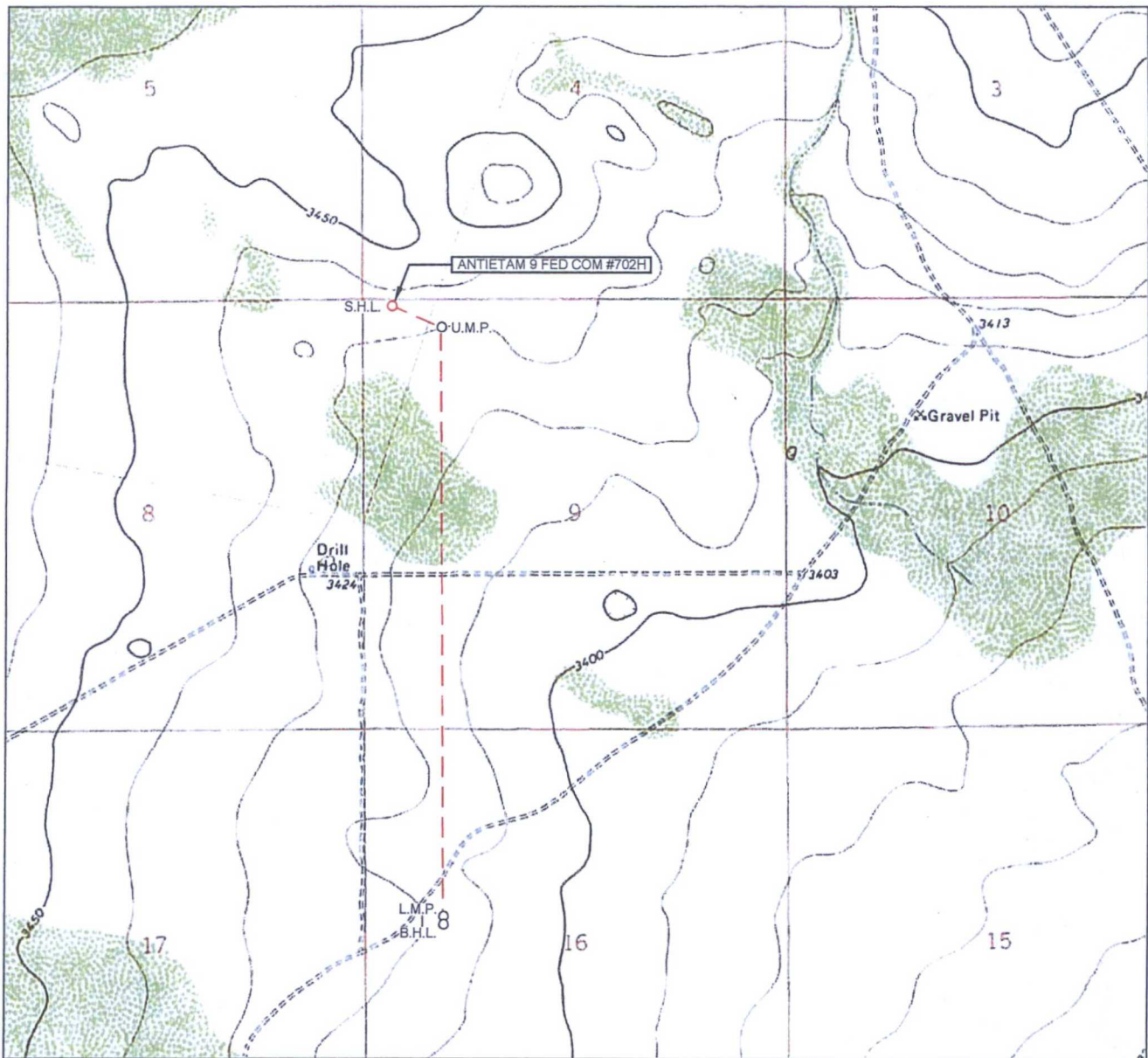
THIS EASEMENT/SERVITUDE LOCATION SHOWN HEREON HAS BEEN SURVEYED ON THE GROUND  
UNDER MY SUPERVISION AND PREPARED ACCORDING TO THE EVIDENCE FOUND AT THE TIME OF  
SURVEY, AND DATA PROVIDED BY EOG RESOURCES, INC. THIS CERTIFICATION IS MADE AND LIMITED  
TO THOSE PERSONS OR ENTITIES SHOWN ON THE FACE OF THIS PLAT AND IS NON-TRANSFERABLE.  
THIS SURVEY IS CERTIFIED FOR THIS TRANSACTION ONLY.



1400 EVERMAN PARKWAY, Ste. 197 • FT. WORTH, TEXAS 76140  
TELEPHONE: (817) 744-7512 • FAX (817) 744-7548  
2903 NORTH BIG SPRING • MIDLAND, TEXAS 79705  
TELEPHONE: (432) 682-1653 OR (800) 767-1653 • FAX (432) 682-1743  
WWW.TOPOGRAPHIC.COM



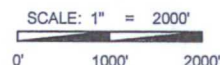
# LOCATION & ELEVATION VERIFICATION MAP



LEASE NAME & WELL NO.: ANTIETAM 9 FED COM #702H

SECTION 9 TWP 25-S RGE 33-E SURVEY N.M.P.M.  
 COUNTY LEA STATE NM ELEVATION 3438'  
 DESCRIPTION 59' FNL & 378' FWL

LATITUDE N 32.1520722 LONGITUDE W 103.5840675



THIS EASEMENT/SERVITUDE LOCATION SHOWN HEREON HAS BEEN SURVEYED ON THE GROUND UNDER MY SUPERVISION AND PREPARED ACCORDING TO THE EVIDENCE FOUND AT THE TIME OF SURVEY, AND DATA PROVIDED BY EOG RESOURCES, INC. THIS CERTIFICATION IS MADE AND LIMITED TO THOSE PERSONS OR ENTITIES SHOWN ON THE FACE OF THIS PLAT AND IS NON-TRANSFERABLE. THIS SURVEY IS CERTIFIED FOR THIS TRANSACTION ONLY.

ALL BEARINGS, DISTANCES, AND COORDINATE VALUES CONTAINED HEREON ARE GRID BASED UPON THE NEW MEXICO STATE PLANE COORDINATE SYSTEM, EAST ZONE OF THE NORTH AMERICAN DATUM 1927, U.S. SURVEY FEET.



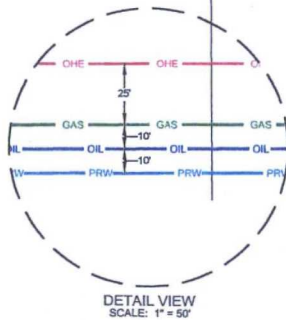
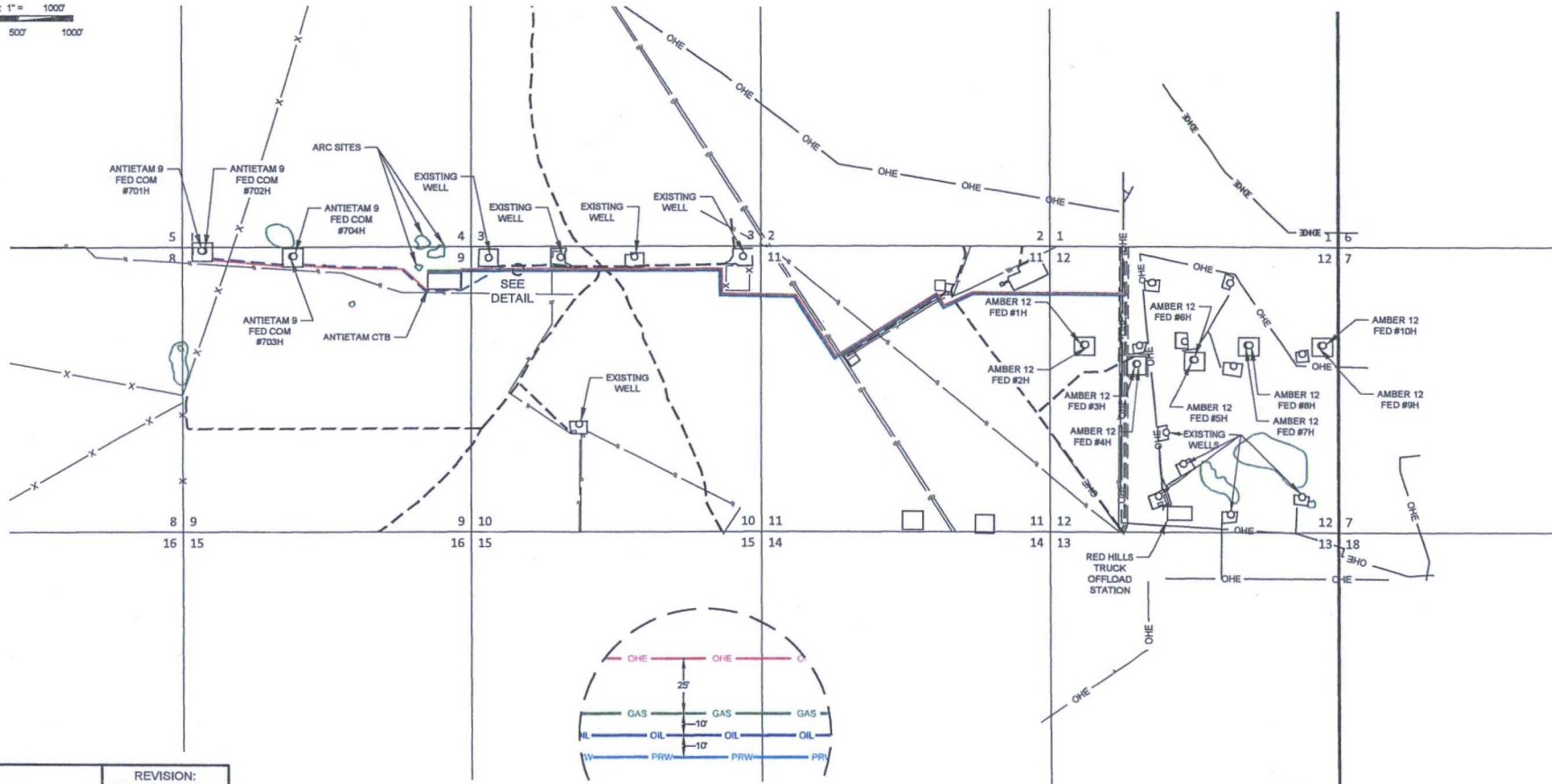
**TOPOGRAPHIC**  
 LOYALTY INNOVATION LEGACY

1400 EVERMAN PARKWAY, Ste. 197 • FT. WORTH, TEXAS 76140  
 TELEPHONE: (817) 744-7512 • FAX (817) 744-7548  
 2903 NORTH BIG SPRING • MIDLAND, TEXAS 79705  
 TELEPHONE: (432) 682-1653 OR (800) 767-1653 • FAX (432) 682-1743  
 WWW.TOPOGRAPHIC.COM

# EXHIBIT 5

SECTIONS 4,5,8,9,10,11 & 12, TOWNSHIP 25 SOUTH, RANGE 33 EAST, N.M.P.M.  
LEA COUNTY, NEW MEXICO

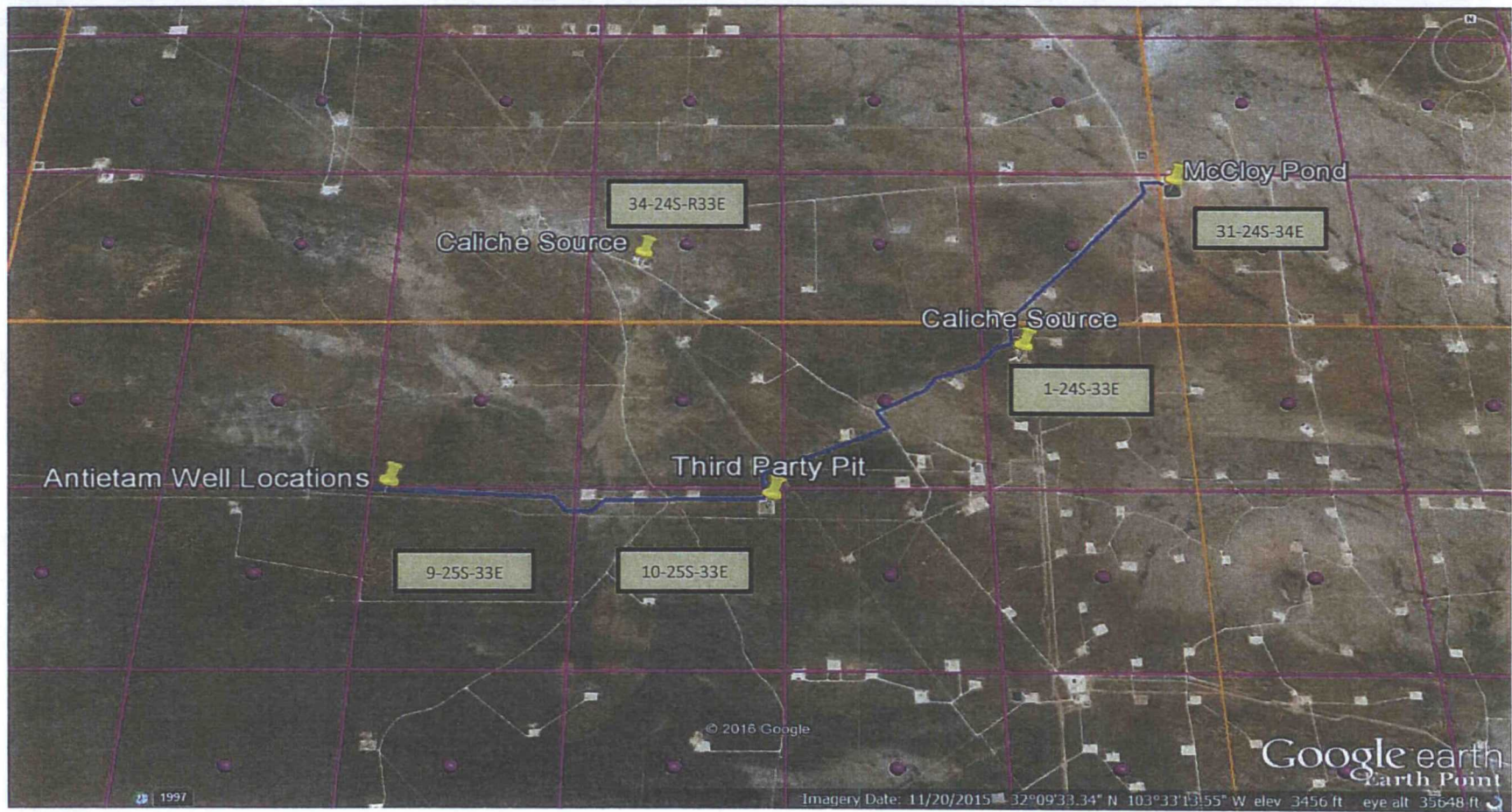
## ANTIETAM 9 FED COM CTB INFRASTRUCTURE



ANTIETAM 9 FED COM CTB INFRASTRUCTURE	REVISION:	
	A.V.F.	04/06/2016
DATE: 02/16/16	G.L.H.	07/26/2016
FILE: 04-ANTIETAM9FEDCOM CTB INFRASTRUCTURE.DWG		
DRAWN BY: GJU		
SHEET: 1 OF 1		

PRODUCED WATERLINE -TOTAL FOOTAGE: 14,348 FT -WORKING PRESSURE 75-125 PSI	ELECTRIC LINE -TOTAL FOOTAGE: 14,048 FT
OIL SALES LINE -TOTAL FOOTAGE: 14,376 FT -WORKING PRESSURE 75-125 PSI	GAS SALES LINE -TOTAL FOOTAGE: 14,314 FT -WORKING PRESSURE 75-125 PSI
4" FLEX STEEL FLOWLINE -TOTAL FOOTAGE: 3,708 FT -LEASE RD. TO #701H & #704H: 2,418 FT -#701H & #702H TO #703H & #704H: 1,290 FT	PROPOSED LEASE RD. -TOTAL FOOTAGE: 5,218 FT -LEASE RD. TO #701H & #704H: 3,928 FT -#701H & #702H TO #703H & #704H: 1,290 FT





### Antietam Caliche & Water Source Map

Sec 9, T25S, R33E

Lea County, NM

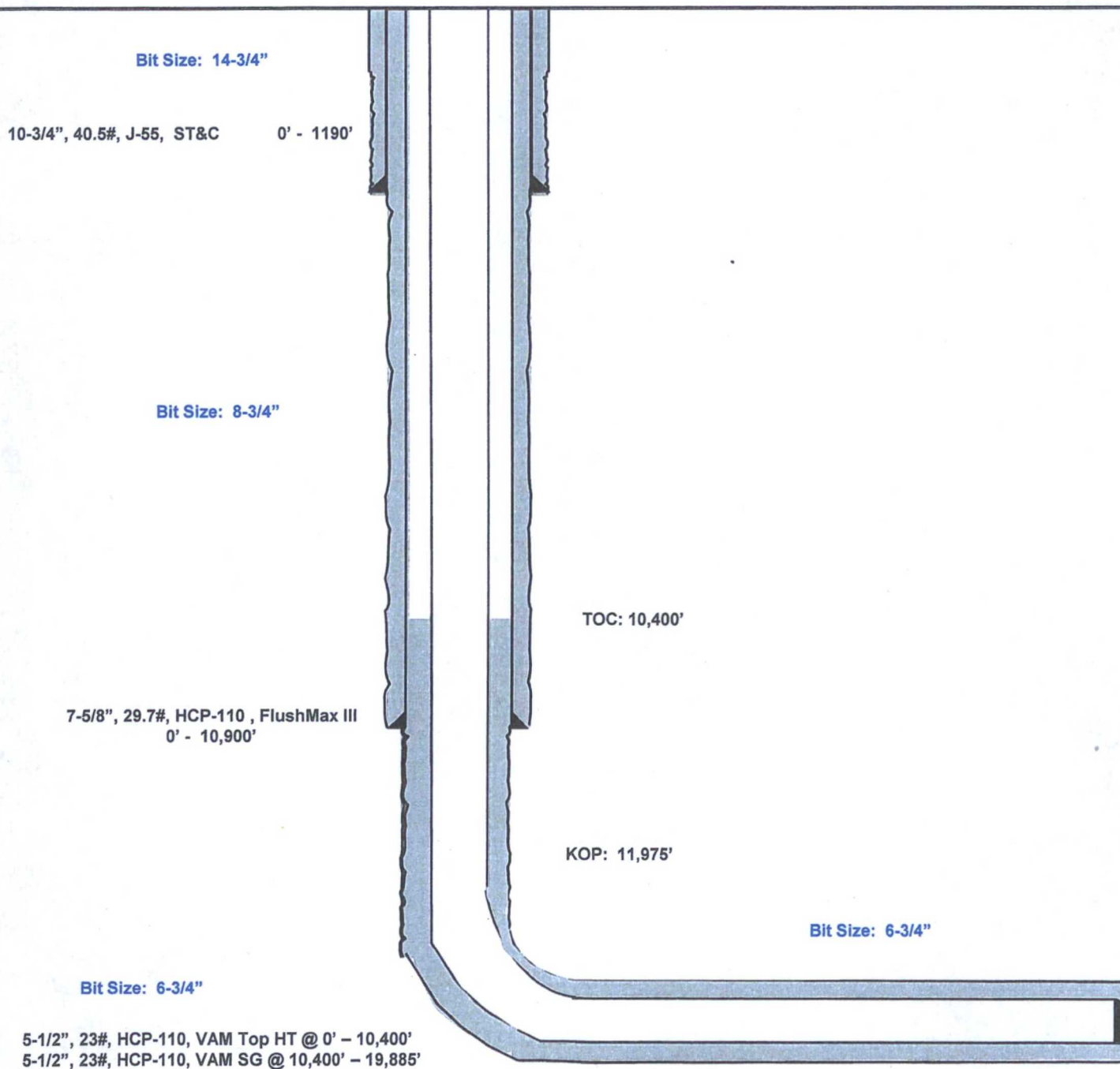
Antietam 9 Fed Com #702H

Lea County, New Mexico  
Proposed Wellbore

59' FNL  
378' FWL  
Section 9  
T-25-S, R-33-E

API: 30-025-\*\*\*\*\*

KB: 3,463'  
GL: 3,438'



Lateral: 19,885' MD, 12,430' TVD  
Upper Most Perf:  
330' FNL & 378' FWL Sec. 9  
Lower Most Perf:  
2310' FNL & 983' FWL Sec. 16  
BH Location: 2410' FNL & 984' FWL  
Section 16  
T-25-S, R-33-E