

District I  
1625 N French Dr., Hobbs, NM 88240  
Phone (575) 393-6161 Fax: (575) 393-6102  
District II  
811 S. First St., Artesia, NM 88210  
Phone (575) 748-1283 Fax: (575) 748-9720  
District III  
1000 Rio Brazos Road, Aztec, NM 87410  
Phone (505) 334-6178 Fax: (505) 334-6170  
District IV  
1220 S. St. Francis Dr., Santa Fe, NM 87505  
Phone (505) 476-3460 Fax: (505) 476-3460

**HOBBS OGD**

NOV 28 2016

**RECEIVED**

State of New Mexico  
Energy, Minerals & Natural Resources  
Department  
OIL CONSERVATION DIVISION  
1220 South St. Francis Dr.  
Santa Fe, NM 87505

FORM C-102

Revised August 1, 2011

Submit one copy to appropriate

District Office

☐ AMENDED REPORT

**WELL LOCATION AND ACREAGE DEDICATION PLAT**

<sup>1</sup> API Number 30-025- <b>43479</b>	<sup>2</sup> Pool Code 98180	<sup>3</sup> Pool Name WC-025 G-09 S253309A; Upper Wolfcamp
<sup>4</sup> Property Code <b>317131</b>	<sup>5</sup> Property Name <b>ANTIETAM 9 FED COM</b>	
<sup>6</sup> Well Number <b>#703H</b>	<sup>7</sup> Elevation <b>3440'</b>	
<sup>8</sup> OGRID No. 7377	<sup>9</sup> Operator Name <b>EOG RESOURCES, INC.</b>	

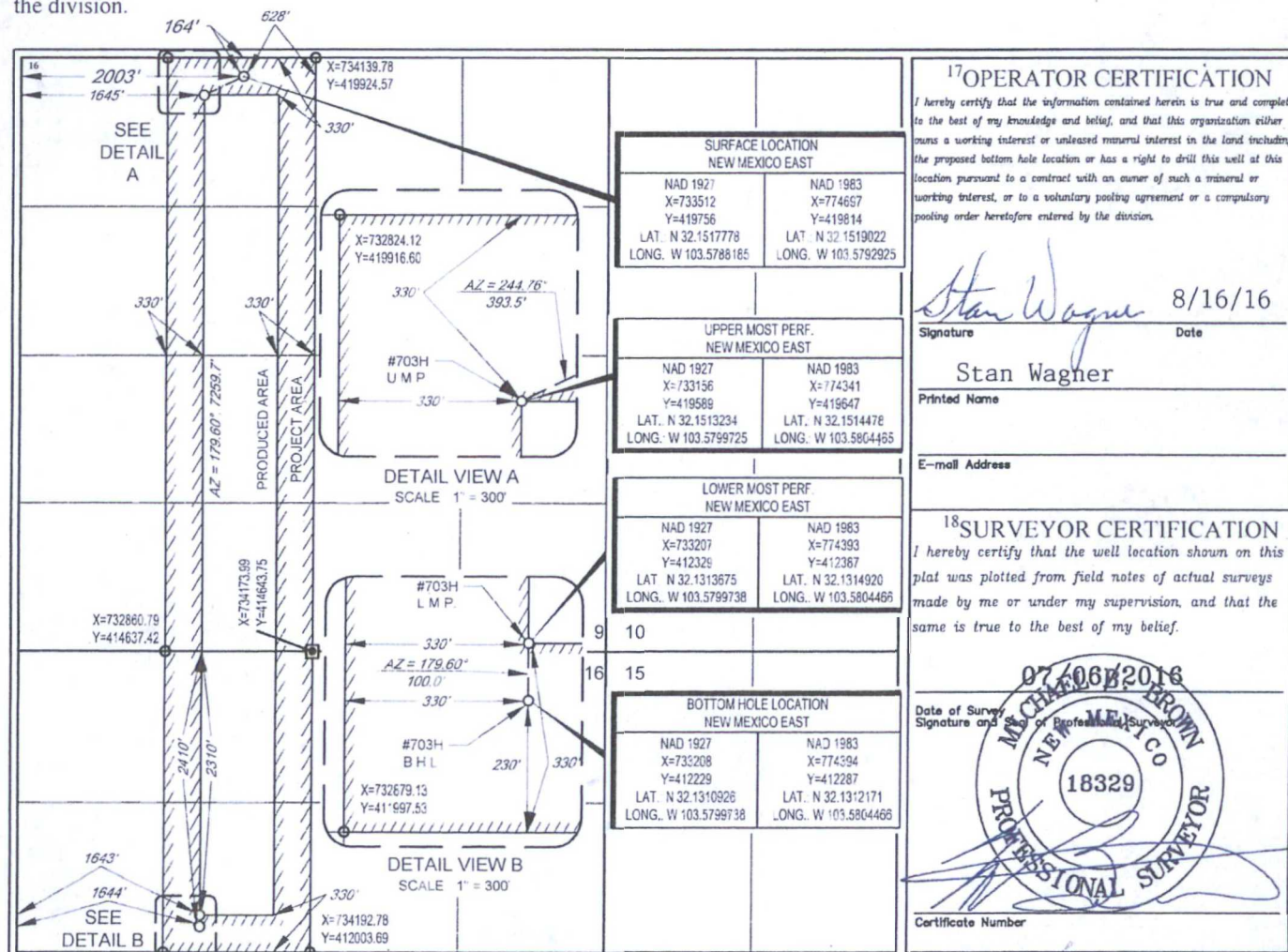
**<sup>10</sup>Surface Location**

UL or lot no.	Section	Township	Range	Lot Idn	Feet from the	North/South line	Feet from the	East/West line	County
<b>C</b>	<b>9</b>	<b>25-S</b>	<b>33-E</b>	<b>-</b>	<b>164'</b>	<b>NORTH</b>	<b>2003'</b>	<b>WEST</b>	<b>LEA</b>

UL or lot no.	Section	Township	Range	Lot Idn	Feet from the	North/South line	Feet from the	East/West line	County
<b>F</b>	<b>16</b>	<b>25-S</b>	<b>33-E</b>	<b>-</b>	<b>2410'</b>	<b>NORTH</b>	<b>1644'</b>	<b>WEST</b>	<b>LEA</b>

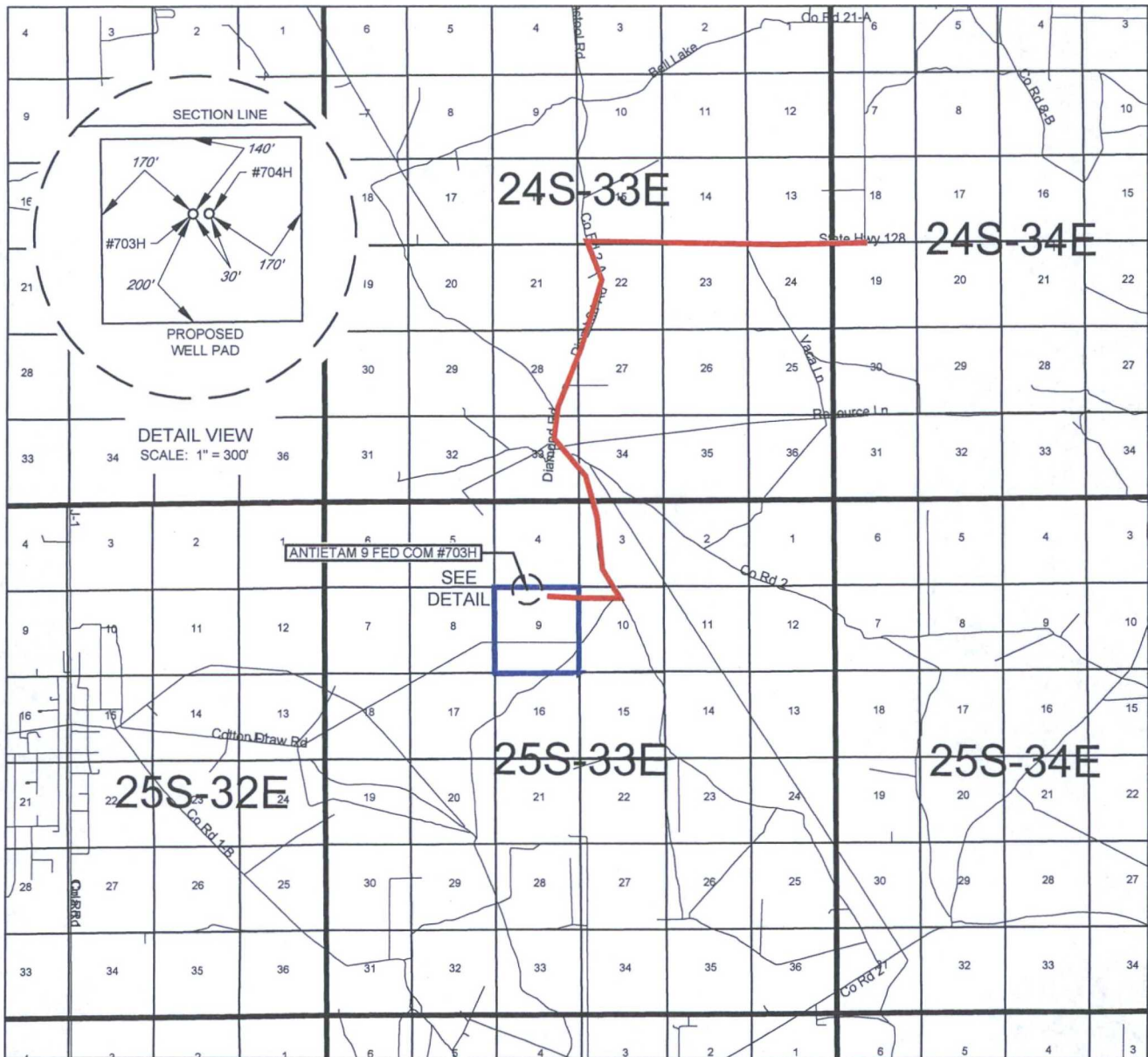
<sup>12</sup> Dedicated Acres <b>240.00</b>	<sup>13</sup> Joint or Infill	<sup>14</sup> Consolidation Code	<sup>15</sup> Order No.
--	-------------------------------	----------------------------------	-------------------------

No allowable will be assigned to this completion until all interests have been consolidated or a non-standard unit has been approved by the division.





# EXHIBIT 2 VICINITY MAP



LEASE NAME & WELL NO.: ANTIETAM 9 FED COM #703H

SECTION 9 TWP. 25-S RGE. 33-E SURVEY N.M.P.M.  
COUNTY LEA STATE NM  
DESCRIPTION 164' FNL & 2003' FWL

## DISTANCE & DIRECTION

FROM INT. OF NM-128 W & DELAWARE BASIN RD., GO WEST ON NM-128 W  
±3.3 MILES, THENCE SOUTH (LEFT) ON DIAMOND RD. ±2.5 MILES, THENCE  
SOUTHEAST (LEFT) ON C.R. 2 ±0.2 MILES, THENCE SOUTHEAST (RIGHT) AT  
VACA LN. ±1 MILE, THENCE WEST (RIGHT) ON LEASE RD. ±1.2 MILES TO A  
POINT 200 FEET SOUTHEAST OF THE LOCATION.

THIS EASEMENT/SERVITUDE LOCATION SHOWN HEREON HAS BEEN SURVEYED ON THE GROUND UNDER MY  
SUPERVISION AND PREPARED ACCORDING TO THE EVIDENCE FOUND AT THE TIME OF SURVEY, AND DATA  
PROVIDED BY EOG RESOURCES, INC. THIS CERTIFICATION IS MADE AND LIMITED TO THOSE PERSONS OR  
ENTITIES SHOWN ON THE FACE OF THIS PLAT AND IS NON-TRANSFERABLE. THIS SURVEY IS CERTIFIED FOR THIS  
TRANSACTION ONLY.

ALL BEARINGS, DISTANCES, AND COORDINATE VALUES CONTAINED HEREON ARE GRID BASED UPON THE NEW  
MEXICO STATE PLANE COORDINATE SYSTEM, EAST ZONE OF THE NORTH AMERICAN DATUM 1927, U.S. SURVEY  
FEET.



SCALE: 1" = 10000'  
0' 5000' 10000'

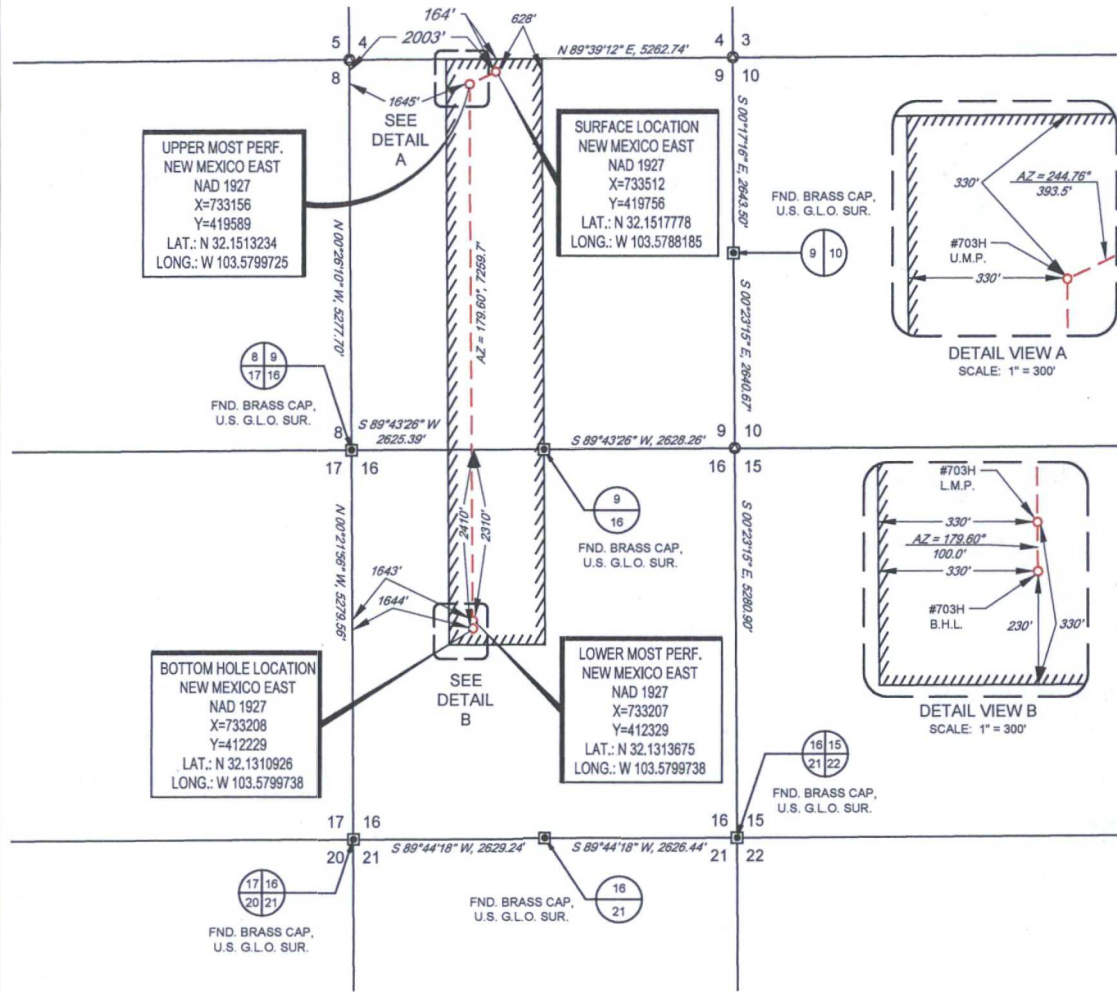


**TOPOGRAPHIC**  
LOYALTY INNOVATION LEGACY

1400 EVERMAN PARKWAY, Ste. 197 • FT. WORTH, TEXAS 76140  
TELEPHONE: (817) 744-7512 • FAX (817) 744-7548  
2903 NORTH BIG SPRING • MIDLAND, TEXAS 79705  
TELEPHONE: (432) 682-1653 OR (800) 767-1653 • FAX (432) 682-1743  
WWW.TOPOGRAPHIC.COM

**EXHIBIT 2A**

SECTION 9, TOWNSHIP 25-S, RANGE 33-E, N.M.P.M.  
LEA COUNTY, NEW MEXICO



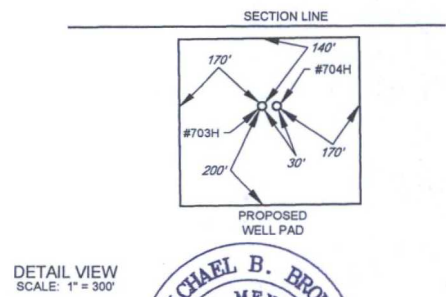
LEASE NAME & WELL NO.: ANTIETAM 9 FED COM #703H

SECTION 9 TWP 25-S RGE 33-E SURVEY N.M.P.M.  
COUNTY LEA STATE NM  
DESCRIPTION 164' FNL & 2003' FWL

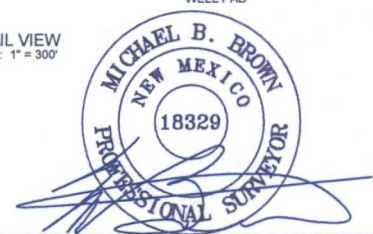
**DISTANCE & DIRECTION**  
FROM INT. OF NM-128 W & DELAWARE BASIN RD., GO WEST ON NM-128 W  
±3.3 MILES, THENCE SOUTH (LEFT) ON DIAMOND RD. ±2.5 MILES, THENCE  
SOUTHEAST (LEFT) ON C.R. 2 ±0.2 MILES, THENCE SOUTHEAST (RIGHT)  
AT VACA LN. ±1 MILE, THENCE WEST (RIGHT) ON LEASE RD. ±1.2 MILES TO  
A POINT 200 FEET SOUTHEAST OF THE LOCATION.

ALL BEARINGS, DISTANCES, AND COORDINATE VALUES CONTAINED HEREON ARE GRID  
BASED UPON THE NEW MEXICO STATE PLANE COORDINATE SYSTEM, EAST ZONE OF THE  
NORTH AMERICAN DATUM 1927, U.S. SURVEY FEET.

THIS EASEMENT/SERVITUDE LOCATION SHOWN HEREON HAS BEEN SURVEYED ON THE GROUND  
UNDER MY SUPERVISION AND PREPARED ACCORDING TO THE EVIDENCE FOUND AT THE TIME OF  
SURVEY, AND DATA PROVIDED BY EOG RESOURCES, INC. THIS CERTIFICATION IS MADE AND LIMITED  
TO THOSE PERSONS OR ENTITIES SHOWN ON THE FACE OF THIS PLAT AND IS NON-TRANSFERABLE.  
THIS SURVEY IS CERTIFIED FOR THIS TRANSACTION ONLY.



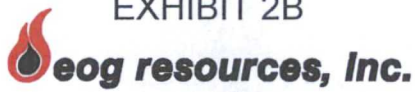
DETAIL VIEW  
SCALE: 1" = 300'



Michael Blake Brown, P.S. No. 18329  
JULY 19, 2016

**TOPOGRAPHIC**  
LOYALTY INNOVATION LEGACY  
1400 EVERMAN PARKWAY, Ste. 197 • FT. WORTH, TEXAS 76140  
TELEPHONE: (817) 744-7512 • FAX (817) 744-7548  
2903 NORTH BIG SPRING • MIDLAND, TEXAS 79705  
TELEPHONE: (432) 682-1653 OR (800) 767-1653 • FAX (432) 682-1743  
WWW.TOPOGRAPHIC.COM

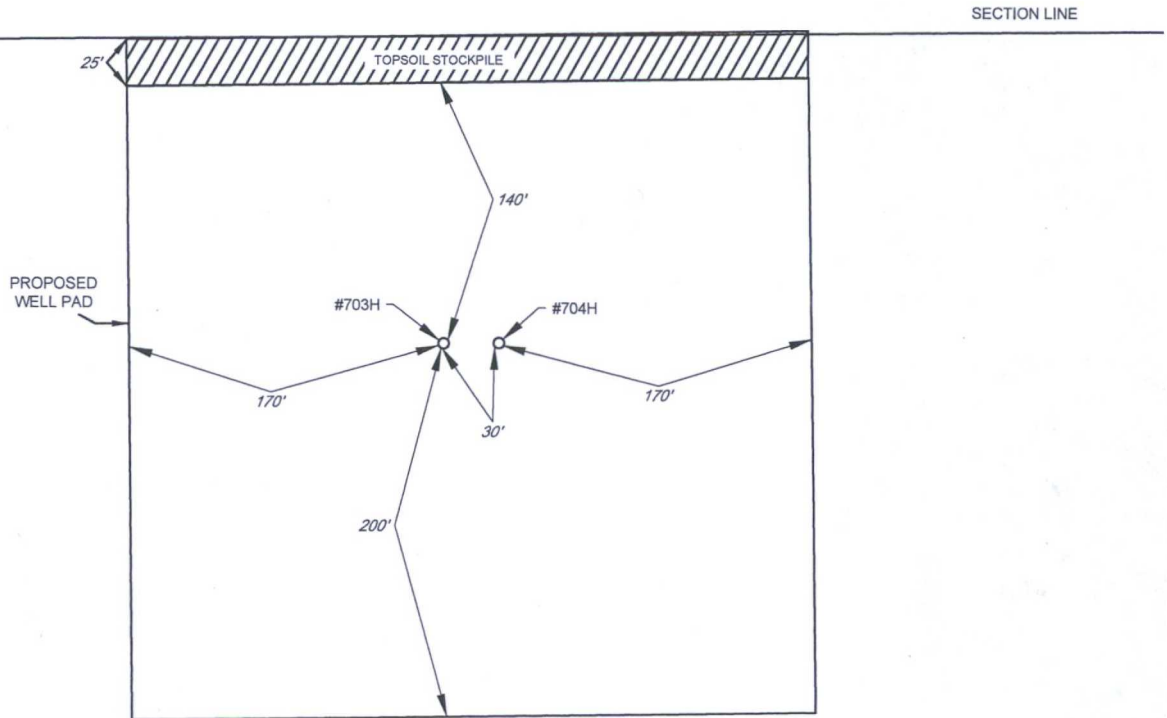




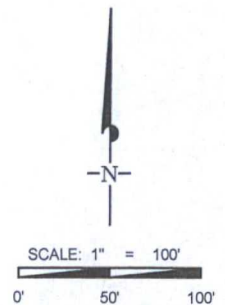
# EXHIBIT 2B

SECTION 9, TOWNSHIP 25-S, RANGE 33-E, N.M.P.M.  
LEA COUNTY, NEW MEXICO

DETAIL VIEW  
SCALE: 1" = 100'



LEASE NAME & WELL NO.: ANTIETAM 9 FED COM #703H  
#703H LATITUDE N 32.1517778 #703H LONGITUDE W 103.5788185



ALL BEARINGS, DISTANCES, AND COORDINATE VALUES CONTAINED HEREON ARE GRID  
BASED UPON THE NEW MEXICO STATE PLANE COORDINATE SYSTEM, EAST ZONE OF THE  
NORTH AMERICAN DATUM 1927, U.S. SURVEY FEET

THIS PROPOSED PAD SITE LOCATION SHOWN HEREON HAS BEEN SURVEYED ON THE GROUND UNDER  
MY SUPERVISION AND PREPARED ACCORDING TO THE EVIDENCE FOUND AT THE TIME OF SURVEY,  
AND DATA PROVIDED BY EOG RESOURCES, INC. THIS CERTIFICATION IS MADE AND LIMITED TO THOSE  
PERSONS OR ENTITIES SHOWN ON THE FACE OF THIS PLAT AND IS NON-TRANSFERABLE. THIS  
SURVEY IS CERTIFIED FOR THIS TRANSACTION ONLY.



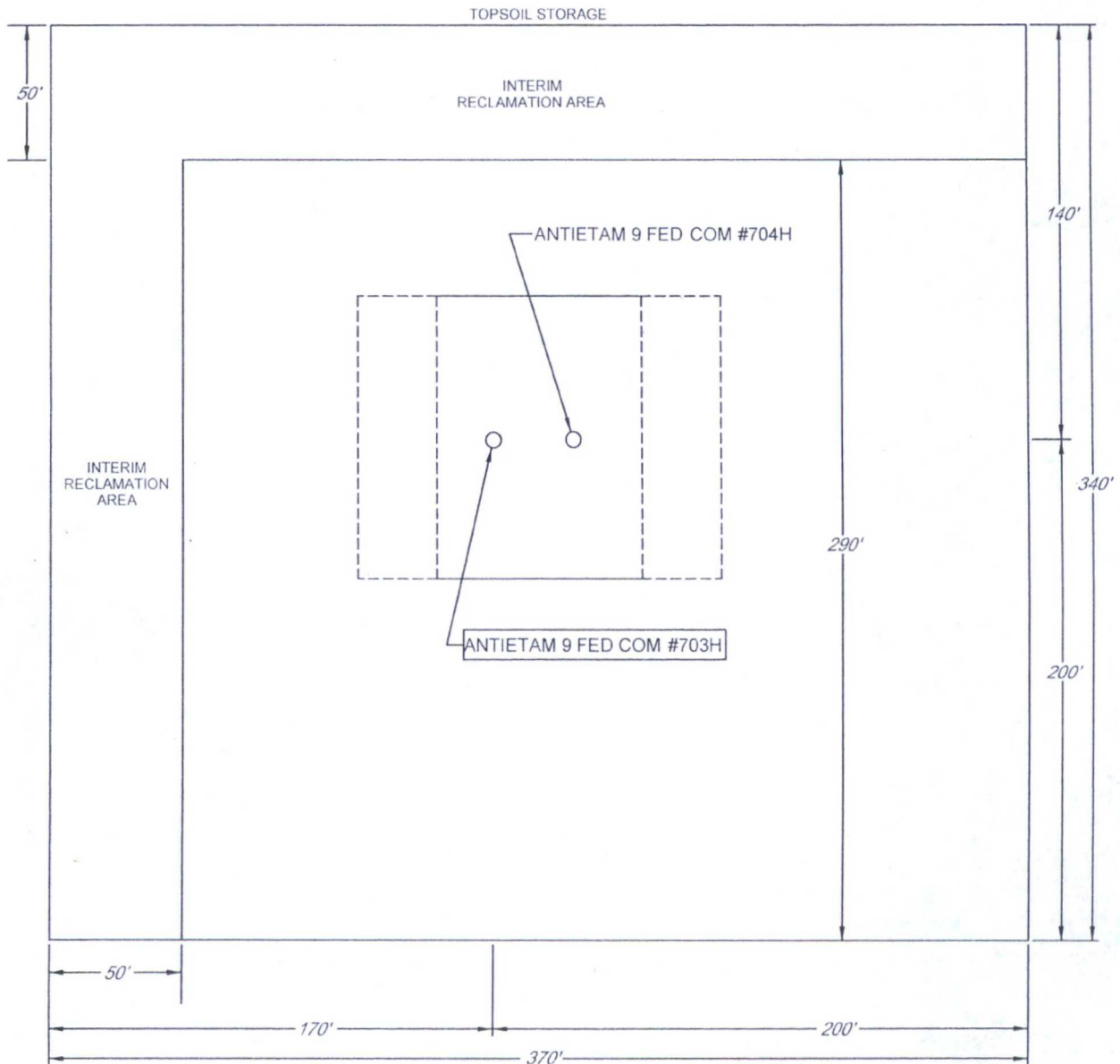
**TOPOGRAPHIC**  
LOYALTY INNOVATION LEGACY

1400 EVERMAN PARKWAY, Ste. 197 • FT. WORTH, TEXAS 76140  
TELEPHONE: (817) 744-7512 • FAX (817) 744-7548  
2903 NORTH BIG SPRING • MIDLAND, TEXAS 79705  
TELEPHONE: (432) 682-1653 OR (800) 767-1653 • FAX (432) 682-1743  
WWW.TOPOGRAPHIC.COM

EXHIBIT 2C  
RECLAMATION AND FACILITY DIAGRAM - PRODUCTION FACILITIES DIAGRAM

SECTION 9, TOWNSHIP 25-S, RANGE 33-E, N.M.P.M.  
LEA COUNTY, NEW MEXICO

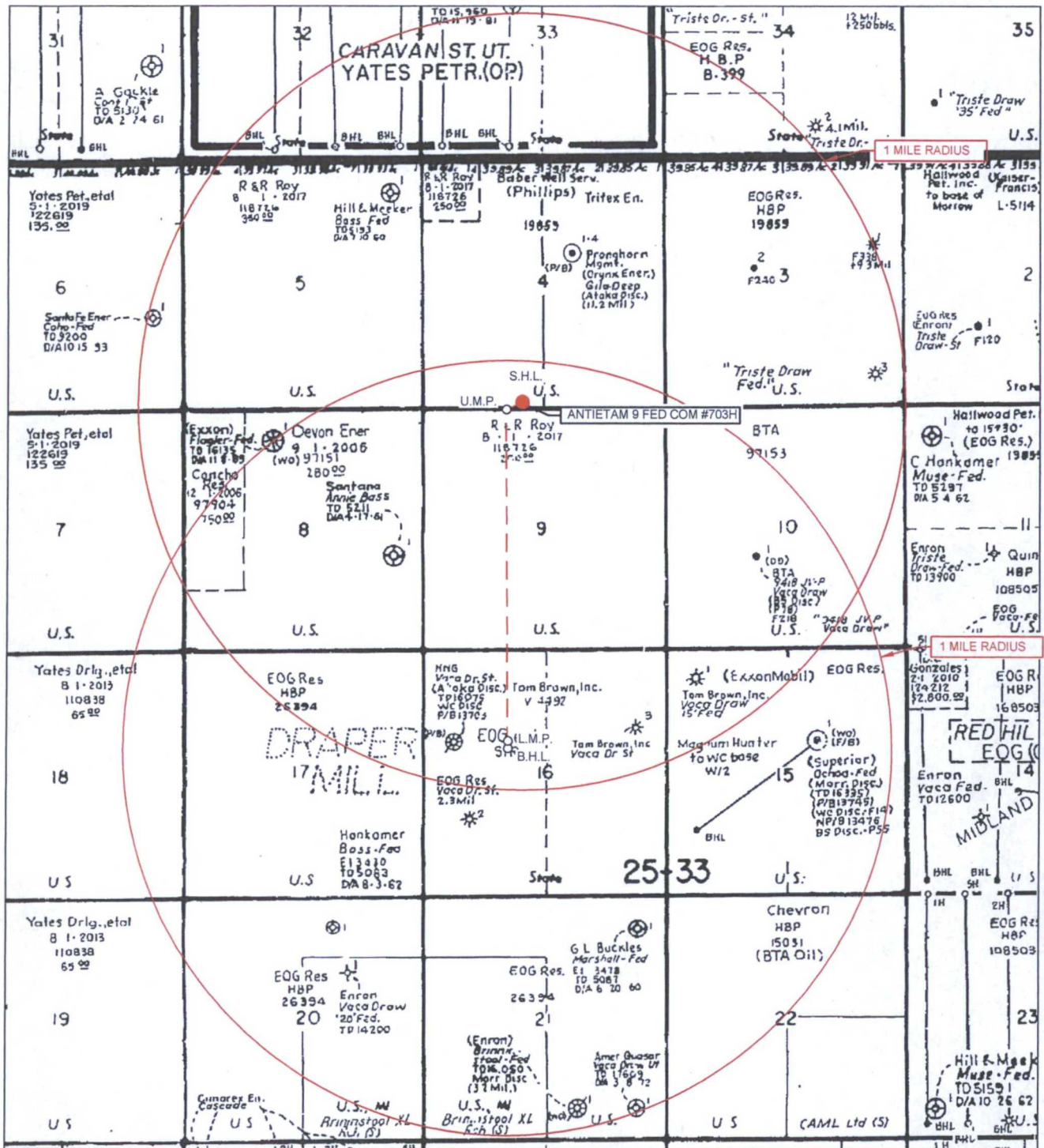
DETAIL VIEW  
SCALE 1" = 60'



LEASE NAME & WELL NO.: ANTIETAM 9 FED COM #703H  
#703H LATITUDE N 32.1517778 #703H LONGITUDE W 103.5788185

# EXHIBIT 3

SECTION 9, TOWNSHIP 25-S, RANGE 33-E, N.M.P.M.  
LEA COUNTY, NEW MEXICO



LEASE NAME & WELL NO.: ANTIETAM 9 FED COM #703H

SCALE: NTS

#703H LATITUDE N 32.1517778

#703H LONGITUDE W 103.5788185

ALL BEARINGS, DISTANCES, AND COORDINATE VALUES CONTAINED HEREON ARE GRID BASED UPON THE NEW MEXICO STATE PLANE COORDINATE SYSTEM, EAST ZONE OF THE NORTH AMERICAN DATUM 1927, U.S. SURVEY FEET

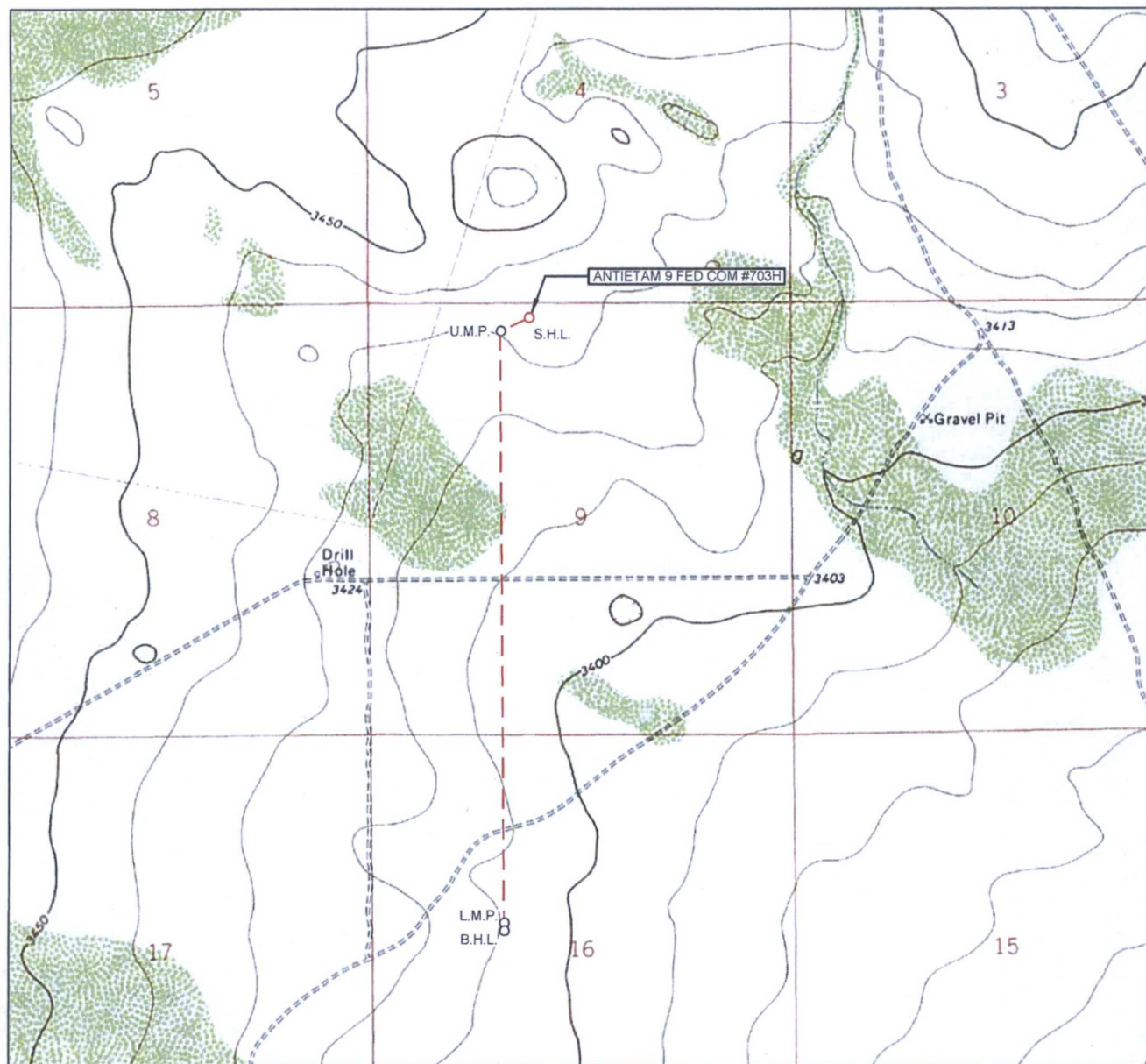
THIS EASEMENT/SERVITUDE LOCATION SHOWN HEREON HAS BEEN SURVEYED ON THE GROUND UNDER MY SUPERVISION AND PREPARED ACCORDING TO THE EVIDENCE FOUND AT THE TIME OF SURVEY, AND DATA PROVIDED BY EOG RESOURCES, INC. THIS CERTIFICATION IS MADE AND LIMITED TO THOSE PERSONS OR ENTITIES SHOWN ON THE FACE OF THIS PLAT AND IS NON-TRANSFERABLE. THIS SURVEY IS CERTIFIED FOR THIS TRANSACTION ONLY.



1400 EVERMAN PARKWAY, Ste. 197 • FT. WORTH, TEXAS 76140  
TELEPHONE: (817) 744-7512 • FAX (817) 744-7548  
2903 NORTH BIG SPRING • MIDLAND, TEXAS 79705  
TELEPHONE: (432) 682-1653 OR (800) 767-1653 • FAX (432) 682-1743  
WWW.TOPOGRAPHIC.COM



# LOCATION & ELEVATION VERIFICATION MAP



LEASE NAME & WELL NO.: ANTIETAM 9 FED COM #703H

SECTION 9 TWP 25-S RGE 33-E SURVEY N.M.P.M.  
 COUNTY LEA STATE NM ELEVATION 3440'  
 DESCRIPTION 164' FNL & 2003' FWL

LATITUDE N 32.1517778 LONGITUDE W 103.5788185



SCALE: 1" = 2000'  
 0' 1000' 2000'

THIS EASEMENT/SERVITUDE LOCATION SHOWN HEREON HAS BEEN SURVEYED ON THE GROUND UNDER MY SUPERVISION AND PREPARED ACCORDING TO THE EVIDENCE FOUND AT THE TIME OF SURVEY, AND DATA PROVIDED BY EOG RESOURCES, INC. THIS CERTIFICATION IS MADE AND LIMITED TO THOSE PERSONS OR ENTITIES SHOWN ON THE FACE OF THIS PLAT AND IS NON-TRANSFERABLE. THIS SURVEY IS CERTIFIED FOR THIS TRANSACTION ONLY.

ALL BEARINGS, DISTANCES, AND COORDINATE VALUES CONTAINED HEREON ARE GRID BASED UPON THE NEW MEXICO STATE PLANE COORDINATE SYSTEM, EAST ZONE OF THE NORTH AMERICAN DATUM 1927, U.S. SURVEY FEET.



**TOPOGRAPHIC**  
 LOYALTY INNOVATION LEGACY

1400 EVERMAN PARKWAY, Ste. 197 • FT. WORTH, TEXAS 76140

TELEPHONE: (817) 744-7512 • FAX (817) 744-7548

2903 NORTH BIG SPRING • MIDLAND, TEXAS 79705

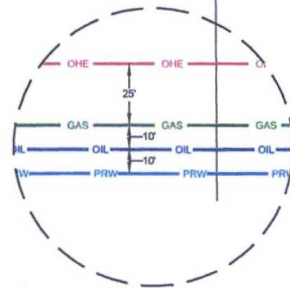
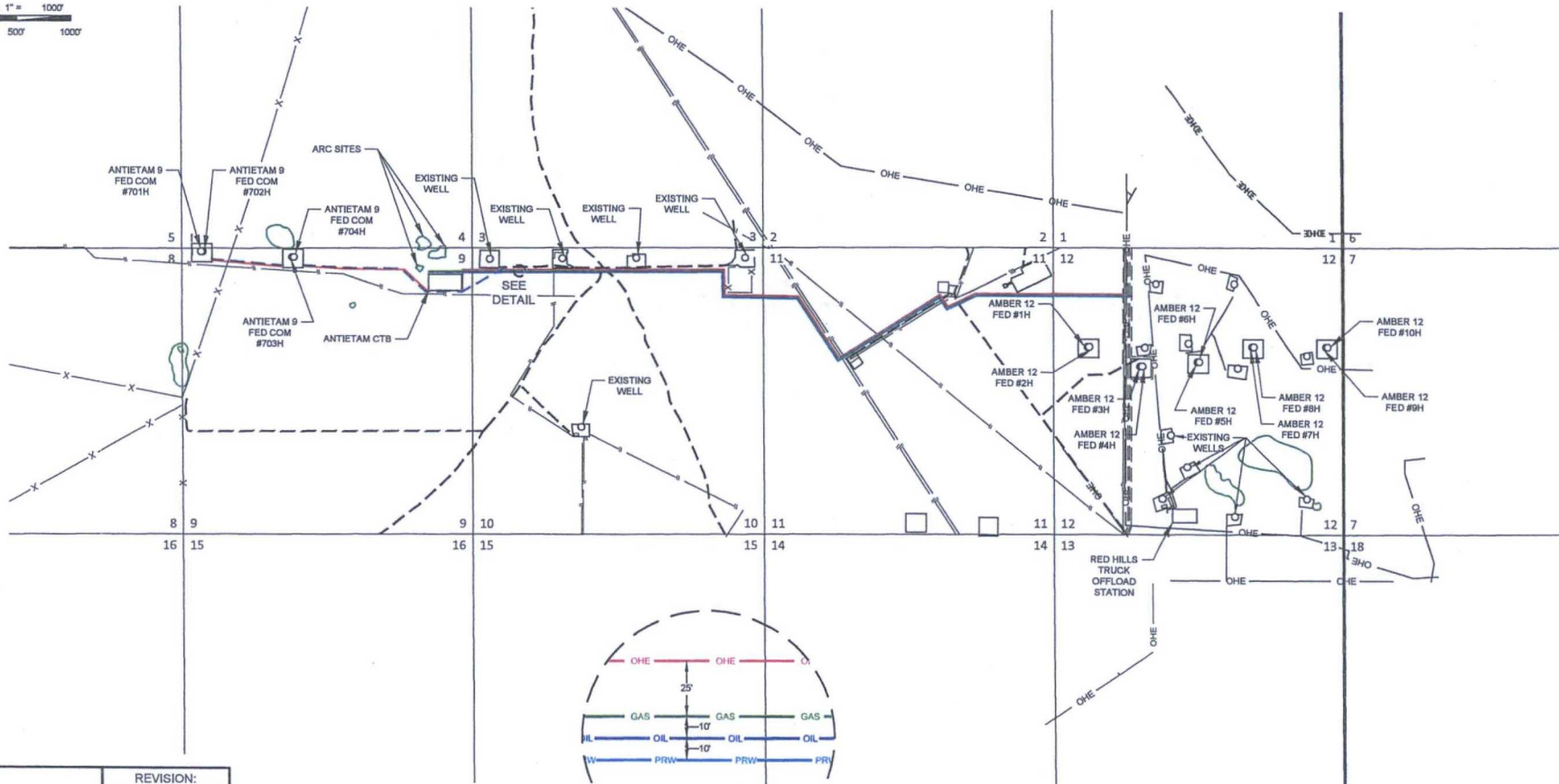
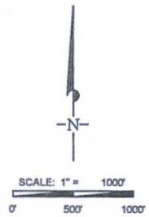
TELEPHONE: (432) 682-1653 OR (800) 767-1653 • FAX (432) 682-1743

WWW.TOPOGRAPHIC.COM

# EXHIBIT 5

SECTIONS 4,5,8,9,10,11 & 12, TOWNSHIP 25 SOUTH, RANGE 33 EAST, N.M.P.M.  
LEA COUNTY, NEW MEXICO

## ANTIETAM 9 FED COM CTB INFRASTRUCTURE

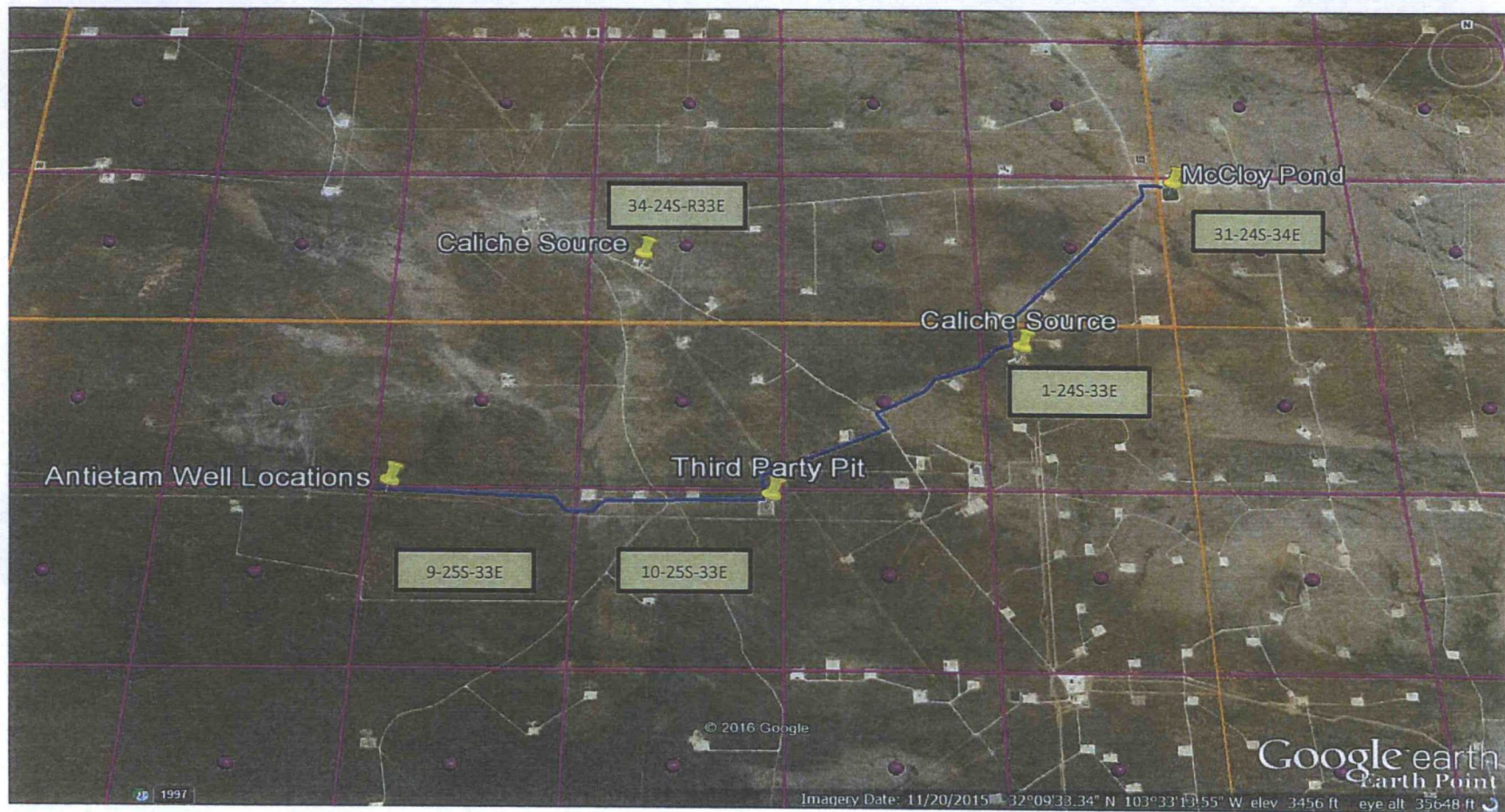


DETAIL VIEW  
SCALE: 1" = 50'

PRODUCED WATERLINE -TOTAL FOOTAGE- 14,348 FT -WORKING PRESSURE 75-125 PSI	ELECTRIC LINE -TOTAL FOOTAGE- 14,048 FT
OIL SALES LINE -TOTAL FOOTAGE- 14,376 FT -WORKING PRESSURE 75-125 PSI	GAS SALES LINE -TOTAL FOOTAGE- 14,314 FT -WORKING PRESSURE 75-125 PSI
4" FLEX STEEL FLOWLINE -TOTAL FOOTAGE- 3,708 FT -703H & #704H TO ANTIETAM CTB- 3,416 FT -#701H & #702H TO #703H & #704H- 1,390 FT	PROPOSED LEASE RD. -TOTAL FOOTAGE- 5,218 FT -LEASE RD. TO #703H & #704H- 3,928 FT -#703H & #704H TO #701H & #702H- 1,290 FT

	REVISION:	
	A.V.F.	04/06/2016
ANTIETAM 9 FED COM CTB INFRASTRUCTURE	G.L.H.	07/26/2016
DATE: 02/16/16		
FILE: \\S:\ANTIETAM\FEDCOM CTB INFRASTRUCTURE_REV		
DRAWN BY: GJU		
SHEET: 1 OF 1		





## Antietam Caliche & Water Source Map

Sec 9, T25S, R33E

Lea County, NM