

District I  
1625 N. French Dr., Hobbs, NM 88240  
Phone: (575) 393-6161 Fax: (575) 393-0720  
District II  
811 S. First St., Artesia, NM 88210  
Phone: (575) 748-1283 Fax: (575) 748-9720  
District III  
1000 Rio Brazos Road, Aztec, NM 87410  
Phone: (505) 334-6178 Fax: (505) 334-6170  
District IV  
1220 S. St. Francis Dr., Santa Fe, NM 87505  
Phone: (505) 476-3460 Fax: (505) 476-3462

State of New Mexico  
Energy, Minerals & Natural Resources Department  
OIL CONSERVATION DIVISION  
1220 South St. Francis Dr.  
Santa Fe, NM 87505

Form C-102  
Revised August 1, 2011  
Submit one copy to appropriate  
District Office  
☐ AMENDED REPORT

WELL LOCATION AND ACREAGE DEDICATION PLAT

<sup>1</sup> API Number 30-009-20027	<sup>2</sup> Pool Code 98216	<sup>3</sup> Pool Name WC-009 N063434G; CANYON (GAS)
<sup>4</sup> Property Code	<sup>5</sup> Property Name Frio Lands	<sup>6</sup> Well Number 1
<sup>7</sup> OGRID No. 270717	<sup>8</sup> Operator Name Sojourner Drilling Corp	<sup>9</sup> Elevation 4463

<sup>10</sup> Surface Location									
UL or lot no.	Section	Township	Range	Lot Idn	Feet from the	North/South line	Feet from the	East/West line	County
G	34	6 N	6 E		1929	North	1962	East	Curry

<sup>11</sup> Bottom Hole Location If Different From Surface									
UL or lot no.	Section	Township	Range	Lot Idn	Feet from the	North/South line	Feet from the	East/West line	County
<sup>12</sup> Dedicated Acres 160	<sup>13</sup> Joint or Infill	<sup>14</sup> Consolidation Code	<sup>15</sup> Order No.						

No allowable will be assigned to this completion until all interests have been consolidated or a non-standard unit has been approved by the division.

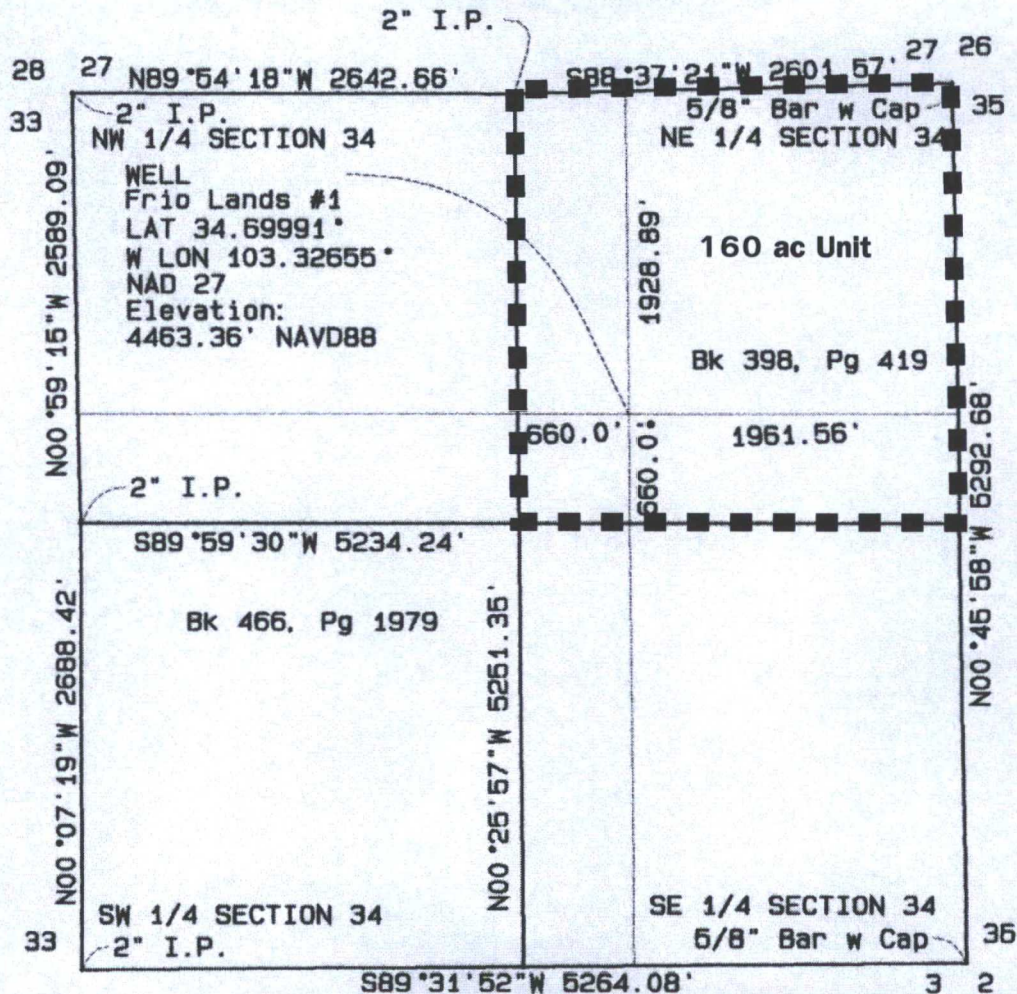
<sup>16</sup> 	<sup>17</sup> OPERATOR CERTIFICATION I hereby certify that the information contained herein is true and complete to the best of my knowledge and belief, and that this organization either owns a working interest or unleased mineral interest in the land including the proposed bottom hole location or has a right to drill this well at this location pursuant to a contract with an owner of such a mineral or working interest, or to a voluntary pooling agreement or a compulsory pooling order heretofore entered by the division.	
	Date 9-26-2016	
	Signature Avery Potts	
	Printed Name avery@sojodrilling.com E-mail Address	
See attached survey dated 6/27/16		<sup>18</sup> SURVEYOR CERTIFICATION I hereby certify that the well location shown on this plat was plotted from field notes of actual surveys made by me or under my supervision, and that the same is true and correct to the best of my belief.
		Date of Survey 6/27/2016
		Signature and Seal of Professional Surveyor: 
		Certificate Number

OPERATOR TO SUBMIT NEW  
C102 SIGNED BY OPERATOR



SECTION 34, TOWNSHIP 6 NORTH, RANGE 34 EAST, N.M.P.M.  
CURRY COUNTY, NEW MEXICO

OPERATOR: **SOJOURNER DRILLING CORP.**



Bearings and Coordinates conform to the New Mexico State Plane Coordinate System, East Zone, NAD83, (3001), as derived from static GPS data from NGS OPUS solution processing. To obtain surface values multiply distances by a combined factor of 0.99980376. Bearings are State Plane. Well Location is based on NAD27 coordinates.



Elliott Land Surveying  
www.elliotts surveying.net  
rusty@elliotts surveying.net  
PO Box 91366, Albuquerque, NM 87199  
505-280-6729

*Russell Elliott*

6/27/16

RUSSELL D. ELLIOTT, N.M.P.S. 13838, DATE