

District I  
1625 N. French Dr., Hobbs, NM 88240  
Phone: (575) 393-6161 Fax: (575) 393-0729  
District II  
811 S. First St., Artesia, NM 88210  
Phone: (575) 748-1283 Fax: (575) 748-9720  
District III  
1000 Rio Brazos Road, Aztec, NM 87410  
Phone: (505) 334-6178 Fax: (505) 334-6170  
District IV  
1220 S. St. Francis Dr., Santa Fe, NM 87505  
Phone: (505) 476-3460 Fax: (505) 476-3462

**HOBBS OCD**  
**DEC 05 2016**  
**RECEIVED**

State of New Mexico  
Energy, Minerals & Natural Resources Department  
OIL CONSERVATION DIVISION  
1220 South St. Francis Dr.  
Santa Fe, NM 87505

Form C-102  
Revised August 1, 2011  
Submit one copy to appropriate  
District Office

☐ AMENDED REPORT

WELL LOCATION AND ACREAGE DEDICATION PLAT

<sup>1</sup> API Number <b>30-025-43484</b>		<sup>2</sup> Pool Code <b>59900</b>	<sup>3</sup> Pool Name <b>Triple X; Bone Spring</b>
<sup>4</sup> Property Code <b>30884</b>	<sup>5</sup> Property Name <b>THISTLE UNIT</b>		<sup>6</sup> Well Number <b>130H</b>
<sup>7</sup> OGRID No. <b>6137</b>	<sup>8</sup> Operator Name <b>DEVON ENERGY PRODUCTION COMPANY, L.P.</b>		<sup>9</sup> Elevation <b>3630.8</b>

<sup>10</sup> Surface Location

UL or lot no.	Section	Township	Range	Lot Idn	Feet from the	North/South line	Feet from the	East/West line	County
<b>M</b>	<b>34</b>	<b>23 S</b>	<b>33 E</b>		<b>161</b>	<b>SOUTH</b>	<b>653</b>	<b>WEST</b>	<b>LEA</b>

<sup>11</sup> Bottom Hole Location If Different From Surface

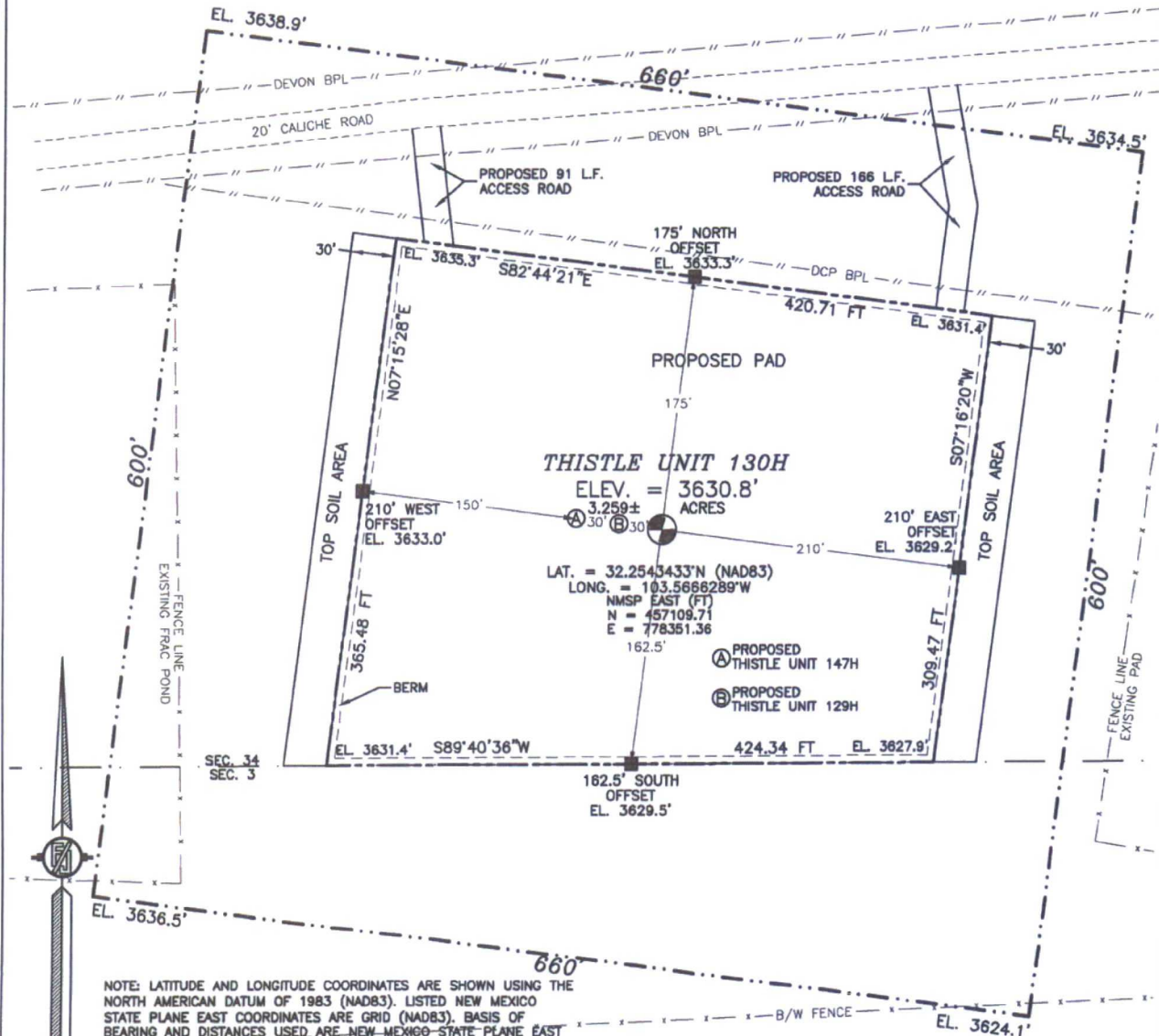
UL or lot no.	Section	Township	Range	Lot Idn	Feet from the	North/South line	Feet from the	East/West line	County
<b>K</b>	<b>27</b>	<b>23 S</b>	<b>33 E</b>		<b>2630</b>	<b>SOUTH</b>	<b>1340</b>	<b>WEST</b>	<b>LEA</b>

<sup>12</sup> Dedicated Acres	<sup>13</sup> Joint or Infill	<sup>14</sup> Consolidation Code	<sup>15</sup> Order No.

No allowable will be assigned to this completion until all interests have been consolidated or a non-standard unit has been approved by the division.

<p>NW CORNER SEC. 27 LAT. = 32.2829508°N LONG. = 103.5687577°W NMSP EAST (FT) N = 467512.36 E = 777619.12</p> <p>W/4 CORNER SEC. 27 LAT. = 32.2756899°N LONG. = 103.5687542°W NMSP EAST (FT) N = 464870.84 E = 777639.03</p> <p>SECTION CORNER LAT. = 32.2684420°N LONG. = 103.5687493°W NMSP EAST (FT) N = 462234.08 E = 777659.34</p> <p>W/4 CORNER SEC. 34 LAT. = 32.2611700°N LONG. = 103.5687420°W NMSP EAST (FT) N = 459588.56 E = 777680.44</p> <p>SW CORNER SEC. 34 LAT. = 32.2539037°N LONG. = 103.5687408°W NMSP EAST (FT) N = 456945.13 E = 777699.63</p>		<p>N/4 CORNER SEC. 27 LAT. = 32.2829394°N LONG. = 103.5602131°W NMSP EAST (FT) N = 467527.14 E = 780259.81</p> <p>BOTTOM OF HOLE LAT. = 32.2756631°N LONG. = 103.5644196°W NMSP EAST (FT) N = 464870.67 E = 778978.80</p> <p>SECTION CORNER LAT. = 32.2684152°N LONG. = 103.5516675°W NMSP EAST (FT) N = 462262.37 E = 782939.28</p> <p>E/4 CORNER SEC. 34 LAT. = 32.2538795°N LONG. = 103.5516653°W NMSP EAST (FT) N = 456974.34 E = 782978.47</p>		<p>NE CORNER SEC. 27 LAT. = 32.2829270°N LONG. = 103.5516698°W NMSP EAST (FT) N = 467541.76 E = 782900.10</p> <p>E/4 CORNER SEC. 27 LAT. = 32.2757053°N LONG. = 103.5516694°W NMSP EAST (FT) N = 464914.49 E = 782919.36</p>		<p><b>17 OPERATOR CERTIFICATION</b> I hereby certify that the information contained herein is true and complete to the best of my knowledge and belief, and that this organization either owns a working interest or unleased mineral interest in the land including the proposed bottom hole location or has a right to drill this well at this location pursuant to a contract with an owner of such a mineral or working interest, or to a voluntary pooling agreement or a compulsory pooling order heretofore entered by the division.  <i>Rebecca Deal</i> 1/30/2016 Signature Date <b>Rebecca Deal, Regulatory Analyst</b> Printed Name <b>rebecca.deal@dmn.com</b> E-mail Address</p>	
<p>NOTE: LATITUDE AND LONGITUDE COORDINATES ARE SHOWN USING THE NORTH AMERICAN DATUM OF 1983 (NAD83). LISTED NEW MEXICO STATE PLANE EAST COORDINATES ARE GRID (NAD83). BASIS OF BEARING AND DISTANCES USED ARE NEW MEXICO STATE PLANE EAST COORDINATES MODIFIED TO THE SURFACE. ELEVATION VALUES ARE NAVD 88.</p> <p>THISTLE UNIT 130H ELEV. = 3630.8' LAT. = 32.2543433°N (NAD83) LONG. = 103.5666289°W NMSP EAST (FT) N = 457109.71 E = 778351.36</p> <p>161' SURFACE LOCATION 653' S/4 CORNER SEC. 34 SCALED</p>		<p><b>18 SURVEYOR CERTIFICATION</b> I hereby certify that the well location shown on this plat was plotted from field notes of actual surveys made by me or under my supervision, and that the same is true and correct to the best of my belief.  JUNE 10, 2016 Date of Survey  Signature and Seal of Professional Surveyor: Certificate Number: FILIMON F. JARAMILLO, PLS 12797 SURVEY NO. 4709</p>					

SECTION 34, TOWNSHIP 23 SOUTH, RANGE 33 EAST, N.M.P.M.  
LEA COUNTY, STATE OF NEW MEXICO  
SITE MAP



NOTE: LATITUDE AND LONGITUDE COORDINATES ARE SHOWN USING THE NORTH AMERICAN DATUM OF 1983 (NAD83). LISTED NEW MEXICO STATE PLANE EAST COORDINATES ARE GRID (NAD83). BASIS OF BEARING AND DISTANCES USED ARE NEW MEXICO STATE PLANE EAST COORDINATES MODIFIED TO THE SURFACE. ELEVATION VALUES ARE NAVD 88.

011 55 110 220  
SCALE 1" = 110'

**DIRECTIONS TO LOCATION**

FROM STATE HWY. 129 AND CR. J2 (BRINSTOOL) GO NORTH ON J2 3.1 MILES, TURN RIGHT ON CALICHE ROAD AND GO EAST 0.2 MILE TO A PROPOSED ROAD SURVEY AND FOLLOW FLAGS SOUTH 91' TO THE NORTHWEST PAD CORNER FOR THIS LOCATION.

DEVON ENERGY PRODUCTION COMPANY, L.P.  
**THISTLE UNIT 130H**  
LOCATED 161 FT. FROM THE SOUTH LINE  
AND 653 FT. FROM THE WEST LINE OF  
SECTION 34, TOWNSHIP 23 SOUTH,  
RANGE 33 EAST, N.M.P.M.  
LEA COUNTY, STATE OF NEW MEXICO

JUNE 10, 2016

SURVEY NO. 4709

MADRON SURVEYING, INC. 301 SOUTH CANAL CARLSBAD, NEW MEXICO  
(575) 234-3341

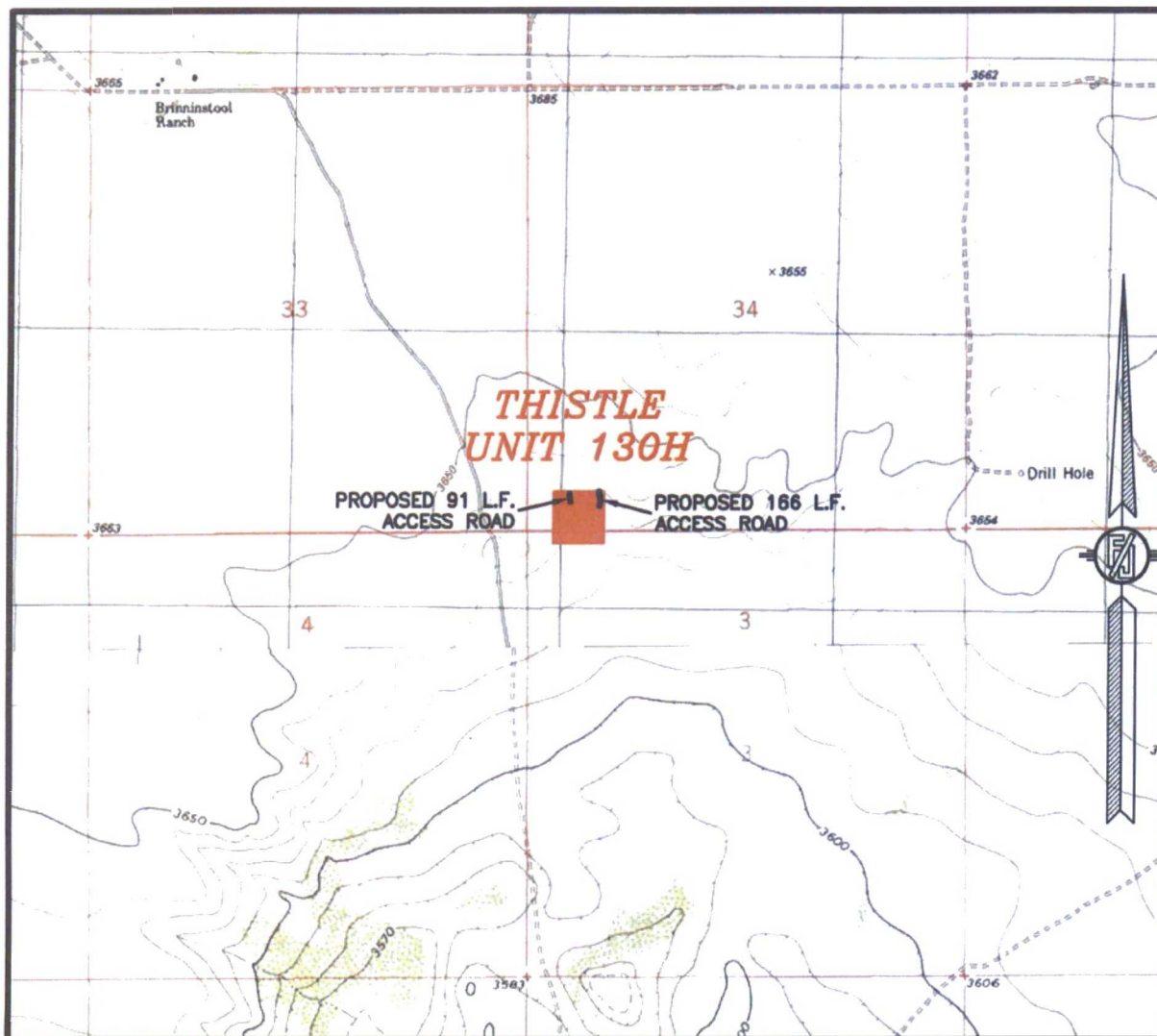


[illegible]

MADRON SURVEYING, INC. 301 SOUTH CANAL (575) 234-3341 CARLSBAD, NEW MEXICO

301 SOUTH CANAL  
(575) 234-3341

SECTION 34, TOWNSHIP 23 SOUTH, RANGE 33 EAST, N.M.P.M.  
LEA COUNTY, STATE OF NEW MEXICO  
LOCATION VERIFICATION MAP



USGS QUAD MAP:  
TIP TOP WELLS

NOT TO SCALE

DEVON ENERGY PRODUCTION COMPANY, L.P.  
**THISTLE UNIT 130H**

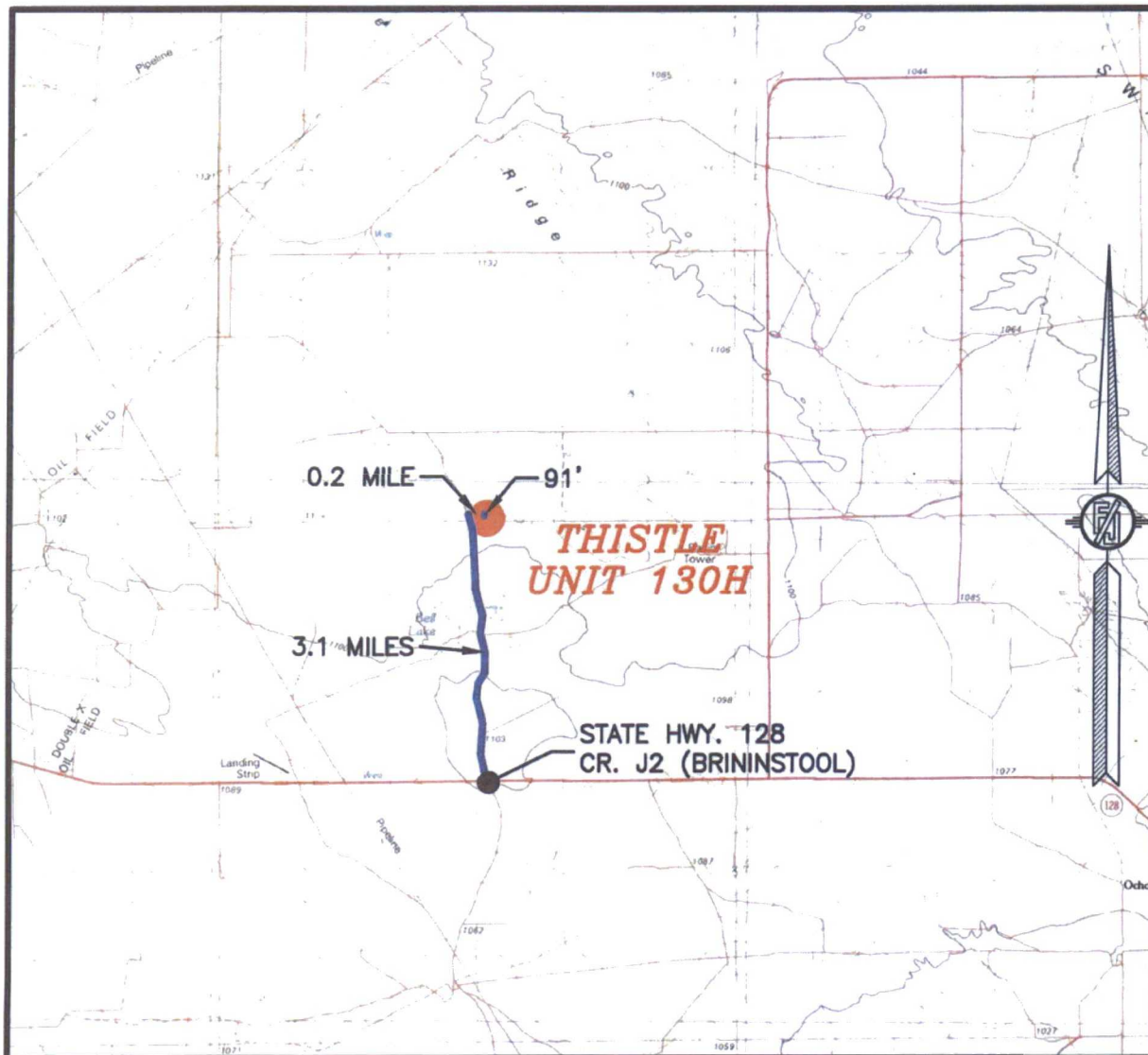
LOCATED 161 FT. FROM THE SOUTH LINE  
AND 653 FT. FROM THE WEST LINE OF  
SECTION 34, TOWNSHIP 23 SOUTH,  
RANGE 33 EAST, N.M.P.M.  
LEA COUNTY, STATE OF NEW MEXICO

JUNE 10, 2016

SURVEY NO. 4709

MADRON SURVEYING, INC. 301 SOUTH CANAL (575) 234-3341 CARLSBAD, NEW MEXICO

SECTION 34, TOWNSHIP 23 SOUTH, RANGE 33 EAST, N.M.P.M.  
LEA COUNTY, STATE OF NEW MEXICO  
VICINITY MAP



DISTANCES IN MILES

NOT TO SCALE

**DIRECTIONS TO LOCATION**

FROM STATE HWY. 129 AND CR. J2 (BRININSTOOL) GO NORTH ON J2 3.1 MILES, TURN RIGHT ON CALICHE ROAD AND GO EAST 0.2 MILE TO A PROPOSED ROAD SURVEY AND FOLLOW FLAGS SOUTH 91' TO THE NORTHWEST PAD CORNER FOR THIS LOCATION.

DEVON ENERGY PRODUCTION COMPANY, L.P.

**THISTLE UNIT 130H**

LOCATED 161 FT. FROM THE SOUTH LINE  
AND 653 FT. FROM THE WEST LINE OF  
SECTION 34, TOWNSHIP 23 SOUTH,  
RANGE 33 EAST, N.M.P.M.  
LEA COUNTY, STATE OF NEW MEXICO

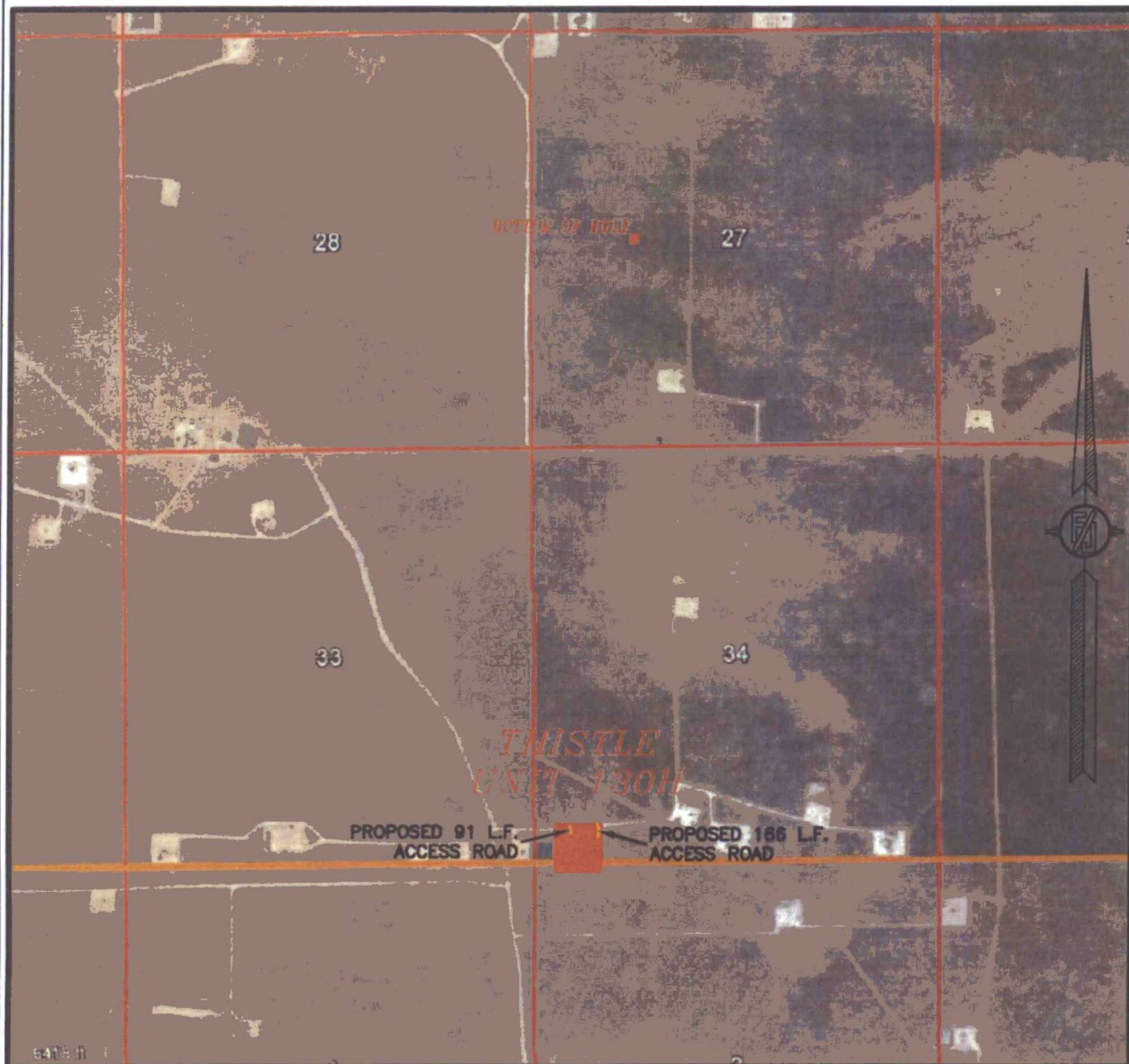
JUNE 10, 2016

SURVEY NO. 4709

MADRON SURVEYING, INC. 301 SOUTH CANAL (575) 234-3341 CARLSBAD, NEW MEXICO



SECTION 34, TOWNSHIP 23 SOUTH, RANGE 33 EAST, N.M.P.M.  
LEA COUNTY, STATE OF NEW MEXICO  
**AERIAL PHOTO**



NOT TO SCALE  
AERIAL PHOTO:  
GOOGLE EARTH  
FEB. 2014

**DEVON ENERGY PRODUCTION COMPANY, L.P.**  
**THISTLE UNIT 130H**

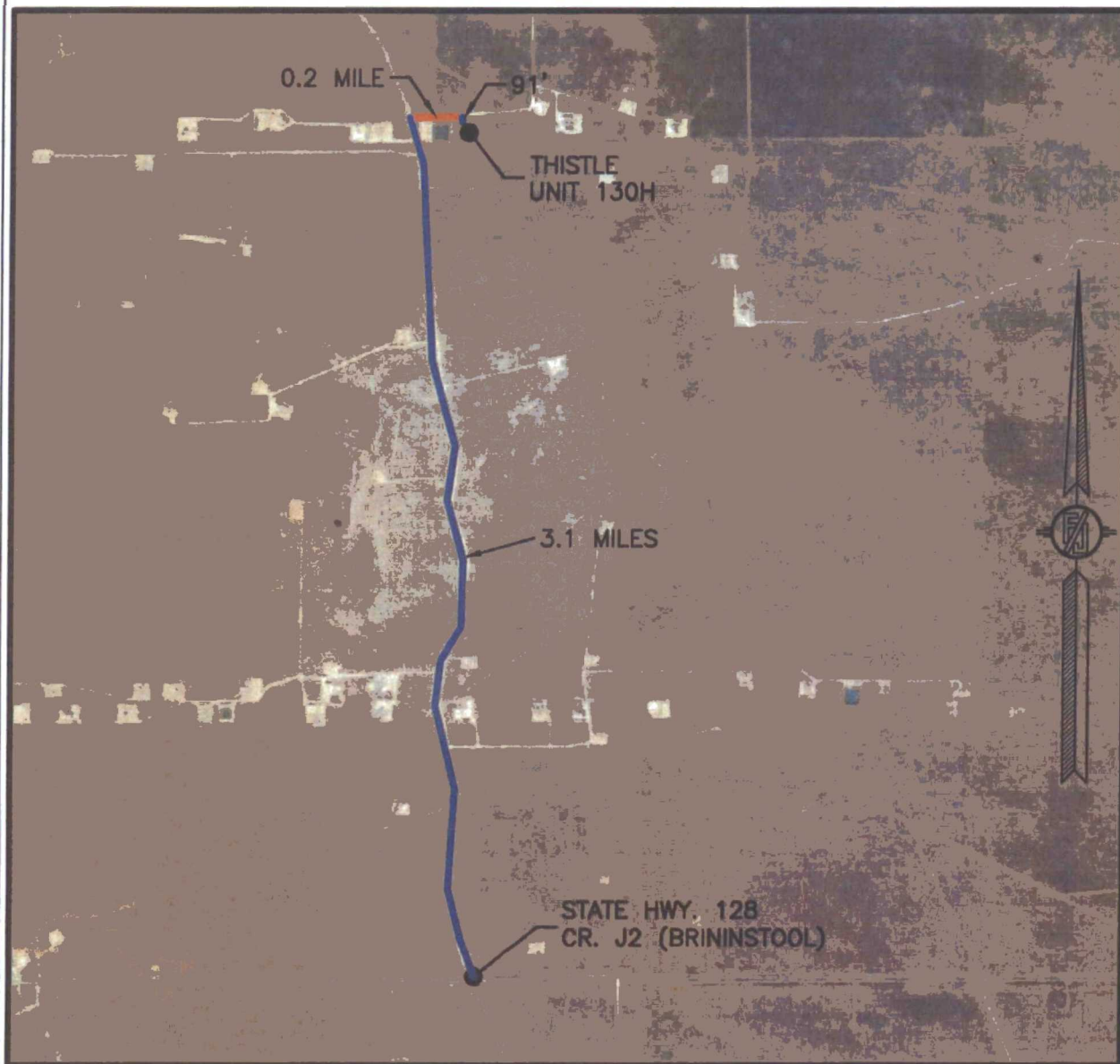
LOCATED 161 FT. FROM THE SOUTH LINE  
AND 653 FT. FROM THE WEST LINE OF  
SECTION 34, TOWNSHIP 23 SOUTH,  
RANGE 33 EAST, N.M.P.M.  
LEA COUNTY, STATE OF NEW MEXICO

JUNE 10, 2016

SURVEY NO. 4709

MADRON SURVEYING, INC. 301 SOUTH CANAL (575) 234-3341 CARLSBAD, NEW MEXICO

SECTION 34, TOWNSHIP 23 SOUTH, RANGE 33 EAST, N.M.P.M.  
LEA COUNTY, STATE OF NEW MEXICO  
**AERIAL ACCESS ROUTE MAP**



NOT TO SCALE  
AERIAL PHOTO:  
GOOGLE EARTH  
FEB. 2014

**DEVON ENERGY PRODUCTION COMPANY, L.P.**  
**THISTLE UNIT 130H**

LOCATED 161 FT. FROM THE SOUTH LINE  
AND 653 FT. FROM THE WEST LINE OF  
SECTION 34, TOWNSHIP 23 SOUTH,  
RANGE 33 EAST, N.M.P.M.  
LEA COUNTY, STATE OF NEW MEXICO

JUNE 10, 2016

SURVEY NO. 4709

MADRON SURVEYING, INC. 301 SOUTH CANAL (575) 234-3341 CARLSBAD, NEW MEXICO