

District I
1625 N. French Dr., Hobbs, NM 88240
Phone: (575) 393-6161 Fax: (575) 393-0720
District II
811 S. First St., Artesia, NM 88210
Phone: (575) 748-1283 Fax: (575) 748-9720
District III
1000 Rio Brazos Road, Aztec, NM 87410
Phone: (505) 334-6178 Fax: (505) 334-6179
District IV
1220 S. St. Francis Dr., Santa Fe, NM 87505
Phone: (505) 476-3460 Fax: (505) 476-3462

HOBBS OCD

DEC 05 2016

RECEIVED

State of New Mexico
Energy, Minerals & Natural Resources Department
OIL CONSERVATION DIVISION
1220 South St. Francis Dr.
Santa Fe, NM 87505

Form C-102
Revised August 1, 2011
Submit one copy to appropriate
District Office

☐ AMENDED REPORT

WELL LOCATION AND ACREAGE DEDICATION PLAT

¹ API Number 30-025-13485	² Pool Code 59900	³ Pool Name Triple X; Bone Spring
⁴ Property Code 30884	⁵ Property Name THISTLE UNIT	⁶ Well Number 131H
⁷ OGRID No. 6137	⁸ Operator Name DEVON ENERGY PRODUCTION COMPANY, L.P.	⁹ Elevation 3649.8

¹⁰ Surface Location

UL or lot no.	Section	Township	Range	Lot Idn	Feet from the	North/South line	Feet from the	East/West line	County
N	34	23 S	33 E		574	SOUTH	2182	WEST	LEA

¹¹ Bottom Hole Location If Different From Surface

UL or lot no.	Section	Township	Range	Lot Idn	Feet from the	North/South line	Feet from the	East/West line	County
K	27	23 S	33 E		2630	SOUTH	2230	WEST	LEA

¹² Dedicated Acres 240	¹³ Joint or Infill	¹⁴ Consolidation Code	¹⁵ Order No.
---	-------------------------------	----------------------------------	-------------------------

No allowable will be assigned to this completion until all interests have been consolidated or a non-standard unit has been approved by the division.

		<p>¹⁷ OPERATOR CERTIFICATION</p> <p>I hereby certify that the information contained herein is true and complete to the best of my knowledge and belief, and that this organization either owns a working interest or unleased mineral interest in the land including the proposed bottom hole location or has a right to drill this well at this location pursuant to a contract with an owner of such a mineral or working interest, or to a voluntary pooling agreement or a compulsory pooling order heretofore entered by the division.</p> <p><i>Rebecca Deal</i> 12/1/2016 Signature Date</p> <p>Rebecca Deal, Regulatory Analyst Printed Name</p> <p>rebecca.deal@dvn.com E-mail Address</p>
<p>¹⁸ SURVEYOR CERTIFICATION</p> <p>I hereby certify that the well location shown on this plat was plotted from field notes of actual surveys made by me or under my supervision, and that the same is true and correct to the best of my belief.</p> <p>JUNE 14, 2016 Date of Survey</p> <p><i>Filmon F. Jaramillo</i> Signature and Seal of Professional Surveyor</p> <p>Certificate Number: FILMON F. JARAMILLO, PLS 12797 SURVEY NO. 4710</p>		

NOTE: LATITUDE AND LONGITUDE COORDINATES ARE SHOWN USING THE NORTH AMERICAN DATUM OF 1983 (NAD83) LISTED NEW MEXICO STATE PLANE EAST COORDINATES ARE GRID (NAD83), BASIS OF BEARING AND DISTANCES USED ARE NEW MEXICO STATE PLANE EAST COORDINATES MODIFIED TO THE SURFACE. VERTICAL DATUM NAVD88.



FROM STATE HIGHWAY 128 AND CR J2 (BRININSTOOL) GO NORTH ON CR J2 3.1 MILES, TURN RIGHT ON CALICHE ROAD AND GO EAST 0.44 OF A MILE, BEND LEFT AND GO NORTH 0.1 OF A MILE, BEND RIGHT AND GO SOUTHEAST 517' TO A PROPOSED ROAD SURVEY AND FOLLOW FLAGS SOUTH 71' TO THE NORTHEAST PAD CORNER FOR THIS LOCATION.

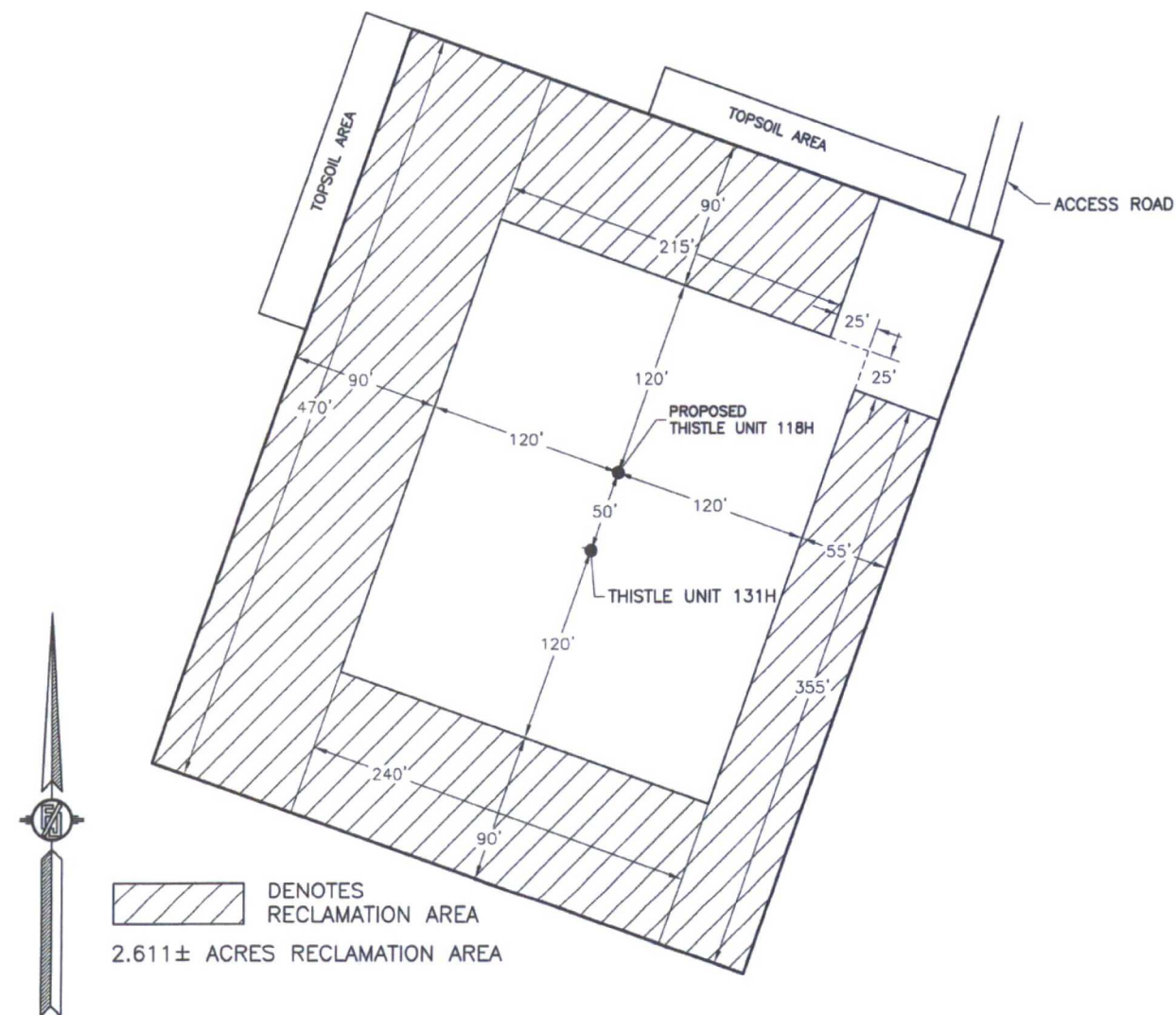
LOCATED 574 FT. FROM THE SOUTH LINE
AND 2182 FT. FROM THE WEST LINE OF
SECTION 34, TOWNSHIP 23 SOUTH,
RANGE 33 EAST, N.M.P.M.
LEA COUNTY, STATE OF NEW MEXICO

SURVEY NO. 4710.

MADRON SURVEYING, INC. 301 SOUTH CANAL CARLSBAD, NEW MEXICO
(575) 234-3341

301 SOUTH CANAL
(575) 234-3341

**PROPOSED INTERIM SITE RECLAMATION
FOR THISTLE UNIT 131H**
SECTION 34, TOWNSHIP 23 SOUTH, RANGE 33 EAST, N.M.P.M.
LEA COUNTY, STATE OF NEW MEXICO



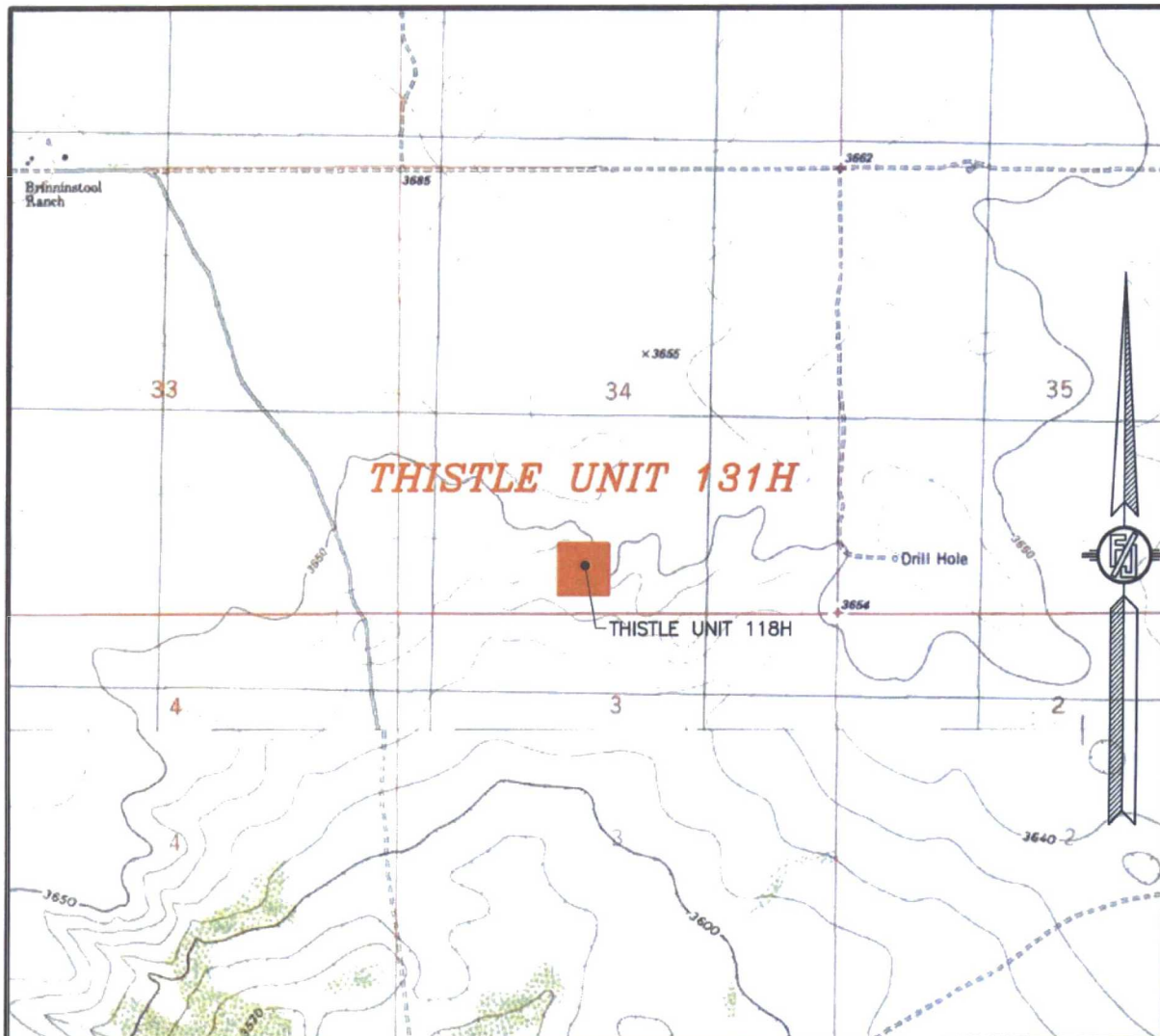
DEVON ENERGY PRODUCTION COMPANY, L.P.
THISTLE UNIT 131H
LOCATED 574 FT. FROM THE SOUTH LINE
AND 2182 FT. FROM THE WEST LINE OF
SECTION 34, TOWNSHIP 23 SOUTH,
RANGE 33 EAST, N.M.P.M.
LEA COUNTY, STATE OF NEW MEXICO

JUNE 14, 2016

SURVEY NO. 4710

MADRON SURVEYING, INC. 301 SOUTH CANAL (575) 234-3341 CARLSBAD, NEW MEXICO

SECTION 34, TOWNSHIP 23 SOUTH, RANGE 33 EAST, N.M.P.M.
LEA COUNTY, STATE OF NEW MEXICO
LOCATION VERIFICATION MAP



USGS QUAD MAP:
TIP TOP WELLS

NOT TO SCALE

DEVON ENERGY PRODUCTION COMPANY, L.P.
THISTLE UNIT 131H

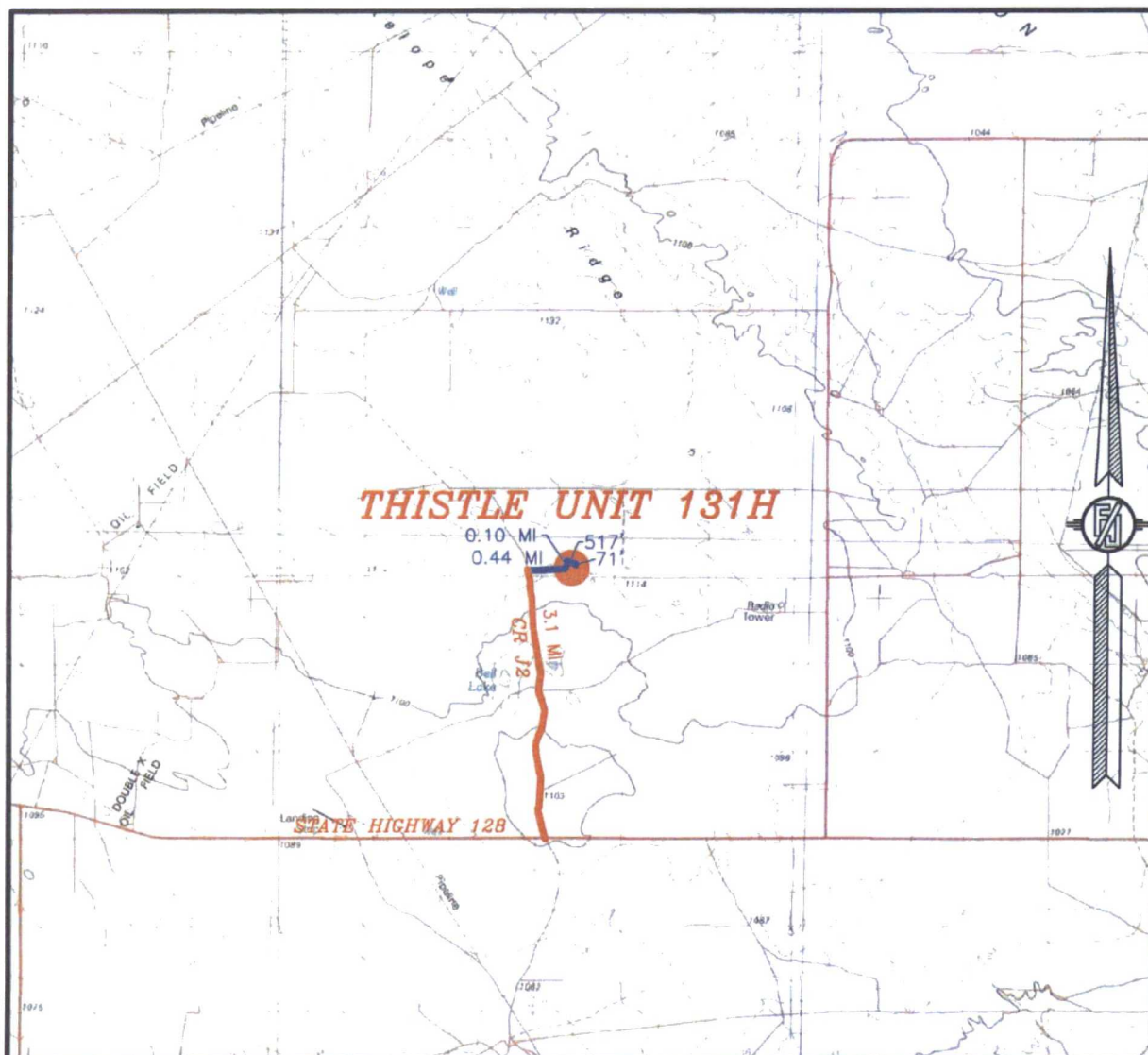
LOCATED 574 FT. FROM THE SOUTH LINE
AND 2182 FT. FROM THE WEST LINE OF
SECTION 34, TOWNSHIP 23 SOUTH,
RANGE 33 EAST, N.M.P.M.
LEA COUNTY, STATE OF NEW MEXICO

JUNE 14, 2016

MADRON SURVEYING, INC. 301 SOUTH CANAL (575) 234-3341 CARLSBAD, NEW MEXICO

SURVEY NO. 4710

SECTION 34, TOWNSHIP 23 SOUTH, RANGE 33 EAST, N.M.P.M.
LEA COUNTY, STATE OF NEW MEXICO
VICINITY MAP



DISTANCES IN MILES

NOT TO SCALE

DEVON ENERGY PRODUCTION COMPANY, L.P.
THISTLE UNIT 131H

LOCATED 574 FT. FROM THE SOUTH LINE
AND 2182 FT. FROM THE WEST LINE OF
SECTION 34, TOWNSHIP 23 SOUTH,
RANGE 33 EAST, N.M.P.M.
LEA COUNTY, STATE OF NEW MEXICO

DIRECTIONS TO LOCATION

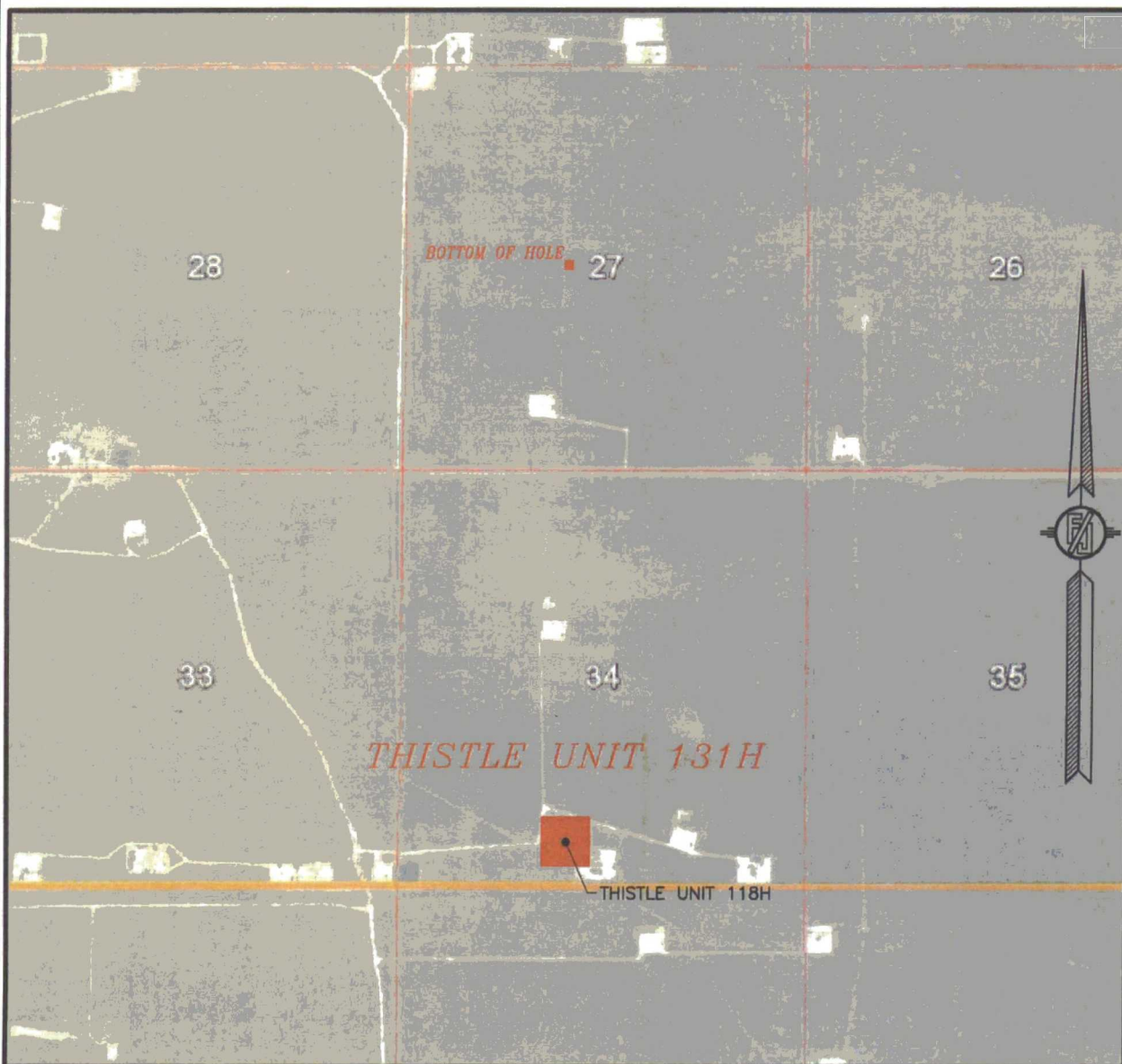
FROM STATE HIGHWAY 128 AND CR J2 (BRINNSTOOL) GO NORTH ON CR J2 3.1 MILES, TURN RIGHT ON CALICHE ROAD AND GO EAST 0.44 OF A MILE, BEND LEFT AND GO NORTH 0.1 OF A MILE, BEND RIGHT AND GO SOUTHEAST 517' TO A PROPOSED ROAD SURVEY AND FOLLOW FLAGS SOUTH 71' TO THE NORTHEAST PAD CORNER FOR THIS LOCATION.

JUNE 14, 2016

MADRON SURVEYING, INC. 301 SOUTH CANAL (575) 234-3341 CARLSBAD, NEW MEXICO

SURVEY NO. 4710

SECTION 34, TOWNSHIP 23 SOUTH, RANGE 33 EAST, N.M.P.M.
LEA COUNTY, STATE OF NEW MEXICO
AERIAL PHOTO



NOT TO SCALE
AERIAL PHOTO:
GOOGLE EARTH
FEBRUARY 2014

DEVON ENERGY PRODUCTION COMPANY, L.P.

THISTLE UNIT 131H

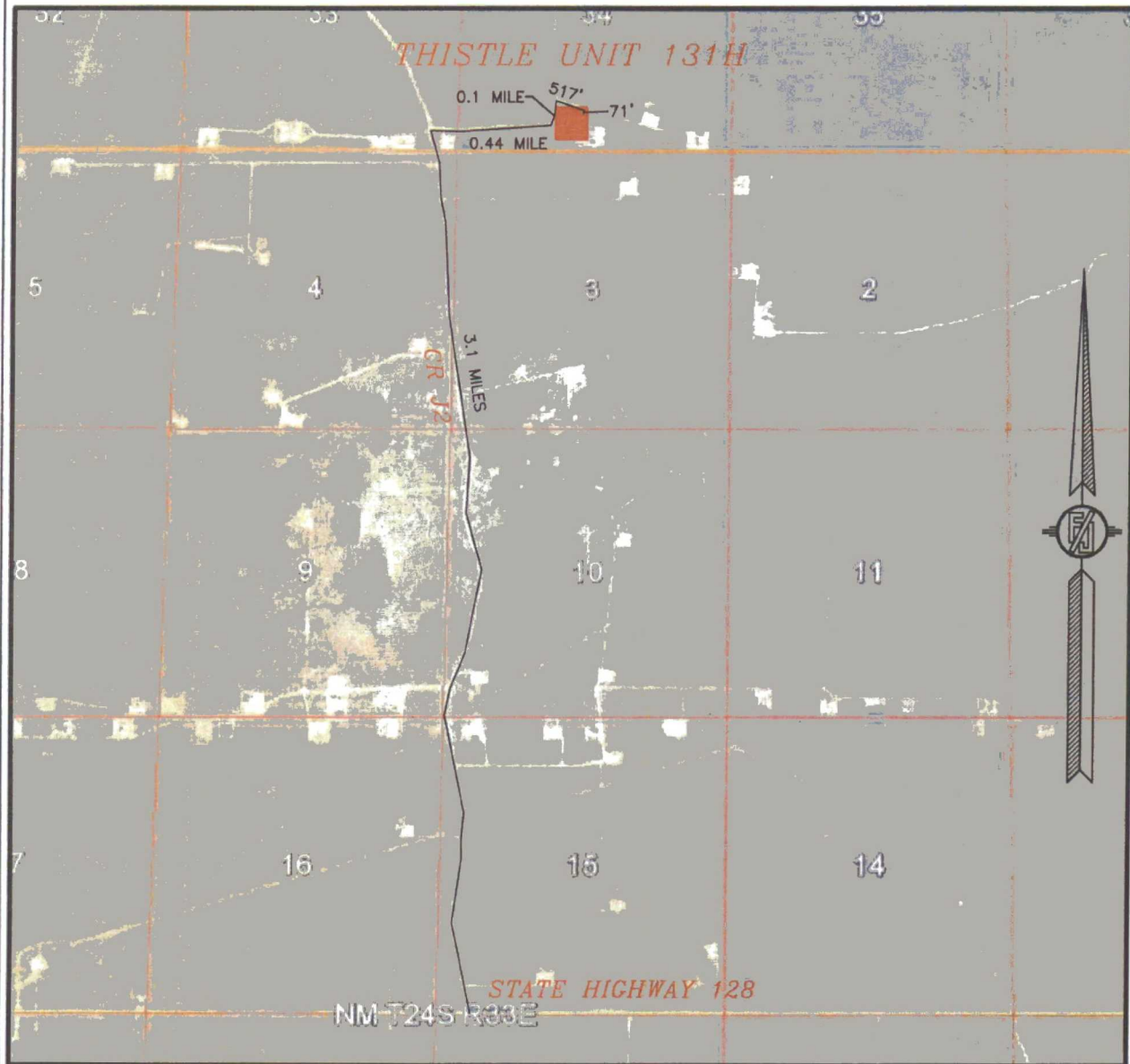
LOCATED 574 FT. FROM THE SOUTH LINE
AND 2182 FT. FROM THE WEST LINE OF
SECTION 34, TOWNSHIP 23 SOUTH,
RANGE 33 EAST, N.M.P.M.
LEA COUNTY, STATE OF NEW MEXICO

JUNE 14, 2016

SURVEY NO. 4710

MADRON SURVEYING, INC. 301 SOUTH CANAL (575) 234-3341 CARLSBAD, NEW MEXICO

SECTION 34, TOWNSHIP 23 SOUTH, RANGE 33 EAST, N.M.P.M.
LEA COUNTY, STATE OF NEW MEXICO
ACCESS AERIAL ROUTE MAP



NOT TO SCALE
AERIAL PHOTO:
GOOGLE EARTH
FEBRUARY 2014

DEVON ENERGY PRODUCTION COMPANY, L.P.

THISTLE UNIT 131H

LOCATED 574 FT. FROM THE SOUTH LINE
AND 2182 FT. FROM THE WEST LINE OF
SECTION 34, TOWNSHIP 23 SOUTH,
RANGE 33 EAST, N.M.P.M.
LEA COUNTY, STATE OF NEW MEXICO

JUNE 14, 2016

SURVEY NO. 4710

MADRON SURVEYING, INC. 301 SOUTH CANAL CARLSBAD, NEW MEXICO
(575) 234-3341