

District I - (575) 393-6161
1625 N. French Dr., Hobbs, NM 88240
District II - (575) 748-1283
811 S. First St., Artesia, NM 88210
District III - (505) 334-6178
1000 Rio Brazos Rd., Aztec, NM 87410
District IV - (505) 476-3460
1220 S. St. Francis Dr., Santa Fe, NM 87505

DEC 15 2016

RECEIVED

CONSERVATION DIVISION
1220 South St. Francis Dr.
Santa Fe, NM 87505

WELL API NO. 30-025-29192
5. Indicate Type of Lease STATE <input checked="" type="checkbox"/> FEE <input type="checkbox"/>
6. State Oil & Gas Lease No. E 754
7. Lease Name or Unit Agreement Name NORTH VACUUM ABO NORTH UNIT
8. Well Number #3 INJ
9. OGRID Number 277558
10. Pool name or Wildcat North Vacuum Abo (61760)
11. Elevation (Show whether DR, RKB, RT, GR, etc.) 4045' GL

SUNDRY NOTICES AND REPORTS ON WELLS
(DO NOT USE THIS FORM FOR PROPOSALS TO DRILL OR TO DEEPEN OR PLUG BACK TO A DIFFERENT RESERVOIR. USE "APPLICATION FOR PERMIT" (FORM C-101) FOR SUCH PROPOSALS.)

1. Type of Well: Oil Well ☐ Gas Well ☐ Other INJECTION WELL

2. Name of Operator
LIME ROCK RESOURCES II-A, L.P.

3. Address of Operator
c/o Mike Pippin LLC, 3104 N. Sullivan, Farmington, NM 87401

4. Well Location
Unit Letter O : 460 feet from the South line and 1680 feet from the East line
Section 2 Township 17-S Range 34-E NMPM Lea County

12. Check Appropriate Box to Indicate Nature of Notice, Report or Other Data

NOTICE OF INTENTION TO:

PERFORM REMEDIAL WORK ☐ PLUG AND ABANDON ☒
TEMPORARILY ABANDON ☐ CHANGE PLANS ☐
PULL OR ALTER CASING ☐ MULTIPLE COMPL ☐
DOWNHOLE COMMINGLE ☐
CLOSED-LOOP SYSTEM ☒
OTHER: ☐ P&A ☒

SUBSEQUENT

REMEDIAL WORK [INT TO PA PM
COMMENCE DRILLING OPNS. [P&A NR
CASING/CEMENT JOB [P&A R

OTHER:

13. Describe proposed or completed operations. (Clearly state all pertinent details, and give pertinent dates, including estimated date of starting any proposed work).
SEE RULE 19.15.7.14 NMAC. For Multiple Completions: Attach wellbore diagram of proposed completion or recompletion.

LIME ROCK would like to P&A this North Vacuum Abo well as follows: MIRUSU. Drill cmt & CIBP @ 5820' & CO to 8492'.
PLUG #1: 8492'-7950'. Abo perfs @ 8542'-8642' & top Abo @ 8000'. Set a 4-1/2" CIBP @ 8492' & top w/40 sx (542') cmt. Load csg w/water & circ clean. Pressure test csg to 300 psi. If csg does not test, spot or tag subsequent plugs as appropriate. Circ hole w/P&A mud (25 sx gel/100 bbls water). **PLUG #2 (6190'-5200'), Top Glorieta @ 6140' & Small Csg Leaks @ ~5300'-5700'.** Spot a balanced plug 6190'-5200' w/73 sx cmt (990'). WOC Tag cmt. **Plug #3 (4954'-2990'), 7" csg shoe @ 4904' & salt @ 3040'.** Spot a balanced plug 4954'-2990' w/145 sx cmt (1964'). WOC. Tag cmt. **Plug #4 (1850'-surface), Salt @ 1800' & 12-3/4" csg shoe @ 435'.** Perf 3 SQ holes @ 1850'. Establish rate down 4-1/2" csg & out annulus. Pump cmt down 4-1/2" csg & out 4-1/2" annulus. (~307 sx cmt). Cut off csg below surface csg flange. Top off csgs w/cmt. Install P&A marker with cmt to comply with government specs. RD move off location, cut off anchors and restore location.

Verify cement to surface all strings

NOTIFY OCD 24 HOURS PRIOR TO
BEGINNING PLUGGING OPERATIONS

Spud Date: 3/26/85

I hereby certify that the information above is true and complete to the best of my knowledge and belief.

SIGNATURE Mike Pippin TITLE Petroleum Engineer - Agent DATE 12/14/16
Type or print name Mike Pippin E-mail address: mike@pippinllc.com PHONE: 505-327-4573
For State Use Only

APPROVED BY: Mark Whitman TITLE Petroleum Engr. Specialist DATE 12/15/2016
Conditions of Approval (if any):

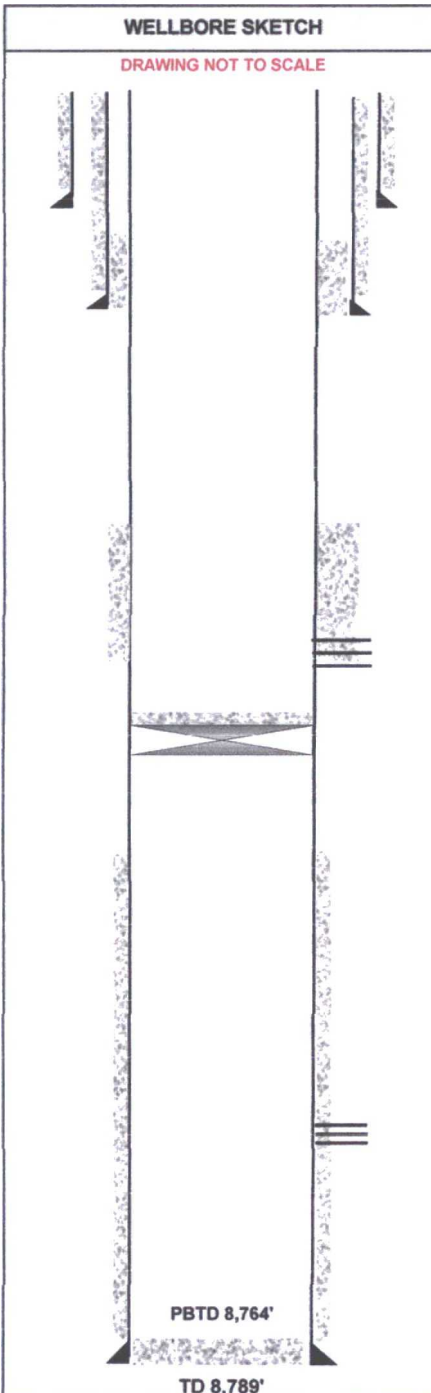
OPERATOR: Lime Rock Resources	LEASE / WELL: NVANU 9-3	SURVEY: Sec 2, T17S, R34E	Property No.
COMPLETION RIG:	COUNTY / STATE: Lea County, NM	SURFACE LOCATION: 460' FSL & 1680' FEL	FIELD: Vacuum Abo, North

DIRECTIONAL DATA		
KOP:	STRAIGHT HOLE	
MAX DEV:	deg @	MD
DEV @ PERFS:	deg @	MD
DEV @ PERFS:	deg @	MD
DEV @ PERFS:	deg @	MD

DRILLING / COMPLETION FLUID	
DRILLING FLUID:	ppg -
DRILLING FLUID:	ppg -
DRILLING FLUID:	ppg -
COMPLETION FLUID:	ppg -
PACKER FLUID:	ppg -

TUBULAR DATA							
Tubulars	Size	Weight	Grade	Thread	Top	MD	SKS
DRIVE PIPE							
CONDUCTOR							
SURFACE	12-3/4"	38#	H-40	STC	0'	435'	250
INTERMEDIATE	7"	23#	K-55	STC	0'	4904'	1,400
PRODUCTION	4-1/2"	11.6#	J-55	LTC	0'	8789'	180
PROD TIEBACK							
PROD LINER							
PROD LINER							
TUBING							
COILED TUBING							

WELLHEAD DATA	
TYPE	
WP	
T	FLANGE:
R	
E	THREAD:
E	
TUBING HANGER:	
BTM FLANGE:	
BPV PROFILE:	
ELEVATIONS:	GROUND ELEVATION
RKB-DF:	4063'
RKB-ELEV:	



EQUIPMENT DESCRIPTION	ID	OD	DEPTH TVD	DEPTH MD
Injection Well BEFORE P&A				
12-3/4" surface csg @ 435' - cmt'd to surface w/250 sxs				
Top of salt @ 1800' & 3040'.				
7" intermediate csg @ 4904' - cmt'd to surface w/1400 sxs				
CBL on 7/6/15 shows good cmt 4590'-4900' w/ spoty cmt below.				
On 3/22/09, Sheridan squeezed a csg leak w/unknown amount of cmt & depth.				
Top San Andres @ 4670'				
Holes in casing from 5303' - 5729'. SQ w/200 sx cmt on 7/21/15				
PT failed. Spotted 50 sx cmt 5123'-5715' & staged into small csg leaks on 7/27/15.				
Pressure test still failed.				
CIBP @ 5820' + 20' cmt				
TOC @ 7200' - CBL 7/6/15				
Top Abo @ 8000'				
Perfs @ 8542' - 8642' (34 holes)				
4-1/2" production csg @ 8789' in 6" hole - cmt'd w/180 sxs				
COMMENTS:	Working Interest:	PLUG BACK DEPTH:		
API # 30-025-29192	Net Revenue Interest:	TOTAL WELL DEPTH:		
Property#		PREPARED OR	DATE:	
Spud Date:		REVISED BY:		
Completed in		pmp		12/14/2016

CURRENT

DIRECTIONS TO LOCATION: Directions to well needed.

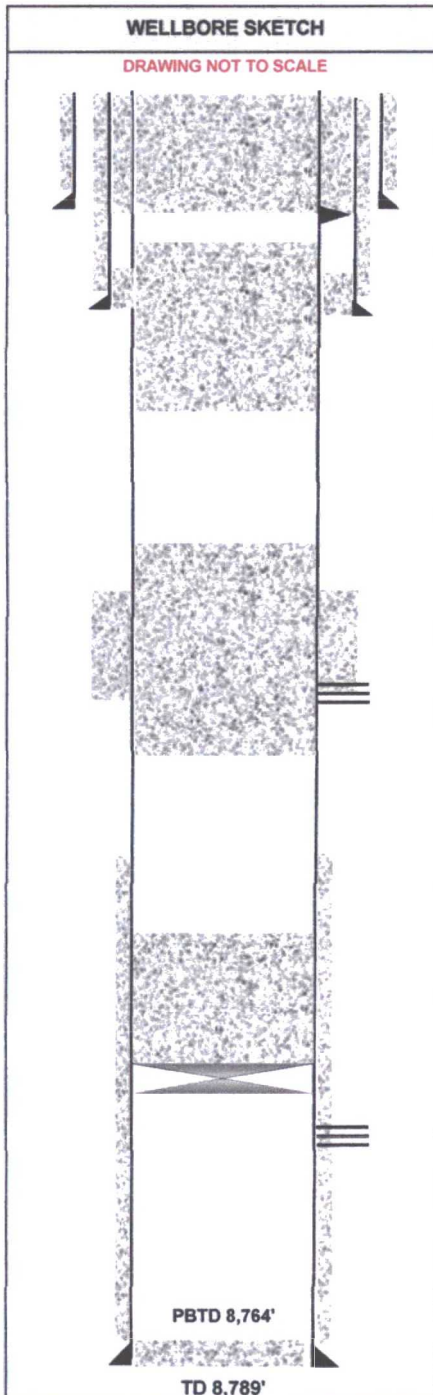
OPERATOR: Lime Rock Resources	LEASE / WELL: NVANU 9-3	SURVEY: Sec 2, T17S, R34E	Property No.
COMPLETION RIG:	COUNTY / STATE: Lea County, NM	SURFACE LOCATION: 460' FSL & 1680' FEL	FIELD: Vacuum Abo, North

DIRECTIONAL DATA		
KOP:	STRAIGHT HOLE	
MAX DEV:	deg @	MD
DEV @ PERFS:	deg @	MD
DEV @ PERFS:	deg @	MD
DEV @ PERFS:	deg @	MD

DRILLING / COMPLETION FLUID	
DRILLING FLUID:	ppg -
DRILLING FLUID:	ppg -
DRILLING FLUID:	ppg -
COMPLETION FLUID:	ppg -
PACKER FLUID:	ppg -

TUBULAR DATA							
Tubulars	Size	Weight	Grade	Thread	Top	MD	SKS
DRIVE PIPE							
CONDUCTOR							
SURFACE	12-3/4"	38#	H-40	STC	0'	435'	250
INTERMEDIATE	7"	23#	K-55	STC	0'	4904'	1,400
PRODUCTION	4-1/2"	11.6#	J-55	LTC	0'	8789'	180
PROD TIEBACK							
PROD LINER							
PROD LINER							
TUBING							
COILED TUBING							

WELLHEAD DATA	
TYPE	
WP	
T	FLANGE:
R	THREAD:
E	
E	
TUBING HANGER:	
BTM FLANGE:	
BPV PROFILE:	
ELEVATIONS:	GROUND ELEVATION
RKB-DF:	4063'
RKB-ELEV:	



EQUIPMENT DESCRIPTION	ID	OD	DEPTH TVD	DEPTH MD
Injection Well				
AFTER P&A				
PLUG #4: 1850'-Surface: Perfed @ 1850' & 307 sx (1850') cmt				
12-3/4" surface csg @ 435' - cmt'd to surface w/250 sxs				
Top of salt @ 1800' & 3040'.				
7" intermediate csg @ 4904' - cmt'd to surface w/1400 sxs				
CBL on 7/6/15 shows good cmt 4590'-4900' w/ spoty cmt below.				
PLUG #3: 4954'-2990': 145 sx (1964') cmt				
On 3/22/09, Sheridan squeezed a csg leak w/unknown amount of cmt & depth.				
Top San Andres @ 4670'				
PLUG #2: 6190'-5200': 73 sx (990') cmt				
Holes in casing from 5303' - 5729'. SQ w/200 sx cmt on 7/21/15				
PT failed. Spotted 50 sx cmt 5123'-5715' & staged into small csg leaks on 7/27/15.				
Pressure test still failed.				
Top Glorieta @ 6140'				
TOC @ 7200' - CBL 7/6/15				
PLUG #1: 8492'-7950': CIBP @ 8492' & 40 SX (542') CMT				
Top Abo @ 8000'				
Perfs @ 8542' - 8642' (34 holes)				
4-1/2" 11.6# csg @ 8789' in 6" hole - cmt'd w/180 sxs				
COMMENTS:	Working Interest:	PLUG BACK DEPTH:		
API # 30-025-29192	Net Revenue Interest:	TOTAL WELL DEPTH:		
Property#		PREPARED OR	DATE:	
Spud Date:		REVISED BY:		
Completed in		pmp		12/14/2016

AFTER P&A

DIRECTIONS TO LOCATION: Directions to well needed.