

DISTRICT I  
1625 N. FRENCH DR., HOBBS, NM 88240  
Phone: (505) 393-6181 Fax: (505) 393-0720

DISTRICT II  
611 S. FIRST ST., ARTESIA, NM 88210  
Phone: (505) 748-1283 Fax: (505) 748-9729

DISTRICT III  
1000 RIO BRAZOS RD., AZTEC, NM 87410  
Phone: (505) 334-6176 Fax: (505) 334-6170

DISTRICT IV  
1220 S. ST. FRANCIS DR., SANTA FE, NM 87505  
Phone: (505) 476-3460 Fax: (505) 476-3462

State of New Mexico  
Energy, Minerals & Natural Resources Department  
**OIL CONSERVATION DIVISION**  
1220 SOUTH ST. FRANCIS DR.  
Santa Fe, New Mexico 87505

Form C-102  
Revised August 1, 2011  
Submit one copy to appropriate  
District Office

☐ AMENDED REPORT

**WELL LOCATION AND ACREAGE DEDICATION PLAT**

API Number 30-025-43286	Pool Code 96434	Pool Name Red Hills; Bone Spring, North
Property Code	Property Name SOMBRERO FEDERAL COM	Well Number 4H
OGRID No. 229137	Operator Name COG OPERATING, LLC	Elevation 3474.5'

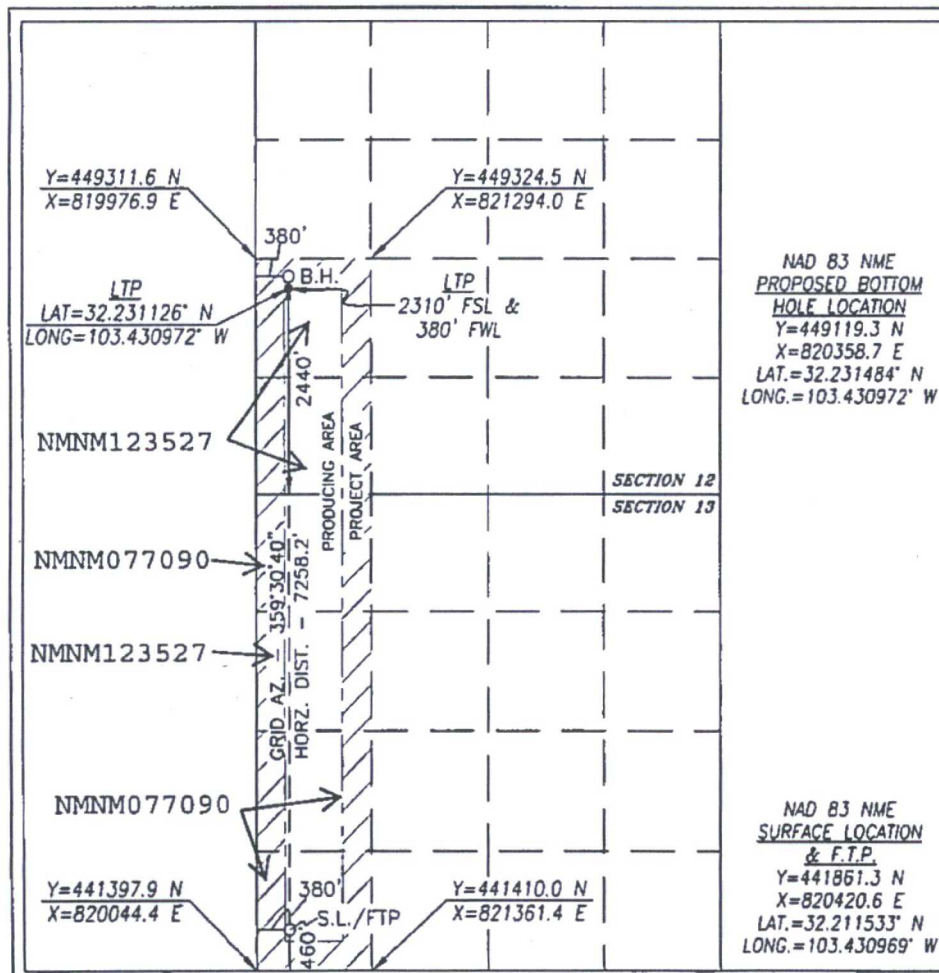
**Surface Location**

UL or lot No.	Section	Township	Range	Lot Idn	Feet from the	North/South line	Feet from the	East/West line	County
M	13	24-S	34-E		460	SOUTH	380	WEST	LEA

**Bottom Hole Location If Different From Surface**

UL or lot No.	Section	Township	Range	Lot Idn	Feet from the	North/South line	Feet from the	East/West line	County
E 2	12	24-S	34-E		2440	SOUTH	380	WEST	LEA
Dedicated Acres 240	Joint or Infill	Consolidation Code	Order No.						

NO ALLOWABLE WILL BE ASSIGNED TO THIS COMPLETION UNTIL ALL INTERESTS HAVE BEEN CONSOLIDATED  
OR A NON-STANDARD UNIT HAS BEEN APPROVED BY THE DIVISION



NAD 83 NME  
PROPOSED BOTTOM  
HOLE LOCATION  
Y=449119.3 N  
X=820358.7 E  
LAT.=32.231484° N  
LONG.=103.430972° W

NAD 83 NME  
SURFACE LOCATION  
& F.T.P.  
Y=441861.3 N  
X=820420.6 E  
LAT.=32.211533° N  
LONG.=103.430969° W

**OPERATOR CERTIFICATION**

I hereby certify that the information herein is true and complete to the best of my knowledge and belief, and that this organization either owns a working interest or unless mineral interest in the land including the proposed bottom hole location or has a right to drill this well at this location pursuant to a contract with an owner of such mineral or working interest, or to a voluntary pooling agreement or a compulsory pooling order heretofore entered by the division

Signature: *Mayte Reyes* Date: 11-29-16  
Printed Name: Mayte Reyes  
E-mail Address: mreyes1@concho.com

**SURVEYOR CERTIFICATION**

I hereby certify that the well location shown on this plat was plotted from field notes of actual surveys made by me or under my supervision, and that the same is true and correct to the best of my belief.

DECEMBER 30, 2014

Date of Survey

Signature & Seal of Professional Surveyor



Certificate No. CHAD HARCROW 17777  
W.O. # 16-858 DRAWN BY: SP