

District I
1625 N. French Dr., Hobbs, NM 88240
Phone: (575) 393-6161 Fax: (575) 393-0720
District II
811 S. First St., Artesia, NM 88210
Phone: (575) 748-1283 Fax: (575) 748-9720
District III
1000 Rio Brazos Road, Aztec, NM 87410
Phone: (505) 334-6178 Fax: (505) 334-6170
District IV
1220 S. St. Francis Dr., Santa Fe, NM 87505
Phone: (505) 476-3460 Fax: (505) 476-3462

State of New Mexico
Energy, Minerals & Natural Resources Department
OIL CONSERVATION DIVISION
1220 South St. Francis Dr.
Santa Fe, NM 87505

Form C-102
Revised August 1, 2011
Submit one copy to appropriate
District Office
 AMENDED REPORT

HOBBS OCD

DEC 19 2016

RECEIVED

WELL LOCATION AND ACREAGE DEDICATION PLAT

¹ API Number 30-025-43505	² Pool Code 50461	³ Pool Name QUAIL RIDGE; BOKE SPRINGS SOUTH
⁴ Property Code 713886	⁵ Property Name NORTH LEA 4 FED COM	
⁷ OGRID No. 18917	⁸ Operator Name READ & STEVENS, INC.	⁶ Well Number 3H
		⁹ Elevation 3651.2

¹⁰ Surface Location

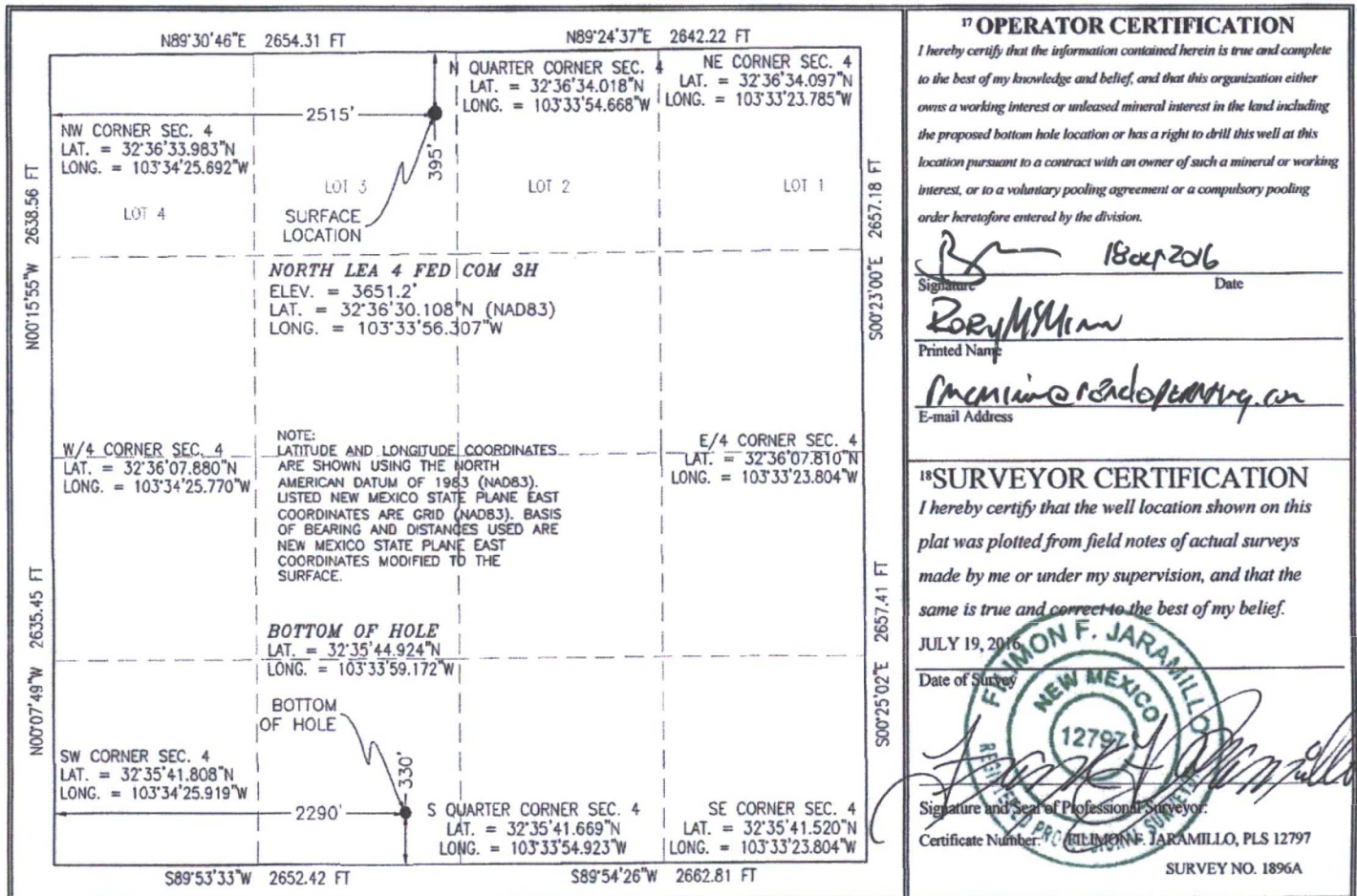
UL or lot no.	Section	Township	Range	Lot Idn	Feet from the	North/South line	Feet from the	East/West line	County
3	4	20 S	34 E	3	395	NORTH	2515	WEST	LEA

¹¹ Bottom Hole Location If Different From Surface

UL or lot no.	Section	Township	Range	Lot Idn	Feet from the	North/South line	Feet from the	East/West line	County
N	4	20 S	34 E		330	SOUTH	2290	WEST	LEA

¹² Dedicated Acres 160.44	¹³ Joint or Infill	¹⁴ Consolidation Code	¹⁵ Order No.
---	-------------------------------	----------------------------------	-------------------------

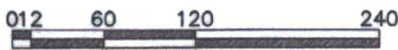
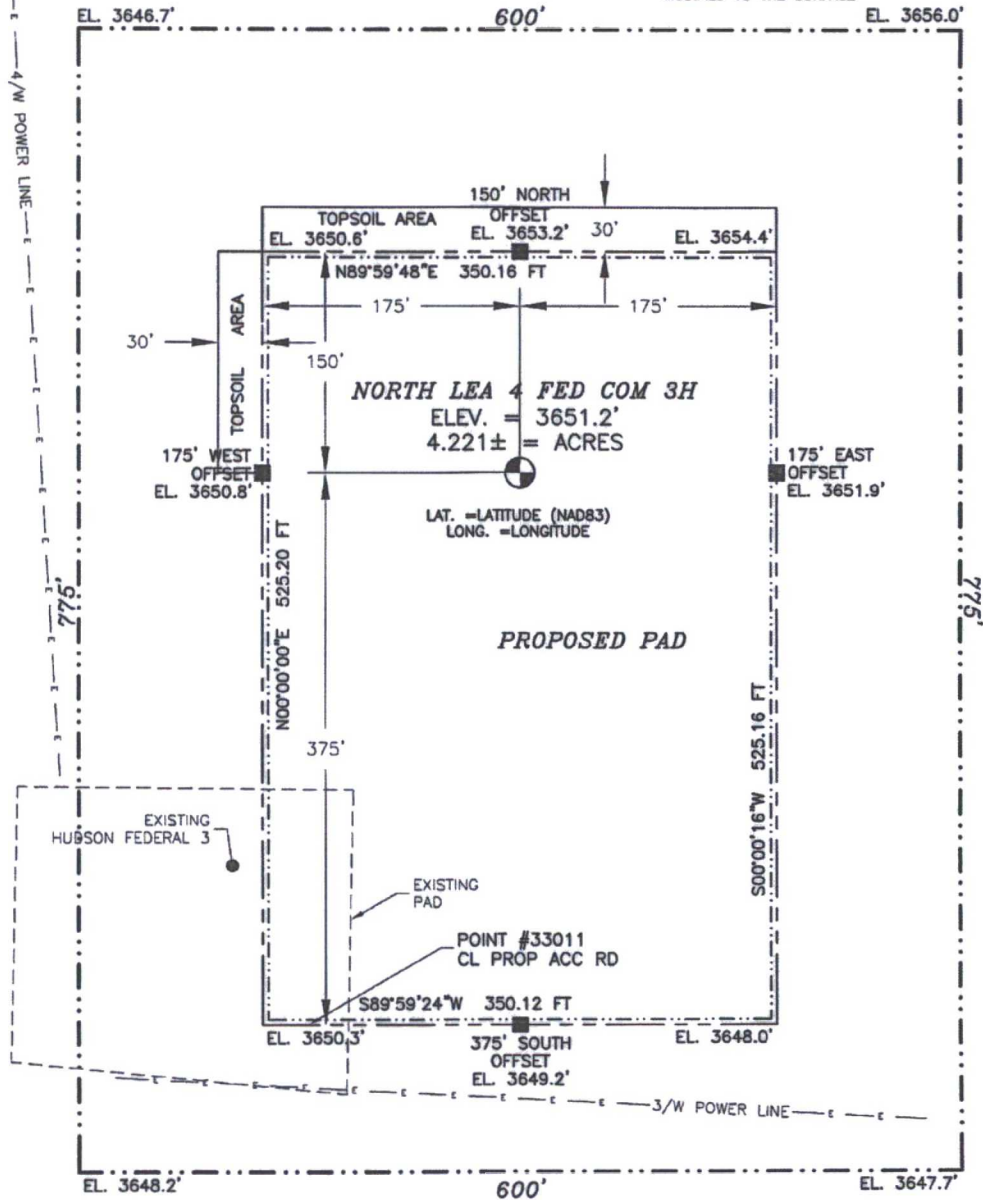
No allowable will be assigned to this completion until all interests have been consolidated or a non-standard unit has been approved by the division.



SECTION 4, TOWNSHIP 20 SOUTH, RANGE 34 EAST, N.M.P.M.
LEA COUNTY, STATE OF NEW MEXICO

SITE MAP

NOTE: LATITUDE AND LONGITUDE COORDINATES ARE SHOWN USING THE NORTH AMERICAN DATUM OF 1983 (NAD83). LISTED NEW MEXICO STATE PLANE EAST COORDINATES ARE GRID (NAD83). BASIS OF BEARING AND DISTANCES USED ARE NEW MEXICO STATE PLANE EAST COORDINATES MODIFIED TO THE SURFACE



SCALE 1" = 120'
DIRECTIONS TO LOCATION

FROM MILE MARKER #78 ON HWY 82-180 GO EAST APPROX 0.2 OF A MILE TO LEASE ROAD ON RIGHT (SOUTH) TURN SOUTH GO APPROX. 0.42 OF A MILE ROAD TURNS RIGHT (WEST) TURN WEST GO APPROX. 0.17 OF A MILE TO ROAD LATH ON RIGHT (NORTH) FOLLOW ROAD LATHS WITH RED & WHITE FLAGGING NORTH APPROX. 0.1 MILES TO LOCATION

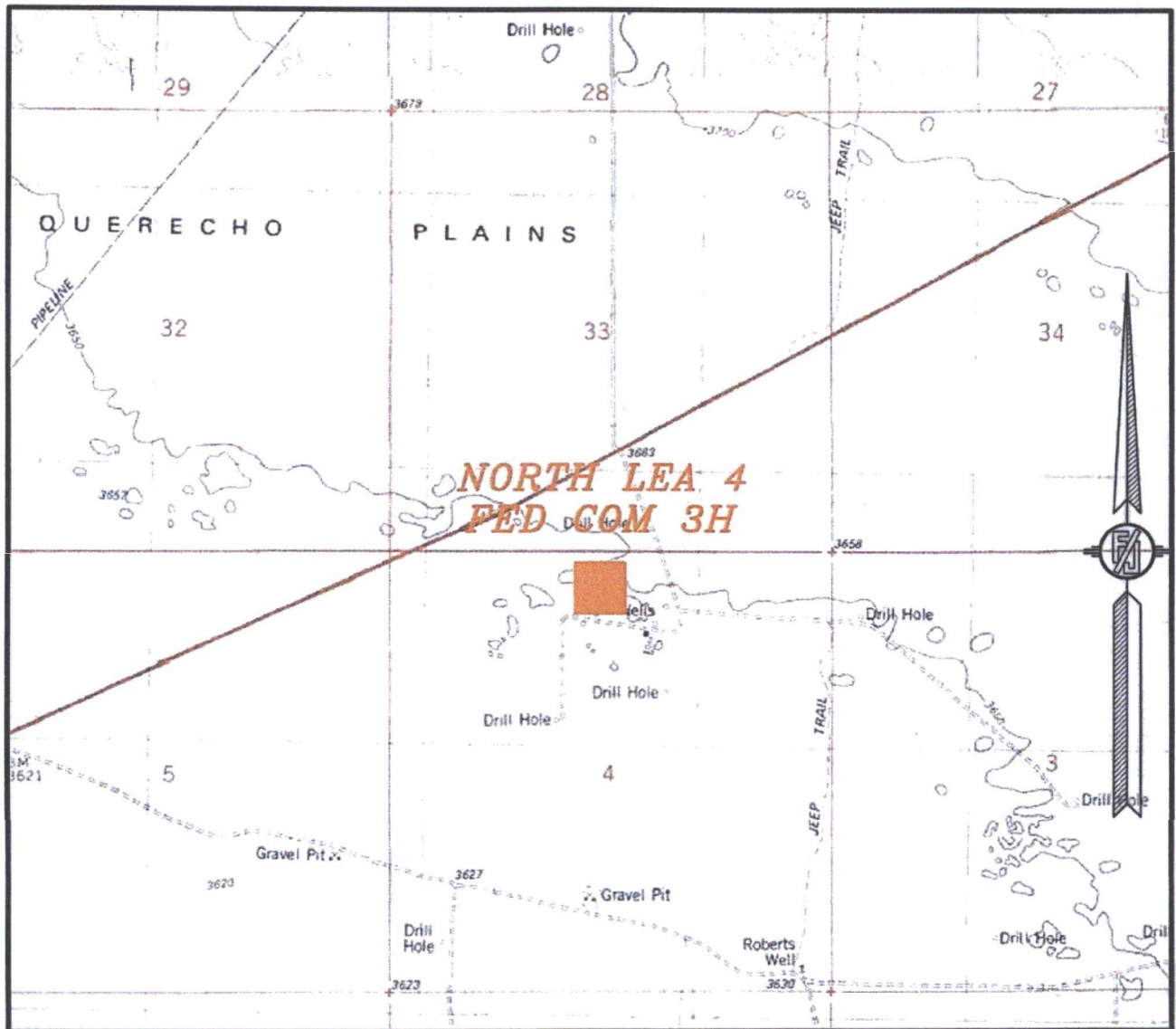
READ & STEVENS, INC.
NORTH LEA 4 FED COM 3H
LOCATED 395 FT. FROM THE NORTH LINE
AND 2515 FT. FROM THE WEST LINE OF
SECTION 4, TOWNSHIP 20 SOUTH,
RANGE 34 EAST, N.M.P.M.
LEA COUNTY, STATE OF NEW MEXICO

JULY 18, 2016

SURVEY NO. 1896A

MADRON SURVEYING, INC. 301 SOUTH CANAL (575) 234-3341 CARLSBAD, NEW MEXICO

SECTION 4, TOWNSHIP 20 SOUTH, RANGE 34 EAST, N.M.P.M.
 LEA COUNTY, STATE OF NEW MEXICO
 LOCATION VERIFICATION MAP



USGS QUAD MAP:
 LEA

NOT TO SCALE

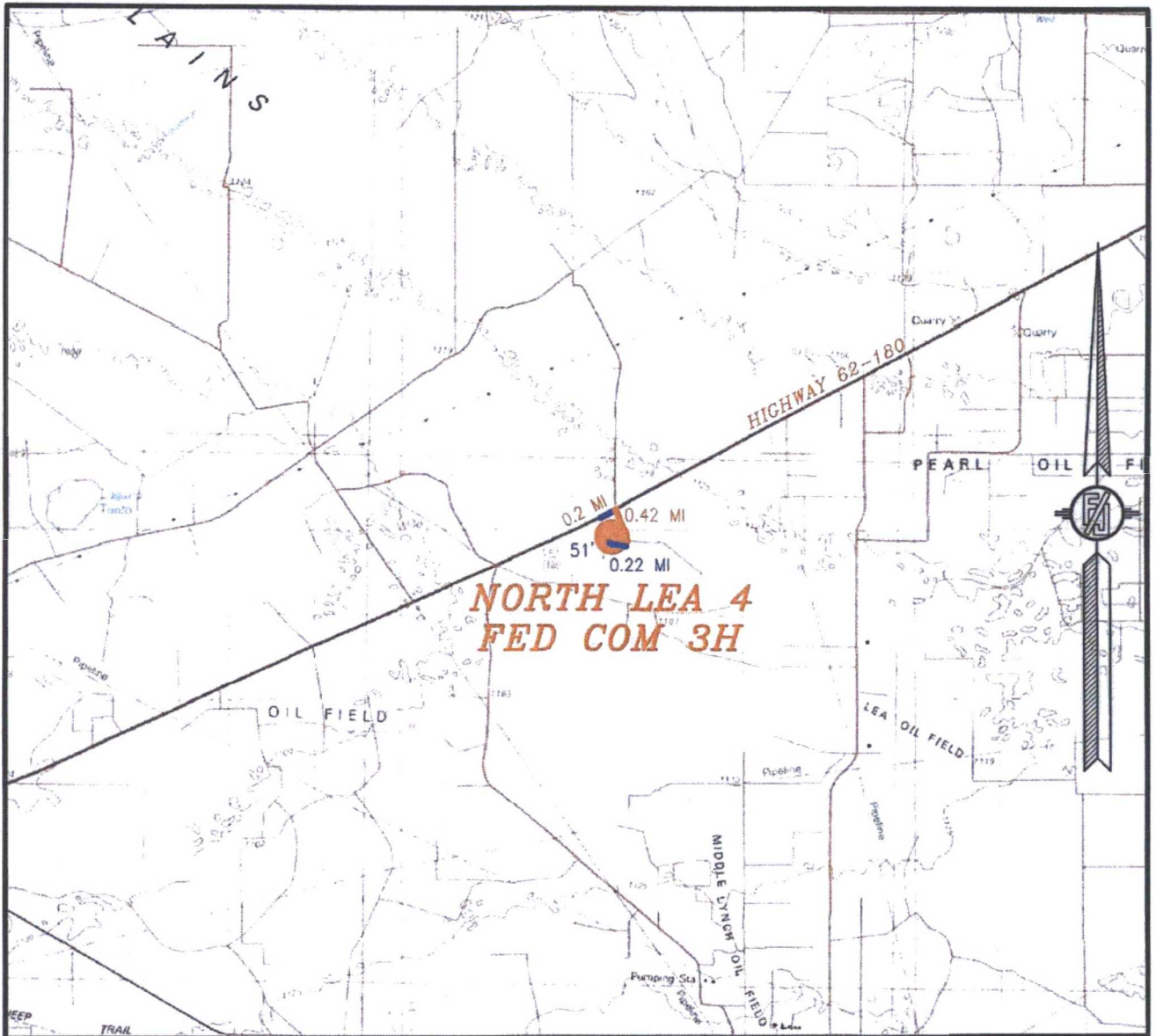
READ & STEVENS, INC.
NORTH LEA 4 FED COM 3H
 LOCATED 395 FT. FROM THE NORTH LINE
 AND 2515 FT. FROM THE WEST LINE OF
 SECTION 4, TOWNSHIP 20 SOUTH,
 RANGE 34 EAST, N.M.P.M.
 LEA COUNTY, STATE OF NEW MEXICO

JULY 18, 2016

SURVEY NO. 1896A

MADRON SURVEYING, INC. 301 SOUTH CANAL (575) 234-3341 CARLSBAD, NEW MEXICO

SECTION 4, TOWNSHIP 20 SOUTH, RANGE 34 EAST, N.M.P.M.
 LEA COUNTY, STATE OF NEW MEXICO
 VICINITY MAP



DISTANCES IN MILES

NOT TO SCALE

DIRECTIONS TO LOCATION

FROM MILE MARKER #78 ON HWY 62-180 GO EAST APPROX 0.2 OF A MILE TO LEASE ROAD ON RIGHT (SOUTH) TURN SOUTH GO APPROX. 0.42 OF A MILE ROAD TURNS RIGHT (WEST) TURN WEST GO APPROX. 0.22 OF A MILE TO ROAD LATH ON RIGHT (NORTH) FOLLOW ROAD LATHS WITH RED & WHITE FLAGGING NORTH APPROX. 51' TO THE SOUTHWEST PAD CORNER FOR THIS LOCATION.

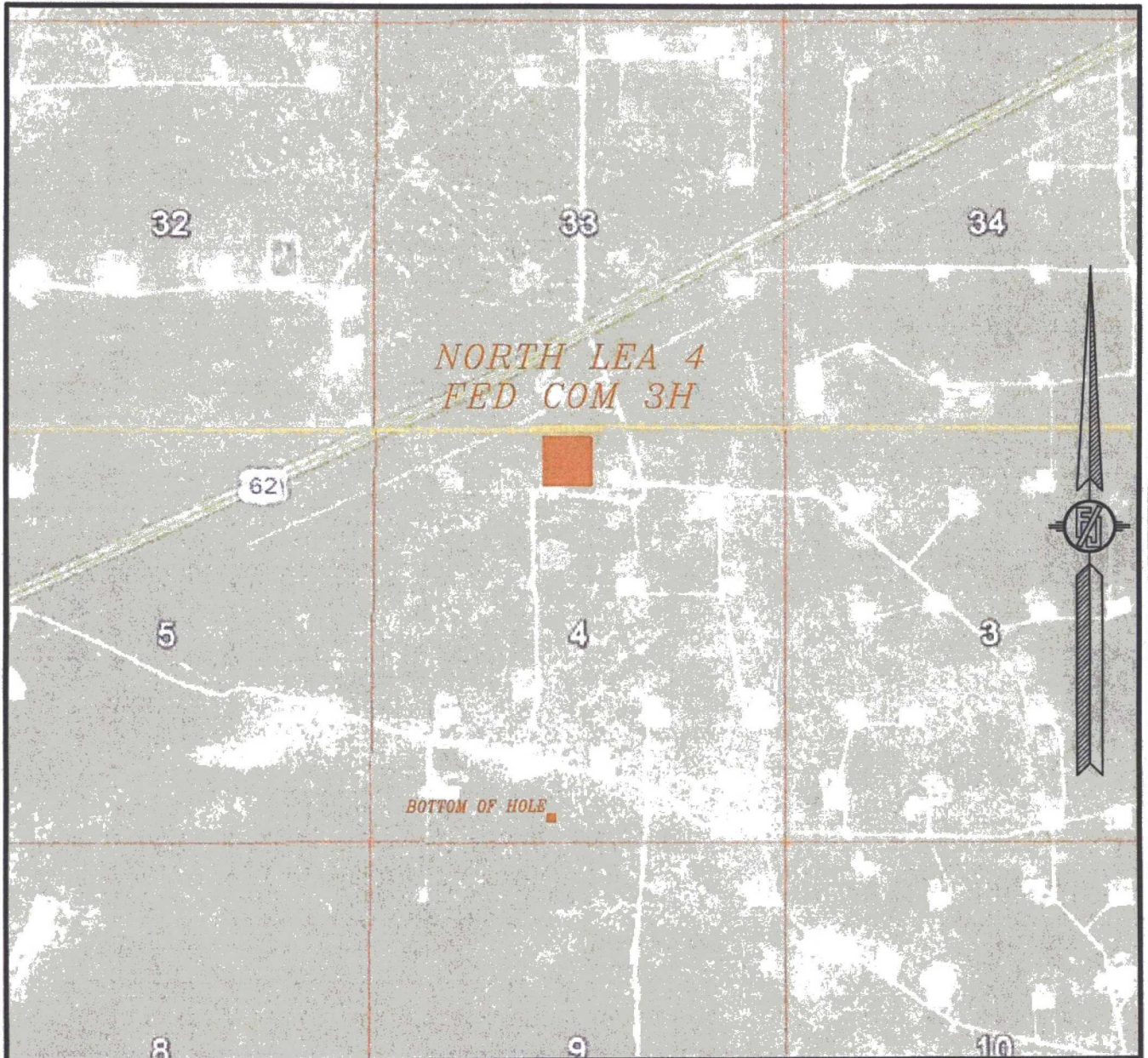
READ & STEVENS, INC.
NORTH LEA 4 FED COM 3H
 LOCATED 395 FT. FROM THE NORTH LINE
 AND 2515 FT. FROM THE WEST LINE OF
 SECTION 4, TOWNSHIP 20 SOUTH,
 RANGE 34 EAST, N.M.P.M.
 LEA COUNTY, STATE OF NEW MEXICO

JULY 18, 2016

SURVEY NO. 1896A

MADRON SURVEYING, INC. 301 SOUTH CANAL (575) 234-3341 CARLSBAD, NEW MEXICO

SECTION 4, TOWNSHIP 20 SOUTH, RANGE 34 EAST, N.M.P.M.
LEA COUNTY, STATE OF NEW MEXICO
AERIAL PHOTO



NOT TO SCALE
AERIAL PHOTO:
GOOGLE EARTH
FEBRUARY 2014

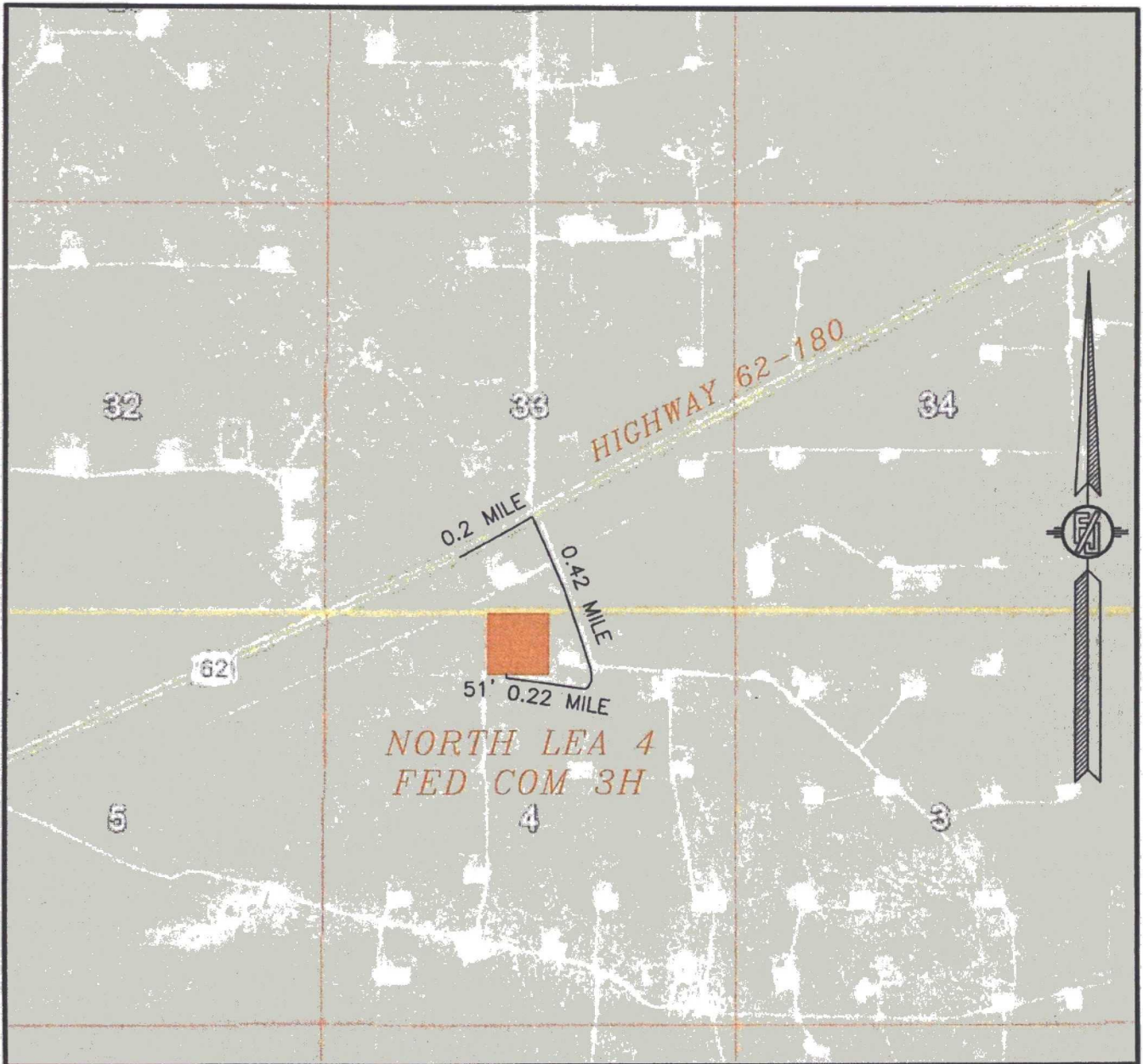
READ & STEVENS, INC.
NORTH LEA 4 FED COM 3H
LOCATED 395 FT. FROM THE NORTH LINE
AND 2515 FT. FROM THE WEST LINE OF
SECTION 4, TOWNSHIP 20 SOUTH,
RANGE 34 EAST, N.M.P.M.
LEA COUNTY, STATE OF NEW MEXICO

JULY 18, 2016

SURVEY NO. 1896A

MADRON SURVEYING, INC. 301 SOUTH CANAL (575) 234-3341 CARLSBAD, NEW MEXICO

SECTION 4, TOWNSHIP 20 SOUTH, RANGE 34 EAST, N.M.P.M.
LEA COUNTY, STATE OF NEW MEXICO
ACCESS AERIAL ROUTE MAP



NOT TO SCALE
AERIAL PHOTO:
GOOGLE EARTH
FEBRUARY 2014

READ & STEVENS, INC.
NORTH LEA 4 FED COM 3H
LOCATED 395 FT. FROM THE NORTH LINE
AND 2515 FT. FROM THE WEST LINE OF
SECTION 4, TOWNSHIP 20 SOUTH,
RANGE 34 EAST, N.M.P.M.
LEA COUNTY, STATE OF NEW MEXICO

JULY 18, 2016

SURVEY NO. 1896A

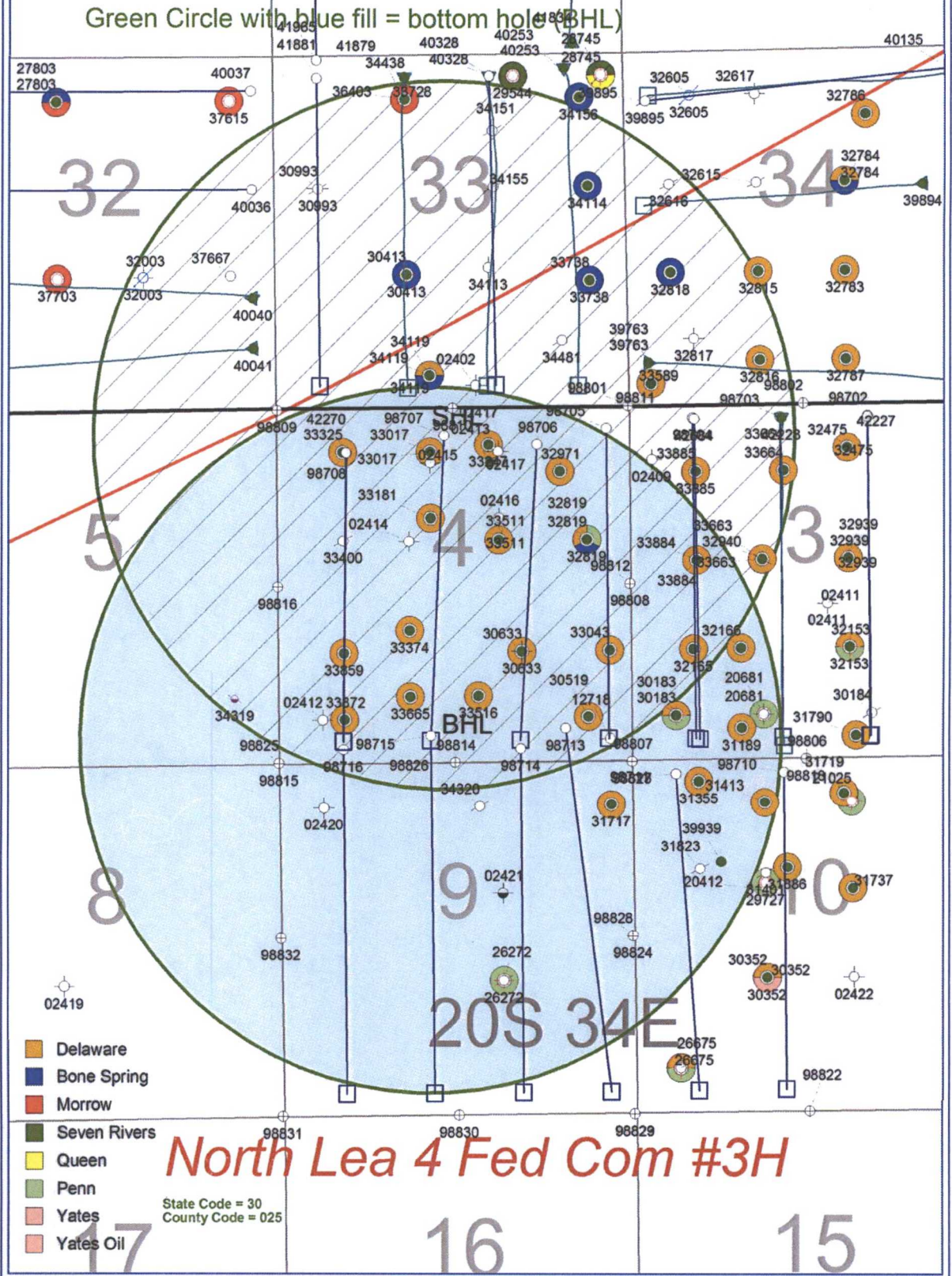
MADRON SURVEYING, INC. 301 SOUTH CANAL (575) 234-3341 CARLSBAD, NEW MEXICO

29 28 27

1-MILE RADIUS MAP

Green Circle with diagonal line = surface hole (SHL)

Green Circle with blue fill = bottom hole (BHL)



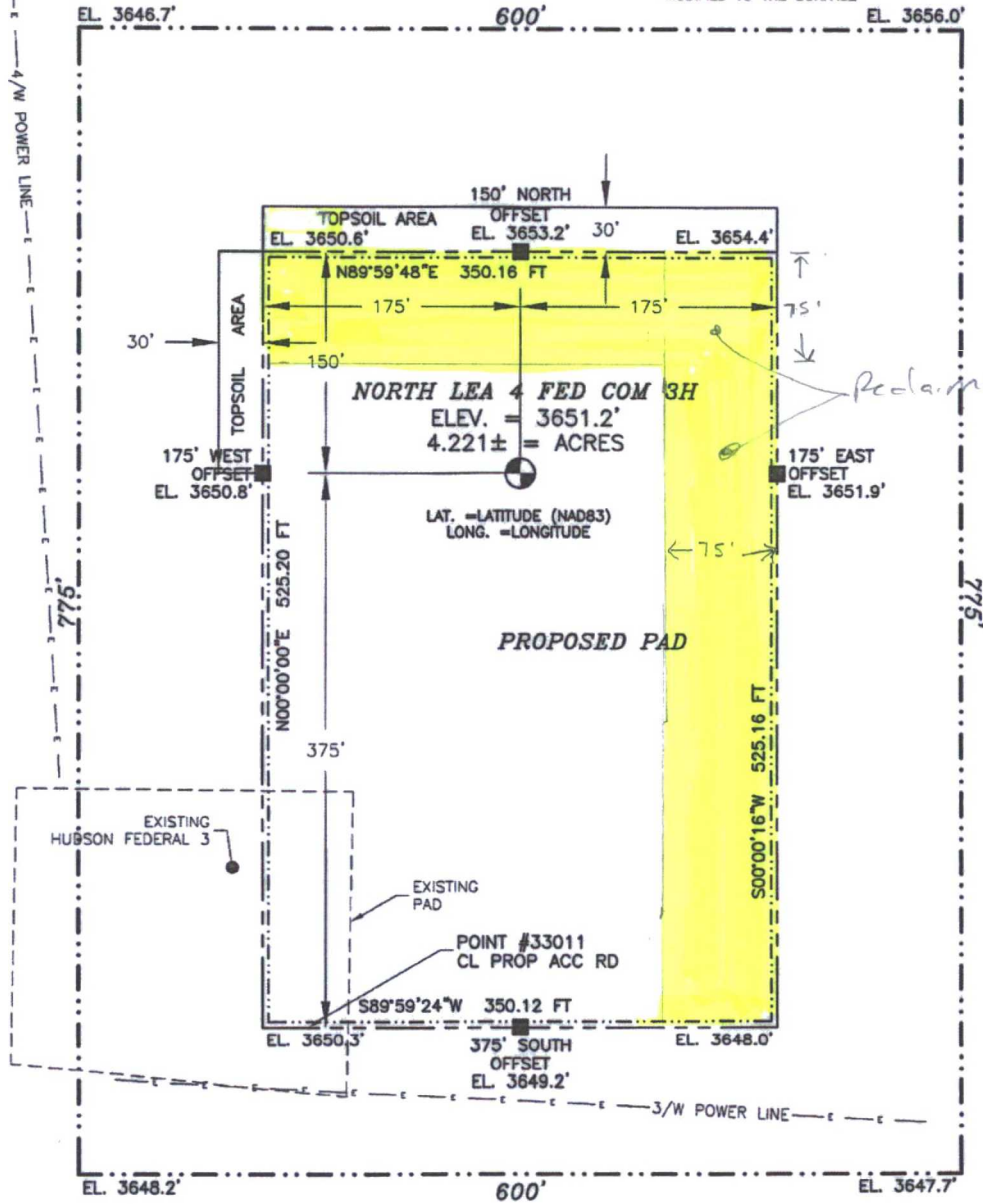
North Lea 4 Fed Com #3H

State Code = 30
County Code = 025

SECTION 4, TOWNSHIP 20 SOUTH, RANGE 34 EAST, N.M.P.M.
LEA COUNTY, STATE OF NEW MEXICO

SITE MAP

NOTE: LATITUDE AND LONGITUDE COORDINATES ARE SHOWN USING THE NORTH AMERICAN DATUM OF 1983 (NAD83). LISTED NEW MEXICO STATE PLANE EAST COORDINATES ARE GRID (NAD83). BASIS OF BEARING AND DISTANCES USED ARE NEW MEXICO STATE PLANE EAST COORDINATES MODIFIED TO THE SURFACE



012 60 120 240

SCALE 1" = 120'

DIRECTIONS TO LOCATION
FROM MILE MARKER #78 ON HWY 62-180 GO EAST APPROX 0.2 OF A MILE TO LEASE ROAD ON RIGHT (SOUTH) TURN SOUTH GO APPROX. 0.42 OF A MILE ROAD TURNS RIGHT (WEST) TURN WEST GO APPROX. 0.17 OF A MILE TO ROAD LATH ON RIGHT (NORTH) FOLLOW ROAD LATHS WITH RED & WHITE FLAGGING NORTH APPROX. 0.1 MILES TO LOCATION

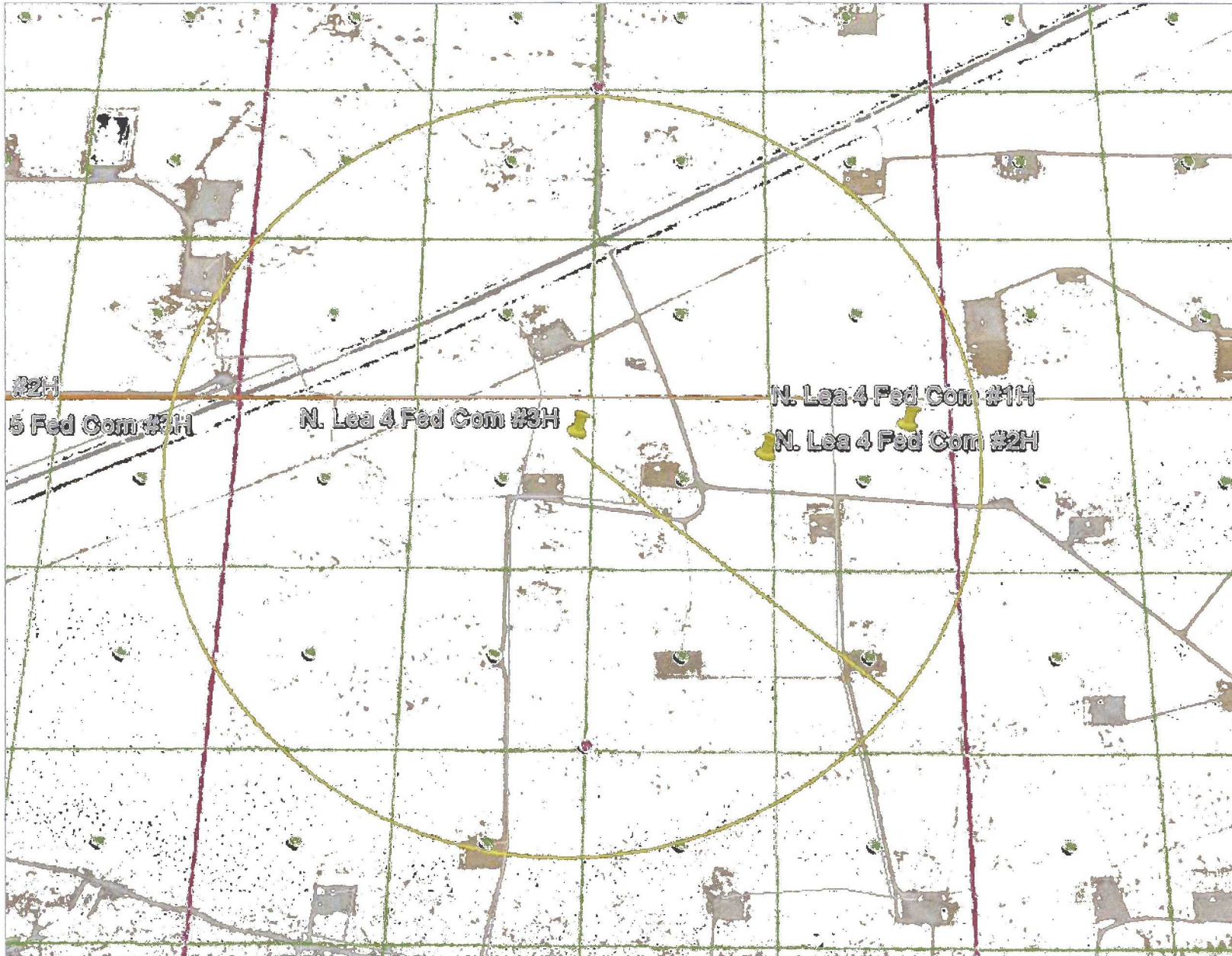
READ & STEVENS, INC.
NORTH LEA 4 FED COM 3H
LOCATED 395 FT. FROM THE NORTH LINE
AND 2515 FT. FROM THE WEST LINE OF
SECTION 4, TOWNSHIP 20 SOUTH,
RANGE 34 EAST, N.M.P.M.
LEA COUNTY, STATE OF NEW MEXICO

JULY 18, 2016

SURVEY NO. 1896A

MADRON SURVEYING, INC. 301 SOUTH CANAL CARLSBAD, NEW MEXICO
(575) 234-3341

[Handwritten signature]
15 October 2016



3000' ROE