

District I
1625 N. French Dr., Hobbs, NM 88240
Phone: (575) 393-6161 Fax: (575) 393-0720
District II
811 S. First St., Artesia, NM 88210
Phone: (575) 748-1283 Fax: (575) 748-9720
District III
1000 Rio Brazos Road, Aztec, NM 87410
Phone: (505) 334-6178 Fax: (505) 334-6170
District IV
1220 S. St. Francis Dr., Santa Fe, NM 87505
Phone: (505) 476-3460 Fax: (505) 476-3462

State of New Mexico
Energy, Minerals & Natural Resources Department
OIL CONSERVATION DIVISION
1220 South St. Francis Dr.
Santa Fe, NM 87505

Form C-102
Revised August 1, 2011
Submit one copy to appropriate
District Office

☒ AMENDED REPORT

WELL LOCATION AND ACREAGE DEDICATION PLAT

¹ API Number 30-025-43387	² Pool Code 97779	³ Pool Name WC025; 4-05; 52535234; Delaware
⁴ Property Code 316749	⁵ Property Name MUSIC MASTER 27 FEDERAL	
⁶ OGRID No. 270329	⁷ Operator Name ENDURANCE RESOURCES, LLC	⁸ Well Number 3H
		⁹ Elevation 3193.4

" Surface Location

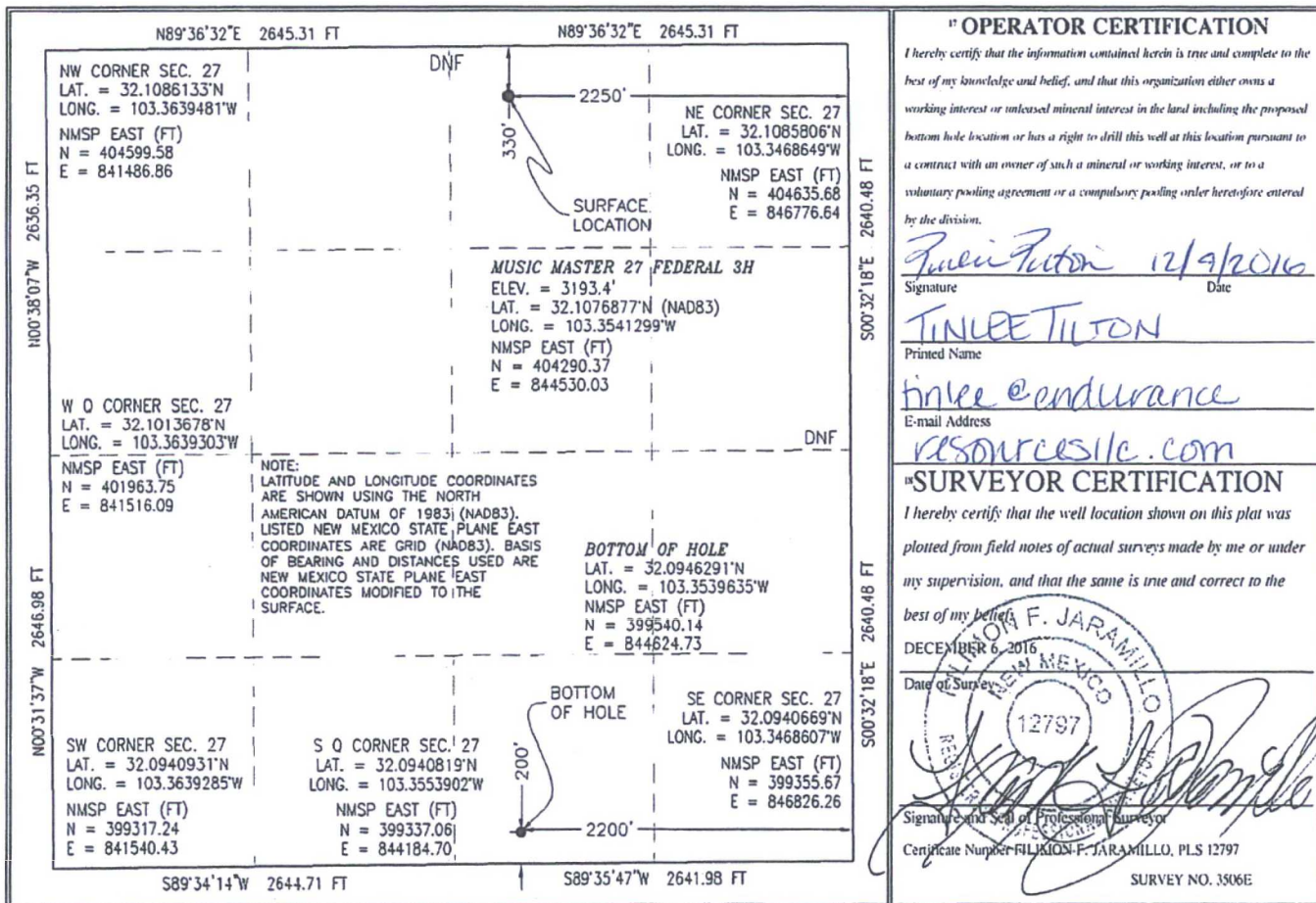
UL or lot no.	Section	Township	Range	Lot Idn	Feet from the	North/South line	Feet from the	East/West line	County
B	27	25 S	35 E		330	NORTH	2250	EAST	LEA

" Bottom Hole Location If Different From Surface

UL or lot no.	Section	Township	Range	Lot Idn	Feet from the	North/South line	Feet from the	East/West line	County
O	27	25 S	35 E		200	SOUTH	2200	EAST	LEA

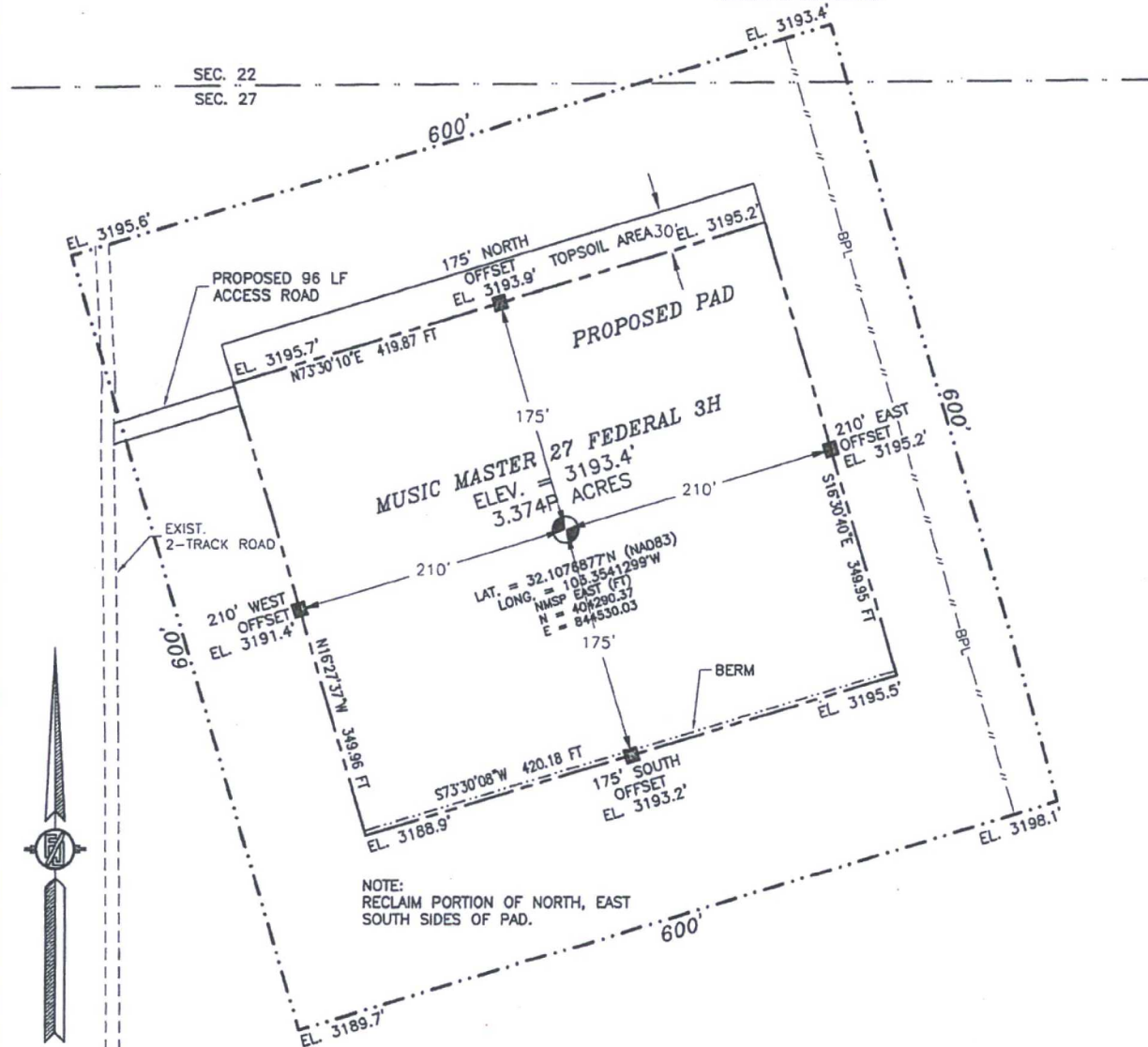
¹⁰ Dedicated Acres 160	¹¹ Joint or Infill	¹² Consolidation Code	¹³ Order No.
---	-------------------------------	----------------------------------	-------------------------

No allowable will be assigned to this completion until all interests have been consolidated or a non-standard unit has been approved by the division.



SECTION 27, TOWNSHIP 25 SOUTH, RANGE 35 EAST, N.M.P.M.
LEA COUNTY, STATE OF NEW MEXICO
SITE MAP

NOTE: LATITUDE AND LONGITUDE COORDINATES ARE SHOWN USING THE NORTH AMERICAN DATUM OF 1983 (NAD83). LISTED NEW MEXICO STATE PLANE EAST COORDINATES ARE GRID (NAD83). BASIS OF BEARING AND DISTANCES USED ARE NEW MEXICO STATE PLANE EAST COORDINATES MODIFIED TO THE SURFACE



0 12 60 120 240

SCALE 1" = 120'

DIRECTIONS TO LOCATION

FROM STATE HIGHWAY 128 AND CR 2 (BATTLE AXE) GO EAST ON STATE HIGHWAY 128 FOR APPROX. 0.2 OF A MILE, TURN RIGHT (SOUTH) ON CALICHE LEASE ROAD AND GO 4.2 MILES, TURN LEFT (SOUTHEAST) AND GO APPROX. 1.2 MILES, BEND RIGHT (SOUTH) AND GO APPROX. 0.7 OF A MILE, TURN LEFT (EAST) AND GO APPROX. 2.3 MILES, TURN LEFT (NORTH) ON 2-TRACK ROAD AND GO APPROX. 611' TO BEGIN ROAD SURVEY, GO NORTHEAST APPROX. 96' TO NORTHWEST PAD CORNER FOR THIS LOCATION.

ENDURANCE RESOURCES, LLC
MUSIC MASTER 27 FEDERAL 3H
LOCATED 330 FT. FROM THE NORTH LINE
AND 2250 FT. FROM THE EAST LINE OF
SECTION 27, TOWNSHIP 25 SOUTH,
RANGE 35 EAST, N.M.P.M.
LEA COUNTY, STATE OF NEW MEXICO

DECEMBER 6, 2016

SURVEY NO. 3506E

MADRON SURVEYING, INC. 301 SOUTH CANAL (575) 234-3341 CARLSBAD, NEW MEXICO

SECTION 27, TOWNSHIP 25 SOUTH, RANGE 35 EAST, N.M.P.M.
LEA COUNTY, STATE OF NEW MEXICO
LOCATION VERIFICATION MAP



USGS QUAD MAP:
JAVALINA BASIN

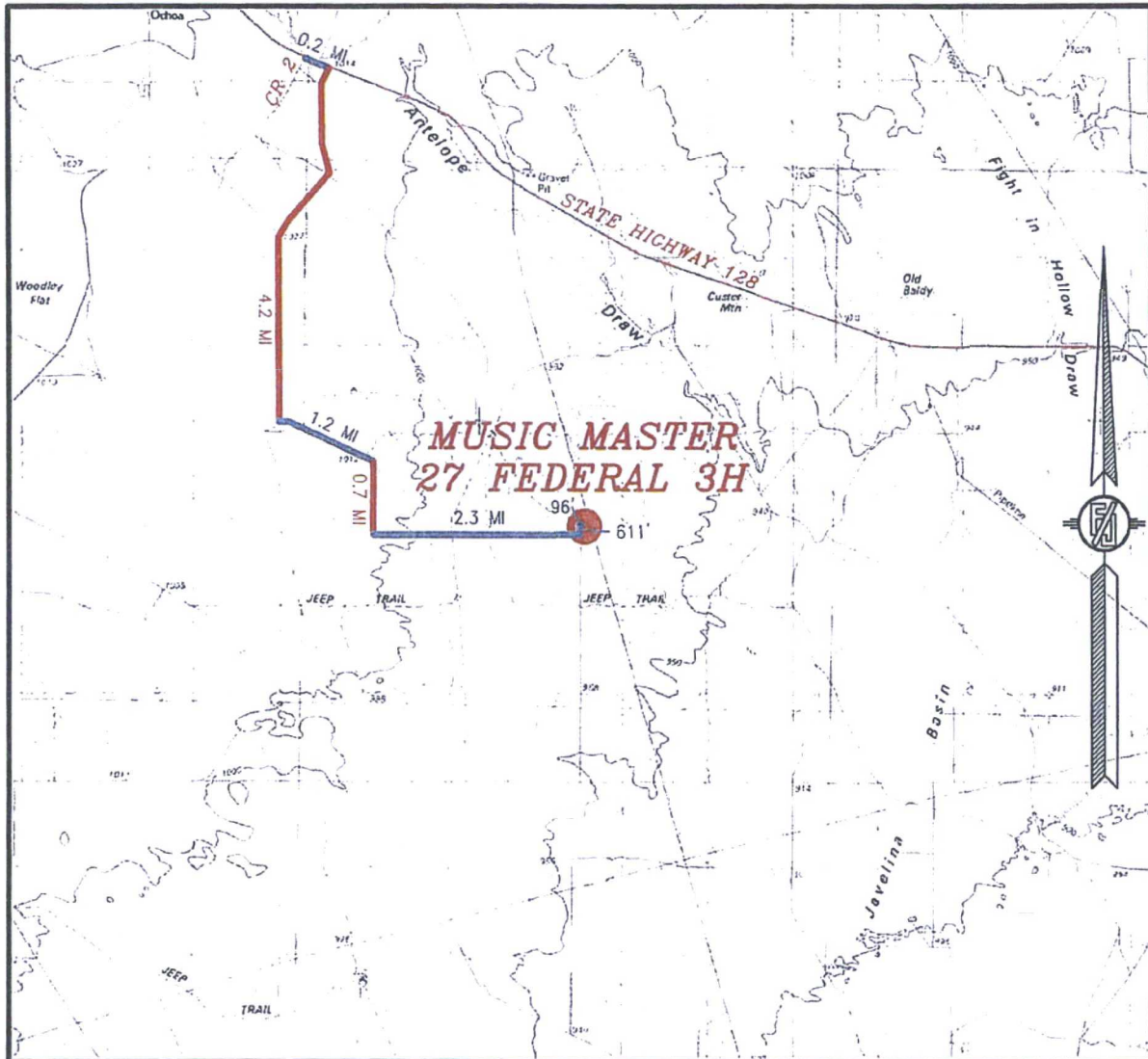
NOT TO SCALE

ENDURANCE RESOURCES, LLC
MUSIC MASTER 27 FEDERAL 3H
LOCATED 330 FT. FROM THE NORTH LINE
AND 2250 FT. FROM THE EAST LINE OF
SECTION 27, TOWNSHIP 25 SOUTH,
RANGE 35 EAST, N.M.P.M.
LEA COUNTY, STATE OF NEW MEXICO

DECEMBER 6, 2016

MADRON SURVEYING, INC. 301 SOUTH CANAL (575) 234-3341 CARLSBAD, NEW MEXICO SURVEY NO. 3506E

SECTION 27, TOWNSHIP 25 SOUTH, RANGE 35 EAST, N.M.P.M.
LEA COUNTY, STATE OF NEW MEXICO
VICINITY MAP



DISTANCES IN MILES

NOT TO SCALE

DIRECTIONS TO LOCATION

FROM STATE HIGHWAY 128 AND CR 2 (BATTLE AXE) GO EAST ON STATE HIGHWAY 128 FOR APPROX. 0.2 OF A MILE, TURN RIGHT (SOUTH) ON CALICHE LEASE ROAD AND GO 4.2 MILES, TURN LEFT (SOUTHEAST) AND GO APPROX. 1.2 MILES, BEND RIGHT (SOUTH) AND GO APPROX. 0.7 OF A MILE, TURN LEFT (EAST) AND GO APPROX. 2.3 MILES, TURN LEFT (NORTH) ON 2-TRACK ROAD AND GO APPROX. 611' TO BEGIN ROAD SURVEY, GO NORTHEAST APPROX. 96° TO NORTHWEST PAD CORNER FOR THIS LOCATION.

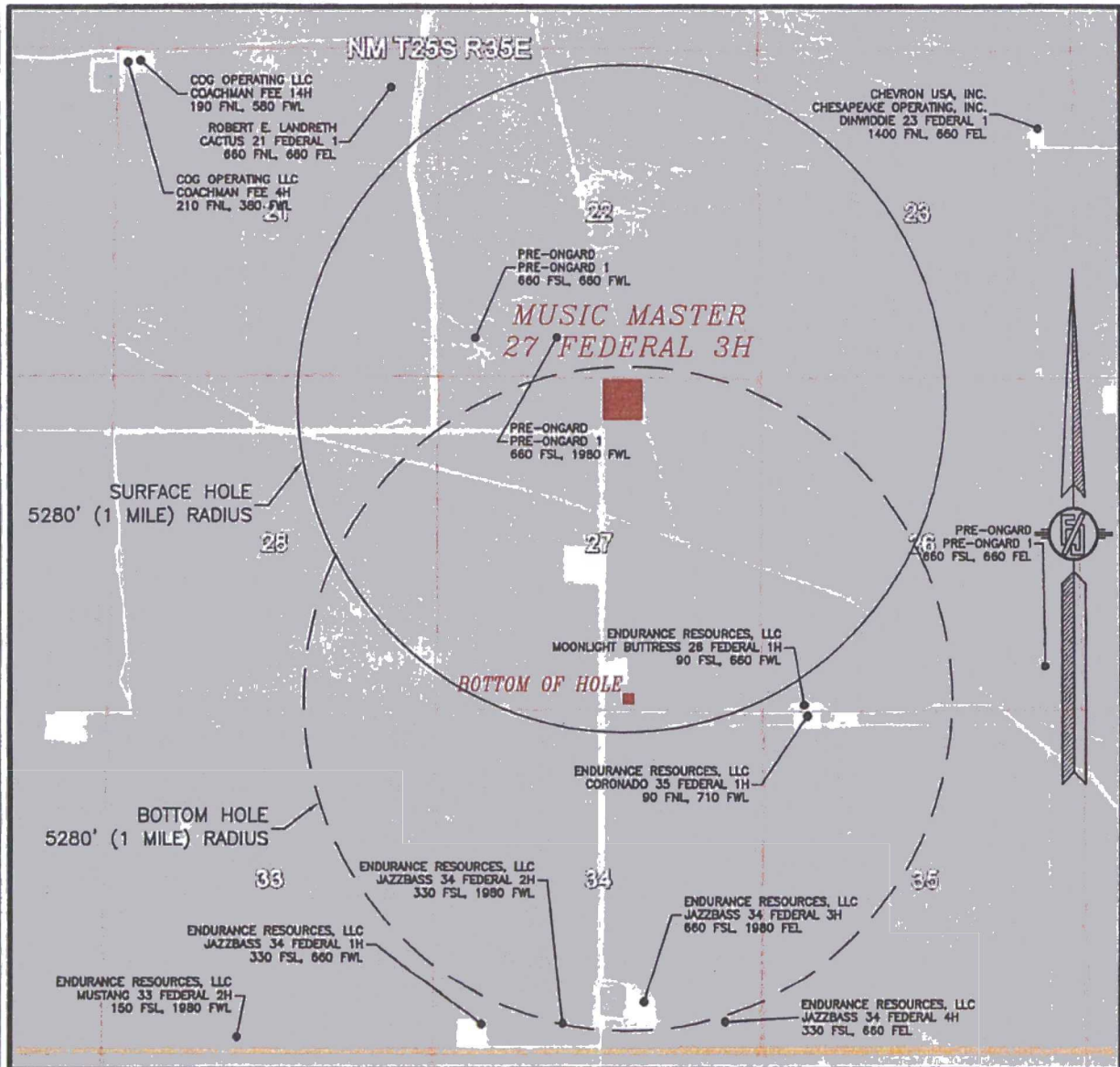
ENDURANCE RESOURCES, LLC
MUSIC MASTER 27 FEDERAL 3H
LOCATED 330 FT. FROM THE NORTH LINE
AND 2250 FT. FROM THE EAST LINE OF
SECTION 27, TOWNSHIP 25 SOUTH,
RANGE 35 EAST, N.M.P.M.
LEA COUNTY, STATE OF NEW MEXICO

DECEMBER 6, 2016

MADRON SURVEYING, INC. 301 SOUTH CANAL (575) 234-3341 CARLSBAD, NEW MEXICO

SURVEY NO. 3506E

SECTION 27, TOWNSHIP 25 SOUTH, RANGE 35 EAST, N.M.P.M.
LEA COUNTY, STATE OF NEW MEXICO
AERIAL PHOTO



NOT TO SCALE
AERIAL PHOTO:
GOOGLE EARTH
FEBRUARY 2014

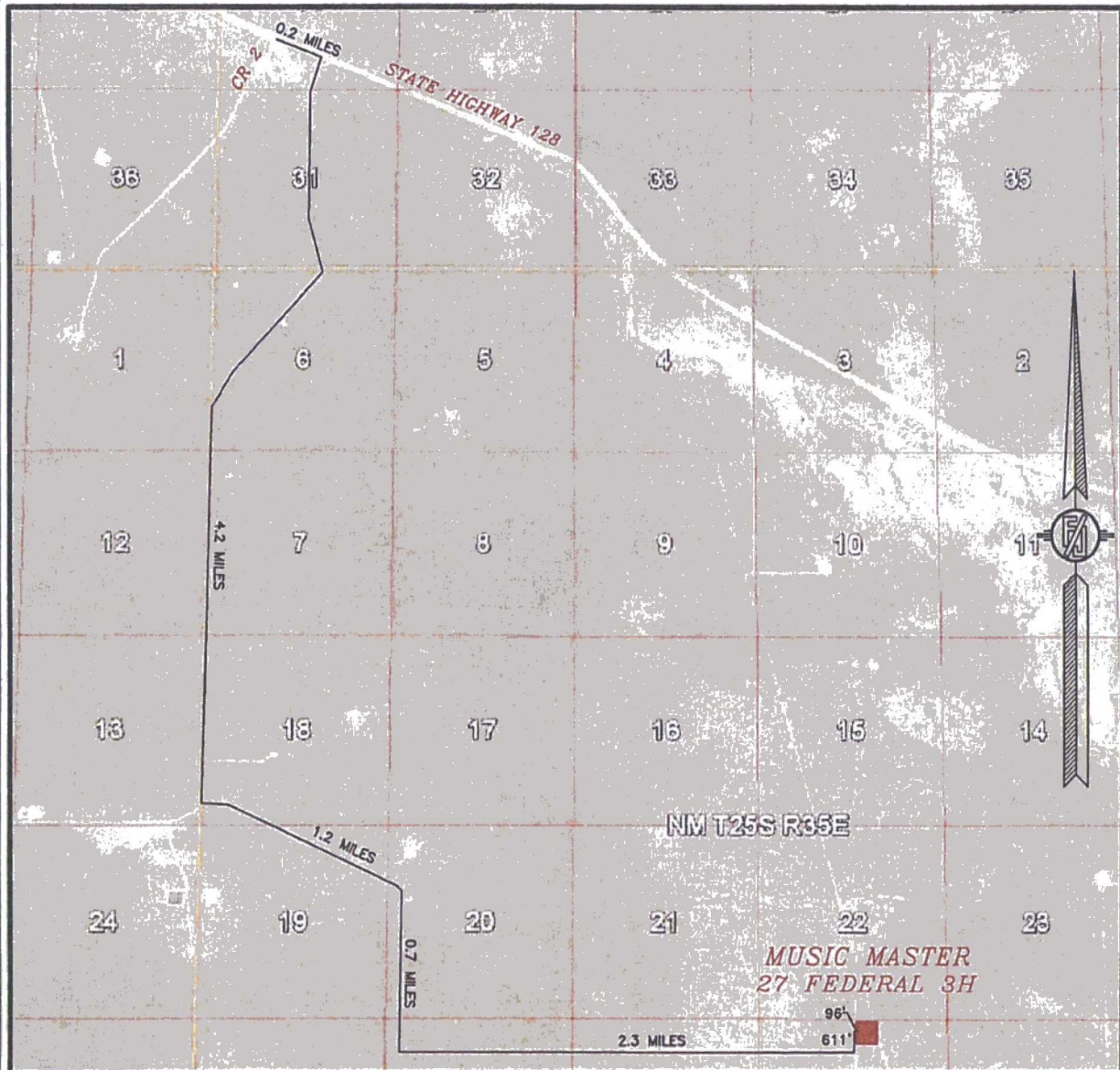
**ENDURANCE RESOURCES, LLC
MUSIC MASTER 27 FEDERAL 3H**
LOCATED 330 FT. FROM THE NORTH LINE
AND 2250 FT. FROM THE EAST LINE OF
SECTION 27, TOWNSHIP 25 SOUTH,
RANGE 35 EAST, N.M.P.M.
LEA COUNTY, STATE OF NEW MEXICO

DECEMBER 6, 2016

SURVEY NO. 3506E

MADRON SURVEYING, INC. 301 SOUTH CANAL (575) 234-3341 CARLSBAD, NEW MEXICO

SECTION 27, TOWNSHIP 25 SOUTH, RANGE 35 EAST, N.M.P.M.
LEA COUNTY, STATE OF NEW MEXICO
ACCESS AERIAL ROUTE MAP



NOT TO SCALE
AERIAL PHOTO:
GOOGLE EARTH
FEBRUARY 2014

ENDURANCE RESOURCES, LLC
MUSIC MASTER 27 FEDERAL 3H
LOCATED 330 FT. FROM THE NORTH LINE
AND 2250 FT. FROM THE EAST LINE OF
SECTION 27, TOWNSHIP 25 SOUTH,
RANGE 35 EAST, N.M.P.M.
LEA COUNTY, STATE OF NEW MEXICO

DECEMBER 6, 2016

SURVEY NO. 3506E

MADRON SURVEYING, INC. 301 SOUTH CANAL (575) 234-3341 CARLSBAD, NEW MEXICO