

District I  
1625 N. French Dr., Hobbs, NM 88240  
Phone: (575) 393-6161 Fax: (575) 393-0720  
District II  
811 S. First St., Artesia, NM 88210  
Phone: (575) 748-1283 Fax: (575) 748-9720  
District III  
1000 Rio Brazos Road, Aztec, NM 87410  
Phone: (505) 334-6178 Fax: (505) 334-6170  
District IV  
1220 S. St. Francis Dr., Santa Fe, NM 87505  
Phone: (505) 476-3460 Fax: (505) 476-3462

State of New Mexico  
Energy, Minerals & Natural Resources Department  
OIL CONSERVATION DIVISION  
1220 South St. Francis Dr.  
Santa Fe, NM 87505

Form C-102  
Revised August 1, 2011  
Submit one copy to appropriate  
District Office

☐ AMENDED REPORT

WELL LOCATION AND ACREAGE DEDICATION PLAT

<sup>1</sup> API Number 30-025- <b>43336</b>	<sup>2</sup> Pool Code 43329	<sup>3</sup> Pool Name Maljamar, Grayburg, San Andres
<sup>4</sup> Property Code <b>31422</b>	<sup>5</sup> Property Name MCA UNIT	<sup>6</sup> Well Number 561
<sup>7</sup> OGRID No. 217817	<sup>8</sup> Operator Name ConocoPhillips Company	<sup>9</sup> Elevation 3965.6'

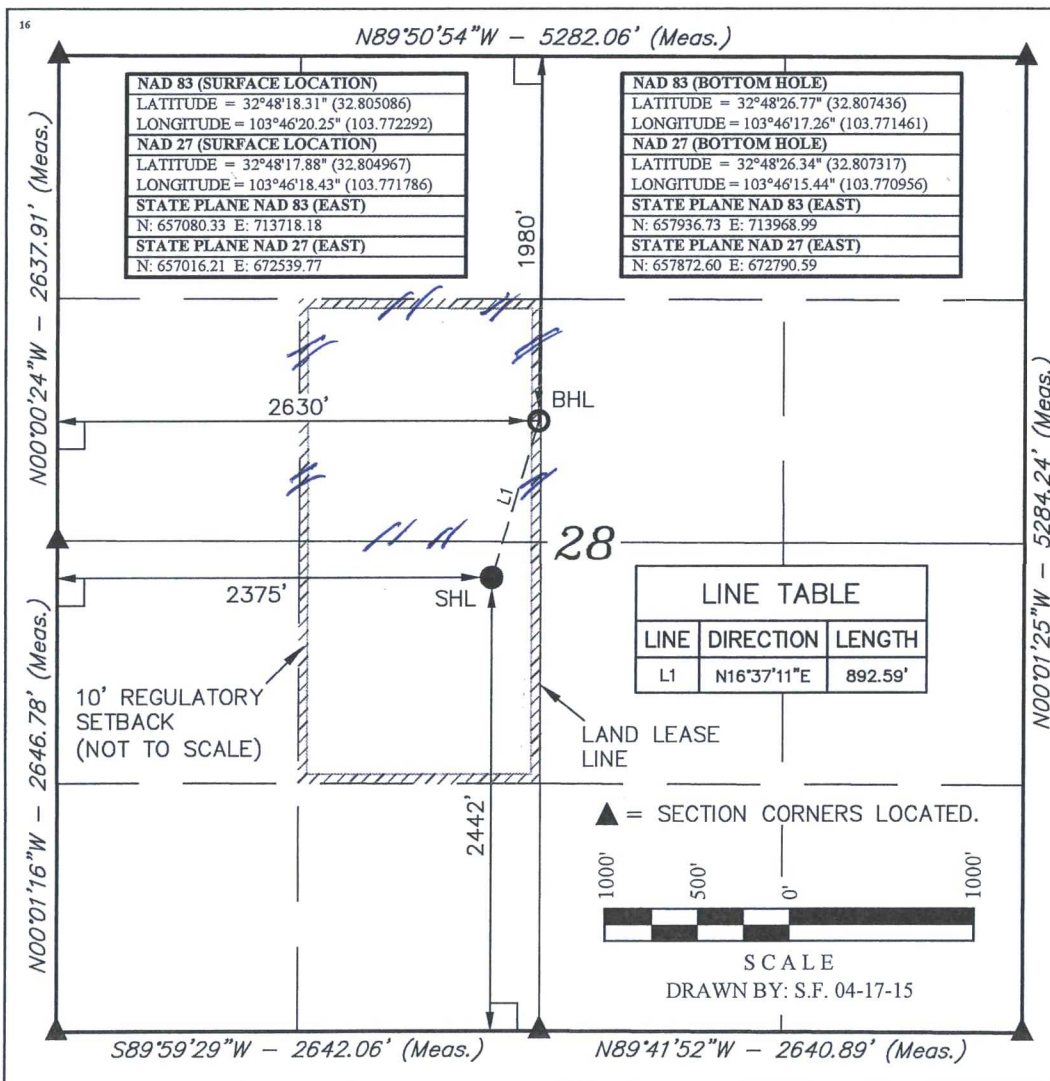
<sup>10</sup> Surface Location

UL or lot no.	Section	Township	Range	Lot Idn	Feet from the	North/South line	Feet from the	East/West line	County
K	28	17S	32E		2442	SOUTH	2375	WEST	LEA

<sup>11</sup> Bottom Hole Location If Different From Surface

UL or lot no.	Section	Township	Range	Lot Idn	Feet from the	North/South line	Feet from the	East/West line	County
F		17S	32E		1980	NORTH	2630	WEST	LEA
<sup>12</sup> Dedicated Acres <b>80 40</b>	<sup>13</sup> Joint or Infill	<sup>14</sup> Consolidation Code	<sup>15</sup> Order No.						

No allowable will be assigned to this completion until all interests have been consolidated or a non-standard unit has been approved by the division.



<sup>17</sup> OPERATOR CERTIFICATION

I hereby certify that the information contained herein is true and complete to the best of my knowledge and belief, and that this organization either owns a working interest or unleased mineral interest in the land including the proposed bottom hole location or has a right to drill this well at this location pursuant to a contract with an owner of such a mineral or working interest, or to a voluntary pooling agreement or a compulsory pooling order heretofore entered by the division.

*Susan B. Maunder* 6/26/15  
Signature Date

Susan B. Maunder  
Printed Name

Susan.B.Maunder@cop.com  
E-mail Address

<sup>18</sup> SURVEYOR CERTIFICATION

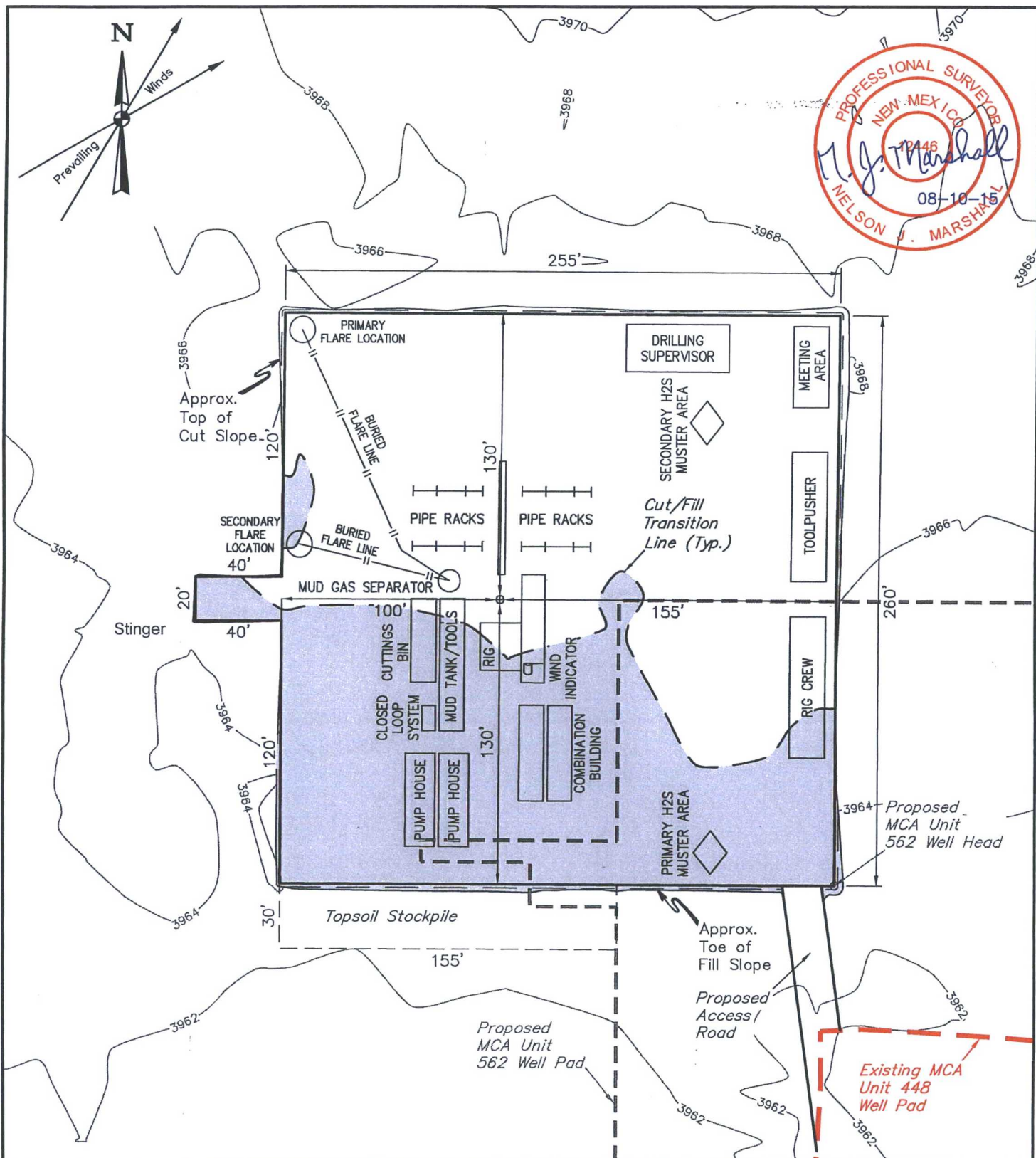
I hereby certify that the well location shown on this plat was plotted from field notes of actual surveys made by me or under my supervision, and that the same is true and correct to the best of my belief.

April 10, 2015

Date of Survey  
Signature and Seal of Professional Surveyor:

*Nelson J. Marshall*  
PROFESSIONAL SURVEYOR  
NEW MEXICO  
12446  
Nelson J. Marshall  
04-30-15

Certificate Number:



#### NOTES:

- Contours shown at 2' intervals.
- May have a different number of pump houses and combination buildings.
- Flare may not be needed depending on rig used.

**ConocoPhillips Company**

**MCA UNIT 561**  
**SECTION 28, T17S, R32E, N.M.P.M.**  
**2442' FSL 2375' FWL**  
**LEA COUNTY, NEW MEXICO**

DRAWN BY: S.F.

DATE DRAWN: 04-17-15

SCALE: 1" = 60'

REVISED: 08-07-15 H.W.

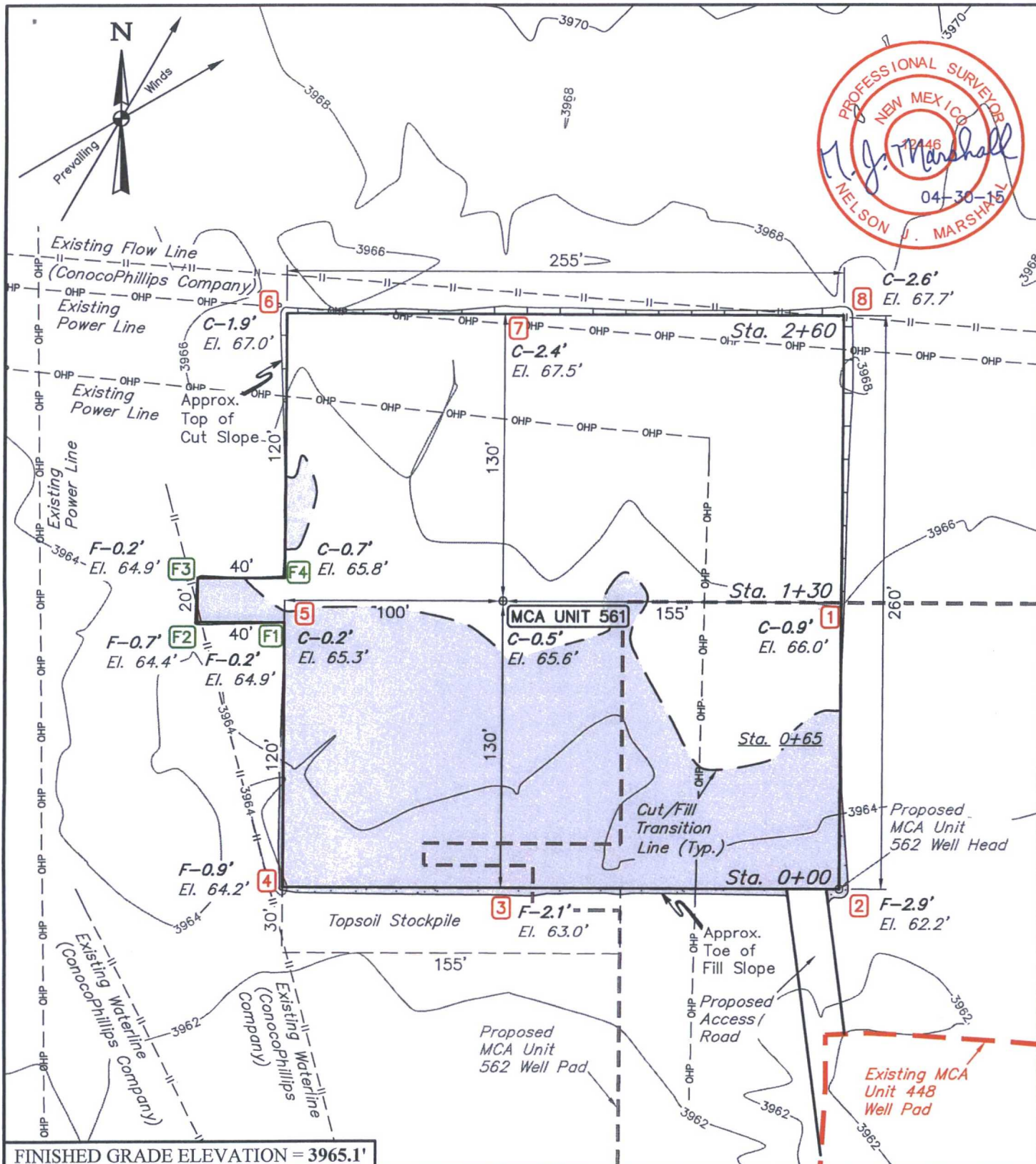
**TYPICAL RIG LAYOUT**

**FIGURE #3**



**UELS, LLC**  
 Corporate Office \* 85 South 200 East  
 Vernal, UT 84078 \* (435) 789-1017





## ConocoPhillips Company

**MCA UNIT 561**  
**SECTION 28, T17S, R32E, N.M.P.M.**  
**2442' FSL 2375' FWL**  
**LEA COUNTY, NEW MEXICO**

DRAWN BY: S.F.

DATE DRAWN: 04-17-15

SCALE: 1" = 60'

REVISED: 00-00-00

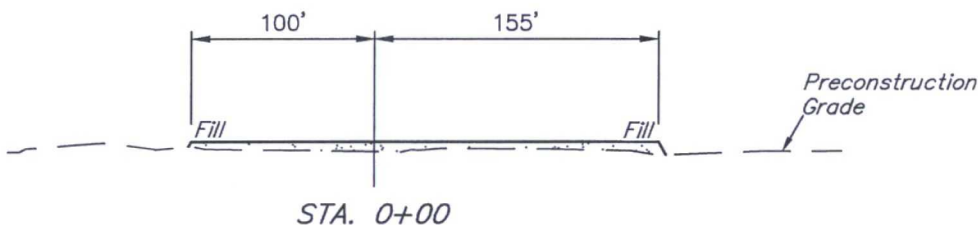
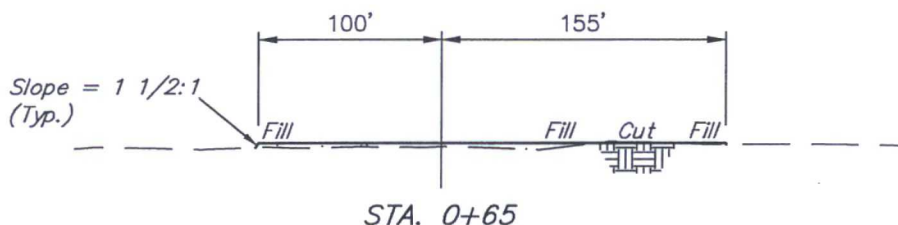
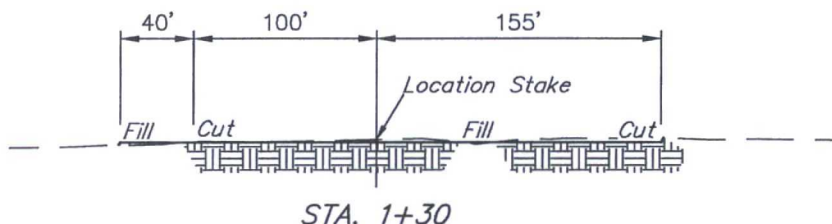
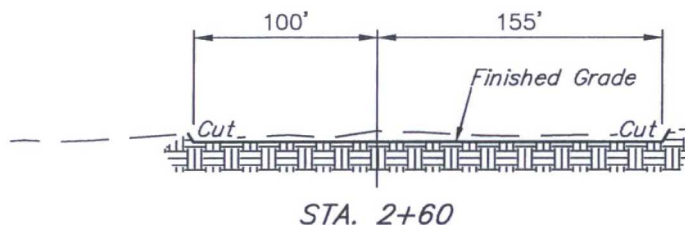
**LOCATION LAYOUT**

**FIGURE #1**



**UELS, LLC**  
Corporate Office \* 85 South 200 East  
Vernal, UT 84078 \* (435) 789-1017

1" = 40'  
X-Section  
Scale  
1" = 100'



APPROXIMATE EARTHWORK QUANTITIES	
(3") TOPSOIL STRIPPING	640 Cu. Yds.
REMAINING LOCATION	1,290 Cu. Yds.
<b>TOTAL CUT</b>	<b>1,930 Cu. Yds.</b>
<b>FILL</b>	<b>1,290 Cu. Yds.</b>
EXCESS MATERIAL	640 Cu. Yds.
TOPSOIL	640 Cu. Yds.
<b>EXCESS UNBALANCE</b> (After Interim Rehabilitation)	<b>0 Cu. Yds.</b>

APPROXIMATE SURFACE DISTURBANCE AREAS		
	DISTANCE	ACRES
WELL SITE DISTURBANCE	NA	±1.688
30' WIDE ACCESS ROAD R-O-W DISTURBANCE	±67.55'	±0.047
10' WIDE POWER LINE R-O-W DISTURBANCE	±535.94'	±0.123
<b>TOTAL SURFACE USE AREA</b>		<b>±1.858</b>

#### NOTES:

- Fill quantity includes 5% for compaction.
- Topsoil should not be stripped below finished grade on substructure area.

#### ConocoPhillips Company

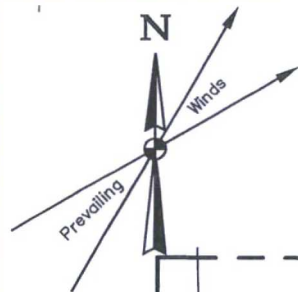
MCA UNIT 561  
SECTION 28, T17S, R32E, N.M.P.M.  
2442' FSL 2375' FWL  
LEA COUNTY, NEW MEXICO



UELS, LLC  
Corporate Office \* 85 South 200 East  
Vernal, UT 84078 \* (435) 789-1017

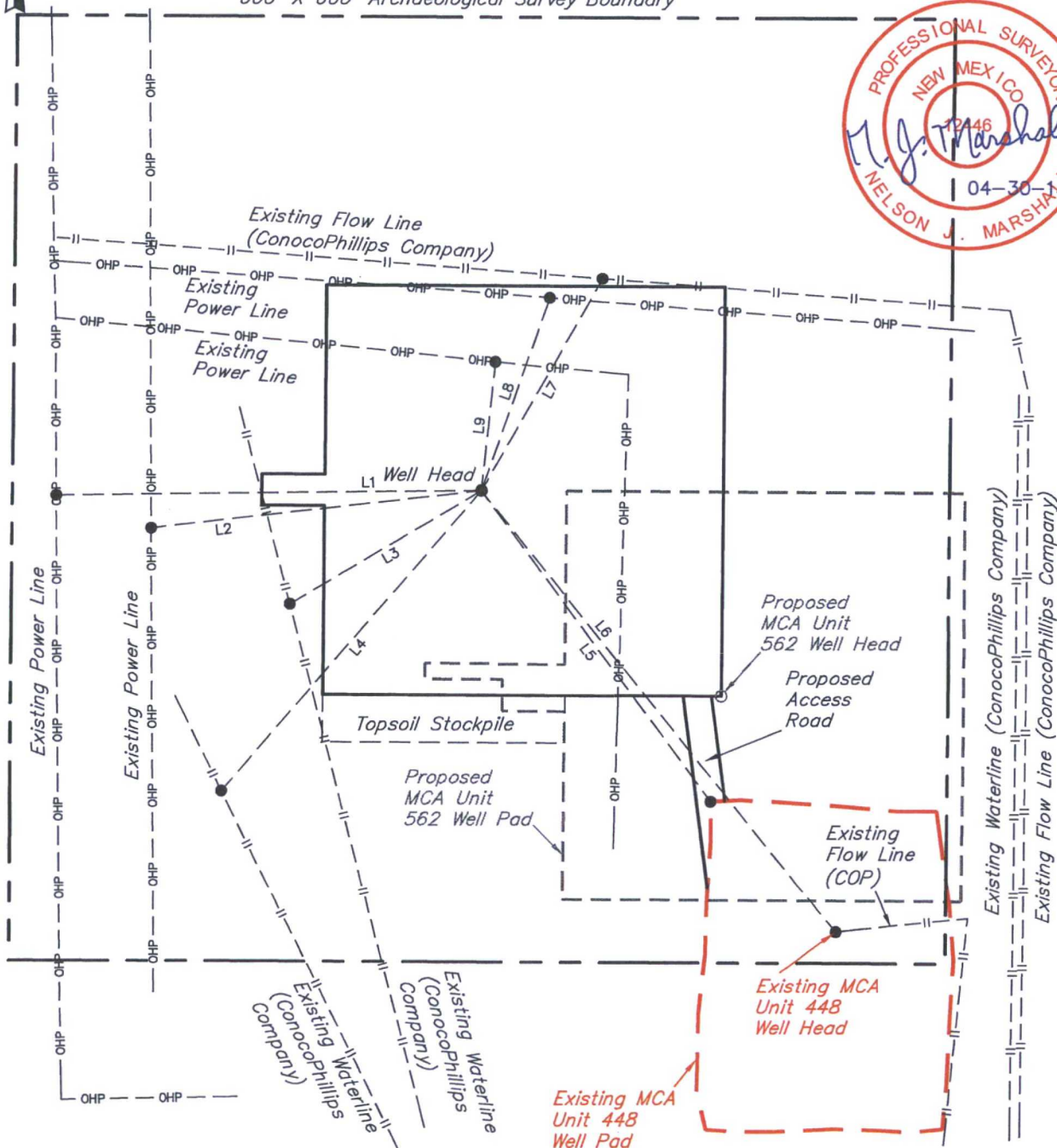
DRAWN BY: S.F.	DATE DRAWN: 04-17-15
SCALE: AS SHOWN	REVISED: 00-00-00
<b>TYPICAL CROSS SECTIONS</b>	<b>FIGURE #2</b>





LINE TABLE			LINE TABLE			LINE TABLE		
LINE	DIRECTION	LENGTH	LINE	DIRECTION	LENGTH	LINE	DIRECTION	LENGTH
L1	S89°W	272'	L4	S41°W	252'	L7	N30°E	155'
L2	S84°W	212'	L5	S37°E	247'	L8	N19°E	130'
L3	S59°W	141'	L6	S39°E	362'	L9	N06°E	82'

600' X 600' Archaeological Survey Boundary



# NOTES:

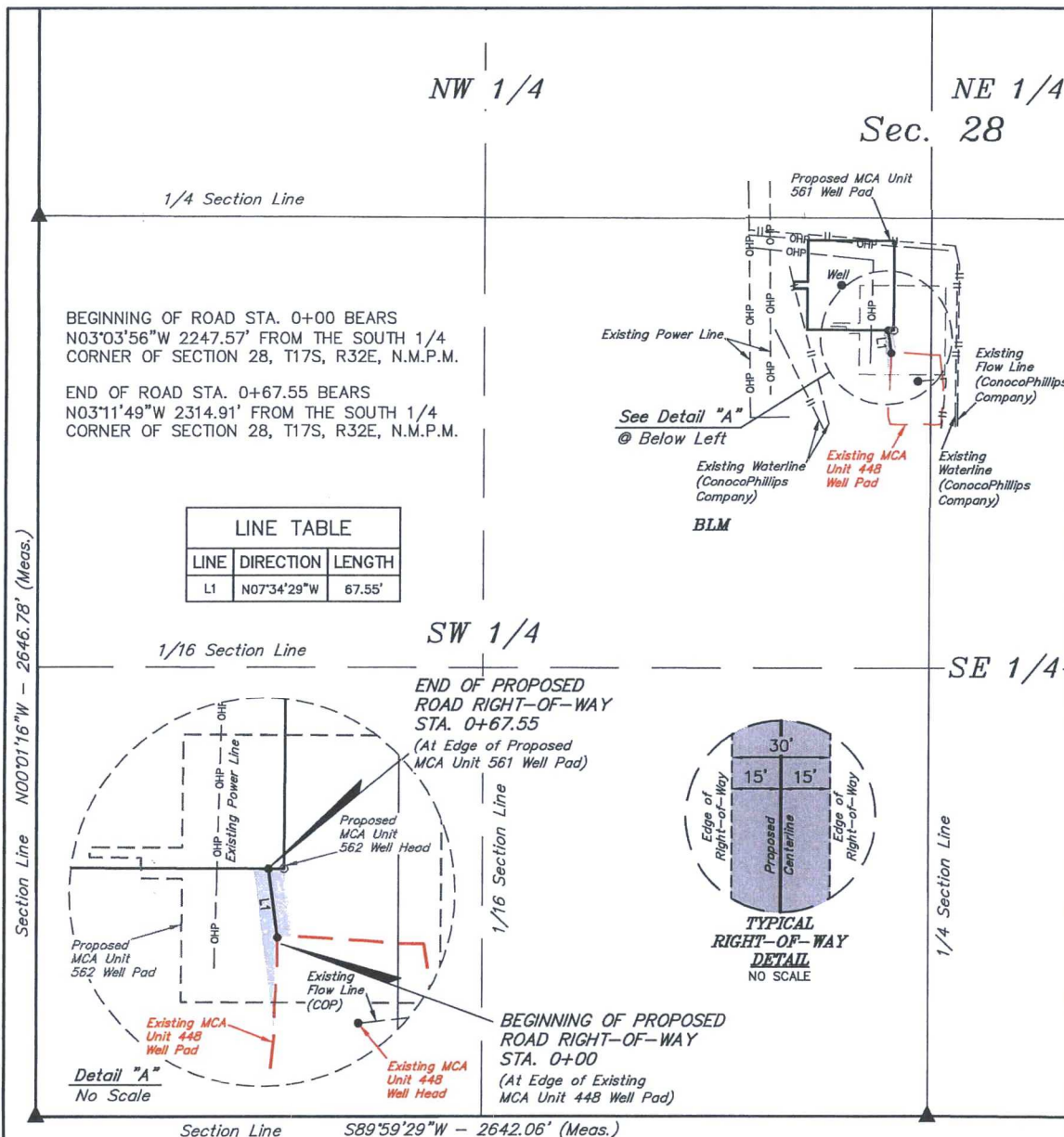
ConocoPhillips Company

MCA UNIT 561  
SECTION 28, T17S, R32E, N.M.P.M.  
2442' FSL 2375' FWL  
LEA COUNTY, NEW MEXICO



UELS, LLC  
Corporate Office \* 85 South 200 East  
Vernal, UT 84078 \* (435) 789-1017

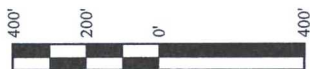
DRAWN BY: S.F.	DATE DRAWN: 04-17-15
SCALE: 1" = 100'	REVISED: 00-00-00
ARCHAEOLOGICAL SURVEY BOUNDARY	FIGURE #5



### ROAD RIGHT-OF-WAY DESCRIPTION

A 30' WIDE RIGHT-OF-WAY 15' ON EACH SIDE OF THE FOLLOWING DESCRIBED CENTERLINE.

BEGINNING AT A POINT IN THE NE 1/4 SW 1/4 OF SECTION 28, T17S, R32E, N.M.P.M., WHICH BEARS N03°03'56"W 2247.57' FROM THE SOUTH 1/4 CORNER OF SAID SECTION 28, THENCE N07°34'29"W 67.55' TO A POINT IN THE NE 1/4 SW 1/4 OF SAID SECTION 28, WHICH BEARS N03°11'49"W 2314.91' FROM THE SOUTH 1/4 CORNER OF SAID SECTION 28. THE SIDE LINES OF SAID DESCRIBED RIGHT-OF-WAY BEING SHORTENED OR ELONGATED TO MEET THE GRANTOR'S PROPERTY LINES. BASIS OF BEARINGS IS A G.P.S. OBSERVATION. CONTAINS 0.047 ACRES MORE OR LESS.



ACREAGE / LENGTH TABLE

	OWNERSHIP	FEET	RODS	ACRES
(SEC. 28 SW 1/4)	BLM	67.55	4.09	0.047

▲ = SECTION CORNERS LOCATED.

#### NOTES:

- The maximum grade of existing ground for the proposed access road is  $\pm 1.8\%$ .

CERTIFICATE  
THIS IS TO CERTIFY THAT THE ABOVE PLAT WAS PREPARED FROM FIELD NOTES OF ACTUAL SURVEYS MADE BY ME OR UNDER MY SUPERVISION AND THAT THE SAME ARE TRUE AND CORRECT TO THE BEST OF MY KNOWLEDGE AND BELIEF.

REGISTERED LAND SURVEYOR  
REGISTRATION NO. 12446  
STATE OF NEW MEXICO

04-30-15

### ConocoPhillips Company

MCA UNIT 561  
SECTION 28, T17S, R32E, N.M.P.M.  
LEA COUNTY, NEW MEXICO

DRAWN BY: S.F. DATE DRAWN: 04-17-15  
SCALE: 1" = 400' REVISED: 00-00-00

ACCESS ROAD R-O-W



UELS, LLC  
Corporate Office \* 85 South 200 East  
Vernal, UT 84078 \* (435) 789-1017





### INJECTION LINE RIGHT-OF-WAY DESCRIPTION

A 20' WIDE RIGHT-OF-WAY 10' ON EACH SIDE OF THE FOLLOWING DESCRIBED CENTERLINE.

BEGINNING AT A POINT IN THE NE 1/4 NW 1/4 OF SECTION 28, T17S, R32E, N.M.P.M., WHICH BEARS S81°51'50"E 1666.06' FROM THE NORTHWEST CORNER OF SAID SECTION 28, S85°52'10"W 4.90'; THENCE S47°33'39"W 7.57'; THENCE S06°34'02"W 146.73'; THENCE S06°32'16"W 165.07'; THENCE S41°27'32"E 6.70'; THENCE S71°32'55"E 69.75'; THENCE S32°23'52"E 48.01'; THENCE N86°39'53"E 175.90'; THENCE S40°46'27"E 6.79'; THENCE S01°16'38"W 803.40'; THENCE S53°09'51"E 117.65'; THENCE S00°02'23"W 1183.08'; THENCE S40°16'17"E 7.23'; THENCE S87°44'49"E 393.39'; THENCE S52°28'18"E 16.19'; THENCE S00°20'19"W 11.00', WHICH BEARS S88°12'03"W 2366.43' FROM THE WEST 1/4 CORNER OF SAID SECTION 28. THE SIDE LINES OF SAID DESCRIBED RIGHT-OF-WAY BEING SHORTENED OR ELONGATED TO MEET THE GRANTOR'S PROPERTY LINES. BASIS OF BEARINGS IS A G.P.S. OBSERVATION. CONTAINS 1.452 ACRES MORE OR LESS.

BEGINNING OF INJECTION LINE STA. 0+00  
BEARS S81°51'50"E 1666.06' FROM THE  
NORTHWEST CORNER OF SECTION 28, T17S,  
R32E, N.M.P.M.

END OF INJECTION LINE STA. 31+63.34 BEARS  
S88°12'03"E 2366.43' FROM THE WEST 1/4  
CORNER OF SECTION 28, T17S, R32E, N.M.P.M.

#### CERTIFICATE

THIS IS TO CERTIFY THAT THE ABOVE PLAT WAS PREPARED FROM FIELD NOTES OF ACTUAL SURVEYS MADE BY ME OR UNDER MY SUPERVISION AND THAT THE SAME ARE TRUE AND CORRECT TO THE BEST OF MY KNOWLEDGE AND BELIEF.

REGISTERED LAND SURVEYOR  
REGISTRATION NO. 12446  
STATE OF NEW MEXICO

06-26-15  
Sheet 1 of 2

#### ConocoPhillips Company

MCA UNIT 561  
SECTION 28, T17S, R32E, N.M.P.M.  
LEA COUNTY, NEW MEXICO

DRAWN BY: B.A.	DATE DRAWN: 06-23-15
SCALE: 1" = 400'	REVISED: 00-00-00

#### INJECTION LINE R-O-W



UELS, LLC  
Corporate Office \* 85 South 200 East  
Vernal, UT 84078 \* (435) 789-1017



[illegible]

<b><i>ACREAGE / LENGTH TABLE</i></b>				
	OWNERSHIP	FEET	RODS	ACRES
(SEC. 28 NW 1/4)	BLM	2709.82	164.23	1.244
(SEC. 28 SW 1/4)	BLM	453.52	27.49	0.208
TOTAL		3163.34	191.72	1.452

**NOTES:**

- Basis of bearing is a G.P.S. observation (Vertical Control Datum: NAVD88)

REGISTERED LAND SURVEYOR  
REGISTRATION NO. 12446  
STATE OF NEW MEXICO

06-26-15  
Sheet 2 of 2

MCA UNIT 561  
SECTION 28, T17S, R32E, N.M.P.M.  
LEA COUNTY, NEW MEXICO

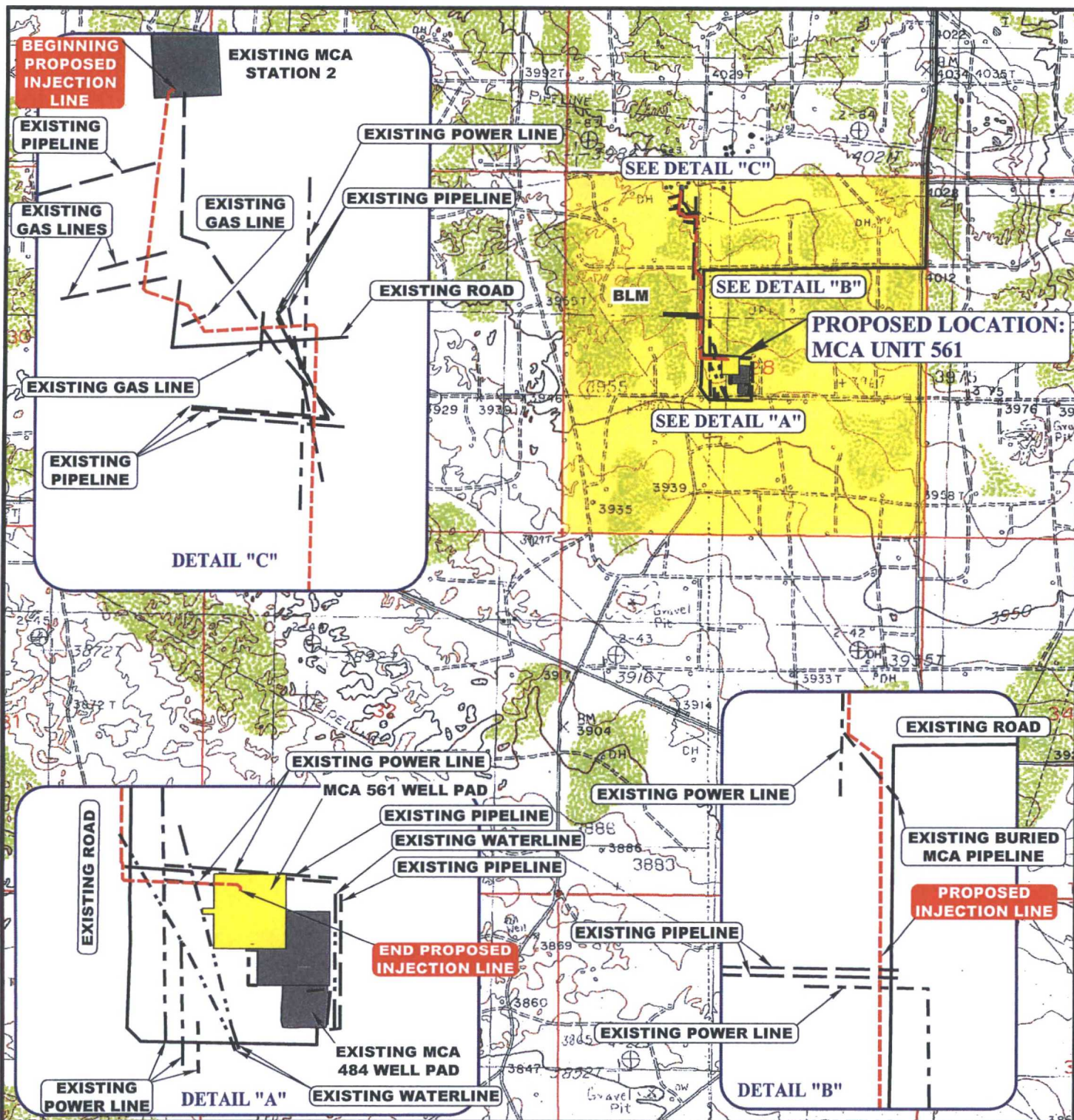
DRAWN BY: B.A.	DATE DRAWN: 06-23-15
SCALE: 1" = 400'	REVISED: 00-00-00

## INJECTION LINE R-O-W



**UELS, LLC**  
Corporate Office \* 85 South 200 East  
Vernal, UT 84078 \* (435) 789-1017





**APPROXIMATE TOTAL INJECTION LINE DISTANCE = 3163' +/-**

NOTE: PARCEL DATA SHOWN HAS BEEN OBTAINED FROM VARIOUS SOURCES AND SHOULD BE USED FOR MAPPING, GRAPHIC AND PLANNING PURPOSES ONLY. NO WARRANTY IS MADE BY UINTAH ENGINEERING AND LAND SURVEYING (UELS) FOR ACCURACY OF THE PARCEL DATA.

**LEGEND:**

	EXISTING ROAD
	PROPOSED ROAD
	PROPOSED INJECTION LINE
	EXISTING WATER LINE
	EXISTING POWER LINE
	EXISTING PIPELINE

**ConocoPhillips Company**

MCA UNIT 561  
SECTION 28, T17S, R32E, N.M.P.M.  
LEA COUNTY, NEW MEXICO

DRAWN BY: Z.H.F.

DATE DRAWN: 06-24-15

SCALE: 1" = 2000'

REVISED: 00-00-00

**INJECTION LINE MAP**

**TOPO D**



**UELS, LLC**  
Corporate Office \* 85 South 200 East  
Vernal, UT 84078 \* (435) 789-1017



## MCA 561 Injector Line

Lat 32°48'18.31"N / Lon 103°46'20.25"W NAD83  
SEC 28 TWN 17S RGE 32E  
LEA Co. NM  
Length of Injection Line 450 Ft.  
Length of Trunkline 2,829 Ft Total

Tie in point with MCA Station 2 –  
2A Injection Header trunk Line

17S32E

TIE IN POINT

Google earth

© 2015 Google

1000 ft

## MCA 561 Injector Line

LEA Co. NM  
SEC 28  
TWN 17S  
RGE 32E

Lat 32°48'18.31"N NAD83  
Lon 103°46'20.25"W NAD83

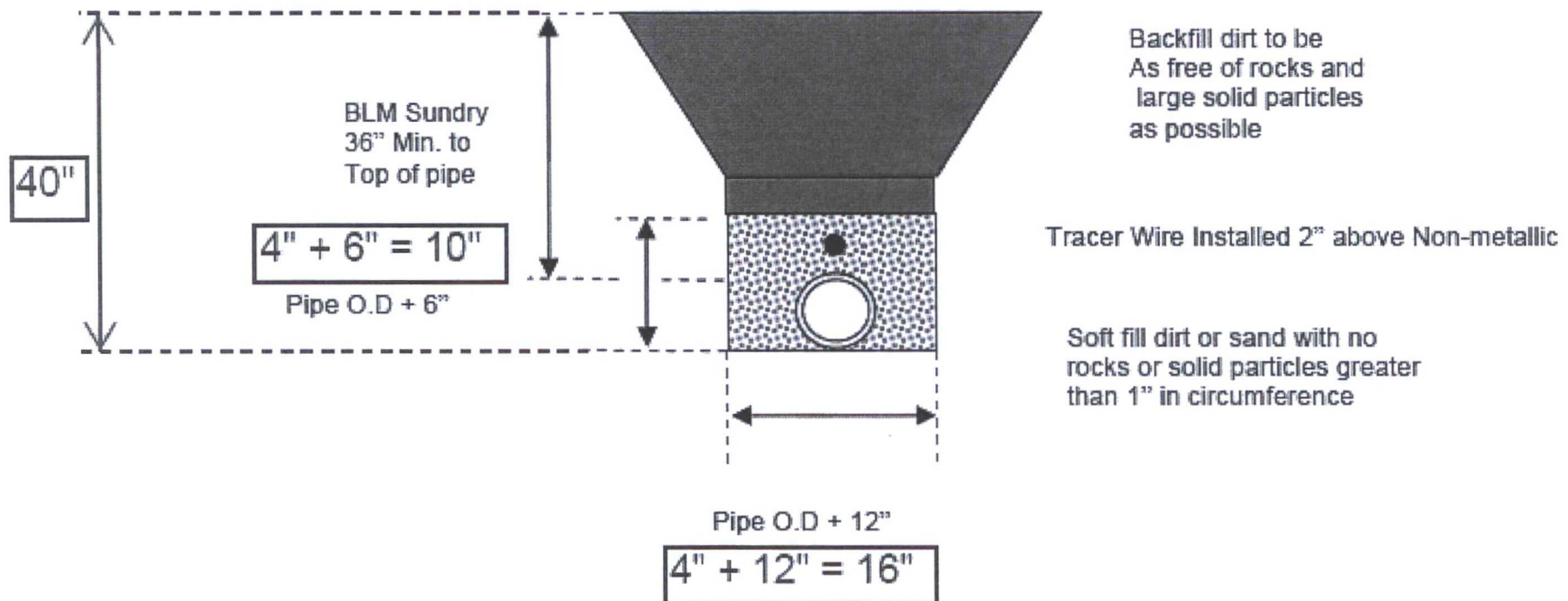
Length of injection line (Red) ~  
450 FT  
Fiberspar Pipe 2-1/2" 2,500 Lb  
Buried in trench 36" Deep

Length of 4-1/2" Trunk line  
(Yellow) 1,449 FT  
(Length of MCA 2 – 2A inj Header  
Portion 1,380 Ft  
Fiberspar Pipe 4-1/2" 2,500 Lb  
Buried in trench 36" Deep  
(Ties into MCA 2 Battery → MCA  
2A Injection Header Trunk Line  
replacement Line that has been  
surveyed but not approved.)

Approximate tie in point location  
at proposed Trunk line (Blue Dot)  
Lat 32°48'18.63"N NAD83  
Lon 103°46'25.47"W NAD 83



Figure D-1 Backfill around Pipe







BEGINNING AT THE INTERSECTION OF U.S. HIGHWAY 82 AND MALJAMAR ROAD/COUNTY ROAD 126, PROCEED IN A SOUTHERLY DIRECTION FROM MALJAMAR, NEW MEXICO ALONG MALJAMAR ROAD/COUNTY ROAD 126 APPROXIMATELY 3.6 MILES TO THE JUNCTION OF THIS ROAD AND AN EXISTING ROAD TO THE WEST; TURN RIGHT AND PROCEED IN A WESTERLY DIRECTION APPROXIMATELY 0.5 MILES TO THE JUNCTION OF THIS ROAD AND AN EXISTING ROAD TO THE NORTH; TURN RIGHT AND PROCEED IN A NORTHERLY DIRECTION APPROXIMATELY 25' TO THE PROPOSED MCA UNIT 562 ON EXISTING MCA UNIT 484 WELL LOCATION AND THE BEGINNING OF THE PROPOSED ACCESS TO THE NORTH. FOLLOW ROAD FLAGS IN A NORTHERLY DIRECTION APPROXIMATELY 68' TO THE PROPOSED LOCATION.

TOTAL DISTANCE FROM MALJAMAR, NEW MEXICO TO THE PROPOSED LOCATION IS APPROXIMATELY 4.1 MILES.

**ConocoPhillips Company**

MCA UNIT 561  
SECTION 28, T17S, R32E, NMPM  
2442' FSL 2375' FWL  
LEA COUNTY, NEW MEXICO

DRAWN BY: B.D.

DATE DRAWN: 04-20-15

REVISED: 00-00-00

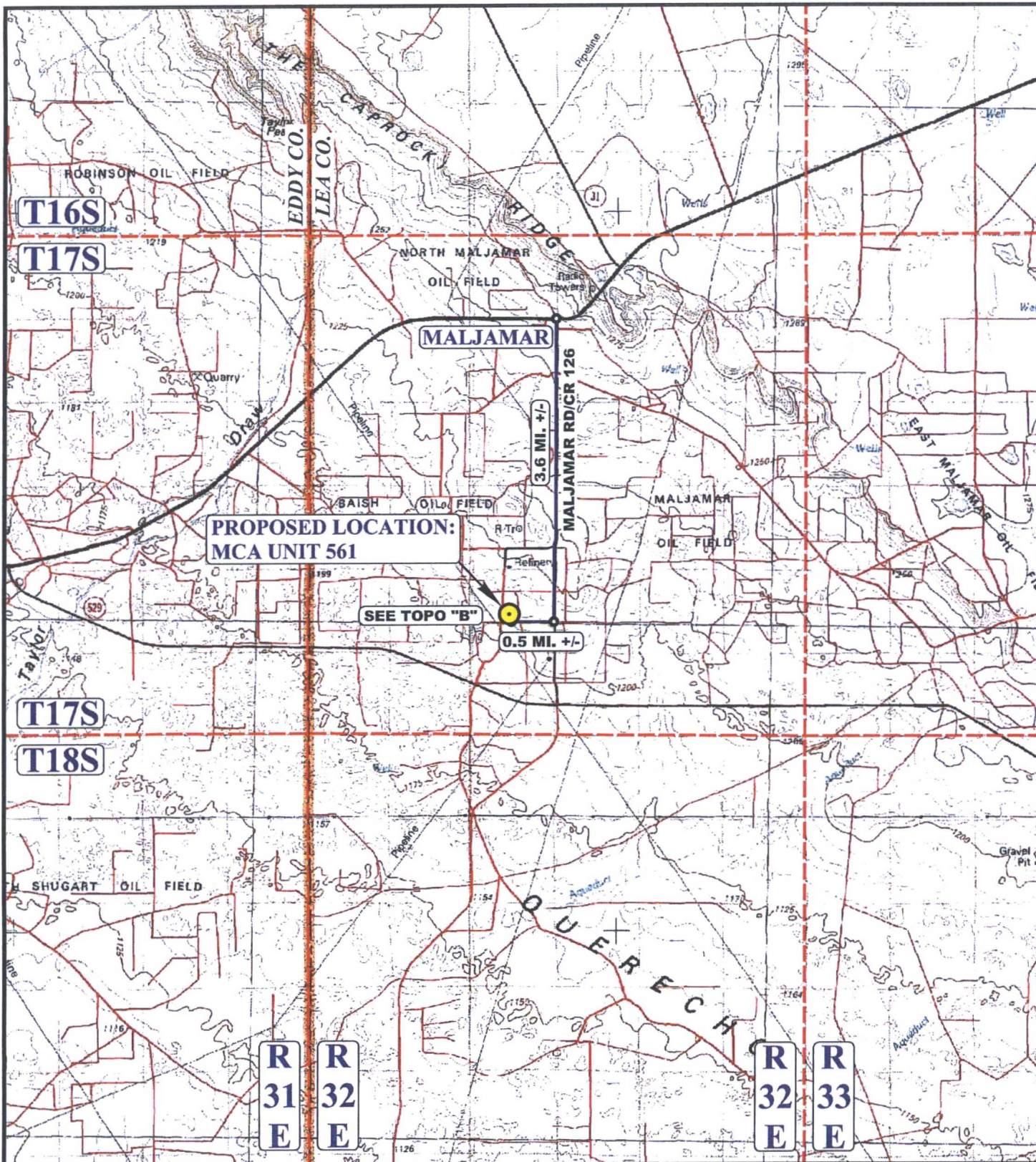
**ROAD DESCRIPTION**



**UELS, LLC**

Corporate Office \* 85 South 200 East  
Vernal, UT 84078 \* (435) 789-1017





**LEGEND:**

**PROPOSED LOCATION**

**ConocoPhillips Company**

**MCA UNIT 561  
SECTION 28, T17S, R32E, NMPM  
2442' FSL 2375' FWL  
LEA COUNTY, NEW MEXICO**

**DRAWN BY: B.D.**

**DATE DRAWN: 04-20-15**

**SCALE: 1:100,000**

**REVISED: 00-00-00**

**ACCESS ROAD MAP**

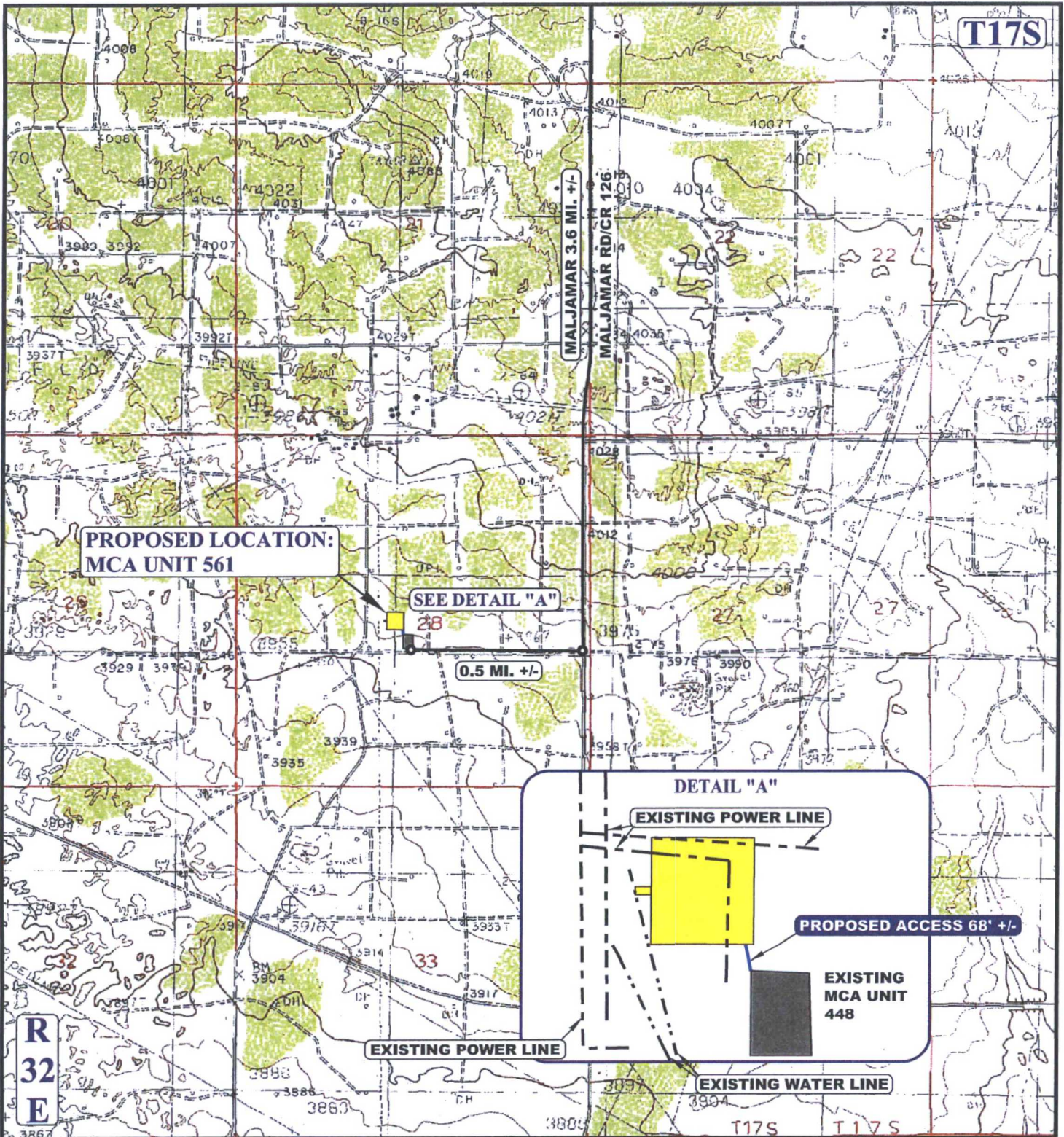
**TOPO A**



**UELS, LLC**  
Corporate Office \* 85 South 200 East  
Vernal, UT 84078 \* (435) 789-1017







NOTE: PARCEL DATA SHOWN HAS BEEN OBTAINED FROM VARIOUS SOURCES AND SHOULD BE USED FOR MAPPING, GRAPHIC AND PLANNING PURPOSES ONLY. NO WARRANTY IS MADE BY UINTAH ENGINEERING AND LAND SURVEYING (UELS) FOR ACCURACY OF THE PARCEL DATA.

- LEGEND:**
- EXISTING ROAD
  - - - - - PROPOSED ROAD
  - - - - - EXISTING POWER LINE
  - - - - - EXISTING WATER LINE



**UELS, LLC**  
Corporate Office \* 85 South 200 East  
Vernal, UT 84078 \* (435) 789-1017



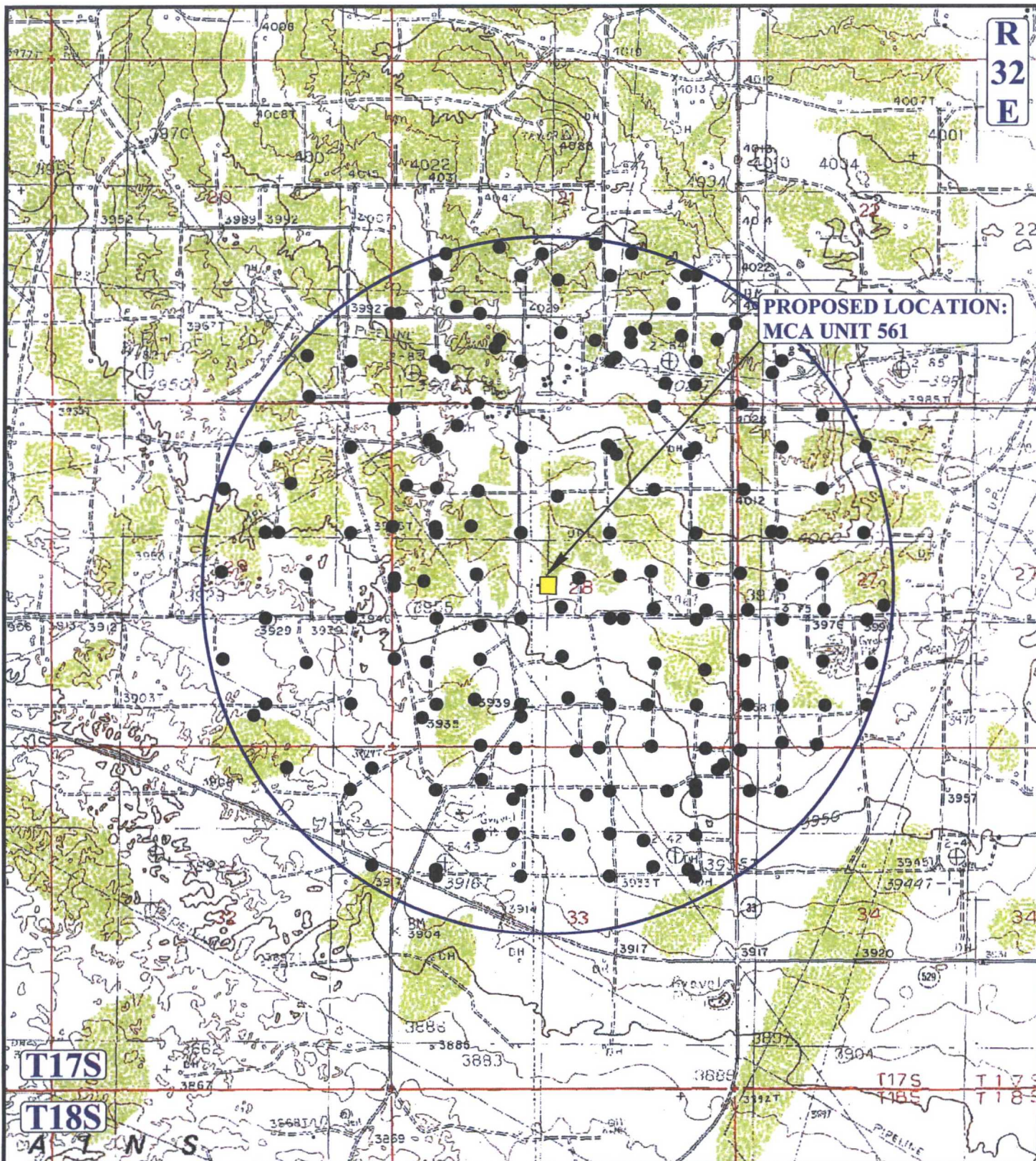
**ConocoPhillips Company**

MCA UNIT 561  
SECTION 28, T17S, R32E, NMPM  
2442' FSL 2375' FWL  
LEA COUNTY, NEW MEXICO

DRAWN BY: B.D.	DATE DRAWN: 04-20-15
SCALE: 1" = 2000'	REVISED: 00-00-00

**ACCESS ROAD MAP** **TOPO B**





# **LEGEND:**

- PRODUCING WELLS

## **ConocoPhillips Company**

MCA UNIT 561  
SECTION 28, T17S, R32E, NMPM  
2442' FSL 2375' FWL  
LEA COUNTY, NEW MEXICO

DRAWN BY: B.D.

DATE DRAWN: 04-20-15

SCALE: 1" = 2000'

REVISED: 00-00-00

**WELL PROXIMITY MAP**

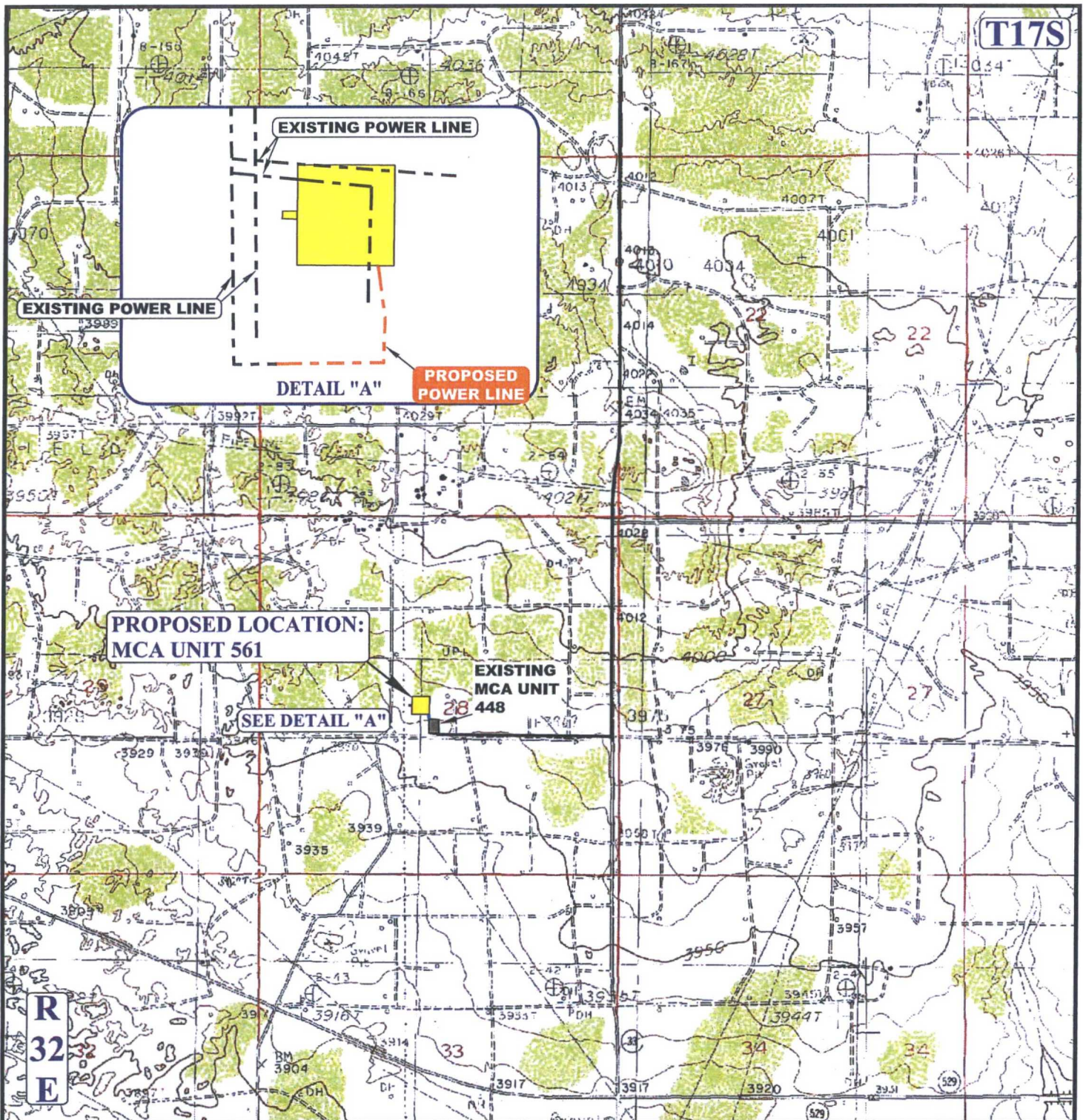
**TOPO C**



**UELS, LLC**  
Corporate Office \* 85 South 200 East  
Vernal, UT 84078 \* (435) 789-1017







**APPROXIMATE TOTAL POWER LINE DISTANCE = 536' +/-**

NOTE: PARCEL DATA SHOWN HAS BEEN OBTAINED FROM VARIOUS SOURCES AND SHOULD BE USED FOR MAPPING, GRAPHIC AND PLANNING PURPOSES ONLY. NO WARRANTY IS MADE BY UINTEH ENGINEERING AND LAND SURVEYING (UELS) FOR ACCURACY OF THE PARCEL DATA.

**LEGEND:**

- EXISTING ROAD
- PROPOSED ROAD
- PROPOSED POWER LINE
- EXISTING POWER LINE
- EXISTING PIPELINE



**UELS, LLC**  
Corporate Office \* 85 South 200 East  
Vernal, UT 84078 \* (435) 789-1017



**ConocoPhillips Company**

MCA UNIT 561  
SECTION 28, T17S, R32E, NMPM  
2442' FSL 2375' FWL  
LEA COUNTY, NEW MEXICO

DRAWN BY: B.D.  
SCALE: 1" = 2000'

DATE DRAWN: 04-20-15  
REVISED: 00-00-00

**POWER LINE MAP**

**TOPO E**



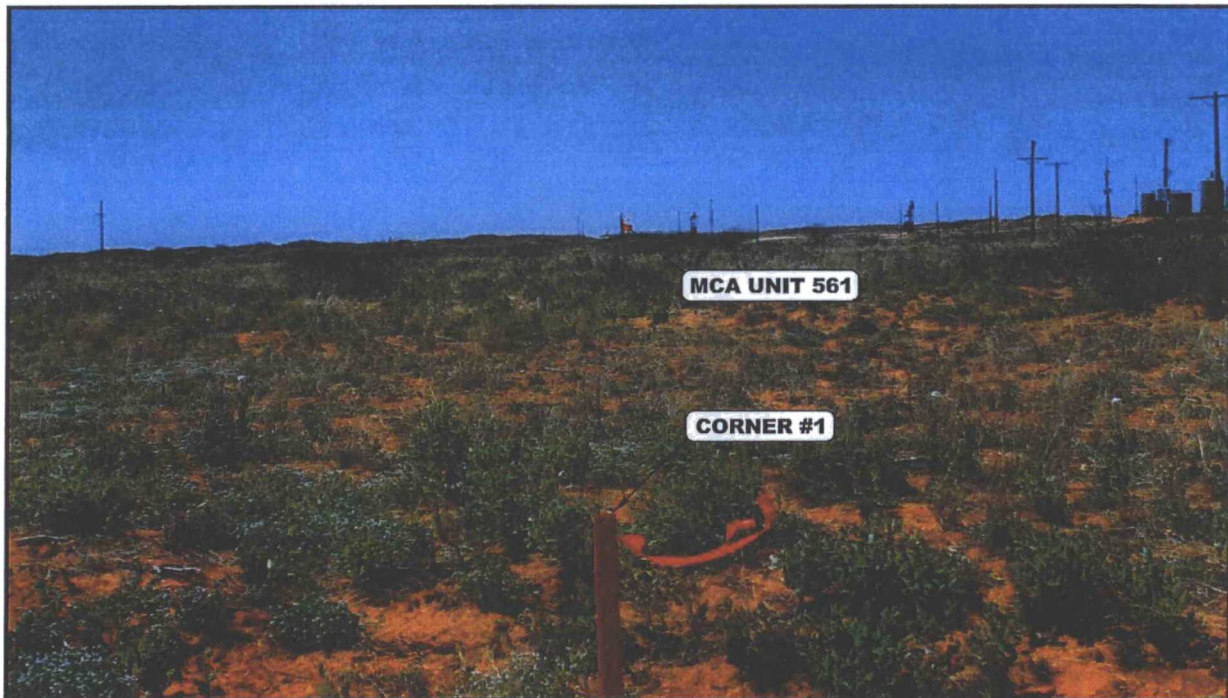


PHOTO: VIEW FROM CORNER #1 TO LOCATION STAKE

CAMERA ANGLE: WESTERLY



PHOTO: VIEW OF END OF PROPOSED ACCESS

CAMERA ANGLE: NORTHERLY

### ConocoPhillips Company

MCA UNIT 561  
SECTION 28, T17S, R32E, NMPM  
2442' FSL 2375' FWL  
LEA COUNTY, NEW MEXICO



**UELS, LLC**  
Corporate Office \* 85 South 200 East  
Vernal, UT 84078 \* (435) 789-1017

DRAWN BY: B.D.	DATE DRAWN: 04-20-15
TAKEN BY: J.V.	REVISED: 00-00-00

**LOCATION PHOTOS**

**PHOTO**