

District I
1625 N. French Dr., Hobbs, NM 88240
Phone: (575) 393-6161 Fax: (575) 393-0720
District II
811 S. First St., Artesia, NM 88210
Phone: (575) 748-1283 Fax: (575) 748-3720
District III
1000 Rio Brazos Road, Aztec, NM 87410
Phone: (505) 334-6178 Fax: (505) 334-6170
District IV
1220 S. St. Francis Dr., Santa Fe, NM 87505
Phone: (505) 476-3460 Fax: (505) 476-3462

State of New Mexico
Energy, Minerals & Natural Resources Department
OIL CONSERVATION DIVISION
1220 South St. Francis Dr.
Santa Fe, NM 87505

Form C-102
Revised August 1, 2011
Submit one copy to appropriate
District Office

☐ AMENDED REPORT

WELL LOCATION AND ACREAGE DEDICATION PLAT

¹ API Number 30-025- 43537	² Pool Code 43329	³ Pool Name Maljamar, Grayburg, San Andres
⁴ Property Code 31422	⁵ Property Name MCA UNIT	⁶ Well Number 564
⁷ OGRID No. 217817	⁸ Operator Name ConocoPhillips Company	⁹ Elevation 3934.6'

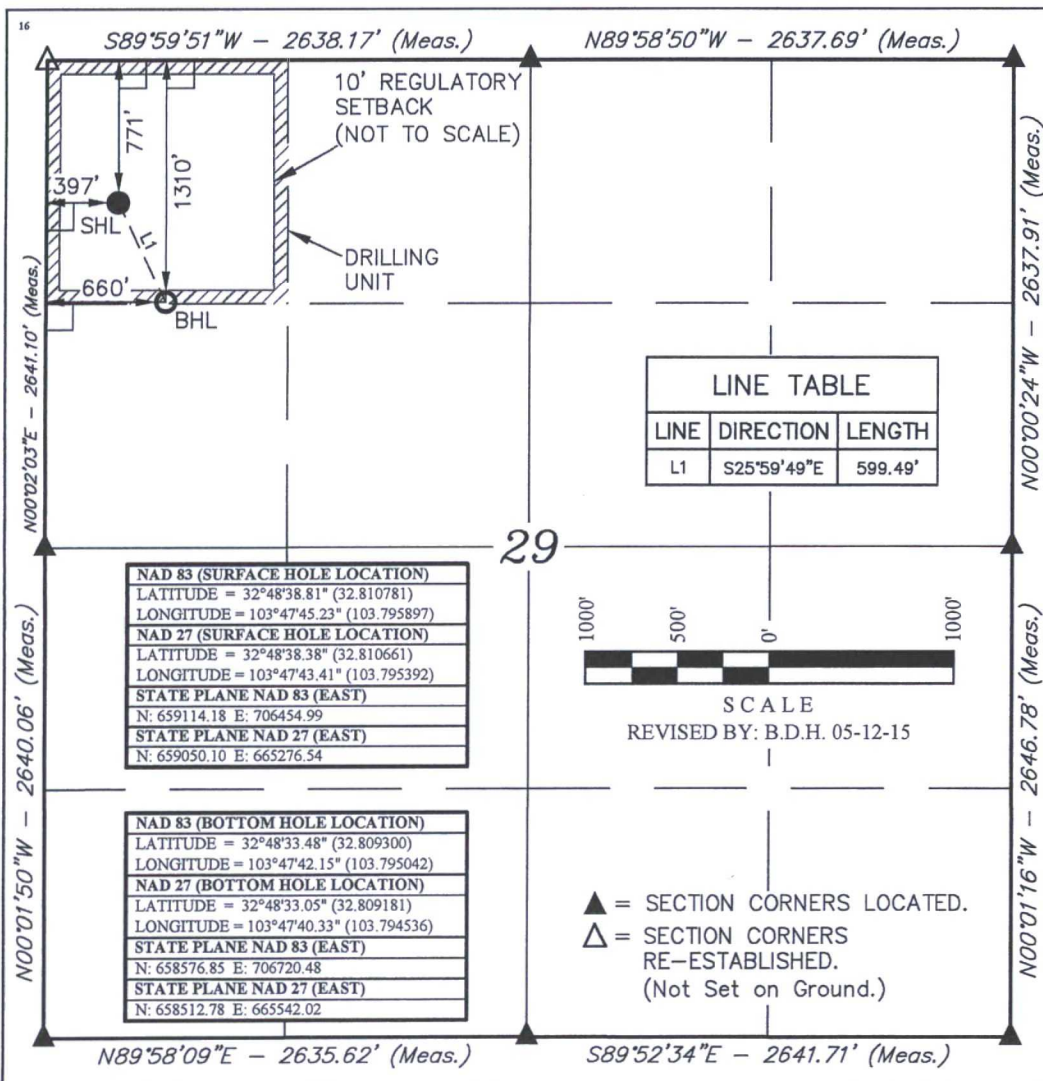
¹⁰ Surface Location

UL or lot no. D	Section 29	Township 17 S	Range 32 E	Lot Idn	Feet from the 771	North/South line NORTH	Feet from the 397	East/West line WEST	County LEA
--------------------	---------------	------------------	---------------	---------	----------------------	---------------------------	----------------------	------------------------	---------------

¹¹ Bottom Hole Location If Different From Surface

UL or lot no. D	Section 29	Township 17 S	Range 32 E	Lot Idn	Feet from the 1310	North/South line NORTH	Feet from the 660	East/West line WEST	County LEA
¹² Dedicated Acres 40	¹³ Joint or Infill	¹⁴ Consolidation Code	¹⁵ Order No.						

No allowable will be assigned to this completion until all interests have been consolidated or a non-standard unit has been approved by the division.



¹⁷ OPERATOR CERTIFICATION

I hereby certify that the information contained herein is true and complete to the best of my knowledge and belief, and that this organization either owns a working interest or unleased mineral interest in the land including the proposed bottom hole location or has a right to drill this well at this location pursuant to a contract with an owner of such a mineral or working interest, or to a voluntary pooling agreement or a compulsory pooling order heretofore entered by the division.

Susan B. Maunder 6/29/15
Signature Date

Susan B. Maunder
Printed Name

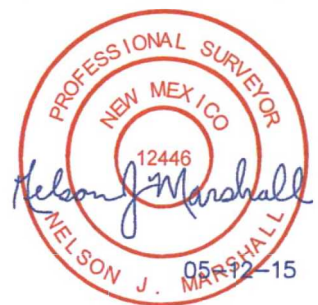
Susan.B.Maunder@cop.com
E-mail Address

¹⁸ SURVEYOR CERTIFICATION

I hereby certify that the well location shown on this plat was plotted from field notes of actual surveys made by me or under my supervision, and that the same is true and correct to the best of my belief.

April 16, 2014

Date of Survey
Signature and Seal of Professional Surveyor:

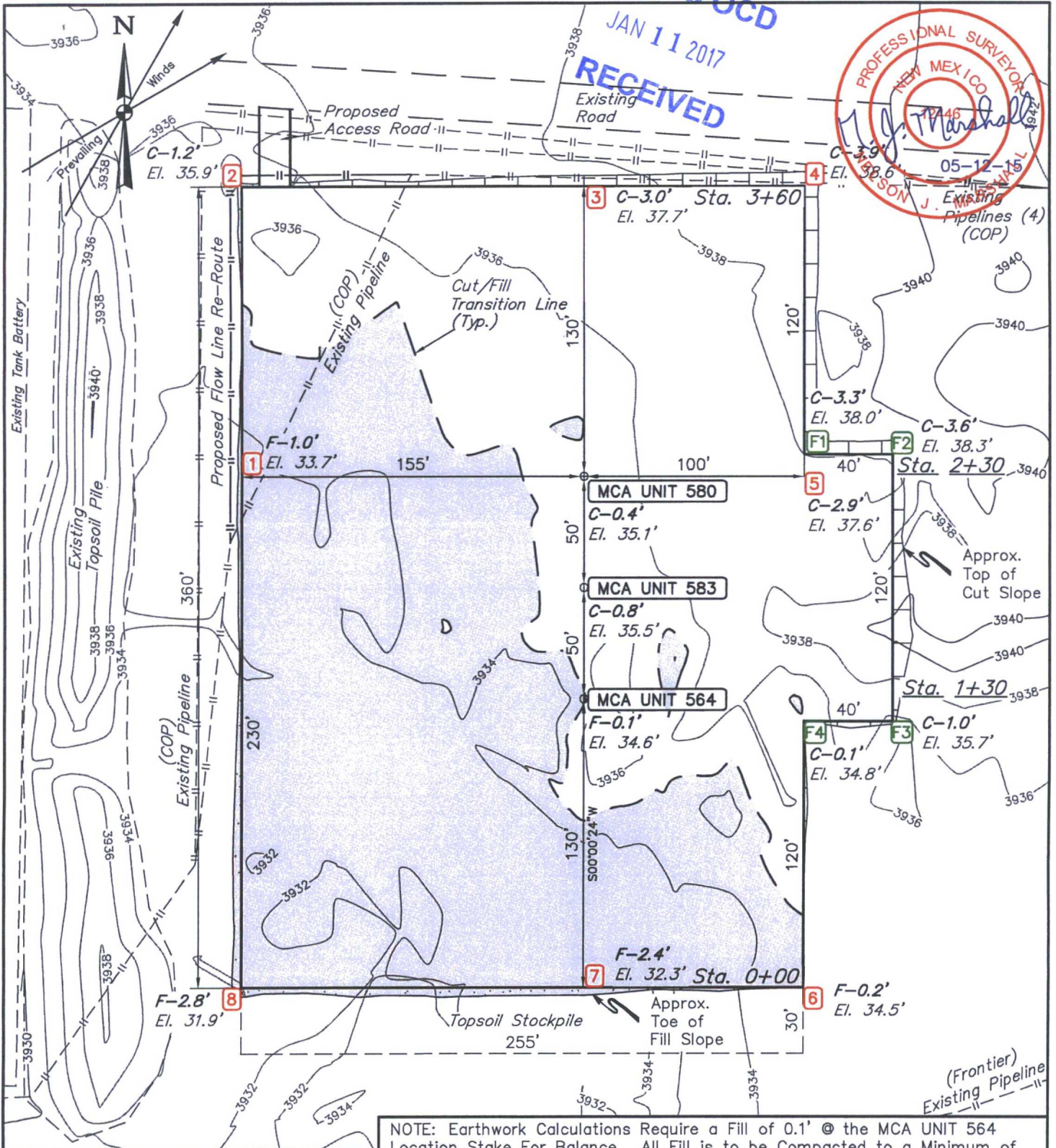
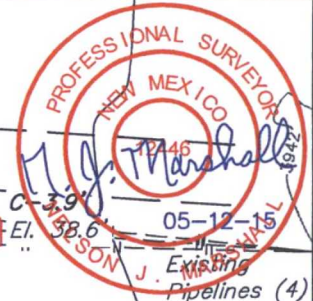


Certificate Number:

HOBBS OCD

JAN 11 2017

RECEIVED



FINISHED GRADE ELEVATION = 3934.7'

NOTES:

- Flare pit is to be located a min. of 100' from the wellhead.
- Contours shown at 2' intervals.
- Underground utilities shown on this sheet are for visualization purposes only, actual locations to be determined prior to construction.

ConocoPhillips Company

MCA UNIT 564, 583 & 580
NW 1/4 NW 1/4, SECTION 29, T17S, R32E, N.M.P.M.
LEA COUNTY, NEW MEXICO

DRAWN BY: B.D.H.

DATE DRAWN: 04-27-15

SCALE: 1" = 60'

REVISED: 05-12-15

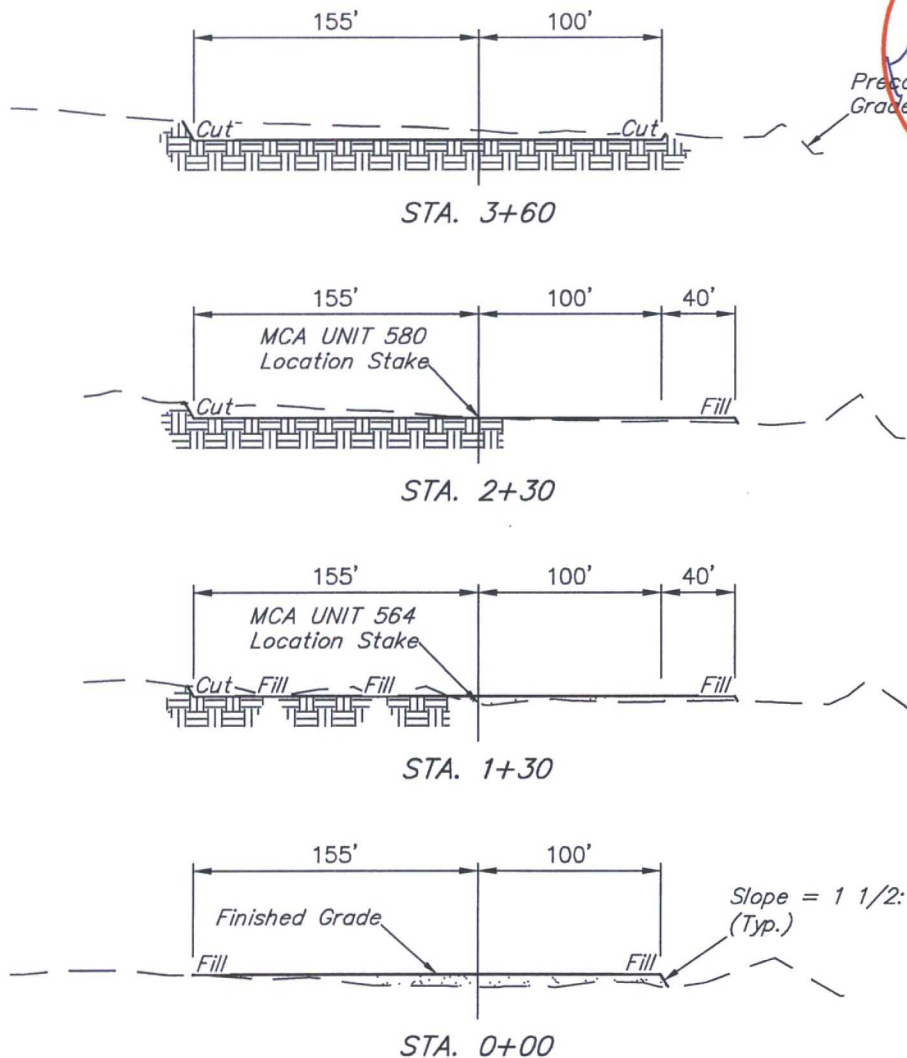
LOCATION LAYOUT

FIGURE #1



UELS, LLC
Corporate Office * 85 South 200 East
Vernal, UT 84078 * (435) 789-1017

1" = 40'
X-Section
Scale
1" = 100'



APPROXIMATE EARTHWORK QUANTITIES	
(3") TOPSOIL STRIPPING	930 Cu. Yds.
REMAINING LOCATION	2720 Cu. Yds.
TOTAL CUT	3650 Cu. Yds.
FILL	2720 Cu. Yds.
EXCESS MATERIAL	930 Cu. Yds.
TOPSOIL & PIT BACKFILL	930 Cu. Yds.
EXCESS UNBALANCE (After Interim Rehabilitation)	0 Cu. Yds.

APPROXIMATE SURFACE DISTURBANCE AREAS		
	DISTANCE	ACRES
WELL SITE DISTURBANCE	NA	±2.474
30' WIDE ACCESS ROAD R-O-W DISTURBANCE	±32.80'	±0.023
10' WIDE FLOW LINE R-O-W DISTURBANCE	±4350.90'	±0.999
10' WIDE POWER LINE RE-ROUTE R-O-W DISTURBANCE	±291.29'	±0.067
10' WIDE FLOW LINE RE-ROUTE R-O-W DISTURBANCE	±246.29'	±0.057
TOTAL SURFACE USE AREA		±3.620

NOTES:

- Fill quantity includes 5% for compaction.

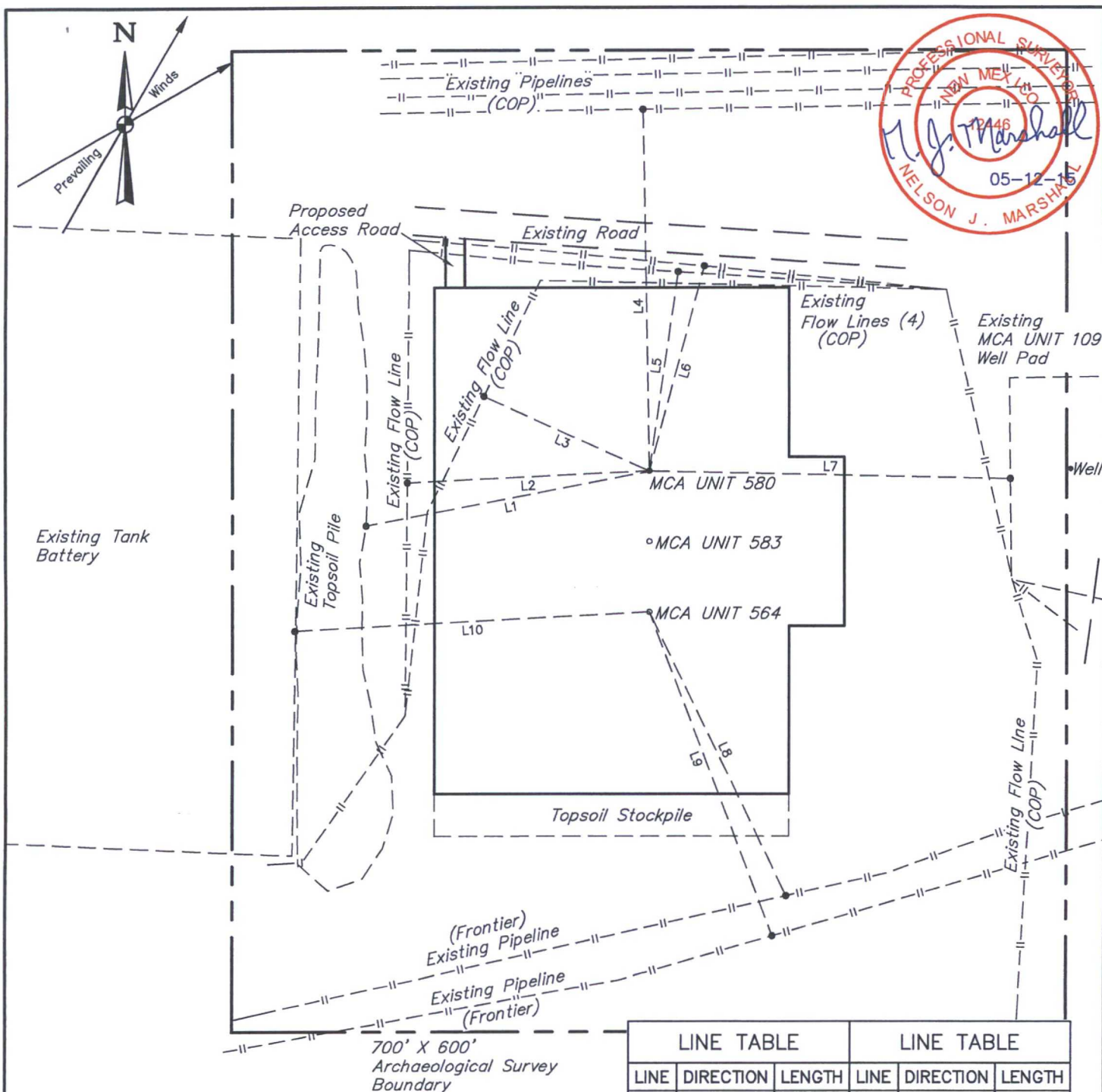
ConocoPhillips Company

MCA UNIT 564, 583 & 580
NW 1/4 NW 1/4, SECTION 29, T17S, R32E, N.M.P.M.
LEA COUNTY, NEW MEXICO



UELS, LLC
Corporate Office * 85 South 200 East
Vernal, UT 84078 * (435) 789-1017

DRAWN BY: B.D.H.	DATE DRAWN: 04-27-15
SCALE: AS SHOWN	REVISED: 05-12-15
TYPICAL CROSS SECTIONS	FIGURE #2



LINE TABLE			LINE TABLE		
LINE	DIRECTION	LENGTH	LINE	DIRECTION	LENGTH
L1	S79°W	210'	L6	N15°E	151'
L2	S87°W	175'	L7	S89°E	260'
L3	N66°W	130'	L8	S26°E	225'
L4	N01°W	258'	L9	S21°E	247'
L5	N08°E	143'	L10	S87°W	256'

NOTES:

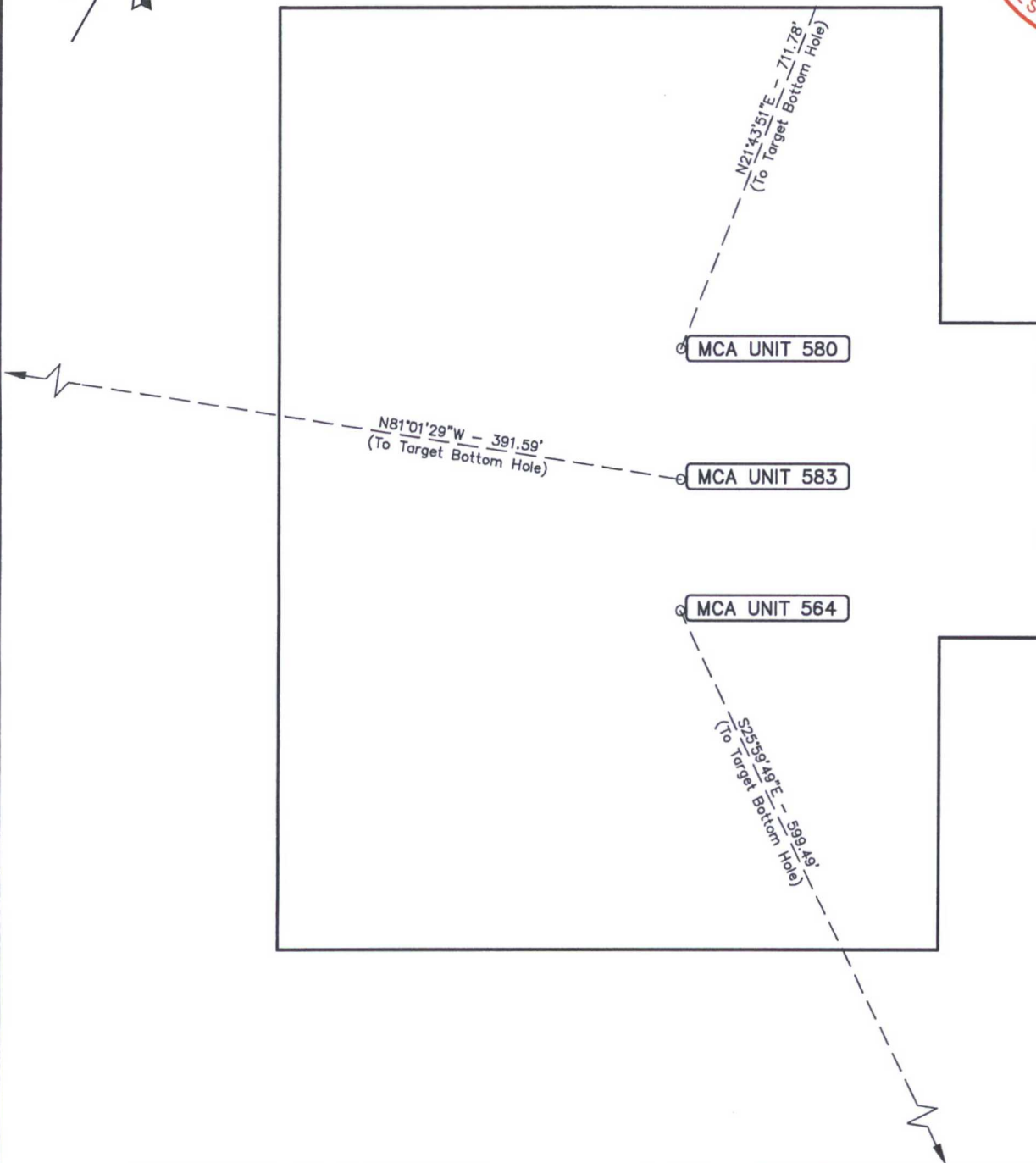
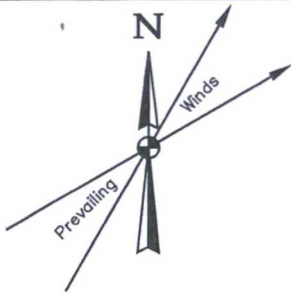
ConocoPhillips Company

MCA UNIT 564, 583 & 580
NW 1/4 NW 1/4, SECTION 29, T17S, R32E, N.M.P.M.
LEA COUNTY, NEW MEXICO



UELS, LLC
 Corporate Office * 85 South 200 East
 Vernal, UT 84078 * (435) 789-1017

DRAWN BY: B.D.H.	DATE DRAWN: 04-27-15
SCALE: 1" = 100'	REVISED: 05-12-15
ARCHAEOLOGICAL SURVEY BOUNDARY	FIGURE #5



ConocoPhillips Company

MCA UNIT 564, 583 & 580
NW 1/4 NW 1/4, SECTION 29, T17S, R32E, N.M.P.M.
LEA COUNTY, NEW MEXICO



UELS, LLC
Corporate Office * 85 South 200 East
Vernal, UT 84078 * (435) 789-1017

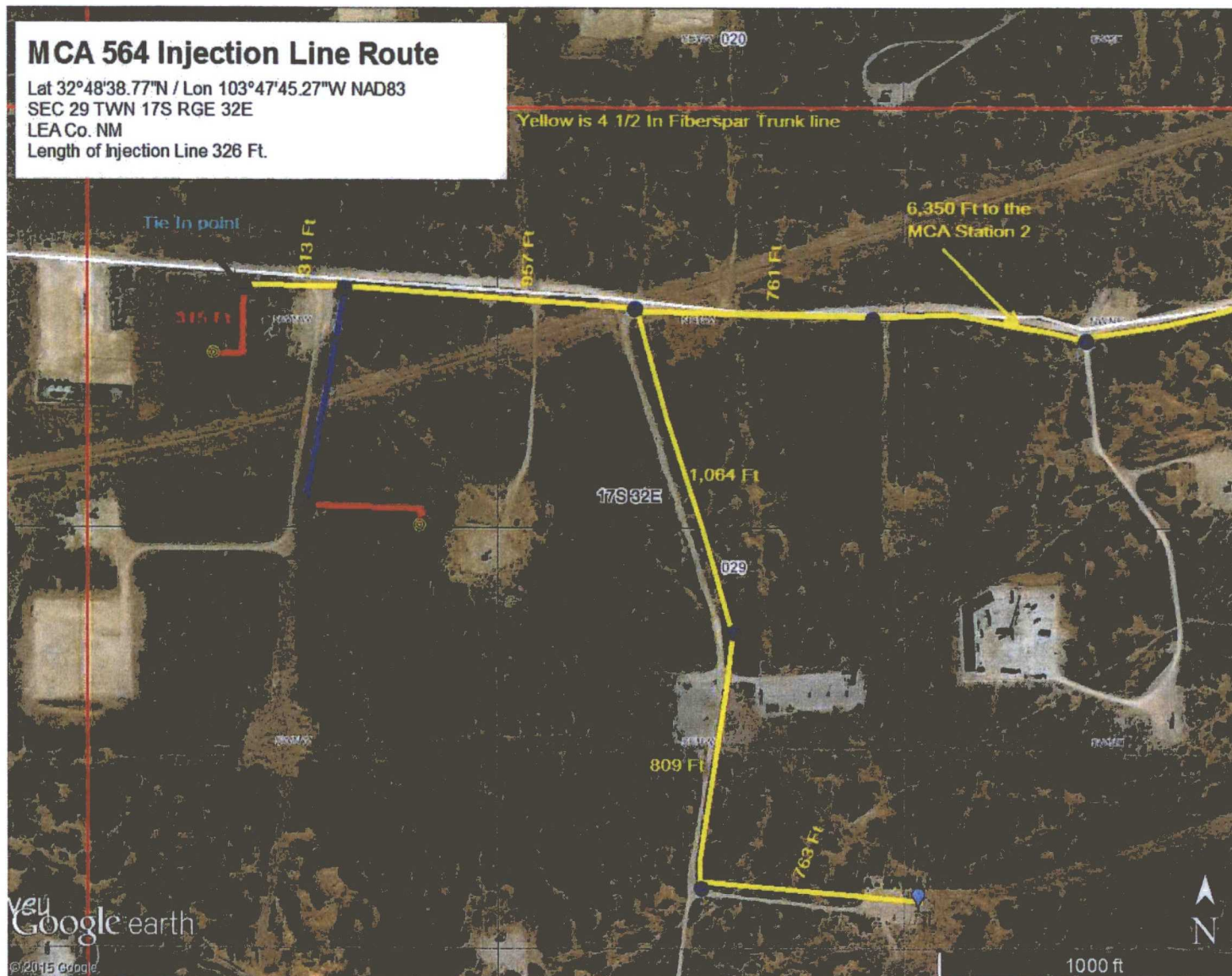
DRAWN BY: B.D.H.	DATE DRAWN: 04-27-15
SCALE: 1" = 60'	REVISED: 05-12-15

MULTI-WELL PLAN

FIGURE #6

MCA 564 Injection Line Route

Lat 32°48'38.77"N / Lon 103°47'45.27"W NAD83
SEC 29 TWN 17S RGE 32E
LEA Co. NM
Length of Injection Line 326 Ft.



MCA 564 Injector Line

LEA Co. NM
SEC 29
TWN 17S
RGE 32E

Lat 32°48'38.77"N NAD83
Lon 103°47'45.27"W NAD83

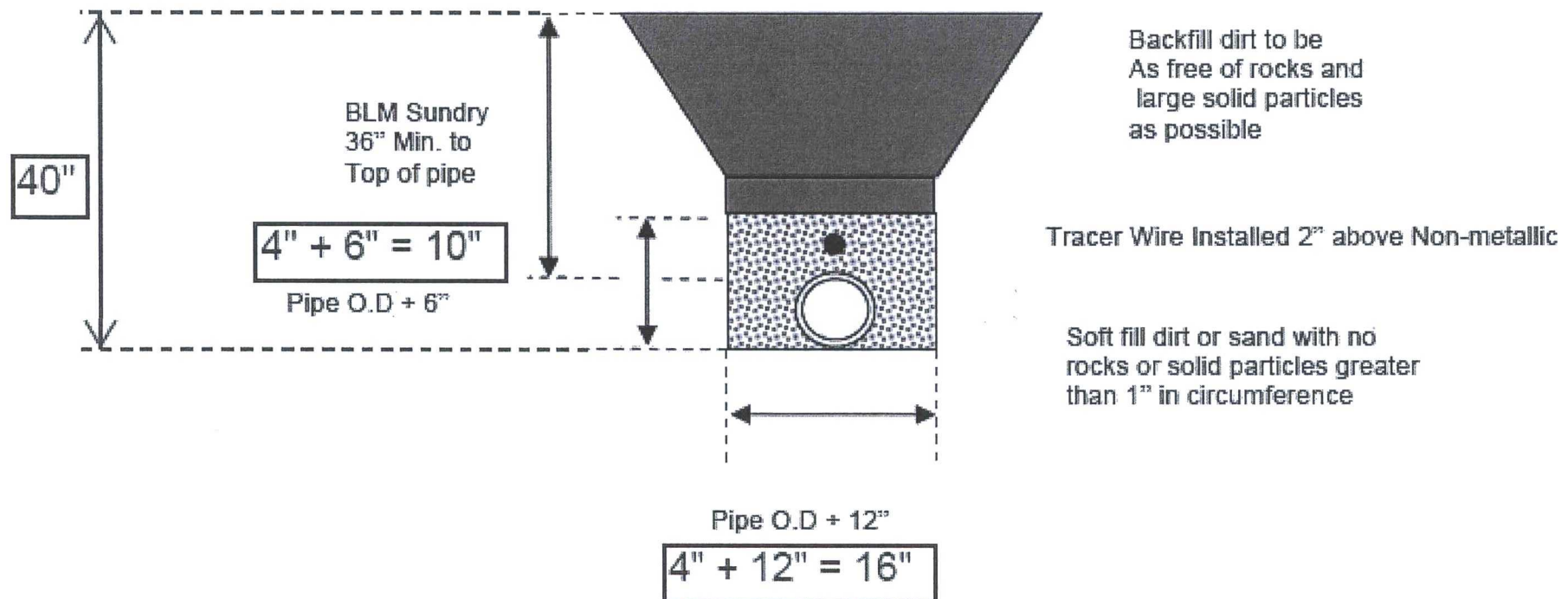
Length of injection line (Red) ~
326 FT
Fiberspar Pipe 2-1/2" 2,500 Lb
Buried in trench 36" Deep

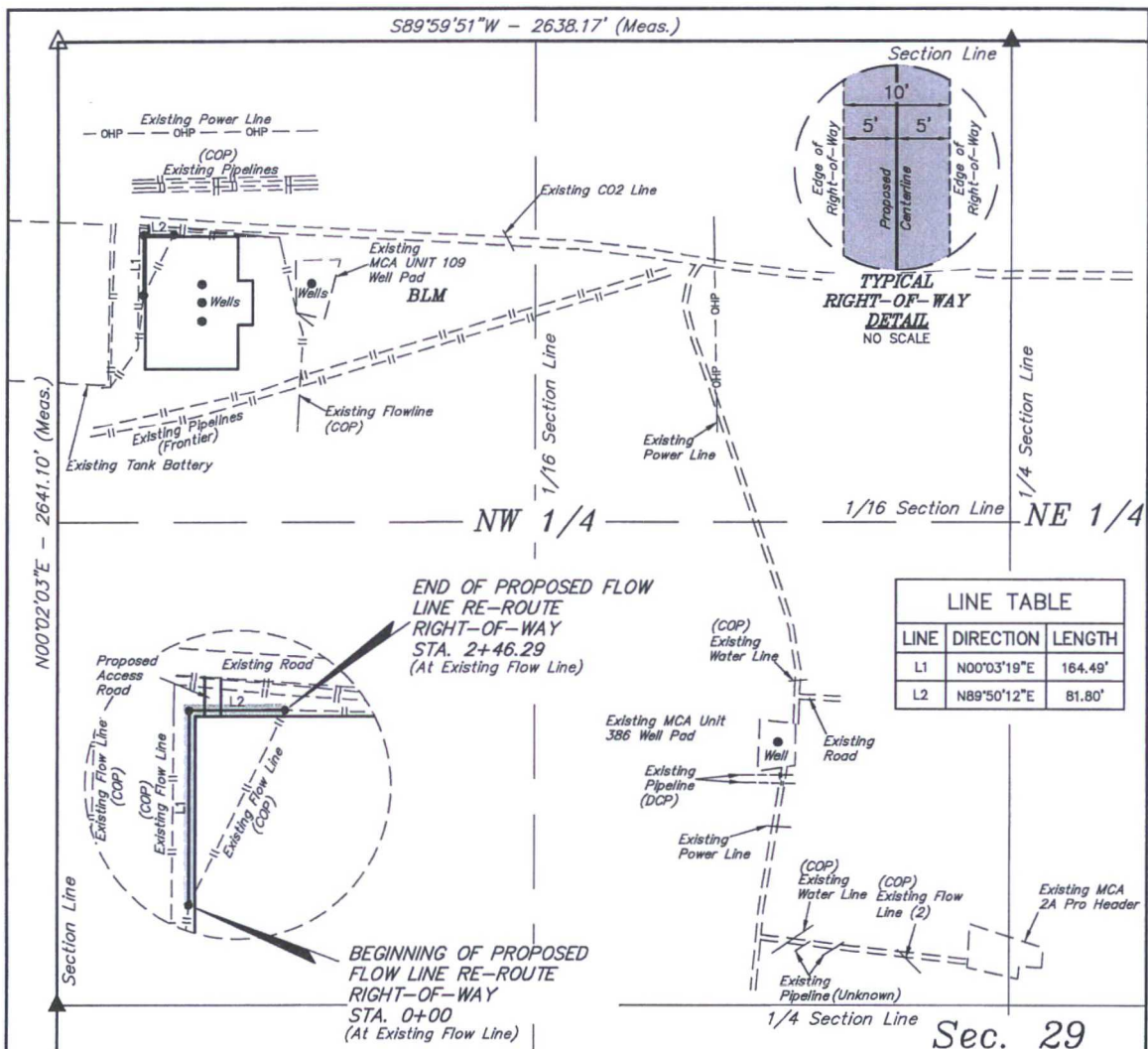
Approximate tie in point location
with proposed Trunk line (Blue
Dot)

Lat 32°48'40.99"N NAD83
Lon 103°47'44.13"W NAD 83

ACTUAL ROUTING WILL BE DETERMINED
THROUGH ADDITIONAL DISCUSSIONS AND
POSSIBLE ONSITE.

Figure D-1 Backfill around Pipe





FLOW LINE RE-ROUTE RIGHT-OF-WAY DESCRIPTION

A 10' WIDE RIGHT-OF-WAY 5' ON EACH SIDE OF THE FOLLOWING DESCRIBED CENTERLINE.

BEGINNING AT A POINT IN THE NW 1/4 NW 1/4 OF SECTION 29, T17S, R32E, N.M.P.M., WHICH BEARS N06°59'09"E 1955.02' FROM THE WEST 1/4 CORNER OF SAID SECTION 29, THENCE N00°03'19"E 164.49'; THENCE N89°50'12"E 81.80' TO A POINT IN THE NW 1/4 NW 1/4 OF SAID SECTION 29, WHICH BEARS N08°38'09"E 2129.38' FROM THE WEST 1/4 CORNER OF SAID SECTION 18. THE SIDE LINES OF SAID DESCRIBED RIGHT-OF-WAY BEING SHORTENED OR ELONGATED TO MEET THE GRANTOR'S PROPERTY LINES. BASIS OF BEARINGS IS A G.P.S. OBSERVATION. CONTAINS 0.057 ACRES MORE OR LESS.

BEGINNING OF FLOW LINE RE-ROUTE STA. 0+00 BEARS N06°59'09"E 1955.02' FROM THE WEST 1/4 CORNER OF SECTION 29, T17S, R32E, N.M.P.M.

END OF FLOW LINE RE-ROUTE STA. 2+46.29 BEARS N08°38'09"E 2129.38' FROM THE WEST 1/4 CORNER OF SECTION 29, T17S, R32E, N.M.P.M.



ACREAGE / LENGTH TABLE

	OWNERSHIP	FEET	RODS	ACRES
(SEC. 29 NW 1/4)	BLM	246.29	14.93	0.057

▲ = SECTION CORNERS LOCATED.

△ = SECTION CORNERS RE-ESTABLISHED.
(Not Set on Ground.)

NOTES:

CERTIFICATE
THIS IS TO CERTIFY THAT THE ABOVE PLAT WAS PREPARED FROM FIELD NOTES OF ACTUAL SURVEYS MADE BY ME OR UNDER MY SUPERVISION AND THAT THE SAME ARE TRUE AND CORRECT TO THE BEST OF MY KNOWLEDGE AND BELIEF.

12446
05-05-15

ConocoPhillips Company

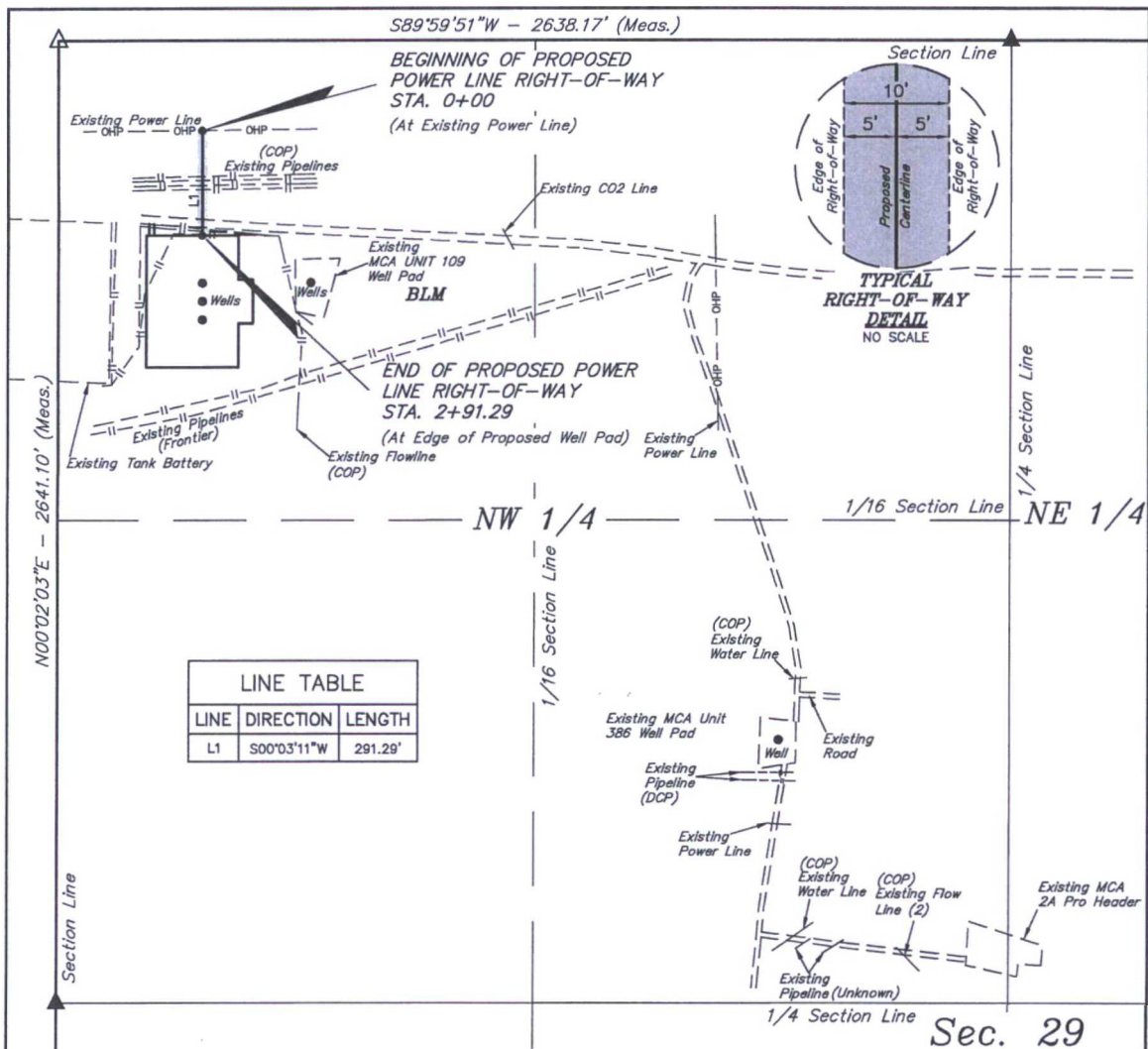
MCA UNIT 564, 583 & 580
SECTION 29, T17S, R32E, N.M.P.M.
LEA COUNTY, NEW MEXICO

DRAWN BY: B.D.H. DATE DRAWN: 04-28-15
SCALE: 1" = 400' REVISED: 00-00-00

FLOW LINE RE-ROUTE R-O-W



UELS, LLC
Corporate Office * 85 South 200 East
Vernal, UT 84078 * (435) 789-1017



POWER LINE RIGHT-OF-WAY DESCRIPTION

A 10' WIDE RIGHT-OF-WAY 5' ON EACH SIDE OF THE FOLLOWING DESCRIBED CENTERLINE.

BEGINNING AT A POINT IN THE NW 1/4 NW 1/4 OF SECTION 29, T17S, R32E, N.M.P.M., WHICH BEARS N09°27'25"E 2424.20' FROM THE WEST 1/4 CORNER OF SAID SECTION 29, THENCE S00°03'11"W 291.29' TO A POINT IN THE NW 1/4 NW 1/4 OF SAID SECTION 29, WHICH BEARS N10°43'58"E 2137.36' FROM THE WEST 1/4 CORNER OF SAID SECTION 18. THE SIDE LINES OF SAID DESCRIBED RIGHT-OF-WAY BEING SHORTENED OR ELONGATED TO MEET THE GRANTOR'S PROPERTY LINES. BASIS OF BEARINGS IS A G.P.S. OBSERVATION. CONTAINS 0.067 ACRES MORE OR LESS.

BEGINNING OF POWER LINE STA. 0+00 BEARS
N09°27'25"E 2424.20' FROM THE WEST 1/4
CORNER OF SECTION 29, T17S, R32E,
N.M.P.M.

END OF POWER LINE STA. 2+91.29 BEARS
N10°43'58"E 2137.36' FROM THE WEST 1/4
CORNER OF SECTION 29, T17S, R32E,
N.M.P.M.



ACREAGE / LENGTH TABLE

	OWNERSHIP	FEET	RODS	ACRES
(SEC. 29 NW 1/4)	BLM	291.29	17.65	0.067

- ▲ = SECTION CORNERS LOCATED.
△ = SECTION CORNERS RE-ESTABLISHED.
(Not Set on Ground.)

NOTES:

CERTIFICATE
THIS IS TO CERTIFY THAT THE ABOVE PLAT WAS PREPARED FROM FIELD
NOTES OF ACTUAL SURVEYS MADE BY ME OR UNDER MY SUPERVISION
AND THAT THE SAME ARE TRUE AND CORRECT TO THE BEST OF MY
KNOWLEDGE AND BELIEF.

REGISTERED LAND SURVEYOR
REGISTRATION NO. 12446
STATE OF NEW MEXICO
05-05-15

ConocoPhillips Company

MCA UNIT 564, 583 & 580
SECTION 29, T17S, R32E, N.M.P.M.
LEA COUNTY, NEW MEXICO

DRAWN BY: B.D.H. DATE DRAWN: 04-28-15
SCALE: 1" = 400' REVISED: 00-00-00

POWER LINE R-O-W



UELS, LLC
Corporate Office * 85 South 200 East
Vernal, UT 84078 * (435) 789-1017

BEGINNING AT THE INTERSECTION OF U.S. HIGHWAY 82 AND MALJAMAR ROAD/COUNTY ROAD 126, PROCEED IN A SOUTHERLY DIRECTION FROM MALJAMAR, NEW MEXICO ALONG MALJAMAR ROAD/COUNTY ROAD 126 APPROXIMATELY 3.3 MILES TO THE JUNCTION OF THIS ROAD AND AN EXISTING ROAD TO THE WEST; TURN RIGHT AND PROCEED IN A WESTERLY, THEN NORTHERLY, THEN WESTERLY DIRECTION APPROXIMATELY 2.1 MILES TO THE JUNCTION OF THIS ROAD AND THE BEGINNING OF THE PROPOSED ACCESS ROAD TO THE SOUTH; FOLLOW ROAD FLAGS IN A SOUTHERLY DIRECTION APPROXIMATELY 33' TO THE PROPOSED LOCATION.

TOTAL DISTANCE FROM MALJAMAR, NEW MEXICO TO THE PROPOSED LOCATION IS APPROXIMATELY 5.4 MILES.

ConocoPhillips Company

MCA UNIT 564, 583 & 580
NW 1/4 NW 1/4, SECTION 29, T17S, R32E, N.M.P.M.
LEA COUNTY, NEW MEXICO



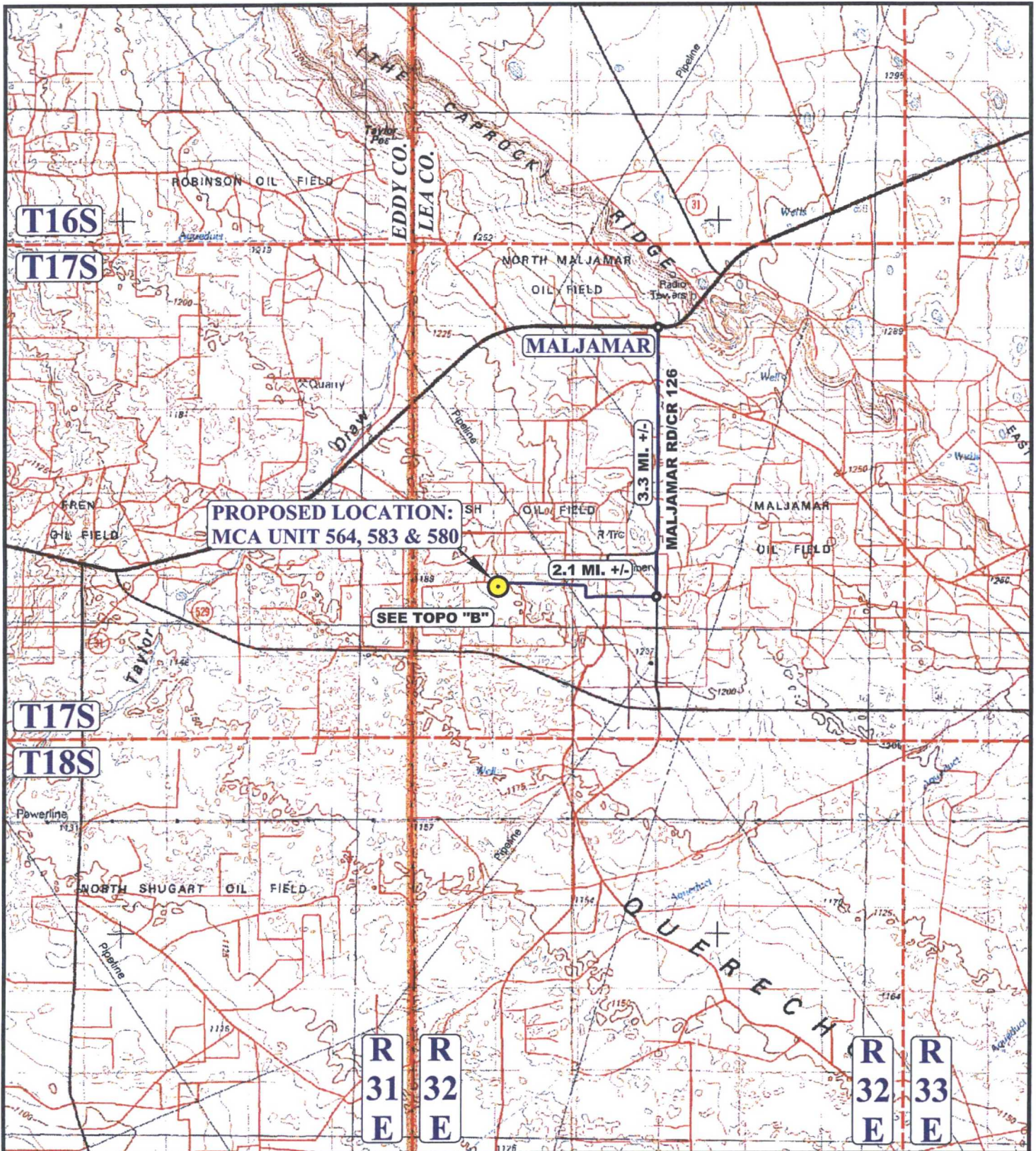
UELS, LLC
Corporate Office * 85 South 200 East
Vernal, UT 84078 * (435) 789-1017

DRAWN BY: B.D.

DATE DRAWN: 04-23-15

REVISED: 00-00-00

ROAD DESCRIPTION



LEGEND:

 PROPOSED LOCATION

ConocoPhillips Company

MCA UNIT 564, 583 & 580
NW 1/4 NW 1/4, SECTION 29, T17S, R32E, N.M.P.M.
LEA COUNTY, NEW MEXICO

DRAWN BY: B.D.

DATE DRAWN: 04-23-15

SCALE: 1:100,000

REVISED: 00-00-00

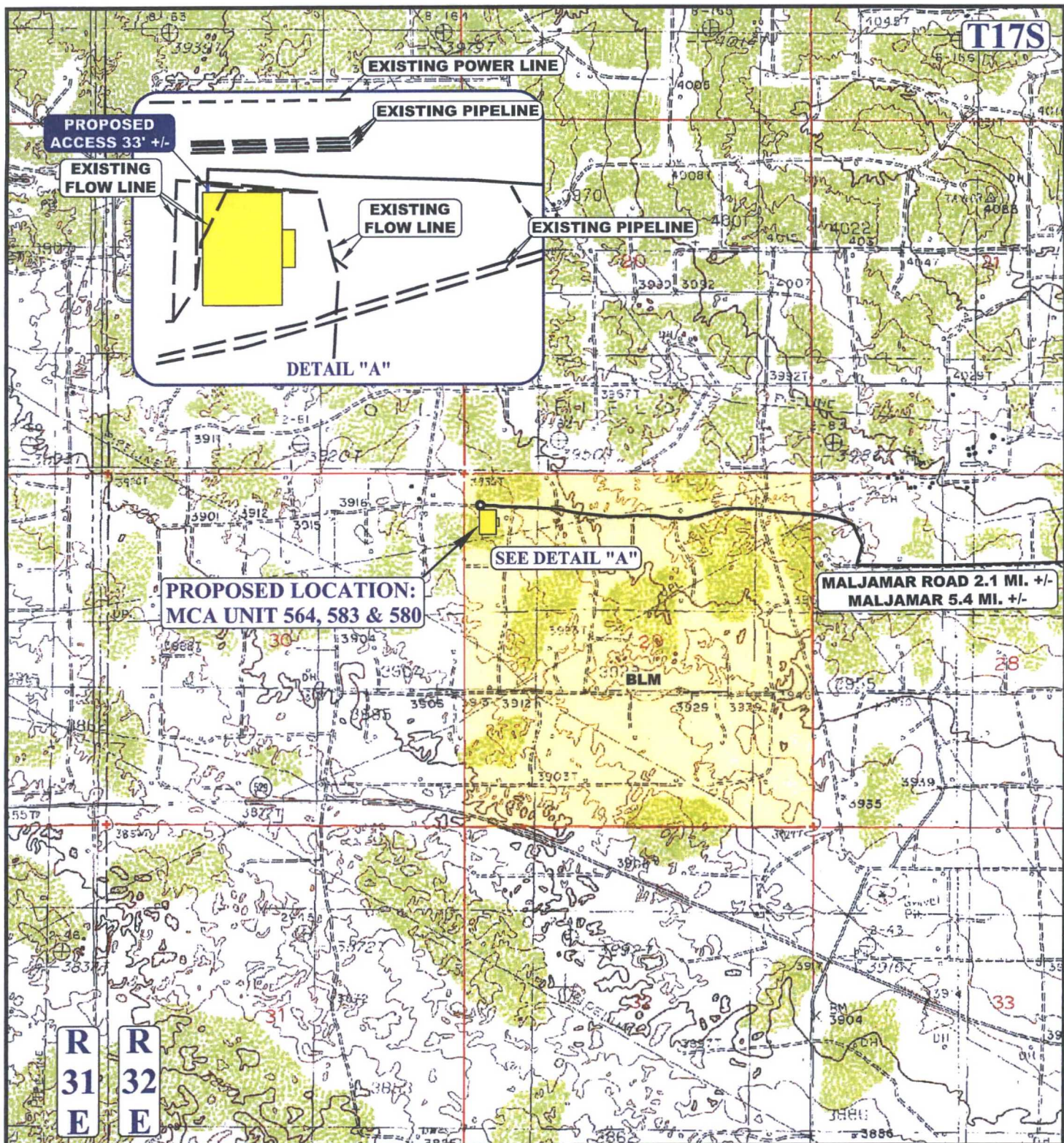
ACCESS ROAD MAP

TOPO A



UELS, LLC
Corporate Office * 85 South 200 East
Vernal, UT 84078 * (435) 789-1017





NOTE: PARCEL DATA SHOWN HAS BEEN OBTAINED FROM VARIOUS SOURCES AND SHOULD BE USED FOR MAPPING, GRAPHIC AND PLANNING PURPOSES ONLY. NO WARRANTY IS MADE BY UTAH ENGINEERING AND LAND SURVEYING (UELS) FOR ACCURACY OF THE PARCEL DATA.

LEGEND:

- EXISTING ROAD
- PROPOSED ROAD
- EXISTING POWER LINE
- EXISTING WATER LINE
- EXISTING PIPELINE
- EXISTING FLOW LINE



UELS, LLC
Corporate Office * 85 South 200 East
Vernal, UT 84078 * (435) 789-1017



ConocoPhillips Company

MCA UNIT 564, 583 & 580
NW 1/4 NW 1/4, SECTION 29, T17S, R32E, N.M.P.M.
LEA COUNTY, NEW MEXICO

DRAWN BY: B.D.

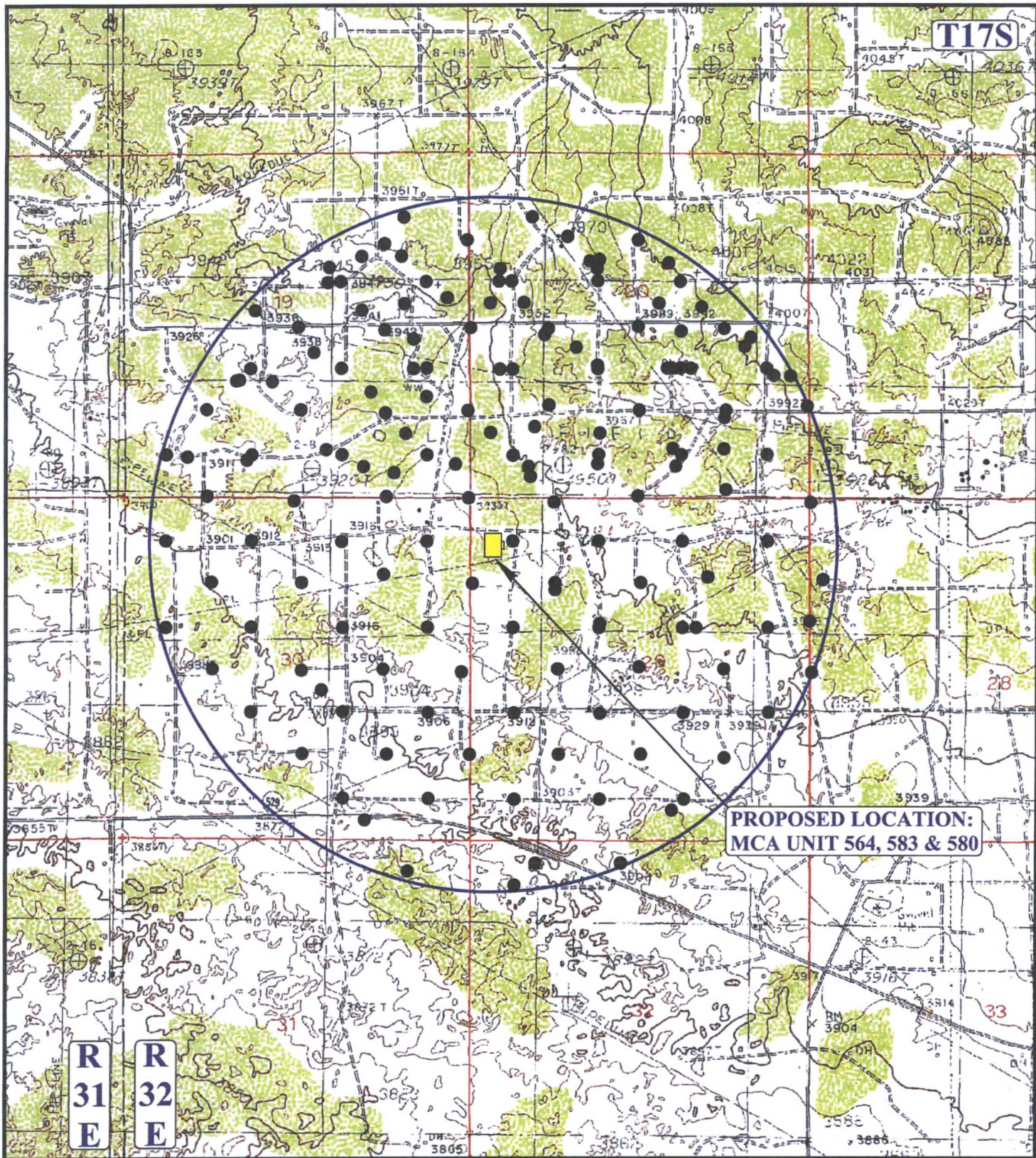
DATE DRAWN: 04-23-15

SCALE: 1" = 2000'

REVISED: 00-00-00

ACCESS ROAD MAP

TOPO B



**PROPOSED LOCATION:
MCA UNIT 564, 583 & 580**

LEGEND:

- PRODUCING WELLS



UELS, LLC
Corporate Office * 85 South 200 East
Vernal, UT 84078 * (435) 789-1017



ConocoPhillips Company

MCA UNIT 564, 583 & 580
NW 1/4 NW 1/4, SECTION 29, T17S, R32E, N.M.P.M.
LEA COUNTY, NEW MEXICO

DRAWN BY: B.D.

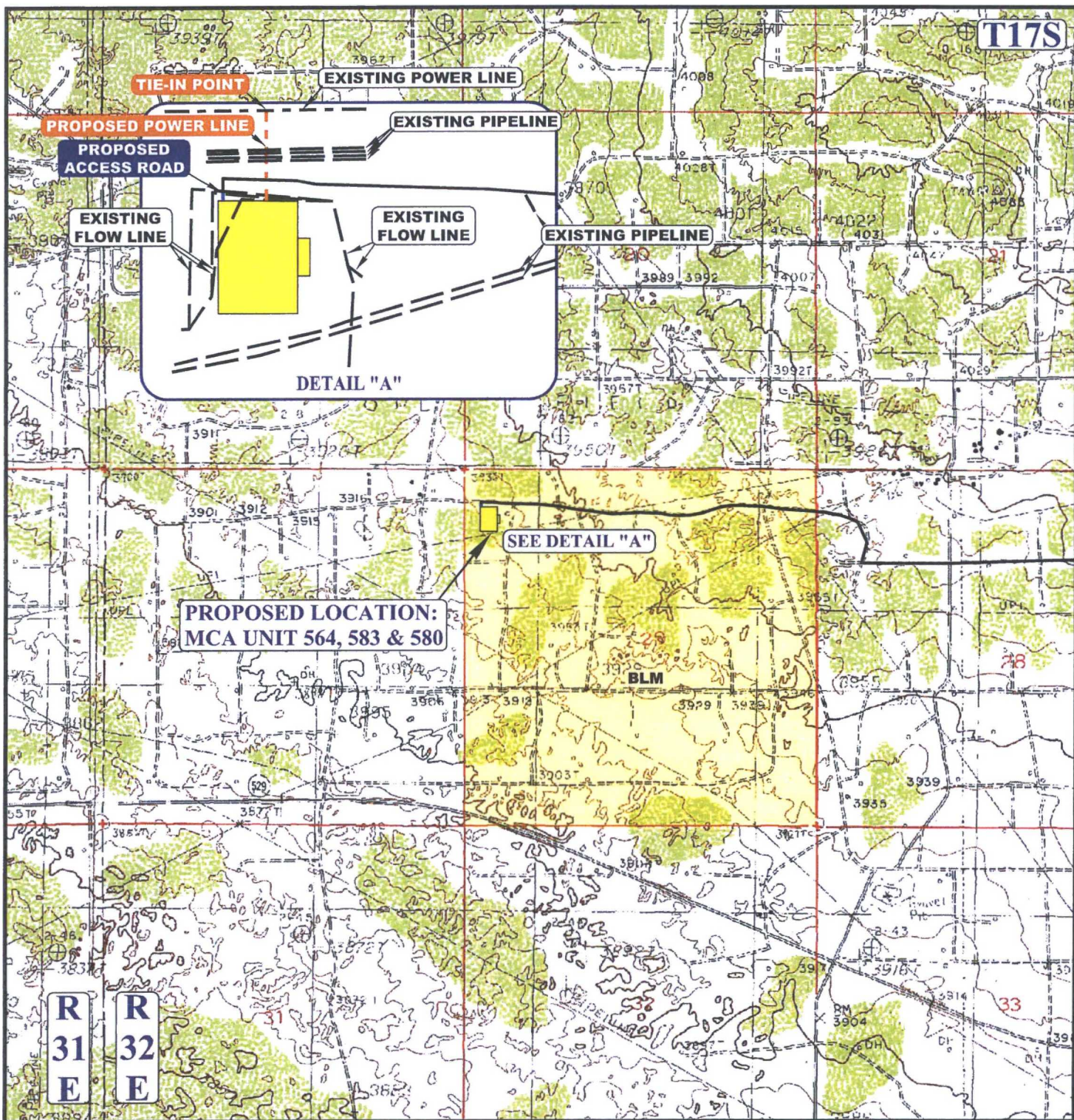
DATE DRAWN: 04-23-15

SCALE: 1" = 2000'

REVISED: 00-00-00

WELL PROXIMITY MAP

TOPO C



APPROXIMATE TOTAL POWER LINE DISTANCE = 291' +/-

NOTE: PARCEL DATA SHOWN HAS BEEN OBTAINED FROM VARIOUS SOURCES AND SHOULD BE USED FOR MAPPING, GRAPHIC AND PLANNING PURPOSES ONLY. NO WARRANTY IS MADE BY UTAH ENGINEERING AND LAND SURVEYING (UELS) FOR ACCURACY OF THE PARCEL DATA.

LEGEND:

- EXISTING ROAD
- PROPOSED ROAD
- - - PROPOSED POWER LINE
- - - EXISTING POWER LINE
- - - EXISTING PIPELINE
- - - EXISTING WATER LINE



UELS, LLC
Corporate Office * 85 South 200 East
Vernal, UT 84078 * (435) 789-1017



ConocoPhillips Company

MCA UNIT 564, 583 & 580
NW 1/4 NW 1/4, SECTION 29, T17S, R32E, N.M.P.M.
LEA COUNTY, NEW MEXICO

DRAWN BY: B.D.

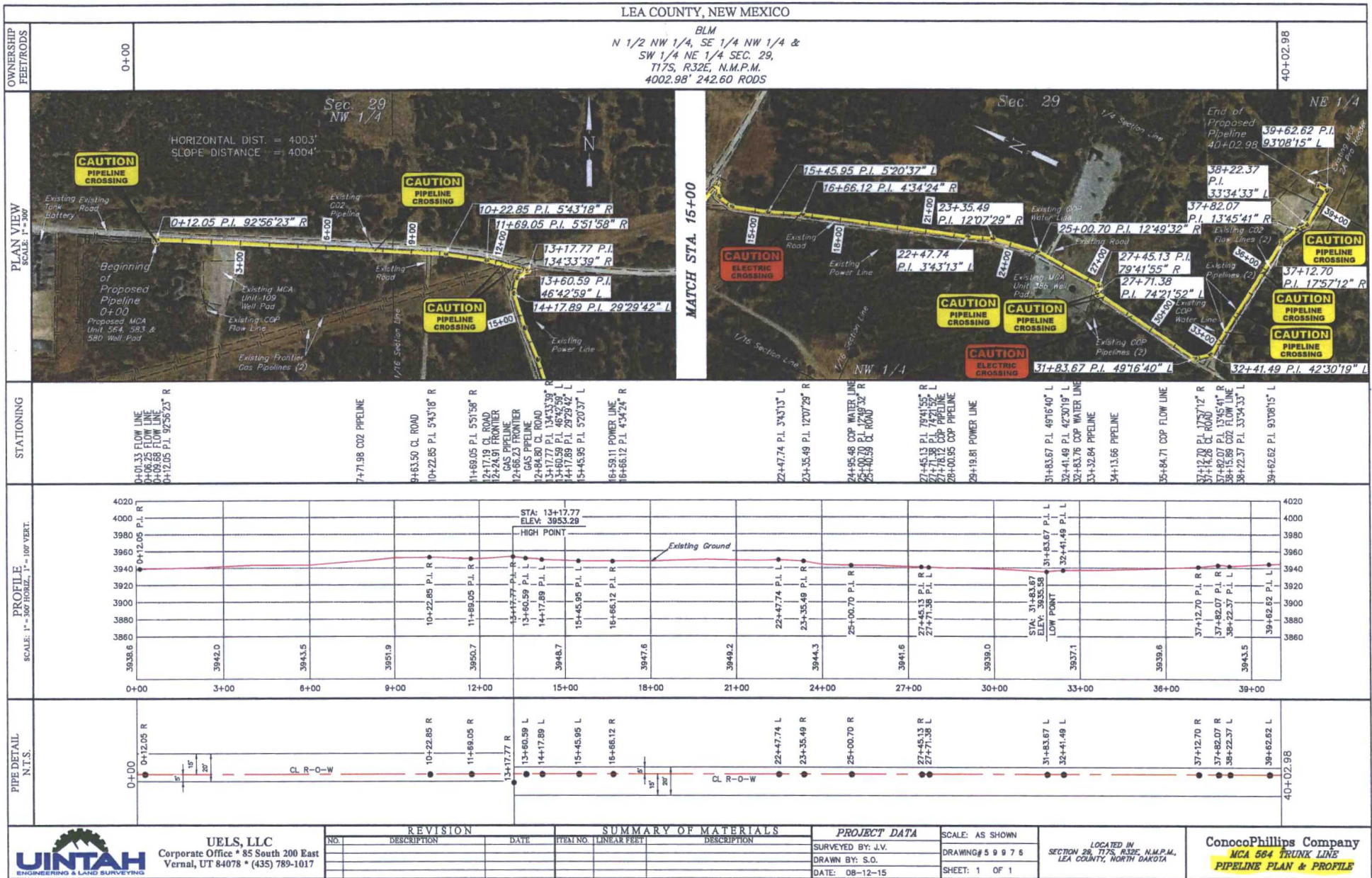
DATE DRAWN: 04-23-15

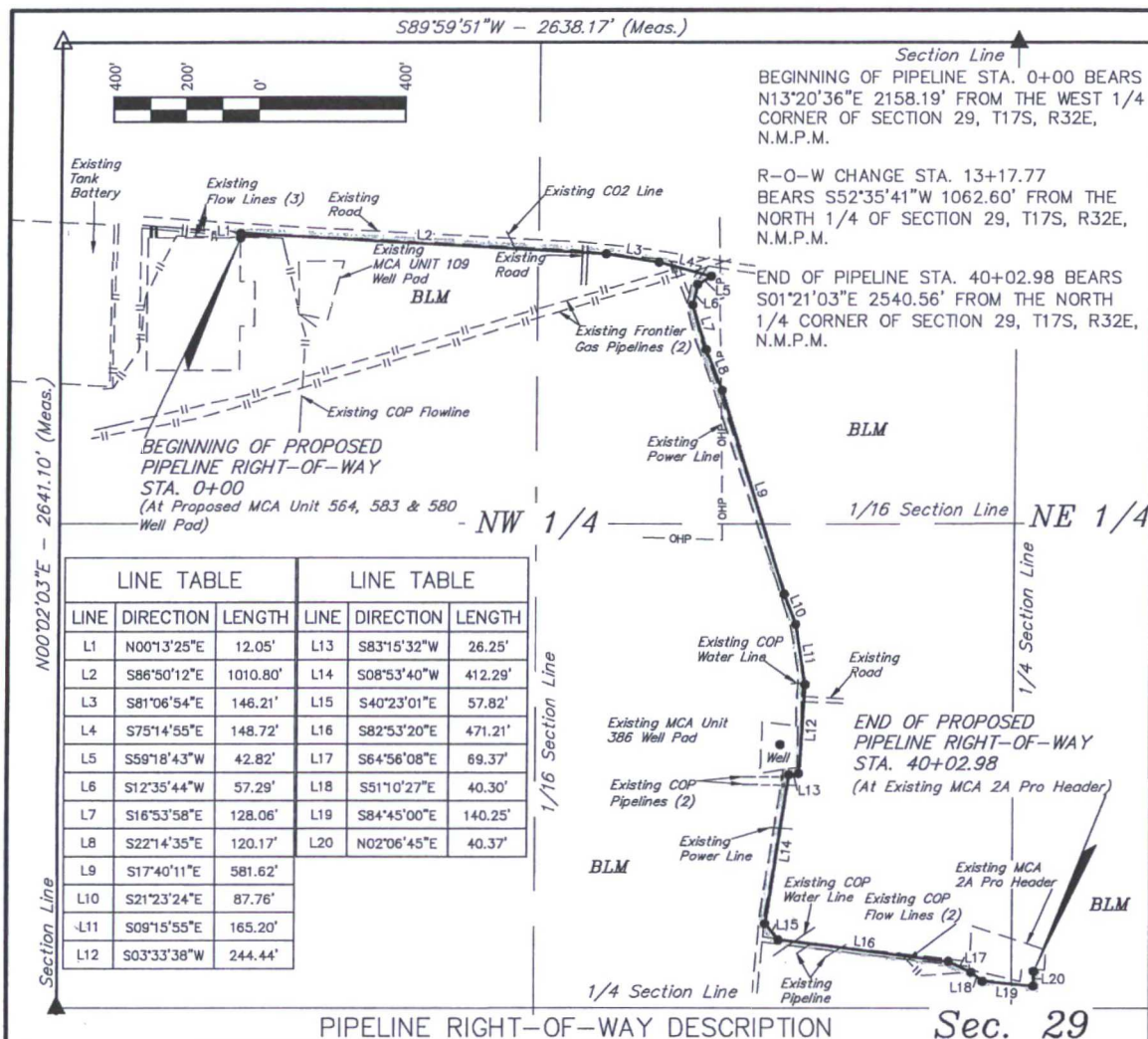
SCALE: 1" = 2000'

REVISED: 00-00-00

POWER LINE MAP

TOPO E

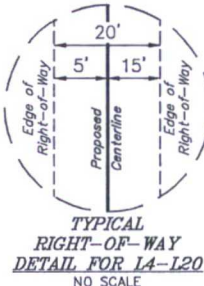
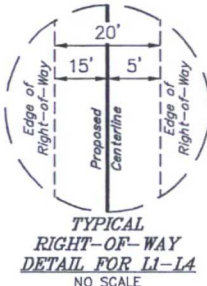




BEGINNING AT A POINT IN THE NW 1/4 NW 1/4 OF SECTION 29, T17S, R32E, N.M.P.M., WHICH BEARS N13°20'36"E 2158.19' FROM THE WEST 1/4 CORNER OF SAID SECTION 29, THENCE A 20' WIDE RIGHT-OF-WAY 15' ON THE LEFT SIDE AND 5' ON THE RIGHT SIDE OF THE FOLLOWING DESCRIBED CENTERLINE, N00°13'25"E 12.05'; THENCE S86°50'12"E 1010.80'; THENCE S81°06'54"E 146.21'; THENCE S75°14'55"E 148.72' TO A POINT IN THE NE 1/4 NW 1/4 OF SAID SECTION 29, WHICH BEARS S52°35'41"W 1062.60' FROM THE NORTH 1/4 OF SAID SECTION 29, THENCE A 20' WIDE RIGHT-OF-WAY 15' ON THE RIGHT SIDE AND 5' ON THE LEFT SIDE OF THE FOLLOWING DESCRIBED CENTERLINE, S59°18'43"W 42.82'; THENCE S12°35'44"W 57.29'; THENCE S16°53'58"E 128.06'; THENCE S22°14'35"E 120.17'; THENCE S17°40'11"E 581.62'; THENCE S21°23'24"E 87.76'; THENCE S09°15'55"E 165.20'; THENCE S03°33'38"W 244.44'; THENCE S83°15'32"W 26.25'; THENCE S08°53'40"W 412.29'; THENCE S40°23'01"E 57.82'; THENCE S82°53'20"E 471.21'; THENCE S64°56'08"E 69.37'; THENCE S51°10'27"E 40.30'; THENCE S84°45'00"E 140.25'; THENCE N02°06'45"E 40.37' TO A POINT IN THE SW 1/4 NE 1/4 OF SAID SECTION 29, WHICH BEARS S01°21'03"E 2540.56' FROM THE NORTH 1/4 CORNER OF SAID SECTION 29. THE SIDE LINES OF SAID DESCRIBED RIGHT-OF-WAY BEING SHORTENED OR ELONGATED TO MEET THE GRANTOR'S PROPERTY LINES. BASIS OF BEARINGS IS A G.P.S. OBSERVATION. CONTAINS 1.838 ACRES MORE OR LESS.

ACREAGE / LENGTH TABLE

	OWNERSHIP	FEET	RODS	ACRES
SEC. 29 NW 1/4	BLM	3902.64	236.52	1.792
SEC. 29 NE 1/4	BLM	100.34	6.08	0.046
TOTAL		4002.98	242.60	1.838



- ▲ = SECTION CORNERS LOCATED.
 △ = SECTION CORNERS RE-ESTABLISHED.
 (Not Set on Ground.)

NOTES:
 • Basis of bearing is a G.P.S. observation (Vertical Control Datum: NAVD88)

CERTIFICATE
 THIS IS TO CERTIFY THAT THE ABOVE PLAT WAS PREPARED FROM FIELD NOTES OF ACTUAL SURVEYS MADE BY ME OR UNDER MY SUPERVISION AND THAT THE SAME ARE TRUE AND CORRECT TO THE BEST OF MY KNOWLEDGE AND BELIEF.

REGISTERED LAND SURVEYOR
 REGISTRATION NO. 12446
 STATE OF NEW MEXICO

08-12-15

ConocoPhillips Company

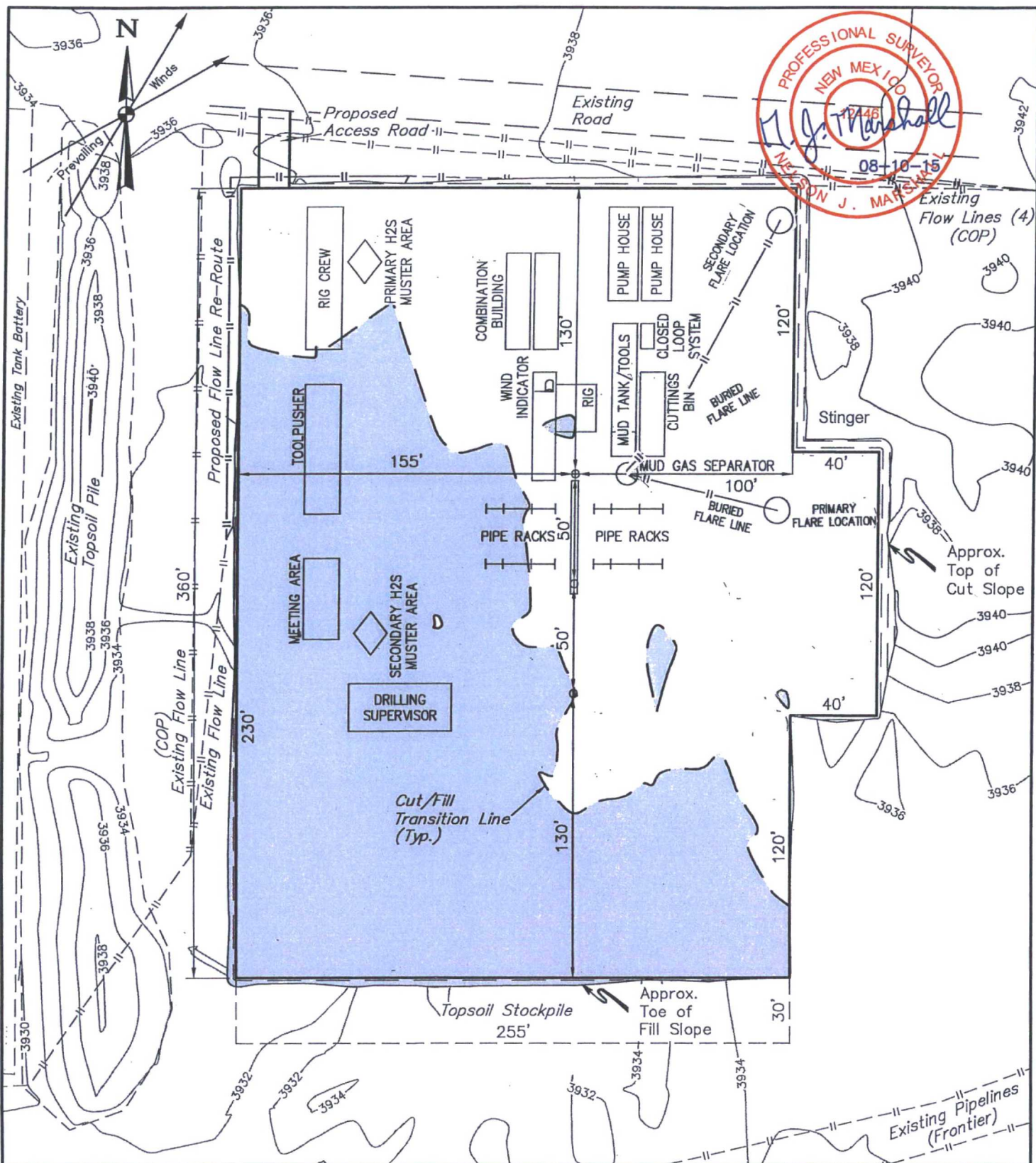
MCA 564 TRUNK LINE
 SECTION 29, T17S, R32E, N.M.P.M.
 LEA COUNTY, NEW MEXICO

DRAWN BY: S.O. DATE DRAWN: 08-12-15
 SCALE: 1" = 400' REVISED: 00-00-00

PIPELINE R-O-W



UELS, LLC
 Corporate Office * 85 South 200 East
 Vernal, UT 84078 * (435) 789-1017



NOTES:

- Contours shown at 2' intervals.
- May have a different number of pump houses and combination buildings.
- Flare may not be needed depending on rig used.

ConocoPhillips Company

MCA UNIT 564, 583 & 580
NW 1/4 NW 1/4, SECTION 29, T17S, R32E, N.M.P.M.
LEA COUNTY, NEW MEXICO



UELS, LLC
 Corporate Office * 85 South 200 East
 Vernal, UT 84078 * (435) 789-1017

DRAWN BY: B.D.H.

DATE DRAWN: 04-27-15

SCALE: 1" = 60'

REVISED: 08-07-15 H.W.

TYPICAL RIG LAYOUT

FIGURE #3

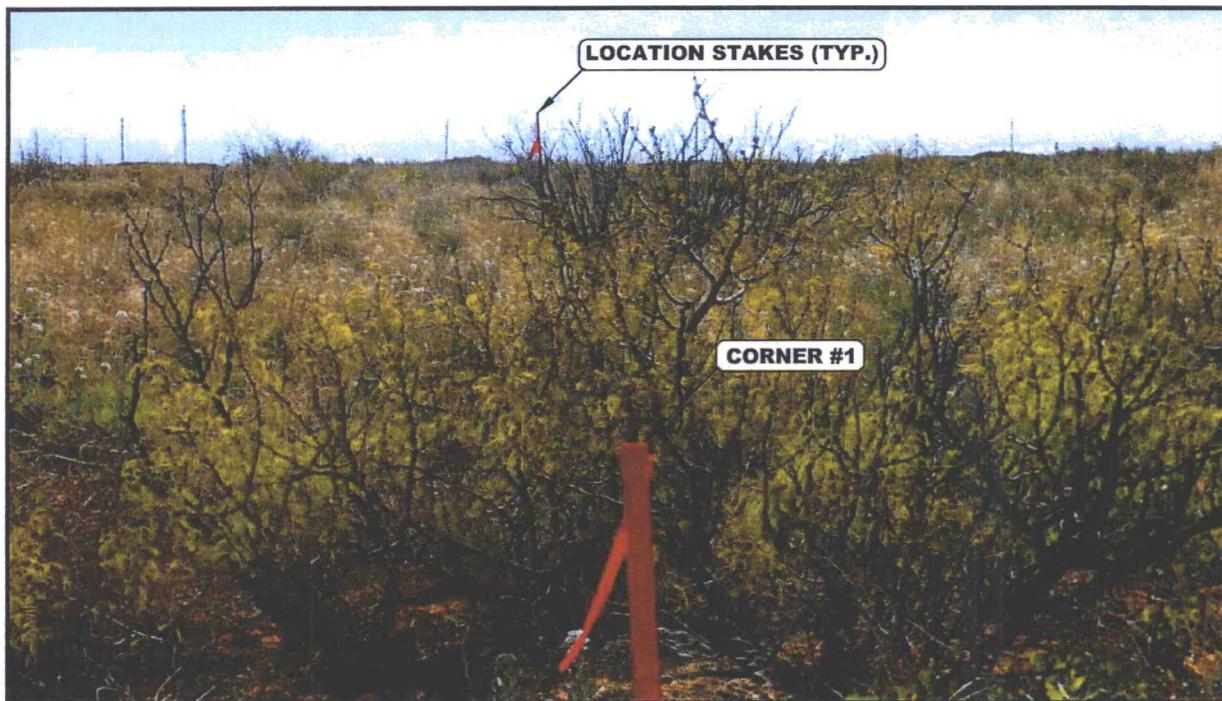


PHOTO: VIEW FROM CORNER #1 TO LOCATION STAKE

CAMERA ANGLE: EASTERLY



PHOTO: VIEW FROM BEGINNING OF PROPOSED ACCESS

CAMERA ANGLE: SOUTHERLY

ConocoPhillips Company

MCA UNIT 564, 583 & 580
NW 1/4 NW 1/4, SECTION 29, T17S, R32E, N.M.P.M.
LEA COUNTY, NEW MEXICO



UELS, LLC
Corporate Office * 85 South 200 East
Vernal, UT 84078 * (435) 789-1017

DRAWN BY: B.D.	DATE DRAWN: 04-23-15
TAKEN BY: J.V.	REVISED: 00-00-00
LOCATION PHOTOS	PHOTO