

District I
1625 N. French Dr., Hobbs, NM 88240
Phone: (575) 393-6161 Fax: (575) 393-0720
District II
811 S. First St., Artesia, NM 88210
Phone: (575) 748-1283 Fax: (575) 748-9720
District III
1000 Rio Brazos Road, Aztec, NM 87410
Phone: (505) 334-6178 Fax: (505) 334-6170
District IV
1220 S. St. Francis Dr., Santa Fe, NM 87505
Phone: (505) 476-3460 Fax: (505) 476-3462

State of New Mexico
Energy, Minerals & Natural Resources Department
OIL CONSERVATION DIVISION
1220 South St. Francis Dr.
Santa Fe, NM 87505

Form C-102
Revised August 1, 2011
Submit one copy to appropriate
District Office

☐ AMENDED REPORT

WELL LOCATION AND ACREAGE DEDICATION PLAT

¹ API Number 30-025- 43538	² Pool Code 43329	³ Pool Name Maljamar, Grayburg, San Andres
⁴ Property Code 31422	⁵ Property Name MCA UNIT	⁶ Well Number 580
⁷ OGRID No. 217817	⁸ Operator Name ConocoPhillips Company	⁹ Elevation 3935.1'

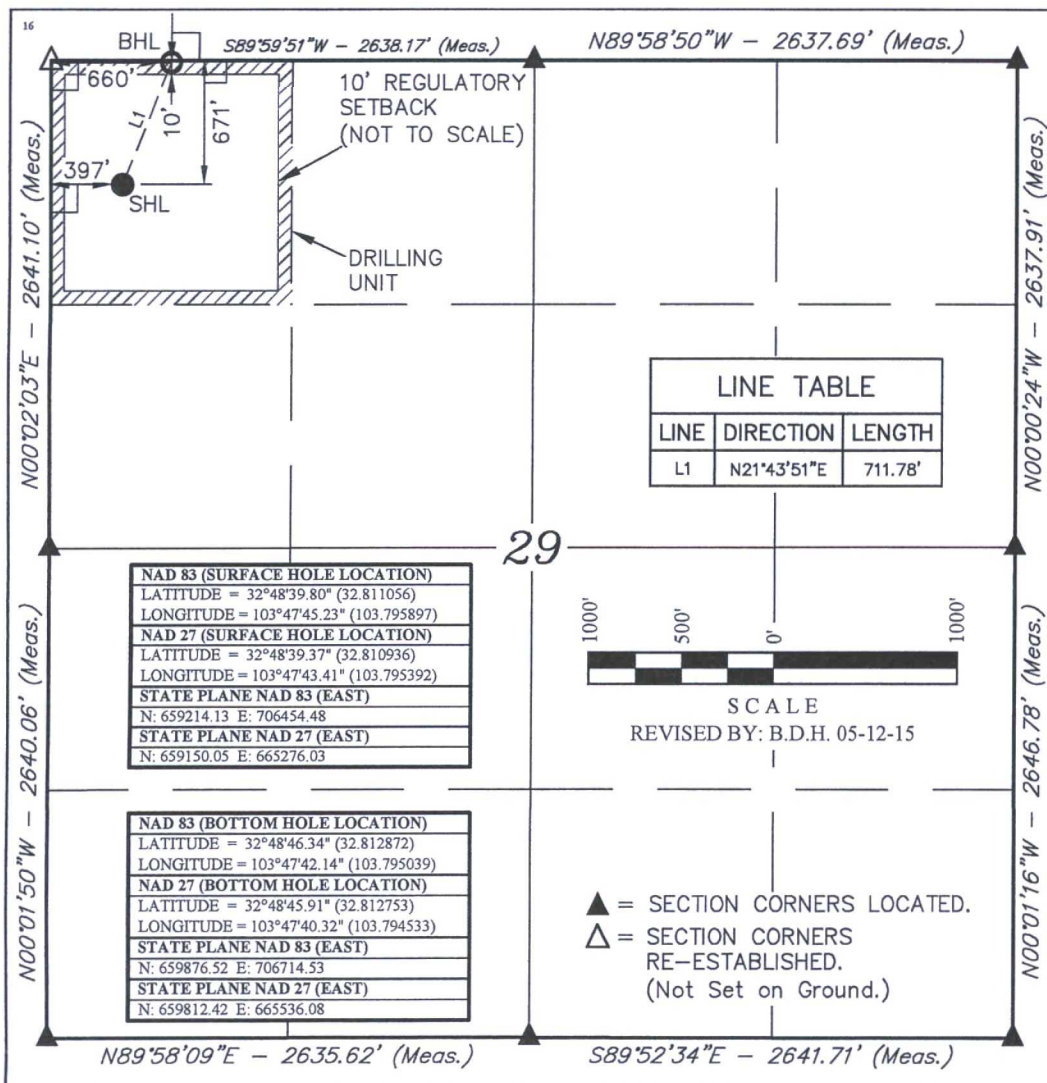
¹⁰ Surface Location

UL or lot no.	Section	Township	Range	Lot Idn	Feet from the	North/South line	Feet from the	East/West line	County
D	29	17 S	32 E		671	NORTH	397	WEST	LEA

¹¹ Bottom Hole Location If Different From Surface

UL or lot no.	Section	Township	Range	Lot Idn	Feet from the	North/South line	Feet from the	East/West line	County
D	29	17 S	32 E		10	NORTH	660	WEST	LEA
¹² Dedicated Acres 40	¹³ Joint or Infill	¹⁴ Consolidation Code	¹⁵ Order No.						

No allowable will be assigned to this completion until all interests have been consolidated or a non-standard unit has been approved by the division.



¹⁷ OPERATOR
CERTIFICATION

I hereby certify that the information contained herein is true and complete to the best of my knowledge and belief, and that this organization either owns a working interest or unleased mineral interest in the land including the proposed bottom hole location or has a right to drill this well at this location pursuant to a contract with an owner of such a mineral or working interest, or to a voluntary pooling agreement or a compulsory pooling order heretofore entered by the division.

Susan B. Maunder 6/26/15
Signature Date

Susan B. Maunder
Printed Name

Susan.B.Maunder@cop.com
E-mail Address

¹⁸ SURVEYOR
CERTIFICATION

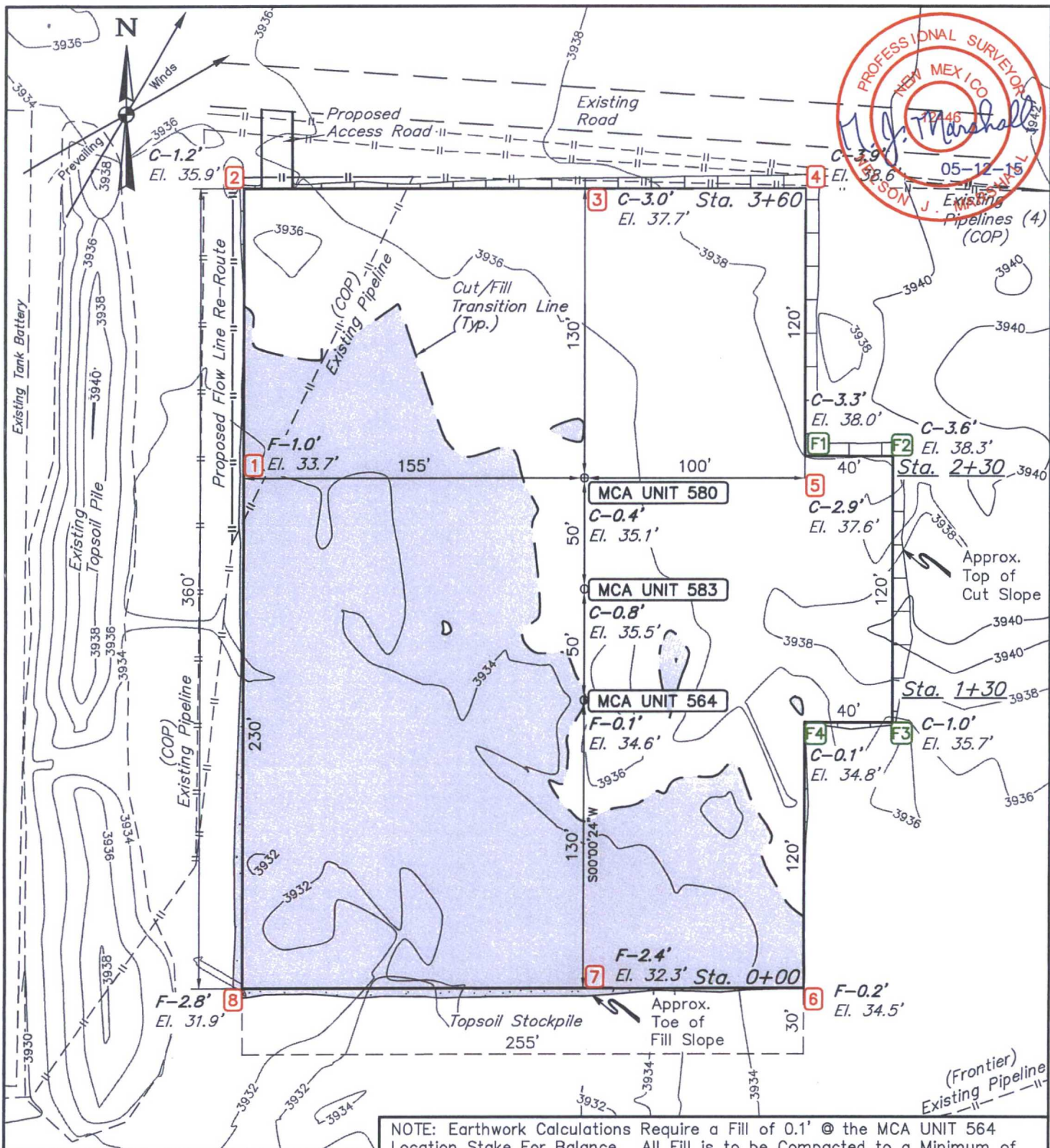
I hereby certify that the well location shown on this plat was plotted from field notes of actual surveys made by me or under my supervision, and that the same is true and correct to the best of my belief.

April 16, 2014

Date of Survey
Signature and Seal of Professional Surveyor:

PROFESSIONAL SURVEYOR
NEW MEXICO
12446
Nelson J. Marshall
05-92-15

Certificate Number:



NOTES:

- Flare pit is to be located a min. of 100' from the wellhead.
- Contours shown at 2' intervals.
- Underground utilities shown on this sheet are for visualization purposes only, actual locations to be determined prior to construction.

ConocoPhillips Company

MCA UNIT 564, 583 & 580
NW 1/4 NW 1/4, SECTION 29, T17S, R32E, N.M.P.M.
LEA COUNTY, NEW MEXICO



UELS, LLC
Corporate Office * 85 South 200 East
Vernal, UT 84078 * (435) 789-1017

DRAWN BY: B.D.H.	DATE DRAWN: 04-27-15
SCALE: 1" = 60'	REVISED: 05-12-15

LOCATION LAYOUT

FIGURE #1

BEGINNING AT THE INTERSECTION OF U.S. HIGHWAY 82 AND MALJAMAR ROAD/COUNTY ROAD 126, PROCEED IN A SOUTHERLY DIRECTION FROM MALJAMAR, NEW MEXICO ALONG MALJAMAR ROAD/COUNTY ROAD 126 APPROXIMATELY 3.3 MILES TO THE JUNCTION OF THIS ROAD AND AN EXISTING ROAD TO THE WEST; TURN RIGHT AND PROCEED IN A WESTERLY, THEN NORTHERLY, THEN WESTERLY DIRECTION APPROXIMATELY 2.1 MILES TO THE JUNCTION OF THIS ROAD AND THE BEGINNING OF THE PROPOSED ACCESS ROAD TO THE SOUTH; FOLLOW ROAD FLAGS IN A SOUTHERLY DIRECTION APPROXIMATELY 33' TO THE PROPOSED LOCATION.

TOTAL DISTANCE FROM MALJAMAR, NEW MEXICO TO THE PROPOSED LOCATION IS APPROXIMATELY 5.4 MILES.

ConocoPhillips Company

MCA UNIT 564, 583 & 580
NW 1/4 NW 1/4, SECTION 29, T17S, R32E, N.M.P.M.
LEA COUNTY, NEW MEXICO



UELS, LLC
Corporate Office * 85 South 200 East
Vernal, UT 84078 * (435) 789-1017

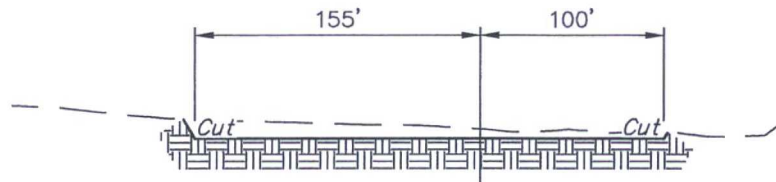
DRAWN BY: B.D.

DATE DRAWN: 04-23-15

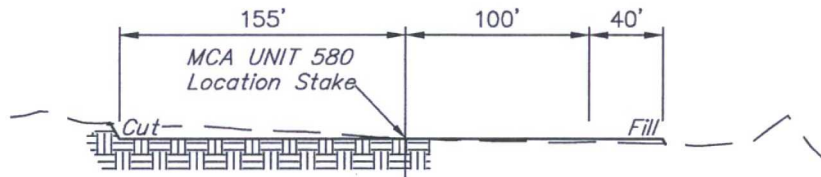
REVISED: 00-00-00

ROAD DESCRIPTION

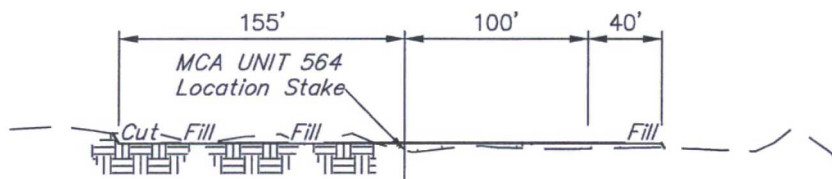
1" = 40'
X-Section
Scale
1" = 100'



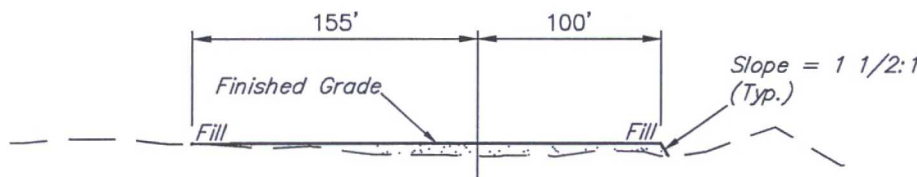
STA. 3+60



STA. 2+30



STA. 1+30



STA. 0+00

APPROXIMATE EARTHWORK QUANTITIES	
(3") TOPSOIL STRIPPING	930 Cu. Yds.
REMAINING LOCATION	2720 Cu. Yds.
TOTAL CUT	3650 Cu. Yds.
FILL	2720 Cu. Yds.
EXCESS MATERIAL	930 Cu. Yds.
TOPSOIL & PIT BACKFILL	930 Cu. Yds.
EXCESS UNBALANCE (After Interim Rehabilitation)	0 Cu. Yds.

APPROXIMATE SURFACE DISTURBANCE AREAS		
	DISTANCE	ACRES
WELL SITE DISTURBANCE	NA	±2.474
30' WIDE ACCESS ROAD R-O-W DISTURBANCE	±32.80'	±0.023
10' WIDE FLOW LINE R-O-W DISTURBANCE	±4350.90'	±0.999
10' WIDE POWER LINE RE-ROUTE R-O-W DISTURBANCE	±291.29'	±0.067
10' WIDE FLOW LINE RE-ROUTE R-O-W DISTURBANCE	±246.29'	±0.057
TOTAL SURFACE USE AREA		±3.620

NOTES:

- Fill quantity includes 5% for compaction.

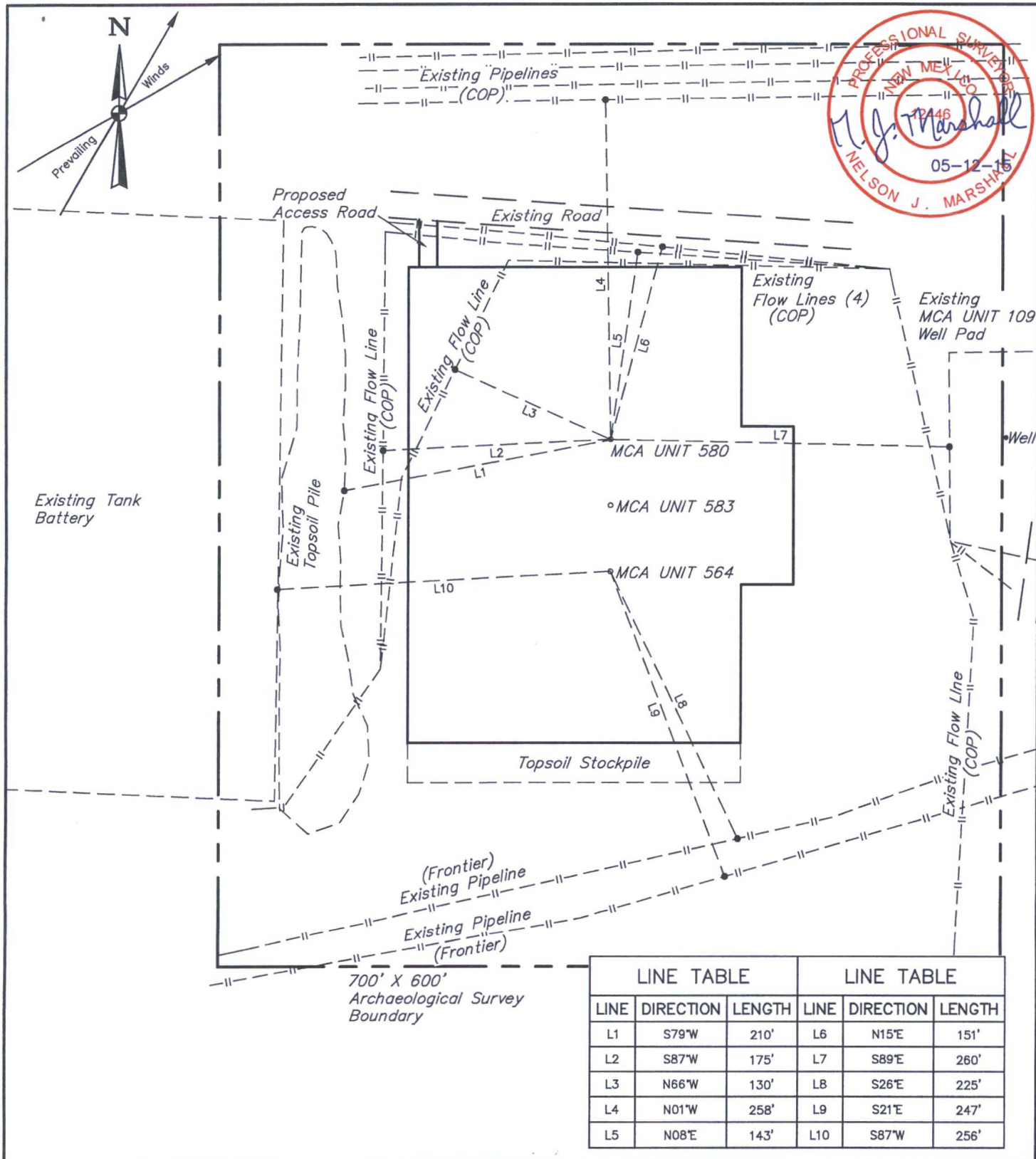
ConocoPhillips Company

MCA UNIT 564, 583 & 580
NW 1/4 NW 1/4, SECTION 29, T17S, R32E, N.M.P.M.
LEA COUNTY, NEW MEXICO



UELS, LLC
Corporate Office * 85 South 200 East
Vernal, UT 84078 * (435) 789-1017

DRAWN BY: B.D.H.	DATE DRAWN: 04-27-15
SCALE: AS SHOWN	REVISED: 05-12-15
TYPICAL CROSS SECTIONS	FIGURE #2



NOTES:

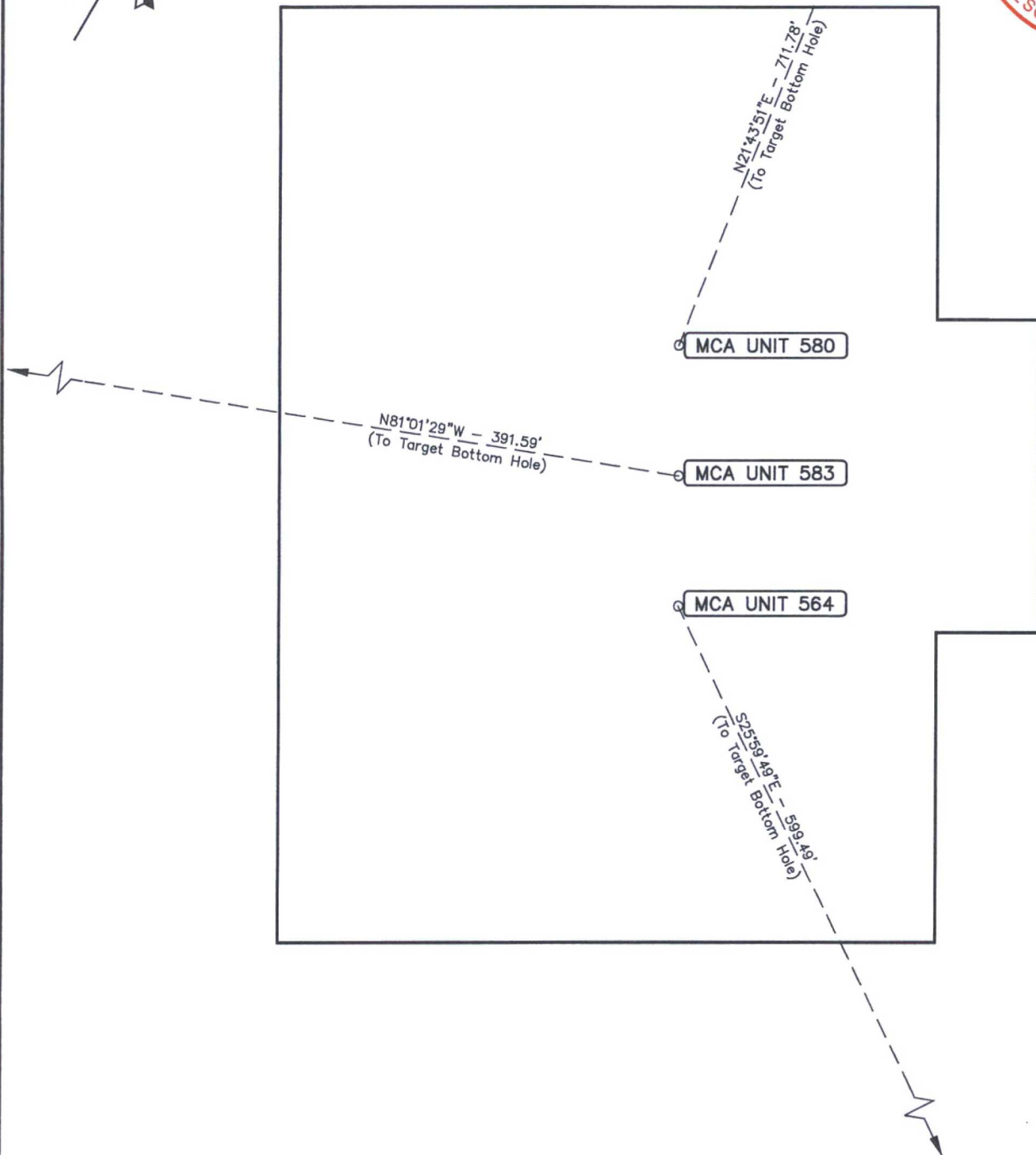
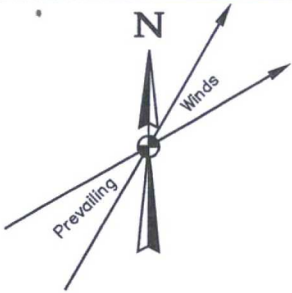
ConocoPhillips Company

MCA UNIT 564, 583 & 580
NW 1/4 NW 1/4, SECTION 29, T17S, R32E, N.M.P.M.
LEA COUNTY, NEW MEXICO

DRAWN BY: B.D.H.	DATE DRAWN: 04-27-15
SCALE: 1" = 100'	REVISED: 05-12-15
ARCHAEOLOGICAL SURVEY BOUNDARY	FIGURE #5



UELS, LLC
 Corporate Office * 85 South 200 East
 Vernal, UT 84078 * (435) 789-1017



ConocoPhillips Company

MCA UNIT 564, 583 & 580
NW 1/4 NW 1/4, SECTION 29, T17S, R32E, N.M.P.M.
LEA COUNTY, NEW MEXICO

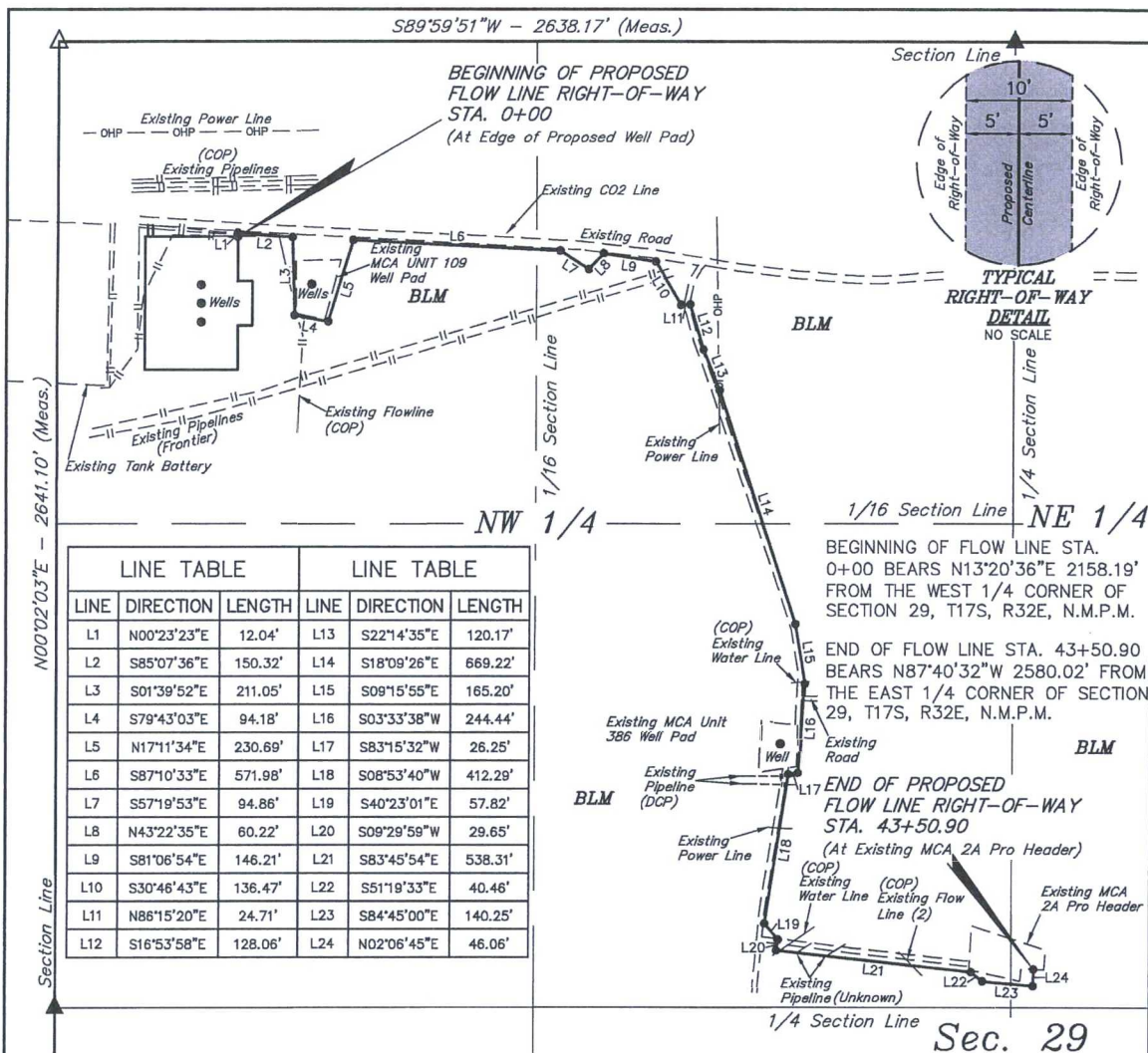


UELS, LLC
Corporate Office * 85 South 200 East
Vernal, UT 84078 * (435) 789-1017

DRAWN BY: B.D.H.	DATE DRAWN: 04-27-15
SCALE: 1" = 60'	REVISED: 05-12-15

MULTI-WELL PLAN

FIGURE #6



FLOW LINE RIGHT-OF-WAY DESCRIPTION

A 10' WIDE RIGHT-OF-WAY 5' ON EACH SIDE OF THE FOLLOWING DESCRIBED CENTERLINE.

BEGINNING AT A POINT IN THE NW 1/4 NW 1/4 OF SECTION 29, T17S, R32E, N.M.P.M., WHICH BEARS N13°20'36"E 2158.19' FROM THE WEST 1/4 CORNER OF SAID SECTION 29, THENCE N00°23'23"E 12.04'; THENCE S85°07'36"E 150.32'; THENCE S01°39'52"E 211.05'; THENCE S79°43'03"E 94.18'; THENCE N17°11'34"E 230.69'; THENCE S87°10'33"E 571.98'; THENCE S57°19'53"E 94.86'; THENCE N43°22'35"E 60.22'; THENCE S81°06'54"E 146.21'; THENCE S30°46'43"E 136.47'; THENCE N86°15'20"E 24.71'; THENCE S16°53'58"E 128.06'; THENCE S22°14'35"E 120.17'; THENCE S18°09'26"E 669.22'; THENCE S09°15'55"E 165.20'; THENCE S03°33'38"W 244.44'; THENCE S83°15'32"W 26.25'; THENCE S08°53'40"W 412.29'; THENCE S40°23'01"E 57.82'; THENCE S09°29'59"W 29.65'; THENCE S83°45'54"E 538.31'; THENCE S51°19'33"E 40.46'; THENCE S84°45'00"E 140.25'; THENCE N02°06'45"E 46.06' TO A POINT IN THE SW 1/4 SE 1/4 OF SAID SECTION 29, WHICH BEARS N87°40'32"W 2580.02' FROM THE EAST 1/4 CORNER OF SAID SECTION 29. THE SIDE LINES OF SAID DESCRIBED RIGHT-OF-WAY BEING SHORTENED OR ELONGATED TO MEET THE GRANTOR'S PROPERTY LINES. BASIS OF BEARINGS IS A G.P.S. OBSERVATION. CONTAINS 0.999 ACRES MORE OR LESS.



ACREAGE / LENGTH TABLE				
	OWNERSHIP	FEET	RODS	ACRES
(SEC. 29 NW 1/4)	BLM	4244.86	257.26	0.975
(SEC. 29 NE 1/4)	BLM	106.04	6.43	0.024
TOTAL		4350.90	263.69	0.999

▲ = SECTION CORNERS LOCATED.

△ = SECTION CORNERS RE-ESTABLISHED.
(Not Set on Ground.)

NOTES:

CERTIFICATE OF PROFESSIONAL SURVEY
THIS IS TO CERTIFY THAT THE ABOVE PLAT WAS PREPARED FROM A FIELD NOTES OF ACTUAL SURVEYS MADE BY ME OR UNDER MY SUPERVISION AND THAT THE SAME ARE TRUE AND CORRECT TO THE BEST OF MY KNOWLEDGE AND BELIEF.

REGISTERED LAND SURVEYOR
REGISTRATION NO. 12446
STATE OF NEW MEXICO
05-05-15

ConocoPhillips Company

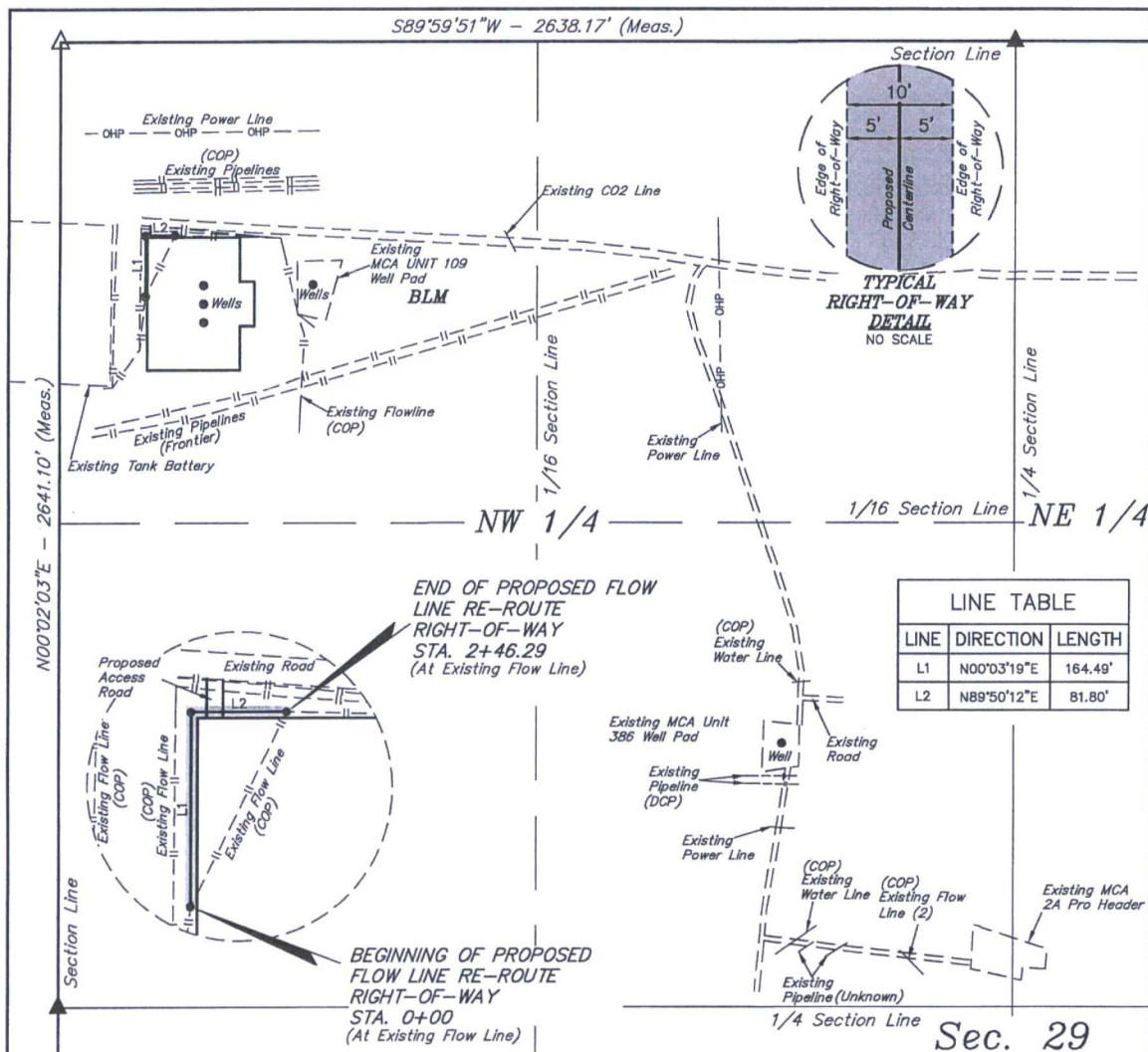
MCA UNIT : ., 583 & 580
SECTION 29, T17S, R32E, N.M.P.M.
LEA COUNTY, NEW MEXICO

DRAWN BY: B.D.H.	DATE DRAWN: 04-28-15
SCALE: 1" = 400'	REVISED: 00-00-00

FLOW LINE R-O-W



UELS, LLC
Corporate Office * 85 South 200 East
Vernal, UT 84078 * (435) 789-1017



FLOW LINE RE-ROUTE RIGHT-OF-WAY DESCRIPTION

A 10' WIDE RIGHT-OF-WAY 5' ON EACH SIDE OF THE FOLLOWING DESCRIBED CENTERLINE.

BEGINNING AT A POINT IN THE NW 1/4 NW 1/4 OF SECTION 29, T17S, R32E, N.M.P.M., WHICH BEARS N06°59'09"E 1955.02' FROM THE WEST 1/4 CORNER OF SAID SECTION 29, THENCE N00°03'19"E 164.49'; THENCE N89°50'12"E 81.80' TO A POINT IN THE NW 1/4 NW 1/4 OF SAID SECTION 29, WHICH BEARS N08°38'09"E 2129.38' FROM THE WEST 1/4 CORNER OF SAID SECTION 18. THE SIDE LINES OF SAID DESCRIBED RIGHT-OF-WAY BEING SHORTENED OR ELONGATED TO MEET THE GRANTOR'S PROPERTY LINES. BASIS OF BEARINGS IS A G.P.S. OBSERVATION. CONTAINS 0.057 ACRES MORE OR LESS.

BEGINNING OF FLOW LINE RE-ROUTE STA. 0+00 BEARS N06°59'09"E 1955.02' FROM THE WEST 1/4 CORNER OF SECTION 29, T17S, R32E, N.M.P.M.

END OF FLOW LINE RE-ROUTE STA. 2+46.29 BEARS N08°38'09"E 2129.38' FROM THE WEST 1/4 CORNER OF SECTION 29, T17S, R32E, N.M.P.M.



ACREAGE / LENGTH TABLE

	OWNERSHIP	FEET	RODS	ACRES
(SEC. 29 NW 1/4)	BLM	246.29	14.93	0.057

▲ = SECTION CORNERS LOCATED.

△ = SECTION CORNERS RE-ESTABLISHED.
(Not Set on Ground.)

NOTES:

CERTIFICATE OF PROFESSIONAL SURVEY
THIS IS TO CERTIFY THAT THE ABOVE PLAT WAS PREPARED FROM A FIELD NOTES OF ACTUAL SURVEYS MADE BY ME OR UNDER MY SUPERVISION AND THAT THE SAME ARE TRUE AND CORRECT TO THE BEST OF MY KNOWLEDGE AND BELIEF.

12446
Nelson J. Marshall
REGISTERED LAND SURVEYOR
REGISTRATION NO. 12446
STATE OF NEW MEXICO
05-05-15

ConocoPhillips Company

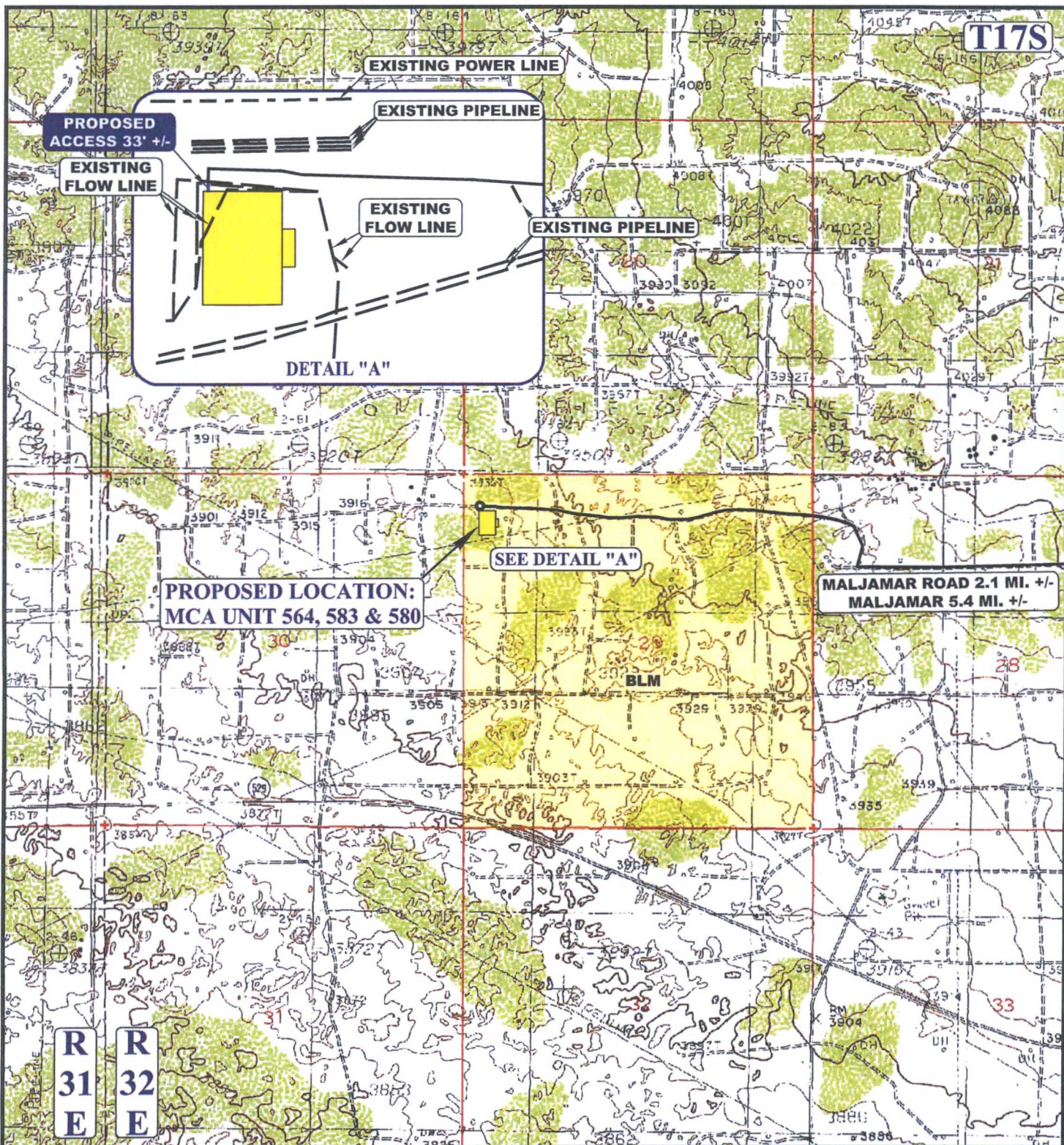
MCA UNIT 564, 583 & 580
SECTION 29, T17S, R32E, N.M.P.M.
LEA COUNTY, NEW MEXICO

DRAWN BY: B.D.H. DATE DRAWN: 04-28-15
SCALE: 1" = 400' REVISED: 00-00-00

FLOW LINE RE-ROUTE R-O-W



UELS, LLC
Corporate Office * 85 South 200 East
Vernal, UT 84078 * (435) 789-1017



NOTE: PARCEL DATA SHOWN HAS BEEN OBTAINED FROM VARIOUS SOURCES AND SHOULD BE USED FOR MAPPING, GRAPHIC AND PLANNING PURPOSES ONLY. NO WARRANTY IS MADE BY UTAH ENGINEERING AND LAND SURVEYING (UELS) FOR ACCURACY OF THE PARCEL DATA.

LEGEND:

--- EXISTING ROAD
 --- PROPOSED ROAD
 --- EXISTING POWER LINE
 --- EXISTING WATER LINE
 --- EXISTING PIPELINE
 --- EXISTING FLOW LINE

ConocoPhillips Company

MCA UNIT 564, 583 & 580
 NW 1/4 NW 1/4, SECTION 29, T17S, R32E, N.M.P.M.
 LEA COUNTY, NEW MEXICO



DRAWN BY: B.D.

DATE DRAWN: 04-23-15

SCALE: 1" = 2000'

REVISED: 00-00-00

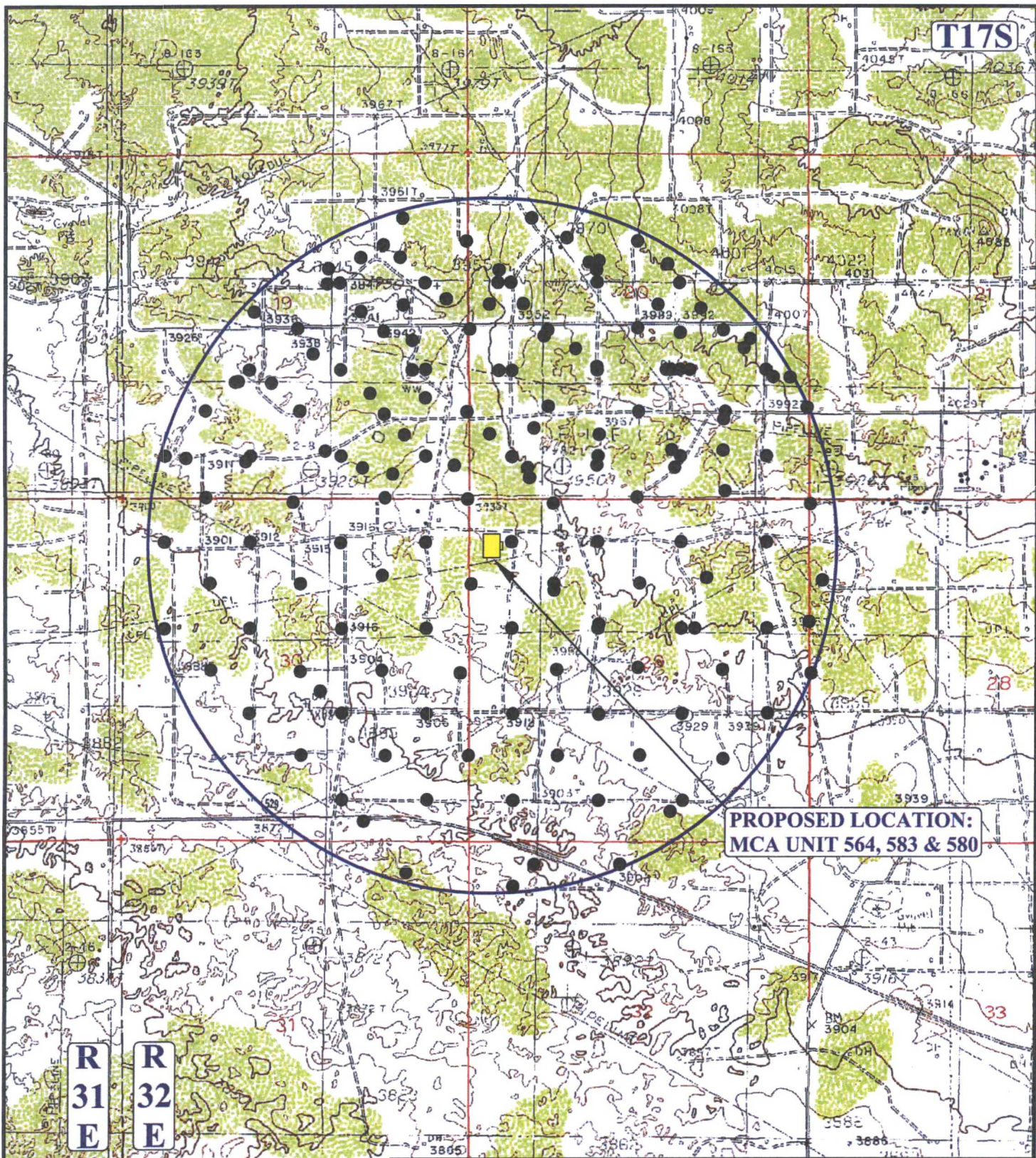
ACCESS ROAD MAP

TOPO B



UELS, LLC

Corporate Office * 85 South 200 East
 Vernal, UT 84078 * (435) 789-1017



PROPOSED LOCATION:
MCA UNIT 564, 583 & 580

LEGEND:

- PRODUCING WELLS



UELS, LLC
Corporate Office * 85 South 200 East
Vernal, UT 84078 * (435) 789-1017



ConocoPhillips Company

MCA UNIT 564, 583 & 580
NW 1/4 NW 1/4, SECTION 29, T17S, R32E, N.M.P.M.
LEA COUNTY, NEW MEXICO

DRAWN BY: B.D.

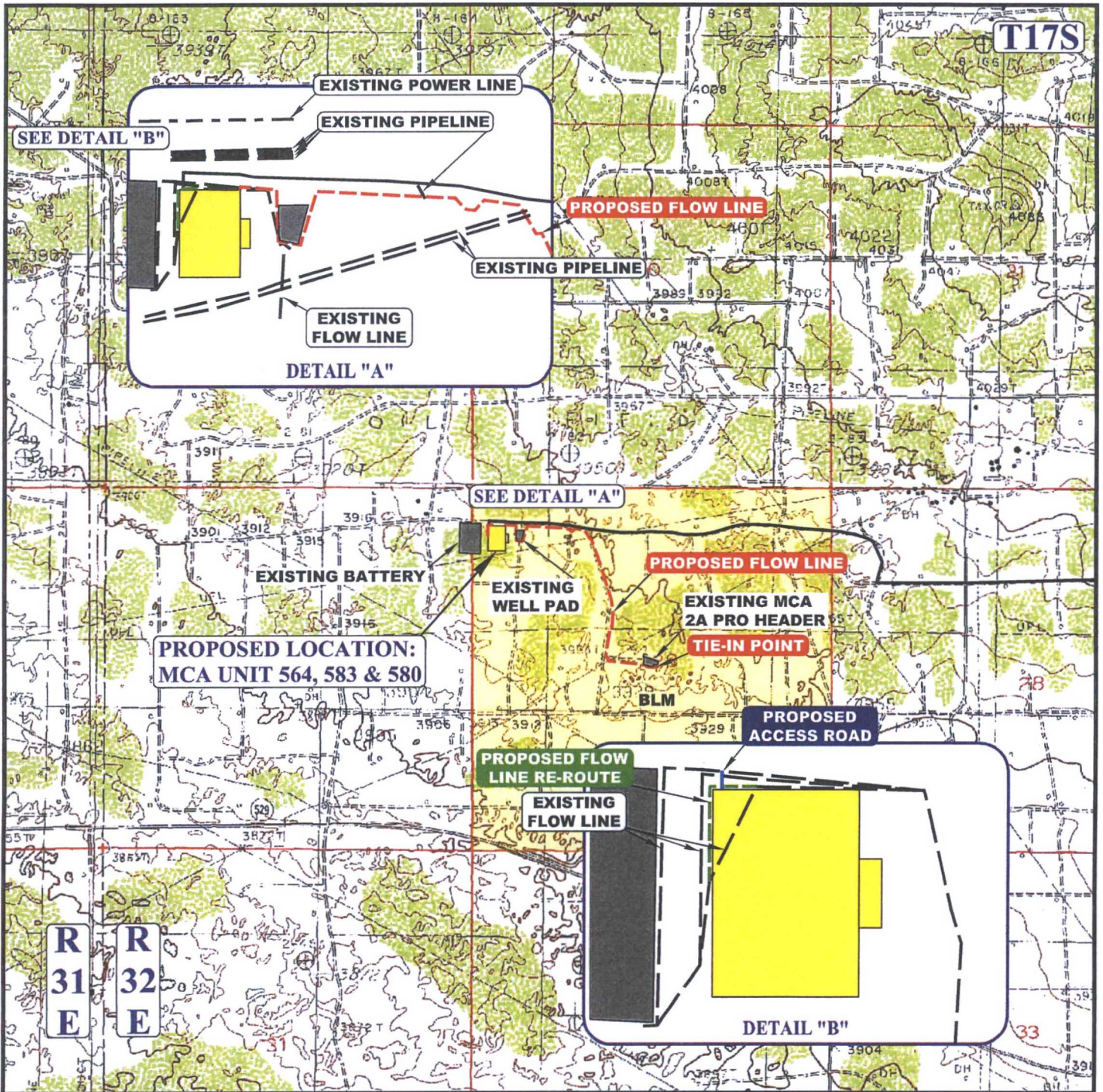
DATE DRAWN: 04-23-15

SCALE: 1" = 2000'

REVISED: 00-00-00

WELL PROXIMITY MAP

TOPO C



APPROXIMATE TOTAL FLOW LINE RE-ROUTE DISTANCE = 246' +/-

APPROXIMATE TOTAL FLOW LINE DISTANCE = 4351' +/-

NOTE: PARCEL DATA SHOWN HAS BEEN OBTAINED FROM VARIOUS SOURCES AND SHOULD BE USED FOR MAPPING, GRAPHIC AND PLANNING PURPOSES ONLY. NO WARRANTY IS MADE BY UINTAH ENGINEERING AND LAND SURVEYING (UELS) FOR ACCURACY OF THE PARCEL DATA.

LEGEND:

--- EXISTING ROAD
 --- PROPOSED FLOW LINE
 --- PROPOSED ROAD
 --- EXISTING POWER LINE
 --- EXISTING PIPELINE
 --- EXISTING WATER LINE
 --- PROPOSED FLOW LINE RE-ROUTE

ConocoPhillips Company

MCA UNIT : 583 & 580
 NW 1/4 NW 1/4, SECTION 29, T17S, R32E, N.M.P.M.
 LEA COUNTY, NEW MEXICO



DRAWN BY: B.D.

DATE DRAWN: 04-23-15

SCALE: 1" = 2000'

REVISED: 00-00-00

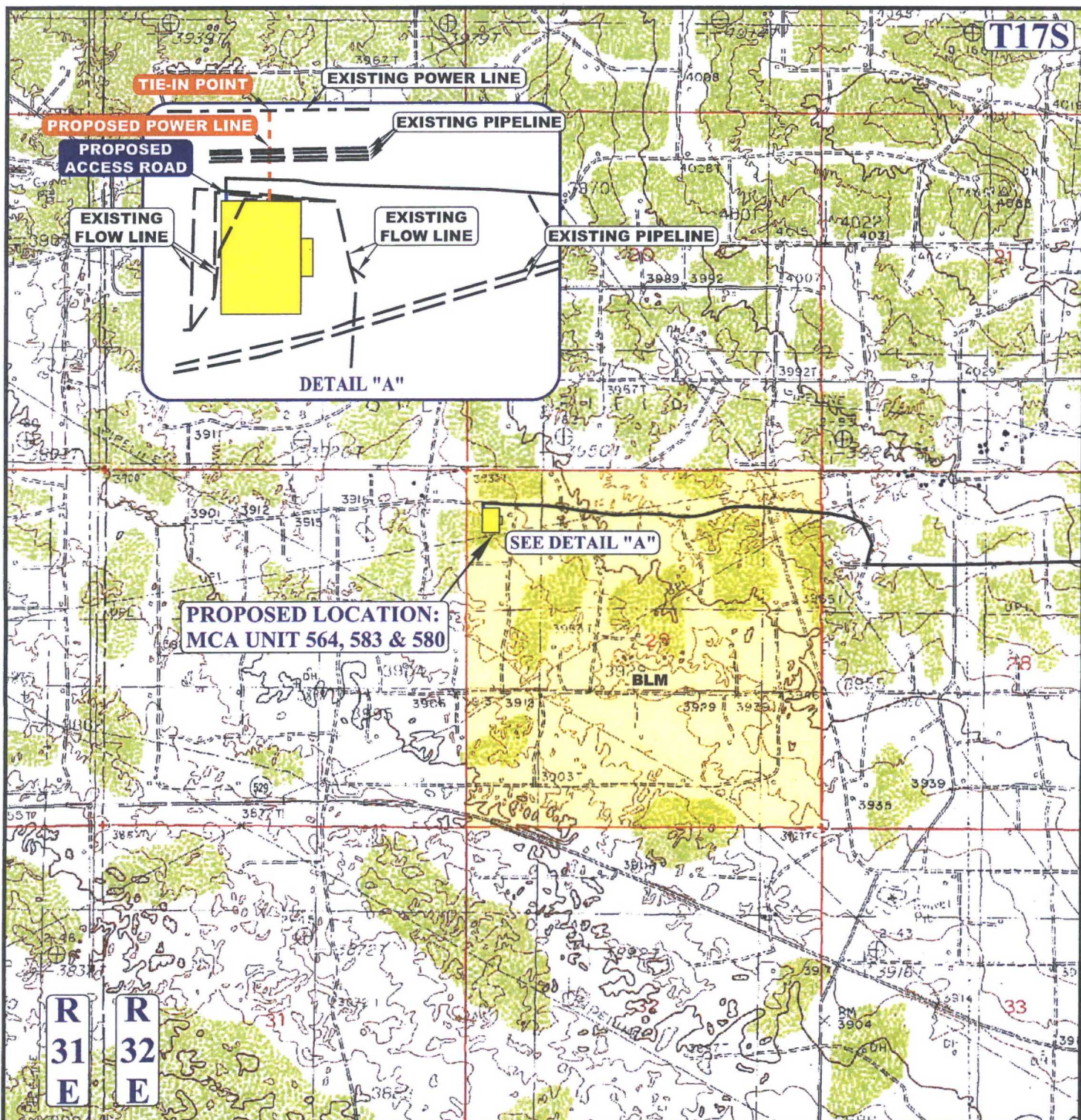
FLOW LINE MAP

TOPO D



UELS, LLC

Corporate Office * 85 South 200 East
 Vernal, UT 84078 * (435) 789-1017



APPROXIMATE TOTAL POWER LINE DISTANCE = 291' +/-

NOTE: PARCEL DATA SHOWN HAS BEEN OBTAINED FROM VARIOUS SOURCES AND SHOULD BE USED FOR MAPPING, GRAPHIC AND PLANNING PURPOSES ONLY. NO WARRANTY IS MADE BY UTAH ENGINEERING AND LAND SURVEYING (UELS) FOR ACCURACY OF THE PARCEL DATA.

LEGEND:

- EXISTING ROAD
- PROPOSED ROAD
- PROPOSED POWER LINE
- EXISTING POWER LINE
- EXISTING PIPELINE
- EXISTING WATER LINE

ConocoPhillips Company

MCA UNIT 564, 583 & 580
NW 1/4 NW 1/4, SECTION 29, T17S, R32E, N.M.P.M.
LEA COUNTY, NEW MEXICO

DRAWN BY: B.D.

DATE DRAWN: 04-23-15

SCALE: 1" = 2000'

REVISED: 00-00-00

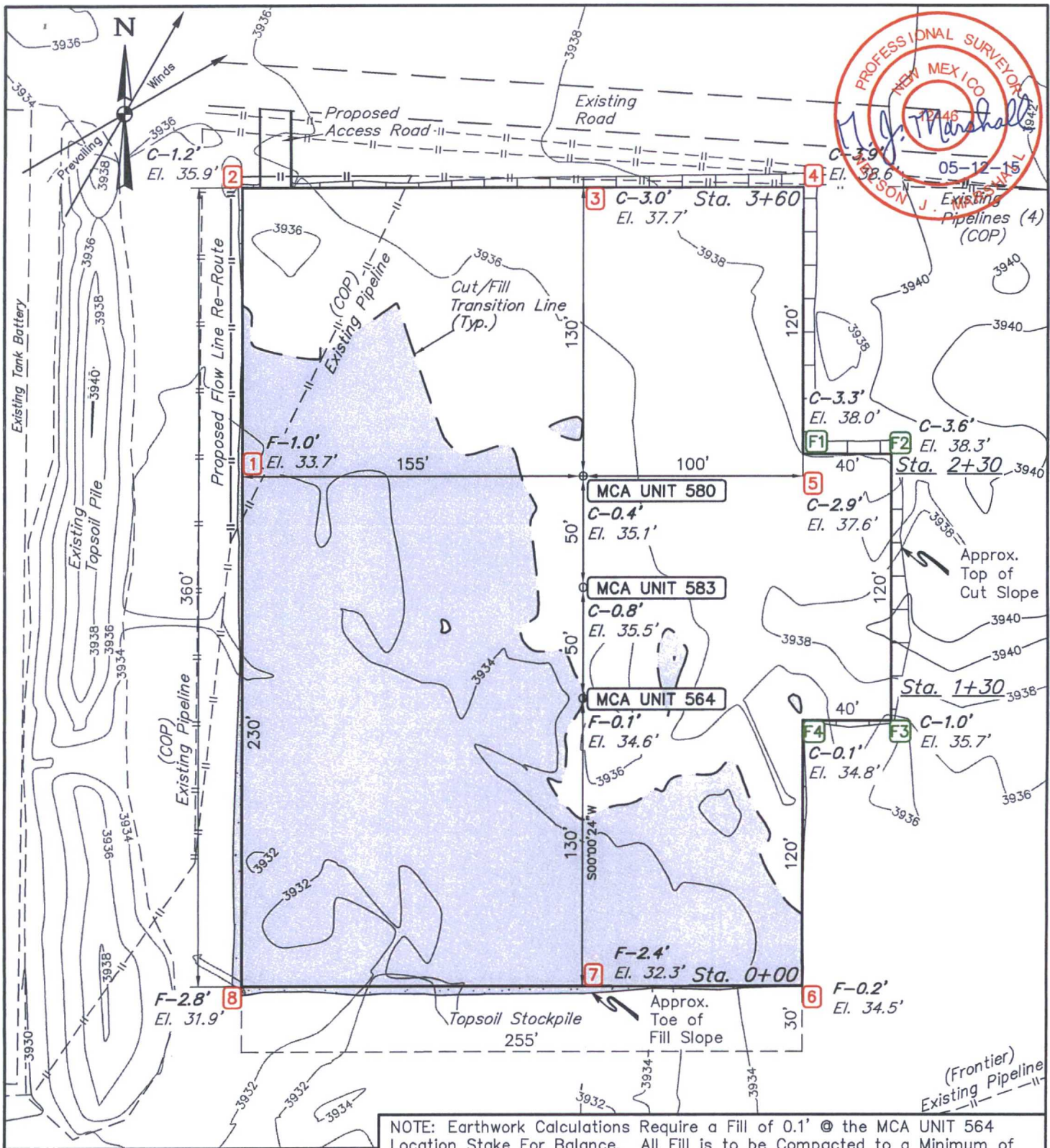
POWER LINE MAP

TOPO E



UELS, LLC
Corporate Office * 85 South 200 East
Vernal, UT 84078 * (435) 789-1017





FINISHED GRADE ELEVATION = 3934.7'

NOTES:

- Flare pit is to be located a min. of 100' from the wellhead.
- Contours shown at 2' intervals.
- Underground utilities shown on this sheet are for visualization purposes only, actual locations to be determined prior to construction.

NOTE: Earthwork Calculations Require a Fill of 0.1' @ the MCA UNIT 564 Location Stake For Balance. All Fill is to be Compacted to a Minimum of 95% of the Maximum Dry Density Obtained by AASHTO Method t-99.

ConocoPhillips Company

MCA UNIT 564, 583 & 580
NW 1/4 NW 1/4, SECTION 29, T17S, R32E, N.M.P.M.
LEA COUNTY, NEW MEXICO



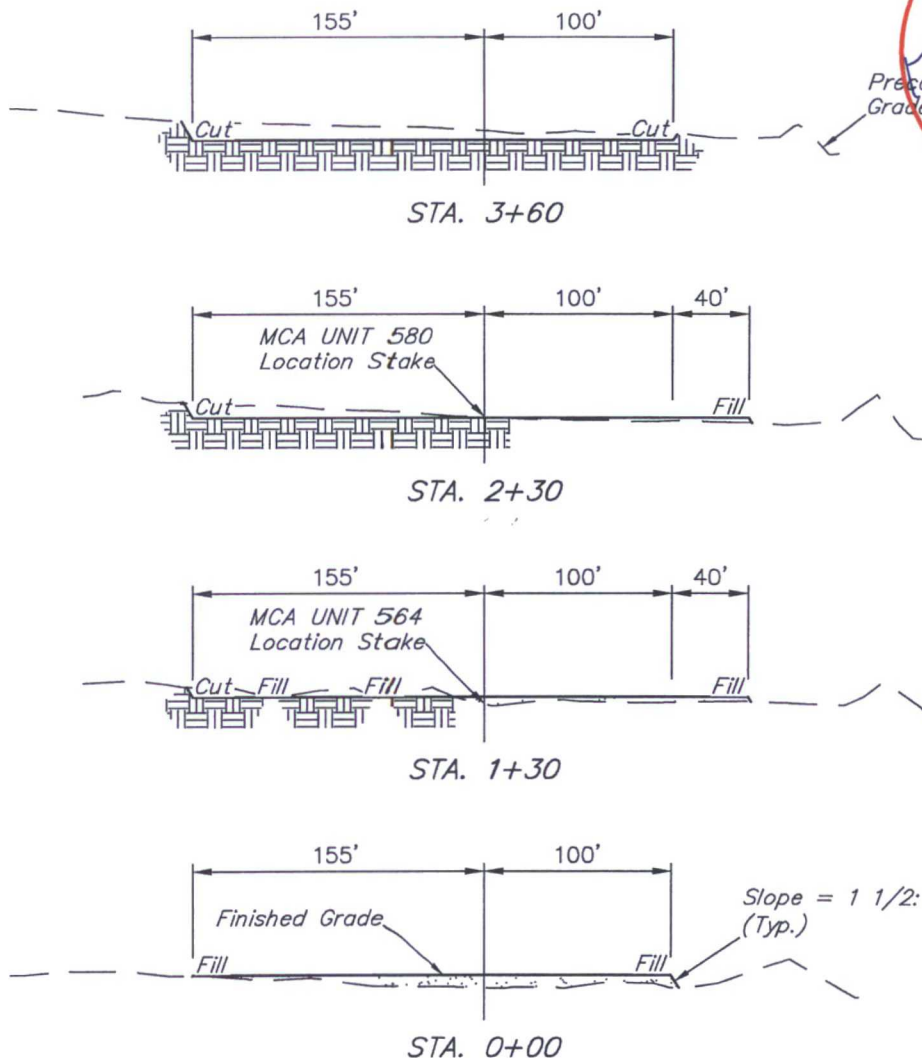
UELS, LLC
Corporate Office * 85 South 200 East
Vernal, UT 84078 * (435) 789-1017

DRAWN BY: B.D.H.	DATE DRAWN: 04-27-15
SCALE: 1" = 60'	REVISED: 05-12-15

LOCATION LAYOUT

FIGURE #1

1" = 40'
X-Section
Scale
1" = 100'



APPROXIMATE EARTHWORK QUANTITIES	
(3") TOPSOIL STRIPPING	930 Cu. Yds.
REMAINING LOCATION	2720 Cu. Yds.
TOTAL CUT	3650 Cu. Yds.
FILL	2720 Cu. Yds.
EXCESS MATERIAL	930 Cu. Yds.
TOPSOIL & PIT BACKFILL	930 Cu. Yds.
EXCESS UNBALANCE (After Interim Rehabilitation)	0 Cu. Yds.

APPROXIMATE SURFACE DISTURBANCE AREAS		
	DISTANCE	ACRES
WELL SITE DISTURBANCE	NA	±2.474
30' WIDE ACCESS ROAD R-O-W DISTURBANCE	±32.80'	±0.023
10' WIDE FLOW LINE R-O-W DISTURBANCE	±4350.90'	±0.999
10' WIDE POWER LINE RE-ROUTE R-O-W DISTURBANCE	±291.29'	±0.067
10' WIDE FLOW LINE RE-ROUTE R-O-W DISTURBANCE	±246.29'	±0.057
TOTAL SURFACE USE AREA		±3.620

NOTES:

- Fill quantity includes 5% for compaction.

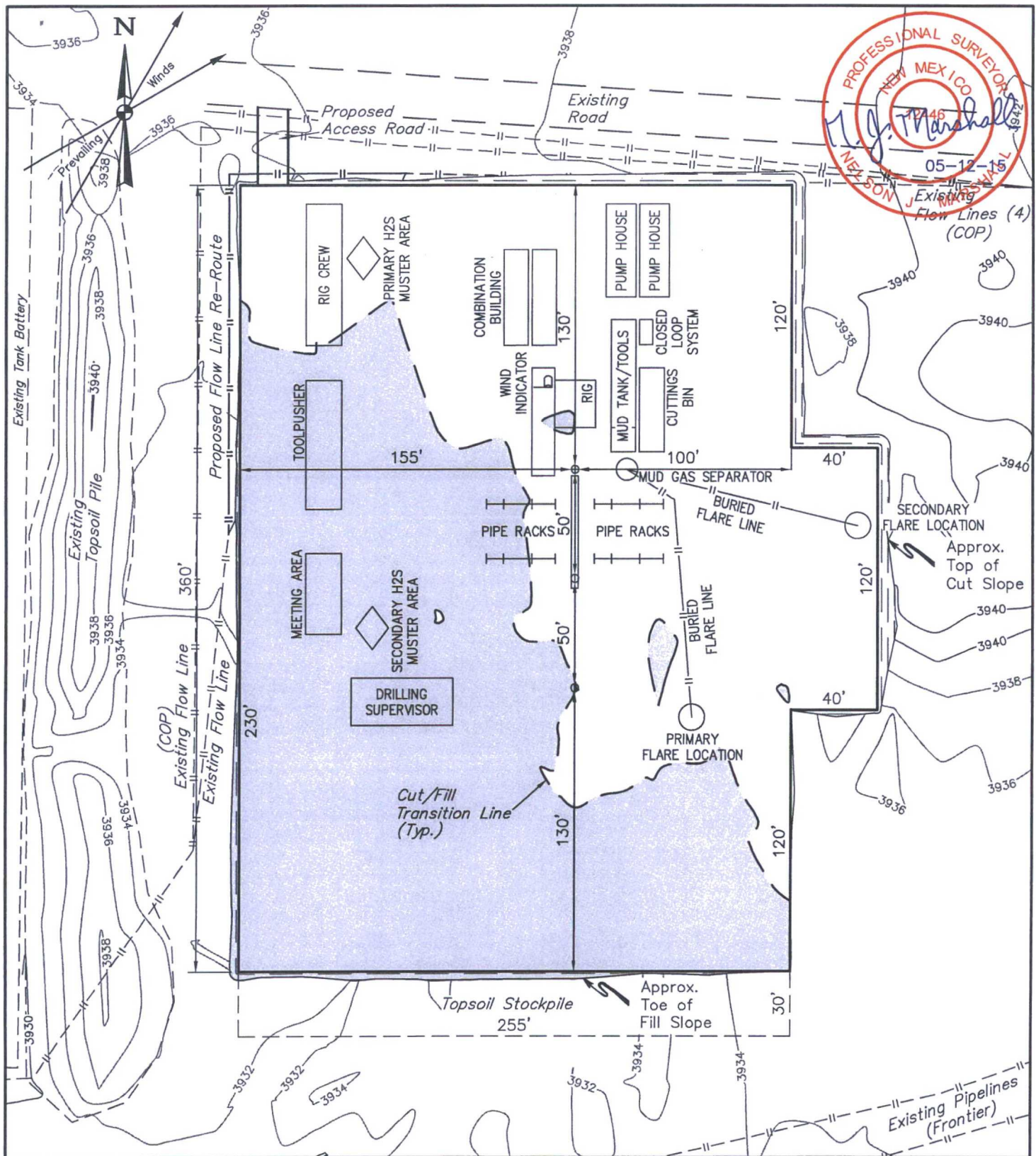
ConocoPhillips Company

MCA UNIT 564, 583 & 580
NW 1/4 NW 1/4, SECTION 29, T17S, R32E, N.M.P.M.
LEA COUNTY, NEW MEXICO



UELS, LLC
Corporate Office * 85 South 200 East
Vernal, UT 84078 * (435) 789-1017

DRAWN BY: B.D.H.	DATE DRAWN: 04-27-15
SCALE: AS SHOWN	REVISED: 05-12-15
TYPICAL CROSS SECTIONS	
FIGURE #2	



NOTES:

- Flare pit is to be located a min. of 160' from the wellhead.
- Contours shown at 2' intervals.
- May have different number of Pump House and Combination Buildings.

ConocoPhillips Company

MCA UNIT 564, 583 & 580
NW 1/4 NW 1/4, SECTION 29, T17S, R32E, N.M.P.M.
LEA COUNTY, NEW MEXICO

DRAWN BY: B.D.H.

DATE DRAWN: 04-27-15

SCALE: 1" = 60'

REVISED: 05-12-15

TYPICAL RIG LAYOUT

FIGURE #3



UELS, LLC
 Corporate Office * 85 South 200 East
 Vernal, UT 84078 * (435) 789-1017