

District I  
1625 N. French Dr., Hobbs, NM 88240  
Phone: (575) 393-6161 Fax: (575) 393-0920  
District II  
811 S. First St., Artesia, NM 88210  
Phone: (575) 748-1283 Fax: (575) 748-9720  
District III  
1000 Rio Brazos Road, Aztec, NM 87410  
Phone: (505) 334-6178 Fax: (505) 334-6170  
District IV  
1220 S. St. Francis Dr., Santa Fe, NM 87505  
Phone: (505) 476-3460 Fax: (505) 476-3462

State of New Mexico  
Energy, Minerals & Natural Resources Department  
OIL CONSERVATION DIVISION  
1220 South St. Francis Dr.  
Santa Fe, NM 87505

Form C-102  
Revised August 1, 2011  
Submit one copy to appropriate  
District Office

☐ AMENDED REPORT

WELL LOCATION AND ACREAGE DEDICATION PLAT

<sup>1</sup> API Number 30-025- <b>43539</b>	<sup>2</sup> Pool Code 43329	<sup>3</sup> Pool Name Maljamar, Grayburg, San Andres
<sup>4</sup> Property Code <b>31522</b>	<sup>5</sup> Property Name MCA UNIT	<sup>6</sup> Well Number 583
<sup>7</sup> OGRID No. 217817	<sup>8</sup> Operator Name ConocoPhillips Company	<sup>9</sup> Elevation 3935.5'

<sup>10</sup> Surface Location

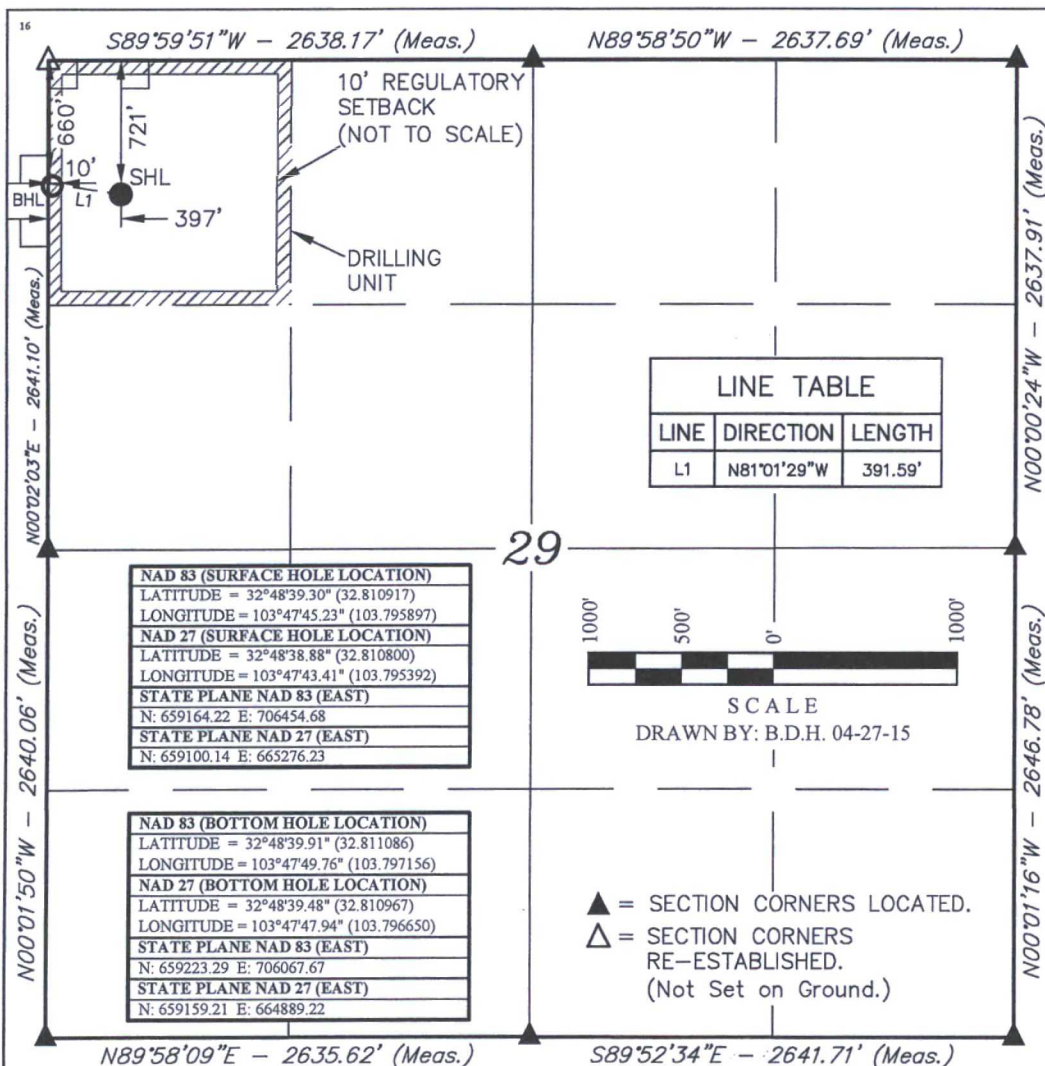
UL or lot no. D	Section 29	Township 17 S	Range 32 E	Lot Idn	Feet from the 721	North/South line NORTH	Feet from the 397	East/West line WEST	County LEA
--------------------	---------------	------------------	---------------	---------	----------------------	---------------------------	----------------------	------------------------	---------------

<sup>11</sup> Bottom Hole Location If Different From Surface

UL or lot no. D	Section 29	Township 17 S	Range 32 E	Lot Idn	Feet from the 660	North/South line NORTH	Feet from the 10	East/West line WEST	County LEA
--------------------	---------------	------------------	---------------	---------	----------------------	---------------------------	---------------------	------------------------	---------------

<sup>12</sup> Dedicated Acres 40	<sup>13</sup> Joint or Infill	<sup>14</sup> Consolidation Code	<sup>15</sup> Order No.
-------------------------------------	-------------------------------	----------------------------------	-------------------------

No allowable will be assigned to this completion until all interests have been consolidated or a non-standard unit has been approved by the division.



<sup>17</sup> OPERATOR CERTIFICATION

I hereby certify that the information contained herein is true and complete to the best of my knowledge and belief, and that this organization either owns a working interest or unleased mineral interest in the land including the proposed bottom hole location or has a right to drill this well at this location pursuant to a contract with an owner of such a mineral or working interest, or to a voluntary pooling agreement or a compulsory pooling order heretofore entered by the division.

*Susan B. Maunder* 4/26/15  
Signature Date

Susan B. Maunder  
Printed Name

Susan.B.Maunder@cop.com  
E-mail Address

<sup>18</sup> SURVEYOR CERTIFICATION

I hereby certify that the well location shown on this plat was plotted from field notes of actual surveys made by me or under my supervision, and that the same is true and correct to the best of my belief.

April 16, 2014

Date of Survey

Signature and Seal of Professional Surveyor:

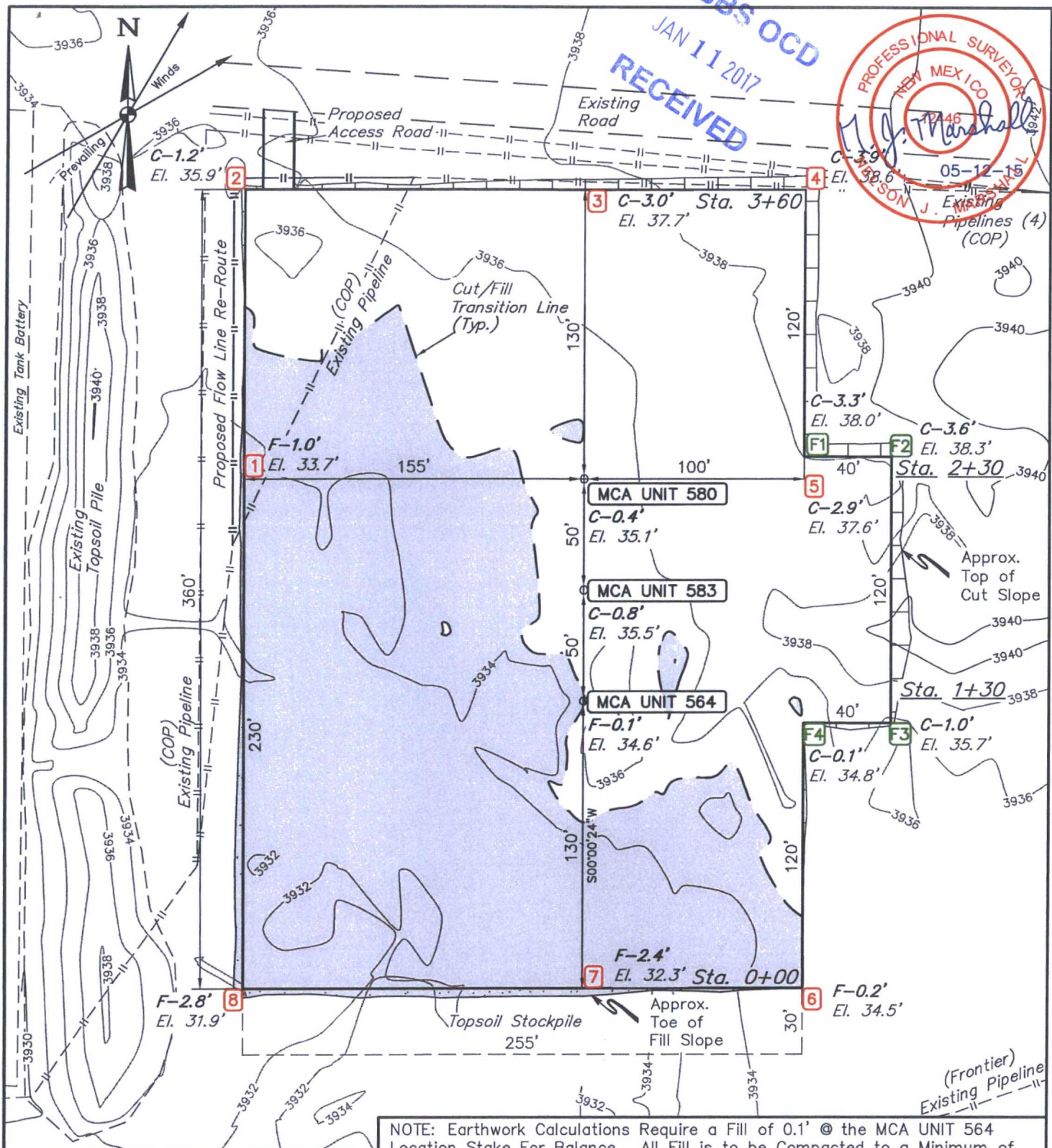


Certificate Number:



HOBBS OCD  
JAN 11 2017

RECEIVED



NOTE: Earthwork Calculations Require a Fill of 0.1' @ the MCA UNIT 564 Location Stake For Balance. All Fill is to be Compacted to a Minimum of 95% of the Maximum Dry Density Obtained by AASHTO Method t-99.

FINISHED GRADE ELEVATION = 3934.7'

NOTES:

- Flare pit is to be located a min. of 100' from the wellhead.
- Contours shown at 2' intervals.
- Underground utilities shown on this sheet are for visualization purposes only, actual locations to be determined prior to construction.

ConocoPhillips Company

MCA UNIT 564, 583 & 580  
NW 1/4 NW 1/4, SECTION 29, T17S, R32E, N.M.P.M.  
LEA COUNTY, NEW MEXICO

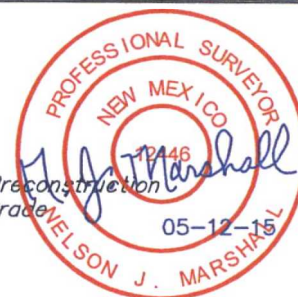
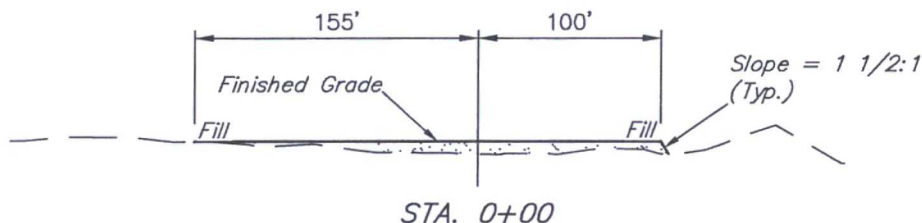
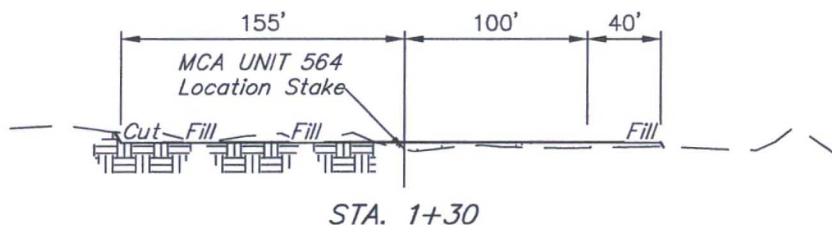
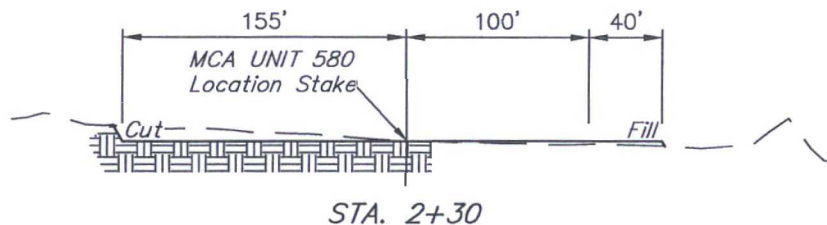
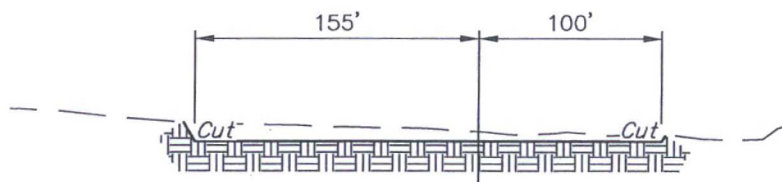


UELS, LLC  
Corporate Office \* 85 South 200 East  
Vernal, UT 84078 \* (435) 789-1017

DRAWN BY: B.D.H.	DATE DRAWN: 04-27-15
SCALE: 1" = 60'	REVISED: 05-12-15
LOCATION LAYOUT	FIGURE #1



1" = 40'  
X-Section Scale  
1" = 100'



APPROXIMATE EARTHWORK QUANTITIES	
(3") TOPSOIL STRIPPING	930 Cu. Yds.
REMAINING LOCATION	2720 Cu. Yds.
<b>TOTAL CUT</b>	<b>3650 Cu. Yds.</b>
<b>FILL</b>	<b>2720 Cu. Yds.</b>
EXCESS MATERIAL	930 Cu. Yds.
TOPSOIL & PIT BACKFILL	930 Cu. Yds.
<b>EXCESS UNBALANCE</b> (After Interim Rehabilitation)	<b>0 Cu. Yds.</b>

APPROXIMATE SURFACE DISTURBANCE AREAS		
	DISTANCE	ACRES
WELL SITE DISTURBANCE	NA	±2.474
30' WIDE ACCESS ROAD R-O-W DISTURBANCE	±32.80'	±0.023
10' WIDE FLOW LINE R-O-W DISTURBANCE	±4350.90'	±0.999
10' WIDE POWER LINE RE-ROUTE R-O-W DISTURBANCE	±291.29'	±0.067
10' WIDE FLOW LINE RE-ROUTE R-O-W DISTURBANCE	±246.29'	±0.057
<b>TOTAL SURFACE USE AREA</b>		<b>±3.620</b>

#### NOTES:

- Fill quantity includes 5% for compaction.

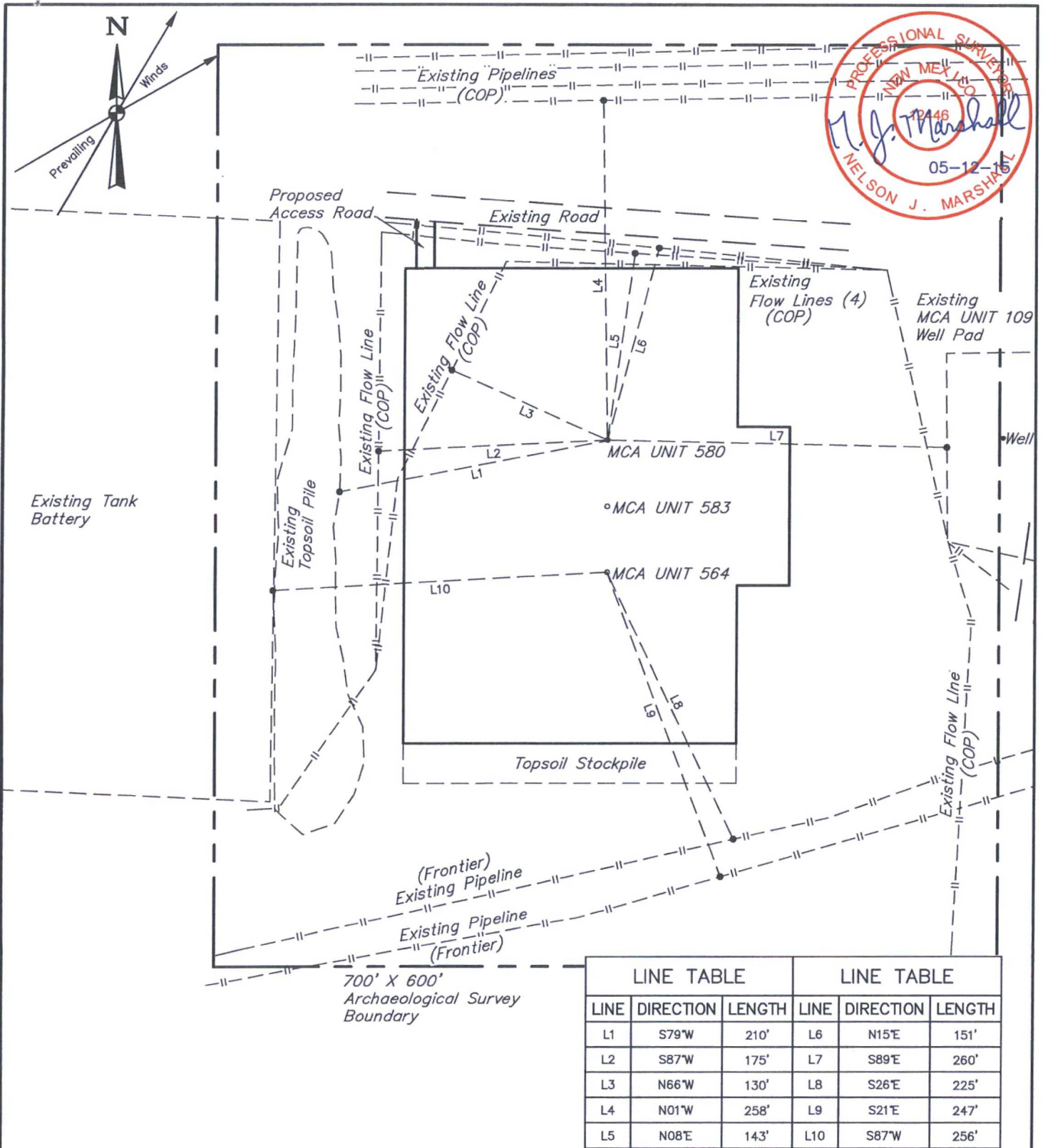
#### ConocoPhillips Company

MCA UNIT 564, 583 & 580  
NW 1/4 NW 1/4, SECTION 29, T17S, R32E, N.M.P.M.  
LEA COUNTY, NEW MEXICO



UELS, LLC  
Corporate Office \* 85 South 200 East  
Vernal, UT 84078 \* (435) 789-1017

DRAWN BY: B.D.H.	DATE DRAWN: 04-27-15
SCALE: AS SHOWN	REVISED: 05-12-15
<b>TYPICAL CROSS SECTIONS</b>	<b>FIGURE #2</b>



**NOTES:**

**ConocoPhillips Company**

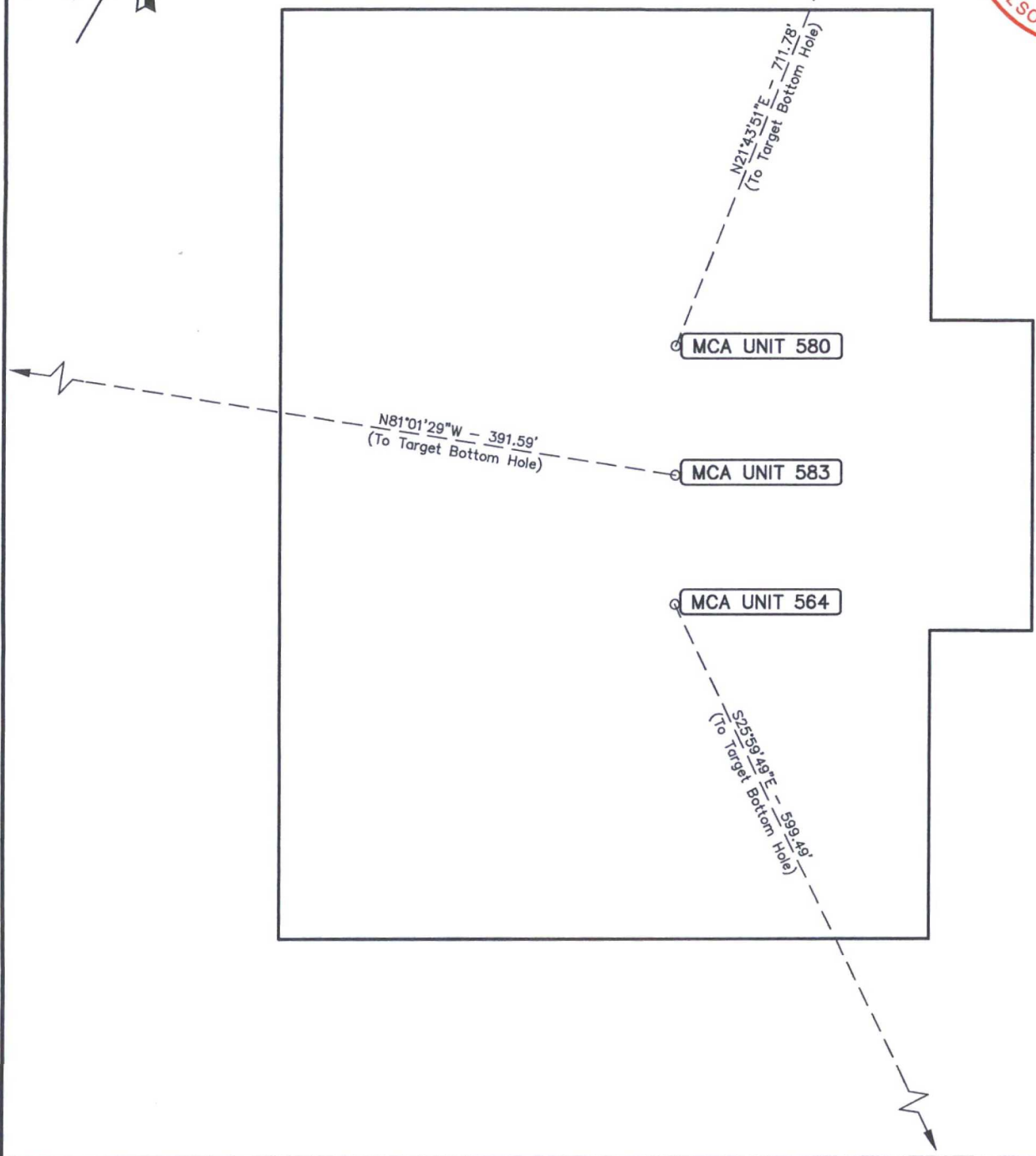
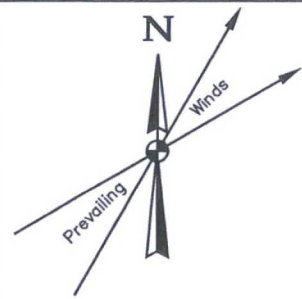
**MCA UNIT 564, 583 & 580  
NW 1/4 NW 1/4, SECTION 29, T17S, R32E, N.M.P.M.  
LEA COUNTY, NEW MEXICO**



**UELS, LLC**  
Corporate Office \* 85 South 200 East  
Vernal, UT 84078 \* (435) 789-1017

DRAWN BY: B.D.H.	DATE DRAWN: 04-27-15
SCALE: 1" = 100'	REVISED: 05-12-15
ARCHAEOLOGICAL SURVEY BOUNDARY	FIGURE #5





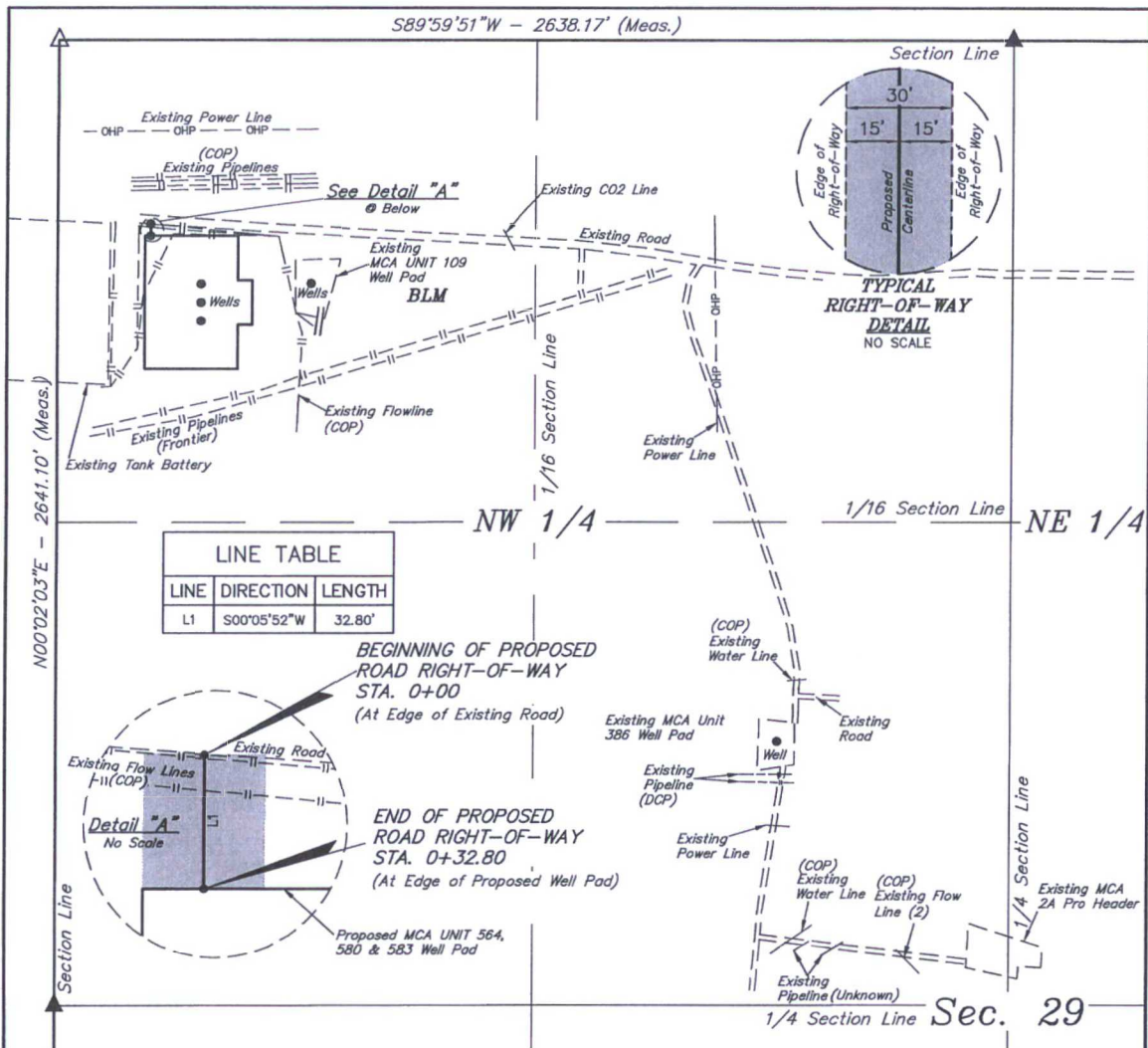
ConocoPhillips Company

MCA UNIT 564, 583 & 580  
NW 1/4 NW 1/4, SECTION 29, T17S, R32E, N.M.P.M.  
LEA COUNTY, NEW MEXICO



UELS, LLC  
Corporate Office \* 85 South 200 East  
Vernal, UT 84078 \* (435) 789-1017

DRAWN BY: B.D.H.	DATE DRAWN: 04-27-15
SCALE: 1" = 60'	REVISED: 05-12-15
<b>MULTI-WELL PLAN</b>	<b>FIGURE #6</b>



A 30' WIDE RIGHT-OF-WAY 15' ON EACH SIDE OF THE FOLLOWING DESCRIBED CENTERLINE.

BEGINNING AT A POINT IN THE NW 1/4 NW 1/4 OF SECTION 29, T17S, R32E, N.M.P.M., WHICH BEARS N06°53'55"E 2148.33' FROM THE WEST 1/4 CORNER OF SAID SECTION 29, THENCE S00°05'52"W 32.80' TO A POINT IN THE NW 1/4 NW 1/4 OF SAID SECTION 29, WHICH BEARS N07°00'14"E 2115.76' FROM THE WEST 1/4 CORNER OF SAID SECTION 18. THE SIDE LINES OF SAID DESCRIBED RIGHT-OF-WAY BEING SHORTENED OR ELONGATED TO MEET THE GRANTOR'S PROPERTY LINES. BASIS OF BEARINGS IS A G.P.S. OBSERVATION. CONTAINS 0.023 ACRES MORE OR LESS.

BEGINNING OF ROAD STA. 0+00 BEARS  
N06°53'55"E 2148.33' FROM THE WEST 1/4  
CORNER OF SECTION 29, T17S, R32E,  
N.M.P.M.

END OF ROAD STA. 0+32.80 BEARS  
N07°00'14"E 2115.76' FROM THE WEST 1/4  
CORNER OF SECTION 29, T17S, R32, N.M.P.M.



#### ACREAGE / LENGTH TABLE

	OWNERSHIP	FEET	RODS	ACRES
(SEC. 29 NW 1/4)	BLM	32.80	1.99	0.023

▲ = SECTION CORNERS LOCATED.

△ = SECTION CORNERS RE-ESTABLISHED.  
(Not Set on Ground.)

#### NOTES:

- The maximum grade of existing ground for the proposed access road is ±0.2%.

CERTIFICATE OF PROFESSIONAL SURVEY  
THIS IS TO CERTIFY THAT THE ABOVE PLAT WAS PREPARED FROM FIELD  
NOTES OF ACTUAL SURVEYS MADE BY ME OR UNDER MY SUPERVISION  
AND THAT THE SAME ARE TRUE AND CORRECT TO THE BEST OF MY  
KNOWLEDGE AND BELIEF.

REGISTERED LAND SURVEYOR  
REGISTRATION NO. 12446  
STATE OF NEW MEXICO

05-05-15

#### ConocoPhillips Company

MCA UNIT 564, 583 & 580  
SECTION 29, T17S, R32E, N.M.P.M.  
LEA COUNTY, NEW MEXICO

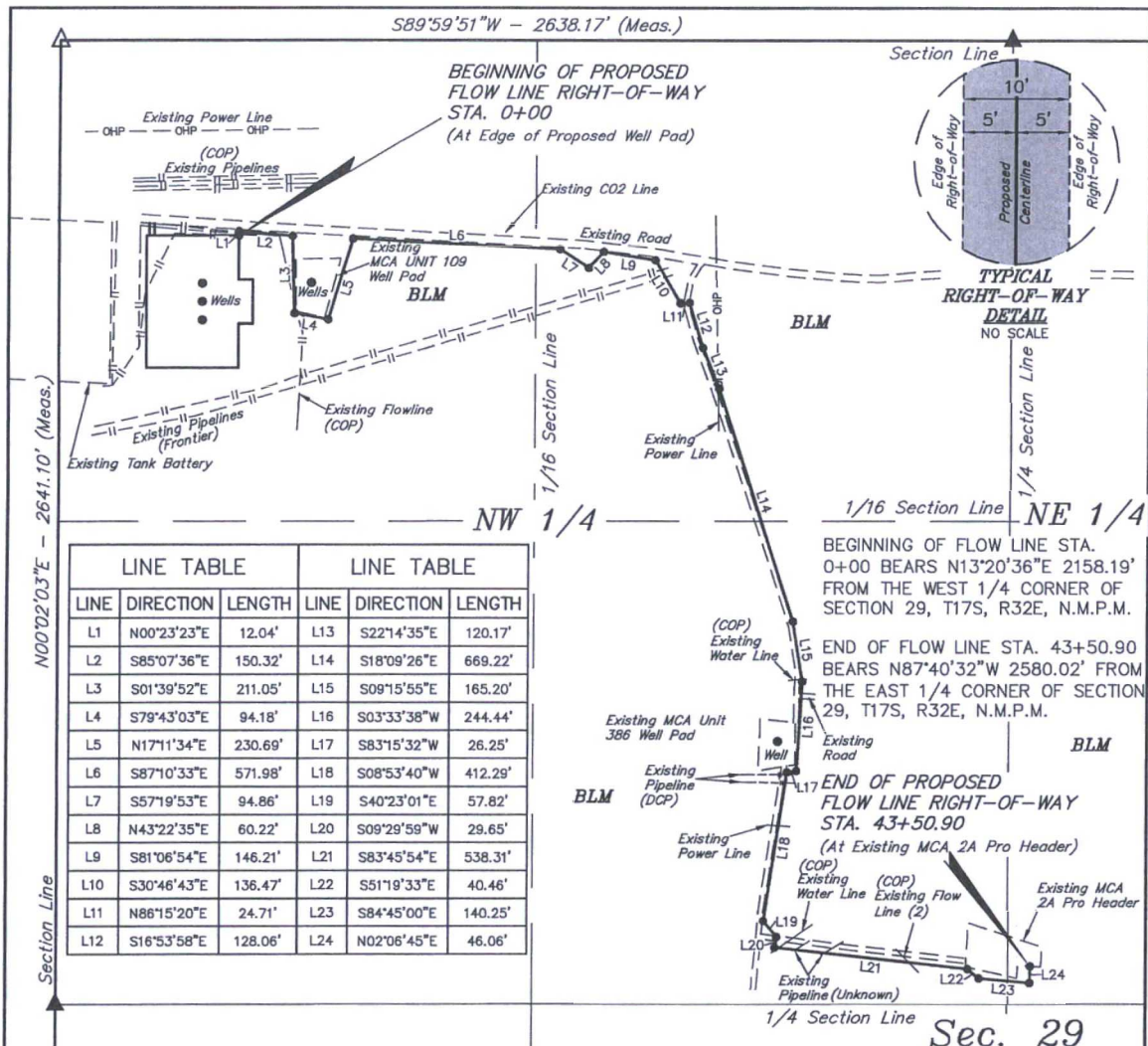
DRAWN BY: B.D.H. DATE DRAWN: 04-28-15  
SCALE: 1" = 400' REVISED: 00-00-00

#### ACCESS ROAD R-O-W



UELS, LLC  
Corporate Office \* 85 South 200 East  
Vernal, UT 84078 \* (435) 789-1017





### FLOW LINE RIGHT-OF-WAY DESCRIPTION

A 10' WIDE RIGHT-OF-WAY 5' ON EACH SIDE OF THE FOLLOWING DESCRIBED CENTERLINE.

BEGINNING AT A POINT IN THE NW 1/4 NW 1/4 OF SECTION 29, T17S, R32E, N.M.P.M., WHICH BEARS N13°20'36"E 2158.19' FROM THE WEST 1/4 CORNER OF SAID SECTION 29, THENCE N00°23'23"E 12.04'; THENCE S85°07'36"E 150.32'; THENCE S01°39'52"E 211.05'; THENCE S79°43'03"E 94.18'; THENCE N17°11'34"E 230.69'; THENCE S87°10'33"E 571.98'; THENCE S57°19'53"E 94.86'; THENCE N43°22'35"E 60.22'; THENCE S81°06'54"E 146.21'; THENCE S30°46'43"E 136.47'; THENCE N86°15'20"E 24.71'; THENCE S16°53'58"E 128.06'; THENCE S22°14'35"E 120.17'; THENCE S18°09'26"E 669.22'; THENCE S09°15'55"E 165.20'; THENCE S03°33'38"W 244.44'; THENCE S83°15'32"W 26.25'; THENCE S08°53'40"W 412.29'; THENCE S40°23'01"E 57.82'; THENCE S09°29'59"W 29.65'; THENCE S83°45'54"E 538.31'; THENCE S51°19'33"E 40.46'; THENCE S84°45'00"E 140.25'; THENCE N02°06'45"E 46.06' TO A POINT IN THE SW 1/4 SE 1/4 OF SAID SECTION 29, WHICH BEARS N87°40'32"W 2580.02' FROM THE EAST 1/4 CORNER OF SAID SECTION 29. THE SIDE LINES OF SAID DESCRIBED RIGHT-OF-WAY BEING SHORTENED OR ELONGATED TO MEET THE GRANTOR'S PROPERTY LINES. BASIS OF BEARINGS IS A G.P.S. OBSERVATION. CONTAINS 0.999 ACRES MORE OR LESS.



ACREAGE / LENGTH TABLE				
	OWNERSHIP	FEET	RODS	ACRES
(SEC. 29 NW 1/4)	BLM	4244.86	257.26	0.975
(SEC. 29 NE 1/4)	BLM	106.04	6.43	0.024
TOTAL		4350.90	263.69	0.999

- ▲ = SECTION CORNERS LOCATED.  
 △ = SECTION CORNERS RE-ESTABLISHED.  
 (Not Set on Ground.)

NOTES:

CERTIFICATE OF PROFESSIONAL SURVEY  
 THIS IS TO CERTIFY THAT THE ABOVE PLAT WAS PREPARED FROM FIELD NOTES OF ACTUAL SURVEYS MADE BY ME OR UNDER MY SUPERVISION AND THAT THE SAME ARE TRUE AND CORRECT TO THE BEST OF MY KNOWLEDGE AND BELIEF.

REGISTERED LAND SURVEYOR  
 REGISTRATION NO. 12446  
 STATE OF NEW MEXICO  
 05-05-15

ConocoPhillips Company

MCA UNIT 583 & 580  
 SECTION 29, T17S, R32E, N.M.P.M.  
 LEA COUNTY, NEW MEXICO

DRAWN BY: B.D.H. DATE DRAWN: 04-28-15  
 SCALE: 1" = 400' REVISED: 00-00-00

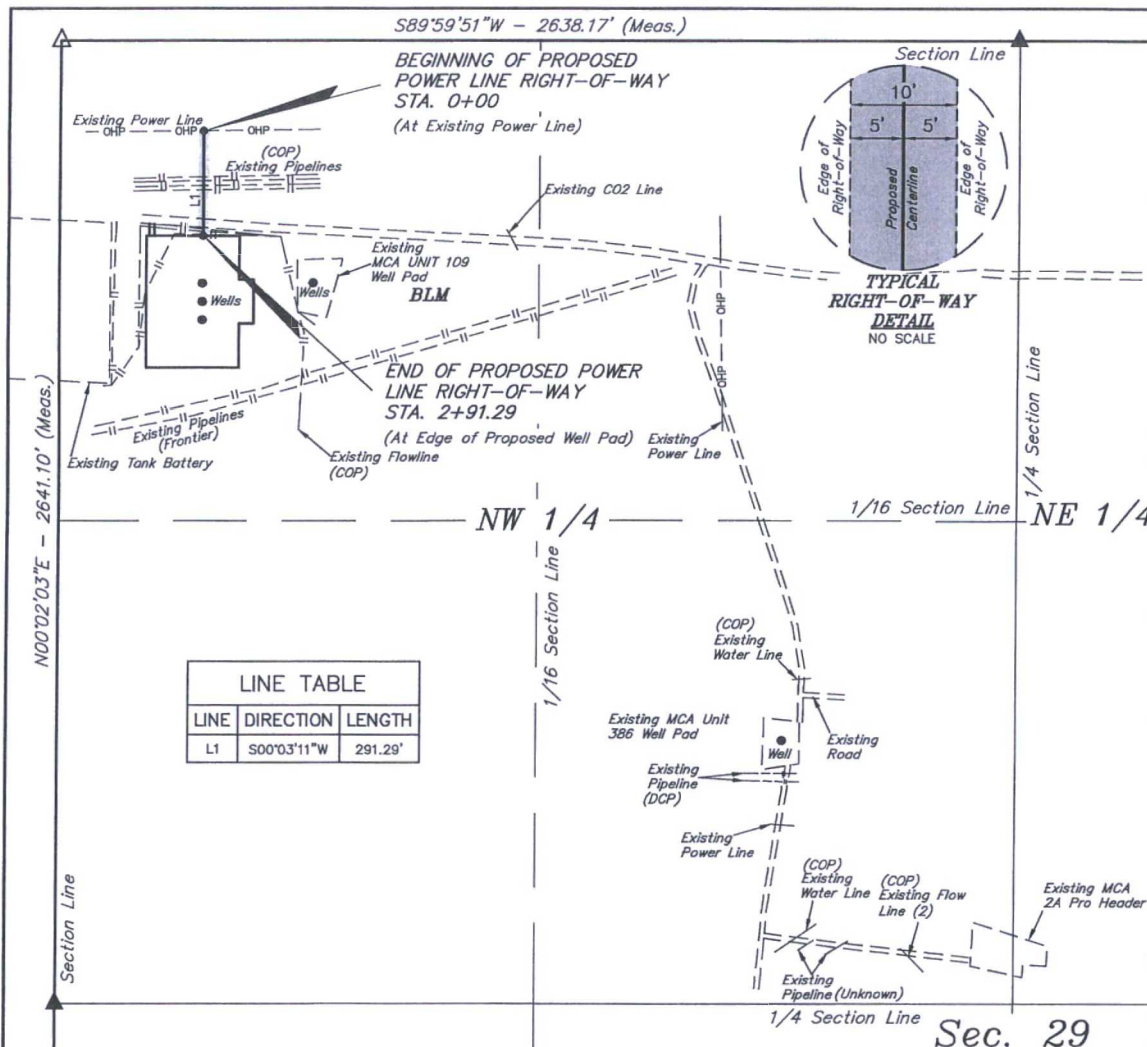
FLOW LINE R-O-W



UELS, LLC  
 Corporate Office \* 85 South 200 East  
 Vernal, UT 84078 \* (435) 789-1017







LINE TABLE		
LINE	DIRECTION	LENGTH
L1	S00°03'11\"W	291.29'

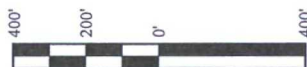
### POWER LINE RIGHT-OF-WAY DESCRIPTION

A 10' WIDE RIGHT-OF-WAY 5' ON EACH SIDE OF THE FOLLOWING DESCRIBED CENTERLINE.

BEGINNING AT A POINT IN THE NW 1/4 NW 1/4 OF SECTION 29, T17S, R32E, N.M.P.M., WHICH BEARS N09°27'25\"E 2424.20' FROM THE WEST 1/4 CORNER OF SAID SECTION 29, THENCE S00°03'11\"W 291.29' TO A POINT IN THE NW 1/4 NW 1/4 OF SAID SECTION 29, WHICH BEARS N10°43'58\"E 2137.36' FROM THE WEST 1/4 CORNER OF SAID SECTION 18. THE SIDE LINES OF SAID DESCRIBED RIGHT-OF-WAY BEING SHORTENED OR ELONGATED TO MEET THE GRANTOR'S PROPERTY LINES. BASIS OF BEARINGS IS A G.P.S. OBSERVATION. CONTAINS 0.067 ACRES MORE OR LESS.

BEGINNING OF POWER LINE STA. 0+00 BEARS  
N09°27'25\"E 2424.20' FROM THE WEST 1/4  
CORNER OF SECTION 29, T17S, R32E,  
N.M.P.M.

END OF POWER LINE STA. 2+91.29 BEARS  
N10°43'58\"E 2137.36' FROM THE WEST 1/4  
CORNER OF SECTION 29, T17S, R32E,  
N.M.P.M.



ACREAGE / LENGTH TABLE				
	OWNERSHIP	FEET	RODS	ACRES
(SEC. 29 NW 1/4)	BLM	291.29	17.65	0.067

- ▲ = SECTION CORNERS LOCATED.  
△ = SECTION CORNERS RE-ESTABLISHED.  
(Not Set on Ground.)

#### NOTES:

CERTIFICATE  
THIS IS TO CERTIFY THAT THE ABOVE PLAT WAS PREPARED FROM FIELD  
NOTES OF ACTUAL SURVEYS MADE BY ME OR UNDER MY SUPERVISION  
AND THAT THE SAME ARE TRUE AND CORRECT TO THE BEST OF MY  
KNOWLEDGE AND BELIEF.

REGISTERED LAND SURVEYOR  
REGISTRATION NO. 12446  
STATE OF NEW MEXICO  
05-05-15

### ConocoPhillips Company

MCA UNIT 564, 583 & 580  
SECTION 29, T17S, R32E, N.M.P.M.  
LEA COUNTY, NEW MEXICO

DRAWN BY: B.D.H. DATE DRAWN: 04-28-15  
SCALE: 1" = 400' REVISED: 00-00-00

### POWER LINE R-O-W



UELS, LLC  
Corporate Office \* 85 South 200 East  
Vernal, UT 84078 \* (435) 789-1017

BEGINNING AT THE INTERSECTION OF U.S. HIGHWAY 82 AND MALJAMAR ROAD/COUNTY ROAD 126, PROCEED IN A SOUTHERLY DIRECTION FROM MALJAMAR, NEW MEXICO ALONG MALJAMAR ROAD/COUNTY ROAD 126 APPROXIMATELY 3.3 MILES TO THE JUNCTION OF THIS ROAD AND AN EXISTING ROAD TO THE WEST; TURN RIGHT AND PROCEED IN A WESTERLY, THEN NORTHERLY, THEN WESTERLY DIRECTION APPROXIMATELY 2.1 MILES TO THE JUNCTION OF THIS ROAD AND THE BEGINNING OF THE PROPOSED ACCESS ROAD TO THE SOUTH; FOLLOW ROAD FLAGS IN A SOUTHERLY DIRECTION APPROXIMATELY 33' TO THE PROPOSED LOCATION.

TOTAL DISTANCE FROM MALJAMAR, NEW MEXICO TO THE PROPOSED LOCATION IS APPROXIMATELY 5.4 MILES.

**ConocoPhillips Company**

MCA UNIT 564, 583 & 580  
NW 1/4 NW 1/4, SECTION 29, T17S, R32E, N.M.P.M.  
LEA COUNTY, NEW MEXICO

DRAWN BY: B.D.

DATE DRAWN: 04-23-15

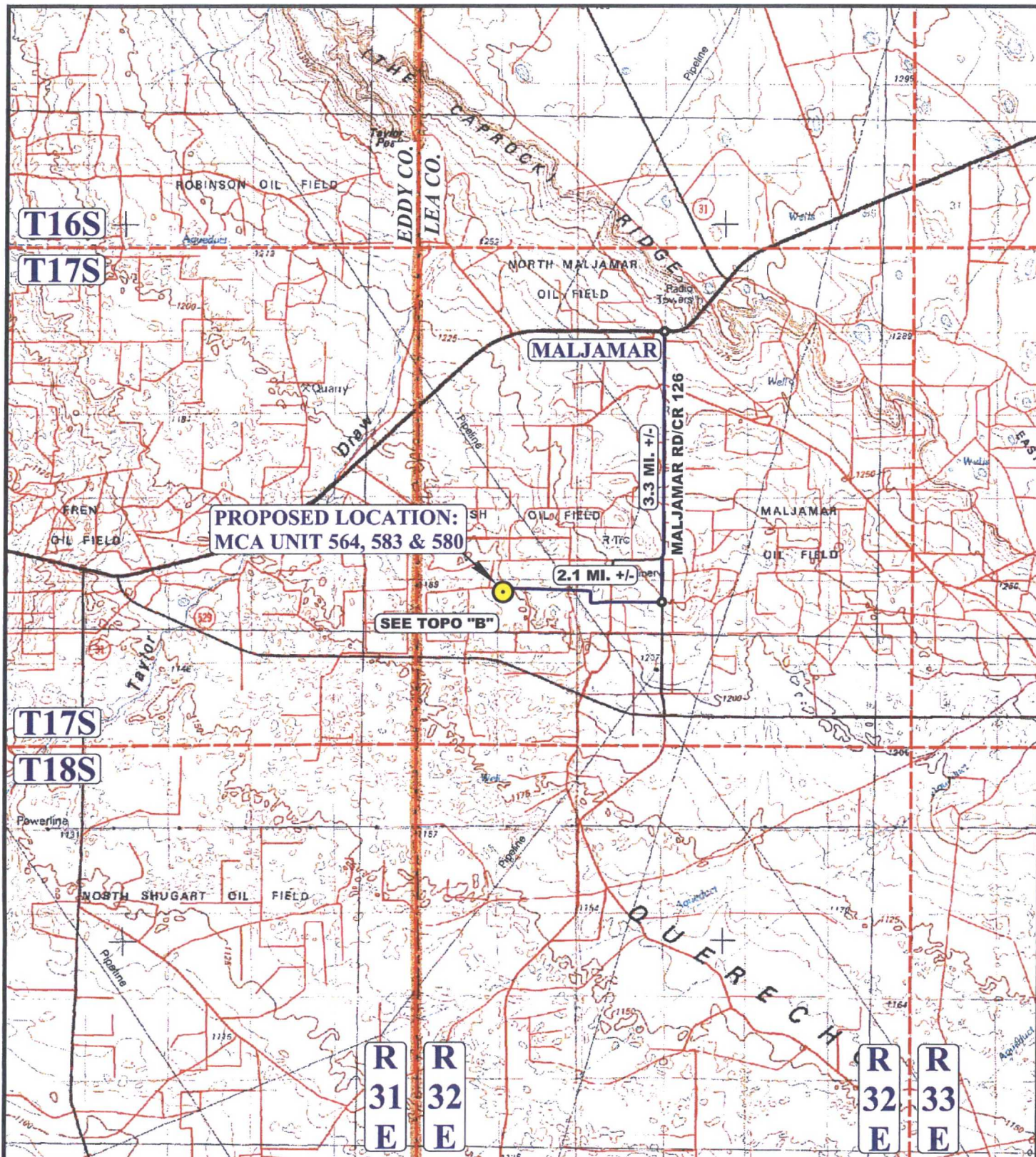
REVISED: 00-00-00

**ROAD DESCRIPTION**



**UELS, LLC**  
Corporate Office \* 85 South 200 East  
Vernal, UT 84078 \* (435) 789-1017





# LEGEND:

 PROPOSED LOCATION

ConocoPhillips Company

MCA UNIT 564, 583 & 580  
NW 1/4 NW 1/4, SECTION 29, T17S, R32E, N.M.P.M.  
LEA COUNTY, NEW MEXICO

DRAWN BY: B.D.

DATE DRAWN: 04-23-15

SCALE: 1:100,000

REVISED: 00-00-00

ACCESS ROAD MAP

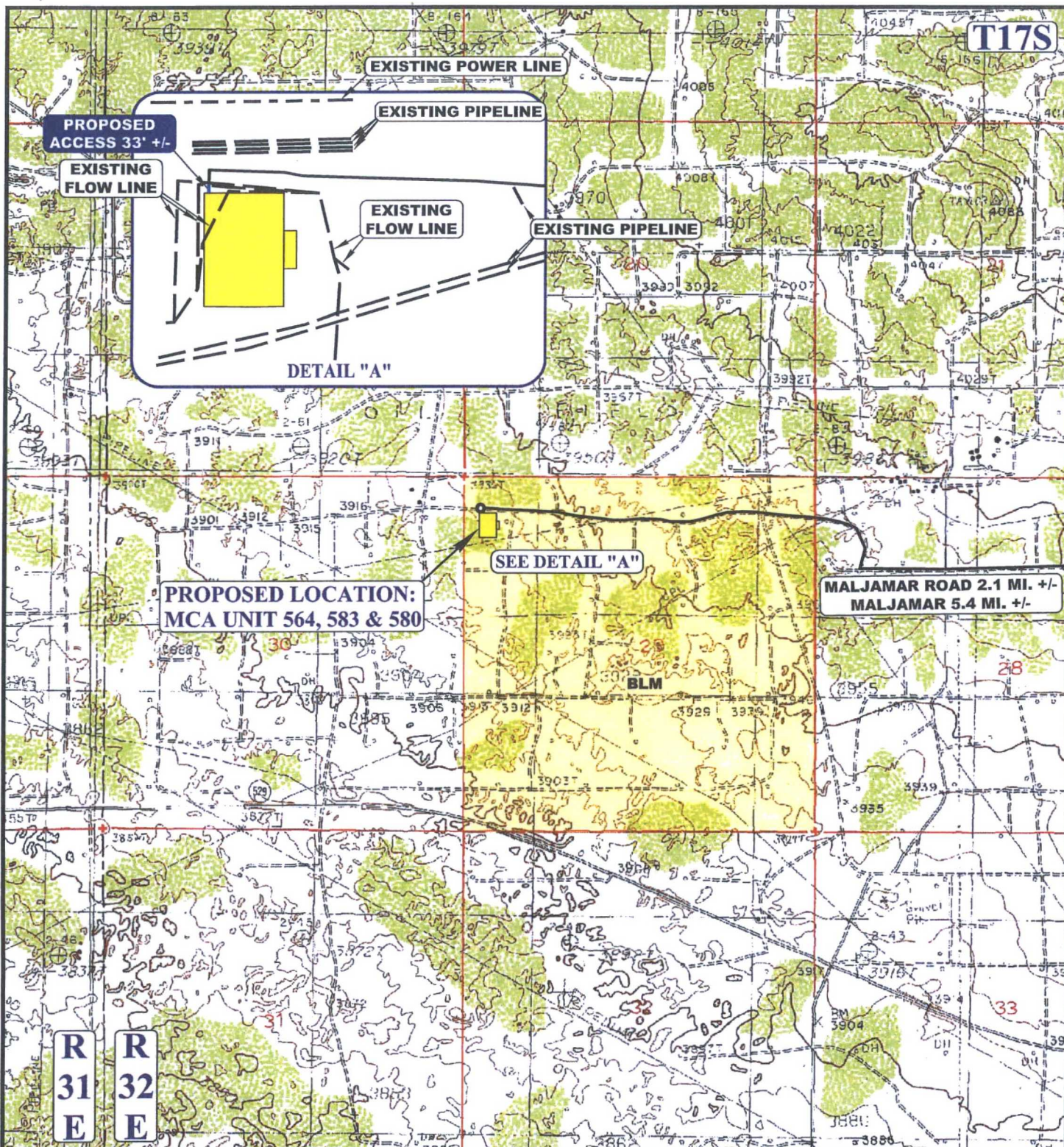
TOPO A



UELS, LLC  
Corporate Office \* 85 South 200 East  
Vernal, UT 84078 \* (435) 789-1017







NOTE: PARCEL DATA SHOWN HAS BEEN OBTAINED FROM VARIOUS SOURCES AND SHOULD BE USED FOR MAPPING, GRAPHIC AND PLANNING PURPOSES ONLY. NO WARRANTY IS MADE BY UINTAH ENGINEERING AND LAND SURVEYING (UELS) FOR ACCURACY OF THE PARCEL DATA.

#### LEGEND:

- EXISTING ROAD
- PROPOSED ROAD
- EXISTING POWER LINE
- EXISTING WATER LINE
- EXISTING PIPELINE
- EXISTING FLOW LINE

#### ConocoPhillips Company

MCA UNIT 564, 583 & 580  
NW 1/4 NW 1/4, SECTION 29, T17S, R32E, N.M.P.M.  
LEA COUNTY, NEW MEXICO

DRAWN BY: B.D.

DATE DRAWN: 04-23-15

SCALE: 1" = 2000'

REVISED: 00-00-00

ACCESS ROAD MAP

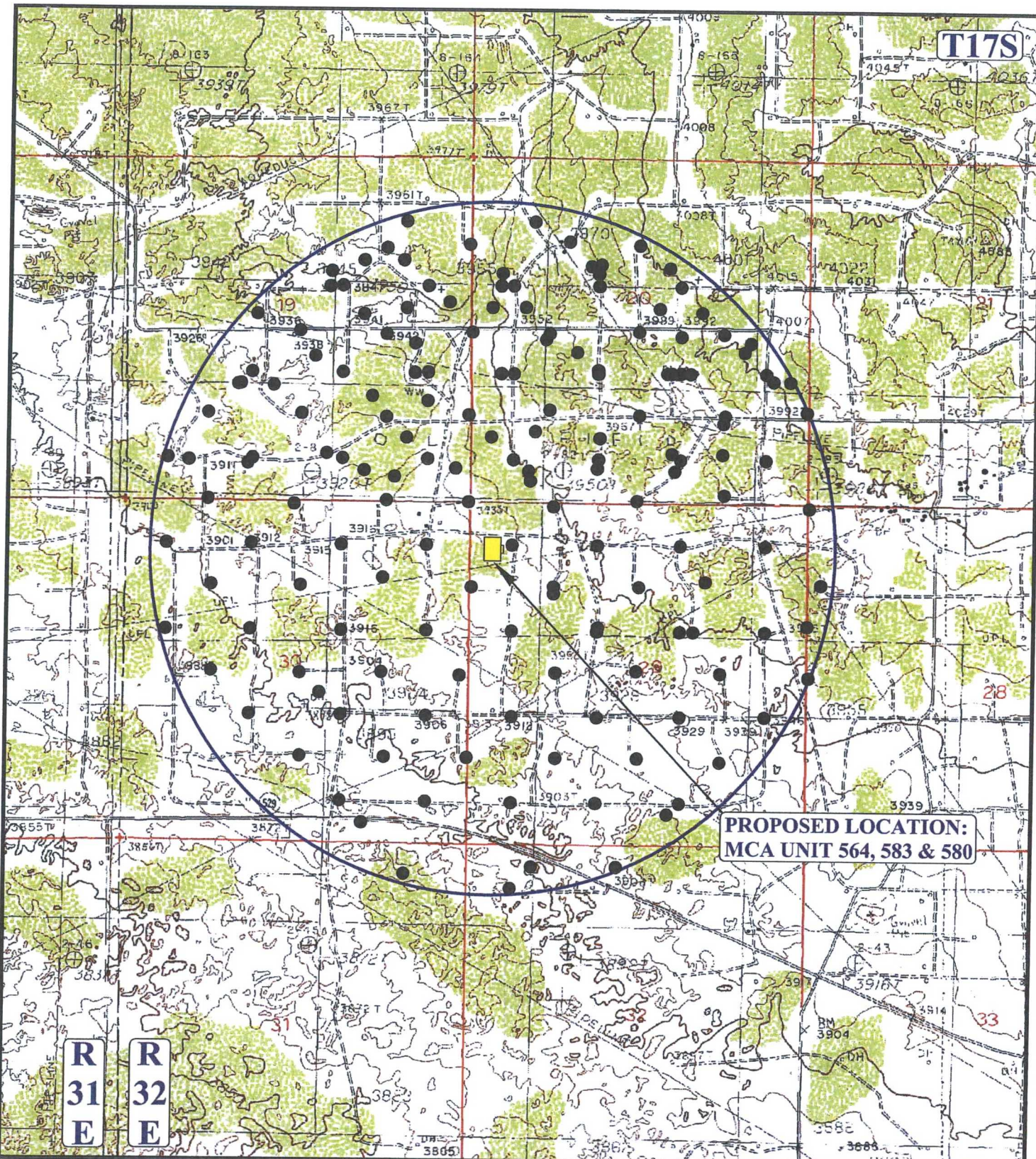
TOPO B



UELS, LLC  
Corporate Office \* 85 South 200 East  
Vernal, UT 84078 \* (435) 789-1017







**LEGEND:**

- PRODUCING WELLS



**UELS, LLC**  
Corporate Office \* 85 South 200 East  
Vernal, UT 84078 \* (435) 789-1017



**ConocoPhillips Company**

MCA UNIT 564, 583 & 580  
NW 1/4 NW 1/4, SECTION 29, T17S, R32E, N.M.P.M.  
LEA COUNTY, NEW MEXICO

DRAWN BY: B.D.

DATE DRAWN: 04-23-15

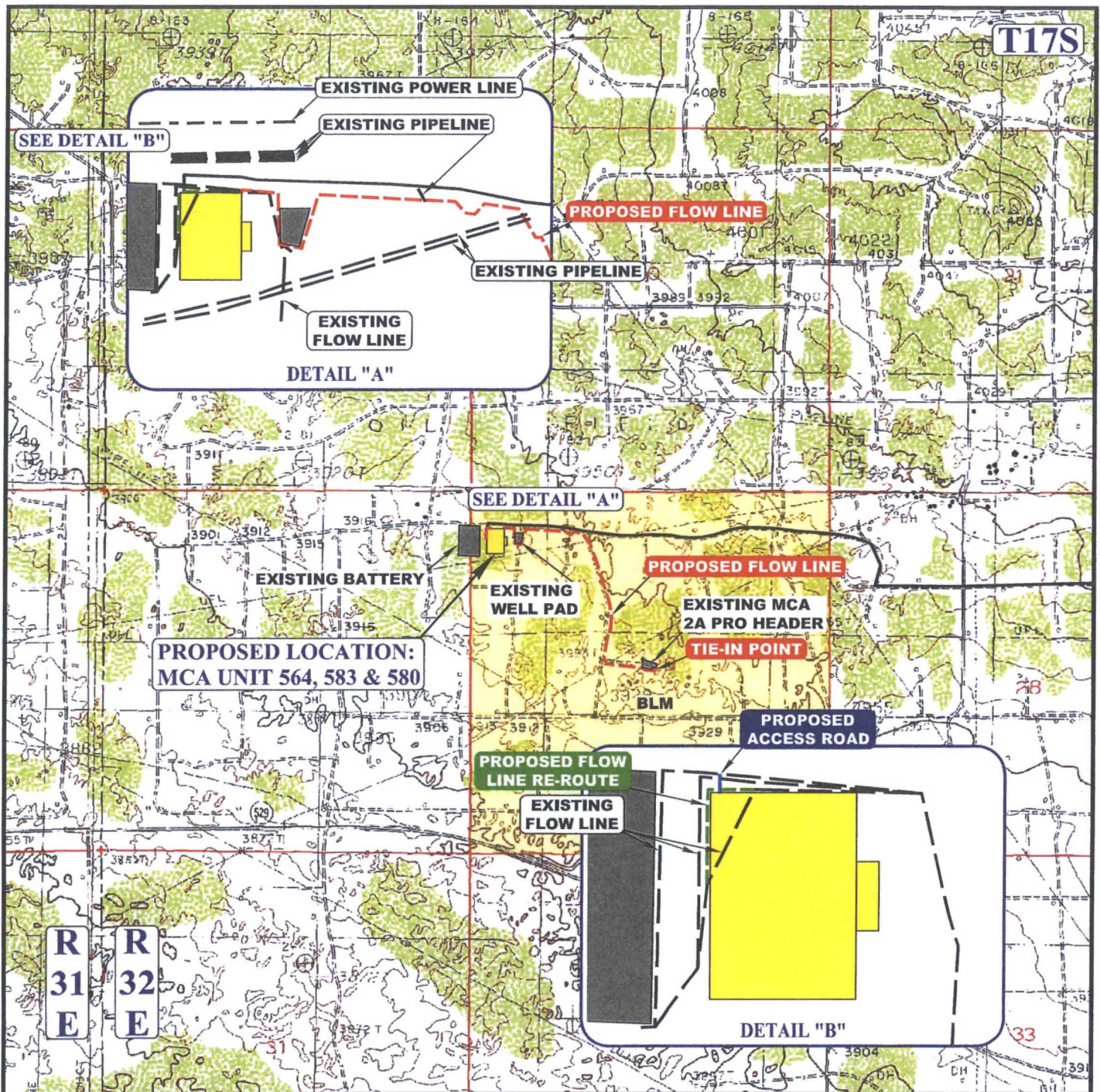
SCALE: 1" = 2000'

REVISED: 00-00-00

**WELL PROXIMITY MAP**

**TOPO C**





APPROXIMATE TOTAL FLOW LINE RE-ROUTE DISTANCE = 246' +/-

APPROXIMATE TOTAL FLOW LINE DISTANCE = 4351' +/-

NOTE: PARCEL DATA SHOWN HAS BEEN OBTAINED FROM VARIOUS SOURCES AND SHOULD BE USED FOR MAPPING, GRAPHIC AND PLANNING PURPOSES ONLY. NO WARRANTY IS MADE BY UINTEH ENGINEERING AND LAND SURVEYING (UELS) FOR ACCURACY OF THE PARCEL DATA.

#### LEGEND:

--- EXISTING ROAD  
 --- PROPOSED FLOW LINE  
 --- PROPOSED ROAD  
 --- EXISTING POWER LINE  
 --- EXISTING PIPELINE  
 --- EXISTING WATER LINE  
 --- PROPOSED FLOW LINE RE-ROUTE

ConocoPhillips Company

MCA UNIT 583 & 580  
 NW 1/4 NW 1/4, SECTION 29, T17S, R32E, N.M.P.M.  
 LEA COUNTY, NEW MEXICO

DRAWN BY: B.D.

DATE DRAWN: 04-23-15

SCALE: 1" = 2000'

REVISED: 00-00-00

FLOW LINE MAP

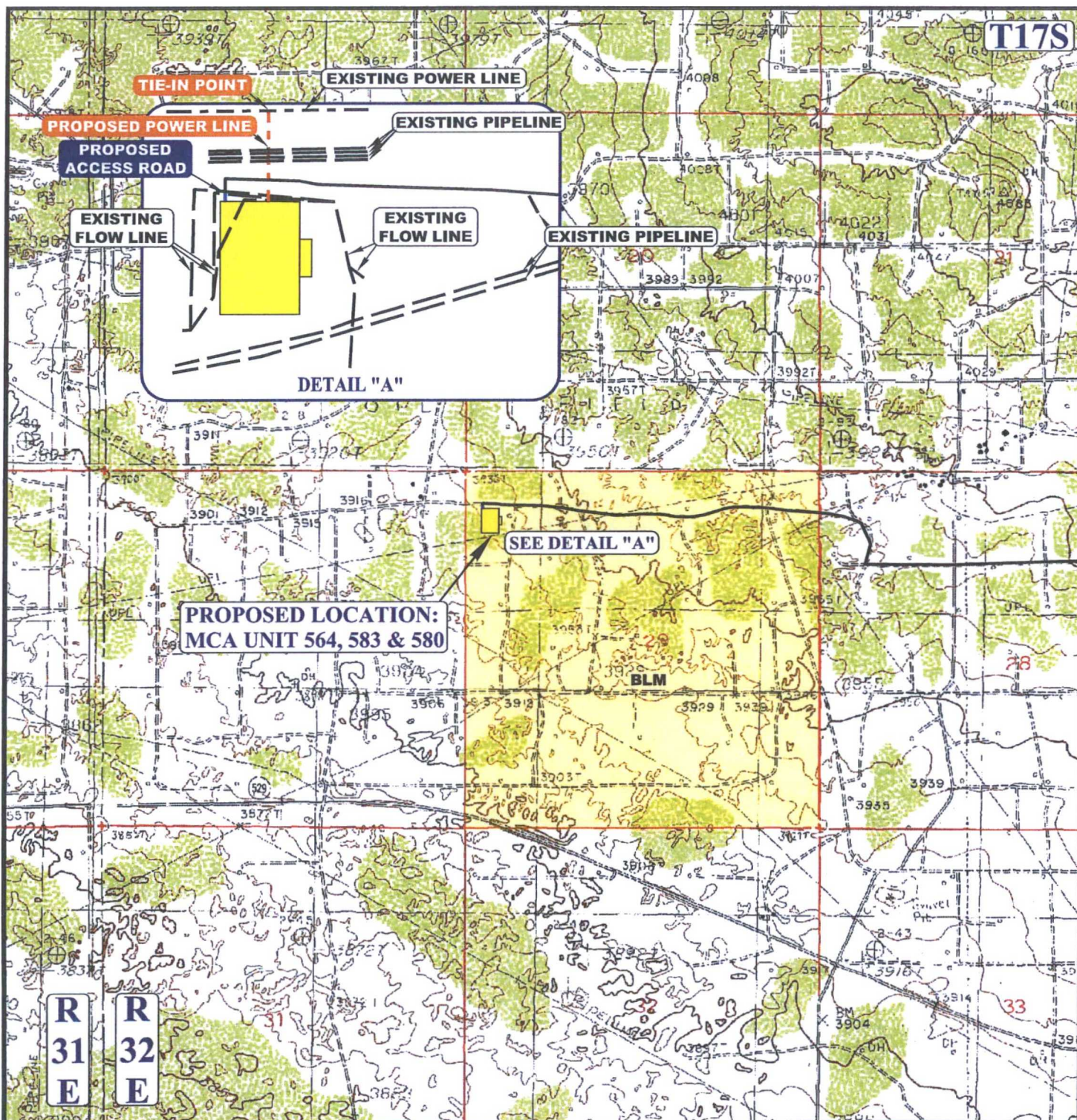
TOPO D



UEELS, LLC  
 Corporate Office \* 85 South 200 East  
 Vernal, UT 84078 \* (435) 789-1017







**APPROXIMATE TOTAL POWER LINE DISTANCE = 291' +/-**

NOTE: PARCEL DATA SHOWN HAS BEEN OBTAINED FROM VARIOUS SOURCES AND SHOULD BE USED FOR MAPPING, GRAPHIC AND PLANNING PURPOSES ONLY. NO WARRANTY IS MADE BY UTAH ENGINEERING AND LAND SURVEYING (UELS) FOR ACCURACY OF THE PARCEL DATA.

**LEGEND:**

- EXISTING ROAD
- - - PROPOSED ROAD
- - - PROPOSED POWER LINE
- - - EXISTING POWER LINE
- - - EXISTING PIPELINE
- - - EXISTING WATER LINE



**UELS, LLC**  
Corporate Office \* 85 South 200 East  
Vernal, UT 84078 \* (435) 789-1017



**ConocoPhillips Company**

MCA UNIT 564, 583 & 580  
NW 1/4 NW 1/4, SECTION 29, T17S, R32E, N.M.P.M.  
LEA COUNTY, NEW MEXICO

DRAWN BY: B.D.

DATE DRAWN: 04-23-15

SCALE: 1" = 2000'

REVISED: 00-00-00

**POWER LINE MAP**

**TOPO E**



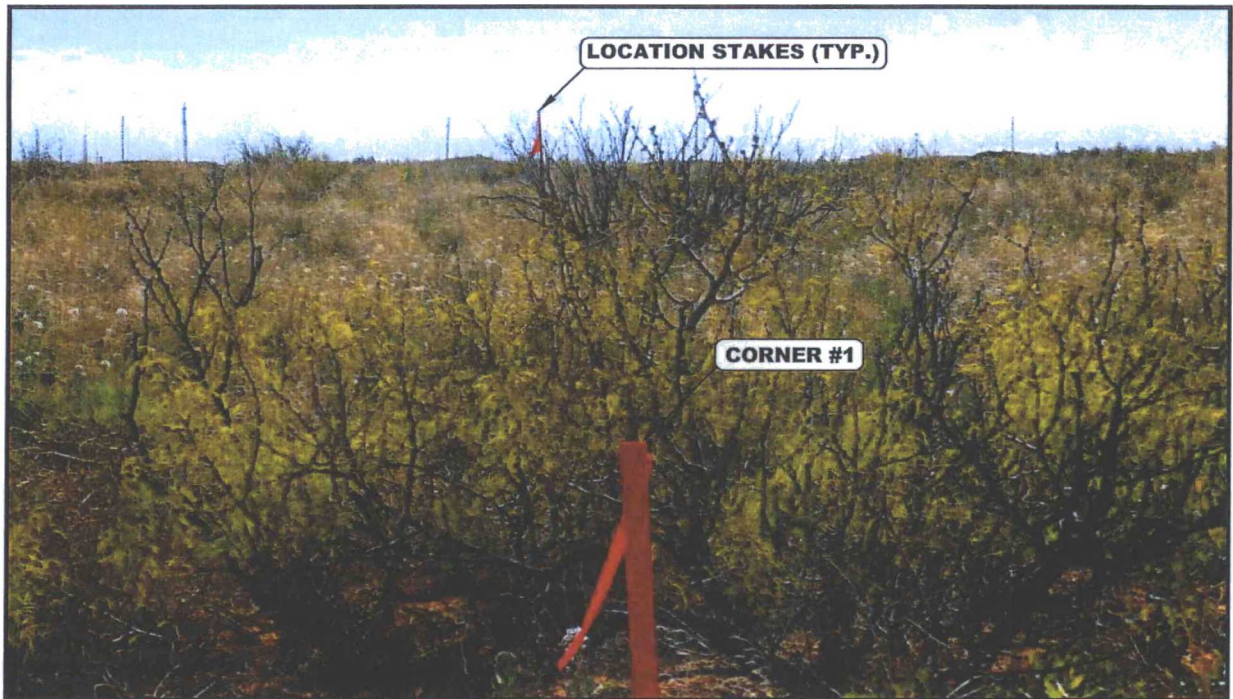


PHOTO: VIEW FROM CORNER #1 TO LOCATION STAKE

CAMERA ANGLE: EASTERLY



PHOTO: VIEW FROM BEGINNING OF PROPOSED ACCESS

CAMERA ANGLE: SOUTHERLY

### ConocoPhillips Company

MCA UNIT 564, 583 & 580  
NW 1/4 NW 1/4, SECTION 29, T17S, R32E, N.M.P.M.  
LEA COUNTY, NEW MEXICO



**UELS, LLC**  
Corporate Office \* 85 South 200 East  
Vernal, UT 84078 \* (435) 789-1017

DRAWN BY: B.D.	DATE DRAWN: 04-23-15
TAKEN BY: J.V.	REVISED: 00-00-00
<b>LOCATION PHOTOS</b>	<b>PHOTO</b>